



United States Department of Agriculture
National Agricultural Statistics Service

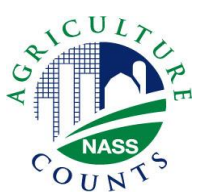


SMALL GRAINS SUMMARY GRAIN STOCKS

Executive Summary

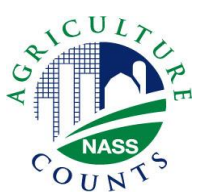
September 28, 2012

8:30 AM



Contents

Field Crops	Grain Stocks	Oilseed Stocks
Wheat	Corn	Sunflower
Barley	Soybeans	Safflower
Oats	Wheat	Mustard Seed
Rye	Barley	
	Oats	
	Sorghum	



Survey Overview

	September Ag Survey
Survey Type	Farmer Reported
Collection Method	Mail, Phone, Internet, Personal Interview
Crops Included	Barley, Oats, Wheat, Rye Stocks – All Crops
States	All except AK and HI
Sample Size	66,560 farms
Collection Period	August 28 – September 19



Small Grains Annual Summary

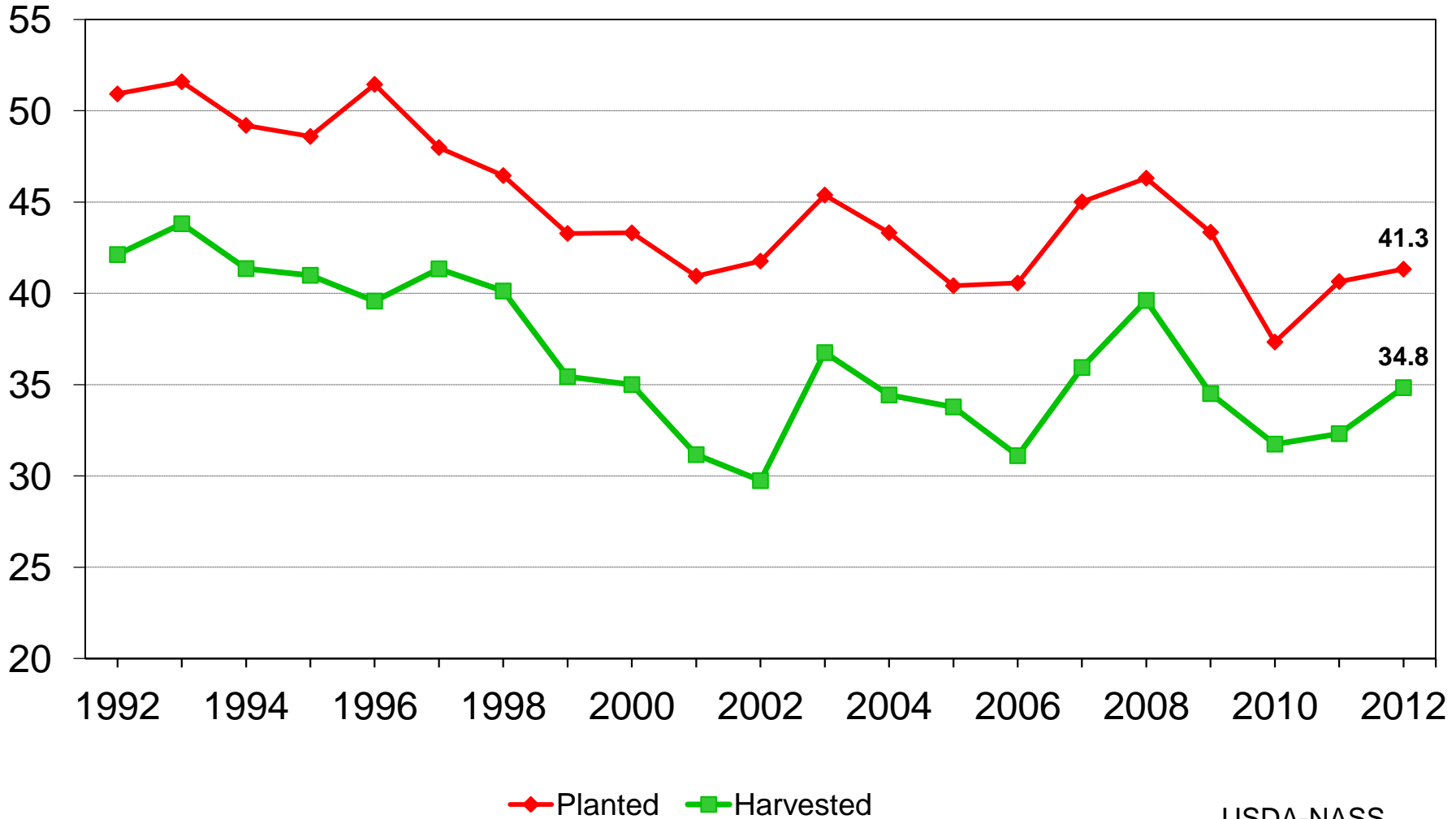
Crop	Unit	September 2012	% Change from Previous Forecast	% Change from Previous Season
Winter Wheat				
Harvested	Mil Ac	34.8	- 0.5	+ 7.8
Yield	Bu/Ac	47.2	- 1.7	+ 2.2
Production	Bil Bu	1.65	- 2.2	+ 10.1
Other Spring				
Harvested	Mil Ac	12.1	+ 3.2	- 0.2
Yield	Bu/Ac	45.0	+ 5.1	+ 19.4
Production	Mil Bu	542	+ 8.5	+ 19.1
Durum				
Harvested	Mil Ac	2.10	- 0.9	+ 60.2
Yield	Bu/Ac	39.0	- 3.7	+ 1.3
Production	Mil Bu	82.0	- 4.7	+ 62.3
All Wheat				
Production	Bil Bu	2.27	+ <0.1	+ 13.5



U.S. Winter Wheat Acres



Million acres

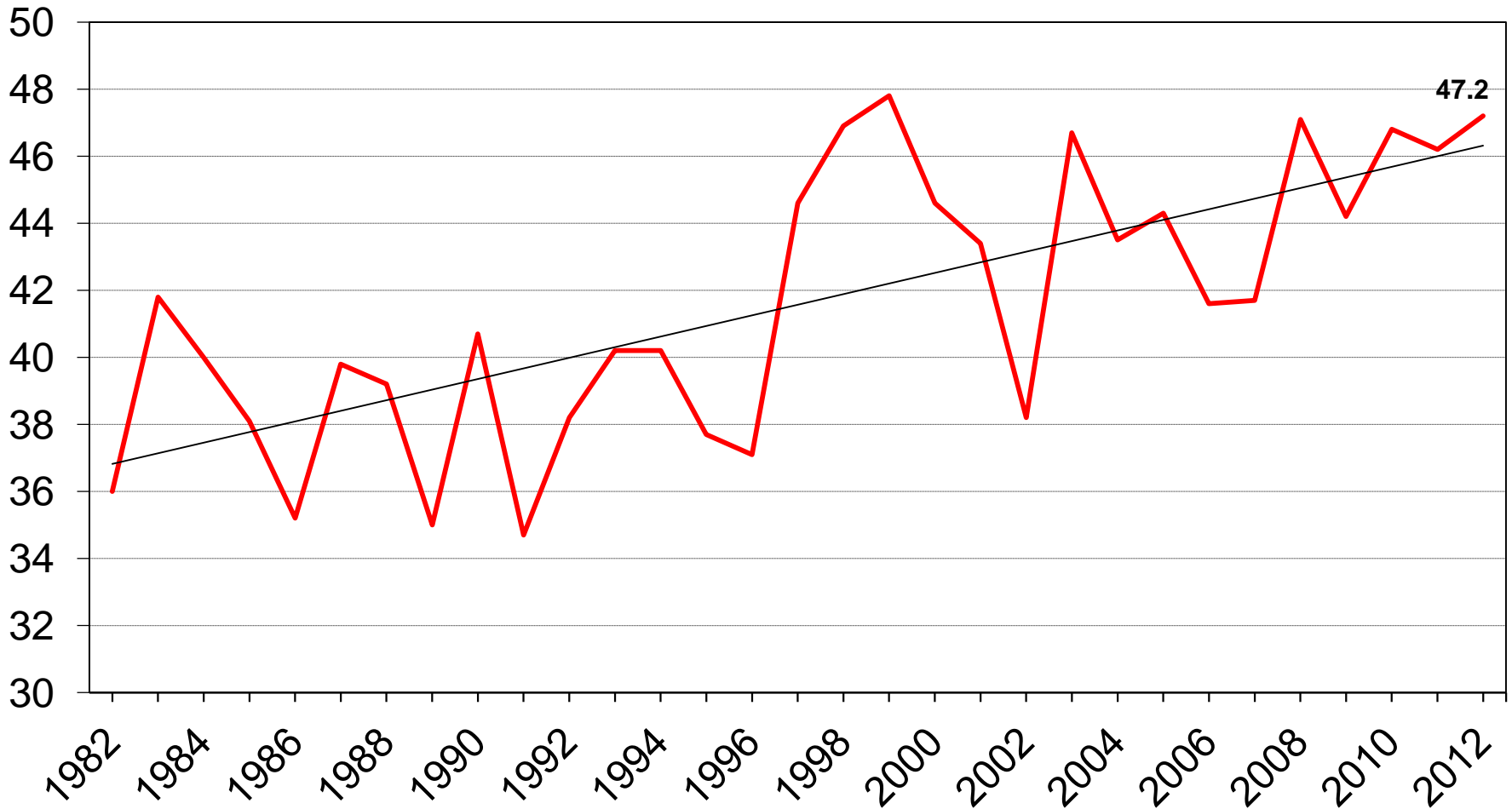




U.S. Winter Wheat Yield



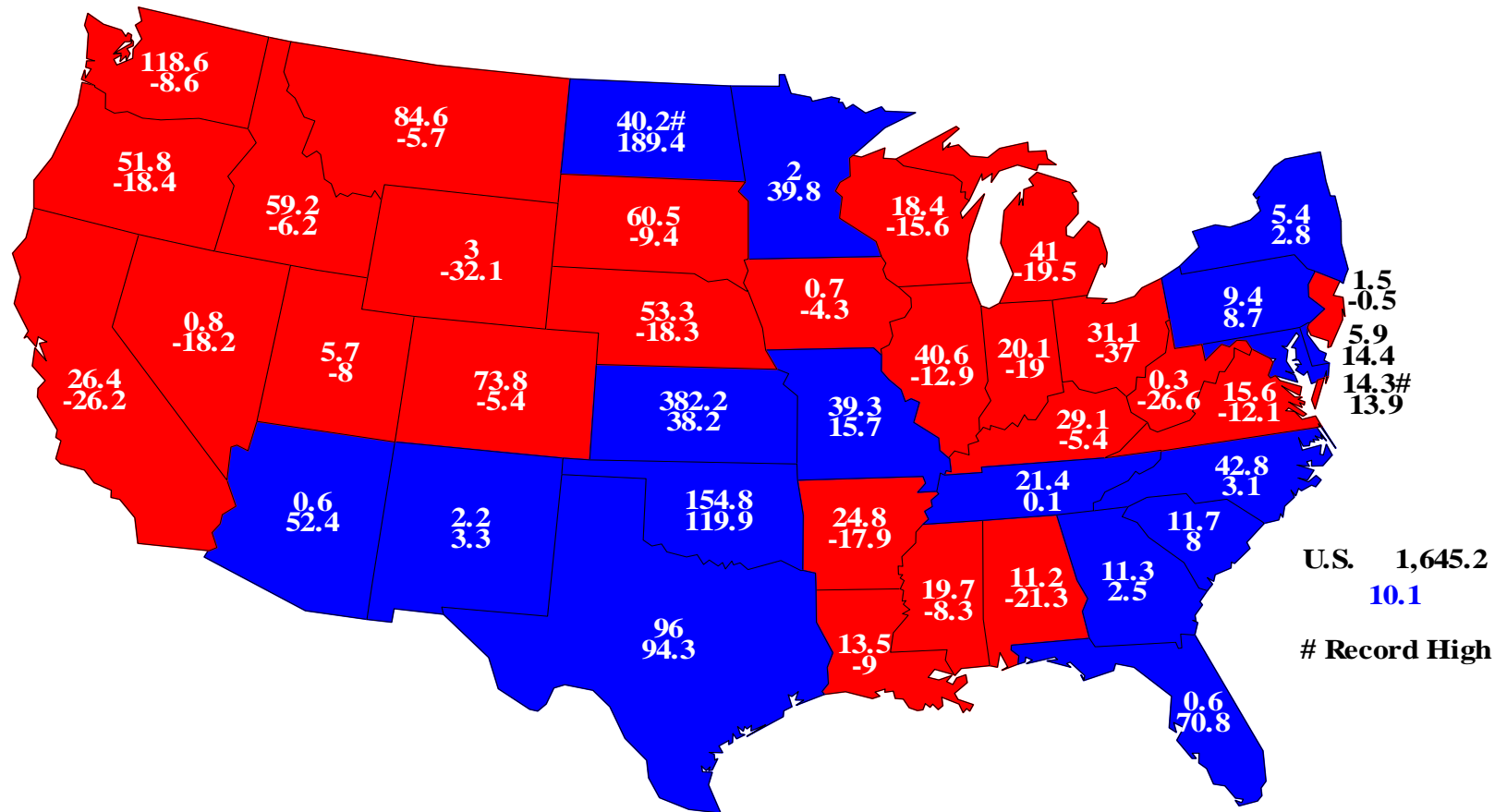
Bushels/acre





Winter Wheat Production, 2012

Million Bu. and Percent Change From Previous Year

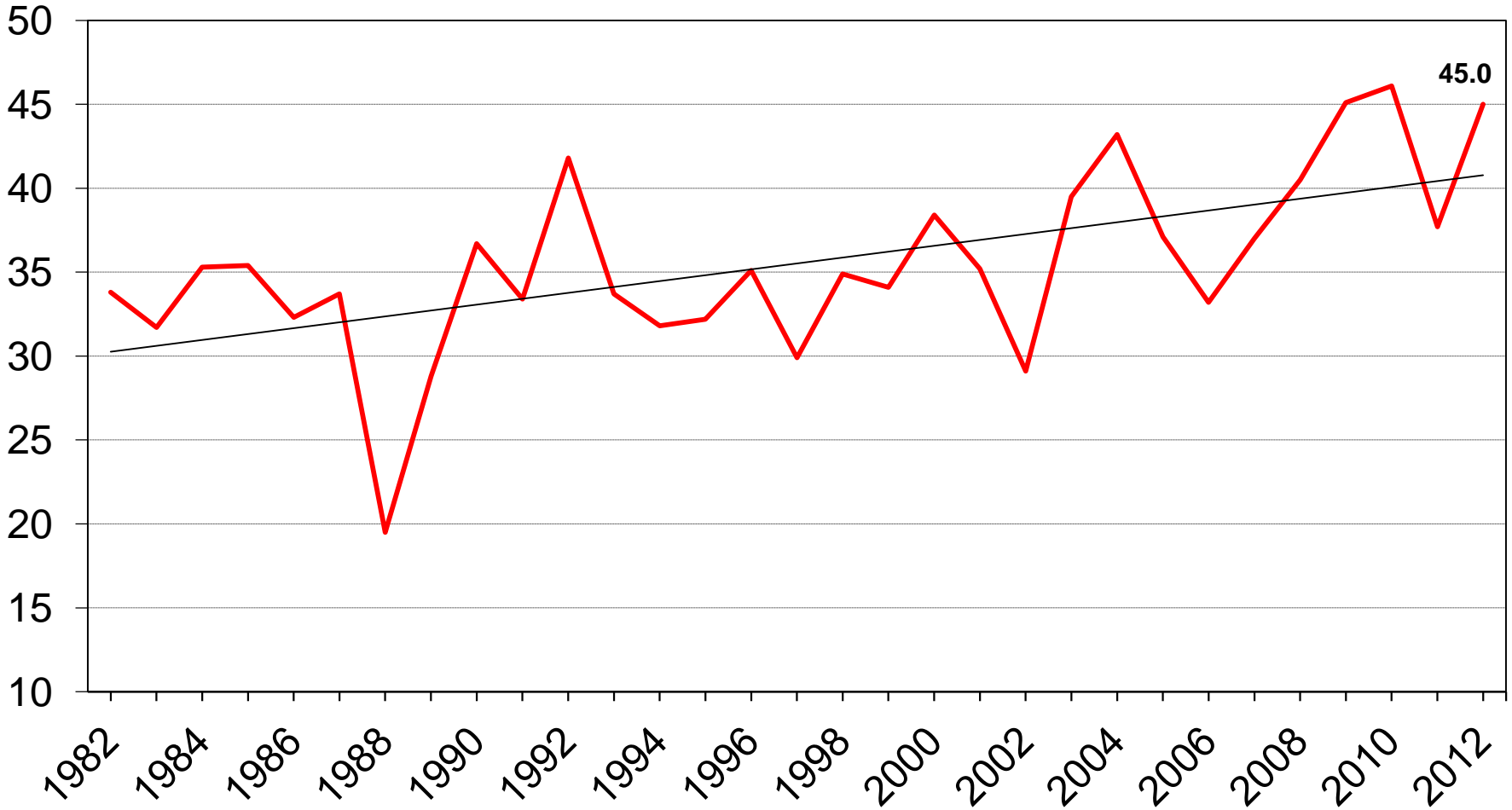


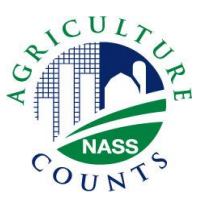


U.S. Other Spring Wheat Yield



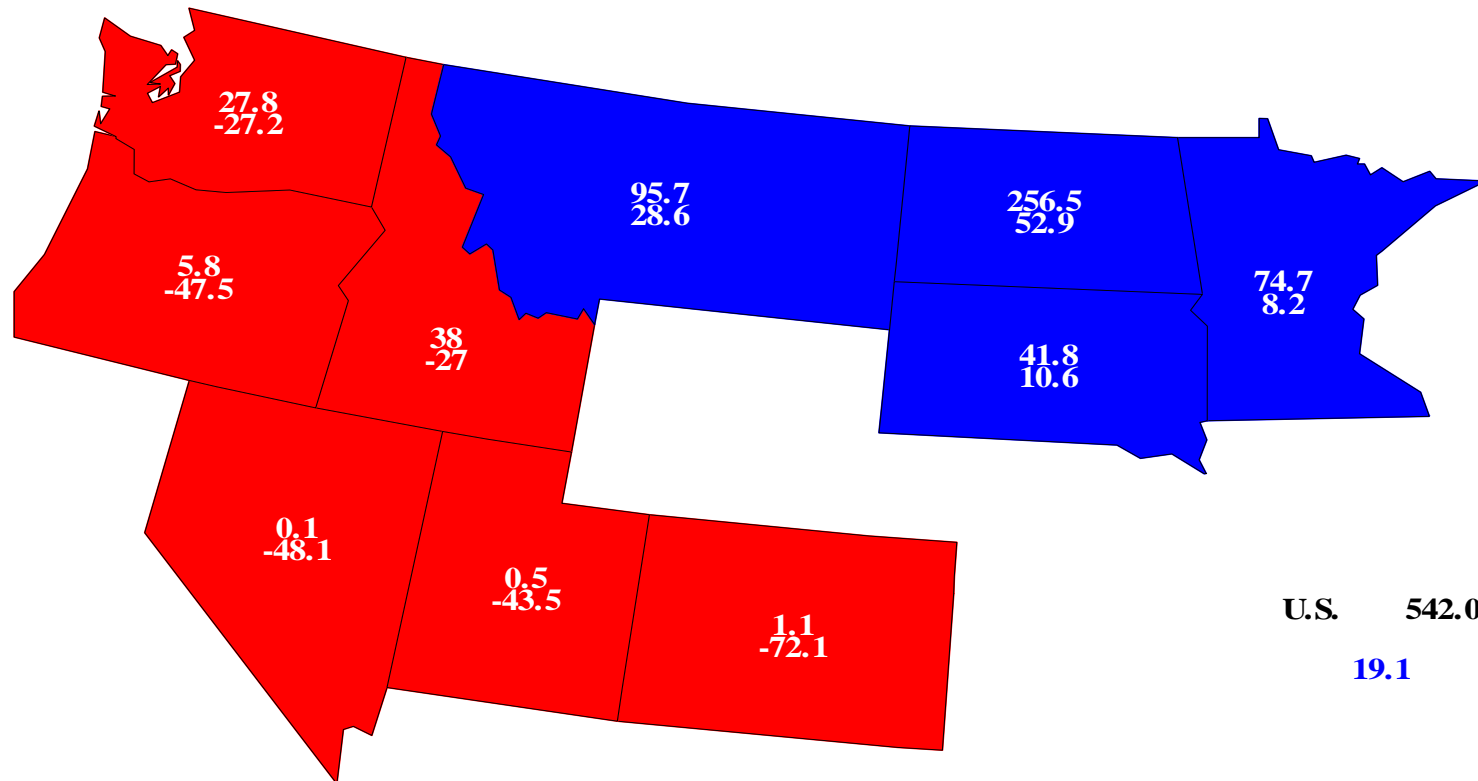
Bushels/acre



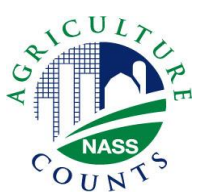


Other Spring Wheat Production, 2012

Million Bu. and Percent Change From Previous Year



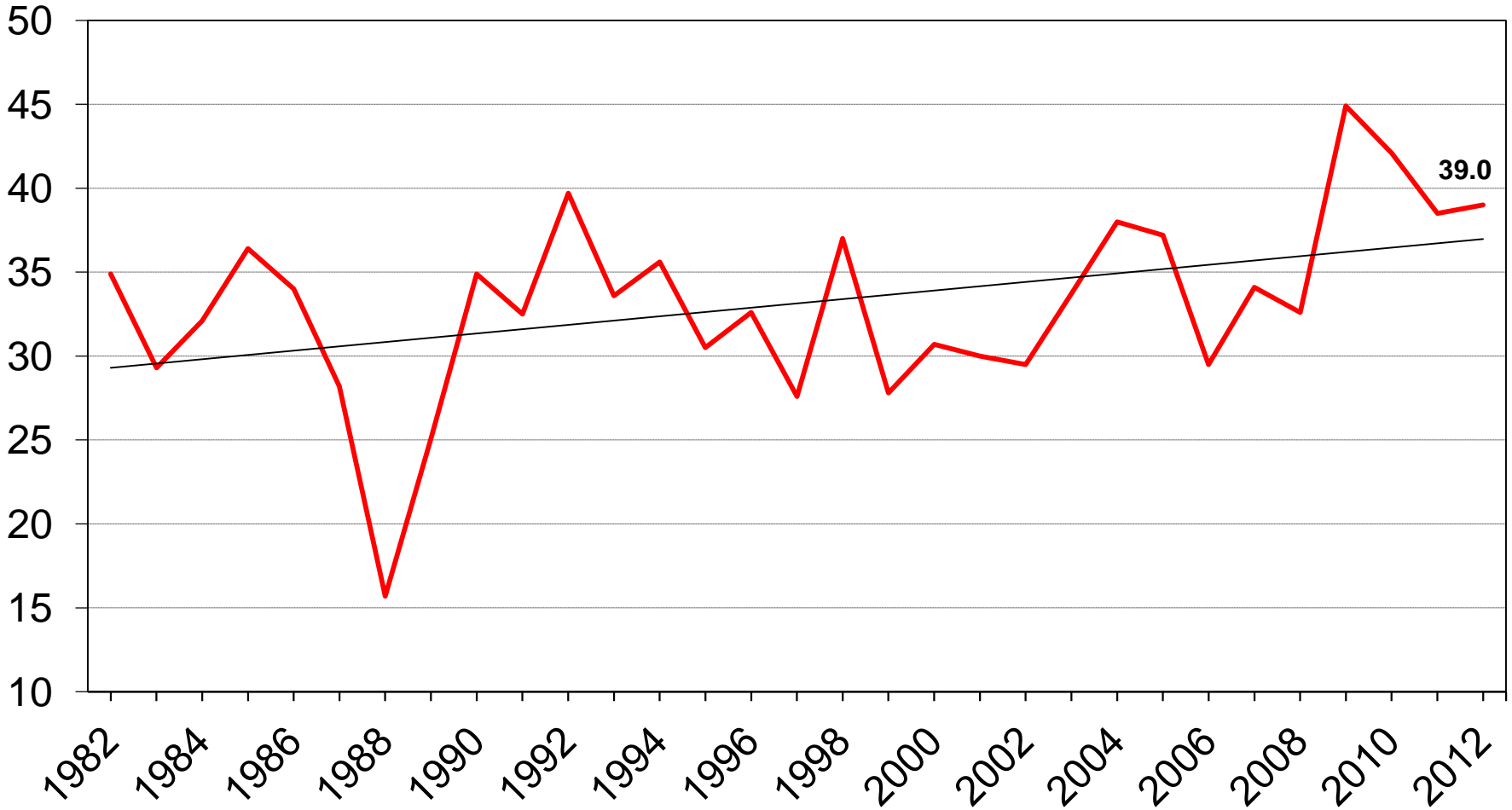
U.S. 542.0
19.1

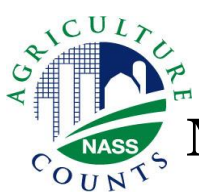


U.S. Durum Wheat Yield



Bushels/acre

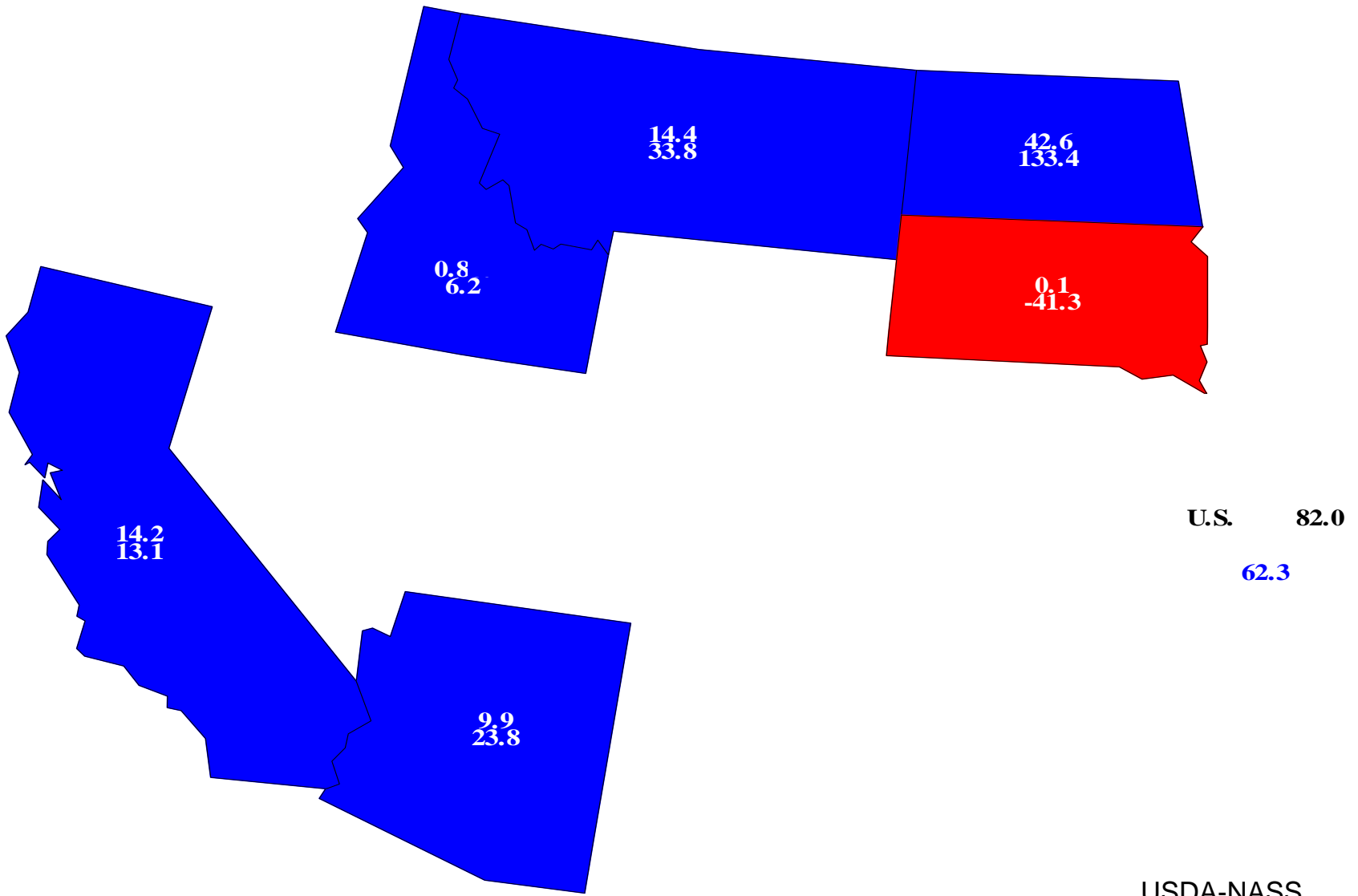




Durum Wheat Production, 2012



Million Bu. and Percent Change From Previous Year





Small Grains Annual Summary



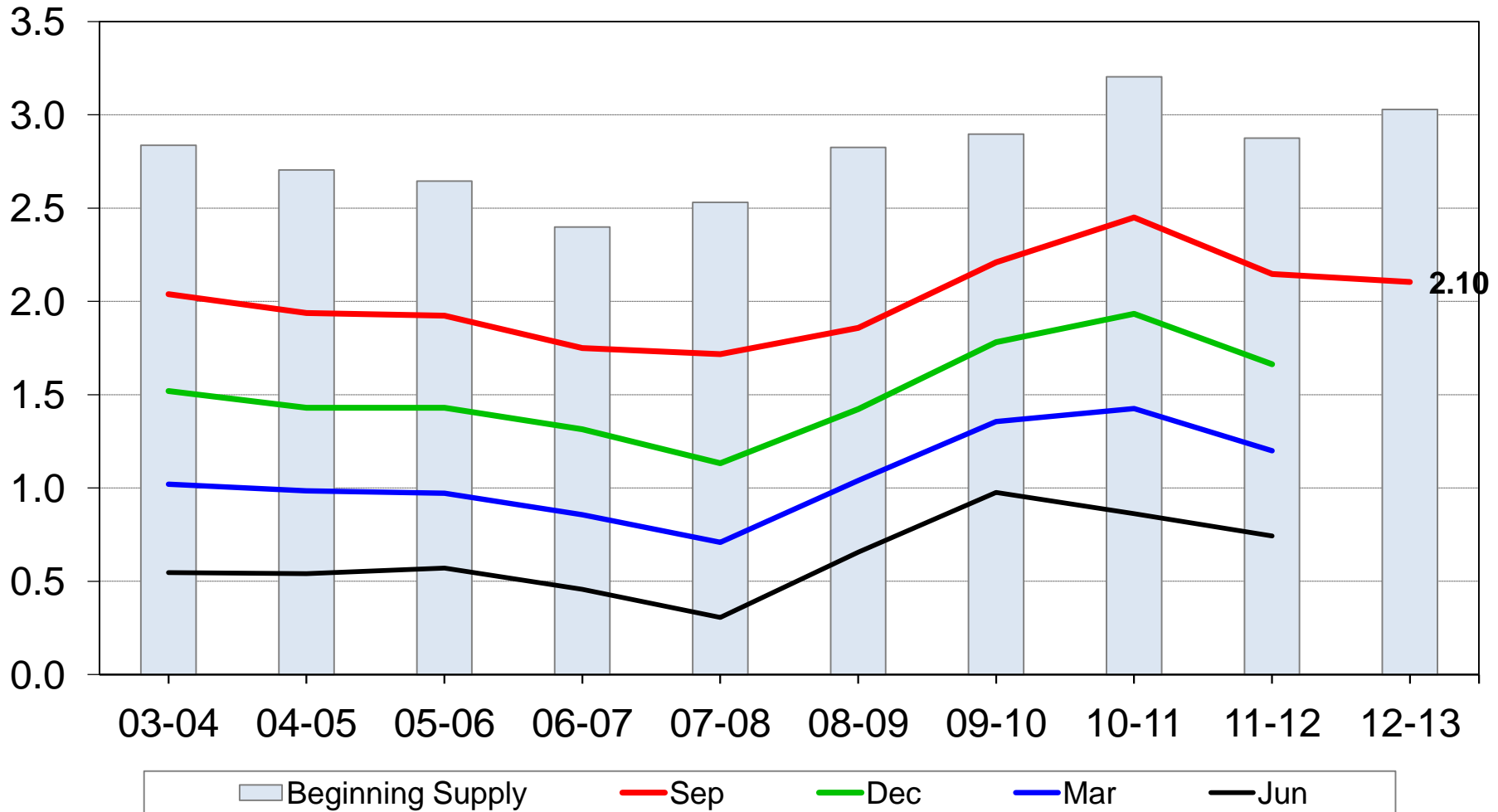
Crop	Unit	September 2012	% Change from Previous Forecast	% Change from Previous Season
Barley				
Harvested	Mil Ac	3.24	- 0.7	+ 44.9
Yield	Bu/Ac	67.9	+ 0.4	- 2.4
Production	Mil Bu	220	- 0.3	+ 41.4
Oats				
Harvested	Mil Ac	1.05	- 4.2	+ 11.3
Yield	Bu/Ac	61.3	+ 0.5	+ 7.4
Production	Mil Bu	64.0	- 3.8	+ 19.3
Rye				
Harvested	Thou Ac	248	- 9.8	+ 2.5
Yield	Bu/Ac	28.0	---	+ 7.3
Production	Mil Bu	6.94	---	+ 9.8



U.S. All Wheat Stocks



Billion bushels



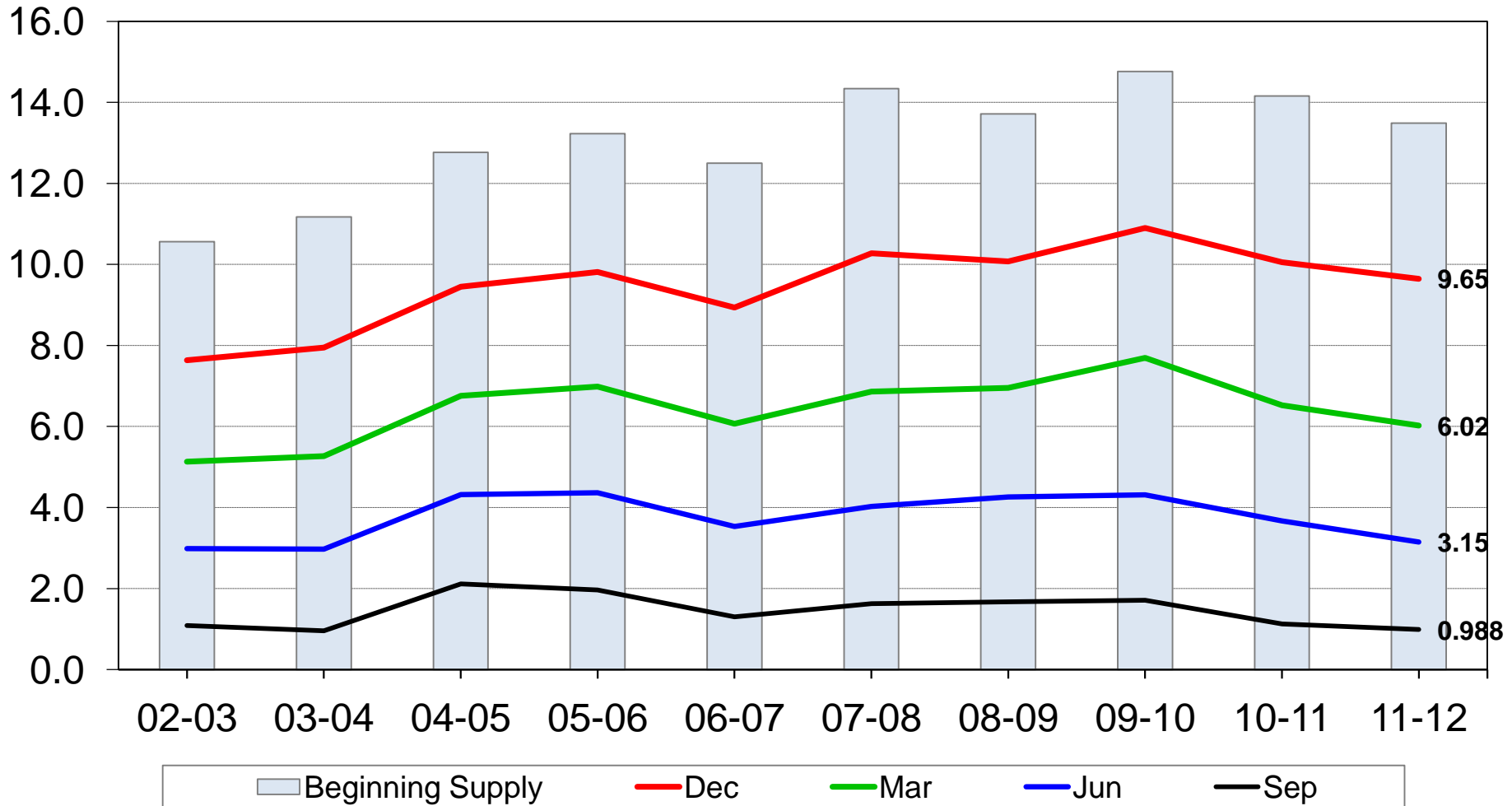
USDA-NASS
9-28-12



U.S. Corn Stocks



Billion bushels



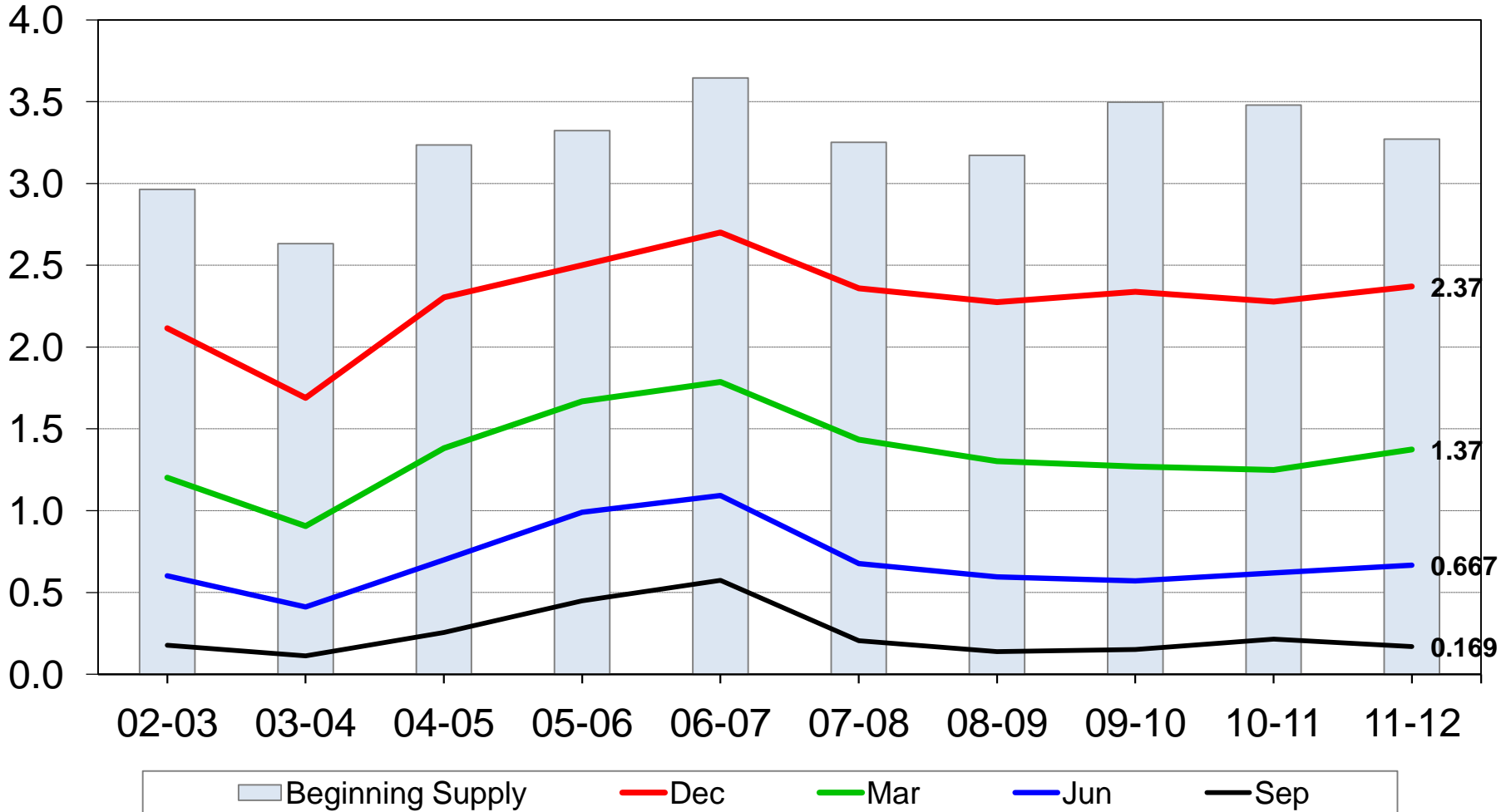
USDA-NASS
9-28-12



U.S. Soybean Stocks



Billion bushels



USDA-NASS
9-28-12



2011 Soybean Crop



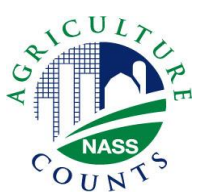
	Previous Estimates	Sept 30 Estimates	Change
	--- Mil Bushels ---		Mil Bu
Sept 1, 2011, Beginning Stocks	215	215	---
2011 Production	3,056	3,094	+ 38
Imports	* 16	* 16	---
Total Supply	3,287	3,325	+ 38
Crushings	* 1,705	* 1,705	---
Exports	* 1,360	* 1,360	---
Seed	* 88	* 88	---
Measured Disappearance	* 3,153	* 3,153	---
Ending Stocks	* 130	169	+ 39
Residual	* 4	3	- 1

* WAOB Forecasts in September WASDE Report



September 1, 2012, Grain Stocks

Crop	Unit	September 2012	% Change from September 2011
Barley	Mil Bu	197	+ 12.5
Oats	Mil Bu	85.0	+ 8.4
Sorghum	Mil Bu	22.9	- 16.4



September 1, 2012, Oilseed Stocks

Crop	Unit	September 2012	% Change from September 2011
All Sunflower	Mil Lbs	194	- 25.1
Safflower	Mil Lbs	7.15	- 50.0
Mustard Seed	Mil Lbs	9.50	+ 181.1



United States Department of Agriculture
National Agricultural Statistics Service

Upcoming Reports

October 11 Crop Production
 Cotton Ginnings

October 22 USDA Data User's Meeting

October 29 Rice Stocks

October 31 Agricultural Prices



United States Department of Agriculture
National Agricultural Statistics Service



All Reports Available At

www.nass.usda.gov

For Questions

202-720-2127

800-727-9540

nass@nass.usda.gov