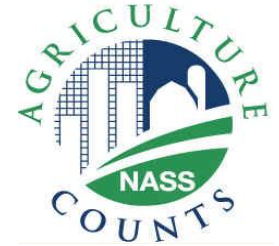




United States Department of Agriculture
National Agricultural Statistics Service



CATTLE INVENTORY

Executive Briefing

July 1, 2012

July Cattle Survey

Data Collection Period: June 29 - July 13

Sample Size:

9,971

Collection Methods

Phone, mail, internet, personal interview

Main Data Items

Total inventory, beef cows, milk cows, heifers and steers over 500 pounds, calves under 500 pounds, calf crop



U.S. Cattle Inventory July 1



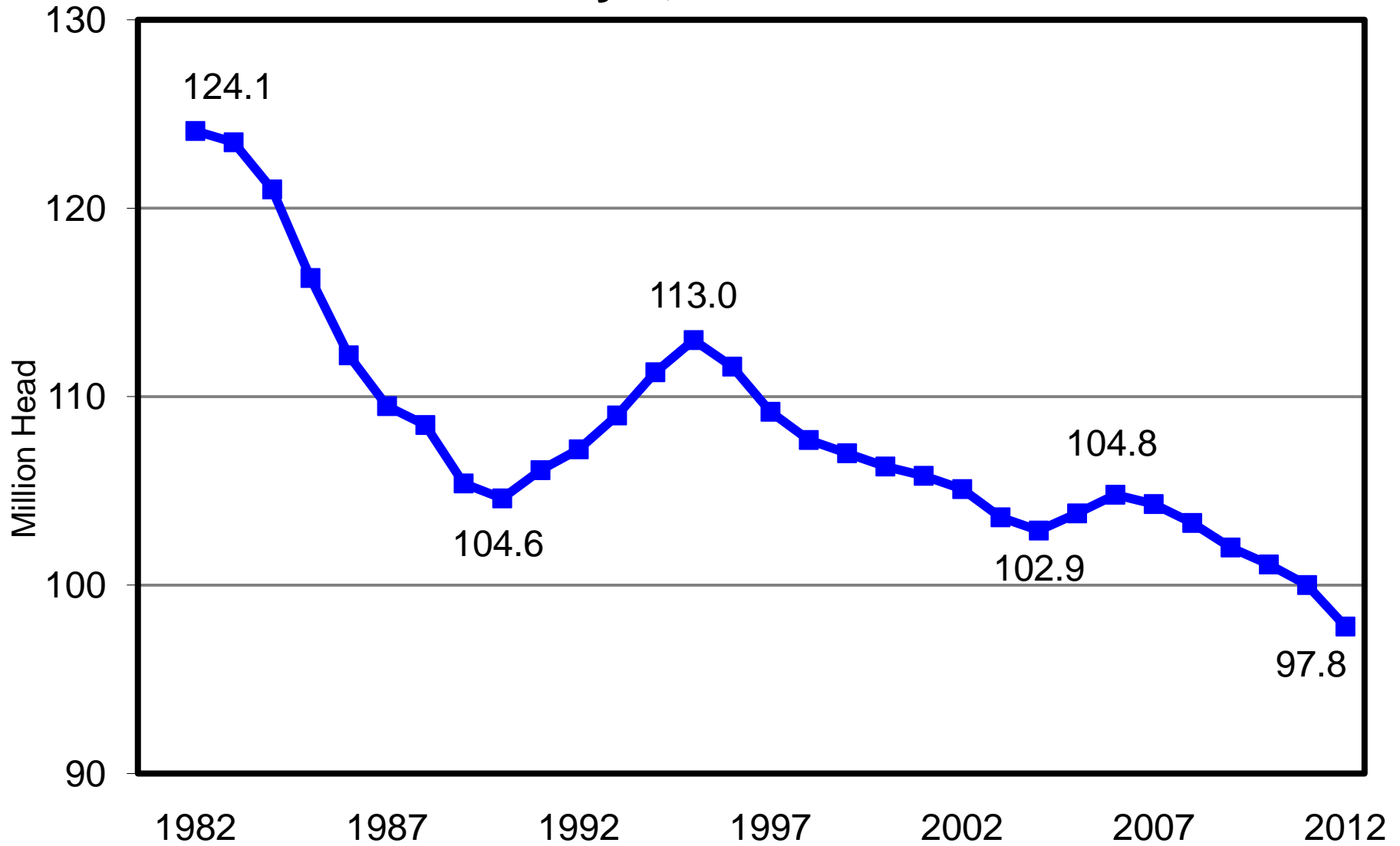
	2011	2012	% PY
	1,000 Head		
All Cattle & Calves	100,000	97,800	98%
Cows & Heifers that have Calved	40,600	39,700	98%
Beef Cows	31,400	30,500	97%
Milk Cows	9,200	9,200	100%
All Heifers 500 lbs & over	16,000	15,700	98%
For Beef Replacements	4,200	4,200	100%
For Milk Replacements	4,200	4,100	98%
Other Heifers	7,600	7,400	97%
Steers 500 lbs & over	14,200	14,000	99%
Bulls 500 lbs & over	2,000	1,900	95%
Calves under 500 lbs	27,200	26,500	97%
Cattle on Feed	12,200	12,300	101%
Calf Crop - Annual	35,313.2	34,500	98%

NASS Estimates Compared to Trade Expectations Percent of Previous Year

	USDA - NASS Estimate	Industry Average	Industry Range
Cattle Inventory			
All Cattle & Calves	97.8%	98.6%	97.9 – 99.5%
Beef Cows & Heifers that have Calved	97.1%	97.9%	97.1 – 99.0%
Calf Crop	97.7%	98.4%	98.0 – 99.2%
1000+ Cattle on Feed			
Inventory	102.7%	102.5%	100.0 – 103.8%
Placements	98.2%	98.7%	92.6 – 104.1%
Marketings	93.9%	94.0%	92.0 – 101.0%

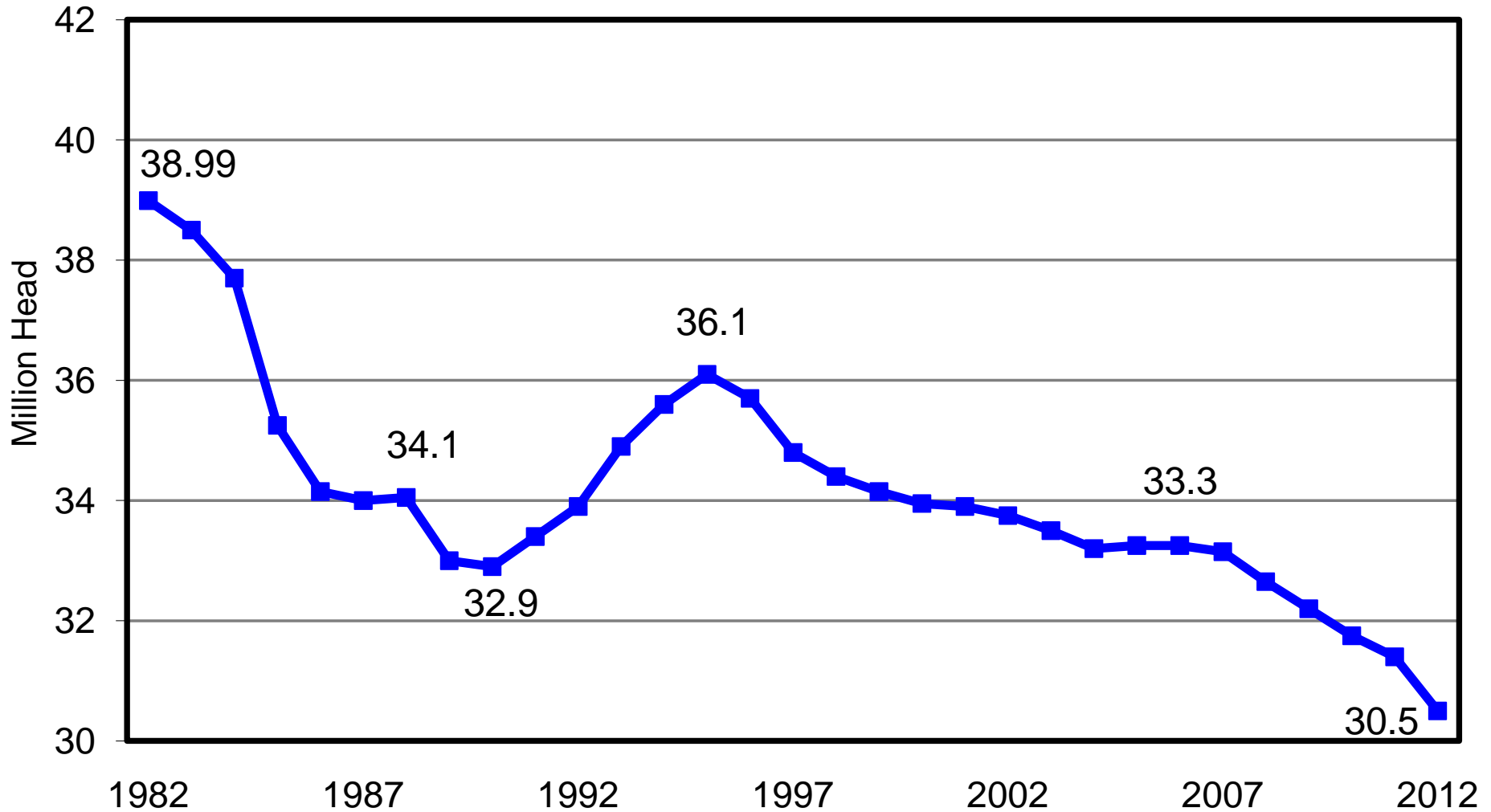
U.S. All Cattle & Calves

July 1, 1982 – 2012



U.S. Beef Cows

July 1, 1982 - 2012





U.S. Beef Cow Balance Sheet

January - June

	2011	2012
	1,000 Head	
Begin Inventory Jan 1	30,850	29,883
Deaths	308	299
Commercial Slaughter	1,738	1,588
Beef Cow Supply	28,803	27,996
Ending Inventory	31,400	30,500
Indicated Replacements	2,597	2,504
Heifers 500+ Available For Replacements	5,139	5,212
Replacement %	50.5%	48.0%

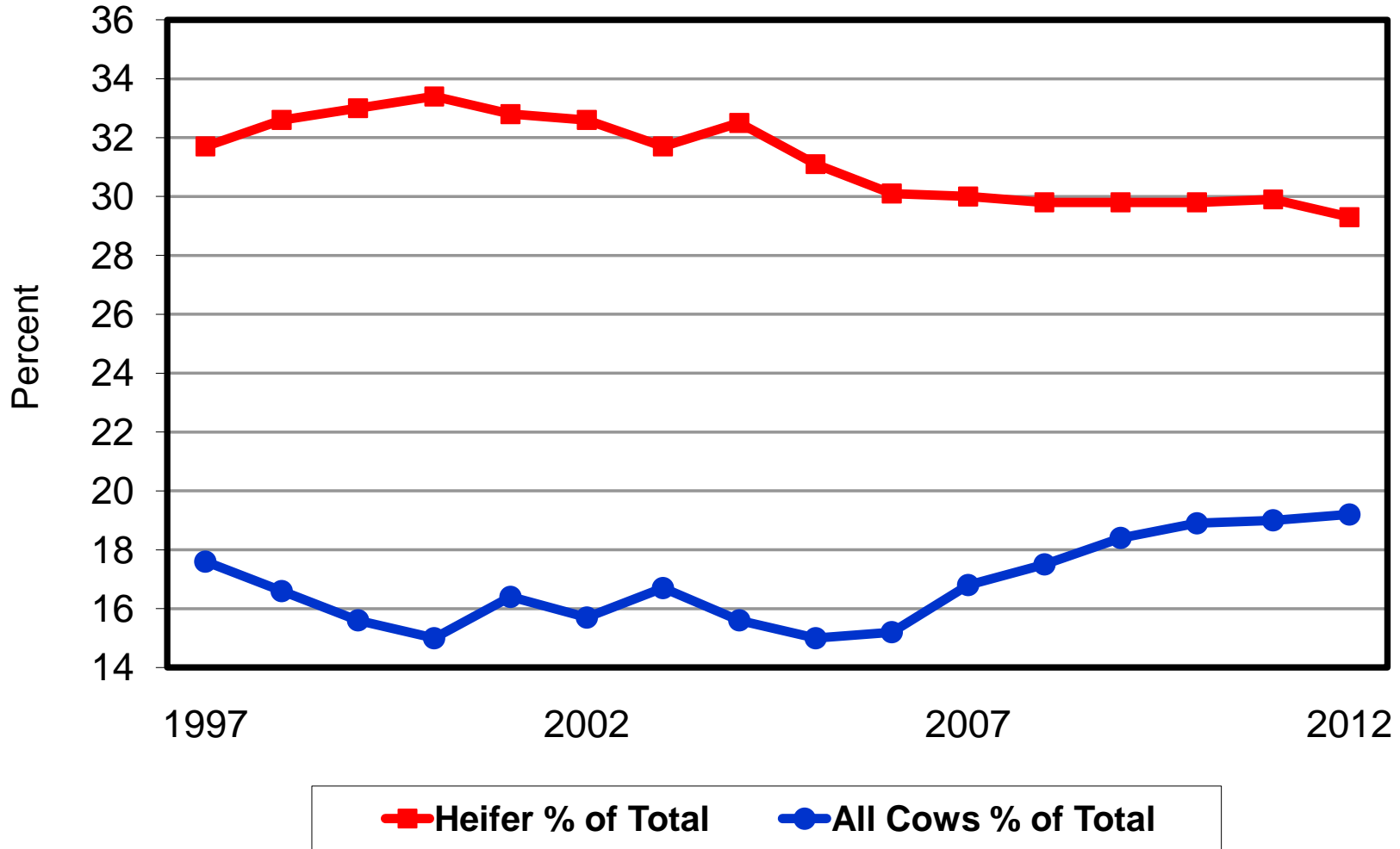
Totals may not add due to rounding



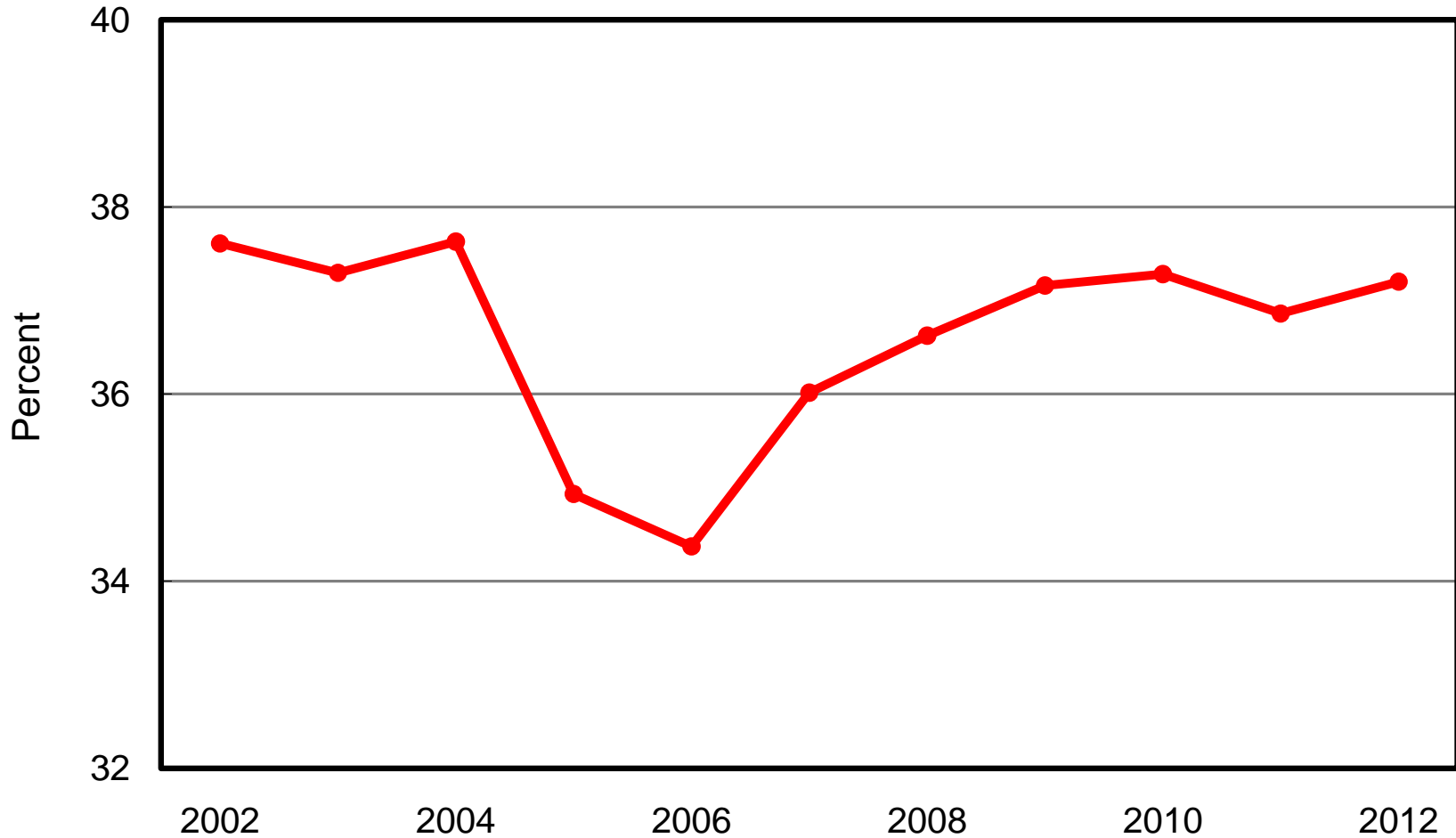
Federally Inspected Slaughter January – June 2011 - 2012

	2011	2012	Change
	←	1,000 Head	→
Total Cattle Slaughter	16,694	16,083	-611
Heifer Slaughter	4,991	4,713	-278
All Cow Slaughter	3,168	3,087	-81
Dairy Cow Slaughter	1,458	1,523	+65
Beef Cow Slaughter	1,710	1,563	-147
Steer Slaughter	8,248	8,018	-230

All Cow & Heifer Slaughter as a Percent of Total Slaughter, January 1 – June 30



Heifers as a Percent of 1000+ COF Inventory U.S. January-July Average



U.S. Cattle on Feed

July 1

	2011	2012	% PY
	1,000 Head		
All Cattle on Feed	12,200	12,300	101%
1,000+	10,433	10,710	103%
< 1,000	1,767	1,590	90%

Totals may not add due to rounding



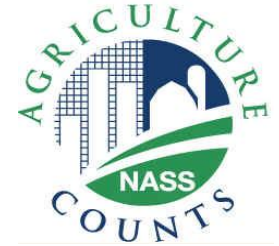
U.S. Feeder Cattle Supply Outside Feedlots July 1

	2011	2012	% PY
	1,000 Head		
Calves < 500 lbs	27,200	26,500	97%
Steers > 500 lbs	14,200	14,000	99%
Other Heifers > 500 lbs	7,600	7,400	97%
Total Supply	49,000	47,900	98%
Cattle on Feed	12,200	12,300	101%
Feeder Cattle Supply Outside Feedlots	36,800	35,600	97%

Totals may not add due to rounding



United States Department of Agriculture
National Agricultural Statistics Service



Upcoming Reports

July 31	Agricultural Prices
August 10	Crop Production
August 17	Milk Production Cattle on Feed
August 24	Livestock Slaughter



United States Department of Agriculture
National Agricultural Statistics Service



All Reports Available At
www.nass.usda.gov

For Questions Call or Email

202-720-3570

800-727-9540

nass@nass.usda.gov