



United States Department of Agriculture  
**National Agricultural Statistics Service**



# **HOGS & PIGS INVENTORY**

## **Secretary's Briefing**

# December Hogs and Pigs

Data Collection Period: November 30-  
December 14

Sample Size 10,725

## Collection Methods

Phone, mail, internet, personal interview

## Main Data Items

Total Inventory, by class, weight group, and quarter

Sows Farrowing, pig crop, and pigs per litter

# U.S. Hogs & Pigs Revisions

Quarter	Item	(000) Hd		% Revision
		Change	Estimate	
June 1, 2011	All Hogs & Pigs	+620	65,320	+1.0%
	Pig Crop	+401	29,252	+1.4%
September 1, 2011	All Hogs & Pigs	+145	66,744	+0.2%



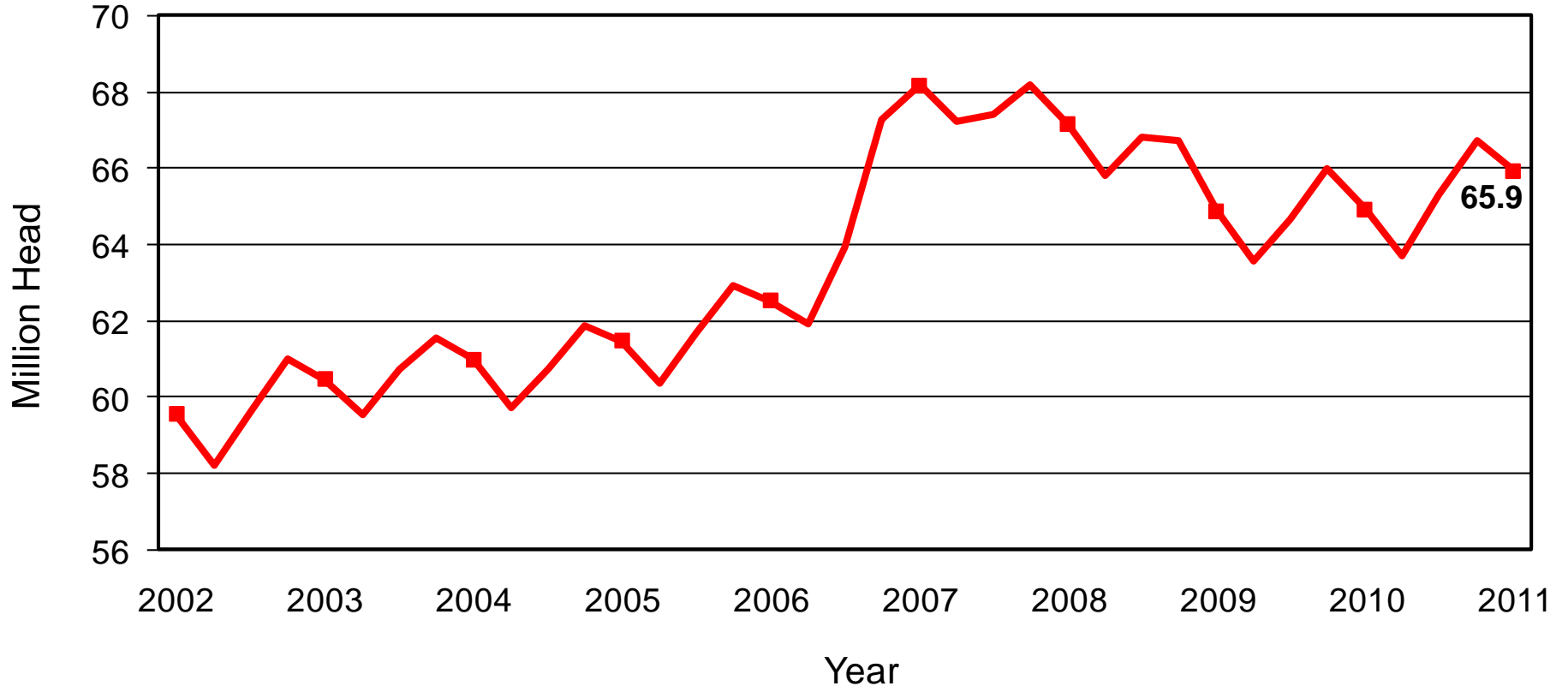
# U.S. Hogs & Pigs Inventory

## December 1, 2011

<b>Inventory Items</b>	<b>(000) Hd</b>	<b>% PY</b>
All Hogs & Pigs	65,931	102%
Breeding Hogs	5,803	100%
Market Hogs	60,128	102%
Sep – Nov Pig Crop	29,014	102%
Sows Farrowing	2,894	100%
<b>Litter Rate</b>	<b>Number</b>	<b>% PY</b>
Sep – Nov 2011	10.02	101%
<b>Farrowing Intentions</b>	<b>(000) Hd</b>	<b>% PY</b>
Dec 2011 – Feb 2012	2,865	101%
Mar – May 2012	2,890	99%



# U.S. Quarterly Hogs and Pigs Inventory December 1, 2011

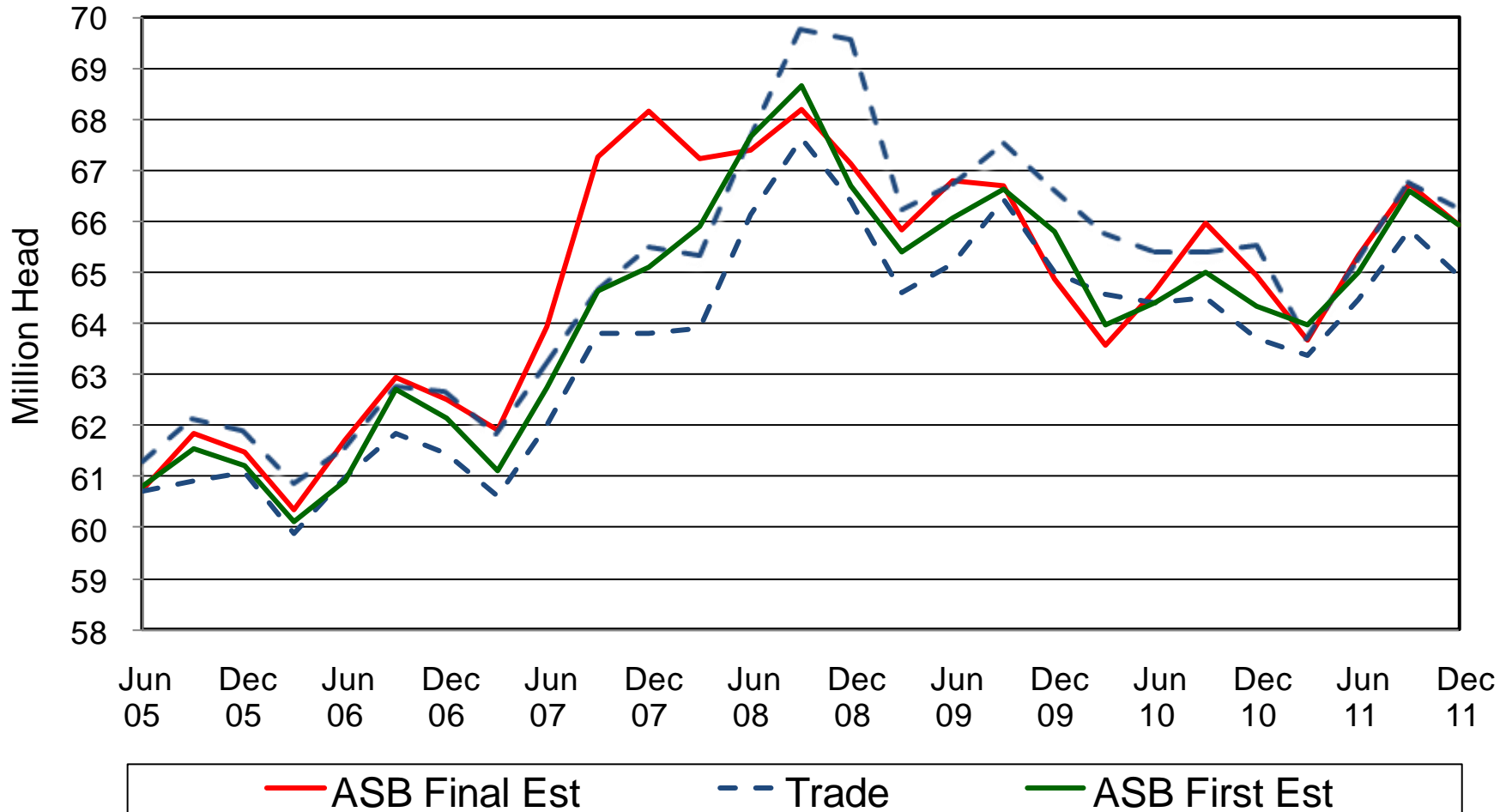




# NASS Estimates Compared to Trade Expectations Percent of Previous Year

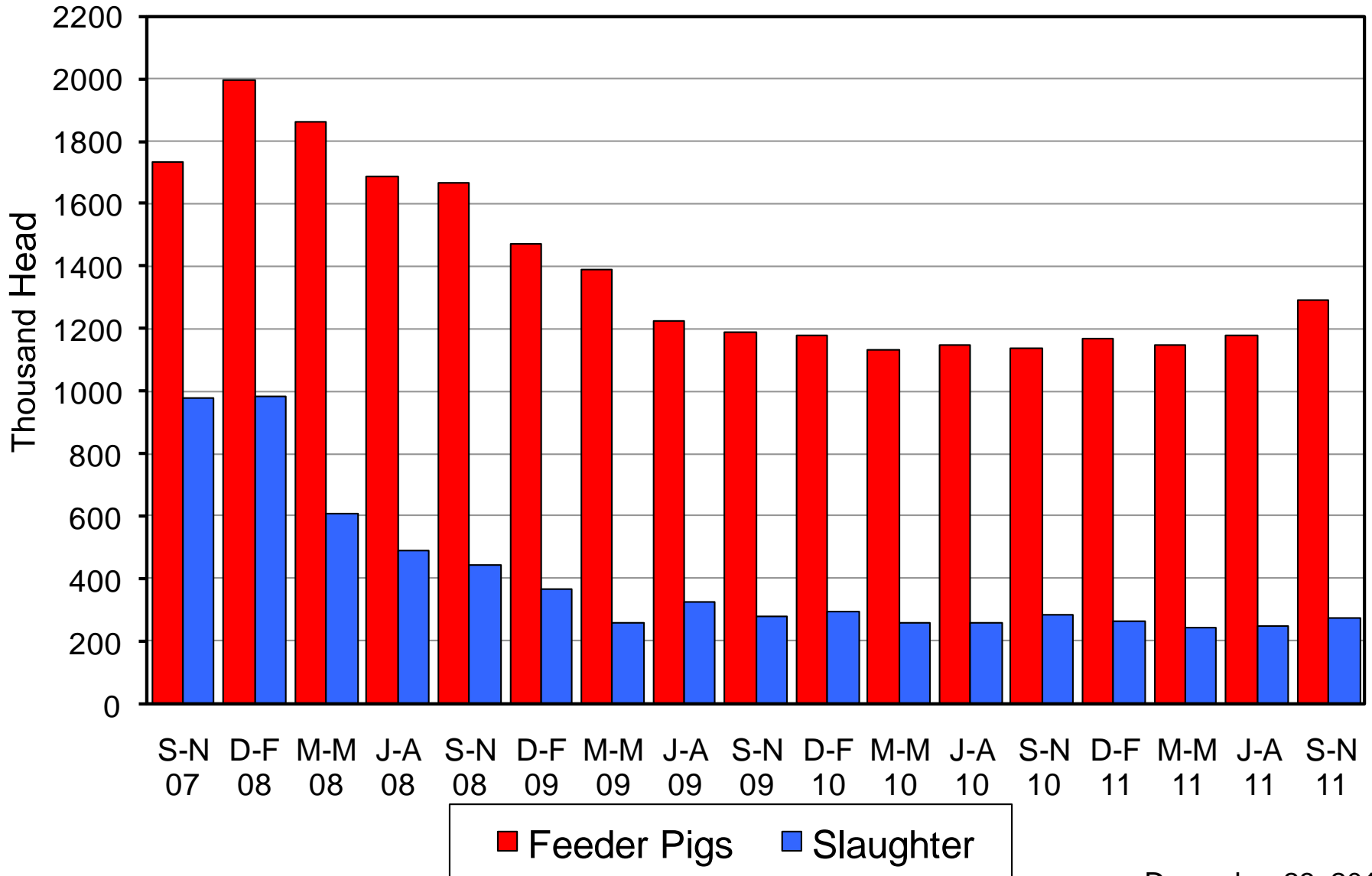
<b>Inventory Items</b>	<b>NASS Estimate</b>	<b>Trade Average</b>	<b>Trade Range</b>
All Hogs & Pigs	101.5%	101.3%	100.0% – 102.0%
Breeding Hogs	100.4%	100.8%	100.4% – 101.0%
Market Hogs	101.7%	101.3%	100.0% – 102.0%
Sept – Nov Pig Crop	101.8%	101.6%	101.0% – 102.0%
<b>Farrowing Intentions</b>			
Dec 2011– Feb 2012	100.8%	100.6%	100.0% – 101.1%
Mar – May 2012	99.1%	100.8%	100.5% – 101.3%

# All Hogs and Pigs Board vs Trade Expectations



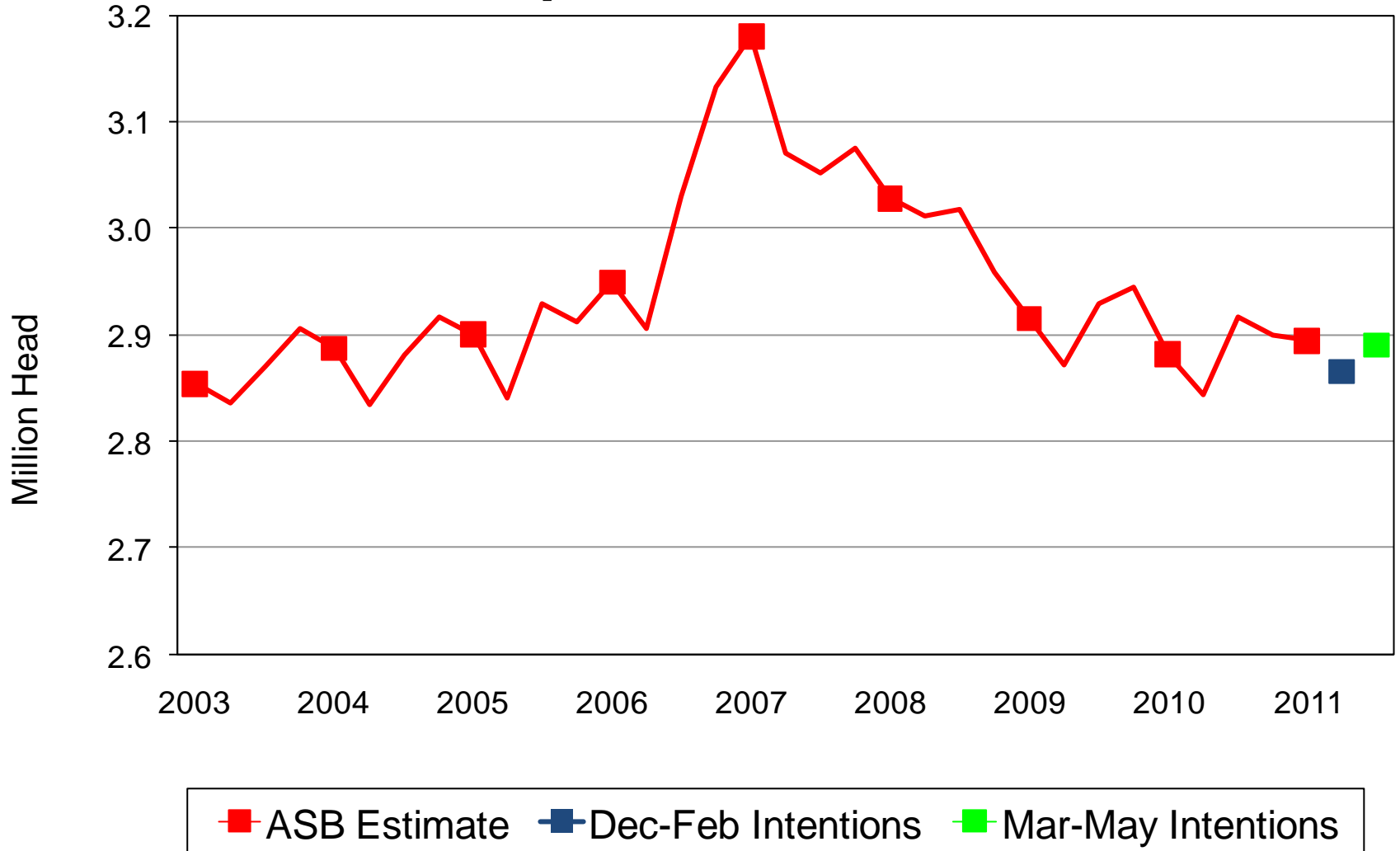
# Canadian Imports by Quarter

## Feeder Pigs and Slaughter Hogs





# U.S. Quarterly Sows Farrowed September - November



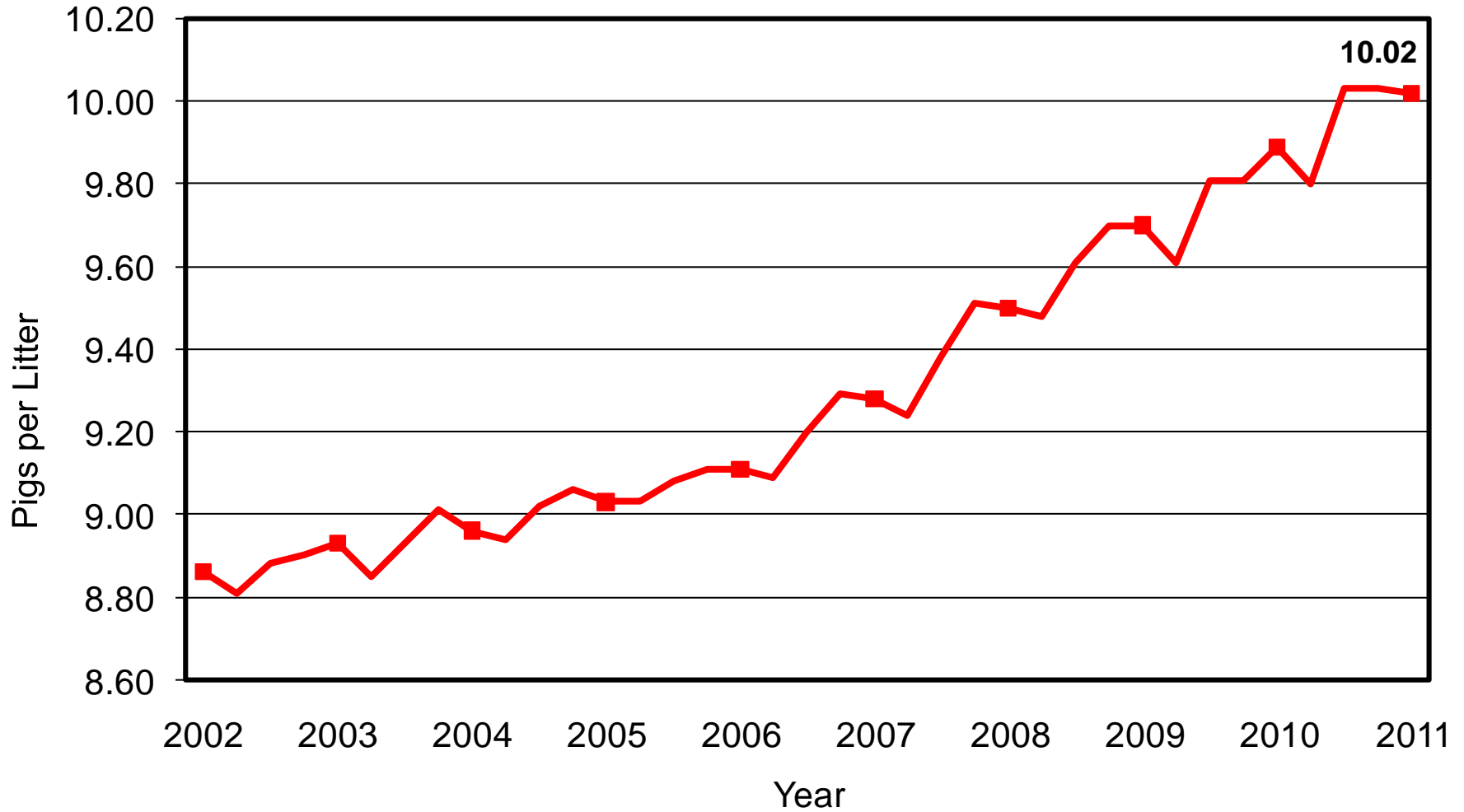


# Breeding Herd Inventory Disposition & Utilization

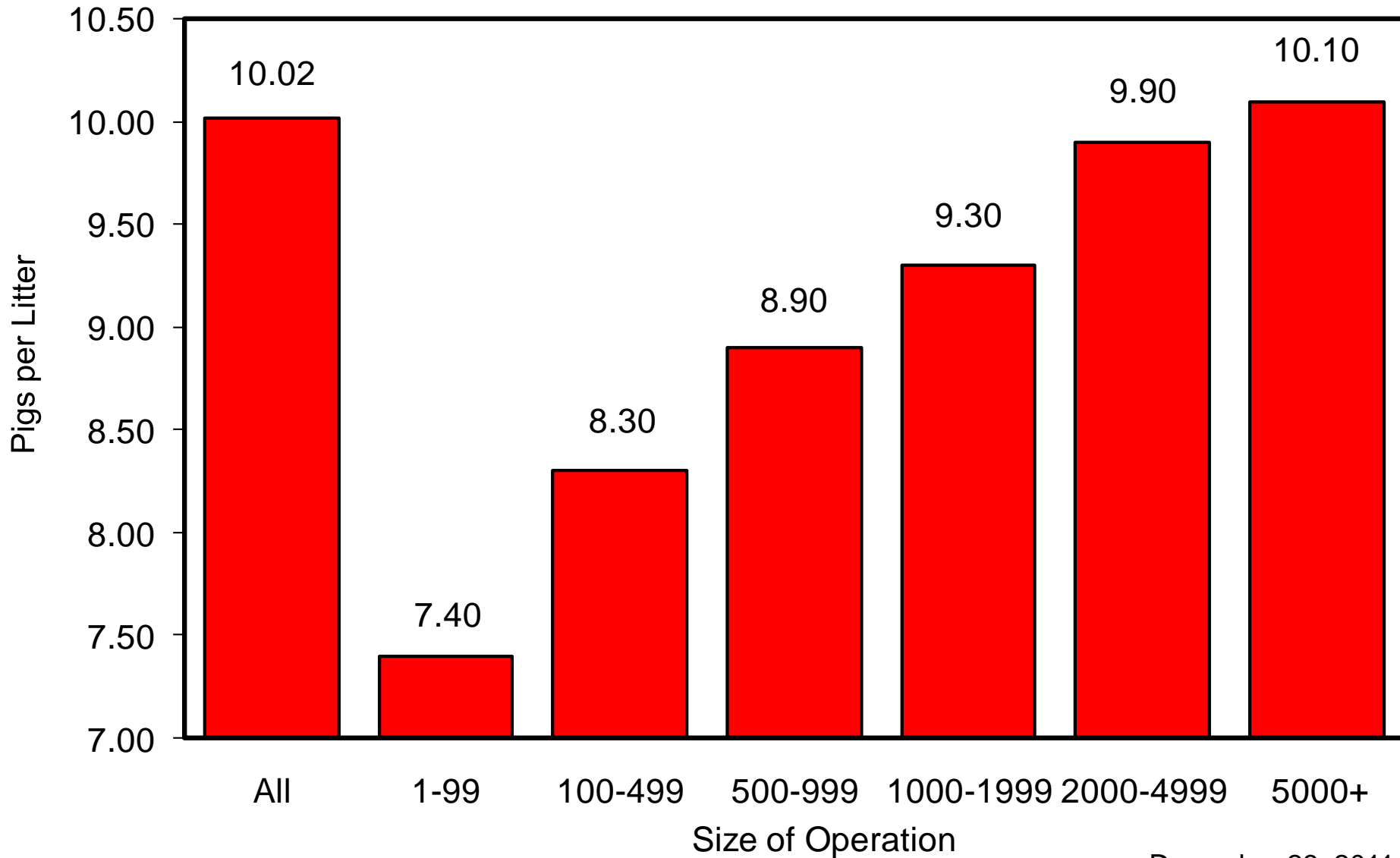


Year	Sep 1 Estimate	Slaughter	Additions	Dec 1 Estimate	Sow Utilization
	(000) Hd	(000) Hd	(000) Hd	(000) Hd	Percent
2002	6,051	877	884	6,058	47%
2003	5,948	872	943	6,019	48%
2004	5,972	875	883	5,980	48%
2005	5,993	866	904	6,031	48%
2006	6,099	947	965	6,116	48%
2007	6,208	976	1,001	6,233	51%
2008	6,061	964	965	6,062	50%
2009	5,875	941	917	5,850	50%
2010	5,770	849	858	5,778	50%
2011	5,806	875	872	5,803	50%

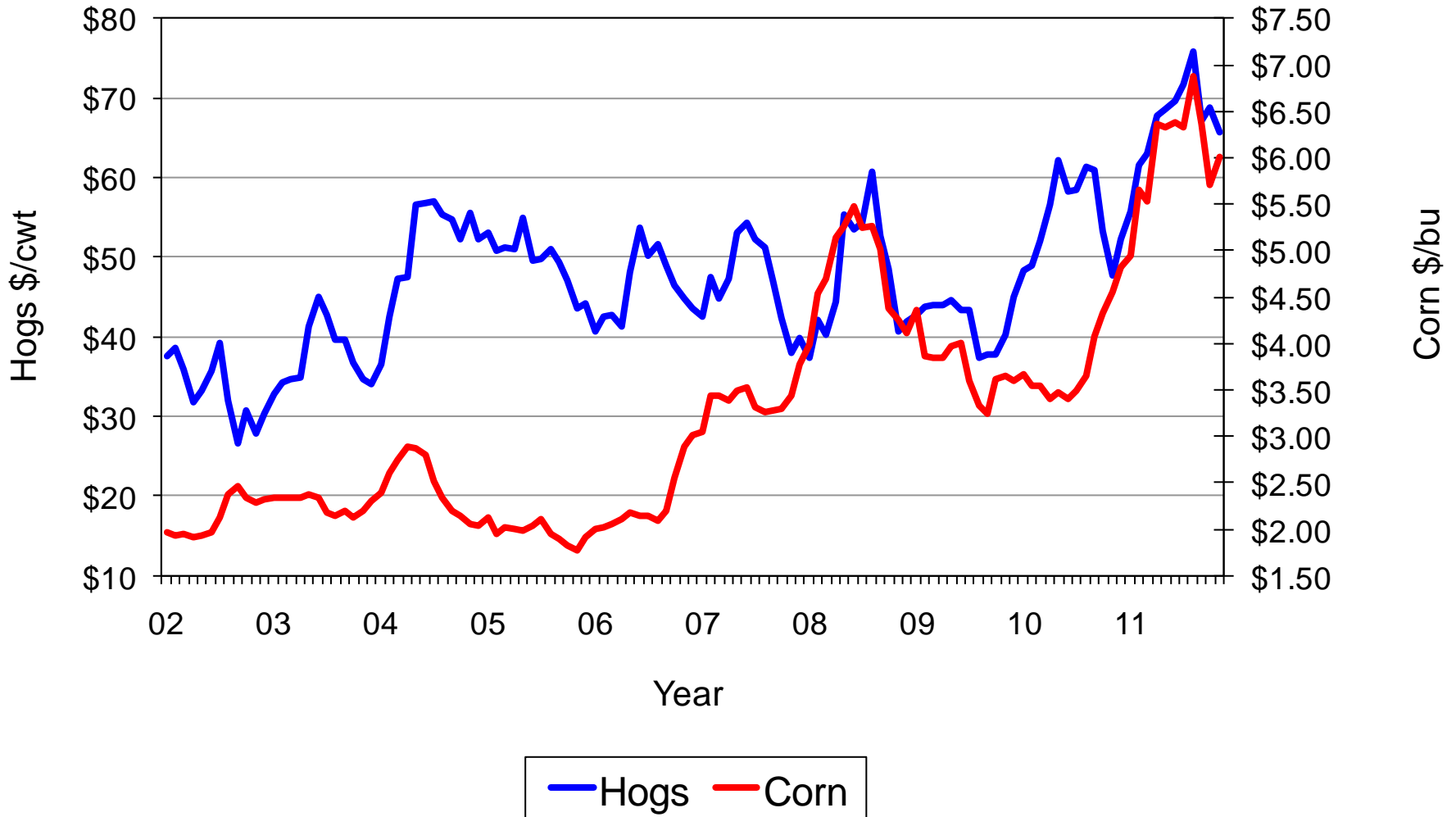
# U.S. Quarterly Pigs per Litter September - November



# U.S. Pigs per Litter by Size of Operation September – November 2011

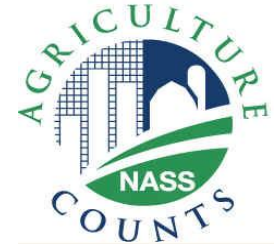


# U.S. Prices Received by Farmers for Hogs & Corn





United States Department of Agriculture  
**National Agricultural Statistics Service**



## Upcoming Reports

December 30	Agricultural Prices
January 12	Grain Stocks, Crop Production
January 20	Cattle on Feed
January 27	Cattle, Sheep and Goats