



United States Department of Agriculture  
**National Agricultural Statistics Service**

---

---



**SMALL GRAINS SUMMARY**  
**GRAIN STOCKS**  
**RICE STOCKS**

Executive Summary

September 30, 2011

8:30 AM



# Contents

Field Crops	Grain Stocks	Oilseed Stocks
Wheat	Corn	Sunflower
Barley	Soybeans	Safflower
Oats	Wheat	Mustard Seed
Rye	Barley	
	Oats	
	Sorghum	
	Rice	



# Survey Overview

	<b>September Ag Survey</b>
Survey Type	Farmer Reported
Collection Method	Mail, Phone, Internet, Personal Interview
Crops Included	Barley, Oats, Wheat, Rye Stocks – All Crops
States	All except AK and HI
Sample Size	66,255 farms
Collection Period	August 30 – September 20



# Small Grains Annual Summary

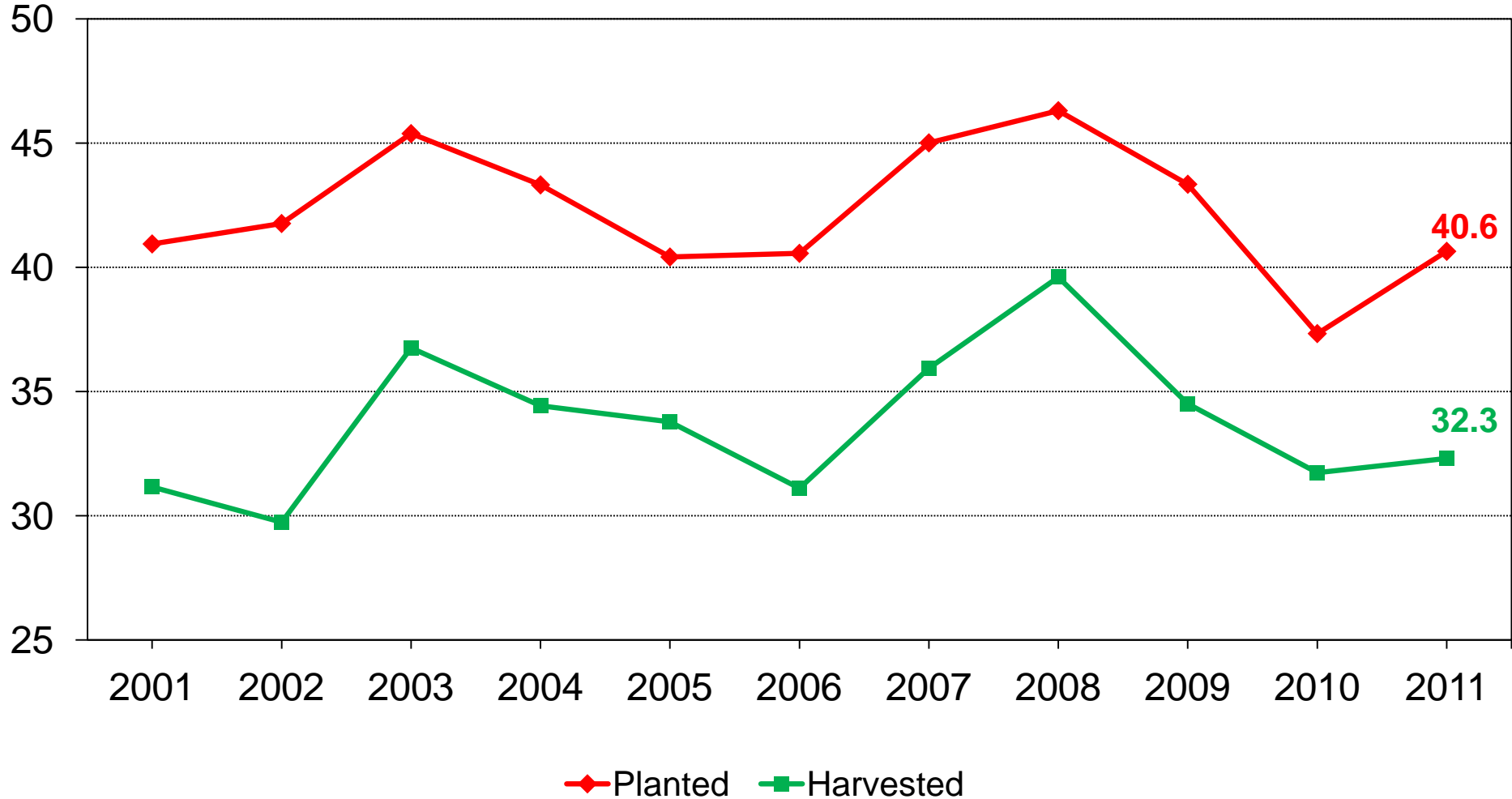
Crop	Unit	September 2011	% Change from Previous Forecast	% Change from Previous Season
<b>Winter Wheat</b>				
Harvested	Mil Ac	32.3	+ <0.1	+ 1.8
Yield	Bu/Ac	46.2	- 0.2	- 1.3
Production	Bil Bu	1.49	- 0.3	+ 0.6
<b>Other Spring</b>				
Harvested	Mil Ac	12.1	- 1.6	- 9.6
Yield	Bu/Ac	38.3	- 9.9	- 16.9
Production	Mil Bu	462	- 11.4	- 24.9
<b>Durum</b>				
Harvested	Mil Ac	1.32	- 1.9	- 47.5
Yield	Bu/Ac	39.3	- 7.3	- 6.7
Production	Mil Bu	51.9	- 9.2	- 51.1
<b>All Wheat</b>				
Production	Bil Bu	2.01	- 3.3	- 9.0



# U.S. Winter Wheat Acres



Million acres

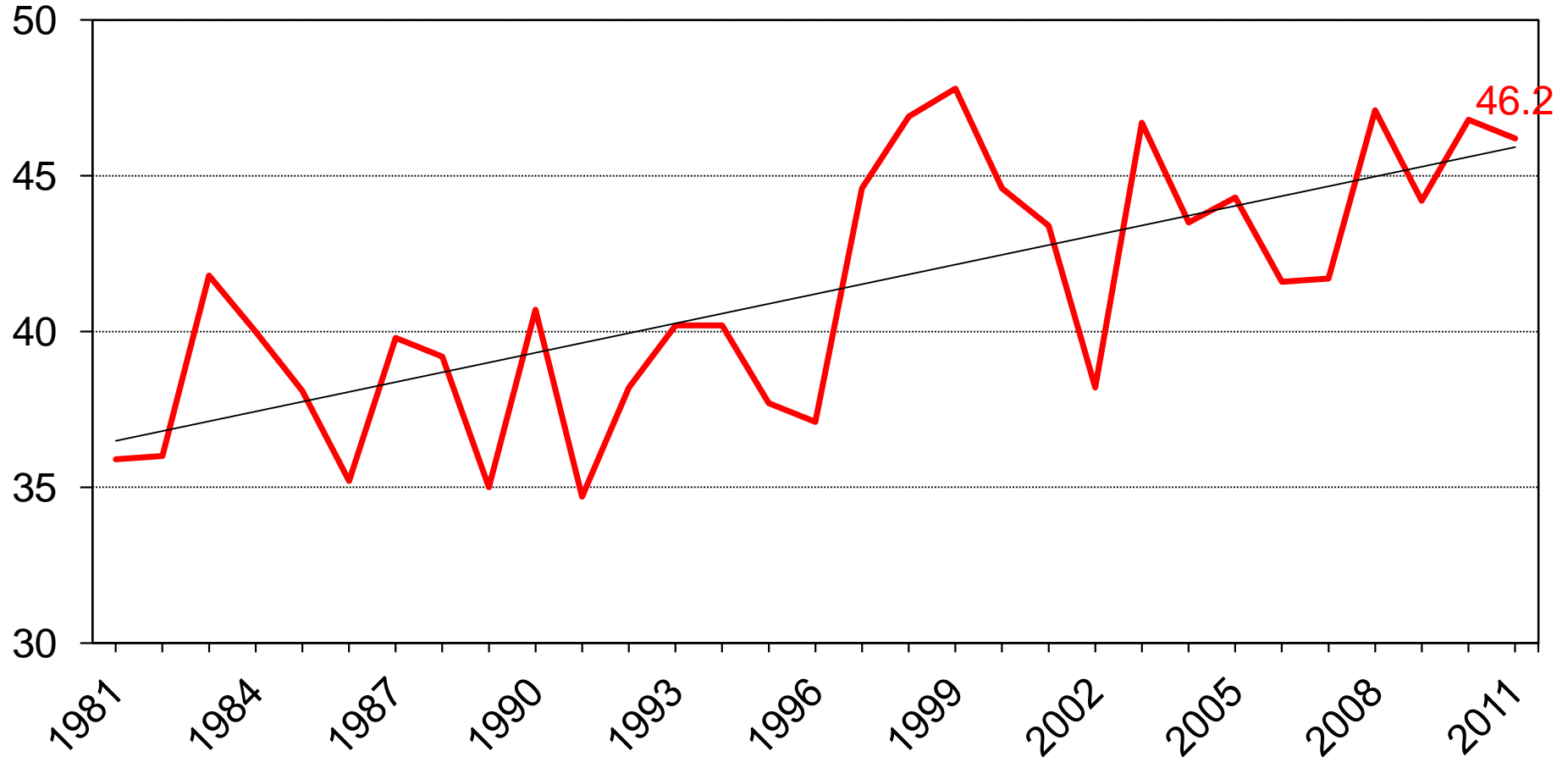




# U.S. Winter Wheat Yield



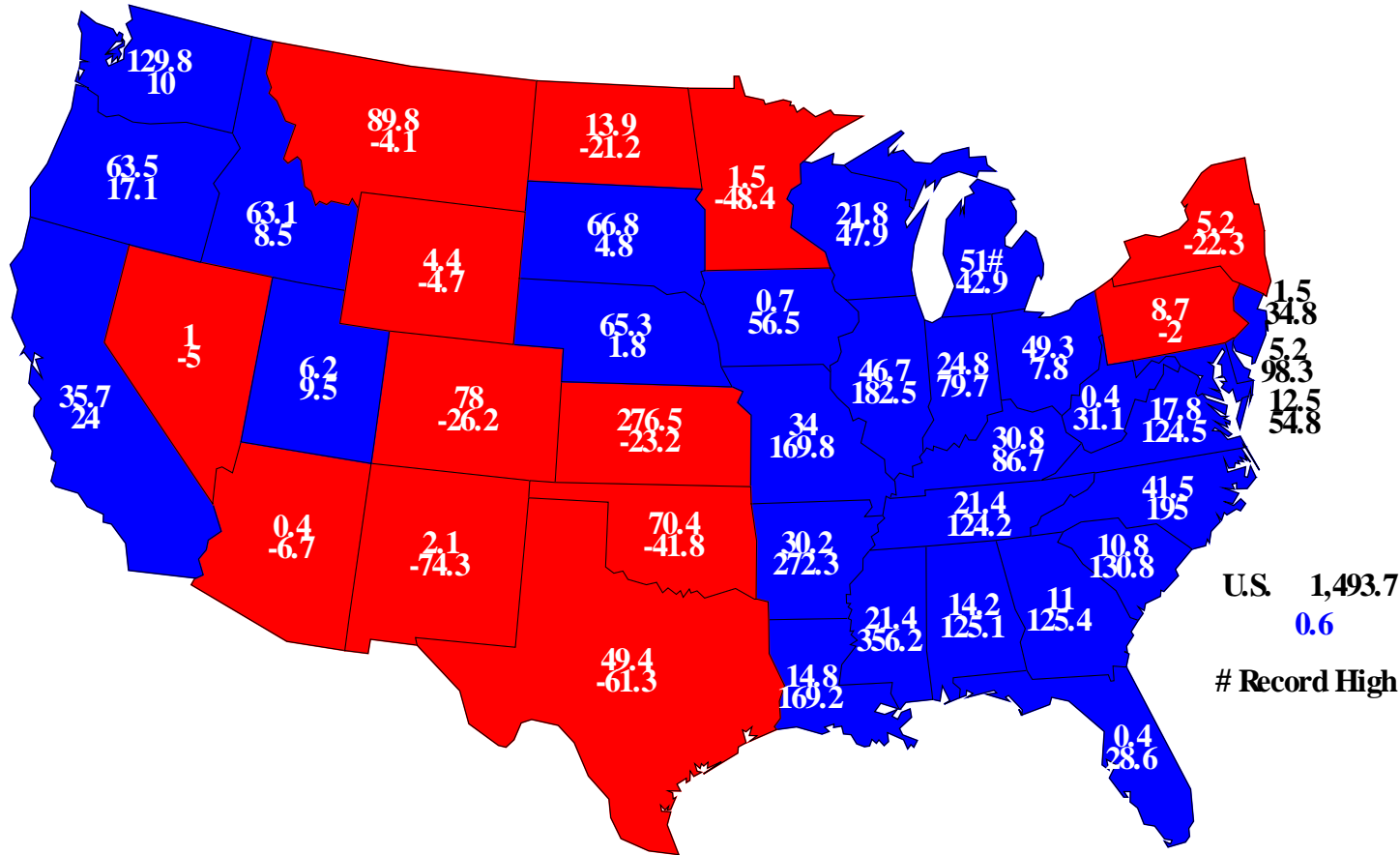
Bushels/Acre





# Winter Wheat Production, 2011

## Million Bu. and Percent Change From Previous Year

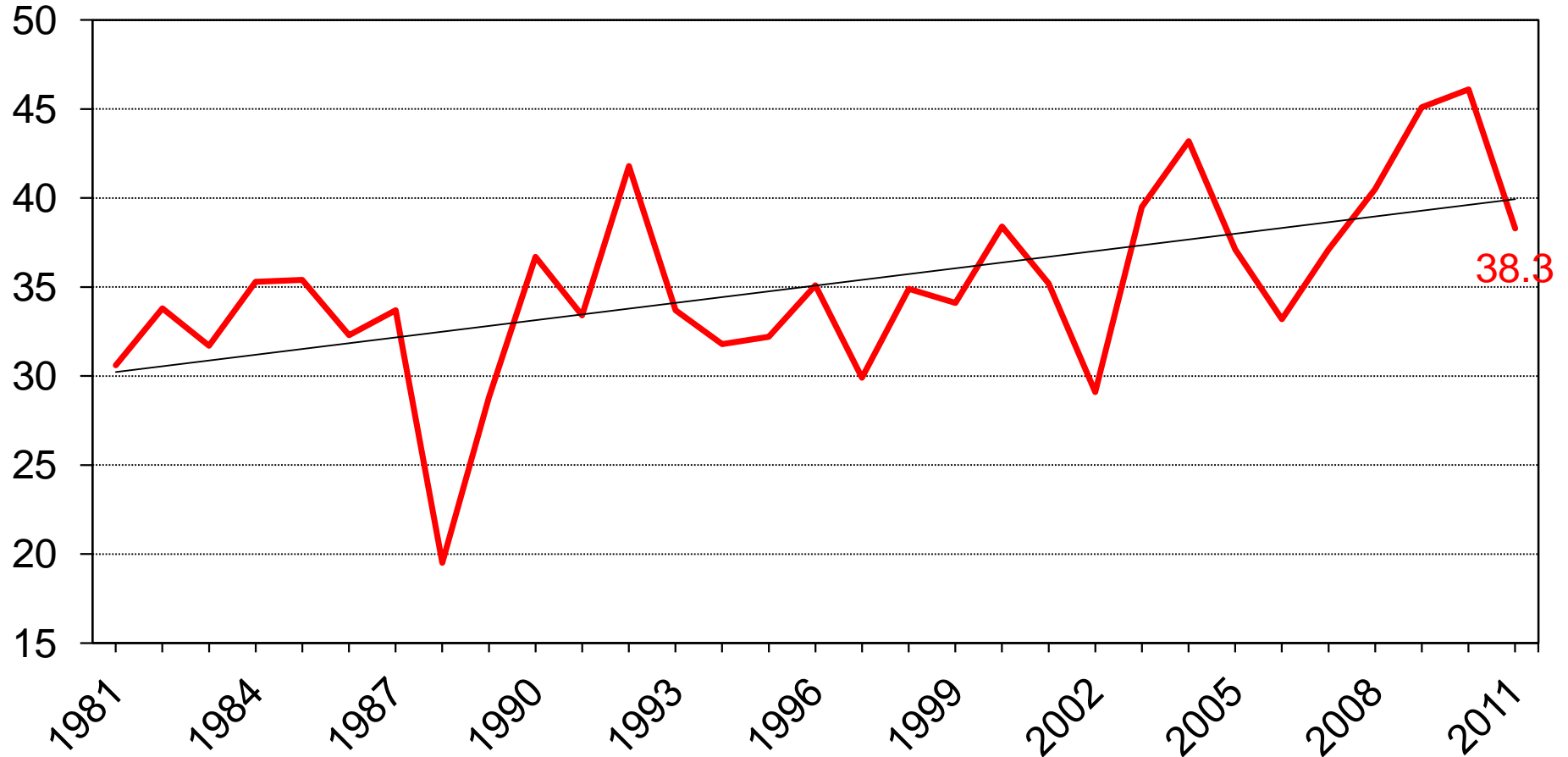




# U.S. Other Spring Wheat Yield



Bushels/Acre

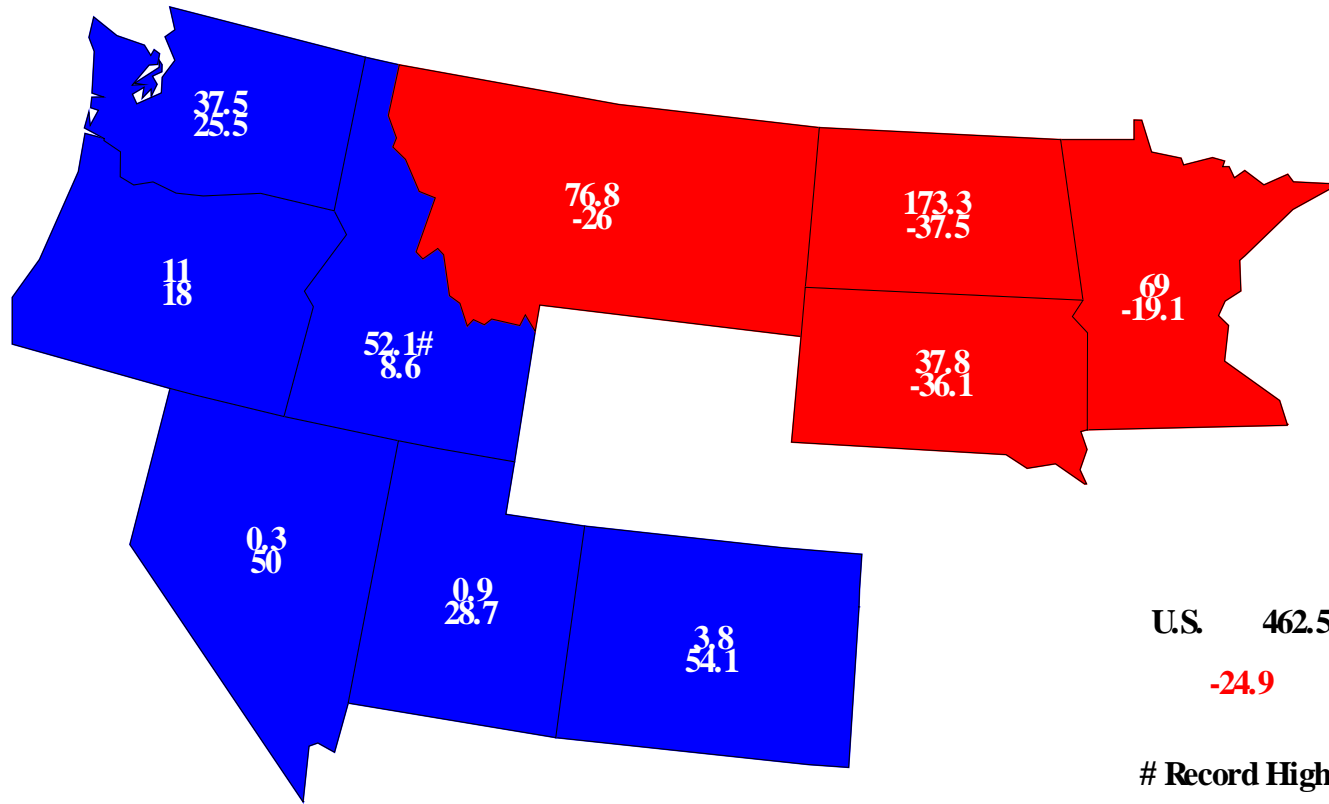






# Other Spring Wheat Production, 2011

## Million Bu. and Percent Change From Previous Year

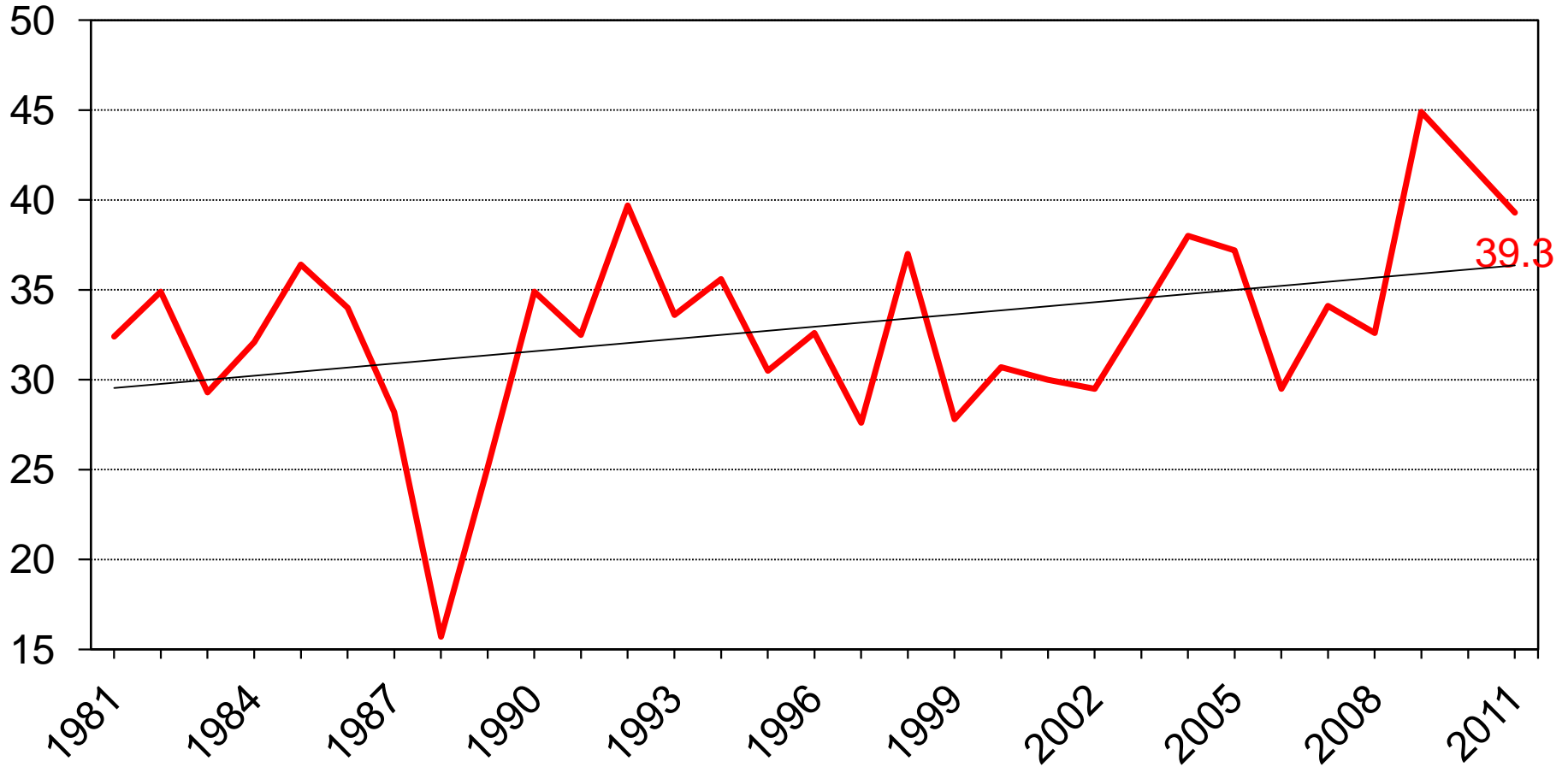




# U.S. Durum Wheat Yield



Bushels/Acre

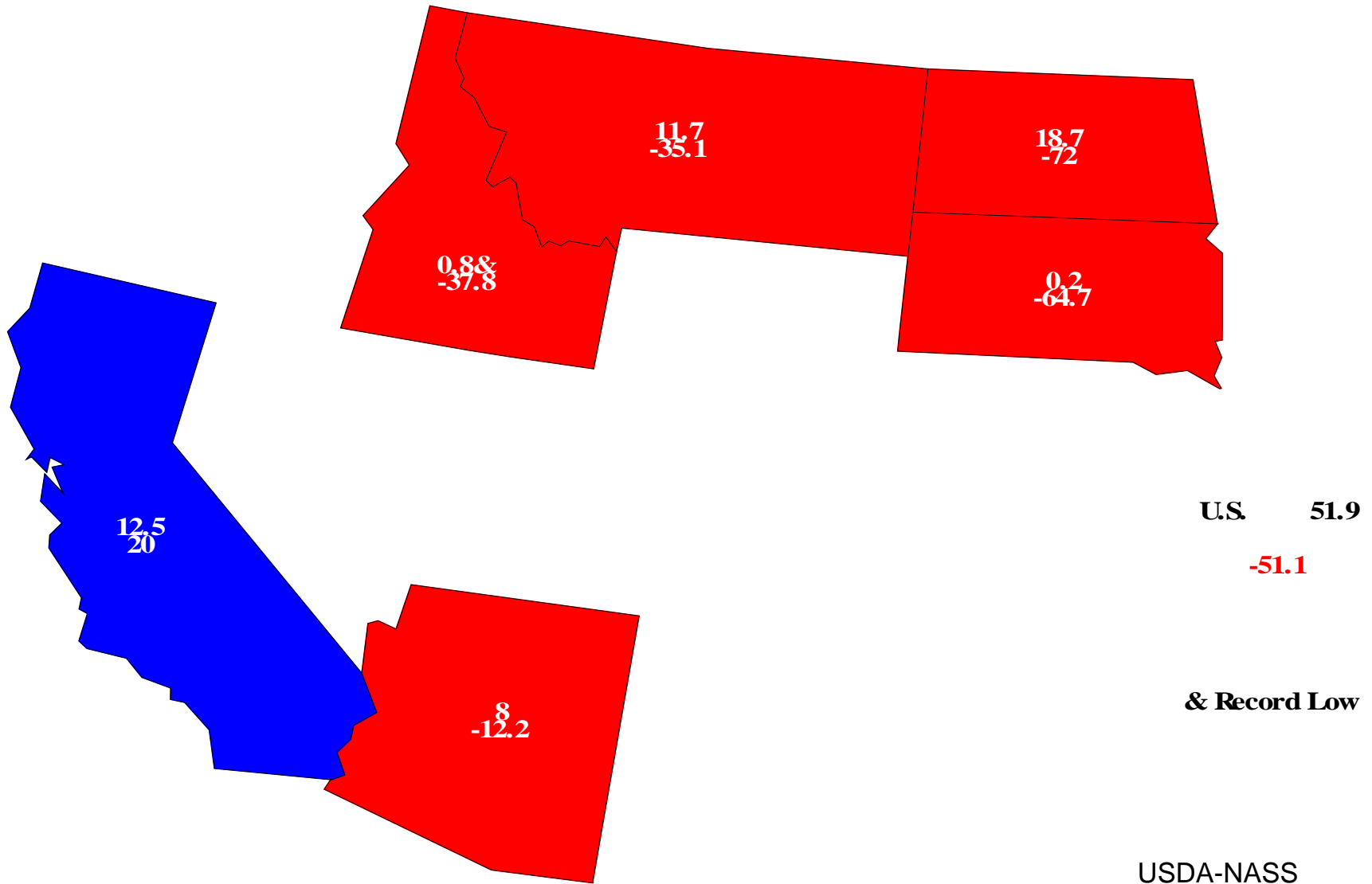




# Durum Wheat Production, 2011



## Million Bu. and Percent Change From Previous Year

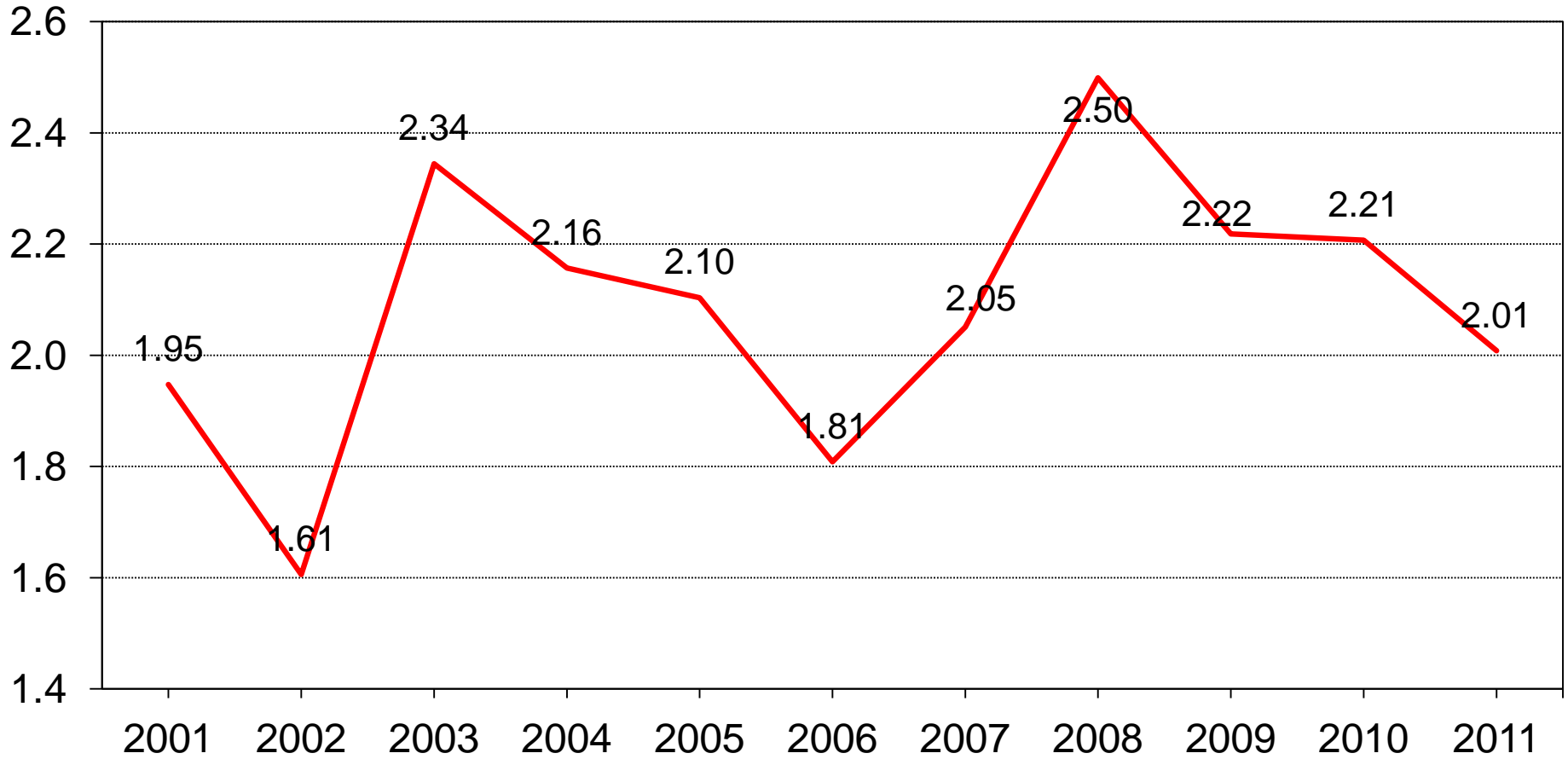




# U.S. All Wheat Production



Billion Bushels





# Small Grains Annual Summary



Crop	Unit	September 2011	% Change from Previous Forecast	% Change from Previous Season
<b>Barley</b>				
Harvested	Mil Ac	2.24	- 6.3	- 9.2
Yield	Bu/Ac	69.2	- 1.7	- 5.3
Production	Mil Bu	155	- 7.8	- 14.0
<b>Oats</b>				
Harvested	Thou Ac	940	+ 0.6	- 25.6
Yield	Bu/Ac	57.5	- 6.7	- 10.6
Production	Mil Bu	54.0	- 6.1	- 33.5
<b>Rye</b>				
Harvested	Thou Ac	242	NC	- 8.7
Yield	Bu/Ac	26.1	---	- 6.8
Production	Mil Bu	6.33	---	- 14.9



# Small Grains Annual Summary

<b>Crop</b>	<b>2011 % of Acres Unharvested</b>	<b>2010 % of Acres Unharvested</b>	<b>2009 % of Acres Unharvested</b>
<b>Other Spring Wheat</b>	<b>30.5</b>	<b>26.7</b>	<b>33.2</b>
<b>Durum Wheat</b>	<b>62.1</b>	<b>63.0</b>	<b>44.0</b>
<b>Barley</b>	<b>25.9</b>	<b>25.1</b>	<b>18.2</b>
<b>Oats</b>	<b>17.9</b>	<b>9.3</b>	<b>16.2</b>



# Small Grains Re-Interview

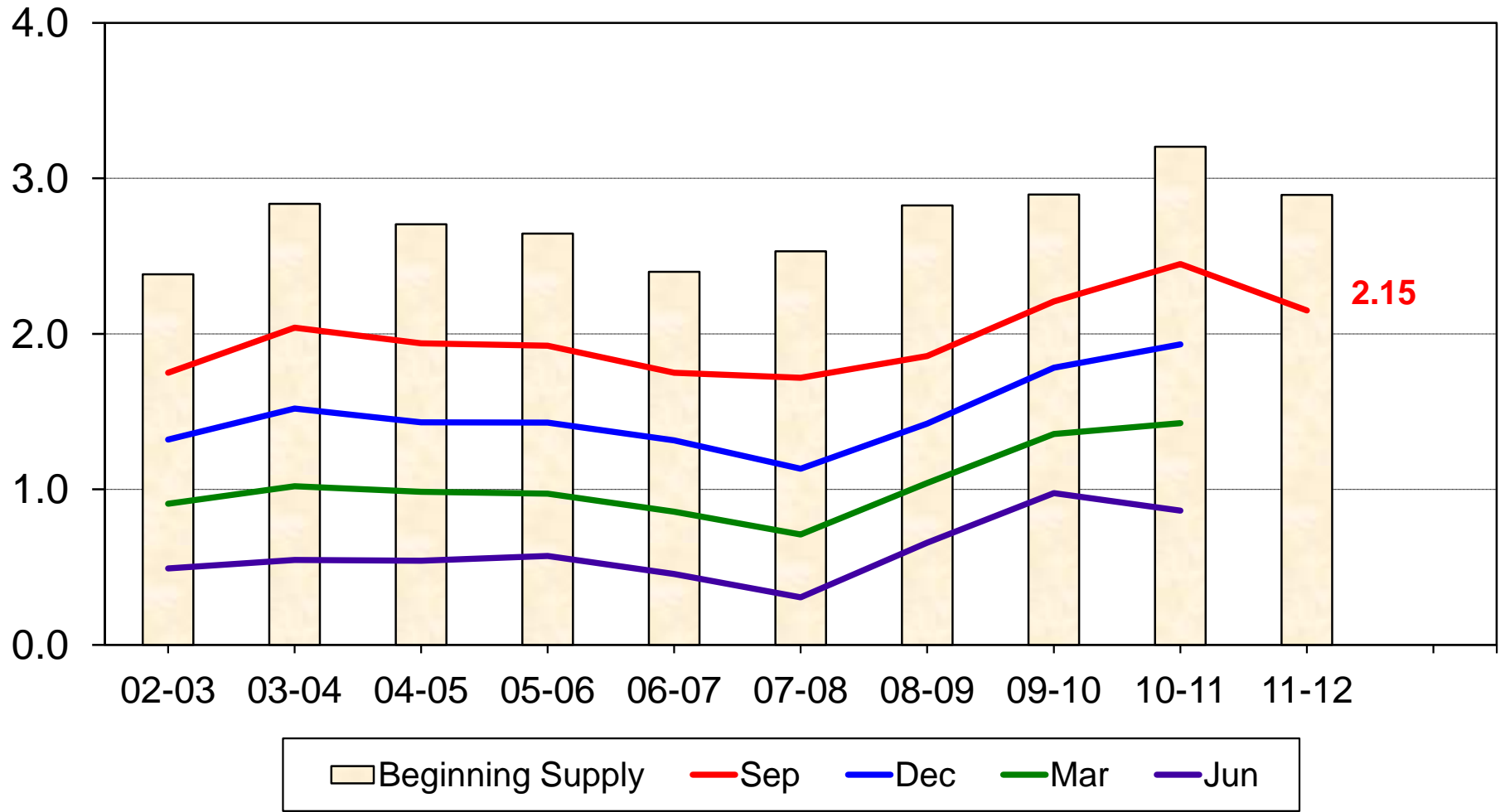
<b>Durum Wheat</b>	<b>Other Spring Wheat</b>	<b>Barley</b>	<b>Oats</b>
<b>ID</b>	<b>ID</b>	<b>ID</b>	<b>ID</b>
<b>MT</b>	<b>MT</b>	<b>ME</b>	<b>ME</b>
<b>ND</b>	<b>ND</b>	<b>MT</b>	<b>MT</b>
	<b>OR</b>	<b>ND</b>	<b>ND</b>
	<b>WA</b>	<b>OR</b>	<b>OR</b>
		<b>WA</b>	<b>WA</b>



# U.S. All Wheat Stocks



Billion Bushels



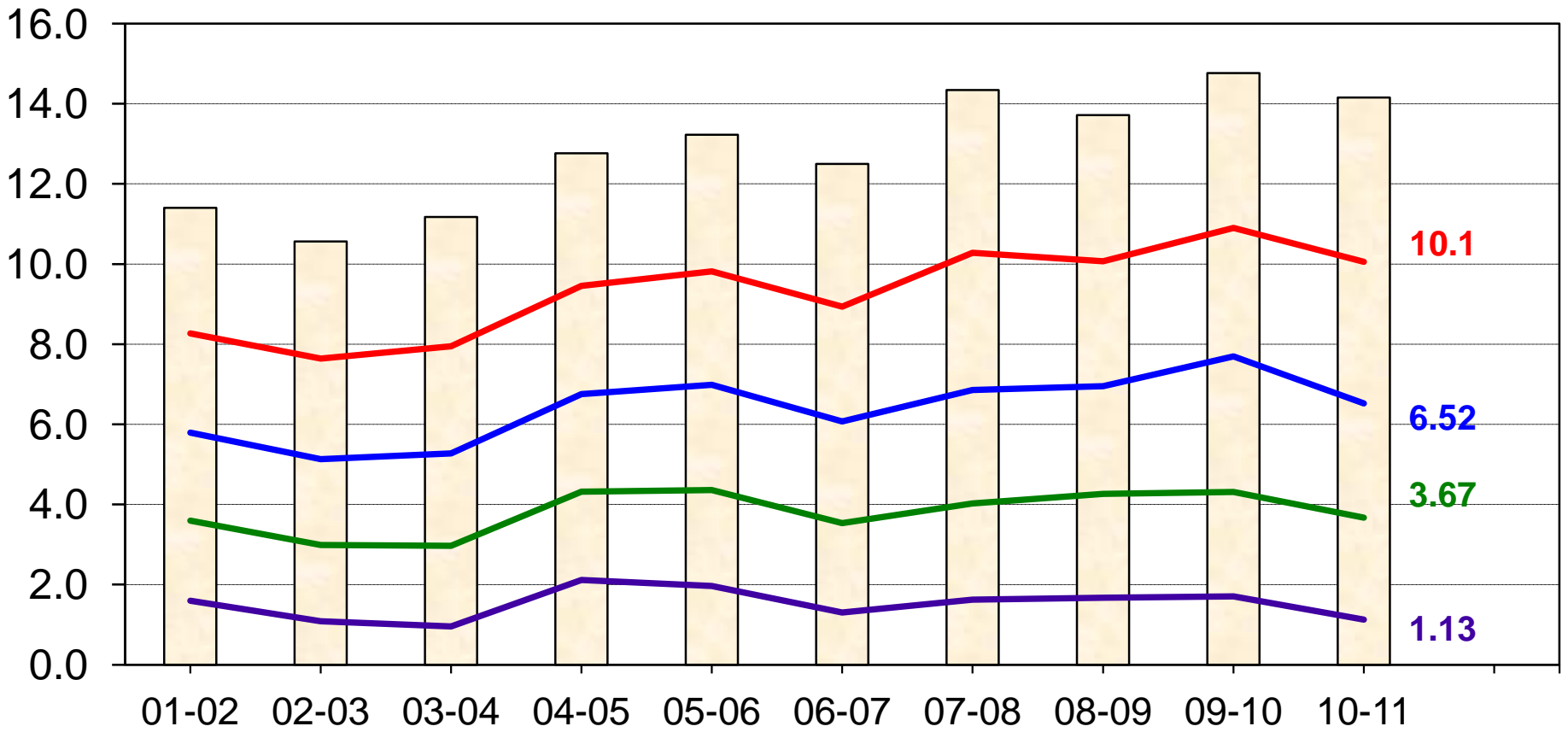




# U.S. Corn Stocks



Billion Bushels



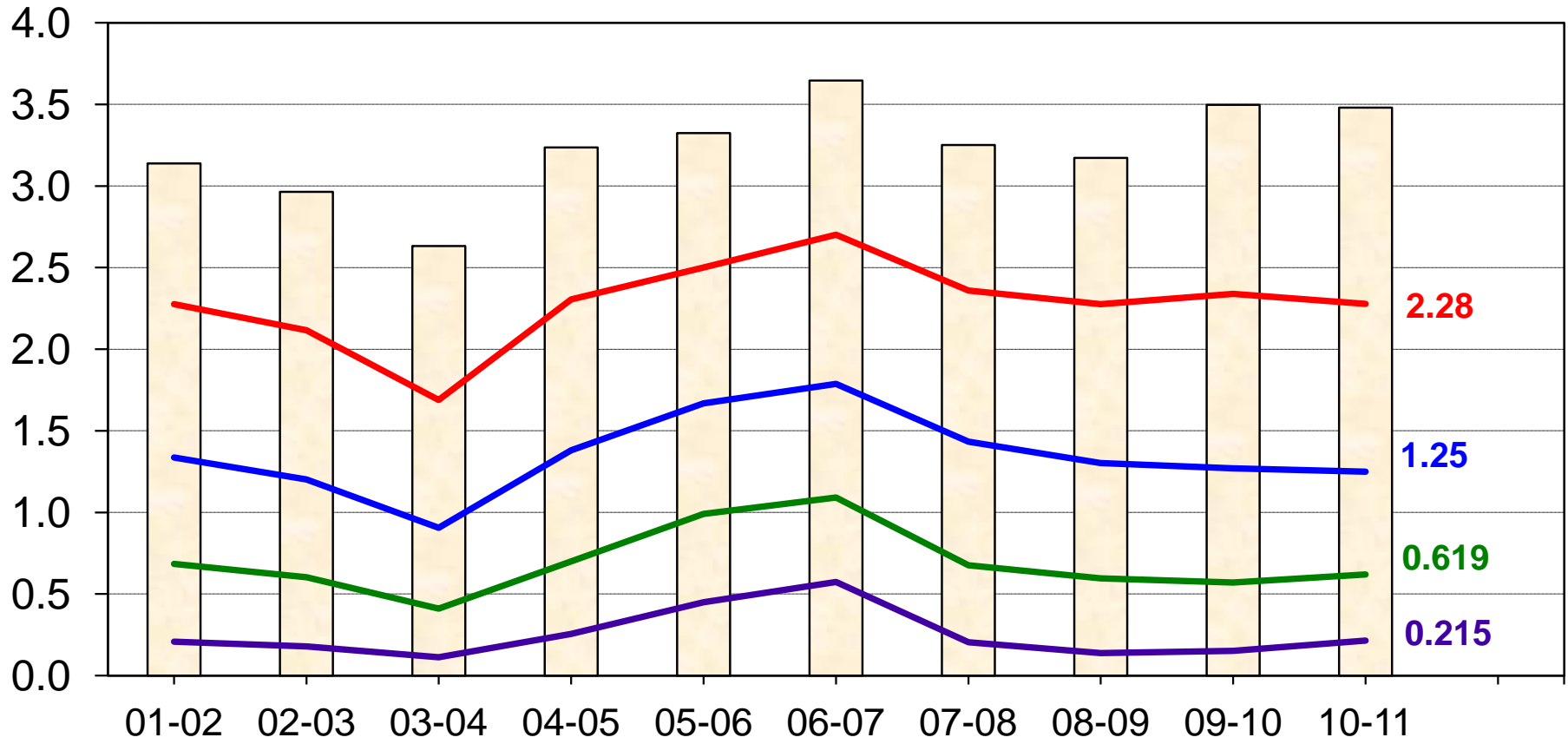
Beginning Supply    Dec    Mar    Jun    Sep



# U.S. Soybean Stocks



Billion Bushels





# 2010 Soybean Crop



	Previous Estimates	Sept 30 Estimates	Change
	--- Mil Bushels ---		Mil Bu
Sept 1, 2010, Beginning Stocks	151	151	---
2010 Production	3,329	3,329	---
Imports	15*	15*	---
<b>Total Supply</b>	<b>3,495</b>	<b>3,495</b>	<b>---</b>
Crushings	1650*	1650*	---
Exports	1495*	1495*	---
Seed	87*	87*	---
<b>Measured Disappearance</b>	<b>3,232*</b>	<b>3,232*</b>	<b>---</b>
Ending Stocks	225*	215	- 10
Residual	38*	48	+ 10

\* WAOB Forecasts in September WASDE Report



# September 1, 2011, Grain Stocks

Crop	Unit	September 2011	% Change from September 2010
Barley	Mil Bu	174	- 22.1
Oats	Mil Bu	78.4	- 33.0
Sorghum	Mil Bu	27.5	- 33.4



# September 1, 2011, Oilseed Stocks

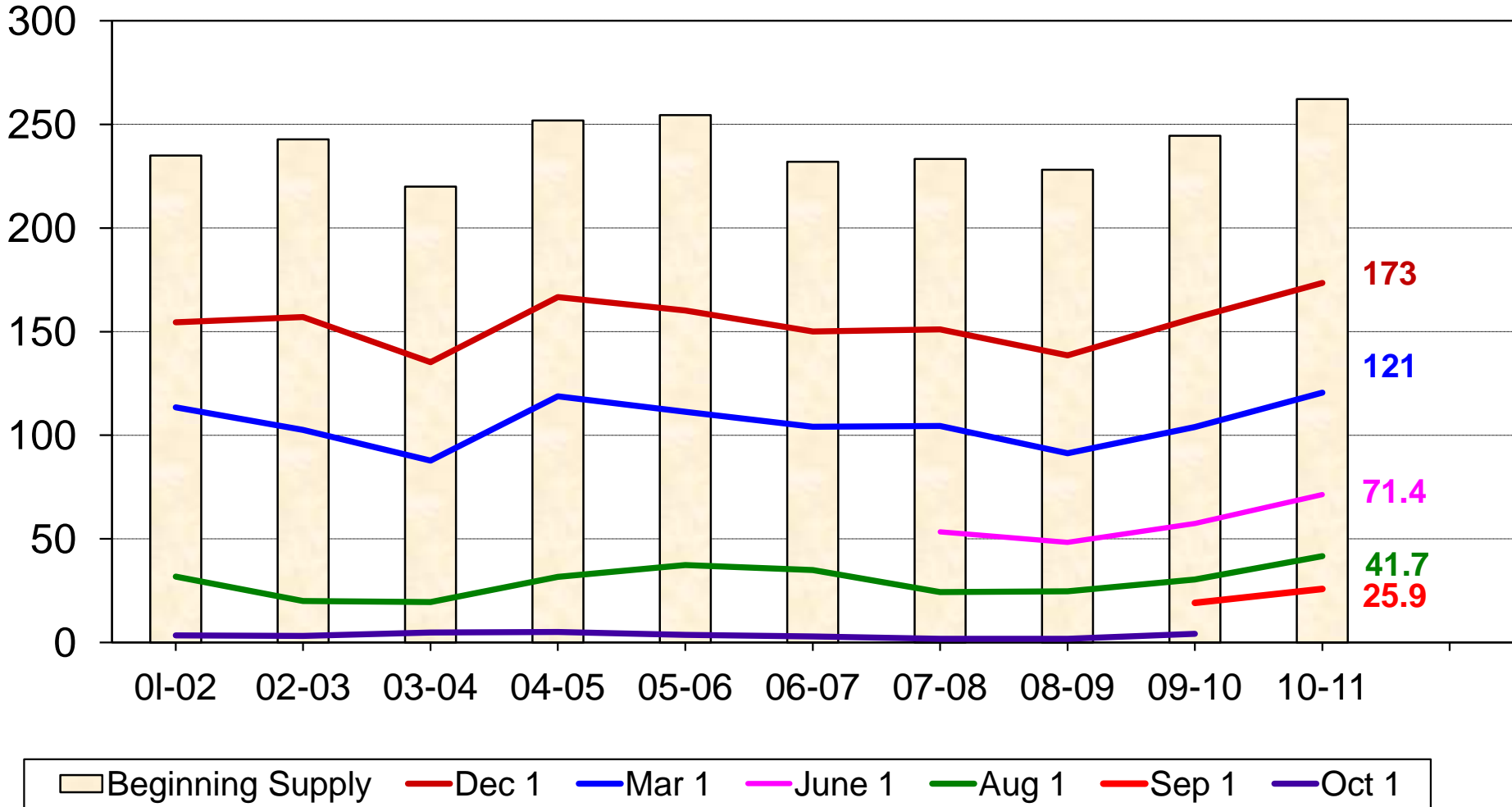
<b>Crop</b>	<b>Unit</b>	<b>September 2011</b>	<b>% Change from September 2010</b>
<b>All Sunflower</b>	<b>Mil Lbs</b>	<b>259</b>	<b>- 33.6</b>
<b>Safflower</b>	<b>Mil Lbs</b>	<b>14.3</b>	<b>- 20.8</b>
<b>Mustard Seed</b>	<b>Mil Lbs</b>	<b>3.38</b>	<b>- 20.9</b>



# U.S. Rough Rice Stocks



Million Cwt





United States Department of Agriculture  
**National Agricultural Statistics Service**

---

---

Upcoming Reports

October 4	Vegetables
October 12	Crop Production Cotton Ginnings
October 17	USDA Data User's Meeting
October 31	Agricultural Prices