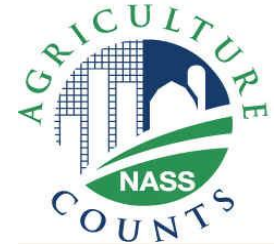




United States Department of Agriculture
National Agricultural Statistics Service



CATTLE INVENTORY

Executive Briefing



July Cattle Survey

Data Collection Period: June 30 - July 14

Sample Size 52,603

Collection Methods

Phone, mail, internet, personal interview

Main Data Items

Total inventory, beef cows, milk cows, heifers and steers over 500 pounds, calves under 500 pounds, calf crop



U.S. Cattle Inventory July 1



	2010	2011	% PY
	←	1,000 Head	→
All Cattle & Calves	101,100	100,000	99%
Cows & Heifers that have Calved	40,900	40,600	99%
Beef Cows	31,750	31,400	99%
Milk Cows	9,150	9,200	101%
All Heifers 500 lbs & over	16,200	16,000	99%
For Beef Replacements	4,400	4,200	95%
For Milk Replacements	4,050	4,200	104%
Other Heifers	7,750	7,600	98%
Steers 500 lbs & over	14,400	14,200	99%
Bulls 500 lbs & over	2,100	2,000	95%
Calves under 500 lbs	27,500	27,200	99%
Cattle on Feed	11,900	12,200	103%
Calf Crop - Annual	35,685	35,500	99%



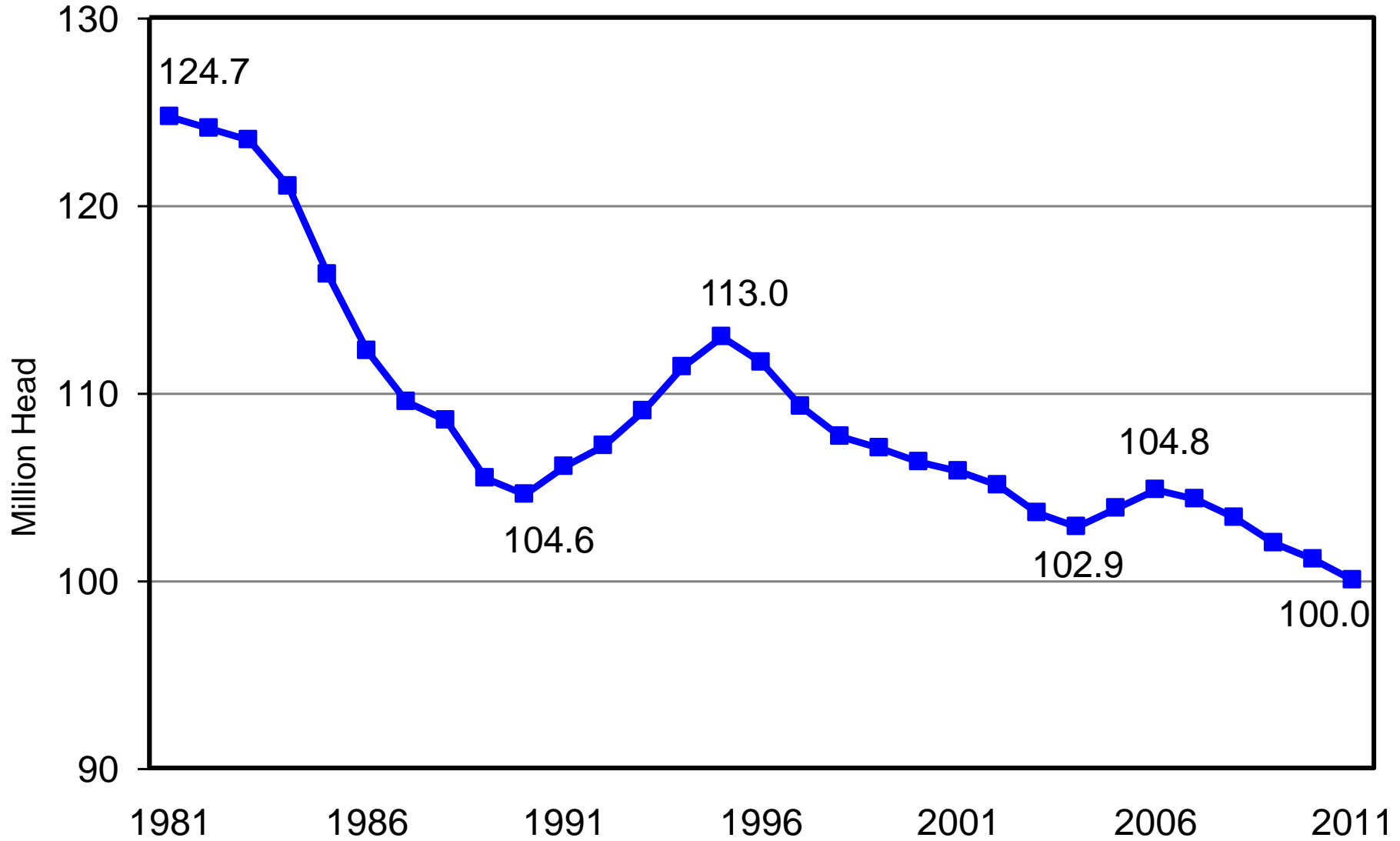
NASS Estimates and Industry Expectations

Percent of Previous Year

	USDA - NASS Estimate	Industry Average	Industry Range
Cattle Inventory			
All Cattle & Calves	98.9%	98.6%	98.1 – 99.2%
Beef Cows & Heifers that have Calved	98.9%	98.1%	97.5 – 99.0%
Calf Crop	99.5%	98.5%	97.5 – 99.3%
1000+ Cattle on Feed			
Inventory	103.8%	102.7%	101.5 – 104.1%
Placements	104.1%	93.4%	88.1 – 101.4%
Marketings	105.3%	102.8%	101.5 – 104.6%

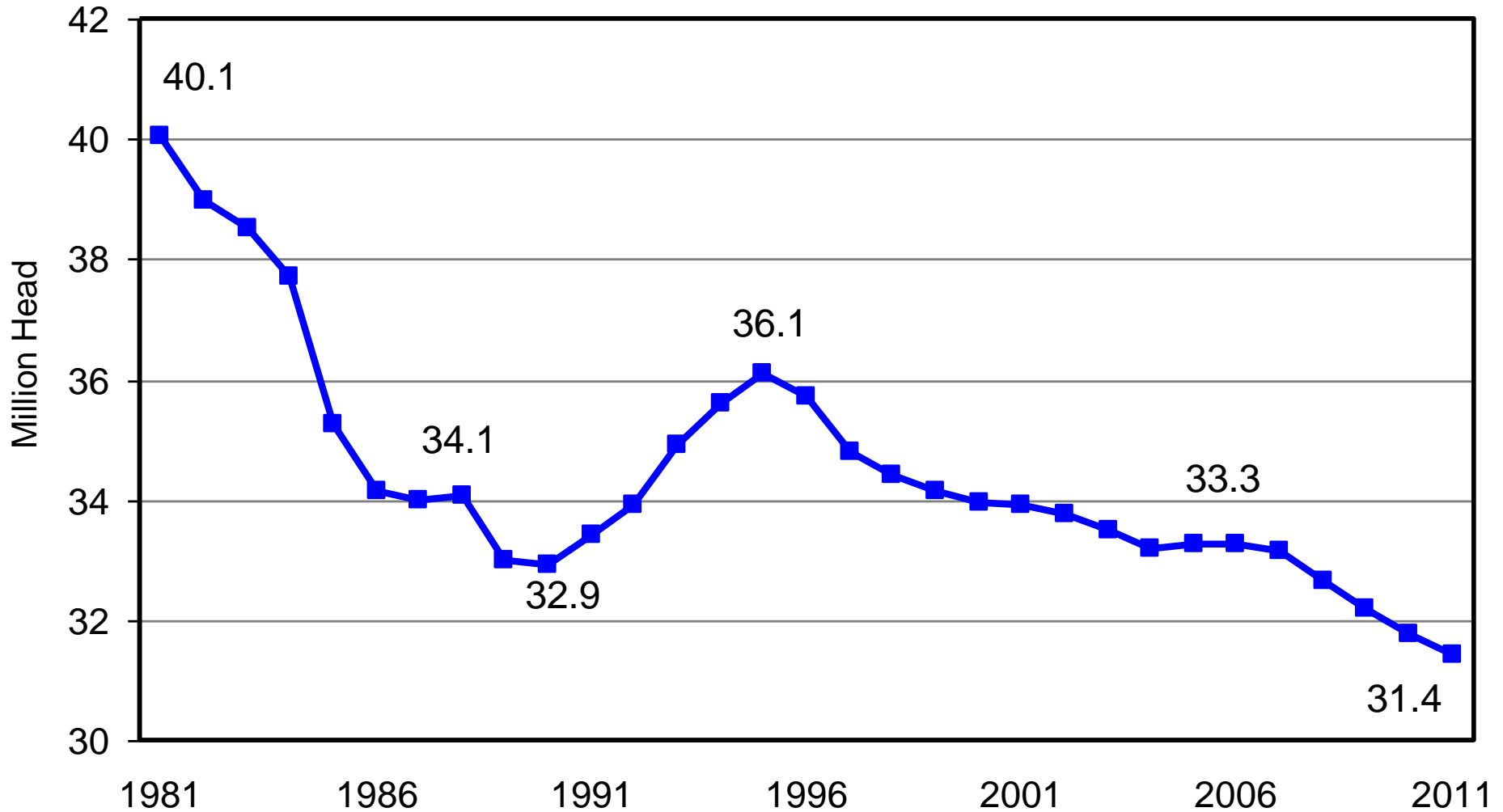
U.S. All Cattle & Calves

July 1, 1981 – 2011



U.S. Beef Cows

July 1, 1981 - 2011





U.S. Beef Cow Balance Sheet

January - June

	2010	2011
	← 1,000 Head →	
Begin Inventory Jan 1	31,371	30,865
Deaths	314	309
Commercial Slaughter	<u>1,788</u>	<u>1,738</u>
Beef Cow Supply	29,269	28,818
Ending Inventory	<u>31,750</u>	<u>31,400</u>
Indicated Replacements	2,481	2,582
Heifers 500+ Available For Replacements	5,451	5,158
Replacement %	45.5%	50.1%

Totals may not add due to rounding

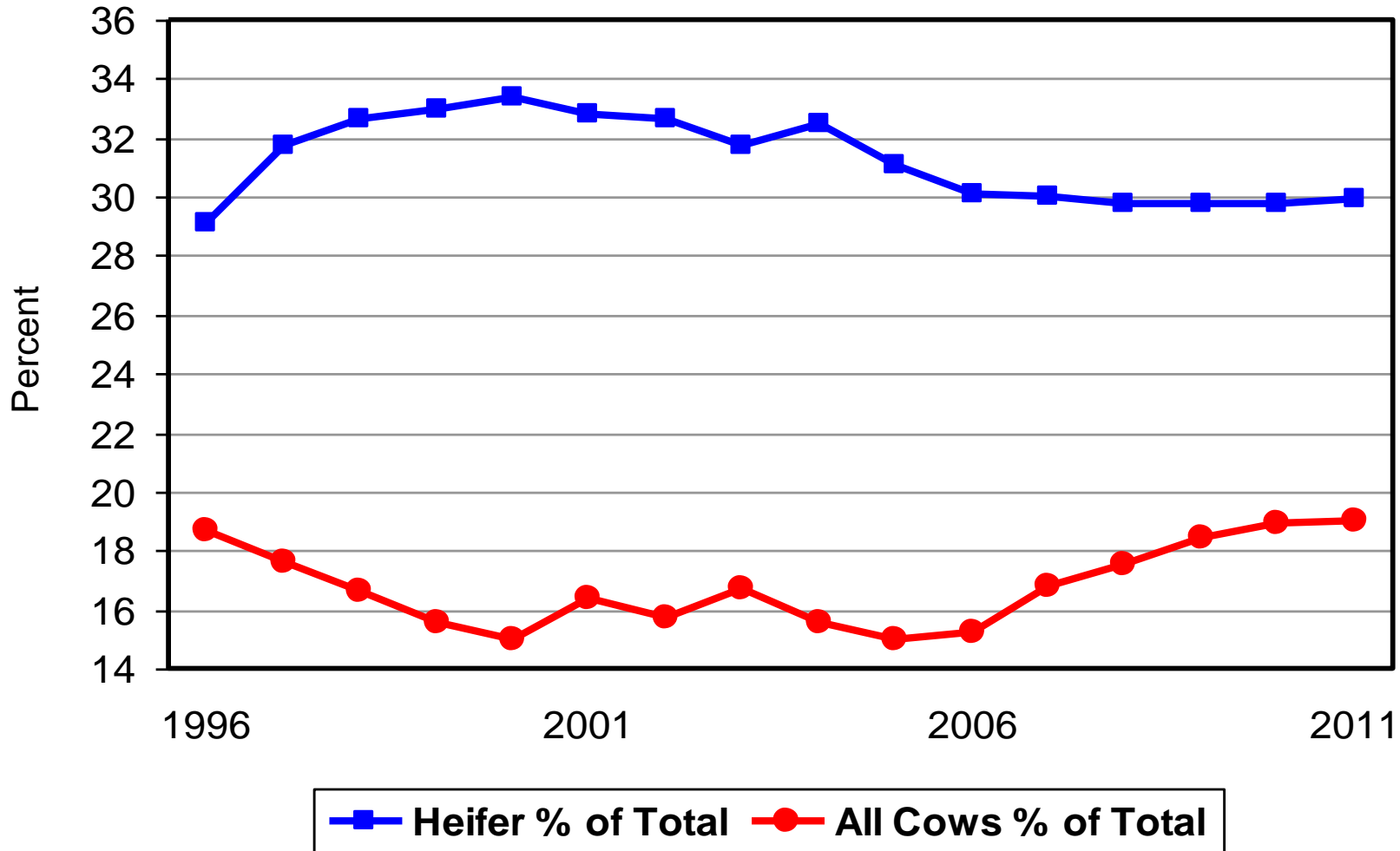
July 22, 2011



Federally Inspected Slaughter January – June 2010 - 2011

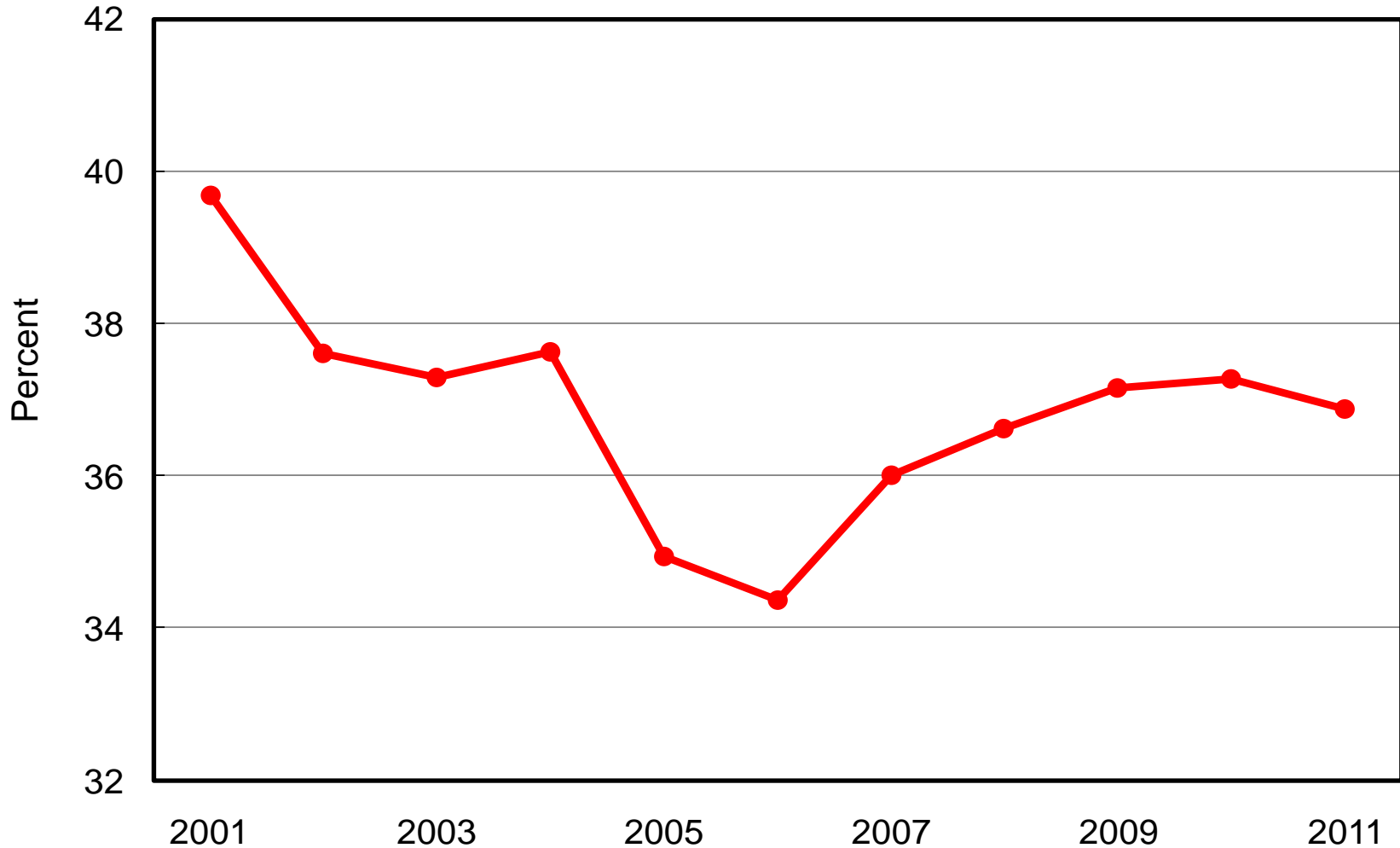
	2010 ←	2011 1,000 Head	Change →
Total Cattle Slaughter	16,572	16,694	+122
Heifer Slaughter	4,936	4,991	+55
All Cow Slaughter	3,128	3,168	+40
Dairy Cow Slaughter	1,370	1,458	+88
Beef Cow Slaughter	1,758	1,710	-48
Steer Slaughter	8,206	8,248	+42

All Cow & Heifer Slaughter as a Percent of Total Slaughter, January 1 – June 30



Heifers as a Percent of 1000+ COF Inventory

U.S. January-July Average



U.S. Cattle on Feed July 1

	2010	2011	% PY
	←	1,000 Head	→
All Cattle on Feed	11,900	12,200	103%
1,000+ Cattle on Feed	10,071	10,451	104%
< 1,000 Cattle on Feed	1,829	1,749	96%

Totals may not add due to rounding



U.S. Feeder Cattle Supply Outside Feedlots July 1

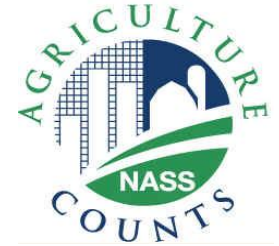
	2010	2011	% PY
	←	1,000 Head	→
Calves < 500 lbs	27,500	27,200	99%
Steers > 500 lbs	14,400	14,200	99%
Other Heifers > 500 lbs	7,750	7,600	98%
<hr/>			
Total Supply	49,650	49,000	99%
Cattle on Feed	11,900	12,200	103%
Feeder Cattle Supply Outside Feedlots	37,750	36,800	97%

Totals may not add due to rounding

July 22, 2011



United States Department of Agriculture
National Agricultural Statistics Service



Upcoming Reports

July 29	Agricultural Prices
August 11	Crop Production
August 18	Milk Production
August 19	Cattle on Feed