



United States Department of Agriculture  
**National Agricultural Statistics Service**

---

---

**October Crop Production**  
Executive Summary

Lance Honig, Chief  
Crops Branch



# Contents

Field Crops	Fruit & Nuts	Specialty Crops
Corn	Citrus	Dry Beans
Soybeans	Pecans	Tobacco
Cotton		Sugarbeets
Rice		Sugarcane
Peanuts		
Sorghum		
Alfalfa Hay		
Other Hay		
Canola		
Sunflowers		



# Survey Overview

## Florida Citrus

	<b>Tree Inventory</b>	<b>Limb Count</b>	<b>Objective Surveys (Size and Drop)</b>	<b>Fruit Maturity</b>
Survey Type	Field Observations	Field Observations	Field Observations	Laboratory Tests
Crops Included	All	All	All	Oranges, Grapefruit
Sample Size	256,000 Acres	3,337 Samples	1,801 Samples	425 Samples
Collection Period	July 1, 2015 – June 30, 2016	July 8 – September 23	September 6 - 27	September 28 - 30



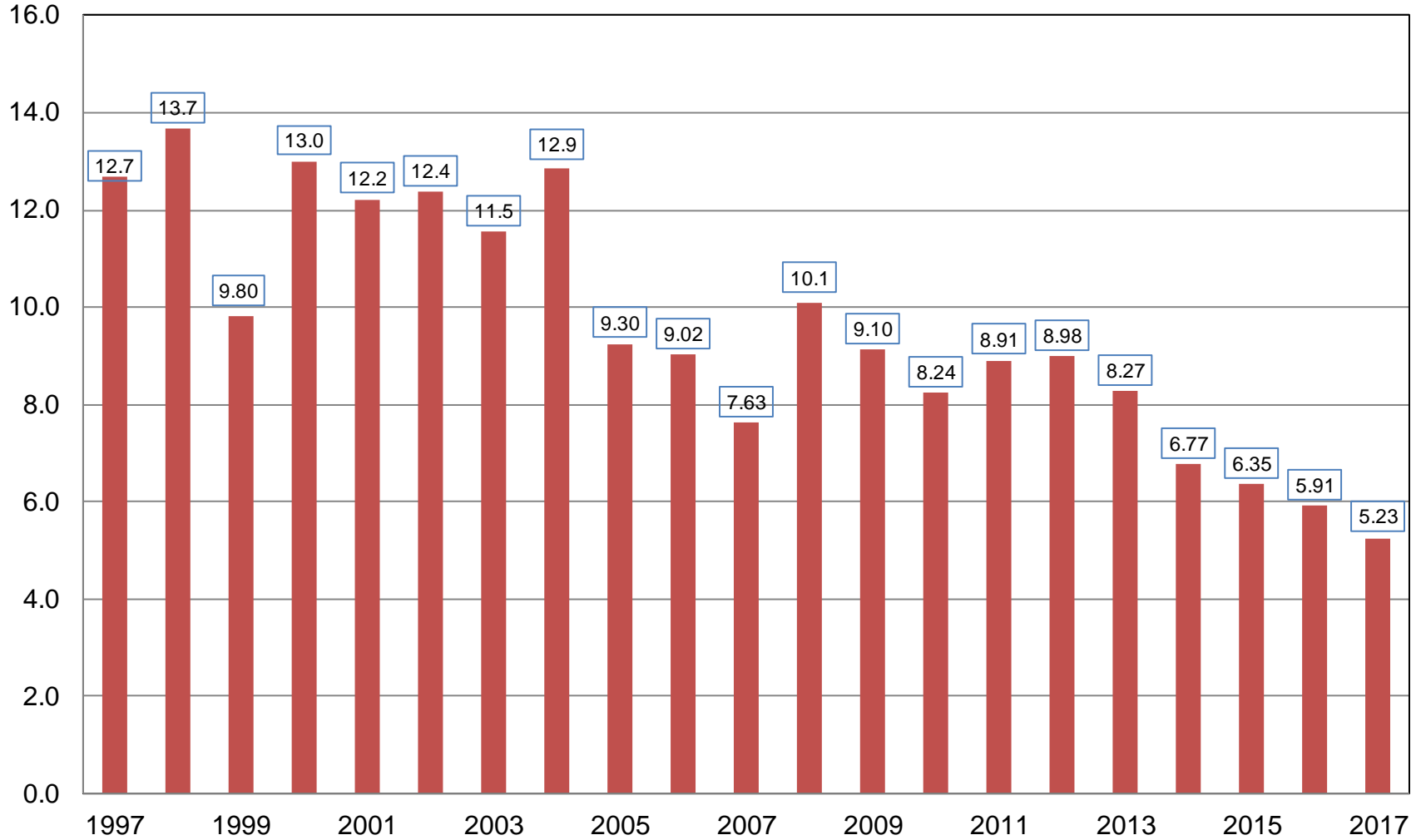
# October 2016 Crop Production

Crop	Unit	October 2016	% Change From Previous Forecast	% Change From Previous Season
Production				
Oranges	Mil Tons	5.23	NA	-11.6
Grapefruit	Thou Tons	756	NA	-5.9
Lemons	Thou Tons	912	NA	+2.5
Tangerines & Mandarins	Thou Tons	997	NA	+6.6



# Orange Production United States

Million Tons





# Survey Overview

	<b>Ag Yield</b>	<b>Objective Yield</b>
Survey Type	Farmer Reported	Field Measurement
Crops Included	Field Crops	Corn, Cotton, Soybeans
Sample Size	11,622	4,952
Collection Period	Sept 29 – Oct 5	Sept 24 – Oct 1



# October 2016 Crop Production

Crop	Unit	October 2016	% Change From Previous Estimate	% Change From Previous Season
Planted Area				
Corn	Mil Ac	94.5	+0.4	+7.4
Soybeans	Mil Ac	83.7	+<0.1	+1.3
Sorghum	Mil Ac	6.76	-6.4	-20.1
Sunflowers	Mil Ac	1.60	-3.0	-14.1
Canola	Mil Ac	1.71	+0.6	-3.5
Dry Edible Beans	Mil Ac	1.66	-3.5	-6.1



# October 2016 Crop Production

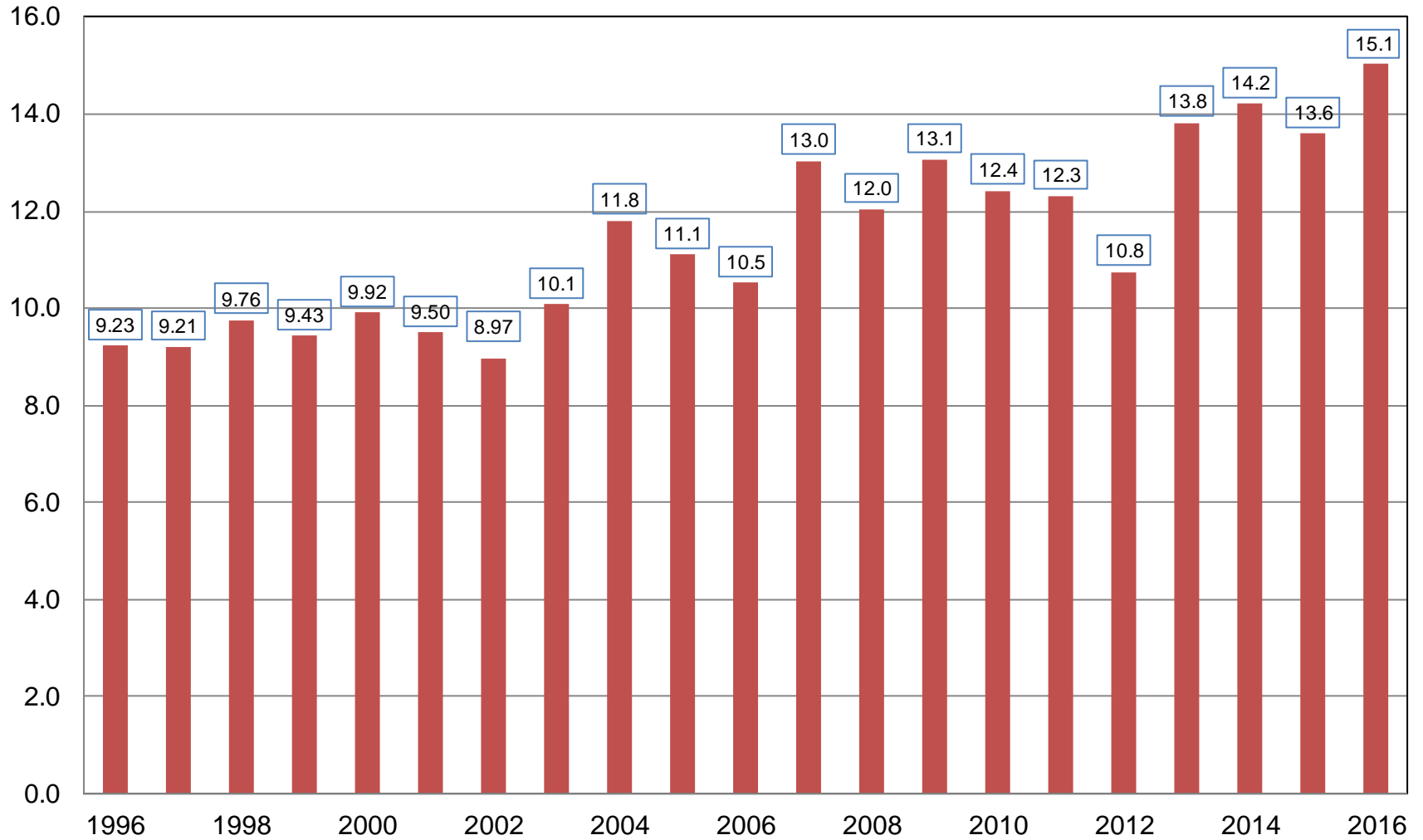
Crop	Unit	October 2016	% Change From Previous Forecast	% Change From Previous Season
Corn				
Harvested	Mil Ac	86.8	+0.3	+7.5
Yield	Bu/Ac	173.4	-0.6	+3.0
Production	Bil Bu	15.1	-0.2	+10.7





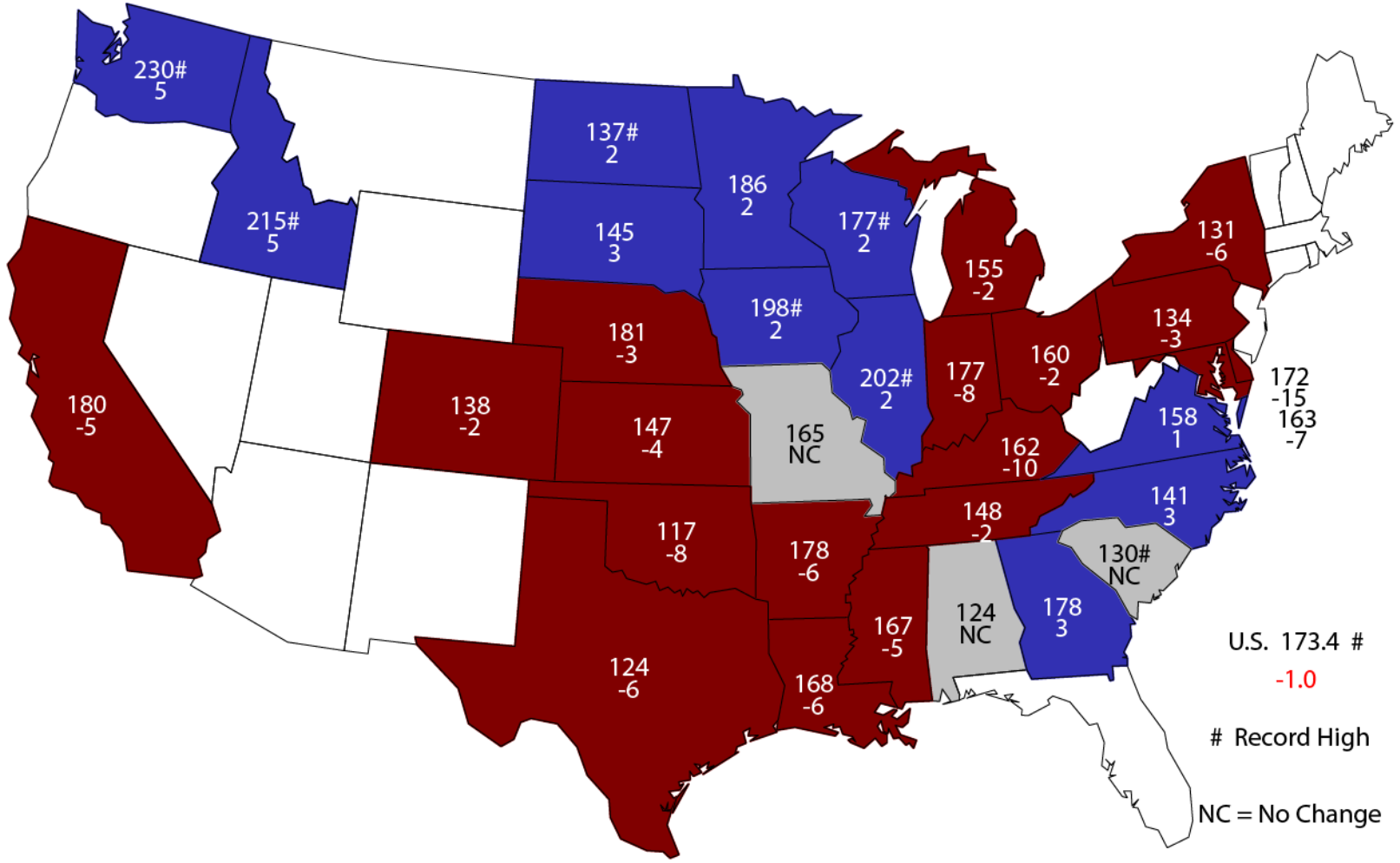
# Corn for Grain Production United States

Billion Bushels



# October 1, 2016 Corn Yield

## Bushels and Change From Previous Month

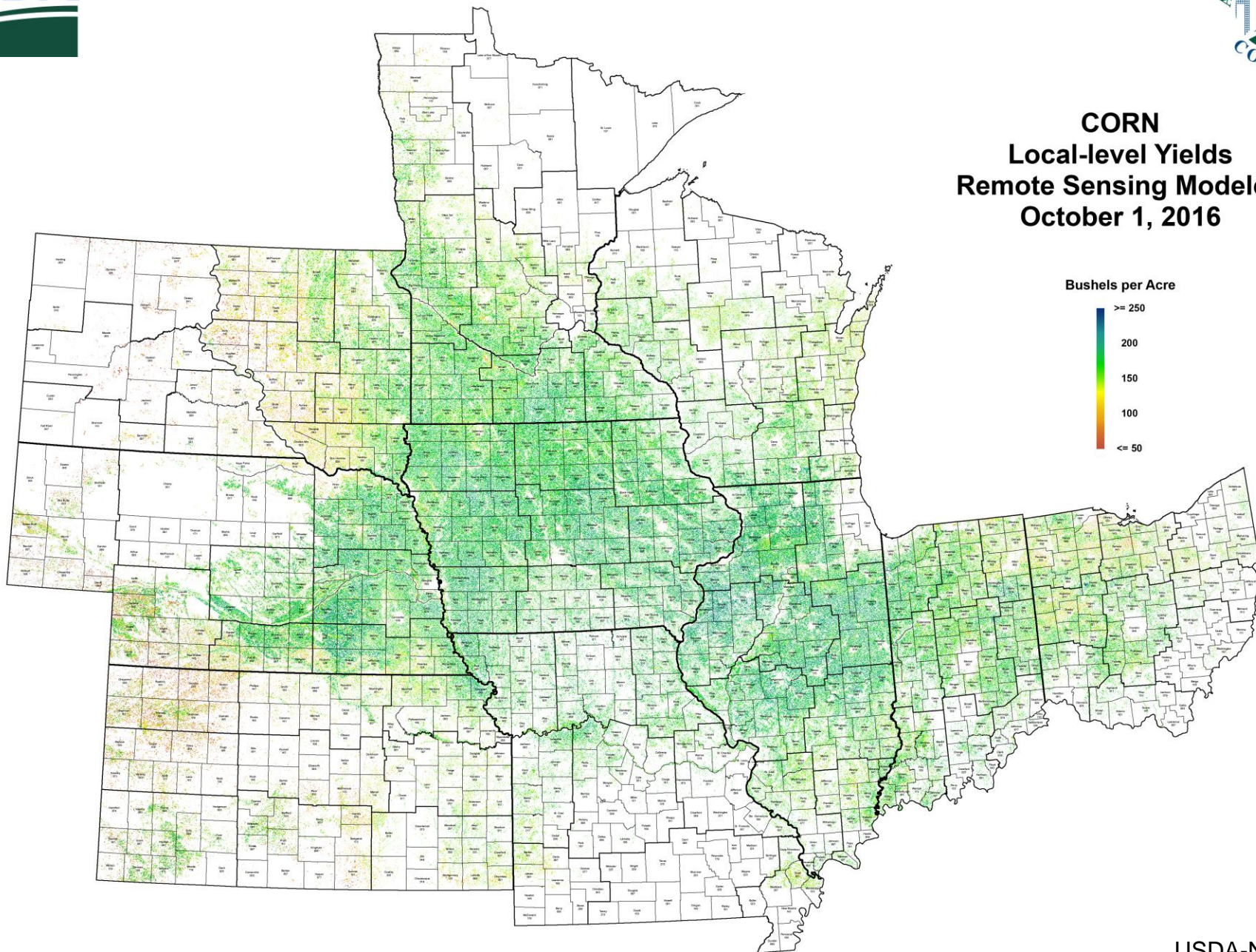


U.S. 173.4 #  
-1.0

# Record High

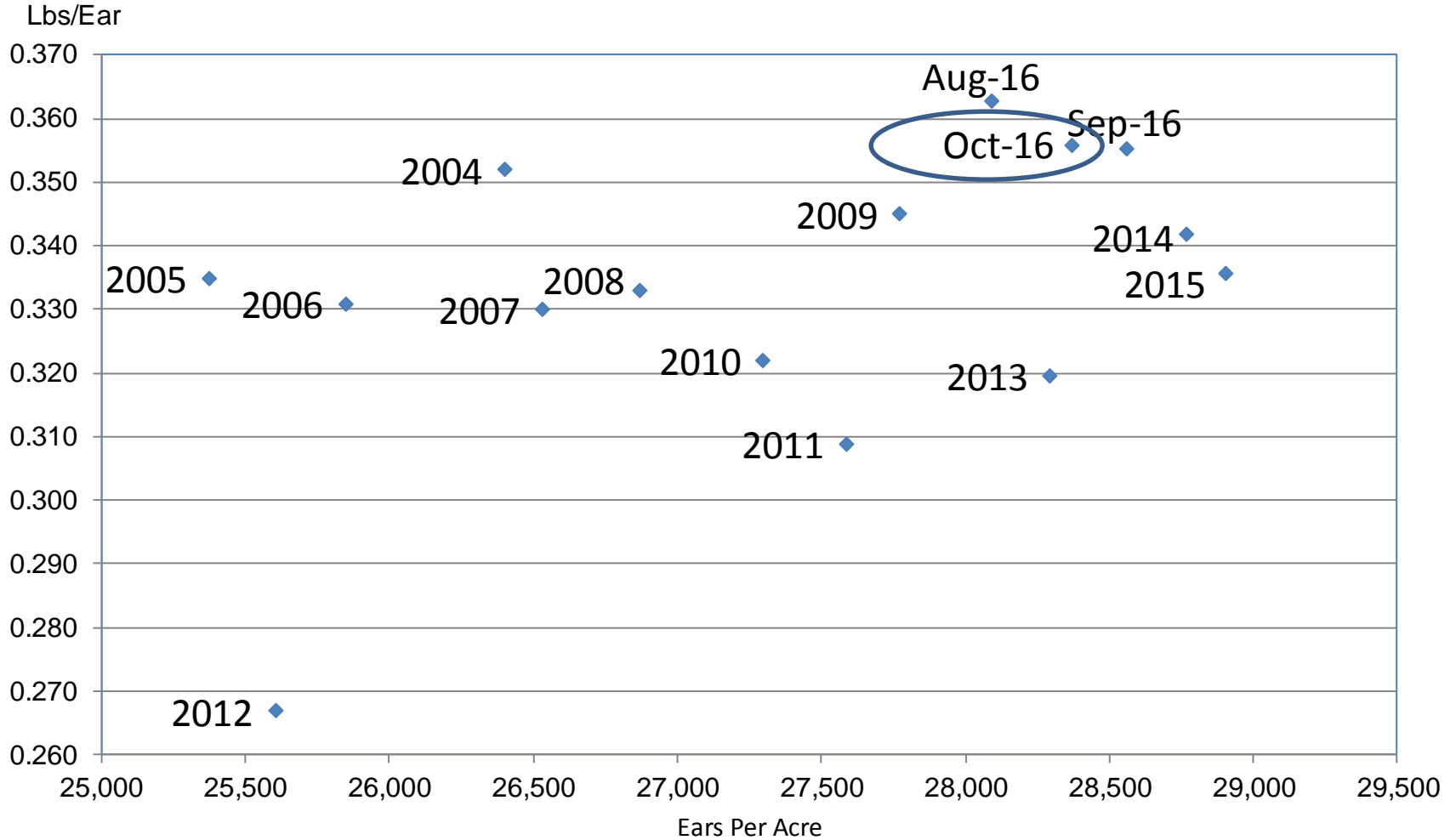
NC = No Change

# CORN Local-level Yields Remote Sensing Modeled October 1, 2016



# Corn Objective Yield Region

## Ears Per Acre vs. Implied Ear Weight



Implied Ear Weight = (Published Yield \* 56) / Ears



# Corn Objective Yield - October

## Percent of Samples Processed in the Lab

Year	Dent Stage	Mature
	<i>Percent</i>	
2012	3	90
2013	NA	NA
2014	39	53
2015	16	70
2016	17	73



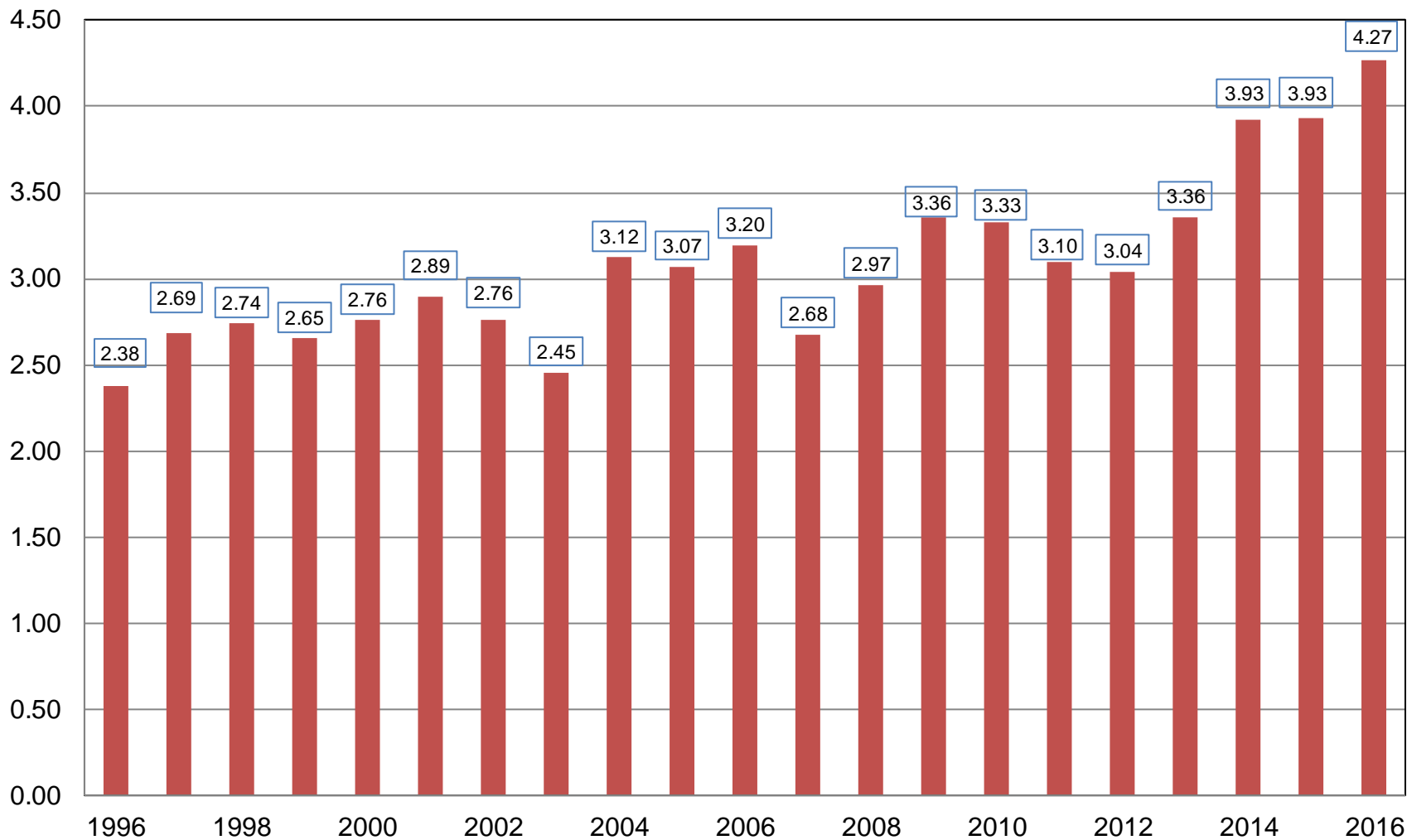
# October 2016 Crop Production

Crop	Unit	October 2016	% Change From Previous Forecast	% Change From Previous Season
Soybeans				
Harvested	Mil Ac	83.0	+<0.1	+1.6
Yield	Bu/Ac	51.4	+1.6	+7.1
Production	Bil Bu	4.27	+1.6	+8.7



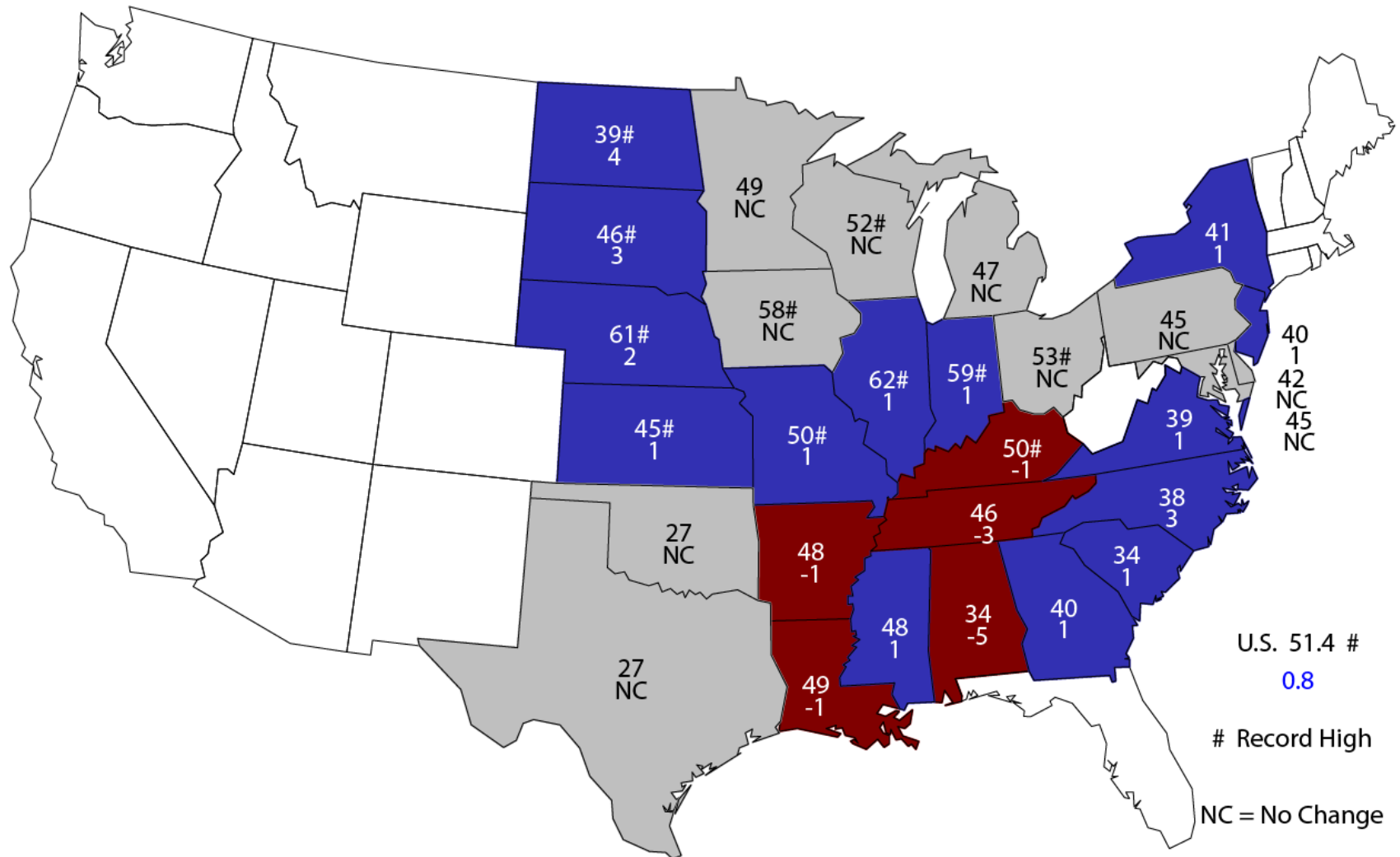
# Soybean Production United States

Billion Bushels



# October 1, 2016 Soybean Yield

## Bushels and Change From Previous Month



U.S. 51.4 #  
0.8

# Record High

NC = No Change

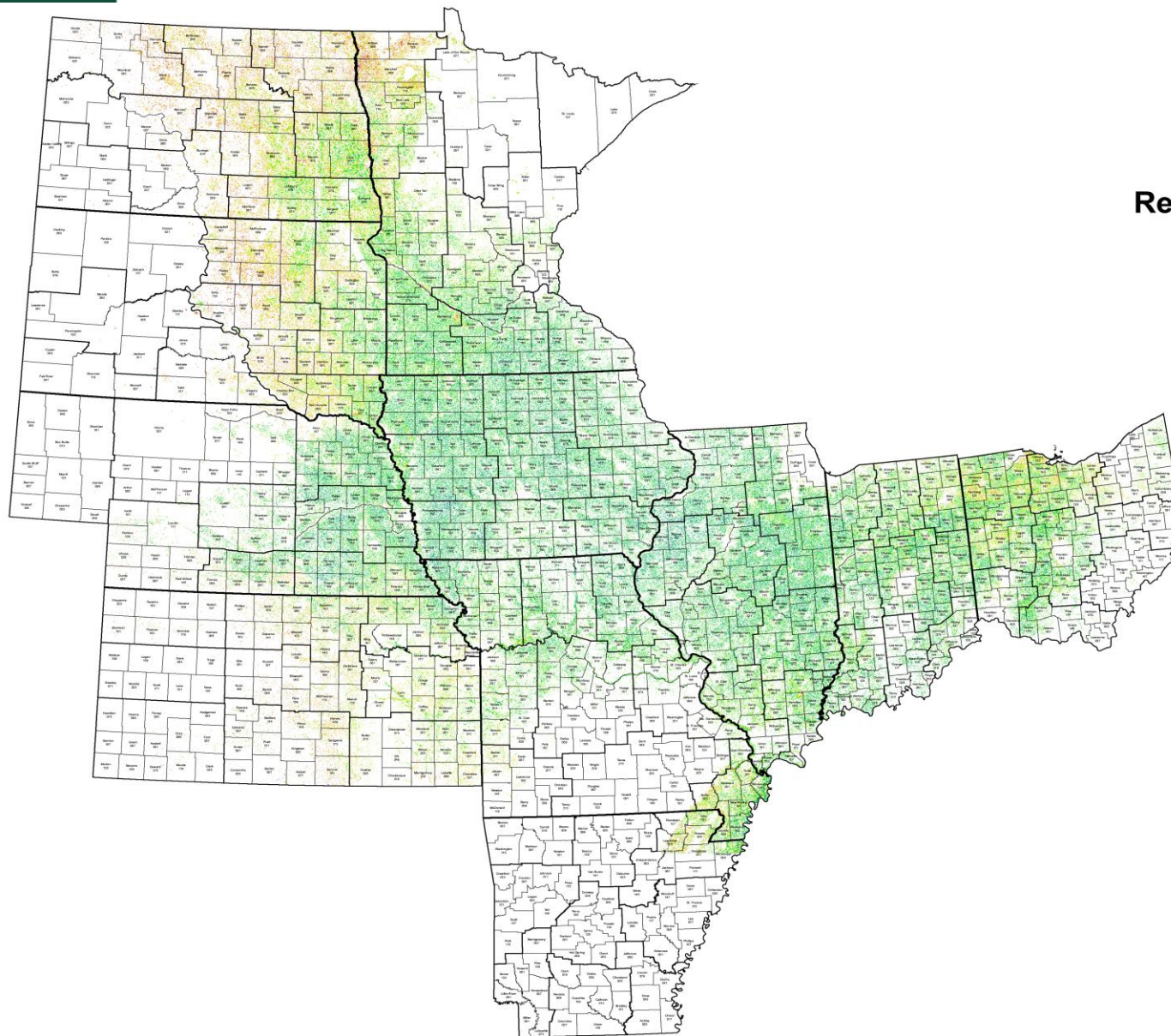


# SOYBEANS

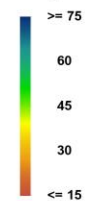
## Local-level Yields

### Remote Sensing Modeled

#### October 1, 2016



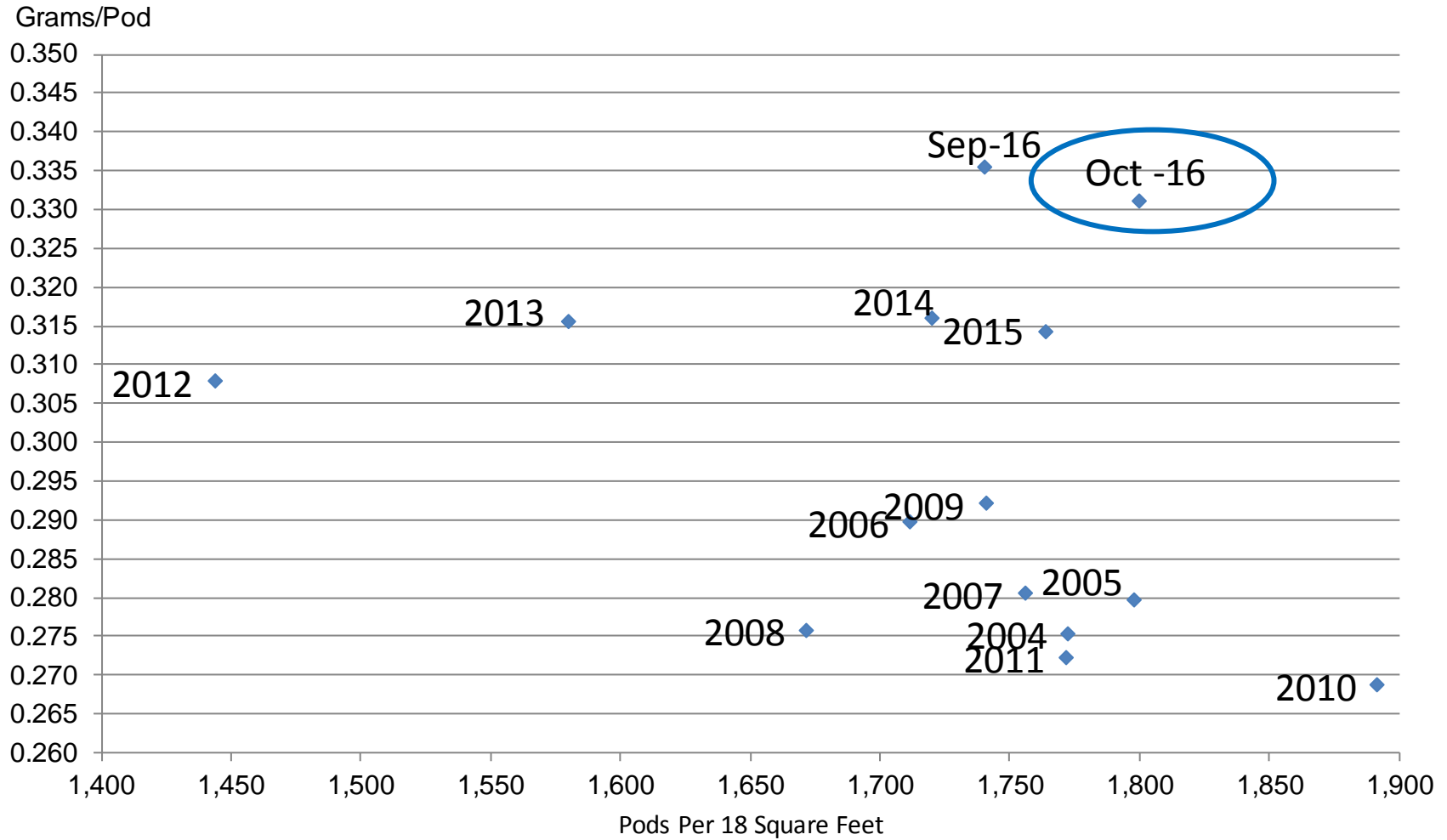
Bushels per Acre





# Soybean Objective Yield Region

## Pods Per 18 Square Feet vs. Implied Pod Weight



Implied Pod Weight = (Published Yield / Pods) / 0.0889



# Soybean Objective Yield - October

## Percent of Samples Processed in the Lab

Year	Mature
	<i>Percent</i>
2012	64
2013	NA
2014	35
2015	54
2016	53



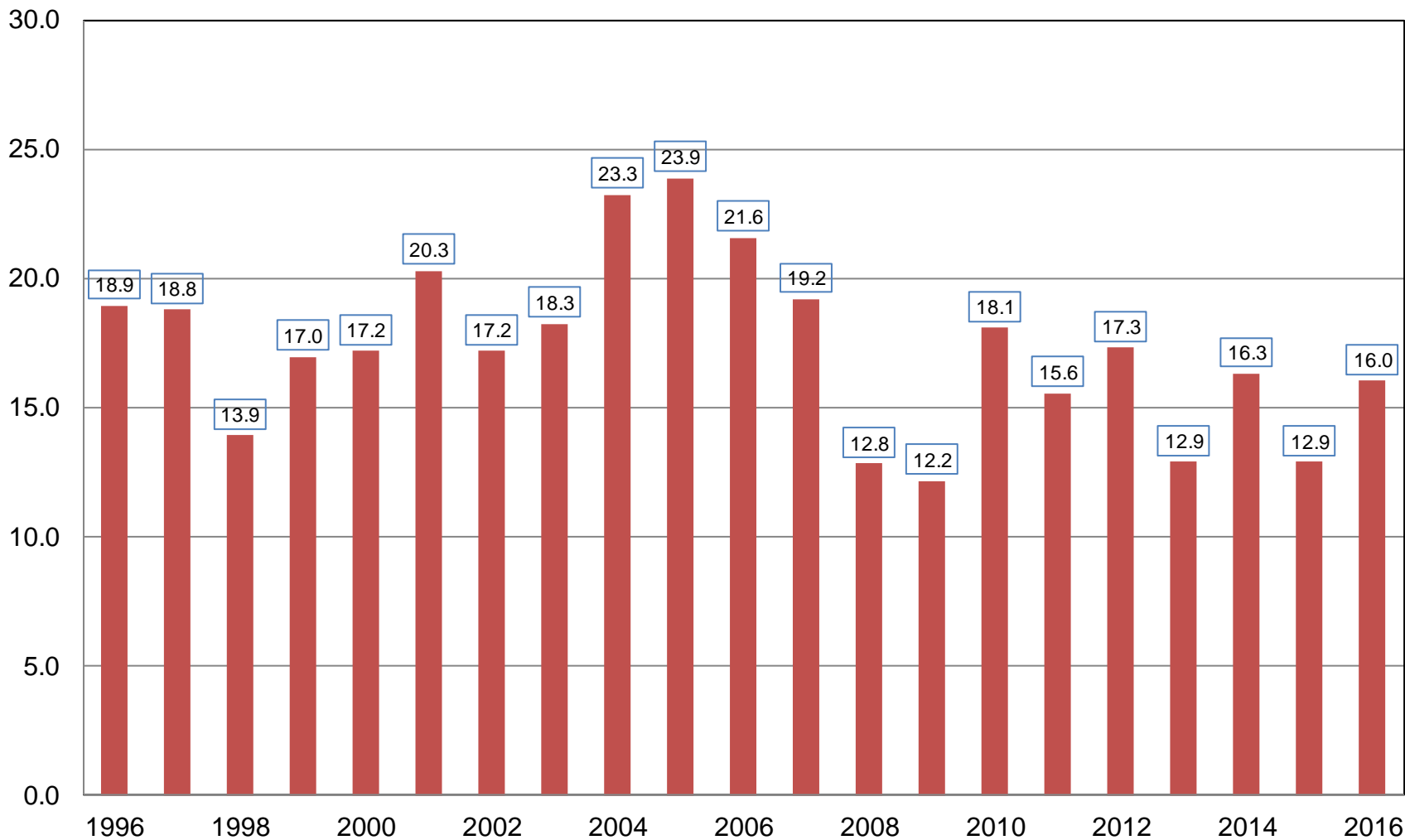
# October 2016 Crop Production

Crop	Unit	October 2016	% Change From Previous Forecast	% Change From Previous Season
All Cotton				
Harvested	Mil Ac	9.66	NC	+19.6
Yield	Lb/Ac	797	-0.6	+4.0
Production	Mil Bls	16.0	-0.7	+24.4
Cottonseed				
Production	Mil Tons	5.11	-0.7	+26.4



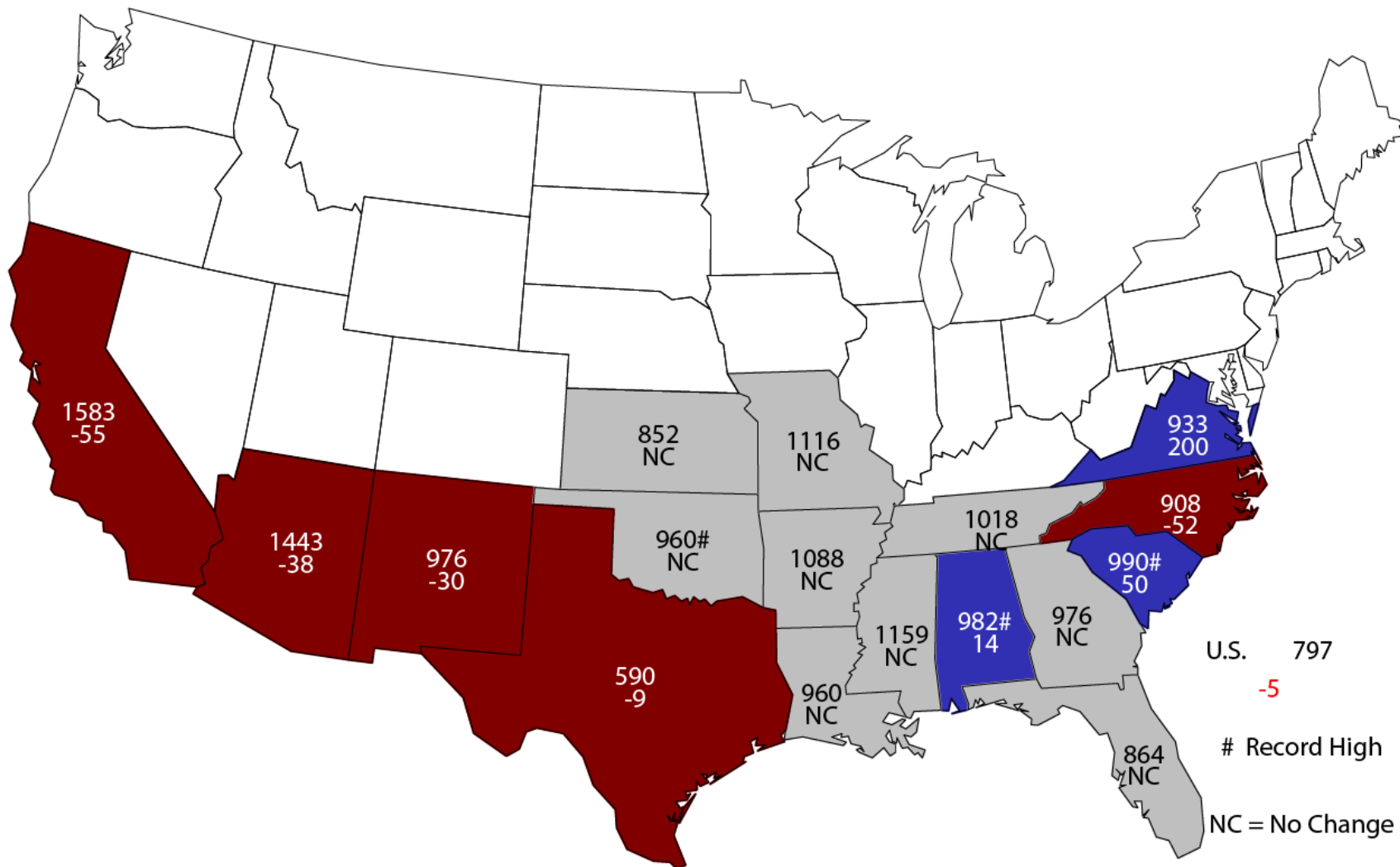
# All Cotton Production United States

Million Bales



# October 1, 2016 All Cotton Yield

## Pounds and Change From Previous Month





# October 2016 Crop Production

Crop	Unit	October 2016	% Change From Previous Forecast	% Change From Previous Season
Rice				
Harvested	Mil Ac	3.13	NC	+21.7
Yield	Lbs/Ac	7,532	-0.5	+0.8
Production	Mil Cwt	236	-0.5	+22.7



# October 2016 Crop Production

Crop	Unit	October 2016	% Change From Previous Forecast	% Change From Previous Season
Peanuts				
Harvested	Mil Ac	1.59	NC	+1.7
Yield	Lbs/Ac	3,976	-1.7	+3.4
Production	Bil Lbs	6.31	-1.7	+5.1





# October 2016 Crop Production

Crop	Unit	October 2016	% Change From Previous Forecast	% Change From Previous Season
Sorghum				
Harvested	Mil Ac	6.05	-6.4	-23.0
Yield	Bu/Ac	77.2	+2.0	+1.6
Production	Mil Bu	467	-4.5	-21.8



# October 2016 Crop Production

Crop	Unit	October 2016	% Change From Previous Forecast	% Change From Previous Season
Alfalfa Hay				
Harvested	Mil Ac	18.1	NC	+1.6
Yield	Tons/Ac	3.48	+2.4	+4.8
Production	Mil Tons	62.8	+2.1	+6.5



# October 2016 Crop Production

Crop	Unit	October 2016	% Change From Previous Forecast	% Change From Previous Season
All Other Hay				
Harvested	Mil Ac	38.1	NC	+3.8
Yield	Tons/Ac	2.07	NC	+0.5
Production	Mil Tons	78.8	-0.3	+4.4



# October 2016 Crop Production

Crop	Unit	October 2016	% Change From Previous Forecast	% Change From Previous Season
Production				
Sugarcane	Mil Tons	33.8	-0.8	+4.6
Sugarbeets	Mil Tons	36.3	+1.3	+2.6
All Tobacco	Mil Lbs	664	-3.3	-7.2



# October 2016 Crop Production

Crop	Unit	October 2016	% Change From Previous Forecast	% Change From Previous Season
Production				
Canola	Bil Lbs	2.99	NA	+3.9
Sunflowers	Bil Lbs	2.46	NA	-15.9



# October 2016 Crop Production

Crop	Unit	October 2016	% Change From Previous Forecast	% Change From Previous Season
Production				
Dry Edible Beans	Mil Cwt	27.8	-5.9	-7.8
Pecans	Mil Lbs	263	NA	+3.3



# Upcoming Events

Release Date	Title
October 18	Data Users Meeting
October 21	Cattle on Feed
October 24	Cotton Ginnings
October 28	Rice Stocks
October 31	Agricultural Prices
November 1	CAIR: Cotton CAIR: Fats & Oils CAIR: Flour Milling CAIR: Grain Crushings
November 8-9	Advisory Committee on Agriculture Statistics
November 9	Crop Production



United States Department of Agriculture  
**National Agricultural Statistics Service**

---

---

**All Reports Available At**  
[www.nass.usda.gov](http://www.nass.usda.gov)

**For Questions**  
202-720-2127  
800-727-9540  
[nass@nass.usda.gov](mailto:nass@nass.usda.gov)