



United States Department of Agriculture
National Agricultural Statistics Service

**Crop Production - Annual
Grain Stocks
Rice Stocks
Cotton Ginnings
Winter Wheat and Canola Seedings
January Crop Production
Executive Summary**

Lance Honig, Chief
Crops Branch



Contents

Field Crops	Stocks	Fruit & Nuts	Specialty Crops
Corn	Corn	Citrus	Potatoes
Soybeans	Soybeans		Sweet Potatoes
All Cotton	Sorghum		Peppermint Oil
Sorghum	Rice		Spearmint Oil
Rice	Hay		Hops
Hay & Forage	All Wheat		
Peanuts	Barley		
Proso Millet	Oats		
Minor Oilseeds			
Sugarcane			
Sugarbeets			
Tobacco			
Pulse Crops			
Winter Wheat			

Survey Overview

	December Ag Survey	Off-Farm Grain Stocks
Survey Type	Farmer Reported	Off-Farm Grain Stock Facilities
Collection Method	Mail, Phone, Internet, Personal Interview	Mail, Phone, Internet, Personal Interview
Crops Included	Field Crops	Corn, Soybeans, All Wheat, Durum Wheat, Barley, Oats, Sorghum, Pulse Crops
States	All except HI	All except AK, HI, and NV
Sample Size	82,887	8,527
Collection Period	Nov 29 – Dec 21	Nov 29 – Dec 20



Principal Crops Planted Acreage

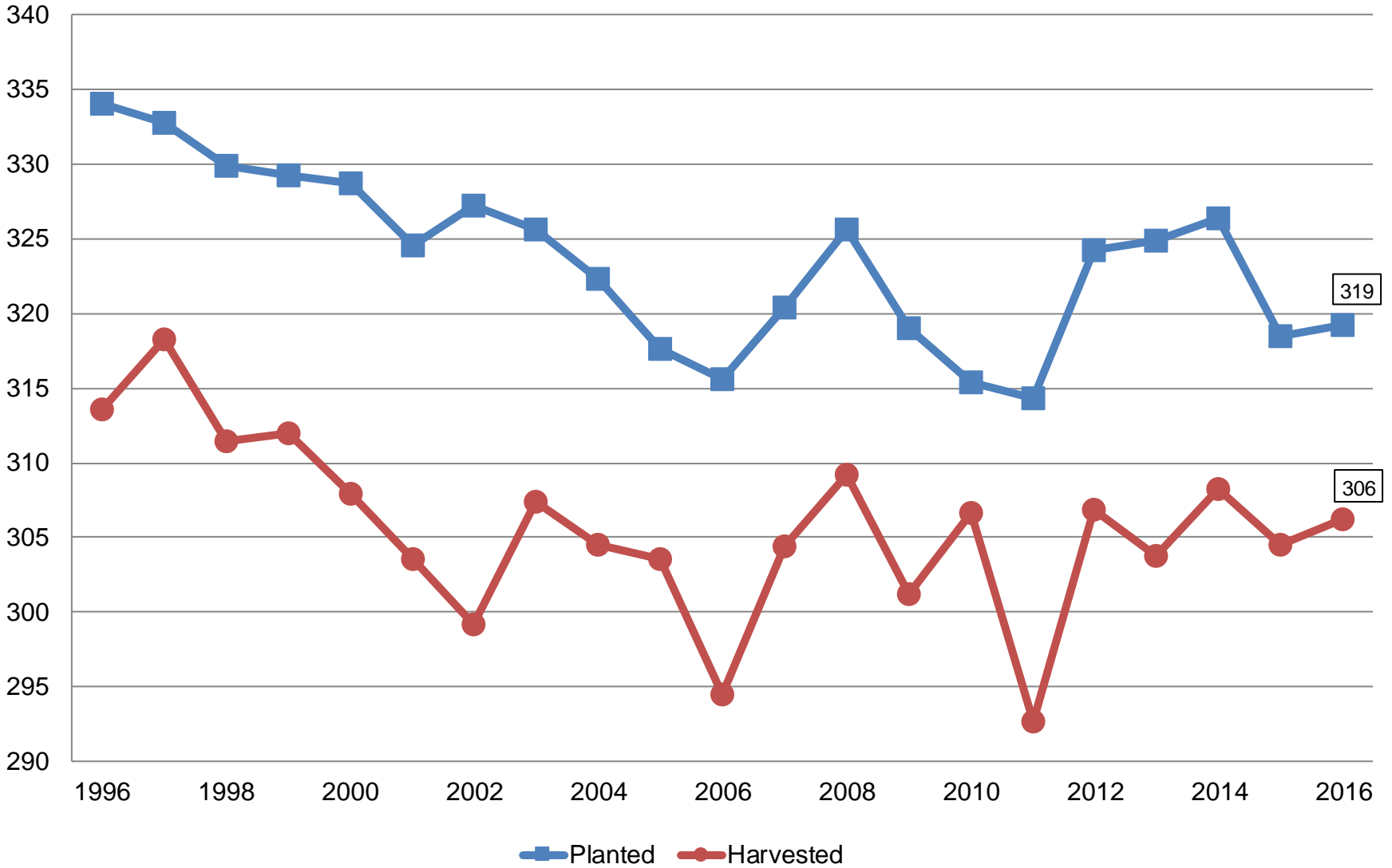
United States

Year	Principal Crops	Change From Previous Year
	<i>Million Acres</i>	
2007	320.4	+4.7
2008	325.6	+5.2
2009	319.0	-6.6
2010	315.4	-3.6
2011	314.3	-1.1
2012	324.3	+10.0
2013	324.9	+0.6
2014	326.4	+1.5
2015	319.0	-7.4
2016	319.3	+0.3



Principal Crops United States

Million Acres





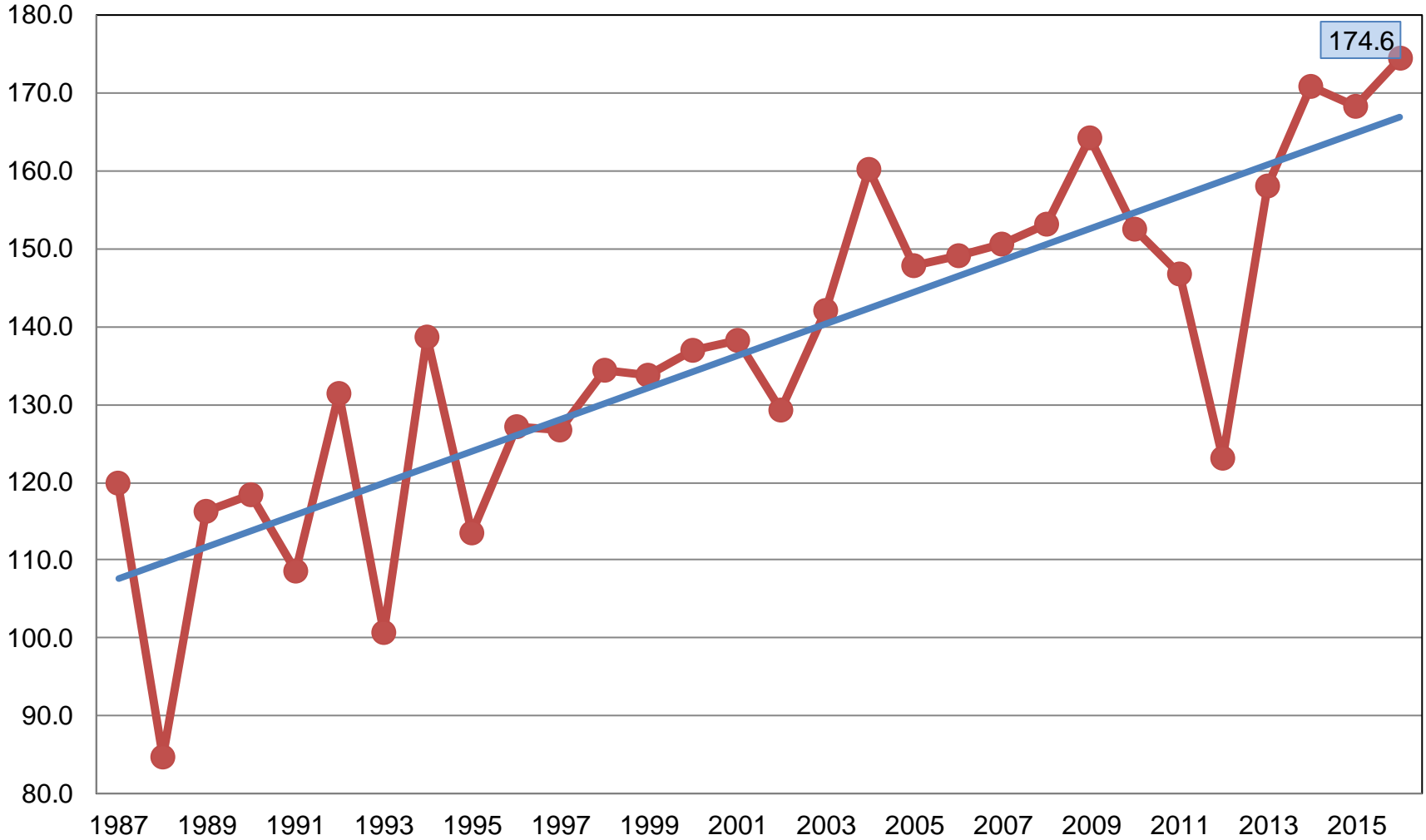
2016 Crop Production – Annual

Crop	Unit	January 2017	% Change From Previous Forecast	% Change From Previous Season
Corn				
Planted	Mil Ac	94.0	-0.5	+6.8
Harvested	Mil Ac	86.7	-0.1	+7.4
Yield	Bu/Ac	174.6	-0.4	+3.7
Production	Bil Bu	15.1	-0.5	+11.4
Stocks	Bil Bu	12.4	NA	+10.2



Corn for Grain Yield United States

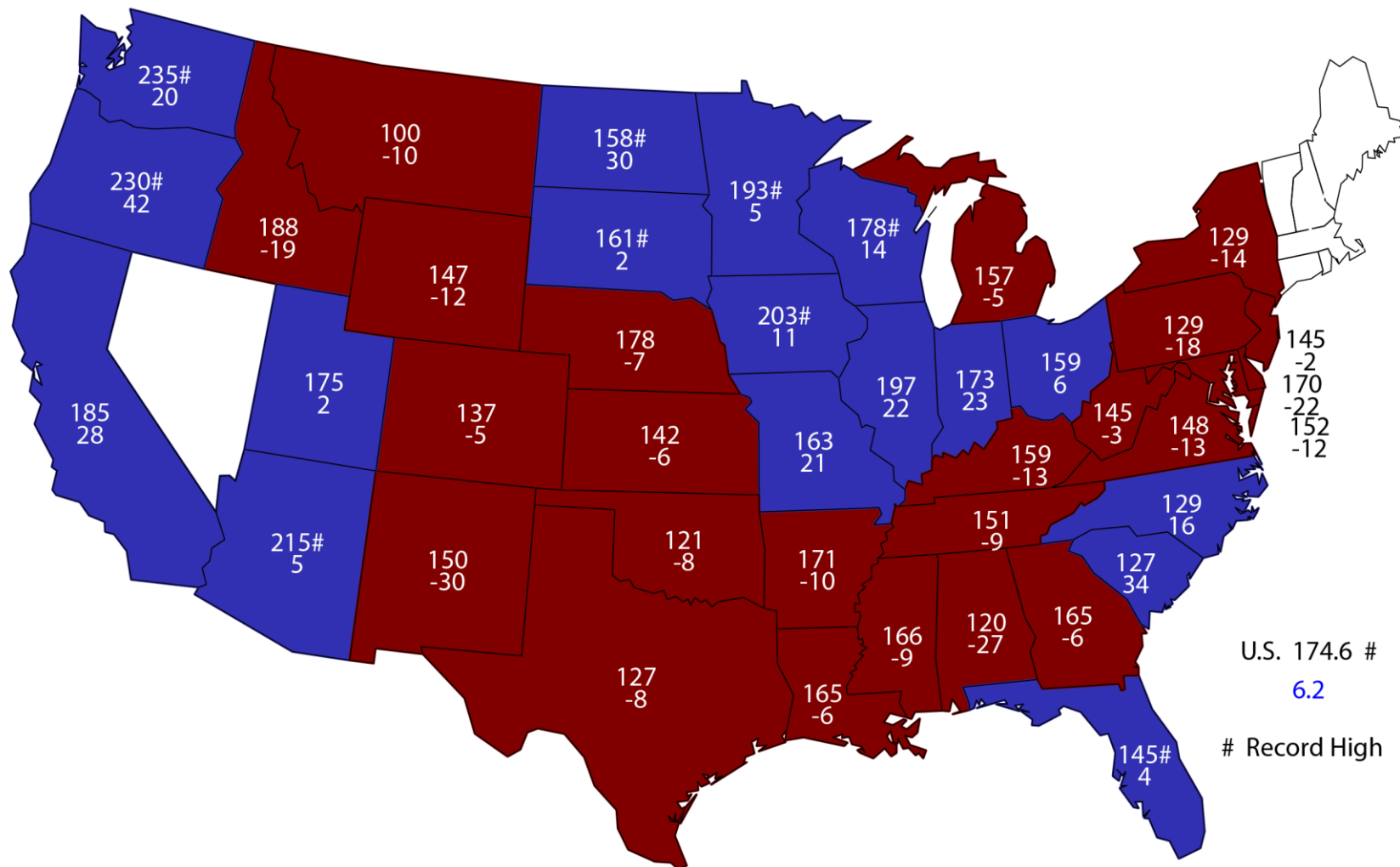
Bushels per Acre



Yield Linear (Yield)

2016 Corn Yield

Bushels and Change From Previous Year



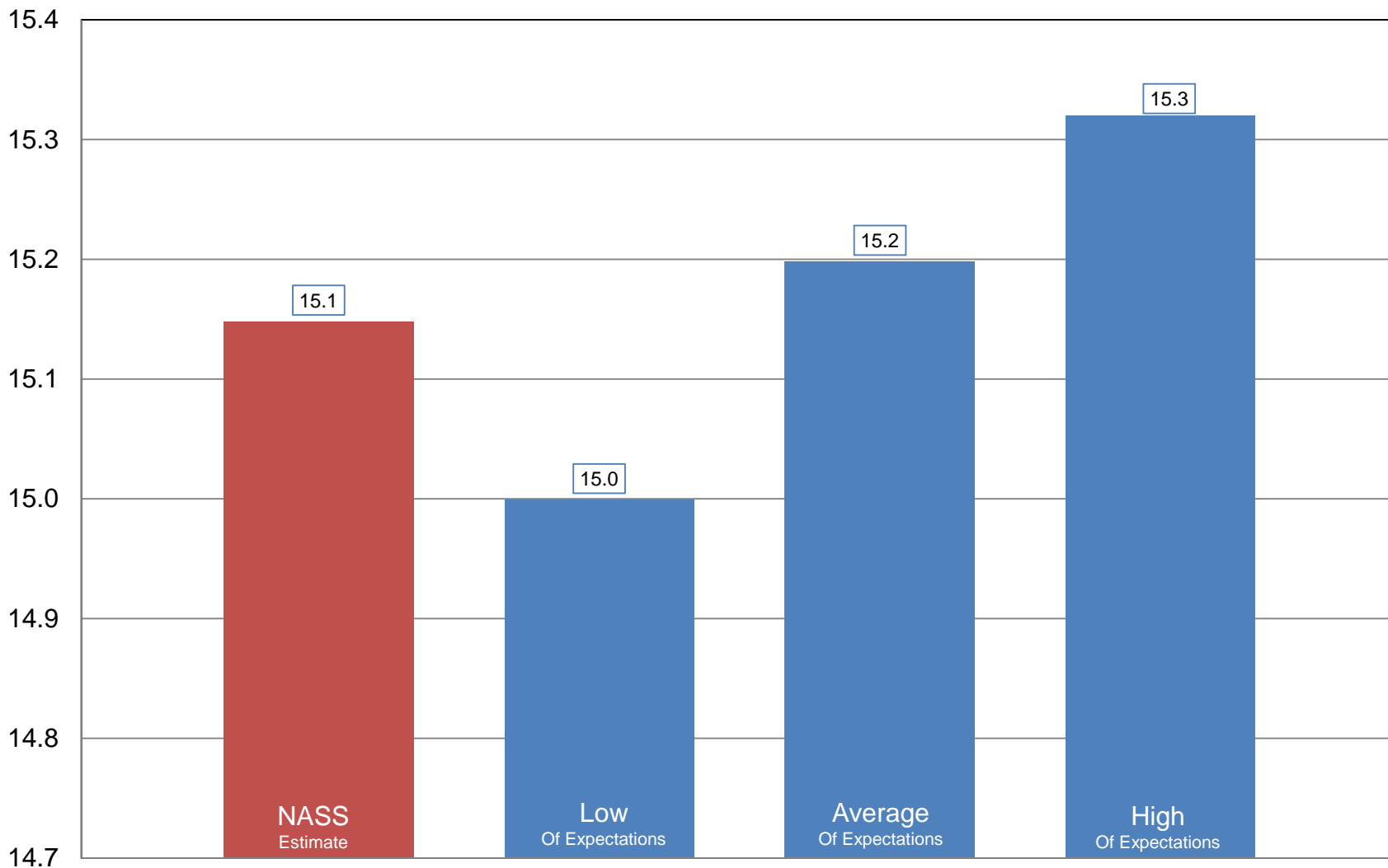
U.S. 174.6 #
 6.2
 # Record High



NASS Estimate vs. Expectations

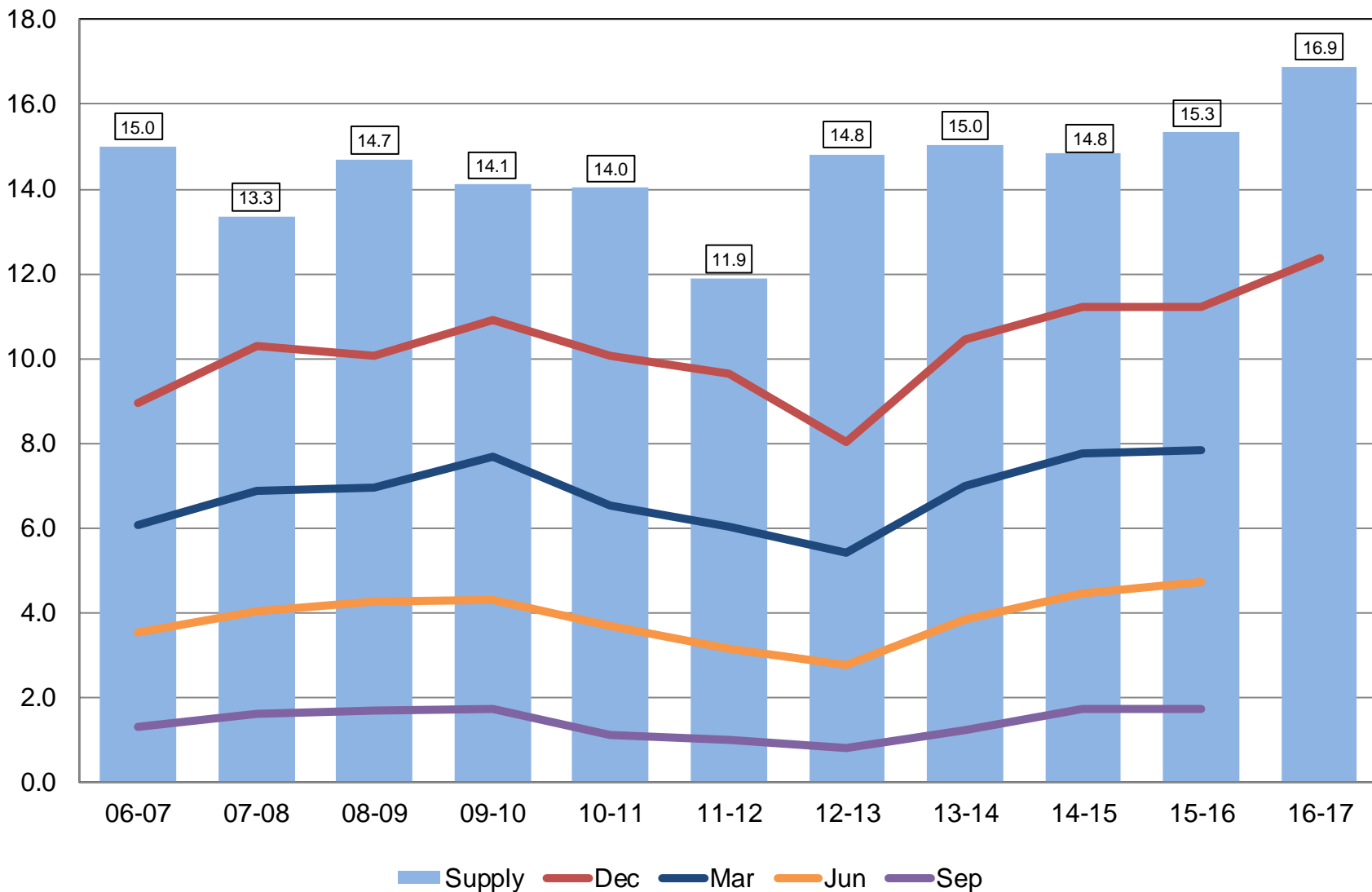
Corn Production

Billion Bushels



Corn Stocks United States

Billion Bushels

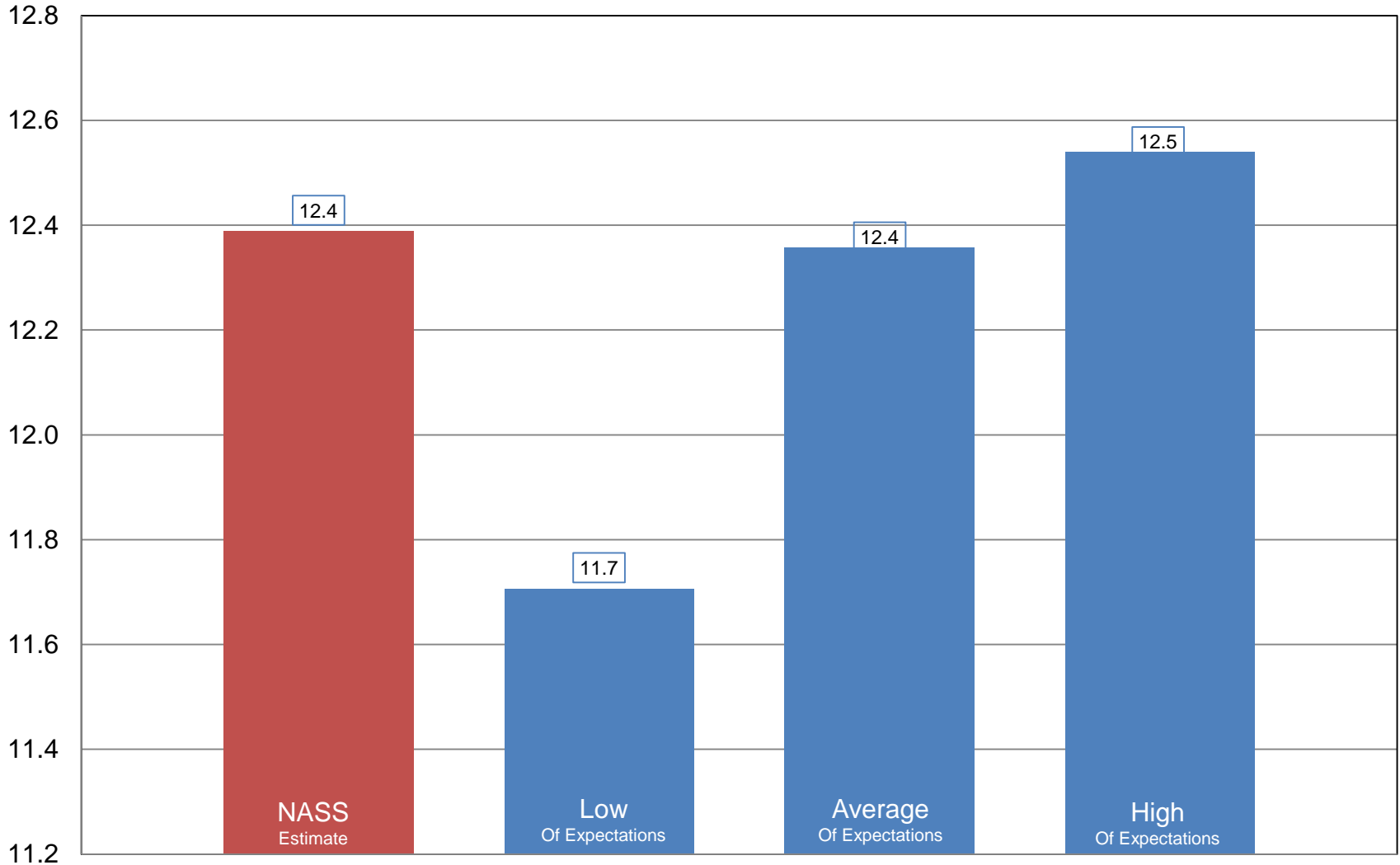




NASS Estimate vs. Expectations

Corn Stocks

Billion Bushels



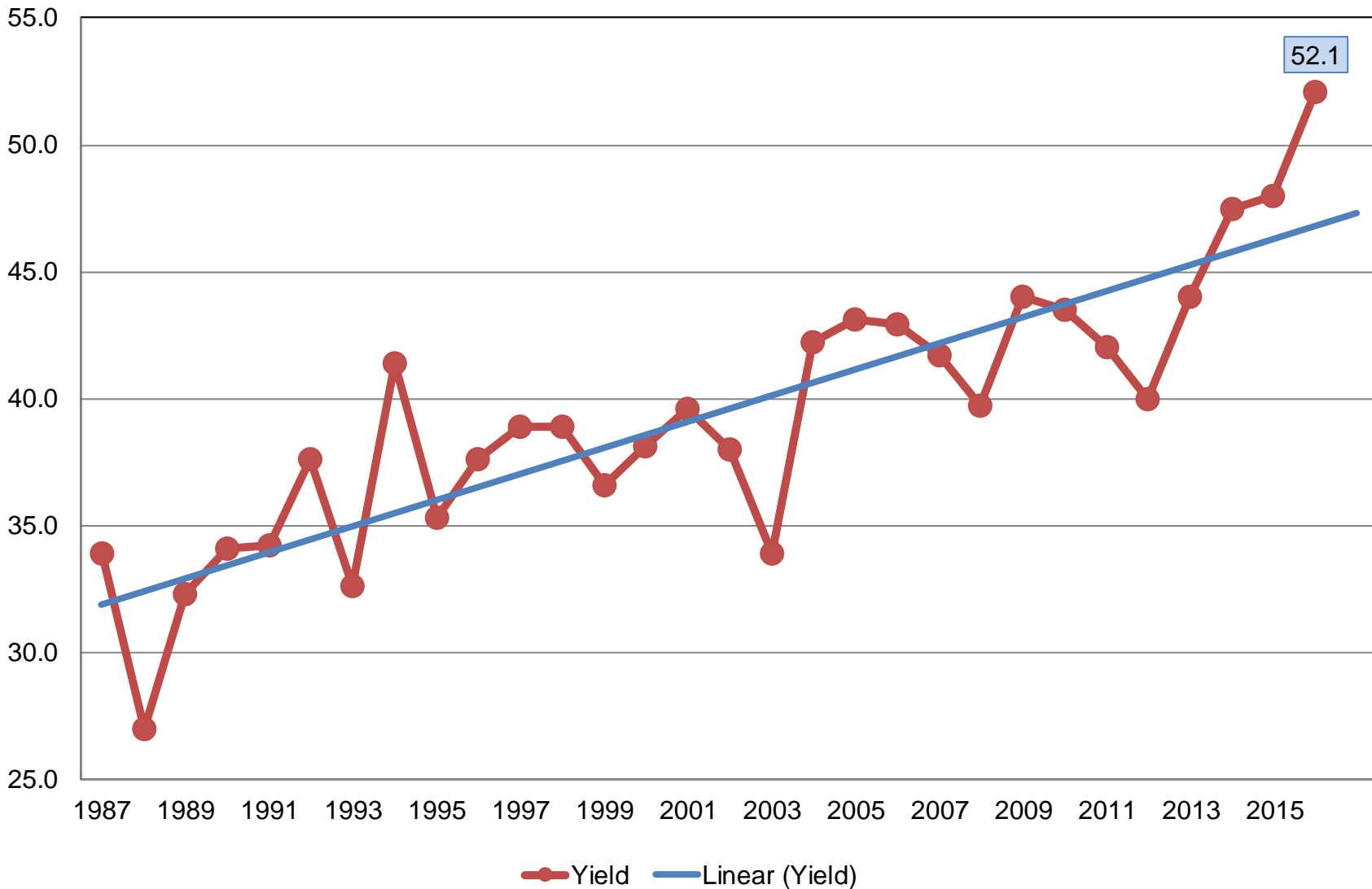


2016 Crop Production – Annual

Crop	Unit	January 2017	% Change From Previous Forecast	% Change From Previous Season
Soybeans				
Planted	Mil Ac	83.4	-0.3	+0.9
Harvested	Mil Ac	82.7	-0.4	+1.2
Yield	Bu/Ac	52.1	-0.8	+8.5
Production	Bil Bu	4.31	-1.2	+9.7
Stocks	Bil Bu	2.90	NA	+6.7

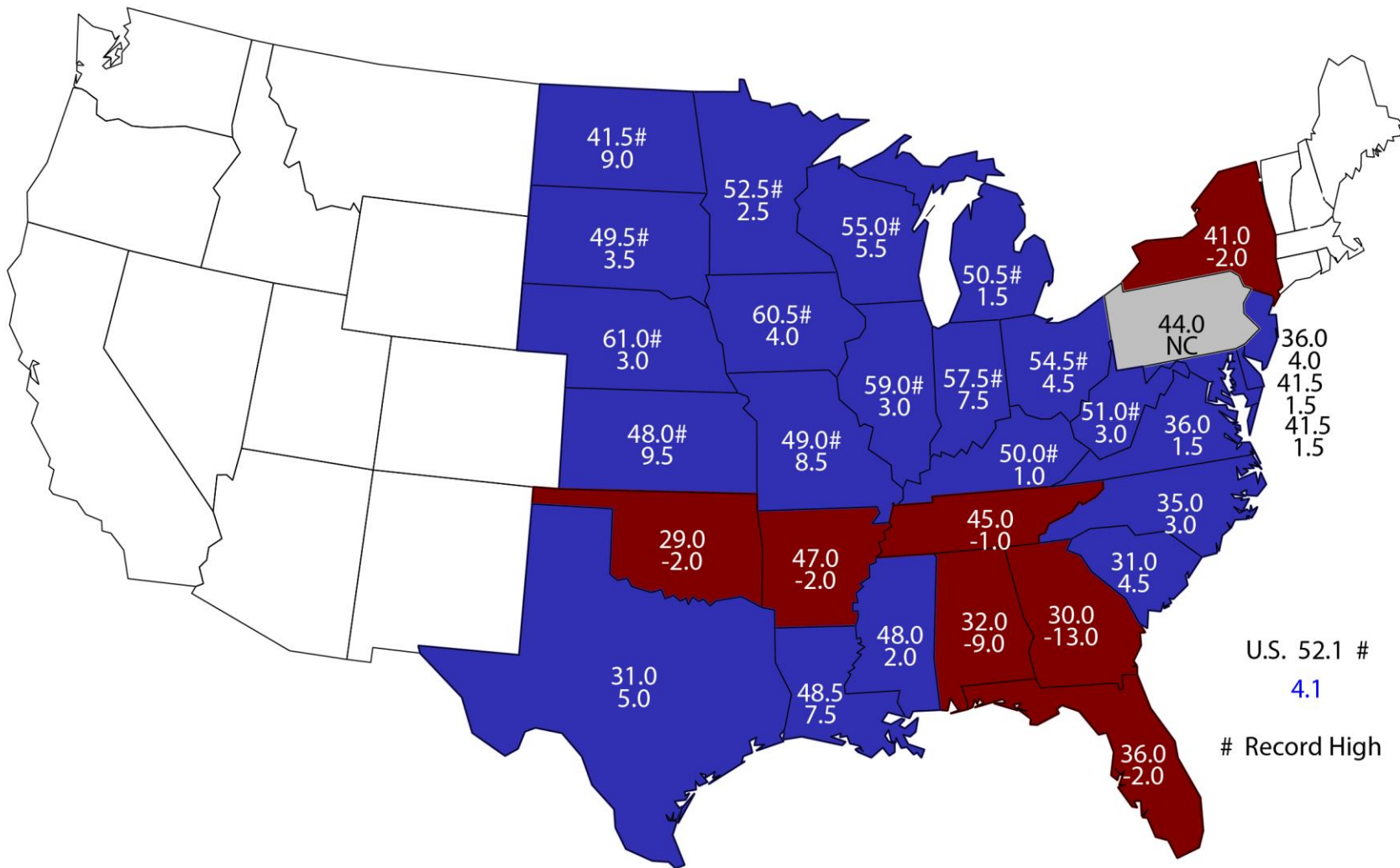
Soybean Yield United States

Bushels per Acre



2016 Soybean Yield

Bushels and Change From Previous Year



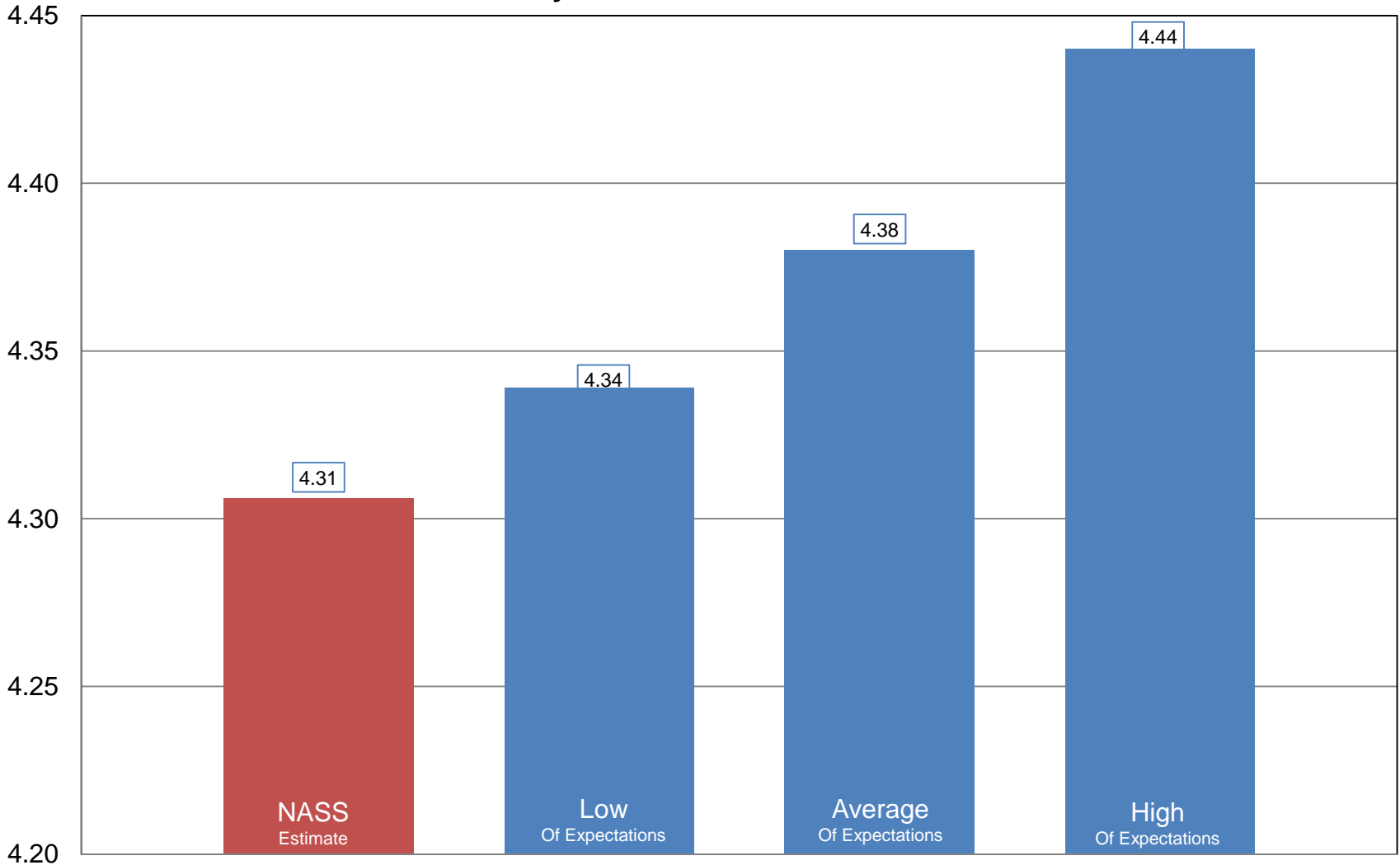
U.S. 52.1 #
4.1
Record High



NASS Estimate vs. Expectations

Soybean Production

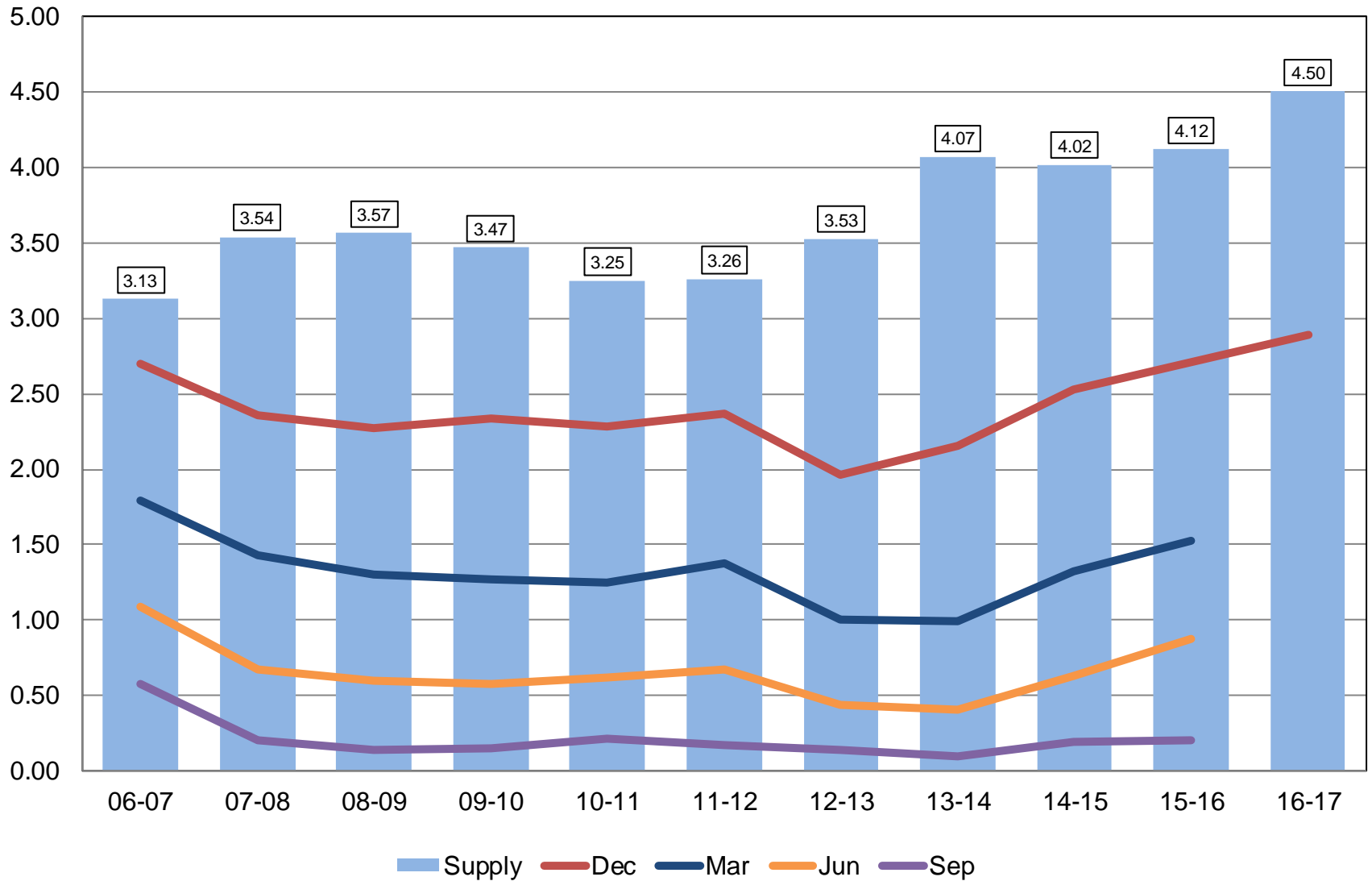
Billion Bushels





Soybean Stocks United States

Billion Bushels

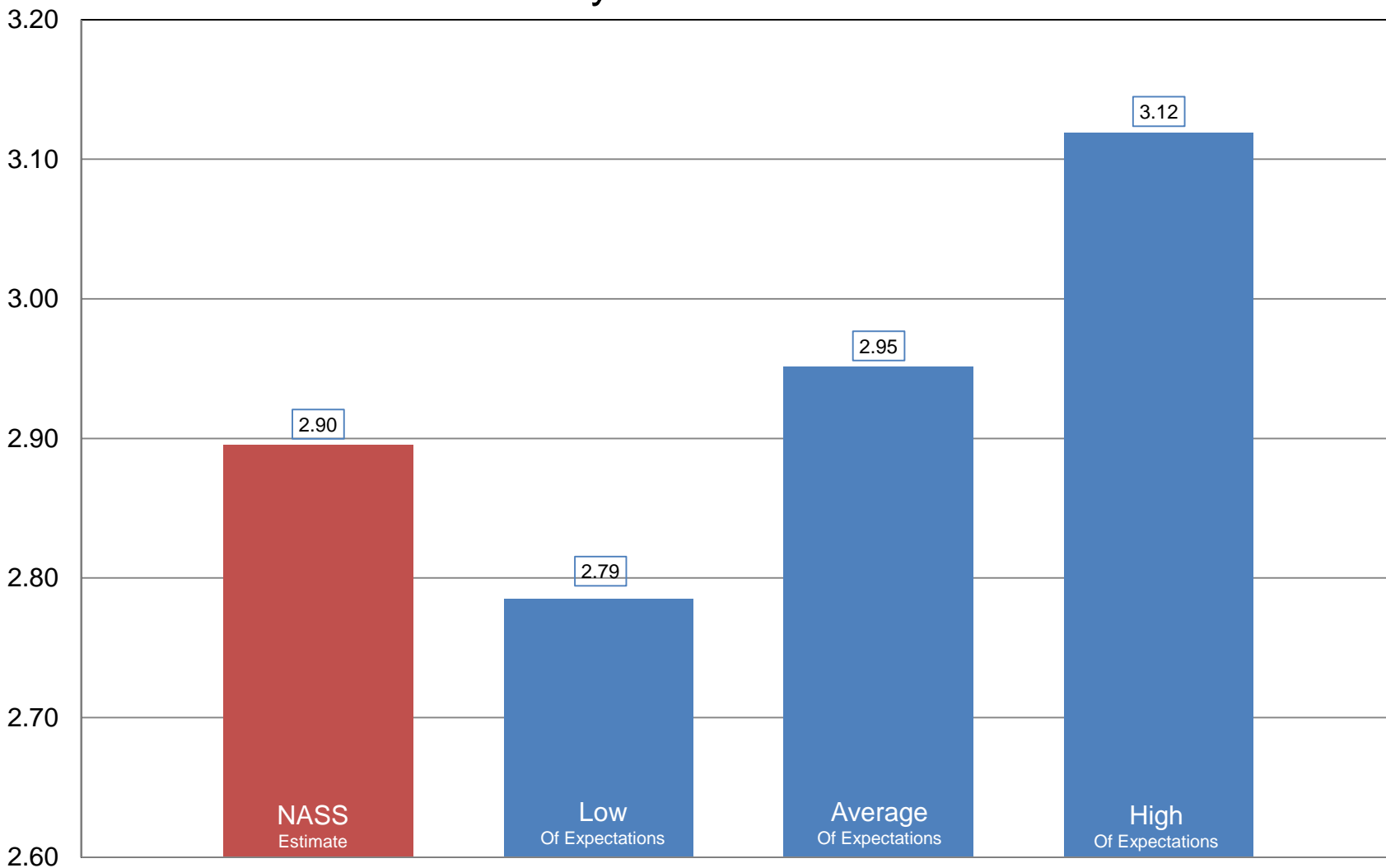




NASS Estimate vs. Expectations

Soybean Stocks

Billion Bushels



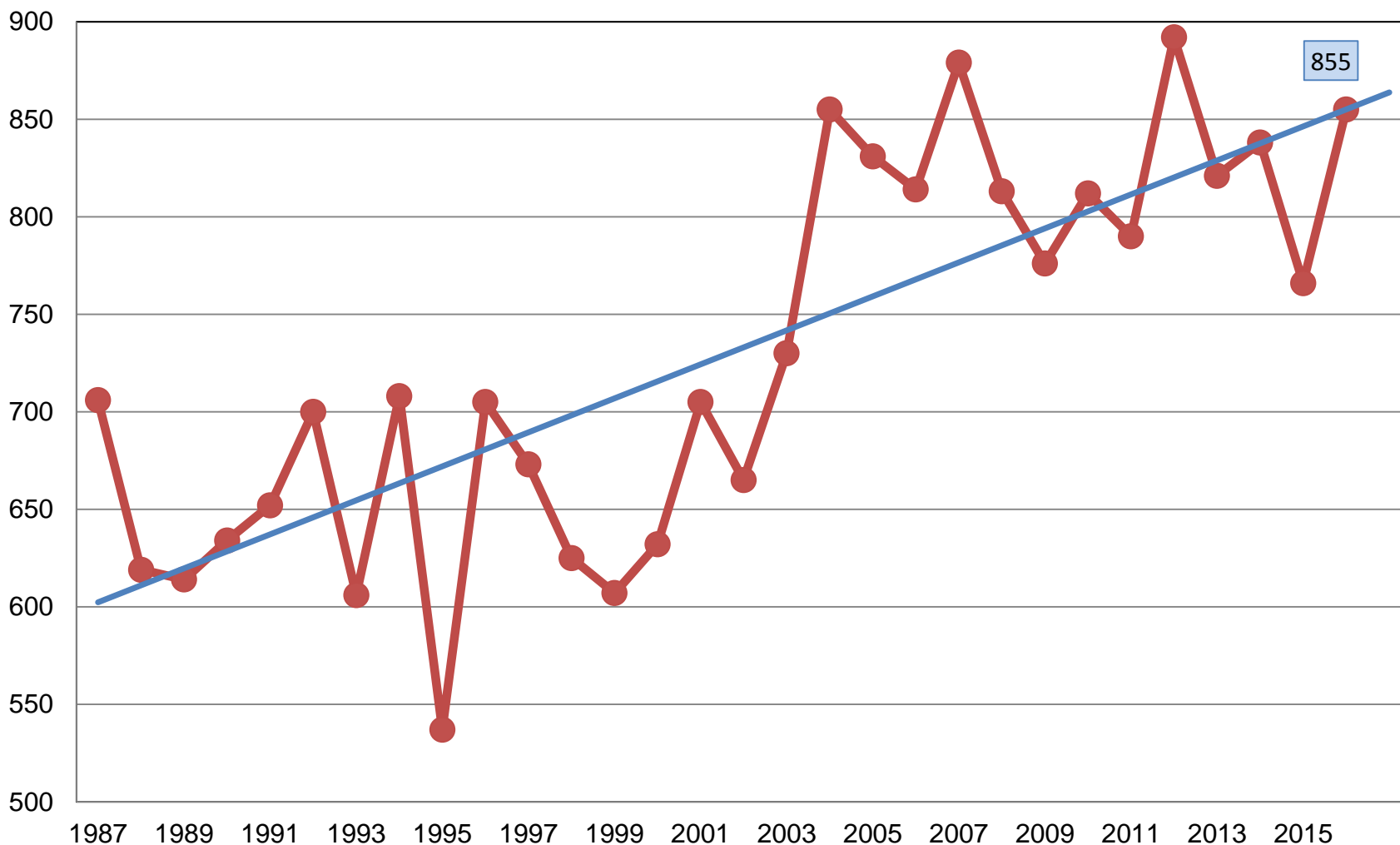


2016 Crop Production – Annual

Crop	Unit	January 2017	% Change From Previous Forecast	% Change From Previous Season
All Cotton				
Planted	Mil Ac	10.1	-0.7	+17.4
Harvested	Mil Ac	9.52	-1.4	+17.9
Yield	Lb/Ac	855	+4.1	+11.6
Production	Mil Bls	17.0	+2.6	+31.6
Cottonseed				
Production	Mil Tons	5.42	+2.7	+34.0

All Cotton Yield United States

Pounds per Acre

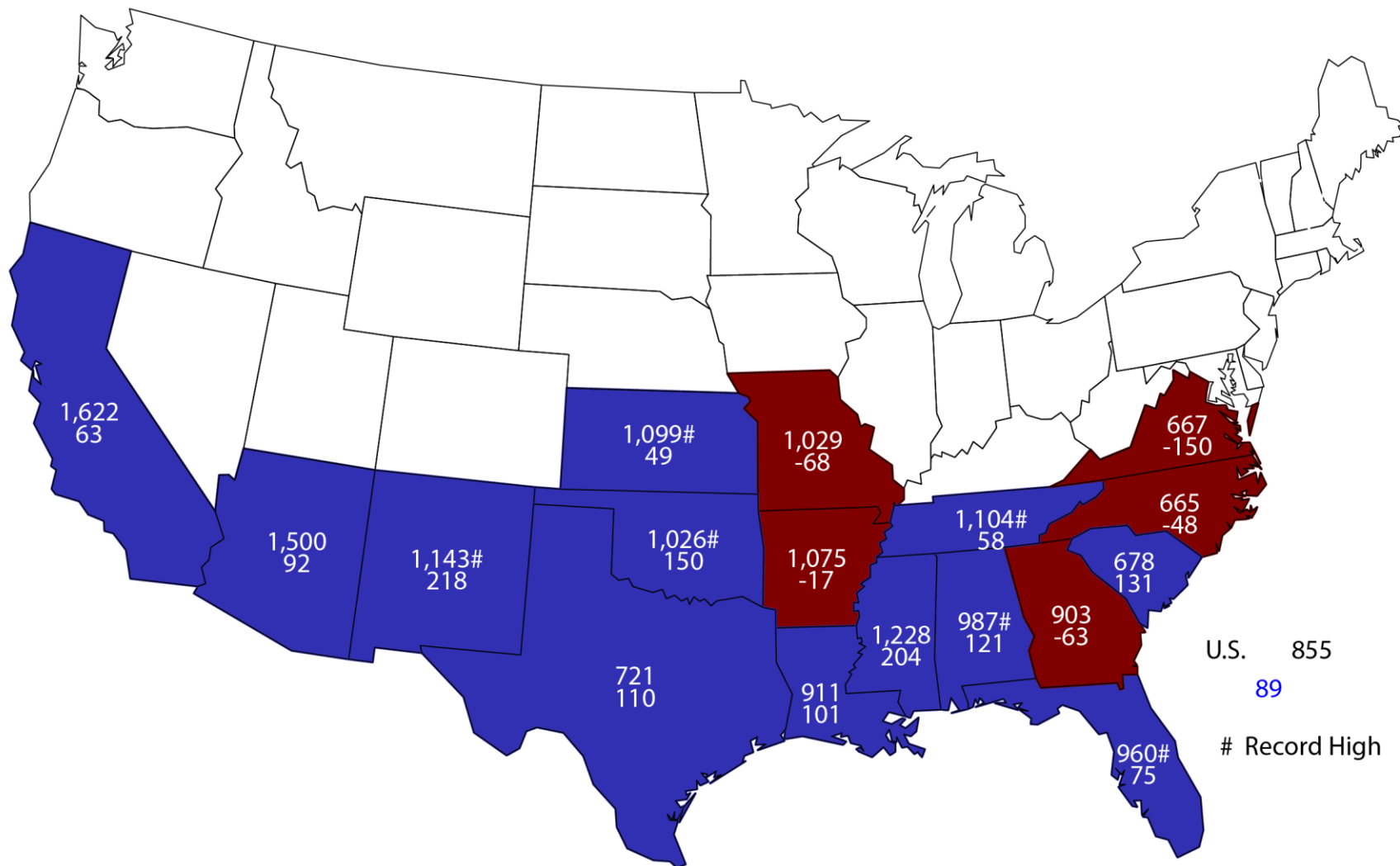


—●— Yield — Linear (Yield)

855

2016 All Cotton Yield

Pounds and Change From Previous Year





2016 Crop Production – Annual

Crop	Unit	January 2017	% Change From Previous Forecast	% Change From Previous Season
Sorghum				
Planted	Mil Ac	6.69	-1.1	-20.9
Harvested	Mil Ac	6.16	+2.0	-21.5
Yield	Bu/Ac	77.9	+1.8	+2.5
Production	Mil Bu	480	+3.9	-19.5
Stocks	Mil Bu	311	NA	-3.5



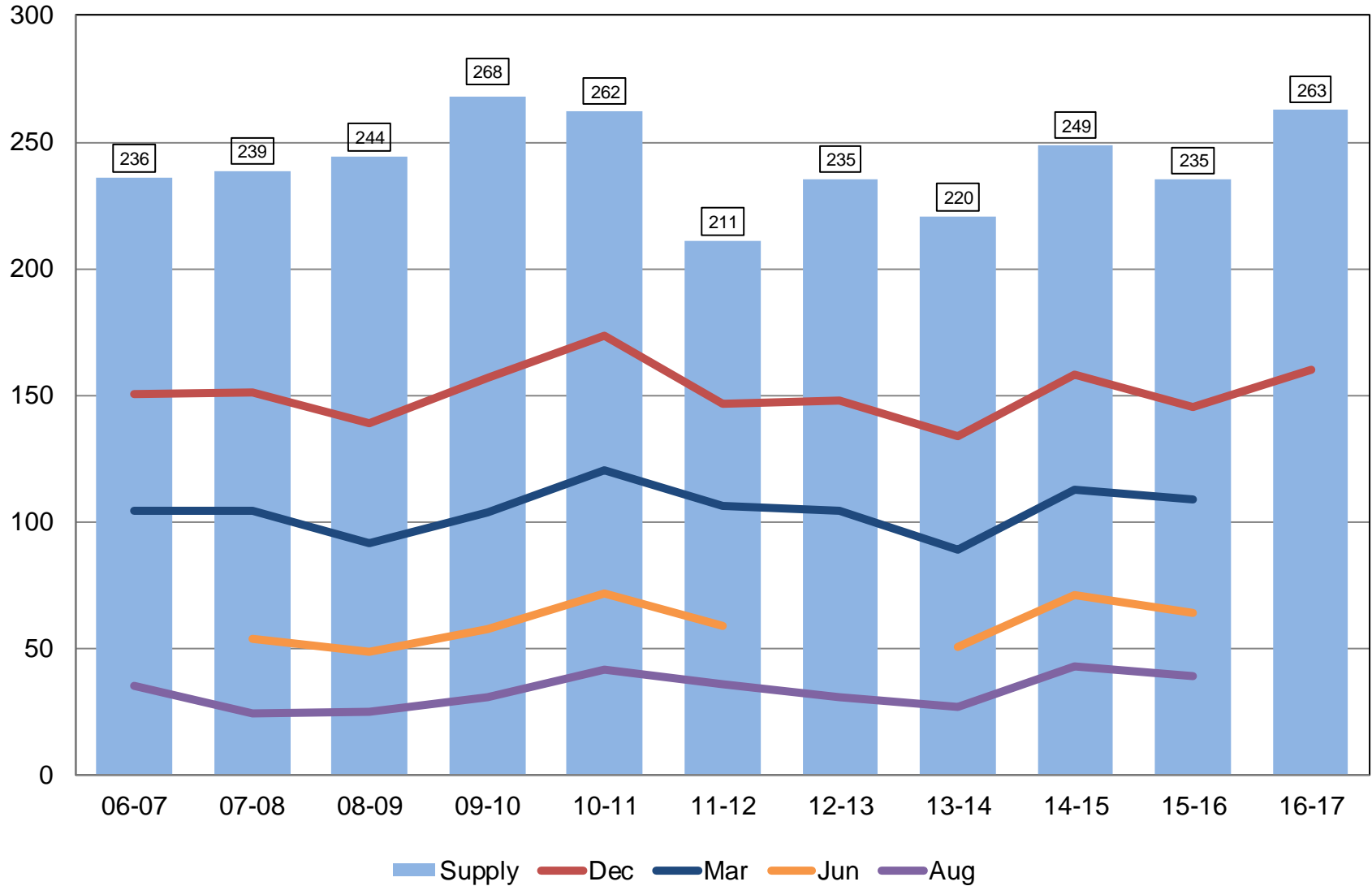
2016 Crop Production – Annual

Crop	Unit	January 2017	% Change From Previous Forecast	% Change From Previous Season
Rice				
Planted	Mil Ac	3.15	-1.0	+20.0
Harvested	Mil Ac	3.10	-1.1	+19.8
Yield	Lbs/Ac	7,237	-3.4	-3.1
Production	Mil Cwt	224	-4.5	+16.0
Stocks	Mil Cwt	160	NA	+10.5



Rough Rice Stocks United States

Million Hundredweight



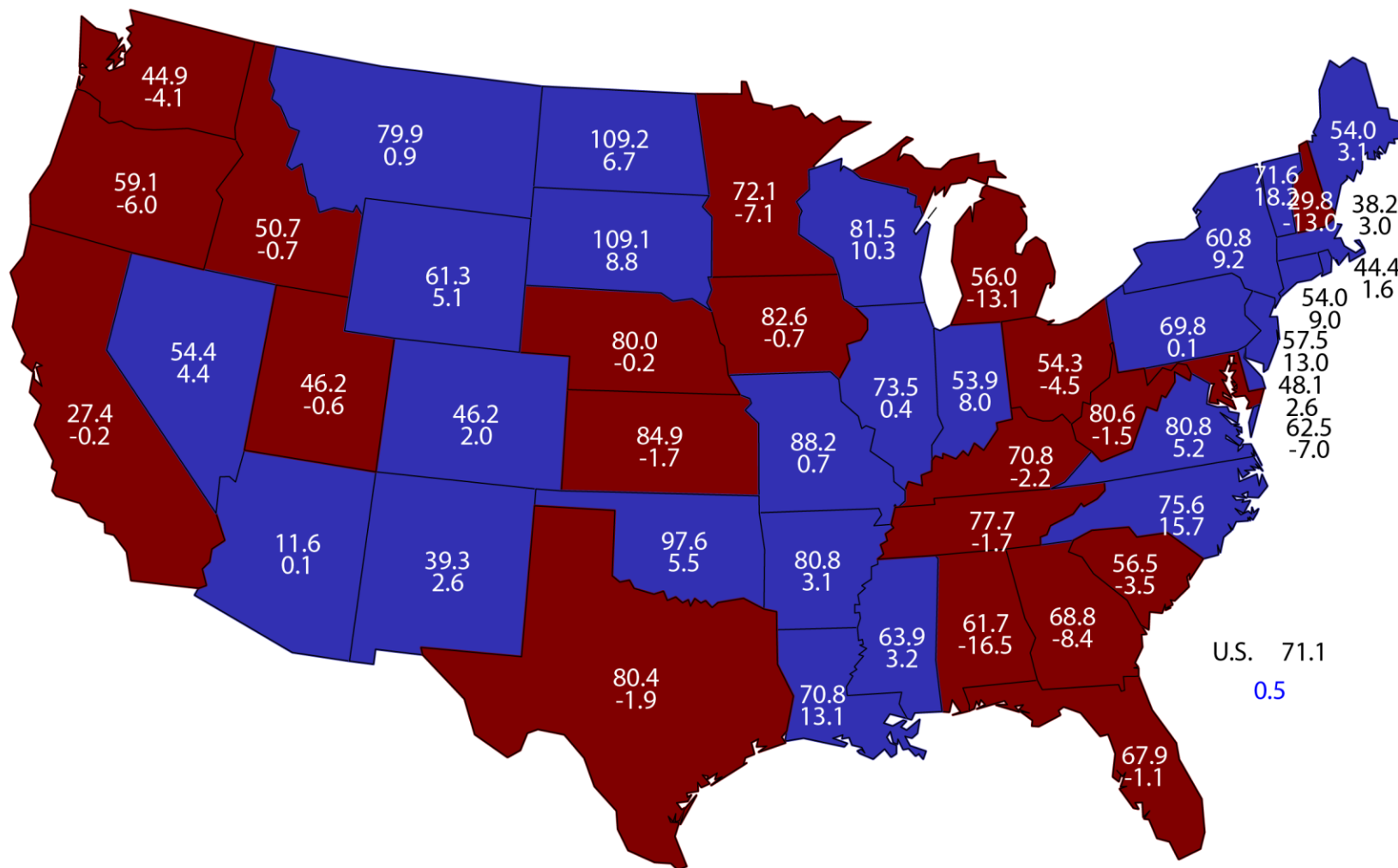


2016 Crop Production – Annual

Crop	Unit	January 2017	% Change From Previous Forecast	% Change From Previous Season
All Hay				
Harvested	Mil Ac	53.5	-4.7	-1.8
Yield	Tons/Ac	2.52	NC	+2.0
Production	Mil Tons	135	-4.8	+0.2
Stocks	Mil Tons	95.8	NA	+0.9

December 1, 2016 Hay Stocks/Production

Percent and Change From Previous Year





2016 Crop Production – Annual

Crop	Unit	January 2017	% Change From Previous Forecast	% Change From Previous Season
Production				
All Other Hay	Mil Tons	76.5	-2.8	+1.3
Alfalfa Hay	Mil Tons	58.3	-7.2	-1.2
Proso Millet	Mil Bu	12.6	NA	-11.3
Peanuts	Bil Lbs	5.68	-8.9	-5.3



2016 Crop Production – Annual

Crop	Unit	January 2017	% Change From Previous Forecast	% Change From Previous Season
Production				
Canola	Bil Lbs	3.08	+2.8	+6.8
Flaxseed	Mil Bu	8.68	NA	-14.0
Mustard Seed	Mil Lbs	96.3	NA	+257.5
Rapeseed	Mil Lbs	19.3	NA	*
Safflower	Mil Lbs	220	NA	+0.8
Sunflowers	Bil Lbs	2.65	+8.0	-9.2



2016 Crop Production – Annual

Crop	Unit	January 2017	% Change From Previous Forecast	% Change From Previous Season
Production				
Sugarcane	Mil Tons	33.0	-2.1	+2.7
Sugarbeets	Mil Tons	36.9	+0.7	+4.3
All Tobacco	Mil Lbs	629	-5.3	-12.6



2016 Crop Production – Annual

Crop	Unit	January 2017	% Change From Previous Forecast	% Change From Previous Season
Production				
A. Winter Peas	Thou Cwt	477	+7.4	+83.5
Dry Peas	Mil Cwt	27.7	+2.4	+51.7
Dry Beans	Mil Cwt	28.7	+3.4	-4.5
Lentils	Mil Cwt	12.7	+2.0	+140.4
Wrinkled Seed	Thou Cwt	439	NA	+14.3



2016 Crop Production – Annual

Crop	Unit	January 2017	% Change From Previous Forecast	% Change From Previous Season
Production				
Potatoes	Mil Cwt	441	+0.3	-0.1
Sweet Potatoes	Mil Cwt	31.5	NA	+1.7
Peppermint Oil	Mil Lbs	5.80	NA	-1.5
Spearmint Oil	Mil Lbs	3.21	NA	+9.5
Hops	Mil Lbs	87.1	NA	+10.5



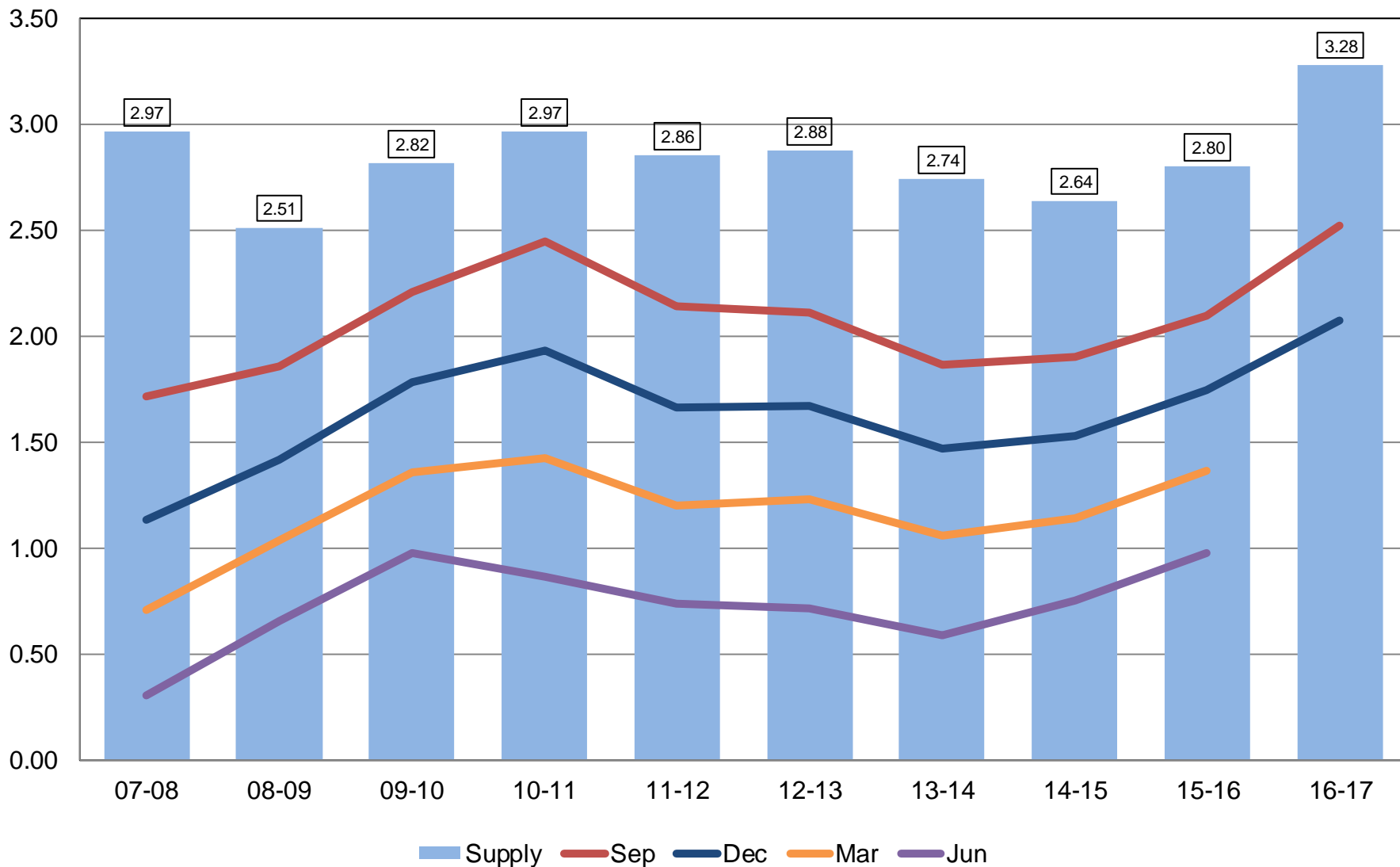
2016 Crop Production – Annual

Crop	Unit	January 2017	% Change From Previous Estimate	% Change From Previous Year
Stocks				
Wheat, All	Bil Bu	2.07	NA	+18.7
Barley	Mil Bu	193	NA	+6.7
Oats	Mil Bu	75.5	NA	-8.7



All Wheat Stocks United States

Billion Bushels

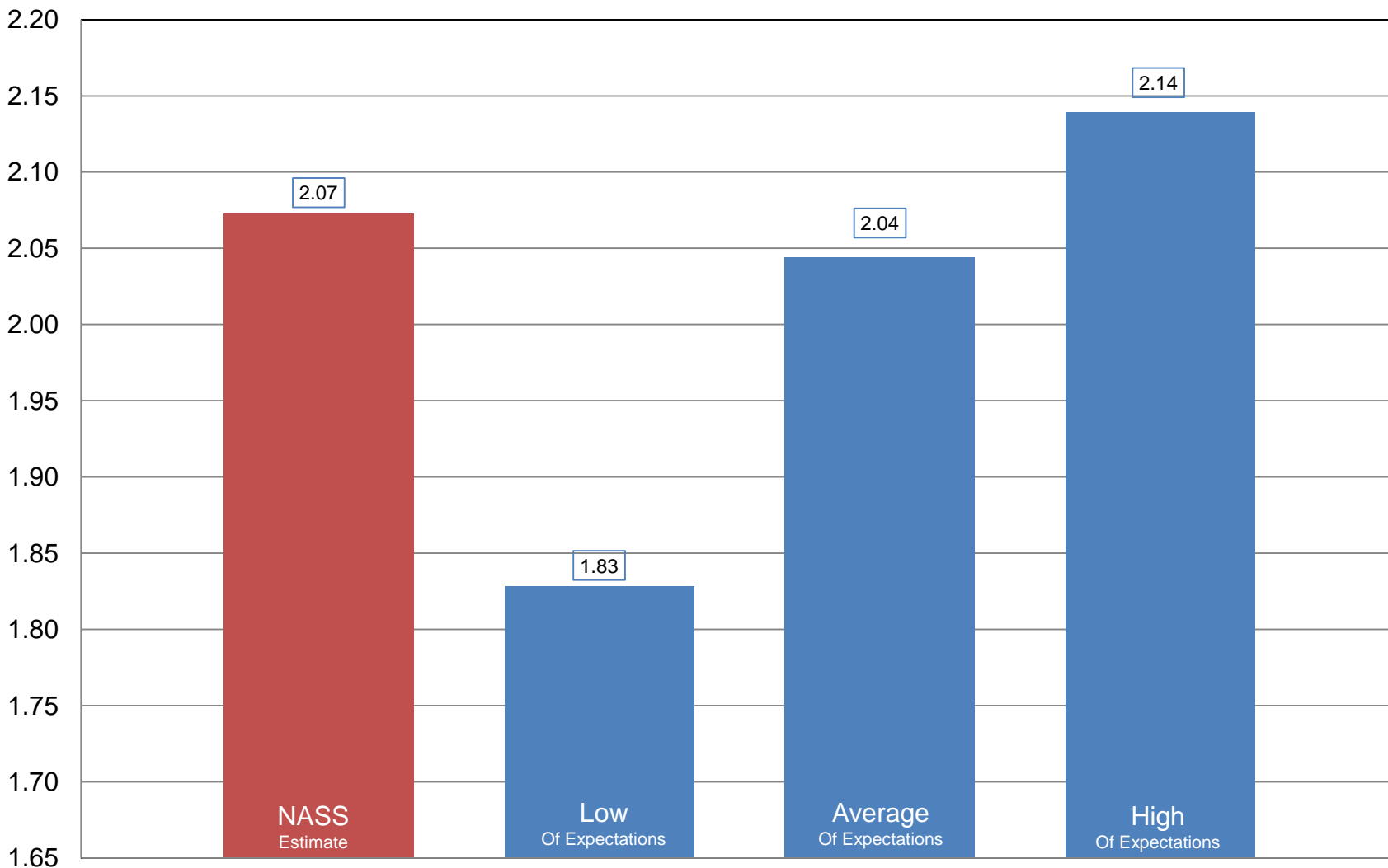




NASS Estimate vs. Expectations

All Wheat Stocks

Billion Bushels





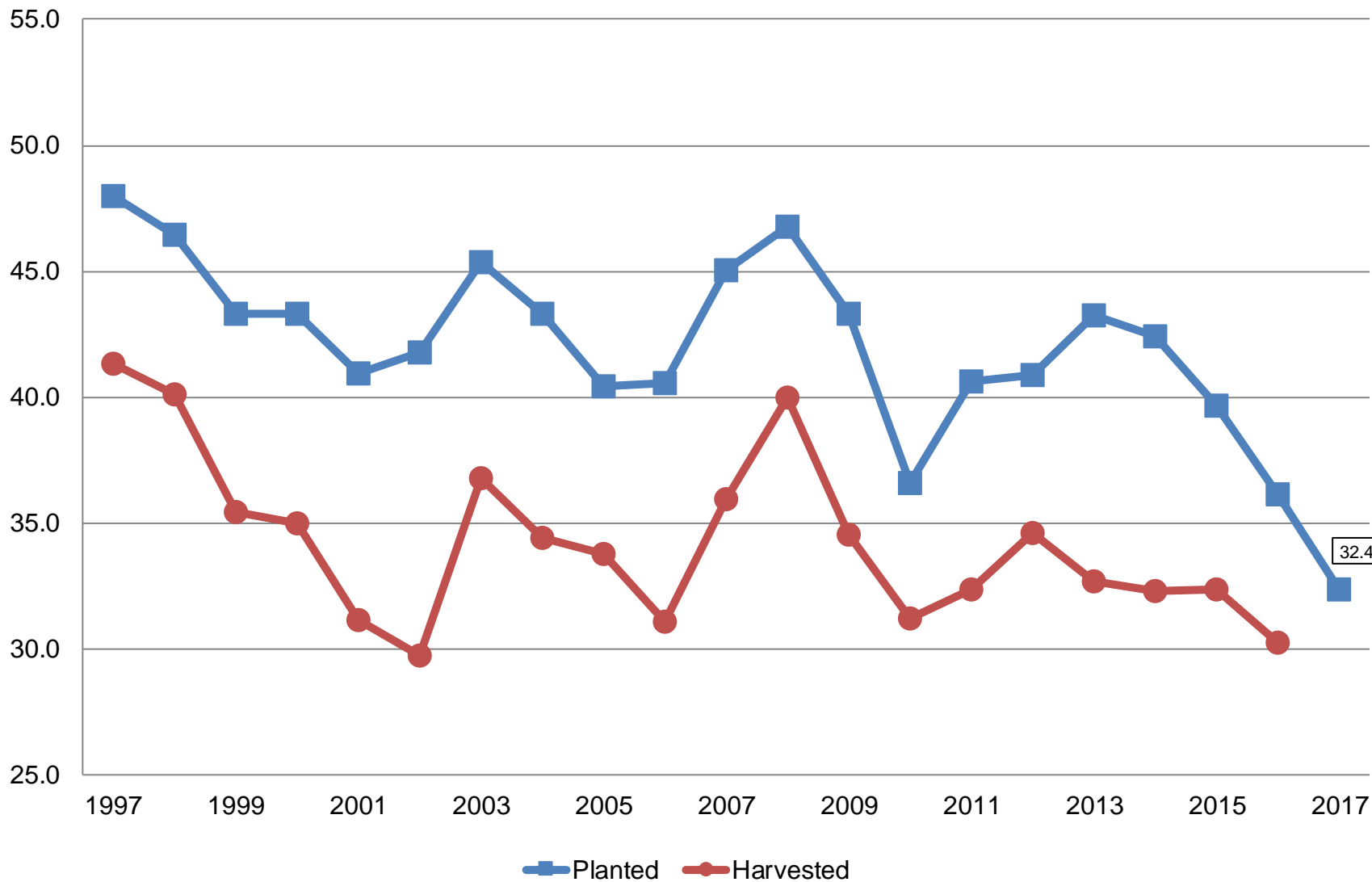
Winter Wheat Seedings

Crop	Unit	January 2017	% Change From Previous Forecast	% Change From Previous Season
Wheat, Winter				
Planted	Mil Ac	32.4	NA	-10.4



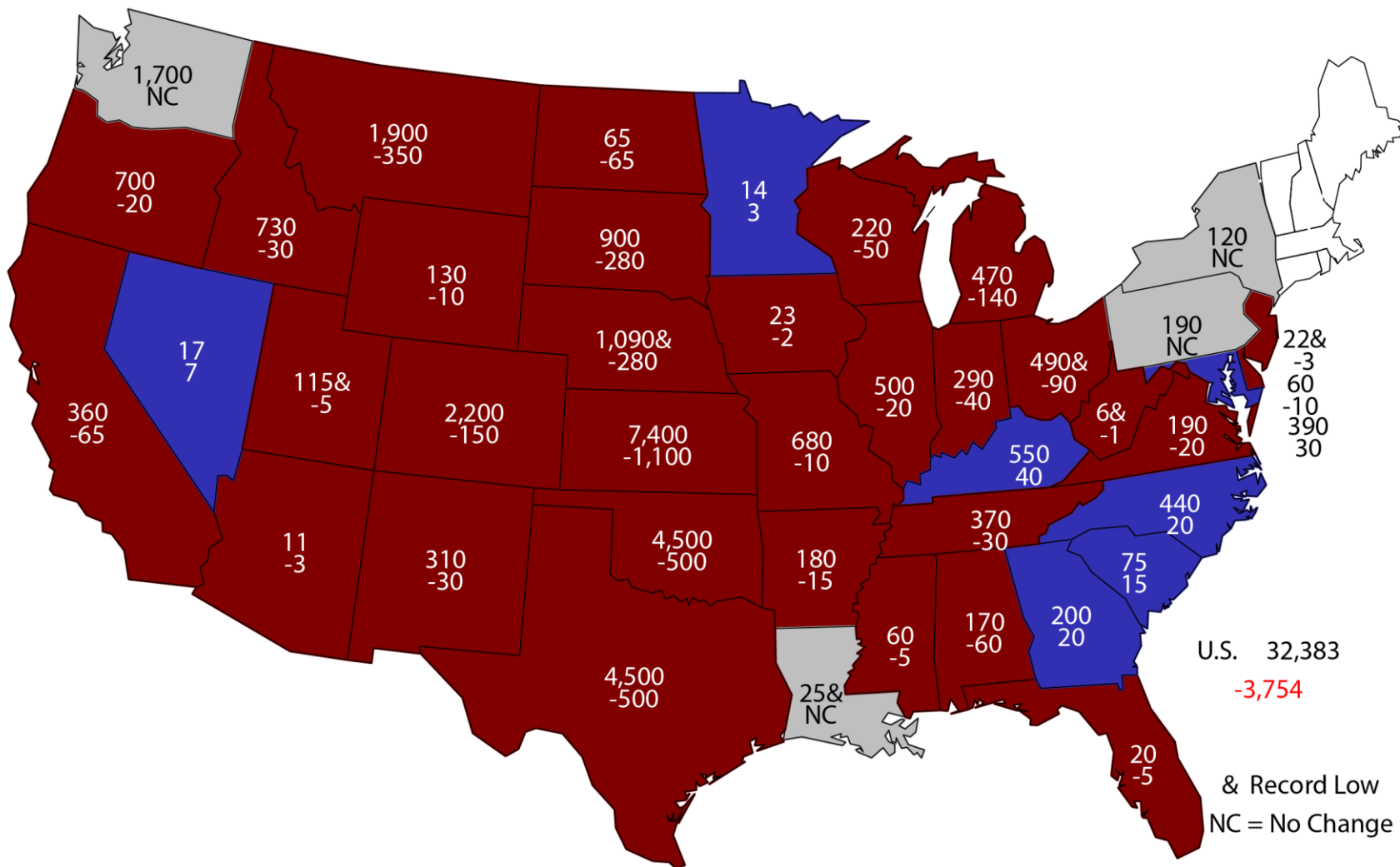
Winter Wheat Acres United States

Million Acres



2017 Winter Wheat Planted Area

(000) Acres and Change From Previous Year

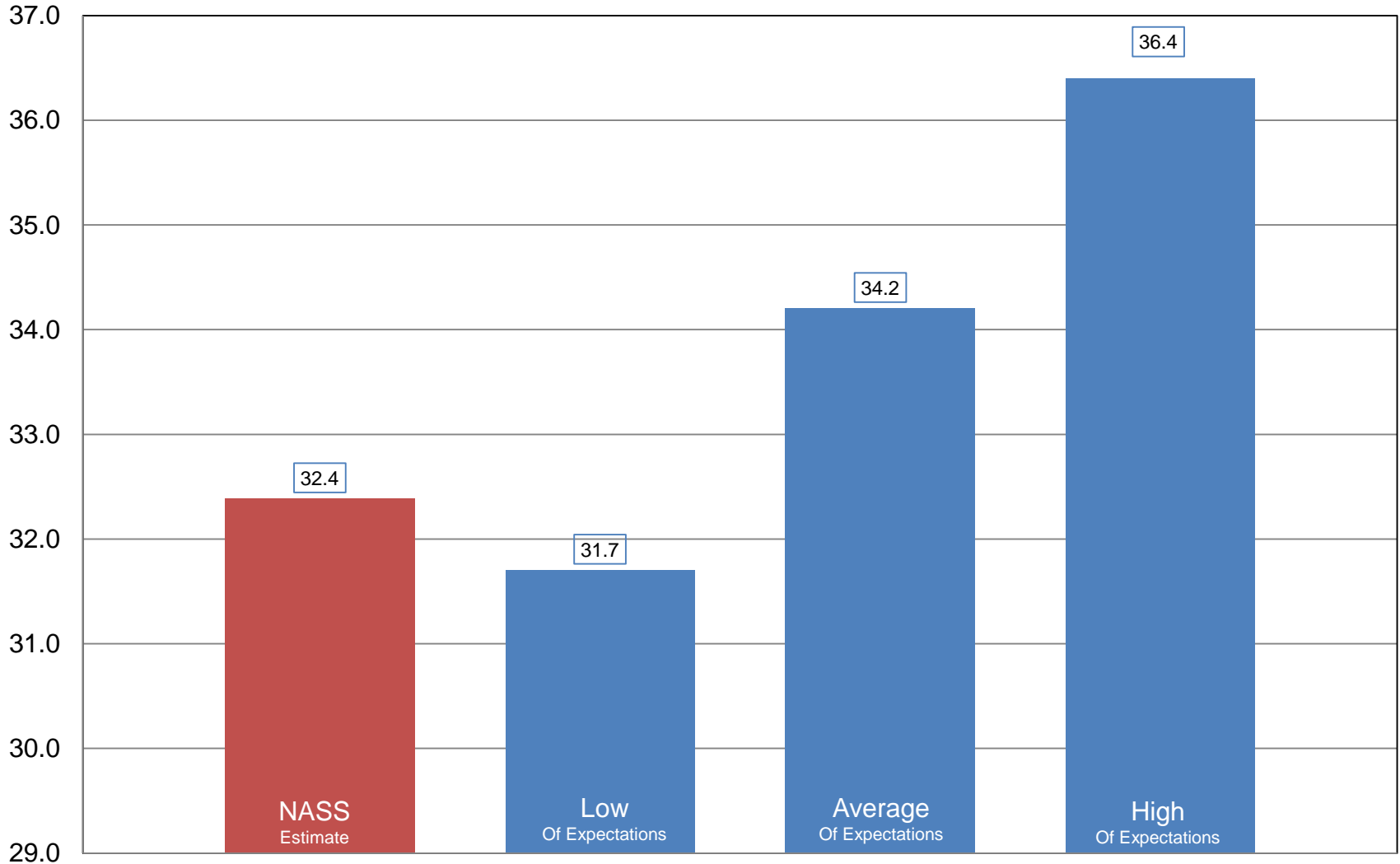




NASS Estimate vs. Expectations

Winter Wheat Area Seeded

Million Acres





Survey Overview

Florida Citrus

	Objective Surveys (Size and Drop)	Fruit Maturity	Row Count
Survey Type	Field Observations	Laboratory Tests	Field Observations
Crops Included	Oranges excl. Navels Grapefruit Late Tangerines	Oranges excl. Navels	Non-Valencia Oranges Tangelos
Sample Size	1,642 groves	321 samples	61,275 rows
Collection Period	December 12-23	December 27-28	December 27-28
Testing Period		December 29-30	



January 2017 Crop Production

Crop	Unit	January 2017	% Change From Previous Forecast	% Change From Previous Season
Production				
Oranges	Mil Tons	5.39	+1.4	-8.8
Grapefruit	Thou Tons	758	+2.0	-5.6
Lemons	Thou Tons	862	-5.5	-3.1
Tangerines & Mandarins	Thou Tons	991	+0.1	+4.0



Upcoming Reports

Release Date	Report Title
January 23	Cotton Ginnings
January 27	Cattle on Feed
January 31	Agricultural Prices Cattle Sheep and Goats
February 1	CAIR: Cotton System CAIR: Fats and Oils CAIR: Flour Milling CAIR: Grain Crushings
February 9	Crop Production
February 23	County Estimates Corn, Soybeans, Sorghum, Sunflower



United States Department of Agriculture
National Agricultural Statistics Service

All Reports Available At
www.nass.usda.gov

For Questions
202-720-2127
800-727-9540
nass@nass.usda.gov