

NATIONAL GEODETIC SURVEY

GPRA & County Scorecard Brown Bag

Brett Howe

13 November 2006



National Oceanic and Atmospheric Administration

Presentation Overview

- Overview
- Background
- Partners
- Details
- Results
- Next Steps



Overview

Measures the percentage of U.S. counties rated as fully enabled or substantially enabled with accurate positioning capacity

- Goal: Increase % of counties rated as substantially or fully enables from 25% in 2004 to 90% in 2011
- County Scorecard is an important component



Overview

- FY06 was first year of implementation
 - a more customer, outcome focused measure
 - replaces “old” GPRA measure: Percent of National Spatial Reference System Complete
- **Extremely High Visibility.** Reported to:
 - National Ocean Service
 - Department of Commerce
 - President’s Office of Management and Budget
 - Congress
 - The general public (through PART at www.expectmore.gov)



Background

Why are we doing this?

- GPRA- Government Performance and Results Act of 1993
 - requires agency reporting of performance goals and targets
- DOC Inspector General Report, February 2003,
 - recommended reevaluation of old GPRA measure
- to reach out and interact with our core customers
 - for input
 - for education
- to improve our Products and Services
- to improve management decisions on how best to allocate resources



Who is involved in this process?

- NGS Leadership
- State Geodetic Representatives
 - local County Surveyors
 - GIS Professionals
- State Advisors / Coordinators
- Products and Services Committee
- Other Partners
 - National Association of County Surveyors
 - American Congress on Surveying and Mapping
 - National Association of Counties



GPRA Measure Details

Indicator:

By County, a measure of the NOAA-provided level of infrastructure, tools, and local capacity needed for accurate positioning as follows:

RED – Not yet classified

YELLOW – County “substantially enabled” to conduct accurate positioning (Use OPUS as a Proxy)

GREEN – County is “fully enabled” to conduct accurate positioning (Use County Scorecard for validation and to improve NGS products and services)

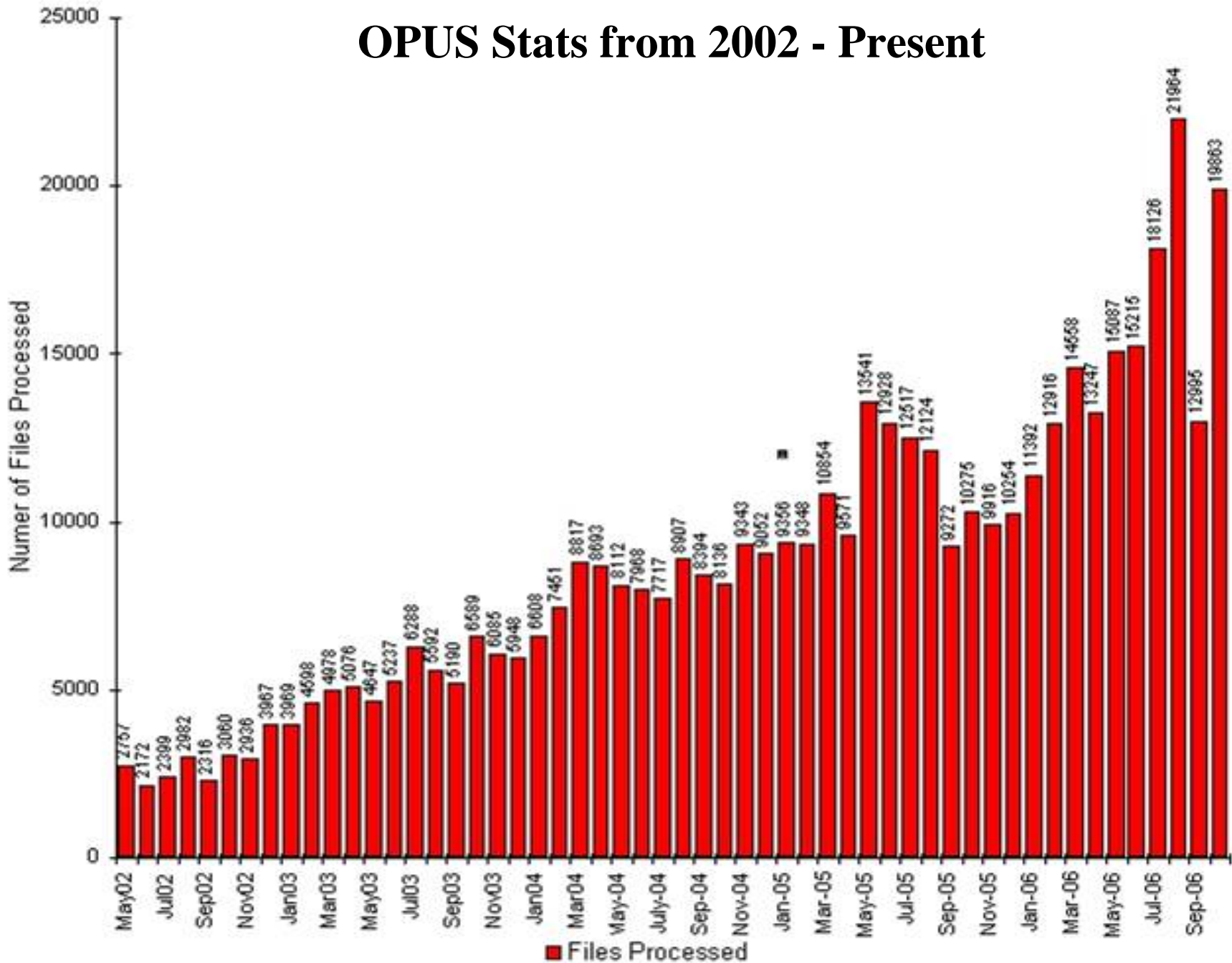


Definition of Substantially Enabled

- Indicates County has demonstrated it has the NOAA-enabled infrastructure, tools, and local capacity needed for accurate positioning
- Measures local OPUS use as a proxy
- Indicated by 25 or more OPUS solution generations in a given county in the last year.

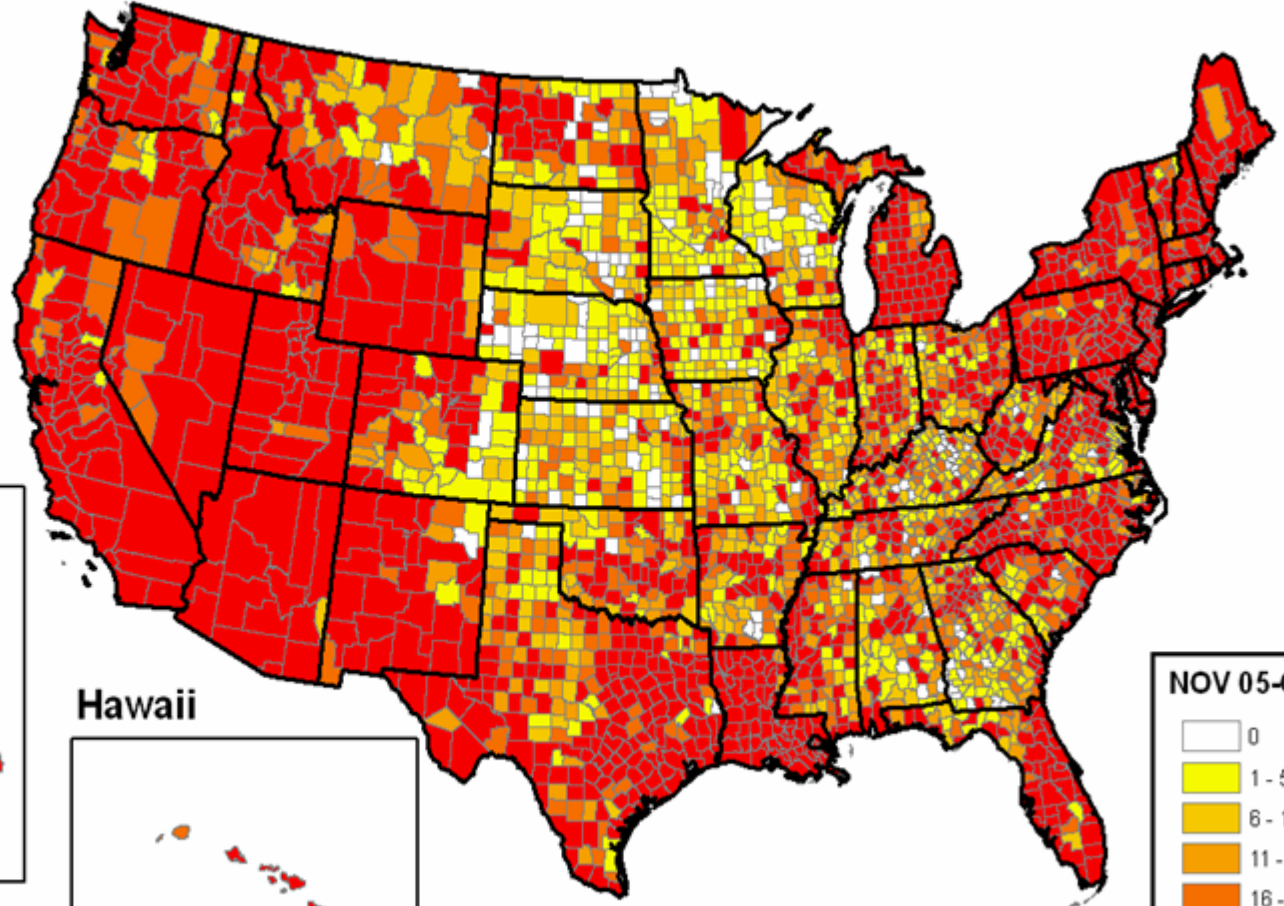


OPUS Stats from 2002 - Present

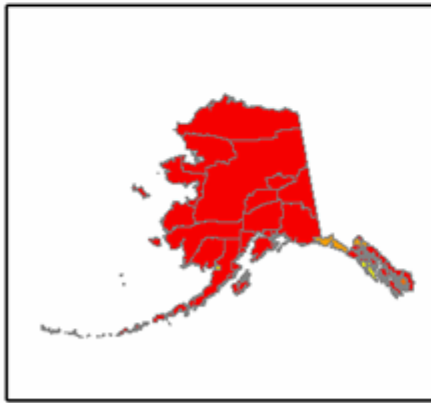


OPUS Usage November 2005 Through October 2006

Total = 167,451



Alaska



Hawaii



NOV 05-OCT 06	
0	5.71%
1 - 5	17.03%
6 - 10	11.98%
11 - 15	9.05%
16 - 24	12.05%
25 - 2511	43.65%

Hale 11/2/2006



National Oceanic and Atmospheric Administration

Definition of Fully Enabled

- Indicates county validated NOAA-enabled infrastructure, tools, and local capacity needed for accurate positioning. This is indicated by having the four following elements:
 1. The county participates in the State Advisor/Coordinator program or has a State Designated Equivalent.
 2. NGS has identified a County Designated Representative such as: County Surveyor, County Engineer, GIS Administrator, or equivalent.
 3. County has submitted accepted “blue book” data to NGS through activities such as: leveling project software, GPS projects and OPUS DB (when available).
 4. County completes a county-based, accurate-positioning scorecard (County Scorecard).



County Scorecard Details

- Developed over the two years in partnership with NACS
- Gauges the local use of NOAA positioning tools and services as well as customer satisfaction.
- Web-based. Uses Survey Monkey web survey tool.
- Contains 23 questions specifically focusing on infrastructure, NGS models and tools, NGS capacity building and outreach, and overall satisfaction.
- Paperwork Reduction Act Compliant
- Two distributions so far:
 - In December 2005, the County Scorecard was finalized and distributed to 200 NACS members. Survey closed in February 2006. Received 104 responses.
 - In June 2006 the 2nd Distribution was sent to 737 State Geodetic Representatives. Survey closed in September 2006. Received 309 responses.



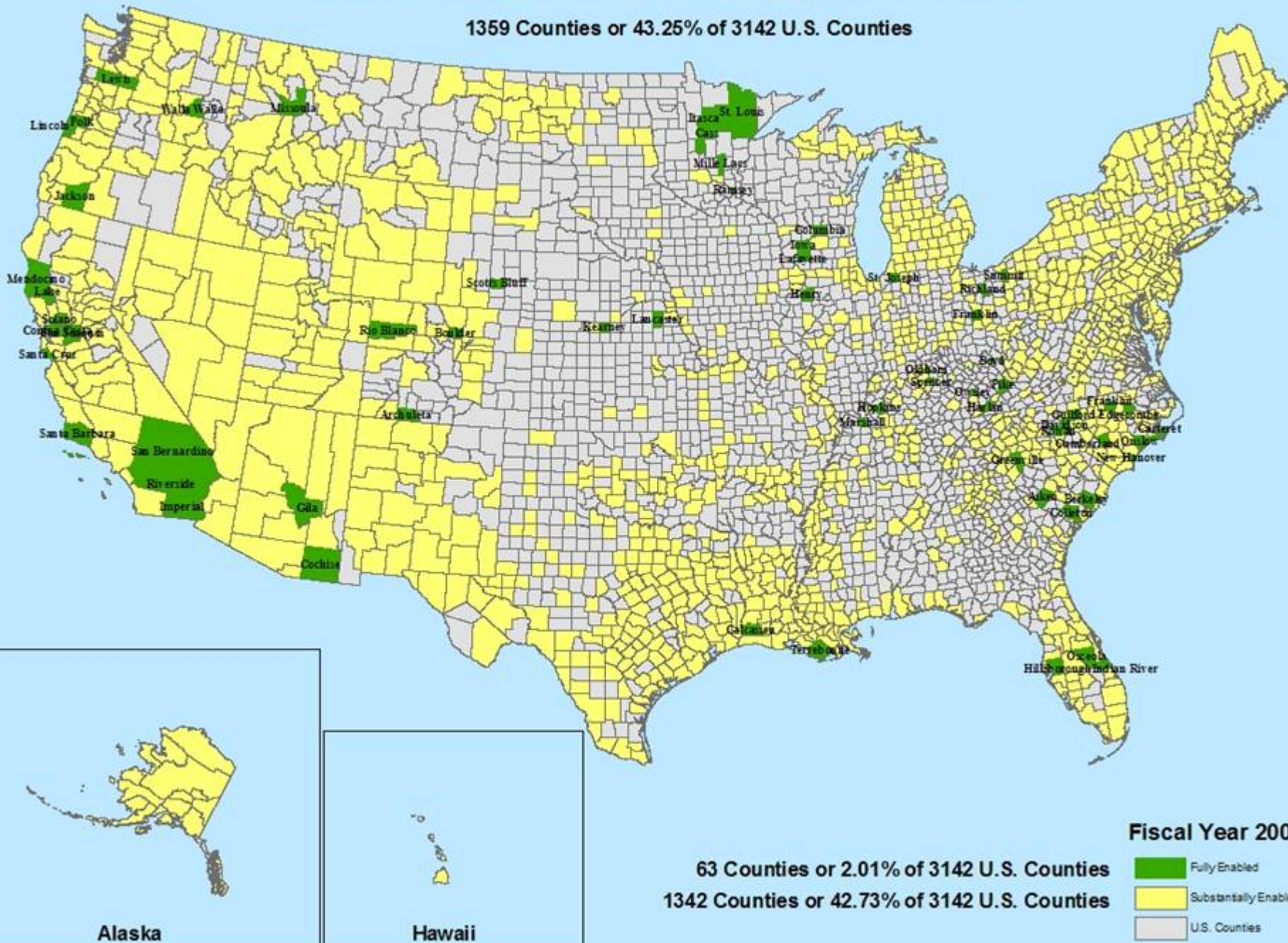
Results



National Oceanic and Atmospheric Administration

Fully or Substantially Enabled Counties - FY 2006

1359 Counties or 43.25% of 3142 U.S. Counties



GRPA Measure Targets

Ranking	FY 2007	FY 2008	FY 2009	FY 2010	FY 2011
Substantially Enabled	44%	52%	62%	62%	62%
Fully Enabled	5%	8%	13%	20%	30%
Total GPRA (Green and/or Yellow)	49%	60%	75%	82%	92%



Results from County Scorecard 2nd Distribution

3. What best describes your profession?

	Response Percent	Response Total
County Surveyor (non-NACS member)	34.9%	106
County Surveyor (NACS member)	6.6%	20
Local Government Representative	12.5%	38
Geodesist/Cartographer	2.3%	7
Other Land Surveyor/Engineer	12.8%	39
GIS/Mapping User	34.2%	104
Other (please specify)	9.2%	28






Results from County Scorecard 2nd Distribution

12. What is your overall satisfaction with NGS' Models and Tools?

	Response Percent	Response Total
Very Satisfied 	10.7%	19
Satisfied 	78%	138
Not Satisfied 	11.3%	20

21. What is your overall level of satisfaction with the products and services that NGS provides to your work?

	Response Percent	Response Total
Very Satisfied 	14.3%	23
Satisfied 	68.3%	110
Not Satisfied 	17.4%	28



Results from County Scorecard 2nd Distribution

	Very Satisfied	Satisfied	Not Satisfied	N/A
Aeronautical Photos and Data	4%	<u>24%</u>	9%	63%
CORS	14%	<u>45%</u>	12%	29%
Monumented Horizontal Control	12%	<u>55%</u>	20%	12%
Monumented Vertical Control	9%	<u>50%</u>	28%	13%
Geoid Models	9%	<u>38%</u>	5%	48%
GPS Orbital	6%	<u>34%</u>	3%	57%



Results from County Scorecard 2nd Distribution

15. Is there a Workshop/Forum listed that you have not attended but would like to attend in your area?

	Response Percent	Response Total
Height Modernization Forum	23.4%	29
Blue Booking	30.6%	38
Calibration Baselines	24.2%	30
CORS Usage	50%	62
Developing an Accurate GIS/LIS	37.9%	47
Development, Implementation and Future of NSRS	14.5%	18

18. Are you aware of the State Advisor/Coordinator Program?

	Response Percent	Response Total
Yes	55.8%	91
No	44.2%	72



Results from County Scorecard 2nd Distribution

County Scorecard Comments:

“I was not aware of many of the available items/programs available. It should help that I know the information is out there.”

“While updating multiple online datasheet submittals, I accidentally typed in the wrong County Code, and for the 10 or so monuments I recovered, they say the wrong county code on them. I know this was my error while typing, but maybe if a double check could be incorporated, it would solve this problem.”

“Have used NGS products/services very sparingly. I don't readily think of NGS as a resource.”

Comment on OPUS: “Great service. We need more CORS in central Idaho. Plate boundary commission?”



Next Steps

- Increase awareness of County Scorecard within and outside of NGS
 - Publicize results on the NGS website.
 - Make data readily available on NGS Intranet / Sharepoint site
- Update list of County Geodetic Representatives
- Provide feedback from 2nd Distribution to State Advisors
- Scrub the County Scorecard Database
- **Identify High Priority Counties to Target in FY 2007**
- **Incorporate results into management decisions**
 - Improve Products and Services
 - Targeted Workshops
- Meet with National Association of County Surveyors
- **Initiate 3rd Distribution of County Scorecard**
- Work with other partners on advancing this initiative
 - NACO and others



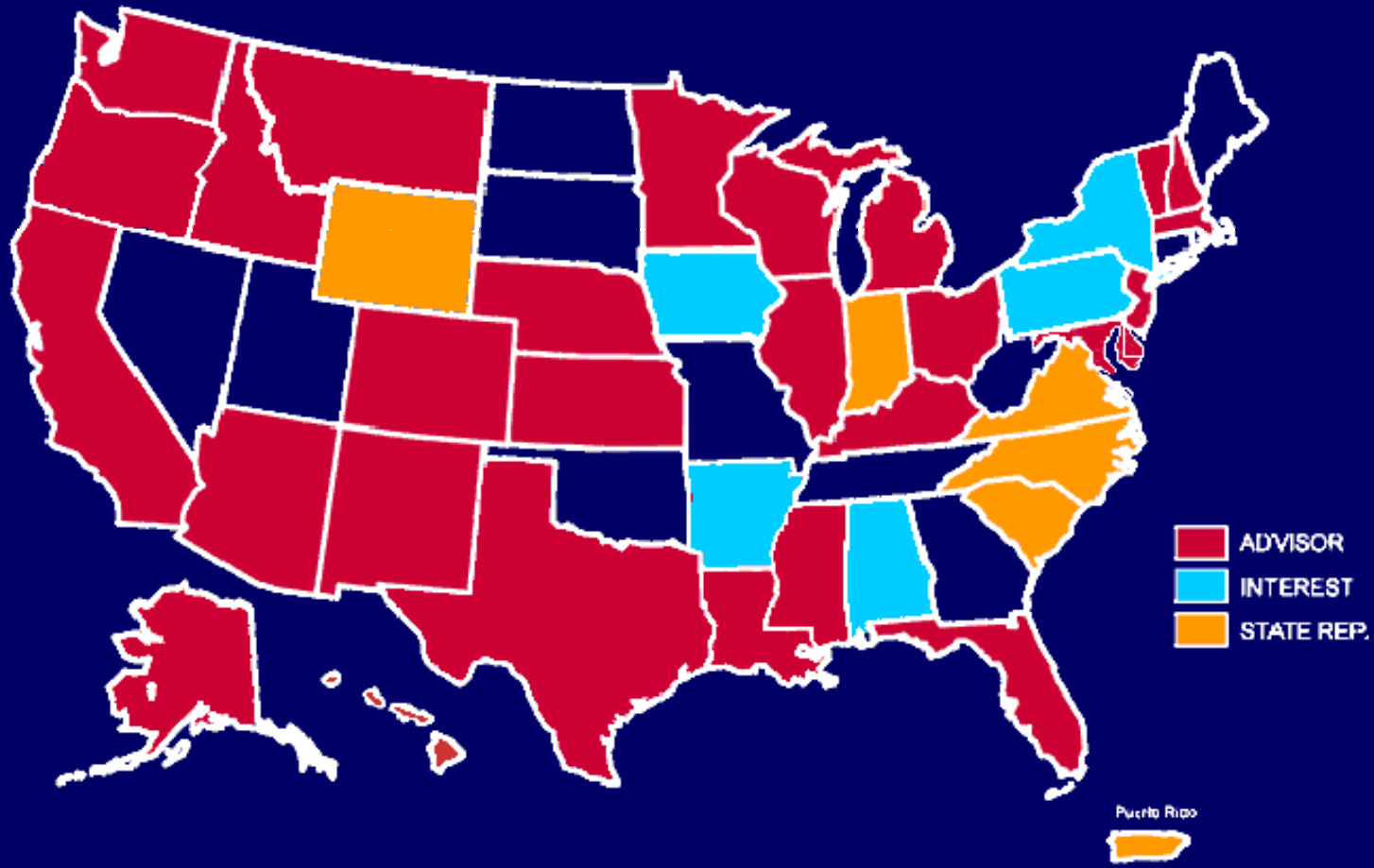
BACKGROUND SLIDES



National Oceanic and Atmospheric Administration

State Advisor Program

National Geodetic Survey State Advisors



Online Positioning User Service (OPUS)

- Users submit GPS data to NGS, where they are processed using NGS computers and software.
- The resulting precise positions are e-mailed back to the user.

