



# Montana Partners for Fish and Wildlife Conservation Planning



***Greg Neudecker & Jim Stutzman, MTPFW  
Sean Fields, HAPET, Josh Vest, IWJV  
David Naugle, UofM***



# Ten Step Conservation Focus Area Approach



- 1) Use geographical areas as foundation for planning
- 2) Identify with partners, priority species/surrogates for geographical areas
- 3) Biological Planning and Conservation Design



# Ten Step Conservation Focus Area Approach



- 4) Consult with partners on biological data
- 5) Identify over-lap in partner plans
- 6) Draft initial set of Conservation Focus Areas



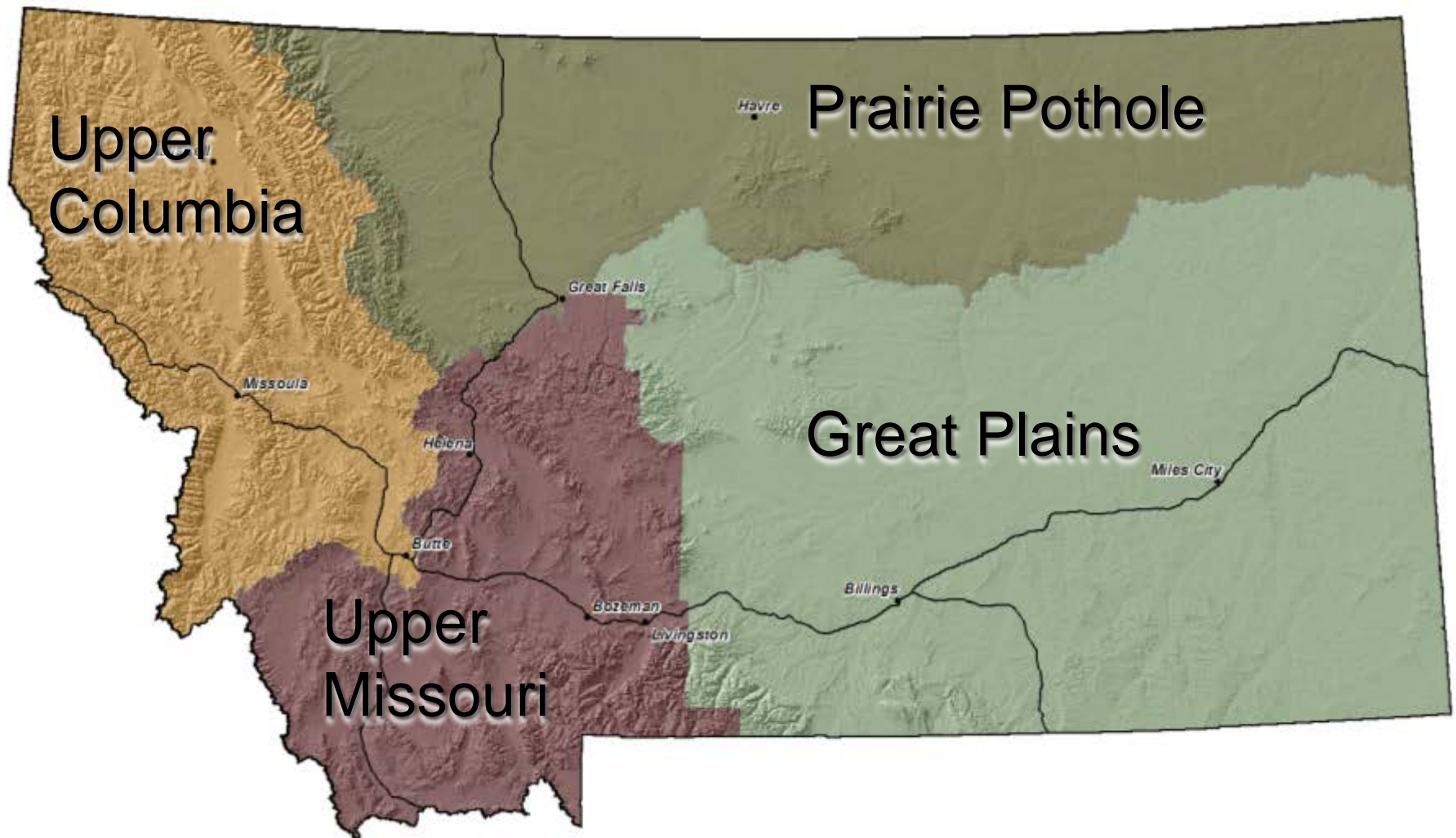
# Ten Step Conservation Focus Area Approach



- 7) Use landscape intactness and public/private patterns to compare draft CFAs
- 8) Assess existing community based conservation groups in draft CFAs
- 9) Evaluate realized and potential future threats of CFAs
- 10) Formally select final set of CFAs



# Montana Geographic Planning Areas





# Choosing and Using Focal Species to Fulfill Landscape-level Objectives



- Key stone
- Trend detectors
- Indicators
- Umbrellas
- Species of Concern
- Flagships

**Dr. Scott Mills**



The University of  
**Montana**



# Choosing and Using Focal Species to Fulfill Landscape-level Objectives



- Landscape species
- SHC data rich species
- Partners are actively monitoring
- Politically, socially & logistically attainable on private lands in MT

## **Four Criteria for Selection**



# Choosing and Using Focal Species to Fulfill Landscape-level Objectives



- Tier 1 (Primary Species):** A species that meets all four categories for prioritization.
- Tier 2 (Secondary Species):** A species that does not meet one of the four categories used for prioritization, or is a Tier 1 species for only a small segment of larger geographic area
- Tier 3 (Science Need):** A Landscape Species that lacks the necessary empirical data to apply the SHC Model for on-the-ground delivery within a geographic area.

## Geographically Tiered





# Choosing and Using Focal Species to Fulfill Landscape-level Objectives



	PRAIRIE POTHOLE	GREAT PLAINS	UPPER MISSOURI	UPPER COLUMBIA
<b>TIER 1</b>	Sage grouse	Sage grouse	Sage grouse	Bull trout
	Mallard		Arctic grayling	Grizzly bears
<b>TIER 2</b>	Piping plover	Pallid sturgeon	Trumpeter swan	Trumpeter Swan
	B.T. prairie dog	B.T. prairie dog		
	Grizzly bears			
	W.S. C. trout		W.S. C. trout	W.S.C. trout
	Bull trout			
<b>TIER 3</b>	L. B. curlew	L. B. curlew	L. B. curlew	L. B. curlew
	Mountain plover	Mountain plover	Grizzly bears	
	Mixed grass spp.**	Mixed grass spp.**	Y.S.C trout	
	Northern Pintail			

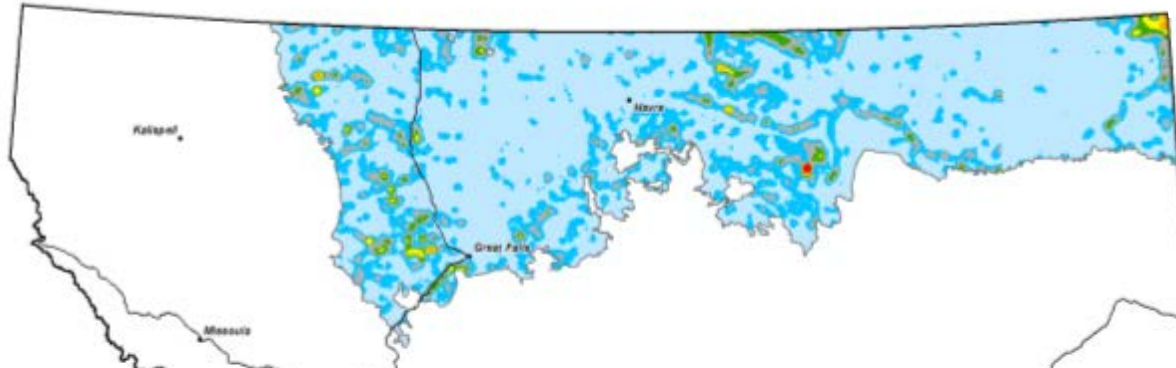
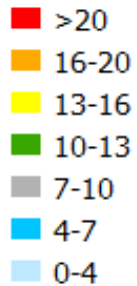
\*\* Sprague's Pipit, Baird's Sparrow, McCown's & Chestnut-collared Longspurs



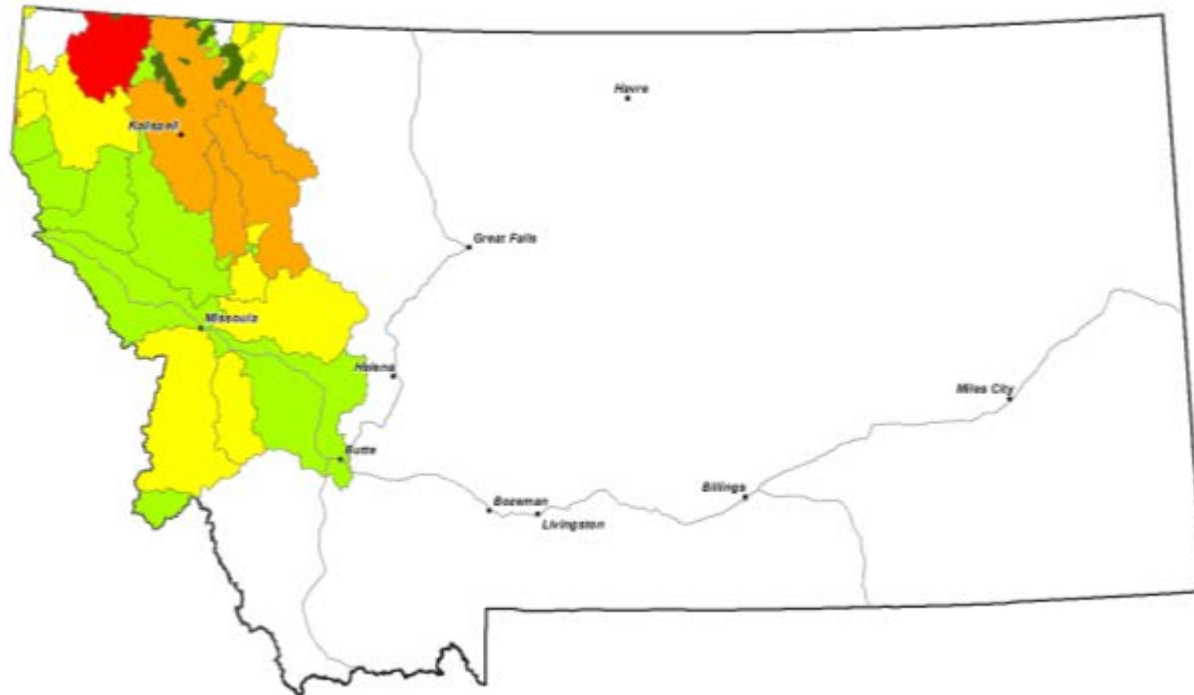
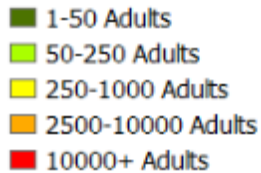
# Biological Planning and Conservation Design



## Mallard Pairs



## Bull Trout

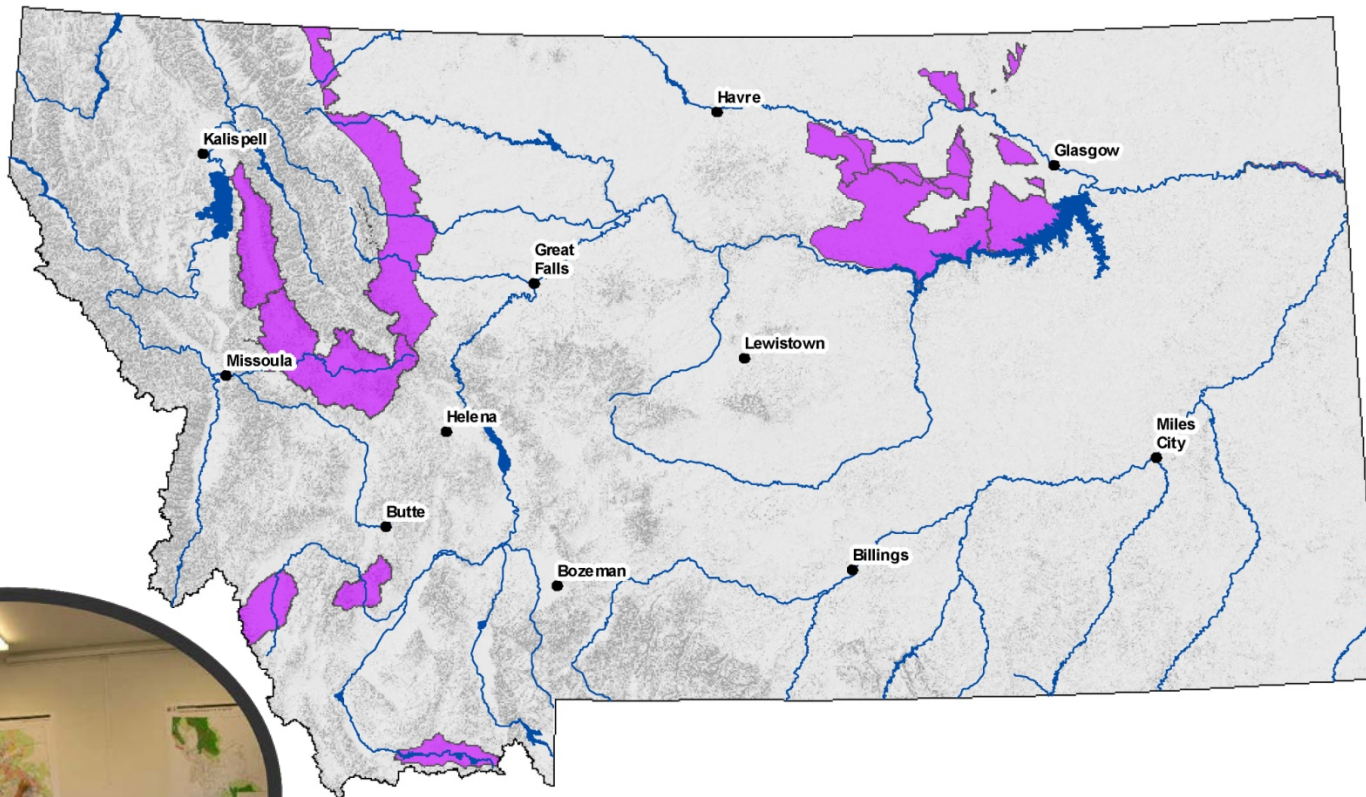




# Partners Conservation Focus Areas



Commonly Identified Conservation Areas

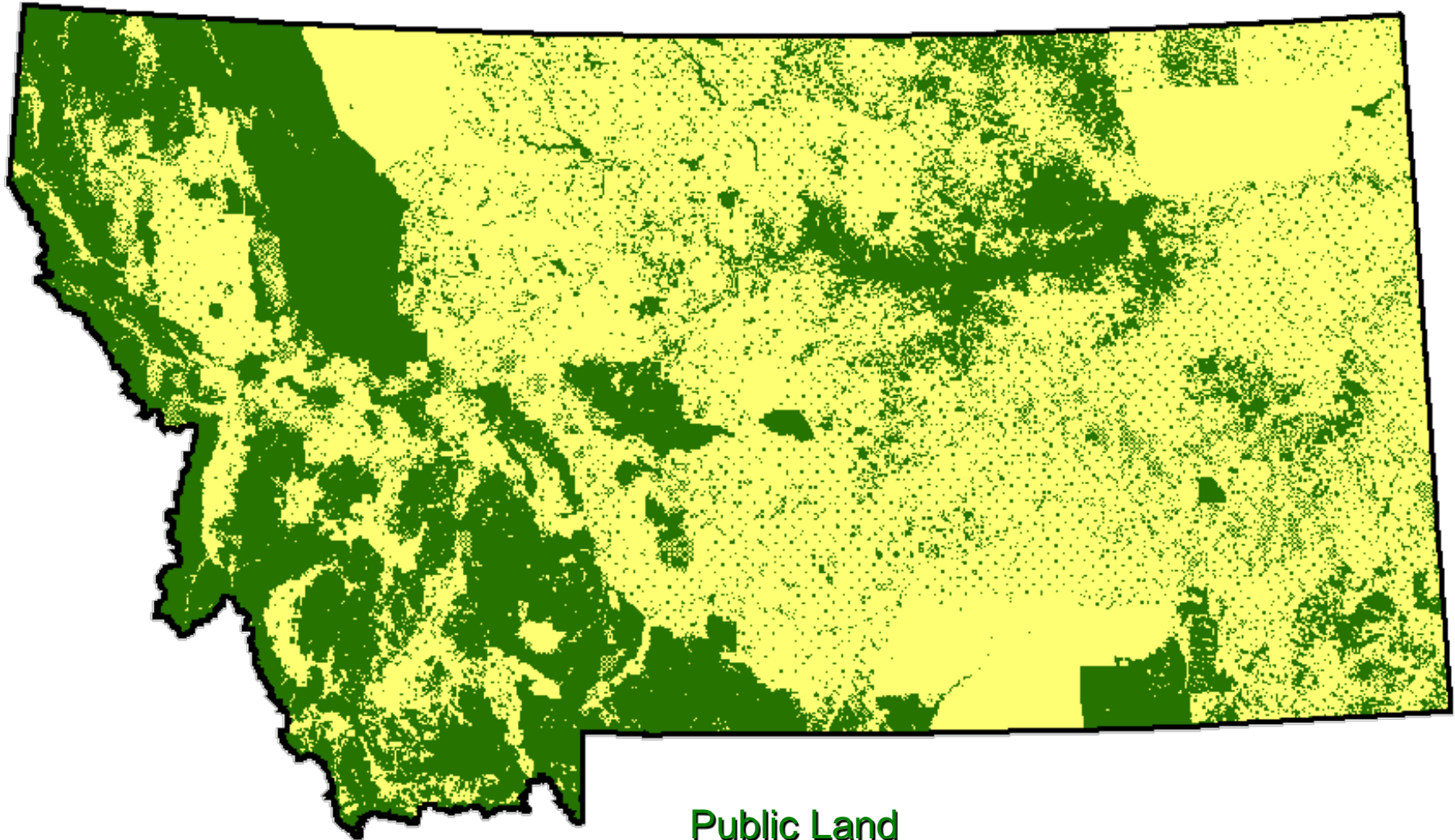


Intersection of Focus Areas includes:  
Montana Fish, Wildlife, and Parks CFWCS Tier One Focus Areas  
USFWS Conservation Focus Areas of the Great Divide  
Partners for Fish and Wildlife Conservation Focus Areas  
Nature Conservancy Priority Areas





# Landscape Intactness & Public/Private Patterns

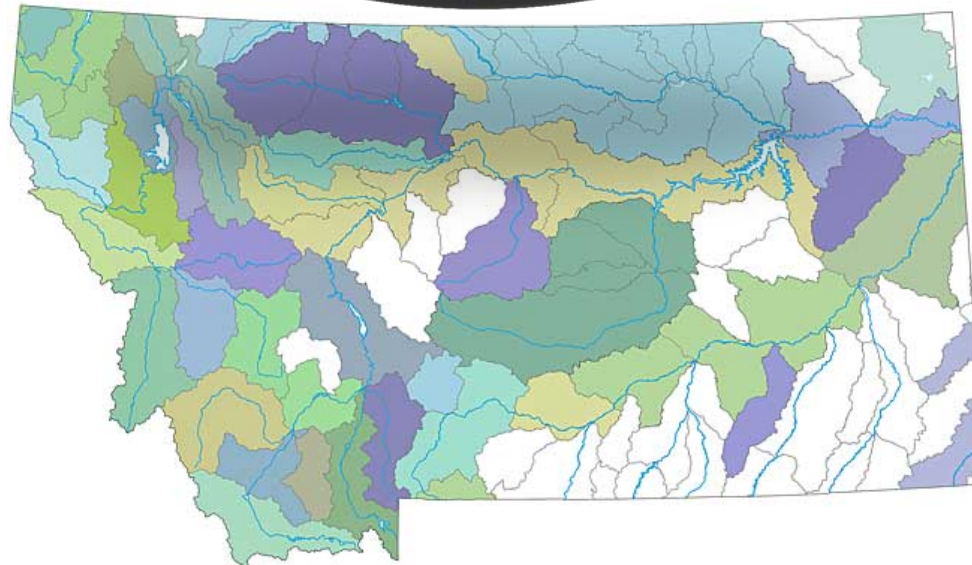


Public Land

Private Land (including Tribal Lands)

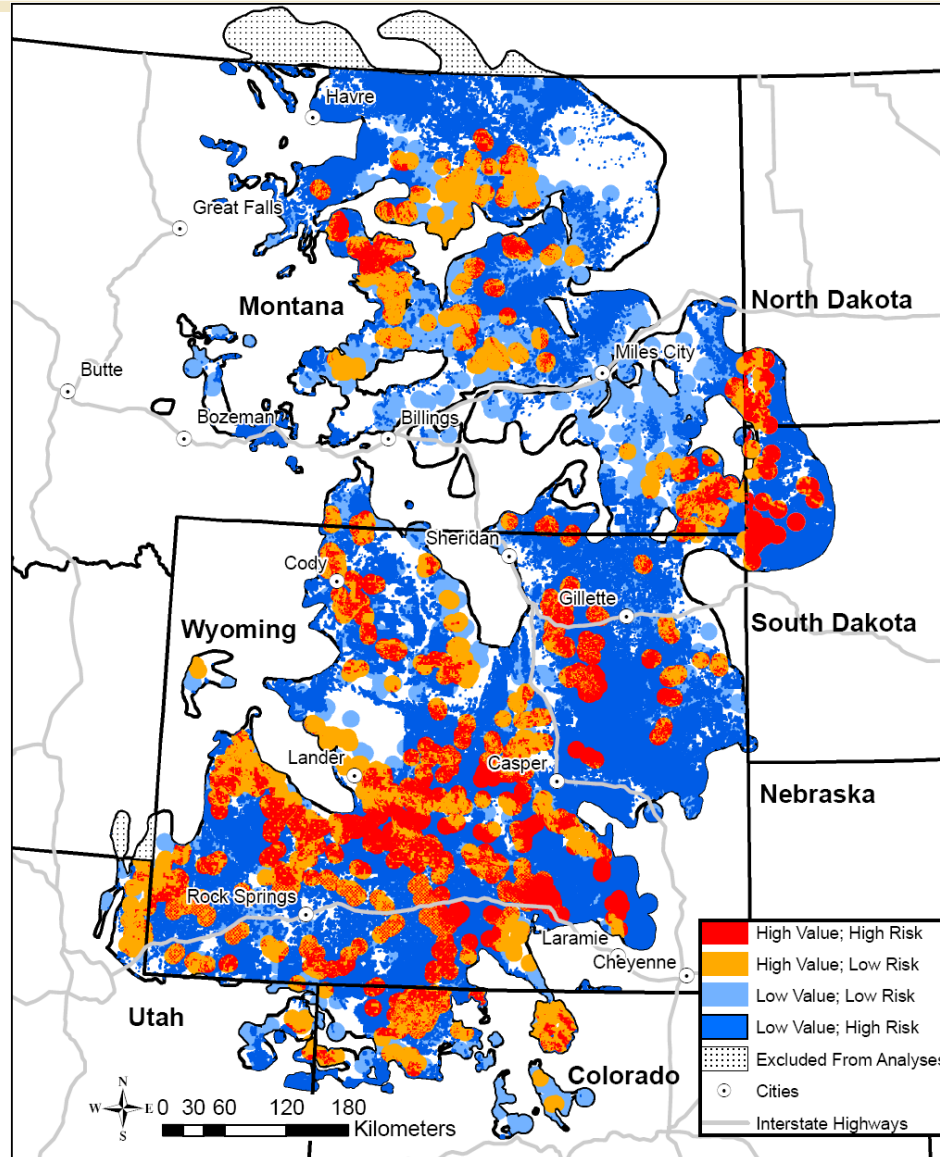


# Community Based Groups





# Threats




Overlay of Risks of energy development:

High Value; High Risk = 13% of distribution 

High Value; Low Risk = 17% of distribution 

Low Value; Low Risk = 19% of distribution 

Low Value; High Risk = 25% of distribution 

## SAGE GROUSE



# Montana Partners for Fish and Wildlife Conservation Focus Areas

