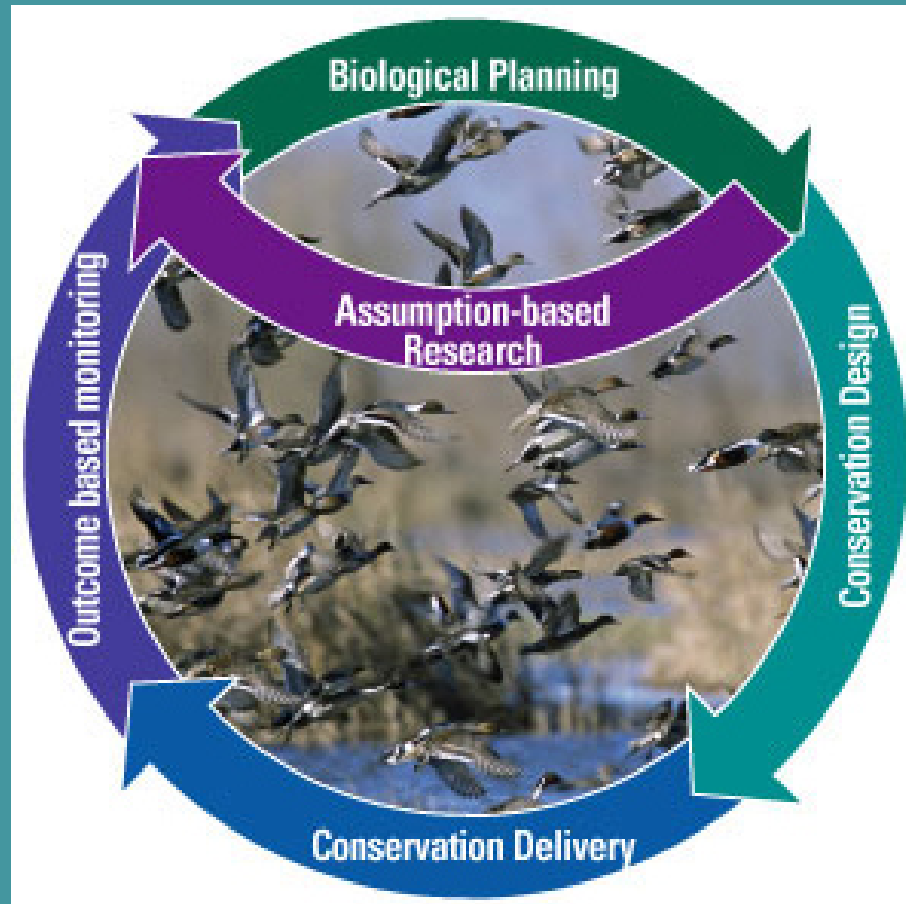


# Utilizing the Principles of Strategic Habitat Conservation in the Rocky Mountain Front Conservation Area

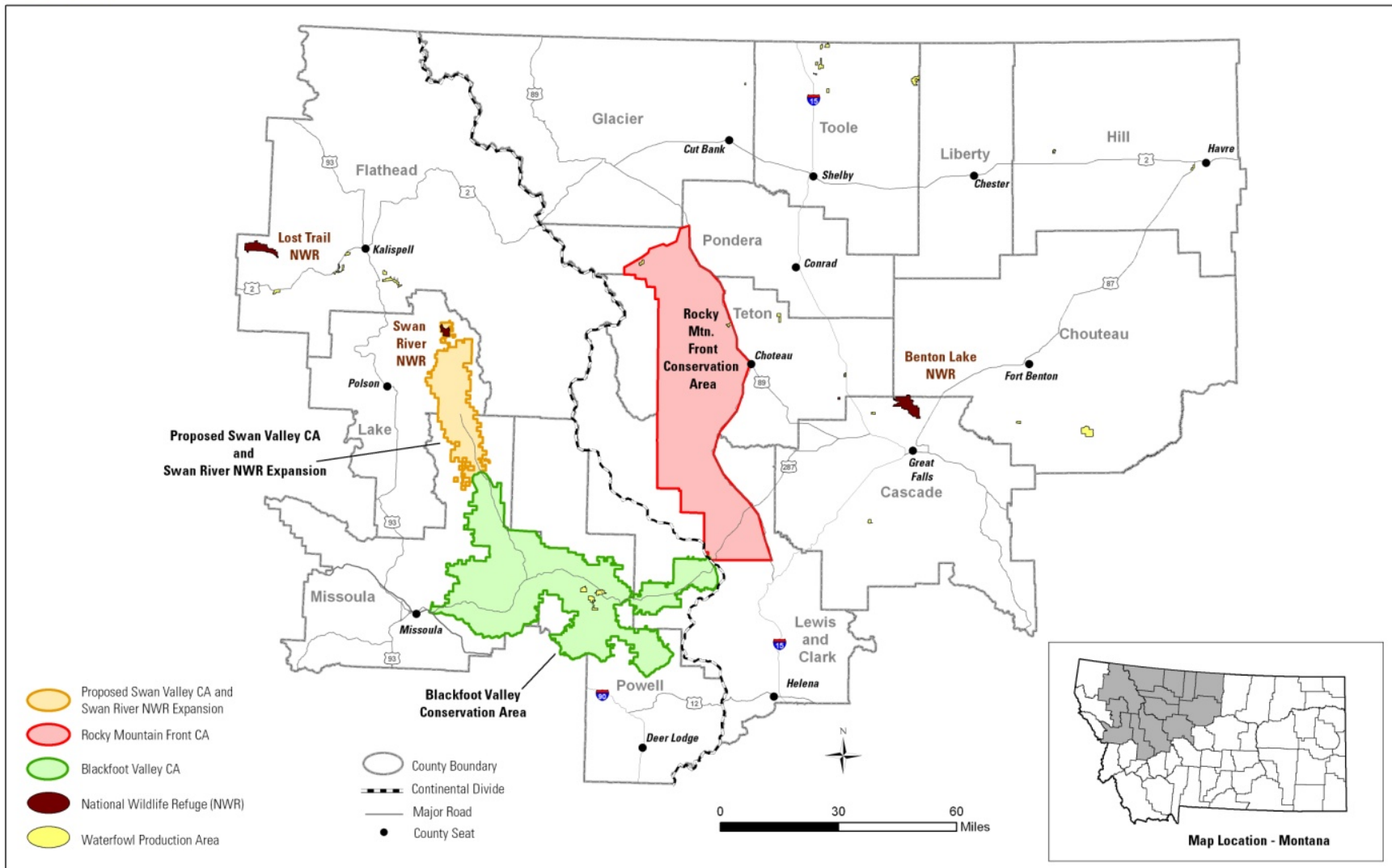




U.S. Fish & Wildlife Service

### Benton Lake National Wildlife Refuge Complex

Base Map



# SHC: Biological Planning

## *Focal Species*

Grizzly bear - a key focal species that may also captures the habitat needs of several of the other key trust species.



# SHC: Biological Planning

## ***Population Objectives for Grizzly Bear***

Bears in the RMF CA are part of the Northern Continental Divide Ecosystem (NCDE) recovery zone.

As a listed species, recovery objectives were already formulated.

Ten females with cubs inside Glacier National Park, and twelve females with cubs outside GNP over a running 6-year average, both inside the recovery zone, and within a surrounding 10-mile area... etc...

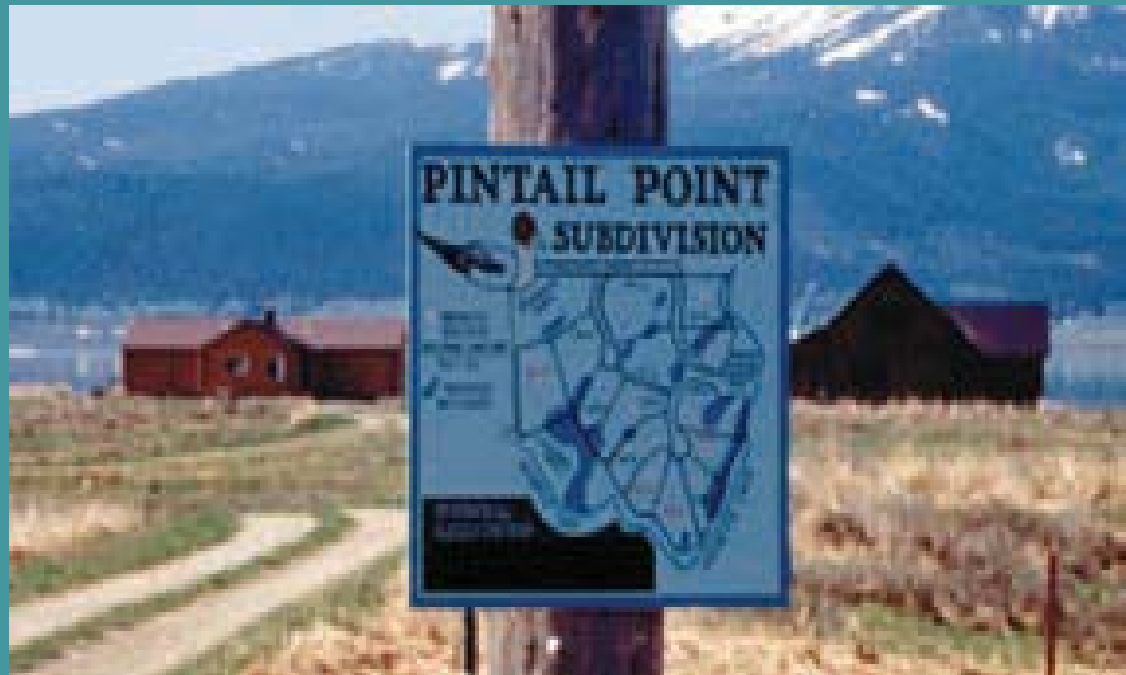
*Grizzly Bear Recovery  
Plan, USFWS 1993*



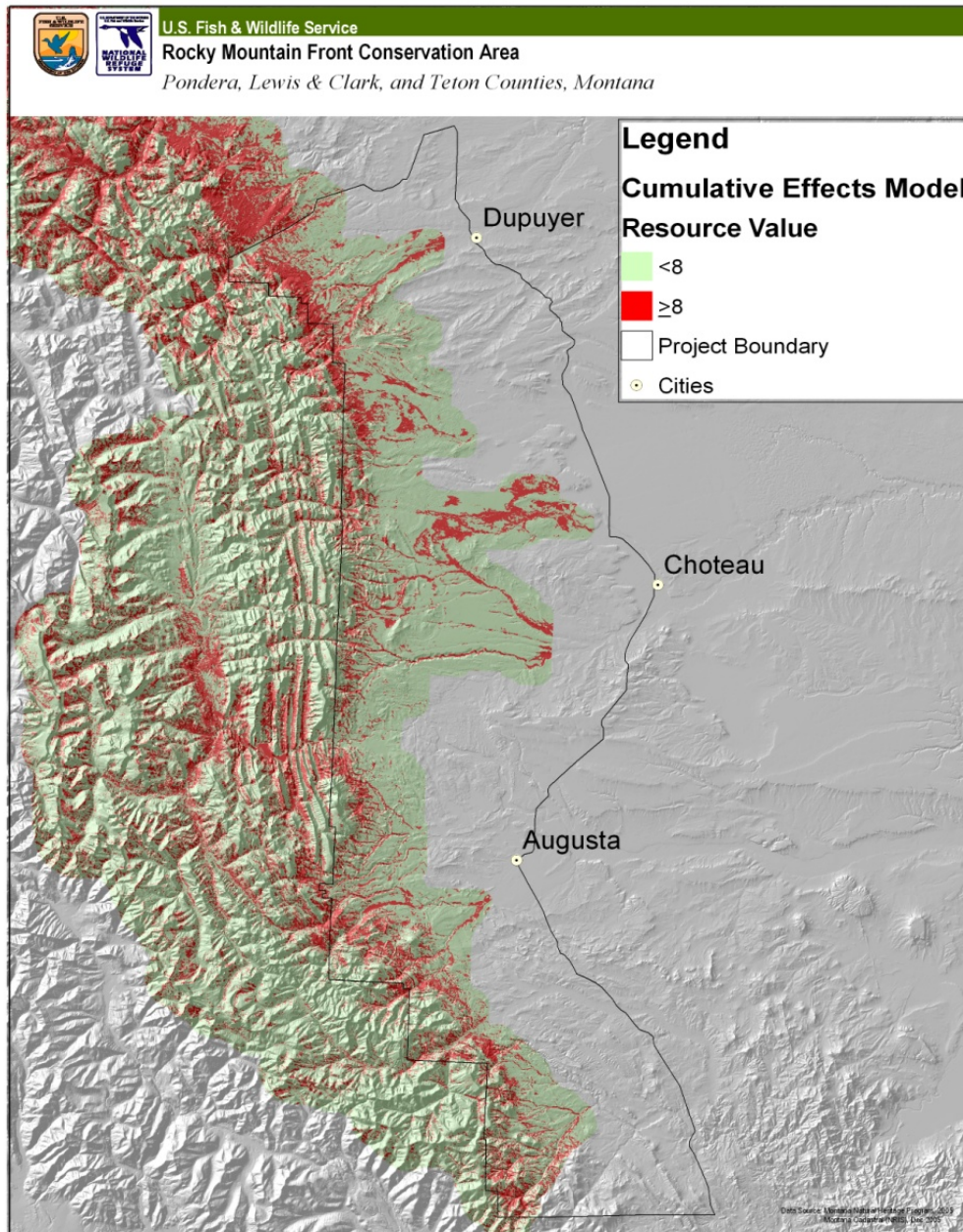
# SHC: Biological Planning

## *Limiting Factors*

Habitat development and habitat fragmentation are biggest threats. Both lead to an increase in human interactions → human-caused mortality



# SHC: Conservation Design



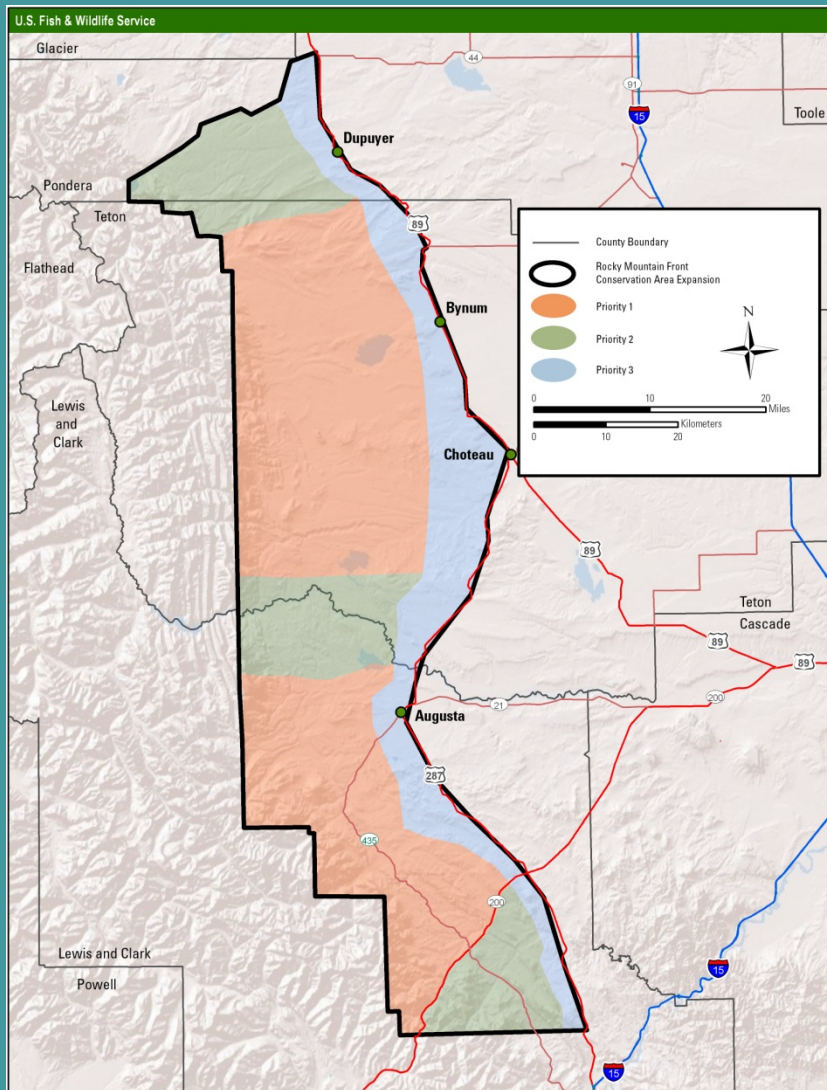


# SHC: Conservation Design

## *Formulation of Habitat Objectives*

- The CEM helped us target valuable habitats for protection.
- We could see the development and fragmentation occurring.
- We knew we needed to focus on:
  - protecting intact habitat and connectivity and
  - minimizing potential for fragmentation and human interaction

# SHC: Conservation Design



## *Priority Areas*

- We used GIS analysis to rank potential easement areas based on CEM habitat value, potential to preserve connectivity, and size of block.
- Even with the model, we cannot quantitatively determine how many grizzly bears can be added to the population or prevented from dying per acre of easements.



# SHC: Conservation Delivery

Working with our partners...

## A Recent 12,000 Acre Easement

|                              |                    |
|------------------------------|--------------------|
| LWCF                         | \$1,870,000        |
| Richard K. Mellon Foundation | \$1,630,000        |
| The Nature Conservancy       | \$1,000,000        |
| Private donation             | \$500,000          |
| <b>TOTAL</b>                 | <b>\$5,000,000</b> |

# SHC: Monitoring and Research

Also a partnership:

MTFWP, USGS -

population size/trend,  
distribution, linkage  
areas, mortality and  
survivorship

Great Northern LCC -

grizzly bears as a focal  
species



# Scaling Up to a Larger Landscape



U.S. Fish & Wildlife Service

Benton Lake National Wildlife Refuge Complex

Base Map

