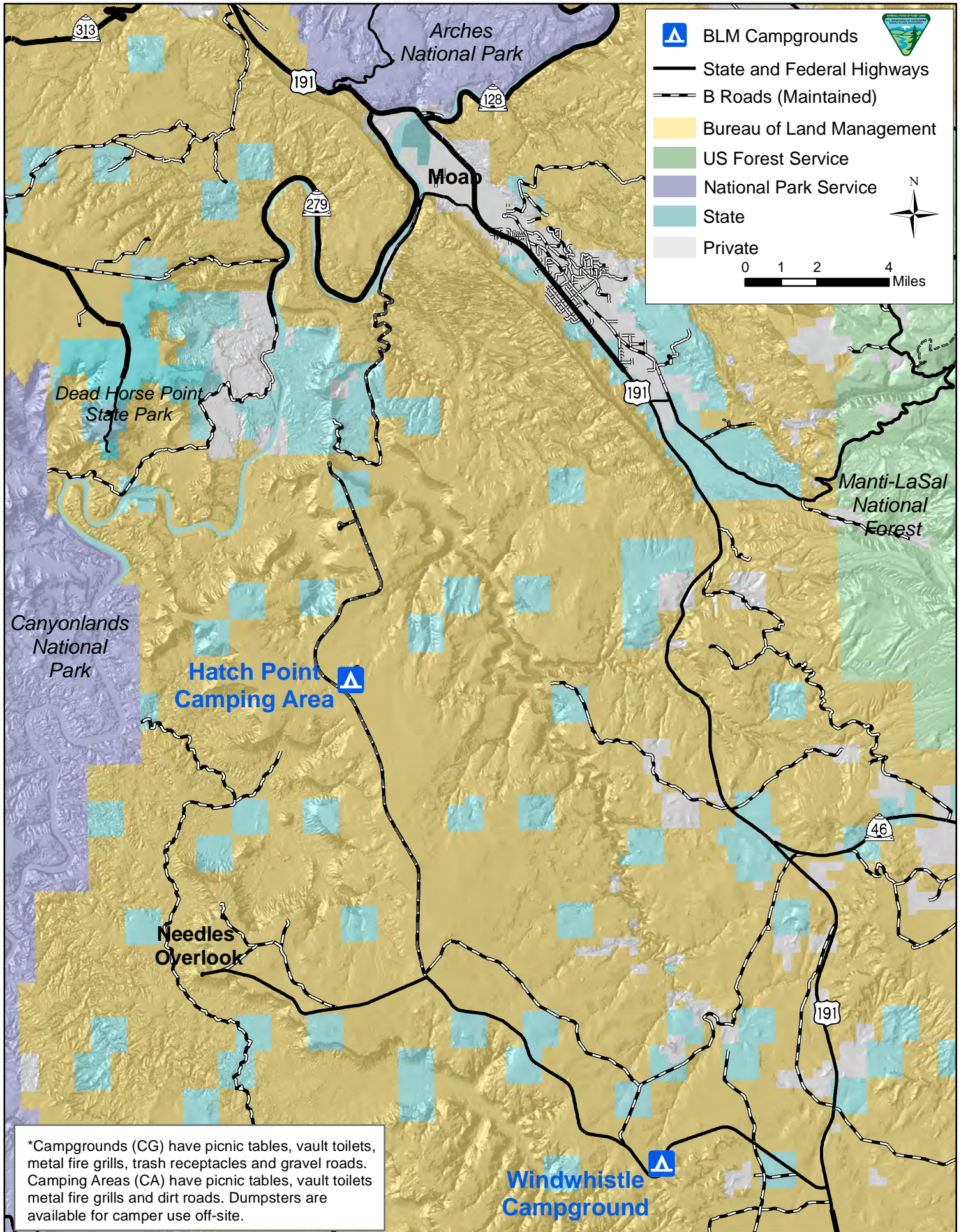










# Windwhistle and Hatch Point Campgrounds



-  BLM Campgrounds
-  State and Federal Highways
-  B Roads (Maintained)
-  Bureau of Land Management
-  US Forest Service
-  National Park Service
-  State
-  Private

0 1 2 4 Miles

\*Campgrounds (CG) have picnic tables, vault toilets, metal fire grills, trash receptacles and gravel roads. Camping Areas (CA) have picnic tables, vault toilets metal fire grills and dirt roads. Dumpsters are available for camper use off-site.