

Indian and Native American Adult Program

www.doleta.gov/dinap

Analysis

The program met two of the three performance goals:

- The Entered Employment Rate was the exception; at 62.6 percent, the result was .04 percentage points lower than the same period last year and was slightly less (.03 percent) than this year's target of 62.9 percent.
- The Employment Retention Rate was 76.2 percent, about six percentage points lower than last year but three percentage points above this year's target.
- The Average Earnings result was substantially higher this quarter: \$9,780, compared to \$6,816 a year ago, exceeding the goal by \$811.

Program Performance

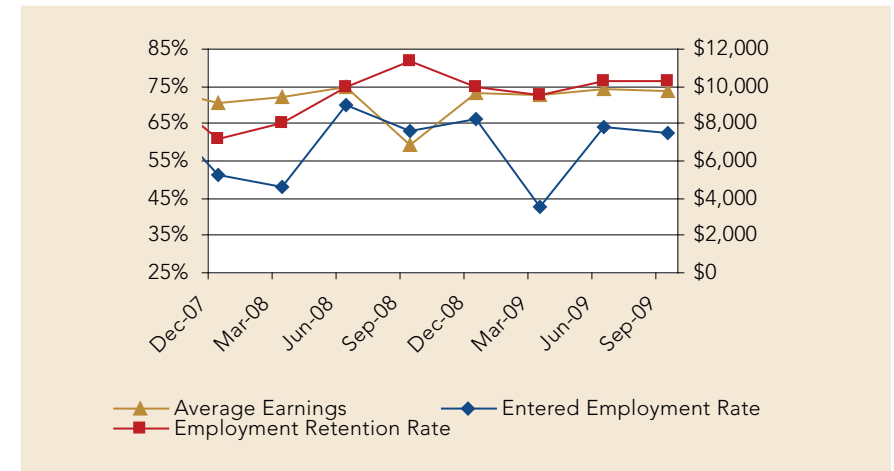
Performance Measure	Four Quarters Ending 9/30/08 ¹	Four Quarters Ending 9/30/09 ¹
Entered Employment Rate	63%	62.6%
Employment Retention Rate	82%	76.2%
Average Earnings	\$6,816	\$9,780

¹ Cumulative four-quarter program outcomes for the program lag by one quarter due to the lag in matching participant records with unemployment insurance wage records through the Wage Record Interchange System. Therefore, the information provided here is based on the cohort from the previous quarter.

Program Description

ETA's Indian and Native American Program provides employment and training grants to Indian tribes, nonprofit tribal organizations, Alaska Native entities, and Native Hawaiian organizations with comprehensive employment and training services designed to increase the ability of program participants to compete in the new global economy and promote the economic and social development of Indian, Alaska Native, and Native Hawaiian communities.

Performance in the Past Eight Quarters



Program Highlights

The reporting of individual grantee performance has improved because individual participant records are being matched with unemployment insurance wage records to verify performance outcomes. All three performance measures have shown a marked increase since the enhancement was made three quarters ago.