



Northeast (NE) Multispecies Information Sheet Closed Area Regulations



This summary provides a broad overview of restrictions and requirements; it is not a substitute for the regulations. You must read the regulations in conjunction with this information sheet to fully understand how this fishery is managed. This information sheet will be updated when regulations are revised. The regulations summarized here may be found at 50 CFR 648.80 and § 648.81.

This information sheet summarizes the NE multispecies regulations pertaining to:

| | |
|--|------|
| Transiting Regulations..... | 1 |
| Gulf of Maine (GOM) Cod Protection Closures..... | 1-4 |
| Georges Bank (GB) Seasonal Closure..... | 5 |
| Year-Round Closed Areas..... | 6-7 |
| Essential Fish Habitat (EFH) Closed Areas..... | 8-9 |
| Restricted Gear Areas (RGA)..... | 9-14 |
| GOM Whaleback Spawning Protection Area..... | 15 |

TRANSITING REGULATIONS

Transiting means traveling from a point outside the closed area to another open area, or to port, or from port to an area outside the closed area. A vessel may transit Closed Area (CA) I, the Nantucket Lightship Closed Area (NLCA), the Cashes Ledge Closed Area, the Western GOM Closed Area, the GOM Cod Protection Closures, the GB Seasonal Closure Area, the EFH Closure Areas, and the GOM Whaleback Cod Spawning Protection Area, provided that its gear is stowed in accordance with the regulations.

A vessel may transit CA II for valid and compelling safety reasons or when lawfully fishing in the U.S./Canada Management Area, provided fishing gear is stored in accordance with the regulations.

For more information, please see the gear stowage information sheet at:

www.greateratlantic.fisheries.noaa.gov/regs/infodocs/gearstowage.pdf.

GOM COD PROTECTION CLOSURES

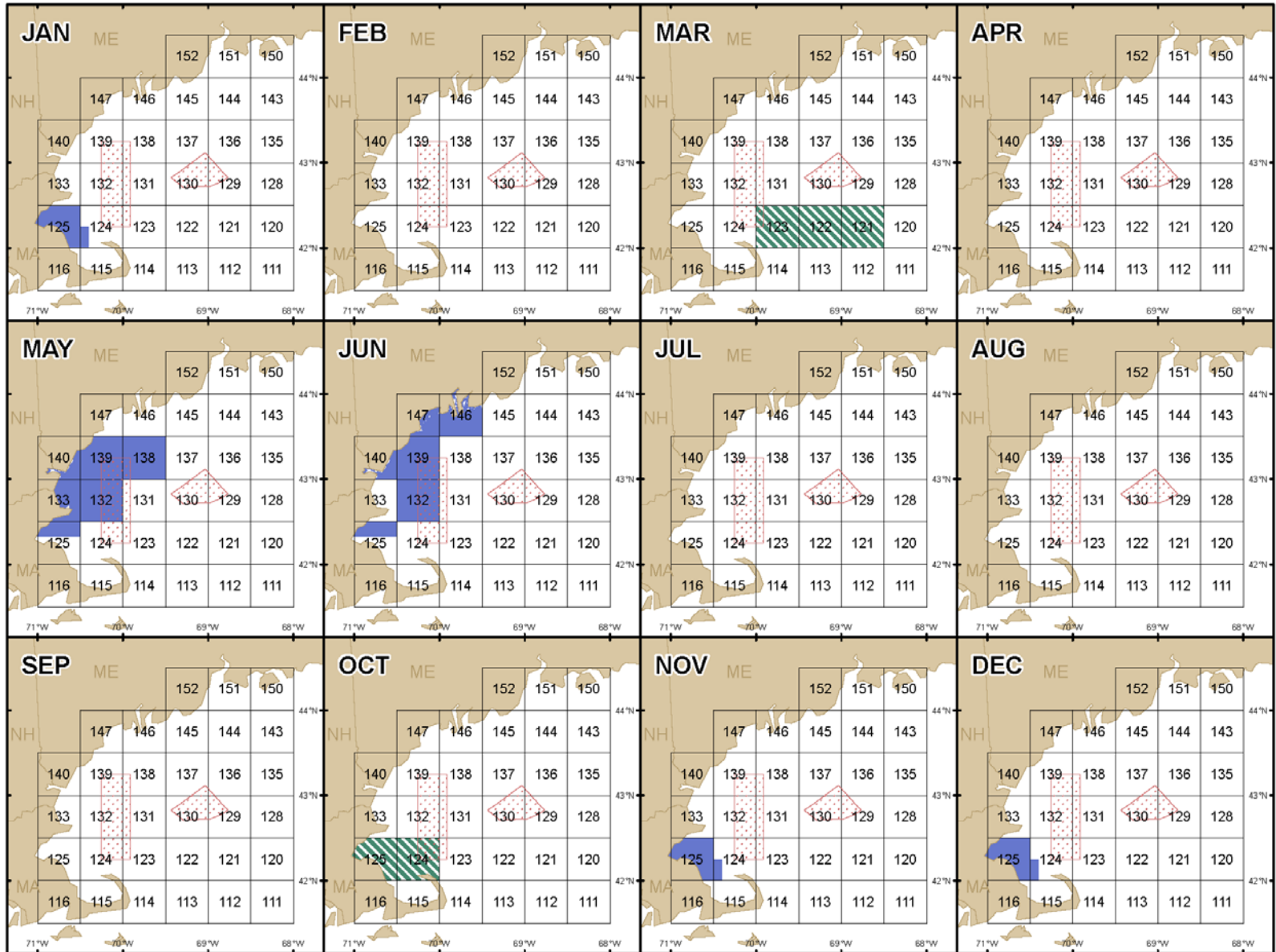
The GOM Cod Protection Closures depicted below are closed to all fishing vessels with the following exemptions: Vessels that do not have a Federal NE multispecies permit and are fishing exclusively in state waters; charter and party vessels*; recreational vessels; vessels fishing with exempted gears (spears, rakes, diving gear, cast nets, tongs, harpoons, weirs, dip nets, stop nets, pound nets, pots and traps, purse seines, surf clam/quahog dredge gear, pelagic hook and line, pelagic longlines, single pelagic gillnets, shrimp trawls (with properly configured grates)); vessels participating in the mid-water trawl exempted fishery; vessels using sea scallop dredge gear when under a scallop day-at-sea (DAS), or vessels lawfully in a scallop dredge exemption area; and vessels participating in the Raised Footrope Trawl Exempted Whiting Fishery.

*Charter and party vessels may fish in the GOM Cod Protection Closures provided they have a Letter of Authorization (LOA) from the Regional Administrator to enter or fish in these areas (additional requirements also apply). An LOA may be obtained by calling the Permit Office at 978-281-9370.

This information sheet was last updated on April 29, 2016

GOM Cod Protection Closures

- 30 Minute Square
- Common Pool and Sectors Closure
- Groundfish Closure
- Common Pool Closure (DAS, HB, & Small Vessel only)



Sector and Common Pool Closures

GOM Cod Protection Closure I

[May 1-May 31]

| Point | N. latitude | W. longitude |
|--------|-------------|-----------------------------------|
| CPCI 1 | 43°30'N | (¹) |
| CPCI 2 | 43°30'N | 69°30'W |
| CPCI 3 | 43°00'N | 69°30'W |
| CPCI 4 | 43°00'N | 70°00'W |
| CPCI 5 | 42°30'N | 70°00'W |
| CPCI 6 | 42°30'N | 70°30'W |
| CPCI 7 | 42°20'N | 70°30'W |
| CPCI 8 | 42°20'N | (²) (³) |
| CPCI 1 | 43°30'N | (¹) (³) |

¹ The intersection of 43°30'N latitude and the coastline of Maine

² The intersection of 42°20'N latitude and the coastline of Massachusetts

³ From Point 8 back to Point 1 following the coastline of the United States

GOM Cod Protection Closure II

[June 1-June 30]

| Point | N. latitude | W. longitude |
|----------|------------------|-----------------------------------|
| CPCII 1 | (¹) | 69°30'W |
| CPCII 2 | 43°30'N | 69°30'W |
| CPCII 3 | 43°30'N | 70°00'W |
| CPCII 4 | 42°30'N | 70°00'W |
| CPCII 5 | 42°30'N | 70°30'W |
| CPCII 6 | 42°20'N | 70°30'W |
| CPCII 7 | 42°20'N | (²) (³) |
| CPCII 8 | 42°30'N | (⁴) (³) |
| CPCII 9 | 42°30'N | 70°30'W |
| CPCII 10 | 43°00'N | 70°30'W |
| CPCII 11 | 43°00'N | (⁵) (⁶) |
| CPCII 1 | (¹) | 69°30'W (⁶) |

¹ The intersection of 69°30'W longitude and the coastline of Maine

² The intersection of 42°20'N latitude and the coastline of Massachusetts

³ From Point 7 to Point 8 following the coastline of Massachusetts

⁴ The intersection of 42°30'N latitude and the coastline of Massachusetts

⁵ The intersection of 43°00'N latitude and the coastline of New Hampshire

⁶ From Point 11 back to Point 1 following the coastlines of New Hampshire and Maine

GOM Cod Protection Closure III

[November 1-January 31]

| Point | N. latitude | W. longitude |
|----------|-------------|-----------------------------------|
| CPCIII 1 | 42°30'N | (¹) |
| CPCIII 2 | 42°30'N | 70°30'W |
| CPCIII 3 | 42°15'N | 70°30'W |
| CPCIII 4 | 42°15'N | 70°24'W |
| CPCIII 5 | 42°00'N | 70°24'W |
| CPCIII 6 | 42°00'N | (²) (³) |
| CPCIII 1 | 42°30'N | (¹) (³) |

¹ The intersection of 42°30'N latitude and the Massachusetts coastline

² The intersection of 42°00'N latitude and the mainland Massachusetts coastline at Kingston, MA

³ From Point 6 back to Point 1 following the coastline of Massachusetts

Common Pool Closures

(includes DAS, HB, and Small Vessel Category Vessels, Excludes Sector Vessels)

GOM Cod Protection Closure IV

[October 1-October 31]

| Point | N. latitude | W. longitude |
|--------------|--------------------|-----------------------------------|
| CPCIV 1 | 42°30'N | (¹) |
| CPCIV 2 | 42°30'N | 70°00'W |
| CPCIV 3 | 42°00'N | 70°00'W |
| CPCIV 4 | 42°00'N | (²) (³) |
| CPCIV 1 | 42°30'N | (¹) (³) |

¹ The intersection of 42°30'N latitude and the Massachusetts coastline

² The intersection of 42°00'N latitude and the mainland Massachusetts coastline at Kingston, MA

³ From Point 4 back to Point 1 following the coastline of Massachusetts

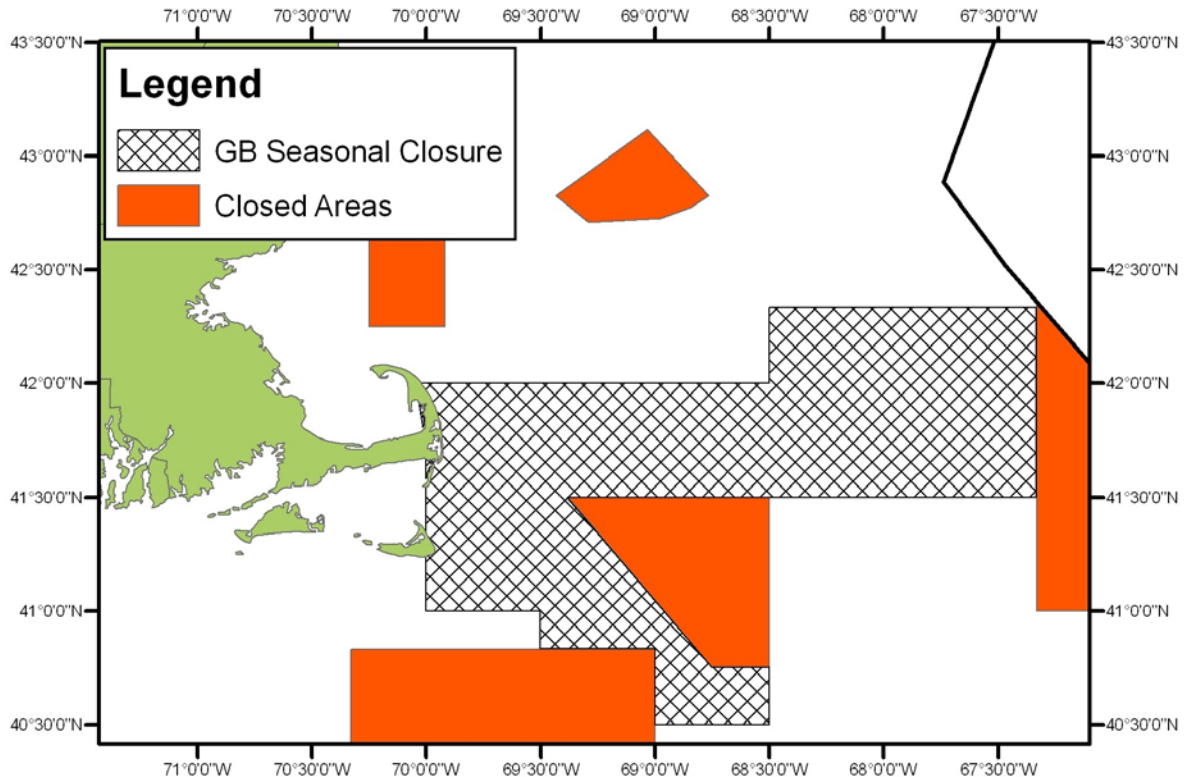
GOM Cod Protection Closure V

[March 1- March 31]

| Point | N. latitude | W. longitude |
|--------------|--------------------|---------------------|
| CPCV 1 | 42°30'N | 70°00'W |
| CPCV 2 | 42°30'N | 68°30'W |
| CPCV 3 | 42°00'N | 68°30'W |
| CPCV 4 | 42°00'N | 70°00'W |
| CPCV 1 | 42°30'N | 70°00'W |

GEORGES BANK (GB) SEASONAL CLOSURE AREA

The GB Seasonal Closure Area is closed from May 1 to May 31 to all fishing vessels with the following exemptions: Sector vessels; vessels fishing under a Handgear A or Handgear B permit in the common pool; vessels that do not have a Federal NE multispecies permit and are fishing exclusively in state waters; charter and party vessels; recreational vessels; vessels fishing with spears, rakes, diving gear, cast nets, tongs, harpoons, weirs, dip nets, stop nets, pound nets, pots and traps, purse seines, mid-water trawls, surf clam/quahog dredge gear, pelagic hook and line, pelagic longlines, single pelagic gillnets, shrimp trawls (with properly configured grates); and vessels using sea scallop dredge gear when under a scallop day-at-sea (DAS), or lawfully in a scallop dredge exemption area, provided that the vessel uses a 10-inch or greater twine top and complies with other applicable NE multispecies possession limits.



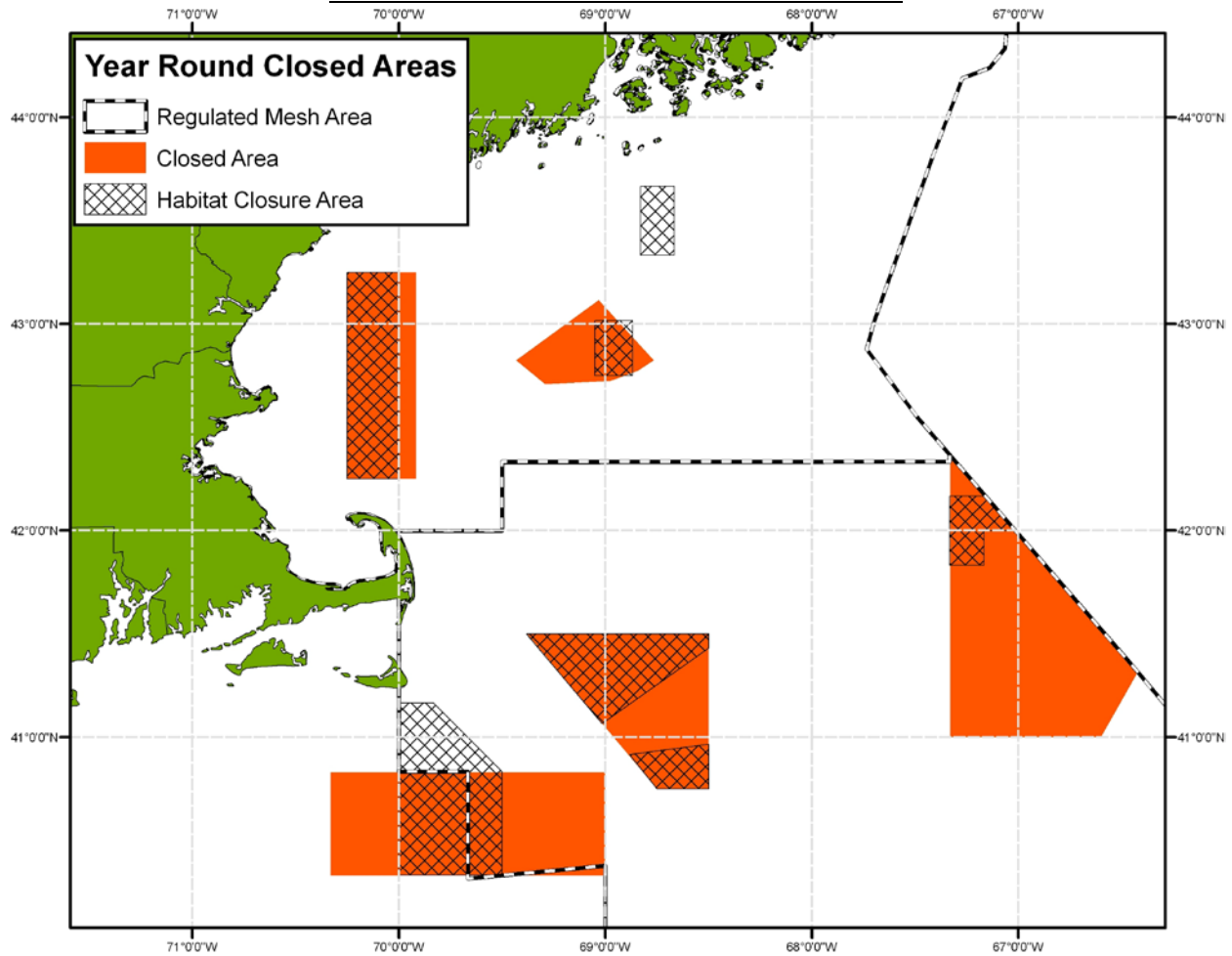
The GB Seasonal Closure Area is defined by straight lines connecting the following points in the order stated:

GB Seasonal Closure Area

| Point | N. Lat. | W. Long. |
|-------|---------|----------|
| GB1 | 42° 00' | (1) |
| GB2 | 42° 00' | 68° 30' |
| GB3 | 42° 20' | 68° 30' |
| GB4 | 42° 20' | 67° 20' |
| GB5 | 41° 30' | 67° 20' |
| CL1 | 41° 30' | 69° 23' |
| CL2 | 40° 45' | 68° 45' |
| CL3 | 40° 45' | 68° 30' |
| GB6 | 40° 30' | 68° 30' |
| GB7 | 40° 30' | 69° 00' |
| G10 | 40° 50' | 69° 00' |
| GB8 | 40° 50' | 69° 30' |
| GB9 | 41° 00' | 69° 30' |
| GB10 | 41° 00' | 70° 00' |
| G12 | (1) | 70° 00' |

(1) Northward to its intersection with the shoreline of Mainland Massachusetts

YEAR-ROUND GROUNDFISH CLOSED AREAS



WESTERN GOM AND CASHES LEDGE

The Western GOM and Cashes Ledge Closure Areas depicted above are closed year-round to all fishing vessels, with the following exemptions: Charter and party* or recreational vessels; vessels fishing with exempted gears (spears, rakes, diving gear, cast nets, tongs, harpoons, weirs, dip nets, stop nets, pound nets, pots and traps, purse seines, surf clam/ quahog dredge gear, pelagic hook and line, pelagic longlines, single pelagic gillnets, and shrimp trawls (with properly configured grates)); and vessels participating in the mid-water trawl exempted fishery.

*Charter and party vessels may fish in the Western GOM and Cashes Ledge Closure Areas provided they have a Letter of Authorization (LOA) from the Regional Administrator to enter or fish in these areas (additional requirements also apply). An LOA may be obtained by calling the Permit Office at 978-281-9370.

The Western GOM Closure Area and the Cashes Ledge Closure Area, respectively, are defined by straight lines connecting the following points in the order stated:

Western GOM Closure Area

| Point | N. Lat. | W. Long. |
|-------|---------|----------|
| WGM1 | 42° 15' | 70° 15' |
| WGM2 | 42° 15' | 69° 55' |
| WGM3 | 43° 15' | 69° 55' |
| WGM4 | 43° 15' | 70° 15' |
| WGM1 | 42° 15' | 70° 15' |

Cashes Ledge Closure Area

| Point | N. Lat. | W. Long. |
|-------|-----------|-----------|
| CL1 | 43° 07' | 69° 02' |
| CL2 | 42° 49.5' | 68° 46' |
| CL3 | 42° 46.5' | 68° 50.5' |
| CL4 | 42° 43.5' | 68° 58.5' |
| CL5 | 42° 42.5' | 69° 17.5' |
| CL6 | 42° 49.5' | 69° 26' |
| CL1 | 43° 07' | 69° 02' |

CA I, CA II, AND NLCA

The following applies to the CA I, CA II, and the NLCA. Unless further restricted under the EFH Closure areas, these areas are closed year-round to all fishing vessels, with the following exceptions: Vessels fishing with or using pot gear designed to take lobsters or hagfish, pelagic hook and line gear, pelagic longline gear, harpoon gear, tuna purse seine, pelagic mid-water trawl gear*, and tuna purse seine gear, provided no regulated species are kept and no other gear capable of catching NE multispecies is on board. Additional area exemptions are identified below under the respective closures.

*Vessels using mid-water trawl gear must have on board a LOA issued by the Regional Administrator. Mid-water trawl vessels are issued a LOA for a minimum of 7 days. The vessel can be issued LOAs for the midwater trawl exempted fishery and the purse seine exempted fishery at the same time. An LOA may be obtained by calling the Permit Office at 978-281-9370.

CA I – In addition to the exemptions summarized in the first paragraph of this section the following vessels are also exempt from CA I: Vessels participating in a NE multispecies Special Access Program (SAP) and vessels fishing for scallops in the CA I Access Area. CA I is defined by straight lines connecting the following points in the order stated:

| Point | N. Lat. | W. Long. |
|-------|---------|----------|
| C11 | 41° 30' | 69° 23' |
| C12 | 40° 45' | 68° 45' |
| C13 | 40° 45' | 68° 30' |
| C14 | 41° 30' | 68° 30' |
| C11 | 41° 30' | 69° 23' |

CA II – In addition to the exemptions summarized in the first paragraph of this section the following vessels are also exempt from CA II: Vessels fishing in a groundfish special access program (SAP) or scallop access program in compliance with the regulations. CA II is defined by straight lines connecting the following points in the order stated:

| Point | N. Lat. | W. Long. |
|-------|-----------|-------------|
| CII1 | 41° 00' | 67° 20' |
| CII2 | 41° 00' | 66° 35.8' * |
| G5 | 41° 18.6' | 66° 24.8' * |
| CII3 | 42° 22' | 67° 20' |
| CII1 | 41° 00' | 67° 20' |

*The U.S.-Canada maritime boundary

NLCA – In addition to the exemptions summarized in the first paragraph of this section the following vessels are also exempt from the NLCA: Scallop vessels fishing in the Nantucket Lightship Access Area, vessels fishing with surfclam or ocean quahog dredge gear, and charter/party or recreational vessels. Charter and party vessels may fish in the NLCA provided they have an LOA from the Regional Administrator to enter or fish in the area (additional requirements also apply). An LOA may be obtained by calling the Permit Office at 978-281-9370.

Nantucket Lightship Closed Area

| Point | N. Lat. | W. Long. |
|-------|---------|----------|
| G10 | 40° 50' | 69° 00' |
| CN1 | 40° 20' | 69° 00' |
| CN2 | 40° 20' | 70° 20' |
| CN3 | 40° 50' | 70° 20' |
| G10 | 40° 50' | 69° 00' |

YEAR-ROUND ESSENTIAL FISH HABITAT (EFH) CLOSURE AREAS

EFH Closure Areas (see chart on page 6) are closed year-round to all bottom-tending mobile gears. Bottom-tending mobile gear is defined as the following: Gear in contact with the ocean bottom, and towed from a vessel, which is moved through the water during fishing in order to capture fish, and includes otter trawls, beam trawls, hydraulic dredges, non-hydraulic dredges, and seines (with the exception of a purse seine).

The Western GOM Habitat Closure Area is defined by straight lines connecting the following points in the order stated:

Western GOM Habitat Closure Area

| Point | N. Lat. | W. Long. |
|-------|---------|----------|
| WGM4 | 43° 15' | 70° 15' |
| WGM1 | 42° 15' | 70° 15' |
| WGM5 | 42° 15' | 70° 00' |
| WGM6 | 43° 15' | 70° 00' |
| WGM4 | 43° 15' | 70° 15' |

The Cashes Ledge Habitat Closure Area is defined by straight lines connecting the following points in the order stated:

Cashes Ledge Habitat Closure Area

| Point | N. Lat. | W. Long. |
|-------|---------|----------|
| CLH1 | 43° 01' | 69° 03' |
| CLH2 | 43° 01' | 68° 52' |
| CLH3 | 42° 45' | 68° 52' |
| CLH4 | 42° 45' | 69° 03' |
| CLH1 | 43° 01' | 69° 03' |

The Jeffrey's Bank Habitat Closure Area is defined by straight lines connecting the following points in the order stated:

Jeffrey's Bank Habitat Closure Area

| Point | N. Lat. | W. Long. |
|-------|---------|----------|
| JB1 | 43° 40' | 68° 50' |
| JB2 | 43° 40' | 68° 40' |
| JB3 | 43° 20' | 68° 40' |
| JB4 | 43° 20' | 68° 50' |
| JB1 | 43° 40' | 68° 50' |

The CA I North Habitat Closure Area is defined by straight lines connecting the following points in the order stated:

CA I North Habitat Closure Area

| Point | N. Lat. | W. Long. |
|-------|---------|----------|
| C11 | 41° 30' | 69° 23' |
| C14 | 41° 30' | 68° 30' |
| CIH1 | 41° 26' | 68° 30' |
| CIH2 | 41° 04' | 69° 01' |
| C11 | 41° 30' | 69° 23' |

The CA I South Habitat Closure Area is defined by straight lines connecting the following points in the order stated:

CA I South Habitat Closure Area

| Point | N. Lat. | W. Long. |
|-------|---------|----------|
| CIH3 | 40° 55' | 68° 53' |
| CIH4 | 40° 58' | 68° 30' |
| C13 | 40° 45' | 68° 30' |
| C12 | 40° 45' | 68° 45' |
| CIH3 | 40° 55' | 68° 53' |

The CA II Habitat Closure Area is defined by straight lines connecting the following points in the order stated:

CA II Habitat Closure Area

| Point | N. Lat. | W. Long. |
|-------|---------|----------|
| CIIH1 | 42° 10' | 67° 20' |
| CIIH2 | 42° 10' | 67° 9.3' |
| CIIH3 | 42° 00' | 67° 0.5' |
| CIIH4 | 42° 00' | 67° 10' |
| CIIH5 | 41° 50' | 67° 10' |
| CIIH6 | 41° 50' | 67° 20' |
| CIIH1 | 42° 10' | 67° 20' |

The Nantucket Lightship Habitat Closure Area is defined by straight lines connecting the following points in the order stated:

Nantucket Lightship Habitat Closure Area

| Point | N. Lat. | W. Long. |
|-------|---------|----------|
| NLH1 | 41° 10' | 70° 00' |
| NLH2 | 41° 10' | 69° 50' |
| NLH3 | 40° 50' | 69° 30' |
| NLH4 | 40° 20' | 69° 30' |
| NLH5 | 40° 20' | 70° 00' |
| NLH1 | 41° 10' | 70° 00' |

RESTRICTED GEAR AREAS (RGAs)

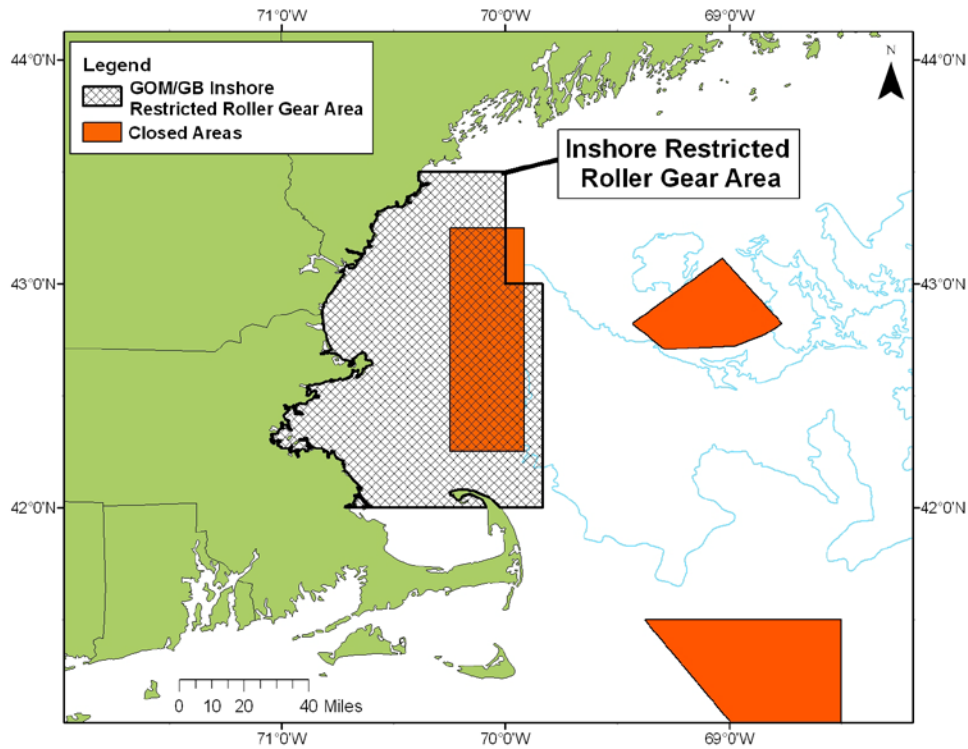
INSHORE RESTRICTED ROLLER GEAR AREA

For all trawl vessels fishing in the GOM/GB Inshore Restricted Roller Gear Area, the maximum diameter of any part of the trawl footrope, including discs, rollers or rockhoppers, may not exceed 12 inches. The area is defined by straight lines connecting the following points in the order stated:

Inshore Restricted Roller Gear Area

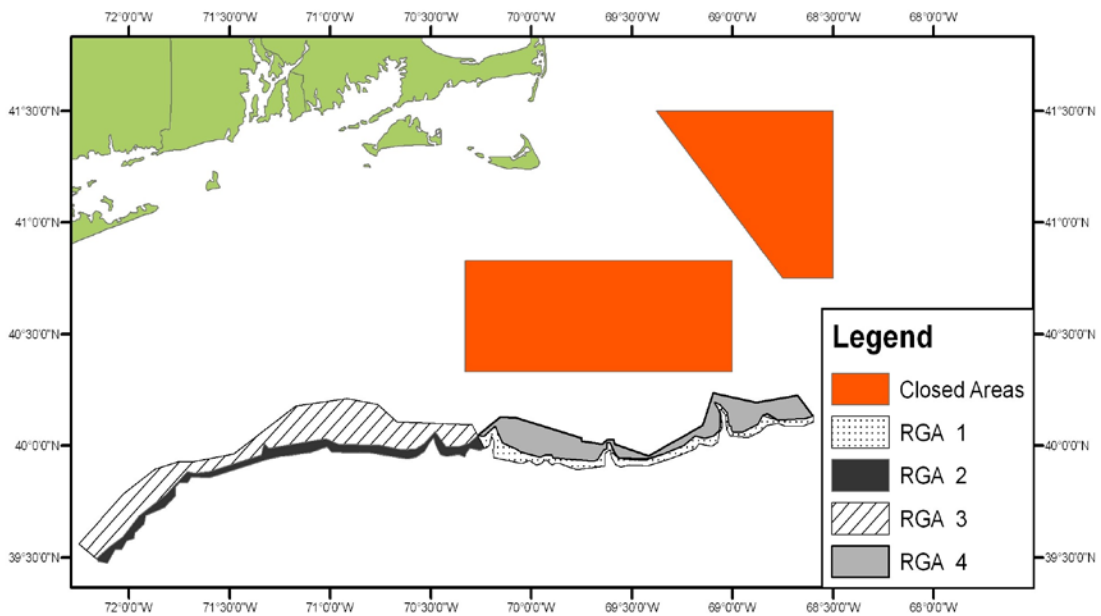
| Point | N. Lat. | W. Long. |
|-------|---------|----------|
| GM1 | 42° 00' | (1) |
| GM2 | 42° 00' | (2) |
| GM3 | 42° 00' | (3) |
| GM23 | 42° 00' | 69° 50' |
| GM24 | 43° 00' | 69° 50' |
| GM11 | 43° 00' | 70° 00' |
| GM17 | 43° 30' | 70° 00' |
| GM18 | 43° 30' | (4) |

- (1) Massachusetts shoreline
- (2) Cape Cod shoreline on Cape Cod Bay
- (3) Cape Cod shoreline on the Atlantic Ocean
- (4) Maine shoreline



MOBILE GEAR AND LOBSTER TRAP/POT RGAs

The following summarizes measures to separate mobile gear and lobster trap/pot gear in time and area according to the schedule below. Mobile gear vessels may transit the areas when closed, provided that all mobile gear is on board the vessel while inside the area.



| Mobile Gear and Lobster Trap/Pot RGAs | | |
|---------------------------------------|------------------------|-------------------------|
| RGA | Closed to mobile gear | Closed to trap/pot gear |
| I | October 1 - June 15 | June 16 – September 30 |
| II | November 27 - June 15 | June 16 – November 26 |
| III | June 16 - November 26 | January 1 – April 30 |
| IV | June 16 - September 30 | No closure |

Mobile Gear and Lobster Trap/Pot RGA

| RGA | Closed to mobile gear | Closed to trap/pot gear |
|-----|-----------------------|-------------------------|
| I | October 1 - June 15 | June 16 – September 30 |

| Inshore Boundary | | |
|------------------|------------|------------|
| Point | Latitude | Longitude |
| To 120 | | |
| 69 | 40° 07.9' | 68° 36.0' |
| 70 | 40° 07.2' | 68° 38.4' |
| 71 | 40° 06.9' | 68° 46.5' |
| 72 | 40° 08.7' | 68° 49.6' |
| 73 | 40° 08.1' | 68° 51.0' |
| 74 | 40° 05.7' | 68° 52.4' |
| 75 | 40° 03.6' | 68° 57.2' |
| 76 | 40° 03.65' | 69° 00.0' |
| 77 | 40° 04.35' | 69° 00.5' |
| 78 | 40° 05.2' | 69° 00.5' |
| 79 | 40° 05.3' | 69° 01.1' |
| 80 | 40° 08.9' | 69° 01.75' |
| 81 | 40° 11.0' | 69° 03.8' |
| 82 | 40° 11.6' | 69° 05.4' |
| 83 | 40° 10.25' | 69° 04.4' |
| 84 | 40° 09.75' | 69° 04.15' |
| 85 | 40° 08.45' | 69° 03.6' |
| 86 | 40° 05.65' | 69° 03.55' |
| 87 | 40° 04.1' | 69° 03.9' |
| 88 | 40° 02.65' | 69° 05.6' |
| 89 | 40° 02.00' | 69° 08.35' |
| 90 | 40° 02.65' | 69° 11.15' |
| 91 | 40° 00.05' | 69° 14.6' |
| 92 | 39° 57.8' | 69° 20.35' |
| 93 | 39° 56.65' | 69° 24.4' |
| 94 | 39° 56.1' | 69° 26.35' |
| 95 | 39° 56.55' | 69° 34.1' |
| 96 | 39° 57.85' | 69° 35.5' |
| 97 | 40° 00.65' | 69° 36.5' |
| 98 | 40° 00.9' | 69° 37.3' |
| 99 | 39° 59.15' | 69° 37.3' |
| 100 | 39° 58.8' | 69° 38.45' |
| 102 | 39° 56.2' | 69° 40.2' |
| 103 | 39° 55.75' | 69° 41.4' |
| 104 | 39° 56.7' | 69° 53.6' |
| 105 | 39° 57.55' | 69° 54.05' |
| 106 | 39° 57.4' | 69° 55.9' |
| 107 | 39° 56.9' | 69° 57.45' |
| 108 | 39° 58.25' | 70° 03.0' |
| 110 | 39° 59.2' | 70° 04.9' |
| 111 | 40° 00.7' | 70° 08.7' |
| 112 | 40° 03.75' | 70° 10.15' |
| 115 | 40° 05.2' | 70° 10.9' |
| 116 | 40° 02.45' | 70° 14.1' |
| 119 | 40° 02.75' | 70° 16.1' |
| To 181 | | |

| Offshore Boundary | | |
|-------------------|------------|------------|
| Point | Latitude | Longitude |
| To 69 | | |
| 120 | 40° 06.4' | 68° 35.8' |
| 121 | 40° 05.25' | 68° 39.3' |
| 122 | 40° 05.4' | 68° 44.5' |
| 123 | 40° 06.0' | 68° 46.5' |
| 124 | 40° 07.4' | 68° 49.6' |
| 125 | 40° 05.55' | 68° 49.8' |
| 126 | 40° 03.9' | 68° 51.7' |
| 127 | 40° 02.25' | 68° 55.4' |
| 128 | 40° 02.6' | 69° 00.0' |
| 129 | 40° 02.75' | 69° 00.75' |
| 130 | 40° 04.2' | 69° 01.75' |
| 131 | 40° 06.15' | 69° 01.95' |
| 132 | 40° 07.25' | 69° 02.0' |
| 133 | 40° 08.5' | 69° 02.25' |
| 134 | 40° 09.2' | 69° 03.3' |
| 135 | 40° 09.75' | 69° 03.3' |
| 136 | 40° 09.55' | 69° 03.85' |
| 137 | 40° 08.4' | 69° 03.4' |
| 138 | 40° 07.2' | 69° 03.3' |
| 139 | 40° 06.0' | 69° 03.1' |
| 140 | 40° 05.4' | 69° 03.5' |
| 141 | 40° 04.8' | 69° 03.05' |
| 142 | 40° 03.55' | 69° 03.55' |
| 143 | 40° 01.9' | 69° 03.95' |
| 144 | 40° 01.0' | 69° 04.4' |
| 146 | 39° 59.9' | 69° 06.25' |
| 147 | 40° 00.6' | 69° 10.5' |
| 148 | 39° 59.25' | 69° 11.15' |
| 149 | 39° 57.45' | 69° 16.05' |
| 150 | 39° 56.1' | 69° 20.1' |
| 151 | 39° 54.6' | 69° 25.65' |
| 152 | 39° 54.65' | 69° 26.9' |
| 153 | 39° 54.8' | 69° 30.95' |
| 154 | 39° 54.35' | 69° 33.4' |
| 155 | 39° 55.0' | 69° 34.9' |
| 156 | 39° 56.55' | 69° 36.0' |
| 157 | 39° 57.95' | 69° 36.45' |
| 158 | 39° 58.75' | 69° 36.3' |
| 159 | 39° 58.8' | 69° 36.95' |
| 160 | 39° 57.95' | 69° 38.1' |
| 161 | 39° 54.5' | 69° 38.25' |
| 162 | 39° 53.6' | 69° 46.5' |
| 163 | 39° 54.7' | 69° 50.0' |
| 164 | 39° 55.25' | 69° 51.4' |
| 165 | 39° 55.2' | 69° 53.1' |
| 166 | 39° 54.85' | 69° 53.9' |
| 167 | 39° 55.7' | 69° 54.35' |
| 168 | 39° 56.15' | 69° 55.35' |
| 169 | 39° 56.05' | 69° 56.25' |
| 170 | 39° 55.3' | 69° 57.1' |
| 171 | 39° 54.8' | 69° 58.6' |
| 172 | 39° 56.05' | 70° 00.65' |
| 173 | 39° 55.3' | 70° 02.95' |
| 174 | 39° 56.9' | 70° 11.3' |
| 175 | 39° 58.9' | 70° 11.5' |
| 176 | 39° 59.6' | 70° 11.1' |
| 177 | 40° 01.35' | 70° 11.2' |
| 178 | 40° 02.6' | 70° 12.0' |
| 179 | 40° 00.4' | 70° 12.3' |
| 180 | 39° 59.75' | 70° 13.05' |
| 181 | 39° 59.3' | 70° 14.0' |
| To 119 | | |

Mobile Gear and Lobster Trap/Pot RGA

| RGA | Closed to mobile gear | Closed to trap/pot gear |
|-----|-----------------------|-------------------------|
| II | November 27 - June 15 | June 16 – November 26 |

| Inshore Boundary | | |
|------------------|------------|------------|
| Point | Latitude | Longitude |
| To 1 | | |
| 49 | 40° 02.75' | 70° 16.1' |
| 50 | 40° 00.7' | 70° 18.6' |
| 51 | 39° 59.8' | 70° 21.75' |
| 52 | 39° 59.75' | 70° 25.5' |
| 53 | 40° 03.85' | 70° 28.75' |
| 54 | 40° 00.55' | 70° 32.1' |
| 55 | 39° 59.15' | 70° 34.45' |
| 56 | 39° 58.9' | 70° 38.65' |
| 57 | 40° 00.1' | 70° 45.1' |
| 58 | 40° 00.5' | 70° 57.6' |
| 59 | 40° 02.0' | 71° 01.3' |
| 60 | 39° 59.3' | 71° 18.4' |
| 61 | 40° 00.7' | 71° 19.8' |
| 62 | 39° 57.5' | 71° 20.6' |
| 63 | 39° 53.1' | 71° 36.1' |
| 64 | 39° 52.6' | 71° 40.35' |
| 65 | 39° 53.1' | 71° 42.7' |
| 66 | 39° 46.95' | 71° 49.0' |
| 67 | 39° 41.15' | 71° 57.1' |
| 68 | 39° 35.45' | 72° 02.0' |
| 69 | 39° 32.65' | 72° 06.1' |
| 70 | 39° 29.75' | 72° 09.8' |
| To 48 | | |

| Offshore Boundary | | |
|-------------------|------------|------------|
| Point | Latitude | Longitude |
| To 49 | | |
| 1 | 39° 59.3' | 70° 14.0' |
| 2 | 39° 58.85' | 70° 15.2' |
| 3 | 39° 59.3' | 70° 18.4' |
| 4 | 39° 58.1' | 70° 19.4' |
| 5 | 39° 57.0' | 70° 19.85' |
| 6 | 39° 57.0' | 70° 21.25' |
| 7 | 39° 57.5' | 70° 22.8' |
| 8 | 39° 57.1' | 70° 25.4' |
| 9 | 39° 57.65' | 70° 27.05' |
| 10 | 39° 58.58' | 70° 27.7' |
| 11 | 40° 00.65' | 70° 28.8' |
| 12 | 40° 02.2' | 70° 29.15' |
| 13 | 40° 01.0' | 70° 30.2' |
| 14 | 39° 58.58' | 70° 31.85' |
| 15 | 39° 57.05' | 70° 34.35' |
| 16 | 39° 56.42' | 70° 36.8' |
| 21 | 39° 58.15' | 70° 48.0' |
| 24 | 39° 58.3' | 70° 51.1' |
| 25 | 39° 58.1' | 70° 52.25' |
| 26 | 39° 58.05' | 70° 53.55' |
| 27 | 39° 58.4' | 70° 59.6' |
| 28 | 39° 59.8' | 71° 01.05' |
| 29 | 39° 58.2' | 71° 05.85' |
| 30 | 39° 57.45' | 71° 12.15' |
| 31 | 39° 57.2' | 71° 15.0' |
| 32 | 39° 56.3' | 71° 18.95' |
| 33 | 39° 51.4' | 71° 36.1' |
| 34 | 39° 51.75' | 71° 41.5' |
| 35 | 39° 50.05' | 71° 42.5' |
| 36 | 39° 50.0' | 71° 45.0' |
| 37 | 39° 48.95' | 71° 46.05' |
| 38 | 39° 46.6' | 71° 46.1' |
| 39 | 39° 43.5' | 71° 49.4' |
| 40° | 39° 41.3' | 71° 55.0' |
| 41 | 39° 39.0' | 71° 55.6' |
| 42 | 39° 36.72' | 71° 58.25' |
| 43 | 39° 35.15' | 71° 58.55' |
| 44 | 39° 34.5' | 72° 00.75' |
| 45 | 39° 32.2' | 72° 02.25' |
| 46 | 39° 32.15' | 72° 04.1' |
| 47 | 39° 28.5' | 72° 06.5' |
| 48 | 39° 29.0' | 72° 09.25' |
| To 70 | | |

| Mobile Gear and Lobster Trap/Pot RGA | | |
|--------------------------------------|-----------------------|-------------------------|
| RGA | Closed to mobile gear | Closed to trap/pot gear |
| III | June 16 - November 26 | January 1 – April 30 |

| Inshore Boundary | | |
|------------------|------------|-------------|
| Point | Latitude | Longitude |
| To 49 | | |
| 182 | 40° 05.6' | 70° 17.7' |
| 183 | 40° 06.5' | 70° 40 .05' |
| 184 | 40° 11.05' | 70° 45.8' |
| 185 | 40° 12.75' | 70° 55.05' |
| 186 | 40° 10.7' | 71° 10.25' |
| 187 | 39° 57.9' | 71° 28.7' |
| 188 | 39° 55.6' | 71° 41.2' |
| 189 | 39° 55.85' | 71° 45.0' |
| 190 | 39° 53.75' | 71° 52.25' |
| 191 | 39° 47.2' | 72° 01.6' |
| 192 | 39° 33.65' | 72° 15.0' |
| To 70 | | |

| Offshore Boundary | | |
|-------------------|------------|------------|
| Point | Latitude | Longitude |
| To 182 | | |
| 49 | 40° 02.75' | 70° 16.1' |
| 50 | 40° 00.7' | 70° 18.6' |
| 51 | 39° 59.8' | 70° 21.75' |
| 52 | 39° 59.75' | 70° 25.5' |
| 53 | 40° 03.85' | 70° 28.75' |
| 54 | 40° 00.55' | 70° 32.1' |
| 55 | 39° 59.15' | 70° 34.45' |
| 56 | 39° 58.9' | 70° 38.65' |
| 57 | 40° 00.1' | 70° 45.1' |
| 58 | 40° 00.5' | 70° 57.6' |
| 59 | 40° 02.0' | 71° 01.3' |
| 60 | 39° 59.3' | 71° 18.4' |
| 61 | 40° 00.7' | 71° 19.8' |
| 62 | 39° 57.5' | 71° 20.6' |
| 63 | 39° 53.1' | 71° 40.35' |
| 64 | 39° 52.6' | 71° 40.35' |
| 65 | 39° 53.1' | 71° 42.7' |
| 66 | 39° 46.95' | 71° 49.0' |
| 67 | 39° 41.15' | 71° 57.1' |
| 68 | 39° 35.45' | 72° 02.0' |
| 69 | 39° 32.65' | 72° 06.1' |
| 70 | 39° 29.75' | 72° 09.8' |
| To 192 | | |

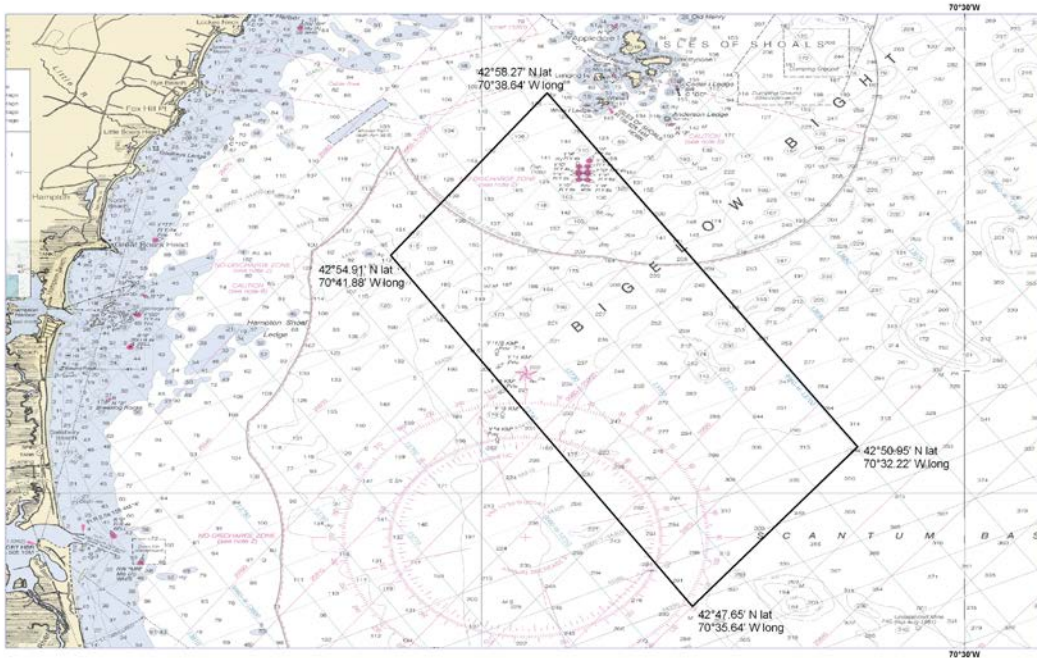
Mobile Gear and Lobster Trap/Pot RGA

| RGA | Closed to mobile gear | Closed to trap/pot gear |
|-----|------------------------|-------------------------|
| IV | June 16 - September 30 | No closure |

| Inshore Boundary | | |
|------------------|------------|------------|
| Point | Latitude | Longitude |
| 193 | 40° 13.6' | 68° 40.6' |
| 194 | 40° 11.6' | 68° 53.0' |
| 195 | 40° 14.0' | 69° 04.70' |
| 196 | 40° 14.30' | 69° 05.80' |
| 197 | 40° 05.5' | 69° 09.0' |
| 198 | 39° 57.3' | 69° 25.10' |
| 199 | 40° 00.40' | 69° 35.20' |
| 200 | 40° 01.70' | 69° 35.40' |
| 201 | 40° 01.70' | 69° 37.40' |
| 202 | 40° 00.50' | 69° 38.80' |
| 203 | 40° 01.30' | 69° 45.00' |
| 204 | 40° 02.10' | 69° 45.00' |
| 205 | 40° 07.60' | 70° 04.50' |
| 206 | 40° 07.80' | 70° 09.20' |
| To 119 | | |

| Offshore Boundary | | |
|-------------------|------------|------------|
| Point | Latitude | Longitude |
| 69 | 40° 07.90' | 68° 36.00' |
| 70 | 40° 07.2' | 68° 38.40' |
| 71 | 40° 06.90' | 68° 46.50' |
| 72 | 40° 08.70' | 68° 49.60' |
| 73 | 40° 08.10' | 68° 51.00' |
| 74 | 40° 05.70' | 68° 52.40' |
| 75 | 40° 03.60' | 68° 57.20' |
| 76 | 40° 03.65' | 69° 00.00' |
| 77 | 40° 04.35' | 69° 00.50' |
| 78 | 40° 05.20' | 69° 00.50' |
| 79 | 40° 05.30' | 69° 01.10' |
| 80 | 40° 08.90' | 69° 01.75' |
| 81 | 40° 11.00' | 69° 03.80' |
| 82 | 40° 11.60' | 69° 05.40' |
| 83 | 40° 10.25' | 69° 04.40' |
| 84 | 40° 09.75' | 69° 04.15' |
| 85 | 40° 08.45' | 69° 03.60' |
| 86 | 40° 05.65' | 69° 03.55' |
| 87 | 40° 04.10' | 69° 03.90' |
| 88 | 40° 02.65' | 69° 05.60' |
| 89 | 40° 02.00' | 69° 08.35' |
| 90 | 40° 02.65' | 69° 11.15' |
| 91 | 40° 00.05' | 69° 14.60' |
| 92 | 39 57.8' | 69° 20.35' |
| 93 | 39 56.75' | 69° 24.40' |
| 94 | 39 56.50' | 69° 26.35' |
| 95 | 39 56.80' | 69° 34.10' |
| 96 | 39 57.85' | 69° 35.05' |
| 97 | 40° 00.65' | 69° 37.30' |
| 98 | 40° 00.90' | 69° 37.30' |
| 99 | 39 59.15' | 69° 37.30' |
| 100 | 39 58.80' | 69° 38.45' |
| 102 | 39 56.20' | 69° 40.20' |
| 103 | 39 55.75' | 69° 41.40' |
| 104 | 39 56.70' | 69° 53.60' |
| 105 | 39 57.55' | 69° 54.05' |
| 106 | 39 57.40' | 69° 55.90' |
| 107 | 39 56.90' | 69° 57.45' |
| 108 | 39 58.25' | 70° 03.00' |
| 110 | 39 59.20' | 70° 04.90' |
| 111 | 40° 00.70' | 70° 08.70' |
| 112 | 40° 03.75' | 70° 10.15' |
| 115 | 40° 05.20' | 70° 10.90' |
| 116 | 40° 02.45' | 70° 14.1' |
| 119 | 40° 02.75' | 70° 16.1' |
| To 206 | | |

WHALEBACK COD SPAWNING PROTECTION AREA



Gear Restrictions: The following gear restrictions apply to either commercial or recreational fishing vessels fishing in the GOM Cod Spawning Protection Area.

- **Commercial vessels:** From April 1 through June 30 of each year, all commercial fishing vessels are prohibited from fishing within the GOM Cod Spawning Protection Area using gear capable of catching groundfish, including mid-water trawl and purse seine gear. Commercial fishing vessels may only use the following exempted gear in this area from April 1 through June 30:
 - Pelagic hook and line gear, pelagic longline gear, spears, rakes, diving gear, cast nets, tongs, harpoons, weirs, dipnets, stop nets, pound nets, pelagic gillnets, pots and traps, shrimp trawls with a properly configured grate, and surfclam and ocean quahog dredges.
 - Pelagic gillnet gear is defined as a single pelagic gillnet that is no longer than 300 ft and not greater than 6 ft deep, with a maximum mesh size of 3 inches (7.6 cm), that is attached to the boat and fished in the upper two-thirds of the water column.
- **Recreational vessels:** From April 1 through June 30 of each year, all recreational vessels, including private recreational and charter/party vessels, may only use pelagic hook-and-line gear, as defined below, when fishing in the GOM Cod Spawning Protection Area.
 - Pelagic hook-and-line gear is defined as handline or rod and reel gear that is designed to fish for, or that is being used to fish for, pelagic species. No portion of this gear may be operated in contact with the bottom at any time.

| Point | N. Latitude | W. Longitude |
|-------|-------------|--------------|
| CSPA1 | 42° 50.95' | 70° 32.22' |
| CSPA2 | 42° 47.65' | 70° 35.64' |
| CSPA3 | 42° 54.91' | 70° 41.88' |
| CSPA4 | 42° 58.27' | 70° 38.64' |

Possession Restrictions: Any vessel fishing in the GOM Cod Spawning Protection Area and using the exempted gear described above, including pelagic hook-and-line gear by recreational vessels, is prohibited from possessing or retaining regulated species or ocean pout from April 1 through June 30 of each year.

Transiting: Both recreational and commercial vessels are allowed to transit the GOM Cod Spawning Protection Area, provided all gear is stowed in accordance with the regulations.