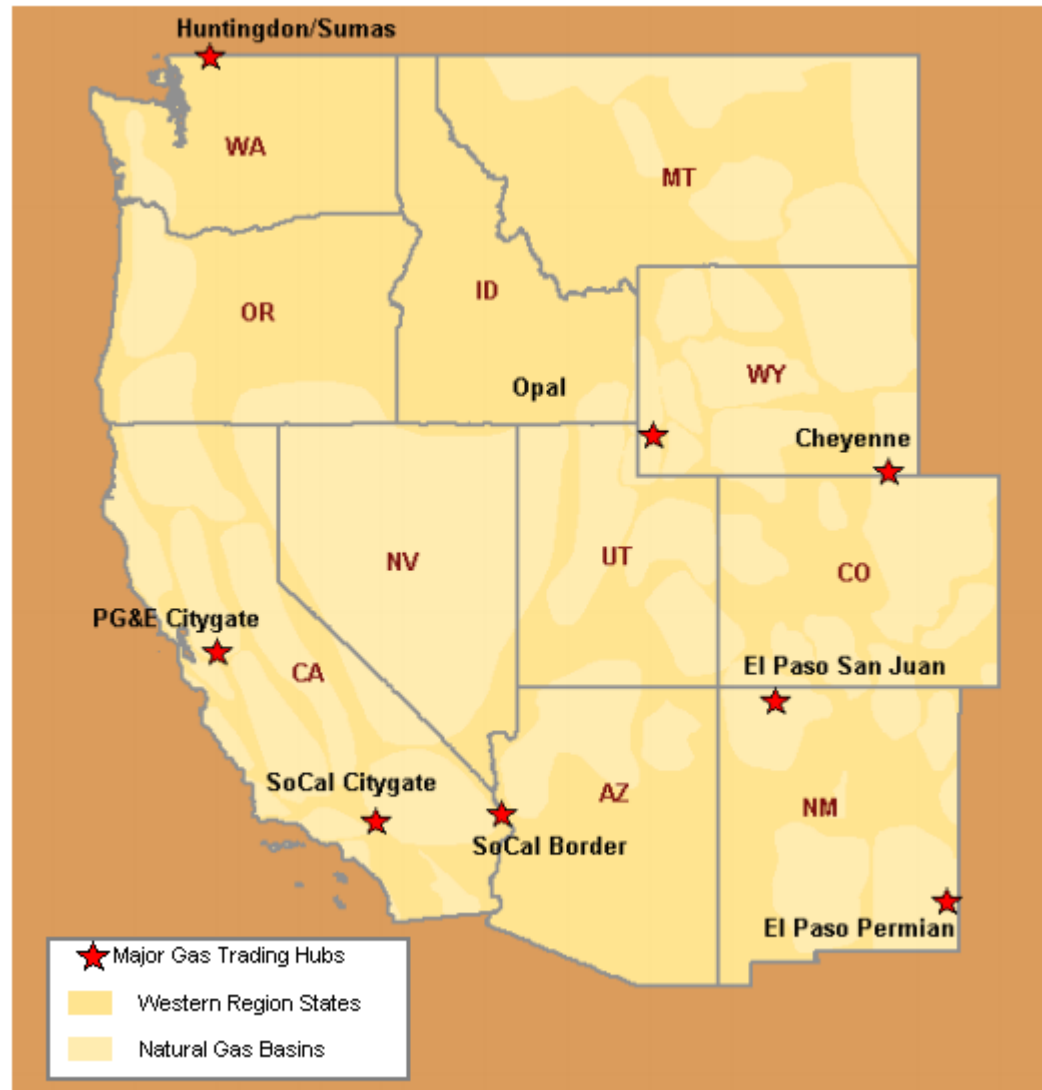


West Natural Gas Region



West Day-Ahead Natural Gas Prices Averaged Annually/Seasonally

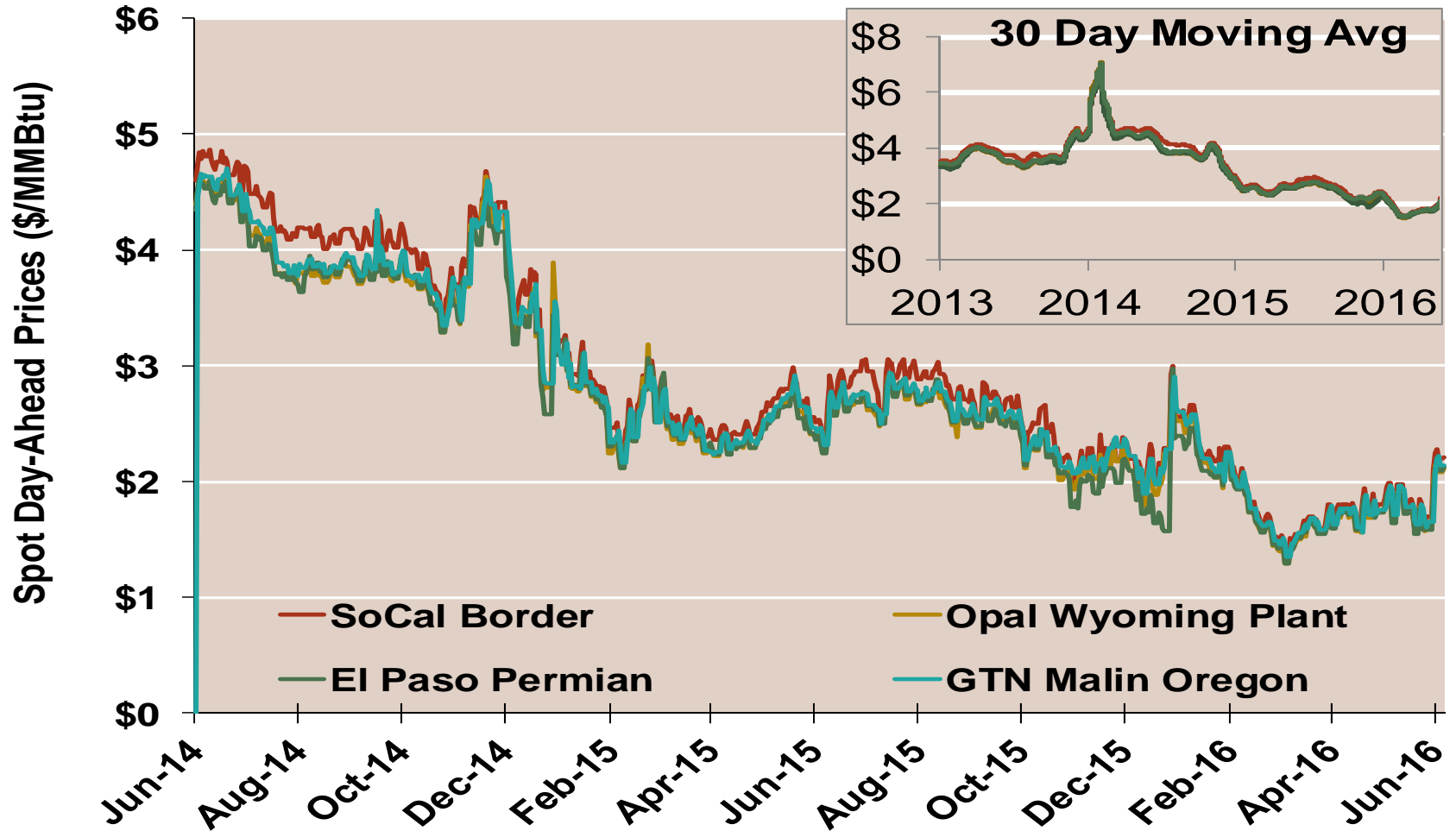
	Average Day Ahead Prices (\$/MMBtu)	SoCal Border	Opal Wyoming Plant	El Paso Permian	GTN Malin Oregon	Henry Hub
2013	Annual	3.83	3.65	3.63	3.71	3.72
	Summer	3.82	3.61	3.63	3.67	3.76
	Winter 2013/2014	4.89	4.88	4.68	4.88	4.61
2014	Annual	4.50	4.35	4.26	4.39	4.32
	Summer	4.34	4.07	4.07	4.14	4.18
	Winter 2014/2015	3.15	3.03	3.01	3.06	3.21
2015	Annual	2.60	2.46	2.44	2.51	2.60
	Summer	2.67	2.51	2.51	2.56	2.67
	Winter 2015/2016	2.04	1.96	1.88	2.01	1.97
2016 YTD	Annual	1.94	1.85	1.85	1.89	2.01
	Summer	1.95	1.86	1.86	1.90	2.05
	Winter 2016/2017					

Notes:

Source: Data derived from Bloomberg ICE data

Updated Jun-2016

West Daily Day-Ahead Prices

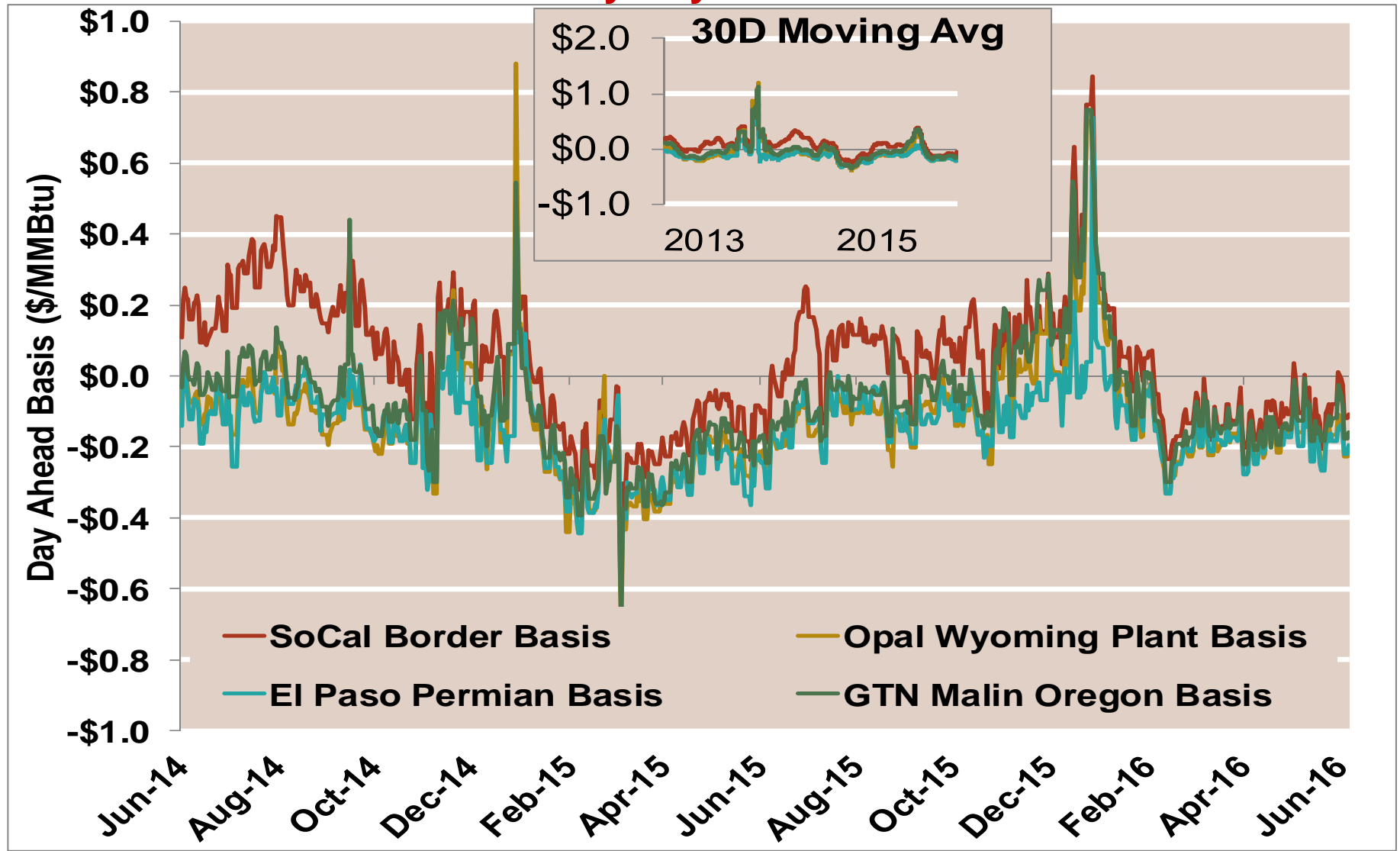


Notes:

Source: Data derived from Bloomberg ICE data

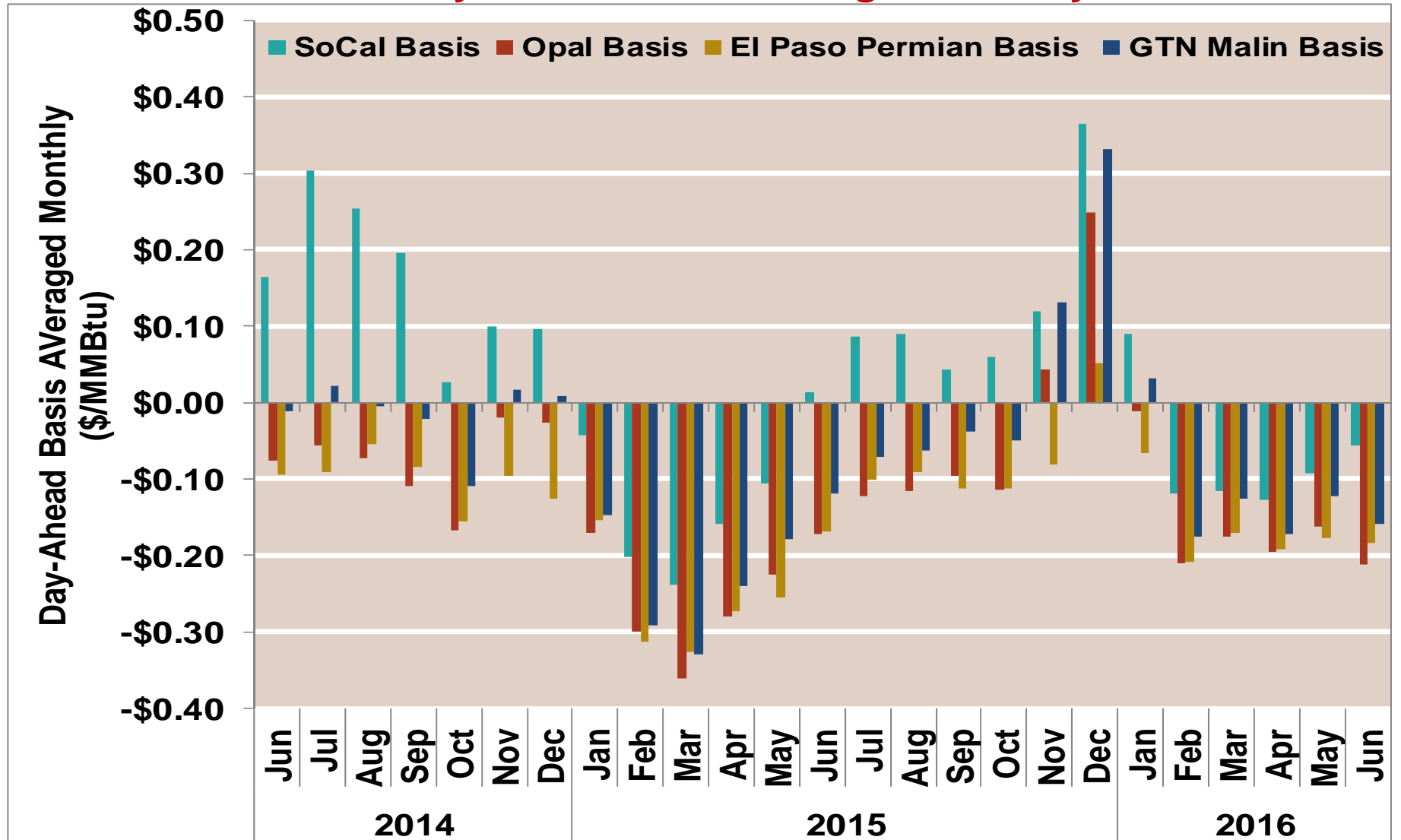
Updated Jun-2016

West Daily Day-Ahead Basis



Notes:
Source: Data derived from Bloomberg ICE data

West Day-Ahead Basis Averaged Monthly

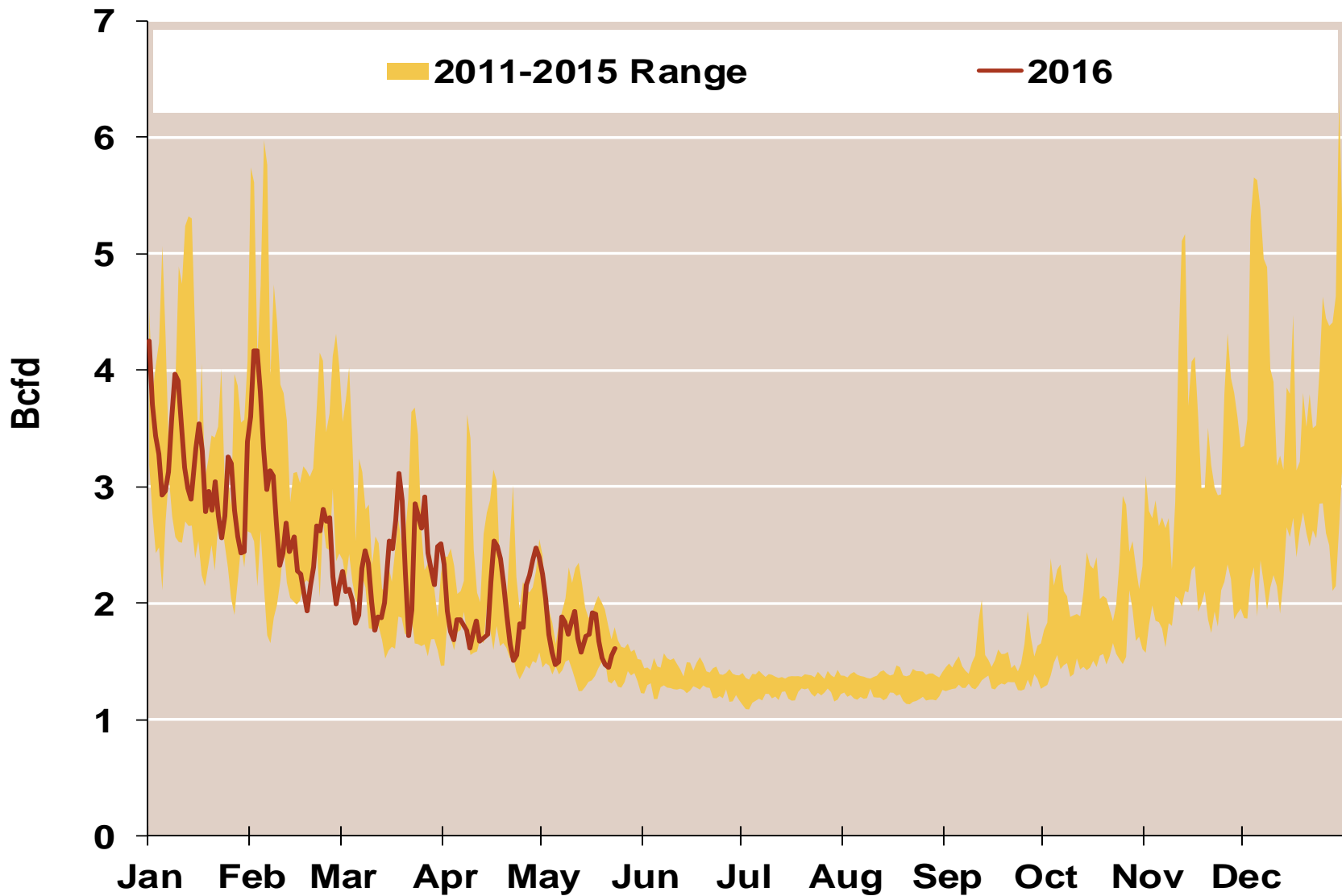


Notes:

Source: Data derived from Bloomberg ICE data

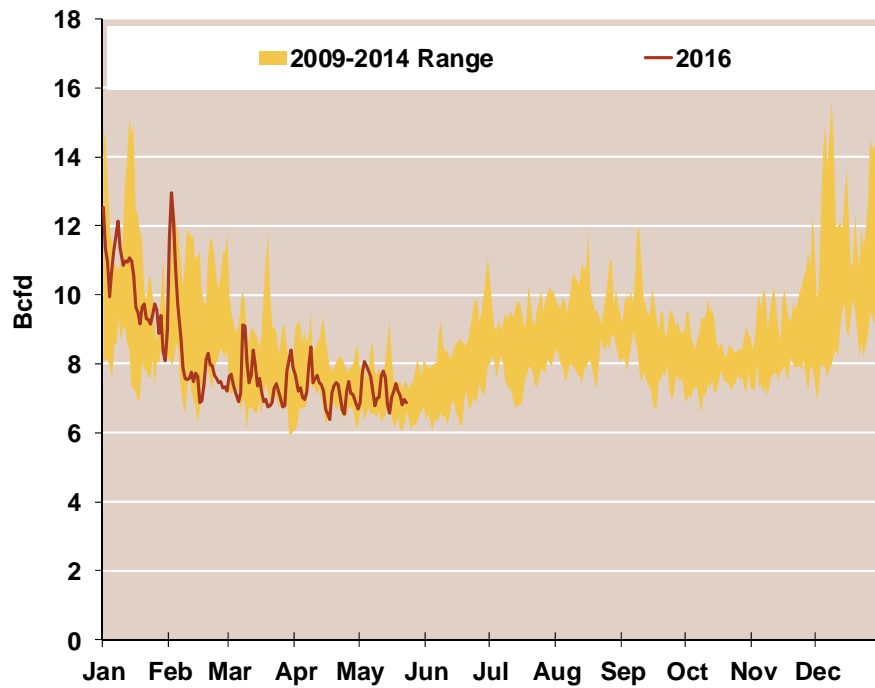
Updated Jun-2016

Daily Rockies Natural Gas Demand All Sectors

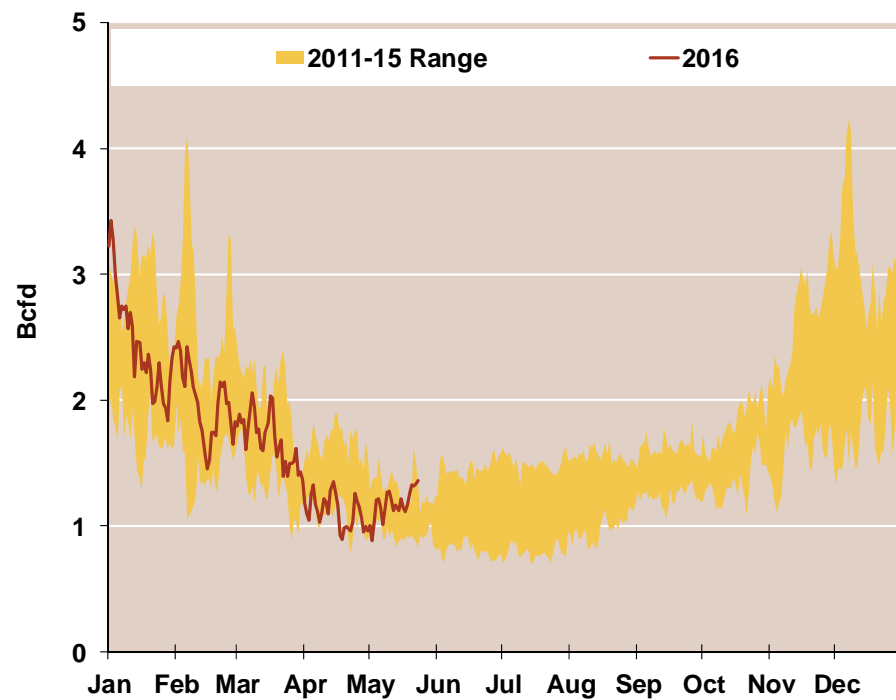


Daily Southwest and Northwest Natural Gas Demand All Sectors

Southwest



Northwest

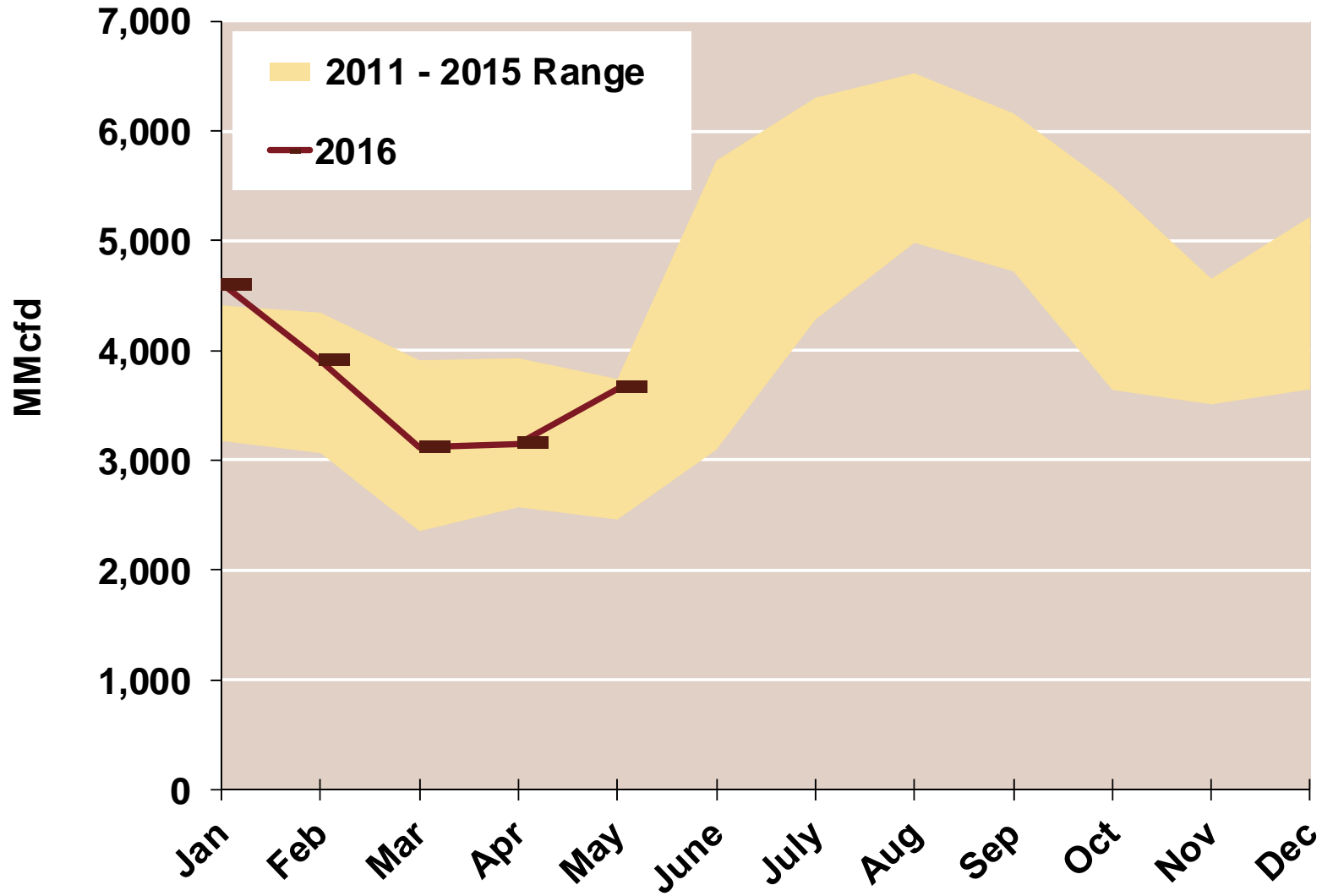


Source: Derived from *Bentek Energy* data

Note: Data derived from interstate natural gas pipeline flows.

Updated: May 2016

West Natural Gas Consumption for Power Generation



Pacific NW Snow Water Equivalent (% of Avg)