



U.S. DEPARTMENT OF ENERGY

LOAN PROGRAMS OFFICE

INVESTING *in*
AMERICAN ENERGY

energy.gov/lpo



LPO PROGRAMS

\$40 BILLION IN REMAINING LOAN AUTHORITY

LPO investments accelerate the deployment of innovative clean energy projects and advanced vehicle manufacturing facilities in the United States



TITLE XVII

INNOVATIVE CLEAN ENERGY PROJECTS

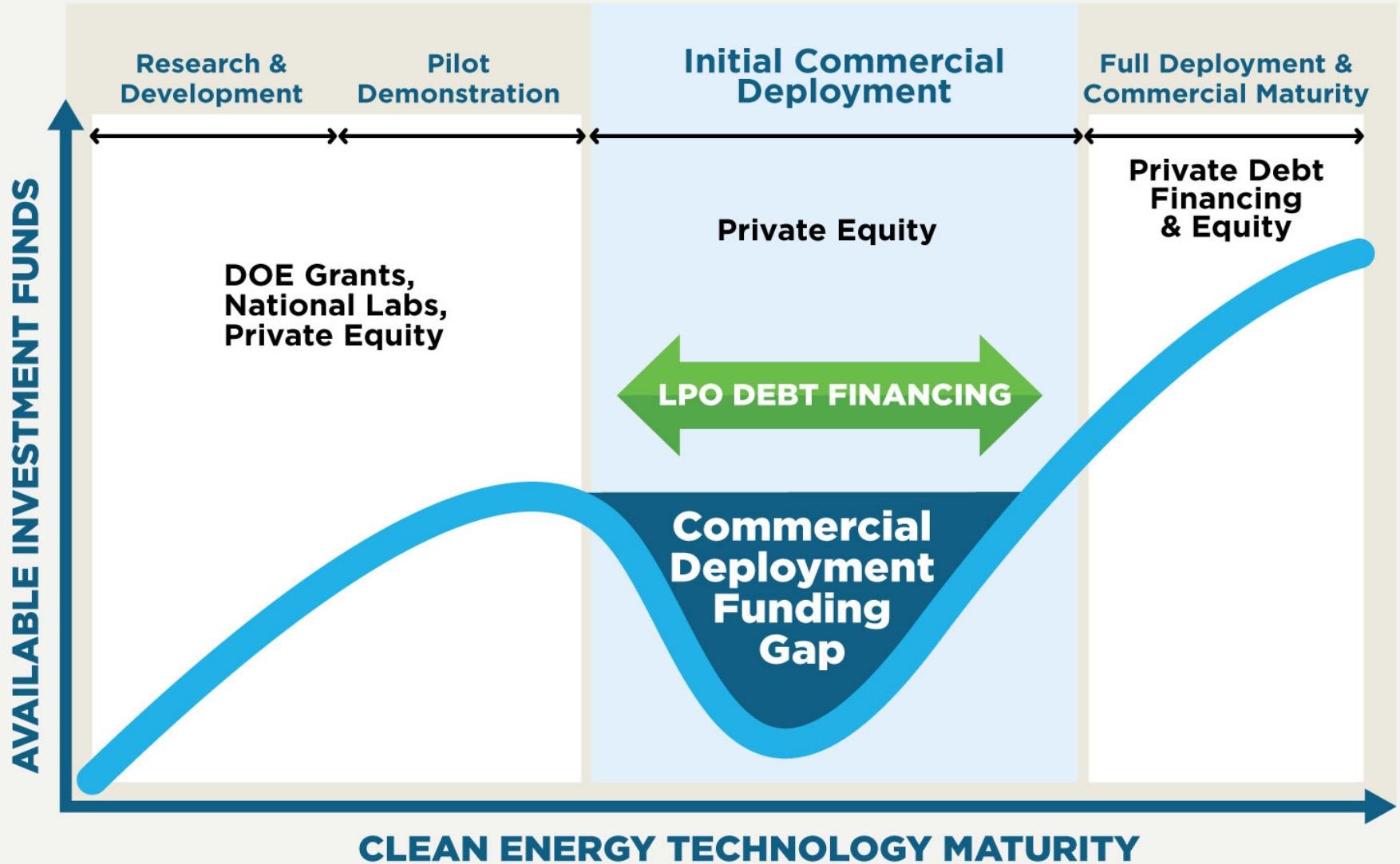
-  Loan guarantees
-  Applications accepted via scheduled solicitations

ATVM

ADVANCED TECHNOLOGY VEHICLES MANUFACTURING

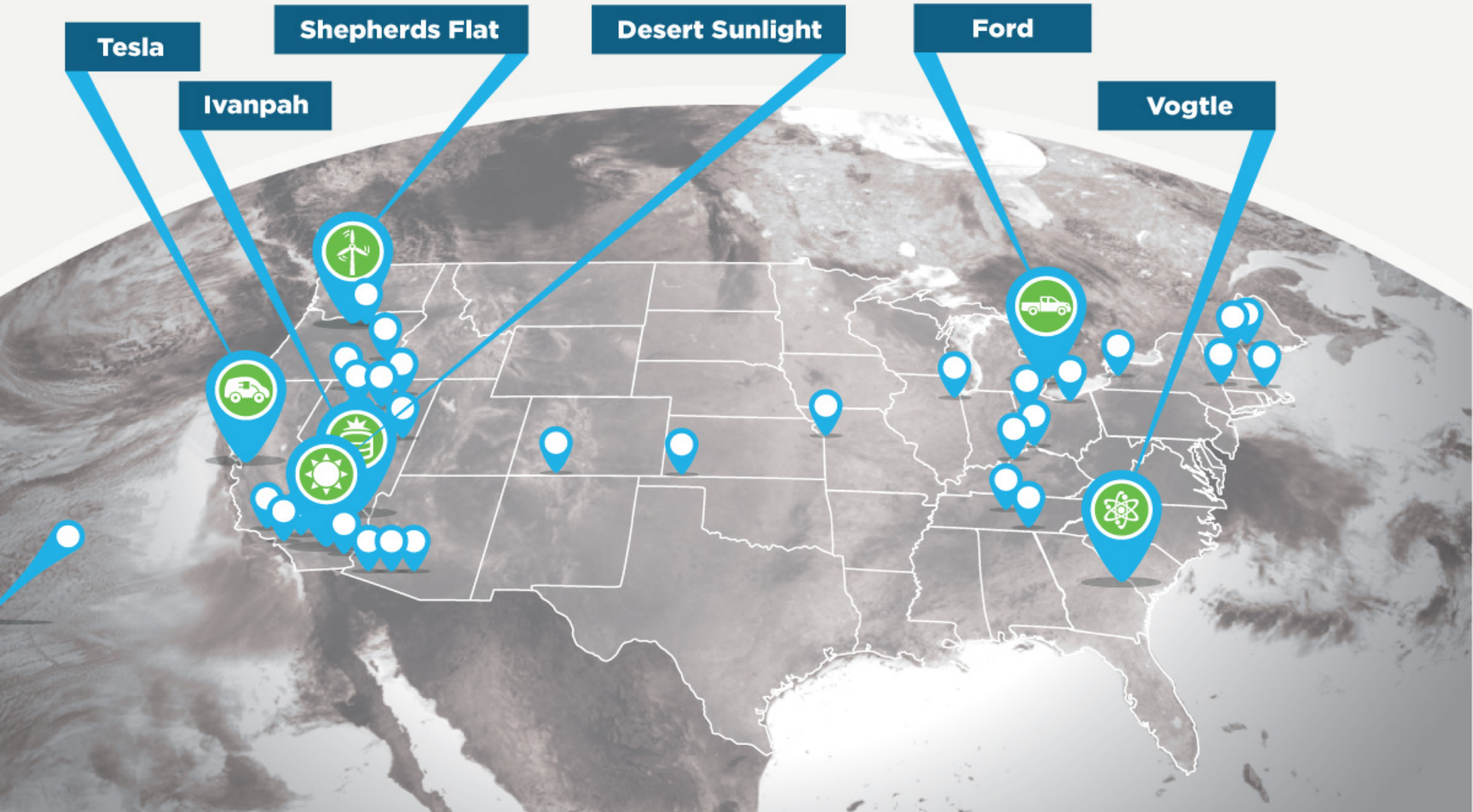
-  Direct loans
-  Applications accepted on a rolling basis

BRIDGING THE GAP



DEPLOYING INNOVATION

\$30 BILLION INVESTED IN MORE THAN 30 DIVERSE PROJECTS NATIONWIDE



LAUNCHING NEW MARKETS

U.S. UTILITY-SCALE PHOTOVOLTAIC SOLAR (PV) PROJECTS >100MW

2010

0

UTILITY-SCALE
PV PROJECTS
IN THE U.S.

5

LPO PV PROJECTS

\$4.6 BILLION
IN LOANS

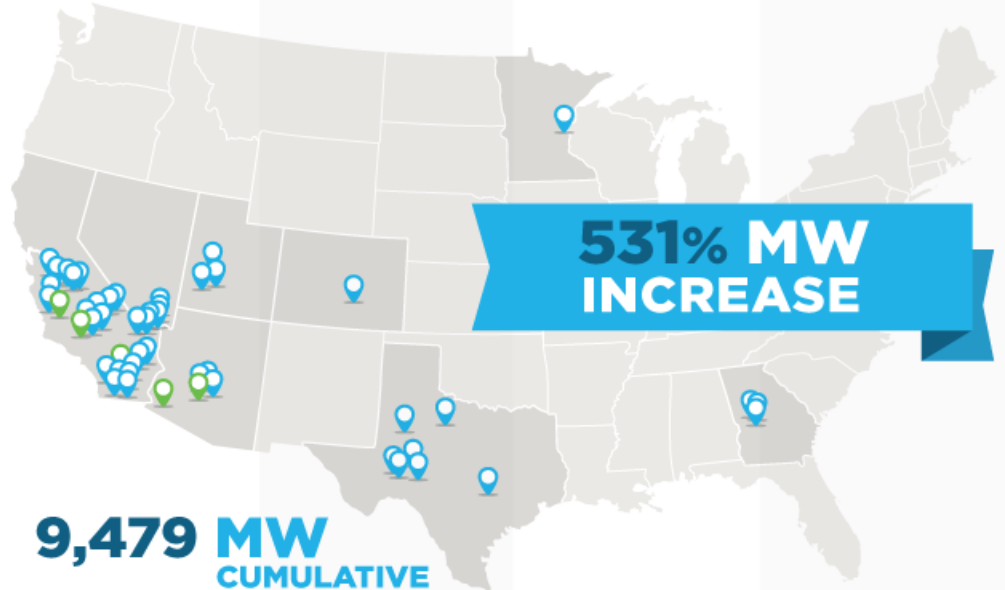


1,502 MW

2012

45

PRIVATELY FINANCED PV PROJECTS



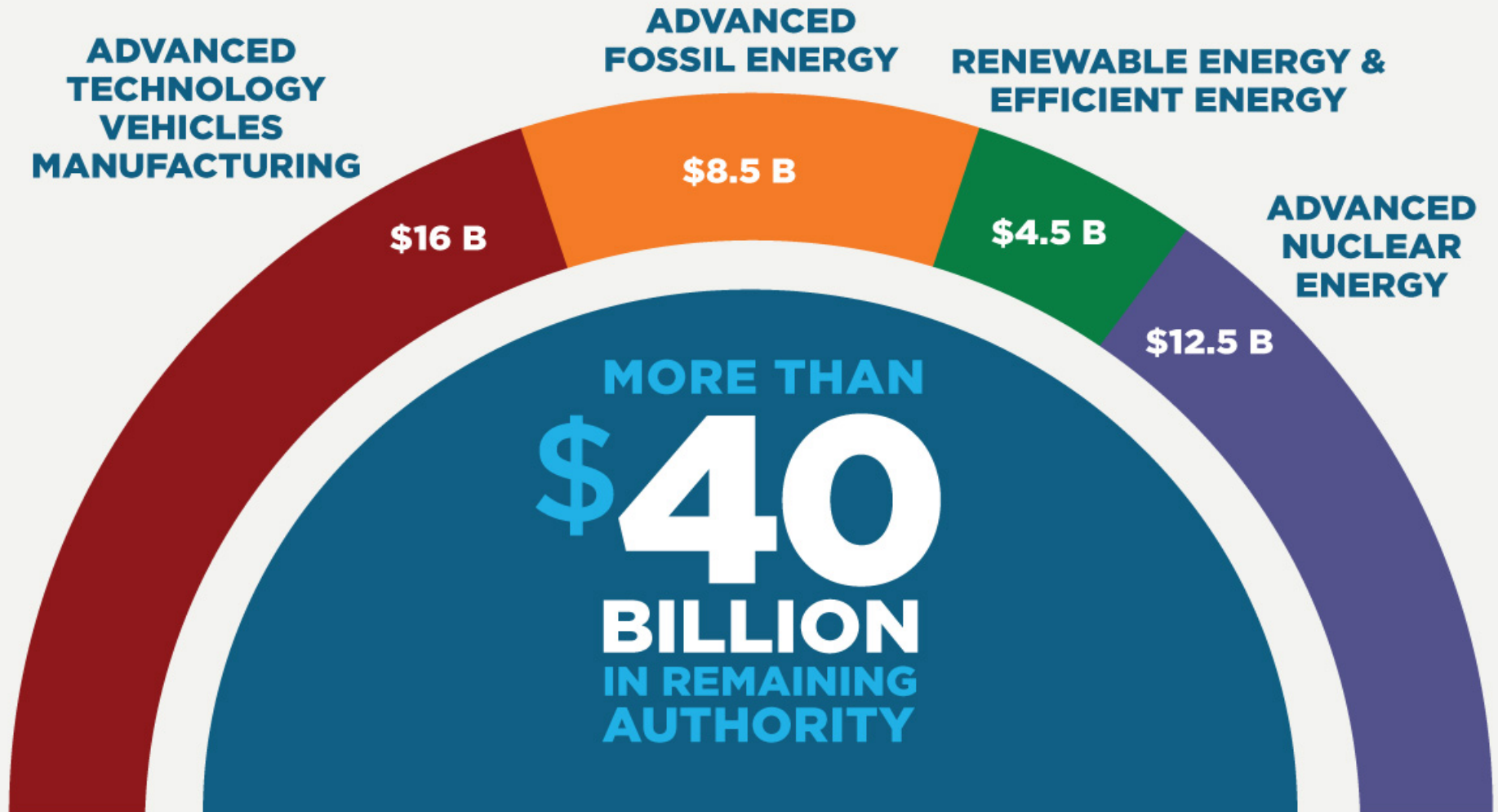
9,479 MW
CUMULATIVE

1705 Program
Ends

2016

NOTE: MW totals include projects operating or that have obtained financing. All information as of September 2016.

INNOVATION CONTINUES



AS OF OCTOBER 2015

FINANCIAL TERMS

TITLE XVII CLEAN ENERGY PROJECTS

LOAN GUARANTEE: A loan guarantee can support debt from a commercial lender or the U.S. Treasury

LOAN TENOR: Long-term financing is available based on the useful life of the asset – up to 30 years

INTEREST RATES: Interest rates set based on equivalent U.S. Treasury rate plus a credit-based spread (~0.5-1.5%)

EQUITY: LPO can only guarantee up to 80% of the total project cost. Most projects have at least 35% equity

CO-LENDING: Co-lending with commercial lenders is encouraged but not required

ELIGIBILITY REQUIREMENTS

TITLE XVII CLEAN ENERGY PROJECTS



INNOVATIVE TECHNOLOGY

Eligible projects must utilize new or significantly improved technology or systems



GREENHOUSE GAS BENEFITS

Eligible projects must reduce, avoid, or sequester greenhouse gases



LOCATED IN THE U.S.

Eligible projects must be located in the United States but may be foreign-owned



REASONABLE PROSPECT OF REPAYMENT

Eligible projects must be able to repay loan principal and interest. LPO conducts due diligence and underwrites each loan similar to a commercial lender



ADVANCED FOSSIL ENERGY

TECHNOLOGY AREAS OF INTEREST

- ⚡ **Advanced Resource Development**
- ⚡ **Low Carbon Power Systems**
- ⚡ **Carbon Capture**
- ⚡ **Efficiency Improvements**

QUALIFYING PROJECTS ARE NOT LIMITED TO THESE TECHNOLOGIES.

RENEWABLE ENERGY & EFFICIENCY

TECHNOLOGY AREAS OF INTEREST

- ⚡ **Advanced Grid Integration & Storage**
- ⚡ **Drop-in Biofuels**
- ⚡ **Waste-to-Energy**
- ⚡ **Enhancement of Existing Facilities**
- ⚡ **Efficiency Improvements**

QUALIFYING PROJECTS ARE NOT LIMITED TO THESE TECHNOLOGIES.

DISTRIBUTED ENERGY PROJECTS

SUPPLEMENTAL GUIDANCE FOR:

The banner features a background image of an industrial facility with tall chimneys and a worker in the foreground. The text is overlaid in white on an orange background.

Advanced Fossil Energy Projects SOLICITATION

The banner features a background image of a green solar panel array. The text is overlaid in white on a green background.

Renewable Energy & Efficient Energy Projects SOLICITATION

- Comprised of installations of facilities utilizing a single technology, or a defined suite of technologies, at multiple sites, deployed pursuant to a master business plan.
- Must satisfy criteria of Title XVII, LPO regulations, and applicable solicitation.
- Access to financing under a single arrangement for multiple installations.
- Structures other than illustrations in supplements may exist or be developed.
- Solicitations do not involve a re-lending program.

ADVANCED NUCLEAR ENERGY

TECHNOLOGY AREAS OF INTEREST

- ⚡ **Advanced Nuclear Reactors**
- ⚡ **Small Modular Reactors (SMRs)**
- ⚡ **Upgrades and Upgrades at Existing Facilities**
- ⚡ **Front-End Nuclear**

QUALIFYING PROJECTS ARE NOT LIMITED TO THESE TECHNOLOGIES.



ADVANCED VEHICLE MANUFACTURING

TECHNOLOGY AREAS OF INTEREST

- ⚡ **Advanced Technology Vehicles Manufacturing**
- ⚡ **Qualified Component Manufacturing**
- ⚡ **Engineering Integration**

QUALIFYING PROJECTS ARE NOT LIMITED TO THESE TECHNOLOGIES.

APPLICATION PROCESS

01

APPLICATION-PART I

- Determine basic eligibility
- \$50,000 fee (Fee does not apply to ATVM)

02

APPLICATION-PART II

- Confirmatory due diligence
- Balance of application fee (\$100,000/\$350,000)
(Fee does not apply to ATVM)

03

CONDITIONAL COMMITMENT

- Negotiate term sheet

04

LOAN GUARANTEE

- Negotiate final agreements
- Remaining fees

Apply *at*
energy.gov/lpo/apply



U.S. DEPARTMENT OF ENERGY

LOAN PROGRAMS OFFICE

Advanced Fossil Energy:

LPO.FossilSolicitation.Questions@hq.doe.gov

Renewable Energy & Efficient Energy:

LPO.REEESolicitation.Questions@hq.doe.gov

Advanced Nuclear Energy:

LPO.NuclearSolicitation.Questions@hq.doe.gov

Advanced Technology Vehicle Manufacturing:

atvmloan@hq.doe.gov

For more information,
and to apply online,
please visit:

PHONE 202-586-8336 | **FAX** 202-586-7366 | **EMAIL** lgprogram@hq.doe.gov

energy.gov/lpo