

# Outer Continental Shelf Renewable Energy Leases

Map Book

December 2016

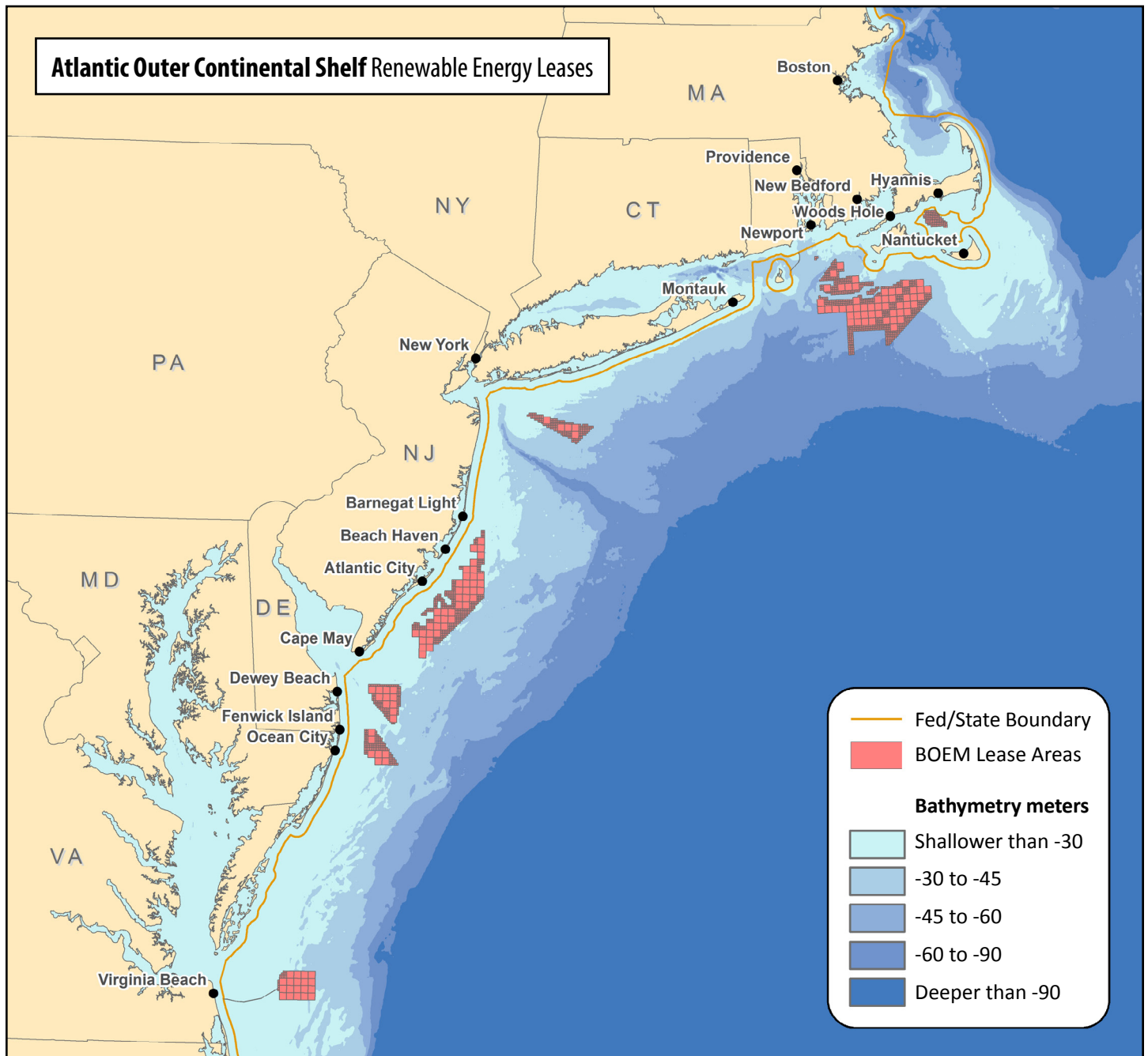


BOEM

# BOEM's Renewable Energy Program

Department of the Interior's Bureau of Ocean Energy Management (BOEM) is responsible for overseeing offshore renewable energy development in Federal waters.

For more detailed information about the status and lineage of these activities, visit our website: [www.boem.gov/Renewable-Energy-State-Activities](http://www.boem.gov/Renewable-Energy-State-Activities)



This book provides an overview of active commercial and research leases issued by BOEM to date. Each page is focused on a single lease and provides relevant statistics about the lease.

The following information regarding each lease is listed on the maps:

**State:** The state task force involved in the planning process

**Lease Number:** A unique alphanumeric number assigned by BOEM to manage lease documentation

**Lessee:** The company currently holding the lease

**Lease Type:** There are three possible types of leases: *Commercial, Research or Limited*

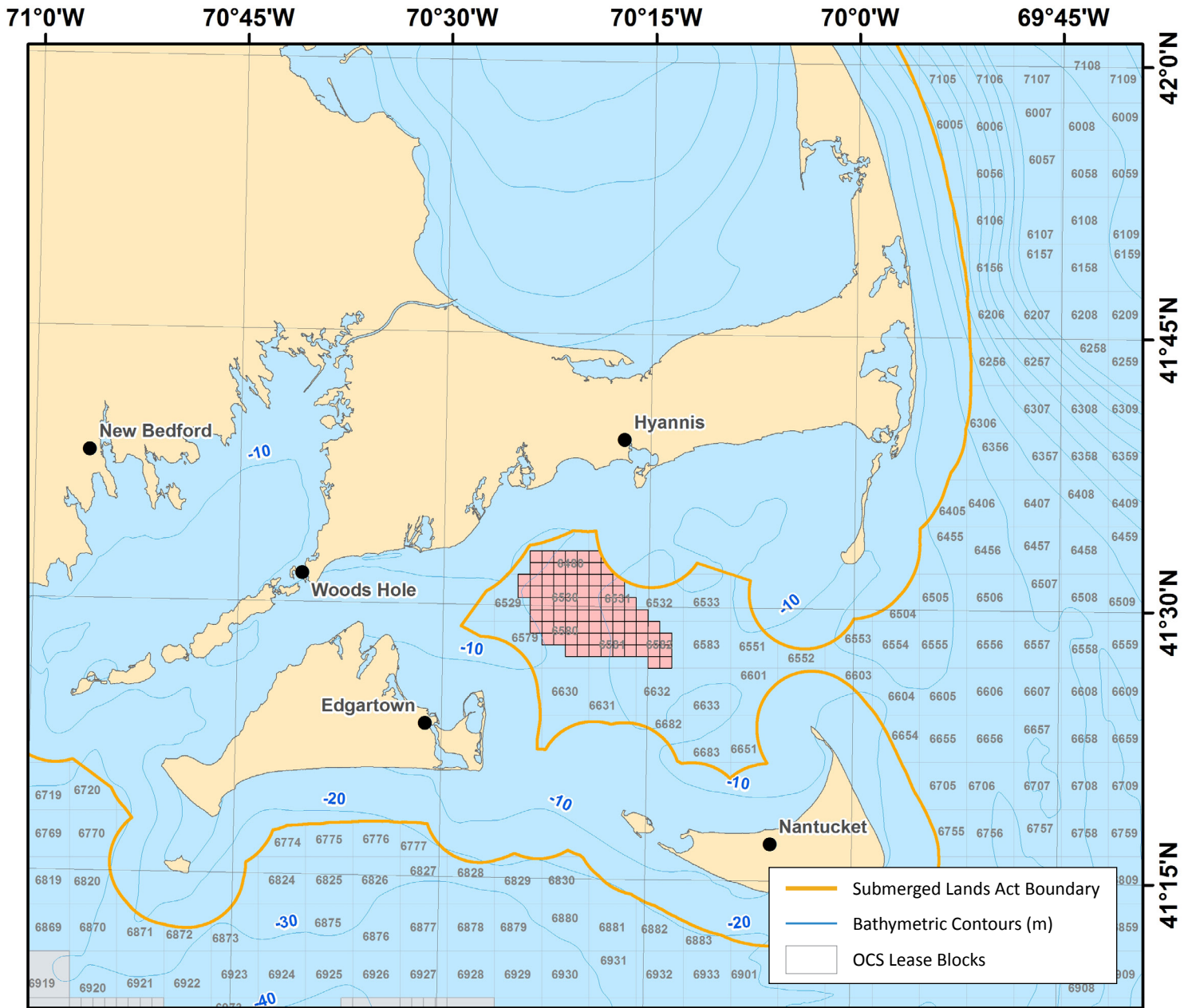
**Lease Date:** The effective date of the lease

**Acres:** The total acreage of the lease area

## Table of Contents

<b>Massachusetts OCS-A 0478</b> .....	<b>4</b>
<b>Massachusetts OCS-A 0501</b> .....	<b>5</b>
<b>Massachusetts OCS-A 0500</b> .....	<b>6</b>
<b>Rhode Island/Massachusetts OCS-A 0487</b> .....	<b>7</b>
<b>Rhode Island/Massachusetts OCS-A 0486</b> .....	<b>8</b>
<b>New York OCS-A 0512</b> .....	<b>9</b>
<b>New Jersey OCS-A 0499</b> .....	<b>10</b>
<b>New Jersey OCS-A 0498</b> .....	<b>11</b>
<b>Delaware OCS-A 0482</b> .....	<b>12</b>
<b>Maryland OCS-A 0489</b> .....	<b>13</b>
<b>Maryland OCS-A 0490</b> .....	<b>14</b>
<b>Virginia OCS-A 0483</b> .....	<b>15</b>
<b>Virginia OCS-A 0497</b> .....	<b>16</b>





Coordinate System: GCS North American 1983 UTM Zone 19

[www.boem.gov/Commercial-Wind-Leasing-Offshore-Massachusetts](http://www.boem.gov/Commercial-Wind-Leasing-Offshore-Massachusetts)

**State:** Massachusetts

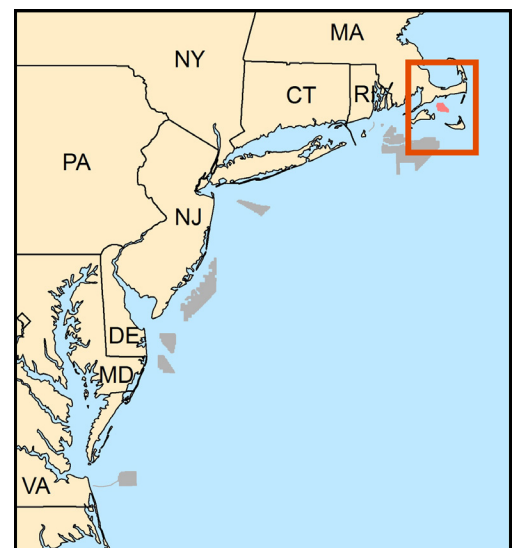
**Lease Number:** OCS-A 0478

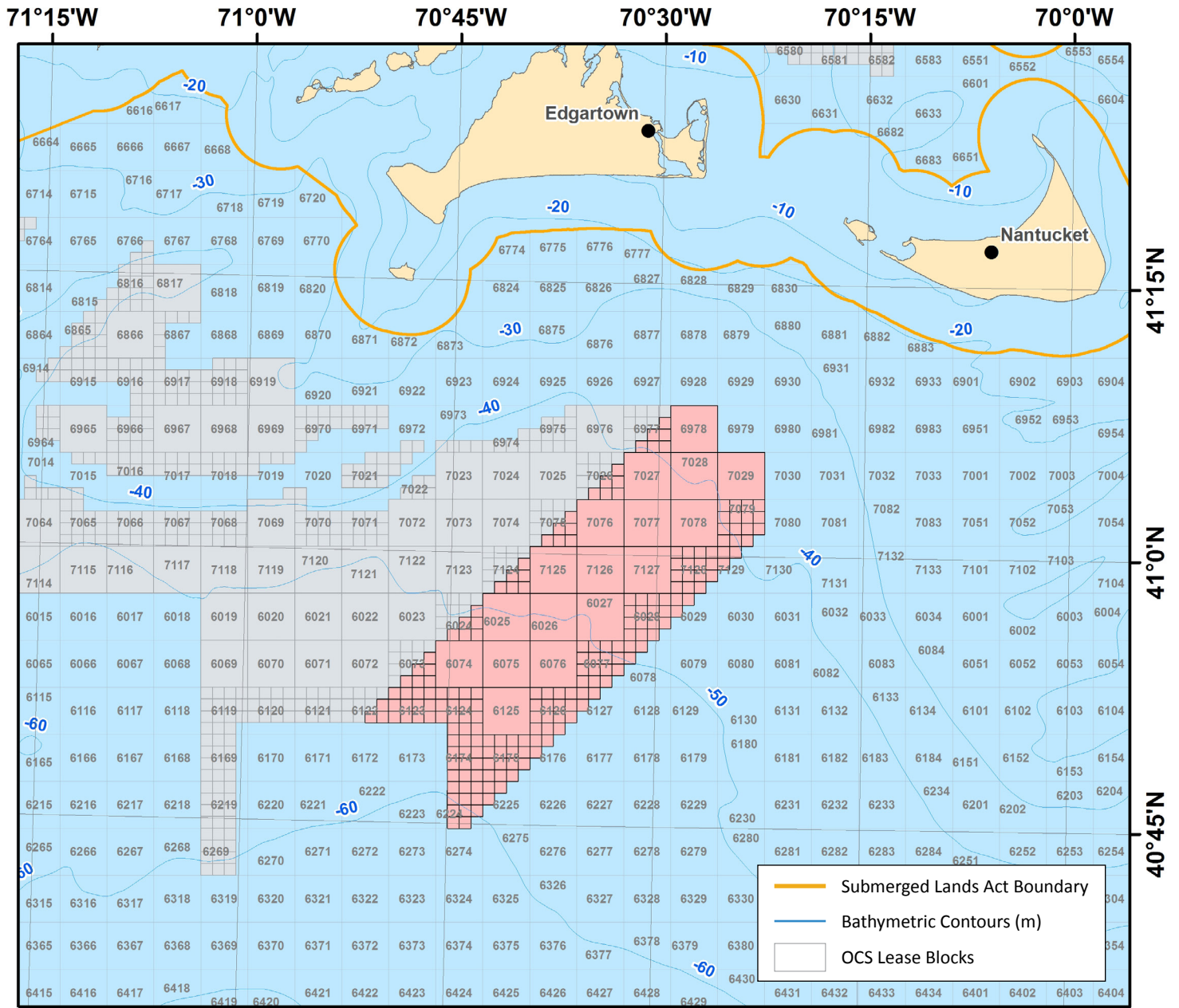
**Lessee:** Cape Wind Associates, LLC

**Lease Type:** Commercial

**Lease Date:** 11/1/2010

**Acres:** 29,426





Coordinate System: GCS North American 1983 UTM Zone 19

[www.boem.gov/Commercial-Wind-Leasing-Offshore-Massachusetts](http://www.boem.gov/Commercial-Wind-Leasing-Offshore-Massachusetts)

**State:** Massachusetts

**Lease Number:** OCS-A 0501

**Lessee:** Offshore MW LLC

**Lease Type:** Commercial

**Lease Date:** 4/1/2015

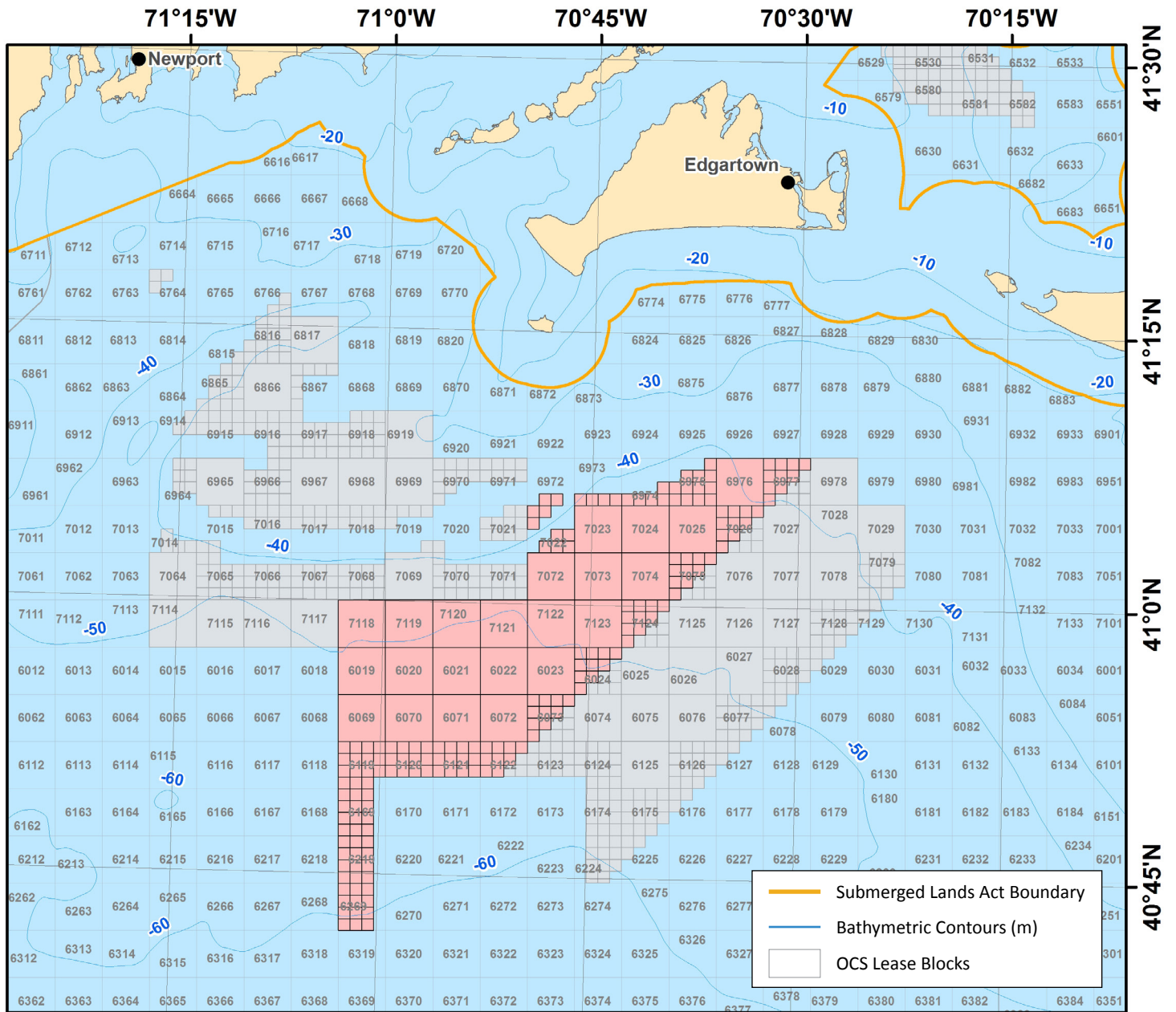
**Acres:** 166,886

December 2016 | 5



**BOEM**  
BUREAU OF OCEAN ENERGY MANAGEMENT





Coordinate System: GCS North American 1983 UTM Zone 19

[www.boem.gov/Commercial-Wind-Leasing-Offshore-Massachusetts](http://www.boem.gov/Commercial-Wind-Leasing-Offshore-Massachusetts)

**State:** Massachusetts

**Lease Number:** OCS-A 0500

**Lessee:** Bay State Wind LLC

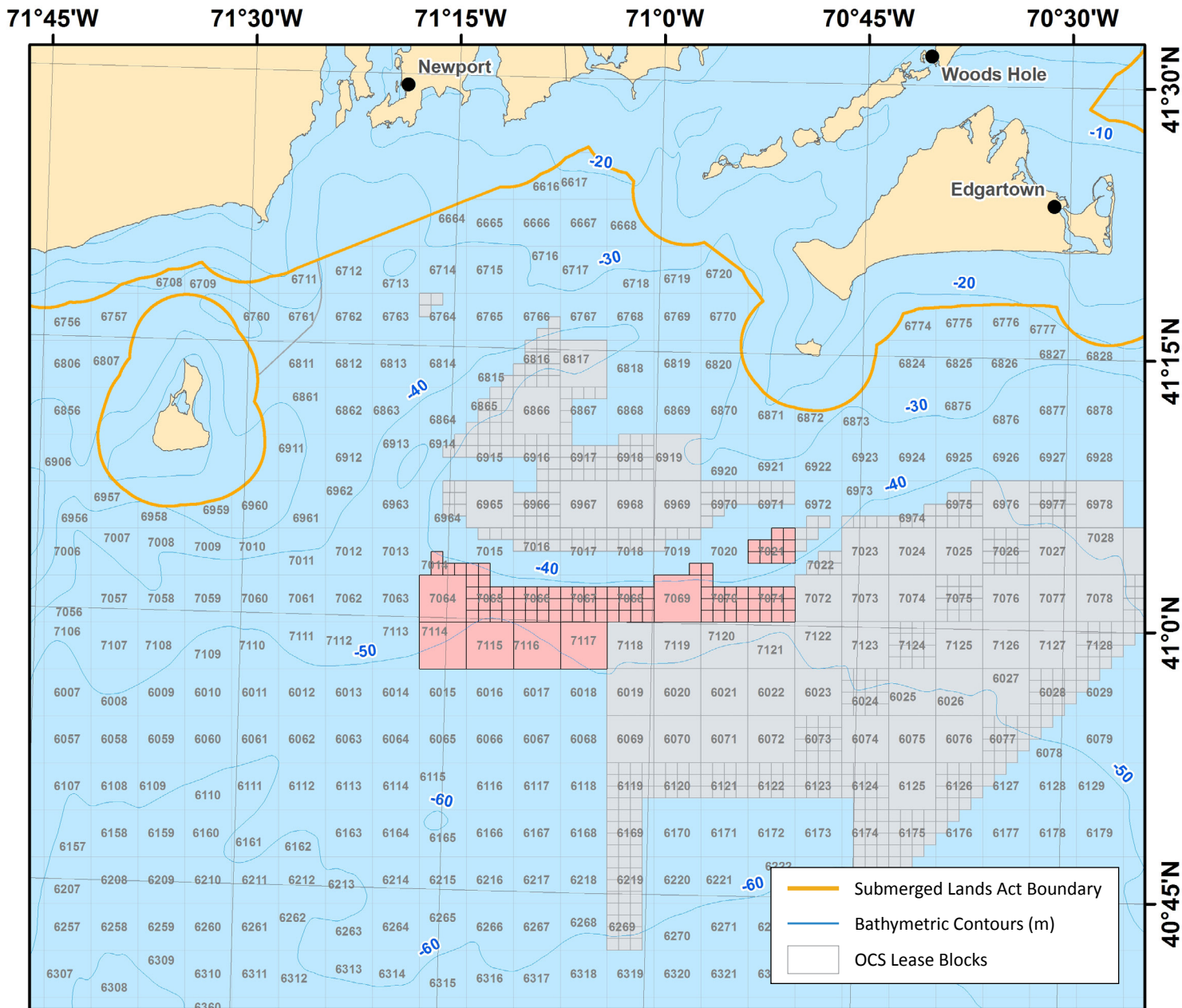
**Lease Type:** Commercial

**Lease Date:** 4/1/2015

**Acres:** 187,523



**BOEM**  
BUREAU OF OCEAN ENERGY MANAGEMENT



Coordinate System: GCS North American 1983 UTM Zone 19

[www.boem.gov/Commercial-Wind-Lease-Rhode-Island-and-Massachusetts](http://www.boem.gov/Commercial-Wind-Lease-Rhode-Island-and-Massachusetts)

**State:** Rhode Island/Massachusetts

**Lease Number:** OCS-A 0487

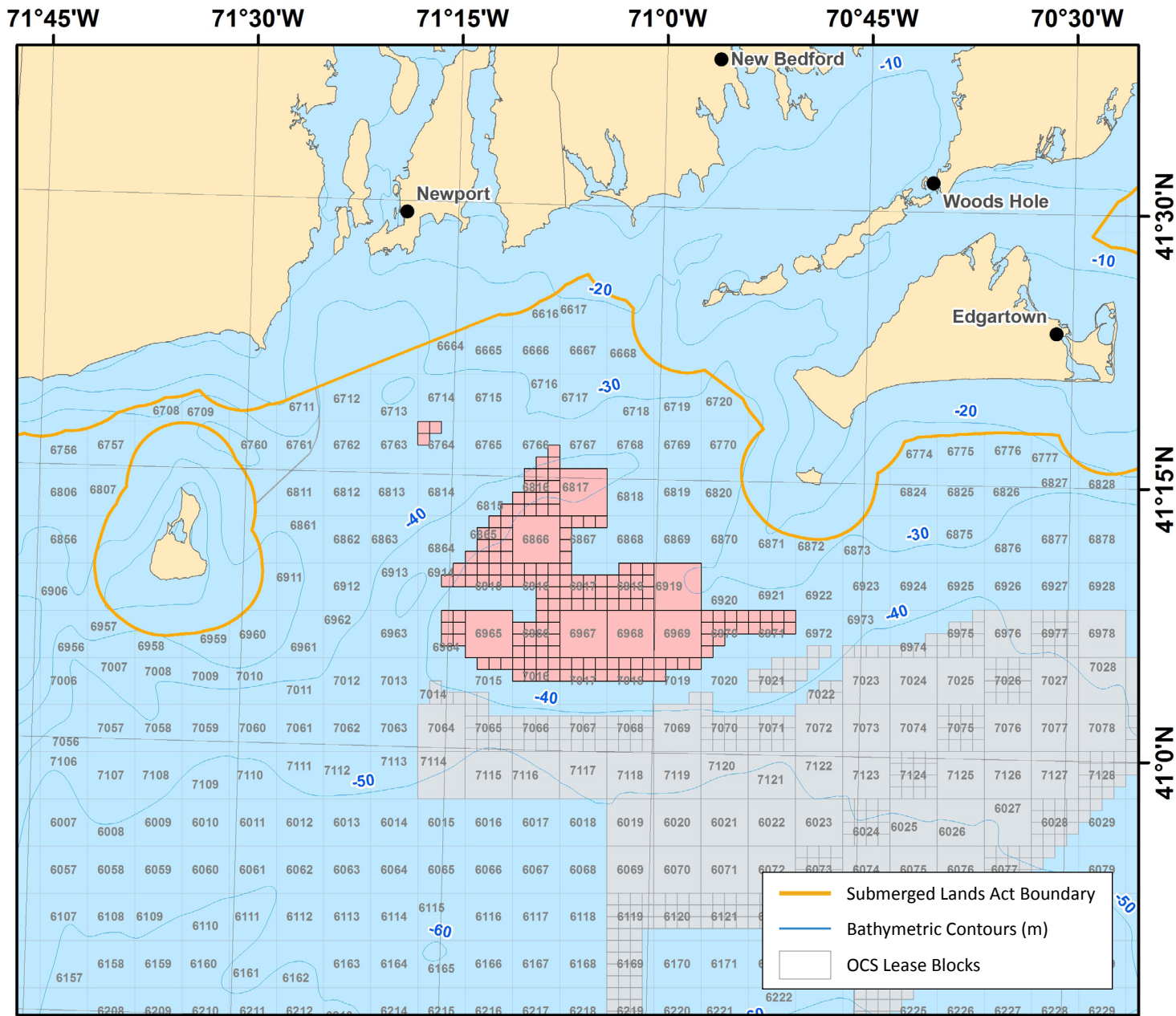
**Lessee:** Deepwater Wind New England, LLC

**Lease Type:** Commercial

**Lease Date:** 10/1/2013

**Acres:** 67,252





Coordinate System: GCS North American 1983 UTM Zone 19

[www.boem.gov/Commercial-Wind-Lease-Rhode-Island-and-Massachusetts](http://www.boem.gov/Commercial-Wind-Lease-Rhode-Island-and-Massachusetts)

**State:** Rhode Island/Massachusetts

**Lease Number:** OCS-A 0486

**Lessee:** Deepwater Wind New England, LLC

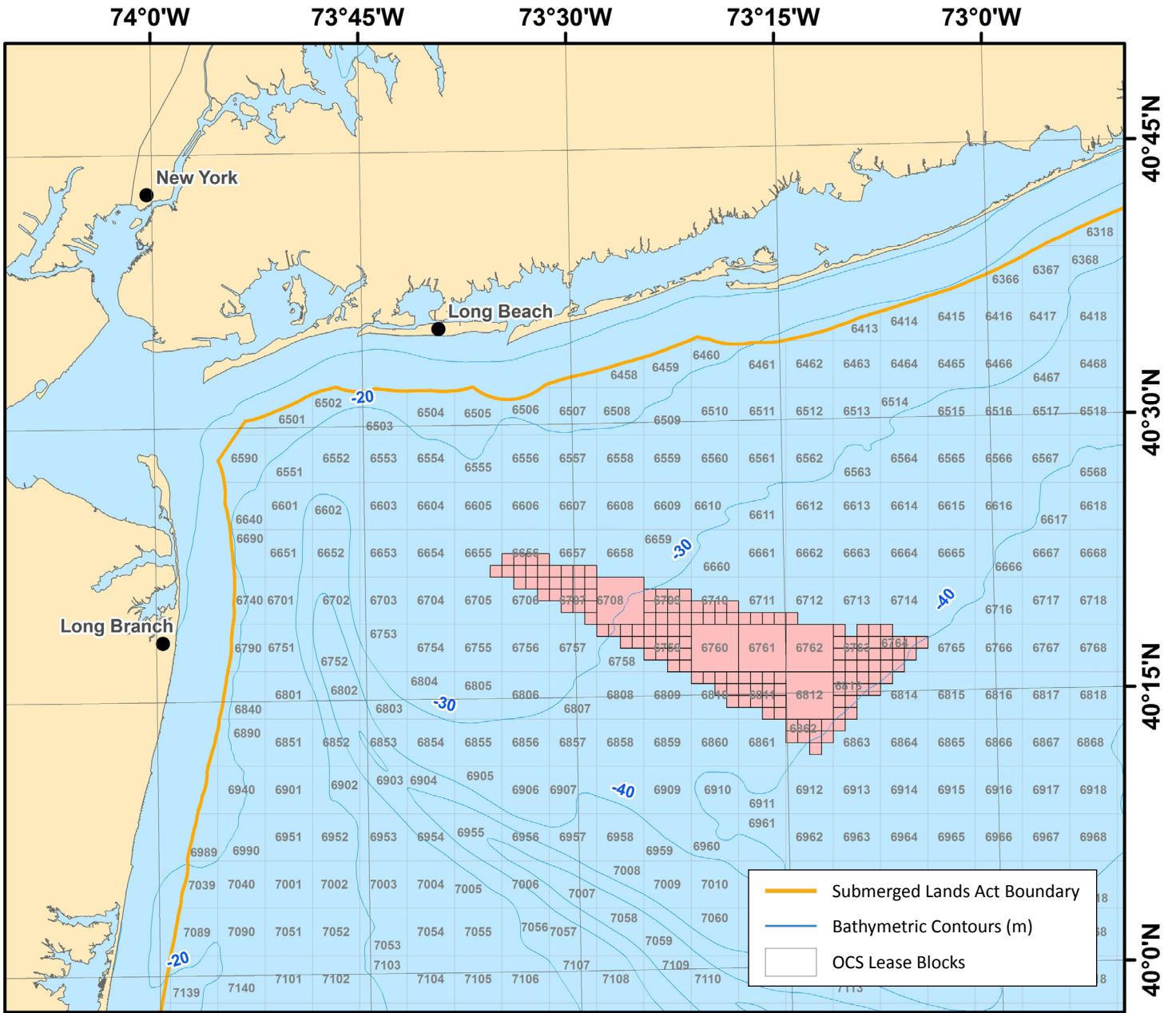
**Lease Type:** Commercial

**Lease Date:** 10/1/2013

**Acres:** 97,498







Coordinate System: GCS North American 1983 UTM Zone 18

[www.boem.gov/New-York/](http://www.boem.gov/New-York/)

**State:** New York

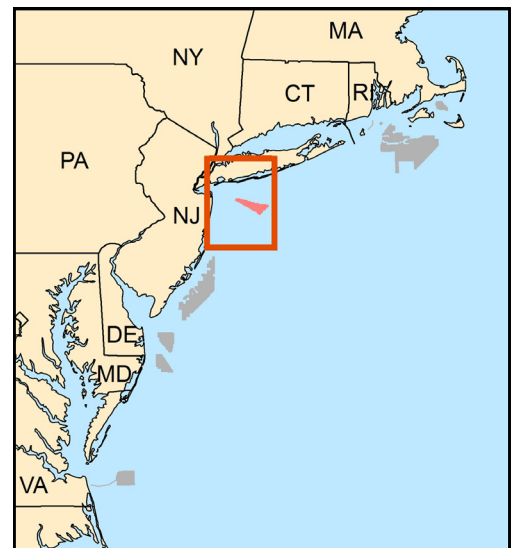
**Lease Number:** OCS-A 0512

**Lessee:** Statoil Wind US LLC

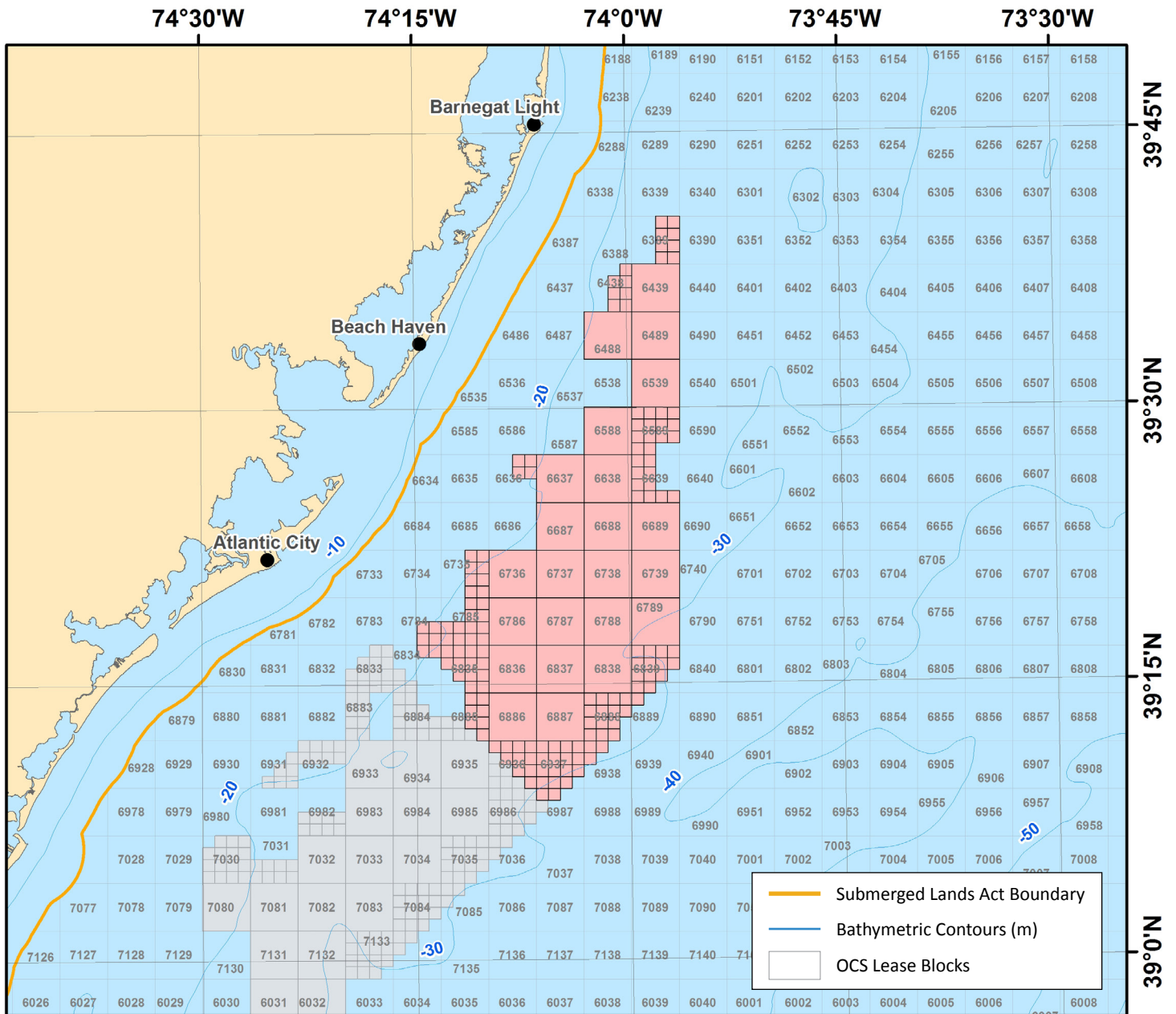
**Lease Type:** Commercial

**Lease Date:** Provisional

**Acres:** 79,350



**BOEM**  
BUREAU OF OCEAN ENERGY MANAGEMENT



Coordinate System: GCS North American 1983 UTM Zone 18

[www.boem.gov/New-Jersey](http://www.boem.gov/New-Jersey)

**State:** New Jersey

**Lease Number:** OCS-A 0499

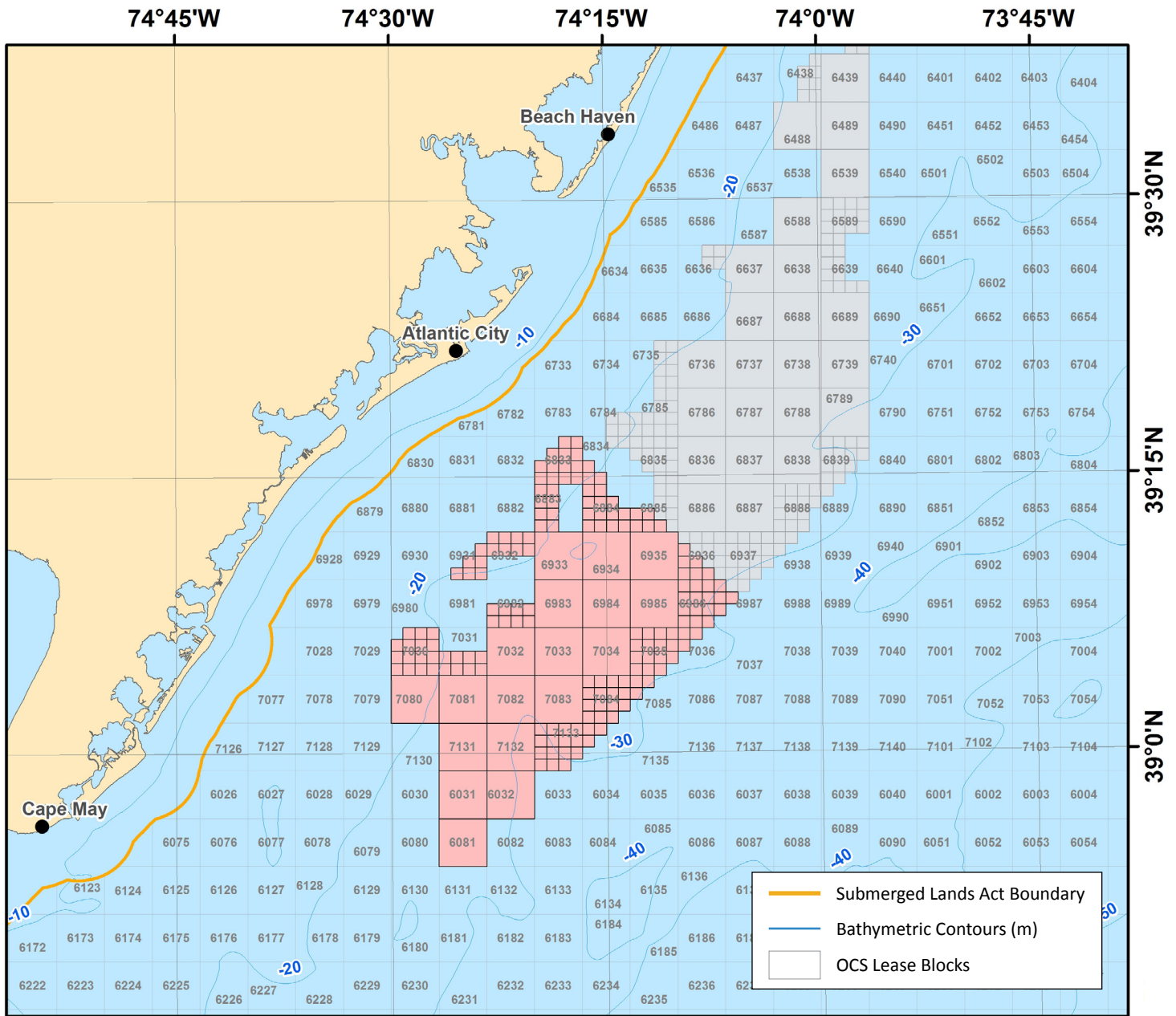
**Lessee:** US Wind Inc.

**Lease Type:** Commercial

**Lease Date:** 3/1/2016

**Acres:** 183,353





Coordinate System: GCS North American 1983 UTM Zone 18

[www.boem.gov/New-Jersey](http://www.boem.gov/New-Jersey)

**State:** New Jersey

**Lease Number:** OCS-A 0498

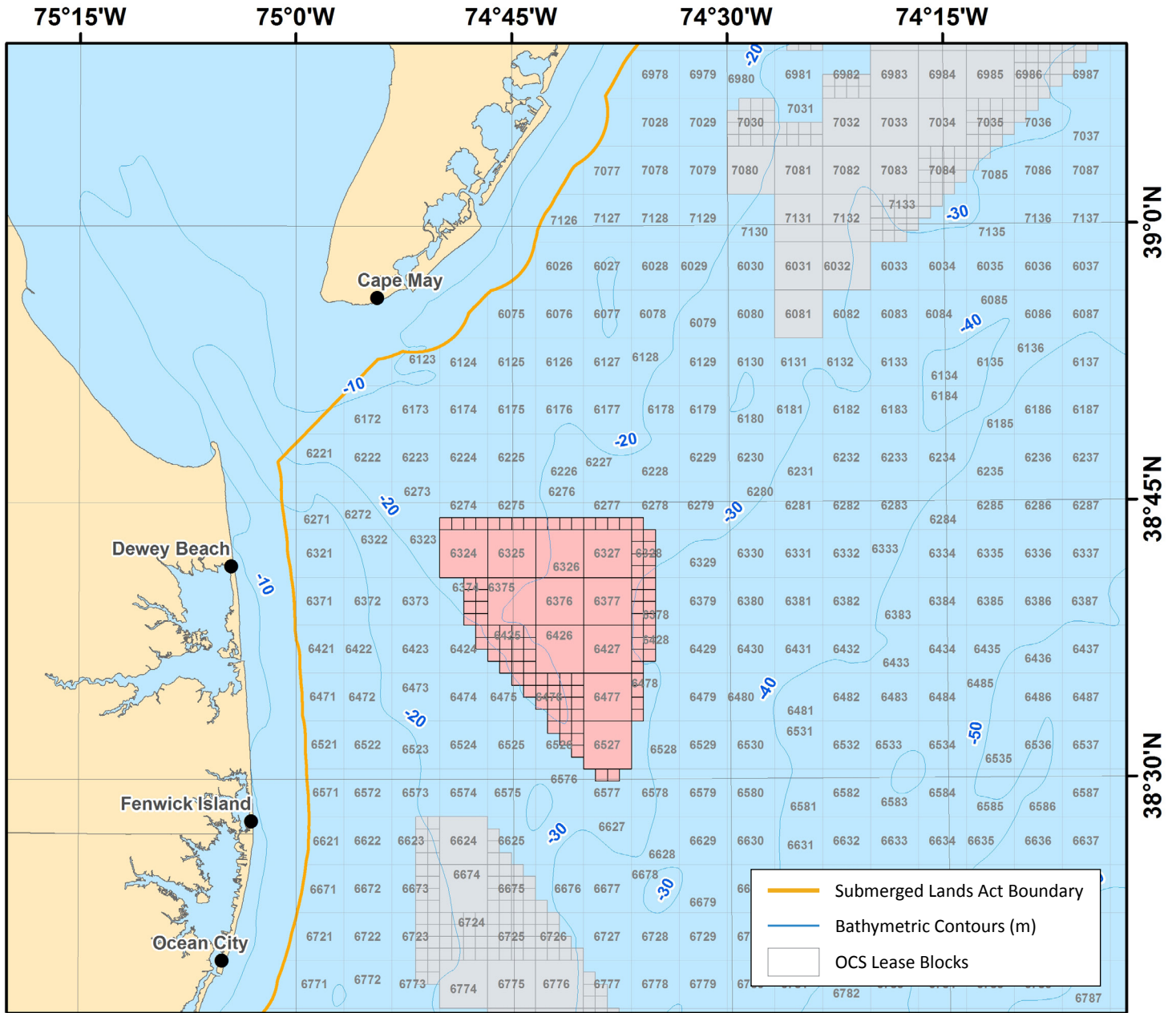
**Lessee:** Ocean Wind LLC

**Lease Type:** Commercial

**Lease Date:** 3/1/2016

**Acres:** 160,480





Coordinate System: GCS North American 1983 UTM Zone 18

[www.boem.gov/Delaware](http://www.boem.gov/Delaware)

**State:** Delaware

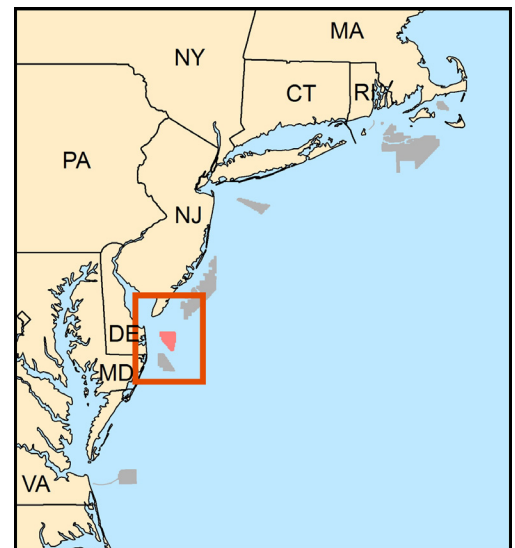
**Lease Number:** OCS-A 0482

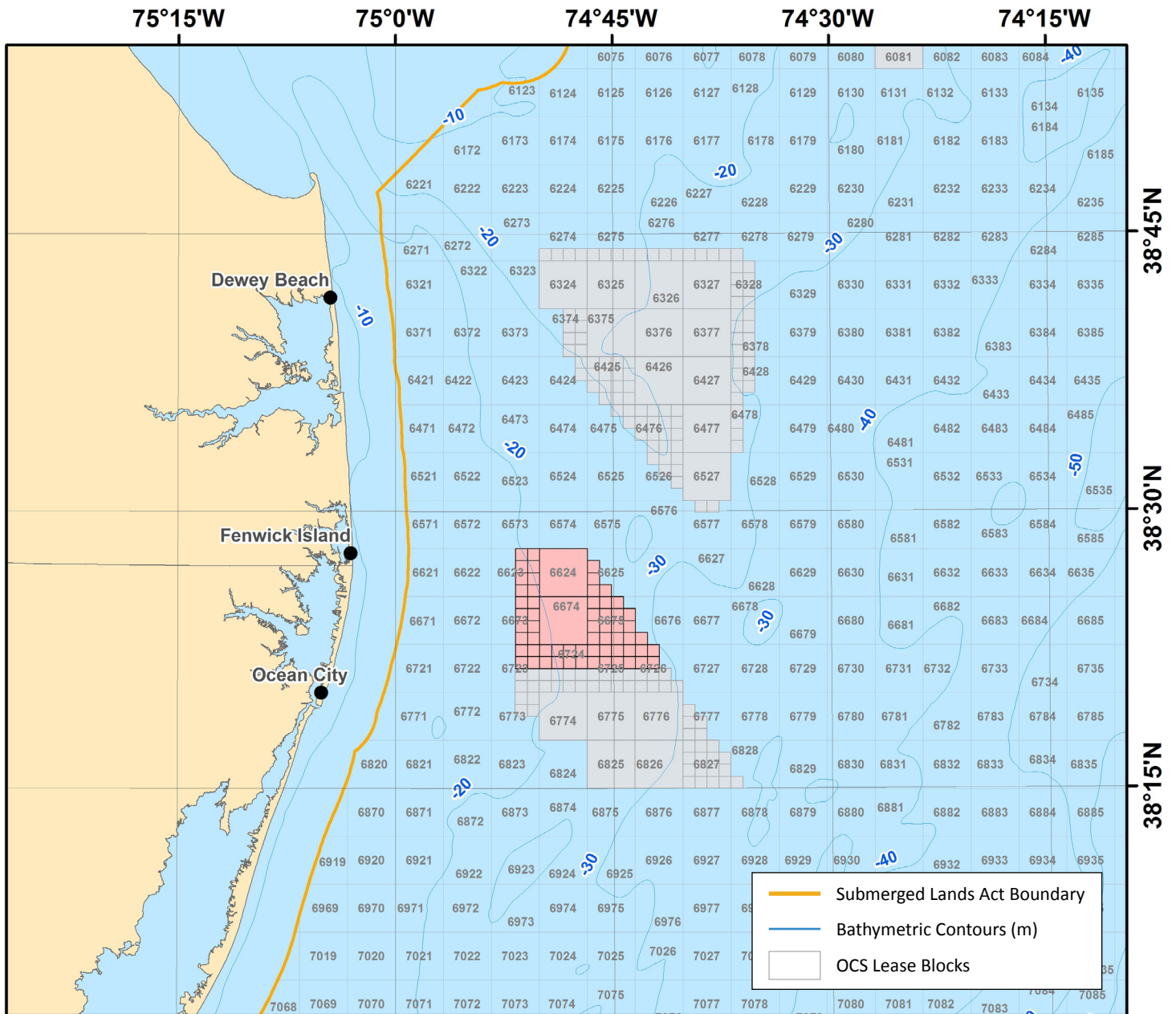
**Lessee:** Bluewater Wind Delaware LLC

**Lease Type:** Commercial

**Lease Date:** 12/1/2012

**Acres:** 96,430





Coordinate System: GCS North American 1983 UTM Zone 18

[www.boem.gov/Maryland](http://www.boem.gov/Maryland)

**State:** Maryland

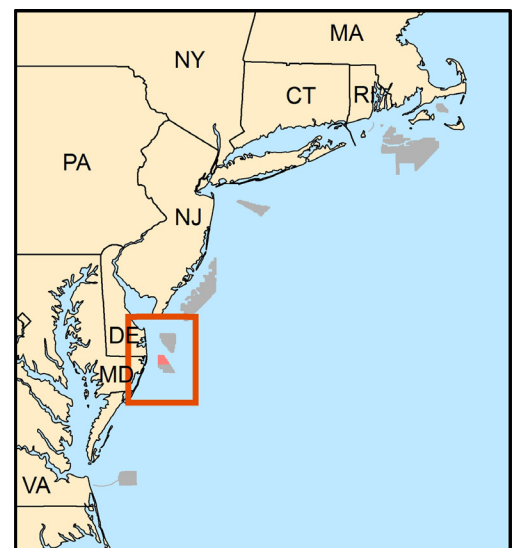
**Lease Number:** OCS-A 0489

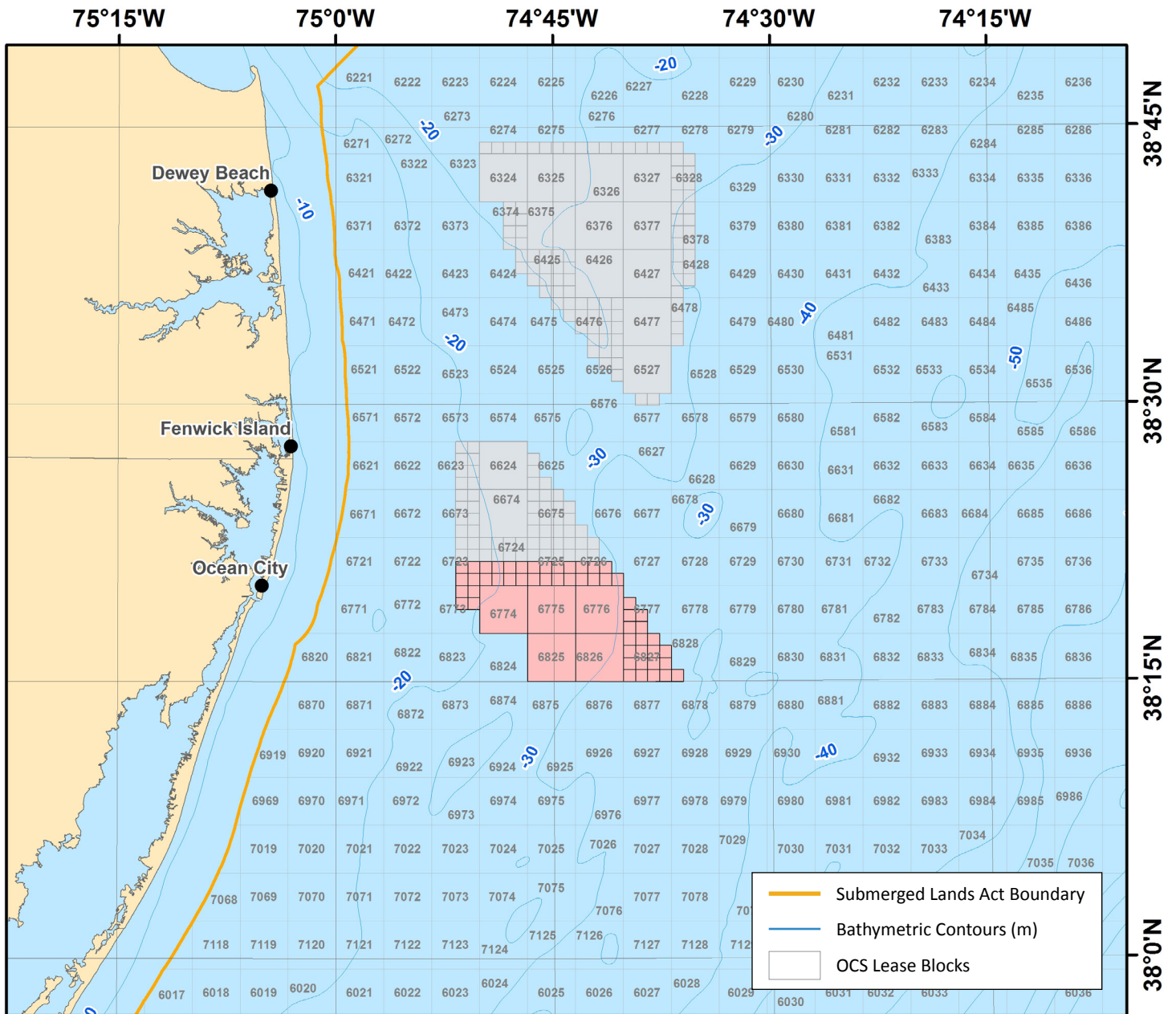
**Lessee:** US Wind Inc.

**Lease Type:** Commercial

**Lease Date:** 12/1/2014

**Acres:** 32,737





Coordinate System: GCS North American 1983 UTM Zone 18

[www.boem.gov/Maryland](http://www.boem.gov/Maryland)

**State:** Maryland

**Lease Number:** OCS-A 0490

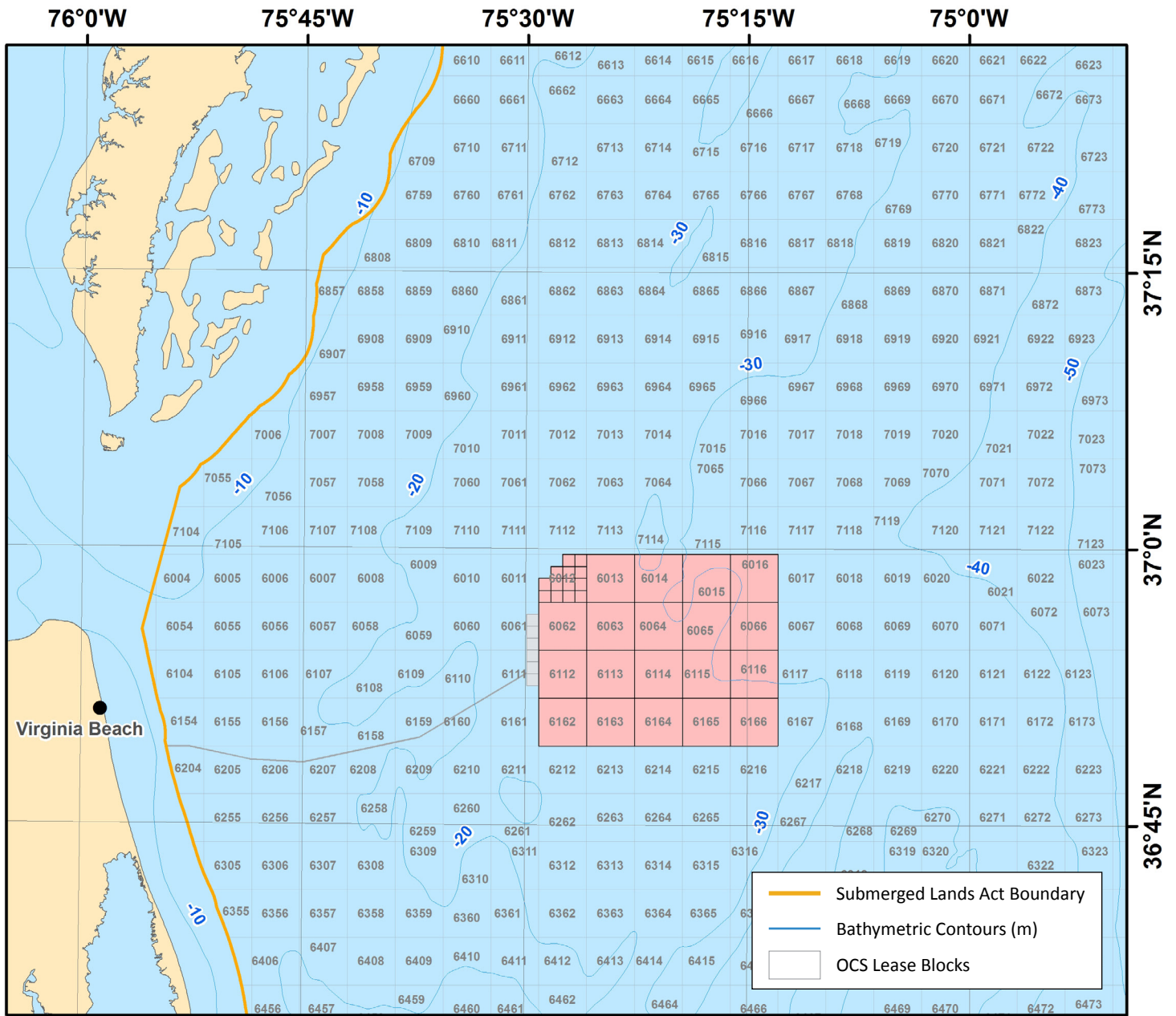
**Lessee:** US Wind Inc.

**Lease Type:** Commercial

**Lease Date:** 12/1/2014

**Acres:** 46,970





Coordinate System: GCS North American 1983 UTM Zone 18

[www.boem.gov/Renewable-Energy-Program/Commercial-Lease-Offshore-VA](http://www.boem.gov/Renewable-Energy-Program/Commercial-Lease-Offshore-VA)

**State:** Virginia

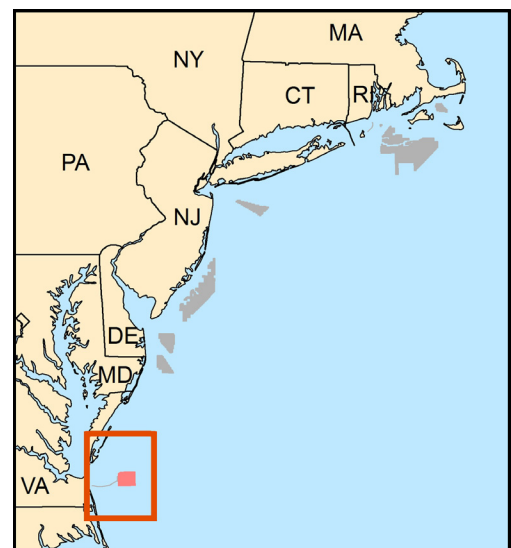
**Lease Number:** OCS-A 0483

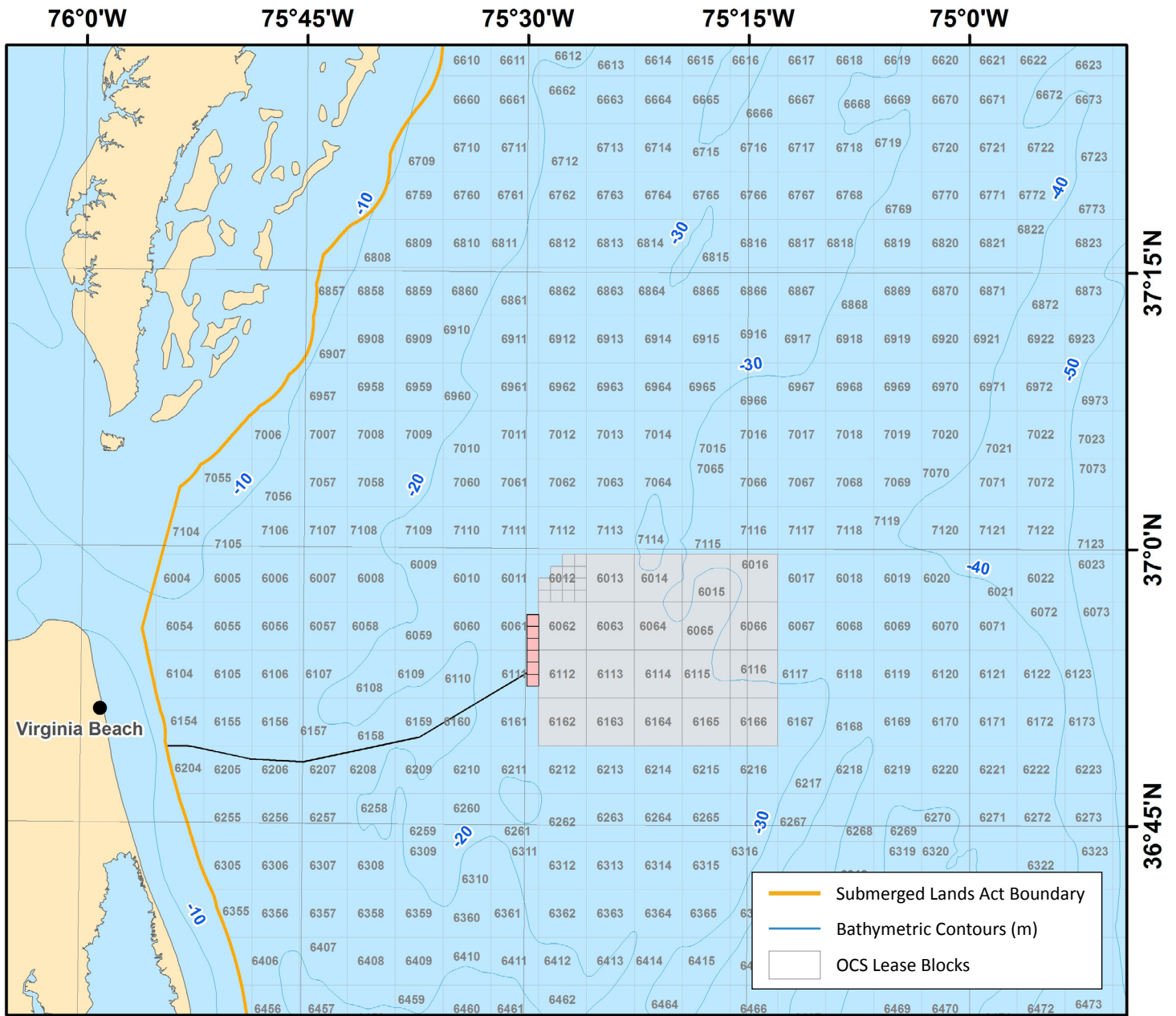
**Lessee:** Virginia Electric and Power Company

**Lease Type:** Commercial

**Lease Date:** 11/1/2013

**Acres:** 112,799





Coordinate System: GCS North American 1983 UTM Zone 18

[www.boem.gov/VOWTAP](http://www.boem.gov/VOWTAP)

**State:** Virginia

**Lease Number:** OCS-A 0497

**Lessee:** Commonwealth of Virginia, Department of Mines, Minerals & Energy

**Lease Type:** Research

**Lease Date:** 4/1/2015

**Acres:** 2,135

