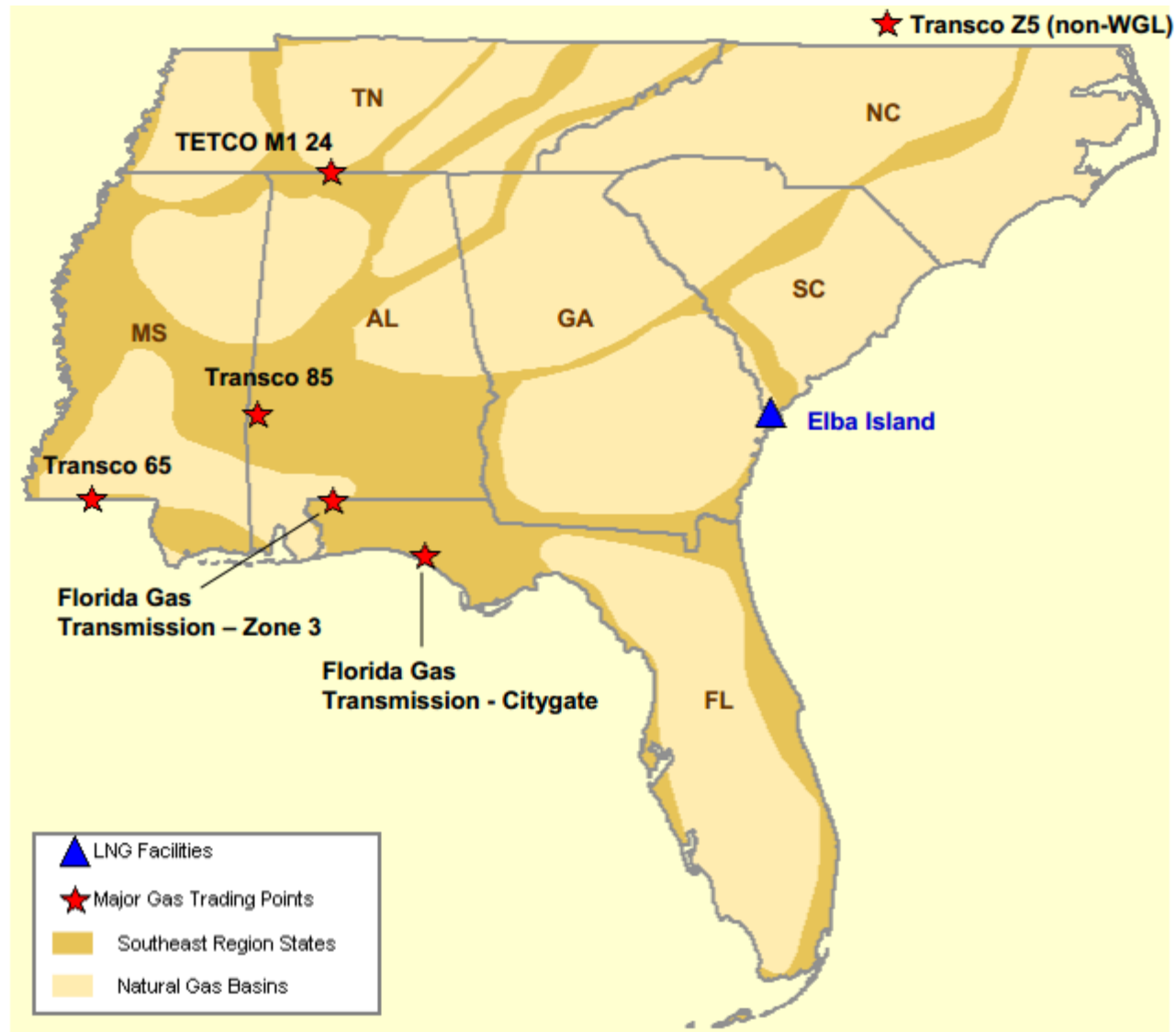


Southeast Natural Gas Region



Southeast Day-Ahead Prices Averaged Annually/Seasonally

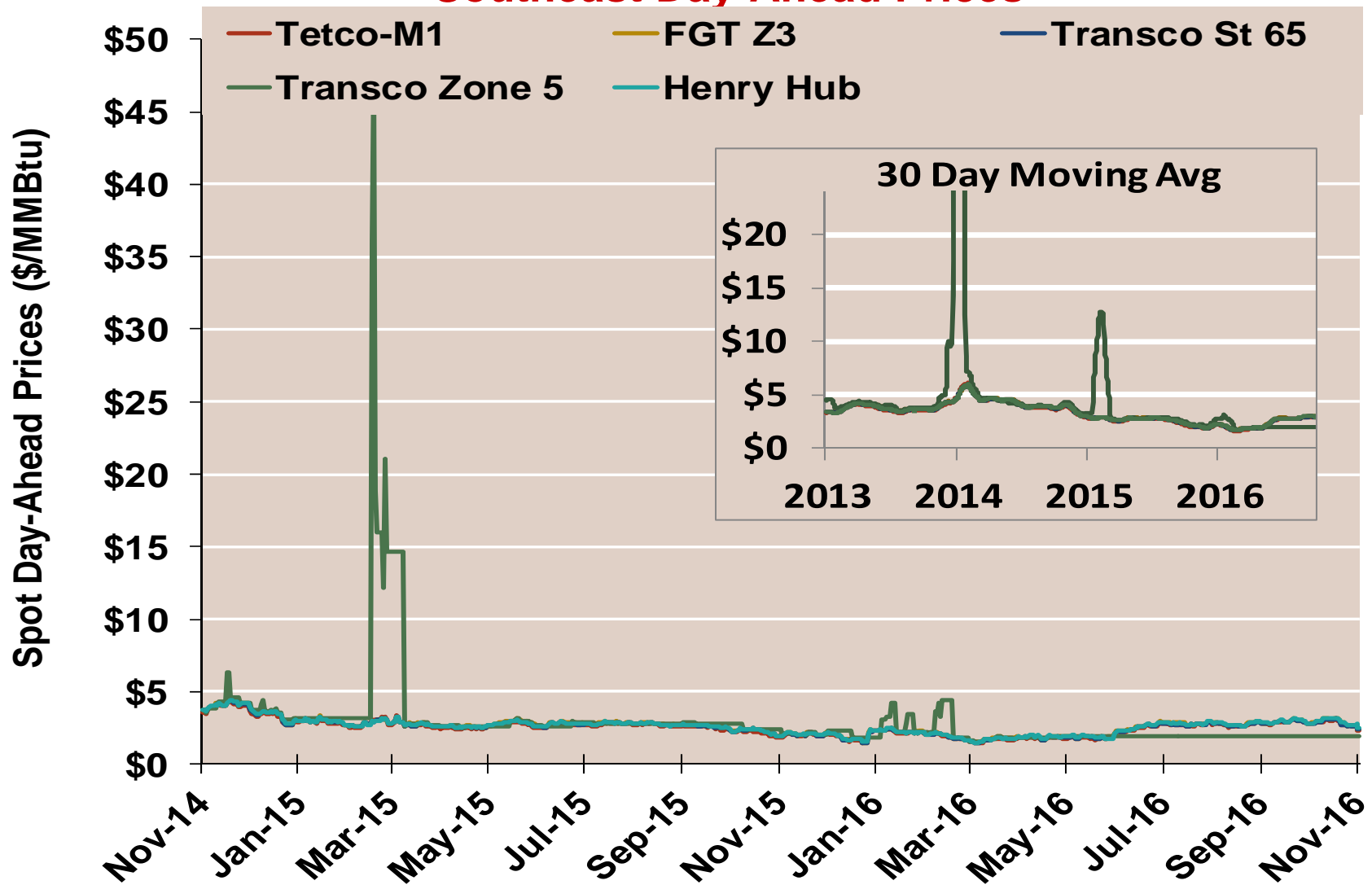
	Average Day Ahead Prices (\$/MMBtu)	FGT Z3	Tetco-M1	Transco St 65	Transco Zone 5	Henry Hub
2013	Annual	3.77	3.66	3.71	4.07	3.72
	Summer	3.83	3.68	3.74	3.95	3.76
	Winter 2013/2014	4.62	4.61	4.60	12.42	4.61
2014	Annual	4.34	4.28	4.30	7.50	4.32
	Summer	4.21	4.12	4.16	4.17	4.18
	Winter 2014/2015	3.21	3.14	3.19	5.40	3.21
2015	Annual	2.62	2.53	2.58	3.53	2.60
	Summer	2.69	2.58	2.65	2.72	2.67
	Winter 2015/2016	1.99	1.91	1.95	2.28	1.97
2016 YTD	Annual	2.38	2.30	2.33	2.09	2.38
	Summer	2.54	2.47	2.50	1.96	2.55
	Winter 2016/2017	2.42	2.29	2.38	1.97	2.53

Notes:

Source: Derived from Bloomberg ICE data

Updated Nov-2016

Southeast Day-Ahead Prices

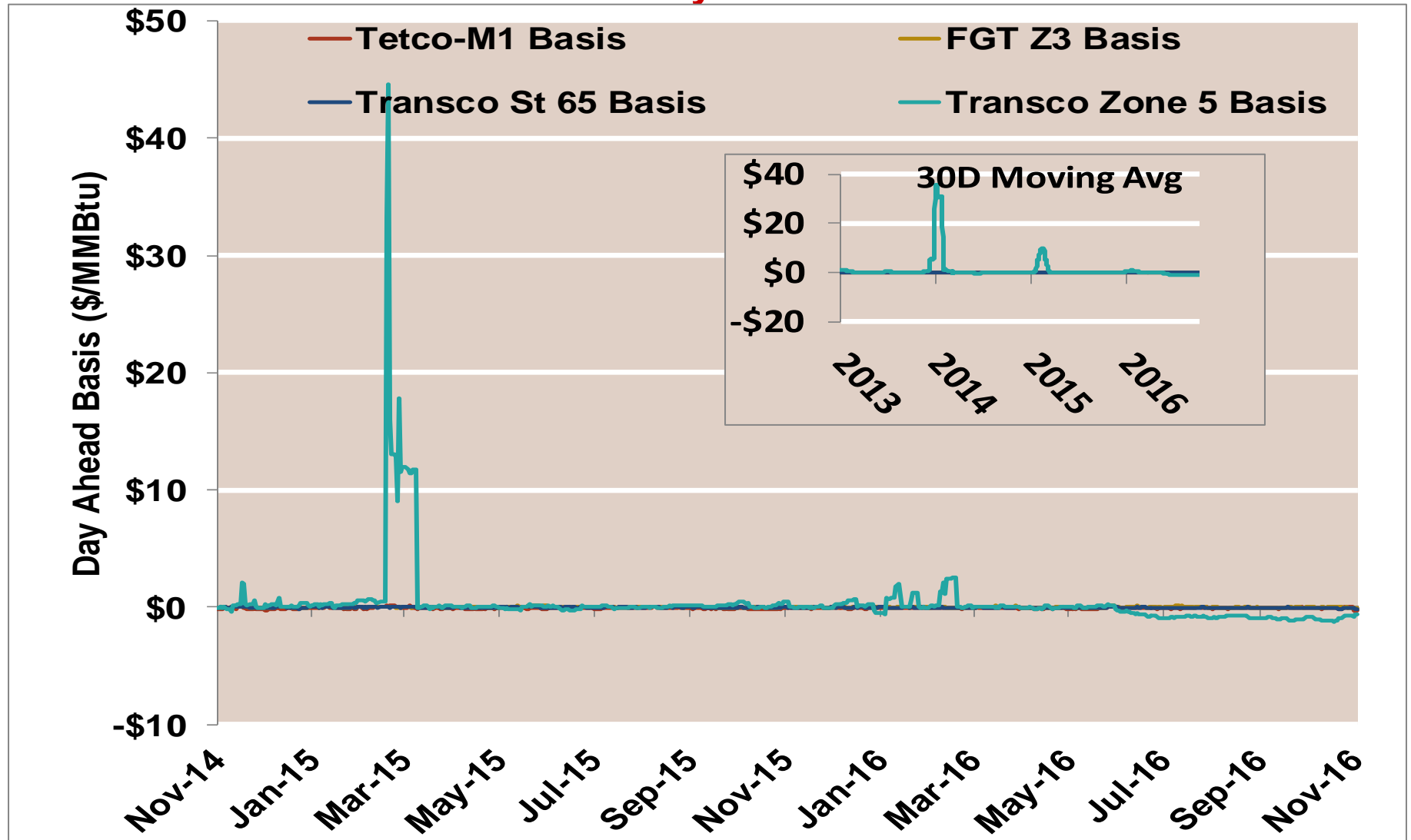


Notes:

Source: Derived from Bloomberg ICE data

Updated Nov-2016

Southeast Day-Ahead Basis

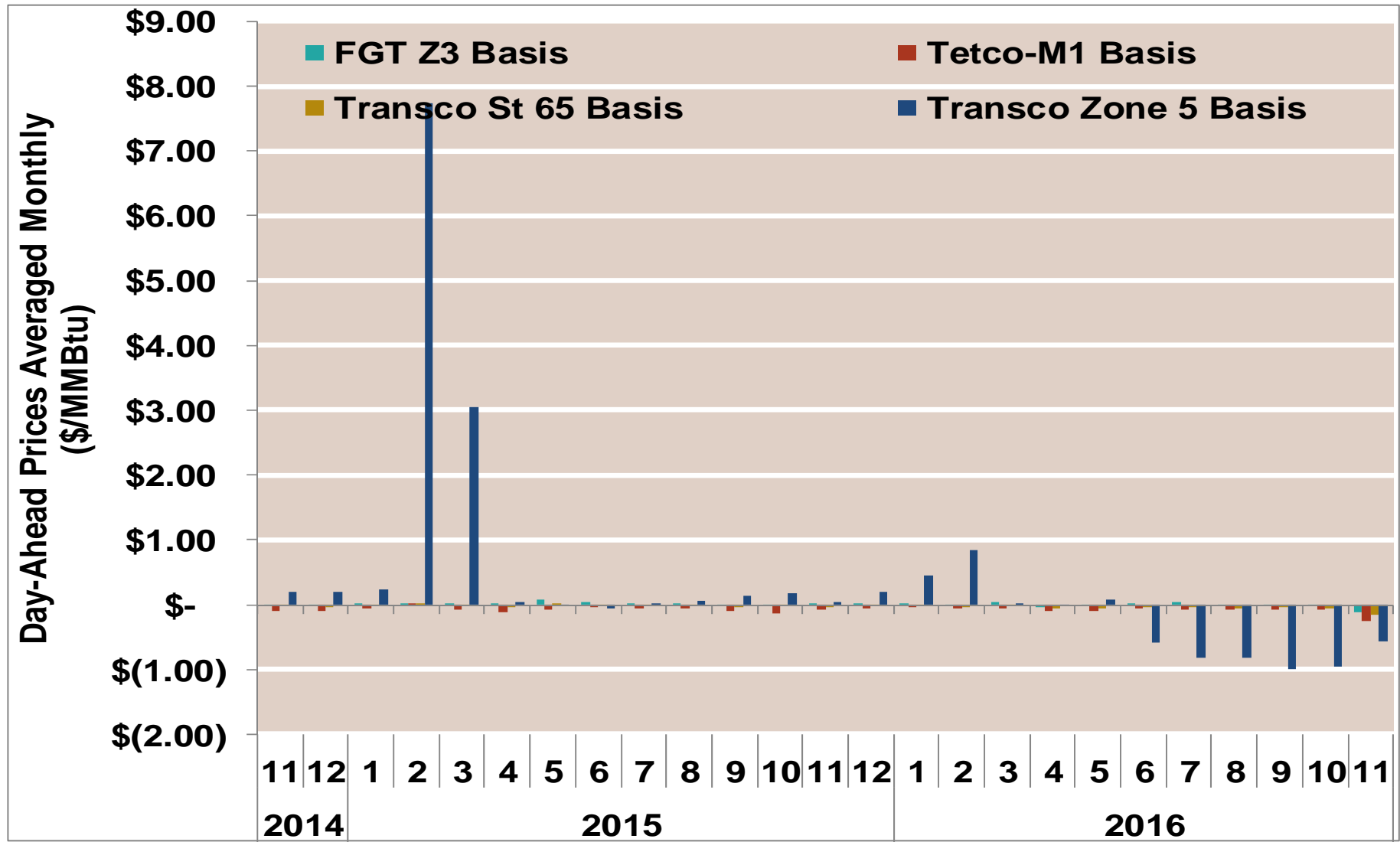


Notes:

Source: Derived from Bloomberg ICE data

Updated Nov-2016

Southeast Basis to Henry Hub Averaged Monthly

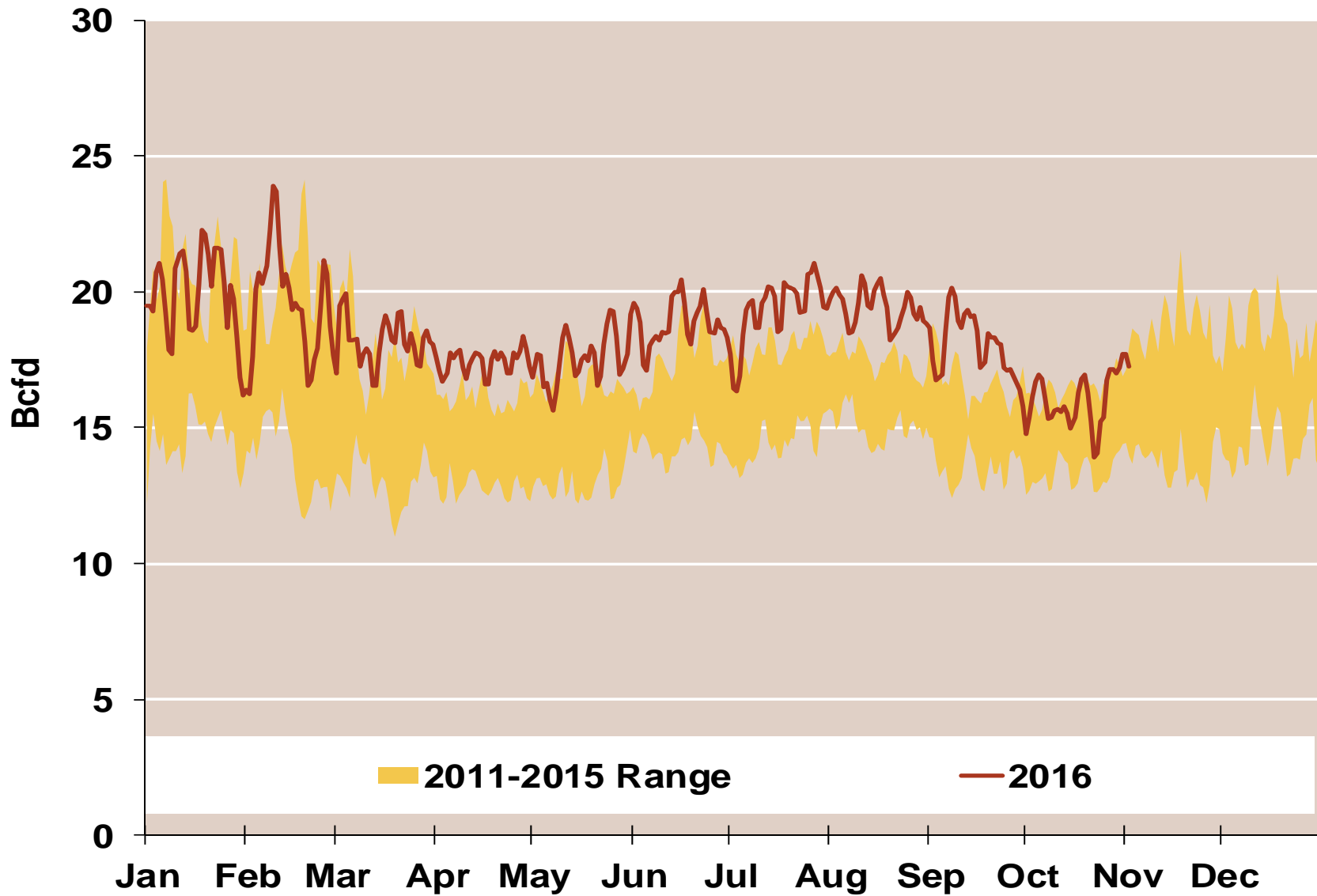


Notes:

Source: Derived from ICE data

Updated Nov-2016

Daily Southeast Natural Gas Demand All Sectors



Source: Derived from *Bentek Energy* data

Southeast Natural Gas Consumption for Power Generation

