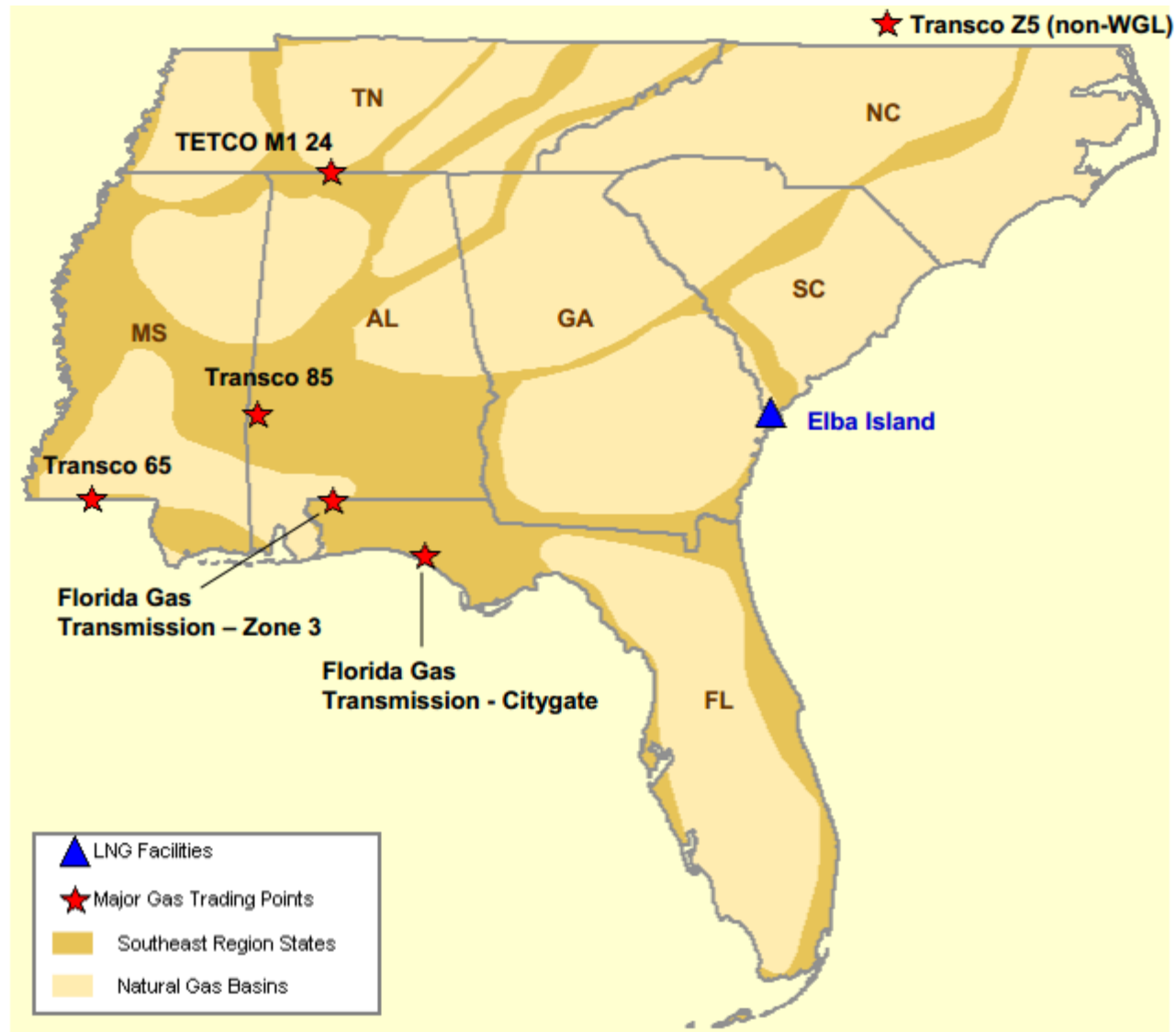


Southeast Natural Gas Region



Southeast Day-Ahead Prices Averaged Annually/Seasonally

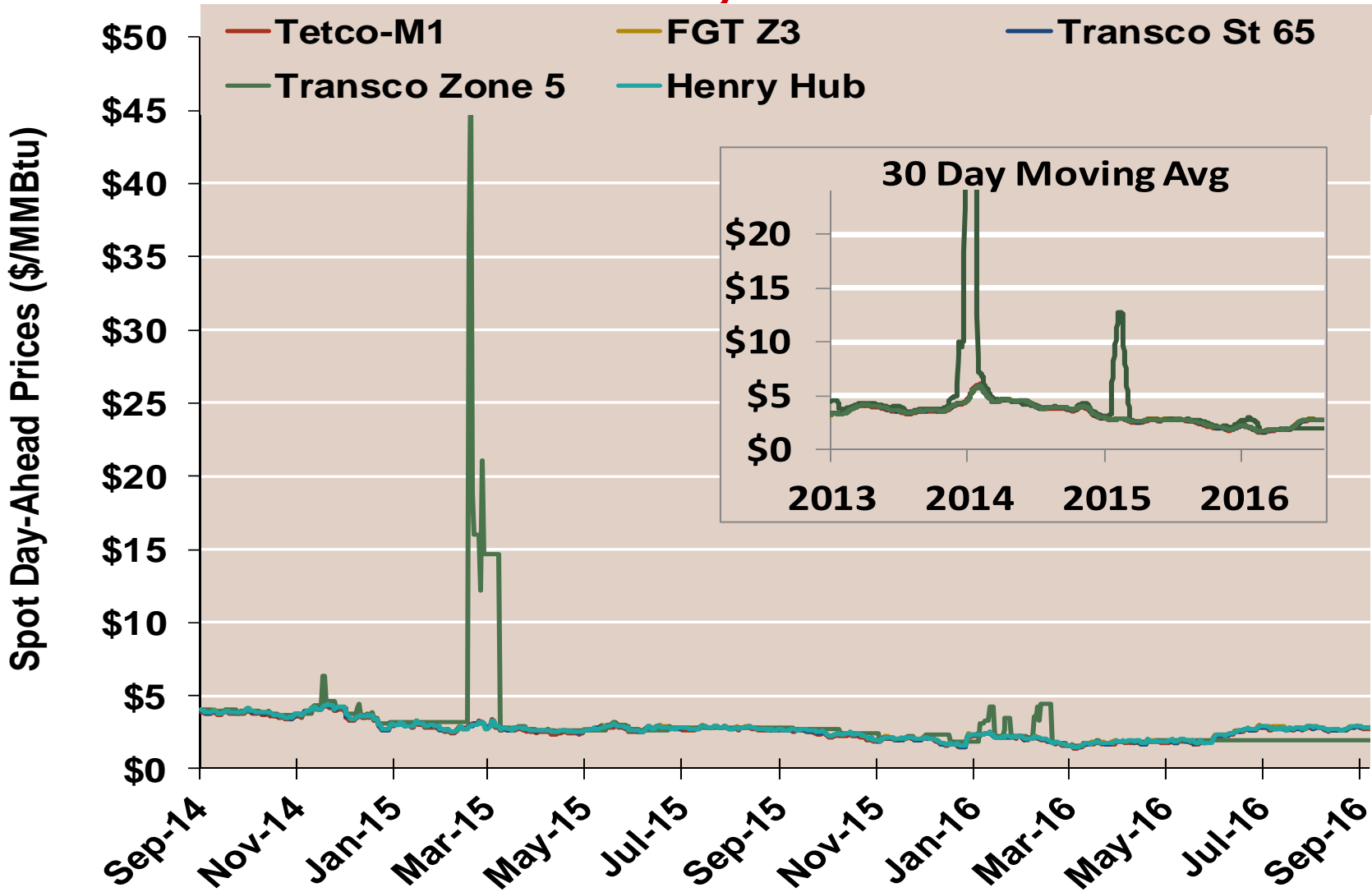
	Average Day Ahead Prices (\$/MMBtu)	FGT Z3	Tetco-M1	Transco St 65	Transco Zone 5	Henry Hub
2013	Annual	3.77	3.66	3.71	4.01	3.72
	Summer	3.83	3.68	3.74	3.88	3.76
	Winter 2013/2014	4.62	4.61	4.60	9.44	4.61
2014	Annual	4.34	4.28	4.30	6.32	4.32
	Summer	4.21	4.12	4.16	4.24	4.18
	Winter 2014/2015	3.21	3.14	3.19	5.57	3.21
2015	Annual	2.62	2.53	2.58	3.58	2.60
	Summer	2.69	2.58	2.65	2.73	2.67
	Winter 2015/2016	1.99	1.91	1.95	2.28	1.97
2016 YTD	Annual	2.11	2.03	2.06	2.16	2.10
	Summer	2.20	2.12	2.16	1.90	2.21
	Winter 2016/2017					

Notes:

Source: Derived from Bloomberg ICE data

Updated Sep-2016

Southeast Day-Ahead Prices

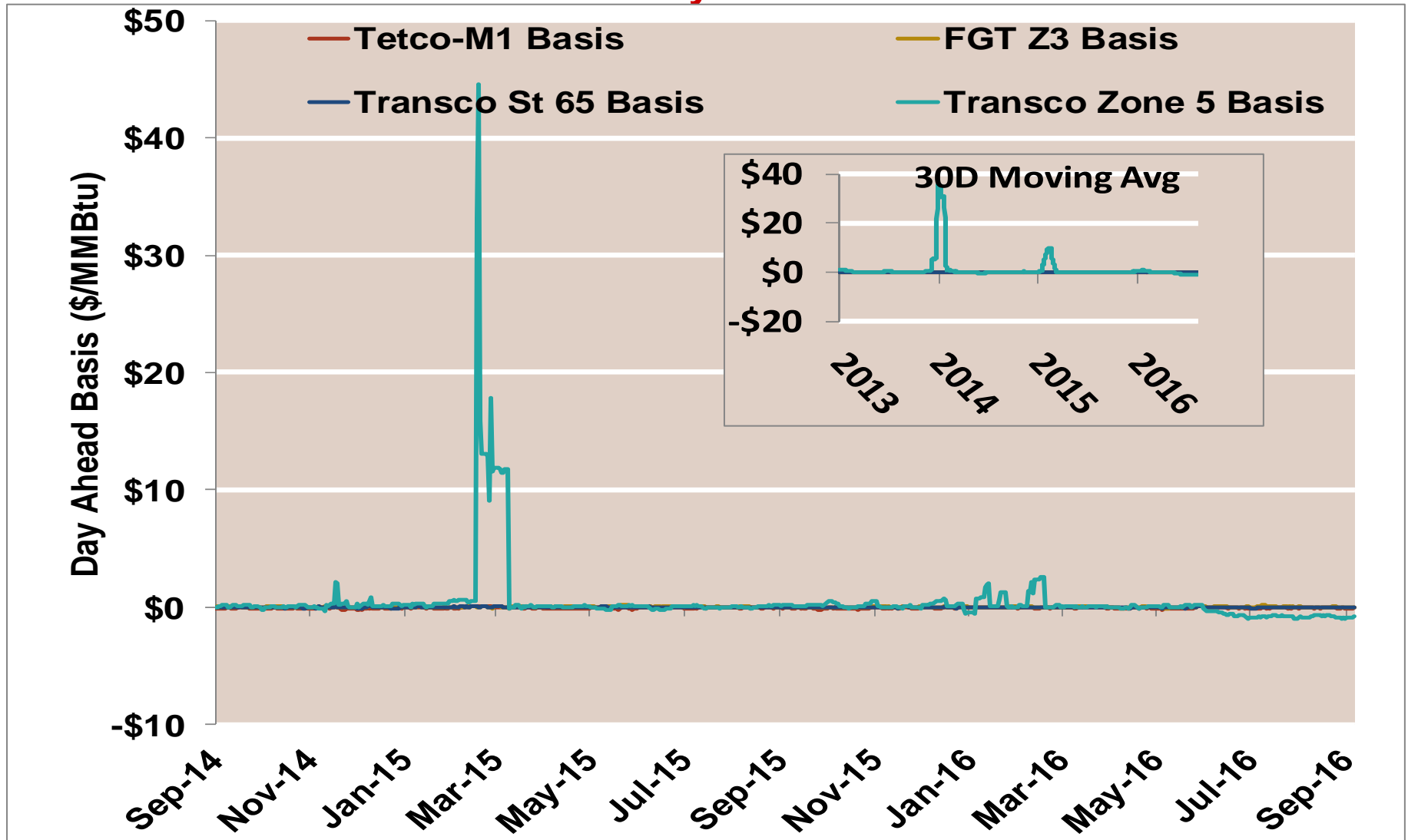


Notes:

Source: Derived from Bloomberg ICE data

Updated Sep-2016

Southeast Day-Ahead Basis

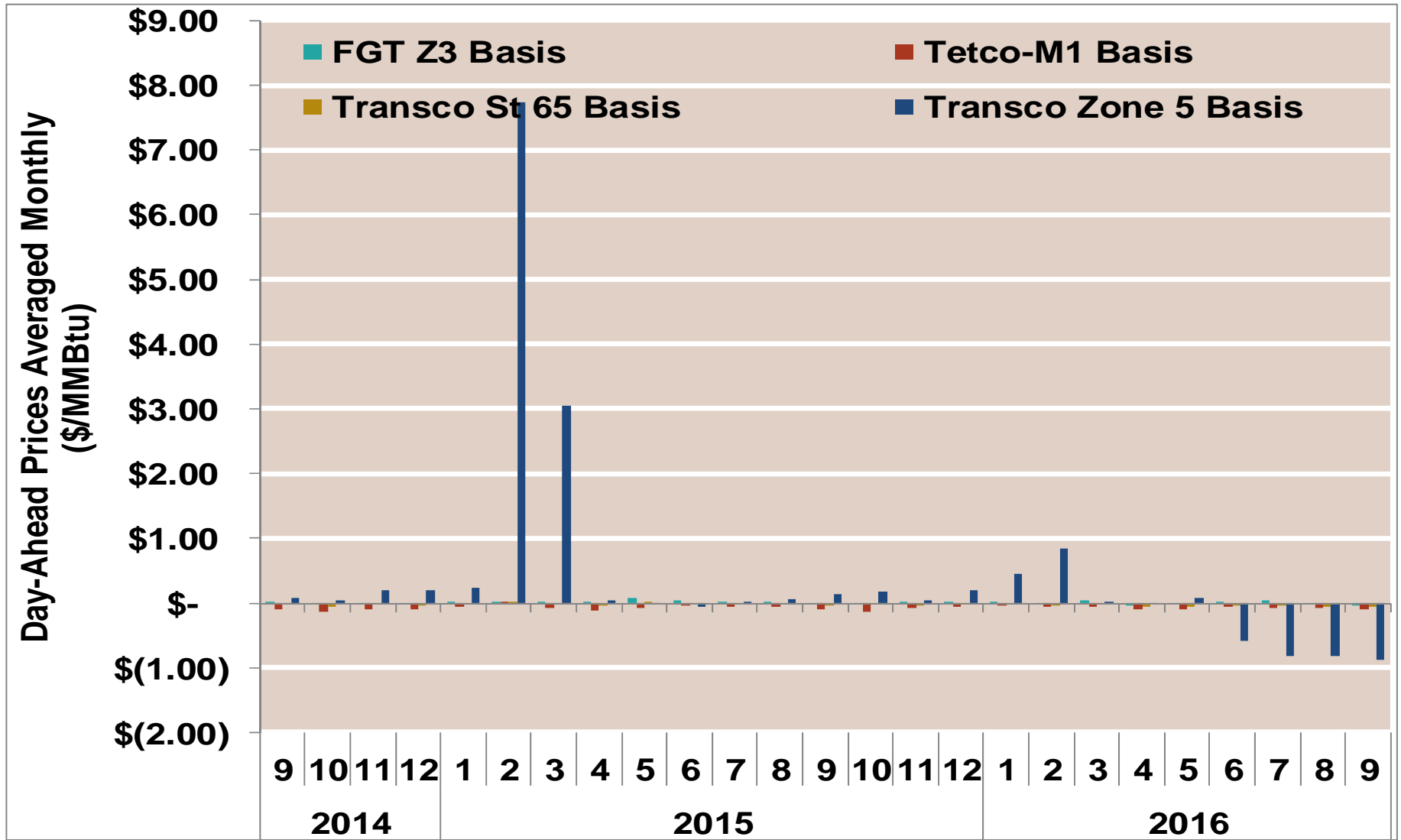


Notes:

Source: Derived from Bloomberg ICE data

Updated Sep-2016

Southeast Basis to Henry Hub Averaged Monthly

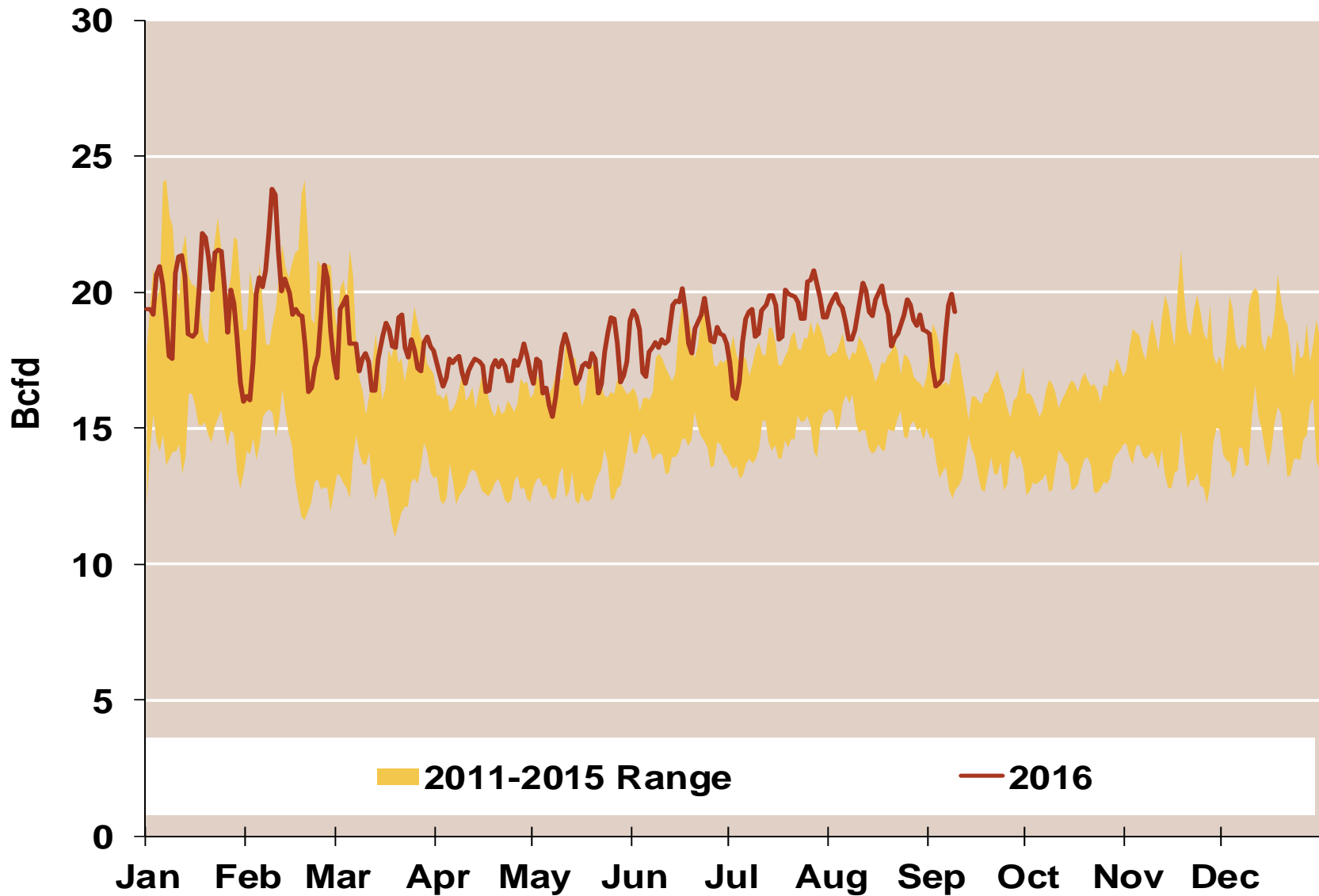


Notes:

Source: Derived from ICE data

Updated Sep-2016

Daily Southeast Natural Gas Demand All Sectors



Source: Derived from *Bentek Energy* data

Southeast Natural Gas Consumption for Power Generation

