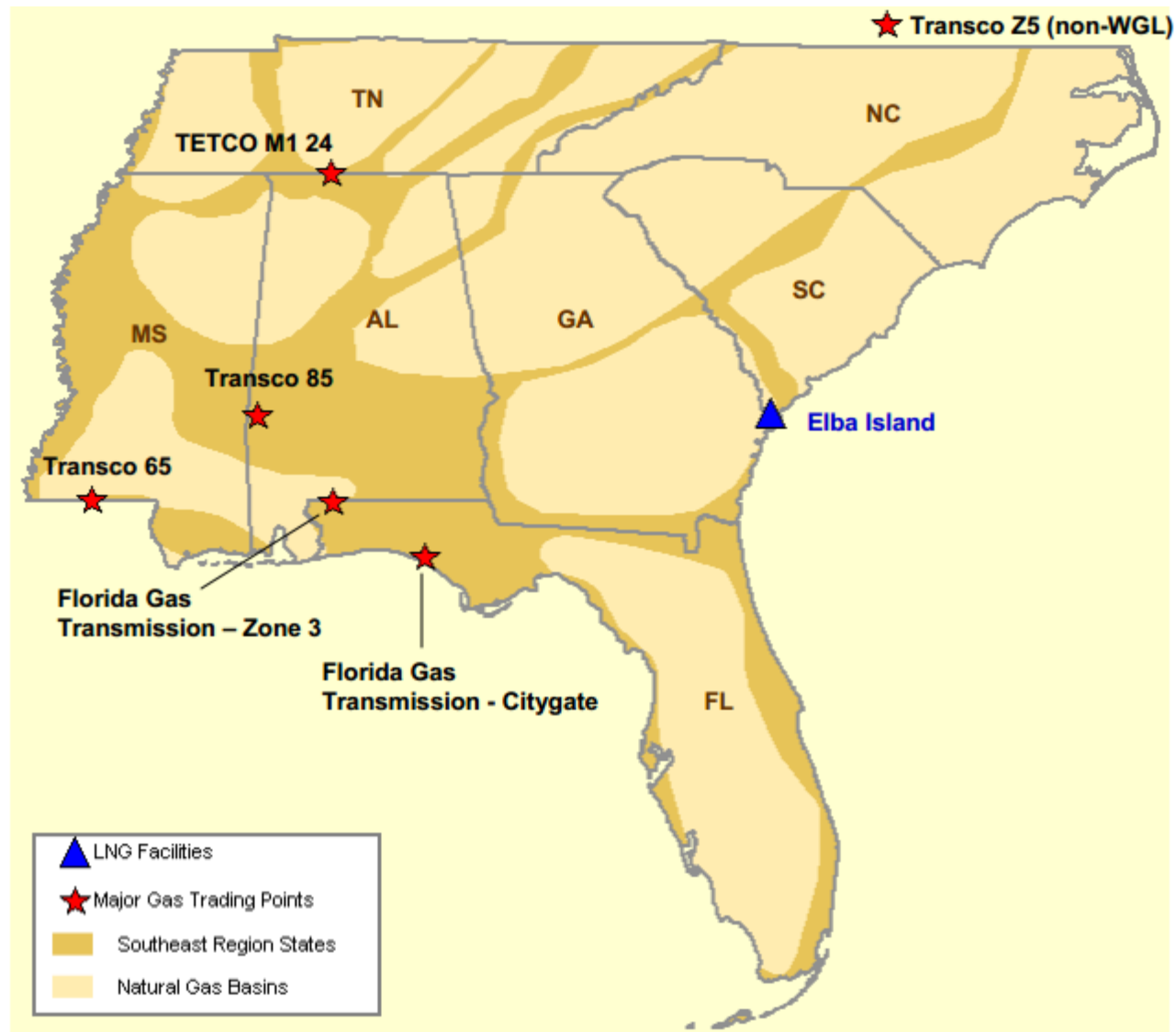


Southeast Natural Gas Region



Southeast Day-Ahead Prices Averaged Annually/Seasonally

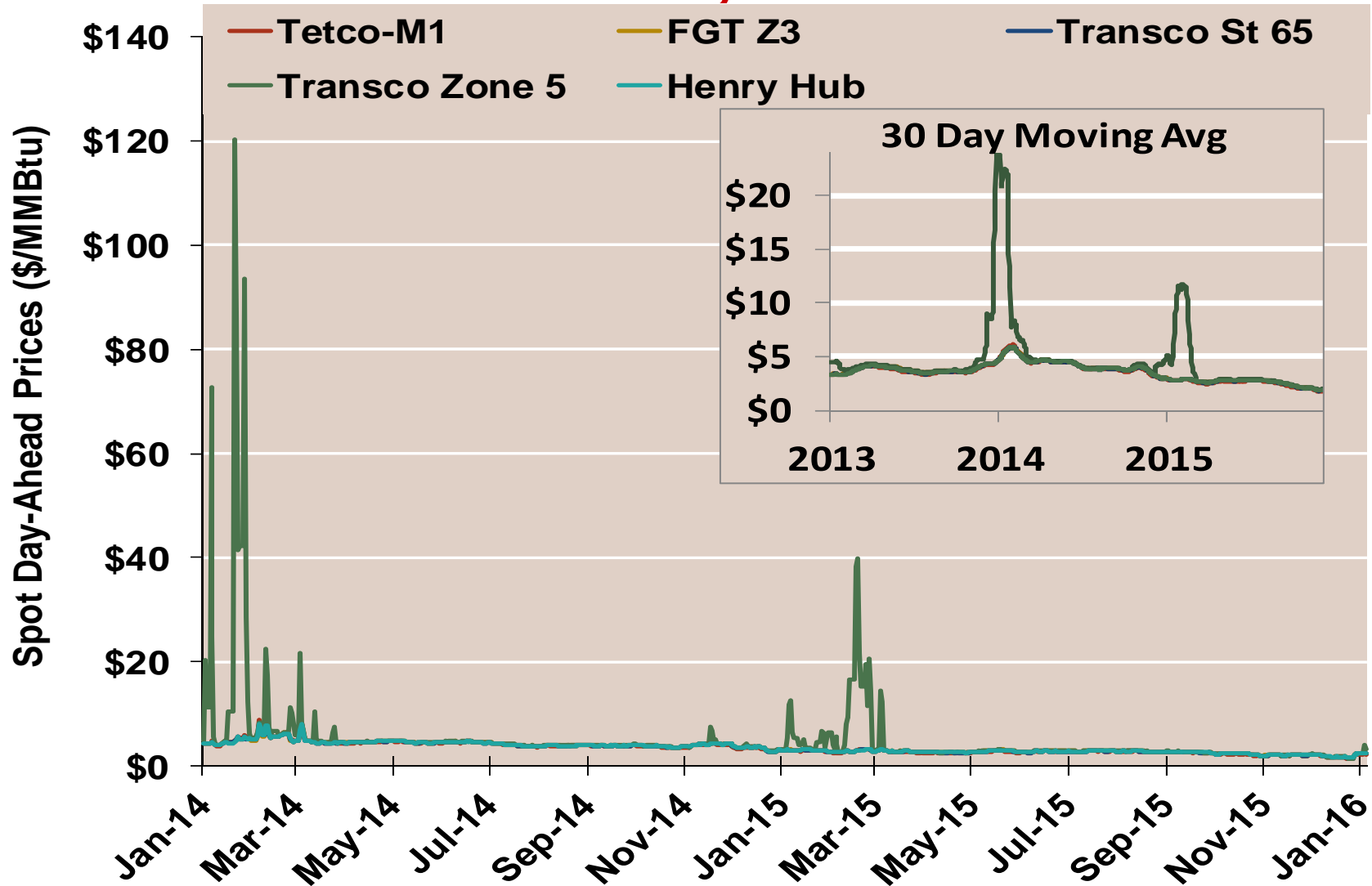
	Average Day Ahead Prices (\$/MMBtu)	FGT Z3	Tetco-M1	Transco St 65	Transco Zone 5	Henry Hub
2013	Annual	3.77	3.66	3.71	4.01	3.72
	Summer	3.83	3.68	3.74	3.88	3.76
	Winter 2013/2014	4.62	4.61	4.60	9.44	4.61
2014	Annual	4.34	4.28	4.30	6.32	4.32
	Summer	4.21	4.12	4.16	4.24	4.18
	Winter 2014/2015	3.21	3.14	3.19	5.57	3.21
2015	Annual	2.62	2.53	2.58	3.58	2.60
	Summer	2.69	2.58	2.65	2.73	2.67
	Winter 2015/2016	2.01	1.94	1.97	2.08	2.00
2016 YTD	Annual	2.34	2.29	2.33	2.95	2.33
	Summer					
	Winter 2016/2017					

Notes:

Source: Derived from Bloomberg ICE data

Updated Jan-2016

Southeast Day-Ahead Prices

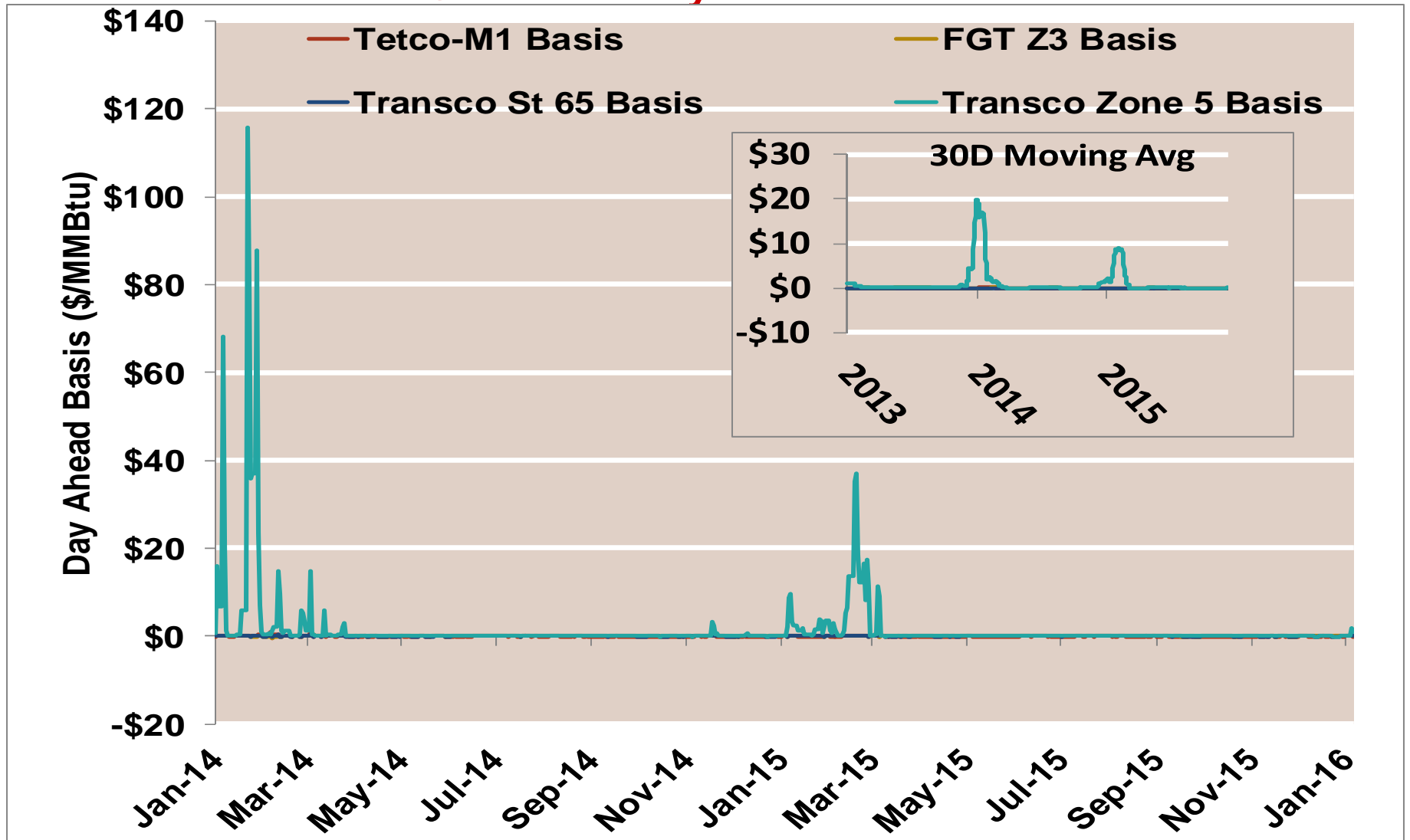


Notes:

Source: Derived from Bloomberg ICE data

Updated Jan-2016

Southeast Day-Ahead Basis

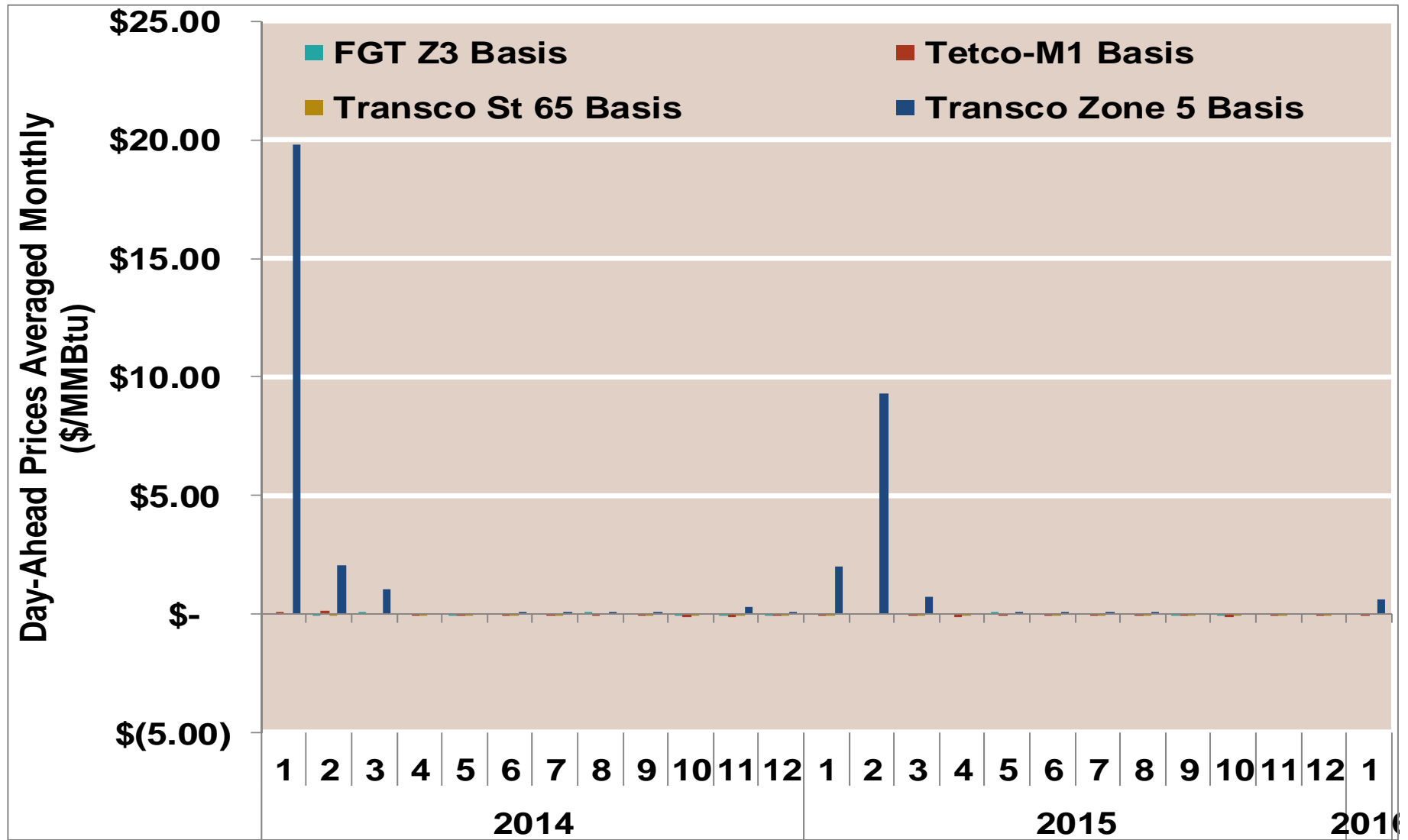


Notes:

Source: Derived from Bloomberg ICE data

Updated Jan-2016

Southeast Basis to Henry Hub Averaged Monthly

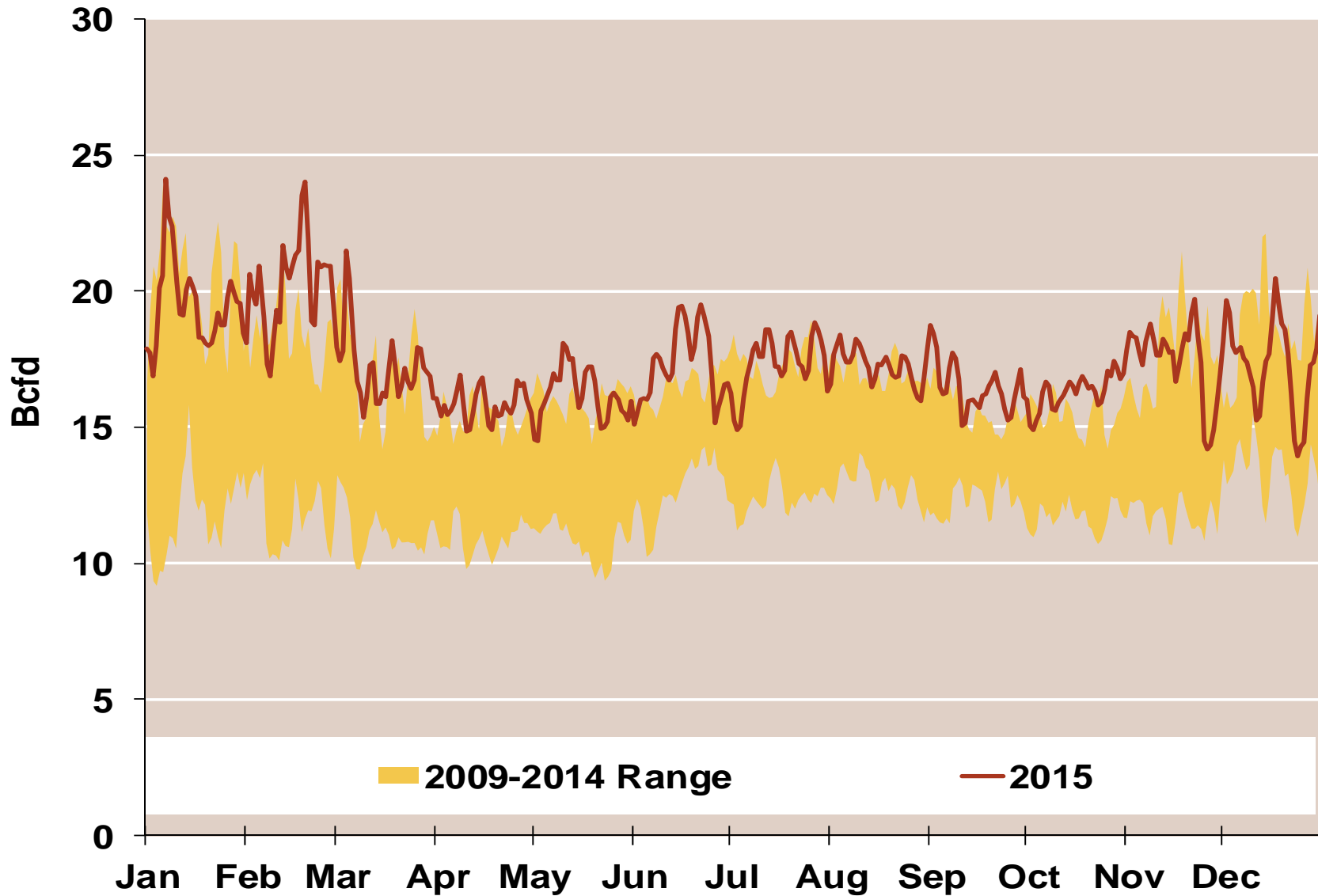


Notes:

Source: Derived from ICE data

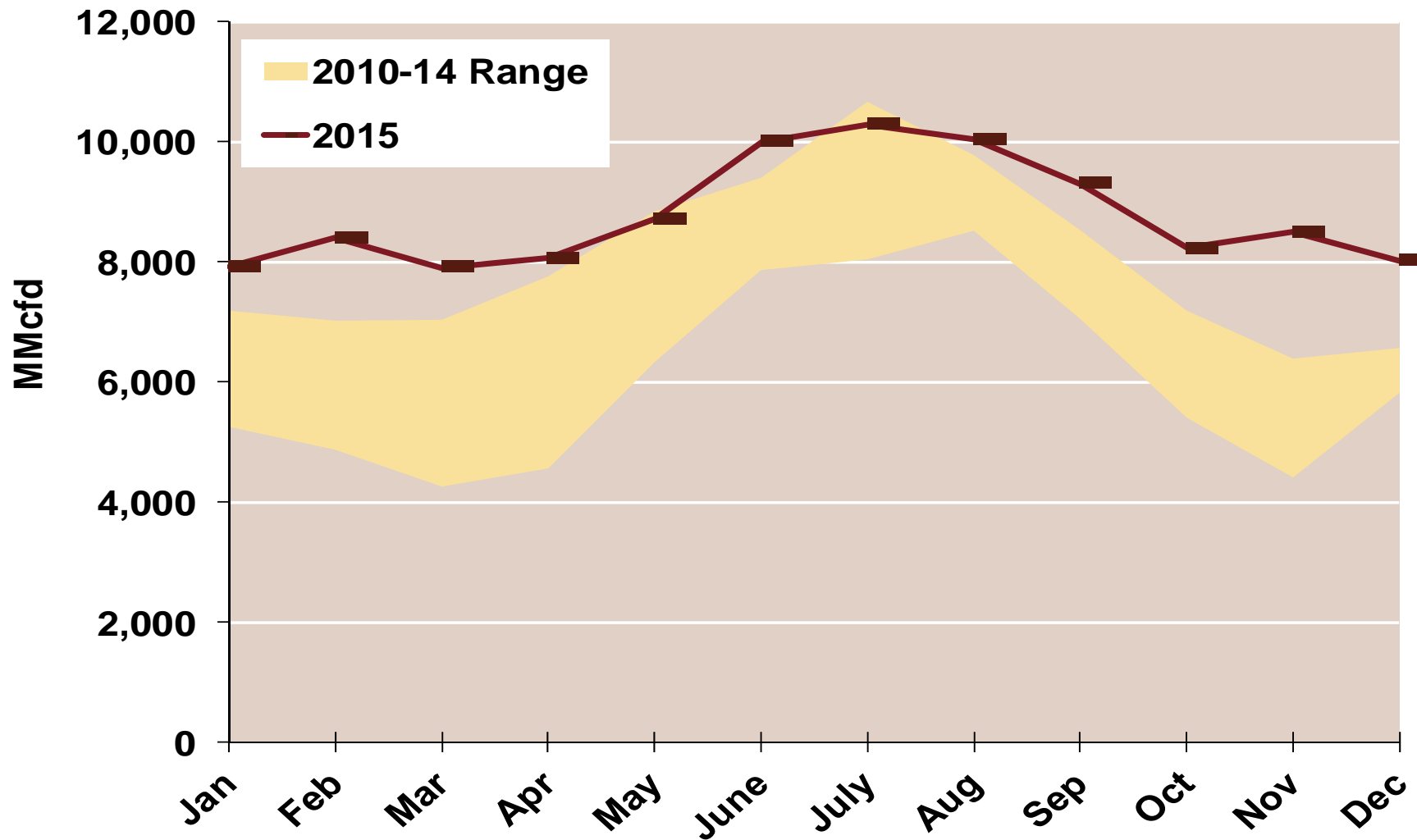
Updated Jan-2016

Daily Southeast Natural Gas Demand All Sectors

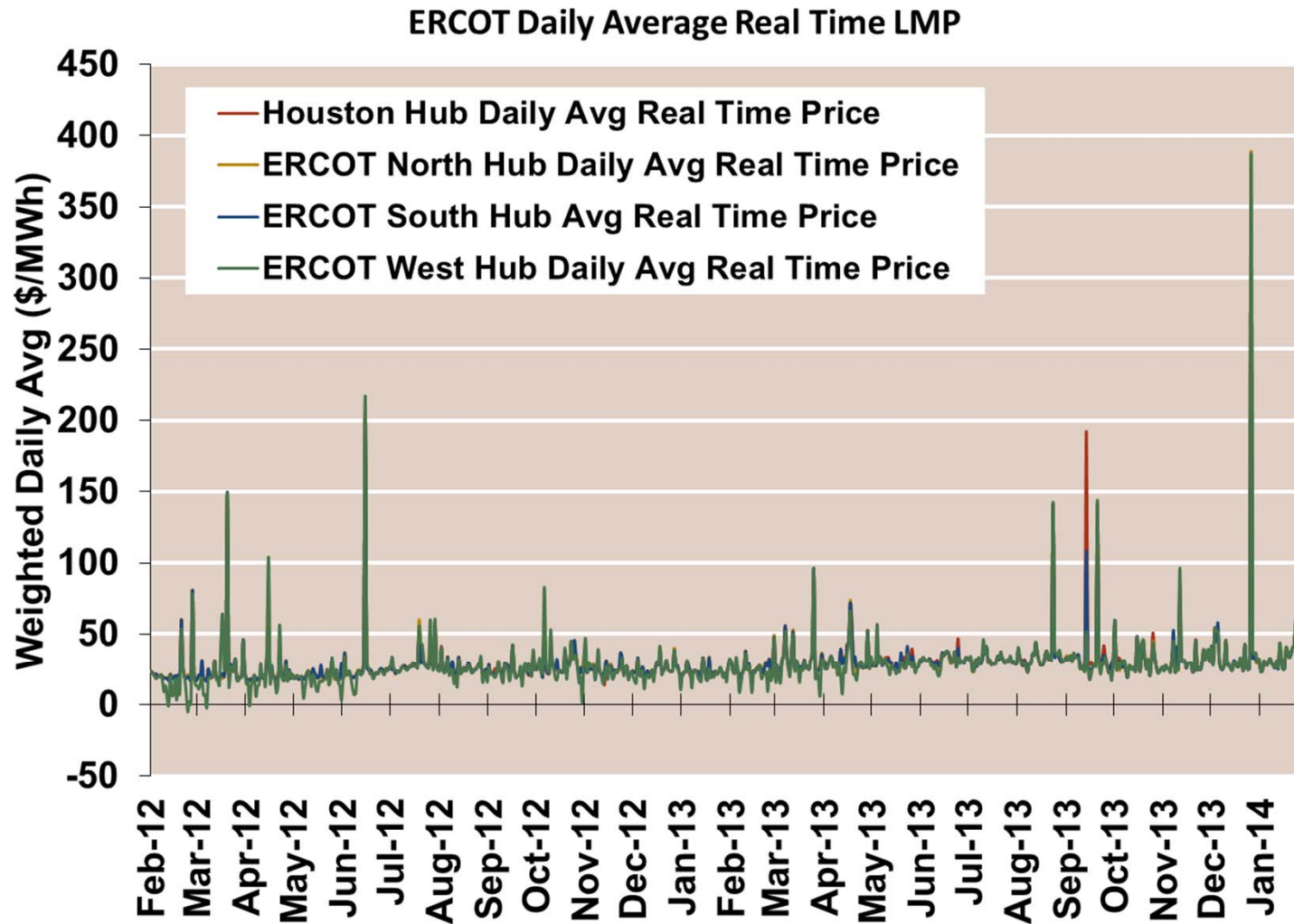


Source: Derived from *Bentek Energy* data

Southeast Natural Gas Consumption for Power Generation

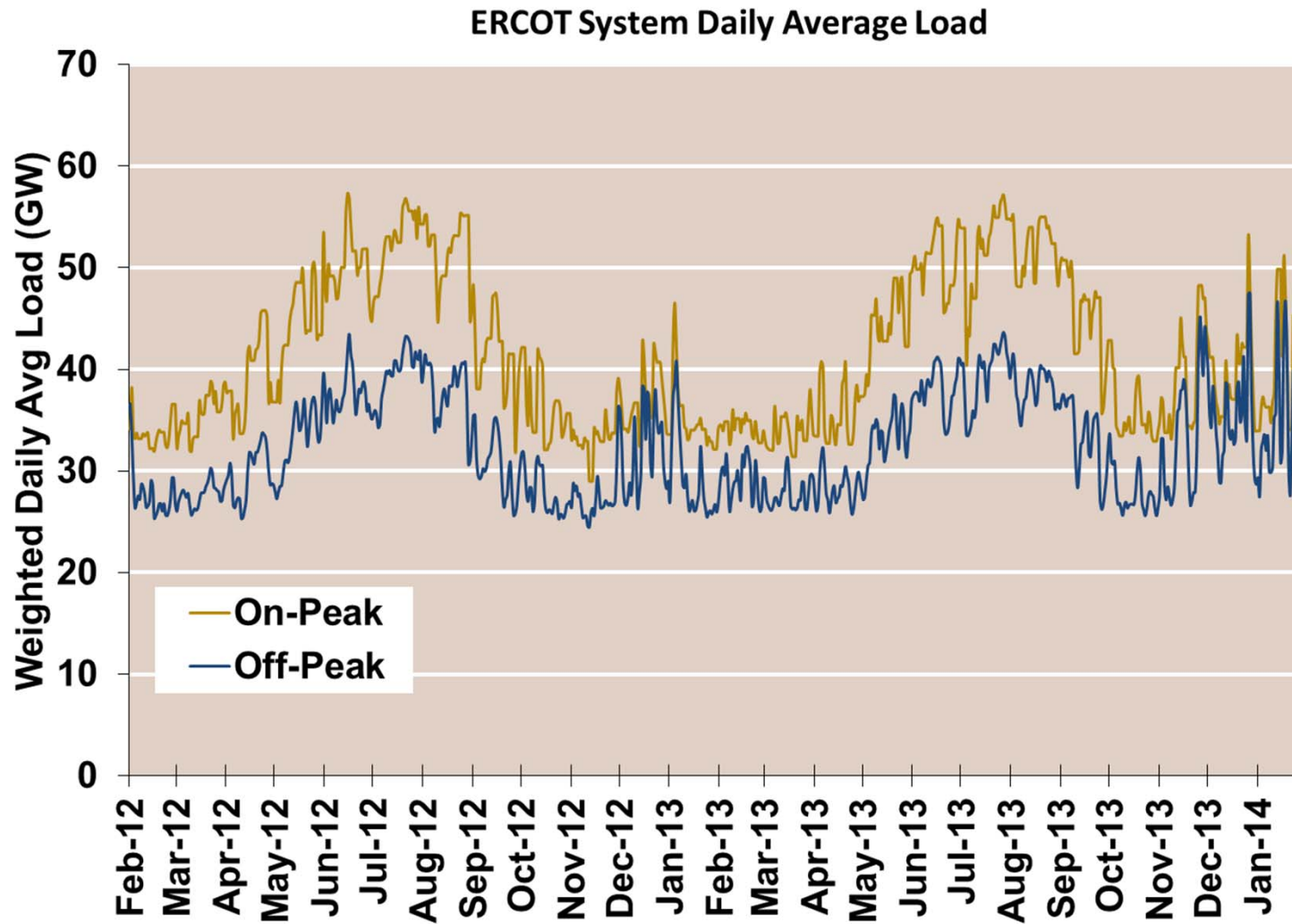


ERCOT Real Time Prices—Two Year History



Source: Genscape via Bloomberg

ERCOT System Daily Average Load —Two Year History



Source: Genscape via Bloomberg