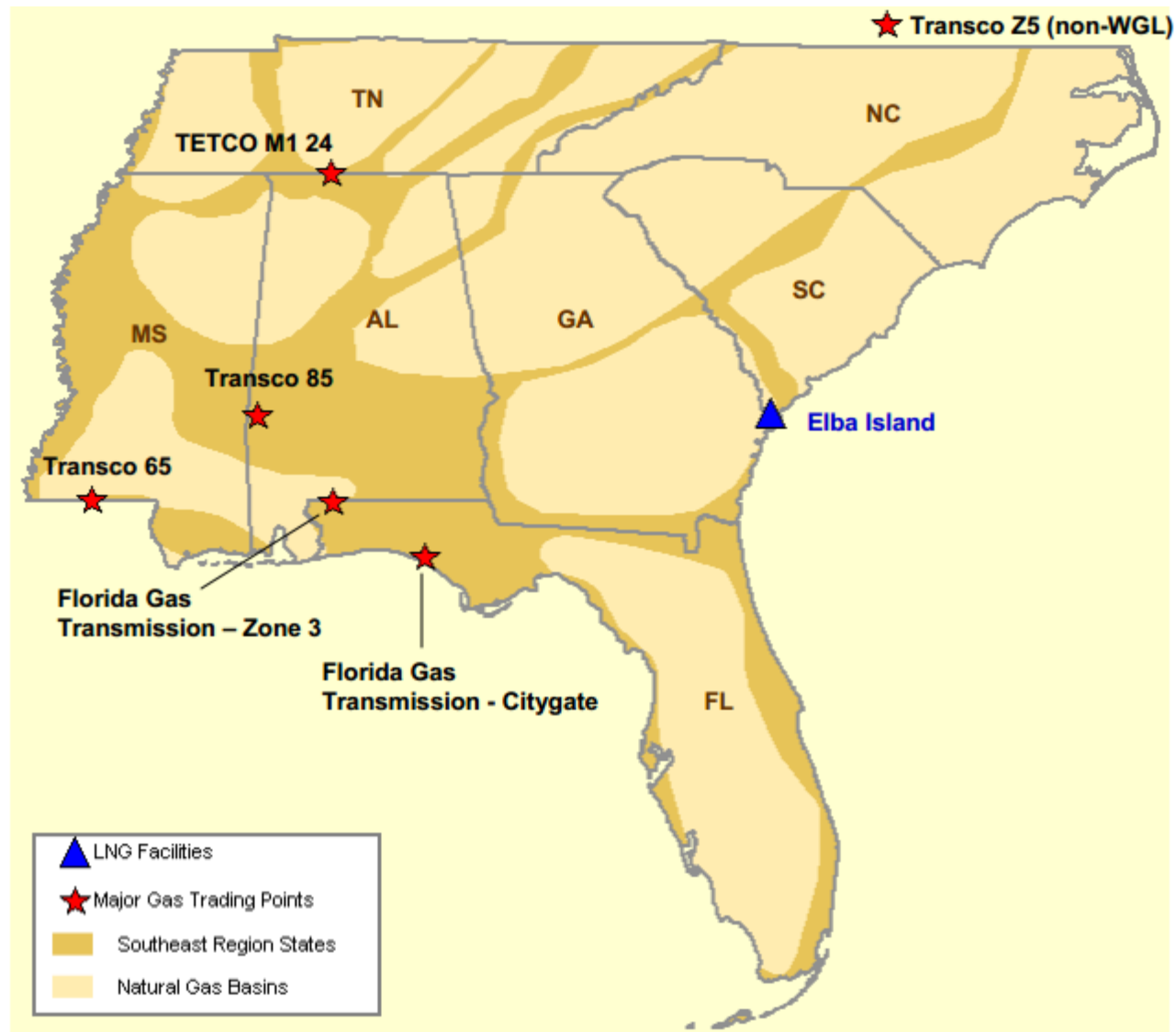


## Southeast Natural Gas Region



## Southeast Day-Ahead Prices Averaged Annually/Seasonally

	Average Day Ahead Prices (\$/MMBtu)	FGT Z3	Tetco-M1	Transco St 65	Transco Zone 5	Henry Hub
2012	Annual	2.94	2.73	2.75	2.94	2.75
	Summer	2.97	2.65	2.67	2.81	2.69
	Winter 2012/2013	3.51	3.47	3.48	3.95	3.47
2013	Annual	3.77	3.66	3.71	4.01	3.72
	Summer	3.83	3.68	3.74	3.88	3.76
	Winter 2013/2014	4.62	4.61	4.60	9.44	4.61
2014	Annual	4.34	4.28	4.30	6.32	4.32
	Summer	4.21	4.12	4.16	4.24	4.18
	Winter 2014/2015	3.21	3.14	3.19	5.57	3.21
2015 YTD	Annual	2.73	2.63	2.69	3.85	2.71
	Summer	2.69	2.58	2.65	2.73	2.67
	Winter 2015/2016	2.12	1.99	2.03	2.10	2.06

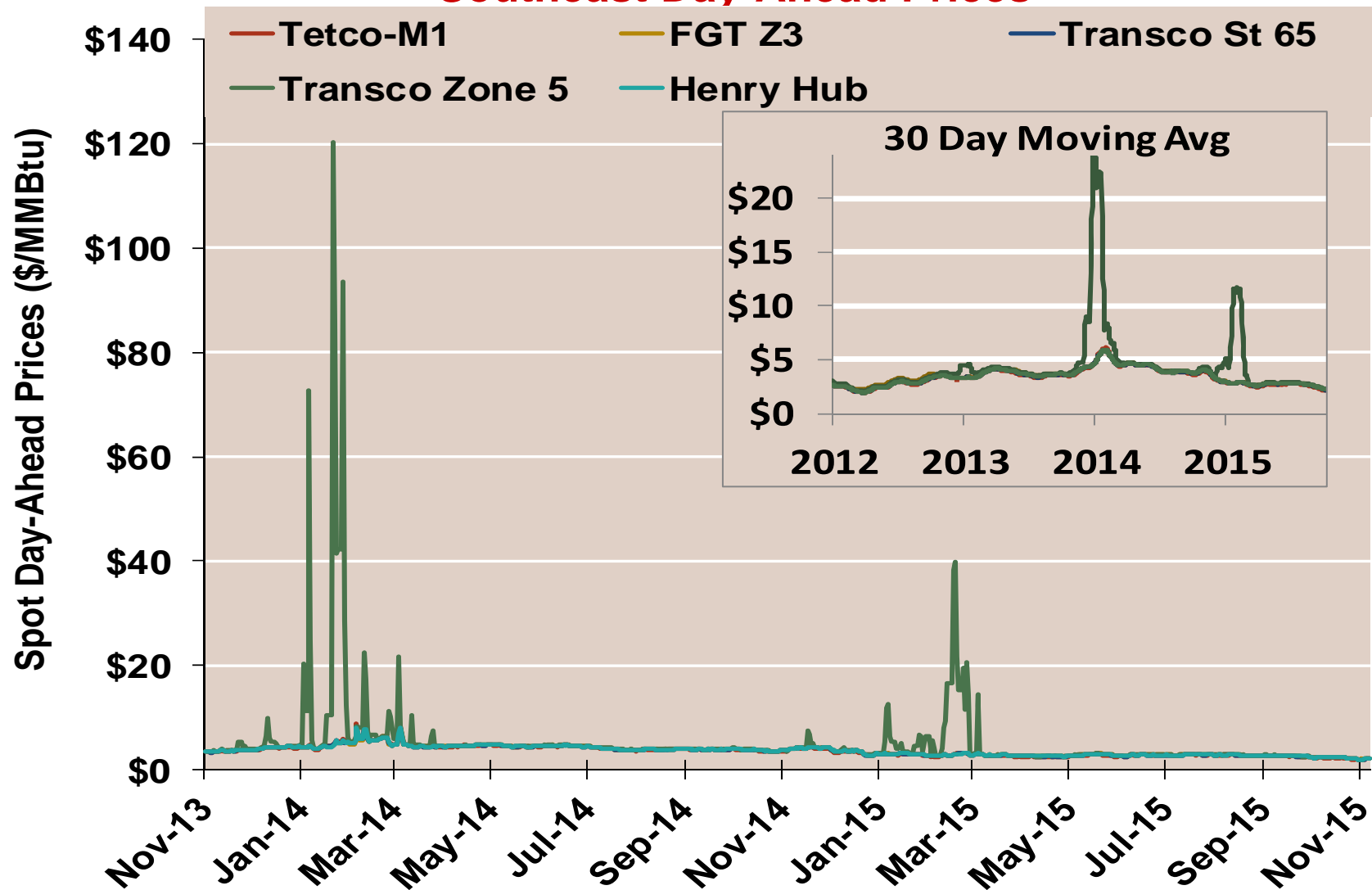
Notes:

Source: Derived from Bloomberg ICE data

Updated Nov-2015

2040

### Southeast Day-Ahead Prices

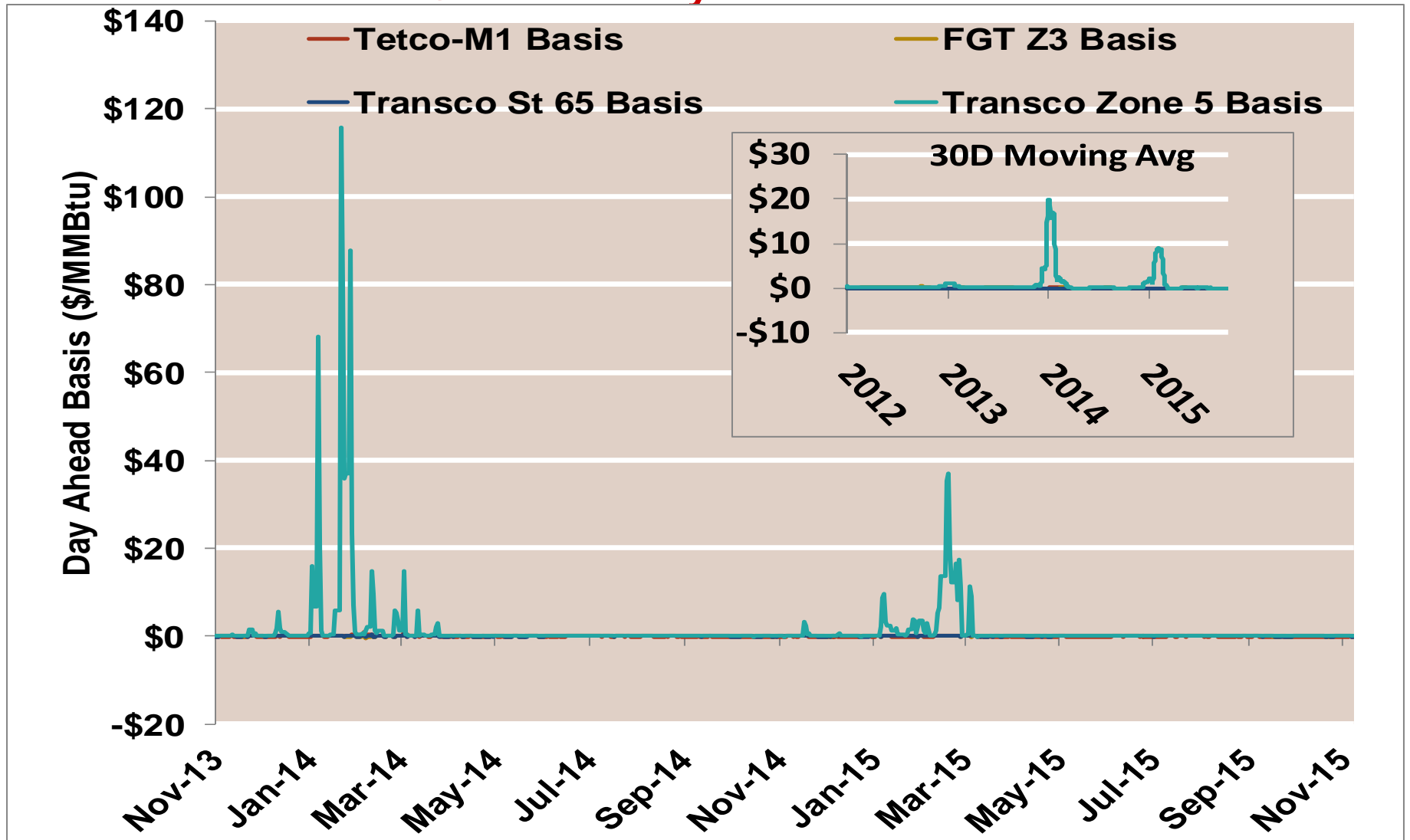


Notes:

Source: Derived from Bloomberg ICE data

Updated Nov-2015

### Southeast Day-Ahead Basis

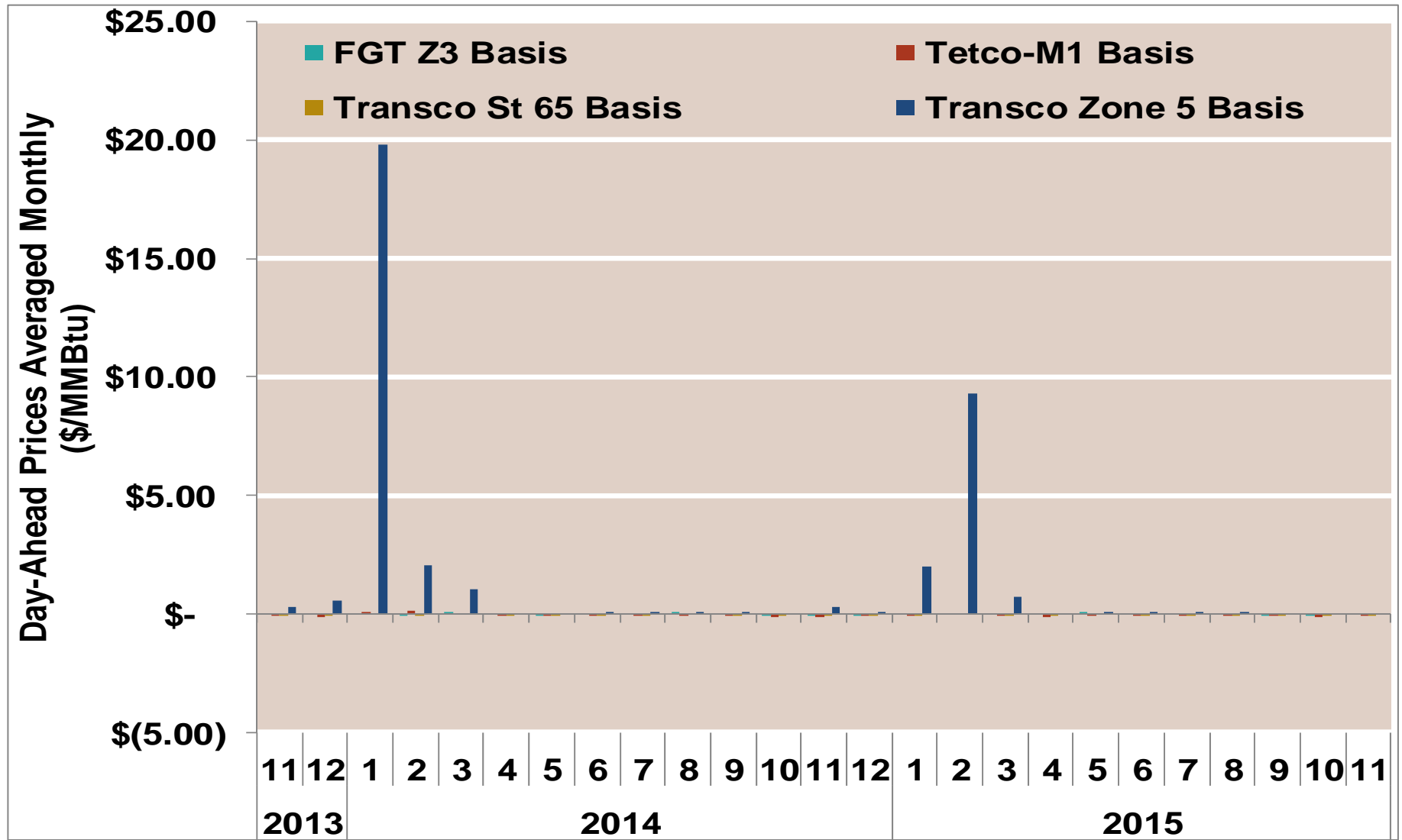


Notes:

Source: Derived from Bloomberg ICE data

Updated Nov-2015

## Southeast Basis to Henry Hub Averaged Monthly

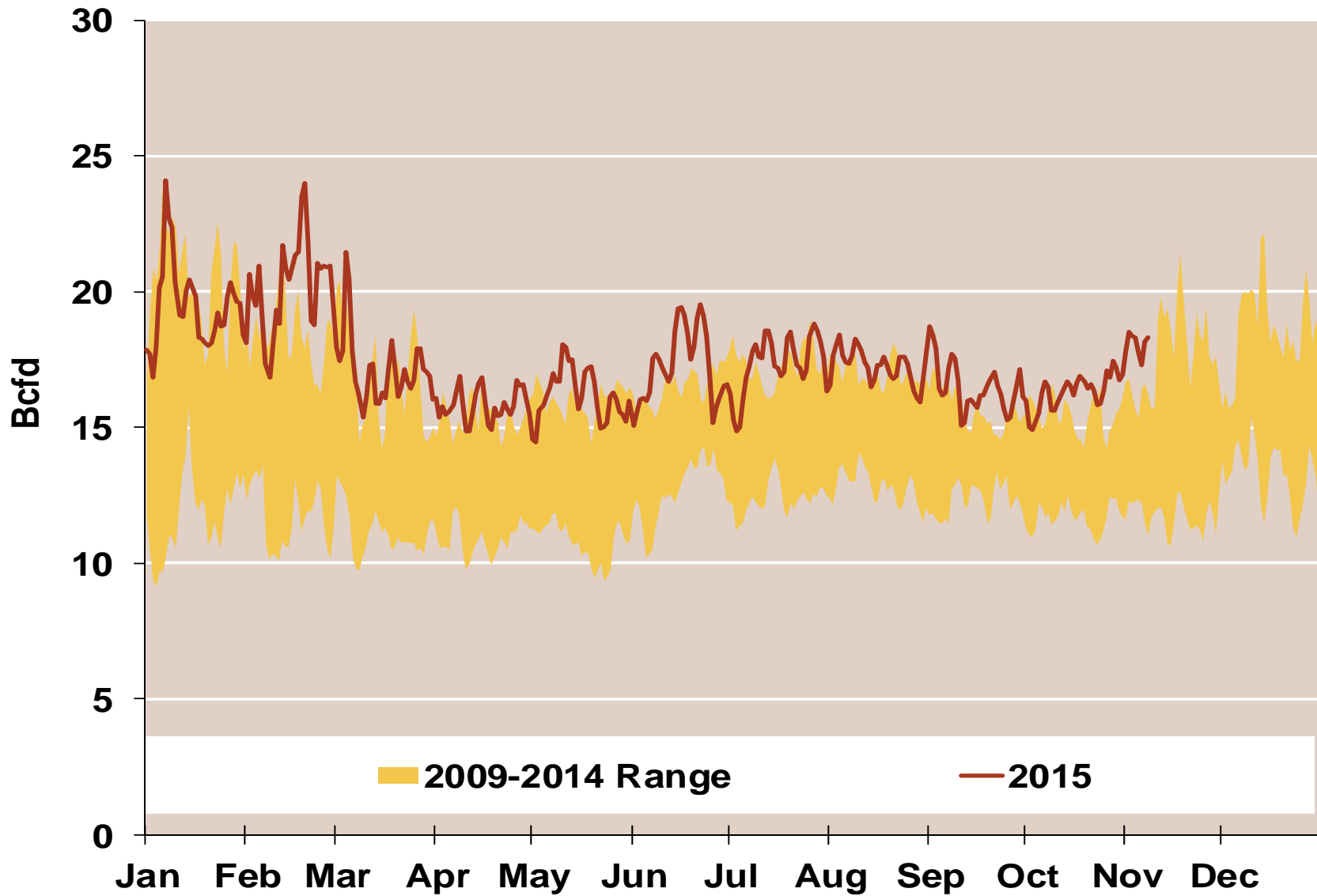


Notes:

Source: Derived from ICE data

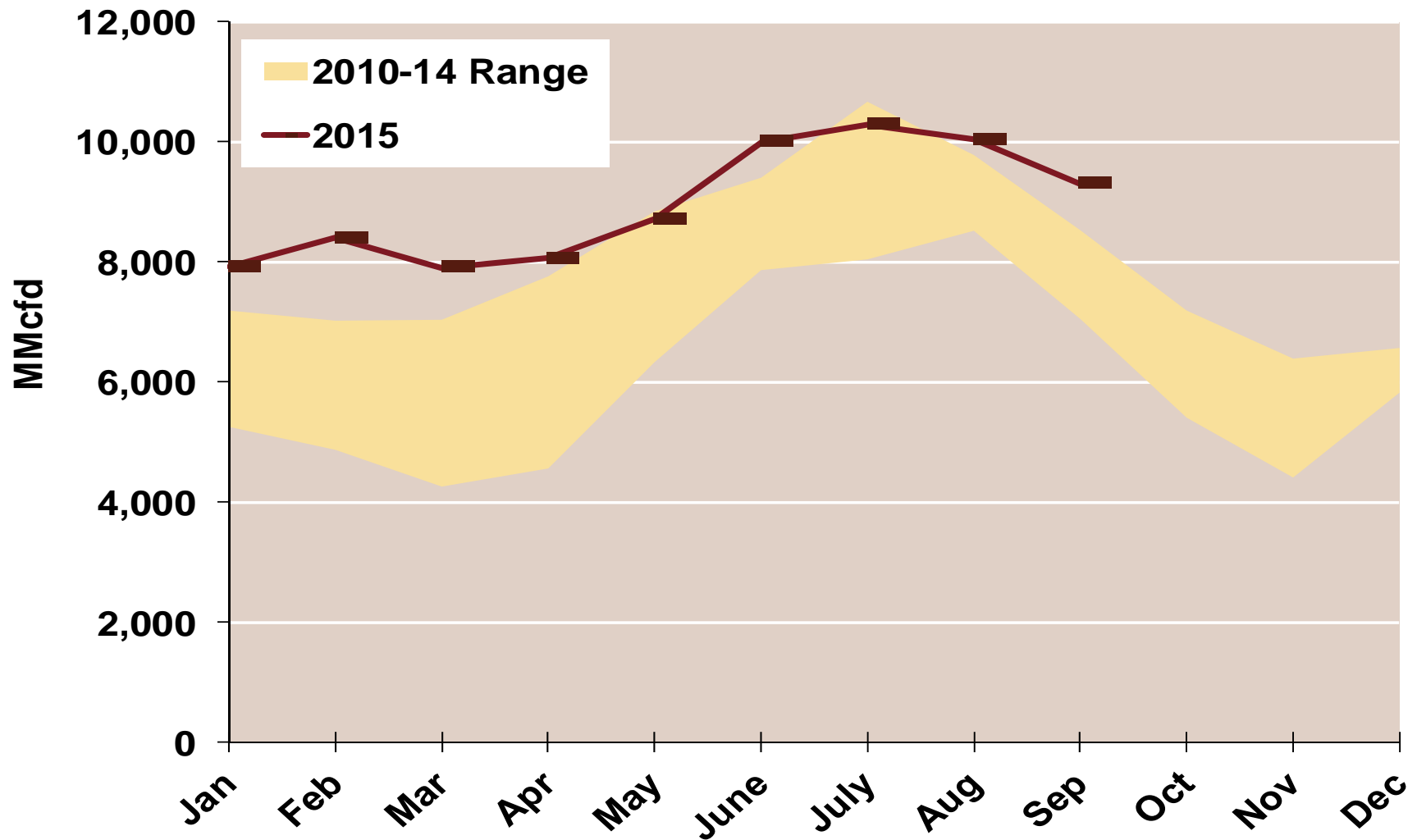
Updated Nov-2015

## Daily Southeast Natural Gas Demand All Sectors

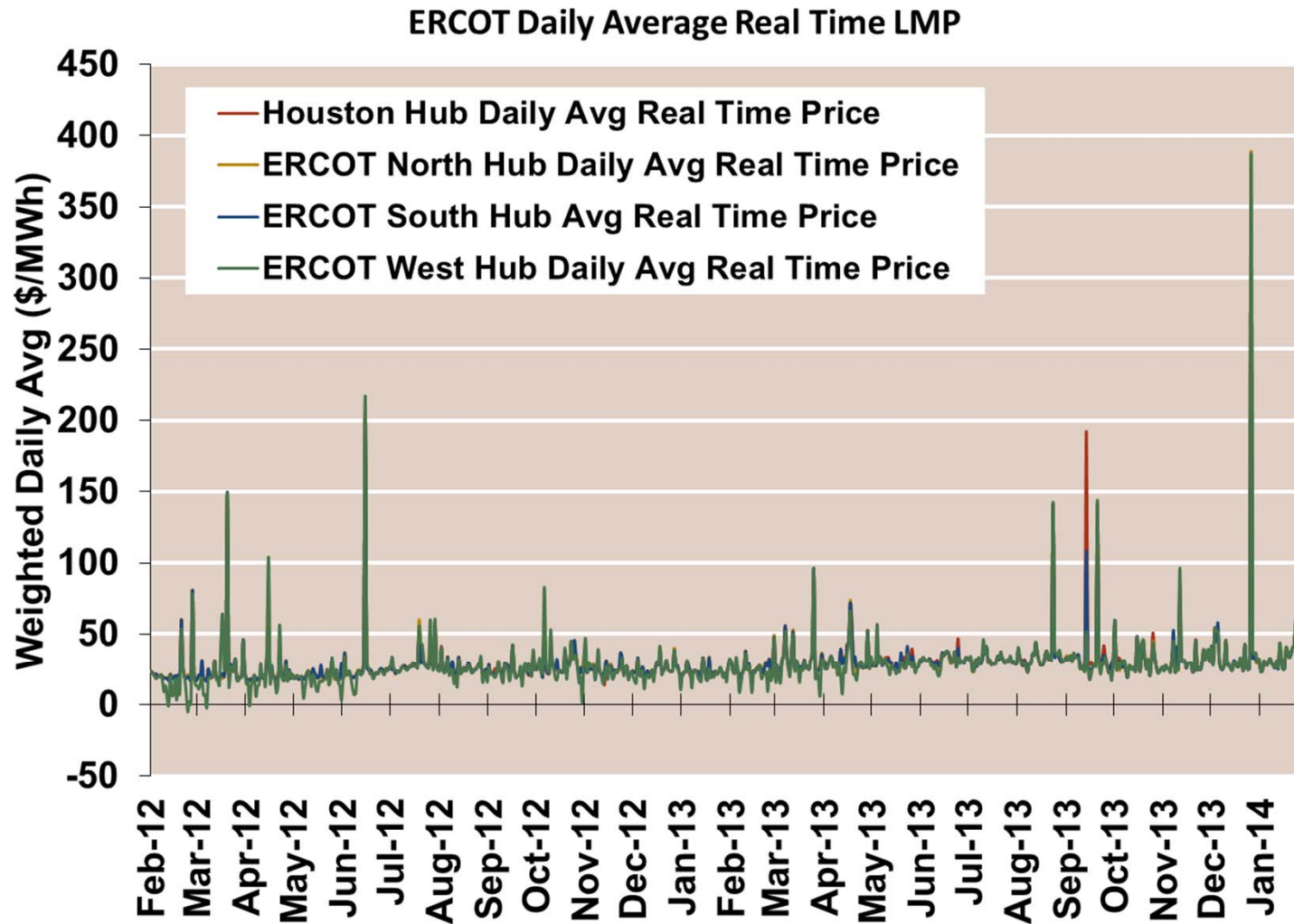


Source: Derived from *Bentek Energy* data

## Southeast Natural Gas Consumption for Power Generation



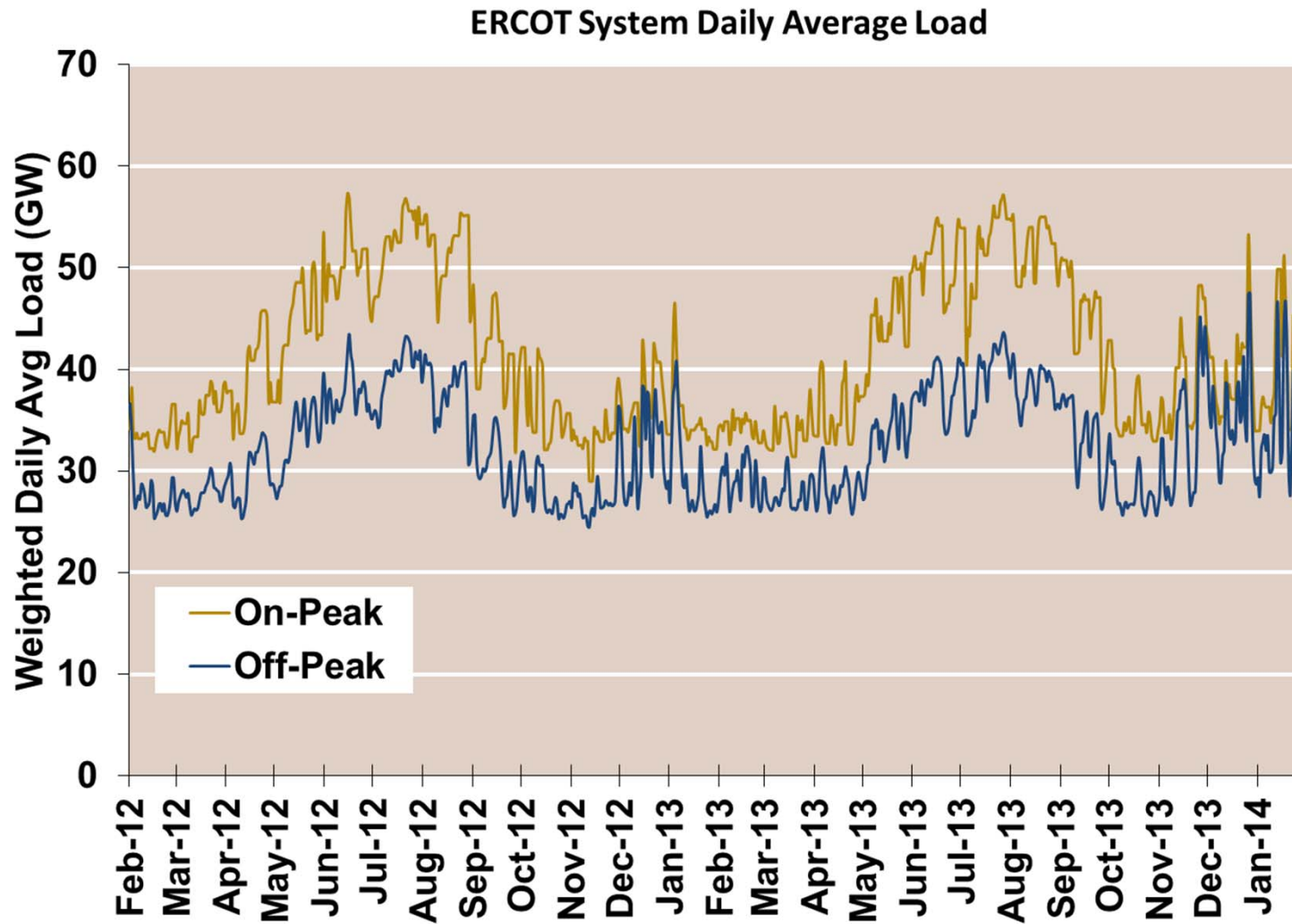
## ERCOT Real Time Prices—Two Year History



Source: Genscape via Bloomberg



## ERCOT System Daily Average Load —Two Year History



Source: Genscape via Bloomberg