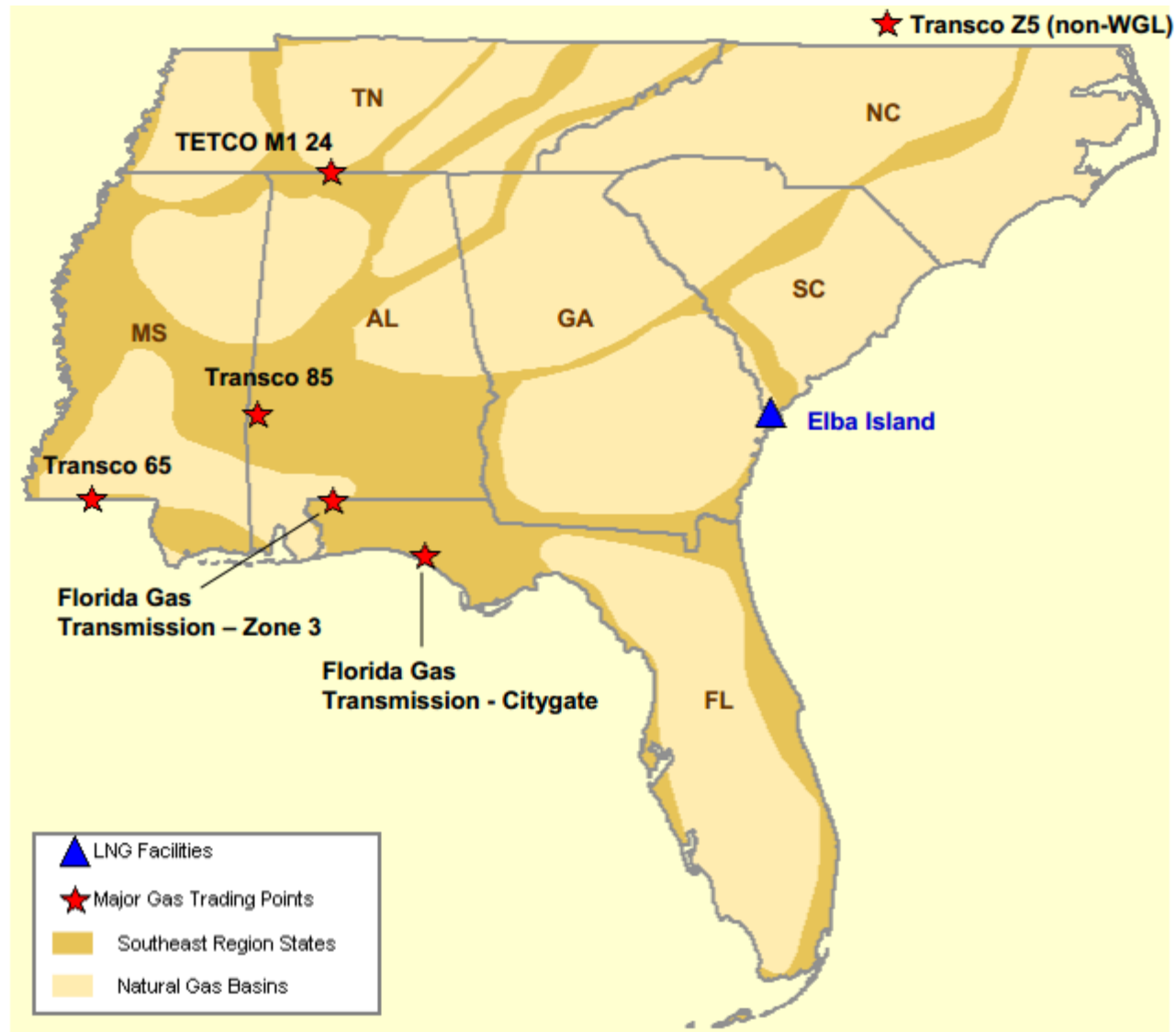


Southeast Natural Gas Region



Southeast Day-Ahead Prices Averaged Annually/Seasonally

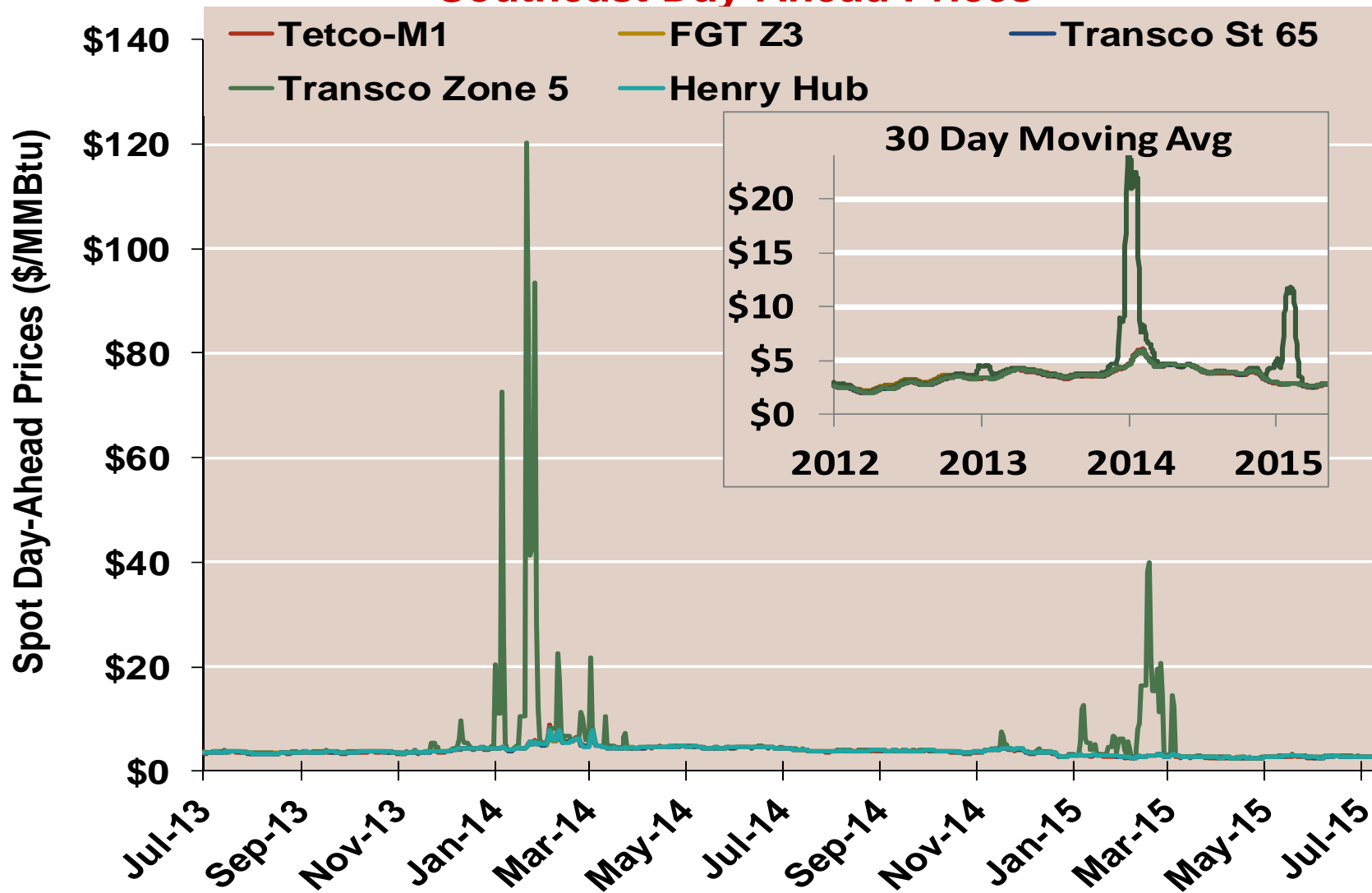
| | Average Day Ahead Prices (\$/MMBtu) | FGT Z3 | Tetco-M1 | Transco St 65 | Transco Zone 5 | Henry Hub |
|----------|-------------------------------------|--------|----------|---------------|----------------|-----------|
| 2012 | Annual | 2.94 | 2.73 | 2.75 | 2.94 | 2.75 |
| | Summer | 2.97 | 2.65 | 2.67 | 2.81 | 2.69 |
| | Winter 2012/2013 | 3.51 | 3.47 | 3.48 | 3.95 | 3.47 |
| 2013 | Annual | 3.77 | 3.66 | 3.71 | 4.01 | 3.72 |
| | Summer | 3.83 | 3.68 | 3.74 | 3.88 | 3.76 |
| | Winter 2013/2014 | 4.62 | 4.61 | 4.60 | 9.44 | 4.61 |
| 2014 | Annual | 4.34 | 4.28 | 4.30 | 6.32 | 4.32 |
| | Summer | 4.21 | 4.12 | 4.16 | 4.24 | 4.18 |
| | Winter 2014/2015 | 3.21 | 3.14 | 3.19 | 5.57 | 3.21 |
| 2015 YTD | Annual | 2.81 | 2.72 | 2.78 | 4.96 | 2.79 |
| | Summer | 2.73 | 2.60 | 2.67 | 2.74 | 2.69 |
| | Winter 2015/2016 | | | | | |

Notes:

Source: Derived from Bloomberg ICE data

Updated 7/13/2015

Southeast Day-Ahead Prices

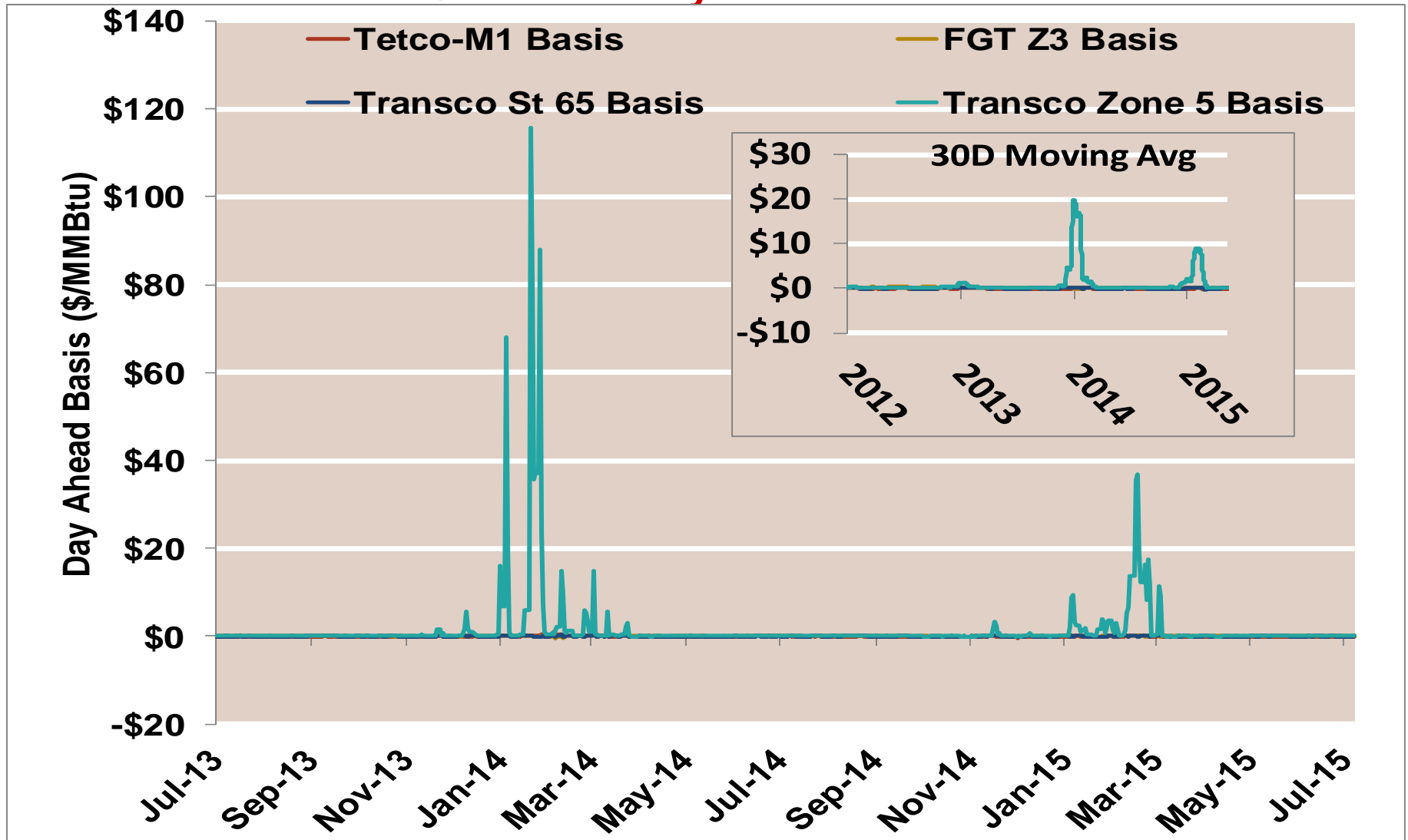


Notes:

Source: Derived from Bloomberg ICE data

Updated 7/13/2015

Southeast Day-Ahead Basis

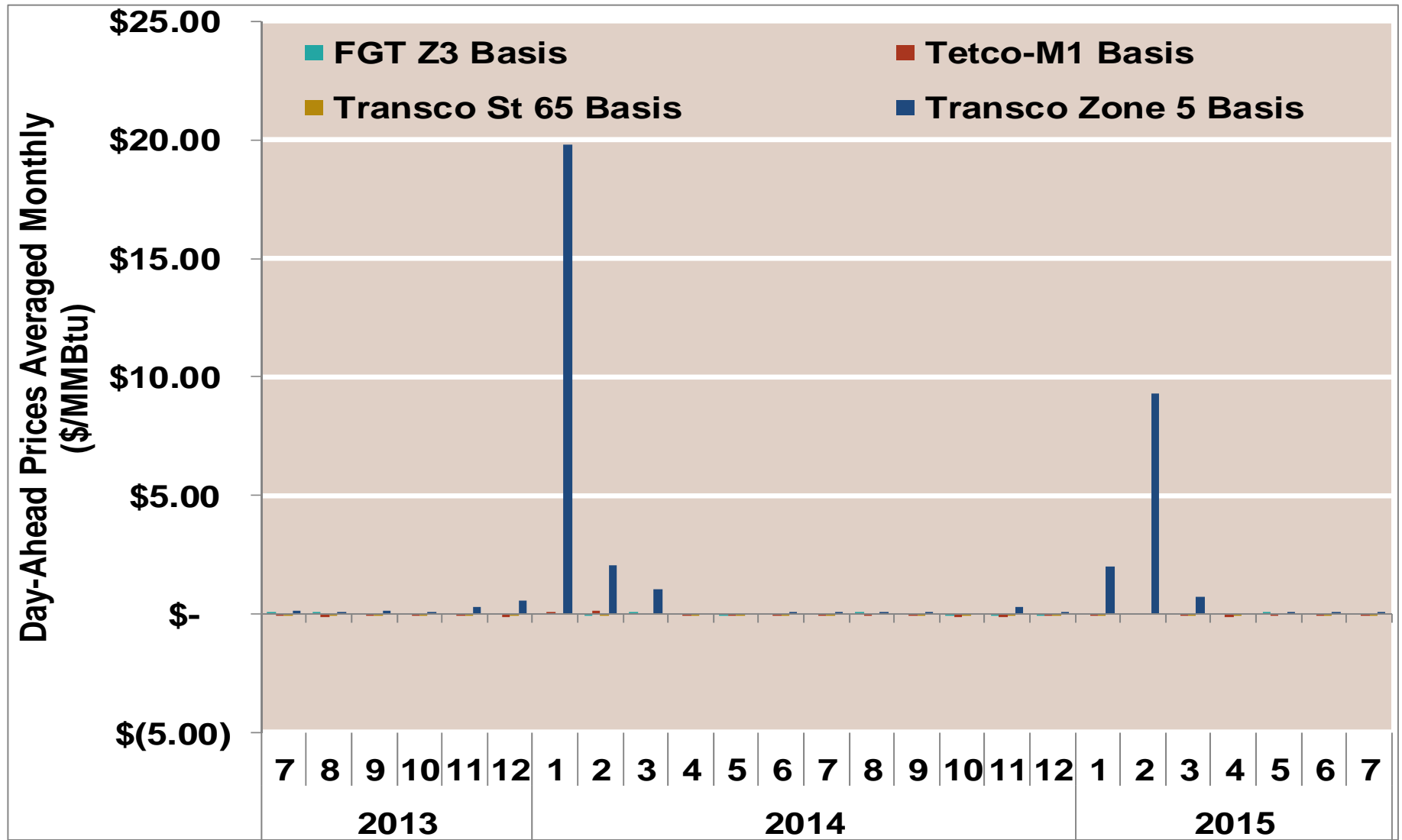


Notes:

Source: Derived from Bloomberg ICE data

Updated 7/13/2015

Southeast Basis to Henry Hub Averaged Monthly

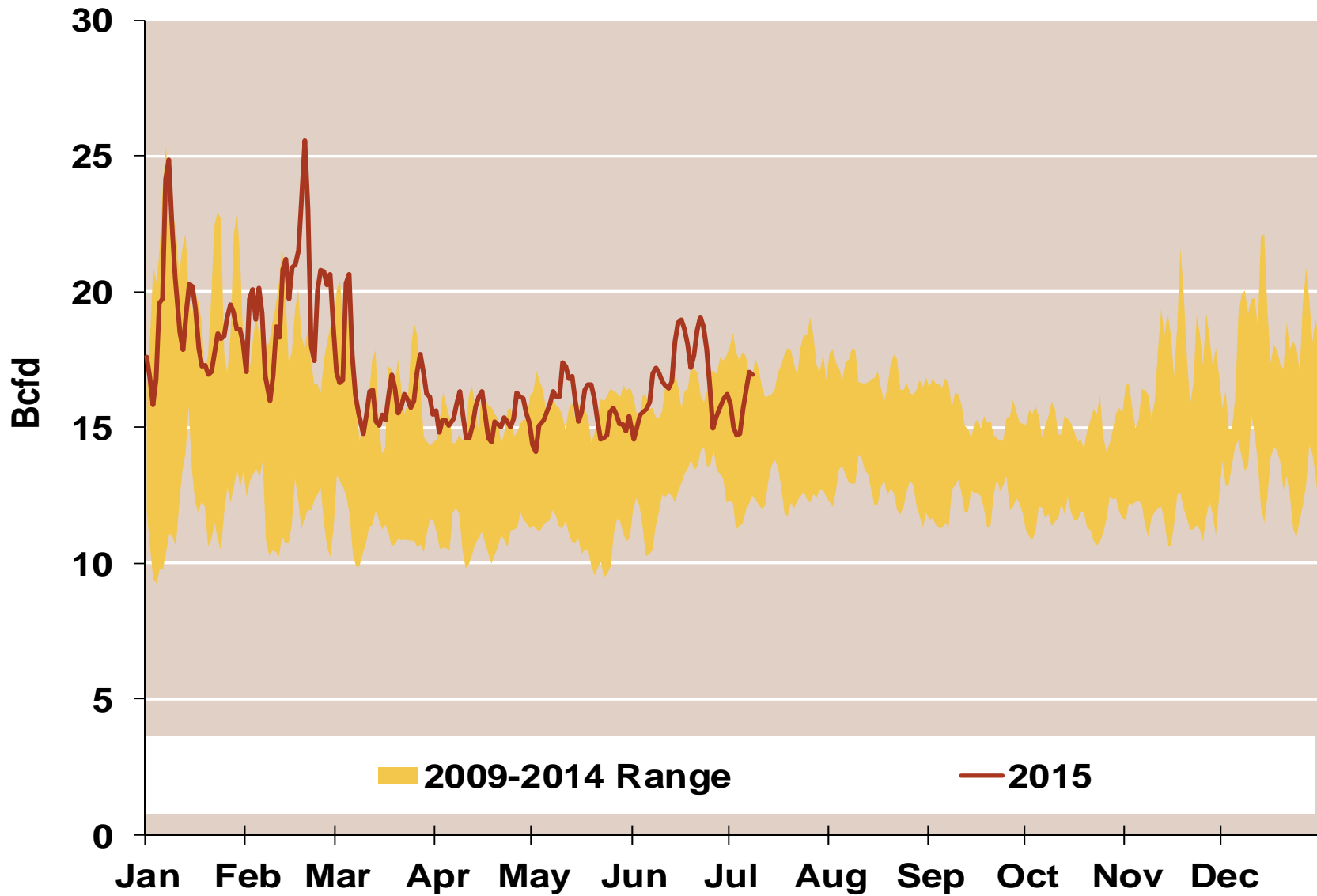


Notes:

Source: Derived from ICE data

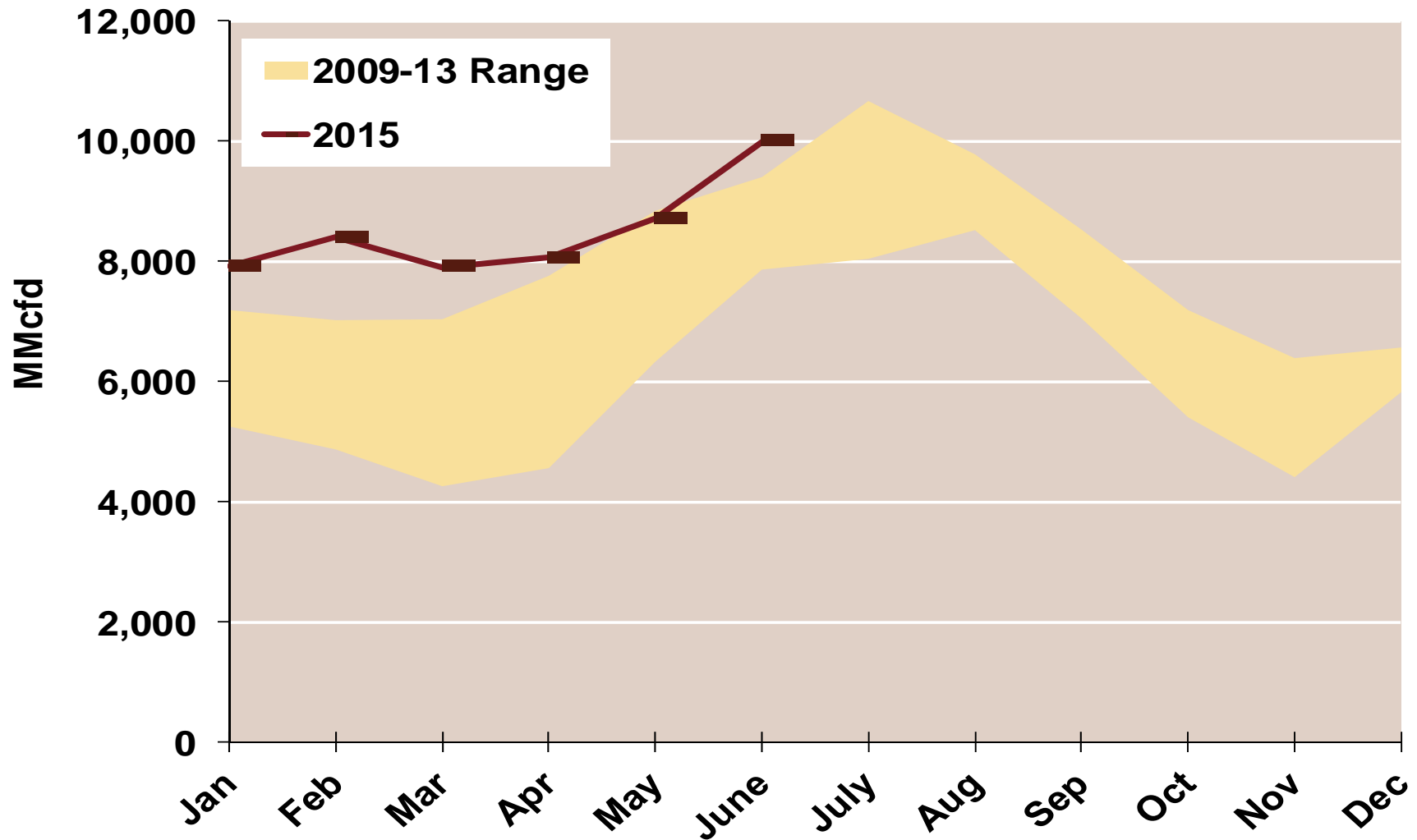
Updated 7/13/2015

Daily Southeast Natural Gas Demand All Sectors



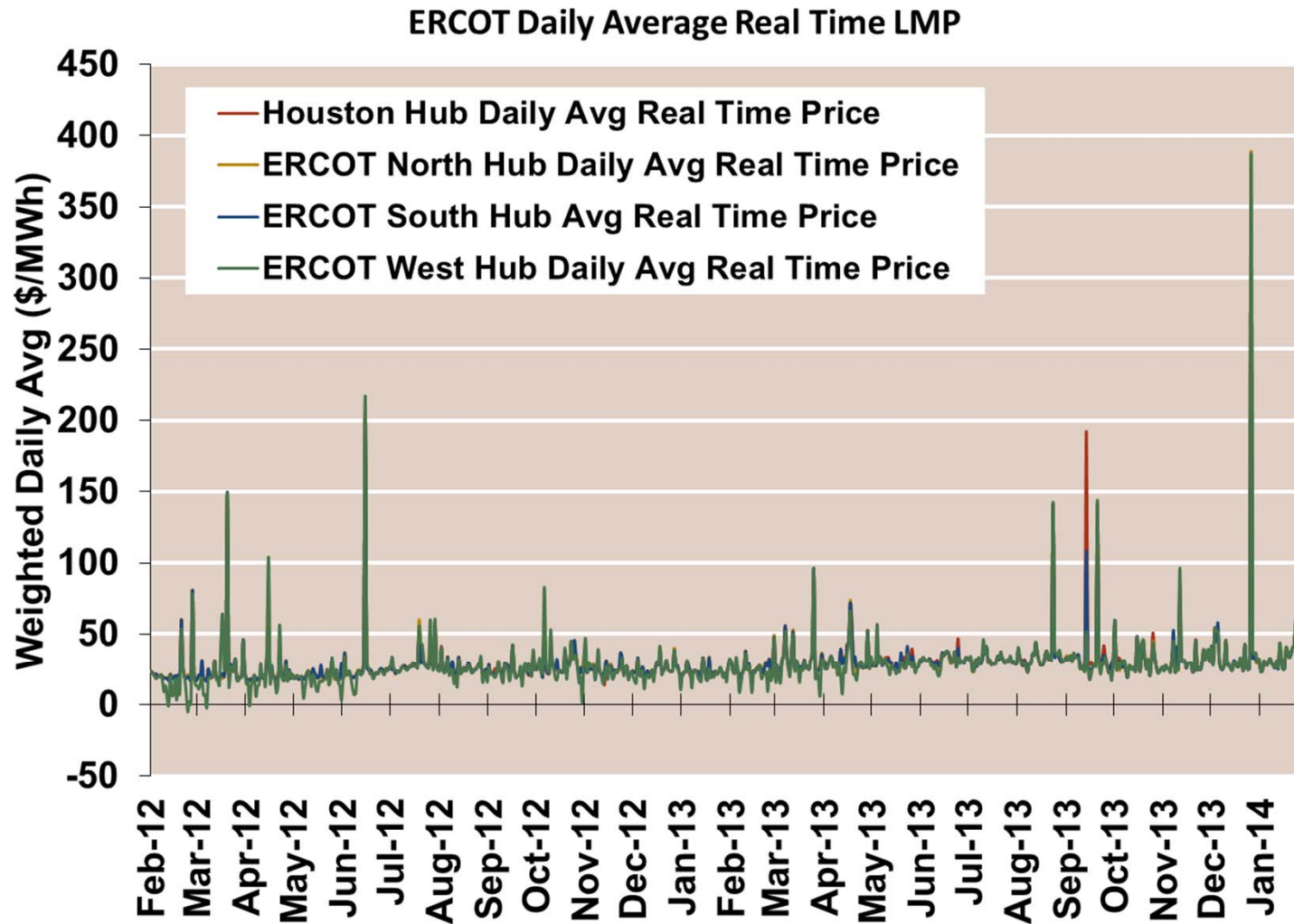
Source: Derived from *Bentek Energy* data

Southeast Natural Gas Consumption for Power Generation



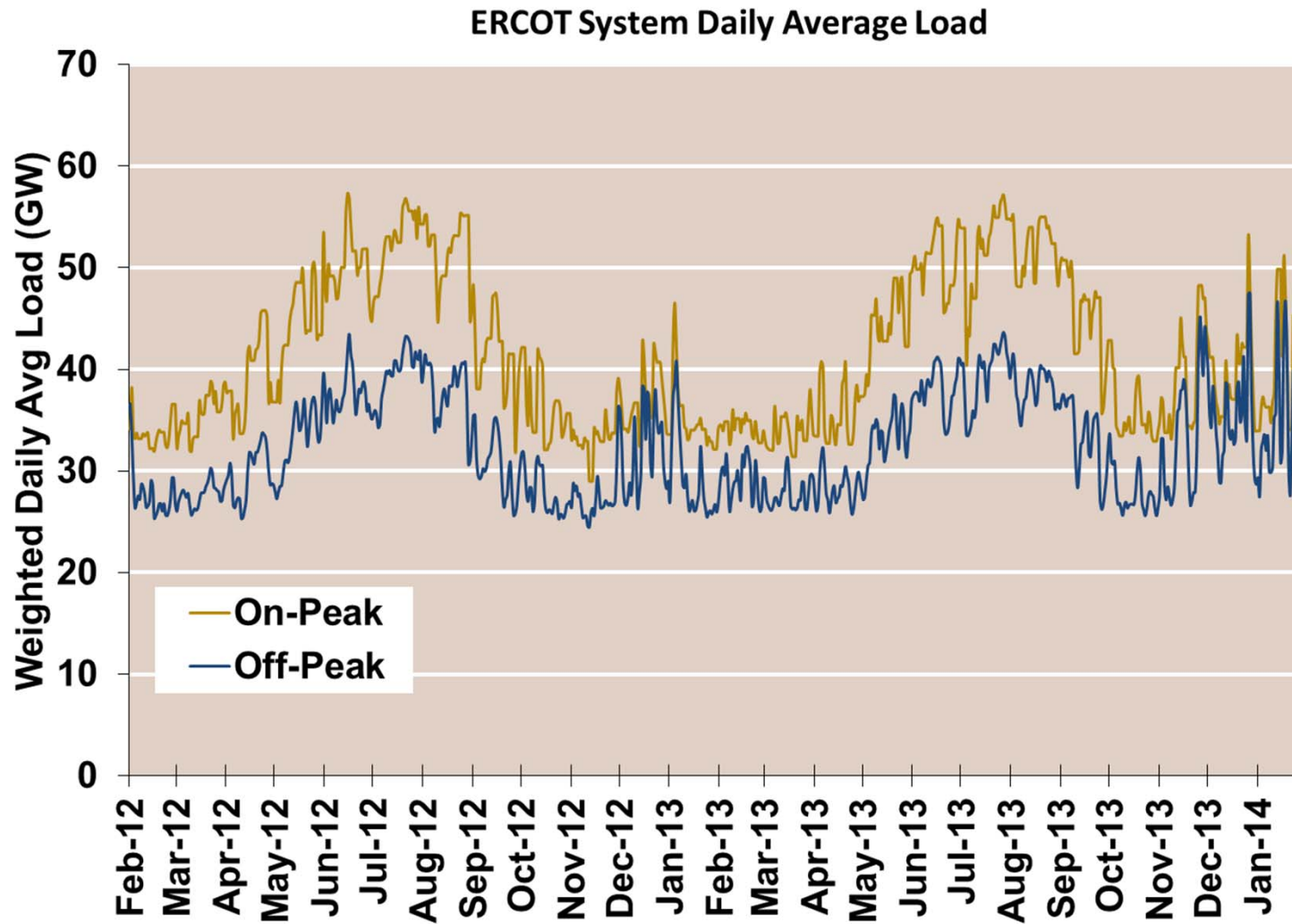
Source: Derived from *Bentek Energy* data

ERCOT Real Time Prices—Two Year History



Source: Genscape via Bloomberg

ERCOT System Daily Average Load —Two Year History



Source: Genscape via Bloomberg