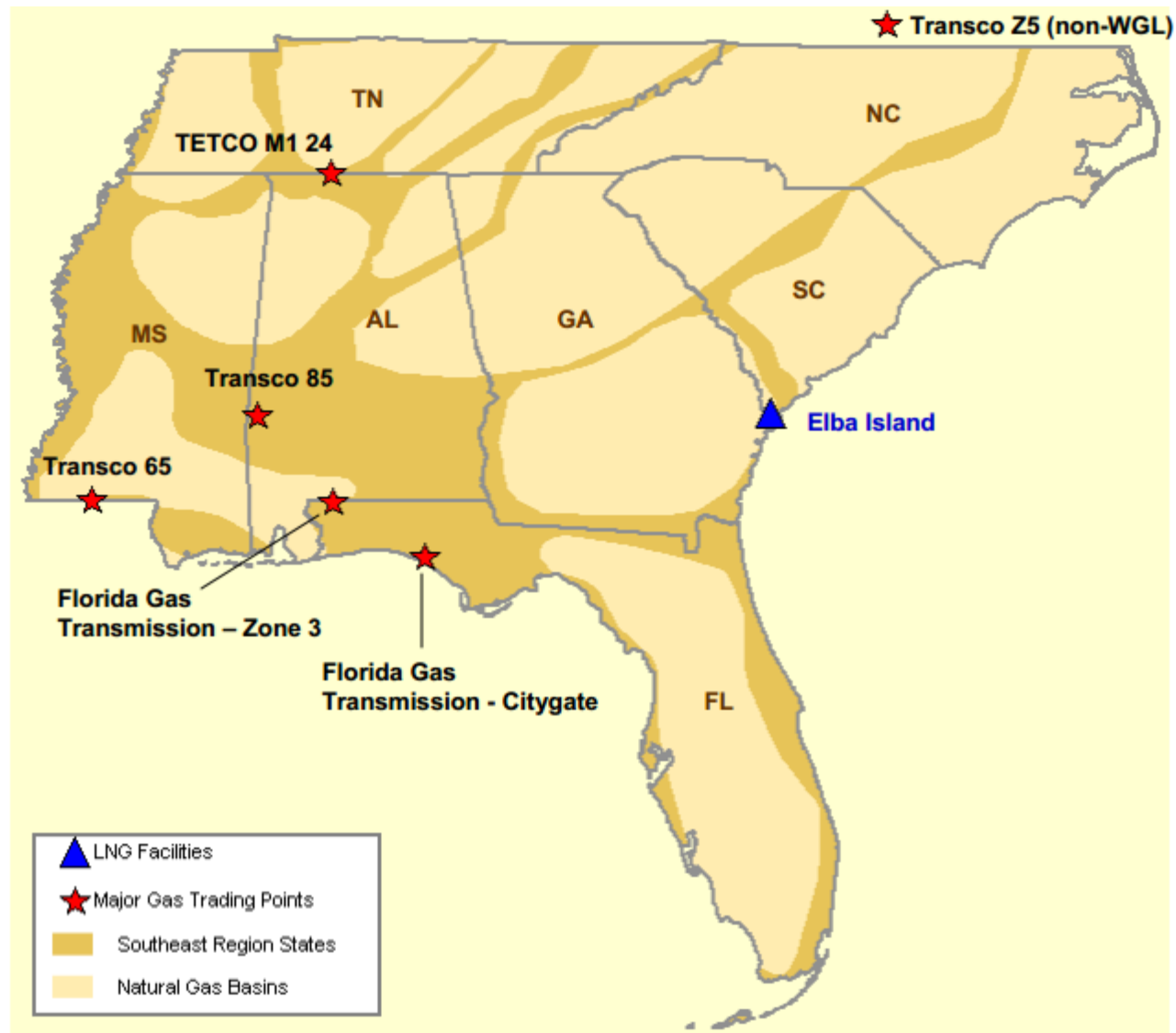


## Southeast Natural Gas Region



## Southeast Day-Ahead Prices Averaged Annually/Seasonally

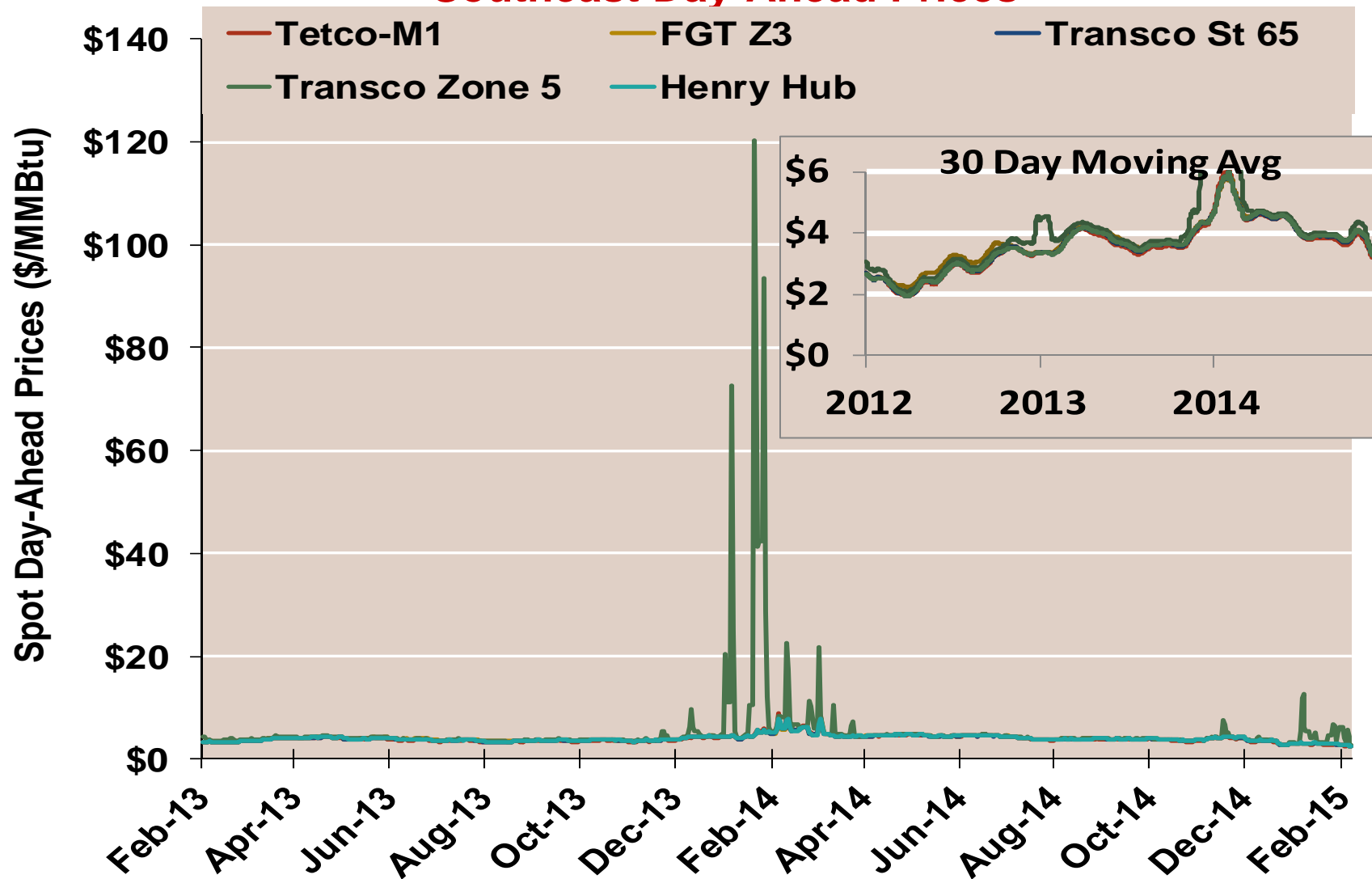
	Average Day Ahead Prices (\$/MMBtu)	FGT Z3	Tetco-M1	Transco St 65	Transco Zone 5	Henry Hub
2012	Annual	2.94	2.73	2.75	2.94	2.75
	Summer	2.97	2.65	2.67	2.81	2.69
	Winter 2012/2013	3.51	3.47	3.48	3.95	3.47
2013	Annual	3.77	3.66	3.71	4.01	3.72
	Summer	3.83	3.68	3.74	3.88	3.76
	Winter 2013/2014	4.62	4.61	4.60	9.44	4.61
2014	Annual	4.34	4.28	4.30	6.32	4.32
	Summer	4.21	4.12	4.16	4.24	4.18
	Winter 2014/2015	3.64	3.55	3.61	4.25	3.64
2015 YTD	Annual	3.04	3.00	3.02	6.84	3.03
	Summer					
	Winter 2015/2016					

Notes:

Source: Derived from Bloomberg ICE data

Updated 2/12/2015

### Southeast Day-Ahead Prices

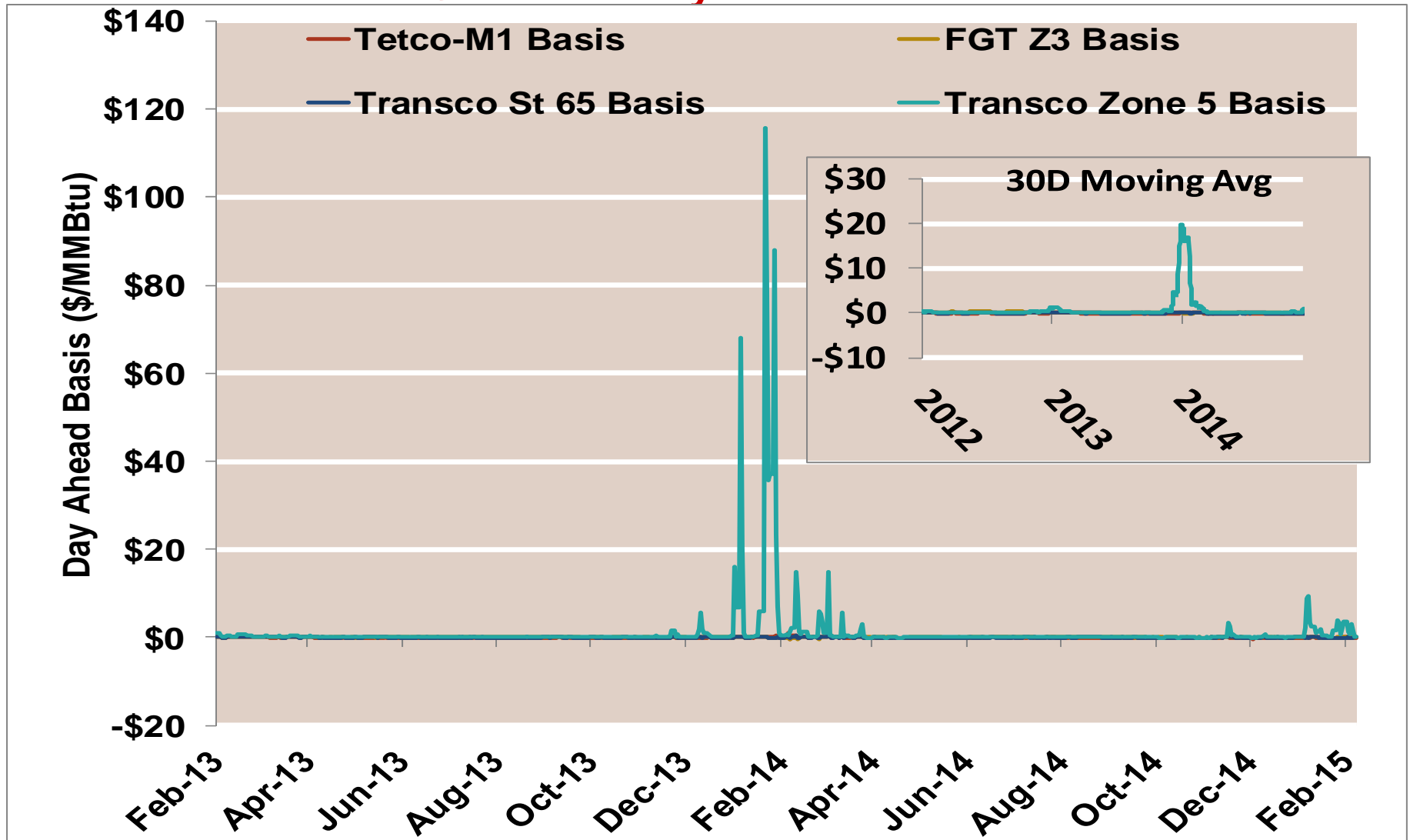


Notes:

Source: Derived from Bloomberg ICE data

Updated 2/12/2015

## Southeast Day-Ahead Basis

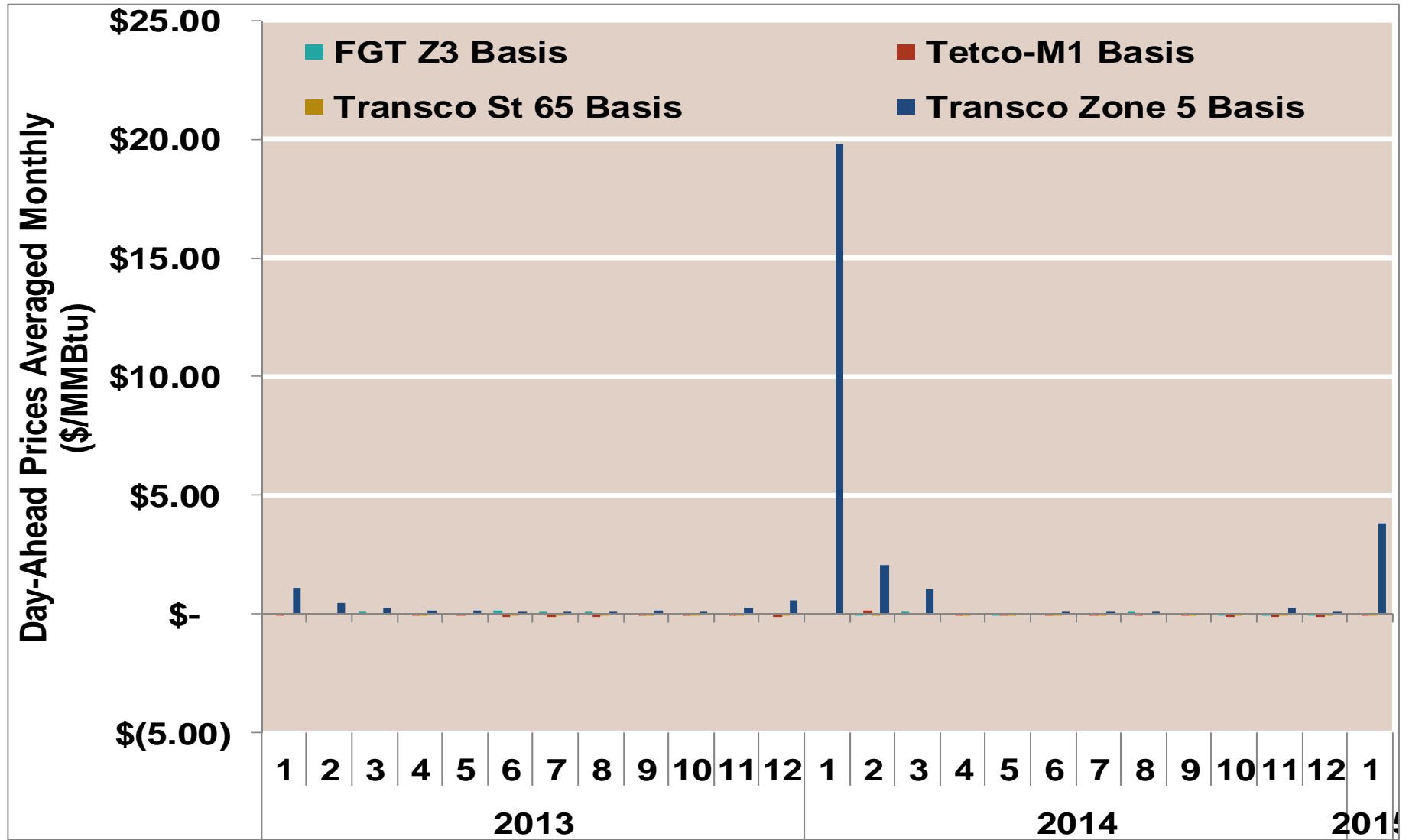


Notes:

Source: Derived from Bloomberg ICE data

Updated 2/12/2015

## Southeast Basis to Henry Hub Averaged Monthly

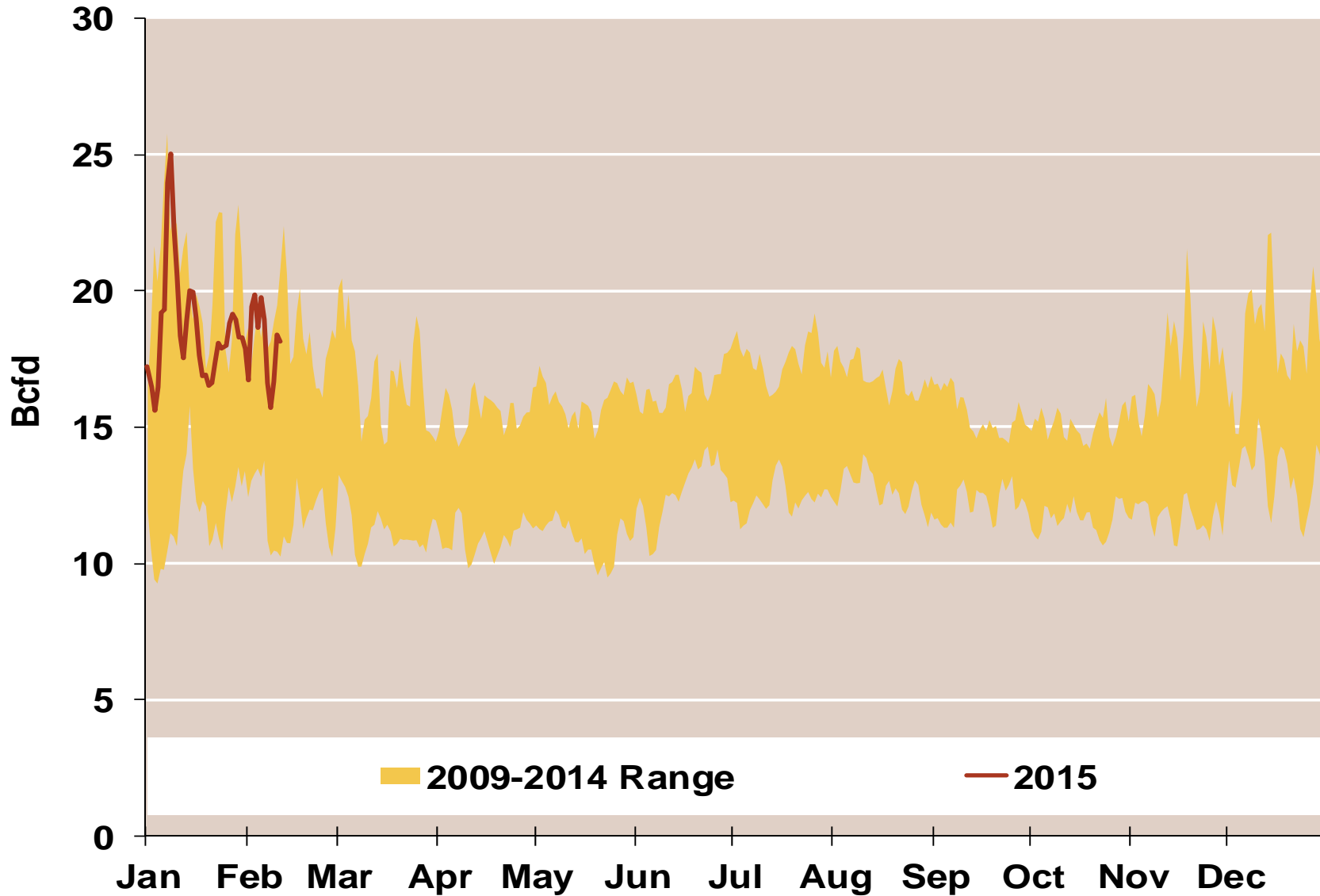


Notes:

Source: Derived from ICE data

Updated 2/12/2015

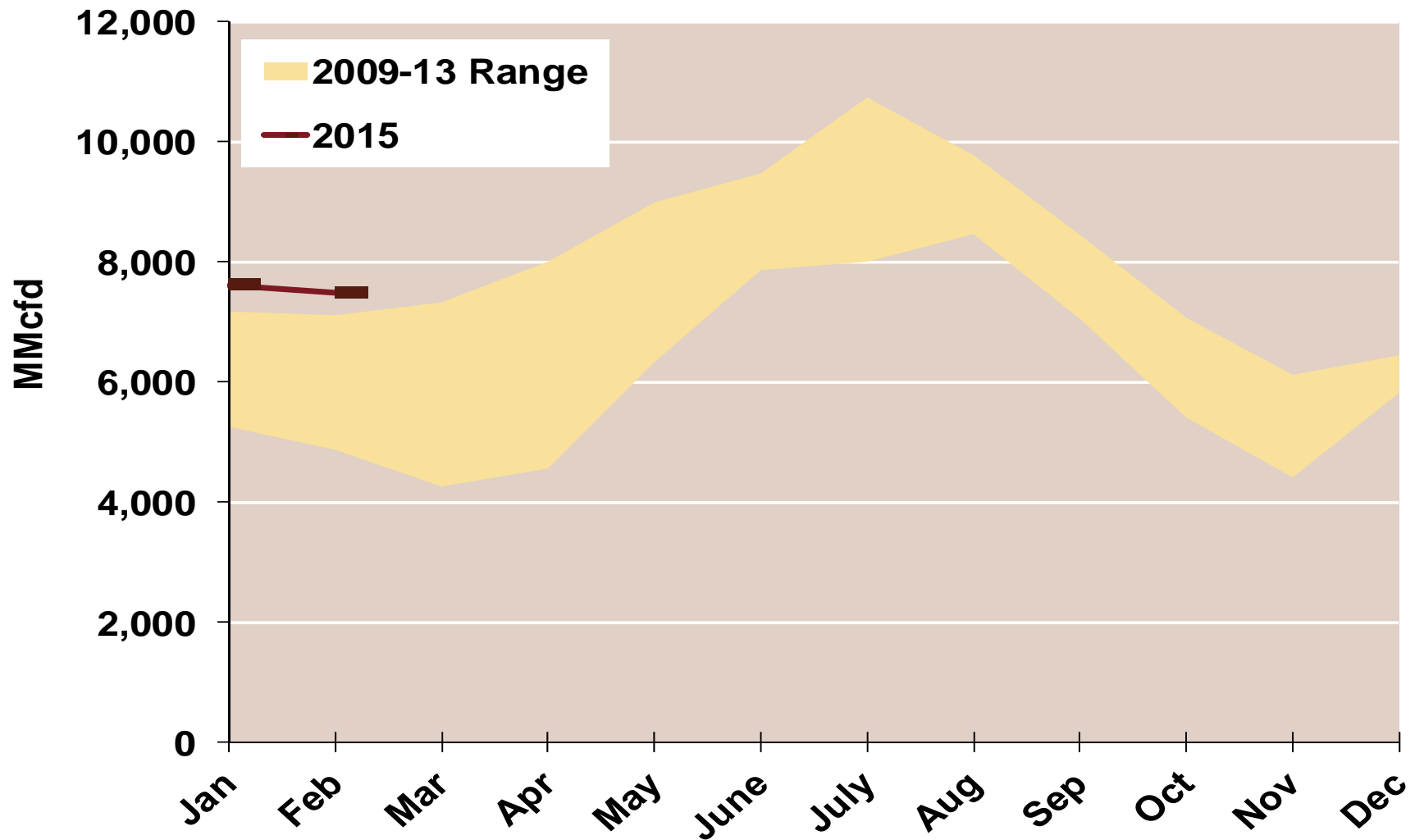
## Daily Southeast Natural Gas Demand All Sectors



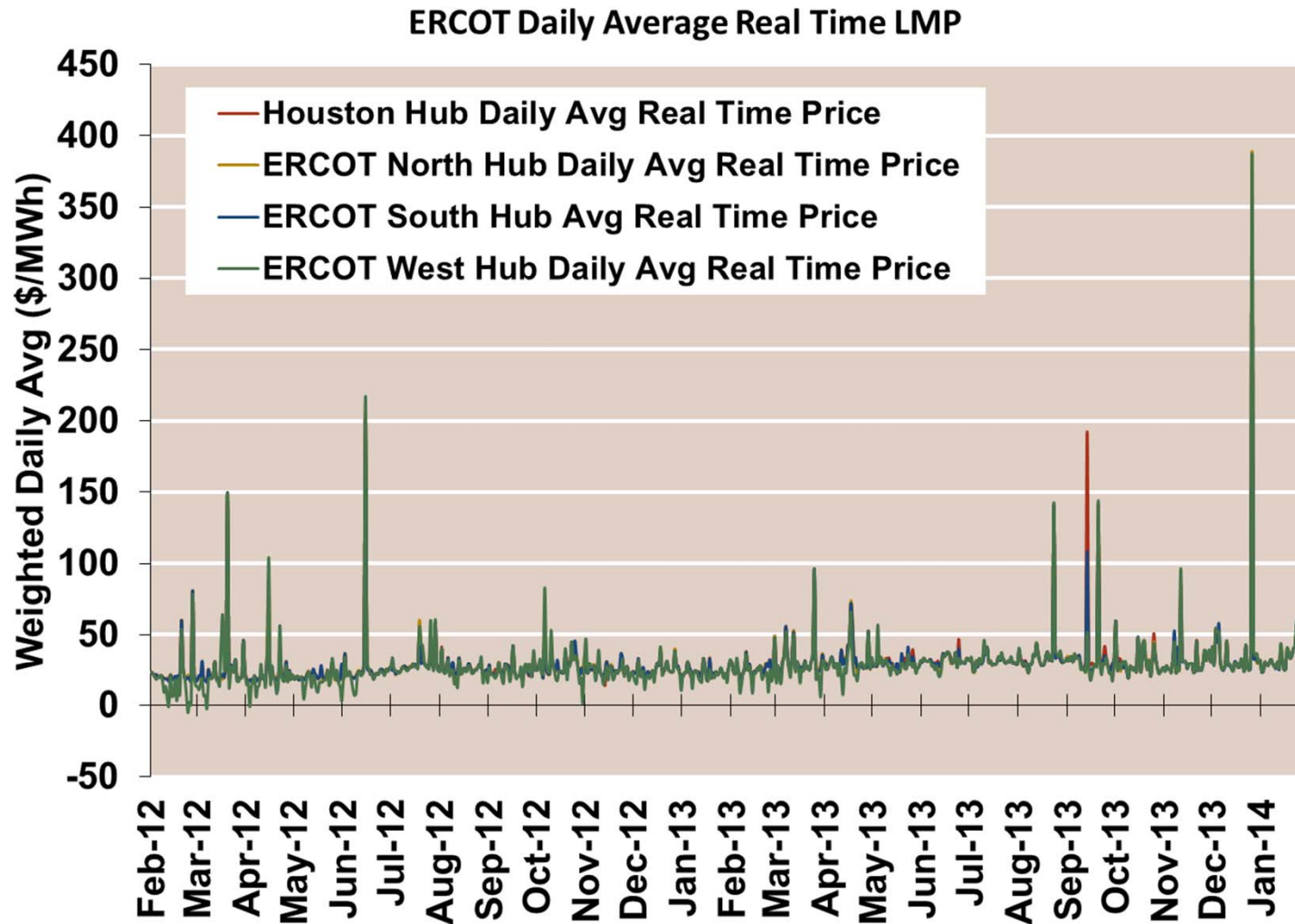
Source: Derived from *Bentek Energy* data

Updated: January 2015

## Southeast Natural Gas Consumption for Power Generation



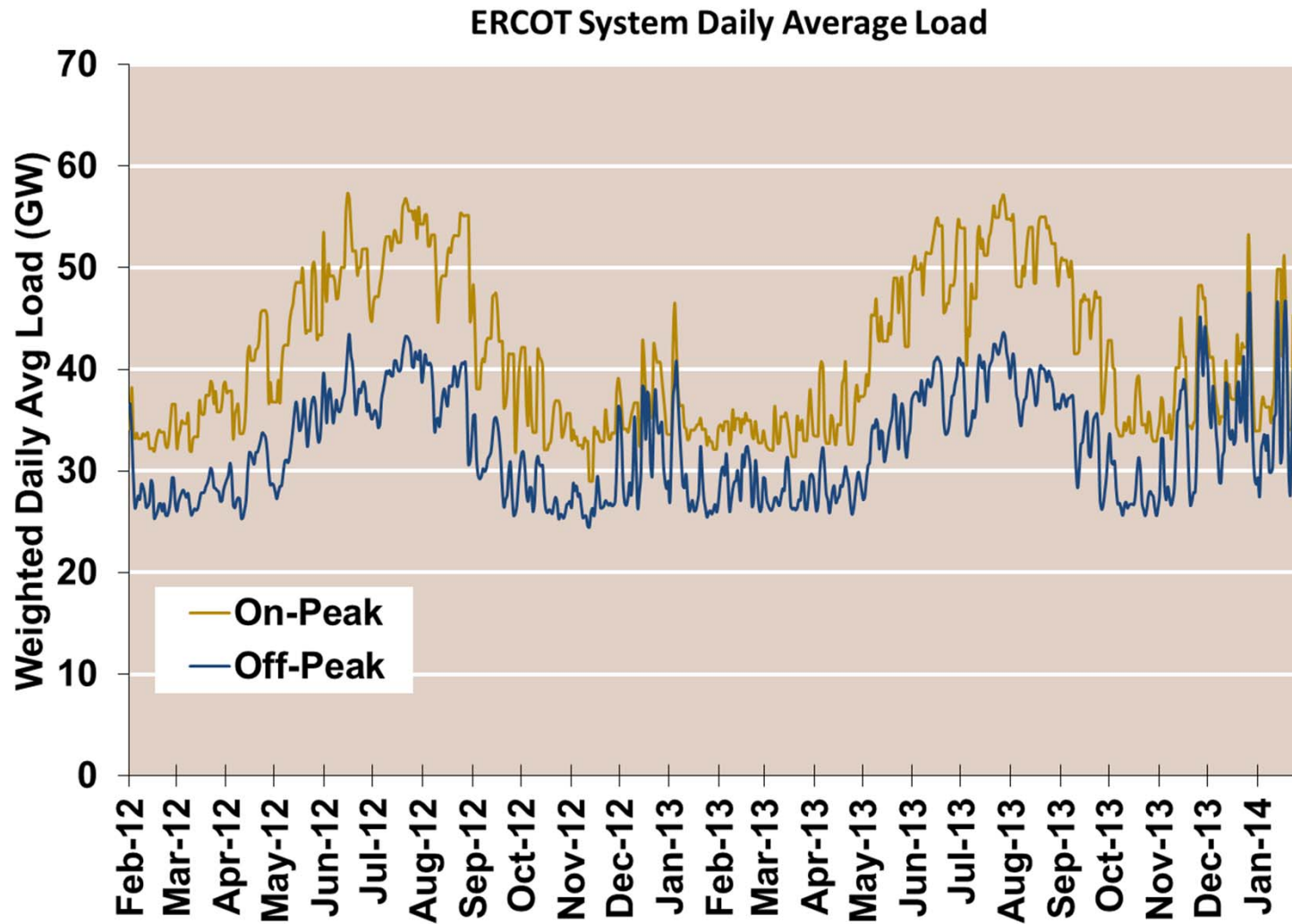
## ERCOT Real Time Prices—Two Year History



Source: Genscape via Bloomberg



## ERCOT System Daily Average Load —Two Year History



Source: Genscape via Bloomberg