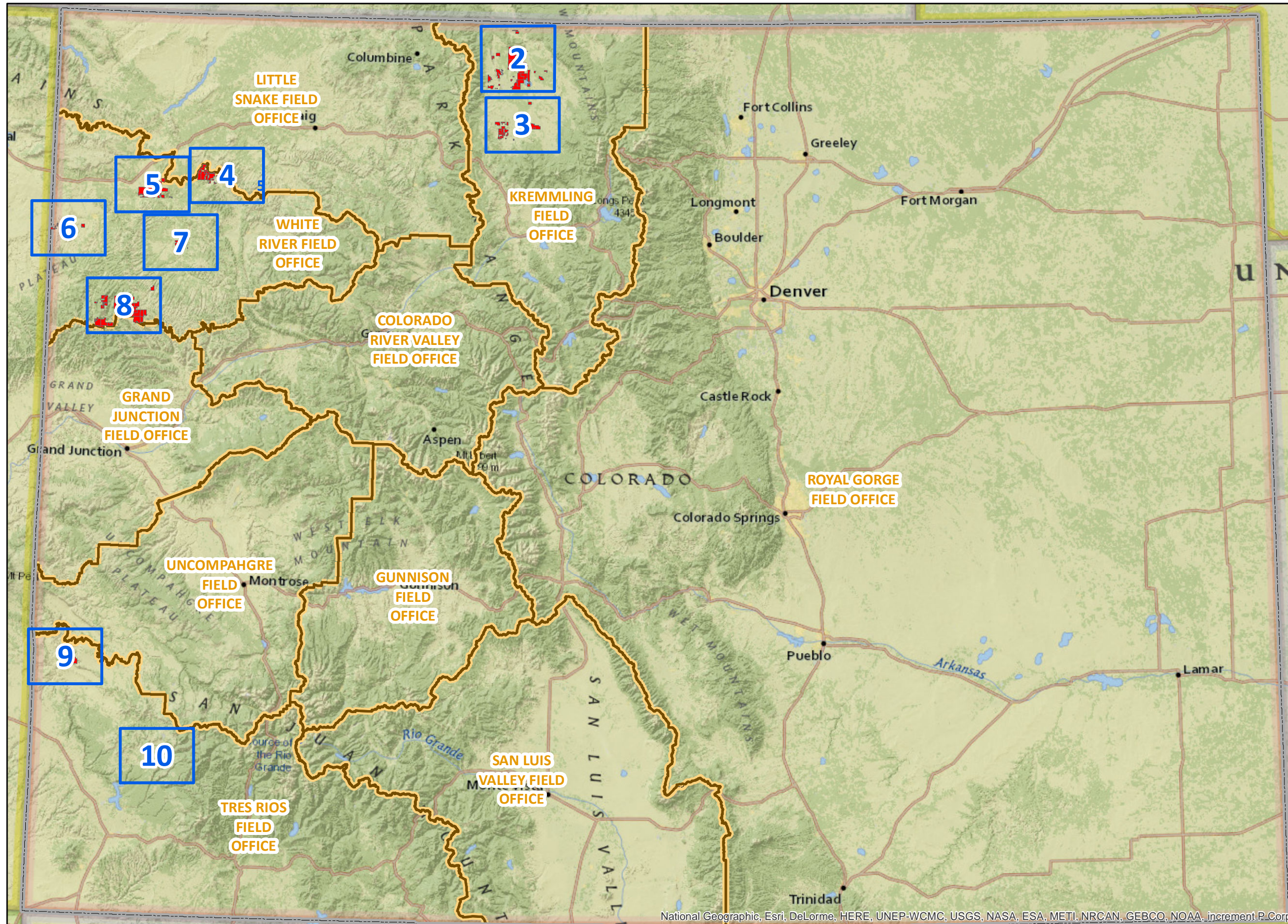


BLM Competitive Oil and Gas Lease Sale June 12, 2014



Legend

- Parcel Locations
- Detailed Map View Pages
- State Boundary
- BLM Field Office Boundaries

Please click on the Close Up Map Pages to see more detail.

Click on the Page Navigation Tools to return to this Index map on Page 1.



NOTE TO MAP USERS
No warrantee is made by the Bureau of Land Management as to the accuracy, reliability, or completeness of the data layers shown on this map. The official land records should be checked for the current status on any specific tract of land.

Legend

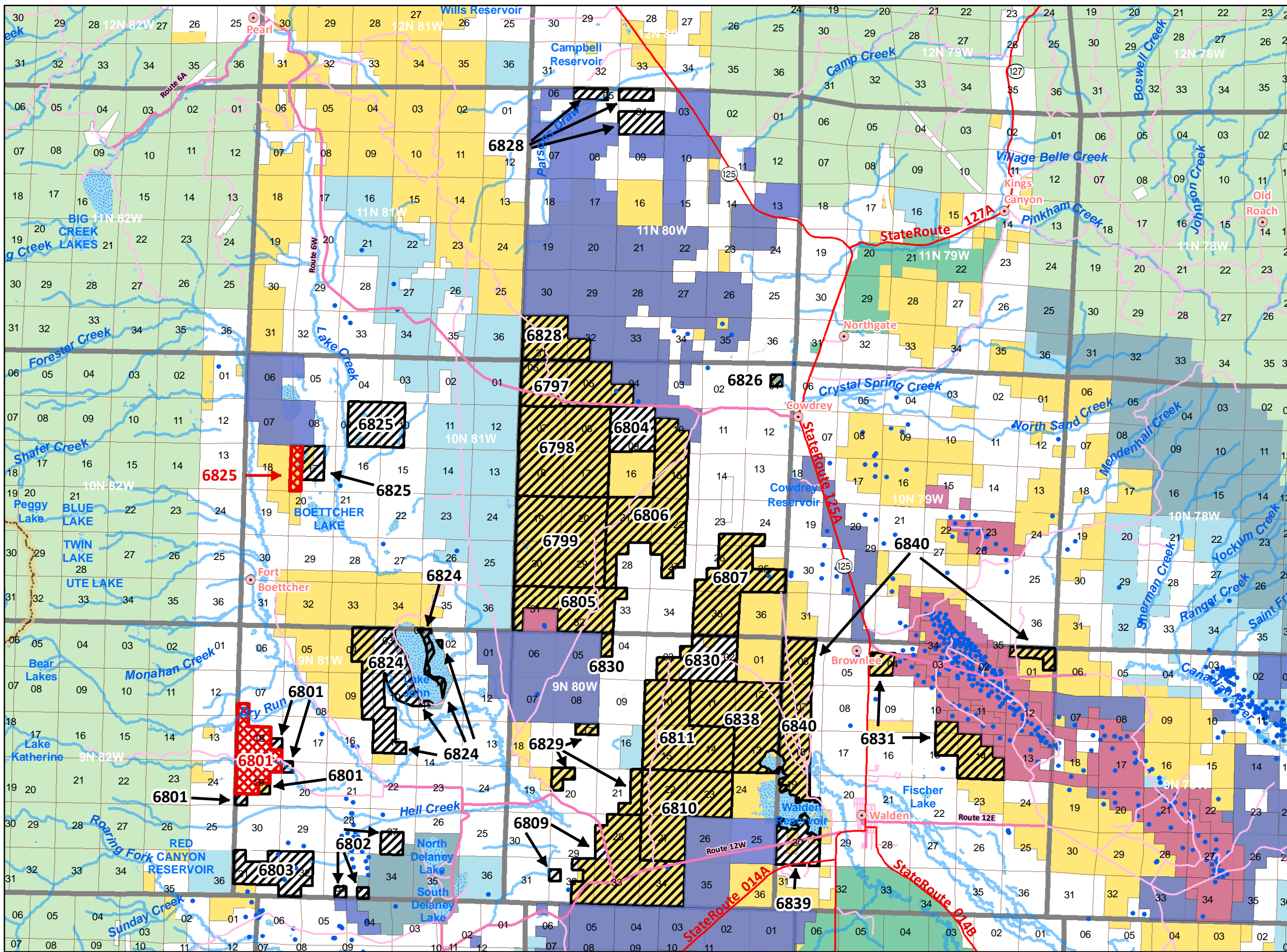
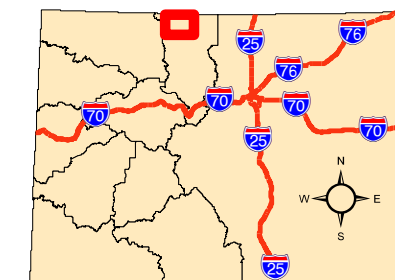
- BLM Field Office Areas
- Recommended Oil & Gas Sale Status**
- Deferral
- Sale
- COGCC Oil and Gas Well Locations
- Oil and Gas Leases**
- Non-Producing Leases
- Producing Leases
- Bureau of Land Management
- Private
- State
- State, County, City; Areas
- US Fish and Wildlife Service
- US Forest Service
- Township & Range
- Sections
- Lakes and Reservoirs
- Minor Highways
- CDOT Local Roads
- Streams
- USGS Cities and Towns

2.5

Miles

**Map Page Location
Page Number 2**

KREMMLING FIELD OFFICE





NOTE TO MAP USERS
No warrantee is made by the Bureau of Land Management as to the accuracy, reliability, or completeness of the data layers shown on this map. The official land records should be checked for the current status on any specific tract of land.

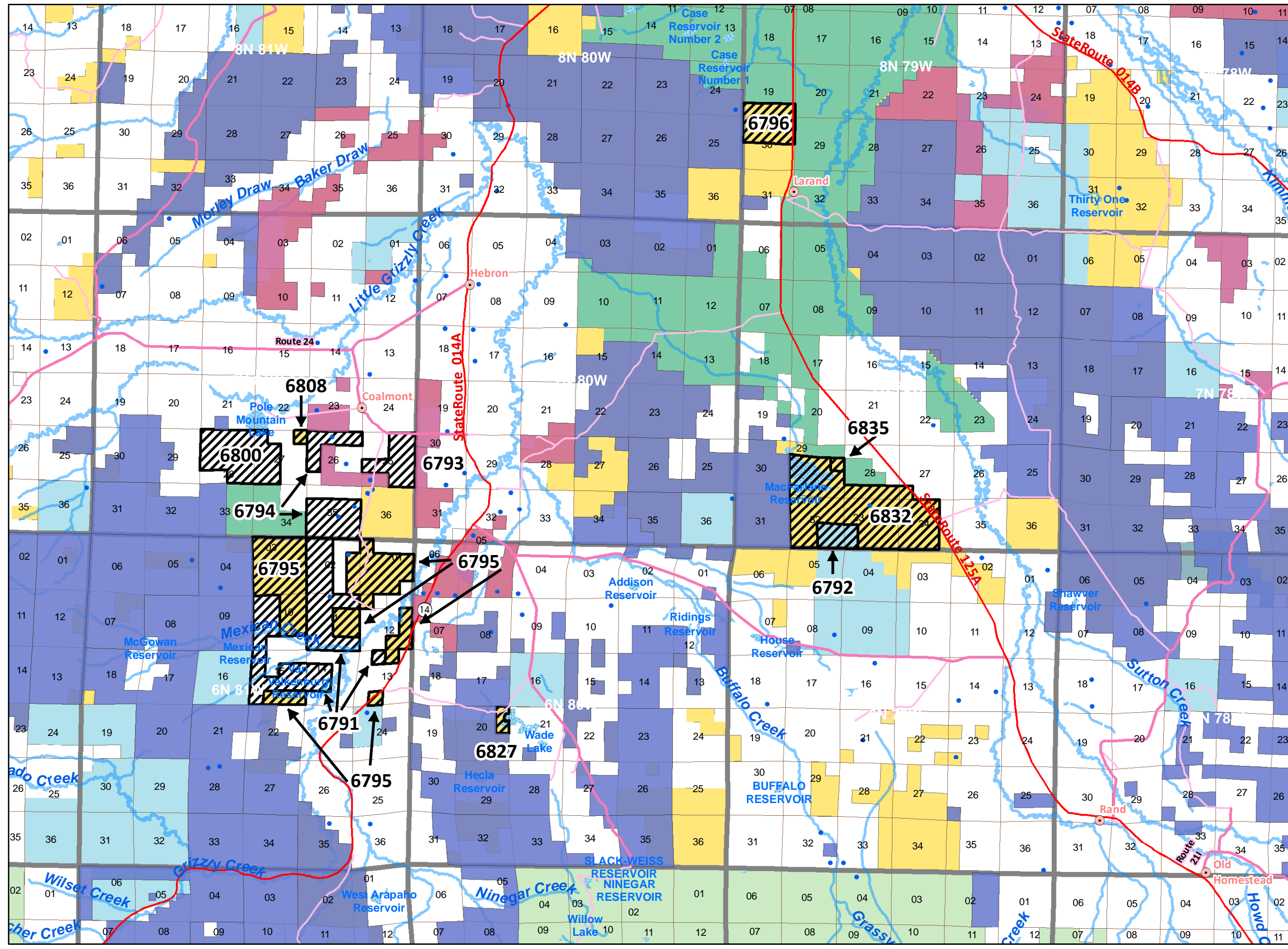
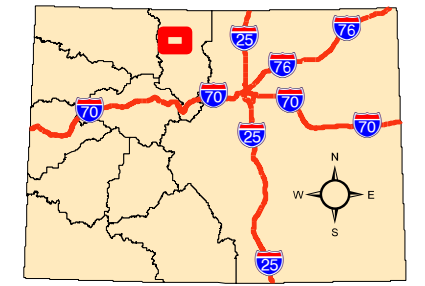
Legend

- BLM Field Office Areas
- Recommended Oil & Gas Sale Status**
- Deferral
- COGCC Oil and Gas Well Locations
- Oil and Gas Leases**
- Non-Producing Leases
- Producing Leases
- Bureau of Land Management
- Private
- State
- State, County, City; Areas
- US Fish and Wildlife Service
- US Forest Service
- Township & Range
- Sections
- Lakes and Reservoirs
- Minor Highways
- CDOT Local Roads
- Streams
- USGS Cities and Towns

2 Miles

**Map Page Location
Page Number 3**

KREMMLING FIELD OFFICE





NOTE TO MAP USERS
No warrantee is made by the Bureau of Land Management as to the accuracy, reliability, or completeness of the data layers shown on this map. The official land records should be checked for the current status on any specific tract of land.

Legend

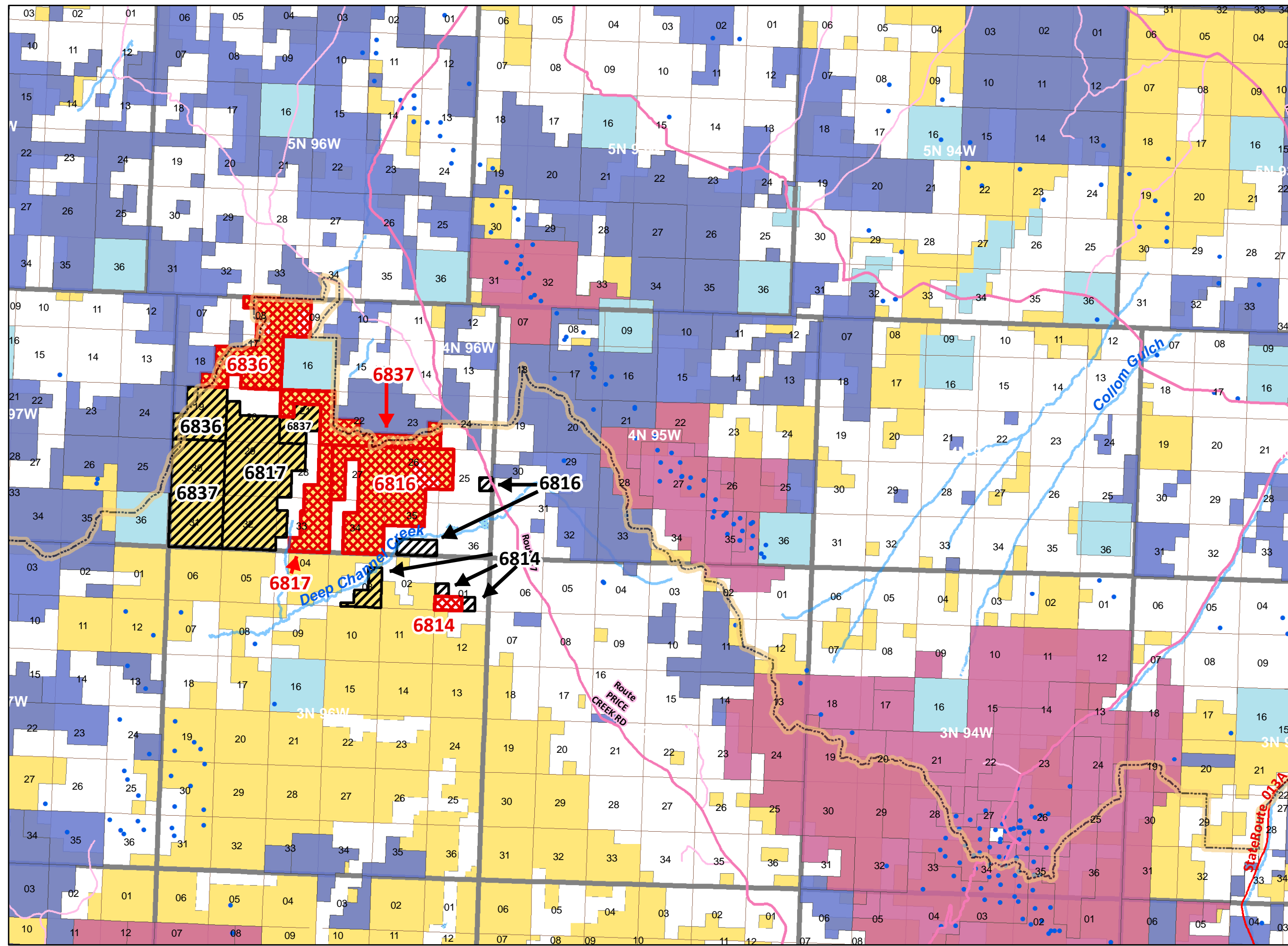
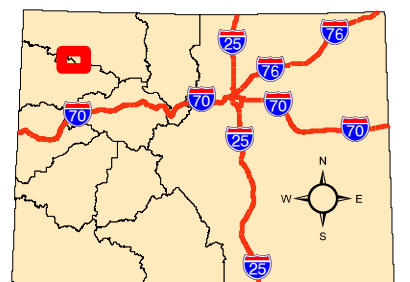
- BLM Field Office Areas
- Recommended Oil & Gas Sale Status**
 - Deferral
 - Sale
- COGCC Oil and Gas Well Locations
- Oil and Gas Leases**
 - Non-Producing Leases
 - Producing Leases
 - Bureau of Land Management
 - Private
 - State
 - State, County, City; Areas
 - Township & Range
 - Sections
 - Lakes and Reservoirs
 - Minor Highways
 - CDOT Local Roads
 - Streams
 - USGS Cities and Towns

2

Miles

**Map Page Location
Page Number 4**

WHITE RIVER FIELD OFFICE





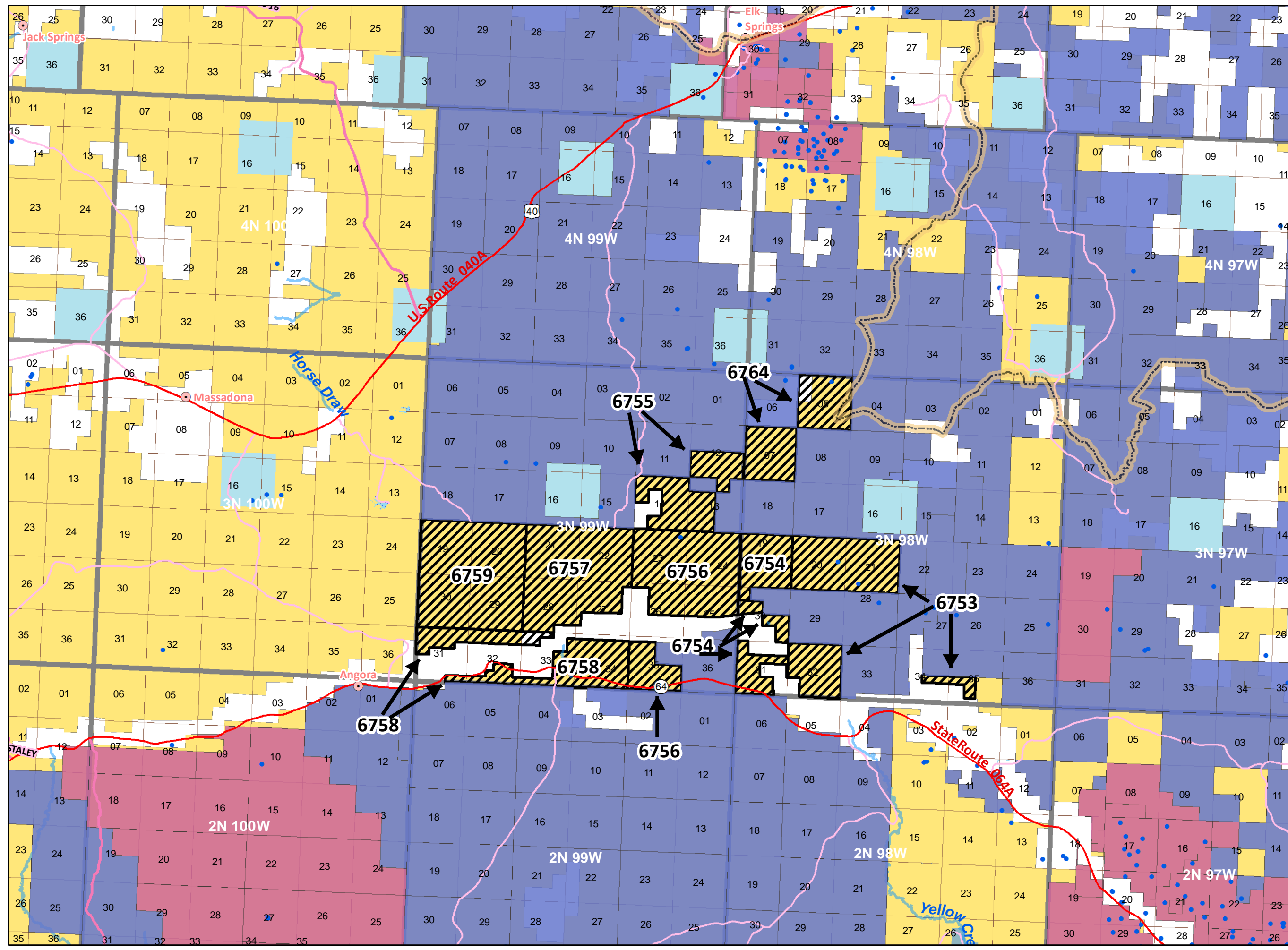
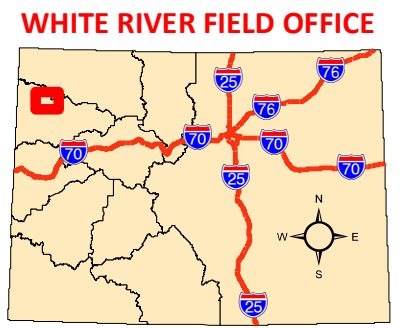
NOTE TO MAP USERS
No warrantee is made by the Bureau of Land Management as to the accuracy, reliability, or completeness of the data layers shown on this map. The official land records should be checked for the current status on any specific tract of land.

Legend

- BLM Field Office Areas
- Recommended Oil & Gas Sale Status**
- Deferral
- COGCC Oil and Gas Well Locations
- Oil and Gas Leases**
- Non-Producing Leases
- Producing Leases
- Bureau of Land Management
- Private
- State
- State, County, City; Areas
- Township & Range
- Sections
- Lakes and Reservoirs
- Minor Highways
- CDOT Local Roads
- Streams
- USGS Cities and Towns

2
Miles

**Map Page Location
Page Number 5**



**Bureau of Land Management
Competitive Oil & Gas Lease Sale
June 12, 2014**



NOTE TO MAP USERS
No warrantee is made by the Bureau of Land Management as to the accuracy, reliability, or completeness of the data layers shown on this map. The official land records should be checked for the current status on any specific tract of land.

Legend

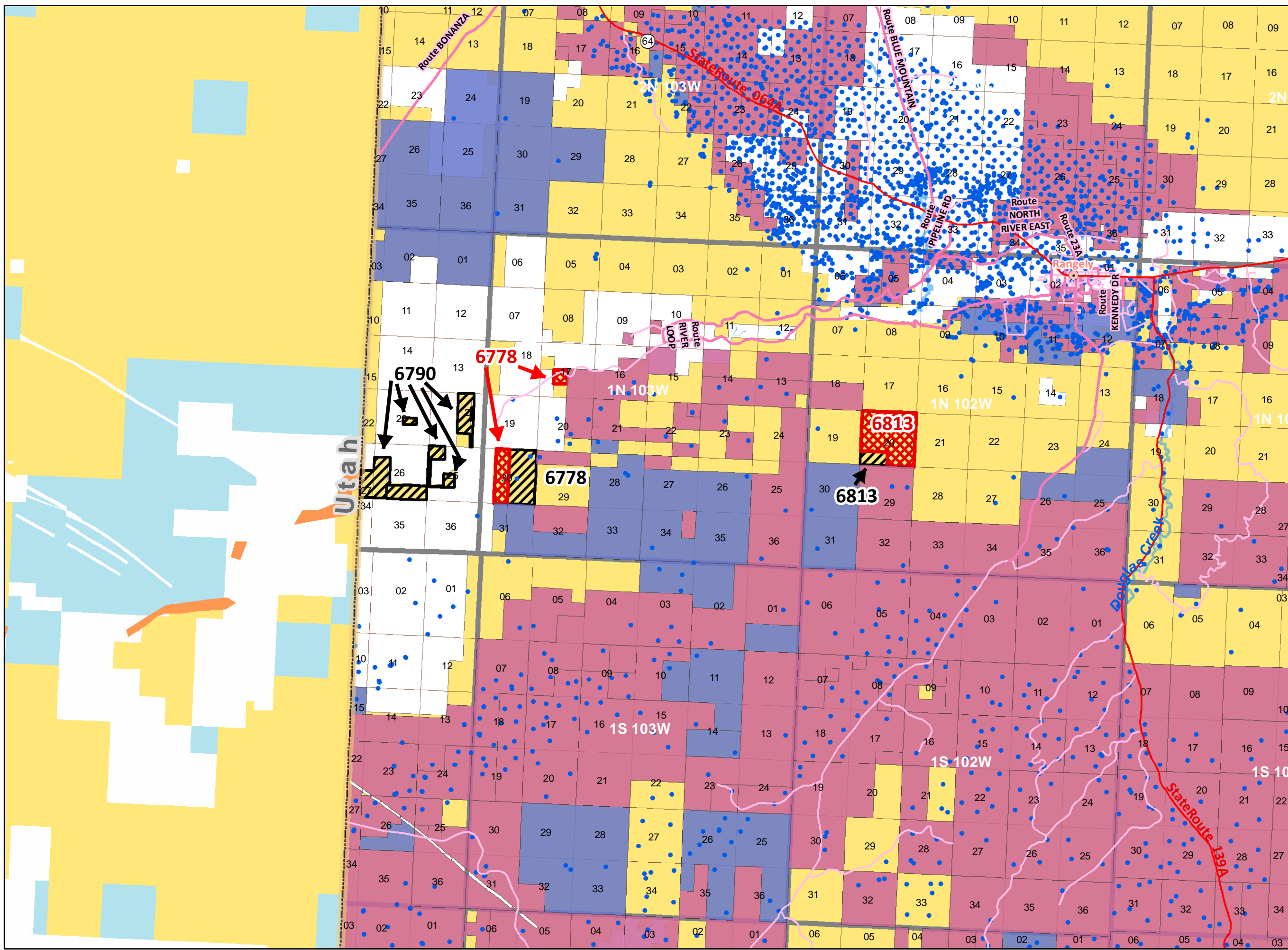
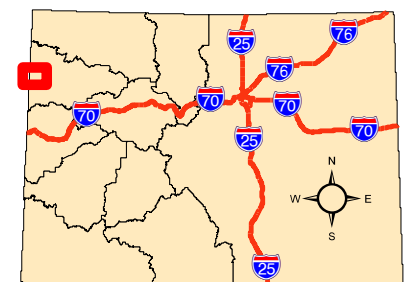
- USA State Boundaries
- BLM Field Office Areas
- Recommended Oil & Gas Sale Status**
- Deferral
- Sale
- COGCC Oil and Gas Well Locations
- Oil and Gas Leases**
- Non-Producing Leases
- Producing Leases
- Bureau of Land Management
- Private
- State
- Township & Range
- Sections
- Lakes and Reservoirs
- Minor Highways
- CDOT Local Roads
- Streams
- USGS Cities and Towns

2

Miles

**Map Page Location
Page Number 6**

WHITE RIVER FIELD OFFICE

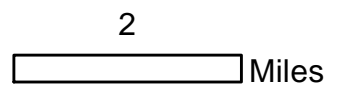




NOTE TO MAP USERS
No warrantee is made by the Bureau of Land Management as to the accuracy, reliability, or completeness of the data layers shown on this map. The official land records should be checked for the current status on any specific tract of land.

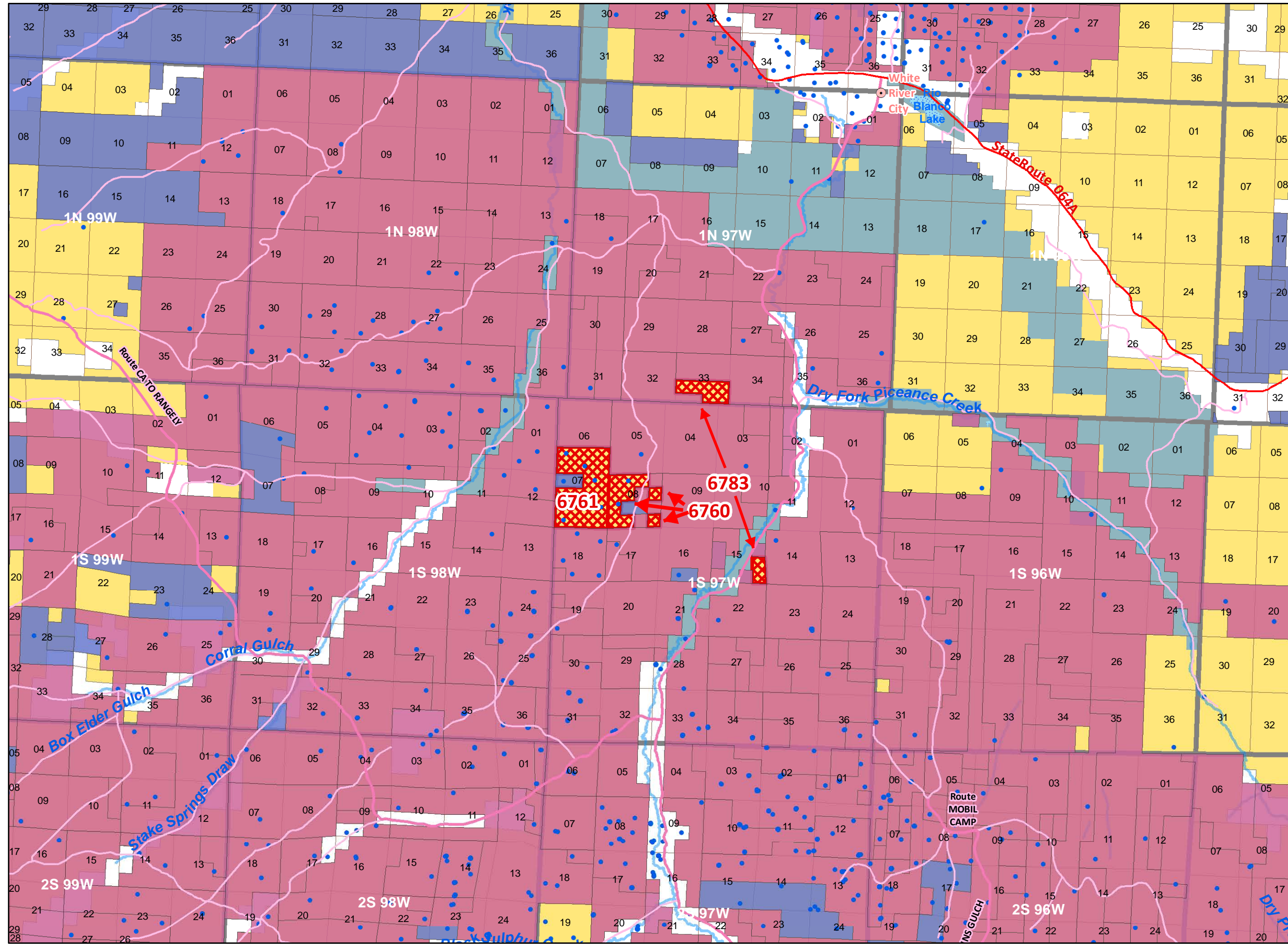
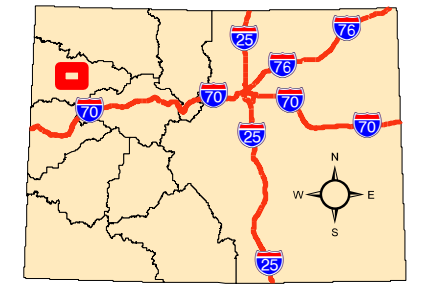
Legend

- BLM Field Office Areas
- Recommended Oil & Gas Sale Status**
- Sale
- COGCC Oil and Gas Well Locations
- Oil and Gas Leases**
- Non-Producing Leases
- Producing Leases
- Bureau of Land Management
- Private
- State, County, City; Areas
- Township & Range
- Sections
- Lakes and Reservoirs
- Minor Highways
- CDOT Local Roads
- Streams
- USGS Cities and Towns



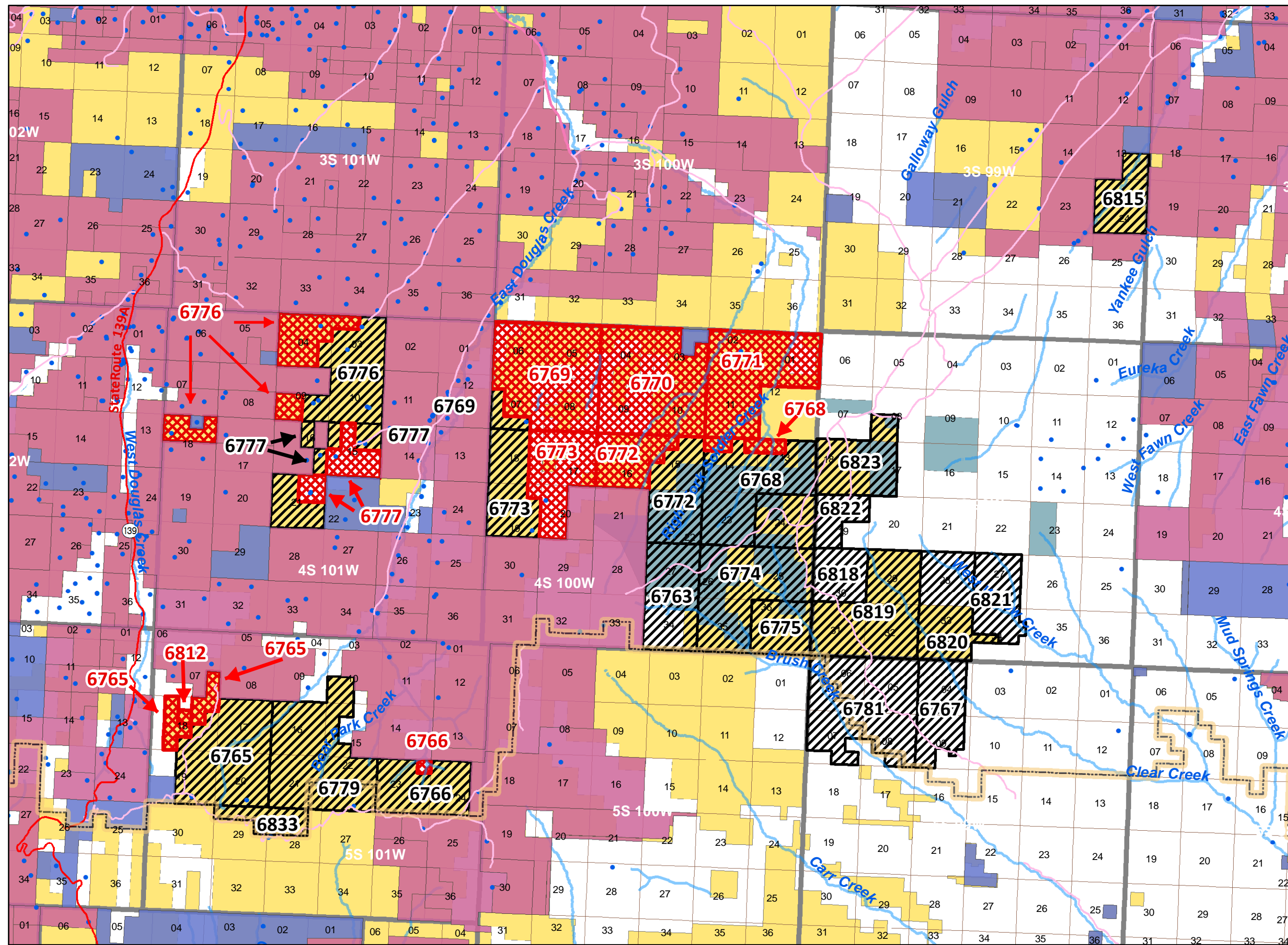
**Map Page Location
Page Number 7**

WHITE RIVER FIELD OFFICE



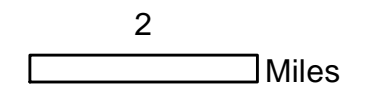


NOTE TO MAP USERS
No warrantee is made by the Bureau of Land Management as to the accuracy, reliability, or completeness of the data layers shown on this map. The official land records should be checked for the current status on any specific tract of land.

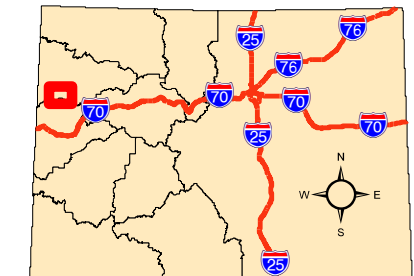


Legend

- BLM Field Office Areas
- Recommended Oil & Gas Sale Status**
 - Deferral
 - Sale
- COGCC Oil and Gas Well Locations
- Oil and Gas Leases**
 - Non-Producing Leases
 - Producing Leases
 - Bureau of Land Management
 - Private
 - State, County, City; Areas
 - Township & Range
 - Sections
 - Lakes and Reservoirs
 - Minor Highways
 - CDOT Local Roads
 - Streams
 - USGS Cities and Towns



**Map Page Location
Page Number 8
GRAND JUNCTION FIELD OFFICE**



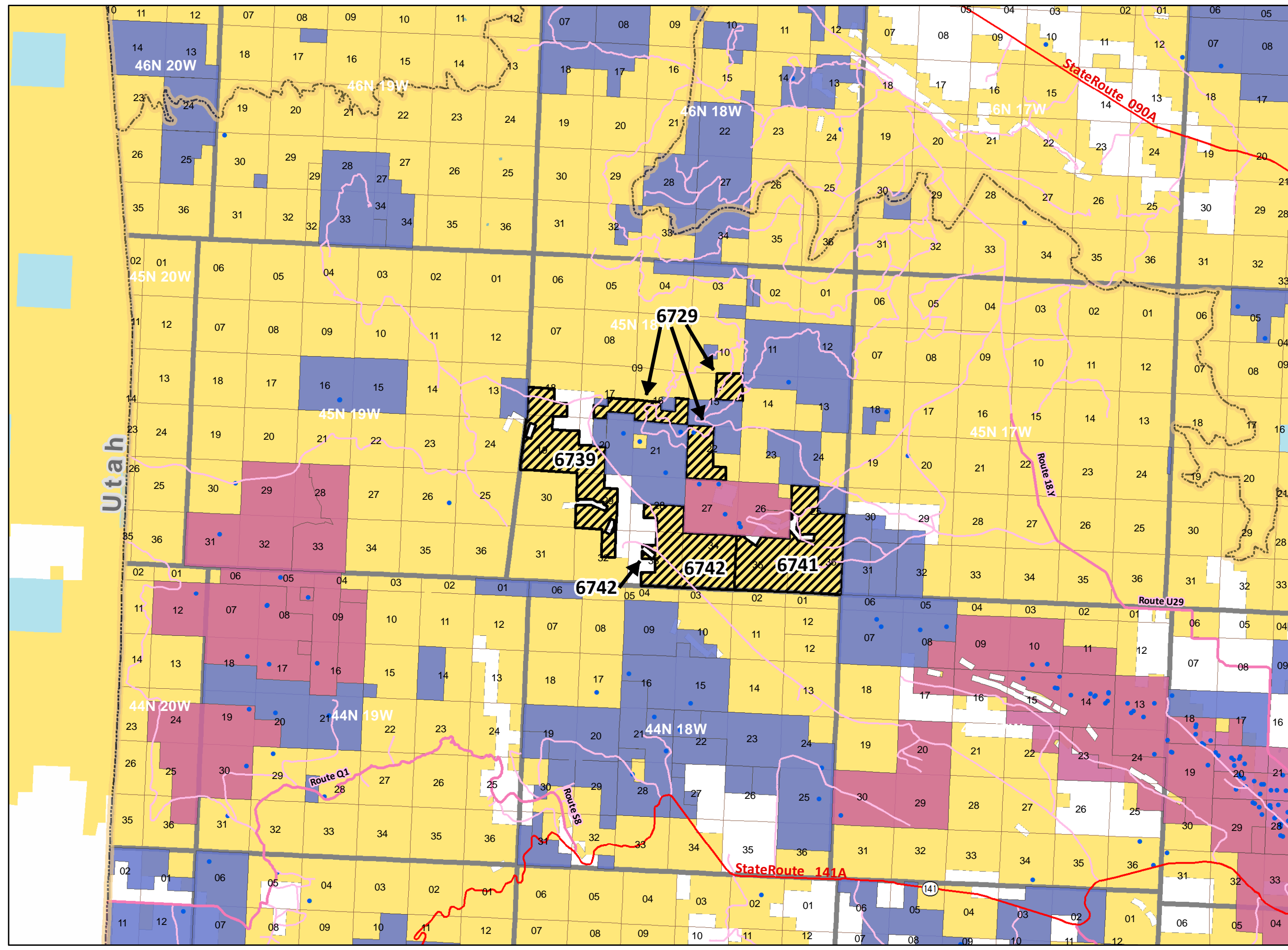
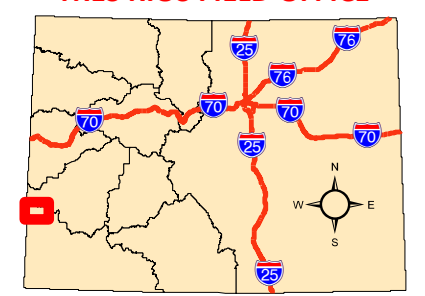


NOTE TO MAP USERS
No warrantee is made by the Bureau of Land Management as to the accuracy, reliability, or completeness of the data layers shown on this map. The official land records should be checked for the current status on any specific tract of land.

- Legend**
- USA State Boundaries
 - BLM Field Office Areas
 - Recommended Oil & Gas Sale Status**
 - Deferral
 - COGCC Oil and Gas Well Locations
 - Oil and Gas Leases**
 - Non-Producing Leases
 - Producing Leases
 - Bureau of Land Management
 - Private
 - State
 - Township & Range
 - Sections
 - Lakes and Reservoirs
 - Minor Highways
 - CDOT Local Roads
 - Streams
 - USGS Cities and Towns

2
Miles

Map Page Location
Page Number 9
TRES RIOS FIELD OFFICE



Utah



NOTE TO MAP USERS
No warrantee is made by the Bureau of Land Management as to the accuracy, reliability, or completeness of the data layers shown on this map. The official land records should be checked for the current status on any specific tract of land.

Legend

- BLM Field Office Areas
- Recommended Oil & Gas Sale Status**
- Deferral
- COGCC Oil and Gas Well Locations
- Oil and Gas Leases**
- Non-Producing Leases
- Bureau of Land Management
- Other Federal
- Private
- State
- State, County, City; Areas
- US Forest Service
- Township & Range
- Sections
- Lakes and Reservoirs
- Minor Highways
- CDOT Local Roads
- Streams
- USGS Cities and Towns

2

Miles

**Map Page Location
Page Number 10**

TRES RIOS FIELD OFFICE

