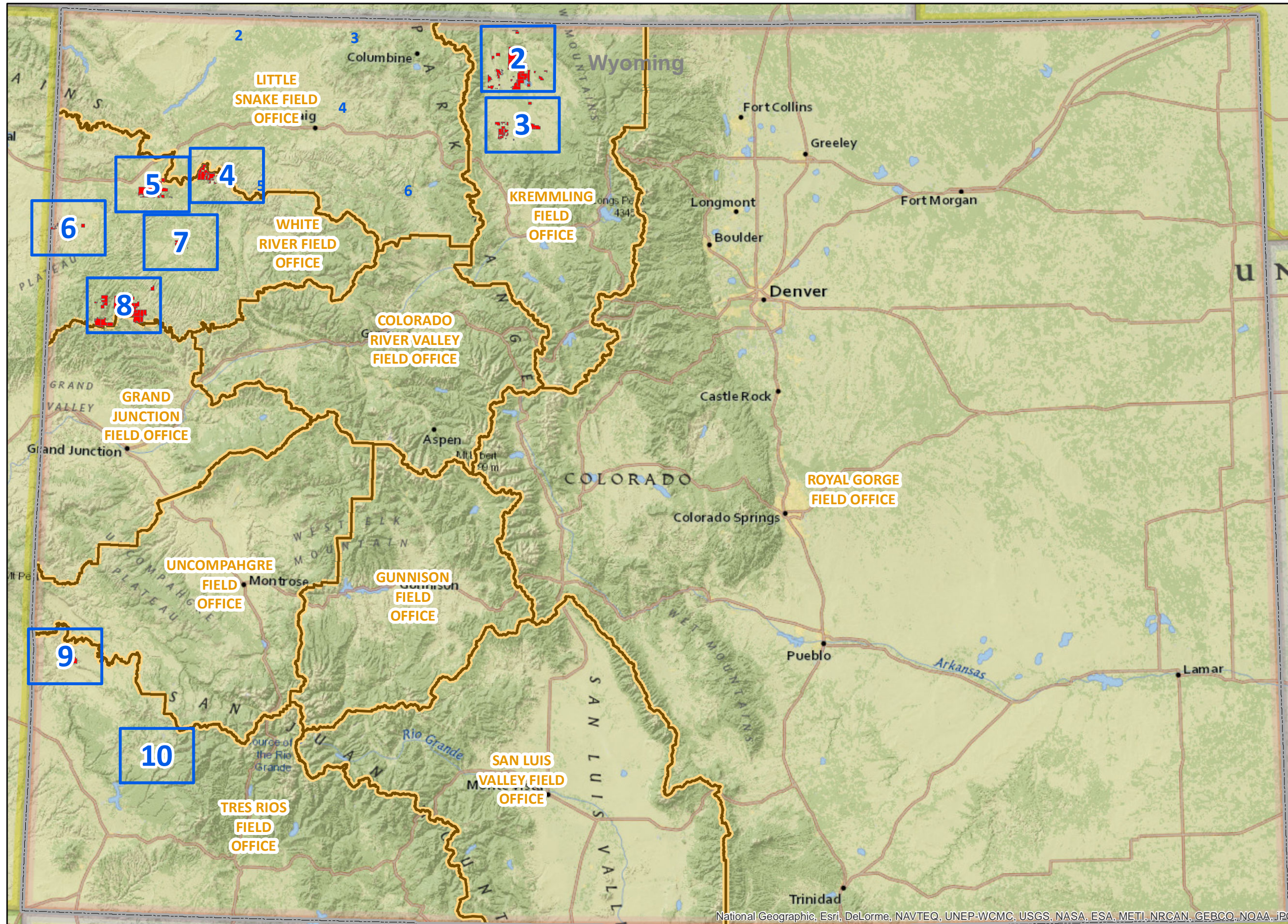


BLM Competitive Oil and Gas Lease Sale June 12, 2014



Legend

- Parcel Locations
- Detailed Map View Pages
- State Boundary
- BLM Field Office Boundaries

Please click on the Close Up Map Pages to see more detail.

2

Window Help

Click on the Home Tool to return to this Index map on Page 1.



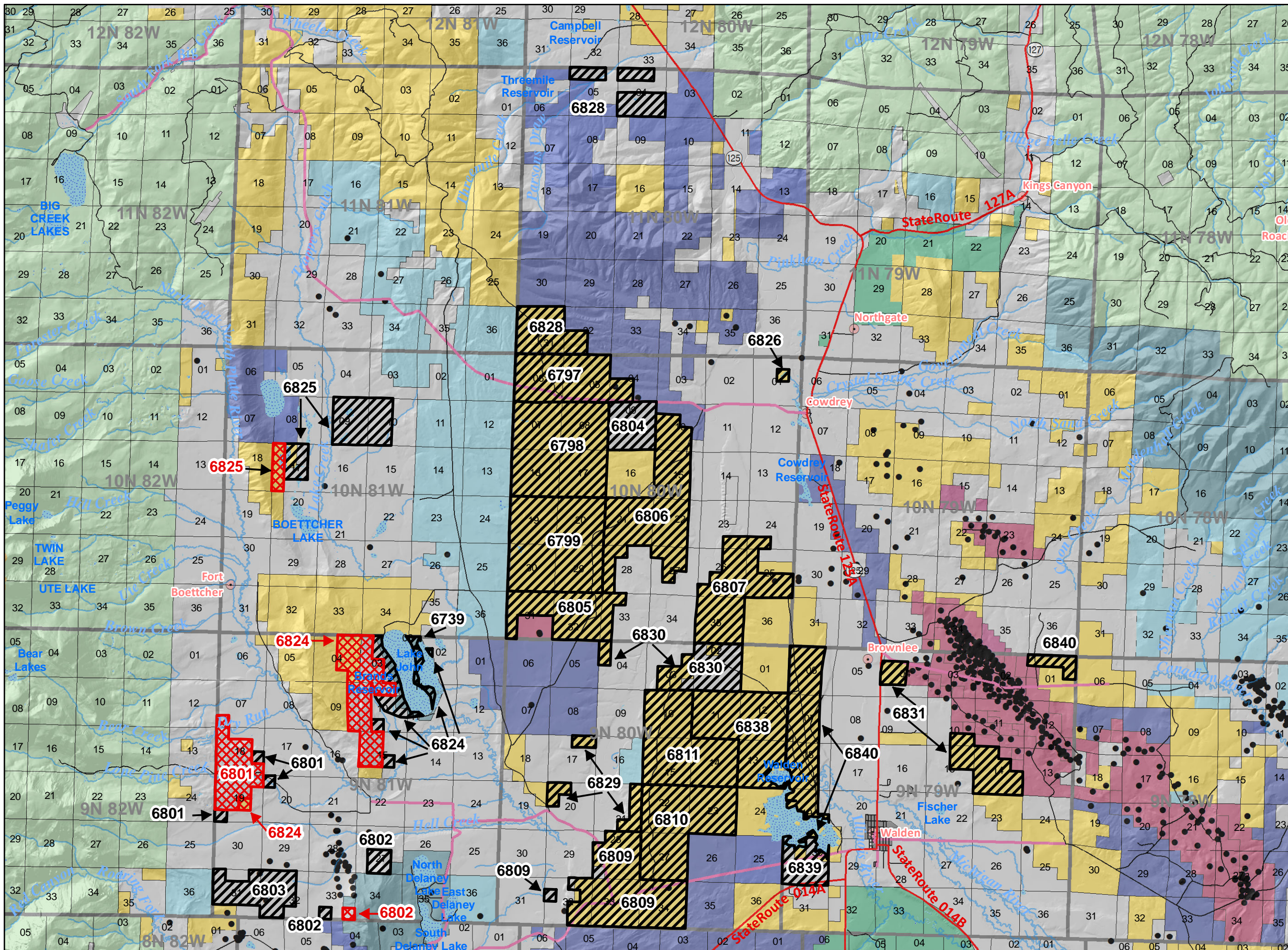
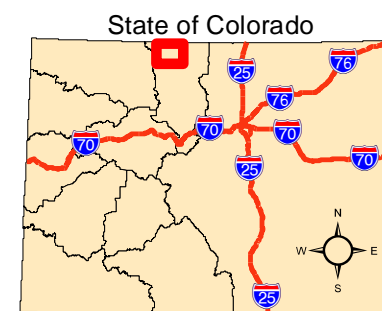
NOTE TO MAP USERS
No warrantee is made by the Bureau of Land Management as to the accuracy, reliability, or completeness of the data layers shown on this map. The official land records should be checked for the current status on any specific tract of land.

Legend

- BLM Field Office Areas
- Recommended Oil & Gas Sale Status
 - Deferral
 - Sale
- Oil and Gas Leases
 - Non-Producing Leases
 - Producing Leases
- COGCC Oil and Gas Well Locations
- Bureau of Land Management
- Private
- State
- State, County, City; Areas
- US Fish and Wildlife Service
- US Forest Service
- Township & Range
- Sections
- Minor Highways
- Lakes and Reservoirs
- Streams
- USGS Cities and Towns

1 Miles

Map Page Location





NOTE TO MAP USERS
No warrantee is made by the Bureau of Land Management as to the accuracy, reliability, or completeness of the data layers shown on this map. The official land records should be checked for the current status on any specific tract of land.

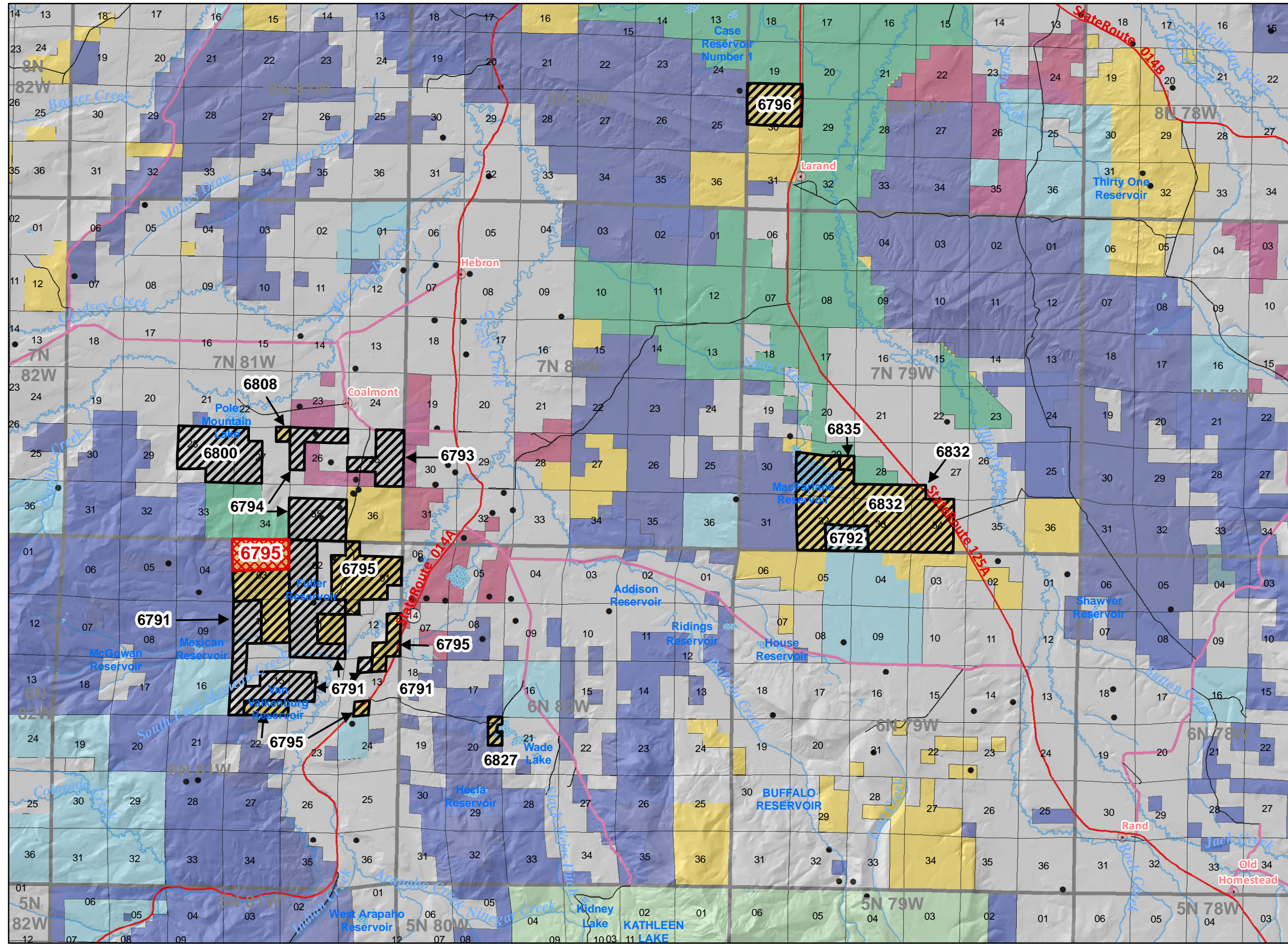
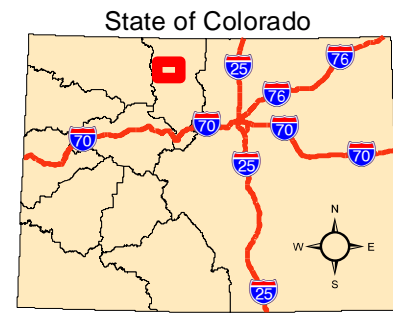
Legend

- BLM Field Office Areas
- Recommended Oil & Gas Sale Status**
- Deferral
- Sale
- Oil and Gas Leases**
- Non-Producing Leases
- Producing Leases
- COGCC Oil and Gas Well Locations
- Bureau of Land Management
- Private
- State
- State, County, City; Areas
- US Fish and Wildlife Service
- US Forest Service
- Township & Range
- Sections
- Minor Highways
- Lakes and Reservoirs
- Streams
- USGS Cities and Towns

1
Miles

Page Number 3

Map Page Location



Map grid coordinates: 8N, 7N, 6N, 5N; 82W, 81W, 80W, 79W, 78W.

State Routes: 014B, 125A.

Lease Numbers: 6796, 6808, 6800, 6794, 6795, 6791, 6793, 6835, 6832, 6792, 6827.

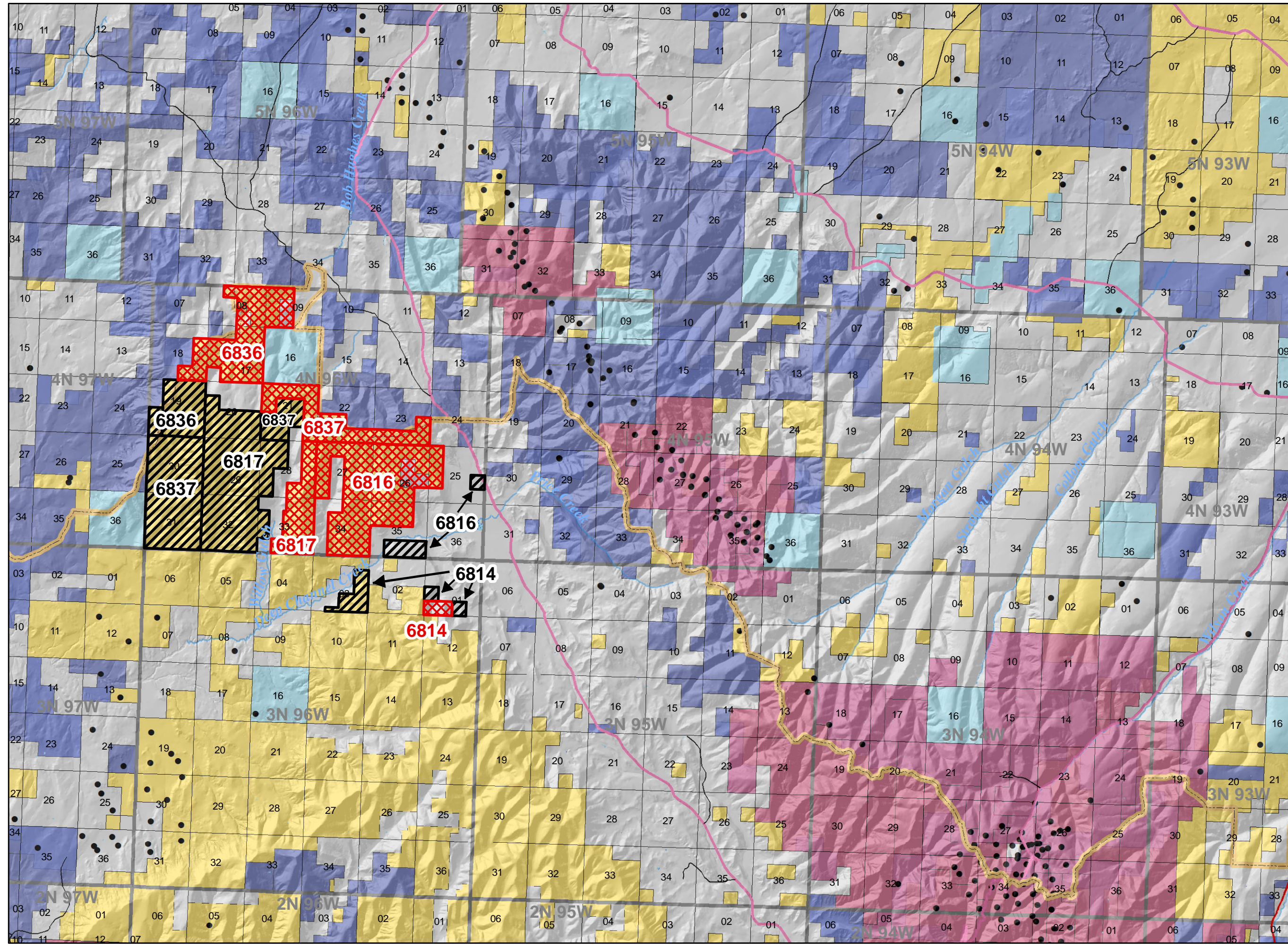
**BLM Oil & Gas Lease Sale
June 12, 2014**

Colorado BLM Field Office

WHITE RIVER FIELD OFFICE

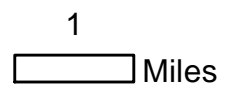


NOTE TO MAP USERS
No warranty is made by the Bureau of Land Management as to the accuracy, reliability, or completeness of the data layers shown on this map. The official land records should be checked for the current status on any specific tract of land.

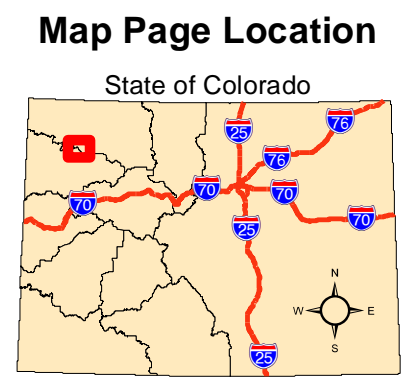


Legend

- BLM Field Office Areas
- Recommended Oil & Gas Sale Status**
 - Deferral
 - Sale
- Oil and Gas Leases**
 - Non-Producing Leases
 - Producing Leases
- COGCC Oil and Gas Well Locations
- Bureau of Land Management
- Private
- State
- Township & Range
- Sections
- Minor Highways
- Lakes and Reservoirs
- Streams



Page Number 4





NOTE TO MAP USERS
No warrantee is made by the Bureau of Land Management as to the accuracy, reliability, or completeness of the data layers shown on this map. The official land records should be checked for the current status on any specific tract of land.

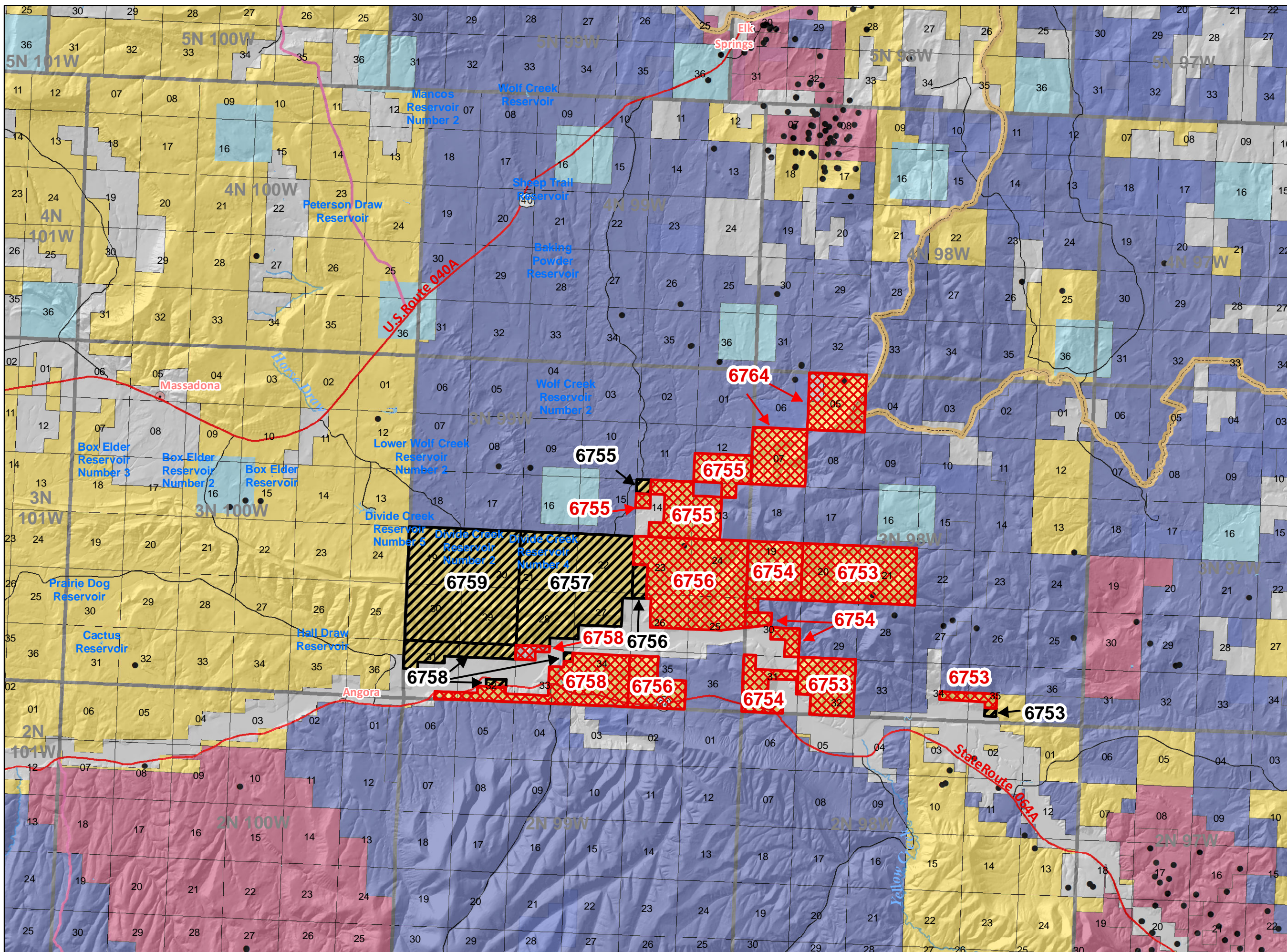
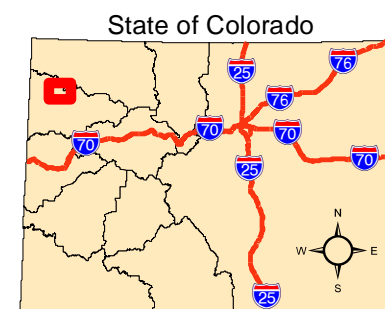
Legend

- BLM Field Office Areas
- Recommended Oil & Gas Sale Status
 - Deferral
 - Sale
- Oil and Gas Leases
 - Non-Producing Leases
 - Producing Leases
- COGCC Oil and Gas Well Locations
- Bureau of Land Management
- Private
- State
- Township & Range
- Sections
- Minor Highways
- Lakes and Reservoirs
- Streams
- USGS Cities and Towns

1 Miles

Page Number 5

Map Page Location



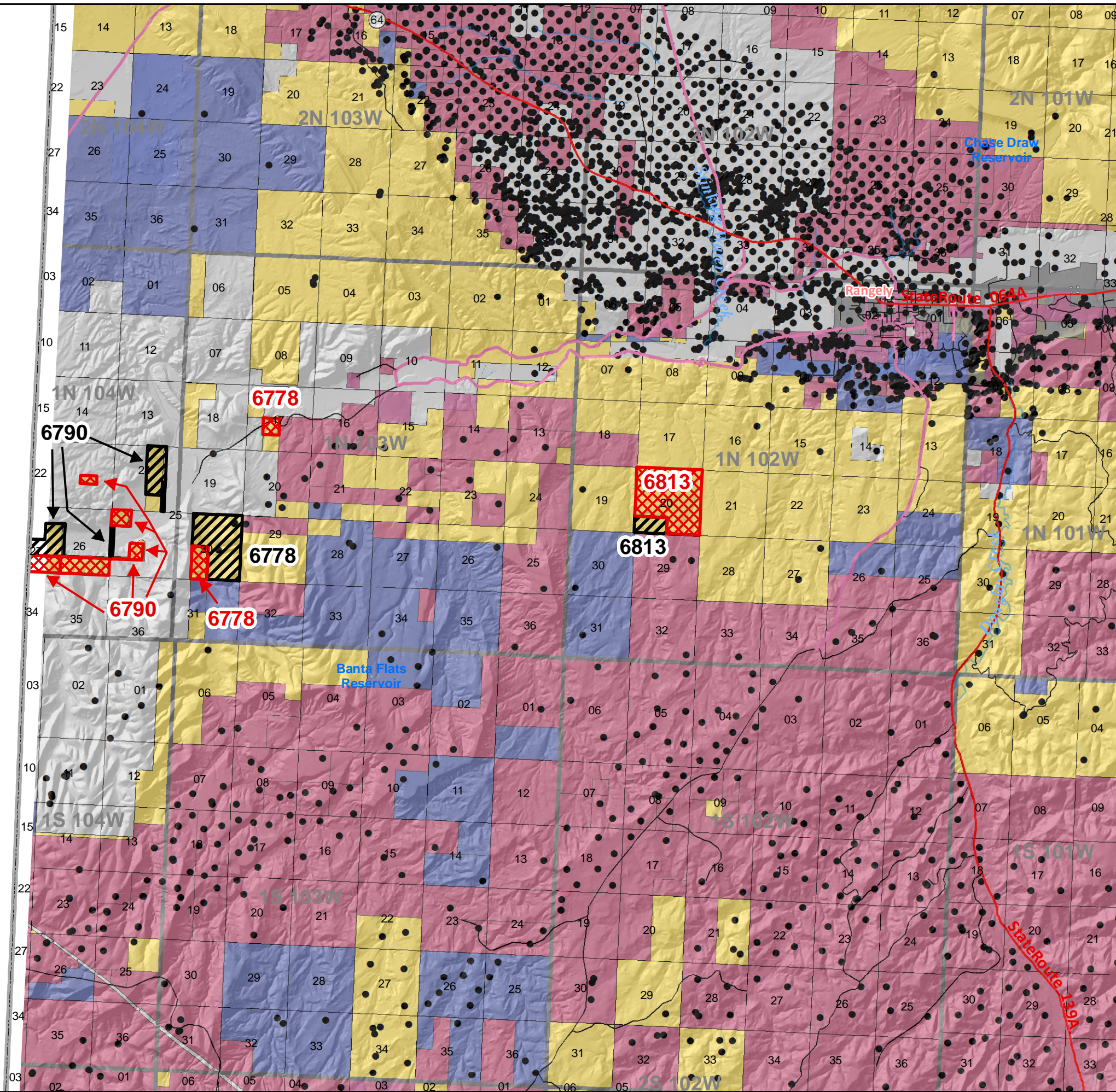
**BLM Oil & Gas Lease Sale
June 12, 2014**

Colorado BLM Field Office

WHITE RIVER FIELD OFFICE

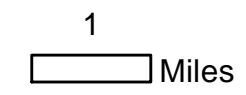


NOTE TO MAP USERS
No warrantee is made by the Bureau of Land Management as to the accuracy, reliability, or completeness of the data layers shown on this map. The official land records should be checked for the current status on any specific tract of land.



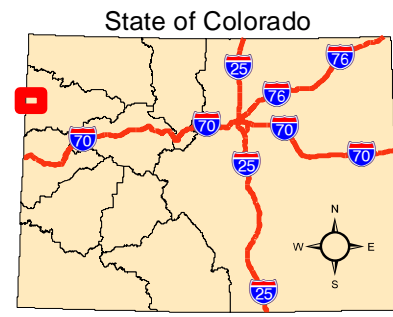
Legend

- BLM Field Office Areas
- Recommended Oil & Gas Sale Status**
- Deferral
- Sale
- Oil and Gas Leases**
- Non-Producing Leases
- Producing Leases
- COGCC Oil and Gas Well Locations
- Bureau of Land Management
- Private
- State
- Township & Range
- Sections
- Minor Highways
- Lakes and Reservoirs
- Streams
- USGS Cities and Towns



Page Number 6

Map Page Location



**BLM Oil & Gas Lease Sale
June 12, 2014**

Colorado BLM Field Office

WHITE RIVER FIELD OFFICE



NOTE TO MAP USERS
No warranty is made by the Bureau of Land Management as to the accuracy, reliability, or completeness of the data layers shown on this map. The official land records should be checked for the current status on any specific tract of land.

Legend

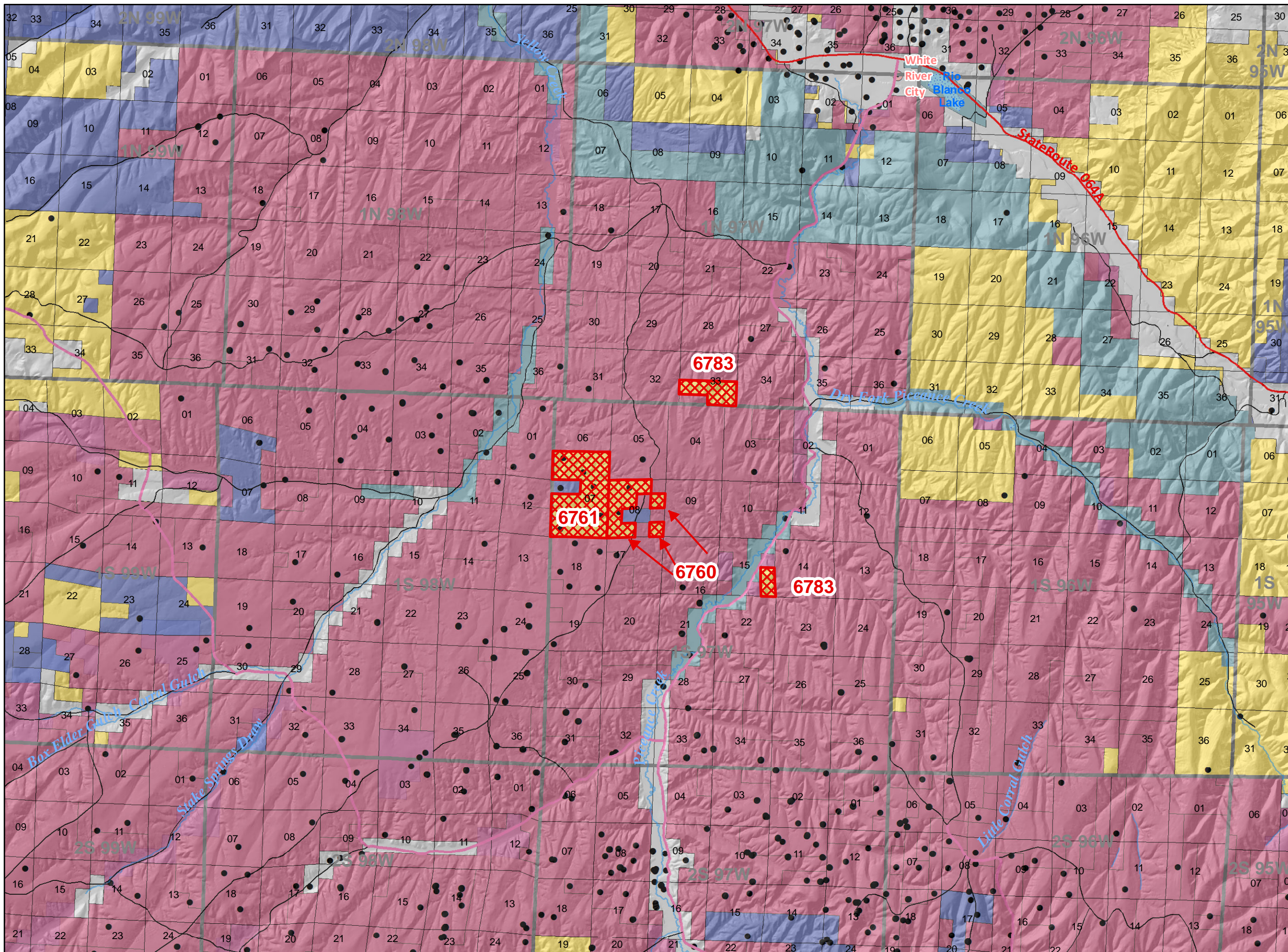
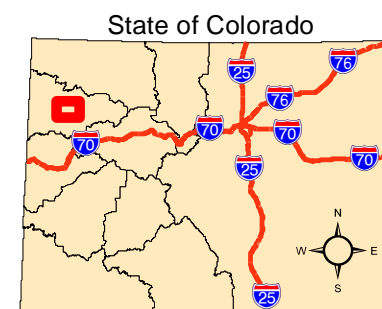
- BLM Field Office Areas
- Recommended Oil & Gas Sale Status**
- Sale
- Oil and Gas Leases**
- Non-Producing Leases
- Producing Leases
- COGCC Oil and Gas Well Locations
- Bureau of Land Management
- Private
- State, County, City; Areas
- Township & Range
- Sections
- Minor Highways
- Lakes and Reservoirs
- Streams
- USGS Cities and Towns

1

Miles

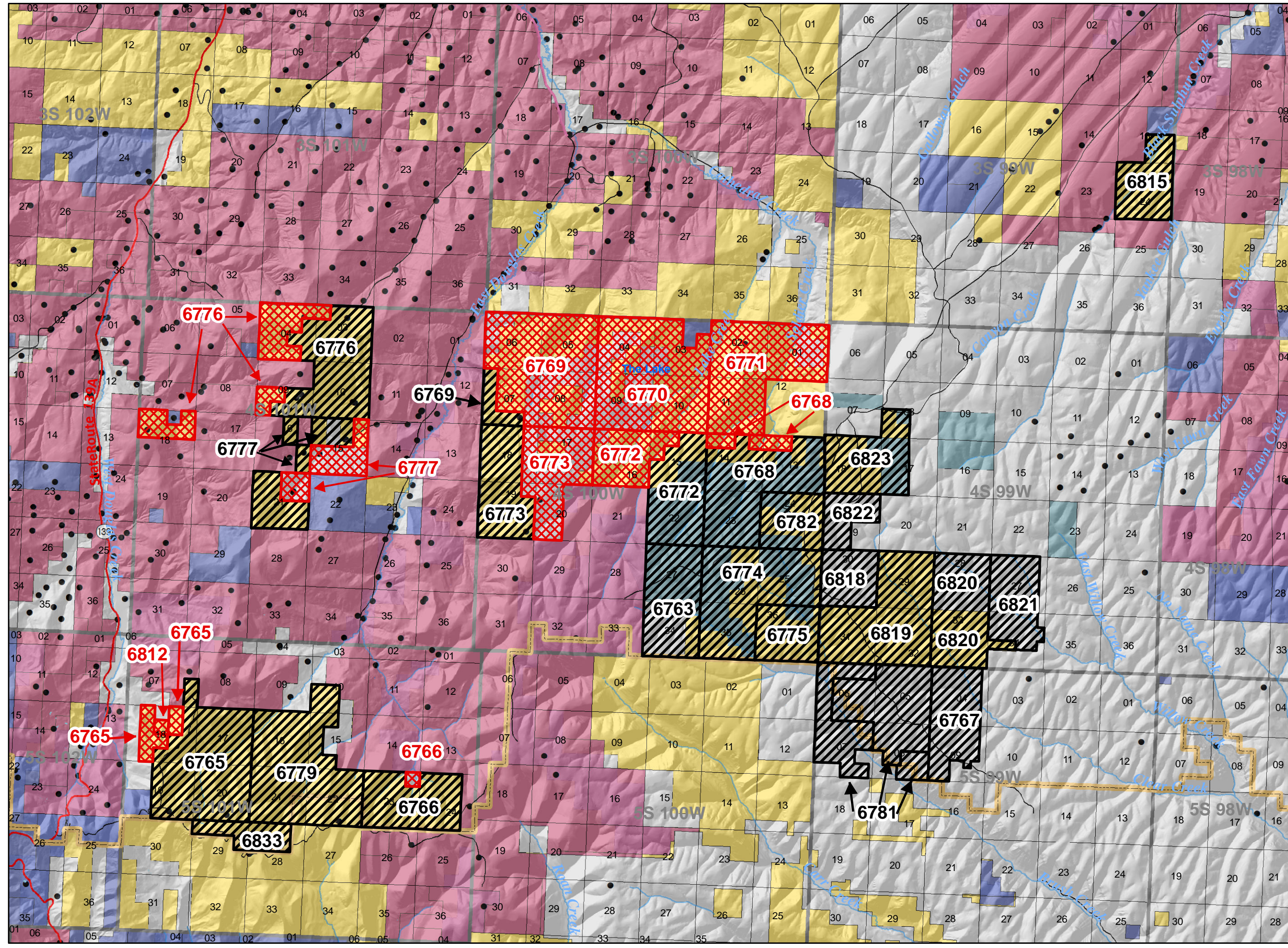
Page Number 7

Map Page Location



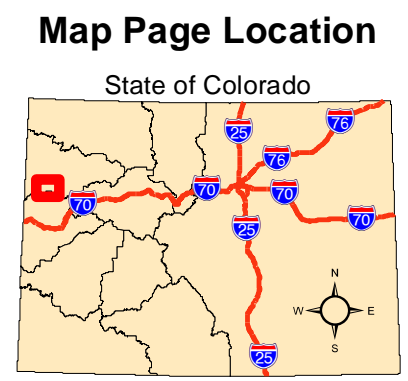
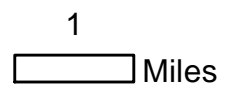


NOTE TO MAP USERS
No warranty is made by the Bureau of Land Management as to the accuracy, reliability, or completeness of the data layers shown on this map. The official land records should be checked for the current status on any specific tract of land.



Legend

- BLM Field Office Areas
- Recommended Oil & Gas Sale Status**
- Deferral
- Sale
- Oil and Gas Leases**
- Non-Producing Leases
- Producing Leases
- COGCC Oil and Gas Well Locations
- Bureau of Land Management
- Private
- State, County, City; Areas
- Township & Range
- Sections
- Minor Highways
- Lakes and Reservoirs
- Streams



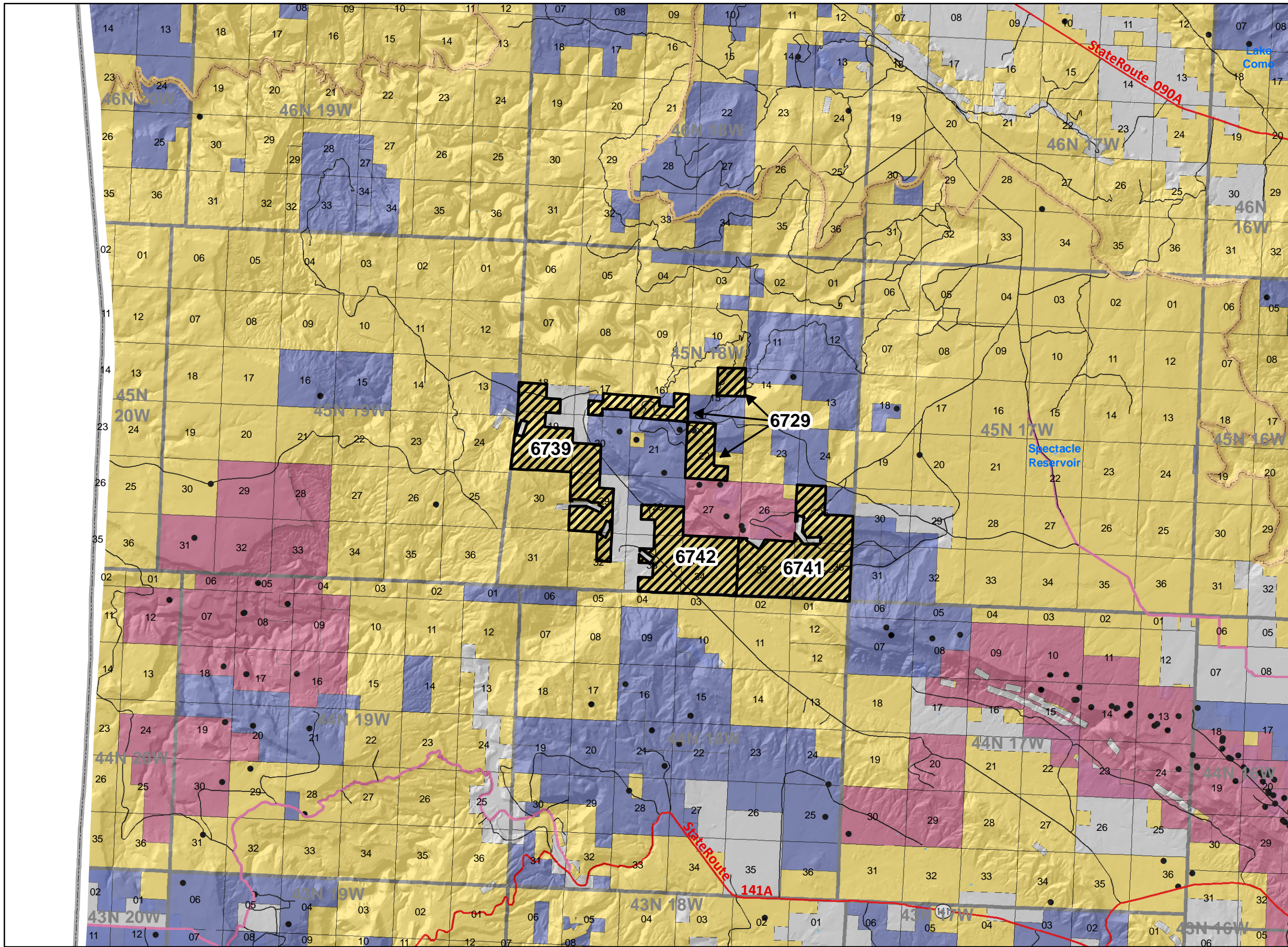
**BLM Oil & Gas Lease Sale
June 12, 2014**

Colorado BLM Field Office

TRES RIOS FIELD OFFICE

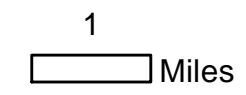


NOTE TO MAP USERS
No warranty is made by the Bureau of Land Management as to the accuracy, reliability, or completeness of the data layers shown on this map. The official land records should be checked for the current status on any specific tract of land.

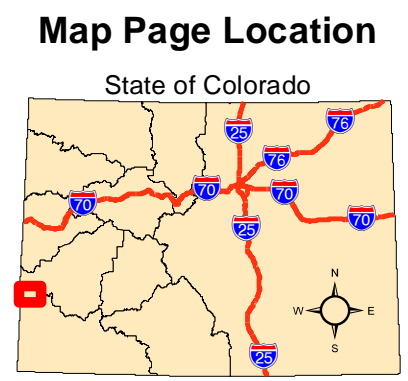


Legend

- BLM Field Office Areas
- Recommended Oil & Gas Sale Status**
- Deferral
- Oil and Gas Leases**
- Non-Producing Leases
- Producing Leases
- COGCC Oil and Gas Well Locations
- Bureau of Land Management
- Private
- Township & Range
- Sections
- Minor Highways
- Lakes and Reservoirs
- Streams

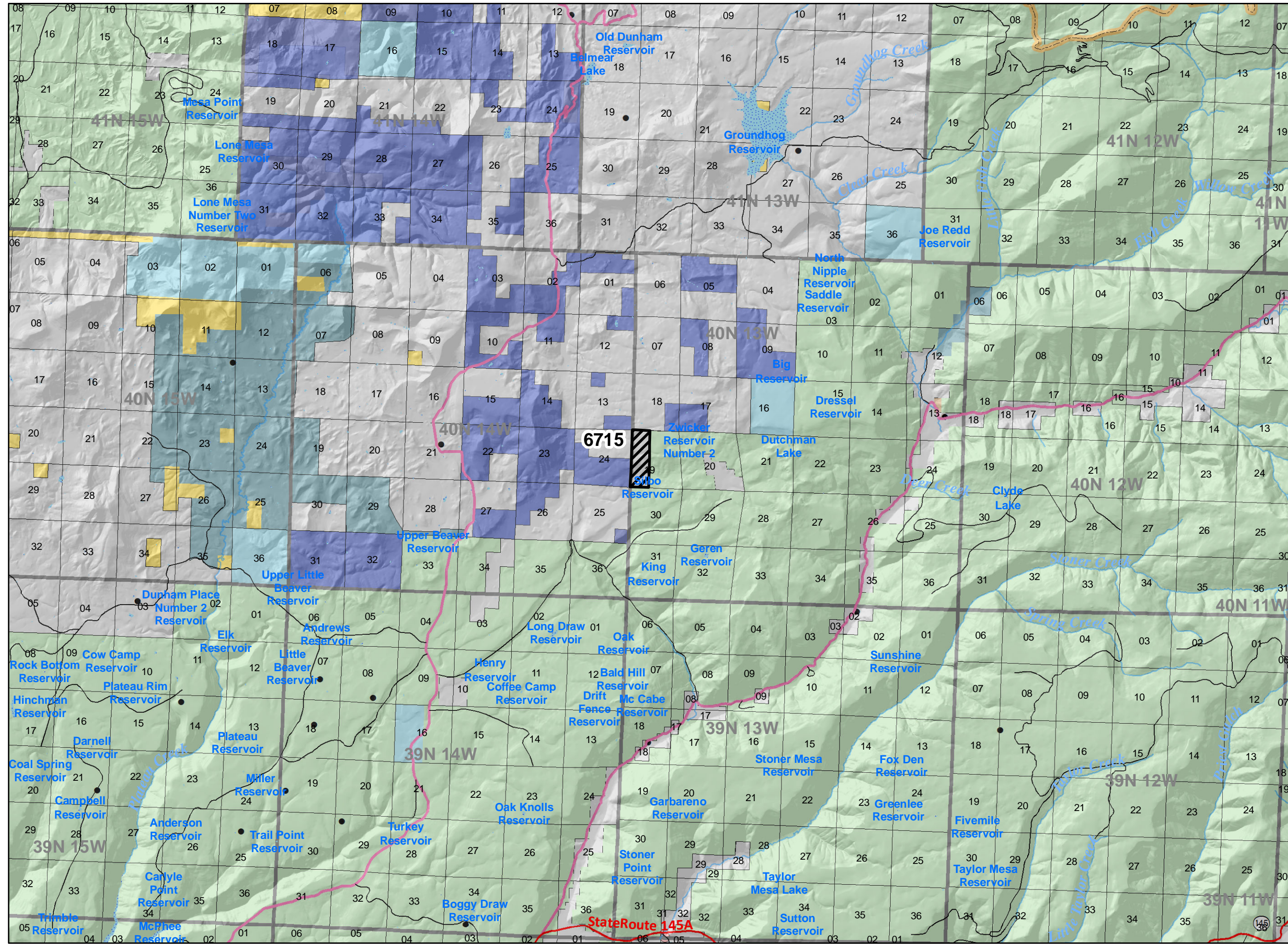


Page Number 9



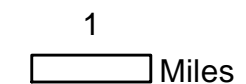


NOTE TO MAP USERS
No warrantee is made by the Bureau of Land Management as to the accuracy, reliability, or completeness of the data layers shown on this map. The official land records should be checked for the current status on any specific tract of land.



Legend

- BLM Field Office Areas
- Recommended Oil & Gas Sale Status**
- Deferral
- Oil and Gas Leases**
- Non-Producing Leases
- COGCC Oil and Gas Well Locations
- Bureau of Land Management
- Other Federal
- Private
- State
- State, County, City; Areas
- US Forest Service
- Township & Range
- Sections
- Minor Highways
- Lakes and Reservoirs
- Streams
- USGS Cities and Towns



Page Number 10

Map Page Location

