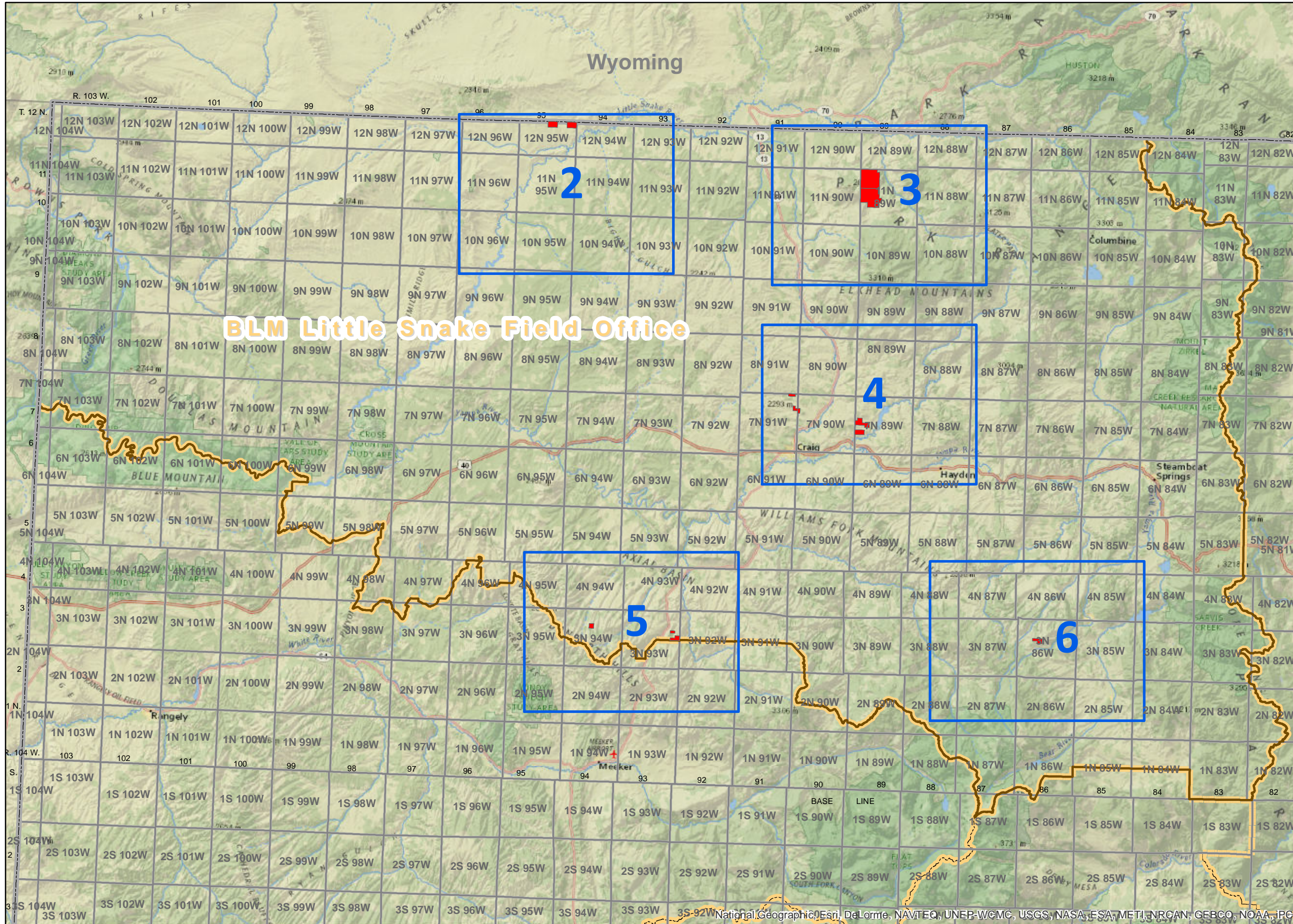


BLM Oil & Gas Quarterly Lease Sale February 2014



Legend

- Parcels Recommended for Leasing
- Detailed Map View Pages
- State Boundary
- Township & Range
- BLM Field Office Boundaries

Little Snake Field Office
 455 Emerson Street
 Craig, Colorado 81625
 970- 826-5000
 FAX 970- 826-5002
 Field Manager: Wendy Reynolds

Please click
on the Close Up
Map Pages to see
more detail.

2

Window Help

⬆️
⬆️
⬆️
⬆️

Click on the Home
Tool to return to this
Index map on Page 1.

Little Snake



NOTE TO MAP USERS
No warrantee is made by the Bureau of Land Management as to the accuracy, reliability, or completeness of the data layers shown on this map. The official land records should be checked for the current status on any specific tract of land.

Legend

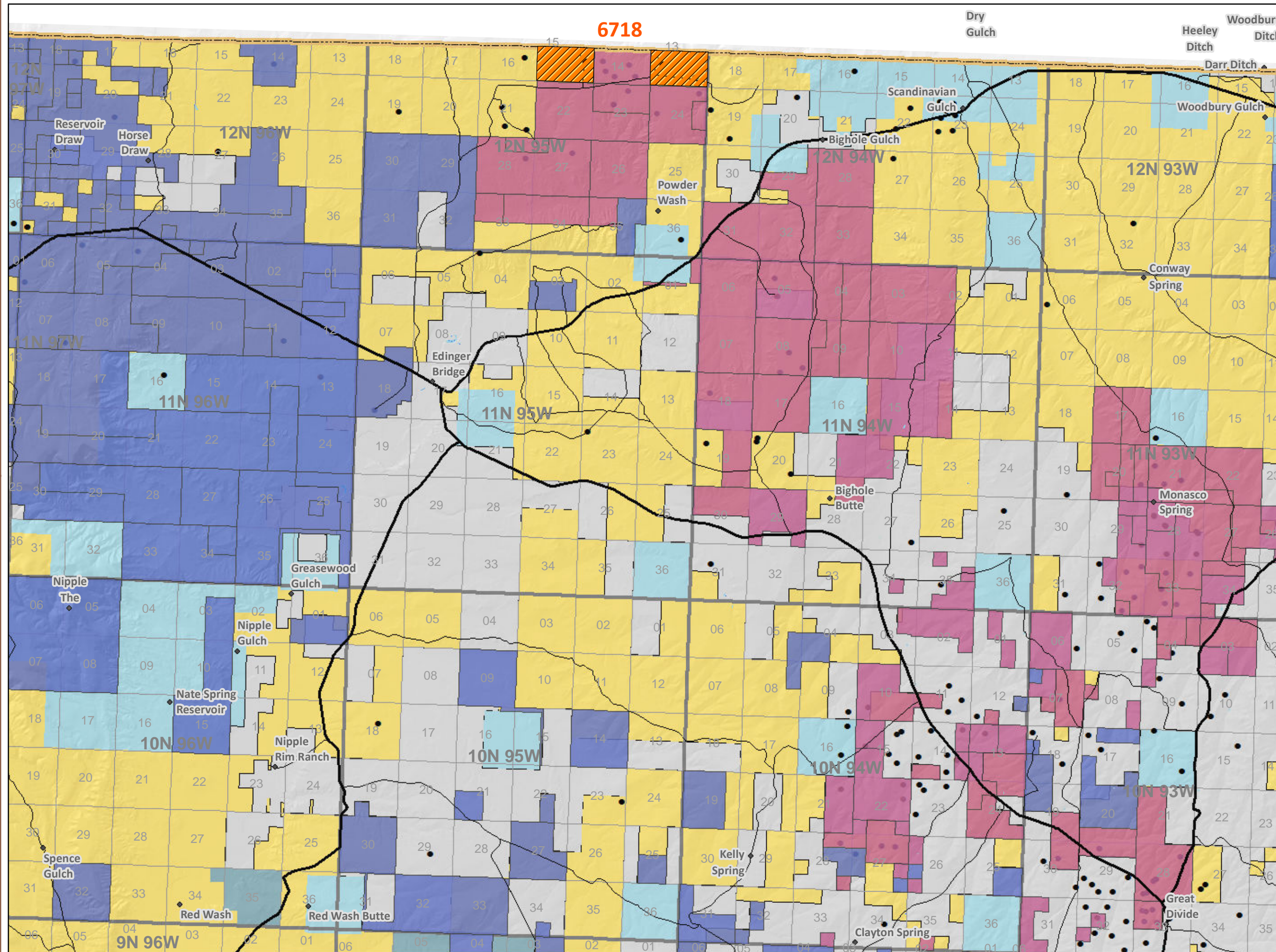
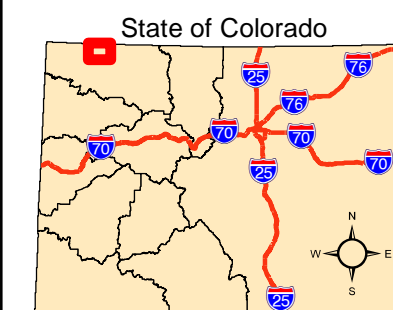
- Recommended for Lease
- Oil and Gas Leases**
 - Non-Producing Leases
 - Producing Leases
- COGCC Oil and Gas Well Locations
- Bureau of Land Management
- Private
- State
- State, County, City, Areas
- Township & Range
- Sections
- Major Highways
- Minor Highways
- Lakes and Reservoirs
- Streams
- USGS Cities and Towns

2

Miles

Page Number 2

Map Page Location



**BLM Oil & Gas Lease Sale
February 13, 2014
Colorado BLM Field Office
Little Snake**

Little Snake



NOTE TO MAP USERS
No warrantee is made by the Bureau of Land Management as to the accuracy, reliability, or completeness of the data layers shown on this map. The official land records should be checked for the current status on any specific tract of land.

Legend

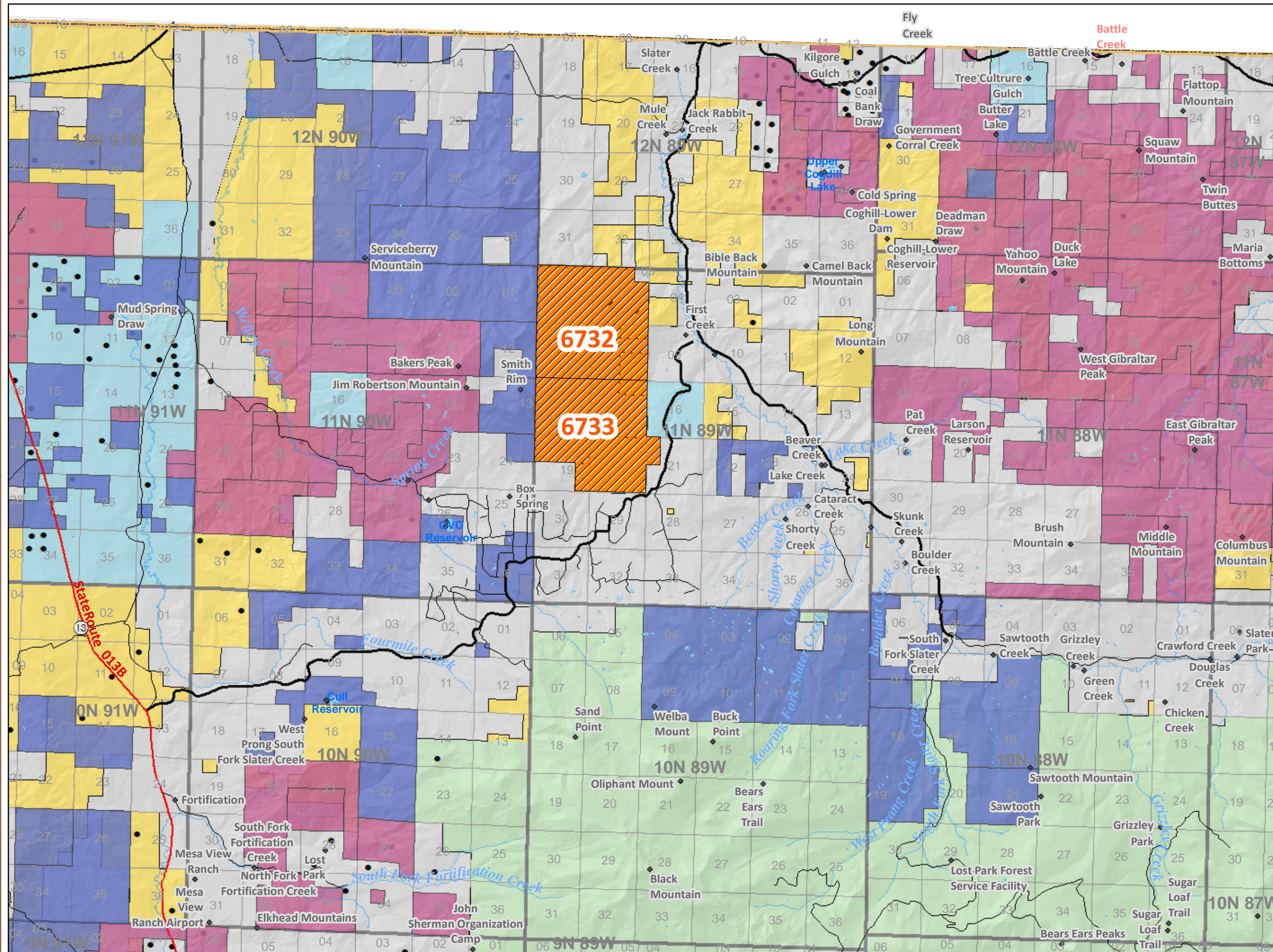
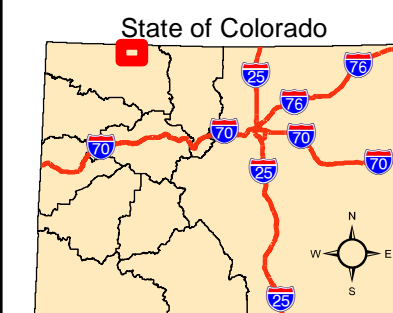
- Recommended for Lease
- Oil and Gas Leases**
 - Non-Producing Leases
 - Producing Leases
- COGCC Oil and Gas Well Locations
- Bureau of Land Management
- Private
- State
- US Forest Service
- Township & Range
- Sections
- Major Highways
- Minor Highways
- Lakes and Reservoirs
- Streams
- USGS Cities and Towns

2

Miles

Page Number 3

Map Page Location



BLM Oil & Gas Lease Sale
February 13, 2014
Colorado BLM Field Office
Little Snake



NOTE TO MAP USERS
 No warrantee is made by the Bureau of Land Management as to the accuracy, reliability, or completeness of the data layers shown on this map. The official land records should be checked for the current status on any specific tract of land.

Legend

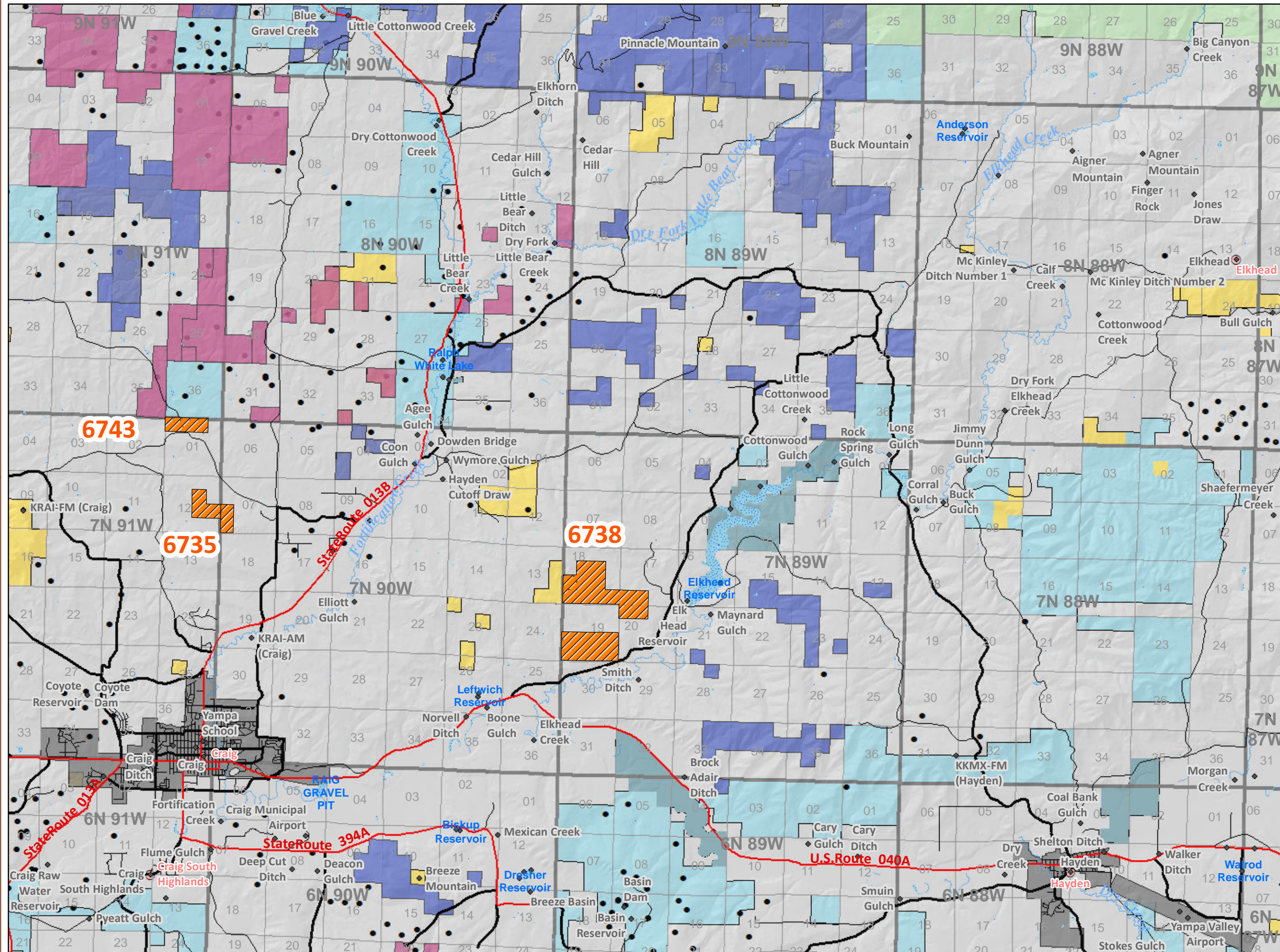
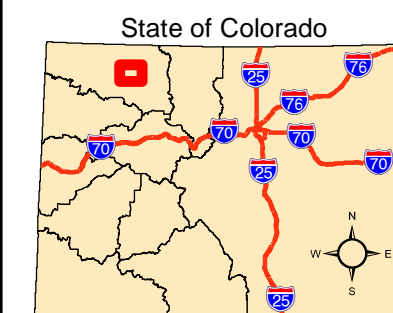
- Recommended for Lease
- Oil and Gas Leases**
- Non-Producing Leases
- Producing Leases
- COGCC Oil and Gas Well Locations
- Bureau of Land Management
- Private
- State
- State, County, City, Areas
- US Forest Service
- Township & Range
- Sections
- Major Highways
- Minor Highways
- Lakes and Reservoirs
- Streams
- USGS Cities and Towns

2

Miles

Page Number 4

Map Page Location



6743

6735

6738

**BLM Oil & Gas Lease Sale
February 13, 2014
Colorado BLM Field Office
Little Snake**

Little Snake



NOTE TO MAP USERS
No warrantee is made by the Bureau of Land Management as to the accuracy, reliability, or completeness of the data layers shown on this map. The official land records should be checked for the current status on any specific tract of land.

Legend

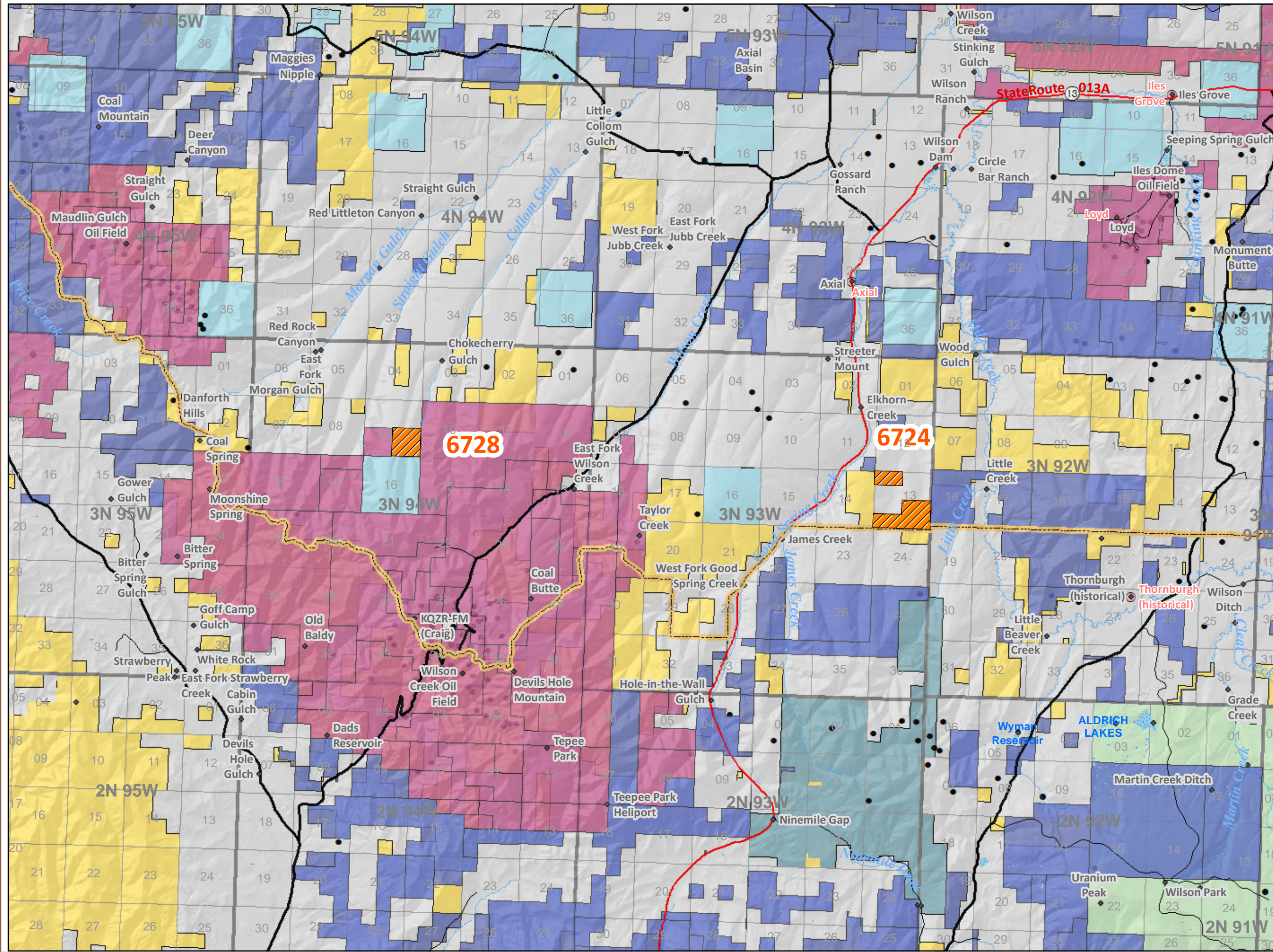
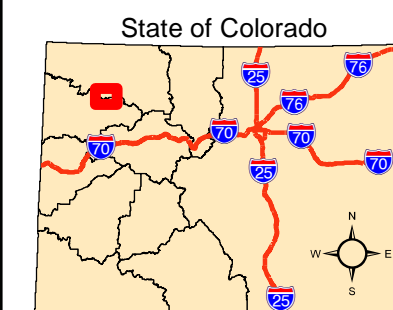
- Recommended for Lease
- Oil and Gas Leases**
 - Non-Producing Leases
 - Producing Leases
- COGCC Oil and Gas Well Locations
- Bureau of Land Management
- Private
- State
- State, County, City, Areas
- US Forest Service
- Township & Range
- Sections
- Major Highways
- Minor Highways
- Lakes and Reservoirs
- Streams
- USGS Cities and Towns

2

Miles

Page Number 5

Map Page Location



BLM Oil & Gas Lease Sale
February 13, 2014
Colorado BLM Field Office
Little Snake



NOTE TO MAP USERS
 No warrantee is made by the Bureau of Land Management as to the accuracy, reliability, or completeness of the data layers shown on this map. The official land records should be checked for the current status on any specific tract of land.

Legend

- Recommended for Lease
- Oil and Gas Leases**
- Non-Producing Leases
- Producing Leases
- COGCC Oil and Gas Well Locations
- Bureau of Land Management
- Private
- State
- State, County, City, Areas
- US Forest Service
- Township & Range
- Sections
- Major Highways
- Minor Highways
- Lakes and Reservoirs
- Streams
- USGS Cities and Towns

2

Miles

Page Number 6

Map Page Location

