

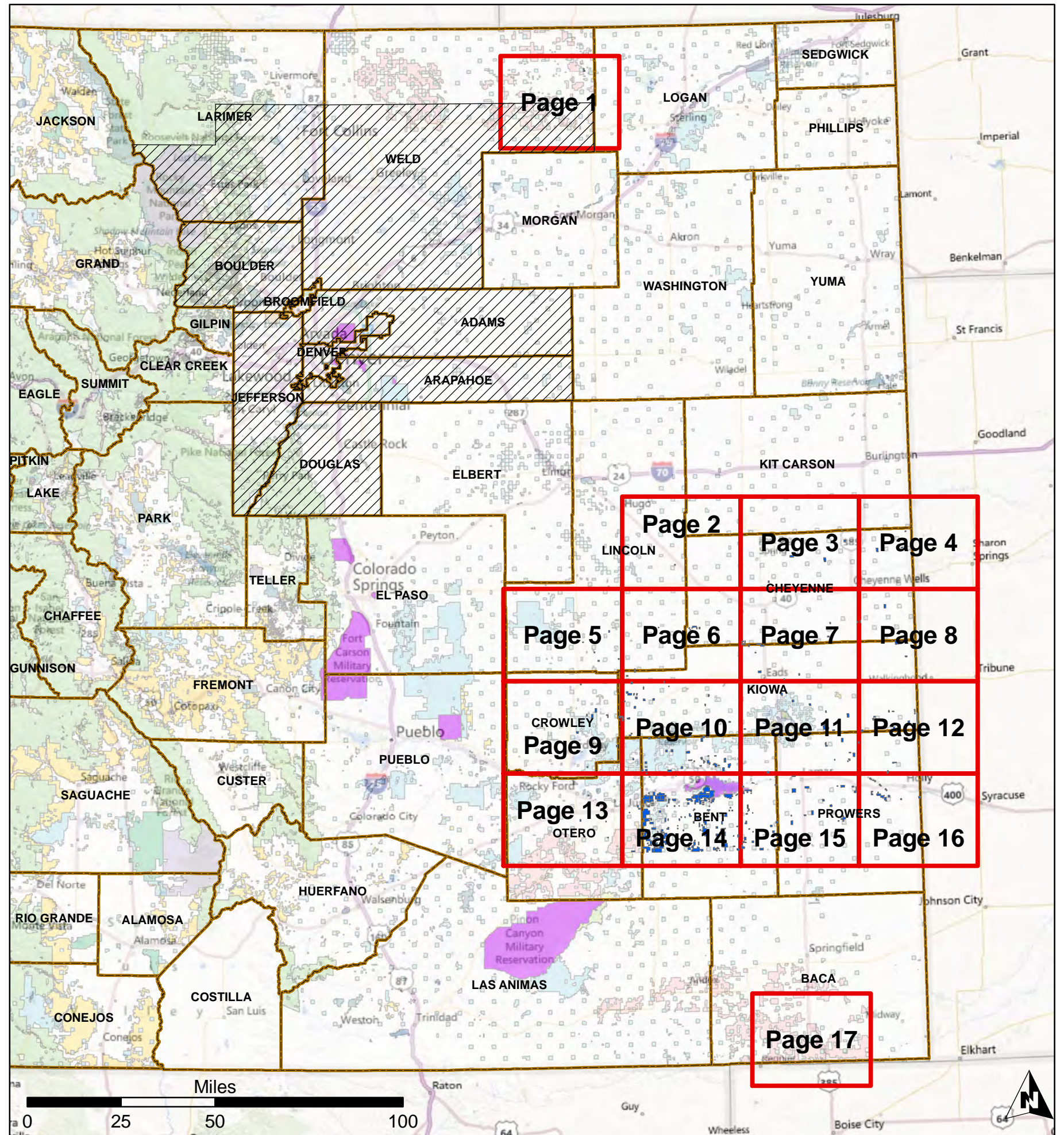


February 2013 Oil and Gas Lease Parcels

DOI-BLM-CO-200-2012-0060 EA_O&G

Legend

- Bureau of Land Management
- Bureau of Reclamation
- Indian Reservation
- Military Reservation
- National Grasslands
- National Park Service
- Other Federal
- Private
- State
- State, County, City; Areas
- Bankhead-Jones Land Use Lands
- US Fish and Wildlife Service
- US Forest Service
- Map Book Pages
- Available Parcels
- Ozone NonAttainment
- County Boundaries

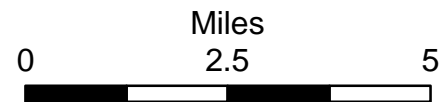




**February 2013
Oil and Gas Lease Sale**
DOI-BLM-CO-200-2012-0060 EA O&G

Legend

- Available Parcels
- Ozone Non-Attainment
- County Boundaries
- Bureau of Land Management
- Bureau of Reclamation
- Indian Reservation
- Military Reservation
- National Grasslands
- National Park Service
- Other Federal
- Private
- State
- State, County, City; Areas
- Bankhead-Jones Land Use Lands
- US Fish and Wildlife Service
- US Forest Service



NO WARRANTY IS MADE BY THE BUREAU OF LAND MANAGEMENT AS TO THE ACCURACY, RELIABILITY, OR COMPLETENESS OF THESE DATA FOR INDIVIDUAL USE OR AGGREGATION USE WITH OTHER DATA.



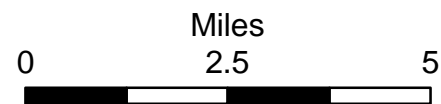


February 2013 Oil and Gas Lease Sale

DOI-BLM-CO-200-2012-0060 EA O&G

Legend

- Available Parcels
- Ozone Non-Attainment
- County Boundaries
- Bureau of Land Management
- Bureau of Reclamation
- Indian Reservation
- Military Reservation
- National Grasslands
- National Park Service
- Other Federal
- Private
- State
- State, County, City; Areas
- Bankhead-Jones Land Use Lands
- US Fish and Wildlife Service
- US Forest Service



NO WARRANTY IS MADE BY THE BUREAU OF LAND MANAGEMENT AS TO THE ACCURACY, RELIABILITY, OR COMPLETENESS OF THESE DATA FOR INDIVIDUAL USE OR AGGREGATION USE WITH OTHER DATA.



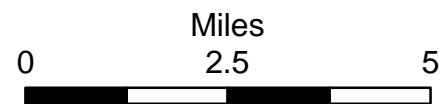
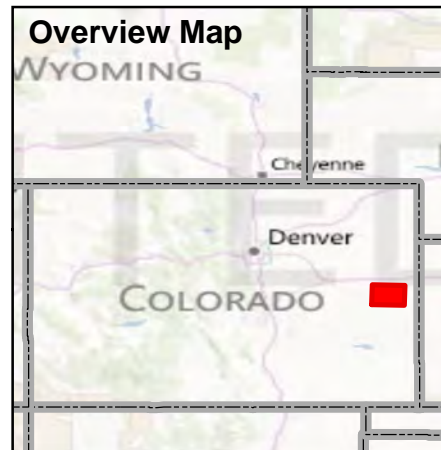


February 2013 Oil and Gas Lease Sale

DOI-BLM-CO-200-2012-0060 EA O&G

Legend

- Available Parcels
- Ozone Non-Attainment
- County Boundaries
- Bureau of Land Management
- Bureau of Reclamation
- Indian Reservation
- Military Reservation
- National Grasslands
- National Park Service
- Other Federal
- Private
- State
- State, County, City; Areas
- Bankhead-Jones Land Use Lands
- US Fish and Wildlife Service
- US Forest Service



NO WARRANTY IS MADE BY THE BUREAU OF LAND MANAGEMENT AS TO THE ACCURACY, RELIABILITY, OR COMPLETENESS OF THESE DATA FOR INDIVIDUAL USE OR AGGREGATION USE WITH OTHER DATA.

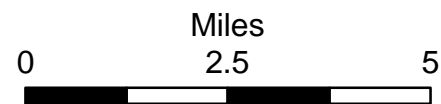




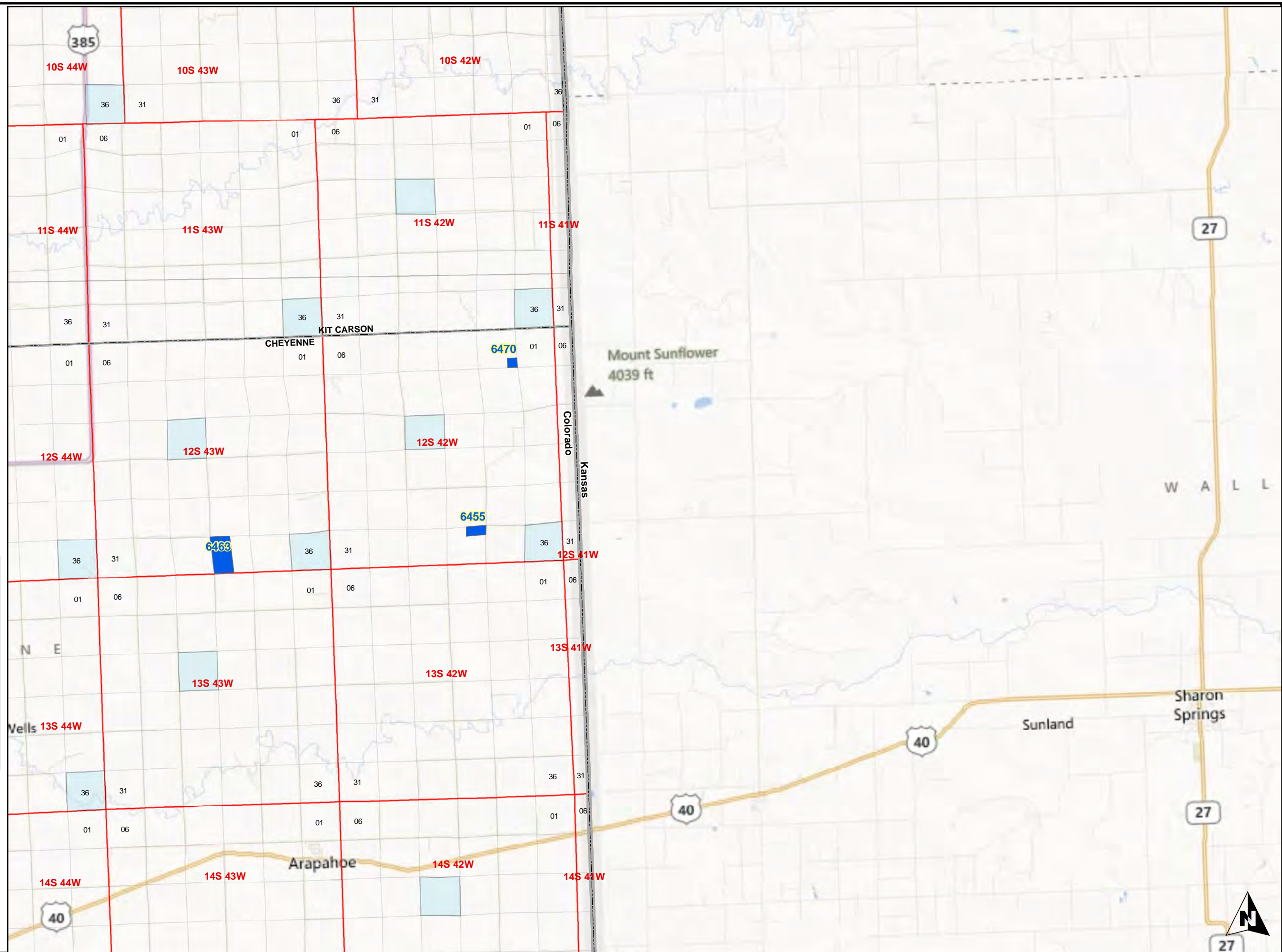
**February 2013
Oil and Gas Lease Sale**
DOI-BLM-CO-200-2012-0060 EA O&G

Legend

- Available Parcels
- Ozone Non-Attainment
- County Boundaries
- Bureau of Land Management
- Bureau of Reclamation
- Indian Reservation
- Military Reservation
- National Grasslands
- National Park Service
- Other Federal
- Private
- State
- State, County, City; Areas
- Bankhead-Jones Land Use Lands
- US Fish and Wildlife Service
- US Forest Service



NO WARRANTY IS MADE BY THE BUREAU OF LAND MANAGEMENT AS TO THE ACCURACY, RELIABILITY, OR COMPLETENESS OF THESE DATA FOR INDIVIDUAL USE OR AGGREGATION USE WITH OTHER DATA.



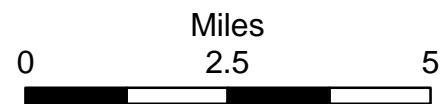
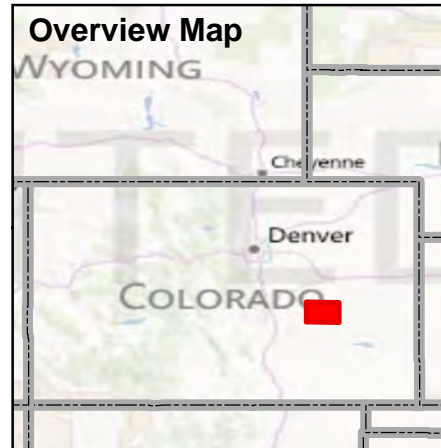


February 2013 Oil and Gas Lease Sale

DOI-BLM-CO-200-2012-0060 EA O&G

Legend

- Available Parcels
- Ozone Non-Attainment
- County Boundaries
- Bureau of Land Management
- Bureau of Reclamation
- Indian Reservation
- Military Reservation
- National Grasslands
- National Park Service
- Other Federal
- Private
- State
- State, County, City; Areas
- Bankhead-Jones Land Use Lands
- US Fish and Wildlife Service
- US Forest Service



NO WARRANTY IS MADE BY THE BUREAU OF LAND MANAGEMENT AS TO THE ACCURACY, RELIABILITY, OR COMPLETENESS OF THESE DATA FOR INDIVIDUAL USE OR AGGREGATION USE WITH OTHER DATA.



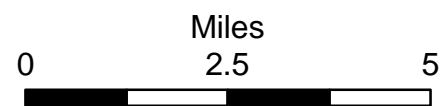


February 2013 Oil and Gas Lease Sale

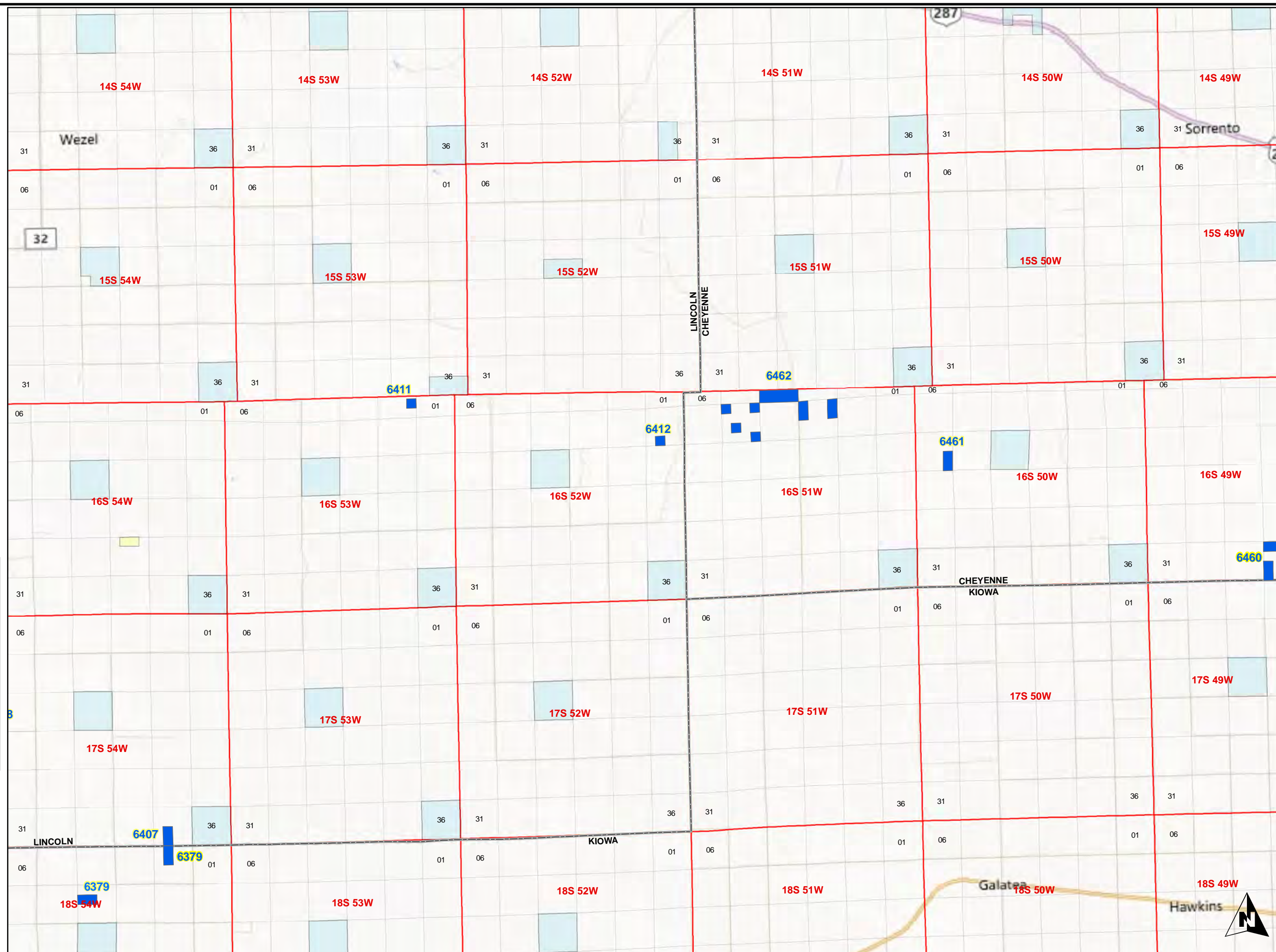
DOI-BLM-CO-200-2012-0060 EA O&G

Legend

- Available Parcels
- Ozone Non-Attainment
- County Boundaries
- Bureau of Land Management
- Bureau of Reclamation
- Indian Reservation
- Military Reservation
- National Grasslands
- National Park Service
- Other Federal
- Private
- State
- State, County, City; Areas
- Bankhead-Jones Land Use Lands
- US Fish and Wildlife Service
- US Forest Service



NO WARRANTY IS MADE BY THE BUREAU OF LAND MANAGEMENT AS TO THE ACCURACY, RELIABILITY, OR COMPLETENESS OF THESE DATA FOR INDIVIDUAL USE OR AGGREGATION USE WITH OTHER DATA.





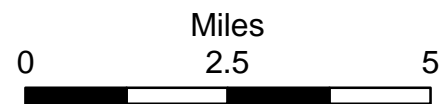
February 2013 Oil and Gas Lease Sale

DOI-BLM-CO-200-2012-0060 EA O&G

Legend

- Available Parcels
- Ozone Non-Attainment
- County Boundaries
- Bureau of Land Management
- Bureau of Reclamation
- Indian Reservation
- Military Reservation
- National Grasslands
- National Park Service
- Other Federal
- Private
- State
- State, County, City; Areas
- Bankhead-Jones Land Use Lands
- US Fish and Wildlife Service
- US Forest Service

Overview Map



NO WARRANTY IS MADE BY THE BUREAU OF LAND MANAGEMENT AS TO THE ACCURACY, RELIABILITY, OR COMPLETENESS OF THESE DATA FOR INDIVIDUAL USE OR AGGREGATION USE WITH OTHER DATA.



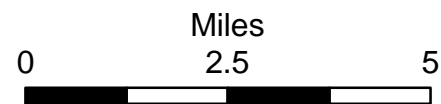
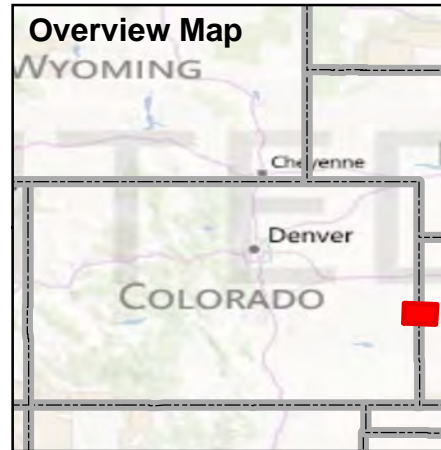


February 2013 Oil and Gas Lease Sale

DOI-BLM-CO-200-2012-0060 EA O&G

Legend

- Available Parcels
- Ozone Non-Attainment
- County Boundaries
- Bureau of Land Management
- Bureau of Reclamation
- Indian Reservation
- Military Reservation
- National Grasslands
- National Park Service
- Other Federal
- Private
- State
- State, County, City; Areas
- Bankhead-Jones Land Use Lands
- US Fish and Wildlife Service
- US Forest Service



NO WARRANTY IS MADE BY THE BUREAU OF LAND MANAGEMENT AS TO THE ACCURACY, RELIABILITY, OR COMPLETENESS OF THESE DATA FOR INDIVIDUAL USE OR AGGREGATION USE WITH OTHER DATA.



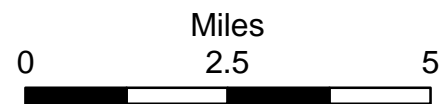
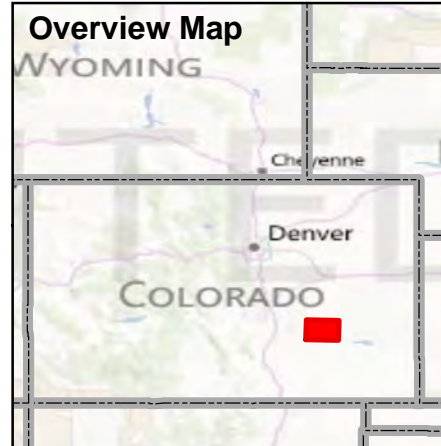


February 2013 Oil and Gas Lease Sale

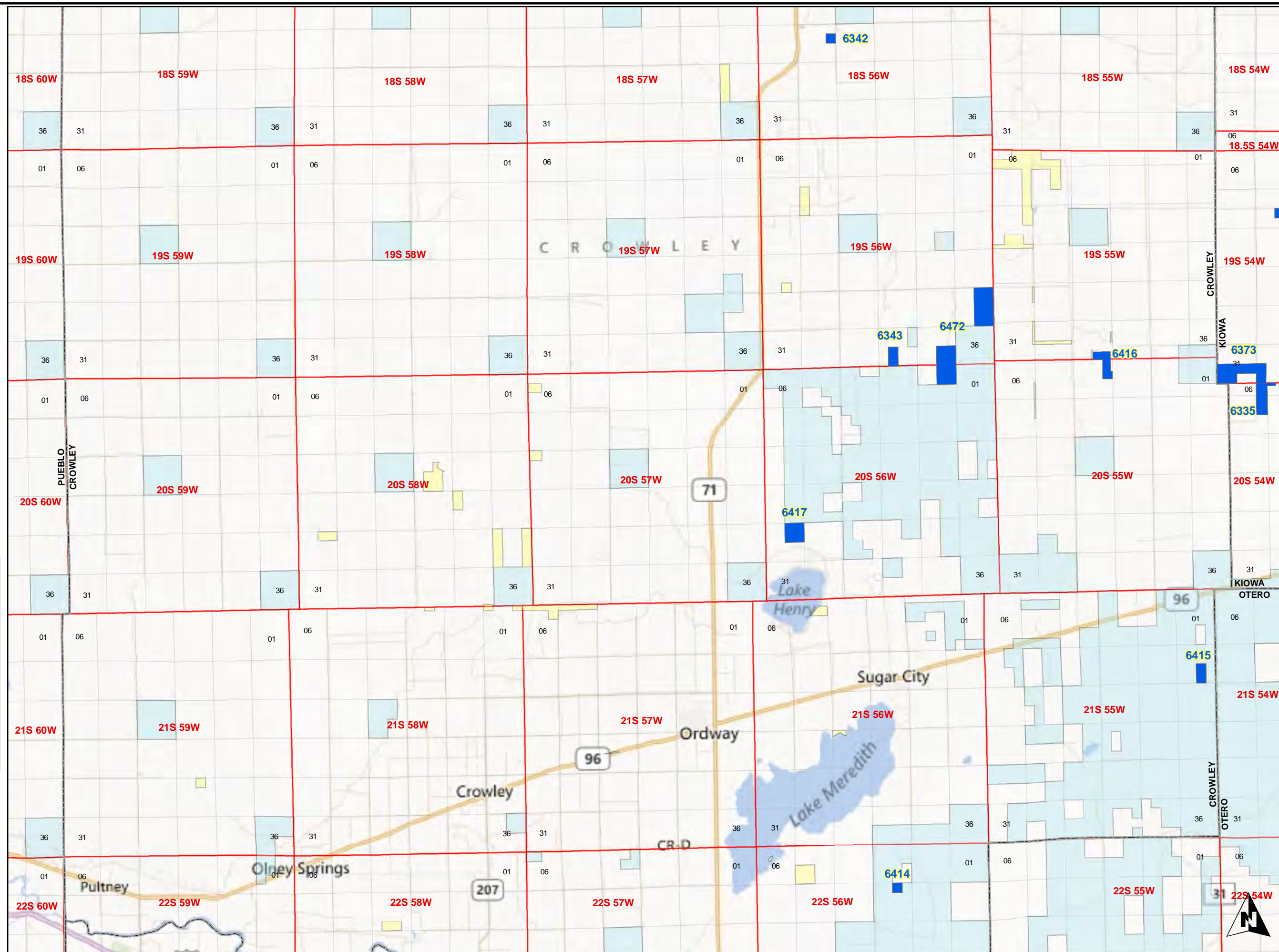
DOI-BLM-CO-200-2012-0060 EA O&G

Legend

- Available Parcels
- Ozone Non-Attainment
- County Boundaries
- Bureau of Land Management
- Bureau of Reclamation
- Indian Reservation
- Military Reservation
- National Grasslands
- National Park Service
- Other Federal
- Private
- State
- State, County, City; Areas
- Bankhead-Jones Land Use Lands
- US Fish and Wildlife Service
- US Forest Service



NO WARRANTY IS MADE BY THE BUREAU OF LAND MANAGEMENT AS TO THE ACCURACY, RELIABILITY, OR COMPLETENESS OF THESE DATA FOR INDIVIDUAL USE OR AGGREGATION USE WITH OTHER DATA.



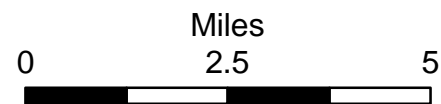
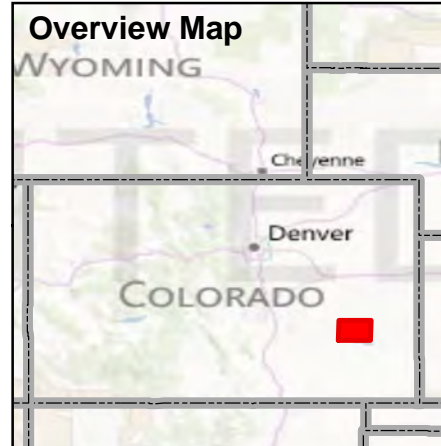


February 2013 Oil and Gas Lease Sale

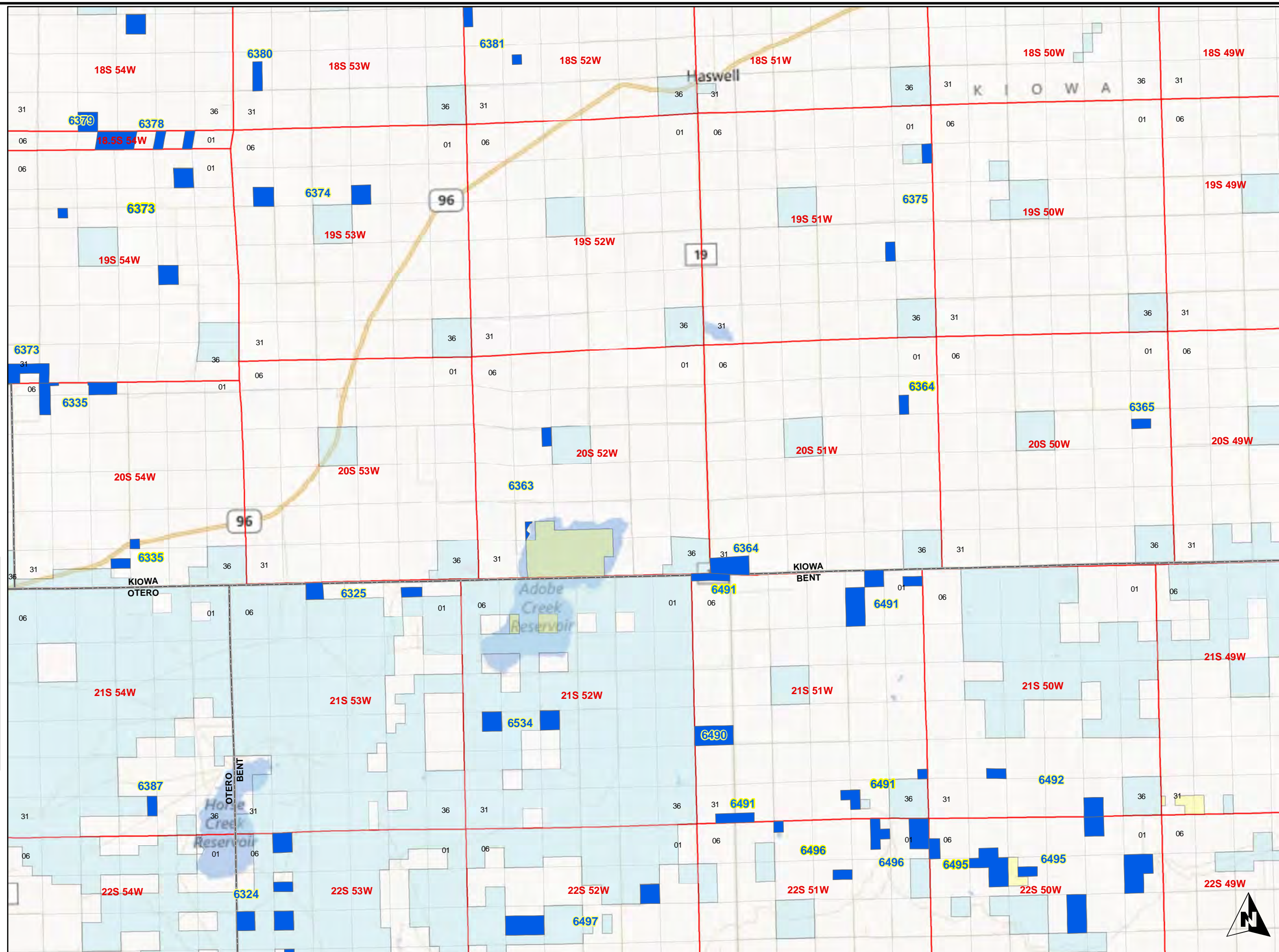
DOI-BLM-CO-200-2012-0060 EA O&G

Legend

- Available Parcels
- Ozone Non-Attainment
- County Boundaries
- Bureau of Land Management
- Bureau of Reclamation
- Indian Reservation
- Military Reservation
- National Grasslands
- National Park Service
- Other Federal
- Private
- State
- State, County, City; Areas
- Bankhead-Jones Land Use Lands
- US Fish and Wildlife Service
- US Forest Service



NO WARRANTY IS MADE BY THE BUREAU OF LAND MANAGEMENT AS TO THE ACCURACY, RELIABILITY, OR COMPLETENESS OF THESE DATA FOR INDIVIDUAL USE OR AGGREGATION USE WITH OTHER DATA.



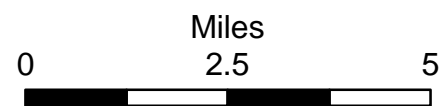
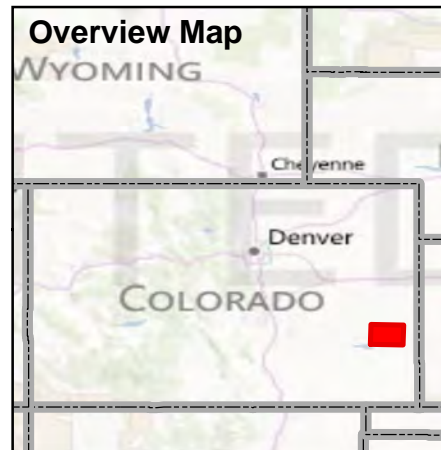


February 2013 Oil and Gas Lease Sale

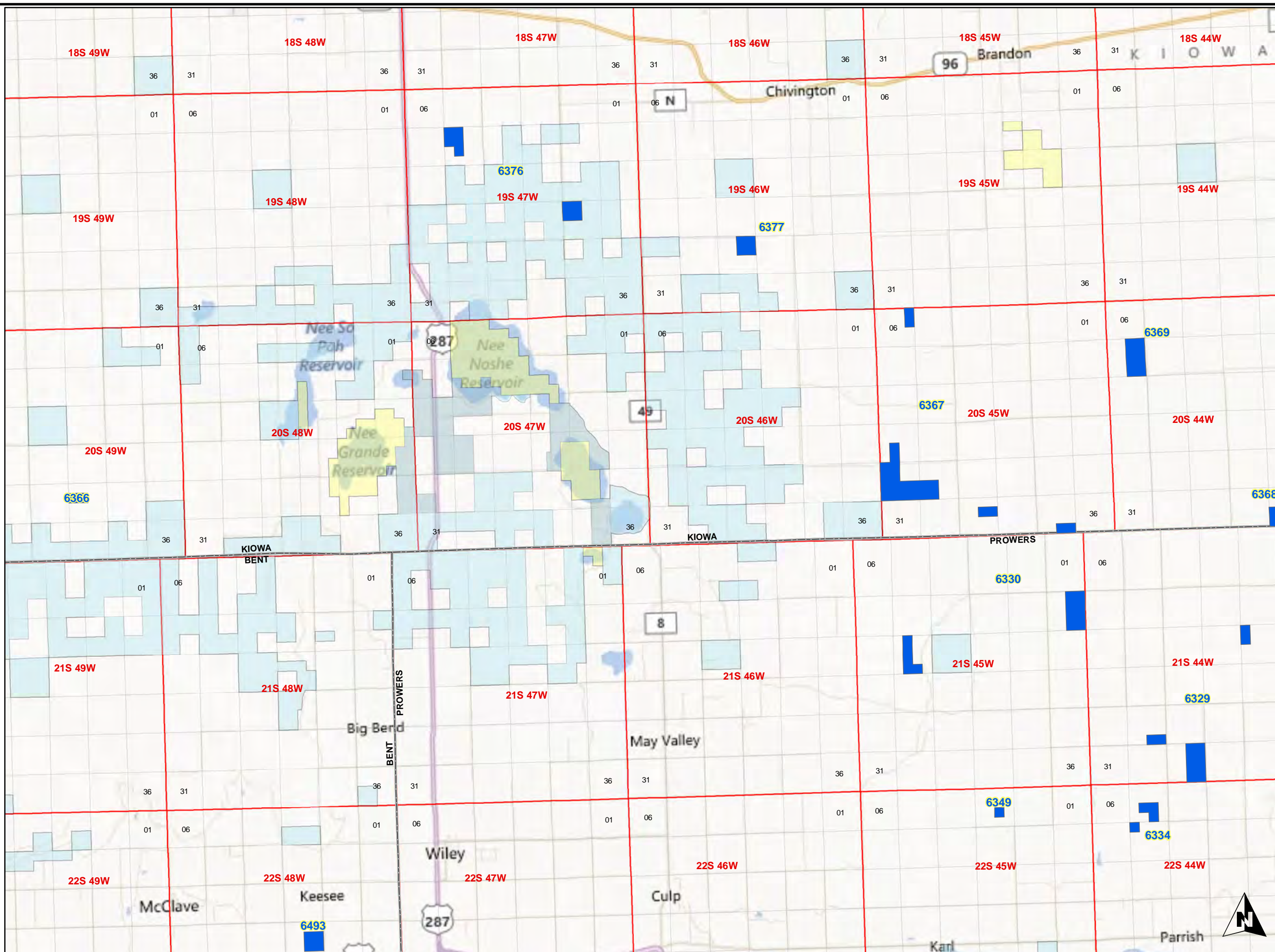
DOI-BLM-CO-200-2012-0060 EA O&G

Legend

- Available Parcels
- Ozone Non-Attainment
- County Boundaries
- Bureau of Land Management
- Bureau of Reclamation
- Indian Reservation
- Military Reservation
- National Grasslands
- National Park Service
- Other Federal
- Private
- State
- State, County, City; Areas
- Bankhead-Jones Land Use Lands
- US Fish and Wildlife Service
- US Forest Service



NO WARRANTY IS MADE BY THE BUREAU OF LAND MANAGEMENT AS TO THE ACCURACY, RELIABILITY, OR COMPLETENESS OF THESE DATA FOR INDIVIDUAL USE OR AGGREGATION USE WITH OTHER DATA.



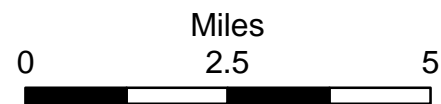
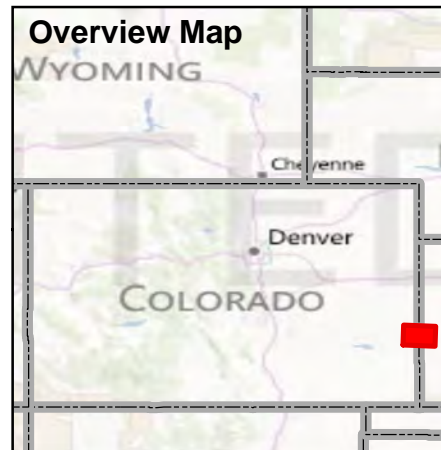


February 2013 Oil and Gas Lease Sale

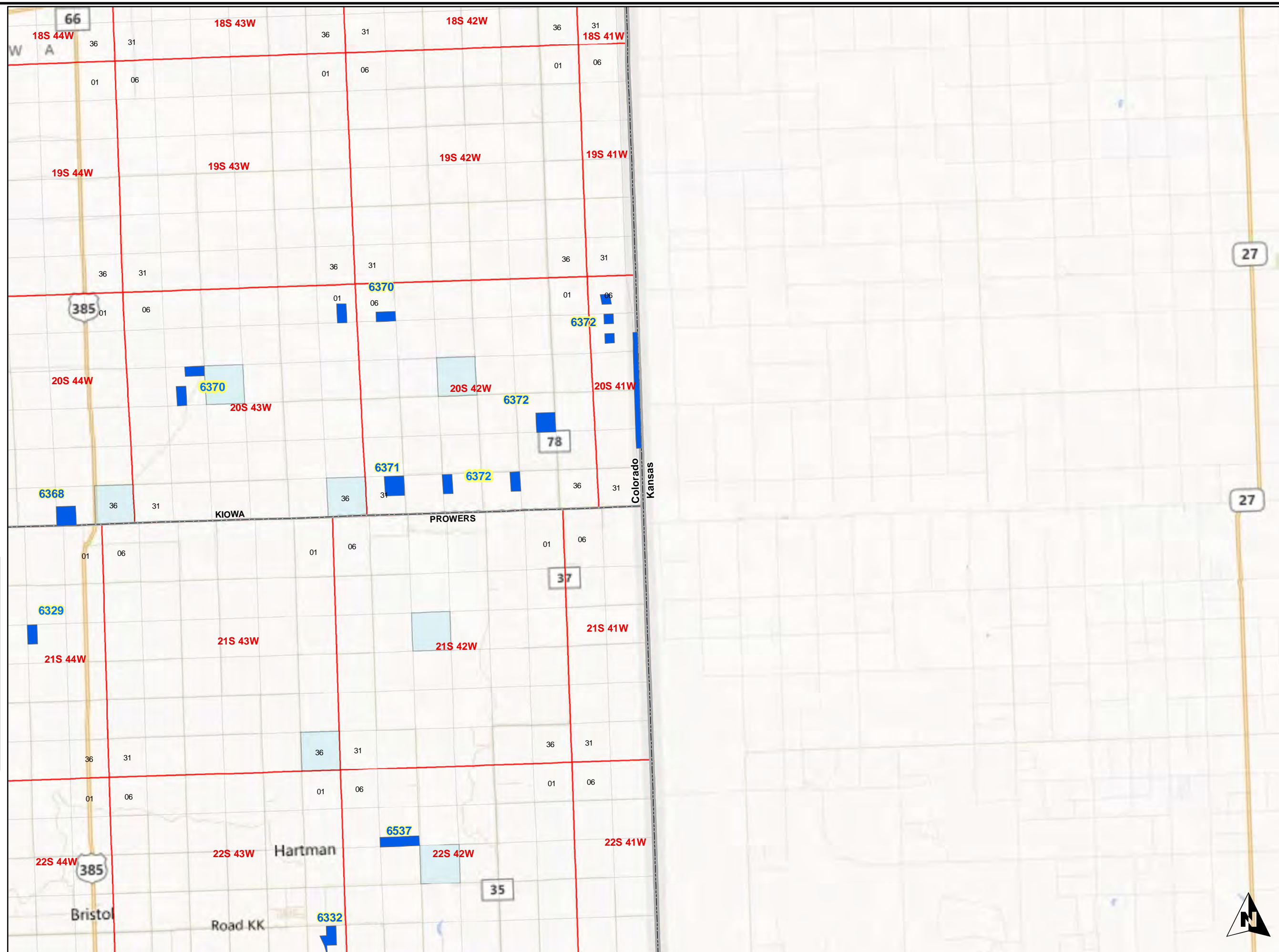
DOI-BLM-CO-200-2012-0060 EA O&G

Legend

- Available Parcels
- Ozone Non-Attainment
- County Boundaries
- Bureau of Land Management
- Bureau of Reclamation
- Indian Reservation
- Military Reservation
- National Grasslands
- National Park Service
- Other Federal
- Private
- State
- State, County, City; Areas
- Bankhead-Jones Land Use Lands
- US Fish and Wildlife Service
- US Forest Service



NO WARRANTY IS MADE BY THE BUREAU OF LAND MANAGEMENT AS TO THE ACCURACY, RELIABILITY, OR COMPLETENESS OF THESE DATA FOR INDIVIDUAL USE OR AGGREGATION USE WITH OTHER DATA.



27

27



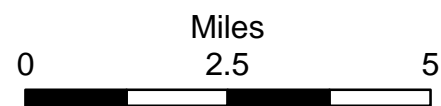
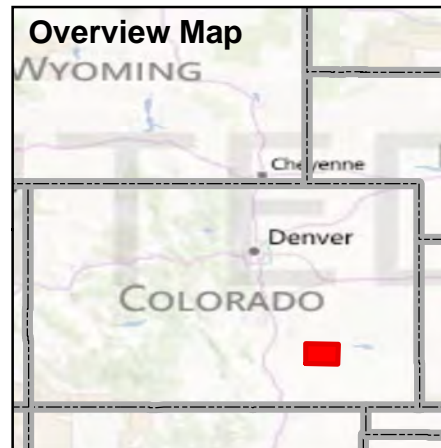


February 2013 Oil and Gas Lease Sale

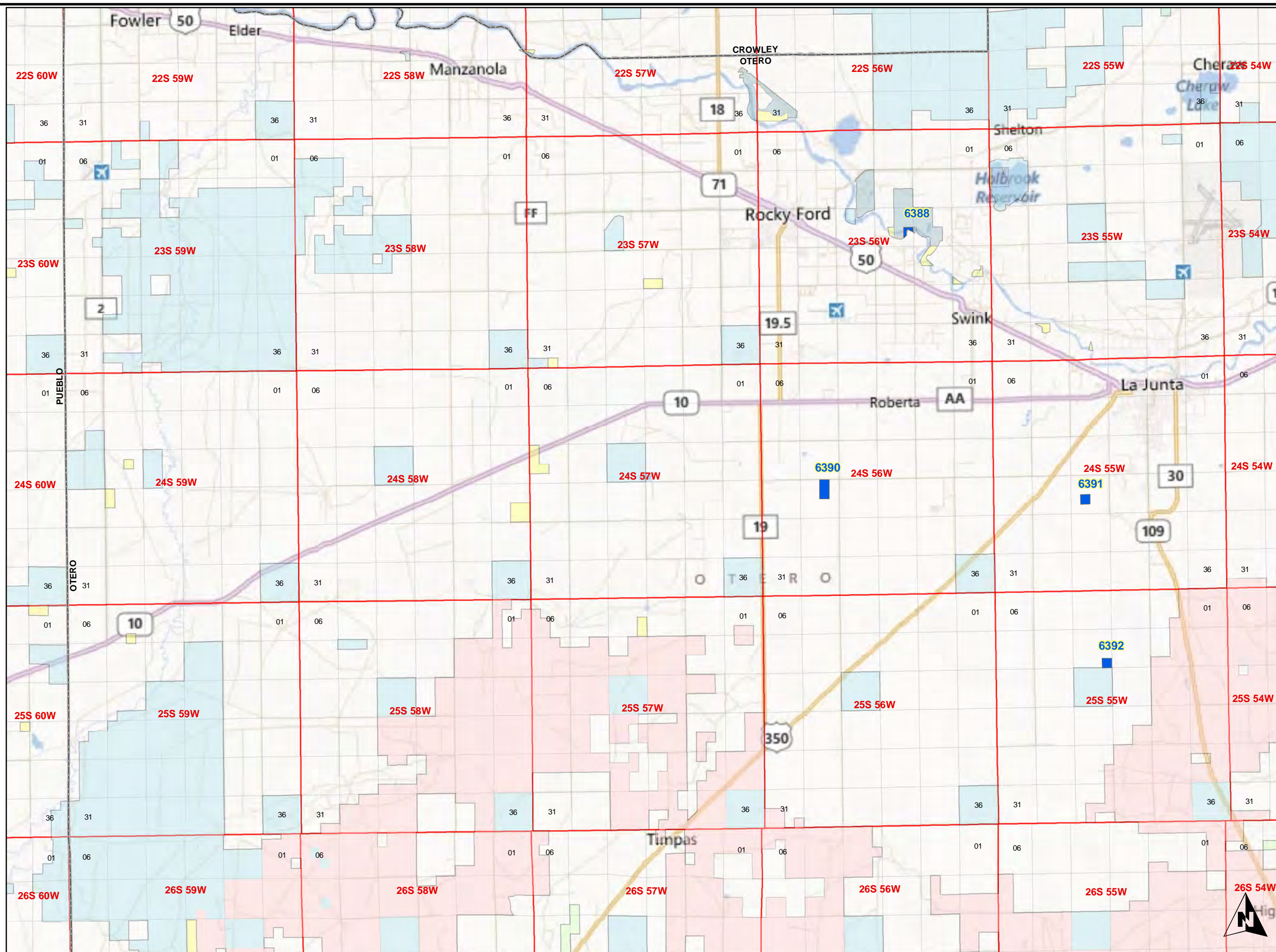
DOI-BLM-CO-200-2012-0060 EA O&G

Legend

- Available Parcels
- Ozone Non-Attainment
- County Boundaries
- Bureau of Land Management
- Bureau of Reclamation
- Indian Reservation
- Military Reservation
- National Grasslands
- National Park Service
- Other Federal
- Private
- State
- State, County, City; Areas
- Bankhead-Jones Land Use Lands
- US Fish and Wildlife Service
- US Forest Service



NO WARRANTY IS MADE BY THE BUREAU OF LAND MANAGEMENT AS TO THE ACCURACY, RELIABILITY, OR COMPLETENESS OF THESE DATA FOR INDIVIDUAL USE OR AGGREGATION USE WITH OTHER DATA.



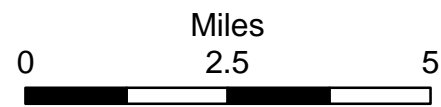
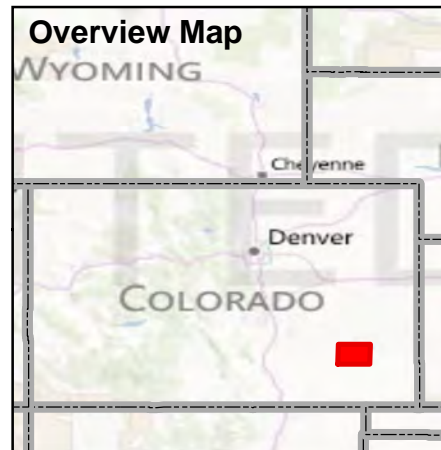


February 2013 Oil and Gas Lease Sale

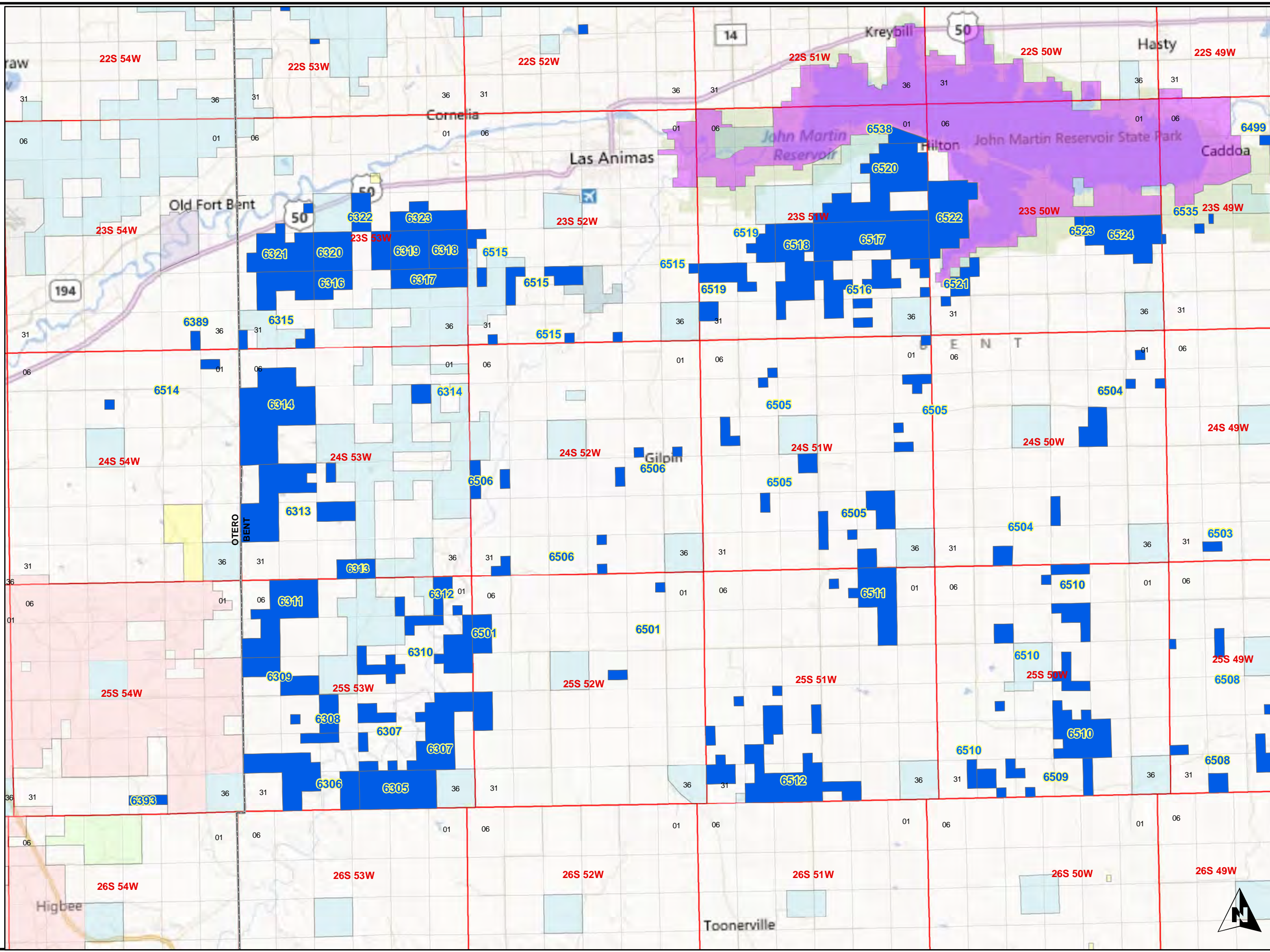
DOI-BLM-CO-200-2012-0060 EA O&G

Legend

- Available Parcels
- Ozone Non-Attainment
- County Boundaries
- Bureau of Land Management
- Bureau of Reclamation
- Indian Reservation
- Military Reservation
- National Grasslands
- National Park Service
- Other Federal
- Private
- State
- State, County, City; Areas
- Bankhead-Jones Land Use Lands
- US Fish and Wildlife Service
- US Forest Service



NO WARRANTY IS MADE BY THE BUREAU OF LAND MANAGEMENT AS TO THE ACCURACY, RELIABILITY, OR COMPLETENESS OF THESE DATA FOR INDIVIDUAL USE OR AGGREGATION USE WITH OTHER DATA.



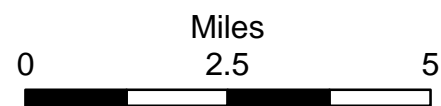
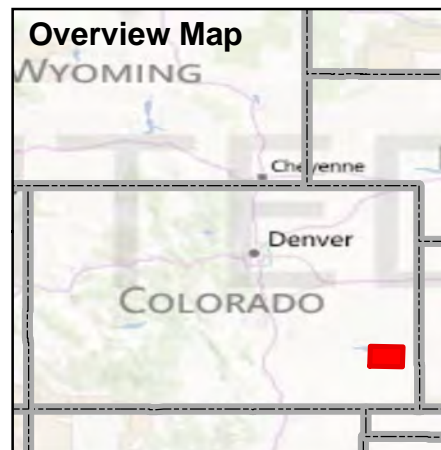


February 2013 Oil and Gas Lease Sale

DOI-BLM-CO-200-2012-0060 EA O&G

Legend

- Available Parcels
- Ozone Non-Attainment
- County Boundaries
- Bureau of Land Management
- Bureau of Reclamation
- Indian Reservation
- Military Reservation
- National Grasslands
- National Park Service
- Other Federal
- Private
- State
- State, County, City; Areas
- Bankhead-Jones Land Use Lands
- US Fish and Wildlife Service
- US Forest Service



NO WARRANTY IS MADE BY THE BUREAU OF LAND MANAGEMENT AS TO THE ACCURACY, RELIABILITY, OR COMPLETENESS OF THESE DATA FOR INDIVIDUAL USE OR AGGREGATION USE WITH OTHER DATA.


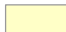

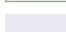


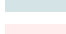


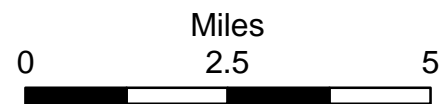
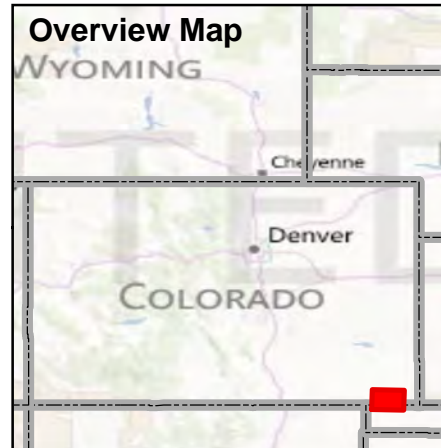


February 2013 Oil and Gas Lease Sale

DOI-BLM-CO-200-2012-0060 EA O&G

Legend

-  Available Parcels
-  Ozone Non-Attainment
-  County Boundaries
-  Bureau of Land Management
-  Bureau of Reclamation
-  Indian Reservation
-  Military Reservation
-  National Grasslands
-  National Park Service
-  Other Federal
-  Private
-  State
-  State, County, City; Areas
-  Bankhead-Jones Land Use Lands
-  US Fish and Wildlife Service
-  US Forest Service



NO WARRANTY IS MADE BY THE BUREAU OF LAND MANAGEMENT AS TO THE ACCURACY, RELIABILITY, OR COMPLETENESS OF THESE DATA FOR INDIVIDUAL USE OR AGGREGATION USE WITH OTHER DATA.

