

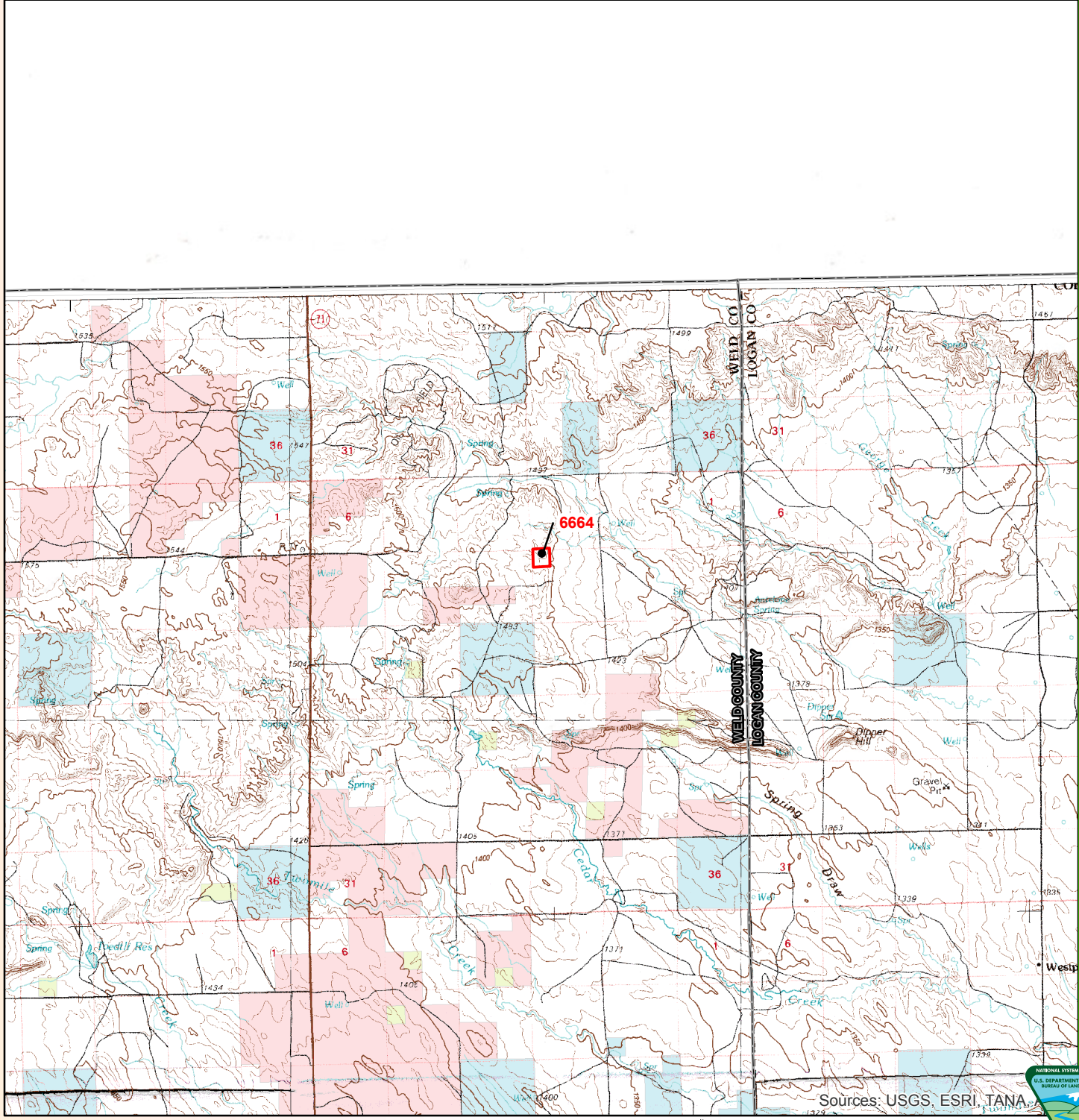
Map Extent Indicator

Map Features

- November 2013 Lease Sale
- Counties

Surface Land Ownership

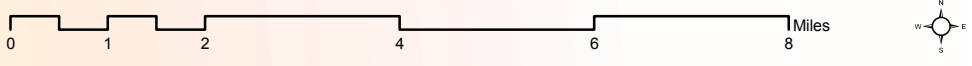
- National Grasslands
- Private
- State
- Bankhead-Jones Land Use Lands



Weld Group 1

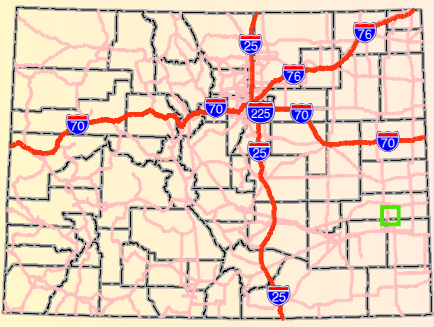
NOTE TO MAP USERS: No warrantee is made by the Bureau of Land Management as to the accuracy, reliability, or completeness of the data layers shown on this map. The official lands records of the data providers should be checked for current status on any specific tract of land.

Map produced by: BP Zank
BLM - Royal Gorge Field Office
01/18/2013



Sources: USGS, ESRI, TANA





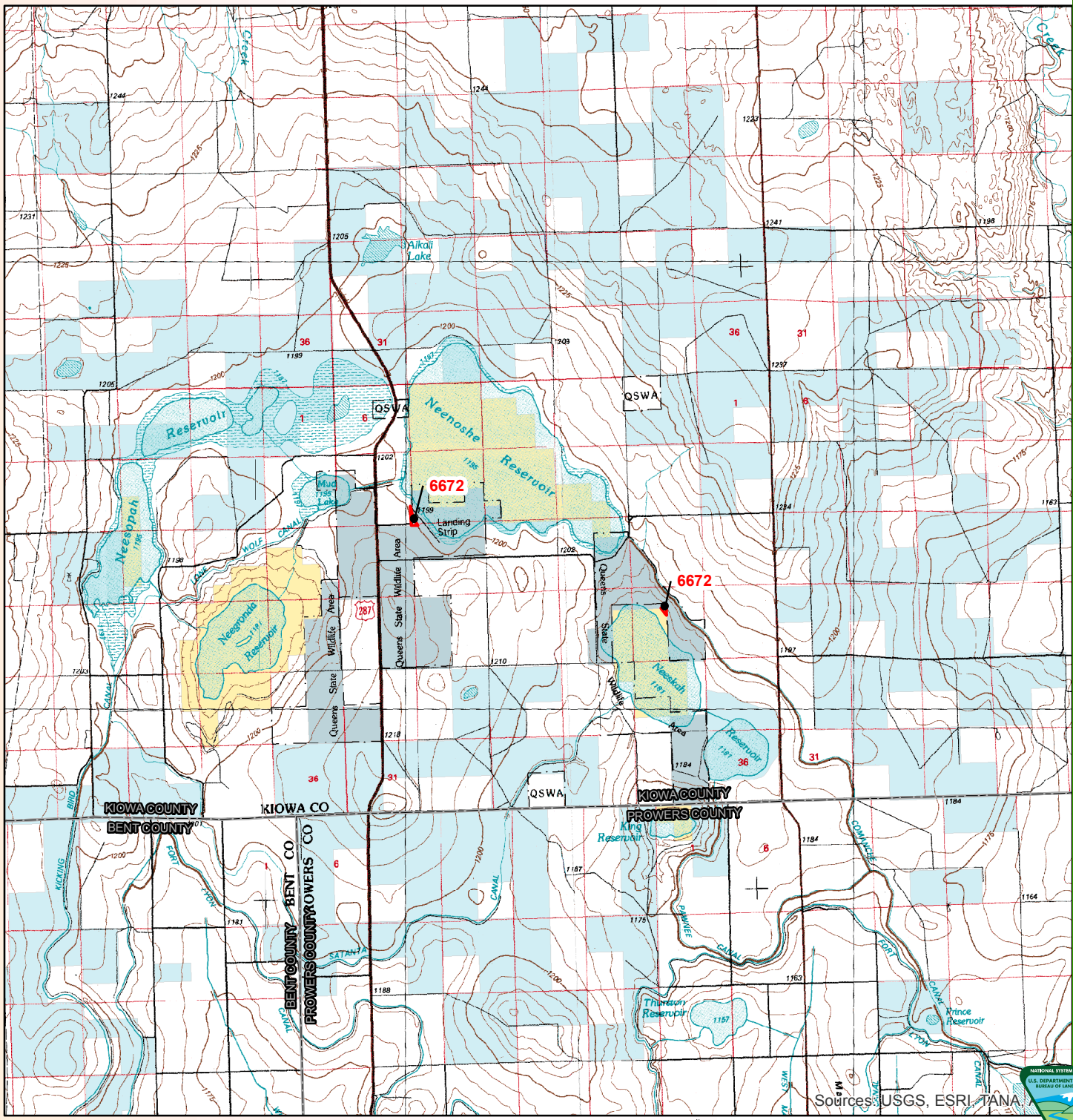
Map Extent Indicator

Map Features

- November 2013 Lease Sale
- Counties

Surface Land Ownership

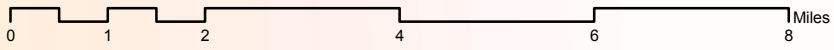
- Bureau of Land Management
- Private
- State
- State, County, City; Areas



Kiowa Group 1

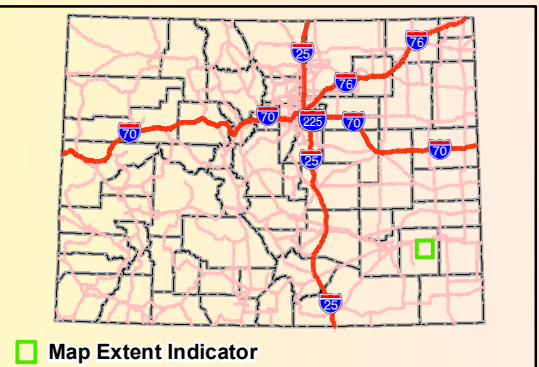
NOTE TO MAP USERS: No warrantee is made by the Bureau of Land Management as to the accuracy, reliability, or completeness of the data layers shown on this map. The official lands records of the data providers should be checked for current status on any specific tract of land.

Map produced by: BP Zank
BLM - Royal Gorge Field Office
01/18/2013



Sources: USGS, ESRI, TANA



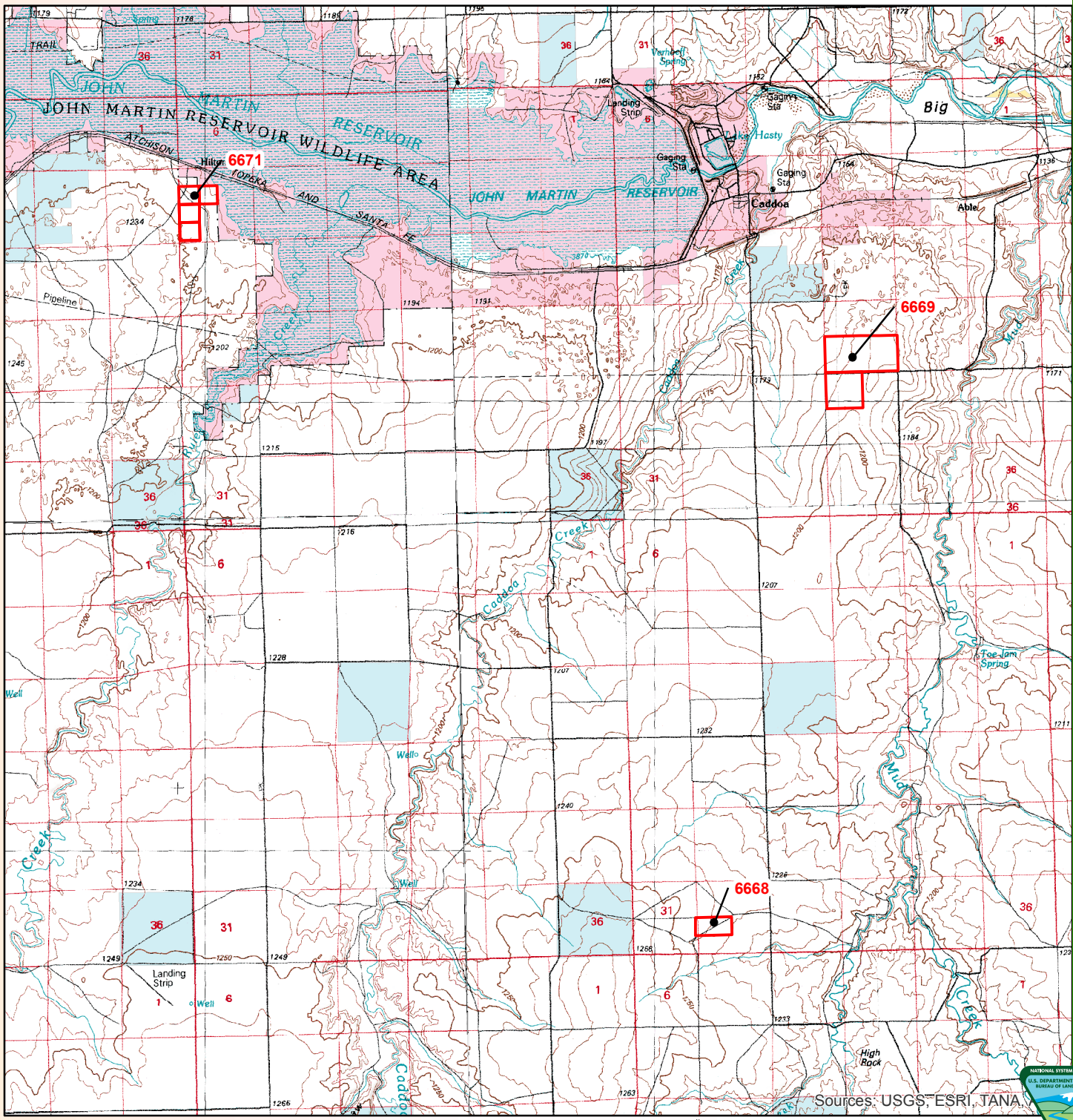


Map Features

- November 2013 Lease Sale
- Counties

Surface Land Ownership

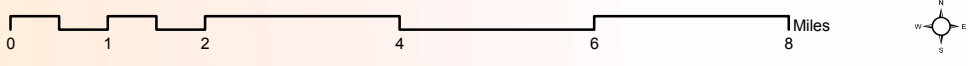
- Bureau of Land Management
- Military Reservation
- Private
- State



Bent Group 1

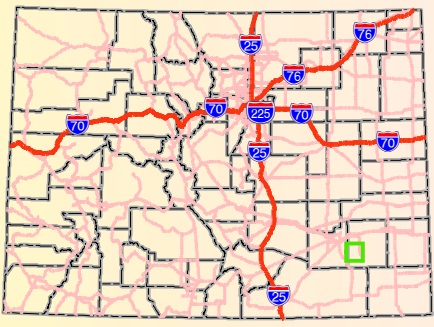
NOTE TO MAP USERS: No warranty is made by the Bureau of Land Management as to the accuracy, reliability, or completeness of the data layers shown on this map. The official lands records of the data providers should be checked for current status on any specific tract of land.

Map produced by: BP Zank
BLM - Royal Gorge Field Office
01/18/2013



Sources: USGS, ESRI, TANA





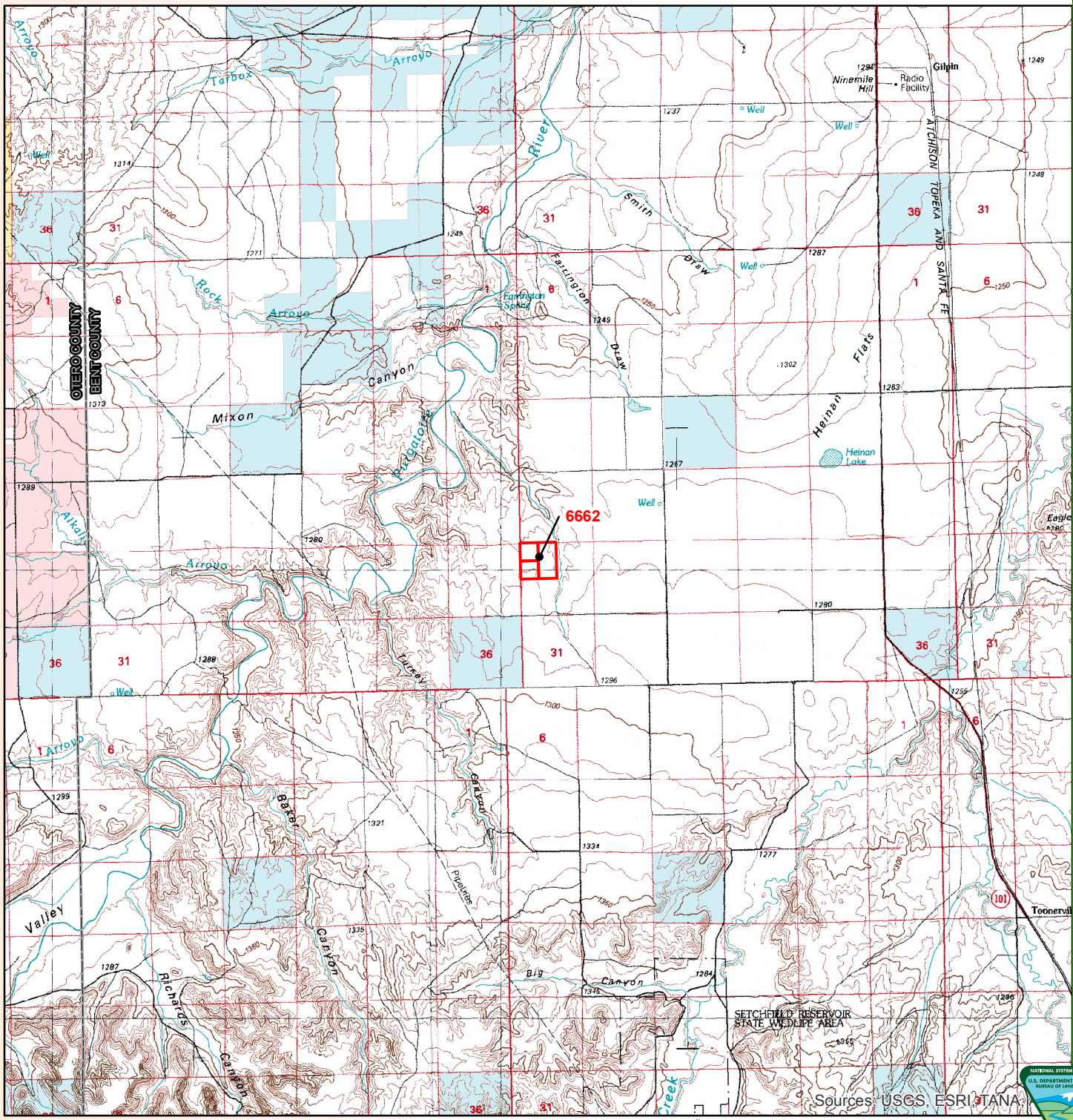
Map Extent Indicator

Map Features

- November 2013 Lease Sale
- Counties

Surface Land Ownership

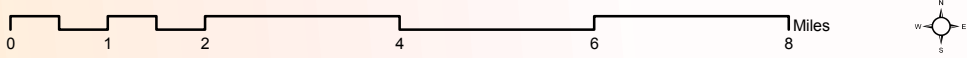
- Bureau of Land Management
- Private
- State
- Bankhead-Jones Land Use Lands



Bent Group 2

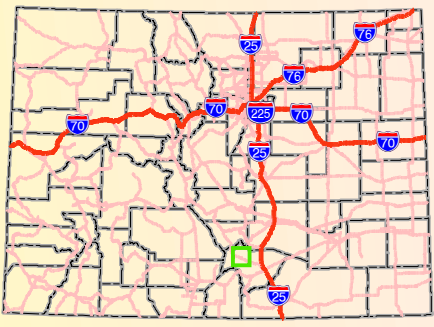
NOTE TO MAP USERS: No warrantee is made by the Bureau of Land Management as to the accuracy, reliability, or completeness of the data layers shown on this map. The official lands records of the data providers should be checked for current status on any specific tract of land.

Map produced by: BP Zank
BLM - Royal Gorge Field Office
01/18/2013



Sources USGS, ESRI, ANA





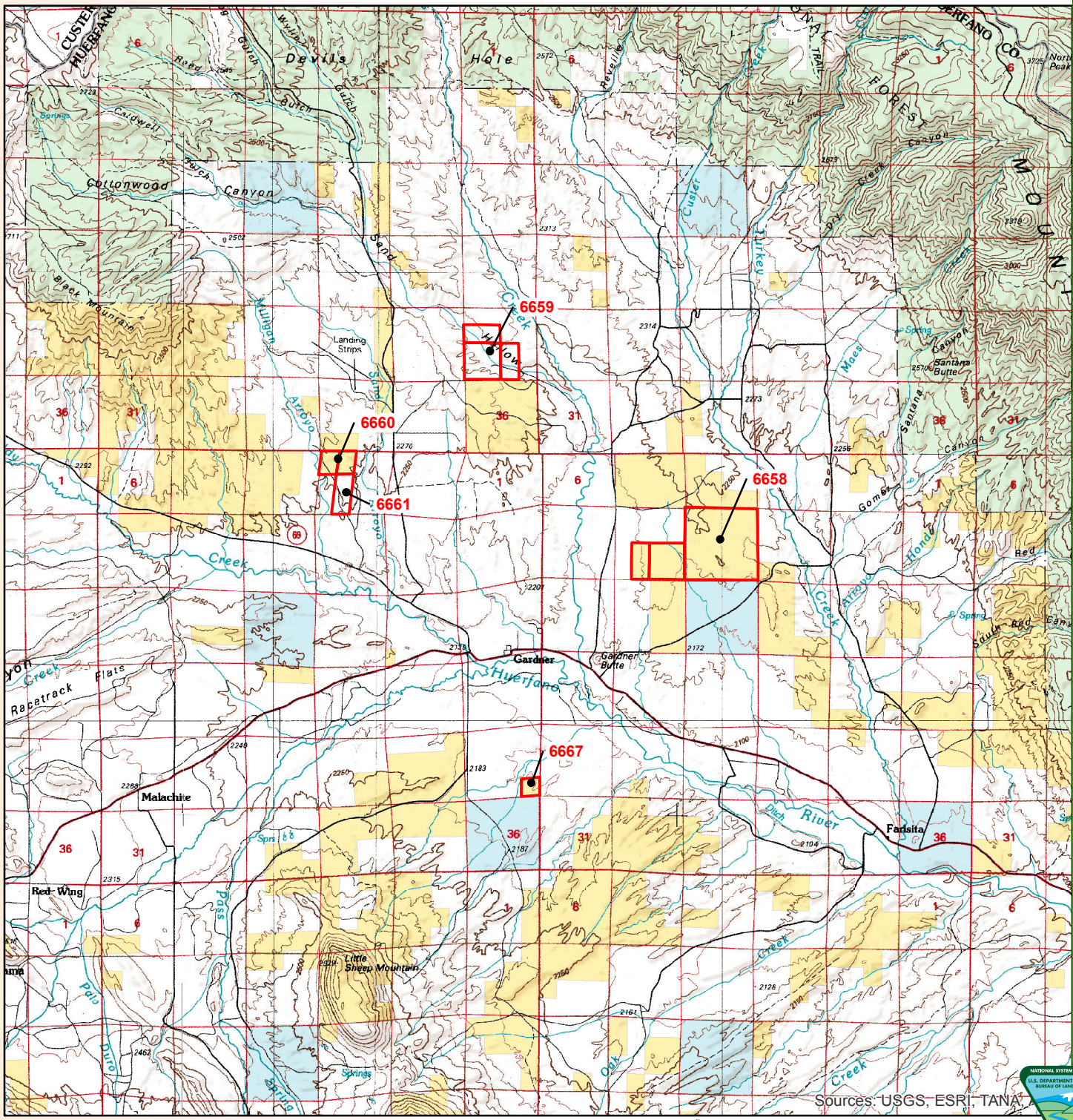
Map Extent Indicator

Map Features

- November 2013 Lease Sale
- Counties

Surface Land Ownership

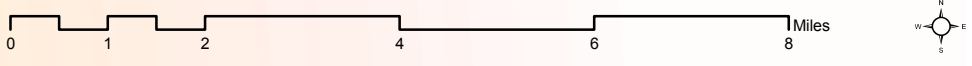
- Bureau of Land Management
- Private
- State
- US Forest Service



Huerfano Group 1

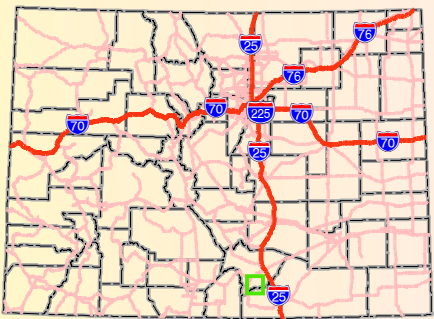
NOTE TO MAP USERS: No warrantee is made by the Bureau of Land Management as to the accuracy, reliability, or completeness of the data layers shown on this map. The official lands records of the data providers should be checked for current status on any specific tract of land.

Map produced by: BP Zank
BLM - Royal Gorge Field Office
01/18/2013



Sources: USGS, ESRI, TANAN





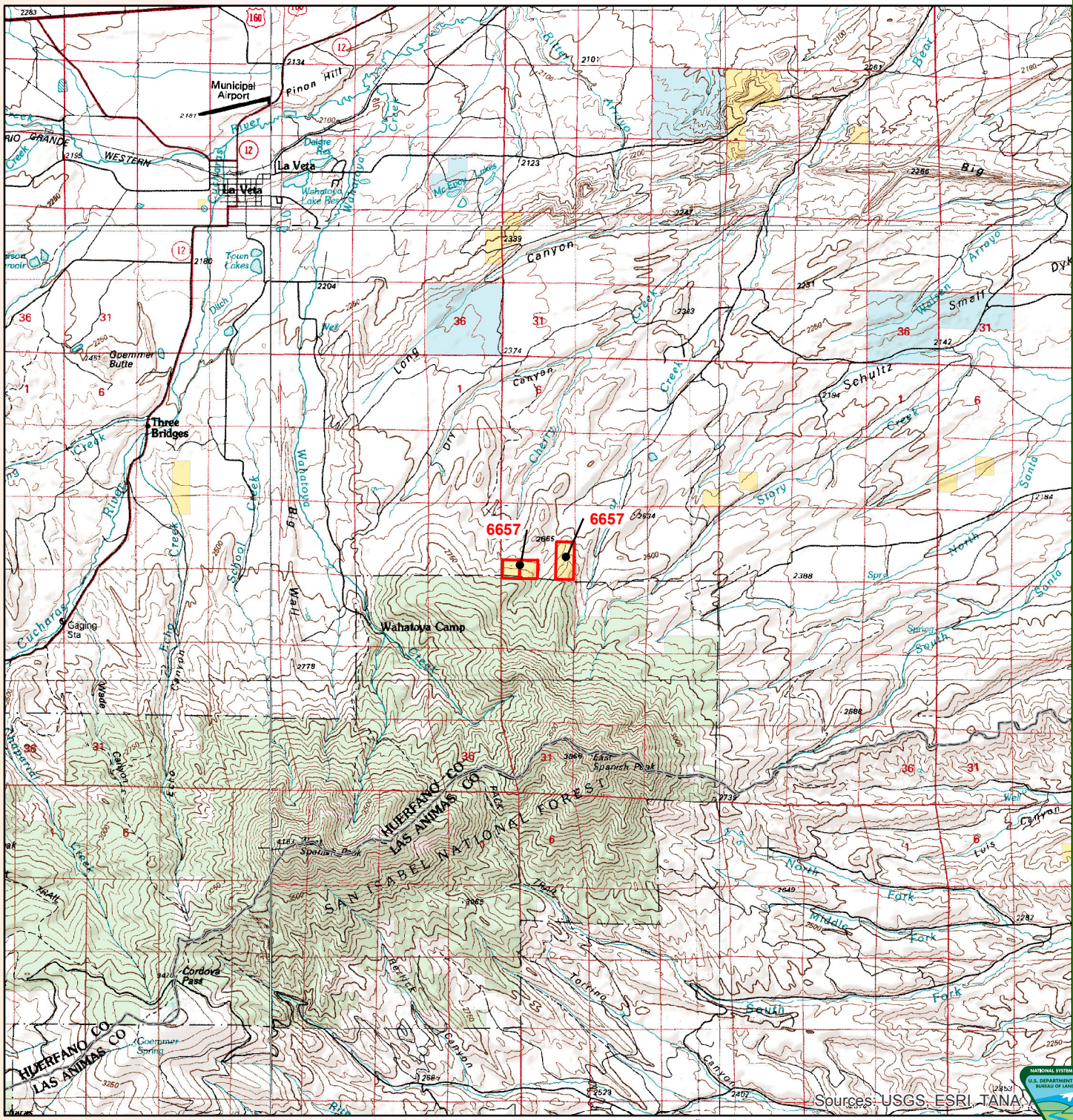
Map Extent Indicator

Map Features

- November 2013 Lease Sale
- Counties

Surface Land Ownership

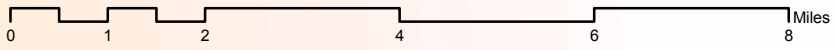
- Bureau of Land Management
- Private
- State
- US Forest Service



Huerfano Group 2

NOTE TO MAP USERS: No warrantee is made by the Bureau of Land Management as to the accuracy, reliability, or completeness of the data layers shown on this map. The official lands records of the data providers should be checked for current status on any specific tract of land.

Map produced by: BP Zank
BLM - Royal Gorge Field Office
01/18/2013



Sources: USGS, ESRI, TANA

