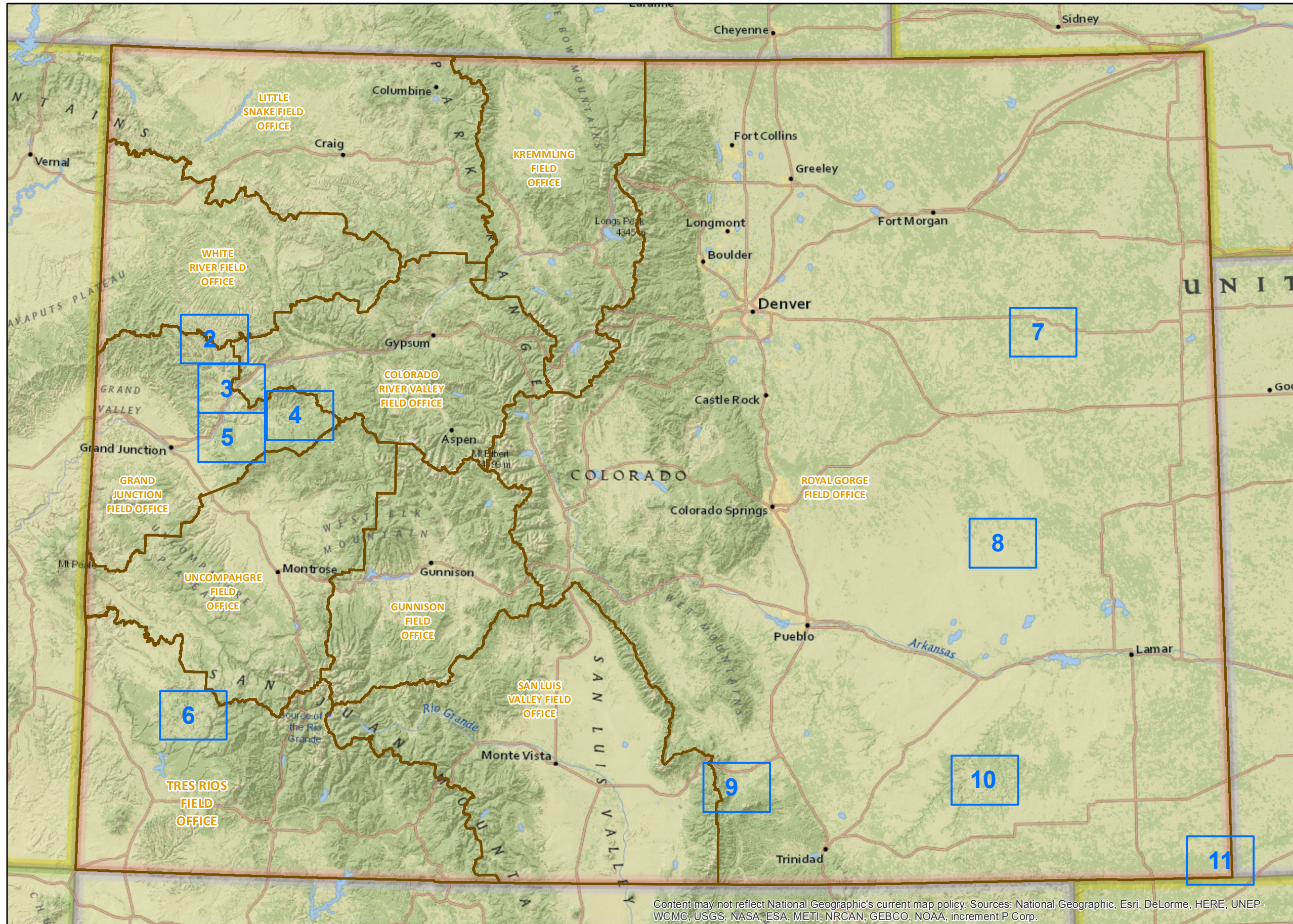


BLM Competitive Oil and Gas Lease Sale November, 2016



Legend

- BLM Field Office Areas
- Lease Map Pages

Please click on the Close Up Map Pages to see more detail.

3

3 / 11

Click on the Page Navigation Tools to return to this Index map on Page 1.

Content may not reflect National Geographic's current map policy. Sources: National Geographic, Esri, DeLorme, HERE, UNEP-WCMC, USGS, NASA, ESA, METI, NRCAN, GEBCO, NOAA, increment P Corp.



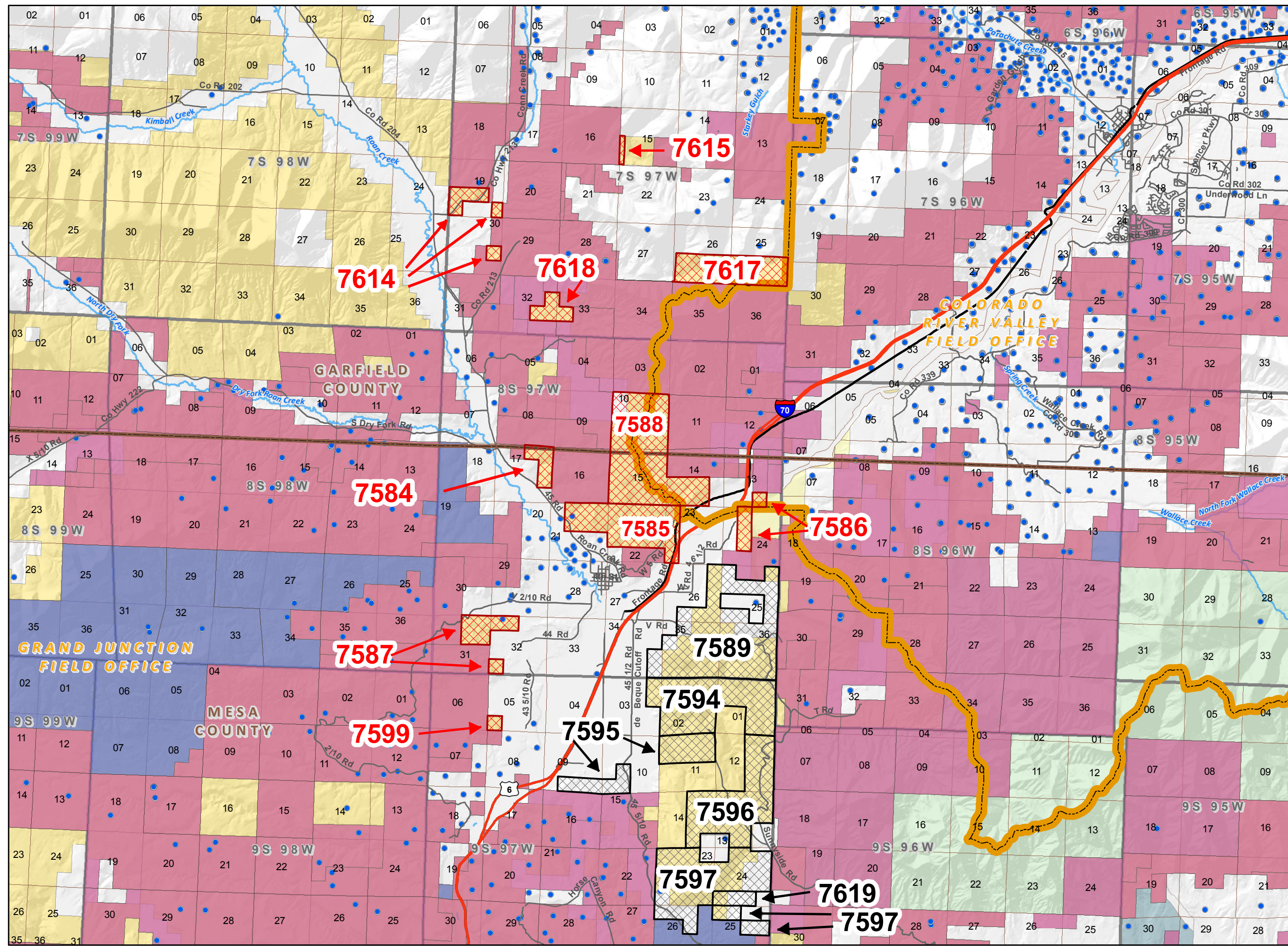
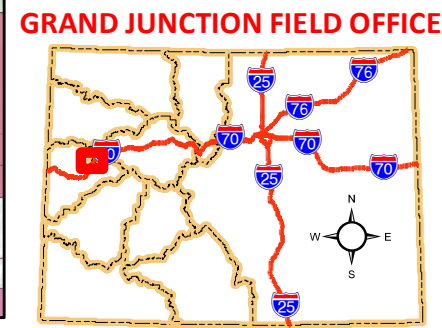
NOTE TO MAP USERS
No warrantee is made by the Bureau of Land Management as to the accuracy, reliability, or completeness of the data layers shown on this map. The official land records should be checked for the current status on any specific tract of land.

Legend

- BLM Field Office Areas Boundaries
- Lease Parcels**
- Status**
- Deferral
- Sale
- COGCC Oil and Gas Well Locations
- Oil and Gas Leases**
- Non-Producing Leases
- Producing Leases
- Township & Range
- Sections
- Bureau of Land Management
- Bureau of Reclamation
- Private
- State, County, City; Areas
- US Forest Service
- County Boundaries
- Streams
- Interstates
- U.S. Highway
- County & Main Roads
- Other Cities and Towns



**Map Page Location
Page Number 3**





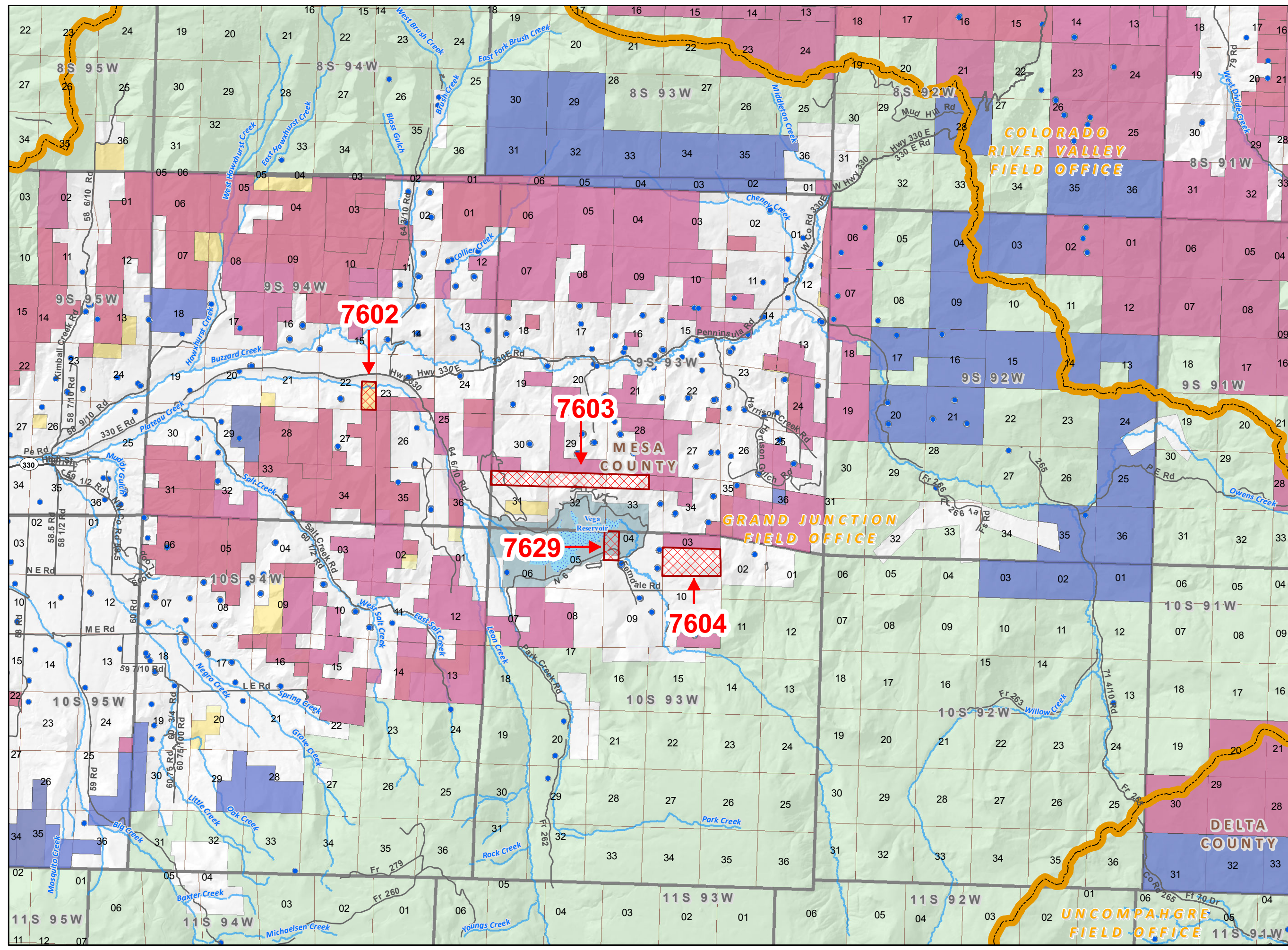
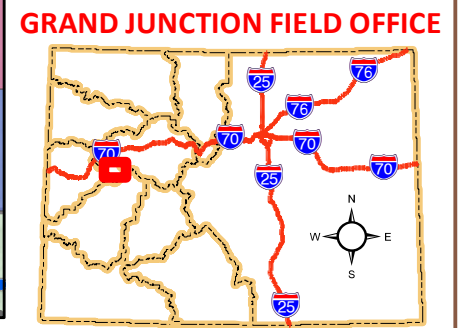
NOTE TO MAP USERS
No warrantee is made by the Bureau of Land Management as to the accuracy, reliability, or completeness of the data layers shown on this map. The official land records should be checked for the current status on any specific tract of land.

Legend

- BLM Field Office Areas Boundaries
- Lease Parcels**
- Status**
- Sale
- COGCC Oil and Gas Well Locations
- Oil and Gas Leases**
- Non-Producing Leases
- Producing Leases
- Township & Range
- Sections
- Bureau of Land Management
- Bureau of Reclamation
- Private
- State, County, City; Areas
- US Forest Service
- County Boundaries
- Lakes and Reservoirs
- Streams
- State Highway
- County & Main Roads
- Other Cities and Towns



**Map Page Location
Page Number 4**





NOTE TO MAP USERS
No warrantee is made by the Bureau of Land Management as to the accuracy, reliability, or completeness of the data layers shown on this map. The official land records should be checked for the current status on any specific tract of land.

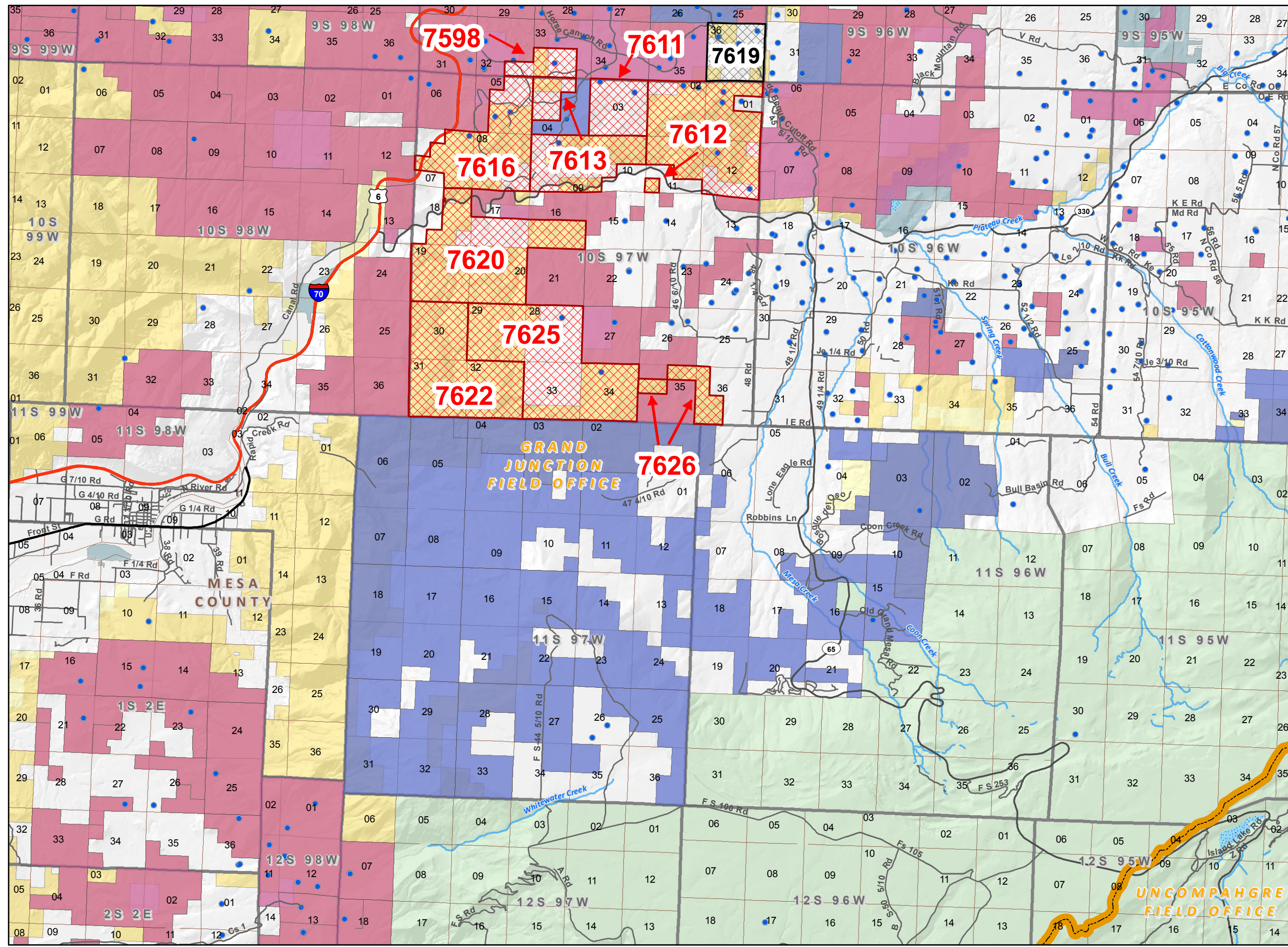
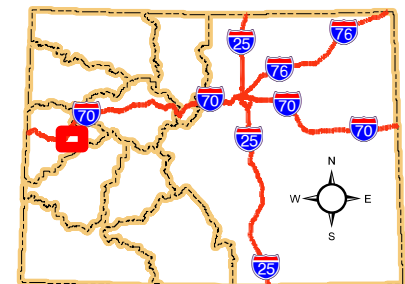
Legend

- BLM Field Office Areas Boundaries
- Lease Parcels**
- Status**
- Deferral
- Sale
- COGCC Oil and Gas Well Locations
- Oil and Gas Leases**
- Non-Producing Leases
- Producing Leases
- Township & Range
- Sections
- Bureau of Land Management
- Bureau of Reclamation
- Private
- State
- State, County, City; Areas
- US Forest Service
- County Boundaries
- Lakes and Reservoirs
- Streams
- Interstates
- U.S. Highway
- State Highway
- County & Main Roads
- Other Cities and Towns



**Map Page Location
Page Number 5**

GRAND JUNCTION FIELD OFFICE





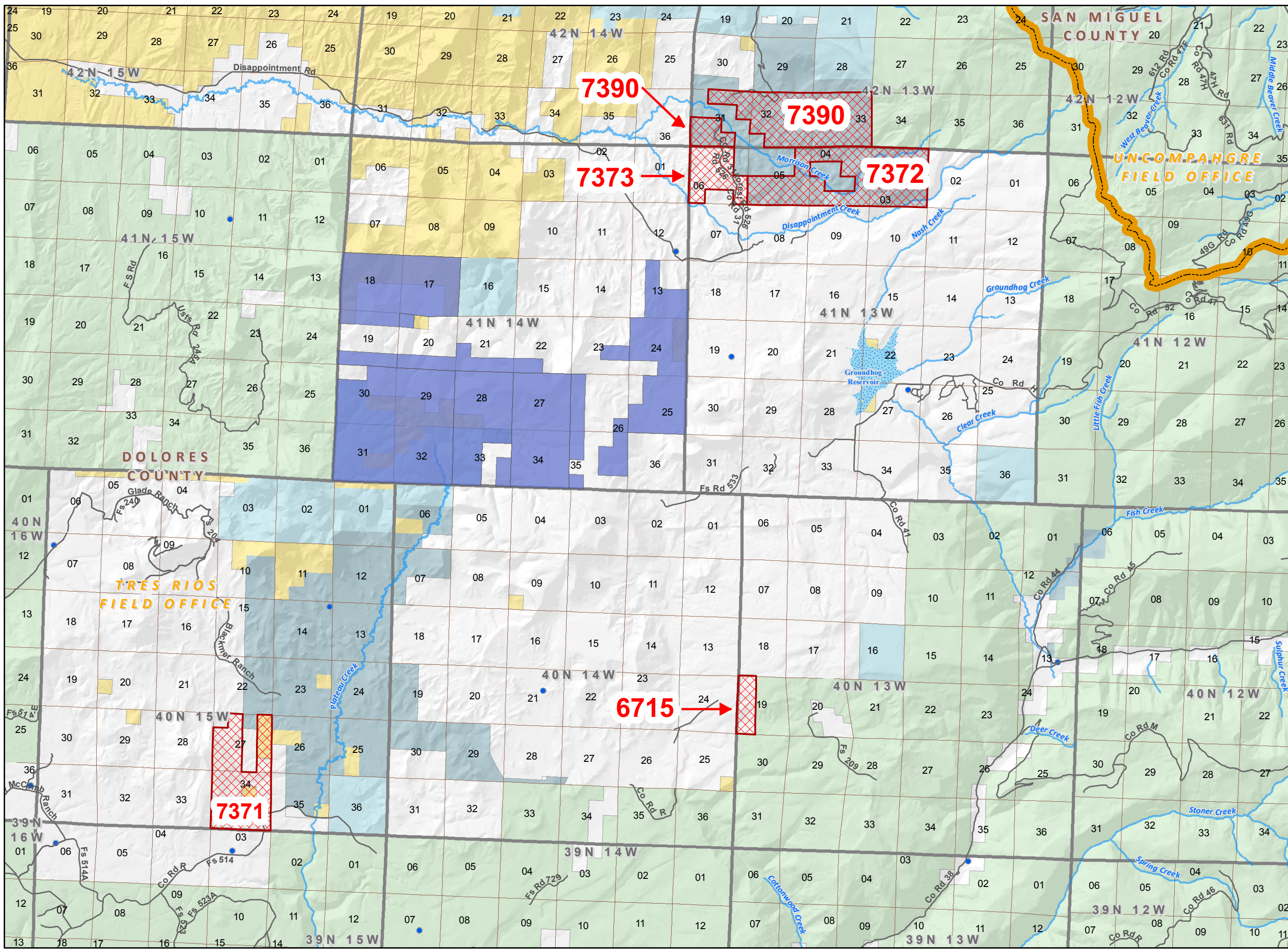
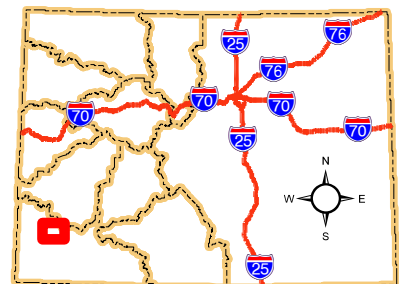
NOTE TO MAP USERS
No warrant is made by the Bureau of Land Management as to the accuracy, reliability, or completeness of the data layers shown on this map. The official land records should be checked for the current status on any specific tract of land.

Legend

- BLM Field Office Areas Boundaries
- Lease Parcels**
- Status**
- Sale
- COGCC Oil and Gas Well Locations
- Oil and Gas Leases**
- Non-Producing Leases
- Township & Range
- Sections
- Bureau of Land Management
- Other Federal
- Private
- State
- State, County, City; Areas
- US Forest Service
- County Boundaries
- Lakes and Reservoirs
- Streams
- County & Main Roads

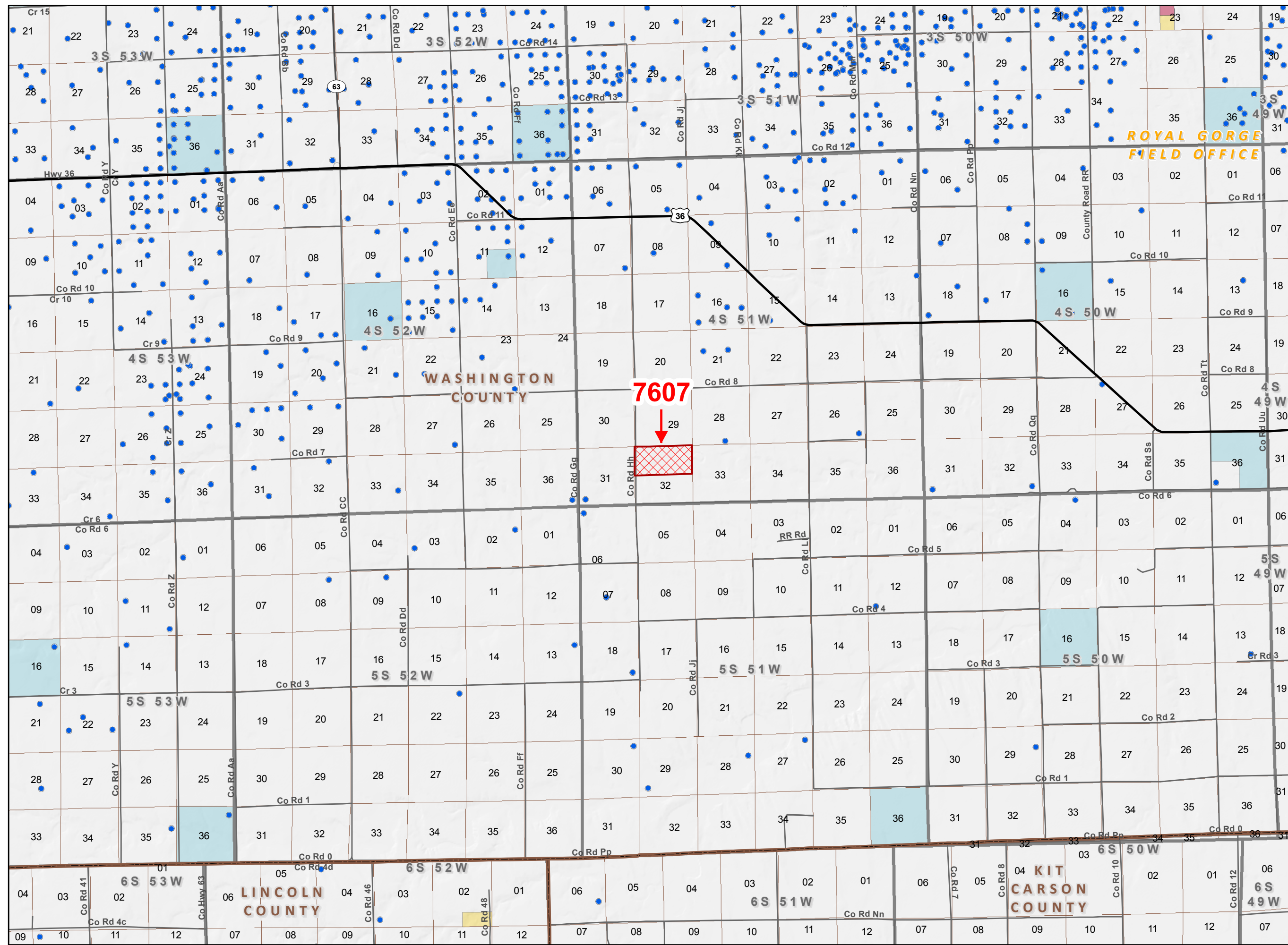


**Map Page Location
Page Number 6
TRES RIOS FIELD OFFICE**





NOTE TO MAP USERS
No warrant is made by the Bureau of Land Management as to the accuracy, reliability, or completeness of the data layers shown on this map. The official land records should be checked for the current status on any specific tract of land.



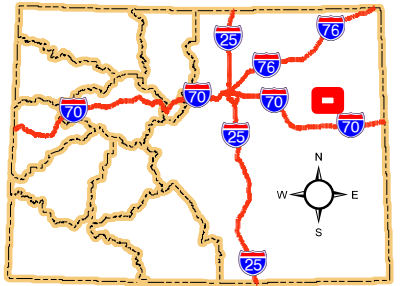
Legend

- BLM Field Office Areas Boundaries
- Lease Parcels**
- Status**
- Sale
- COGCC Oil and Gas Well Locations
- Oil and Gas Leases**
- Producing Leases
- Township & Range
- Sections
- Bureau of Land Management
- Private
- State
- County Boundaries
- U.S. Highway
- State Highway
- County & Main Roads
- Other Cities and Towns



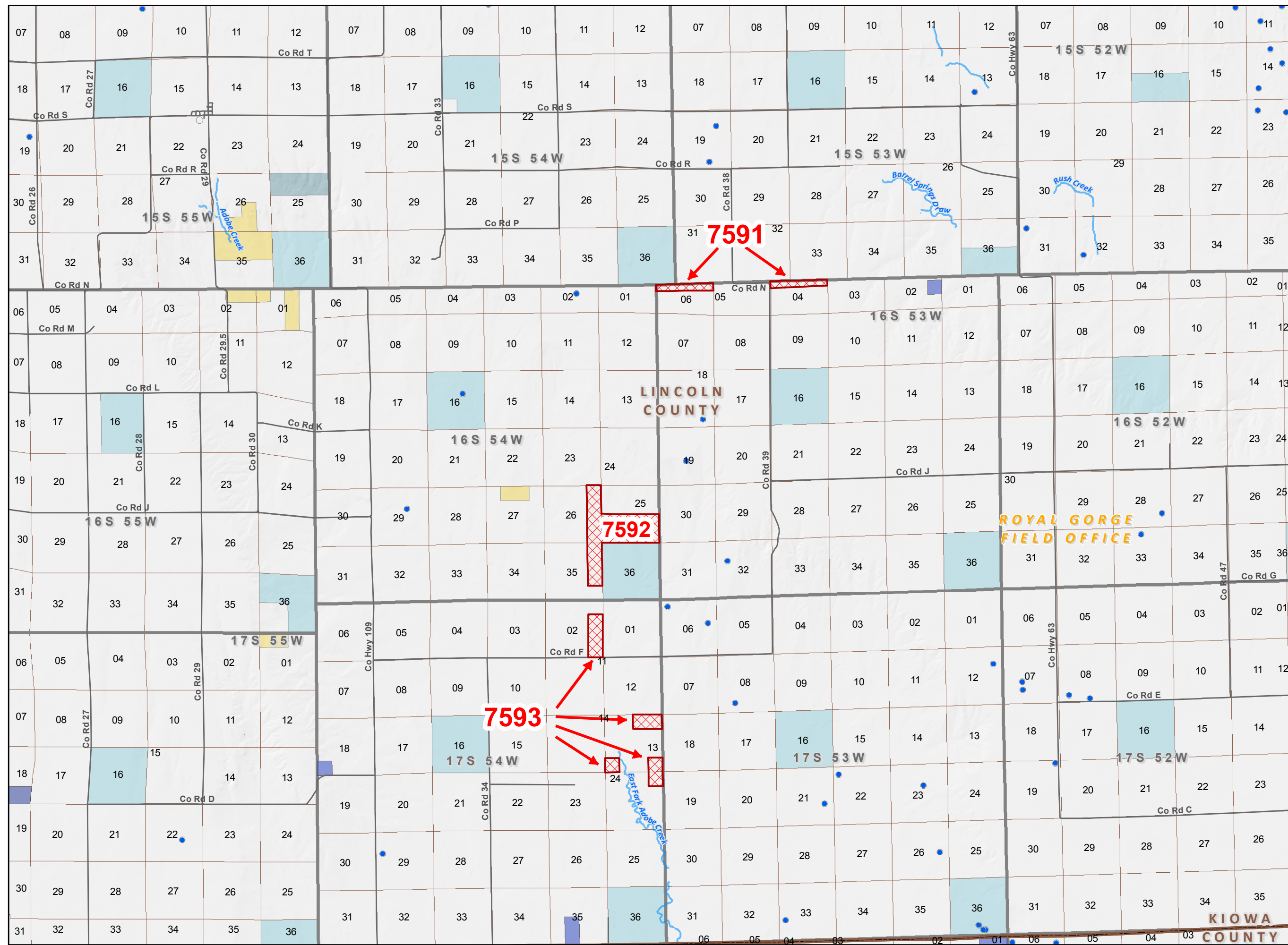
**Map Page Location
Page Number 7**

ROYAL GORGE FIELD OFFICE





NOTE TO MAP USERS
No warrantee is made by the Bureau of Land Management as to the accuracy, reliability, or completeness of the data layers shown on this map. The official land records should be checked for the current status on any specific tract of land.



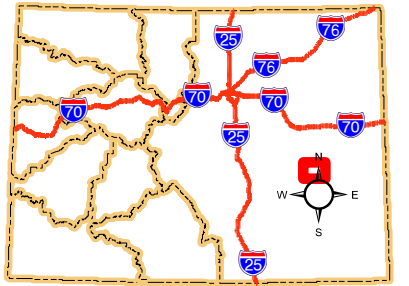
Legend

- BLM Field Office Areas Boundaries
- Lease Parcels**
- Status**
- Sale
- COGCC Oil and Gas Well Locations
- Oil and Gas Leases**
- Non-Producing Leases
- Township & Range
- Sections
- Bureau of Land Management
- Private
- State
- State, County, City; Areas
- County Boundaries
- Streams
- County & Main Roads
- Other Cities and Towns



**Map Page Location
Page Number 8**

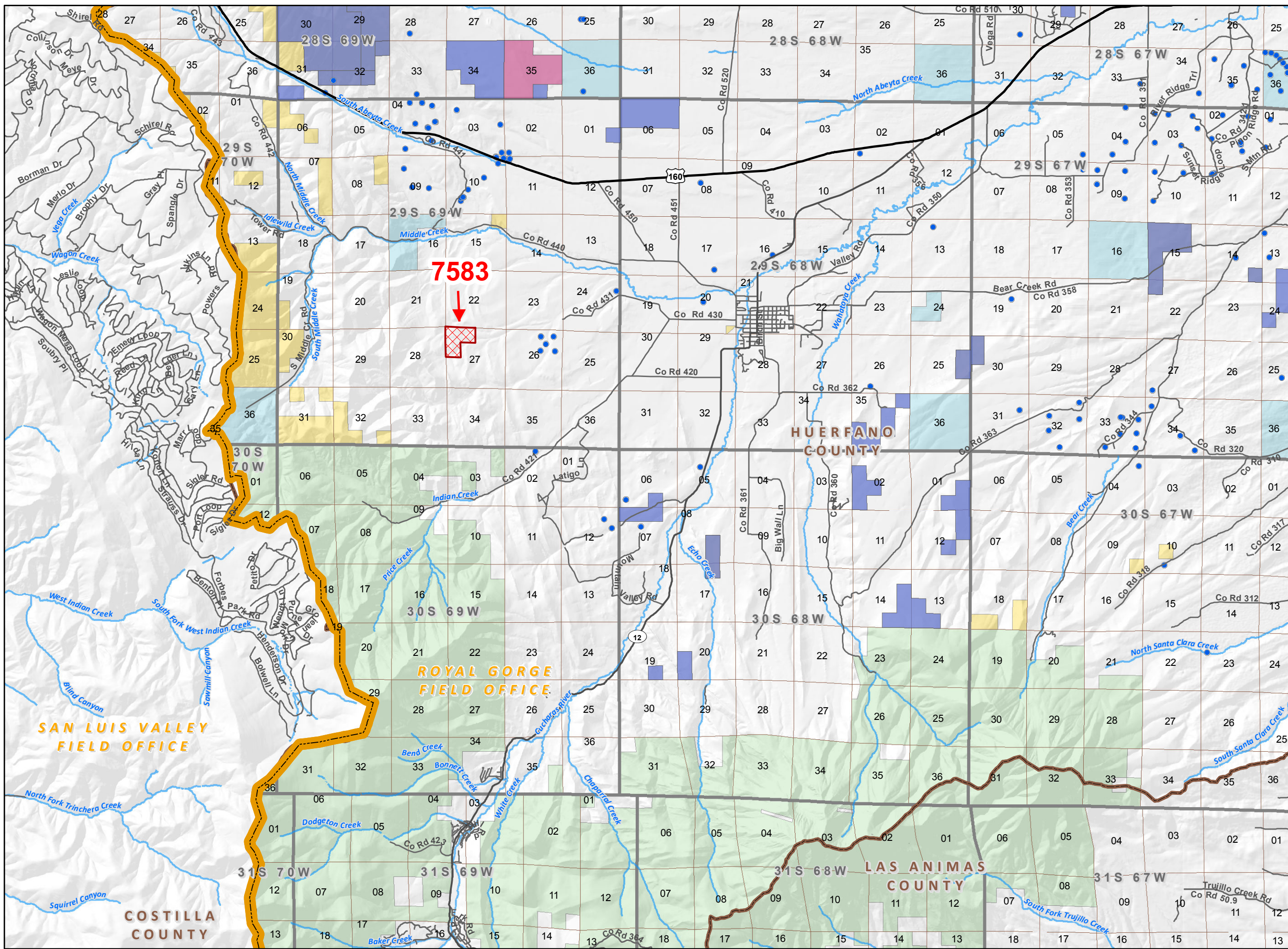
ROYAL GORGE FIELD OFFICE



**Bureau of Land Management
Competitive Oil & Gas Lease Sale
November, 2016**



NOTE TO MAP USERS
No warrant is made by the Bureau of Land Management as to the accuracy, reliability, or completeness of the data layers shown on this map. The official land records should be checked for the current status on any specific tract of land.



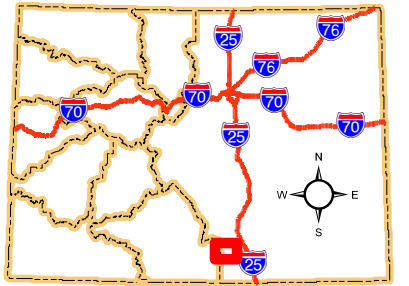
Legend

- BLM Field Office Areas Boundaries
- Lease Parcels**
- Status**
- Sale
- COGCC Oil and Gas Well Locations
- Oil and Gas Leases**
- Non-Producing Leases
- Producing Leases
- Township & Range
- Sections
- Bureau of Land Management
- Private
- State
- US Forest Service
- County Boundaries
- Streams
- U.S. Highway
- State Highway
- County & Main Roads
- Other Cities and Towns



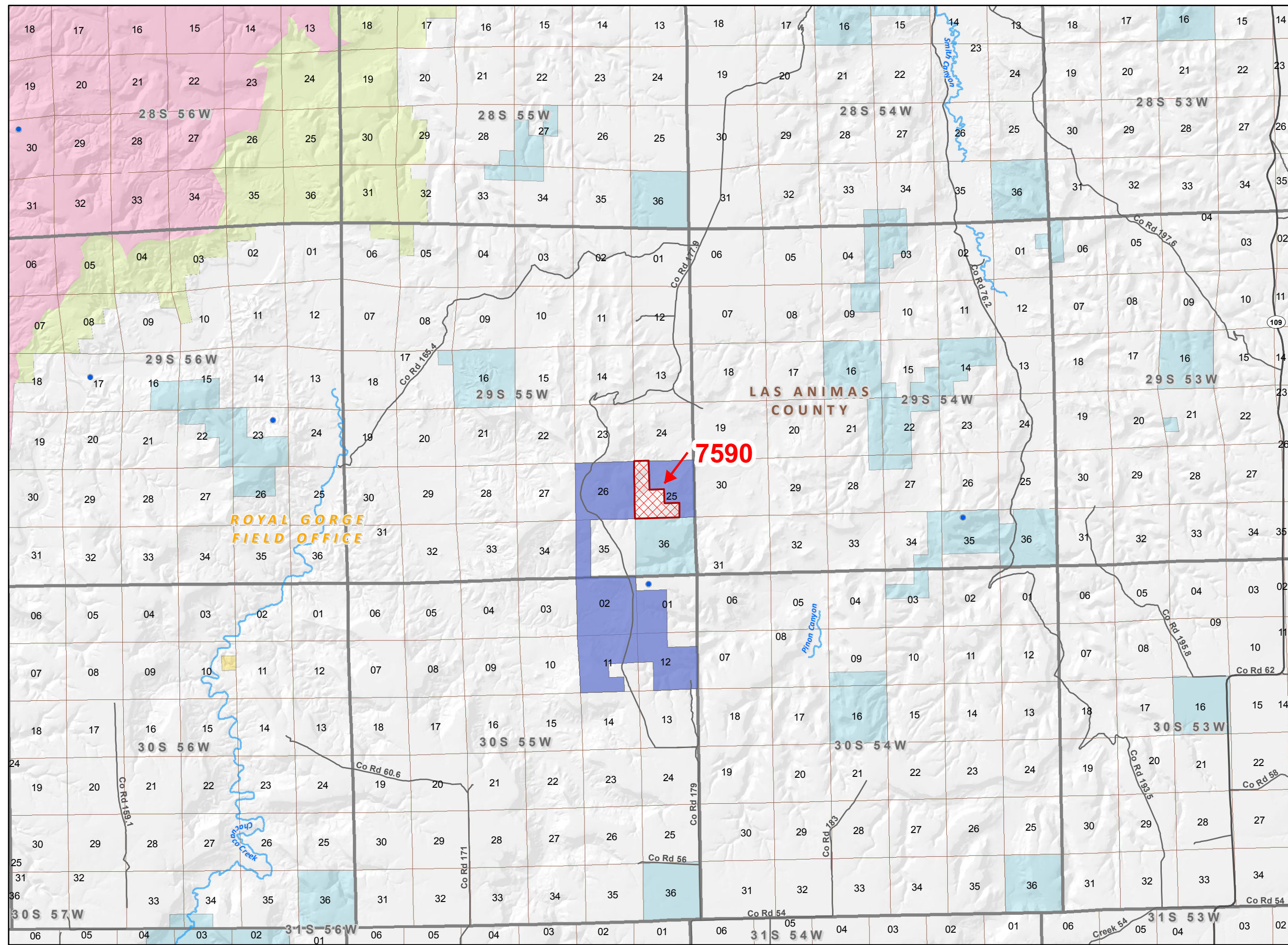
**Map Page Location
Page Number 9**

ROYAL GORGE FIELD OFFICE





NOTE TO MAP USERS
No warrant is made by the Bureau of Land Management as to the accuracy, reliability, or completeness of the data layers shown on this map. The official land records should be checked for the current status on any specific tract of land.



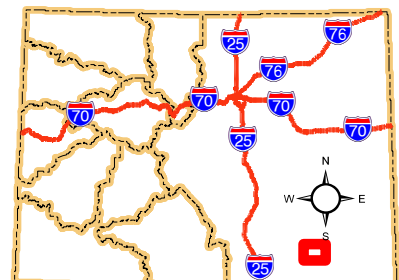
Legend

- BLM Field Office Areas Boundaries
- Lease Parcels**
- Status**
- Sale
- COGCC Oil and Gas Well Locations
- Oil and Gas Leases**
- Non-Producing Leases
- Township & Range
- Sections
- Bureau of Land Management
- Military Reservation
- National Grasslands
- Private
- State
- County Boundaries
- Streams
- State Highway
- County & Main Roads



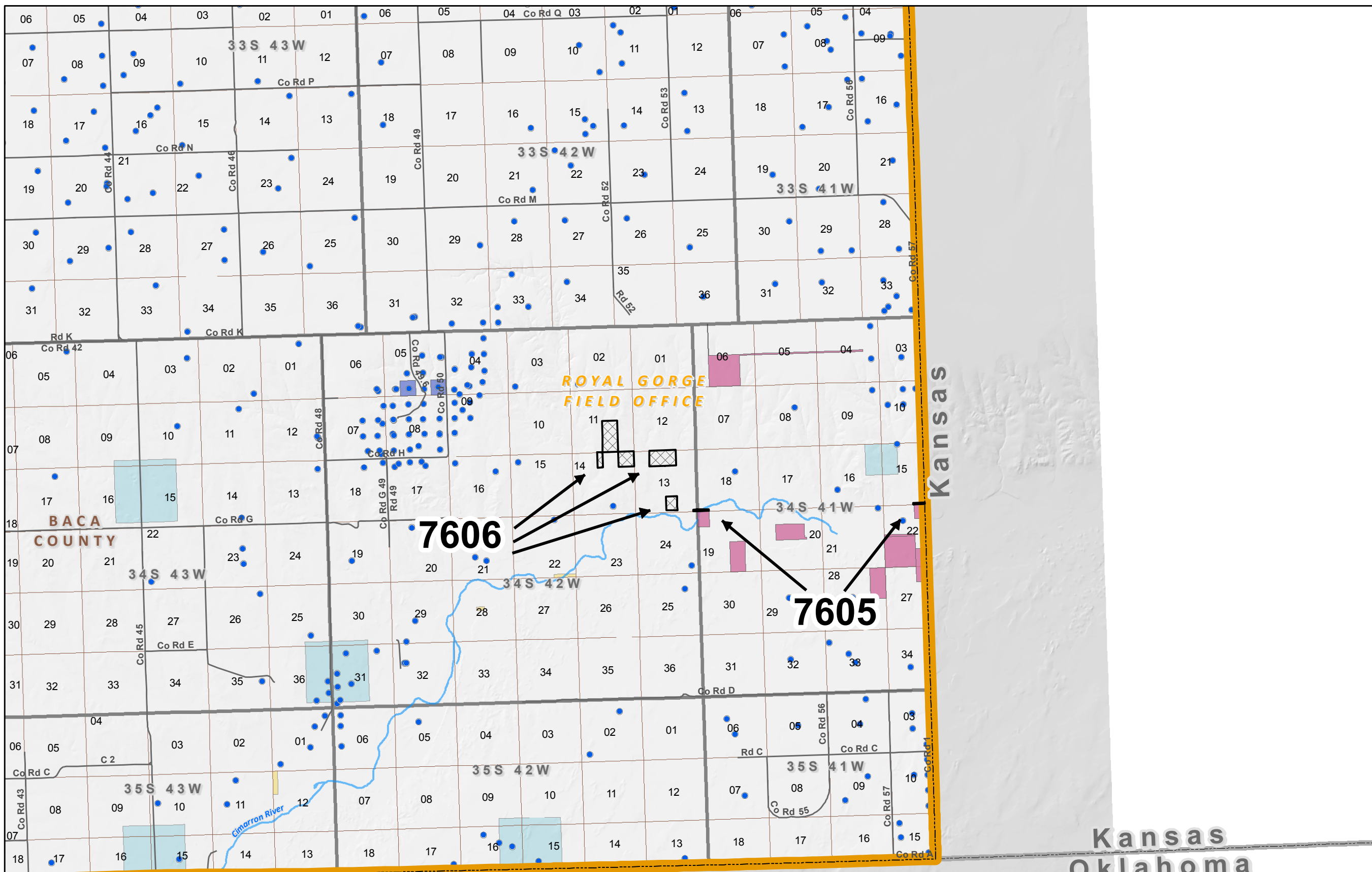
**Map Page Location
Page Number 10**

ROYAL GORGE FIELD OFFICE





NOTE TO MAP USERS
No warrantee is made by the Bureau of Land Management as to the accuracy, reliability, or completeness of the data layers shown on this map. The official land records should be checked for the current status on any specific tract of land.



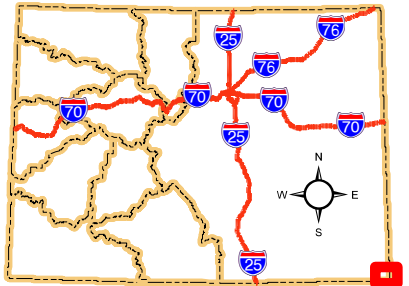
Legend

- BLM Field Office Areas Boundaries
- Lease Parcels**
- Status**
- Deferral
- COGCC Oil and Gas Well Locations
- Oil and Gas Leases**
- Non-Producing Leases
- Producing Leases
- Township & Range
- Sections
- Bureau of Land Management
- Private
- State
- County Boundaries
- Streams
- County & Main Roads



**Map Page Location
Page Number 11**

ROYAL GORGE FIELD OFFICE



Oklahoma

Kansas
Oklahoma