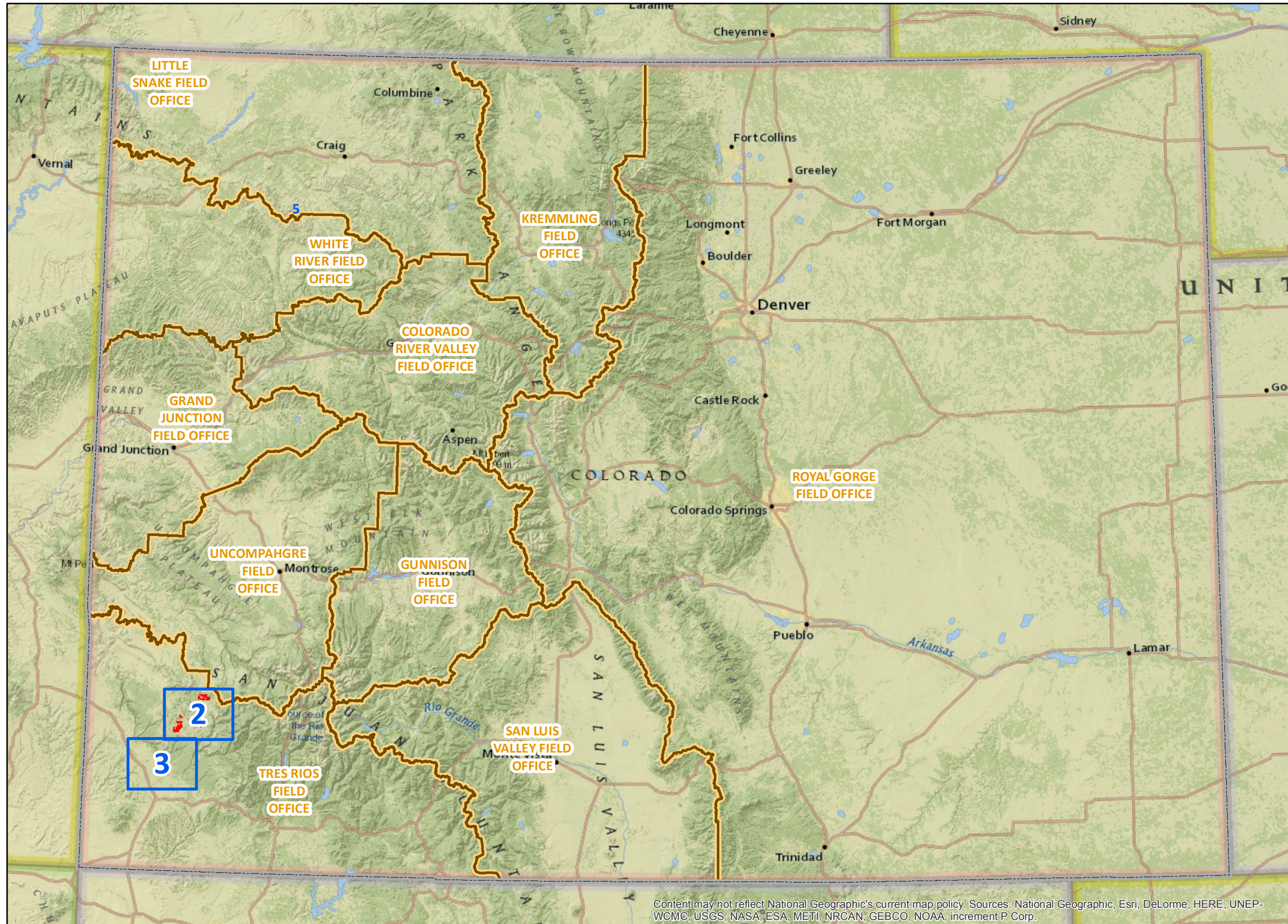


BLM Competitive Oil and Gas Lease Sale February, 2016



Legend

- Parcels
- Detailed Map View Pages
- State Boundary
- BLM Field Office Boundaries

Please click on the Close Up Map Pages to see more detail.

3

3 / 11

Click on the Page Navigation Tools to return to this Index map on Page 1.

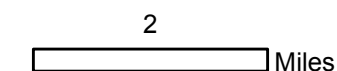
Content may not reflect National Geographic's current map policy. Sources: National Geographic, Esri, DeLorme, HERE, UNEP-WCMC, USGS, NASA, ESA, METI, NRCAN, GEBCO, NOAA, increment P Corp.



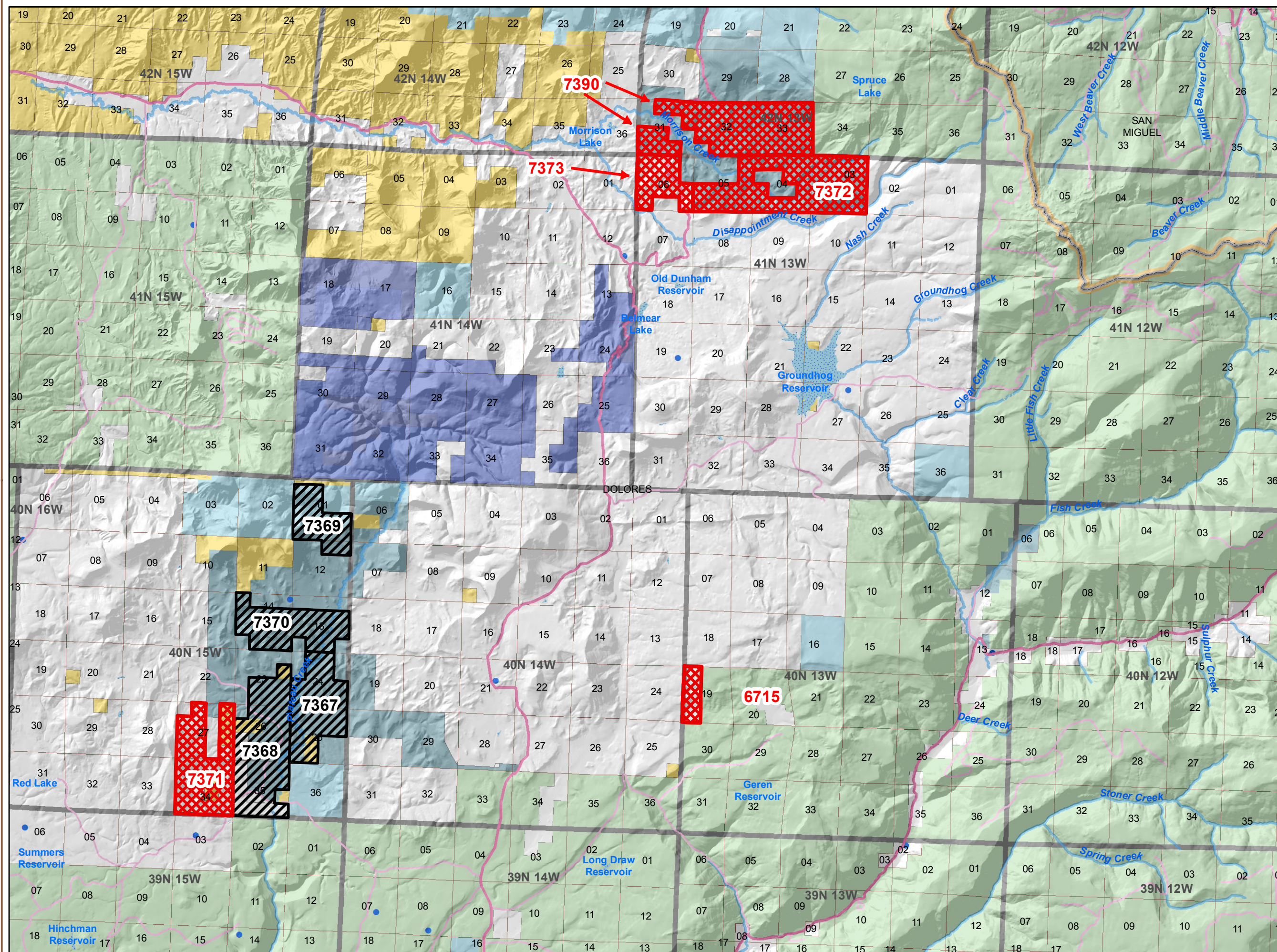
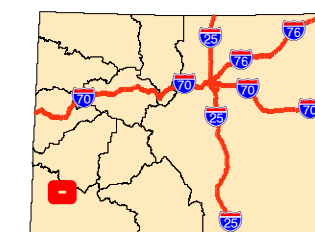
NOTE TO MAP USERS
No warrantee is made by the Bureau of Land Management as to the accuracy, reliability, or completeness of the data layers shown on this map. The official land records should be checked for the current status on any specific tract of land.

Legend

- BLM Field Office Boundaries
- Lease Sale Parcels**
- Recommended Oil & Gas Sale Status**
- Deferral
- Sale
- COGCC Oil and Gas Well Locations
- Oil and Gas Leases**
- Non-Producing Leases
- Bureau of Land Management
- Other Federal
- Private
- State
- State, County, City; Areas
- US Forest Service
- Township & Range
- Sections
- Lakes and Reservoirs
- CDOT Local Roads
- Streams



Map Page Location
Page Number 2
TRES RIOS FIELD OFFICE

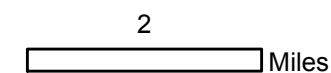




NOTE TO MAP USERS
No warrantee is made by the Bureau of Land Management as to the accuracy, reliability, or completeness of the data layers shown on this map. The official land records should be checked for the current status on any specific tract of land.

Legend

- BLM Field Office Boundaries
- Lease Sale Parcels**
- Recommended Oil & Gas Sale Status**
- Sale
- COGCC Oil and Gas Well Locations
- Oil and Gas Leases**
- Non-Producing Leases
- Producing Leases
- Bureau of Land Management
- Bureau of Reclamation
- National Park Service
- Private
- State
- State, County, City; Areas
- US Forest Service
- Township & Range
- Sections
- Lakes and Reservoirs
- Minor Highways
- CDOT Local Roads
- Streams



Map Page Location
Page Number 3
TRES RIOS FIELD OFFICE

