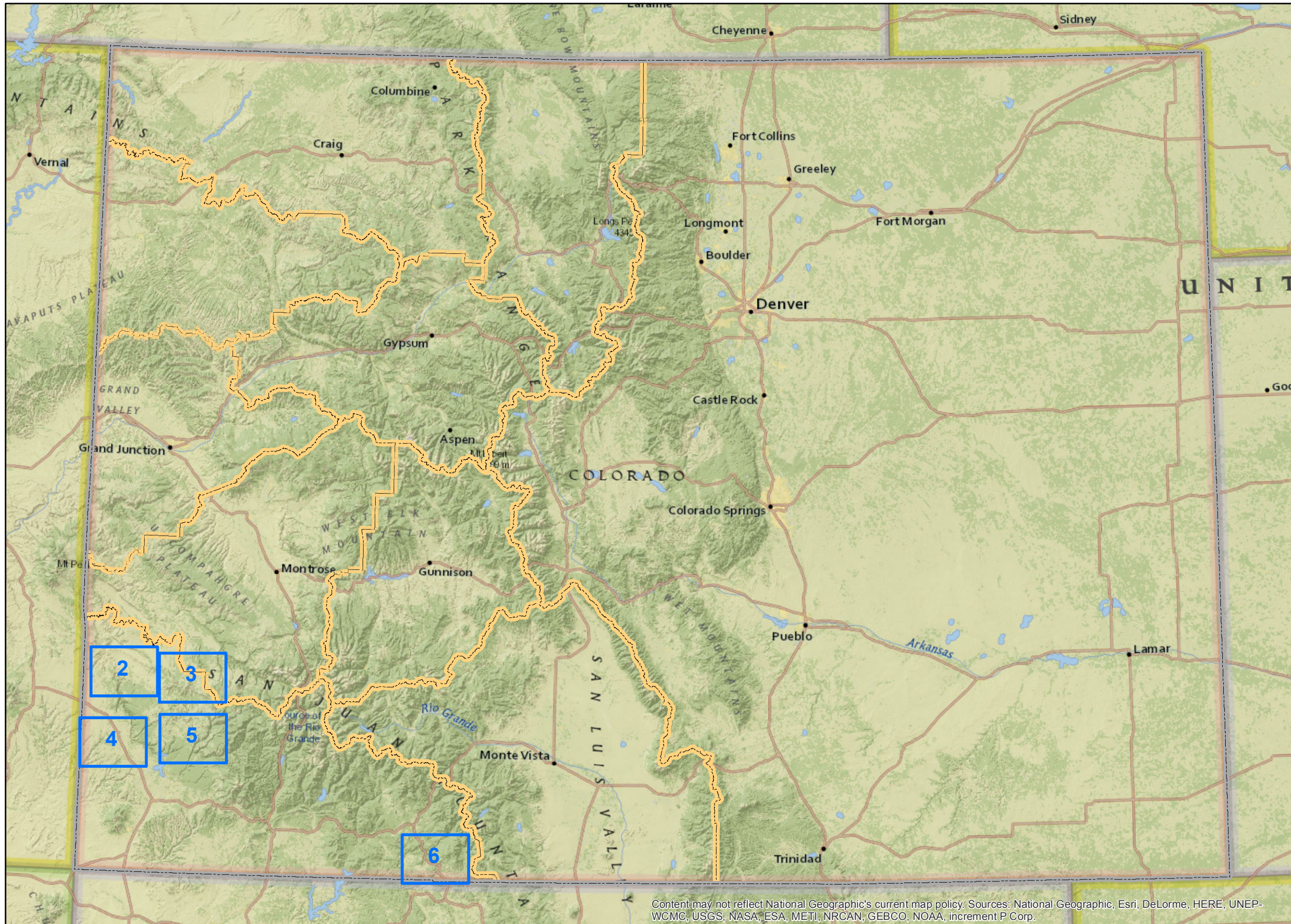


BLM Competitive Oil and Gas Lease Sale February, 2017



Legend

- Selectable Map Pages
- State Boundary
- BLM Field Office Boundaries

Please click on the Close Up Map Pages to see more detail.

Click on the Page Navigation Tools to return to this Index map on Page 1.

Content may not reflect National Geographic's current map policy. Sources: National Geographic, Esri, DeLorme, HERE, UNEP-WCMC, USGS, NASA, ESA, METI, NRCAN, GEBCO, NOAA, increment P Corp.

**Bureau of Land Management
Competitive Oil & Gas Lease Sale
February, 2017**



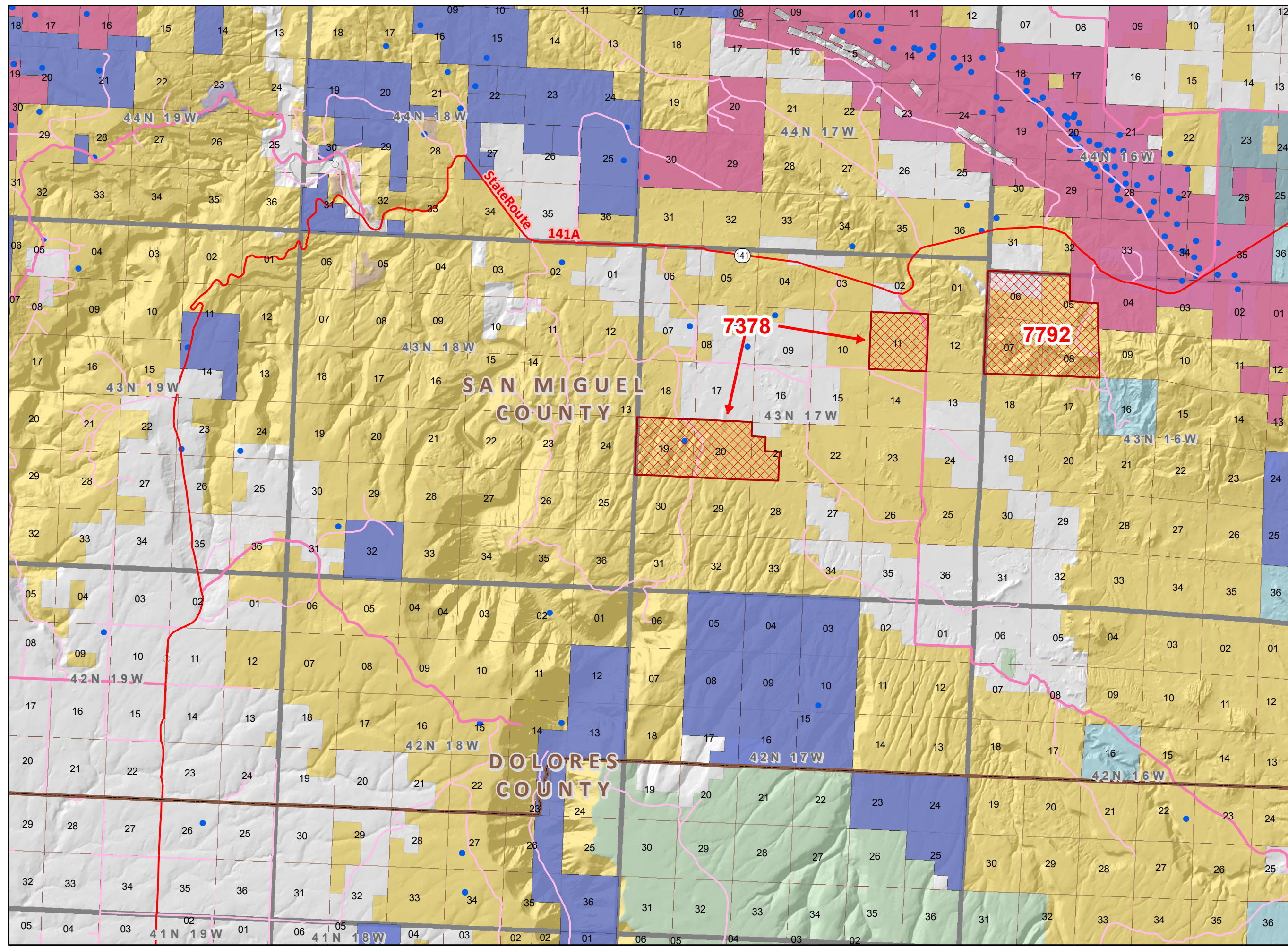
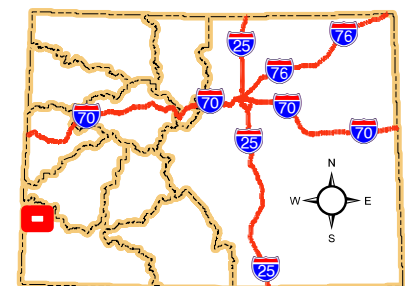
NOTE TO MAP USERS
No warrantee is made by the Bureau of Land Management as to the accuracy, reliability, or completeness of the data layers shown on this map. The official land records should be checked for the current status on any specific tract of land.

Legend

- BLM Field Office Areas Boundaries
- Lease Parcels**
- Oil & Gas Sale Status**
- Sale
- COGCC Oil and Gas Well Locations
- Oil and Gas Leases**
- Non-Producing Leases
- Producing Leases
- County Boundaries
- Township & Range
- Sections
- Bureau of Land Management
- National Park Service
- Other Federal
- Private
- State
- State, County, City; Areas
- US Forest Service
- Lakes and Reservoirs
- Minor Highways
- CDOT Local Roads
- Other Cities and Towns



Map Page Location
Page Number 2
TRES RIOS FIELD OFFICE





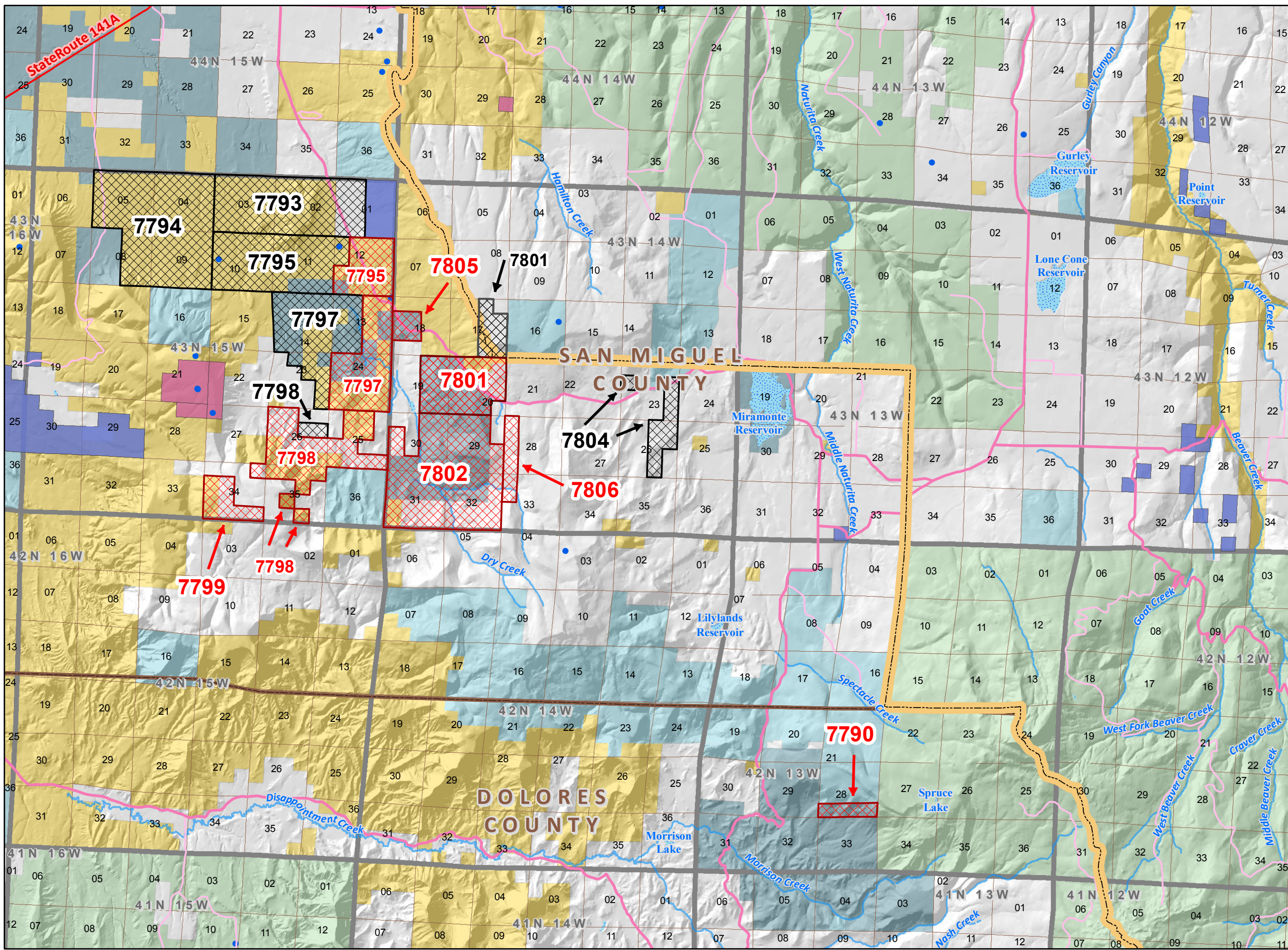
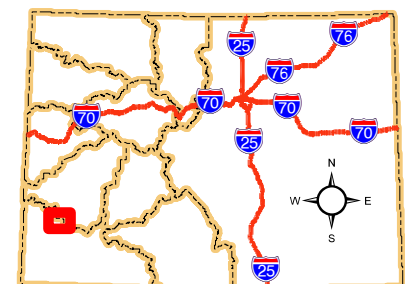
NOTE TO MAP USERS
No warrant is made by the Bureau of Land Management as to the accuracy, reliability, or completeness of the data layers shown on this map. The official land records should be checked for the current status on any specific tract of land.

Legend

- BLM Field Office Areas Boundaries
- Lease Parcels**
- Oil & Gas Sale Status**
- Deferral
- Sale
- COGCC Oil and Gas Well Locations
- Oil and Gas Leases**
- Non-Producing Leases
- Producing Leases
- County Boundaries
- Township & Range
- Sections
- Bureau of Land Management
- Private
- State
- State, County, City; Areas
- US Forest Service
- Lakes and Reservoirs
- Minor Highways
- CDOT Local Roads
- Streams

0 0.5 1 2 Miles

Map Page Location
Page Number 3
TRES RIOS FIELD OFFICE



**Bureau of Land Management
Competitive Oil & Gas Lease Sale
February, 2017**



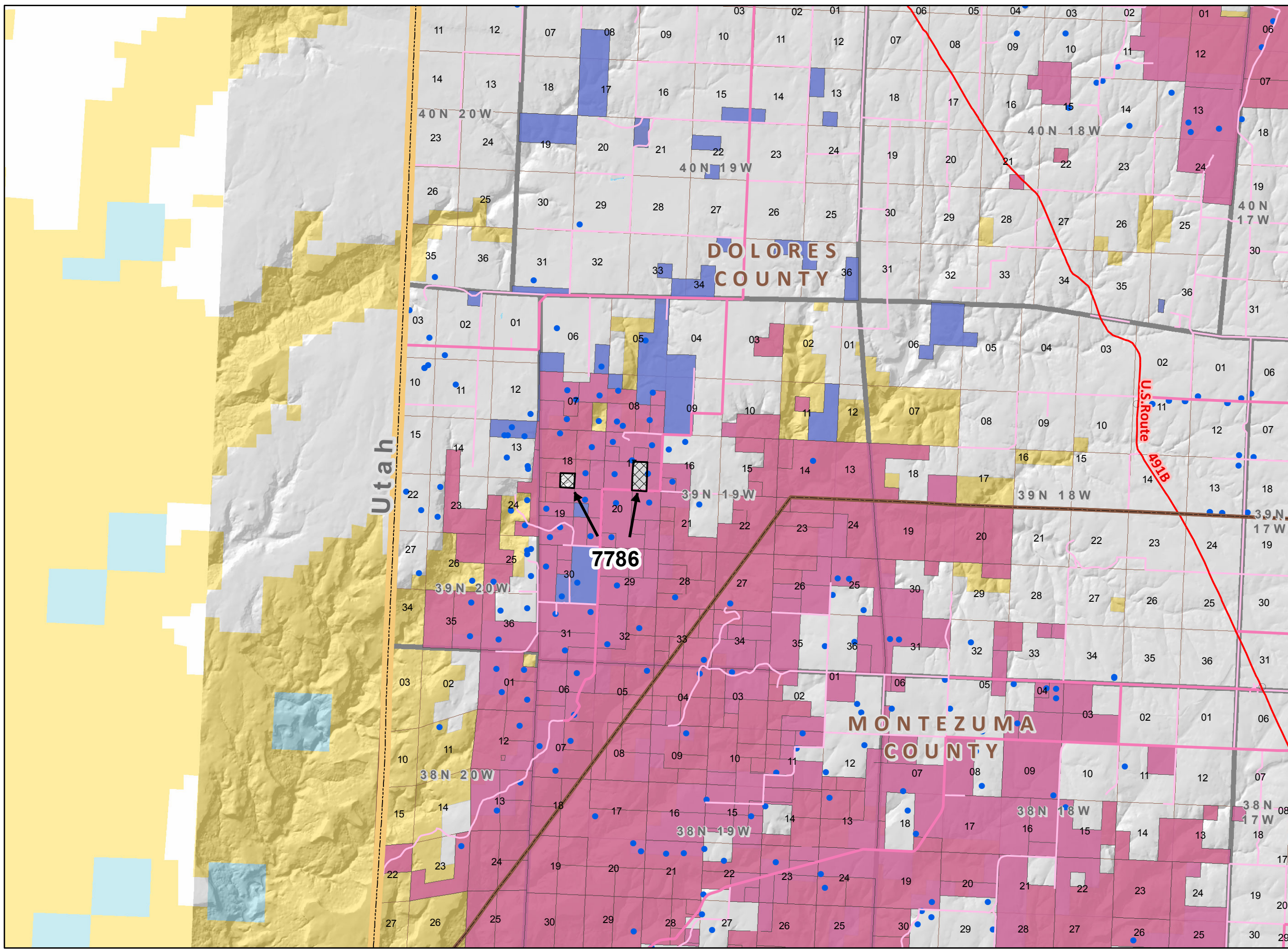
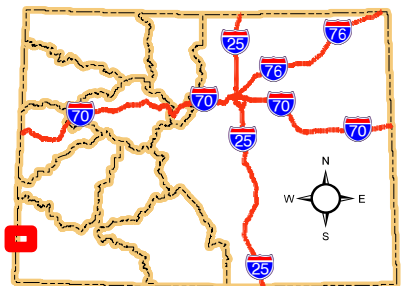
NOTE TO MAP USERS
No warrantee is made by the Bureau of Land Management as to the accuracy, reliability, or completeness of the data layers shown on this map. The official land records should be checked for the current status on any specific tract of land.

Legend

- BLM Field Office Areas Boundaries
- Lease Parcels**
- Oil & Gas Sale Status**
- Deferral
- COGCC Oil and Gas Well Locations
- Oil and Gas Leases**
- Non-Producing Leases
- Producing Leases
- County Boundaries
- Township & Range
- Sections
- Bureau of Land Management
- Private
- Lakes and Reservoirs
- Minor Highways
- CDOT Local Roads
- USA State Boundaries
- Other Cities and Towns



Map Page Location
Page Number 4
TRES RIOS FIELD OFFICE



**Bureau of Land Management
Competitive Oil & Gas Lease Sale
February, 2017**



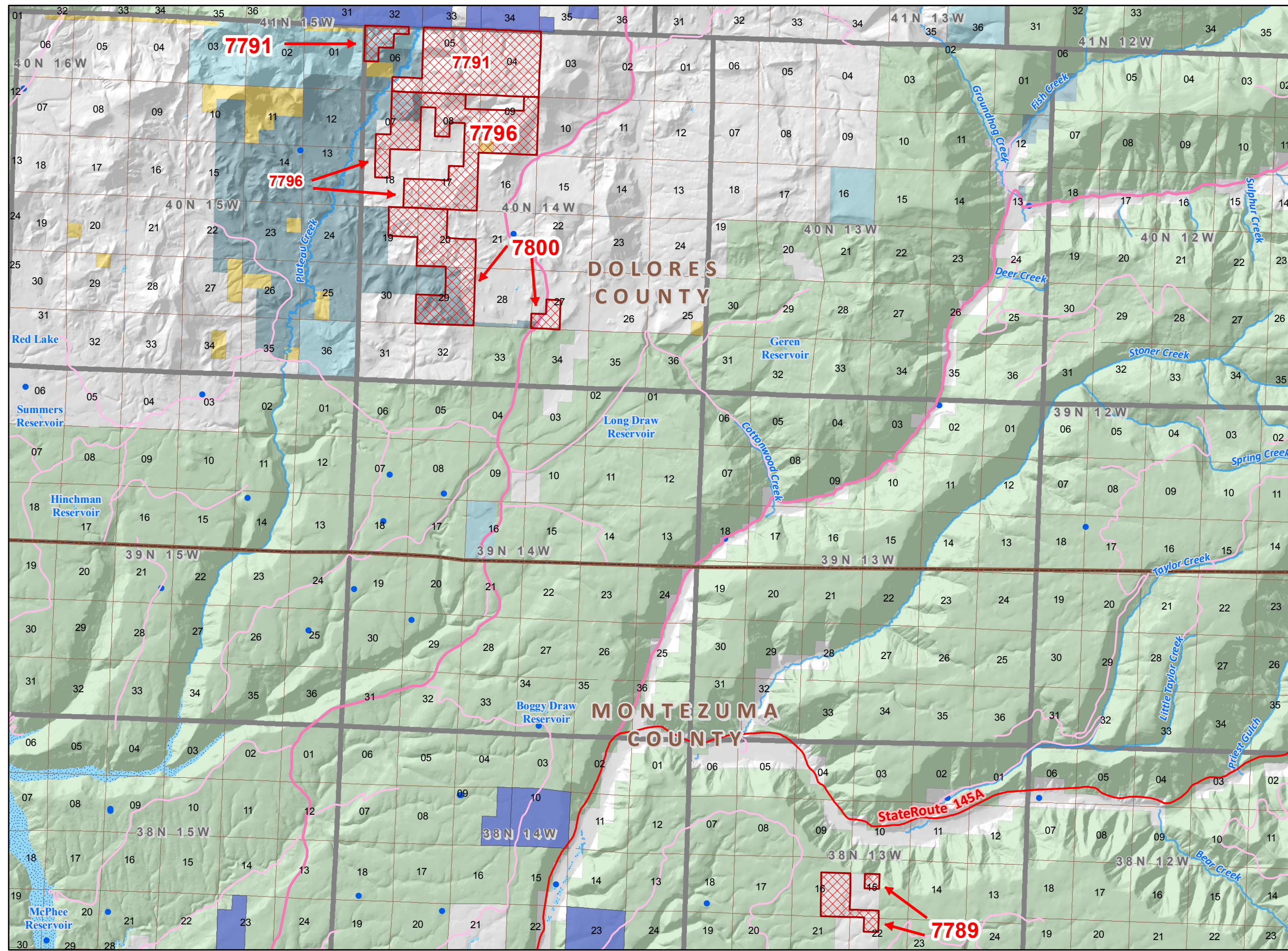
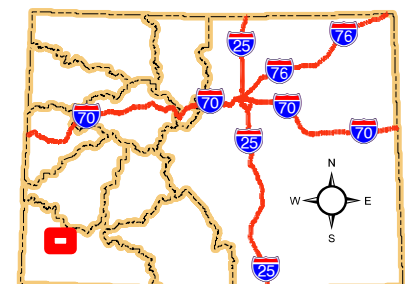
NOTE TO MAP USERS
No warrant is made by the Bureau of Land Management as to the accuracy, reliability, or completeness of the data layers shown on this map. The official land records should be checked for the current status on any specific tract of land.

Legend

- BLM Field Office Areas Boundaries
- Lease Parcels**
- Oil & Gas Sale Status**
- Sale
- COGCC Oil and Gas Well Locations
- Oil and Gas Leases**
- Non-Producing Leases
- County Boundaries
- Township & Range
- Sections
- Bureau of Land Management
- Other Federal
- Private
- State
- State, County, City; Areas
- US Forest Service
- Lakes and Reservoirs
- Minor Highways
- CDOT Local Roads
- Streams
- Other Cities and Towns



Map Page Location
Page Number 5
TRES RIOS FIELD OFFICE



**Bureau of Land Management
Competitive Oil & Gas Lease Sale
February, 2017**



NOTE TO MAP USERS
No warrantee is made by the Bureau of Land Management as to the accuracy, reliability, or completeness of the data layers shown on this map. The official land records should be checked for the current status on any specific tract of land.

Legend

- BLM Field Office Areas Boundaries
- Lease Parcels**
- Oil & Gas Sale Status**
- Sale
- COGCC Oil and Gas Well Locations
- Oil and Gas Leases**
- Non-Producing Leases
- County Boundaries
- Township & Range
- Sections
- Bureau of Land Management
- Indian Reservation
- Private
- State
- State, County, City; Areas
- US Forest Service
- Lakes and Reservoirs
- Minor Highways
- CDOT Local Roads
- Streams
- USA State Boundaries
- Other Cities and Towns



Map Page Location
Page Number 6
TRES RIOS FIELD OFFICE

