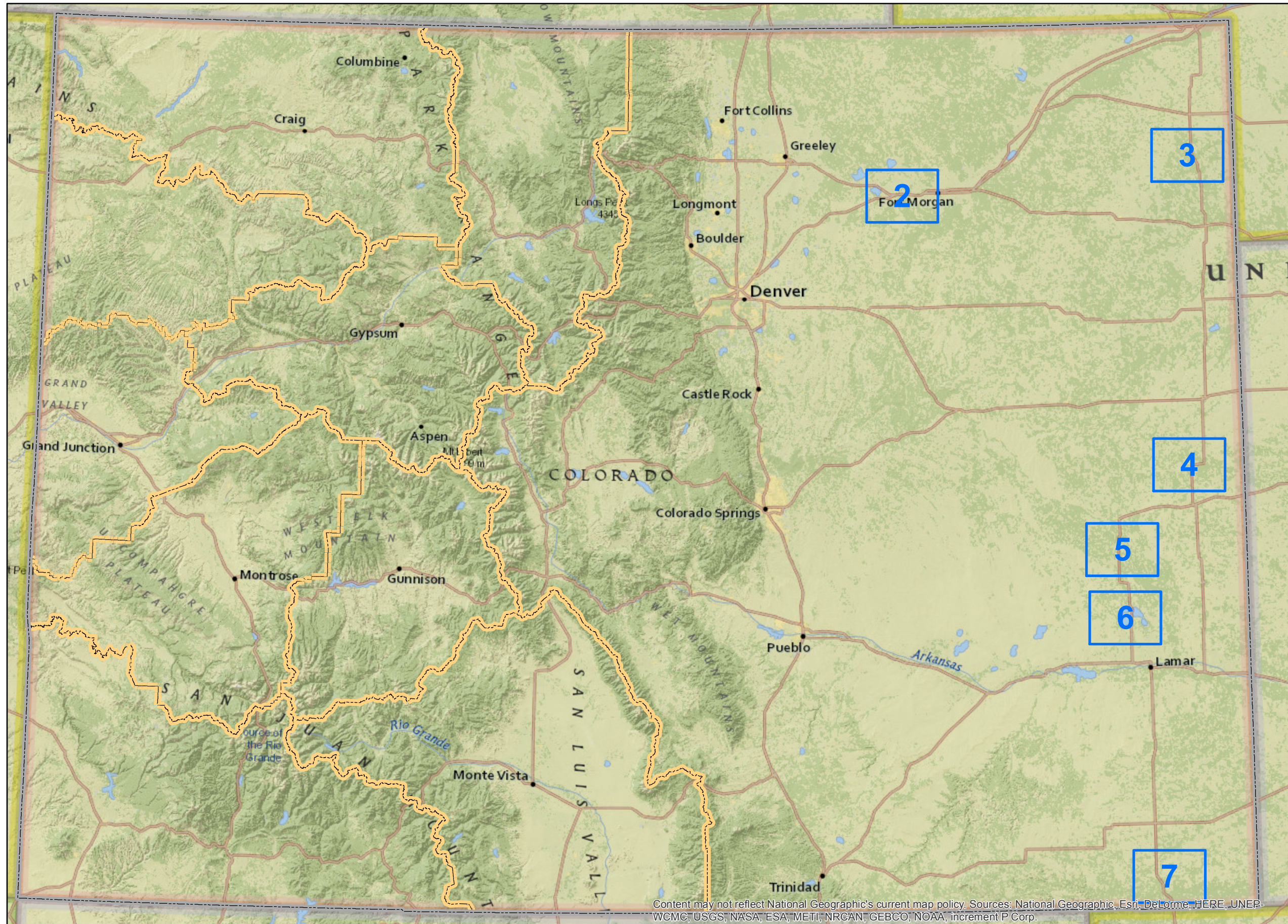


# BLM Competitive Oil and Gas Lease Sale August, 2017



**Legend**

- Selectable Map Pages
- State Boundary
- BLM Field Office Boundaries

Please click on the Close Up Map Pages to see more detail.

3 / 11

Click on the Page Navigation Tools to return to this Index map on Page 1.

Content may not reflect National Geographic's current map policy. Sources: National Geographic, Esri, DeLorme, HERE, UNEP-WCMC, USGS, NASA, ESA, METI, NRCAN, GEBCO, NOAA, increment P Corp.

**Bureau of Land Management  
Competitive Oil & Gas Lease Sale  
August, 2017**



**NOTE TO MAP USERS**  
No warrantee is made by the Bureau of Land Management as to the accuracy, reliability, or completeness of the data layers shown on this map. The official land records should be checked for the current status on any specific tract of land.

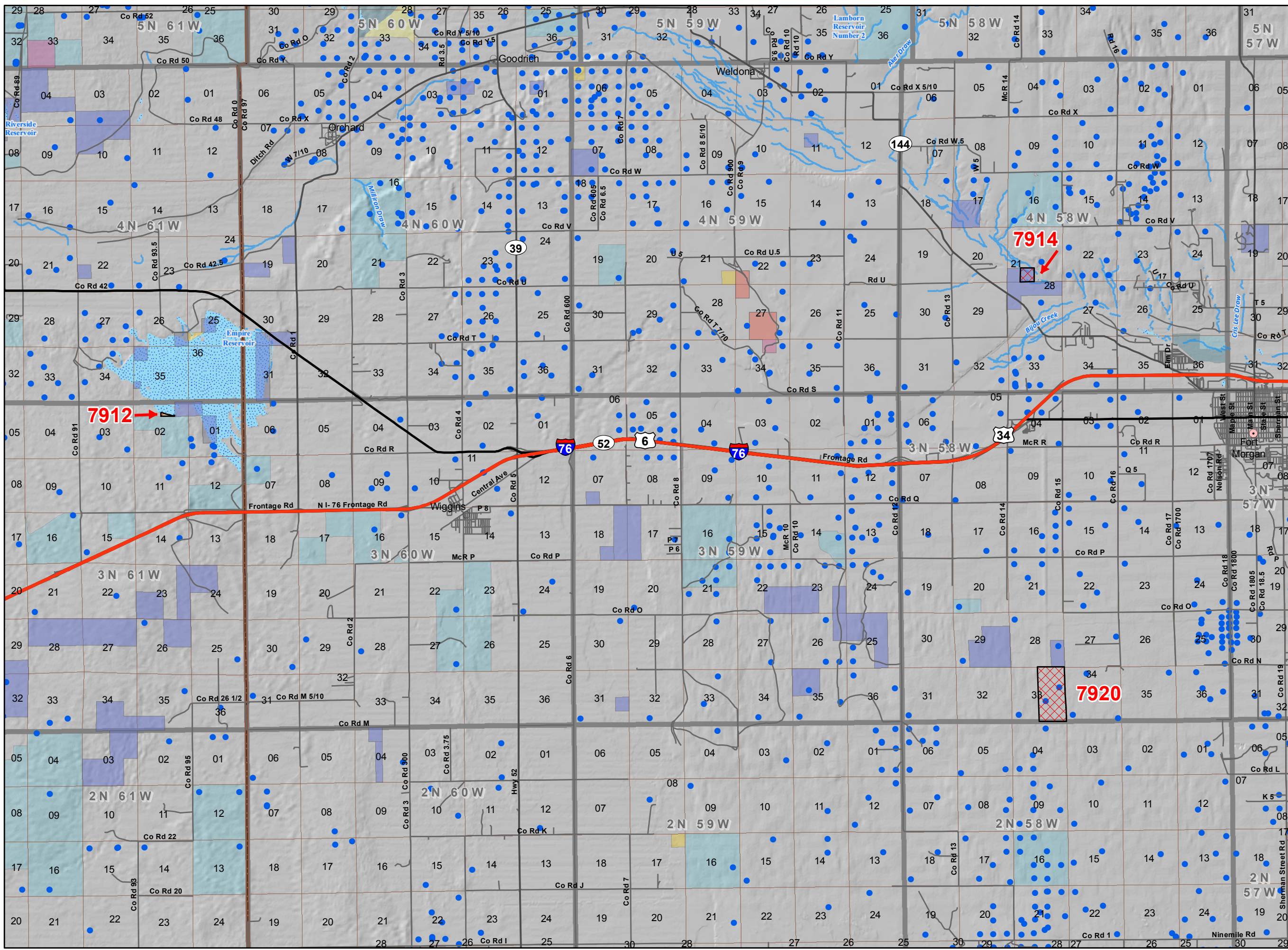
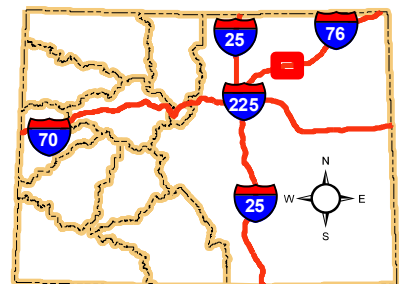
**Legend**

- BLM Field Office Areas Boundaries
- County Boundaries
- Oil & Gas Sale Recommended Status**
- Sale
- COGCC Oil and Gas Well Locations
- Oil and Gas Leases**
- Non-Producing Leases
- Producing Leases
- Township & Range
- Sections
- Bureau of Land Management
- Bureau of Reclamation
- Private
- State
- State, County, City; Areas
- Lakes and Reservoirs
- Streams
- Interstates
- U.S. Highway
- State Highway
- County & Main Roads
- County Seats
- Other Cities and Towns



**Map Page Location  
Page Number 2**

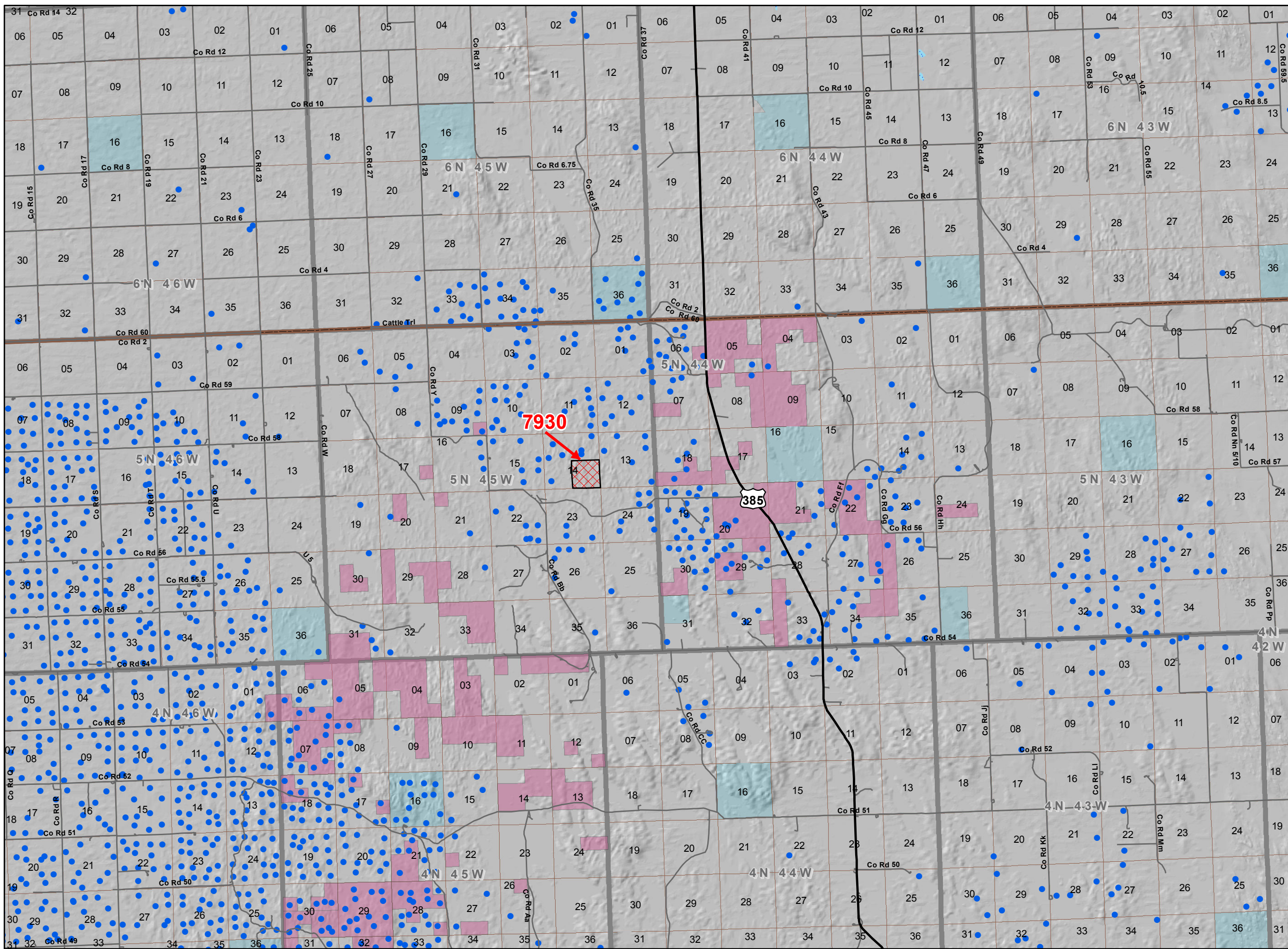
**ROYAL GORGE FIELD OFFICE**



**Bureau of Land Management  
Competitive Oil & Gas Lease Sale  
August, 2017**



**NOTE TO MAP USERS**  
No warrantee is made by the Bureau of Land Management as to the accuracy, reliability, or completeness of the data layers shown on this map. The official land records should be checked for the current status on any specific tract of land.



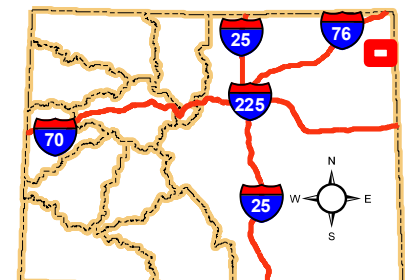
**Legend**

- BLM Field Office Areas Boundaries
- County Boundaries
- Oil & Gas Sale Recommended Status**
- Sale
- COGCC Oil and Gas Well Locations
- Oil and Gas Leases**
- Producing Leases
- Township & Range
- Sections
- Private
- State
- Lakes and Reservoirs
- U.S. Highway
- County & Main Roads



**Map Page Location  
Page Number 3**

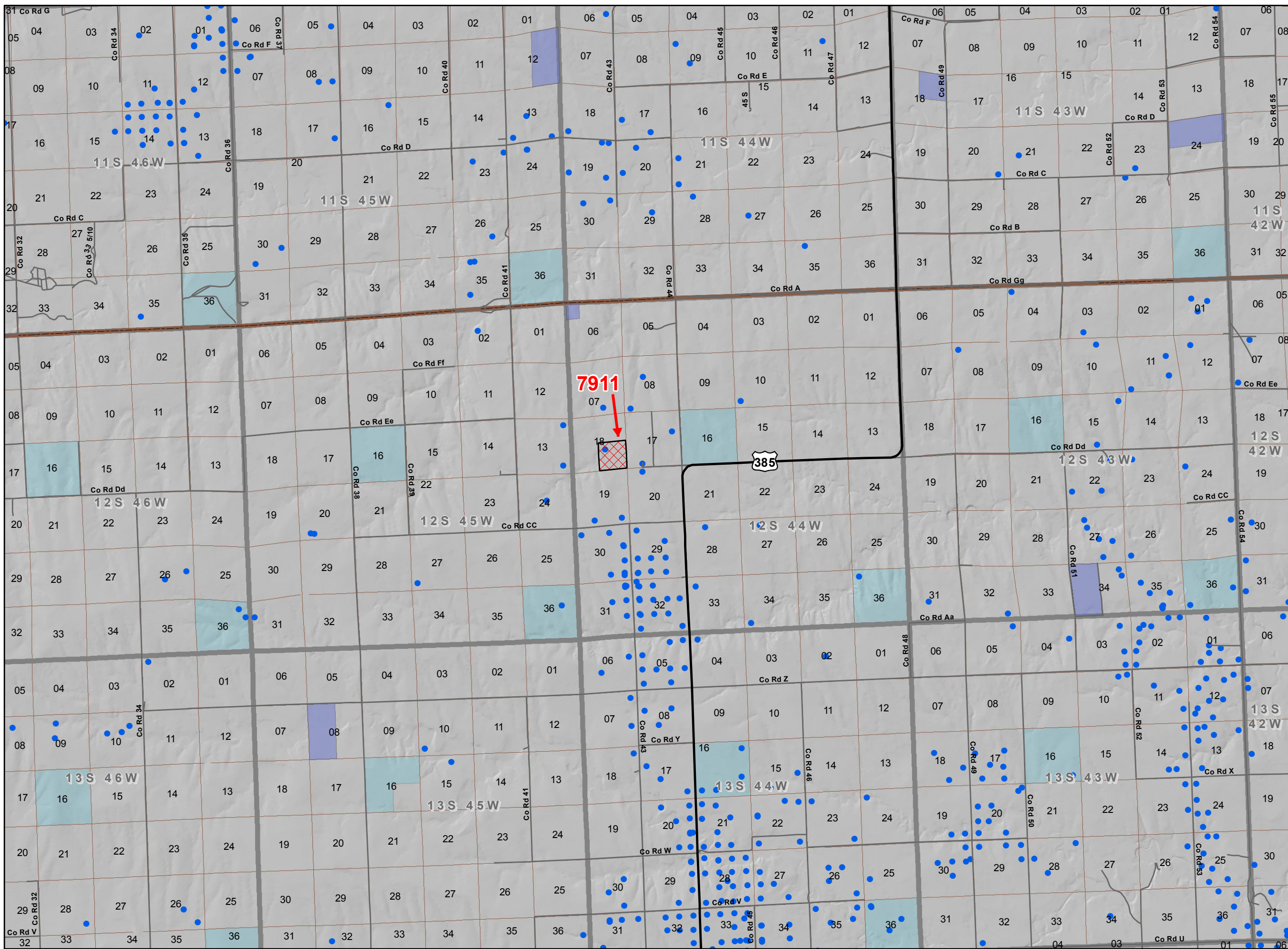
**ROYAL GORGE FIELD OFFICE**



**Bureau of Land Management  
Competitive Oil & Gas Lease Sale  
August, 2017**



**NOTE TO MAP USERS**  
No warrantee is made by the Bureau of Land Management as to the accuracy, reliability, or completeness of the data layers shown on this map. The official land records should be checked for the current status on any specific tract of land.



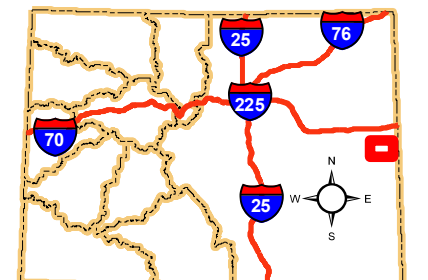
**Legend**

- BLM Field Office Areas Boundaries
- County Boundaries
- Oil & Gas Sale Recommended Status**
- Sale
- COGCC Oil and Gas Well Locations
- Oil and Gas Leases**
- Non-Producing Leases
- Township & Range
- Sections
- Private
- State
- U.S. Highway
- County & Main Roads



**Map Page Location  
Page Number 4**

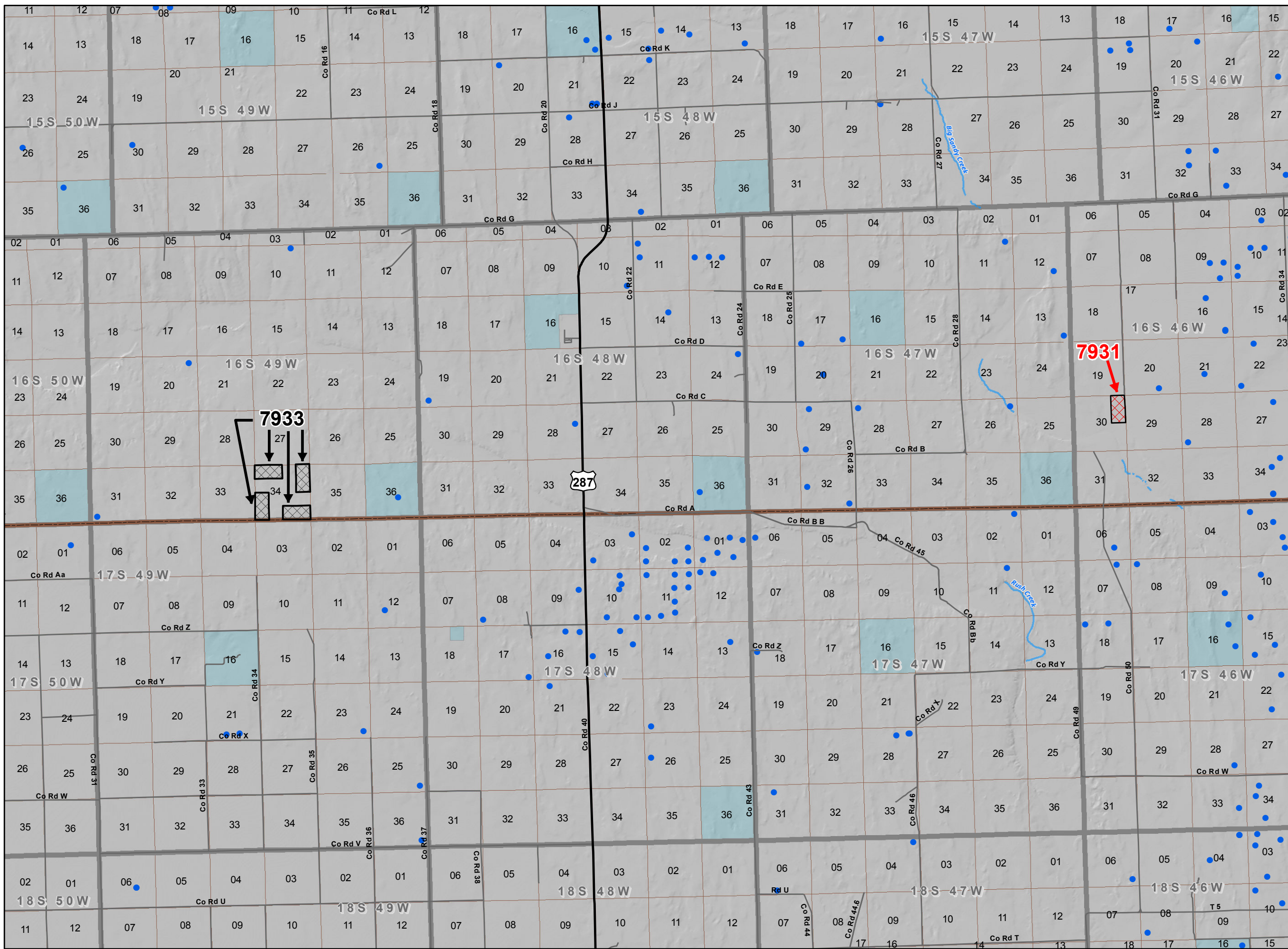
**ROYAL GORGE FIELD OFFICE**



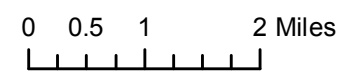
**Bureau of Land Management  
Competitive Oil & Gas Lease Sale  
August, 2017**



**NOTE TO MAP USERS**  
No warrantee is made by the Bureau of Land Management as to the accuracy, reliability, or completeness of the data layers shown on this map. The official land records should be checked for the current status on any specific tract of land.

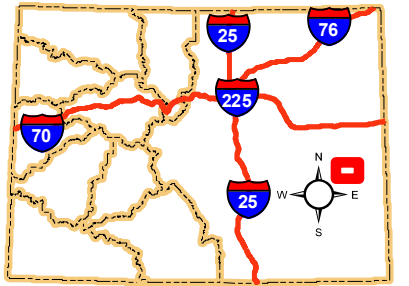


- Legend**
- BLM Field Office Areas Boundaries
  - County Boundaries
  - Oil & Gas Sale Recommended Status**
    - Sale
    - Deferral
  - COGCC Oil and Gas Well Locations
  - Township & Range
  - Sections
  - Private
  - State
  - Streams
  - U.S. Highway
  - County & Main Roads



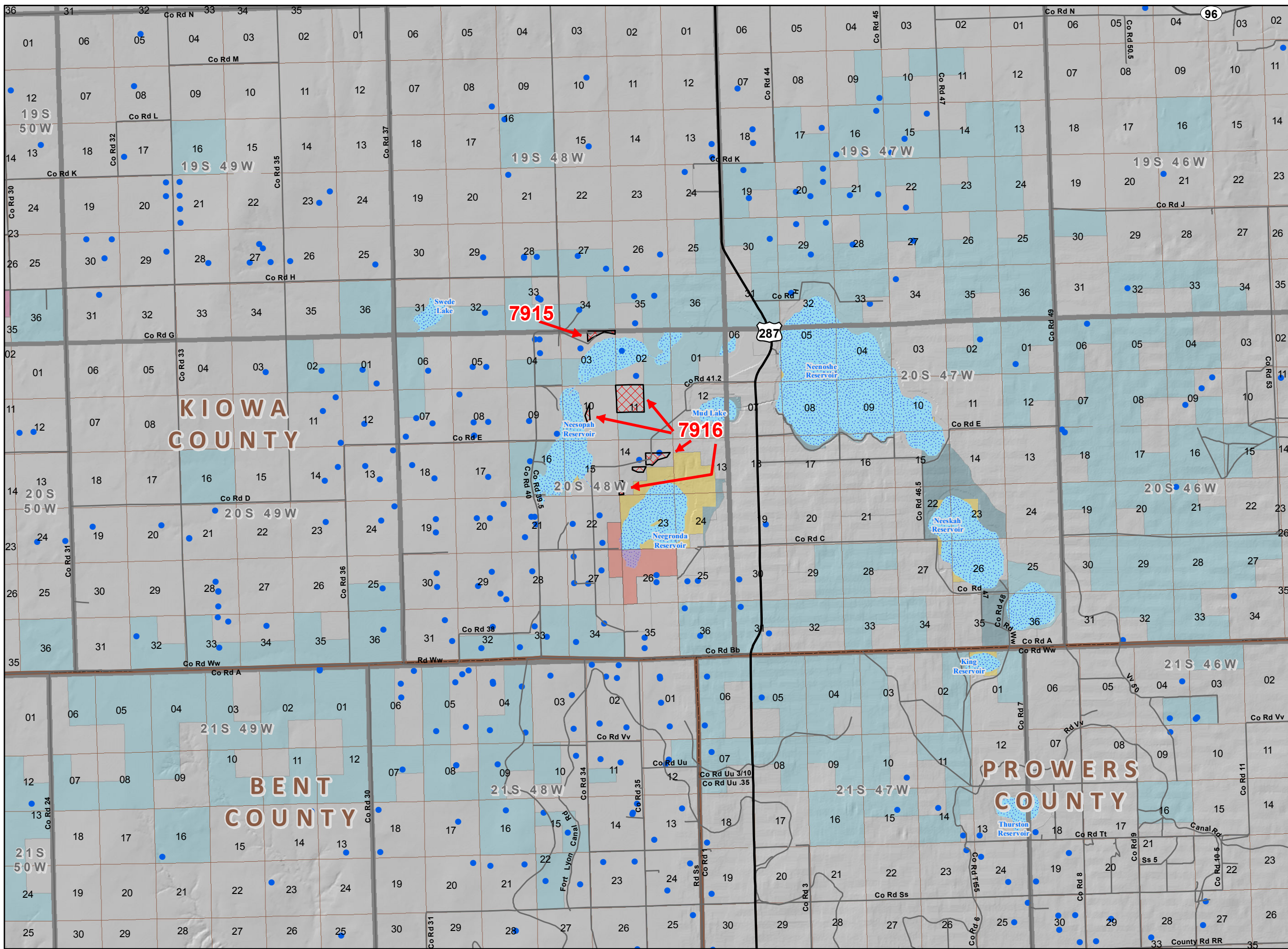
**Map Page Location  
Page Number 5**

**ROYAL GORGE FIELD OFFICE**



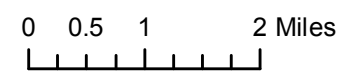


**NOTE TO MAP USERS**  
No warrantee is made by the Bureau of Land Management as to the accuracy, reliability, or completeness of the data layers shown on this map. The official land records should be checked for the current status on any specific tract of land.



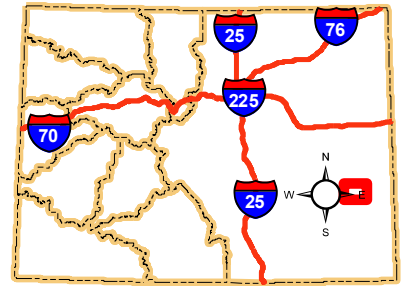
**Legend**

- BLM Field Office Areas Boundaries
- County Boundaries
- Oil & Gas Sale Recommended Status**
- Sale
- COGCC Oil and Gas Well Locations
- Oil and Gas Leases**
- Producing Leases
- Township & Range
- Sections
- Bureau of Land Management
- Private
- State
- State, County, City; Areas
- Lakes and Reservoirs
- U.S. Highway
- State Highway
- County & Main Roads



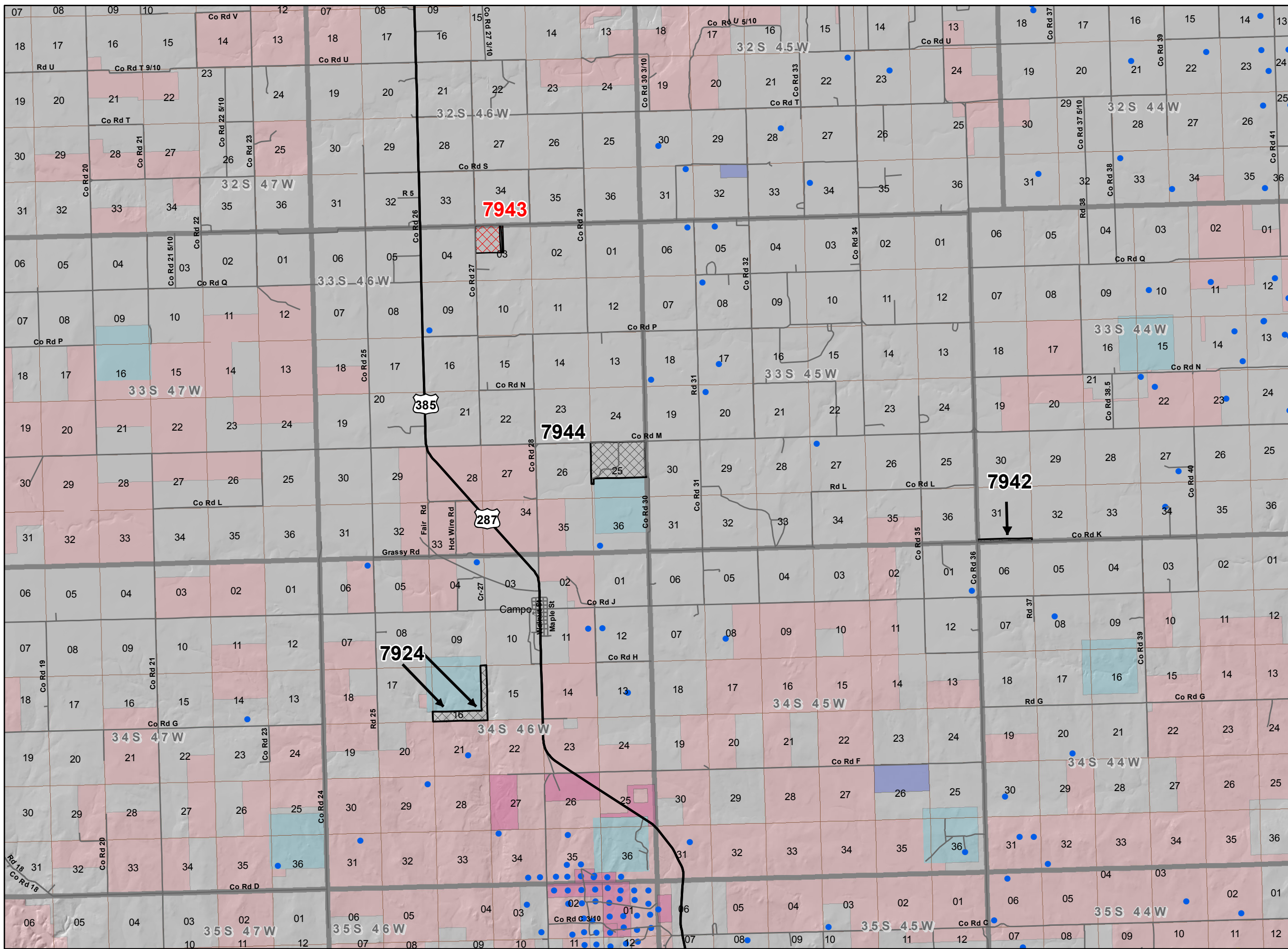
**Map Page Location  
Page Number 6**

**ROYAL GORGE FIELD OFFICE**



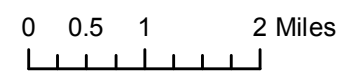


**NOTE TO MAP USERS**  
No warrantee is made by the Bureau of Land Management as to the accuracy, reliability, or completeness of the data layers shown on this map. The official land records should be checked for the current status on any specific tract of land.



**Legend**

- BLM Field Office Areas Boundaries
- County Boundaries
- Oil & Gas Sale Recommended Status**
  - Sale
  - Deferral
- COGCC Oil and Gas Well Locations
- Oil and Gas Leases**
  - Non-Producing Leases
  - Producing Leases
- Township & Range
- Sections
- Bureau of Land Management
- Private
- State
- Bankhead-Jones Land Use Lands
- U.S. Highway
- County & Main Roads
- Other Cities and Towns



**Map Page Location  
Page Number 7**

**ROYAL GORGE FIELD OFFICE**

