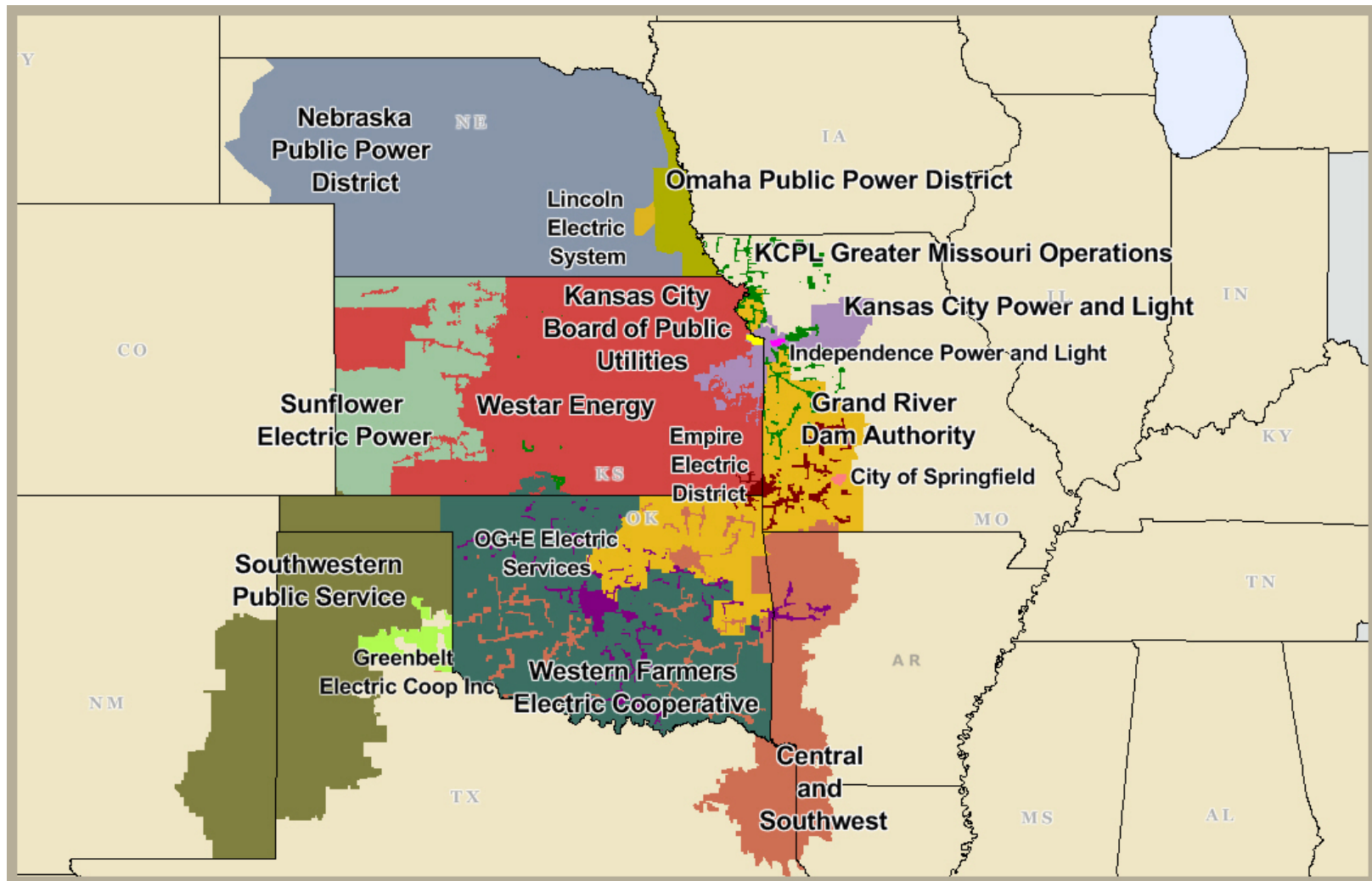


Southwest Power Pool (SPP)



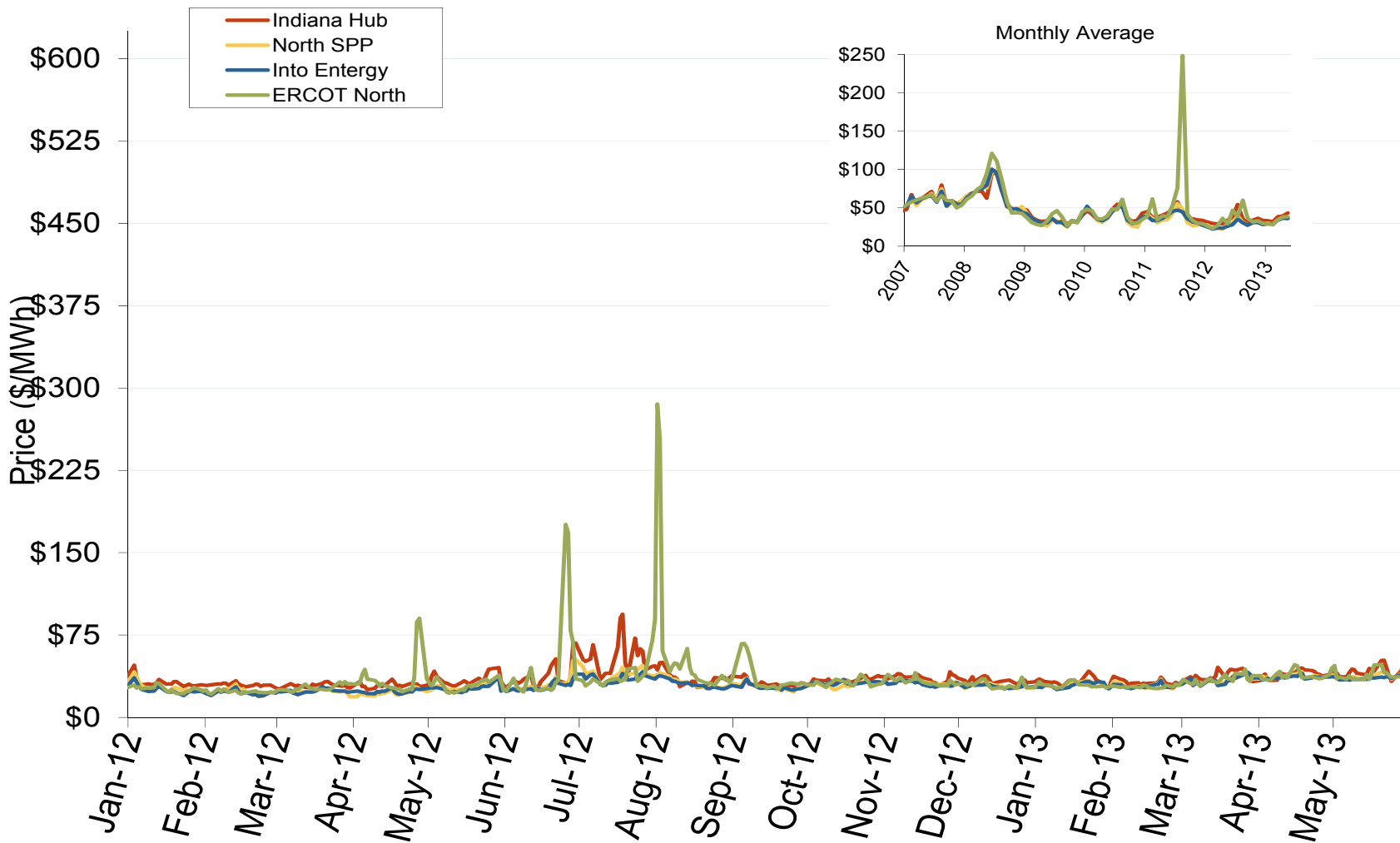
South Central Annual Average Bilateral Prices

| Annual Average Day Ahead On Peak Prices (\$/MWh) | | | | | | |
|--|---------|---------|---------|---------|---------|------------|
| | 2008 | 2009 | 2010 | 2011 | 2012 | 5-Year Avg |
| SPP North | \$68.77 | \$32.94 | \$38.71 | \$36.41 | \$28.76 | \$41.15 |
| ERCOT North | \$73.42 | \$34.89 | \$41.15 | \$61.55 | \$34.99 | \$49.20 |

Southwest Power Pool Electric Market: Central Index Prices

Federal Energy Regulatory Commission • Market Oversight • www.ferc.gov/oversight

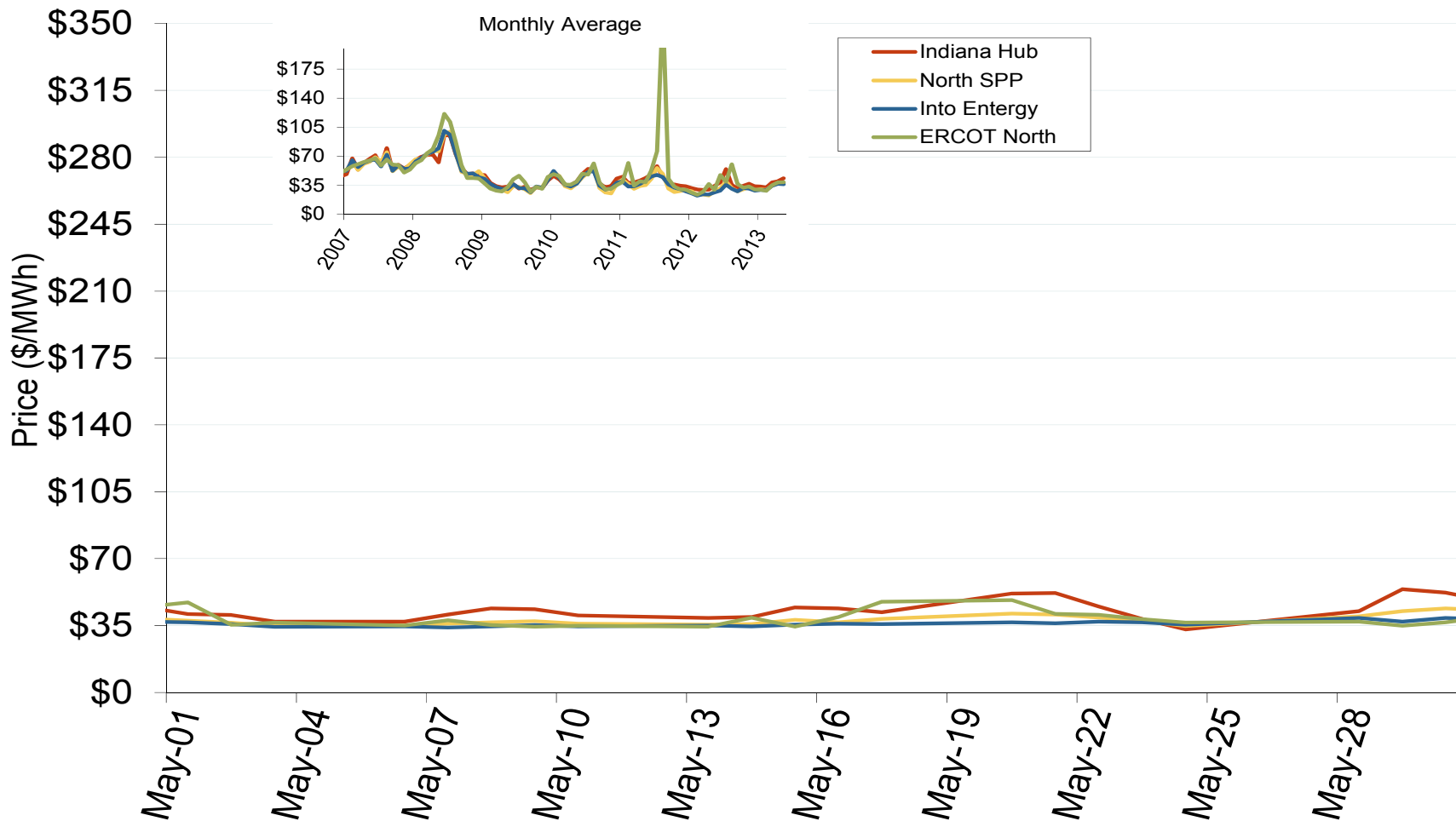
Central Daily Index Day-Ahead On-Peak Prices



Southwest Power Pool Electric Market: Last Month's Central Index Prices

Federal Energy Regulatory Commission • Market Oversight • www.ferc.gov/oversight

Central Daily Index Day-Ahead On-Peak Prices



Weekly Generation Output - South Central

