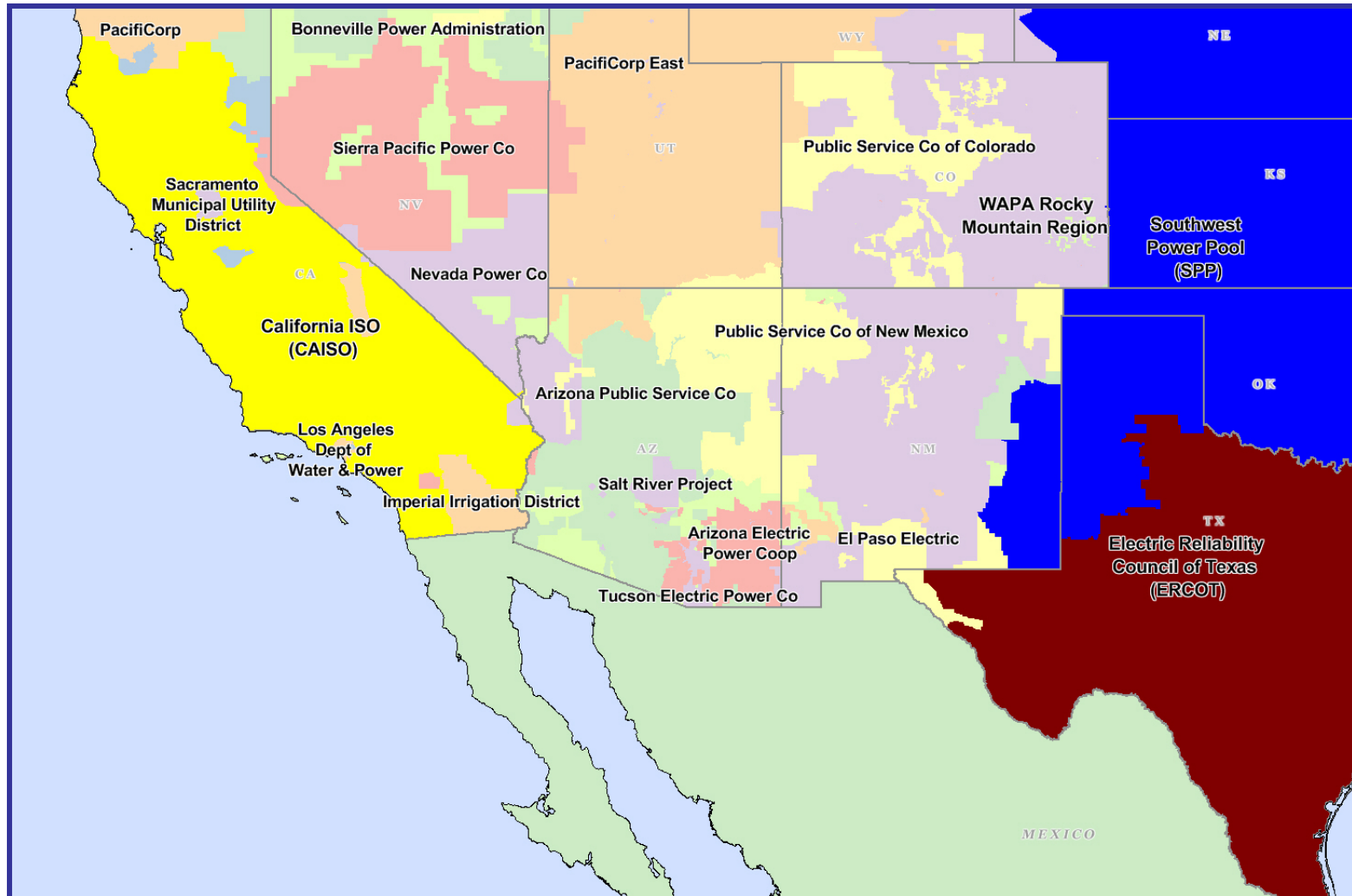


Southwest Electric Regions



Overview

Geography

States covered: All or most of Arizona, New Mexico, Colorado and parts of Nevada, Wyoming and South Dakota.

Reliability region: Rocky Mountain Power Area (RMPA) and Arizona/New Mexico/Southern Nevada Power Area (AZNMSNV) sub-regions of the Western Electric Coordinating Council (WECC)

Balancing authorities: See list on page 5.

Hubs: Four Corners, Mead, Palo Verde

RTO/ISO

None

Demand (Derived from FERC Form 714)

Peak demand: 2007: \$37,589/MWh

Peak demand growth: 2006-2007: 28.2%

Summer peak demand:	2006: \$29,317
	2007: \$37,589
	2008: \$33,873
	2009: \$33,982

Prices

Annual Average of Daily Bilateral Day Ahead On-Peak Prices

ICE On-Peak Palo Verde:	2006: \$57.59/MWh
	2007: \$61.74/MWh
	2008: \$71.22/MWh
	2009: \$35.82/MWh

Interconnections/Seams

Generation suppliers export excess power to the rest of the West and particularly to California.

Balancing Authorities in the Southwest Electric Market

WECC Subregion and Balancing Authority

NERC Acronym

AZNMSNV

Arizona Public Service Company
 DECA, LLC - Arlington Valley
 El Paso Electric Company
 Gila River Maricopa Arizona
 Harquahala L.L.C.
 Imperial Irrigation District
 Nevada Power Company
 Public Service Company of New Mexico
 Salt River Project
 Tucson Electric Power Company
 Western Area Power Administration - Lower Colorado

AZPS
 DEAA
 EPE
 GRMA
 HGMA
 IID
 NEVP
 PNM
 SRP
 TEPC
 WALC

RMPA

Public Service Company of Colorado
 Western Area Power Administration - Colorado-Missouri

PSCO
 WACM

Contact Information

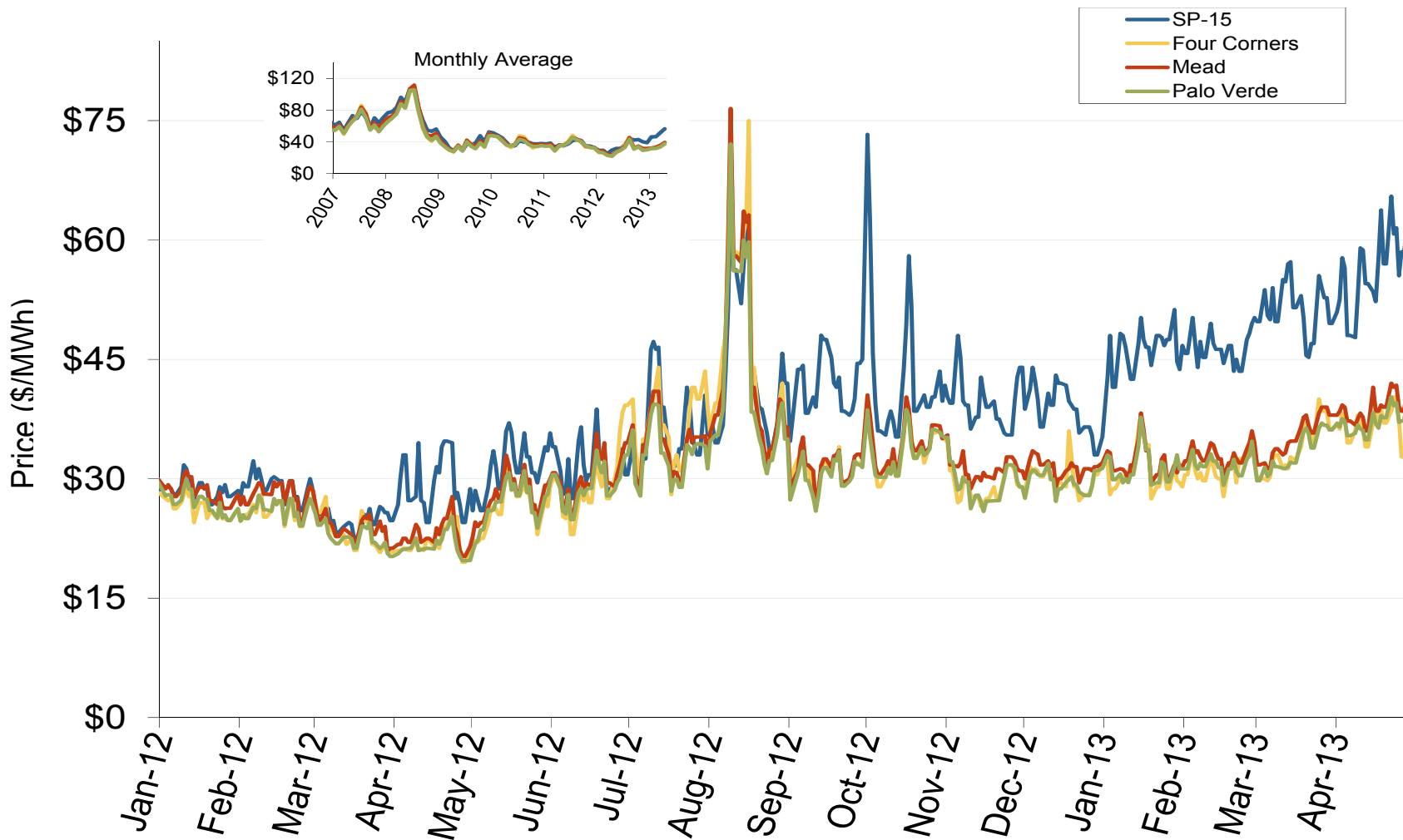
For answers regarding material in the Southwest section, please contact our staff at:

oversight@ferc.gov

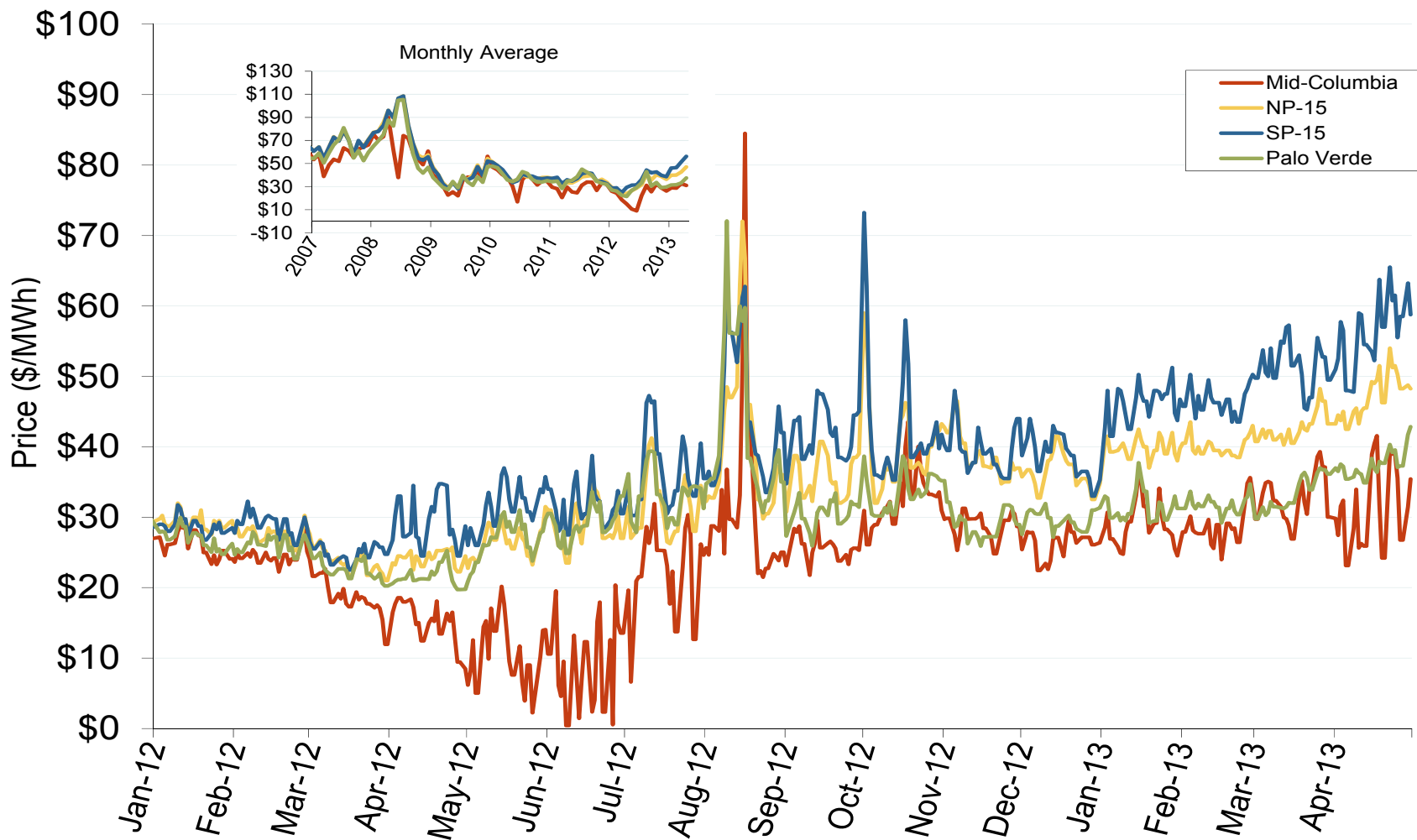
Southwest Annual Average Bilateral Prices

Annual Average Day Ahead On Peak Prices (\$/MWh)						
	2008	2009	2010	2011	2012	5-Year Avg
Four Corners	\$71.84	\$35.38	\$39.68	\$36.34	\$30.10	\$42.69
Palo Verde	\$71.87	\$34.77	\$38.76	\$36.10	\$29.41	\$42.20
Mead	\$75.63	\$36.58	\$40.11	\$36.92	\$30.80	\$44.03

Southwestern Daily Index Day-Ahead On-Peak Prices



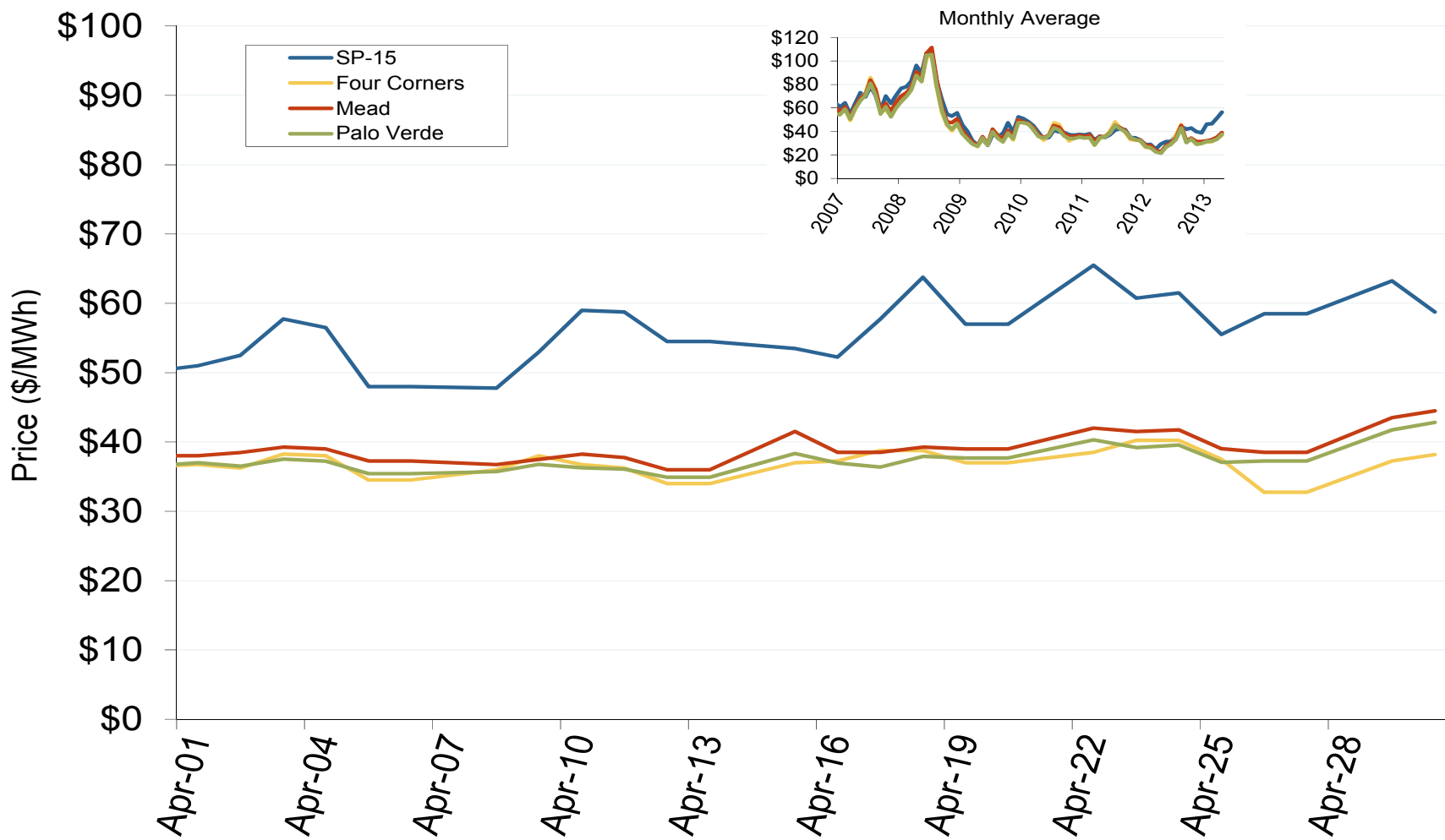
Western Daily Index Day-Ahead On-Peak Prices



Southwest Electric Market: Last Month's Southwestern Index Prices

Federal Energy Regulatory Commission • Market Oversight • www.ferc.gov/oversight

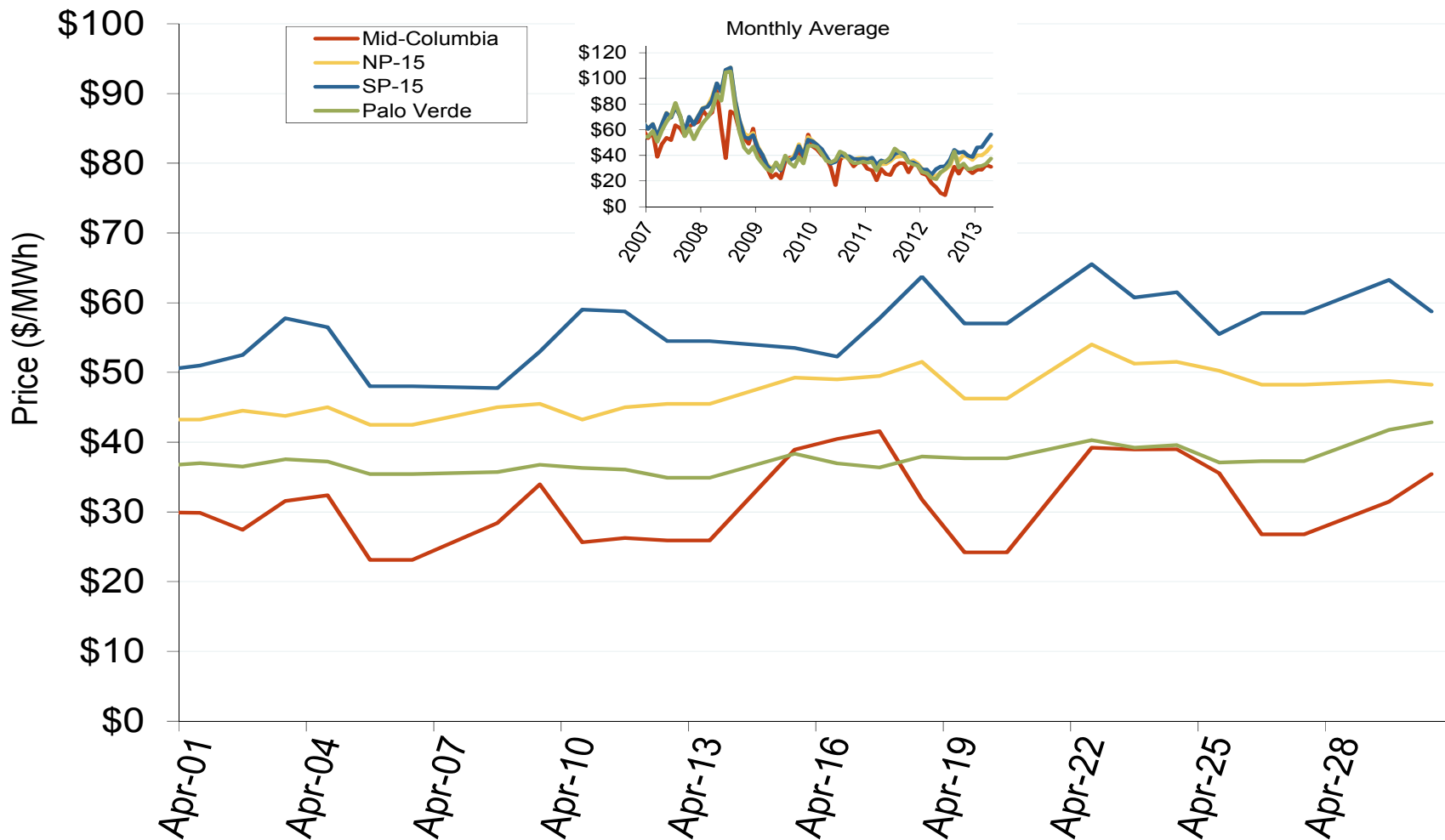
Southwestern Daily Index Day-Ahead On-Peak Prices



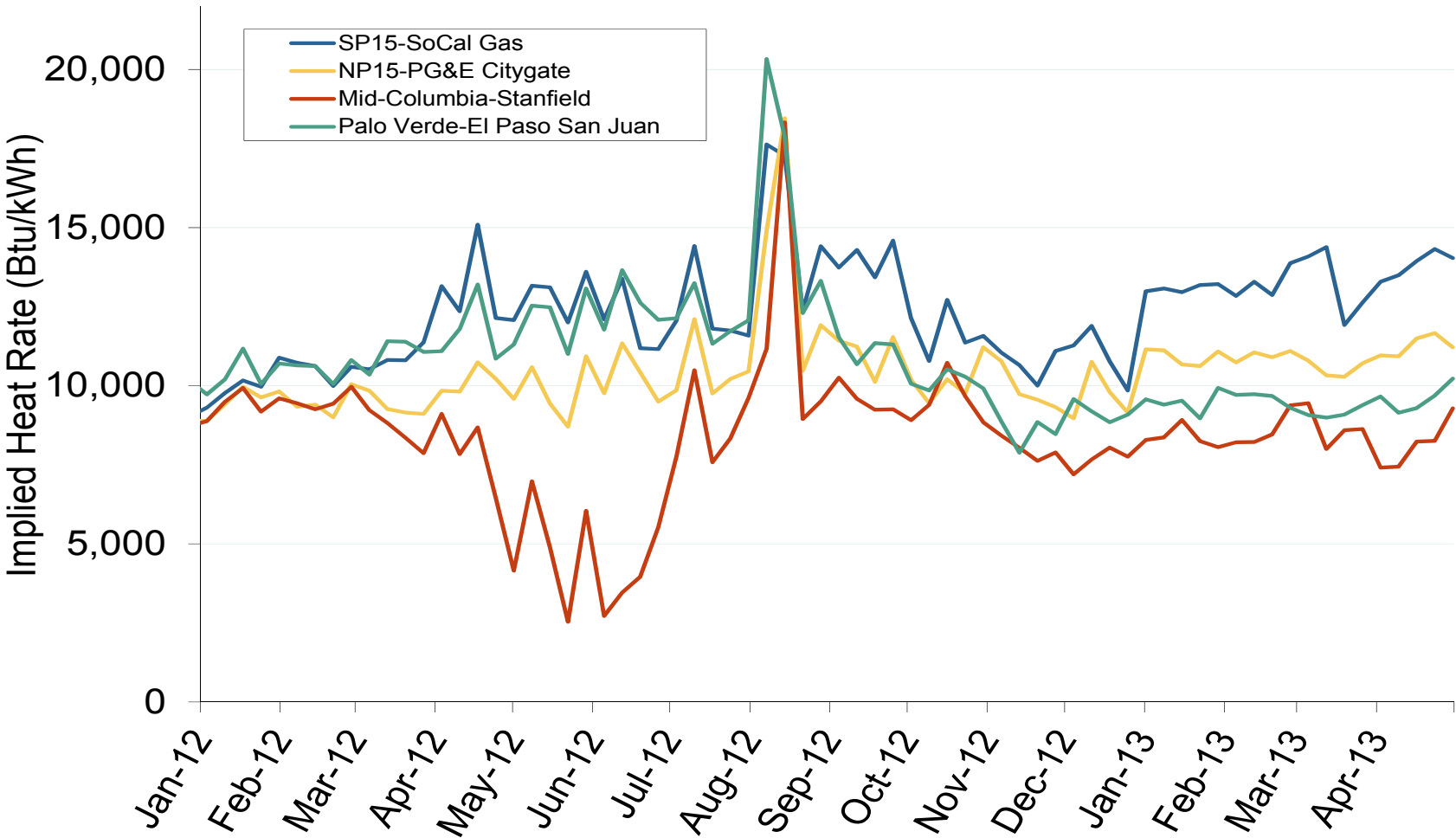
Southwest Electric Market: Last Month's Western Index Prices

Federal Energy Regulatory Commission • Market Oversight • www.ferc.gov/oversight

Western Daily Index Day-Ahead On-Peak Prices



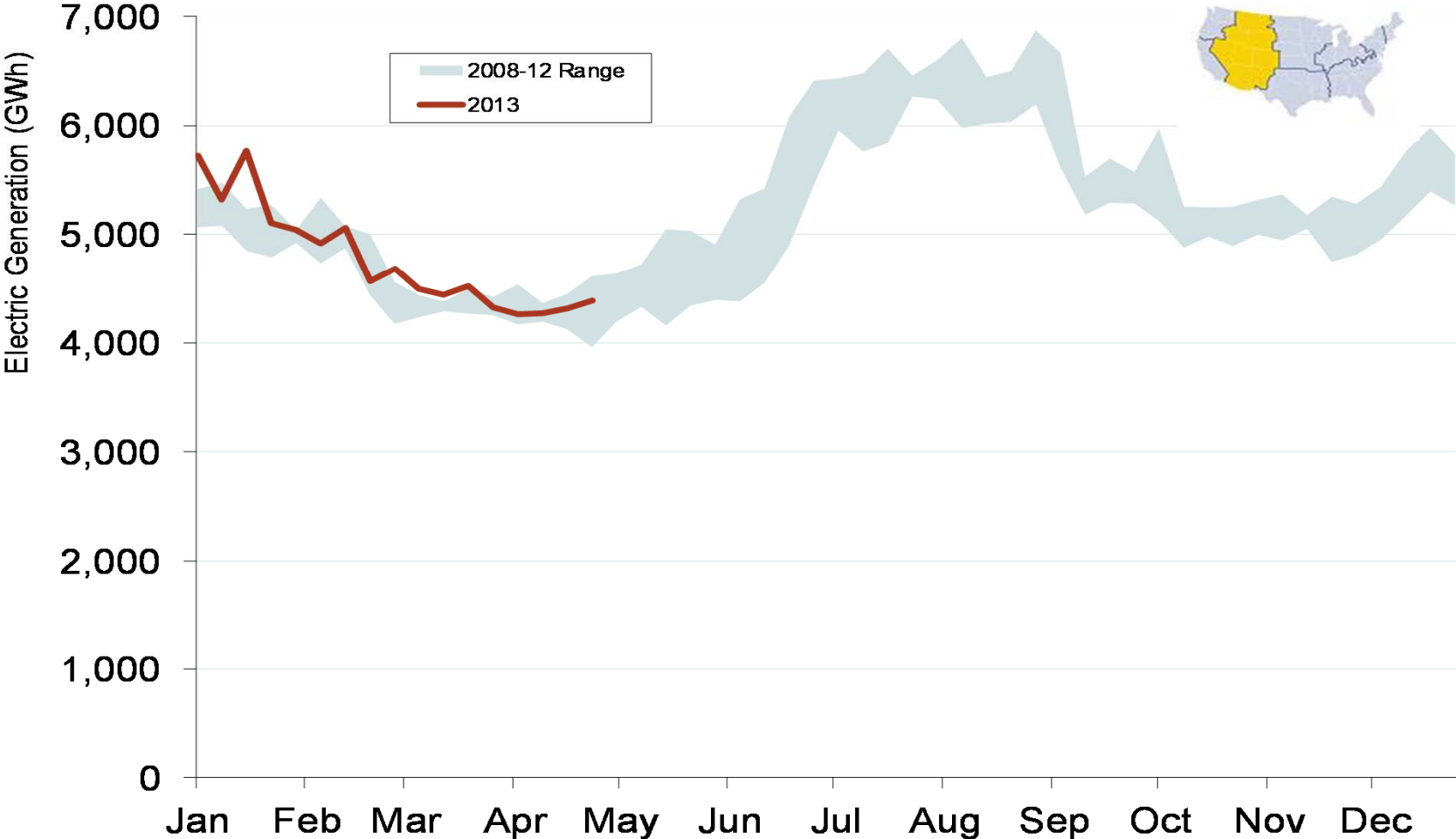
Implied Heat Rates at Western Trading Points - Weekly Avgs.



Source: Derived from *Platts* on-peak electric and natural gas price data
May 2013

Updated: May 22, 2013

Weekly Generation Output - Rocky Mountains



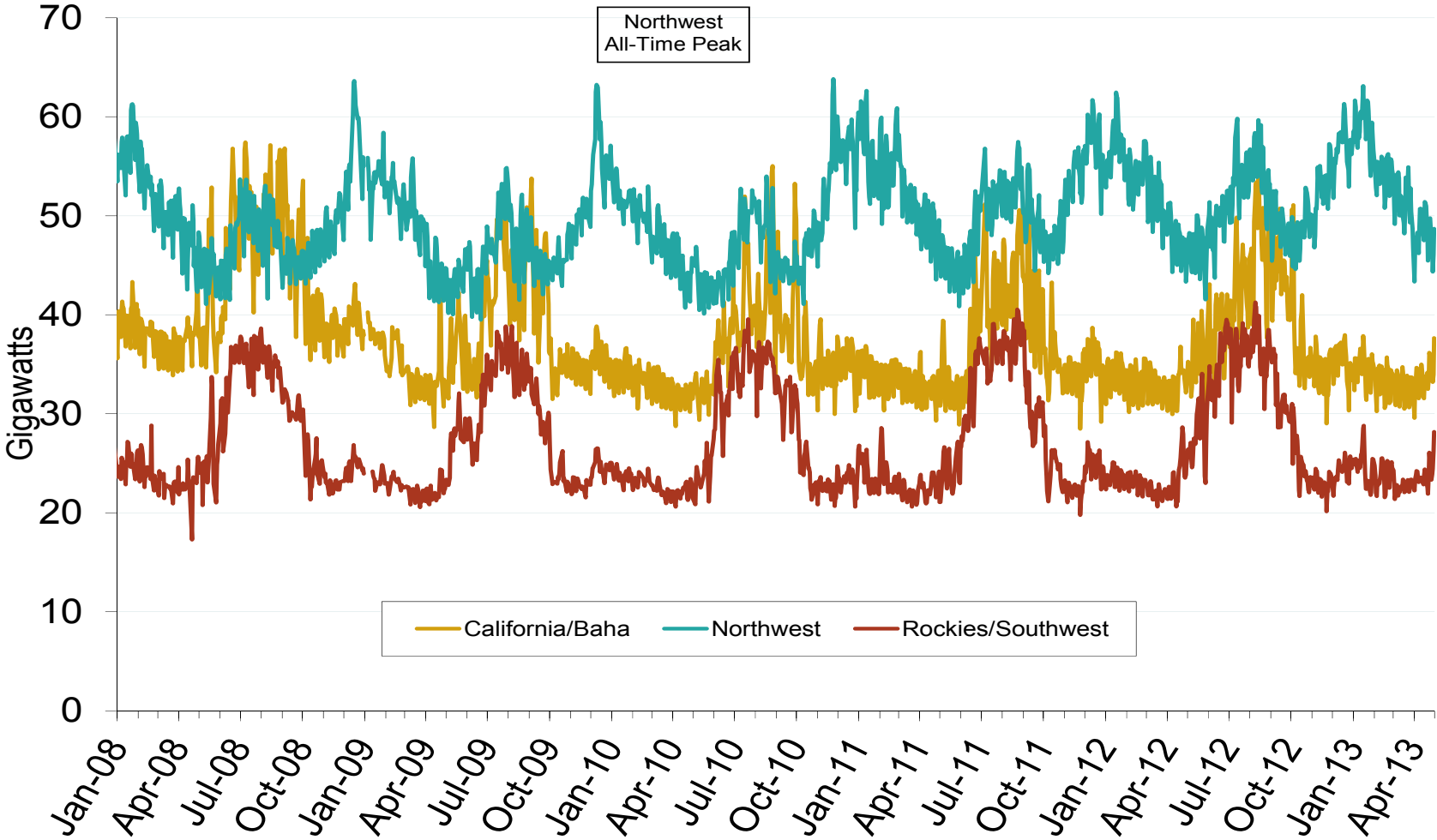
Source: Derived from *EEI* data
May 2013

Updated: May 23, 2013

Southwest Electric Market: Daily Peak Demand

Federal Energy Regulatory Commission • Market Oversight • www.ferc.gov/oversight

Western Daily Actual Peak Demand



Source: Derived from WECC Daily Report data available at <http://wecc.biz>
Notes: Data does not include weekends and holidays. Some data for 12/31/2008 – 1/9/2009 are not available from WECC