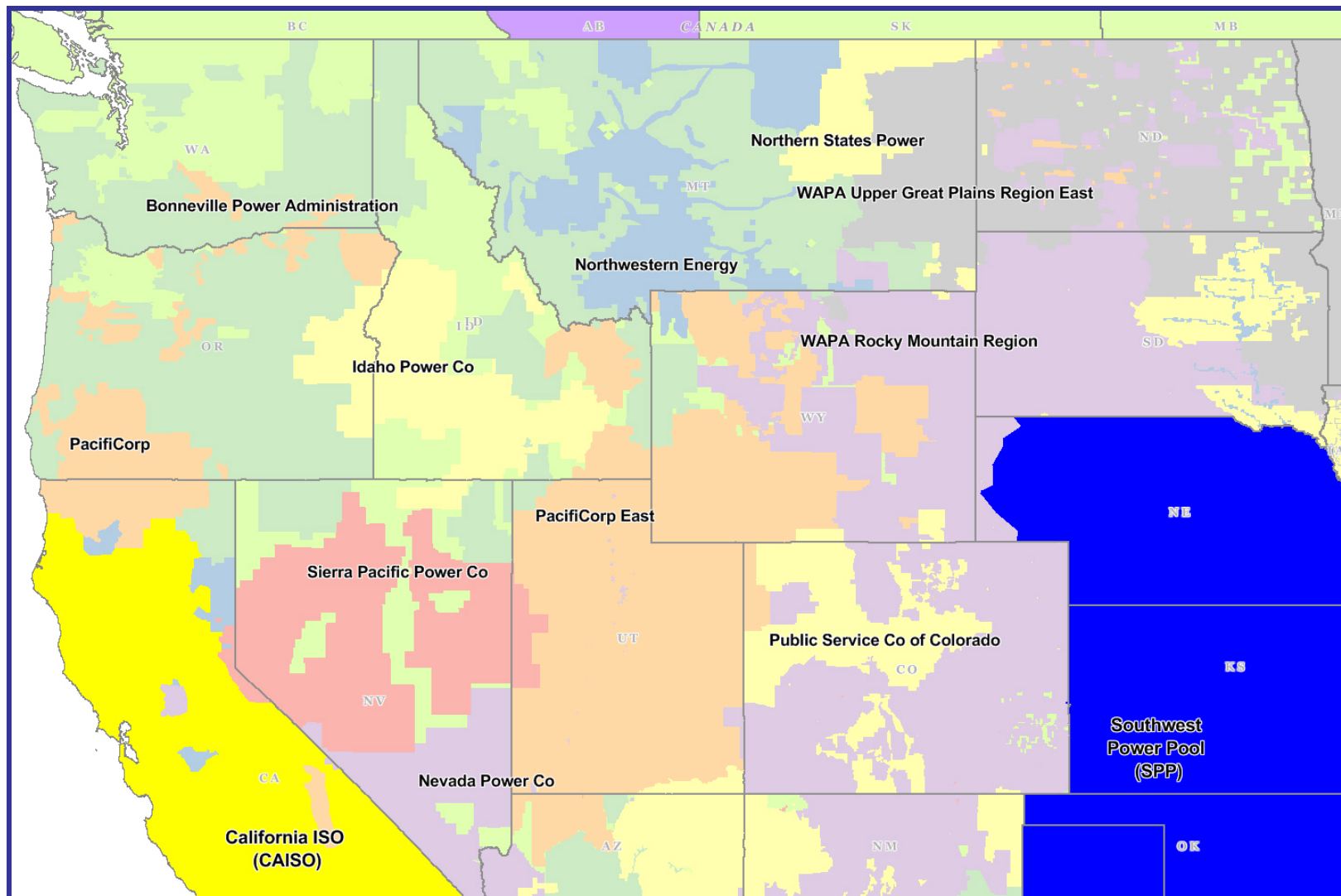


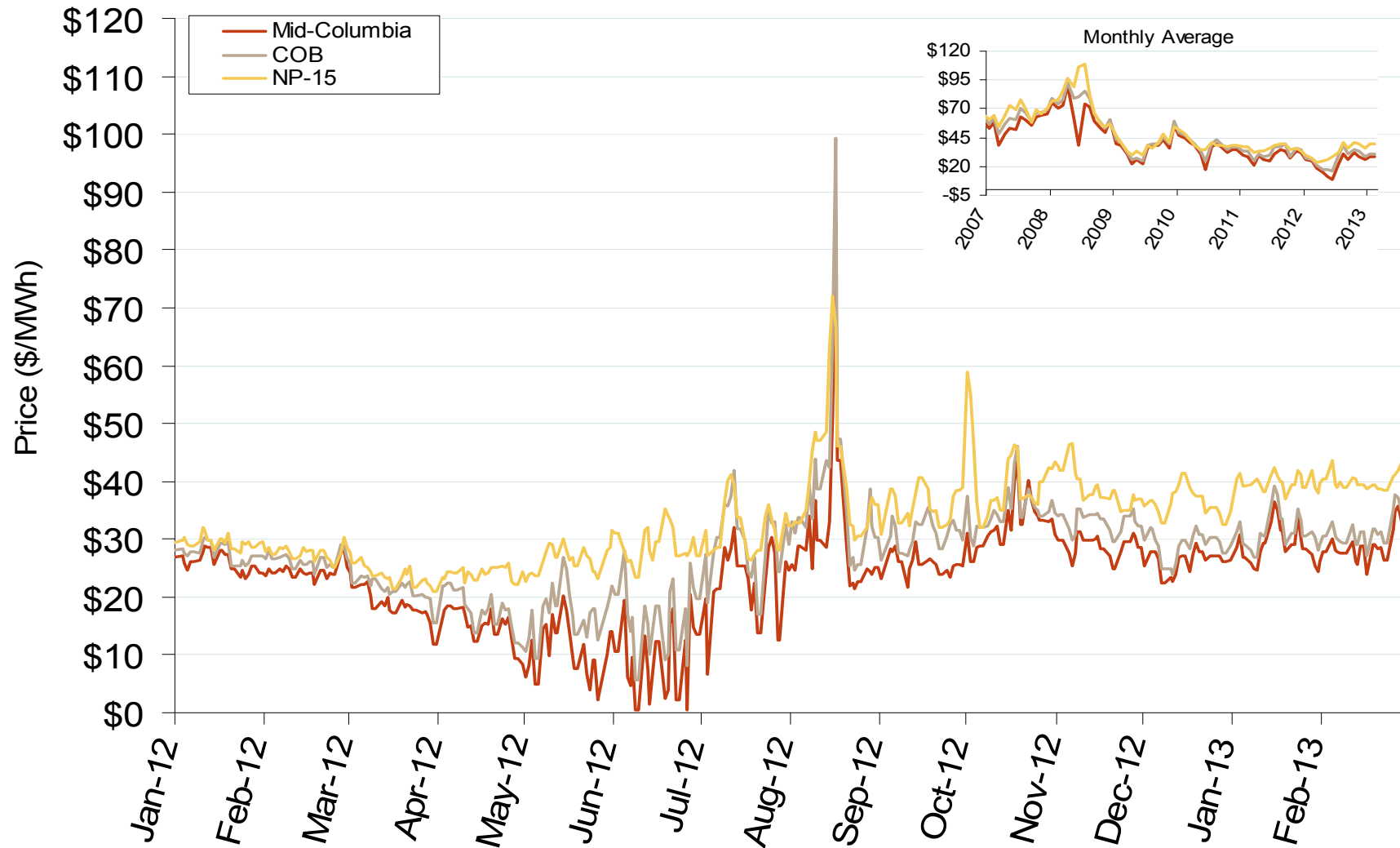
# Northwest Electric Market



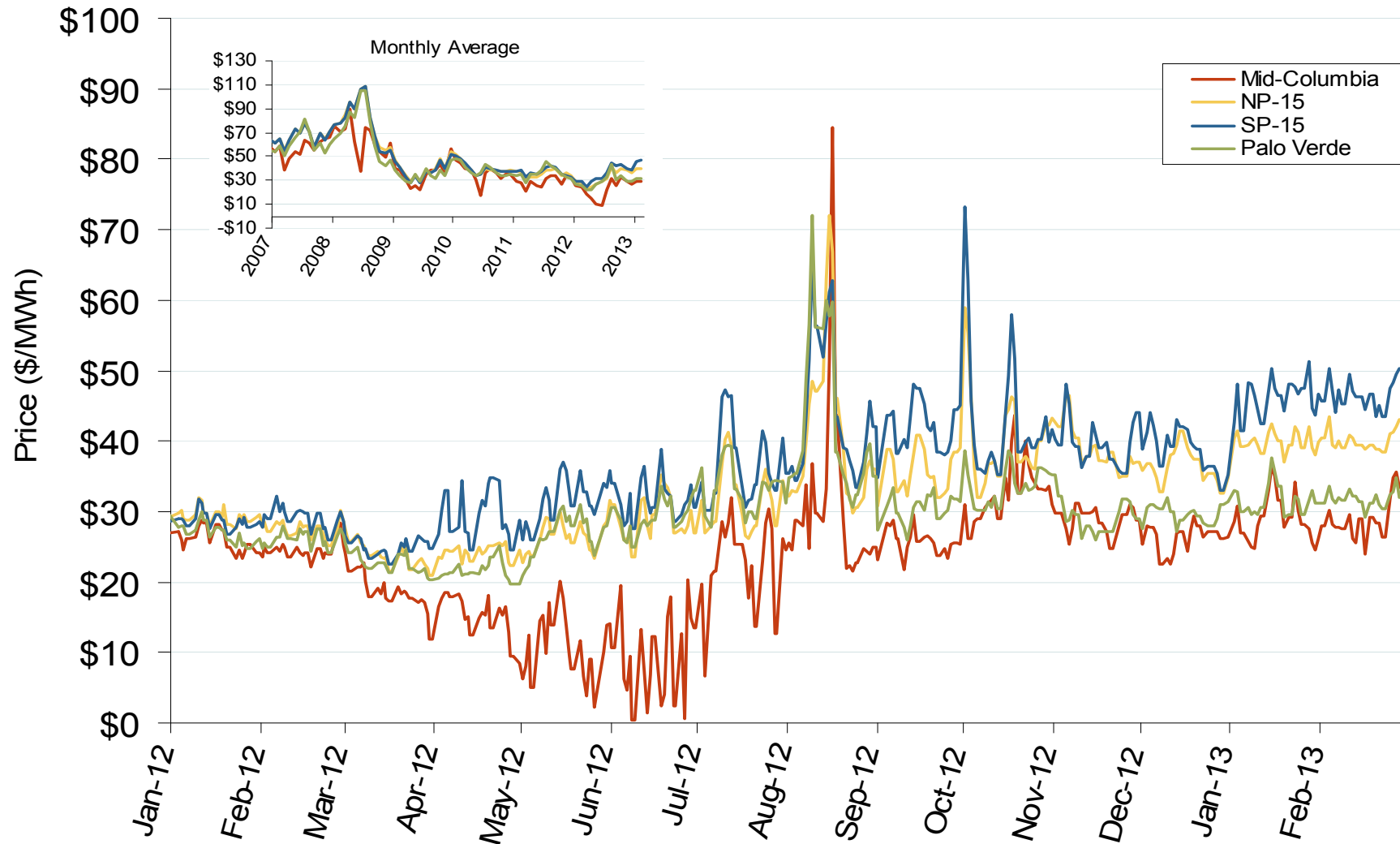
## Northwest Annual Average Bilateral Prices

Annual Average Day Ahead On Peak Prices (\$/MWh)						
	2008	2009	2010	2011	2012	5-Year Avg
Mid-Columbia (Mid-C)	\$65.00	\$35.66	\$35.90	\$29.10	\$22.54	\$37.66
California-Oregon Border (COB)	\$73.86	\$38.02	\$38.84	\$32.55	\$26.79	\$42.03

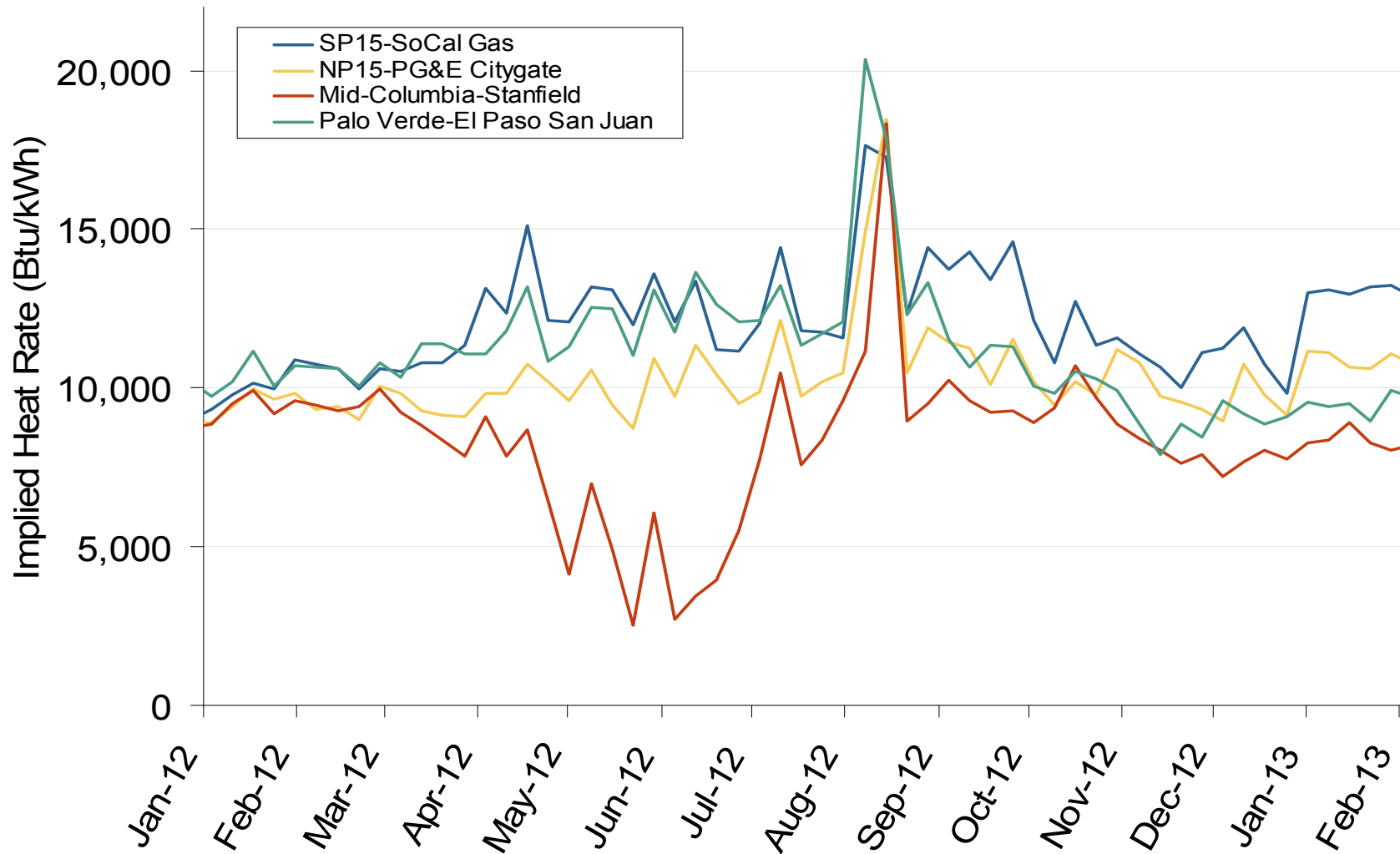
## Northwestern Daily Index Day-Ahead On-Peak Prices



## Western Daily Index Day-Ahead On-Peak Prices



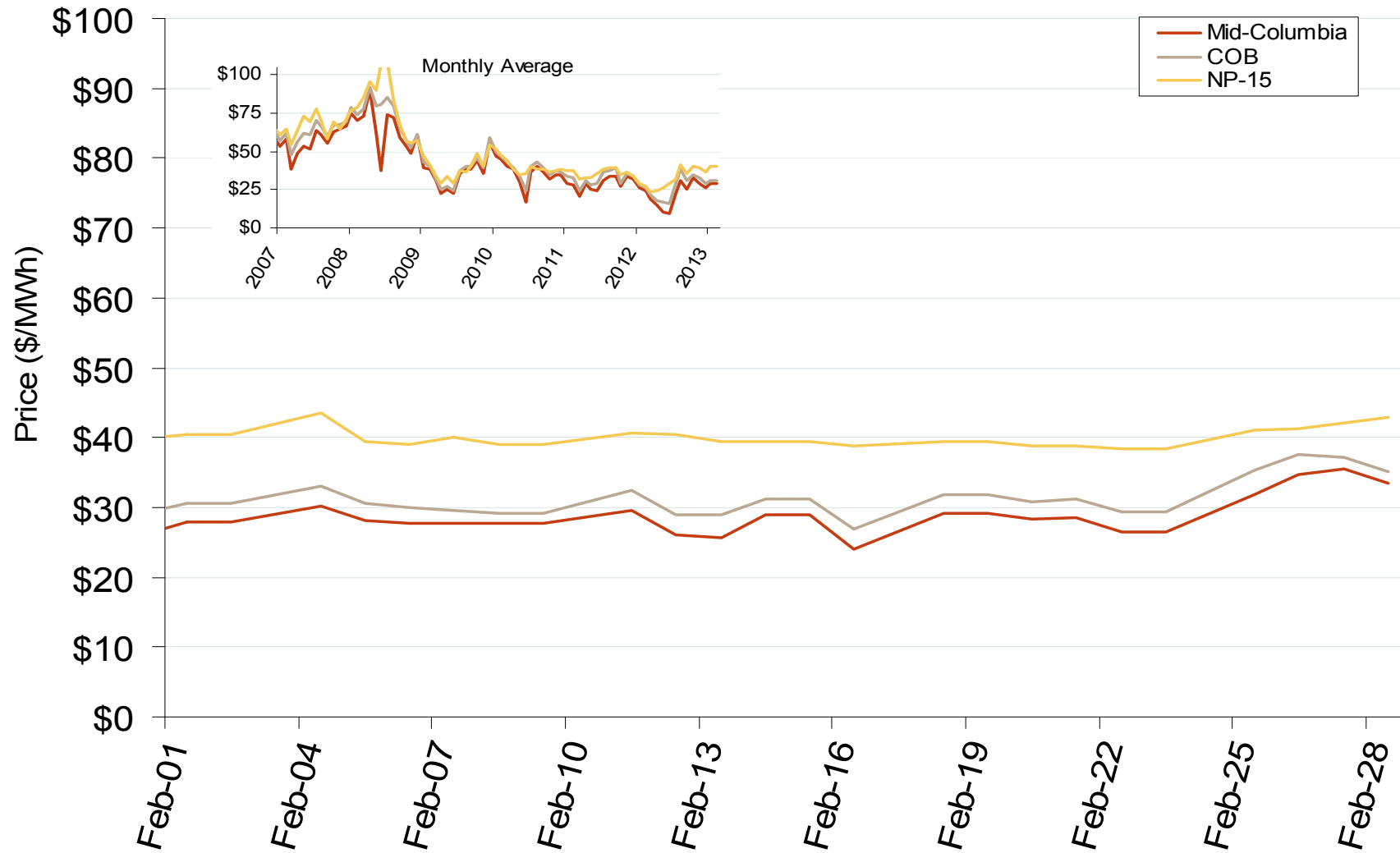
## Implied Heat Rates at Western Trading Points - Weekly Avgs.



Northwest Electric Market: Last Month's Northwestern Index Prices

Federal Energy Regulatory Commission • Market Oversight • [www.ferc.gov/oversight](http://www.ferc.gov/oversight)

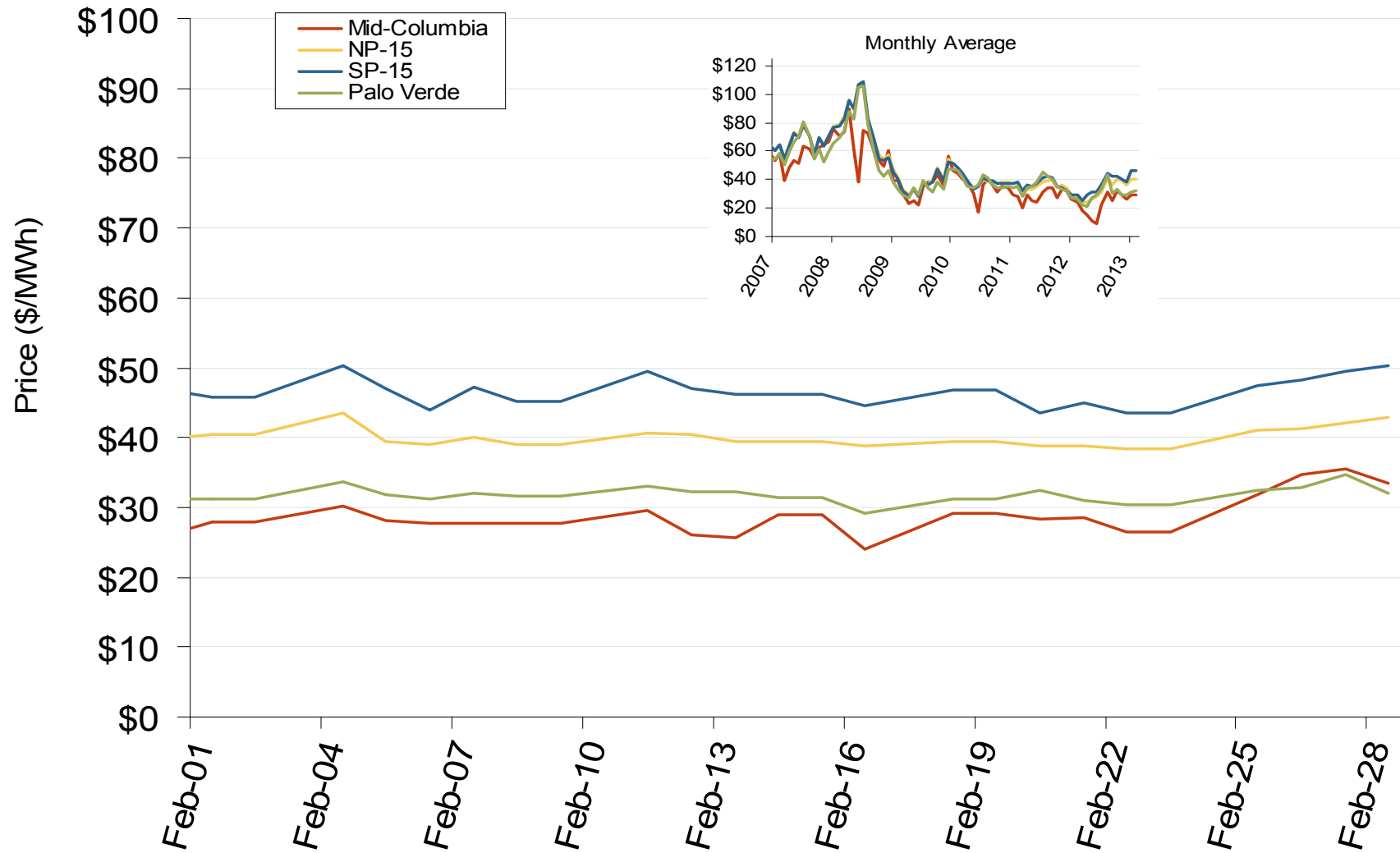
## Northwestern Daily Index Day-Ahead On-Peak Prices



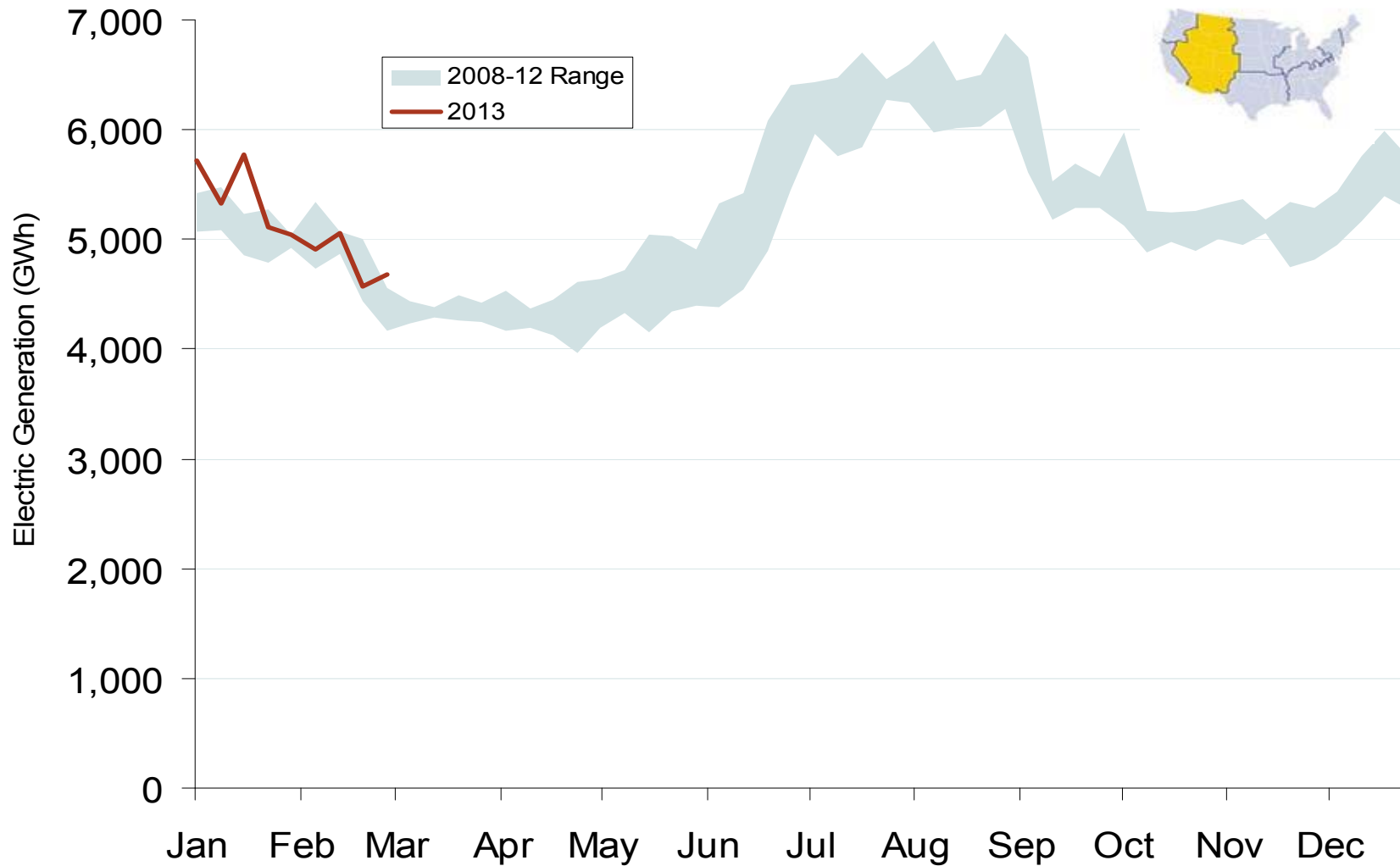
Northwest Electric Market: Last Month's Western Index Prices

Federal Energy Regulatory Commission • Market Oversight • [www.ferc.gov/oversight](http://www.ferc.gov/oversight)

## Western Daily Index Day-Ahead On-Peak Prices

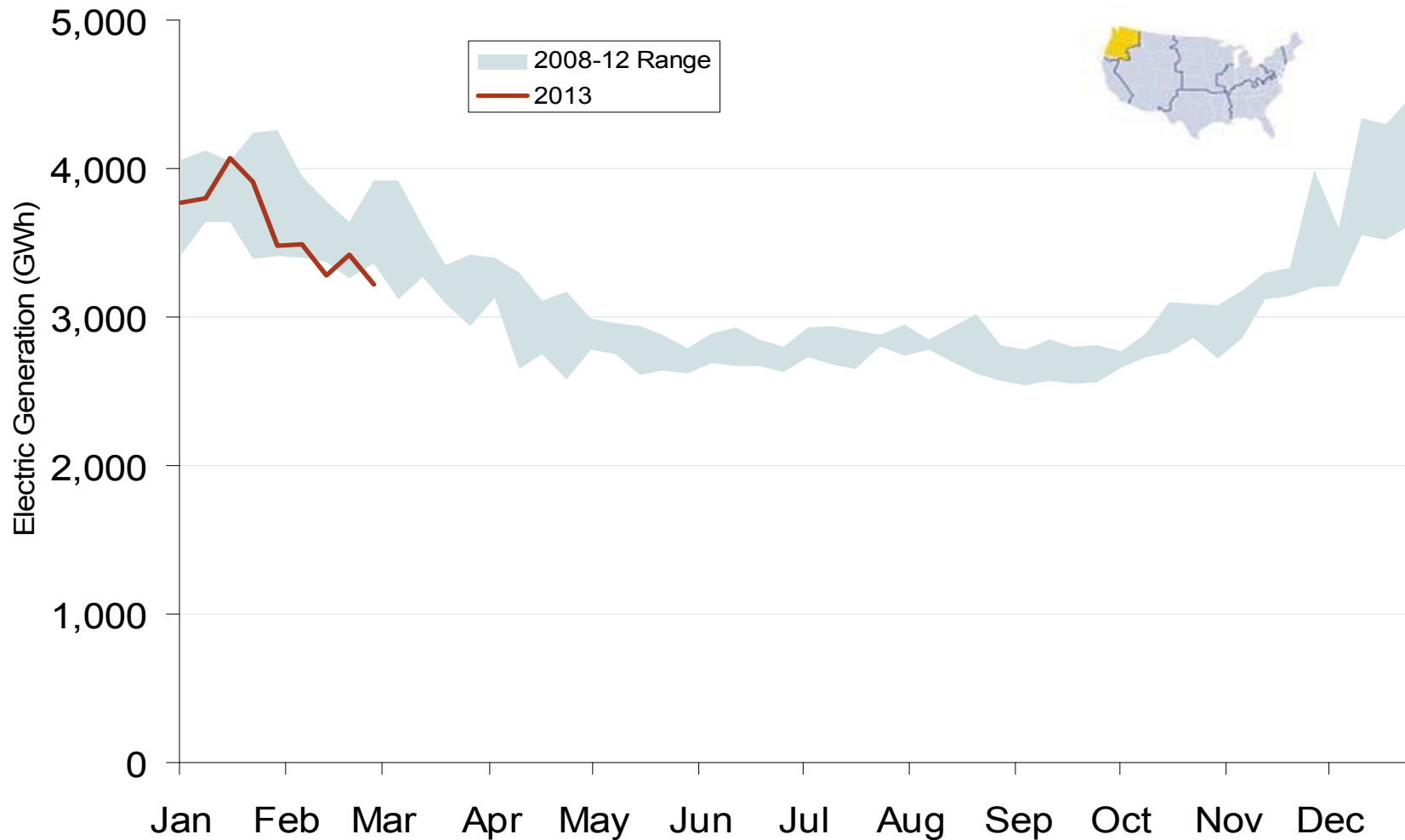


## Weekly Generation Output - Rocky Mountains





## Weekly Generation Output - Pacific Northwest



## Pacific/Northwest Hydro and Snowpack Levels

<b>Snow Water Equivalent</b>			
	<b>One Year Ago (3/1/2012) (% of historical median)</b>	<b>One Month Ago (2/1/2013) (% of historical median)</b>	<b>Current (3/1/2013) (% of historical median)</b>
<b>California</b>	<b>36%</b>	<b>102%</b>	<b>75%</b>
<b>Idaho</b>	<b>101%</b>	<b>93%</b>	<b>87%</b>
<b>Montana</b>	<b>108%</b>	<b>98%</b>	<b>95%</b>
<b>Oregon</b>	<b>79%</b>	<b>101%</b>	<b>97%</b>
<b>Washington</b>	<b>116%</b>	<b>119%</b>	<b>119%</b>
<b>Columbia River Basin</b>	<b>101%</b>	<b>104%</b>	<b>100%</b>

### Notes:

Snow Water Equivalent represents the depth of water in the snowpack, if the snowpack were melted, expressed in inches. The percentage of median is the ratio of current snow water equivalents compared to the median for the same day 1981-2010.

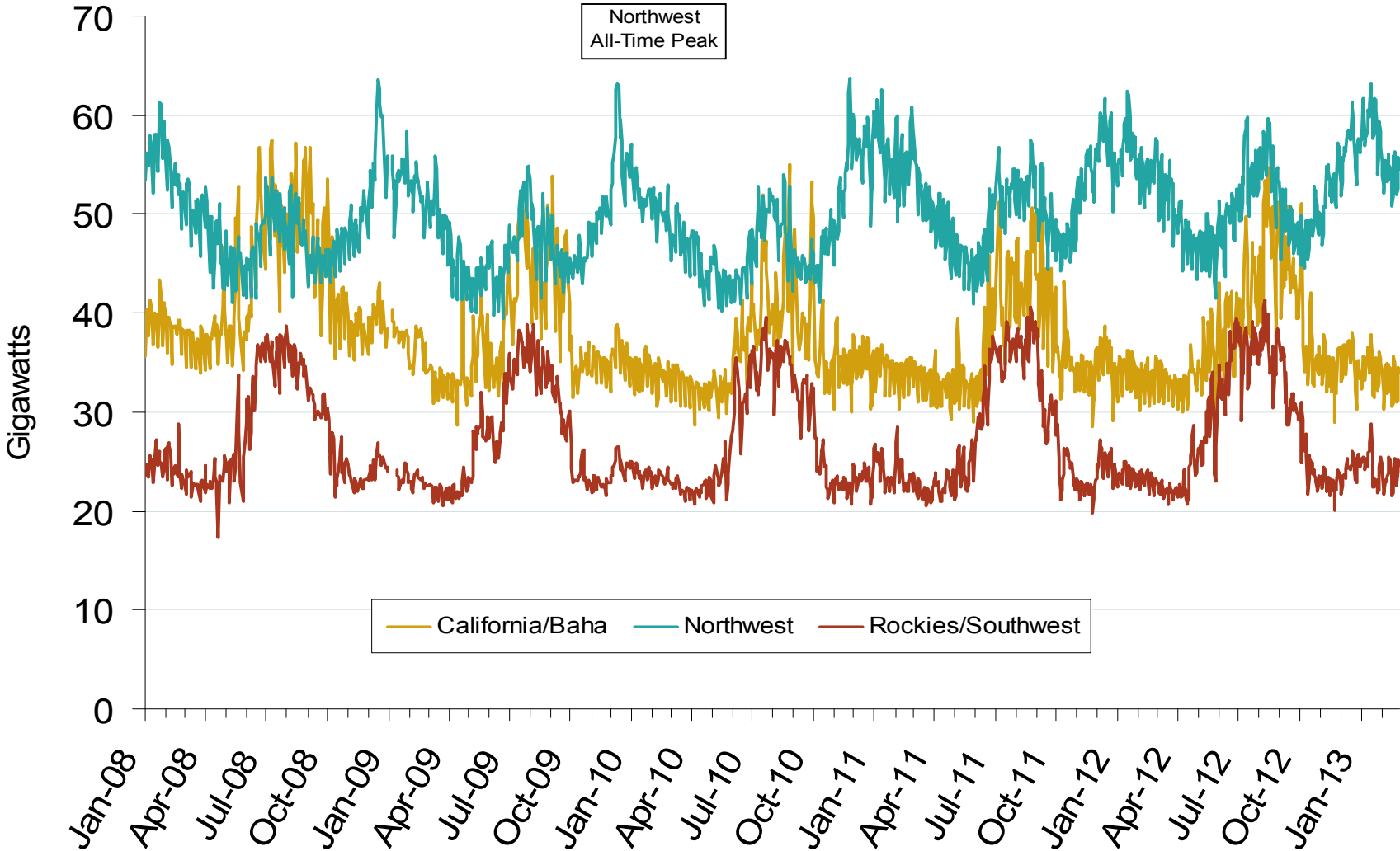
Source: U.S. Department of Agriculture Natural Resources Conservation Service

March 2013

Updated: March 13, 2013

1198

### Western Daily Actual Peak Demand



Notes: Data does not include weekends and holidays. Some data for 12/31/2008 – 1/9/2009 are not available from WECC

Source: Derived from WECC Daily Report data available at <http://wecc.biz>