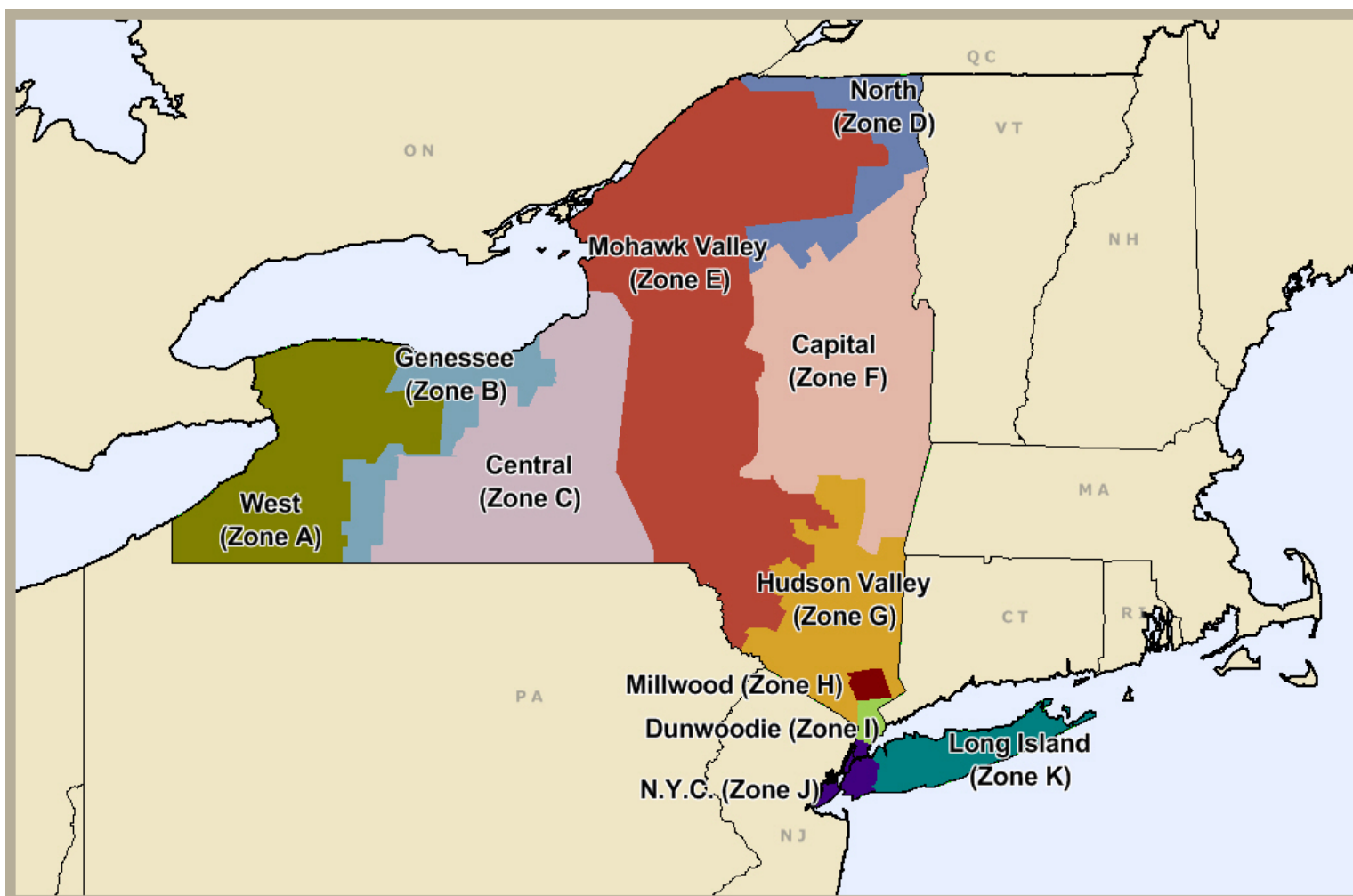


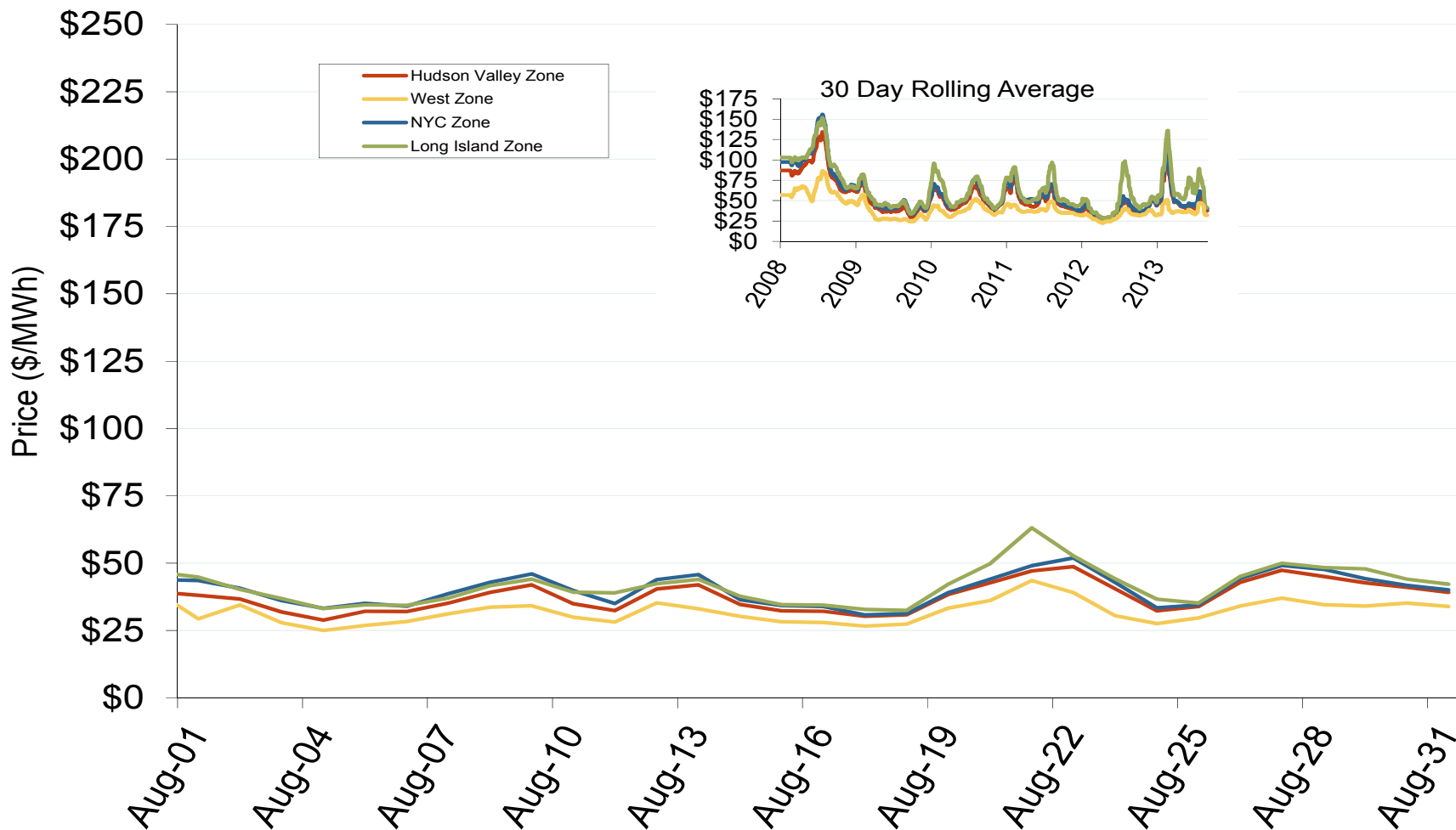
New York Independent System Operator (NYISO)



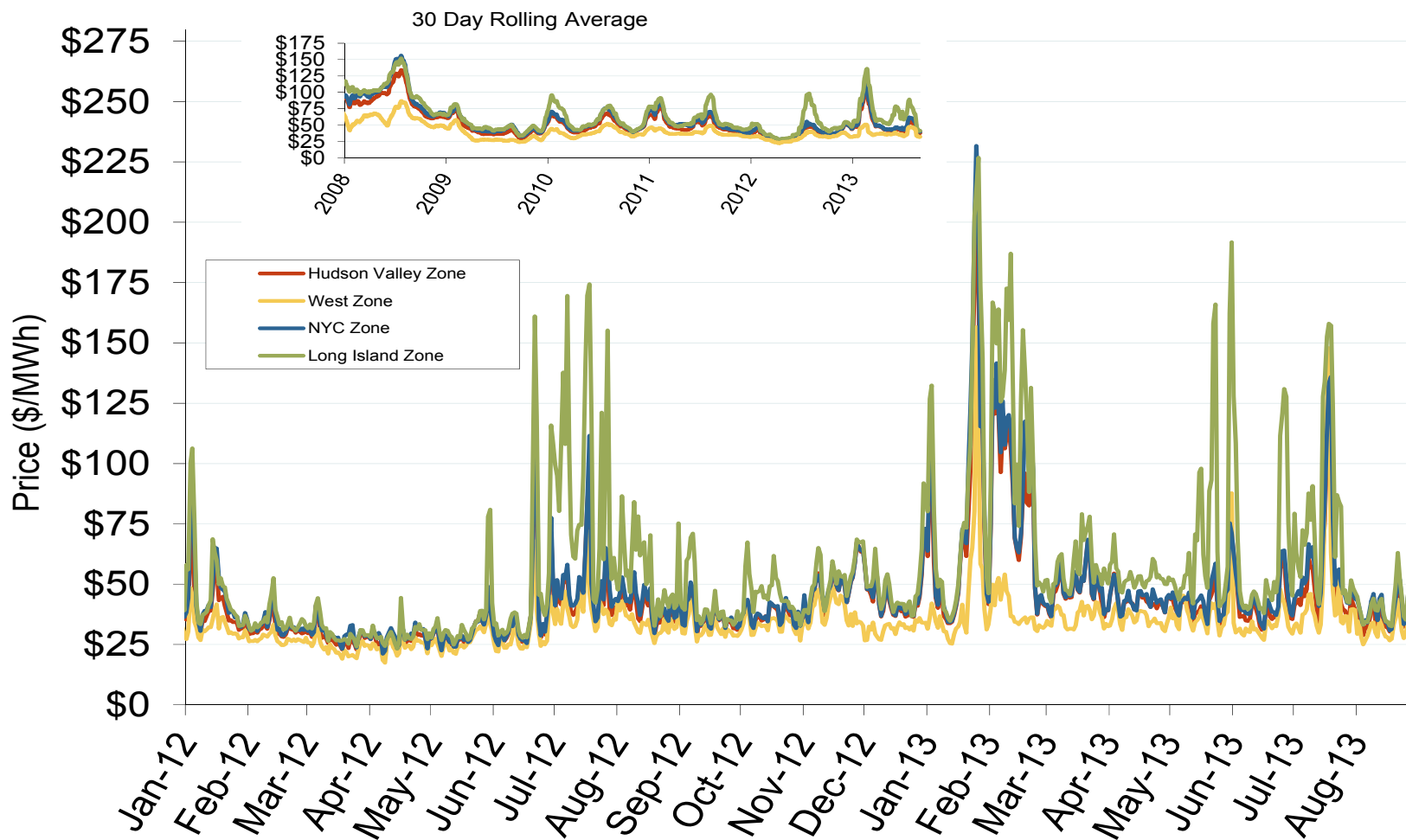
New York Annual Average Bilateral Prices

Annual Average Day Ahead On Peak Prices (\$/MWh)						
	2008	2009	2010	2011	2012	5-Year Avg
Mass Hub	\$91.55	\$46.24	\$56.18	\$52.64	\$42.06	\$57.75
Ny Zone G	\$100.99	\$49.80	\$59.48	\$56.41	\$44.35	\$62.22
NY Zone J	\$112.63	\$55.77	\$65.76	\$62.71	\$46.95	\$68.79
NY Zone A	\$68.34	\$35.54	\$43.89	\$41.52	\$35.82	\$45.03
PJM West	\$83.70	\$44.60	\$53.68	\$51.99	\$40.86	\$54.98

Daily Average of NYISO Day-Ahead Prices - All Hours

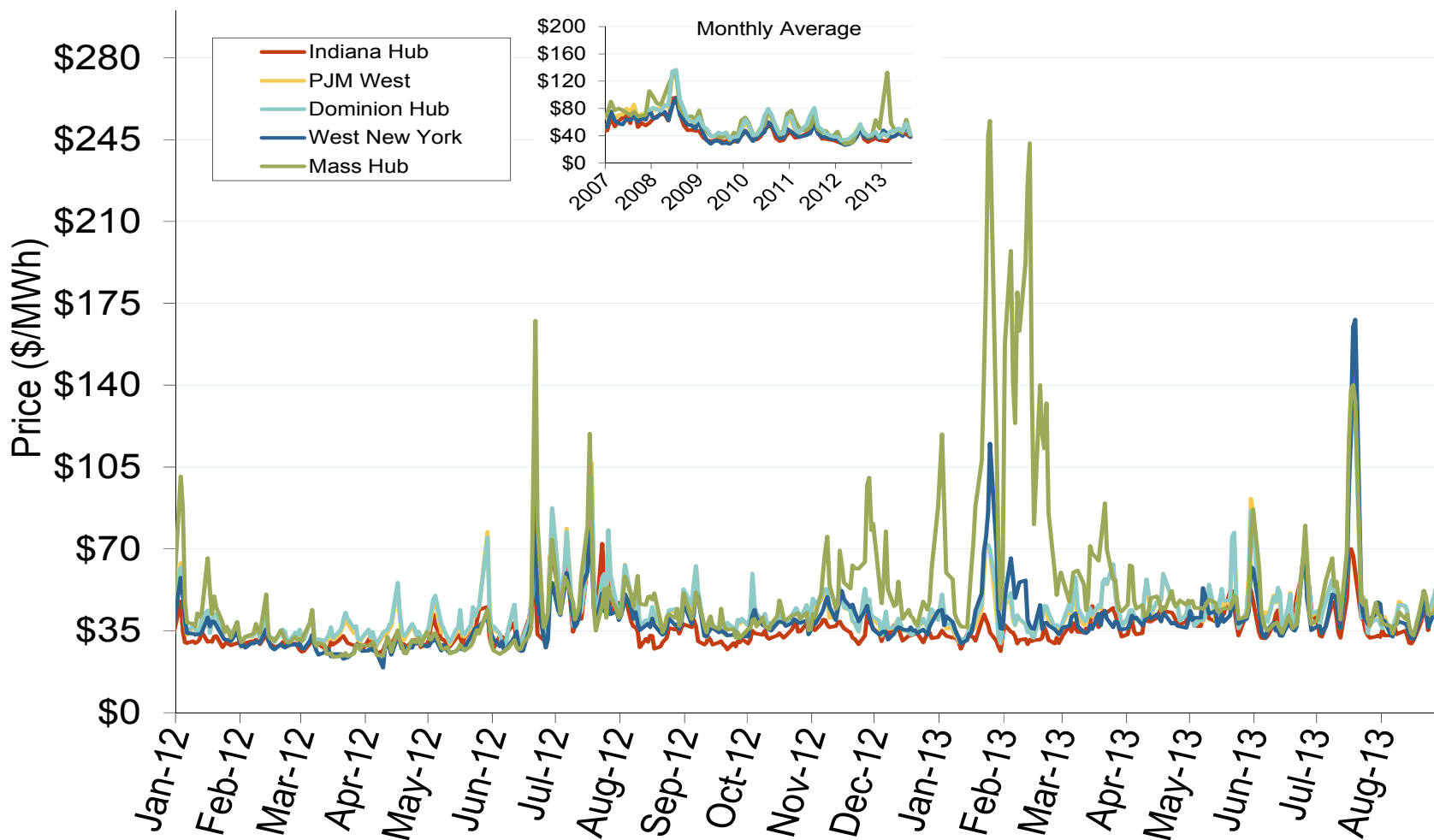


Daily Average of NYISO Day-Ahead Prices - All Hours



Notes: ICE on-peak forward (physical) and swap (financial) volumes are for the Nepoch Mass Hub and include monthly, dual monthly, quarterly, and calendar year contracts traded for each month

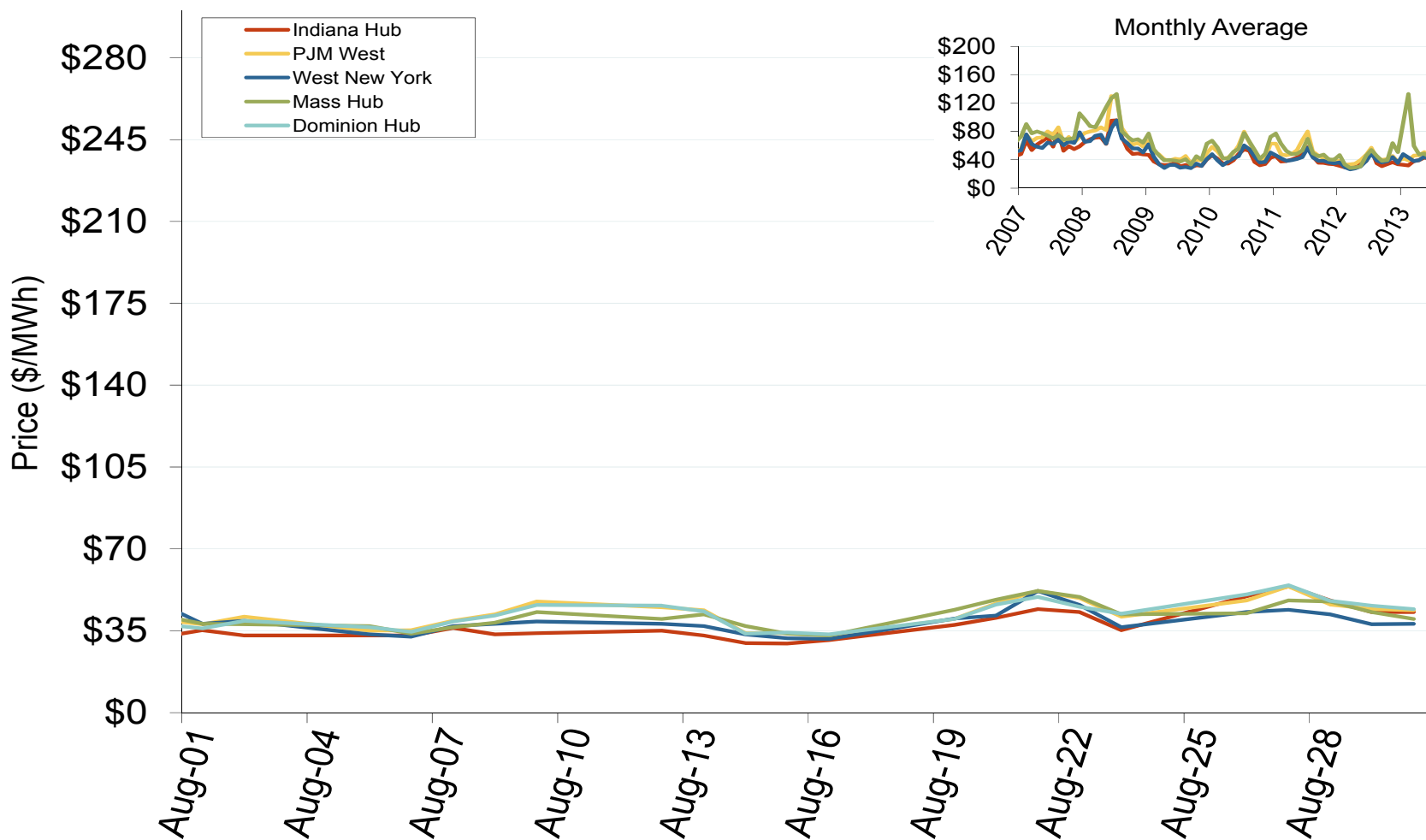
Eastern Daily Index Day-Ahead On-Peak Prices



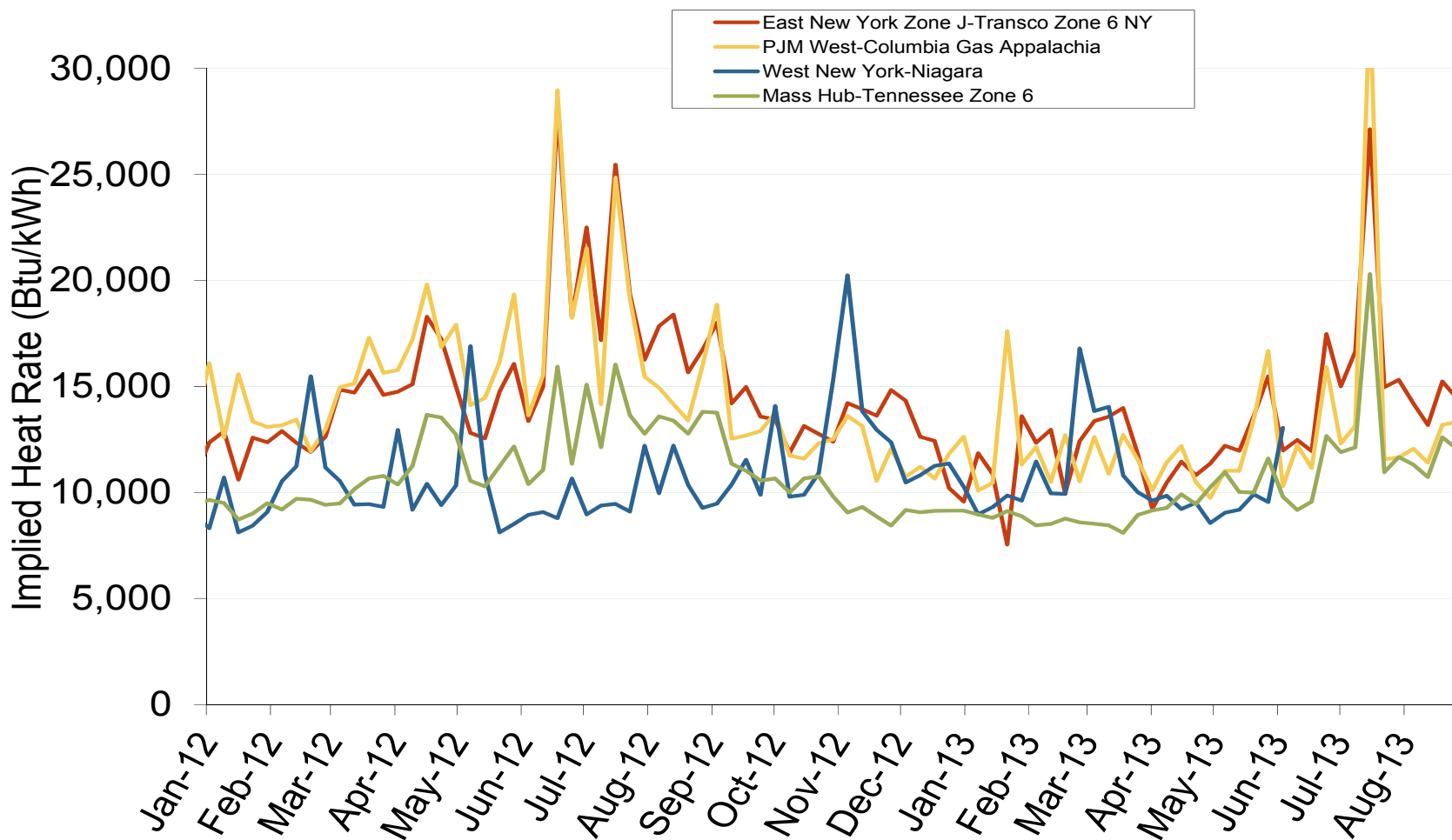
New York Electric Market: Last Month's Eastern Index Prices

Federal Energy Regulatory Commission • Market Oversight • www.ferc.gov/oversight

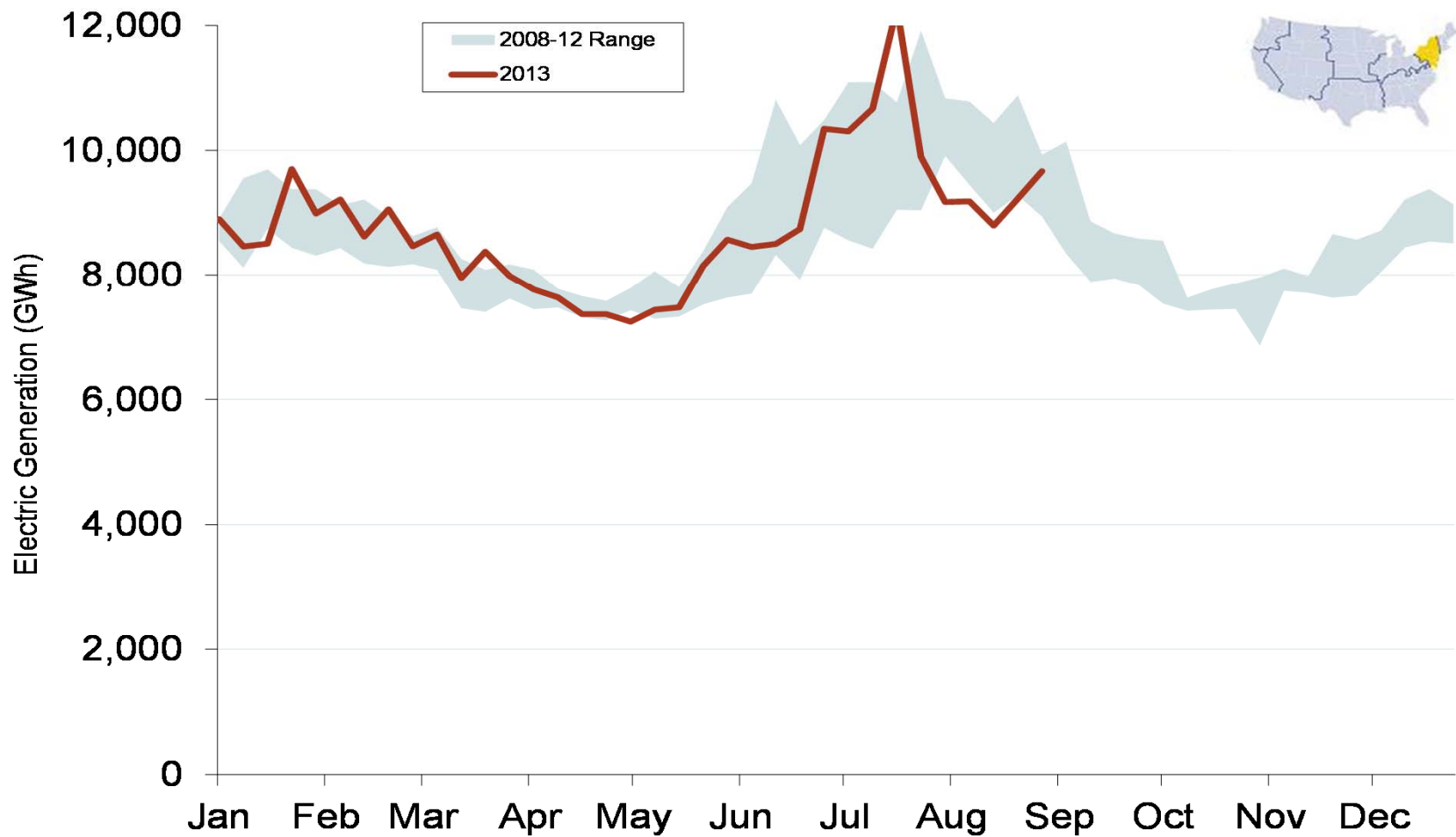
Eastern Daily Index Day-Ahead On-Peak Prices



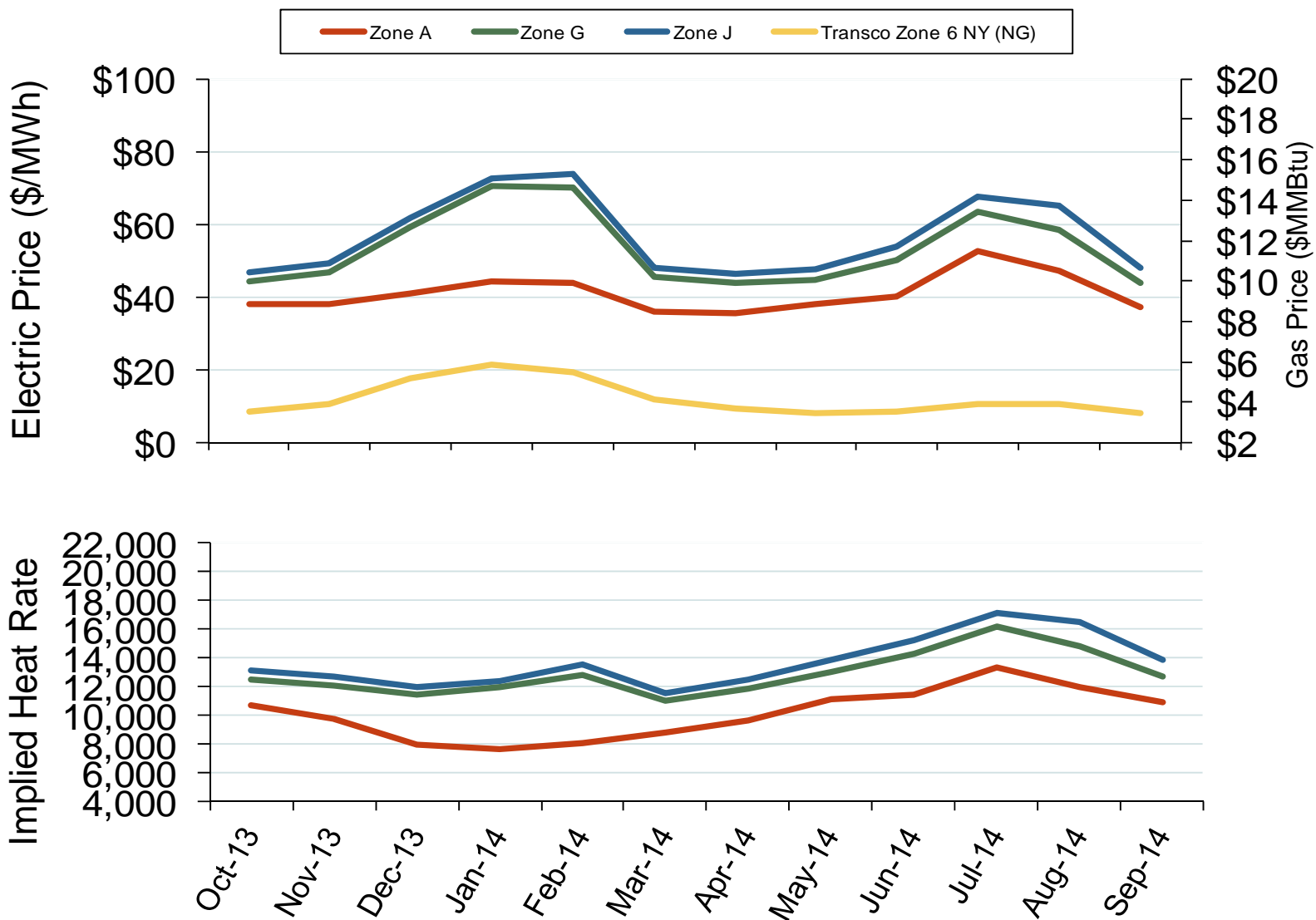
Implied Heat Rates at Eastern Trading Points - Weekly Avgs.



Weekly Generation Output - Mid Atlantic

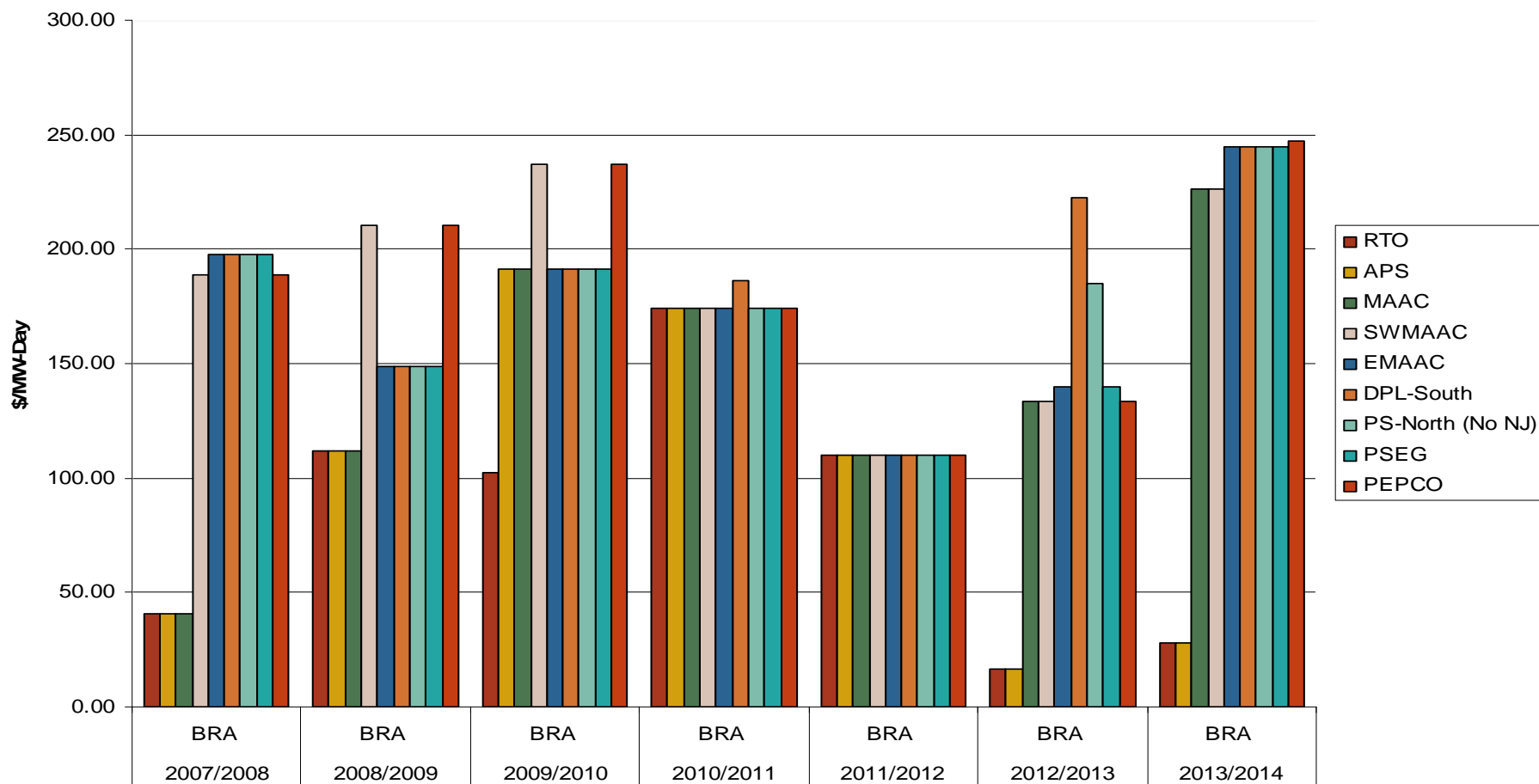


New York Electric Forward Price Curves and Implied Heat Rates



PJM, NYISO and ISO-NE Capacity Auction Prices

RPM Auction Clearing Prices by Locational Delivery Area (LDA)



Note: PJM values are for Base Residual Auctions only.

ISO-NE results are based on preliminary FCM auction before pro-rationing and EAS adjustment.

Source: Derived from PJM, NYISO and ISO-NE data

September 2013

Updated May 27, 2011

1145