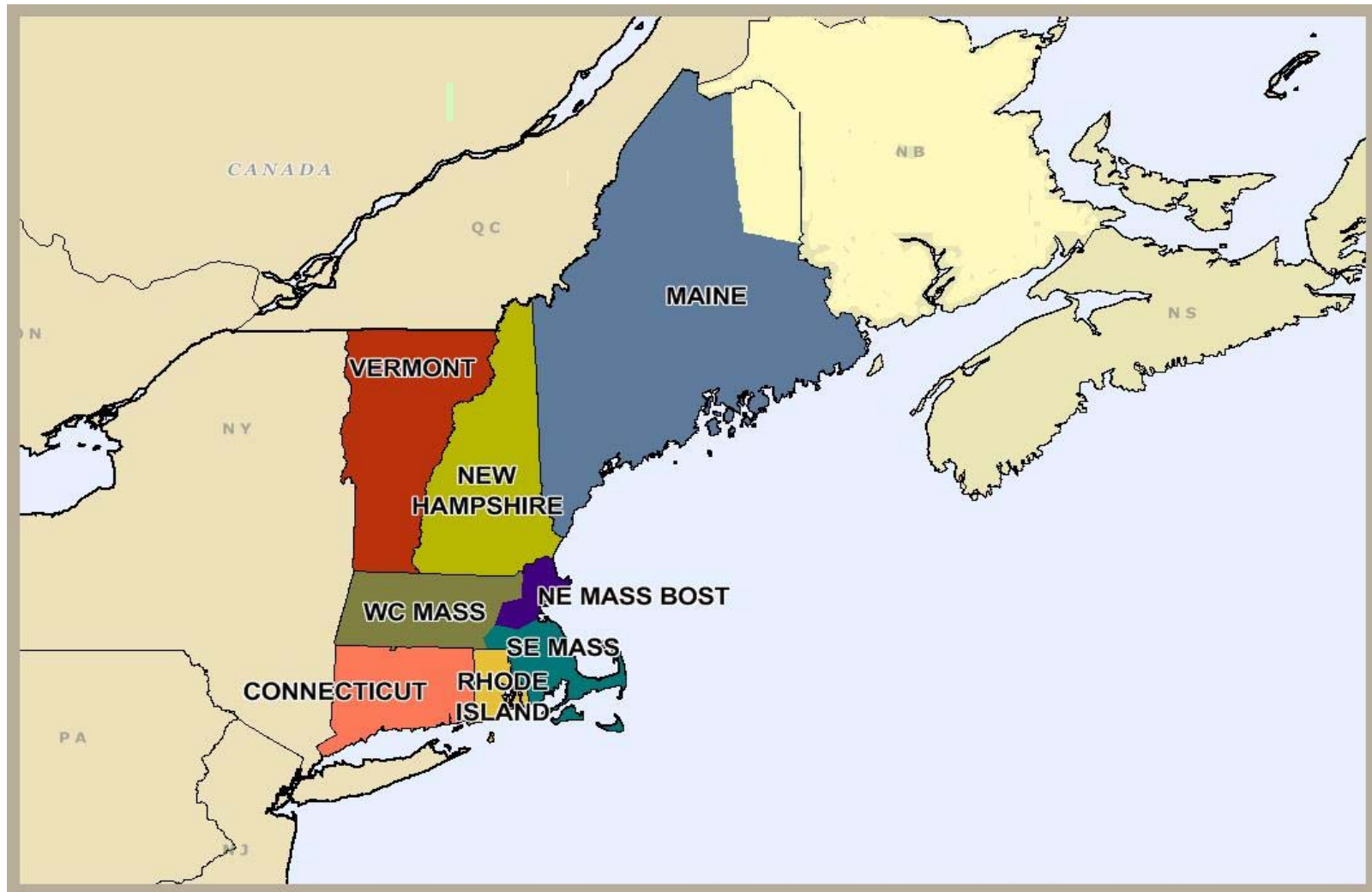


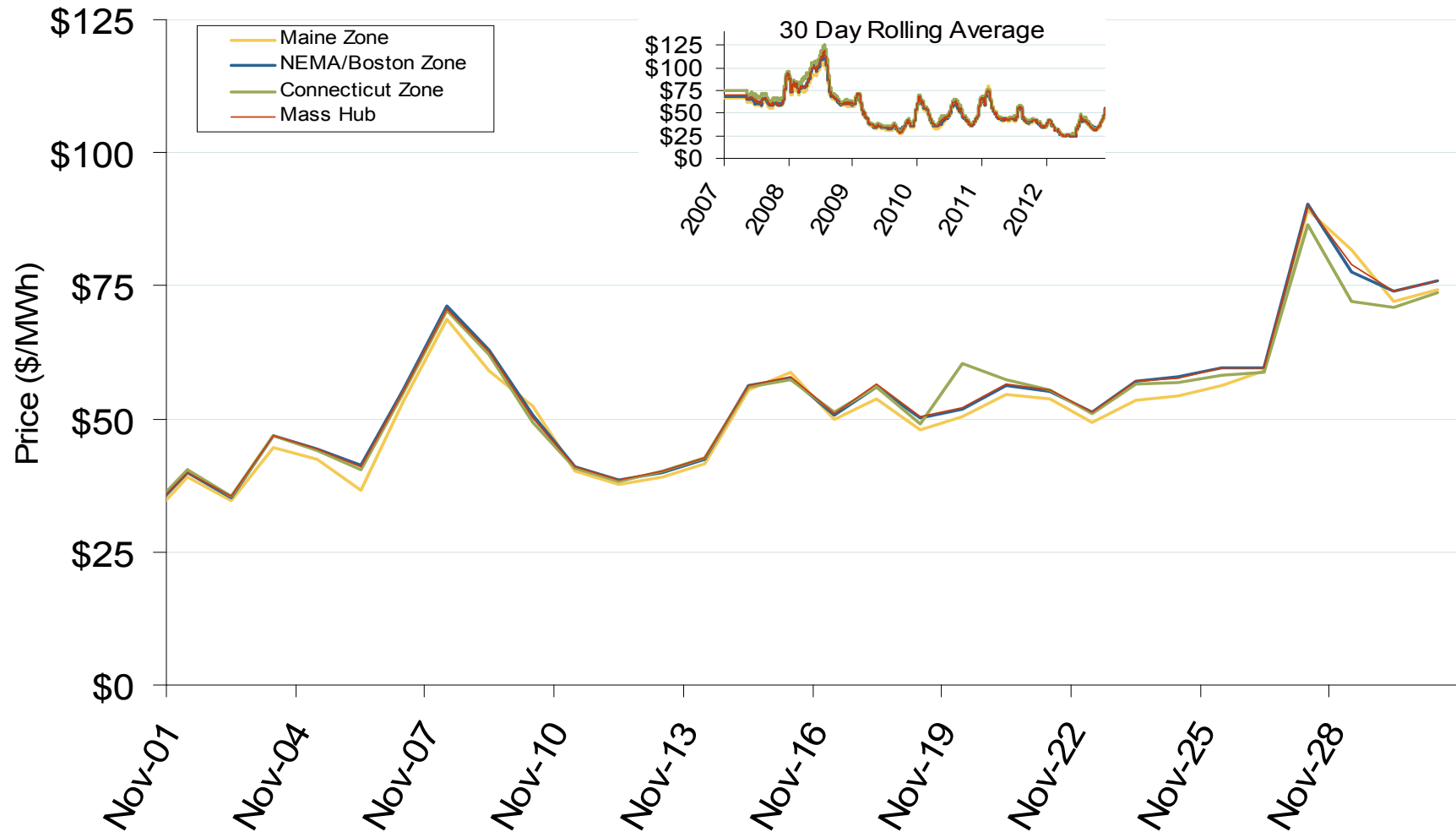
Independent System Operator of New England (ISO-NE)



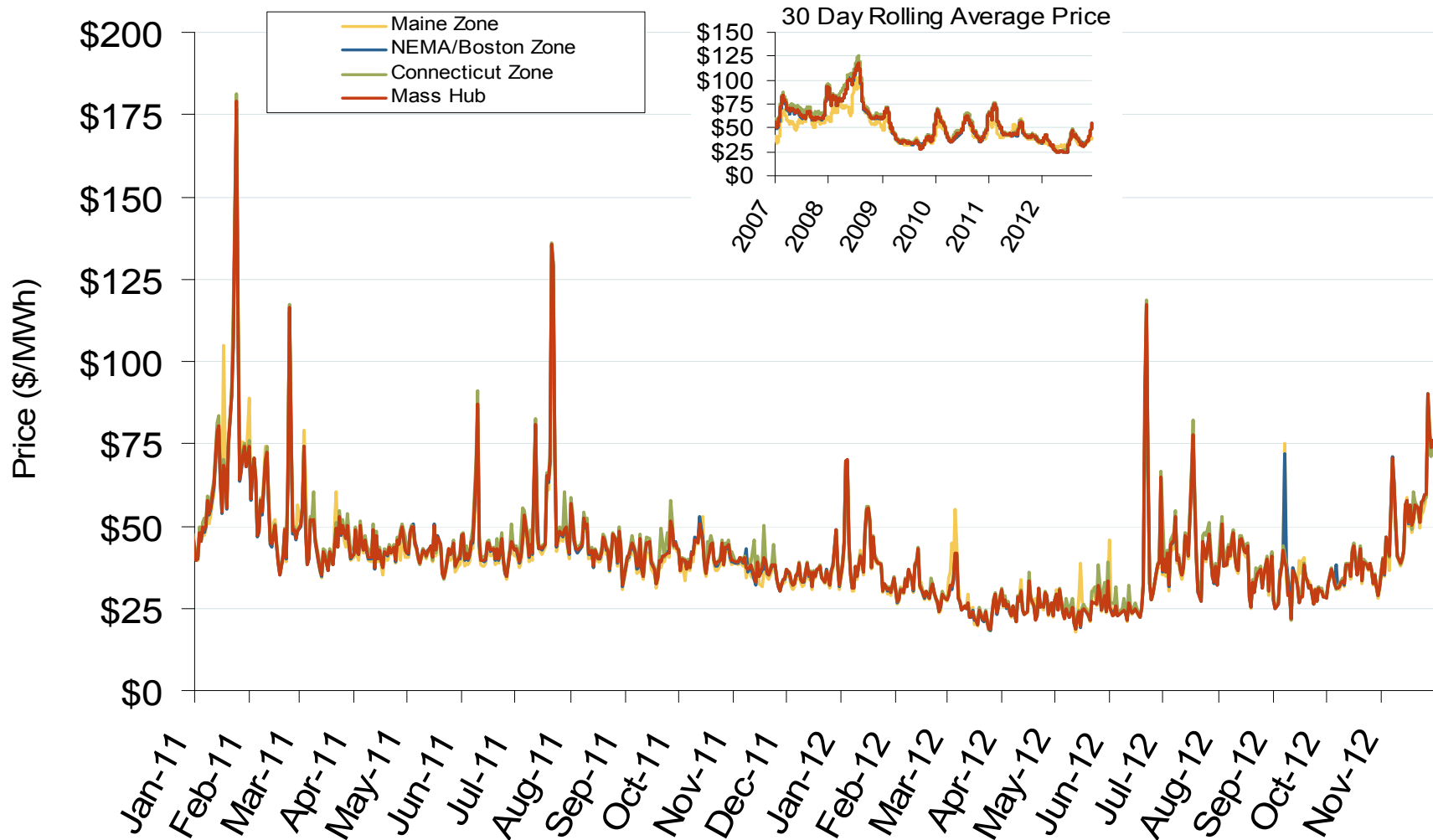
New England Annual Average Bilateral Prices

Annual Average Day Ahead On Peak Prices (\$/MWh)						
	2007	2008	2009	2010	2011	5-Year Avg
Mass Hub	\$77.39	\$91.55	\$46.24	\$56.18	\$52.64	\$68.23
Ny Zone G	\$83.51	\$100.99	\$49.80	\$59.48	\$56.41	\$73.94
NY Zone J	\$94.15	\$112.63	\$55.77	\$65.76	\$62.71	\$82.84
NY Zone A	\$64.02	\$68.34	\$35.54	\$43.89	\$41.52	\$54.09
PJM West	\$71.15	\$83.70	\$44.60	\$53.68	\$51.99	\$63.00

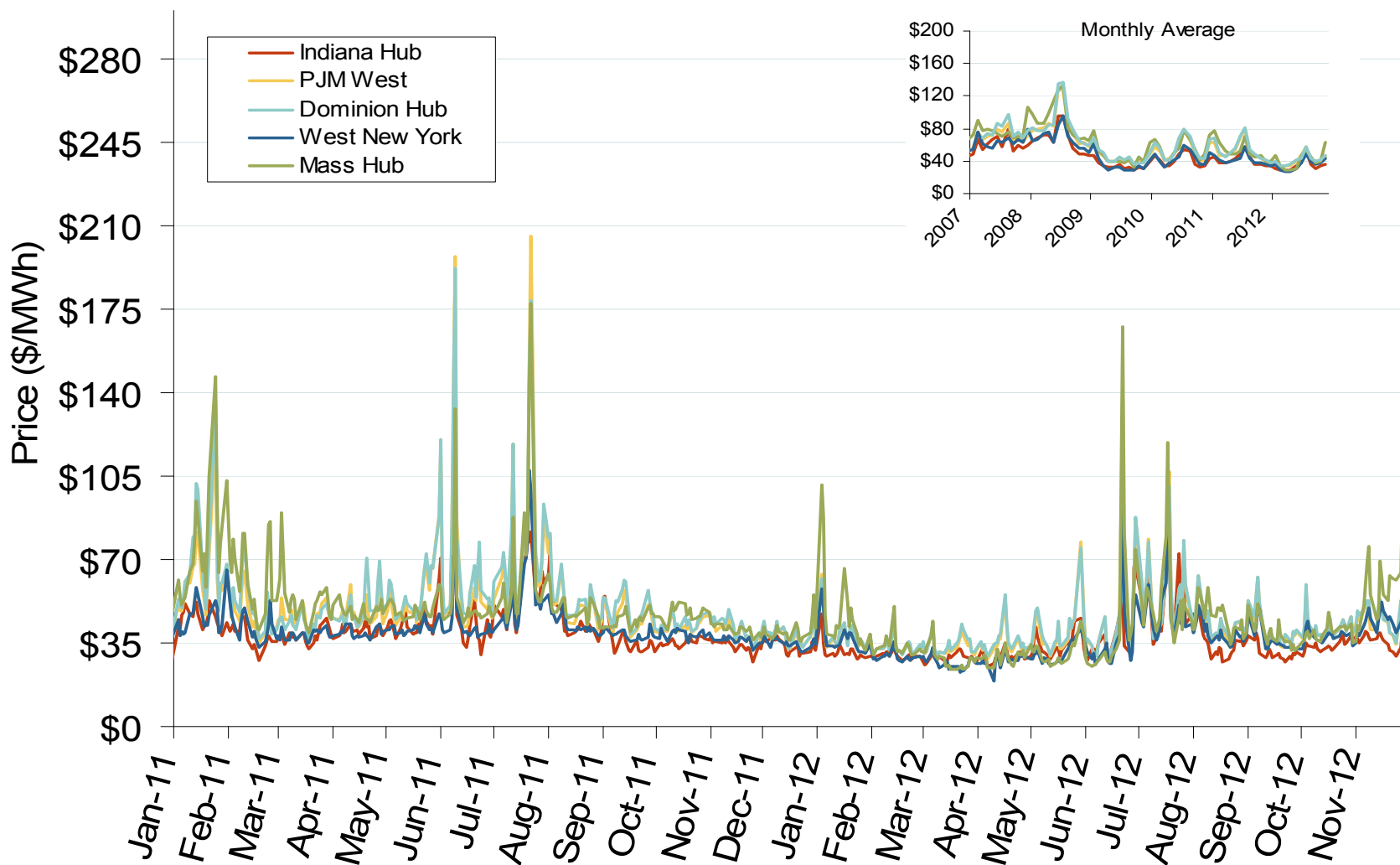
Daily Average of ISO-NE Day-Ahead Prices - All Hours



Daily Average of ISO-NE Day-Ahead Prices - All Hours



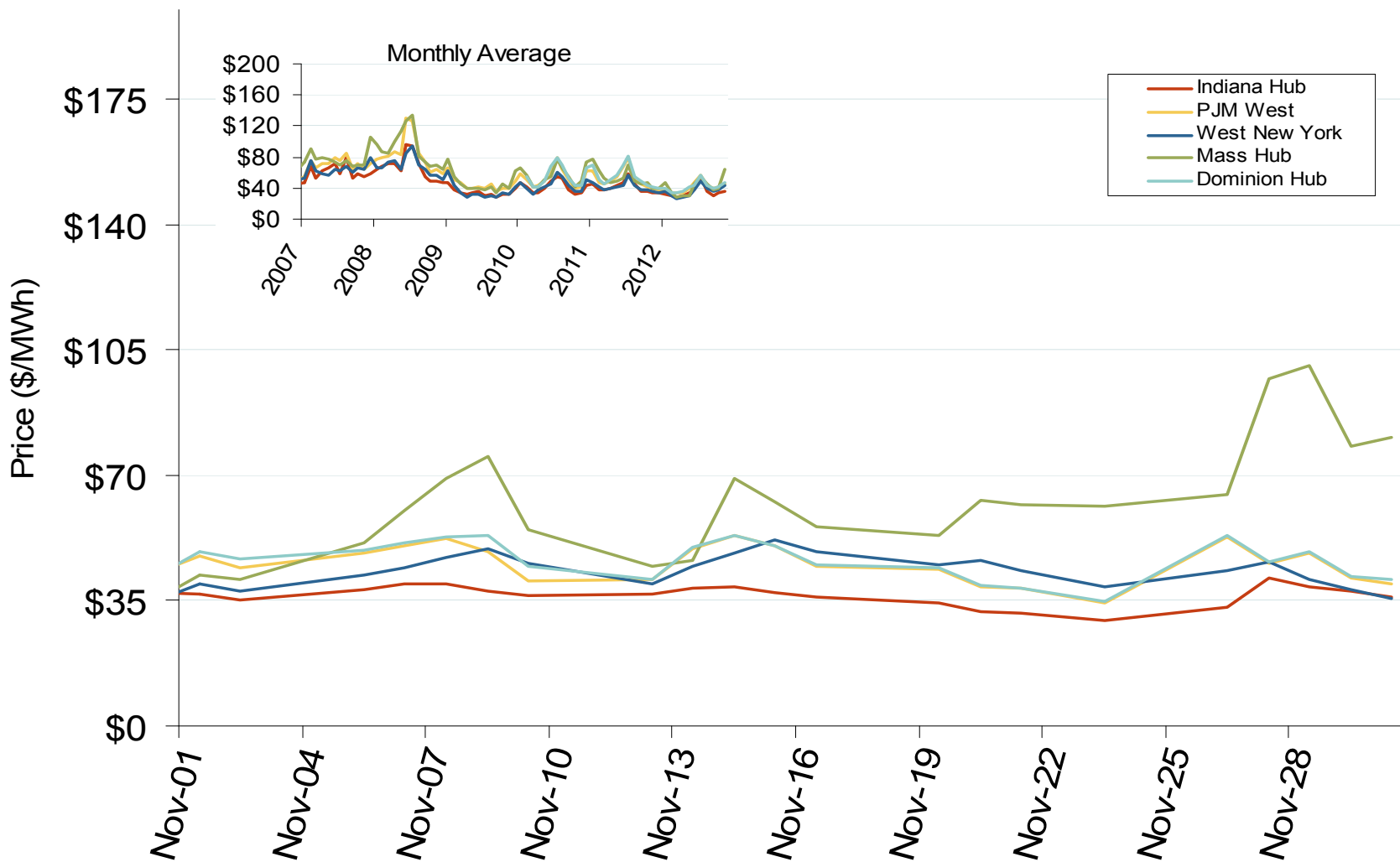
Eastern Daily Index Day-Ahead On-Peak Prices



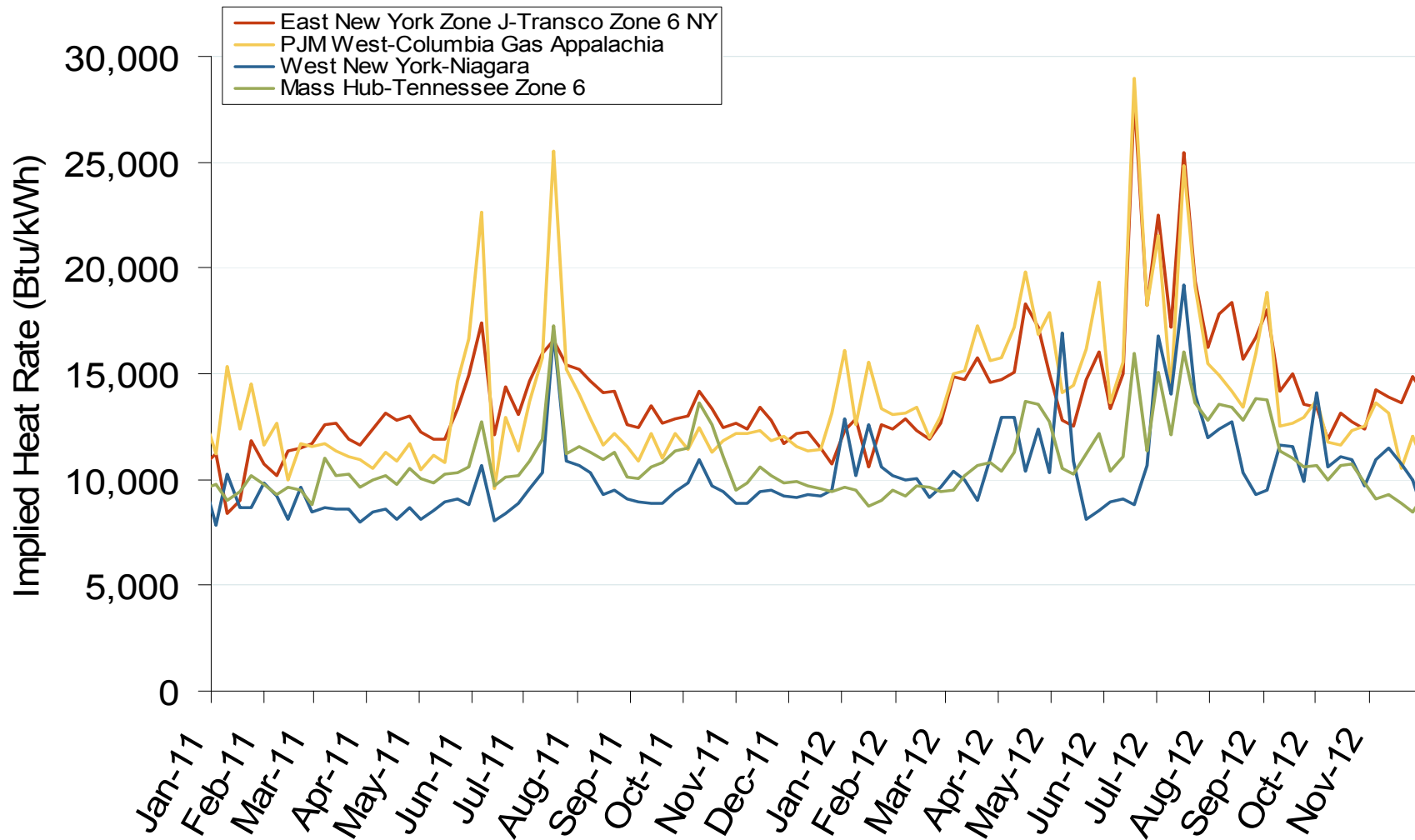
New England Electric Market: Last Month's Eastern Index Prices

Federal Energy Regulatory Commission • Market Oversight • www.ferc.gov/oversight

Eastern Daily Index Day-Ahead On-Peak Prices

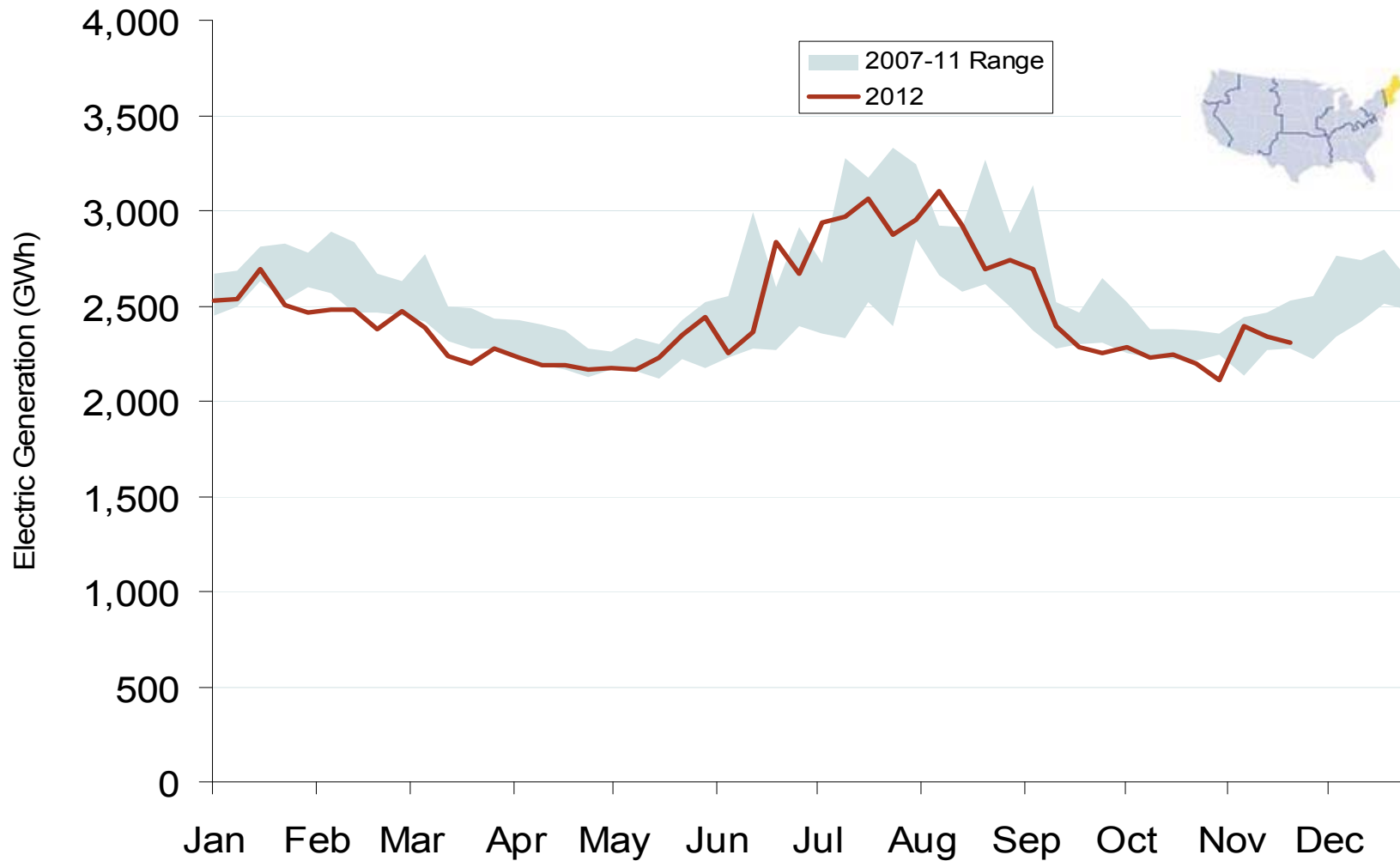


Implied Heat Rates at Eastern Trading Points - Weekly Avgs.



Source: Derived from Platts on-peak electric and natural gas price data
December 2012

Weekly Generation Output New England



New England Electric Forward Price Curves and Implied Heat Rate

