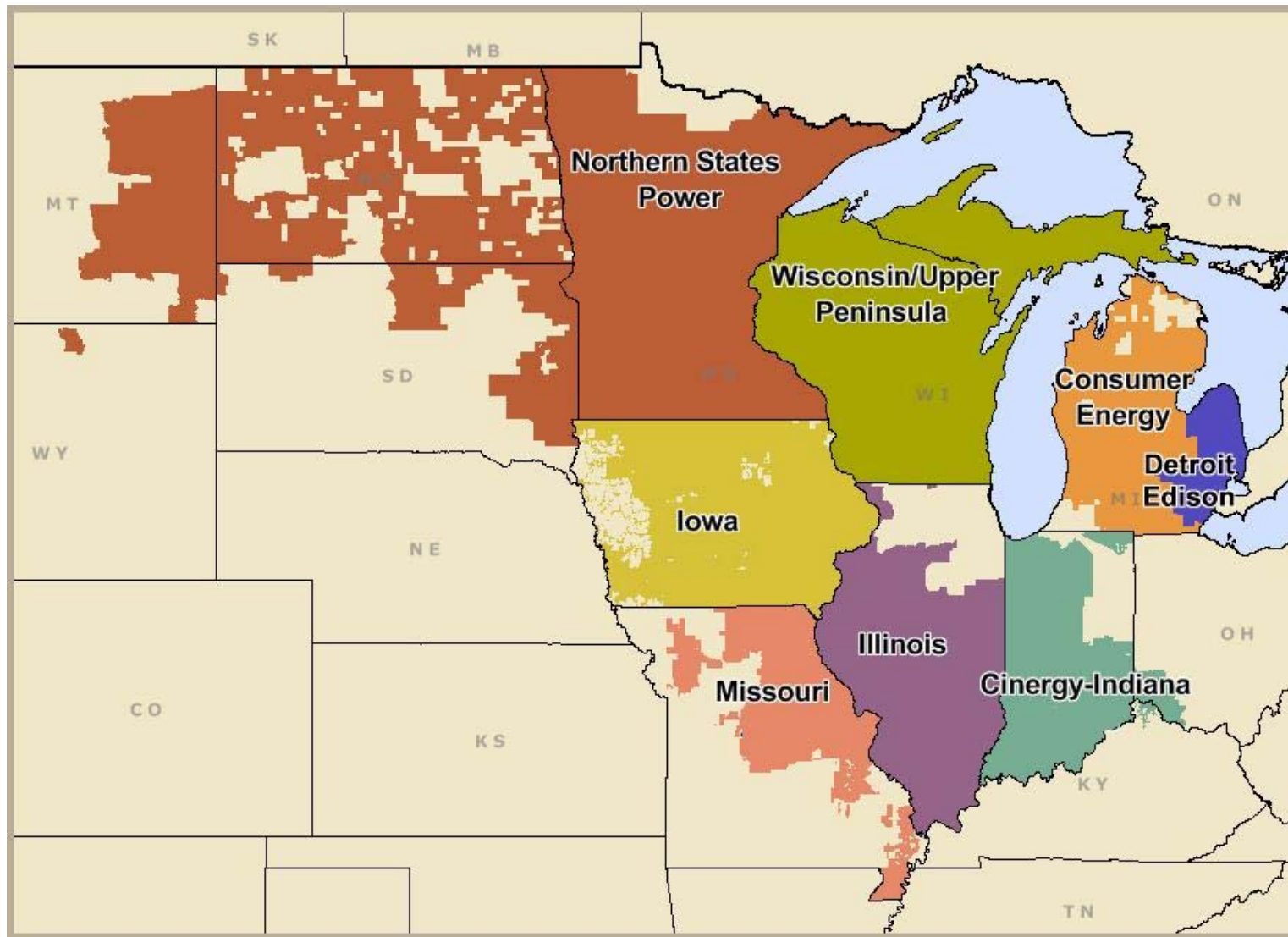


# Midwest Independent System Operator (MISO)



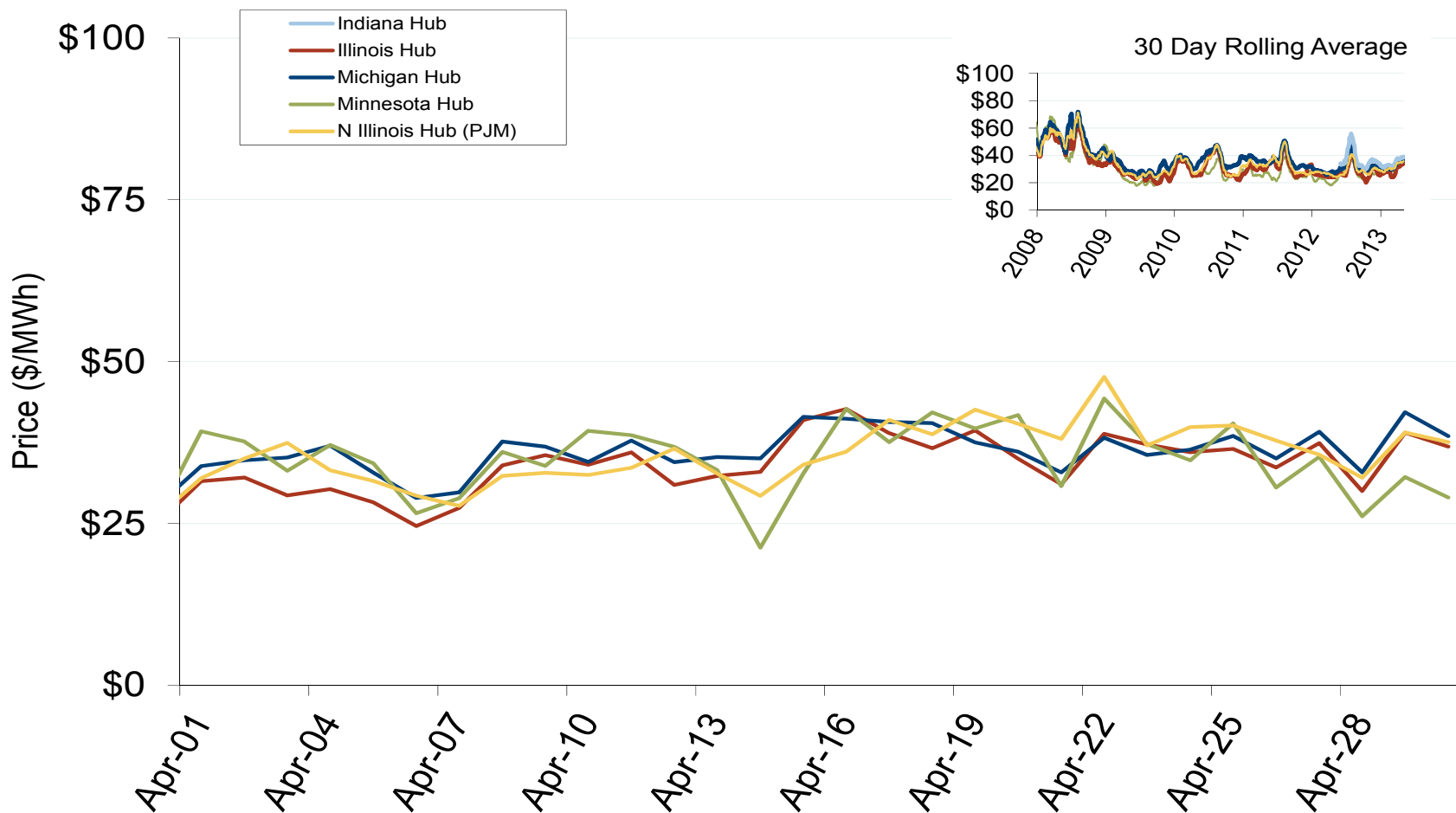
## Midwest Annual Average Bilateral Prices

Annual Average Day Ahead On Peak Prices (\$/MWh)						
	2008	2009	2010	2011	2012	5-Year Avg
Cinergy	\$66.88	\$34.65	\$41.51	\$41.17	\$34.70	\$43.79
Michigan Hub	\$69.15	\$36.56	\$43.68	\$42.73	\$36.17	\$45.67
Minnesota Hub	\$67.46	\$32.09	\$36.86	\$34.57	\$31.55	\$40.52
NI Hub	\$66.13	\$34.47	\$40.85	\$40.31	\$34.65	\$43.29
Illinois Hub	\$62.52	\$31.36	\$38.22	\$38.12	\$31.92	\$40.44
MAPP South	\$69.18	\$33.31	\$37.60	\$35.48	\$29.43	\$41.04

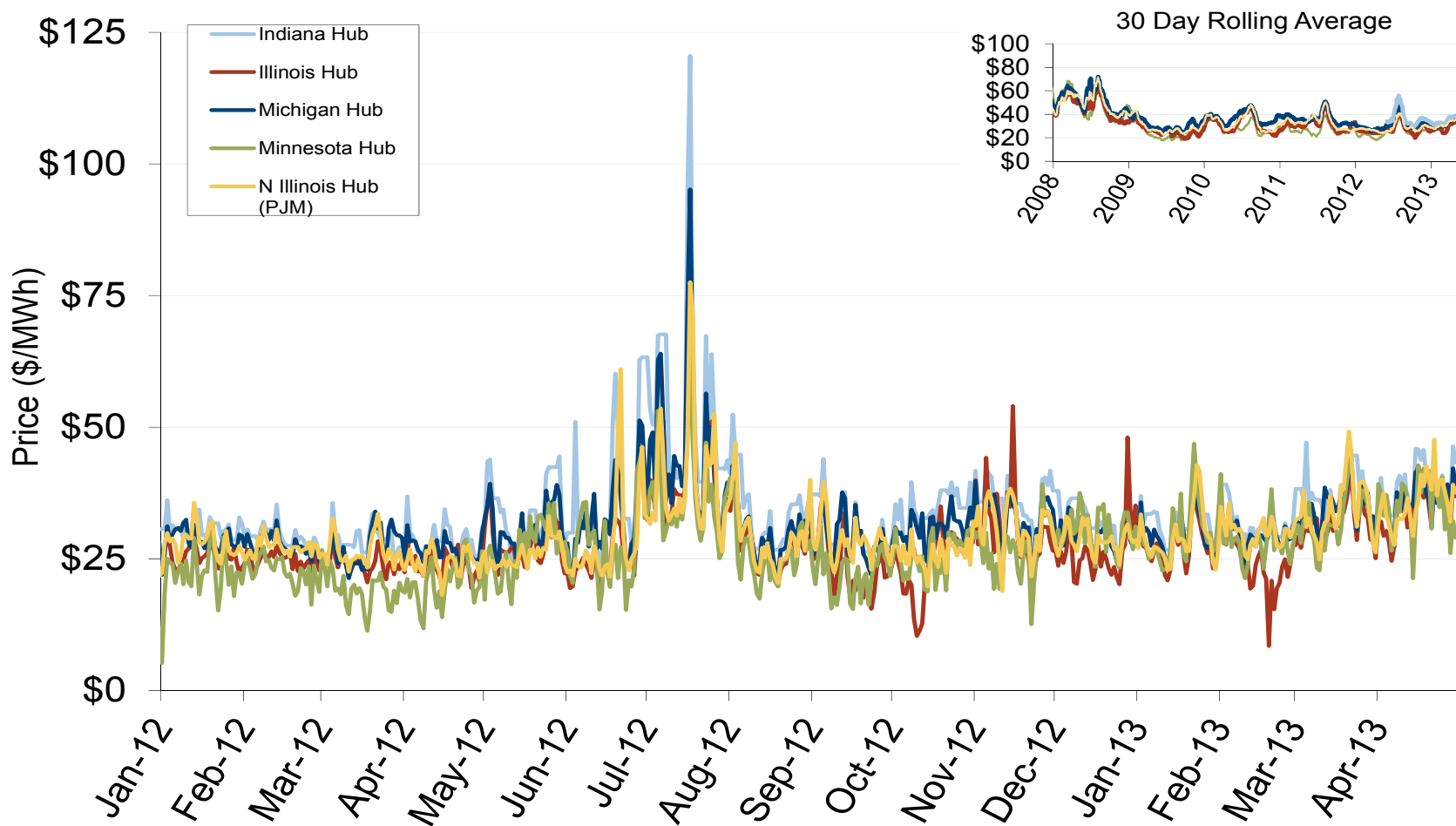
Midwest Electric Market: Last Month's RTO Prices

Federal Energy Regulatory Commission • Market Oversight • [www.ferc.gov/oversight](http://www.ferc.gov/oversight)

## Daily Average of MISO Day-Ahead Prices - All Hours



## Daily Average of MISO Day-Ahead Prices - All Hours



Source: Derived from Bloomberg data

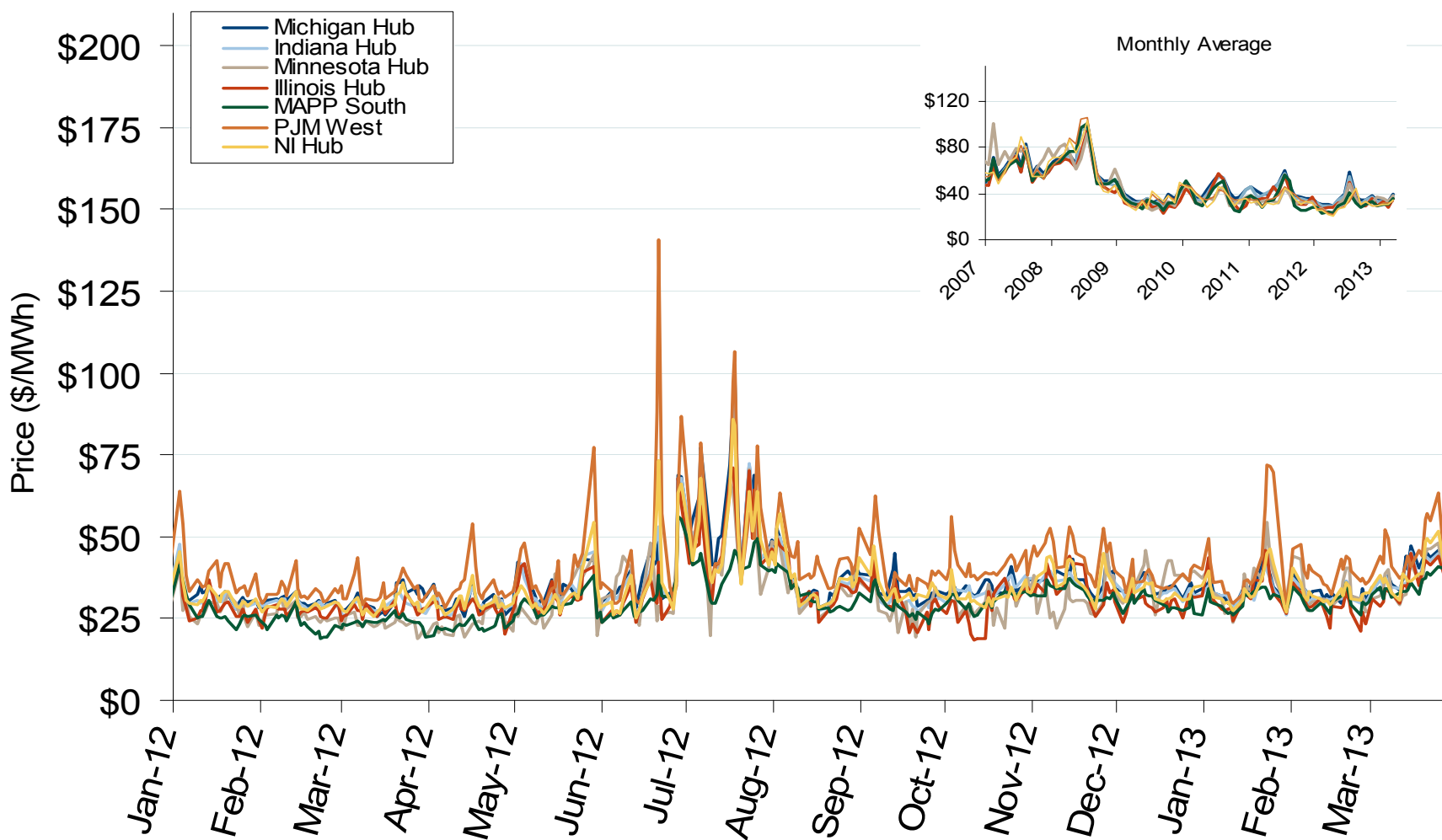
May 2013

Updated: May 22, 2013

**Midwest Electric Market: MISO/PJM Index Prices**

Federal Energy Regulatory Commission • Market Oversight • [www.ferc.gov/oversight](http://www.ferc.gov/oversight)

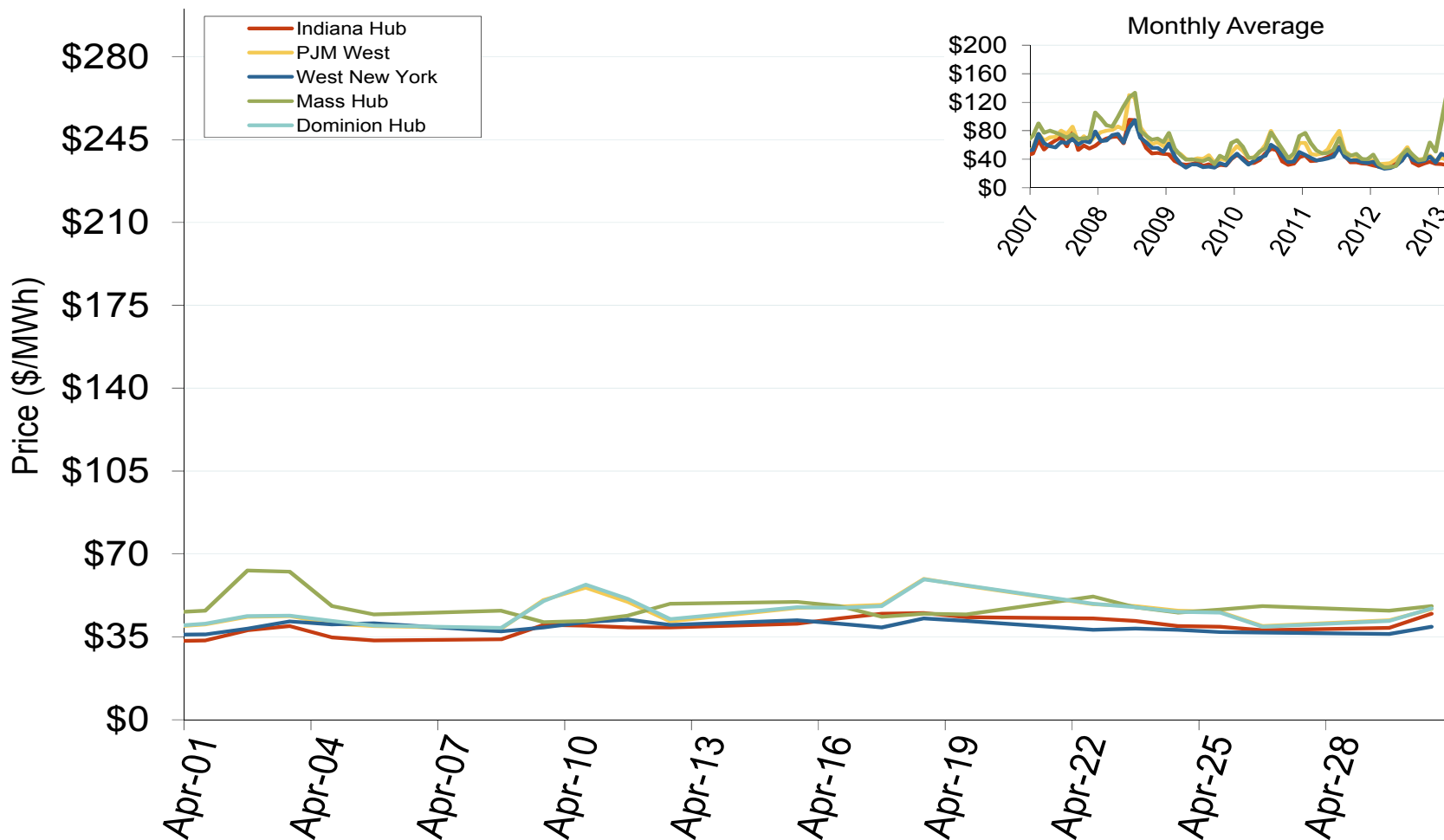
**MISO/PJM Index Day-Ahead On-Peak Prices**



Midwest Electric Market: Last Month's Eastern Index Prices

Federal Energy Regulatory Commission • Market Oversight • [www.ferc.gov/oversight](http://www.ferc.gov/oversight)

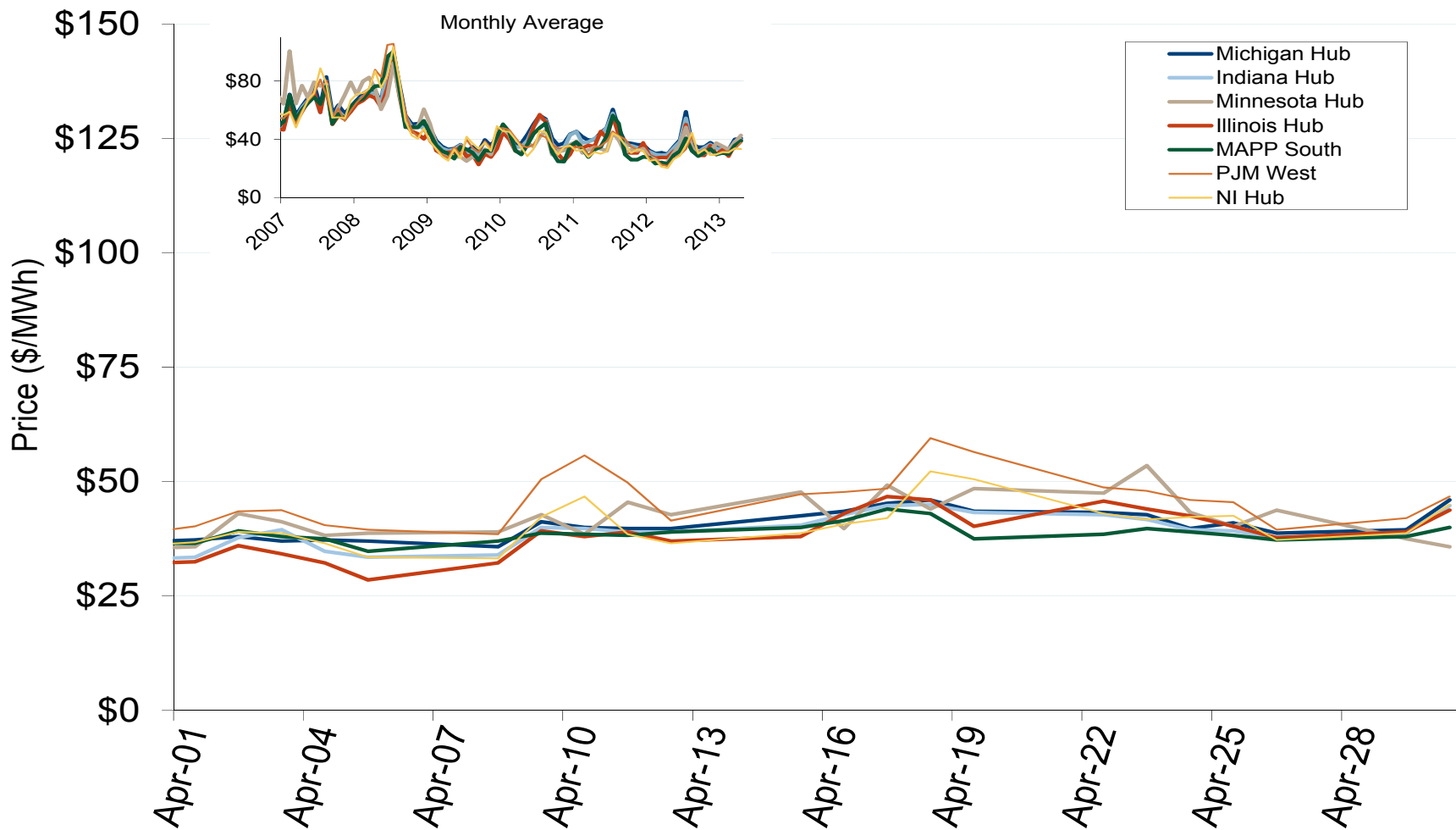
## Eastern Daily Index Day-Ahead On-Peak Prices



Midwest Electric Market: Last Month's MISO/PJM Index Prices

Federal Energy Regulatory Commission • Market Oversight • [www.ferc.gov/oversight](http://www.ferc.gov/oversight)

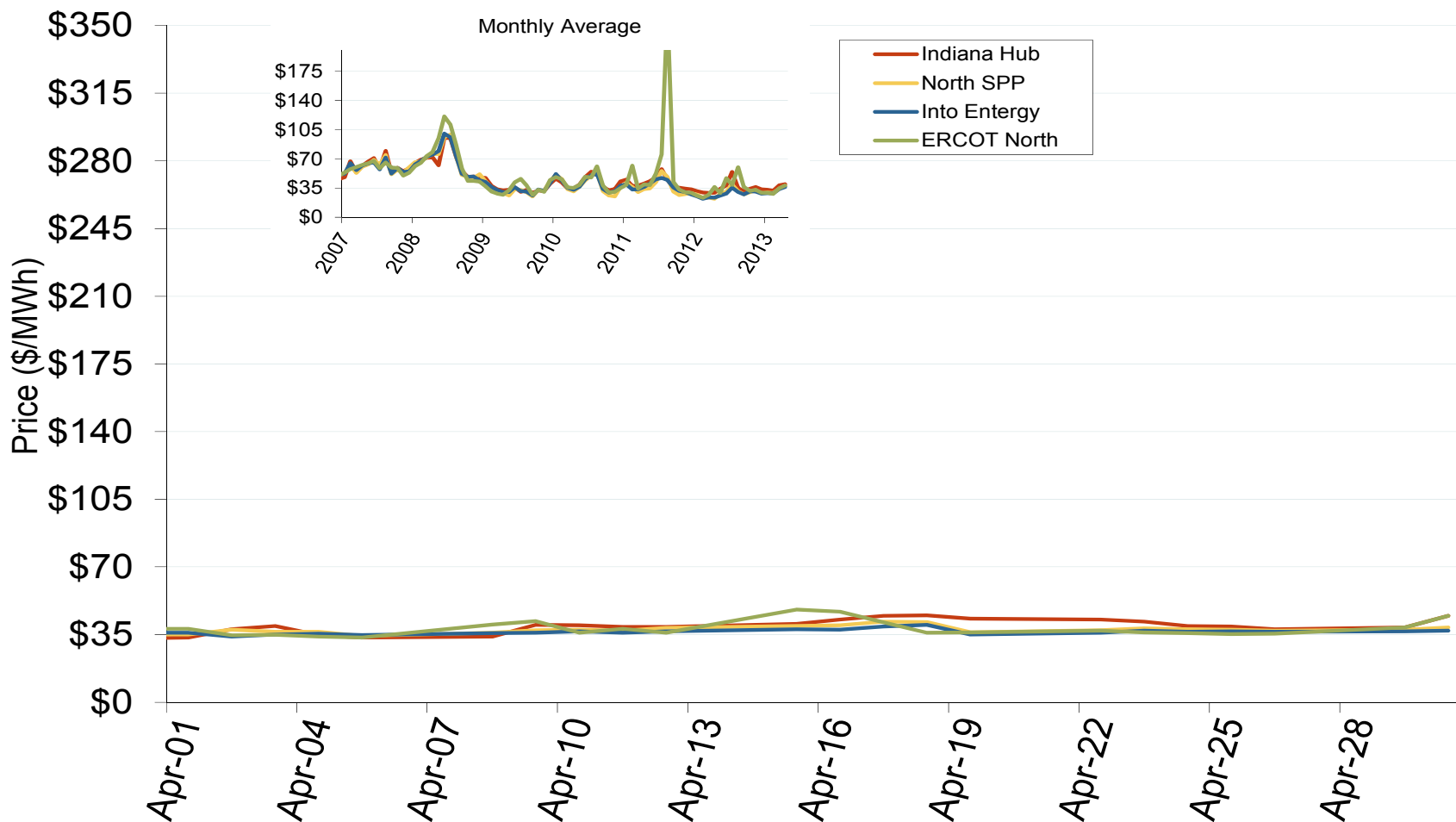
## MISO/PJM Index Day-Ahead On-Peak Prices



Midwest Electric Market: Last Month's Midwestern Index Prices

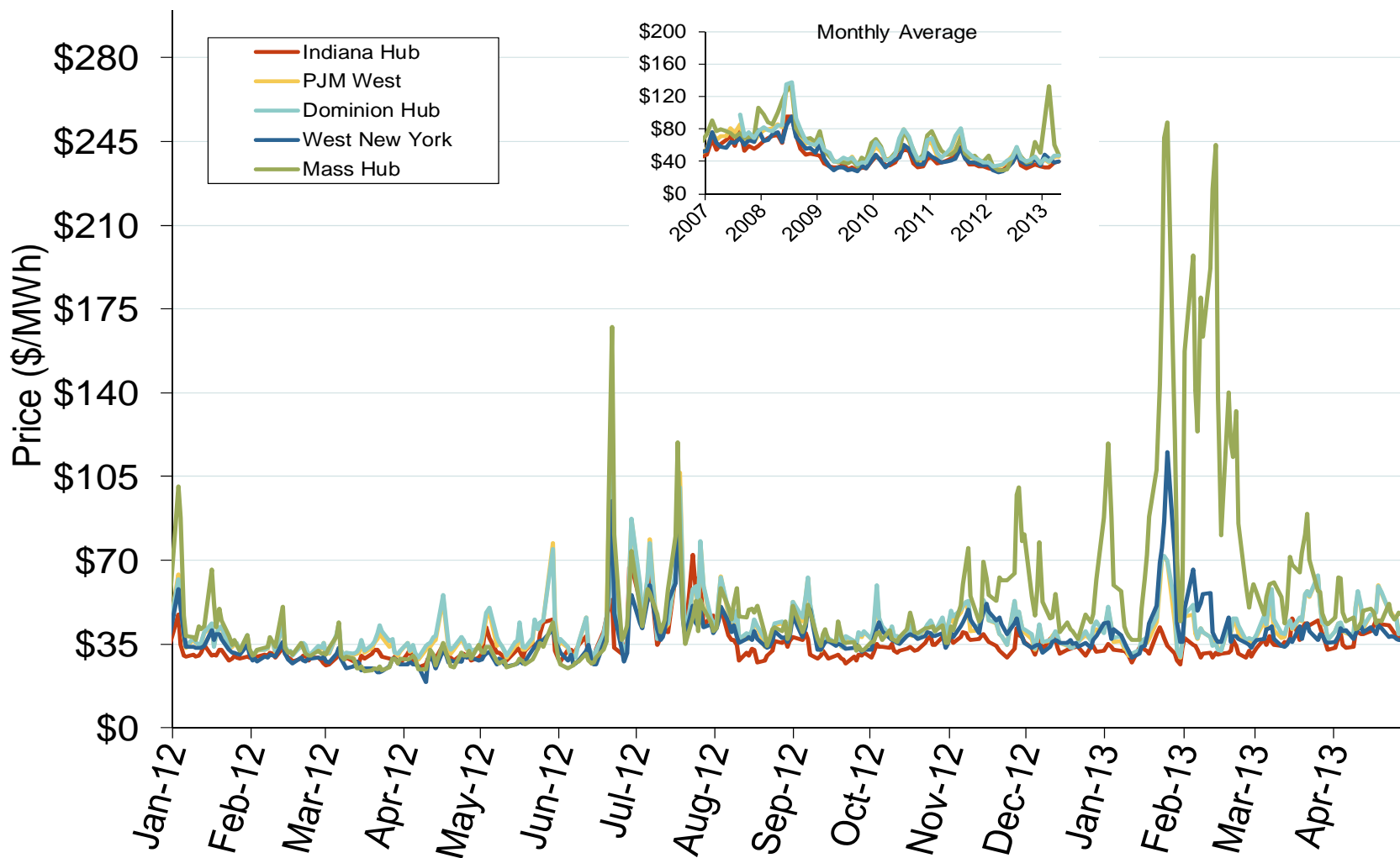
Federal Energy Regulatory Commission • Market Oversight • [www.ferc.gov/oversight](http://www.ferc.gov/oversight)

## Midwestern Daily Index Day-Ahead On-Peak Prices



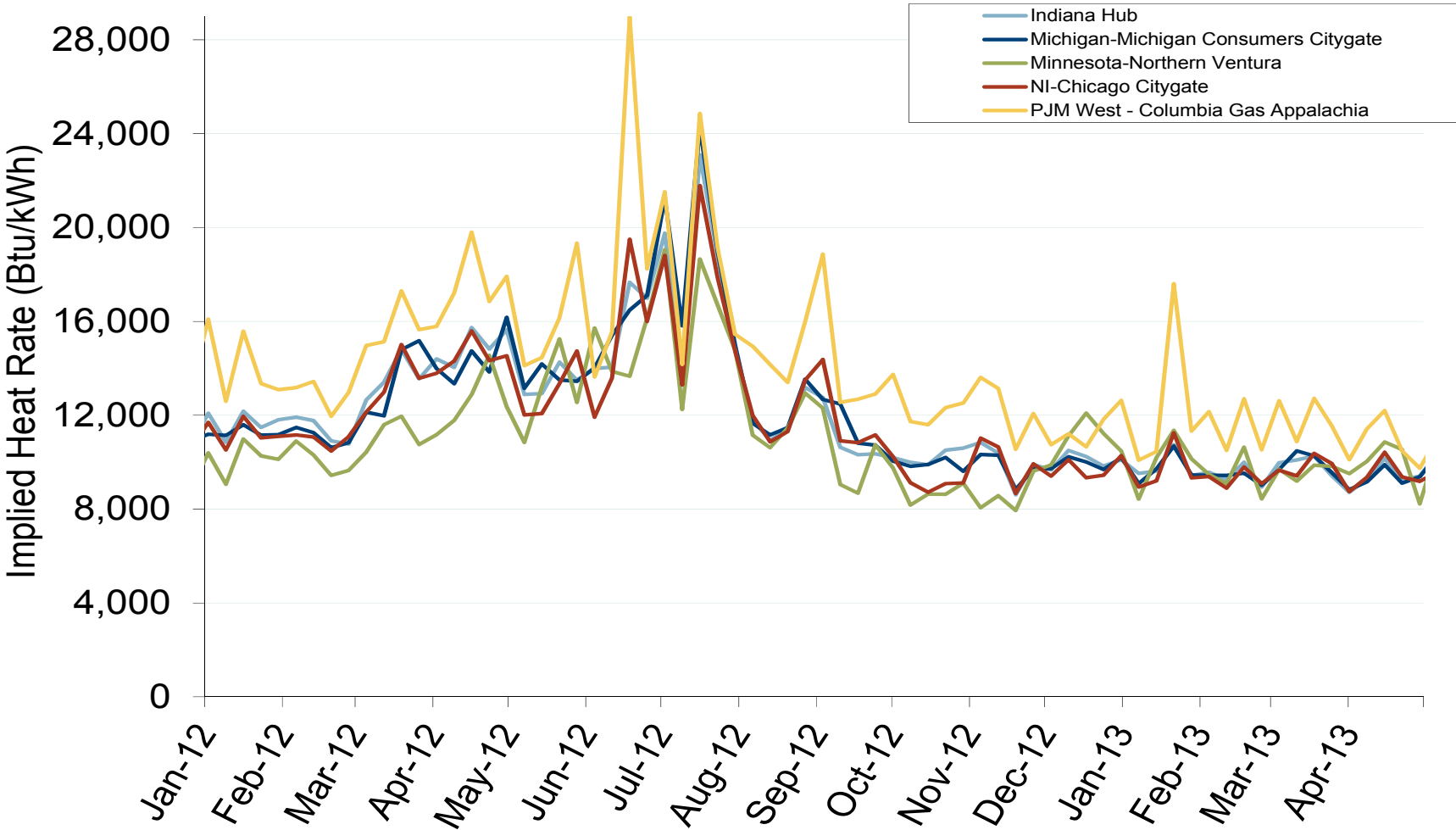


## Eastern Daily Index Day-Ahead On-Peak Prices



Federal Energy Regulatory Commission • Market Oversight • [www.ferc.gov/oversight](http://www.ferc.gov/oversight)

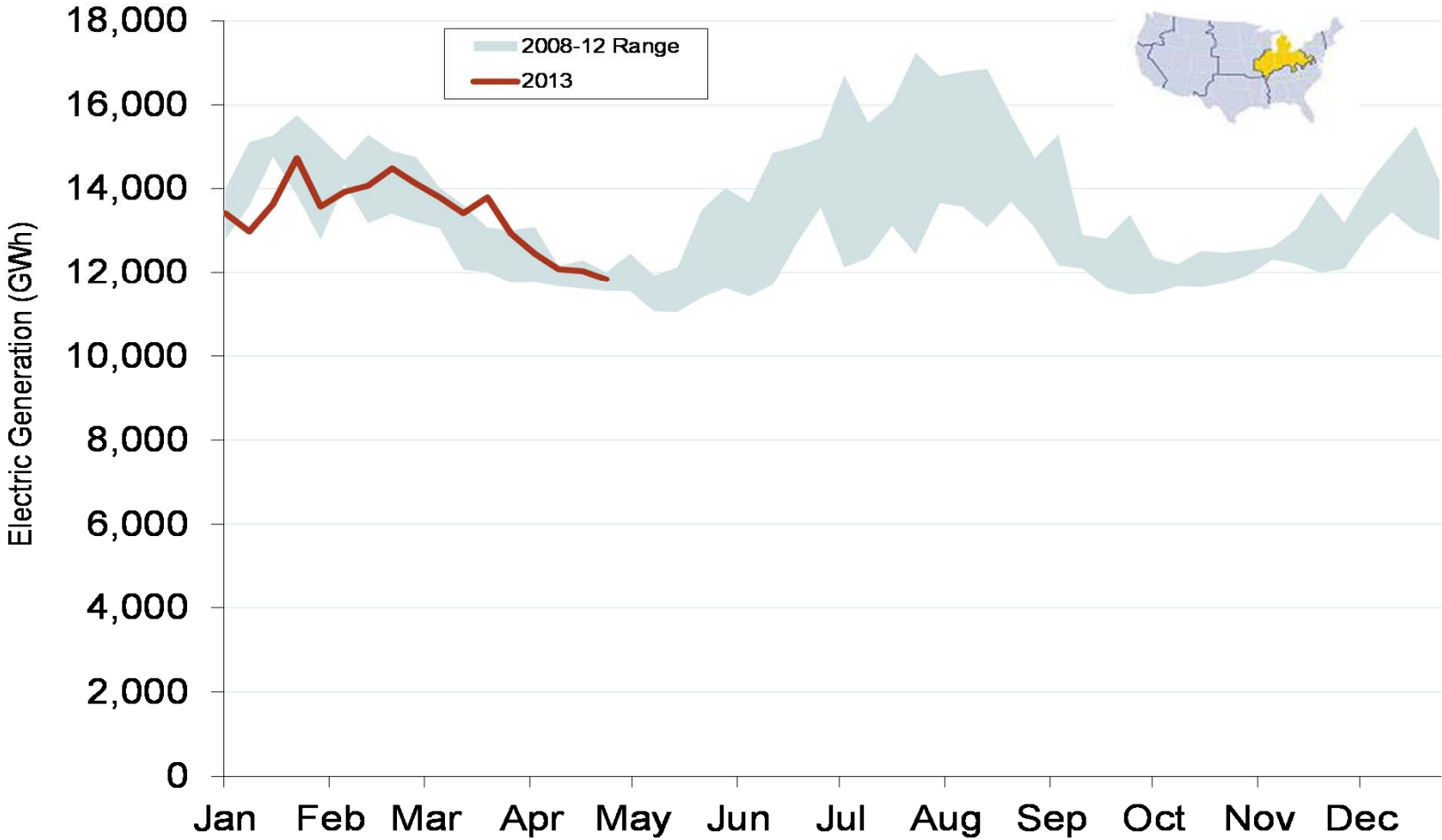
# Implied Heat Rates at MISO and PJM Hubs - Weekly Averages



Source: Derived from *Platts* on-peak electric and natural gas price data  
May 2013

Updated: May 22, 2013

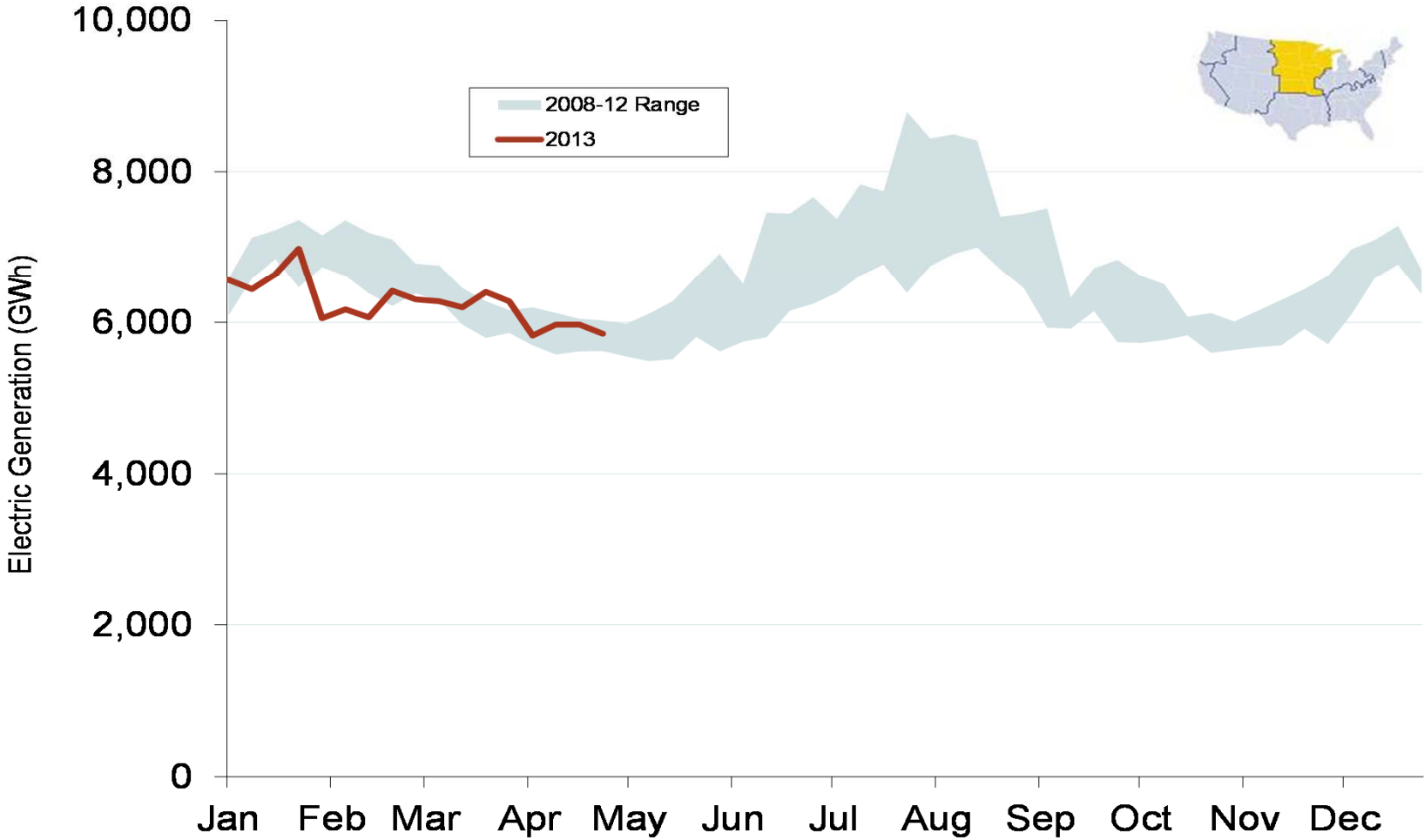
# Weekly Generation Output - Central Industrial Region



Source: Derived from *EEI* data  
May 2013

Updated: May 23, 2013

# Weekly Generation Output - West Central



Source: Derived from *EEI* data  
May 2013

Updated: May 23, 2013