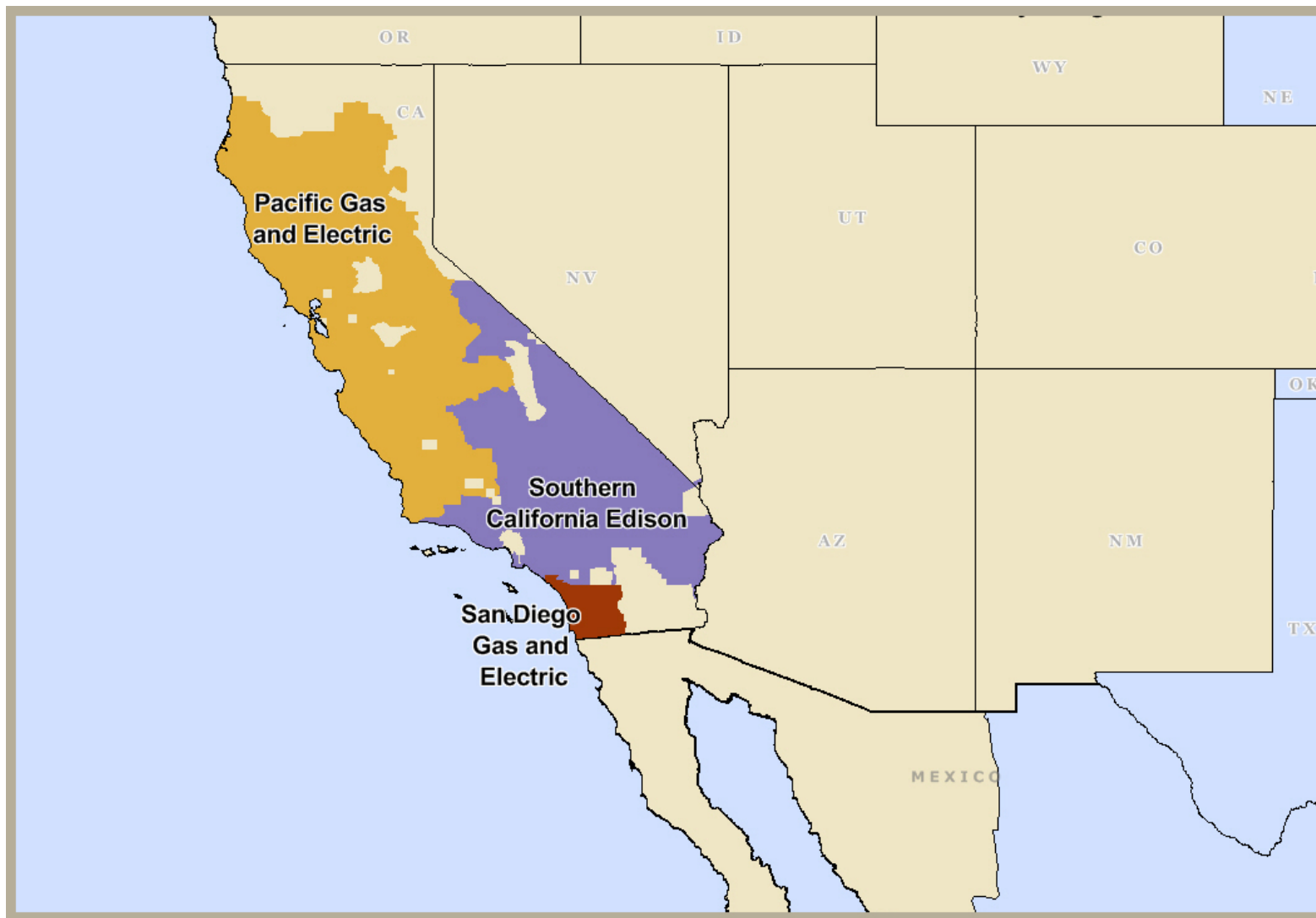


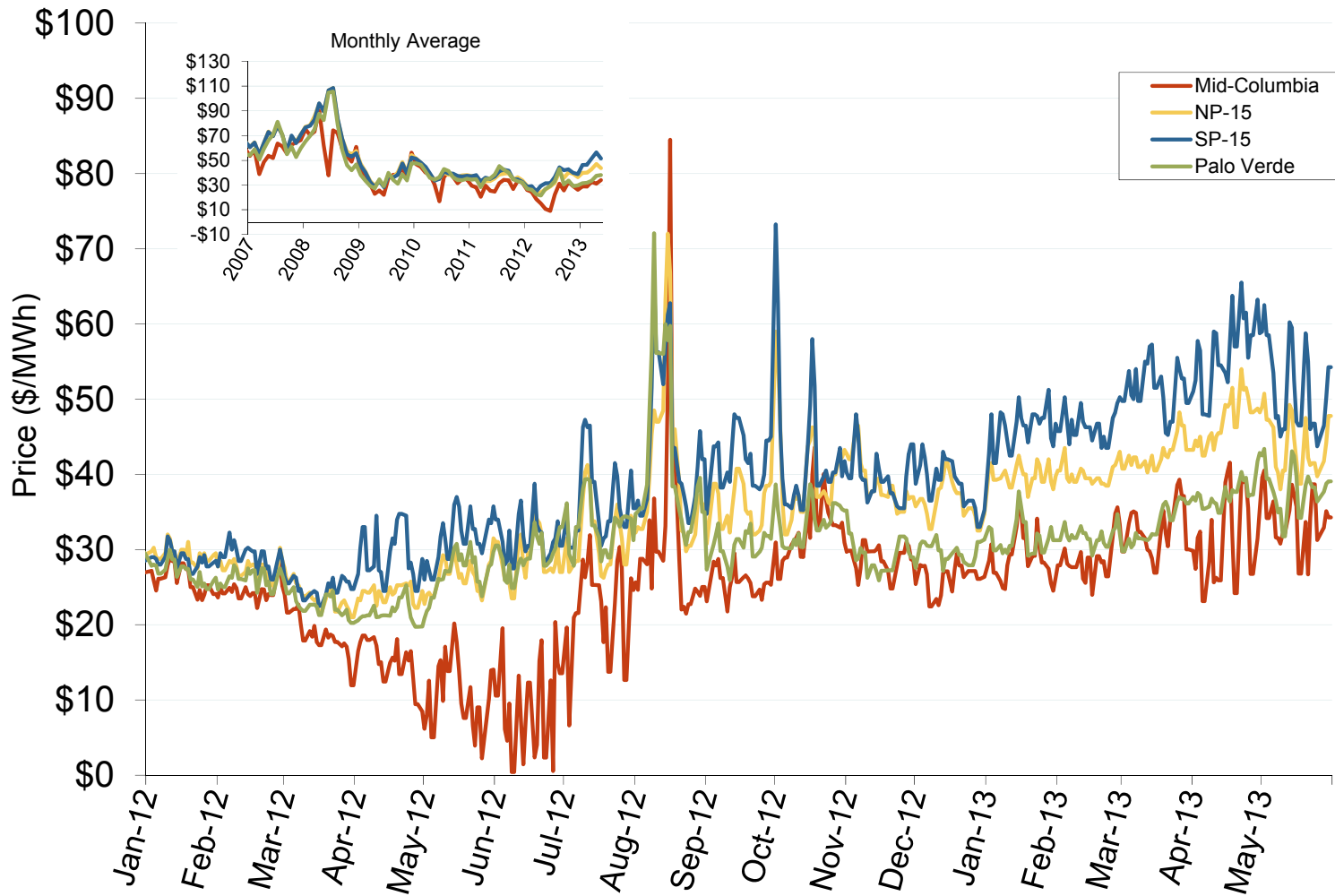
California Independent System Operator (CAISO)



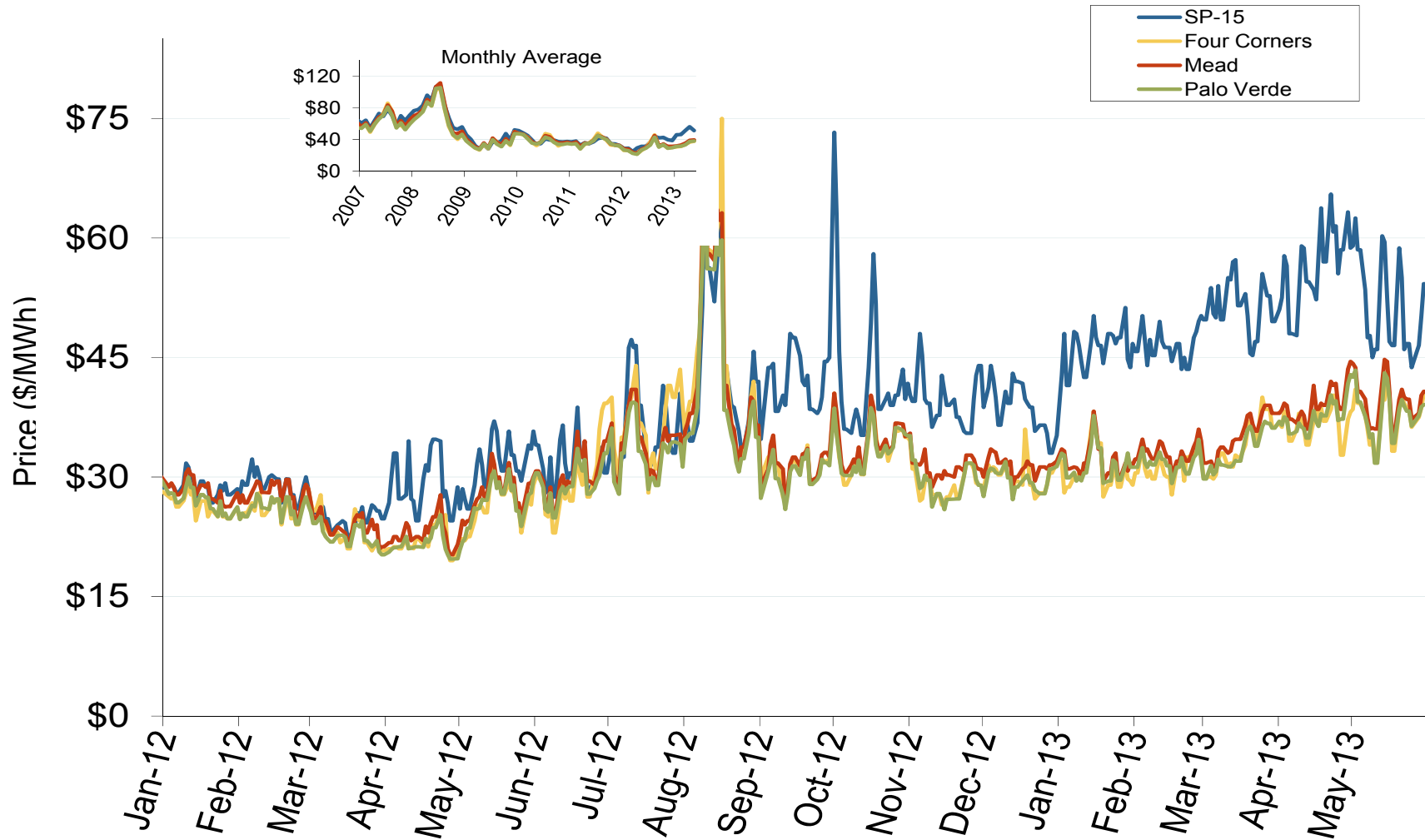
California Annual Average Bilateral Prices

Annual Average Day Ahead On Peak Prices (\$/MWh)						
	2008	2009	2010	2011	2012	5-Year Avg
NP15	\$80.14	\$39.29	\$40.08	\$35.81	\$32.02	\$45.49
SP15	\$79.36	\$38.31	\$40.21	\$36.87	\$34.91	\$45.96

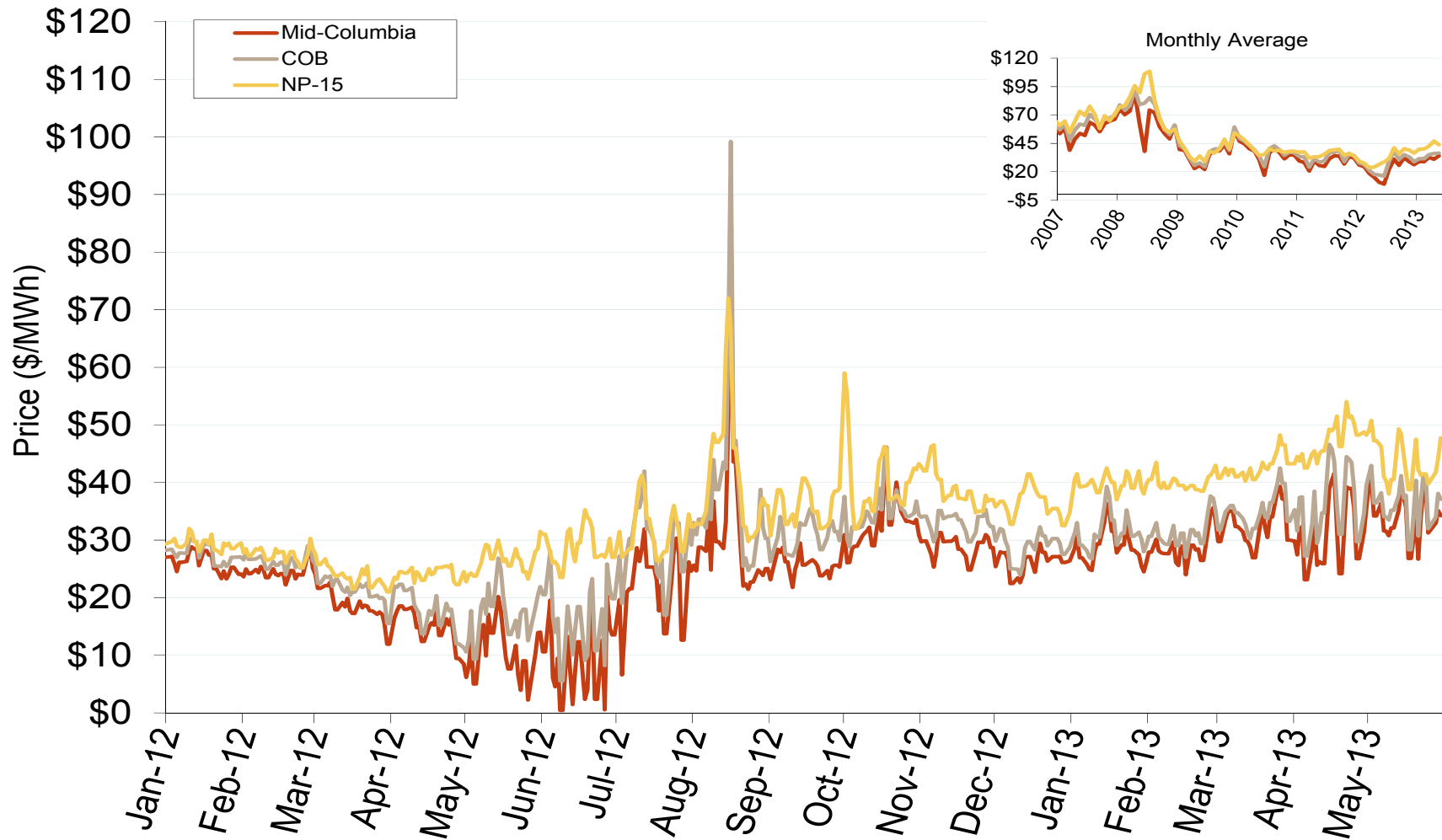
Western Daily Index Day-Ahead On-Peak Prices



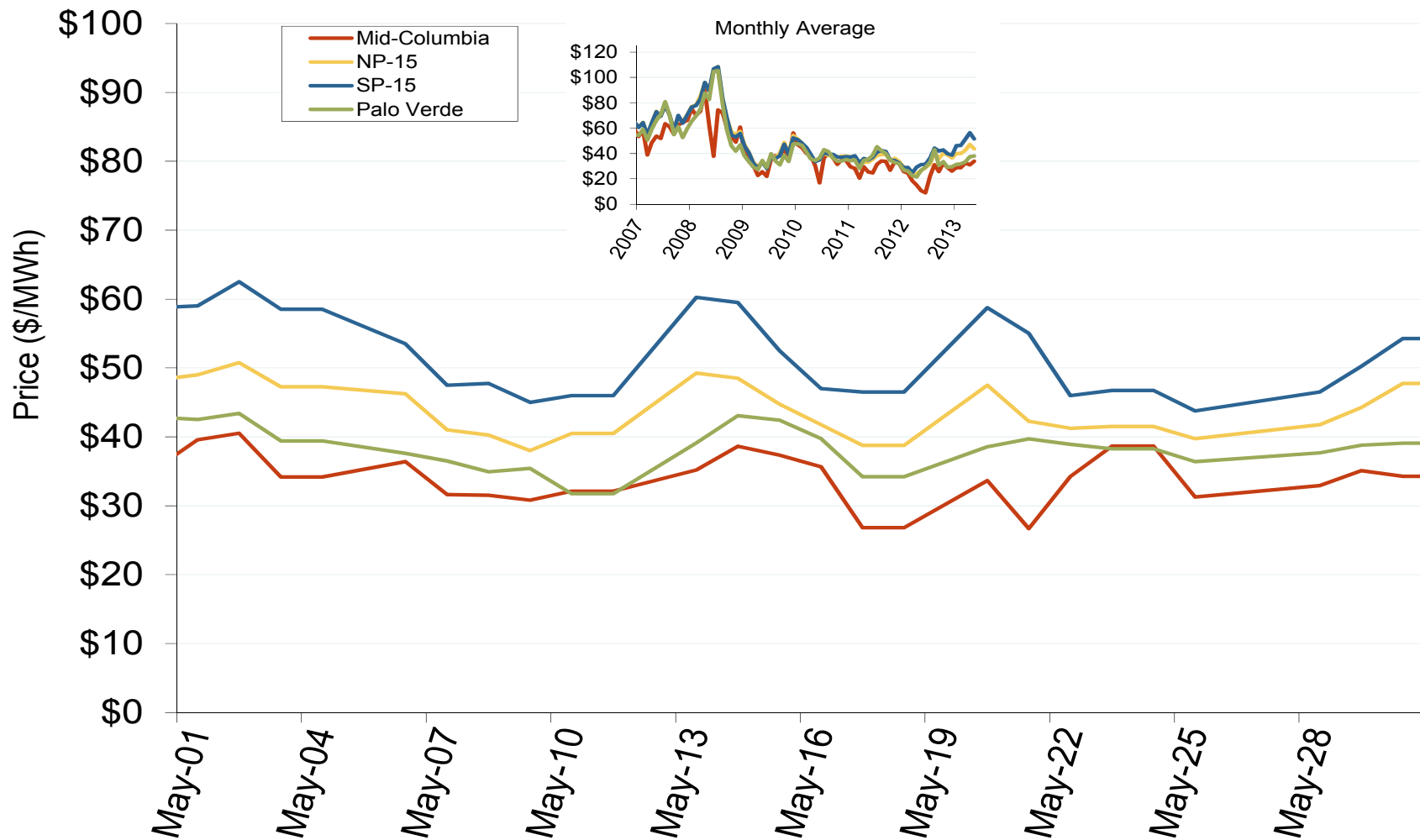
Southwestern Daily Index Day-Ahead On-Peak Prices



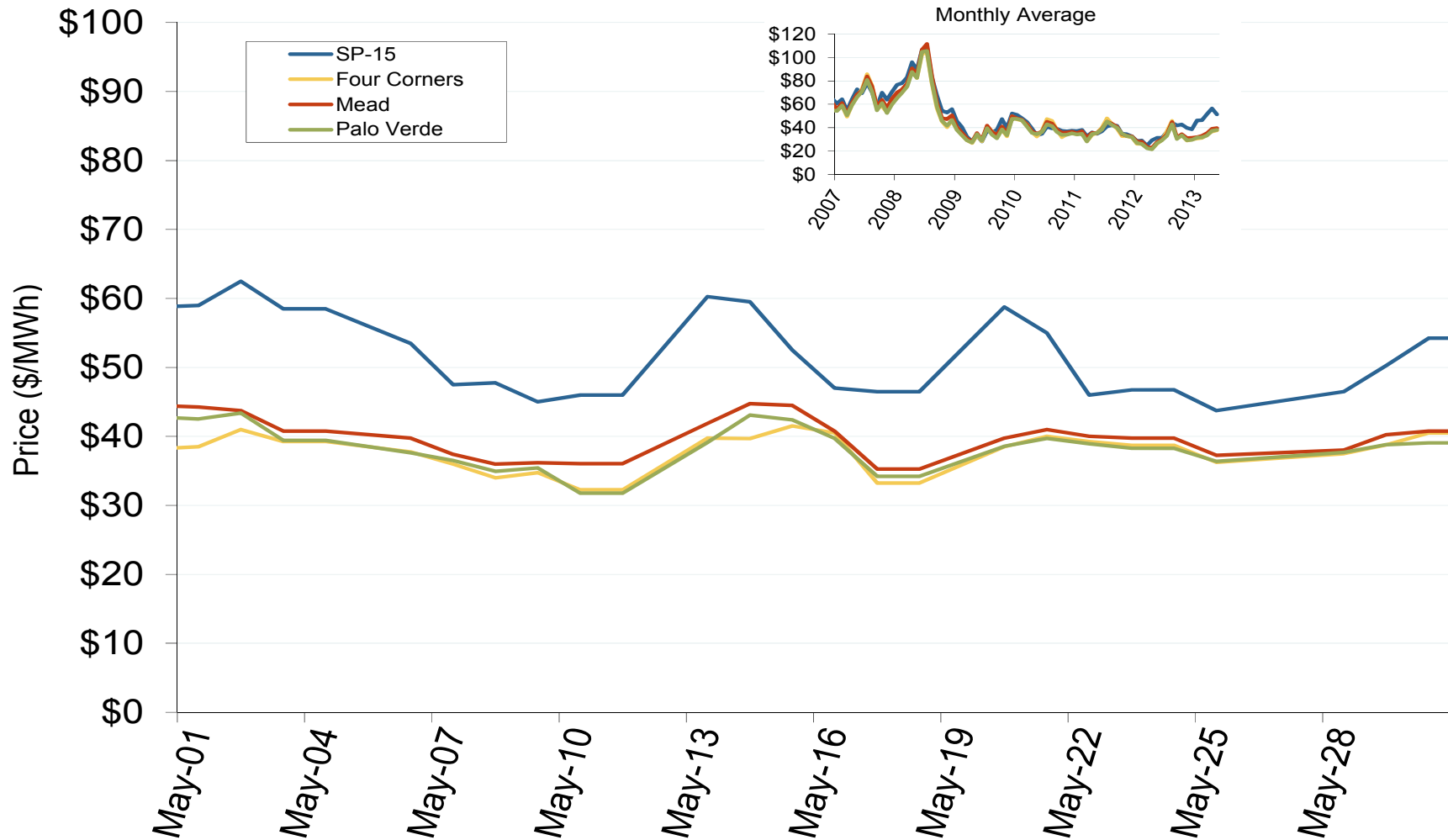
Northwestern Daily Index Day-Ahead On-Peak Prices



Western Daily Index Day-Ahead On-Peak Prices



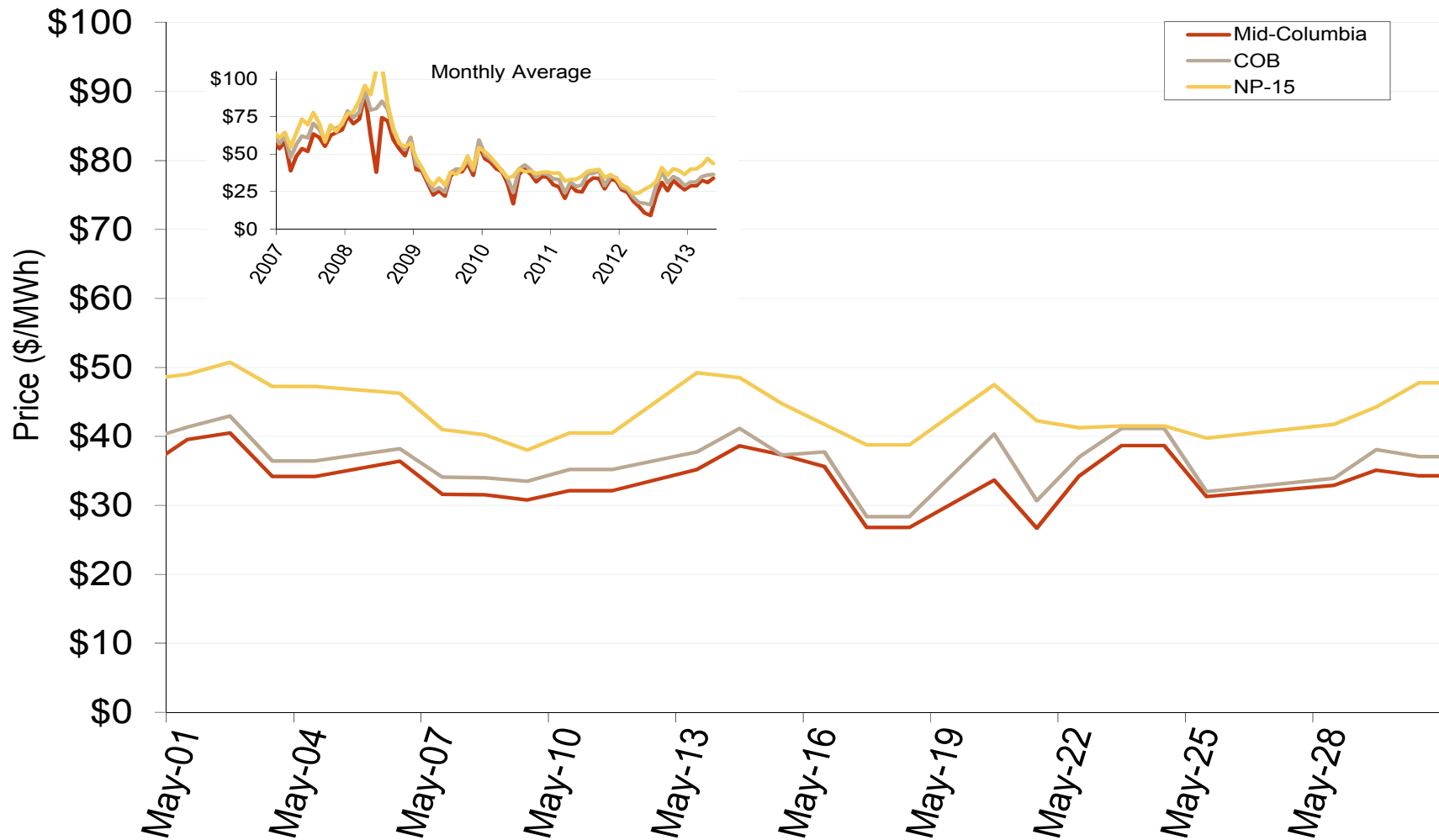
Southwestern Daily Index Day-Ahead On-Peak Prices



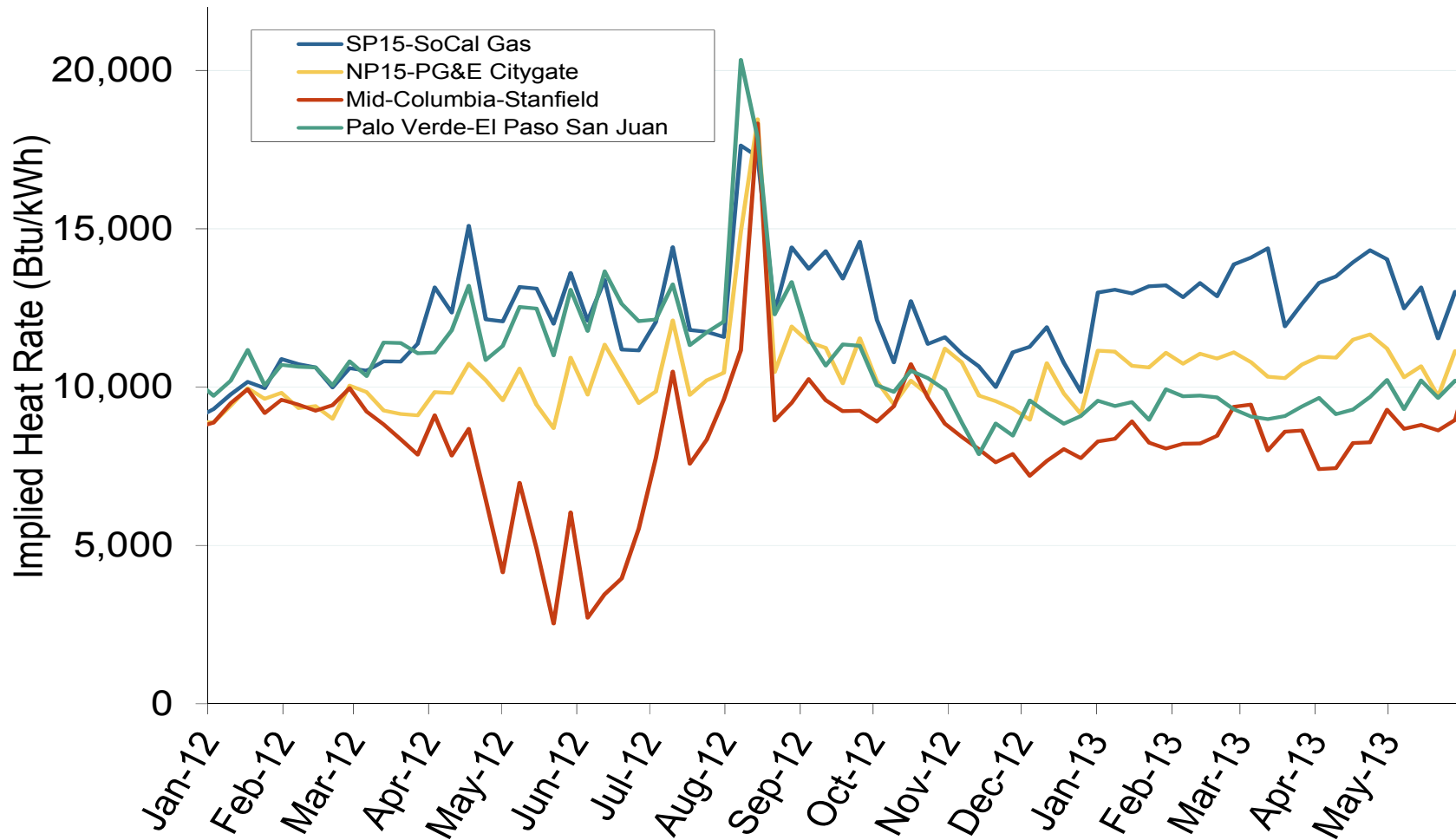
California Electric Market: Last Month's Northwestern Index Prices

Federal Energy Regulatory Commission • Market Oversight • www.ferc.gov/oversight

Northwestern Daily Index Day-Ahead On-Peak Prices



Implied Heat Rates at Western Trading Points - Weekly Avgs.

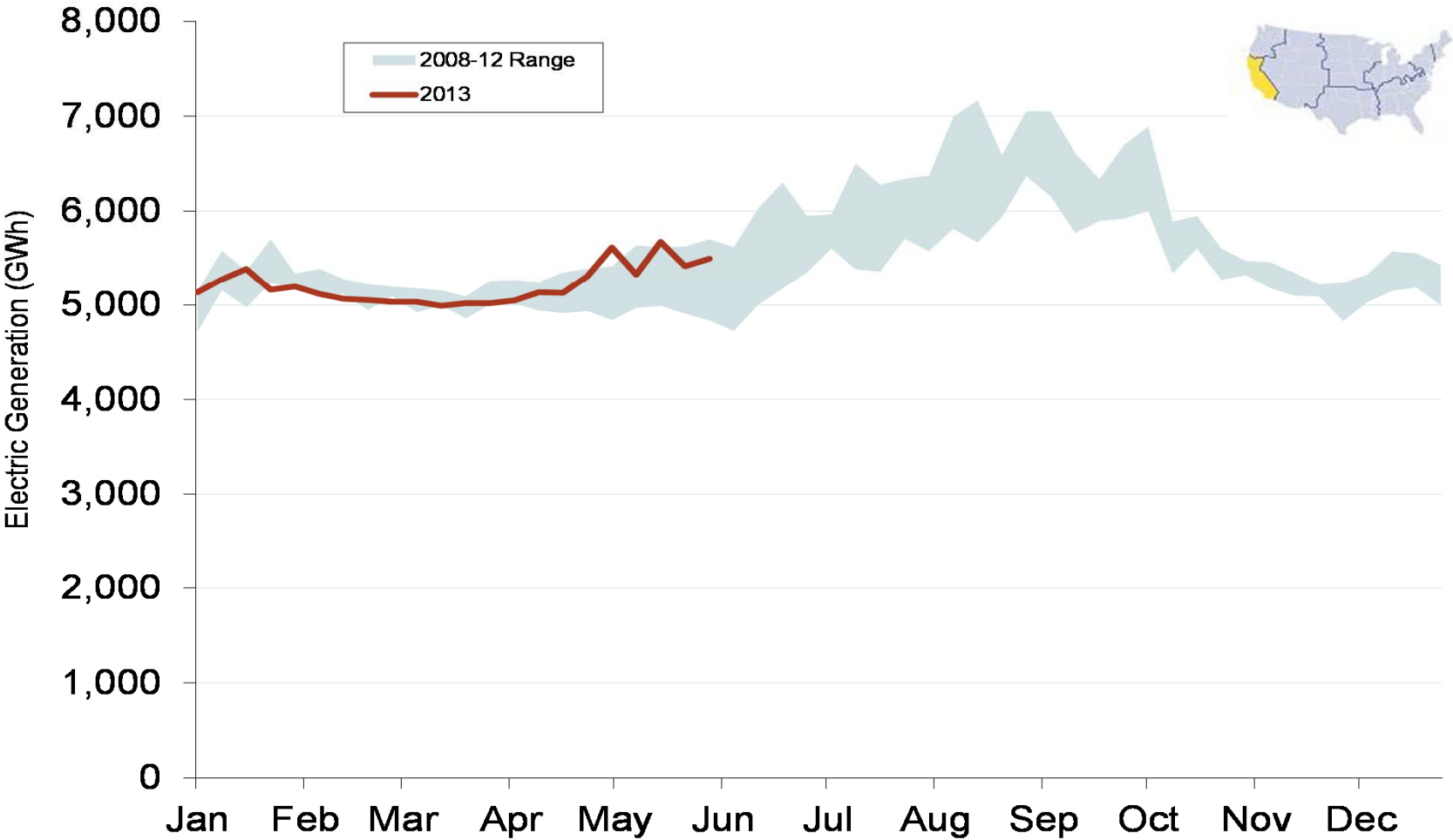


Note: ICE on-peak forward (physical) and swap (financial) volumes are for Mid-Columbia and include monthly, dual monthly, quarterly, and calendar year contracts traded for each month.

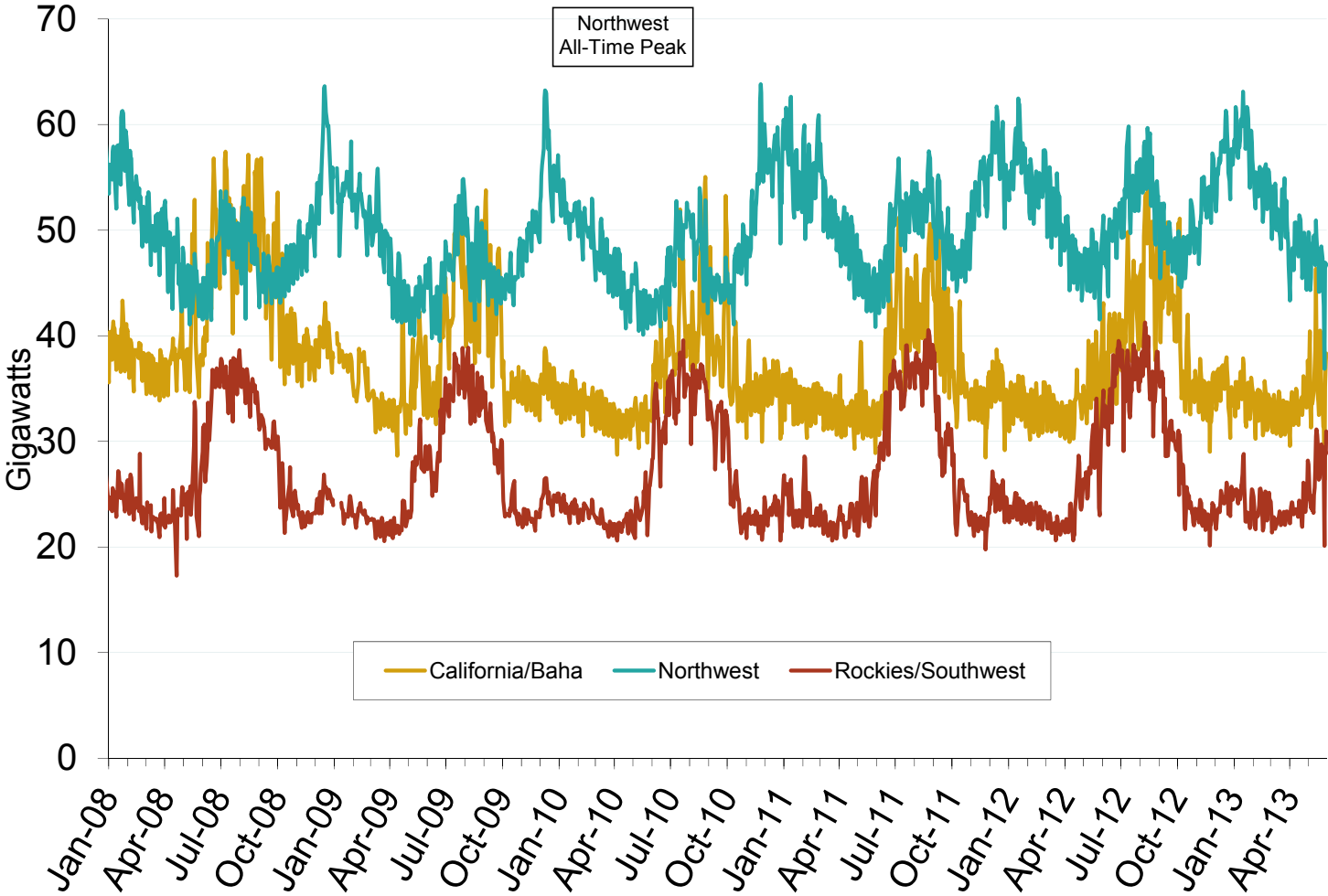
Source: Derived from Platts on-peak electric and natural gas price data

Updated: June 06, 2013

Weekly Generation Output - California



Western Daily Actual Peak Demand



Notes: Data prior to 9/14/2010 does not include weekends and holidays. Some data for 12/31/2008 – 1/9/2009 are not available from WECC
Source: Derived from WECC Daily Report data available at <http://wecc.biz>
June 2013