



The Great Basin Landscape Conservation Cooperative

May 2011

The Great Basin Landscape Conservation Cooperative

What is the Great Basin Landscape Conservation Cooperative?

The Great Basin Landscape Conservation Cooperatives (LCC) is one of 21 LCCs nationwide established by the Department of the Interior (DOI) to better integrate science and management to address climate change and related issues. The Great Basin LCC is a self-directed partnership between bureaus and others involved in natural resource management and conservation.

What will the Great Basin LCC do?

In broad terms, the Great Basin LCC will help link and integrate DOI proposed Climate Science Centers with resource managers and science users; bring additional DOI resources to bear on landscape-scale issues and opportunities; and help to apply science and facilitate coordination on a wide range of efforts to respond to climate change, invasive species, wildfires, human development and other stressors across the Great Basin. Specific objectives and shared priorities will be determined by the partnership itself. The LCC is not intended to replace existing organizations already accomplishing conservation work in the Great Basin. The aim is to facilitate, enhance and inform that work.



Mission

The Great Basin LCC enhances understanding of the effects of changing climate and other natural and human impacts across the region and promotes the coordination of science-based actions to enable human and natural communities to respond and adapt to those conditions.

The Great Basin LCC accomplishes this mission through:

- Providing leadership and a framework linking science and management to address shared ecological, climate, and social and economic issues across the basin.
- Focusing science and management actions to sustain natural resources in the context of changing environmental conditions.
- Enhancing collaboration to integrate science and management among Great Basin LCC partners particularly as related to climate change and other landscape-scale change agents.
- Promoting communication and education.

How was the Great Basin LCC organized?

The Bureau of Land Management, with the assistance of the US Fish and Wildlife Service, led the startup of the Great Basin LCC by engaging potential partners including Federal and State agencies; Tribes; many existing regional, state and local partnerships; non-governmental

organizations; universities; private landowners; and others. Meetings and webinars were held throughout the basin in 2010 and early 2011 leading to the first Steering Committee meeting in March 2011.

Great Basin LCC Steering Committee Formed

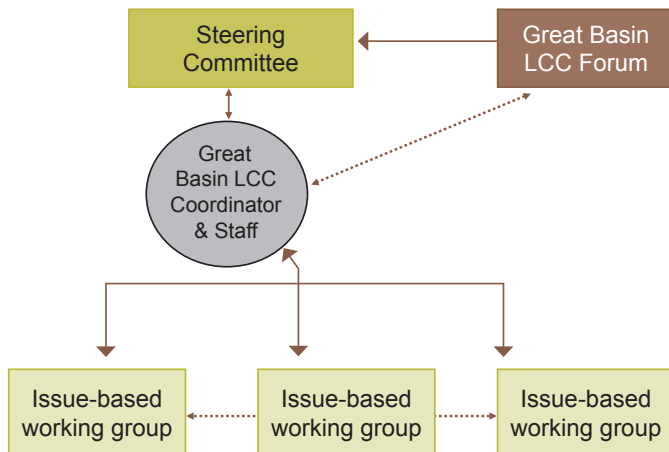
The Great Basin LCC Steering Committee met for the first time on March 22, 2011 in Boise, Idaho. The Steering Committee finalized and adopted the Great Basin LCC charter; identified resources needed for the organization; and identified three initial Issue-based Working Groups. The Steering Committee reviewed and discussed the input from the Great Basin LCC Forum held in February and discussed next steps. The Steering Committee will meet in June via conference call and in-person at a September meeting.

Initial Issue-based Working Groups Identified

The Steering Committee identified three initial working groups for the Great Basin LCC

- **Assessment working group** - Review current efforts and activities in the Great Basin, focusing on one or two issues, to determine data gaps and avoid duplication of efforts
- **Communications working group** - Develop an outreach strategy for the Great Basin LCC to share information about the organization and receive input from partners
- **Cheatgrass die-off working group** - Work with partners already engaged in the issue of cheatgrass die-off and contribute to this effort

Great Basin LCC Organizational Structure



Great Basin LCC Staff

Research Landscape Ecologist

- Dr. Matthew Germino has joined the Great Basin LCC, working at the US Geological Survey Forest and Rangeland Ecosystem Science Center, to research spatial and temporal patterns of change across Great Basin landscapes, and the biological and physical processes that generate these patterns.

Coordinator

- The Bureau of Land Management is in the process of hiring for the Coordinator position. The Great Basin LCC Coordinator will provide ongoing leadership to the Great Basin LCC under the direction of the Steering Committee.

Science Coordinator

- The US Fish and Wildlife Service is in the process of hiring for the Science Coordinator position. The Great Basin LCC Science Coordinator will serve as a senior staff scientist and advisor to the LCC Coordinator and Steering Committee on landscape-level conservation and climate change science.

Great Basin LCC Steering Committee

Allen Biaggi - Nevada Mining Association, freelpeak@gmail.com

Mike Collopy - Great Basin Cooperative Ecosystem Studies Unit, mcollopy@unr.edu

Jim Evans - Partnership for National Trails, executivedirector@nezperctrail.net

Nat Frazer - Great Basin Research and Management Partnership, nat.frazer@usu.edu

John Harja - State of Utah, johnharja@utah.gov

Jeanne Higgins - US Forest Service, jmhiggins@fs.fed.us

Clint Koble - Farm Service Agency USDA, clinton.koble@nv.usda.gov

Ren Lohofener - US Fish and Wildlife Service, Ren_Lohofener@fws.gov

Susan Lynn - Great Basin Water Network, sblynn@sbcglobal.net

Ken Mayer - Nevada Department of Wildlife, kemayer@ndow.org

Raul Morales - Bureau of Land Management, rmorales@blm.gov

Rang Narayanan - Great Basin Environmental Program, rang@cabnr.unr.edu

Bruce Petersen - Natural Resources Conservation Service, bruce.petersen@nv.usda.gov

Brenda Richards - Public Lands Council, brichardsbs@aol.com

Carol Schuler - US Geological Survey, carol_schuler@usgs.gov

Julie Thompson - Eastern Nevada Landscape Coalition, jkt_enlc@sbcglobal.net

Kim Townsend - Duckwater Shoshone Tribe, hmgbrd@peoplepc.com

Bob Unnasch - The Nature Conservancy, bunnasch@tnc.org

Ryan Yates - National Association of Counties, ryates@naco.org

Contacts: E-mail: info@greatbasinlcc.org
 Website: http://www.blm.gov/id/st/en/prog/Great_Basin_LCC.html

Matt Germino
 US Geological Survey
 Phone: 208-426-3353
 E-mail: mgermino@usgs.gov

Mike Pellant
 Bureau of Land Management
 Phone: 208-373-3823
 E-mail: Mike_Pellant@blm.gov

Rick Kearney
 US Fish and Wildlife Service
 Phone: 916-978-6160
 E-mail: Richard_Kearney@fws.gov

Get Involved!

- Send us your feedback
- Sign up to receive email updates
- Review documents on the website