

Fine Structure of HIV and SIV

Hans R. Gelderblom

Robert Koch-Institut, Nordufer 20, D-13353 Berlin, Germany

Aim and Contents of this Note

This note, which is especially directed to scientists working in the fields of molecular genetics and immunology, summarizes essential aspects of morphogenesis and fine structure of HIV and SIV. All retroviruses, including HIV and SIV, show three functional states during their extracellular life cycle: assembly, maturation and aging. These states have been elucidated by transmission electron microscopy (TEM) and closely correlated to viral functions using wild-type virus as well as a variety of functional mutants (for review see Gelderblom 1991²¹; Hunter 1994⁴⁵; Nermut and Hockley 1996⁵⁸). In addition, two early steps in virus-cell interaction, virus adsorption and entry, have been studied by EM. The possibility of clearly distinguishing between three morphologically and functionally distinct states is unique for retroviruses. Because of the close relationship between viral structure and function, EM studies have contributed key information to the understanding of HIV and, ultimately, to the development of antiretroviral strategies.

This note covers three topics. In Section I, techniques applied in the EM analysis of retroviruses are presented together with an overview of comparative retrovirus classification using both morphological and genetic information. In Section II morphogenesis and maturation of HIV/SIV are discussed in detail. Section III outlines the structure and composition of both mature and aging virus particles and thereby also covers the presence and possible role of host cell components with the virion.

I. Electron microscopy and morpho-classification of retroviruses

Electron microscopical techniques: The majority of structural findings on HIV and SIV have been collected by TEM analysis of positive-contrasted thin sections of specimens, usually virus-producing cells (see Figs. 4-6). The specimens are fixed using aldehyde and osmium-tetroxide, dehydrated, and embedded in resins. Sections of 40 to 60 nm in thickness are post-stained using heavy metal salt solutions (for details see *Electron Microscopy* by Bozzola and Russel 1991⁶). The “positive” contrast observed in thin section EM is mainly due to the heavy metals bound to the specimen and their scattering power, i.e., the distribution of heavy elements is shown rather than the details of the object itself (Figs. 1, 5).

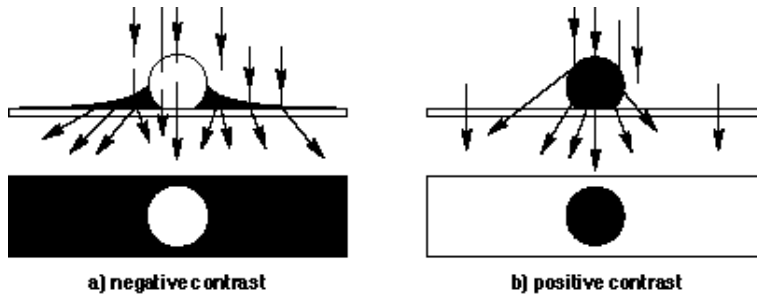


Fig.1. Demonstration of positive and negative contrast phenomena in electron microscopy of biological specimens. Positive contrast is achieved by incubation with electron-dense heavy metal ions and covalent binding of this stain. In negative contrast the same or similar stains are used to wrap the biological structures without interacting chemically with the object.

Thin section EM involves chemical fixation and complete dehydration of the specimen which definitely abolish any “natural” state of biological structures. Nevertheless, thin section EM has been very rewarding in the structural analysis of retroviruses, due to the reproducible differential positive contrast and the appreciable fine structure attained in spite of all the artifacts.

Cryo-EM, in contrast, developed during the last two decades, has already given “molecular” information in many instances (for review see Dubochet et al. 1988¹⁵; MYller 1992⁵⁵). Cryo-EM involves physical fixation, i.e. rapid freezing instead of chemical fixation, and the analysis of frozen-hydrated specimens at temperatures below -140°. The image obtained in cryo-EM depends on the scattering of the biological matter itself, as there is no heavy metal staining involved, and the first results obtained have been rewarding (Nermut et al. 1993⁵⁷). Specimen preparation, operation of the cryo-EM and image processing are, however, technically demanding. The biohazard of working with cryo-fixed, i.e. “living” virus poses additional obstacles. Therefore, in a recent cryo-EM study on the organization of HIV, non-infectious, immature particles generated by recombinant techniques and by “therapeutic” antiviral treatment (Fuller et al. 1997²⁰) were investigated.

In negative staining, biological structures usually remain unstained but are surrounded by an electron-dense stain and therefore appear lighter, i.e., in negative contrast, compared to the dark background. As with positive staining, salts of heavy metals-tungsten, uranium, and molybdenum-are used to create contrast. The stain, applied as a one to two percent solution, surrounds the virus particle pre-adsorbed to the grid and dries out (Figs.1, 5). This rapid technique can result in high resolution information and is used to study selected aspects of retroviruses, (e.g. the presence and shape of SIV glycoprotein knobs) and also in conjunction with immuno-EM (IEM) (Gelderblom et al. 1988²³; Grief et al. 1989³⁴; Hockley et al. 1988⁴⁰; Chrystie and Almeida 1988, ¹⁰1989¹¹). But, because of osmotic damage and other artifacts, negative staining is not recommended as the preferred EM procedure for the elucidation of retrovirus fine structure.

Finally, scanning EM (SEM) has been used to study retroviruses and their interaction with the host cell. Conventional SEM is well suited to the study of virus-infected cell cultures (Gelderblom et al. 1988,²³ Hockley et al. 1988⁴⁰; Nermut et al. 1993⁵⁷). State-of-the-art high resolution SEM can resolve the shape of virus envelope knobs (Renz et al., 1995⁶⁸), however, TEM is mostly preferred in virus fine structural studies, because SEM information is limited to the viral surface.

Table 1 Morphological criteria for the differentiation of retroviruses

Criteria	Mammalian	Avian	Type D	HTLV-BLV
----------	-----------	-------	--------	----------

	type B	type C	type C	group	group
Morphogenesis					
Cores preformed in the cytoplasm	+	-	-	+	-
Core assembly concomitant with budding	-	+	+	-	+
Distance of core shell to prospective envelope	wide	wide	wide	wide	narrow
Morphology of the mature virion					
Shape of the core capsid	isometric	isometric	isometric	cone	isometric
Site of core	eccentric	concentric	concentric	diagonal	concentric
Length of the envelope projections	8-9 nm	5 nm	5 nm	5 nm	5 nm
Anchorage stability of envelope knobs	high	relatively high	relatively high	relatively high	low

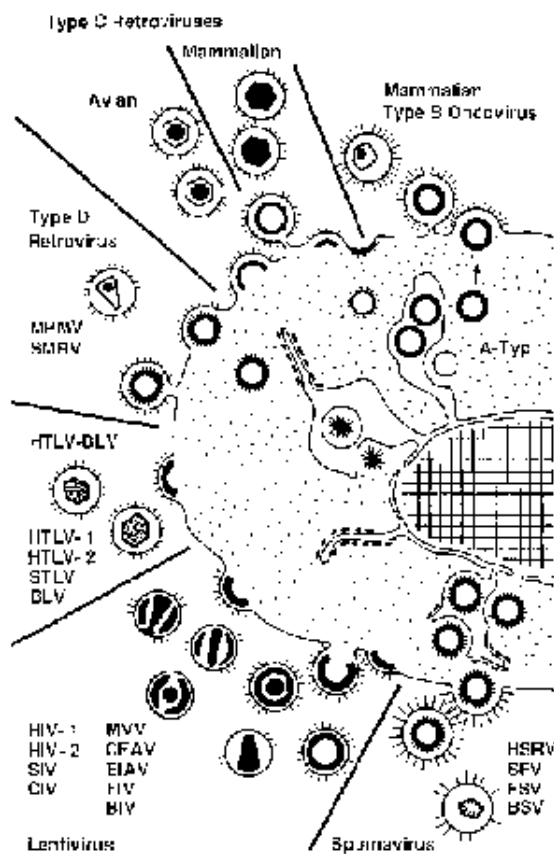


Fig. 2. Using the morphological criteria listed in Table 1, retroviruses form seven clearly distinguishable groups of agents. The members of each particular group share specific biological properties (for detail see Gelderblom et al. 1985a²⁴; Gelderblom 1991²¹).

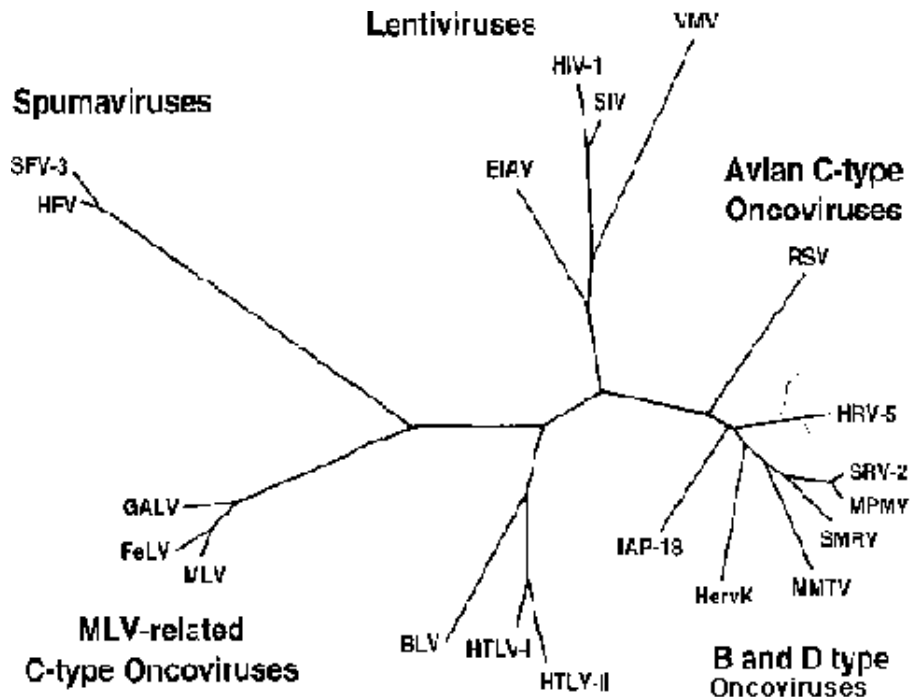


Fig. 3. Phylogenetic tree of 19 “prototypic” members of the retrovirus family (modified from Griffith et al. 1997³⁵). The genetic classification fits remarkably well the morphological grouping shown in Fig. 2. }

Criteria used for the morphological differentiation of retroviruses: Starting with the pioneering work of Wilhelm Bernhard in the late 1950s, TEM has been used to differentiate and classify newly detected retroviruses (Bernhard 1960³). Comparative studies on members of the different retrovirus groups have revealed well-defined structural differences that can be assessed either during budding and in the immature state or with the mature and aging virion. The distinctive criteria listed in Table 1 have often been used to assign “new” retrovirus isolates according to morphology into the proper genus (Fig. 2; for review see Gelderblom 1991²¹).

II. Morphogenesis and maturation of HIV and SIV

The extracellular “life” of a retrovirus consists of several states that can be studied directly by EM (for review see Gelderblom 1991²¹; Nakai and Goto 1996⁵⁶; Nermut and Hockley 1996⁵⁸).

1. The virus is formed at the plasma membrane by an ordered self-assembly of virus structural Gag and Gag-Pol precursor polyproteins (Pr55 gag, Pr155 Gag-Pol) together with genomic RNA.
2. After closure of the spherical ribonucleoprotein shell (RNP) the immature virion is released from the cell.
3. This particle undergoes a functional and morphological maturation as a consequence of proteolytic cleavage of the precursor proteins by the viral protease (PR). The cleavage occurs during assembly or after release of the immature particle.
4. The mature virion ages, rapidly losing infectivity.

Retrovirus-coded proteins are named according to function and localization within the virion by 2-letter acronyms (Leis et al. 1988⁴⁹). This nomenclature is widely applicable in comparative studies on enveloped viruses and is also used in this article (for details see Fig. 7). During maturation, Pr55 Gag is

cleaved by the viral protease (PR) into the four major structural proteins of the mature virion (Henderson et al. 1988³⁸ 1992³⁹): membrane associated or matrix protein (p17 MA), capsid, (p24 CA), nucleocapsid (p10 NC), and the C-terminal core-envelope link (CEL, p6 LI) (Höglund et al. 1992⁴⁴).

The budding process: HIV and SIV, like most retroviruses, self-assemble at plasma membranes (Figs. 4, 5, 6). As a first indication, an electron-dense patch appears directly underneath the lipid bilayer, while on the bud, on the outside of the bilayer, individual virus envelope knobs can be seen. The dense patch grows continuously by side-to-side assembly of the Gag- and Gag-Pol-polyproteins ultimately forming a spherical, electron-dense RNP shell. This immature core is surrounded by a tightly fitting lipid bilayer. High resolution EM of immature virions clearly shows lateral interaction of Gag-rods in the RNP (Hockley et al. 1988⁴⁰; Nermut et al. 1994⁵⁹; Fuller et al. 1997²⁰). The immature virion is densely studded with glycoprotein knobs. Only after complete sealing of the RNP core shell, does the concentrically organized immature virion separate from the plasma membrane and pinch off into the extracellular space (Gelderblom 1991²¹; Göttlinger et al. 1991³²). The immature virion is slightly bigger than the mature particle (120-140 nm versus 110-130 nm; Nermut et al. 1993⁵⁷; Gentile et al. 1994²⁷) and appears to be more rounded than the latter which often shows an angular outline. The angular shapes have led to the conclusion that SIV and HIV represent isometric, probably icosahedral, structures (Marx et al. 1988⁵²; Özel et al. 1988⁶²; Goto et al. 1990³¹; Nermut et al. 1993,⁵⁷ 1994⁵⁹; Nermut and Hockley 1996⁵⁸).

Virus formation and release depend on a number of structural requirements. Very early, intact Pr55 gag was shown using recombinant techniques to contain all the information necessary for viral assembly (Gheysen et al. 1989²⁸; Wills and Craven 1991⁷⁵). The authentic viral RNP core shell of HIV is formed from two proteins, Pr55 Gag and Pr155 Gag-Pol, co-assembled at a ratio of approximately 20 to 1. Virus formation also involves oligomerization of the polyprotein and essentially represents a very constrained process (Jowett et al. 1992⁴⁶; Nermut et al. 1994⁵⁹; Zhang et al. 1996⁷⁸). A few factors shall be mentioned here.

Requirements for a functional MA Two factors, co-translational myristoylation and a highly basic region of the N-terminal MA domain, which binds to phospholipids, are essential for the stable association of MA with the plasma membrane and the formation of infectious HIV (G&246ttlinger et al. 1989³³; Bryant and Ratner 1990⁷; Zhou et al. 1994⁷⁹). Other regions of MA determine the targeting of Pr55 Gag to the plasma membrane, the regular site of viral assembly (FScke et al. 1993¹⁶; Yuan et al. 1993⁷⁷). MA functions are required for both the self-assembly of the Gag- and the Gag-Pol-polyproteins and the insertion of the viral Env protein into the prospective envelope (Yu et al. 1992⁷⁶; Dorfman et al. 1994b¹⁴). Significantly, MA is part of the viral pre-integration complex and acts in targeting this complex to the nucleus in quiescent cells, a process that permits the infection of non-dividing cells (Bukrinsky et al. 1993⁹).

Properties of a functional CA: The side-to-side assembly of the polyprotein rods depends on multiple protein-protein interactions. This process can be inhibited by the intercalation of short peptides derived from the respective domains (Niedrig et al. 1993⁶⁰). The core capsid is made up of p24 CA (Gelderblom et al. 1987a²²; Chrystie and Almeida 1989¹¹). Domains mainly at the C-terminus of p24 CA are essential for proper assembly of the RNP shell (Zhang et al. 1996⁷⁸), while the N-terminal region is required for the formation of the mature, cone-shaped core. The middle region of CA containing the “major homology motif” is well conserved among different retroviruses and essential for the formation of infectious virions (Mammano et al. 1994⁵¹). Finally, Pr55 Gag functions are required for the co-incorporation of Pr155 Gag-Pol into the growing RNP shell (Smith et al. 1993⁷⁰).

The role of p2 Between CA and NC a spacer of 14 amino acids (p2) is situated; another spacer, p1 is located between NC and p6 CEL (Henderson et al. 1992³⁸). P2 is readily detectable in lysates of infected cells, but virtually absent from cell-released virions. The C-terminal portion of CA including part of p2 is crucial for HIV morphogenesis. The spacer is required for the ordered assembly of the spherical RNP shell. The removal of p2 from the C-terminus of p25 CA occurs late during the controlled Pr55 and Pr155 protein cleavage kinetics and is essential for the transition of the spherical RNP shell into the cone-shaped core, i.e., for viral maturation (Göttlinger et al. 1989³³ and personal communication; Pettit et al. 1994⁶⁶; KrSusslich et al. 1995⁴⁷).

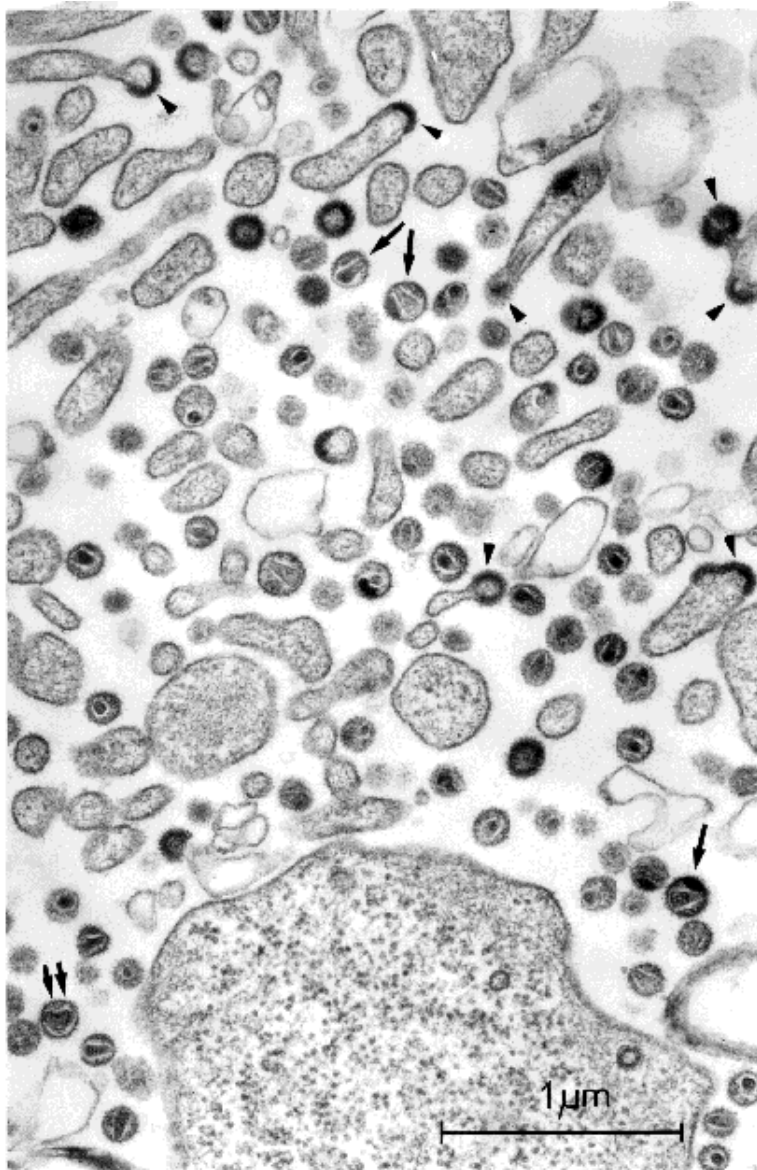


Fig. 4. Thin section EM of HIV-1 strain IIB. Between cellular processes and villi, HIV particles reveal different stages in development. Among many mature virions--characterized by the cone-shaped cores (arrows)--are shown budding viruses (arrow heads), cell released immature virions, and one particle representing an intermediate state in maturation (double arrow).

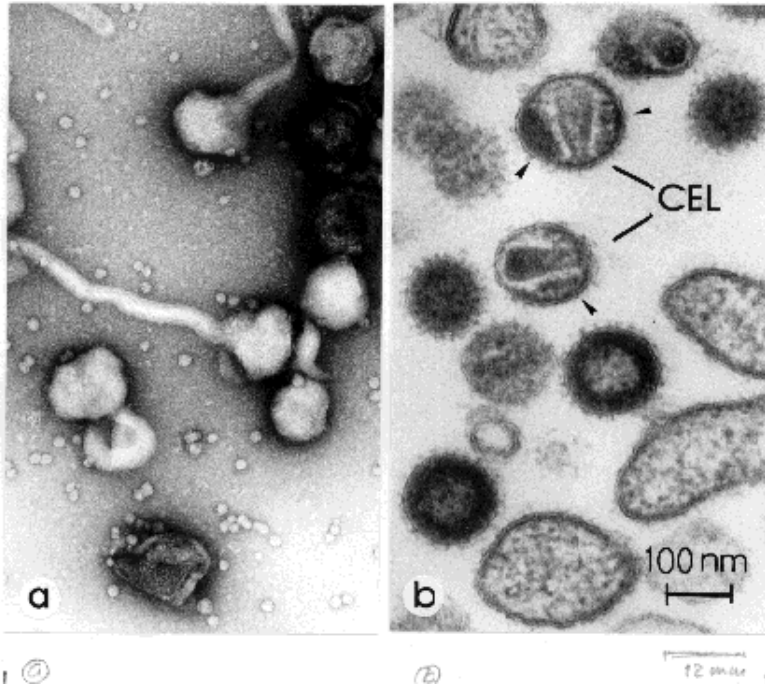


Fig. 5. EM of HIV comparing negative staining (a), and thin section positive staining, (b). (a) The phage-like particles result from the deleterious effects of the negative staining procedure on the labile envelope of isolated HIV. At the bottom a single free cone-shaped core is seen, still partly wrapped by remnants of the viral envelope. (b) Part of Fig. 4 shown at higher magnification. The two mature HIV reveal core-envelope-links (CEL), lateral bodies (arrow heads) and loss of envelope knobs. Two immature virions are still densely covered with surface knobs, during or just after release from the cell.

The role of NC: For effective encapsidation of the viral genome the NC domain interacts during assembly with the viral RNA via two zinc-finger-like motifs (Clavel and Orenstein 1990¹²; Gorelick et al. 1990³⁰; Bess et al. 1992⁴). In addition, a functional NC is required for the effective assembly (Jowett et al. 1992⁴⁶).

The function of p6: The C-terminal portion of the Pr55 polyprotein forms p6 essential for the last step in viral budding (Göttlinger et al. 1991³²). Deletions in p6 prohibit both the closure of the spherical RNP shell and particle release. From fine structural studies, p6 was inferred to also form the core-envelope-link (CEL) (Figs. 5b, 7; Nilsson et al. 1992⁶¹; Höglund et al. 1992⁴⁴).

III. The assembly of the viral envelope

The two viral glycoproteins SU (surface protein, Gp120) and TM (trans-membrane protein, Gp41) are proteolytically processed from the viral Pr160 Env precursor in the Golgi region (Hallenberger et al. 1992³⁶). The incorporation of the glycoprotein knobs depends on the N-terminal part of MA (Yu et al. 1992⁷⁶; Dorfman et al. 1994b¹⁴; Freed and Martin 1996¹⁹). In HIV and a number of other retroviruses (Pepinski and Vogt 1984⁶⁵) evidence exists for a close proximity of the MA and TM (Bugelski et al. 1995⁸; for review see Hunter 1994⁴⁵). The membrane spanning region of TM can be replaced by that of an unrelated TM protein without changing viral functions, and the C-terminus of TM appears to be dispensable (Mammano et al. 1994⁵¹; Wilk et al. 1996⁷⁴). The 72 glycoprotein knobs inserted into the

viral envelope form a regular $T = 7$ laevo pattern (Özel et al. 1988⁶²).

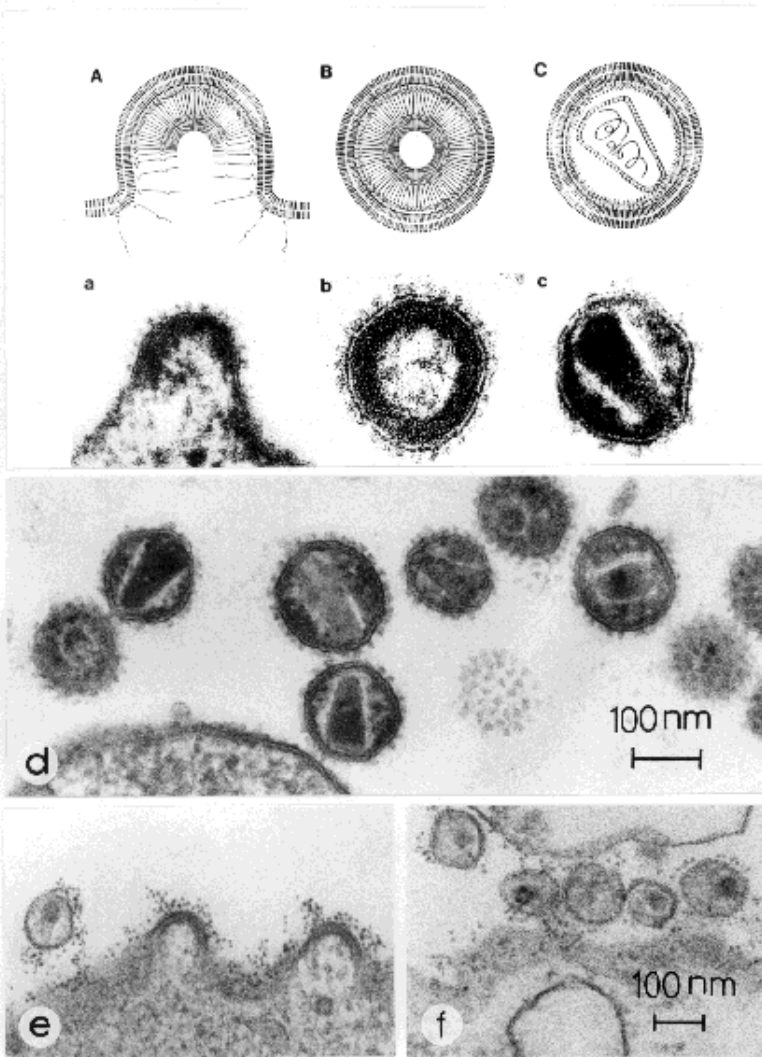


Fig. 6. (a-c) Three different stages in the formation and maturation of HIV illustrating schematically the side-to-side assembly of the Pr55 and Pr155 polyprotein precursor, the immature virion, and the structural rearrangement of the processed proteins in the mature virion. (d) Mature SIV sm particles with cone-shaped cores, lateral bodies and a relatively dense fringe of surface projections. When the glycoprotein knobs are cut tangentially, a trimeric outline of the knobs becomes evident. (e, f) Immunoelectron microscopy localization of HLA class I (beta 2 microglobulin) and of class II (HLA DR), respectively, on budding and mature HIV-1 (from Gelderblom et al. 1987b²⁶).

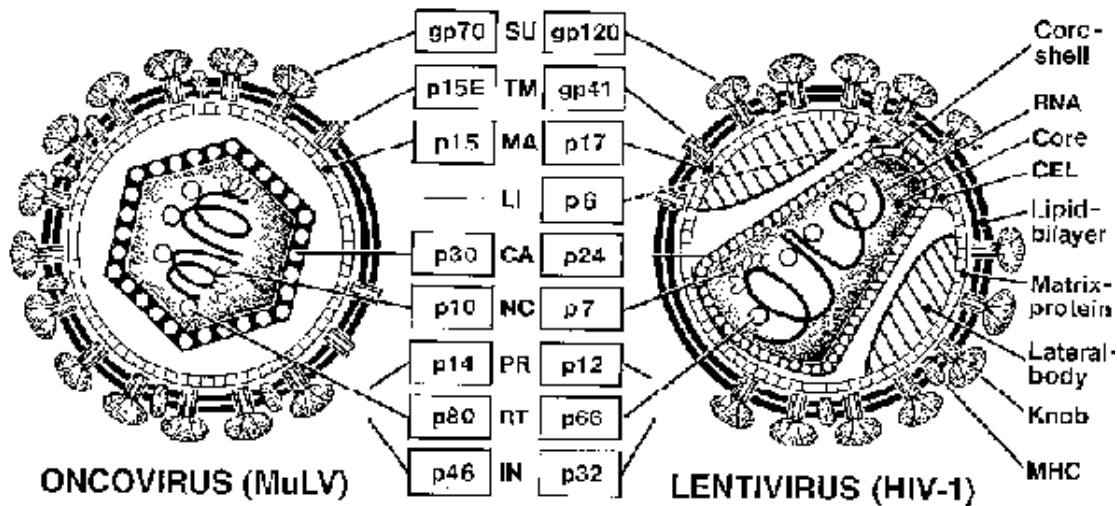


Fig. 7. Diagram of murine type C oncogenic retrovirus and HIV-1 combining morphological observations and IEM findings (Frank et al. 1978¹⁷; Gelderblom 1991²¹). In contrast to other retroviruses, lentiviruses contain an additional C-terminal p6 domain. The definition of the CEL at the small base of the core (Höglund et al. 1992⁴⁴) is based on both morphological evidence (see Fig. 5b) and molecular genetic findings (Göttlinger et al. 1991³²), which suggest an essential role for LI p6 in finishing the budding process. Modified from (Gelderblom et al. 1987a²², Nermut and Hockley 1996⁵⁸.)

The knobs are oligomers of loosely connected TM-SU complexes. The degree of oligomerization, however, is not clear. From cross-linking and molecular-genetic experiments both trimer- and dimer-formation have been reported (Schawaller et al. 1989⁶⁹; Weiss et al. 1990⁷³). From morphologic studies a trimeric shape of the knobs became evident (Gelderblom et al. 1987a²²; Gelderblom et al. 1988²³; Grief et al. 1989³⁴).

IV. Structure and composition of the mature virion

Most probably starting during the assembly of the precursor proteins, Pr55 and Pr155 are cleaved sequentially (Pettit et al. 1994⁶⁶) into the proteins observed in mature HIV/SIV (Henderson et al. 1988,³⁷ 1992³⁸). This processing is required for the rearrangement of the inner proteins which takes place only after release of the immature virion from the cell.

Constituents and organization of the viral core: While MA in the mature virion remains tightly bound to the inner leaflet of the lipid-bilayer, the other Gag-proteins condense to form the cone-shaped core typical of members of the lentivirus family (Figs. 4-7; Gelderblom et al. 1987a²²). In addition, cleavage of Pr155 Gag-Pol liberates multiple copies of the three essential viral enzymes: reverse transcriptase (RT), integrase (IN), and protease (PR). A single virion contains about 1200 molecules of CA and 80 of RT (Layne et al. 1992⁴⁸). In addition, two accessory virus-coded proteins, Vpr and Vpx are present in

amounts equivalent to Gag. Vpr is present in all lentiviruses, while Vpx is restricted to HIV-2 and SIV. The incorporation of Vpr depends on C-terminal domains of p6 (Paxton et al. 1993⁶⁴). Vpr and Vpx have been localized by IEM between the core shell and the viral envelope inside the virion (Liska et al. 1994⁵⁰). High resolution localization of these proteins, however, is still required as well as an IEM analysis to clarify the composition of the electron-dense masses (“lateral bodies”) along the axis of the cone-shaped cores (Figs. 6b, 7). The fine organization of the viral genome inside the core appears complex (Höglund et al. 1992⁴⁴; Takasaki et al. 1997⁷¹).

In addition to virus structural and accessory proteins, a number of host cell constituents e.g., actin, ubiquitin, and cyclophilin A are incorporated into the virion. Interestingly, the latter binds specifically to CA of HIV-1 and was shown to be necessary for the infectivity of HIV-1 strains of the M-group viruses (Franke et al. 1994¹⁸; Thali et al. 1994⁷²).

Constituents of the viral envelope: The lipids of the viral envelope are derived from the plasma membrane of the virus-producing cell during budding (Aloia et al. 1993⁰¹). Besides SU and TM, a number of cellular proteins have been demonstrated to be present on HIV and SIV by immuno EM and other immunological techniques (Gelderblom et al. 1987b²⁶; Henderson et al. 1987³⁹; Hoxie et al. 1987⁴²; Arthur et al. 1992⁰²; Meerloo et al. 1993⁵⁴). For example, HLA class I or HLA DR (class II) proteins are tightly inserted during budding into the viral envelope (Fig. 6) and exceed in number the viral SU and TM. Besides masking the virion as a “wolf in sheep’s clothing” and having an impact on and interaction with the immune system, these host proteins might also exert other biological functions when present on the virion. Effective purification systems for viruses free of host components are lacking (Bess et al. 1997⁴; Gluschankof et al. 1997²⁹).

Virus aging and comparative aspects: Because of weak SU-TM interactions, the viral knobs are shed spontaneously from the viral surface (Gelderblom et al. 1985b²⁵). For HIV-1 strain IIIB a shedding half-life of 30 hours was determined. This rate easily explains the rapid decay of viral infectivity of IIIB (Layne et al. 1992⁴⁸). The SU knobs on HIV-2 and SIV, however, and in particular on fresh HIV isolates, have been reported to be more tightly associated with the viral envelope.

Except for possible differences in anchorage stability of the knobs, no consistent morphological differences are apparent between HIV-1, HIV-2, and SIV (Palmer and Goldsmith 1988⁶³; Gelderblom 1991²¹; Nermut and Hockley 1996⁵⁸). Finally, it should be mentioned that the fine structural data have been collected by EM studies on viruses grown in cell culture. The validity of the structural model still has to be proven by the EM evaluation of infectious plasma HIV.

Acknowledgments

The author thanks Stefan Biel, Thomas Leitner, and Georg Pauli for critical reading of the typescript and Matthias Niedrig for supplying the diagrams A-C of Fig. 6.

References

1. Aloia, R.C., H. Tian and F.C. Jensen. 1993. Lipid composition and fluidity of the HIV envelope and host cell plasma membranes. *Proc. Natl. Acad. Sci. USA* **90**: 5181-5185.
2. Arthur, L.O., J.W. Bess, R.C. Sowder, R. Benveniste, D. Mann, J. Chermann and L. Henderson. 1992. Cellular proteins bound to immunodeficiency viruses: implications for pathogenesis and vaccines. *Science* **258**: 1935-1938.

3. Bernhard, W. 1960. The detection and study of tumor viruses with the electron microscope. *Cancer Res.* **20**: 712-727
4. Bess Jr., J.W., R.J. Gorelick, W.J. Bosche, L.E. Henderson and L.O. Arthur. 1997. Microvesicles are a source of contaminating cellular proteins found in purified HIV-1 preparations. *Virology* **230**: 134-144
5. Bess, J.W., P.J. Powell, H.J. Issaq, L.J. Schumack, M.K. Grimes, L.E. Henderson and L.O. Arthur. 1992. Tightly bound zinc in human immunodeficiency virus type 1, human T-cell leukemia virus type 1, and other retroviruses. *J. Virol.* **66**: 840-847
6. Bozzola, J.J. and L.D. Russell. 1991. *Electron Microscopy. Principles and Techniques for Biologists.* Jones and Bartlett Publishers, Boston
7. Bryant, M. and L. Ratner. 1990. Myristoylation-dependent replication and assembly of human immunodeficiency virus 1. *Proc. Natl. Acad. Sci. USA* **87**: 523-527.
8. Bugelski, P.J., B.E. Maleeff, A.M. Klinkner, J. Ventre and T.K. Hart. 1995. Ultrastructural evidence of an interaction between env and gag proteins during assembly of HIV type 1. *AIDS Res. Human Retroviruses* **11**: 55-64
9. Bukrinsky, M.I., S. Haggerty, M.P. Dempsey, N. Sharova, A. Adzhubei, L. Spitz, P. Lewis, D. Goldfarb, M. Emerman and M. Stevenson. 1993. A nuclear localization signal within HIV-1 matrix protein that governs infection of non-dividing cells. *Nature* **365**: 666-669
10. Chrystie, I.L. and J.D. Almeida. 1988. Further studies of HIV morphology by negative staining. *AIDS* **2**: 459-464
11. Chrystie, I.L. and J.D. Almeida. 1989. Recovery of antigenically reactive HIV-2 cores. *J. Med. Virol.* **27**: 188-195
12. Clavel, F. and J.M. Orenstein. 1990. A mutant of human immunodeficiency virus with reduced RNA packaging and abnormal particle morphology. *J. Virol.* **64**: 5230-5234
13. Dorfman, T., A. Bukovsky, A. Ohagen, S. Höglund and H.G. GÖttlinger. 1994 a. Functional domains of the capsid protein of human immunodeficiency virus type 1. *J. Virol.* **68**: 8180-8187
14. Dorfman, T., F. Mammano, W.A. Haseltine and H.G. GÖttlinger. 1994 b. Role of the matrix protein in the virion association of the human immunodeficiency virus type 1 envelope glycoprotein. *J. Virol.* **68**: 1689-1696
15. Dubochet, J., M. Adrian, J.J. Chang, J.C. Homo, J. Lepault, A.W. McDowell and P. Schultz. 1988. Cryo-electron microscopy of vitrified specimens. *Quarterly Review of Biophysics* **21**: 129-228
16. Fäcke, M., A. Janetzko, R.L. Shoeman and H.G. Kräusslich. 1993. A large deletion in the matrix domain of the human immunodeficiency virus gag gene redirects virus particle assembly from the plasma membrane to the endoplasmic reticulum. *J. Virol.* **67**: 4972-4980

17. Frank, H., H. Schwarz, T. Graf, and W. Schäfer. 1978. Properties of mouse leukemia viruses. XV. Electron microscopic studies on the organization of Friend leukemia and other mammalian C-type viruses. *Z. Naturforsch.* **33c**: 124-138
18. Franke, E.K., H.E. Yuan and J. Luban. 1994. Specific incorporation of cyclophilin A into HIV-1 virions. *Nature* **372**: 359-362
19. Freed, E.O. and M.A. Martin. 1996. Domains of the human immunodeficiency virus type 1 matrix protein and gp41 cytoplasmic tail required for envelope incorporation into virions. *J. Virol.* **70**: 341-351
20. Fuller, S.D., T. Wilk, B.E. Gowen, H.-G. Kräusslich, and V.M. Vogt. 1997. Cryo-electron microscopy reveals ordered domains in the immature HIV-1 particle. *Current Biology* **7**: 729-738
21. Gelderblom, H.R. 1991. Assembly and morphology of HIV: potential effect of structure on viral function. *AIDS* **5**: 617-637
22. Gelderblom, H.R., E.H.S. Hausmann, M. Özel, G. Pauli and M.A. Koch. 1987a. Fine structure of human immunodeficiency virus (HIV) and immunolocalization of structural proteins. *Virology* **156**: 171-176
23. Gelderblom, H.R., M. Özel, E.H.S. Hausmann, T. Winkel, G. Pauli and M.A. Koch. 1988. Fine structure of human immunodeficiency virus (HIV), immunolocalization of structural proteins and virus-cell relation. *Micron Microscopica* **19**: 41-60
24. Gelderblom, H.R., M. Özel and G. Pauli. 1985a. T-Zell-spezifische Retroviren des Menschen: Vergleichende morphologische Klassifizierung und mögliche funktionelle Aspekte. *Bundesgesundheitsblatt* **28**: 161-171
25. Gelderblom, H.R., H. Reupke and G. Pauli. 1985b. Loss of envelope antigens of HTLV-III/LAV, a factor in AIDS pathogenesis? *Lancet* **II**: 1016-1017
26. Gelderblom, H.R., H. Reupke, T. Winkel, R. Kunze and G. Pauli. 1987b. MHC-Antigens: Constituents of the envelopes of human and simian immunodeficiency viruses. *Z. Naturforsch.* **42c**: 1328-1334
27. Gentile, M., T. Adrian, A. Scheidler, M. Ewald, F. Dianzani, G. Pauli and H.R. Gelderblom. 1994. Determination of the size of HIV using adenovirus type 2 as an internal length marker. *J. Virol. Meth.* **48**: 43-52
28. Gheysen, D., E. Jacobs, F. de Foresta, C. Thiriart, M. Francotte and D. Thinnes. 1989. Assembly and release of HIV-1 precursor Pr55gag virus-like particles from recombinant baculovirus-infected insect cells. *Cell* **59**: 103-112
29. Gluschankof, P., Mondor, I, H.R. Gelderblom and Q.J. Sattentau. 1997. Cell membrane vesicles are a major contaminant of gradient-enriched human immunodeficiency virus type-1 preparations. *Virology* **230**: 125-133

- 30.** Gorelick, R.J., S.M. Nigida, J.R. Bess, L.O. Arthur, L.E. Henderson and A. Rein. 1990. Noninfectious human immunodeficiency virus type 1 mutants deficient in genomic RNA. *J. Virol.* **64**: 3207-3211
- 31.** Goto, T., K. Ikuta, J.J. Zhang, C. Morita, K. Sano, M. Komatsu, S. Kato and M. Nakai. 1990. The budding of defective human immunodeficiency virus (HIV-1) particles from cell clones persistently infected with HIV-1. *Arch. Virol.* **111**: 87-101.
- 32.** Göttlinger, H.G., T. Dorfman, J.G. Sodroski and W.A. Haseltine. 1991. Effect of mutations affecting the p6 gag protein on human immunodeficiency virus particle release. *Proc. Natl. Acad. Sci. USA* **88**: 3195-3199
- 33.** Göttlinger, H.G., J.G. Sodroski and W.A. Haseltine. 1989. Role of capsid precursor processing and myristoylation in morphogenesis and infectivity of human immunodeficiency virus type 1. *Proc. Natl. Acad. Sci. USA* **86**: 5781-5785
- 34.** Grief, C., D.J. Hockley, C.E. Fromholz and P.A. Kitchin. 1989. The morphology of simian immunodeficiency virus as shown by negative staining electron microscopy. *J. Gen. Virol.* **70**: 2215-2219
- 35.** Griffiths, D.J., J.W. Venables, R.A. Weiss and M.T. Boyd. 1997. A novel exogenous retrovirus sequence identified in humans. *J. Virol.* **71**: 2866-2872
- 36.** Hallenberger, S., Bosch, V, H. Angliker, E. Shaw, H. Klenk and W. Garten. 1992. Inhibition of furin-mediated cleavage activation of HIV-1 glycoprotein gp160. *Nature* **360**: 358-361
- 37.** Henderson, L.E., R.E. Benveniste, R. Sowder, T.D. Copeland, A.M. Schultz and S. Oroszlan. 1988. Molecular characterization of gag proteins from simian immunodeficiency virus (SIVMne). *J. Virol.* **62**: 2587-2595
- 38.** Henderson, L.E., M.A. Bowers, R.C. Sowder, S.A. Serabyn, D.G. Johnson, J.W. Bess, L.O. Arthur, D.K. Bryant and C. Fenselau. 1992. Gag proteins of the highly replicative MN strain of human immunodeficiency virus type 1: posttranslational modifications, proteolytic processing, and complete amino acid sequences. *J. Virol.* **66**: 1856-1865
- 39.** Henderson, L.E., R. Sowder, T.D. Copeland, S. Oroszlan, L.O. Arthur, W.G. Robey and P.J. Fischinger. 1987. Direct identification of class II histocompatibility DR proteins in preparations of human T-cell lymphotropic virus type III. *J. Virol.* **61**: 629-632
- 40.** Hockley, D.J., R.D. Wood, J.P. Jacobs and A.J. Garrett. 1988. Electron microscopy of human immunodeficiency virus. *J. Gen. Virol.* **69**: 2455-2469
- 41.** Hosaka, Y. and J. Hosoi. 1983. Study of negatively stained images of Sendai virus nucleocapsids using minimum-dose system. *J. Ultrastruct. Res.* **84**: 140-150
- 42.** Hoxie, J.A., T.P. Fitzharris, P.R. Youngbar, D.M. Matthews, J.L. Rackowski and S.F. Radka. 1987. Nonrandom association of cellular antigens with HTLV-III virions. *Hum. Immunol.* **18**: 39-52

43. Höglund, S., A. Ohagen, K. Lawrence and D. Gabuzda. 1994. Role of vif during packing of the core of HIV-1. *Virology* **201**: 349-355
44. Höglund, S., L.G. Öfverstedt, A. Nilsson, P. Lundqvist, H.R. Gelderblom, M. Özel and U. Skoglund. 1992. Spatial visualization of the maturing HIV-1 core and its linkage to the envelope. *AIDS Res. Human Retroviruses* **8**: 1-7
45. Hunter, E. 1994. Macromolecular interactions in the assembly of HIV and other retroviruses. *Sem. Virol.* **5**: 71-83
46. Jowett, J., D. Hockley, M.V. Nermut and I.M. Jones. 1992. Distinct signals in human immunodeficiency virus type 1 Pr55 necessary for RNA binding and particle formation. *J. Gen. Virol.* **73**: 3079-3086
47. Kräusslich, H.G., M. Fäcke, A.M. Heuser, J. Konvalinka and H. Zentgraf. 1995. The spacer peptide between human immunodeficiency virus capsid and nucleocapsid proteins is essential for ordered assembly and viral infectivity. *J. Virol.* **69**: 3407-3419
48. Layne, S.P., M.J. Merges, M. Dembo, J.L. Spouge, S.R. Conley, J.P. Moore, J.L. Raina, H. Renz, H.R. Gelderblom and P.L. Nara. 1992. Factors underlying spontaneous inactivation and susceptibility to neutralization of human immunodeficiency virus. *Virology* **189**: 695-714
49. Leis, J., D. Baltimore, J.M. Bishop, J. Coffin, E. Fleissner and S. Golf. 1988. Standardized and simplified nomenclature for proteins common to all retroviruses. *J. Virol.* **62**: 1808-1809
50. Liska, V, D. Spehner, M. Mehtali, D. Schmitt, A. Kirn and A.M. Aubertin. 1994. Localization of viral protein X in simian immunodeficiency virus macaque strain and analysis of its packaging requirements. *J. Gen. Virol.* **75**: 2955-2962
51. Mammano, F., A. Ohagen, S. Höglund and H.G. GÖttlinger. 1994. Role of the major homology region of human immunodeficiency virus type 1 in virion morphogenesis. *J. Virol.* **68**: 4927-4936
52. Marx, P.A., R.J. Munn, K.I. Joy. 1988. Computer emulation of thin section electron microscopy predicts an envelope-associated icosahedral capsid for human immunodeficiency virus. *Lab. Invest.* **58**: 112-118
53. Massiah, M.A., M.R. Starich, C. Paschal, M.F. Summers, A.M. Christensen and W.I. Sundquist. 1994. Three-dimensional structure of the human immunodeficiency virus type 1 matrix protein. *J. Mol. Biol.* **244**: 198-223
54. Meerloo, T., M.A. Sheikh, A.C. Bloem, A. de Ronde, M. Schutten, C.A. van Els, P.J. Roholl, P. Joling, J. Goudsmit and H.J. Schuurman. 1993. Host cell membrane proteins on human immunodeficiency virus type 1 after in vitro infection of H9 cells and blood mononuclear cells. An immuno-electron microscopy study. *J. Gen. Virol.* **74**: 129-135
55. Müller, M. 1992. The integrating power of cryofixation-based electron microscopy in biology. *Acta Microscopica* **1**: 37-44

- 56.** Nakai, M., T. Goto. 1996. Ultrastructure and morphogenesis of human immunodeficiency virus. *J. Electron Microsc.* **45**: 247-257
- 57.** Nermut, M.V., C. Grief, S. Hashmi and D. Hockley. 1993. Further evidence of icosahedral symmetry in human and simian immunodeficiency virus. *AIDS Res. Hum. Retroviruses* **9**: 929-938
- 58.** Nermut, M.V. and D.J. Hockley. 1996. Comparative morphology and structural classification of retroviruses. *Curr. Top. Microbiol. Immunol.* **214**: 1-24
- 59.** Nermut, M.V., D.J. Hockley, J.B. Jowett, I.M. Jones, M. Garreau and D. Thomas. 1994. Fullerene-like organization of the HIV gag-protein shell in virus-like particles produced by recombinant baculovirus. *Virology* **198**: 288-296
- 60.** Niedrig, M., H. Bickhard, H.R. Gelderblom, G. Pauli, S. Modrow, A. V. Poblitzki, R. Wagner and H. Wolf. 1993. Assembly of HIV gag proteins: a target for antiviral therapy? *Vaccines 93*, Cold Spring Harbor Laboratory Press: 209-214
- 61.** Nilsson, A., P. Lundqvist, A. Love, E. Torfason, H.R. Gelderblom and S. HÖglund. 1992. Spatial visualization of progressive states of maturing lentivirus. *Vet. Microbiol.* **33**: 333-340
- 62.** Özel, M., G. Pauli and H.R. Gelderblom. 1988. The organization of the envelope projections on the surface of HIV. *Arch. Virol.* **100**: 255-266
- 63.** Palmer, E. and C.S. Goldsmith. 1988. Ultrastructure of human retroviruses. *J. Electron. Microsc. Tech.* **8**: 3-5
- 64.** Paxton, W., R.I. Connor and N. Landau. 1993. Incorporation of Vpr into human immunodeficiency virus type 1 virions: requirement for the p6 region of gag and mutational analysis. *J. Virol.* **67**: 7229-7237
- 65.** Pepinsky, R.B. and V.M. Vogt. 1984. Fine structure analysis of lipid-protein and protein-protein interactions of gag protein p19 of the avian sarcoma and leukemia viruses by cyanogen bromide mapping. *J. Virol.* **52**: 145-153
- 66.** Pettit, S.C., M.D. Moody, R.S. Wehbie, A.H. Kaplan, P.V. Nantermet, C.A. Klein and R.A. Swanstrom. 1994. The p2 domain of human immunodeficiency virus type 1 Gag regulates sequential proteolytic processing and is required to produce fully infectious virions. *J. Virol.* **68**: 8017-8027
- 67.** Reicin, A.S., S. Paik, R.D. Berkowitz, J. Luban, Lowy, I. and S.P. Goff. 1995. Linker insertion mutations in the human immunodeficiency virus type 1 gag gene: effects on virion particle assembly, release, and infectivity. *J. Virol.* **65**: 4350-4358
- 68.** Renz, H., G. Weinberg, M. Özel, H.R. Gelderblom, G. Pauli, and M. Müller. 1993. High resolution scanning electron microscopy of HIV after conventional- and cryo-preparation. Comparison with transmission electron microscopical results. *Beitr. Elektronenmikroskop. Direktabb. Oberfl.* **26**: 209-219
- 69.** Schawaller, M., G.E. Smith, J.J. Skehel and D.C. Wiley. 1989. Studies with crosslinking reagents on

the oligomeric structure of the env glycoprotein of HIV. *Virology* **172**: 367-369

- 70.** Smith, A.J., N. Srinivasakumar, M.L. Hammarskjold and D. Rekosh. 1993. Requirements for incorporation of Pr160 gag-pol from human immunodeficiency virus type 1 into virus-like particles. *J. Virol.* **67**: 2266-2275
- 71.** Takasaki, T., Kurane, I, H. Aihara, N. Ohkawa and J. Yamaguchi. 1997. Electron microscopy study of human immunodeficiency virus type 1 (HIV-1) core structure: two RNA strands in the core of mature and budding particles. *Arch. Virol.* **142**: 375-382
- 72.** Thali, M., A. Bukovsky, E. Kondo, B. Rosenwirth, C. Walsh, J. Sodroski and H.G. GÖttlinger. 1994. Functional association of cyclophilin A with HIV-1 virions. *Nature* **372**: 363-365
- 73.** Weiss, C.D., J.A. Levy and J.M. White. 1990. Oligomeric organization of gp120 on infectious human immunodeficiency virus type 1 particles. *J. Virol.* **64**: 5674-5677
- 74.** Wilk, T., T. Pfeiffer, A. Bukovsky, G. Moldenhauer and V. Bosch. 1996. Glycoprotein incorporation and HIV-1 infectivity despite exchange of the gp 160 membrane-spanning domain. *Virology* **218**: 269-274
- 75.** Wills, J.W. and R.C. Craven. 1991. Form, function and use of retroviral Gag proteins. *AIDS* **5**: 639-654
- 76.** Yu, X., X. Zuan, Z. Matsuda, T.H. Lee and M. Essex. 1992. The matrix protein of human immunodeficiency virus type 1 is required for incorporation of viral envelope protein into mature virions. *J. Virol.* **66**: 4966-4971
- 77.** Yuan, X, X. Yu, T.H. Lee and M. Essex. 1993. Mutations in the N-terminal region of human immunodeficiency virus type 1 matrix protein block intracellular transport of the Gag precursor. *J. Virol.* **67**: 6387-6394
- 78.** Zhang, W.H., D. Hockley, M.V. Nermut, Y. Morikawa and I.A. Jones. 1996. Gag-Gag interactions in the C-terminal domain of human immunodeficiency virus type 1 p24 capsid antigen are essential for Gag particle assembly. *J. Gen. Virol.* **77**: 743-751
- 79.** Zhou, K., L.J. Parent, J.W. Wills and M.D. Resh. 1994. Identification of a membrane binding domain within the amino-terminal region of human immunodeficiency virus type 1 Gag protein which interacts with acidic phospholipids. *J. Virol.* **68**: 2556-2569.