

Summary Statistics

Table 1. Crude oil prices
dollars per barrel

Year month	Domestic first purchase prices	Average F.O.B. [a] cost of crude oil imports[b]	Average landed cost of crude oil imports[b]	Refiner acquisition cost of crude oil		
				Domestic	Imported	Composite
1996 average	18.46	19.32	20.31	20.77	20.64	20.71
1997 average	17.23	16.94	18.11	19.61	18.53	19.04
1998 average	10.87	10.76	11.84	13.18	12.04	12.52
1999 average	15.56	16.47	17.23	17.90	17.26	17.51
2000 average	26.72	26.27	27.53	29.11	27.70	28.26
2001 average	21.84	20.46	21.82	24.33	22.00	22.95
2002 average	22.51	22.63	23.91	24.65	23.71	24.10
2003 average	27.56	25.86	27.69	29.82	27.71	28.53
2004 average	36.77	33.75	36.07	38.97	35.90	36.98
2005 average	50.28	47.60	49.29	52.94	48.86	50.24
2006 average	59.69	57.03	59.11	62.62	59.02	60.24
2007 average	66.52	66.36	67.97	69.65	67.04	67.94
2008 average	94.04	90.32	93.33	98.47	92.77	94.74
2009 average	56.35	57.78	60.23	59.49	59.17	59.29
2010 average	74.71	74.19	76.50	78.01	75.86	76.69
2011 average	95.73	101.66	102.92	100.71	102.63	101.87
2012 average	94.52	99.78	101.00	100.72	101.09	100.93
2013 average	95.99	96.56	96.99	102.91	98.11	100.49
2014						
January	89.57	90.93	90.97	97.21	89.71	93.58
February	96.86	92.76	95.38	102.35	96.10	99.36
March	96.17	93.05	95.54	102.61	97.13	100.09
April	96.49	94.15	96.51	102.53	97.33	100.15
May	95.74	96.16	97.99	102.40	98.46	100.61
June	98.68	97.57	99.27	104.21	100.26	102.51
July	96.70	93.79	96.59	103.21	98.75	101.22
August	90.72	89.28	91.53	97.60	93.23	95.61
September	86.87	85.26	87.31	94.62	89.38	92.26
October	78.84	76.73	80.13	86.73	82.75	84.99
November	71.07	67.48	70.94	76.67	74.34	75.66
December	54.86	50.01	54.86	63.26	57.36	60.70
2014 average	87.39	85.65	88.16	94.05	89.56	92.02
2015						
January	43.06	40.16	44.42	48.90	44.74	47.00
February	44.35	43.94	47.32	50.23	47.18	48.92
March	42.66	43.64	47.25	48.60	47.22	47.99
April	49.30	48.42	52.00	54.86	51.62	53.51
May	54.38	54.05	57.17	59.48	57.51	58.65
June	55.88	53.83	56.73	61.06	58.89	60.12
July	47.70	45.88	49.79	54.15	52.42	53.40
August	39.98	37.17	41.39	46.30	43.23	44.97
September	41.60	36.90	40.02	46.68	41.12	44.38
October	42.34	37.21	40.38	47.02	42.03	44.77
November	38.19	33.56	37.13	43.30	39.05	41.43
December	32.26	28.23	31.56	37.76	33.16	35.63
2015 average	44.39	41.91	45.38	49.94	46.38	48.39
2016						
January	27.02	23.56	27.34	32.17	27.48	29.99
February	25.51	24.68	26.97	30.30	26.61	28.53
March	31.87	29.73	31.99	35.31	32.21	33.82
April	35.59	32.76	35.42	39.30	35.90	37.71
May	41.02	38.32	40.73	44.77	40.88	42.88
June	43.96	41.92	43.55	47.57	44.13	45.96
July	40.70	38.76	41.03	44.88	41.48	43.26
August	40.46	R38.27	R40.40	44.18	41.21	42.70
September	40.54	R38.29	R40.52	R44.47	R40.86	R42.73
October	45.00	42.58	43.86	R48.63	R44.76	R46.82
November [c]	NA	NA	NA	E46.76	E41.80	E44.63

NA = Not available.

E = Estimated data.

R = Revised data.

[a] Free on Board. See Glossary.

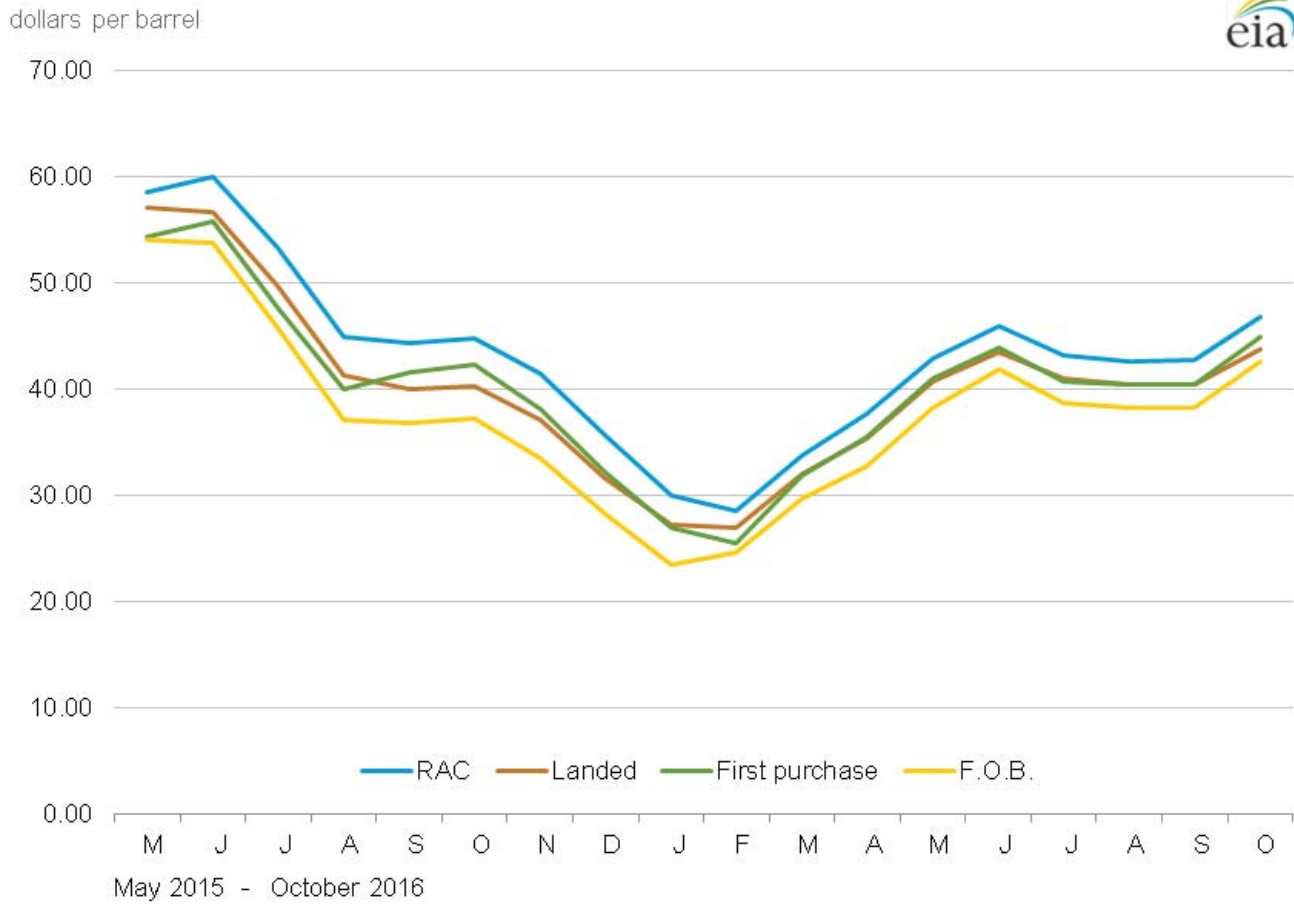
[b] Values reflect the month of acquisition, which can be the month of loading, the month of landing, or sometime between those events. Prices for crude oil can be determined at a time other than the acquisition date. See the Explanatory Notes section.

[c] Data are initial estimates calculated using regression models based on past and present values, spot prices and other internally computed data. For an explanation of estimation methodology, see the Preface.

Notes: - In January 2004, new crude streams were added and selected crude streams were discontinued for California, Gulf Coast, Oklahoma, and Texas. - Values for Domestic First Purchase Price and Refiner Acquisition Cost for the current 2 months, and for Average F.O.B. and Average Landed Costs, for the current 3 months are preliminary. Values shown for previous months may be revised. Data through 2015 are final.

Sources: Domestic first purchase prices -- See "Source" from Table 18. Crude oil imports costs -- See "Sources" from Table 21. Refiner acquisition costs -- U.S. Energy Information Administration, Form EIA-14, "Refiners' Monthly Cost Report."

Figure 1. Crude oil prices



Sources: U.S. Energy Information Administration, Form EIA-182, "Domestic Crude Oil First Purchase Report"; Form EIA-856, "Monthly Foreign Crude Oil Acquisition Report"; and Form EIA-14, "Refiners' Monthly Cost Report."
 Note: RAC stands for refiner acquisition cost.

Table 1A. Refiner acquisition cost of crude oil by PAD Districts
dollars per barrel

Year month	U.S.			PAD District 1			PAD District 2		
	Domestic	Imported	Composite	Domestic	Imported	Composite	Domestic	Imported	Composite
2004	38.97	35.90	36.98	40.75	38.29	38.34	40.80	35.63	38.38
2005	52.94	48.86	50.24	56.89	53.29	53.35	54.57	46.11	50.75
2006	62.62	59.02	60.24	66.92	63.53	63.60	63.66	55.19	59.70
2007	69.65	67.04	67.94	70.62	72.48	72.44	71.10	62.17	66.90
2008	98.47	92.77	94.74	100.30	96.90	96.97	100.98	88.45	94.93
2009	59.49	59.17	59.29	59.64	61.68	61.63	60.00	57.00	58.64
2010	78.01	75.86	76.69	75.90	80.03	79.91	78.85	72.24	75.92
2011	100.71	102.63	101.87	98.88	111.53	111.01	96.81	89.15	93.18
2012	100.72	101.09	100.93	104.45	112.27	111.50	95.04	83.90	89.44
2013	102.91	98.11	100.49	106.98	106.74	106.80	100.63	85.43	93.26
2014									
January	97.21	89.71	93.58	100.42	102.14	101.37	94.25	75.58	85.08
February	102.35	96.10	99.36	103.88	103.59	103.70	100.25	86.43	93.41
March	102.61	97.13	100.09	105.77	104.36	104.97	101.08	89.49	95.30
April	102.53	97.33	100.15	105.99	105.62	105.78	100.89	88.05	94.49
May	102.40	98.46	100.61	107.90	105.64	106.55	101.81	90.09	96.17
June	104.21	100.26	102.51	110.16	106.10	107.74	103.68	93.44	98.83
July	103.21	98.75	101.22	108.38	103.98	105.88	102.42	91.08	96.89
August	97.60	93.23	95.61	101.00	99.21	100.00	95.90	83.12	89.64
September	94.62	89.38	92.26	97.36	93.81	95.36	92.63	81.62	87.44
October	86.73	82.75	84.99	89.89	86.65	88.23	84.53	77.78	81.15
November	76.67	74.34	75.66	80.36	78.20	79.16	77.52	71.24	74.55
December	63.26	57.36	60.70	64.70	64.38	64.54	61.41	52.59	57.03
2014	94.05	89.56	92.02	96.95	96.51	96.70	93.08	81.66	87.51
2015									
January	48.90	44.74	47.00	52.45	50.72	51.64	48.86	41.14	44.51
February	50.23	47.18	48.92	53.37	51.94	52.67	49.56	42.32	45.88
March	48.60	47.22	47.99	51.93	51.95	51.94	47.30	41.44	44.47
April	54.86	51.62	53.51	58.93	55.18	57.13	52.79	46.13	49.74
May	59.48	57.51	58.65	62.95	59.39	61.11	58.11	52.92	55.68
June	61.06	58.89	60.12	63.62	60.58	61.83	59.76	56.42	58.24
July	54.15	52.42	53.40	54.90	57.54	56.49	52.90	50.43	51.73
August	46.30	43.23	44.97	46.69	49.04	48.17	44.94	39.14	42.15
September	46.68	41.12	44.38	47.77	45.58	46.66	46.43	35.66	41.47
October	47.02	42.03	44.77	49.84	44.26	46.53	47.11	38.97	43.48
November	43.30	39.05	41.43	45.46	44.13	44.64	43.78	36.25	40.16
December	37.76	33.16	35.63	39.41	39.07	39.19	37.92	30.62	34.29
2015	49.94	46.38	48.39	52.60	50.40	51.37	49.33	42.70	46.13
2016									
January	32.17	27.48	29.99	33.12	31.44	32.02	32.47	25.60	28.85
February	30.30	26.61	28.53	32.90	30.86	31.36	30.65	24.00	27.01
March	35.31	32.21	33.82	39.12	36.17	36.91	36.37	29.60	32.80
April	39.30	35.90	37.71	43.85	39.19	40.32	40.29	34.08	37.04
May	44.77	40.88	42.88	49.14	43.95	45.24	46.03	38.48	42.47
June	47.57	44.13	45.96	50.67	47.17	48.12	49.34	41.86	45.81
July	44.88	41.48	43.26	48.37	45.03	45.61	45.70	39.13	42.60
August	44.18	41.21	42.70	48.18	45.15	45.63	45.57	38.43	42.10
September	R44.47	R40.86	R42.73	R47.25	R44.33	R44.98	R45.61	R37.69	R41.79
October	R48.63	R44.76	R46.82	51.04	48.09	48.57	50.17	43.02	46.74

See footnotes at end of table.

Table 1A. Refiner acquisition cost of crude oil by PAD Districts (cont.)

dollars per barrel

Year month	PAD District 3			PAD District 4			PAD District 5		
	Domestic	Imported	Composite	Domestic	Imported	Composite	Domestic	Imported	Composite
2004	39.28	34.79	35.87	39.98	35.93	37.81	36.81	38.20	37.30
2005	53.17	47.77	48.99	53.50	48.54	50.89	50.61	50.77	50.67
2006	63.17	58.34	59.54	60.80	56.17	58.45	60.90	61.44	61.15
2007	70.58	66.34	67.48	65.79	60.81	63.43	67.47	69.42	68.34
2008	100.39	91.86	94.11	91.49	88.56	90.12	94.53	96.30	95.35
2009	60.61	59.21	59.64	56.30	56.53	56.39	57.79	60.07	58.78
2010	78.73	75.67	76.65	73.56	70.77	72.37	76.56	78.23	77.34
2011	103.24	104.78	104.24	89.34	84.87	87.61	103.83	105.68	104.73
2012	104.32	105.18	104.83	86.83	80.80	84.63	103.03	106.43	104.69
2013	104.64	101.42	103.02	88.96	80.75	85.21	103.82	105.12	104.40
2014									
January	98.26	93.60	96.04	84.71	70.60	77.56	99.66	97.31	98.56
February	103.83	98.18	101.27	93.44	85.64	89.56	101.78	102.10	101.92
March	102.94	97.51	100.64	92.10	85.43	88.81	104.64	105.09	104.85
April	103.17	98.54	101.14	92.35	86.57	89.88	103.66	105.41	104.39
May	101.83	100.02	101.04	93.61	88.77	91.38	105.20	104.47	104.90
June	104.46	101.44	103.27	97.35	92.05	95.47	104.01	105.62	104.70
July	103.31	100.39	102.12	93.51	88.16	91.08	104.45	104.84	104.63
August	98.43	95.66	97.30	86.93	81.17	84.23	98.57	99.88	99.25
September	95.99	90.90	93.90	84.40	79.99	82.32	94.21	95.76	94.97
October	88.64	82.95	86.43	77.06	74.99	76.13	83.74	88.93	86.17
November	76.34	74.03	75.40	71.32	68.05	69.87	76.79	79.13	77.77
December	65.71	57.54	62.45	52.13	49.62	50.98	59.00	63.01	60.72
2014	94.67	90.84	93.06	84.63	78.73	81.93	94.45	96.13	95.22
2015									
January	49.11	45.46	47.62	41.14	36.20	38.77	48.61	49.03	48.80
February	50.01	48.09	49.24	45.05	39.66	42.52	51.99	52.78	52.31
March	49.02	48.33	48.74	42.43	38.15	40.32	49.09	52.78	50.77
April	55.40	52.56	54.30	47.72	44.57	46.25	55.81	57.47	56.53
May	59.46	58.41	59.07	54.42	50.62	52.61	61.54	62.65	62.07
June	61.68	58.84	60.58	54.68	55.25	54.94	61.35	62.34	61.83
July	54.86	51.58	53.67	48.76	48.19	48.48	54.37	55.50	54.95
August	47.15	42.87	45.65	40.16	35.58	37.87	46.08	47.52	46.85
September	46.71	41.31	44.82	42.08	32.48	37.12	47.67	47.09	47.37
October	46.86	41.33	44.65	43.98	37.26	40.39	47.30	46.74	47.01
November	43.14	38.25	41.31	40.49	34.01	37.16	43.28	43.29	43.28
December	37.94	32.18	35.54	34.68	28.70	31.54	37.06	37.35	37.20
2015	50.16	46.49	48.75	44.77	39.73	42.28	50.30	50.91	50.59
2016									
January	32.48	26.96	30.31	29.77	23.46	26.50	30.82	30.56	30.69
February	30.23	26.16	28.53	28.49	20.75	24.75	30.09	30.80	30.43
March	34.37	31.61	33.17	36.04	27.85	32.35	36.59	36.03	36.32
April	38.65	34.49	37.05	39.41	33.72	36.59	39.69	39.66	39.67
May	43.96	39.63	42.13	44.71	36.54	40.77	45.13	45.37	45.27
June	47.03	43.73	45.68	47.33	39.53	43.74	46.45	47.18	46.85
July	44.82	40.91	43.23	44.15	37.09	40.78	43.45	44.35	43.95
August	44.23	40.99	42.78	38.63	37.08	37.94	43.13	43.37	43.26
September	R43.99	R40.53	R42.50	43.71	36.49	40.22	R44.44	R44.95	R44.72
October	48.01	44.02	46.46	49.12	40.74	44.64	48.28	47.61	47.94

R = Revised data.

Notes: - U.S. is defined as the 50 states, the District of Columbia, Puerto Rico, the Virgin Islands, and all American territories and possessions. Values reflect the PAD District in which the crude oil is intended to be refined. - Values shown for the current month are preliminary. Values shown for the previous month may be revised. Data through 2015 are final.

Sources: U.S. Energy Information Administration Form EIA-14, "Refiners' Monthly Cost Report," January 2004 to present."

Table 2. U.S. refiner prices of petroleum products to end users

dollars per gallon excluding taxes

Year month	Motor gasoline	Aviation gasoline	Kerosene type jet fuel	Propane (consumer grade)	Kerosene	No. 2 distillate					Residual fuel oil
						No. 1 distillate	No. 2 diesel fuel	No. 2 fuel oil	Average	No. 4 fuel[a]	
1985	0.912	1.201	0.796	0.717	1.030	0.880	0.789	0.849	0.799	0.773	0.610
1986	0.624	1.011	0.529	0.745	0.790	0.620	0.478	0.560	0.491	0.489	0.343
1987	0.669	0.907	0.543	0.701	0.770	0.604	0.551	0.581	0.556	0.513	0.423
1988	0.673	0.891	0.513	0.714	0.738	0.564	0.500	0.544	0.507	0.461	0.334
1989	0.756	0.995	0.592	0.615	0.709	0.661	0.585	0.587	0.585	0.512	0.385
1990	0.883	1.120	0.766	0.745	0.923	0.819	0.725	0.734	0.726	0.622	0.444
1991	0.797	1.047	0.652	0.730	0.838	0.740	0.648	0.665	0.650	0.580	0.340
1992	0.787	1.027	0.610	0.643	0.788	0.666	0.619	0.627	0.620	0.526	0.336
1993	0.759	0.990	0.580	0.673	0.754	0.666	0.602	0.602	0.602	0.501	0.337
1994	0.738	0.957	0.534	0.530	0.660	0.640	0.554	0.572	0.556	0.501	0.352
1995	0.765	1.005	0.540	0.492	0.589	0.620	0.560	0.562	0.560	0.505	0.392
1996	0.847	1.116	0.651	0.605	0.740	0.726	0.681	0.673	0.680	0.603	0.455
1997	0.839	1.128	0.613	0.552	0.745	0.689	0.642	0.636	0.642	0.565	0.423
1998	0.673	0.975	0.452	0.405	0.501	0.551	0.494	0.482	0.492	0.428	0.305
1999	0.781	1.059	0.543	0.458	0.605	0.621	0.584	0.558	0.580	0.474	0.374
2000	1.106	1.306	0.899	0.603	1.123	0.988	0.935	0.927	0.934	0.769	0.602
2001	1.032	1.323	0.775	0.506	1.045	0.902	0.842	0.829	0.840	0.679	0.531
2002	0.947	1.288	0.721	0.419	0.990	0.828	0.762	0.737	0.759	0.657	0.569
2003	1.156	1.493	0.872	0.577	1.224	1.017	0.944	0.933	0.942	0.856	0.698
2004	1.435	1.819	1.207	0.839	1.160	1.262	1.243	1.173	1.235	1.017	0.739
2005	1.829	2.231	1.735	1.089	1.957	1.832	1.786	1.705	1.777	W	1.048
2006	2.128	2.682	1.998	1.358	2.244	2.137	2.096	1.982	2.091	W	1.218
2007	2.345	2.849	2.165	1.489	2.263	2.286	2.267	2.241	2.266	W	1.374
2008	2.775	3.273	3.052	1.892	3.283	2.983	3.150	2.986	3.143	W	1.964
2009	1.888	2.442	1.704	1.220	2.675	2.141	1.834	1.962	1.840	W	1.341
2010	2.301	3.028	2.201	1.481	3.063	2.705	2.314	2.462	2.318	W	1.713
2011	3.050	3.803	3.054	1.709	3.616	3.467	3.117	3.193	3.119	W	2.401
2012	3.154	3.971	3.104	1.139	3.843	3.580	3.202	3.358	3.206	W	2.592
2013	3.049	3.932	2.979	1.028	3.842	3.483	3.122	3.335	3.126	W	2.482
2014	2.855	3.986	2.772	1.097	W	3.117	2.923	3.329	2.924	W	2.325
2015											
January	1.673	W	1.633	0.566	W	1.925	1.819	NA	1.823	-	1.264
February	1.858	W	1.747	0.671	W	2.027	1.979	2.204	1.981	-	1.376
March	2.054	W	1.766	0.619	W	NA	1.962	2.141	1.963	-	1.465
April	2.058	W	1.739	0.575	W	W	1.939	NA	1.941	W	1.516
May	2.322	W	1.979	0.465	W	W	2.090	2.308	2.092	W	1.543
June	2.374	W	1.855	0.393	W	W	2.021	2.321	2.022	W	1.549
July	2.338	W	1.694	0.405	W	W	1.913	2.207	1.914	W	1.363
August	2.218	W	1.516	0.387	W	W	1.737	2.046	1.739	W	1.207
September	1.920	W	1.465	0.468	2.996	W	1.693	1.949	1.694	W	1.107
October	1.849	W	1.473	0.479	W	1.774	1.702	NA	1.703	-	1.094
November	1.711	W	1.424	0.447	W	NA	1.603	1.814	1.606	-	1.043
December	1.604	W	1.232	0.422	W	NA	1.365	1.695	1.368	-	0.919
2015	2.003	W	1.629	0.481	W	1.822	1.819	2.016	1.821	W	1.285
2016											
January	1.505	W	1.038	0.377	W	NA	1.198	1.450	1.201	W	0.710
February	1.332	W	1.032	0.409	W	NA	1.185	1.407	1.187	-	0.632
March	1.552	W	1.133	0.481	W	1.610	1.317	1.555	1.318	-	0.693
April	1.725	W	1.187	0.472	W	1.706	1.386	1.631	1.388	W	0.782
May	1.869	W	1.342	0.533	W	W	1.555	1.733	1.555	-	0.922
June	1.961	W	1.464	0.514	W	2.041	1.661	1.861	1.662	W	0.983
July	1.804	W	1.393	0.491	W	1.911	1.577	1.814	1.578	W	1.030
August	1.754	W	1.330	0.460	W	1.890	1.577	NA	1.578	W	0.990
September	1.788	W	R1.394	0.507	W	1.977	R1.601	1.805	R1.602	W	R1.076
October	1.819	W	1.506	0.599	W	2.045	1.706	1.941	1.708	W	1.115

NA = Not available.

- = No data reported.

W = Withheld to avoid disclosure of individual company data.

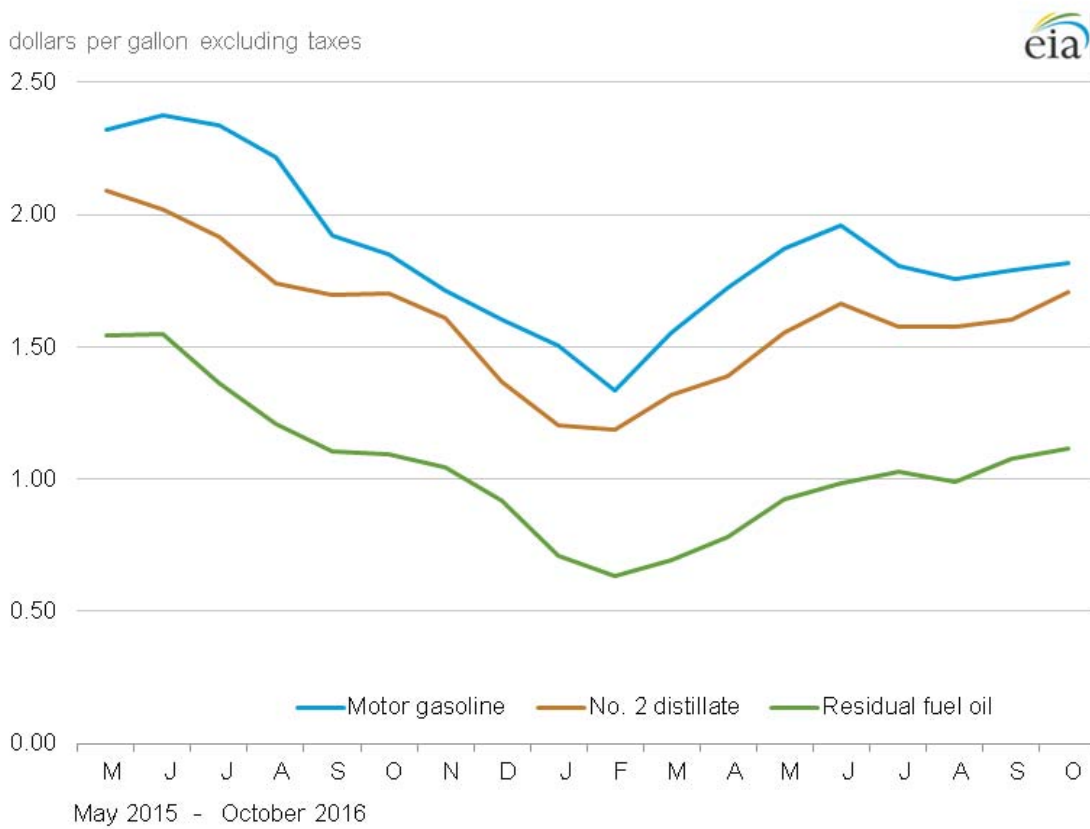
R = Revised data.

[a] Includes No. 4 fuel oil and No. 4 diesel fuel.

Notes: - Motor gasoline averages and totals prior to October 1993 include leaded gasoline. - Values shown for the current month are preliminary. Values shown for previous months may be revised. Data through 2015 are final.

Sources: U.S. Energy Information Administration Form EIA-782A, "Refiners'/Gas Plant Operators' Monthly Petroleum Product Sales Report."

Figure 2. U.S. Refiner retail petroleum product prices



Sources: U.S. Energy Information Administration, Form EIA-782A, "Refiners'/Gas Plant Operators' Monthly Petroleum Sales Report."

Table 3. U.S. refiner volumes of petroleum products to end users
million gallons per day

Year month	Motor gasoline	Aviation gasoline	Kerosene type jet fuel	Propane (consumer grade)	Kerosene	No. 1 distillate	No. 2 distillate			Residual fuel oil	
							No. 2 diesel fuel	No. 2 fuel oil	Average		
1985	57.5	0.3	34.6	3.7	0.3	0.5	25.0	5.0	29.9	0.5	25.2
1986	61.2	0.3	35.1	3.4	0.3	0.4	24.4	4.4	28.8	0.7	31.6
1987	61.0	0.2	36.8	3.8	0.3	0.4	24.1	4.5	28.5	0.8	29.0
1988	61.0	0.2	38.2	4.3	0.3	0.4	24.5	4.6	29.1	1.1	30.2
1989	61.2	0.2	40.1	2.8	0.3	0.5	24.3	4.5	28.8	0.9	30.4
1990	60.3	0.2	39.9	2.7	0.2	0.5	22.2	3.6	25.9	0.8	25.9
1991	61.2	0.2	38.5	3.1	0.2	0.5	21.1	3.2	24.4	0.7	24.0
1992	59.0	0.2	39.8	3.8	0.2	0.5	21.5	3.1	24.6	0.6	22.4
1993	57.2	0.2	41.7	3.5	0.2	0.4	20.8	2.9	23.8	0.6	17.2
1994	55.0	0.2	45.2	2.2	0.4	0.4	21.3	3.4	24.6	0.8	13.5
1995	55.9	0.2	45.7	3.2	0.6	0.3	21.6	3.3	24.9	0.5	11.6
1996	57.5	0.2	48.7	3.1	0.4	0.3	21.9	3.1	25.0	0.4	12.9
1997	61.1	0.2	49.7	3.2	0.3	0.4	22.0	3.0	25.0	0.3	13.4
1998	63.3	0.2	48.9	3.1	0.4	0.4	21.1	3.2	24.3	0.3	14.4
1999	62.0	0.1	47.0	3.6	0.2	0.3	21.1	3.0	24.1	0.3	13.9
2000	60.9	0.2	49.3	2.9	0.2	0.3	22.6	2.8	25.4	0.3	13.1
2001	62.0	0.1	49.7	3.6	0.2	0.3	22.9	3.0	26.0	0.4	14.8
2002	63.6	0.1	49.1	2.6	0.1	0.3	19.6	3.0	22.6	0.4	10.4
2003	63.8	0.1	44.0	2.5	0.1	0.3	16.7	2.7	19.5	0.3	10.7
2004	58.4	0.1	46.4	2.7	0.5	0.2	16.9	2.4	19.3	0.3	10.2
2005	59.0	0.1	45.2	3.2	0.1	0.3	17.0	2.1	19.1	W	10.4
2006	60.0	0.1	42.1	2.7	0.1	0.2	24.2	1.2	25.4	W	10.4
2007	57.7	0.1	40.1	3.3	0.1	0.2	23.6	0.8	24.3	W	10.9
2008	55.1	0.1	39.9	2.7	NA	0.1	19.9	0.9	20.8	W	8.4
2009	49.8	0.2	38.0	3.7	NA	0.1	16.9	0.9	17.8	W	8.5
2010	44.7	0.1	34.8	3.9	0.0	0.1	15.3	0.4	15.8	W	7.6
2011	39.0	0.1	33.3	4.5	0.0	0.1	13.4	0.4	13.8	W	6.4
2012	29.7	0.1	32.5	5.6	0.0	0.1	12.2	0.3	12.5	W	5.5
2013	24.7	0.0	31.4	5.3	0.0	0.1	11.5	0.2	11.7	W	5.2
2014	21.6	0.0	31.3	4.9	W	0.1	11.9	0.1	11.9	W	4.6
2015											
January	24.2	W	30.9	5.3	W	0.2	12.8	0.1	13.0	-	3.6
February	24.6	W	32.4	5.6	W	0.2	13.0	0.1	13.1	-	3.7
March	24.8	W	31.3	4.3	W	NA	12.9	0.1	13.0	-	3.5
April	25.4	W	33.4	4.3	W	W	12.5	0.1	12.6	W	4.6
May	25.9	W	34.9	6.4	W	W	11.7	0.1	11.8	W	3.9
June	26.0	W	36.1	5.8	W	W	13.1	0.0	13.1	W	4.6
July	26.3	W	36.1	6.3	W	W	12.8	0.0	12.8	W	3.6
August	26.0	W	34.8	7.8	W	W	12.9	0.1	13.0	W	4.3
September	25.7	W	33.2	5.2	0.0	W	13.3	0.1	13.4	W	4.5
October	25.9	W	32.6	4.2	W	0.1	12.6	0.2	12.7	-	3.7
November	25.2	W	32.5	5.9	W	NA	12.4	0.1	12.5	-	4.4
December	25.3	W	33.0	5.7	W	NA	11.7	0.1	11.8	-	4.0
2015	25.5	W	33.4	5.6	W	0.1	12.6	0.1	12.7	W	4.0
2016											
January	24.4	W	31.0	8.6	W	NA	12.1	0.1	12.2	W	4.1
February	25.2	W	28.5	7.4	W	NA	12.6	0.1	12.8	-	3.9
March	25.2	W	30.8	6.1	W	0.1	12.2	0.1	12.3	-	4.1
April	25.9	W	30.6	5.8	W	0.1	12.1	0.1	12.1	W	4.2
May	26.0	W	30.9	5.5	W	W	12.5	0.1	12.5	-	3.9
June	26.7	W	32.7	6.0	W	0.0	12.5	0.1	12.6	W	3.8
July	26.3	W	32.1	4.2	W	0.0	12.6	0.0	12.6	W	4.3
August	26.5	W	32.7	6.9	W	0.0	13.6	0.1	13.7	W	4.4
September	26.4	W	R32.2	6.3	W	0.0	13.2	0.1	13.3	W	R4.7
October	25.9	W	30.2	5.0	W	0.1	13.1	0.1	13.2	W	4.4

NA = Not available.

- = No data reported.

W = Withheld to avoid disclosure of individual company data.

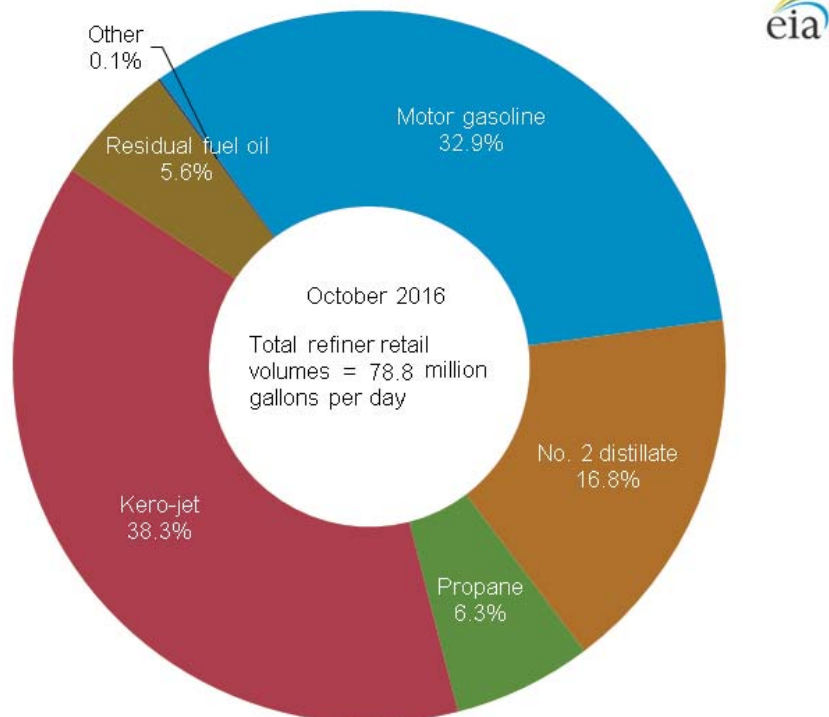
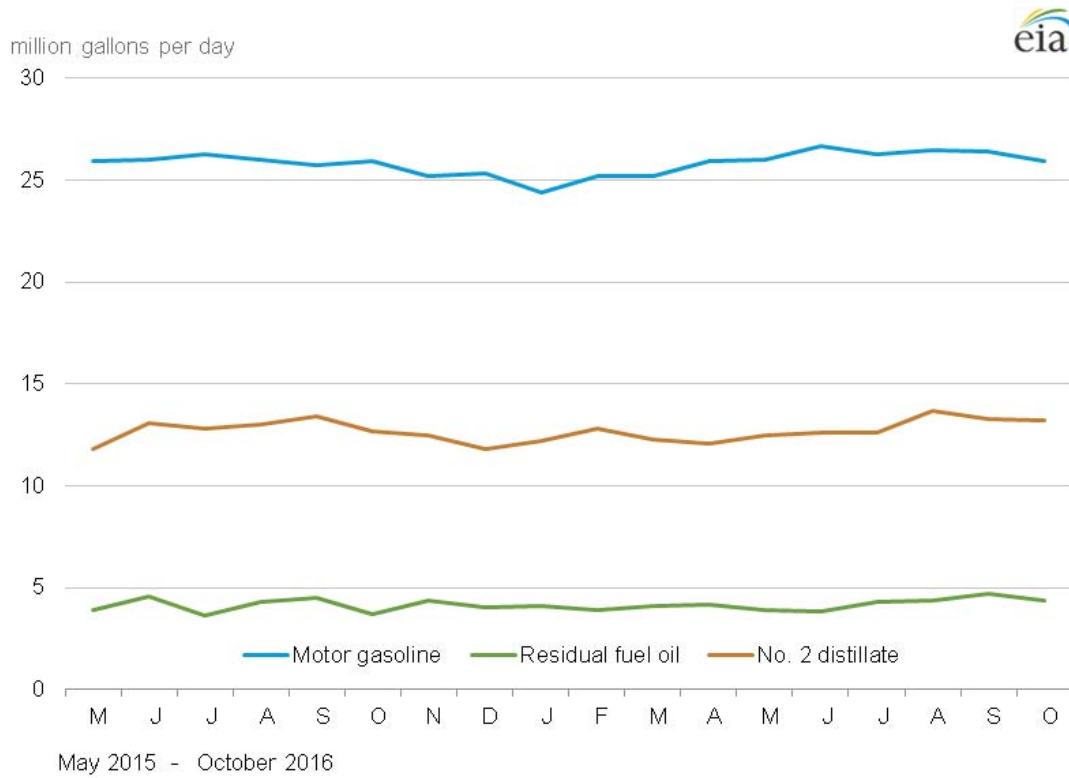
R = Revised data.

[a] Includes No. 4 fuel oil and No. 4 diesel fuel.

Notes: - Motor gasoline averages and totals prior to October 1993 include leaded gasoline. - Values shown for the current month are preliminary. Values shown for previous months are revised. Data through 2015 are final. Totals may not equal the sum of the components due to rounding.

Sources: U.S. Energy Information Administration Form EIA-782A, "Refiners'/Gas Plant Operators' Monthly Petroleum Product Sales Report."

Figure 3. U.S. Refiner retail petroleum product volumes



Source: U.S. Energy Information Administration, Form EIA-782A, "Refiners'/Gas Plant Operators' Monthly Petroleum Product Sales Report."

Table 4. U.S. refiner prices of petroleum products for resale
dollars per gallon excluding taxes

Year month	Motor gasoline	Aviation gasoline	Kerosene type jet fuel	Propane (consumer grade)	Kerosene	No. 2 distillate					Residual fuel oil
						No. 1 distillate	No. 2 diesel fuel	No. 2 fuel oil	Average	No. 4 fuel[a]	
1985	0.835	1.130	0.794	0.398	0.874	0.863	0.772	0.776	0.774	0.672	0.577
1986	0.531	0.912	0.495	0.290	0.606	0.579	0.452	0.486	0.470	0.409	0.305
1987	0.589	0.859	0.538	0.252	0.592	0.599	0.534	0.527	0.531	0.462	0.385
1988	0.577	0.850	0.495	0.240	0.549	0.549	0.473	0.473	0.473	0.425	0.300
1989	0.654	0.950	0.583	0.247	0.669	0.668	0.567	0.565	0.566	0.480	0.360
1990	0.786	1.063	0.773	0.386	0.839	0.838	0.694	0.697	0.695	0.590	0.413
1991	0.699	1.001	0.650	0.349	0.723	0.730	0.615	0.622	0.618	0.556	0.314
1992	0.677	0.991	0.605	0.328	0.632	0.652	0.591	0.579	0.585	0.495	0.308
1993	0.626	0.965	0.577	0.351	0.604	0.646	0.570	0.544	0.559	0.488	0.293
1994	0.599	0.933	0.534	0.324	0.618	0.615	0.529	0.506	0.522	0.462	0.317
1995	0.626	0.975	0.539	0.344	0.580	0.625	0.538	0.511	0.530	0.463	0.363
1996	0.713	1.055	0.646	0.461	0.714	0.751	0.659	0.639	0.653	0.603	0.420
1997	0.700	1.065	0.613	0.416	0.653	0.723	0.606	0.590	0.602	0.551	0.387
1998	0.526	0.912	0.450	0.288	0.465	0.513	0.444	0.422	0.439	0.383	0.280
1999	0.645	1.007	0.533	0.342	0.550	0.634	0.546	0.493	0.536	0.430	0.354
2000	0.963	1.330	0.880	0.595	0.969	1.019	0.898	0.886	0.896	0.778	0.566
2001	0.886	1.256	0.763	0.540	0.821	0.883	0.784	0.756	0.779	0.697	0.476
2002	0.828	1.146	0.716	0.431	0.752	0.805	0.724	0.694	0.718	0.663	0.530
2003	1.002	1.288	0.871	0.607	0.955	1.033	0.883	0.881	0.882	0.793	0.661
2004	1.288	1.627	1.208	0.751	1.271	1.289	1.187	1.125	1.178	1.033	0.681
2005	1.670	2.076	1.723	0.933	1.757	1.801	1.737	1.623	1.720	1.377	0.971
2006	1.969	2.490	1.961	1.031	2.007	2.044	2.012	1.834	1.991	1.395	1.136
2007	2.182	2.758	2.171	1.194	2.249	2.430	2.203	2.072	2.190	1.551	1.350
2008	2.586	3.342	3.020	1.437	2.851	2.712	2.994	2.745	2.970	2.157	1.866
2009	1.767	2.480	1.719	0.921	1.844	2.050	1.713	1.657	1.707	1.561	1.342
2010	2.165	2.874	2.185	1.212	2.299	2.573	2.214	2.147	2.208	W	1.697
2011	2.867	3.739	3.014	1.467	3.065	3.223	3.034	2.907	3.025	2.801	2.336
2012	2.929	3.919	3.080	1.033	3.163	3.349	3.109	3.031	3.103	W	2.457
2013	2.812	3.869	2.953	1.048	3.084	3.340	3.028	2.966	3.025	2.767	2.278
2014	2.618	3.687	2.763	1.165	2.882	3.213	2.812	2.741	2.809	2.333	2.044
2015											
January	1.366	2.324	1.612	0.713	1.900	1.979	1.616	1.669	1.620	1.150	1.023
February	1.637	2.529	1.722	0.748	2.233	2.161	1.861	1.850	1.860	1.355	1.126
March	1.770	2.801	1.731	0.689	2.098	2.246	1.815	1.847	1.817	1.337	1.126
April	1.835	2.827	1.709	0.566	1.800	2.276	1.805	1.740	1.803	1.403	1.114
May	2.080	3.050	1.933	0.475	1.929	2.429	1.973	1.852	1.969	1.460	1.234
June	2.121	3.259	1.813	0.404	1.871	2.359	1.881	1.813	1.880	1.498	1.233
July	2.072	3.217	1.655	0.405	1.701	2.195	1.729	1.654	1.728	1.380	1.122
August	1.838	2.980	1.479	0.402	1.494	2.005	1.562	1.461	1.559	1.133	0.918
September	1.609	2.586	1.443	0.469	1.509	1.902	1.551	1.438	1.549	1.123	0.852
October	1.558	2.475	1.451	0.524	1.555	1.896	1.572	1.411	1.563	W	0.836
November	1.426	2.385	1.400	0.505	1.554	1.836	1.456	1.356	1.449	W	0.787
December	1.356	2.252	1.207	0.499	1.275	1.516	1.176	1.126	1.173	0.953	0.633
2015	1.726	2.764	1.592	0.555	1.735	1.957	1.667	1.565	1.663	1.215	0.996
2016											
January	1.187	2.122	1.022	0.460	1.183	1.263	1.015	0.976	1.012	0.739	0.499
February	1.046	1.908	1.017	0.470	1.155	1.278	1.043	0.948	1.035	W	0.504
March	1.335	2.230	1.100	0.497	1.208	1.413	1.189	1.070	1.182	0.861	0.558
April	1.476	2.457	1.155	0.458	1.193	1.491	1.251	1.113	1.244	0.957	0.616
May	1.613	2.528	1.311	0.511	1.327	1.736	1.432	1.291	1.426	1.046	0.723
June	1.643	2.591	1.428	0.497	1.445	1.864	1.531	1.404	1.527	1.136	0.825
July	1.490	2.505	1.354	0.476	1.297	1.749	1.426	1.305	1.421	W	0.835
August	1.508	2.405	1.313	0.453	1.408	1.759	1.440	1.307	1.437	W	0.815
September	1.514	2.506	1.366	0.494	1.402	1.743	1.471	1.341	R1.466	W	R0.854
October	1.568	2.572	1.471	0.608	1.580	1.842	1.592	1.443	1.584	W	0.938

W = Withheld to avoid disclosure of individual company data.

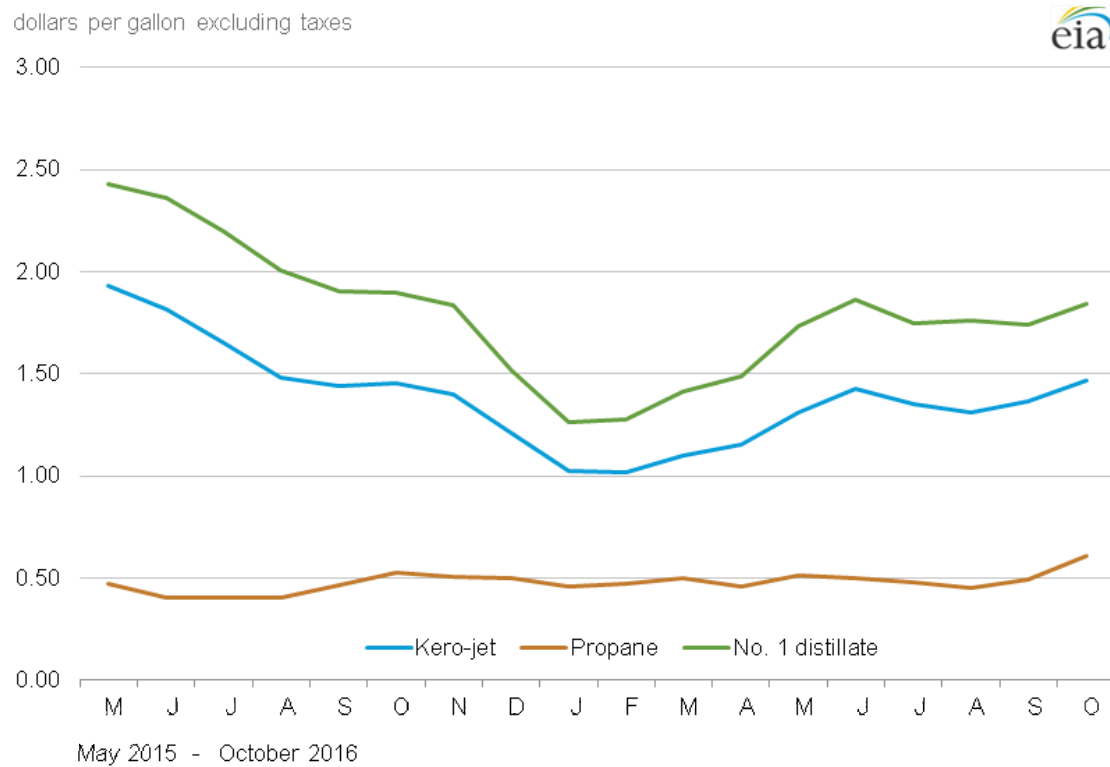
R = Revised data.

[a] Includes No. 4 fuel oil and No. 4 diesel fuel.

Notes: - Motor gasoline averages and totals prior to October 1993 include leaded gasoline. - Values shown for the current month are preliminary. Values shown for previous months may be revised. Data through 2015 are final.

Sources: U.S. Energy Information Administration Form EIA-782A, "Refiners'/Gas Plant Operators' Monthly Petroleum Product Sales Report."

Figure 4. U.S. Refiner wholesale petroleum product prices



Source: U.S. Energy Information Administration, Form EIA-782A, "Refiners'/Gas Plant Operators' Monthly Petroleum Product Sales Report."

Table 5. U.S. refiner volumes of petroleum sales for resale
million gallons per day

Year month	Motor gasoline	Aviation gasoline	Kerosene type jet fuel	Propane (consumer grade)	Kerosene	No. 2 distillate					Residual fuel oil
						No. 1 distillate	No. 2 diesel fuel	No. 2 fuel oil	Average	No. 4 fuel[a]	
1985	256.9	0.7	7.6	29.2	2.4	2.7	43.3	53.9	97.3	1.2	19.9
1986	257.2	0.7	9.2	26.3	2.4	2.5	46.4	53.8	100.3	1.2	18.6
1987	257.2	0.8	10.1	27.0	2.3	2.0	44.3	49.3	93.6	1.5	16.9
1988	263.7	0.7	10.0	27.7	2.7	2.6	47.8	50.1	97.9	1.2	18.9
1989	260.7	0.7	8.6	25.9	2.7	2.7	50.7	46.7	97.5	1.2	21.0
1990	264.8	0.7	8.8	25.5	2.2	2.4	51.9	45.9	97.8	0.8	17.9
1991	261.3	0.7	8.7	25.4	2.1	2.4	51.5	46.9	98.3	0.4	17.8
1992	265.4	0.7	8.0	26.7	2.2	2.3	50.8	48.9	99.7	0.4	15.2
1993	266.9	0.6	8.3	27.9	2.3	2.3	58.0	43.6	101.7	0.4	12.6
1994	276.7	0.7	9.1	28.4	2.5	1.9	72.4	32.9	105.3	0.4	12.8
1995	288.8	0.6	9.9	30.6	2.4	1.7	75.9	31.0	106.9	0.3	13.6
1996	293.6	0.6	11.5	32.9	2.7	1.8	83.7	33.1	116.8	0.3	13.8
1997	292.7	0.6	11.3	32.2	2.5	1.6	88.7	31.2	119.9	0.2	11.5
1998	300.4	0.6	12.2	32.7	2.2	1.4	91.9	27.3	119.2	0.1	15.4
1999	306.9	0.7	15.2	33.6	2.4	1.7	95.5	24.3	119.9	0.2	11.5
2000	304.4	0.6	15.7	34.8	2.3	1.5	98.8	23.3	122.1	0.2	10.5
2001	305.2	0.6	14.3	35.0	2.2	1.4	101.3	25.2	126.4	0.1	10.3
2002	311.8	0.6	12.1	32.9	2.0	1.3	100.8	23.6	124.4	0.1	8.8
2003	311.6	0.5	12.2	36.5	2.3	1.2	108.9	20.9	129.8	0.1	6.7
2004	316.4	0.6	12.7	40.3	2.1	1.3	116.5	19.6	136.1	NA	5.9
2005	321.8	0.5	15.2	35.1	2.0	1.4	118.7	20.6	139.3	NA	4.7
2006	315.6	0.5	15.2	39.4	1.4	1.3	123.2	16.7	139.9	0.3	6.5
2007	319.8	0.5	16.6	41.7	1.4	0.9	135.3	14.5	149.8	0.3	8.2
2008	306.4	0.4	16.5	34.2	1.0	1.0	138.7	14.9	153.6	0.2	9.5
2009	307.4	0.4	15.2	31.8	1.3	1.0	128.0	15.1	143.1	0.1	9.8
2010	312.0	0.4	20.3	28.3	1.4	0.9	135.5	11.5	147.0	W	10.7
2011	296.3	0.4	23.0	28.6	1.2	1.0	134.6	10.7	145.3	0.1	12.2
2012	294.7	0.4	23.5	27.6	1.2	0.8	136.9	10.7	147.6	W	8.8
2013	291.0	0.4	26.4	34.9	1.3	1.0	142.9	7.7	150.6	0.1	9.0
2014	289.2	0.4	27.5	32.9	1.4	1.4	146.3	7.0	153.3	0.1	8.0
2015											
January	281.3	0.3	26.0	45.6	2.0	3.2	141.1	10.9	152.0	0.2	6.5
February	292.0	0.4	26.9	46.6	1.3	3.0	142.6	10.4	153.0	0.1	7.7
March	292.8	0.4	28.4	33.4	0.8	1.1	142.8	7.4	150.2	0.1	7.8
April	302.2	0.5	29.5	29.4	0.8	0.4	150.3	4.6	154.9	0.2	7.6
May	300.0	0.4	27.3	25.0	0.7	0.2	143.9	4.5	148.3	0.1	8.0
June	305.0	0.4	29.8	25.1	1.5	0.2	155.8	2.7	158.5	0.1	8.9
July	305.1	0.6	29.4	23.2	1.3	0.2	151.2	3.0	154.3	0.2	8.3
August	304.1	0.5	29.1	25.9	1.6	0.2	148.6	3.7	152.4	0.1	9.1
September	303.7	0.5	30.0	32.1	1.1	0.5	152.5	3.7	156.2	0.1	8.1
October	299.8	0.6	27.0	28.5	1.1	1.1	149.9	9.0	158.9	W	8.2
November	298.2	0.3	29.6	30.7	1.0	2.0	139.3	10.0	149.3	W	8.0
December	299.9	0.3	30.3	34.8	1.3	2.2	140.0	10.6	150.6	0.1	8.9
2015	298.7	0.4	28.6	31.6	1.2	1.2	146.5	6.7	153.2	0.2	8.1
2016											
January	285.3	0.3	29.3	45.5	1.6	2.4	130.5	12.3	142.8	0.2	9.3
February	295.0	0.4	28.6	43.8	1.5	1.7	132.9	12.8	145.7	W	9.3
March	303.8	0.4	28.5	29.1	0.6	0.7	137.7	8.5	146.2	0.2	9.2
April	302.5	0.6	28.2	26.1	0.8	0.3	137.4	7.7	145.1	0.2	9.0
May	305.8	0.4	29.7	27.4	0.9	0.1	137.5	6.8	144.3	0.1	9.9
June	314.9	0.5	30.9	25.5	0.7	0.1	138.6	4.8	143.4	0.1	8.9
July	315.9	0.5	31.2	24.1	0.9	0.1	131.3	4.9	136.3	W	7.6
August	314.8	0.6	31.8	29.2	1.5	0.2	142.3	3.8	146.1	W	8.1
September	307.8	0.4	32.0	28.4	1.0	0.5	R142.8	R6.0	R148.8	W	R7.9
October	301.9	0.4	30.9	33.1	1.2	1.0	144.3	8.2	152.4	W	7.1

NA = Not available.

W = Withheld to avoid disclosure of individual company data.

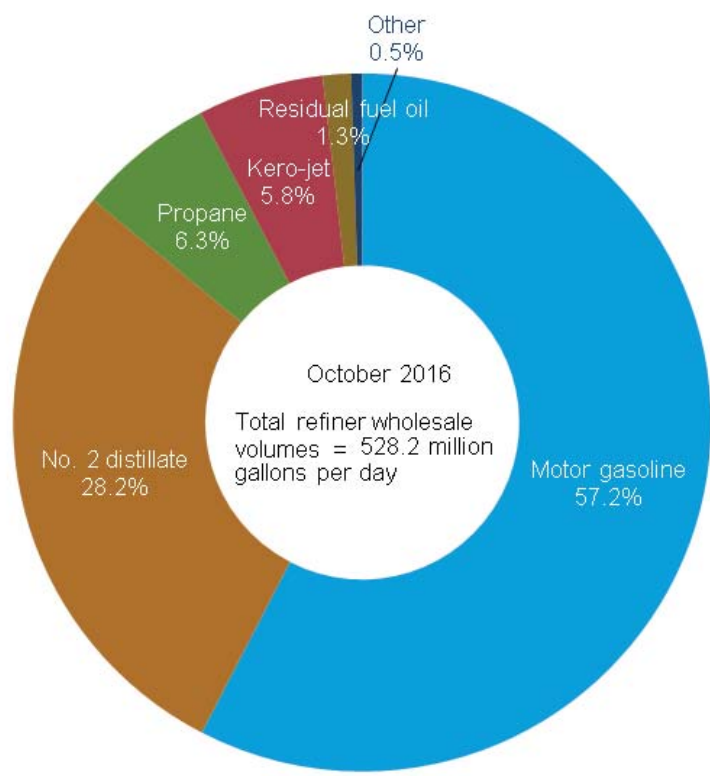
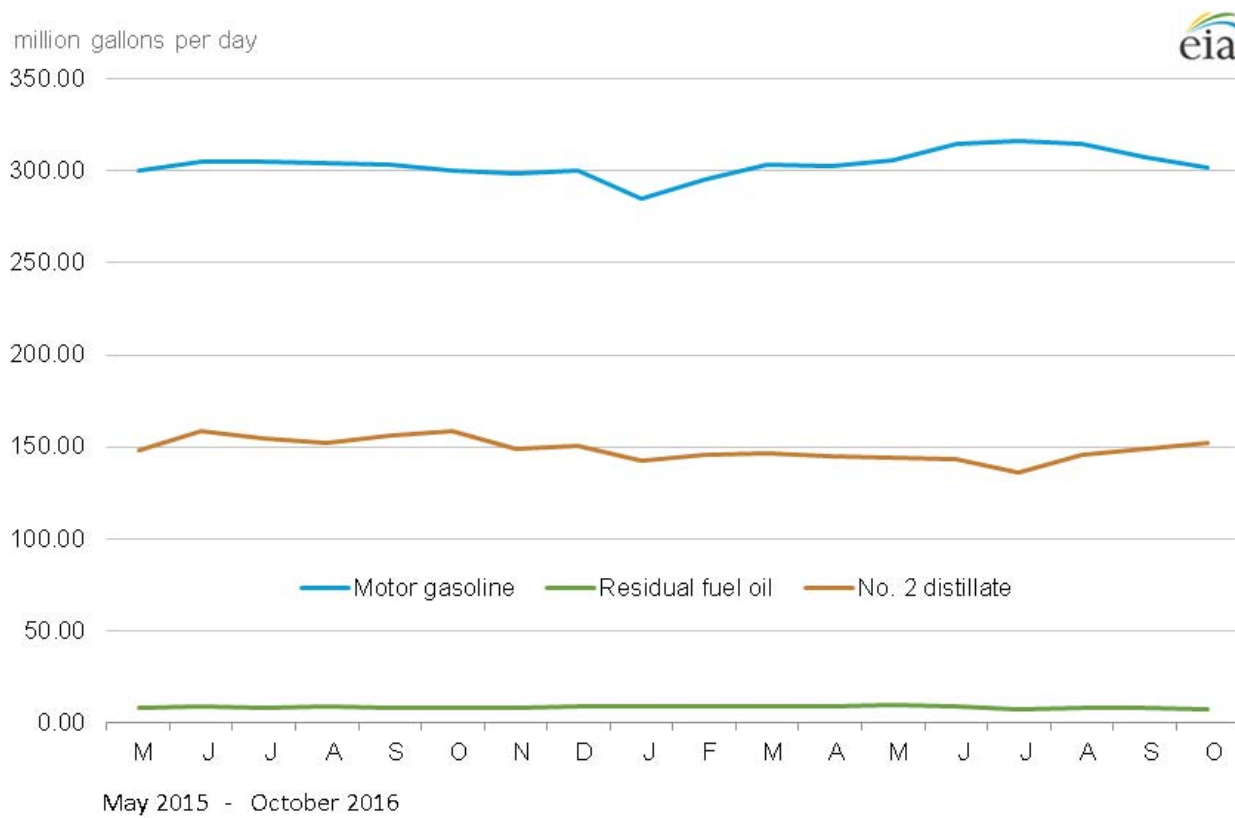
R = Revised data.

[a] Includes No. 4 fuel oil and No. 4 diesel fuel.

Notes: - Motor gasoline averages and totals prior to October 1993 include leaded gasoline. - Values shown for the current month are preliminary. Values shown for previous months are revised. Data through 2015 are final. Totals may not equal the sum of the components due to rounding.

Sources: U.S. Energy Information Administration Form EIA-782A, "Refiners'/Gas Plant Operators' Monthly Petroleum Product Sales Report."

Figure 5. U.S. Refiner wholesale petroleum product volumes



Source: U.S. Energy Information Administration, Form EIA-782A, "Refiners'/Gas Plant Operators' Monthly Petroleum Product Sales Report."

Table 6. U.S. refiner motor gasoline prices by grade and sales type
dollars per gallon excluding taxes

Year month	Regular						Midgrade					
	Sales to end users		Sales for resale				Sales to end users		Sales for resale			
	Through retail outlets	Average[a]	DTW	Rack	Bulk	Average	Through retail outlets	Average[a]	DTW	Rack	Bulk	Average
1985	0.925	0.917	-	-	-	0.843	-	-	-	-	-	-
1986	0.624	0.616	-	-	-	0.522	-	-	-	-	-	-
1987	0.659	0.650	-	-	-	0.569	-	-	-	-	-	-
1988	0.649	0.641	-	-	-	0.548	-	-	-	-	-	-
1989	0.720	0.714	-	-	-	0.618	0.796	0.793	-	-	-	0.686
1990	0.853	0.849	-	-	-	0.758	0.923	0.921	-	-	-	0.814
1991	0.764	0.761	-	-	-	0.672	0.847	0.843	-	-	-	0.733
1992	0.746	0.743	-	-	-	0.645	0.831	0.827	-	-	-	0.708
1993	0.716	0.712	-	-	-	0.593	0.810	0.805	-	-	-	0.660
1994	0.695	0.689	0.646	0.547	0.502	0.566	0.791	0.785	0.704	0.584	NA	0.638
1995	0.723	0.717	0.682	0.576	0.534	0.593	0.813	0.808	0.737	0.619	NA	0.670
1996	0.812	0.807	0.770	0.672	0.622	0.685	0.901	0.896	0.824	0.709	NA	0.759
1997	0.803	0.798	0.764	0.656	0.615	0.673	0.898	0.895	0.822	0.694	0.711	0.749
1998	0.634	0.630	0.596	0.481	0.449	0.499	0.731	0.728	0.655	0.521	NA	0.576
1999	0.747	0.742	0.730	0.605	0.542	0.620	0.838	0.835	0.784	0.639	NA	0.696
2000	1.077	1.073	1.042	0.927	0.873	0.942	1.171	1.168	1.099	0.960	-	1.013
2001	1.000	0.997	0.977	0.848	0.786	0.865	1.103	1.100	1.042	0.888	-	0.945
2002	0.915	0.912	0.886	0.801	0.735	0.806	1.013	1.010	0.968	0.839	-	0.885
2003	1.127	1.123	1.134	0.965	0.888	0.981	1.222	1.218	1.196	1.004	-	1.061
2004	1.407	1.404	1.414	1.257	1.182	1.269	1.503	1.499	1.469	1.296	-	1.340
2005	1.805	1.802	1.765	1.653	1.568	1.654	1.896	1.893	1.821	1.681	-	1.708
2006	2.102	2.099	2.082	1.944	1.866	1.950	2.216	2.213	2.157	1.987	-	2.016
2007	2.318	2.315	2.278	2.161	2.074	2.161	2.440	2.438	2.351	2.226	-	2.245
2008	2.752	2.748	2.702	2.558	2.525	2.570	2.880	2.879	2.775	2.588	-	2.610
2009	1.860	1.856	1.866	1.744	1.668	1.747	1.998	1.997	1.957	1.762	-	1.784
2010	2.275	2.270	2.261	2.144	2.073	2.146	2.416	2.416	2.357	2.168	-	2.185
2011	3.028	3.021	2.961	2.846	2.762	2.847	3.165	3.165	3.057	2.880	-	2.893
2012	3.132	3.118	3.086	2.892	2.836	2.904	3.291	3.290	3.194	2.906	-	2.925
2013	3.029	3.010	2.907	2.769	2.747	2.779	3.200	3.199	3.038	2.862	-	2.876
2014	2.832	2.811	2.767	2.574	2.520	2.584	3.031	3.030	2.903	2.716	-	2.738
2015												
January	1.618	1.616	1.547	1.318	1.302	1.332	1.858	1.859	1.671	1.440	-	1.468
February	1.809	1.807	1.861	1.589	1.535	1.604	2.026	2.025	2.025	1.710	-	1.748
March	1.990	1.987	2.198	1.696	1.698	1.732	2.281	2.279	2.303	1.834	-	1.889
April	1.996	1.995	2.164	1.771	1.746	1.796	2.264	2.262	2.310	1.903	-	1.950
May	2.253	2.252	2.604	1.999	1.953	2.037	2.563	2.560	2.741	2.135	-	2.199
June	2.317	2.315	2.451	2.051	2.002	2.075	2.571	2.569	2.594	2.202	-	2.244
July	2.267	2.266	2.645	1.971	1.983	2.017	2.595	2.593	2.802	2.157	-	2.222
August	2.149	2.147	2.358	1.742	1.695	1.781	2.470	2.469	2.479	1.942	-	1.998
September	1.847	1.845	2.018	1.530	1.450	1.556	2.177	2.176	2.171	1.718	-	1.768
October	1.787	1.785	1.856	1.491	1.406	1.510	2.056	2.056	2.051	1.674	-	1.717
November	1.644	1.643	1.756	1.354	1.340	1.380	1.919	1.919	1.921	1.522	-	1.569
December	1.531	1.530	1.730	1.282	1.260	1.310	1.837	1.836	1.922	1.444	-	1.502
2015	1.939	1.938	2.105	1.654	1.604	1.681	2.225	2.224	2.252	1.824	-	1.872
2016												
January	1.426	1.426	1.648	1.101	1.148	1.142	1.760	1.759	1.794	1.257	-	1.321
February	1.257	1.256	1.351	0.977	0.985	1.003	1.555	1.554	1.499	1.118	-	1.165
March	1.487	1.485	1.638	1.273	1.198	1.291	1.745	1.744	1.808	1.441	-	1.486
April	1.658	1.656	1.757	1.412	1.336	1.431	1.927	1.926	1.886	1.574	-	1.612
May	1.806	1.806	1.805	1.559	1.455	1.568	2.047	2.046	1.928	1.716	-	1.741
June	1.901	1.900	1.866	1.585	1.513	1.598	2.123	2.121	1.996	1.749	-	1.776
July	1.729	1.729	1.781	1.421	1.411	1.444	2.025	2.024	1.893	1.592	-	1.627
August	1.687	1.687	1.643	1.458	1.390	1.465	1.945	1.944	1.781	1.619	-	1.637
September	1.716	1.716	1.759	1.449	1.438	1.469	1.996	1.995	1.895	1.617	-	1.650
October	1.748	1.748	1.791	1.505	1.478	1.523	2.027	2.027	1.935	1.676	-	1.706

See footnotes at end of table.

Table 6. U.S. refiner motor gasoline prices by grade and sales type (cont.)

dollars per gallon excluding taxes

Year month	Premium						All grades					
	Sales to end users		Sales for resale				Sales to end users		Sales for resale			
	Through retail outlets	Average[a]	DTW	Rack	Bulk	Average	Through retail outlets	Average[a]	DTW	Rack	Bulk	Average
1985	1.030	1.023	-	-	-	0.922	0.921	0.912	-	-	-	0.835
1986	0.748	0.737	-	-	-	0.610	0.632	0.624	-	-	-	0.531
1987	0.790	0.784	-	-	-	0.671	0.678	0.669	-	-	-	0.589
1988	0.794	0.788	-	-	-	0.672	0.681	0.673	-	-	-	0.577
1989	0.874	0.868	-	-	-	0.749	0.763	0.756	-	-	-	0.654
1990	0.990	0.985	-	-	-	0.874	0.888	0.883	-	-	-	0.786
1991	0.912	0.907	-	-	-	0.792	0.800	0.797	-	-	-	0.699
1992	0.920	0.914	-	-	-	0.774	0.792	0.787	-	-	-	0.677
1993	0.896	0.889	-	-	-	0.722	0.765	0.759	-	-	-	0.626
1994	0.873	0.865	0.787	0.640	0.556	0.695	0.744	0.738	0.693	0.567	0.509	0.599
1995	0.897	0.890	0.822	0.673	0.583	0.722	0.771	0.765	0.729	0.598	0.540	0.626
1996	0.979	0.972	0.897	0.762	0.669	0.803	0.853	0.847	0.809	0.690	0.627	0.713
1997	0.979	0.973	0.895	0.749	0.658	0.792	0.844	0.839	0.803	0.674	0.620	0.700
1998	0.811	0.805	0.726	0.573	0.489	0.617	0.678	0.673	0.636	0.500	0.454	0.526
1999	0.912	0.906	0.851	0.687	0.585	0.726	0.785	0.781	0.765	0.621	0.549	0.645
2000	1.250	1.242	1.174	1.017	0.927	1.055	1.111	1.106	1.074	0.940	0.879	0.963
2001	1.181	1.175	1.112	0.936	0.830	0.980	1.035	1.032	1.009	0.862	0.791	0.886
2002	1.094	1.088	1.030	0.899	0.800	0.928	0.949	0.947	0.922	0.816	0.741	0.828
2003	1.312	1.305	1.269	1.064	0.955	1.113	1.160	1.156	1.164	0.978	0.893	1.002
2004	1.603	1.596	1.553	1.361	1.274	1.408	1.439	1.435	1.442	1.270	1.187	1.288
2005	2.000	1.992	1.901	1.760	1.696	1.789	1.833	1.829	1.791	1.664	1.576	1.670
2006	2.326	2.320	2.231	2.093	1.988	2.117	2.131	2.128	2.110	1.959	1.873	1.969
2007	2.558	2.552	2.460	2.339	2.209	2.357	2.349	2.345	2.311	2.180	2.080	2.182
2008	2.971	2.965	2.846	2.718	2.689	2.746	2.778	2.775	2.726	2.572	2.532	2.586
2009	2.128	2.122	2.059	1.941	1.816	1.958	1.892	1.888	1.899	1.761	1.675	1.767
2010	2.543	2.536	2.446	2.334	2.187	2.346	2.306	2.301	2.293	2.162	2.078	2.165
2011	3.291	3.283	3.139	3.047	2.873	3.049	3.058	3.050	2.990	2.864	2.769	2.867
2012	3.413	3.400	3.273	3.149	3.102	3.163	3.168	3.154	3.117	2.916	2.861	2.929
2013	3.320	3.307	3.108	3.076	3.010	3.075	3.068	3.049	2.942	2.801	2.774	2.812
2014	3.152	3.138	2.941	2.878	2.783	2.880	2.876	2.855	2.800	2.606	2.548	2.618
2015												
January	2.012	2.008	1.741	1.615	1.481	1.625	1.674	1.673	1.588	1.350	1.317	1.366
February	2.178	2.174	2.078	1.881	1.728	1.900	1.861	1.858	1.906	1.620	1.550	1.637
March	2.456	2.449	2.386	2.021	1.910	2.066	2.057	2.054	2.236	1.731	1.716	1.770
April	2.434	2.429	2.378	2.105	1.932	2.130	2.060	2.058	2.208	1.808	1.765	1.835
May	2.744	2.738	2.809	2.354	2.176	2.402	2.324	2.322	2.645	2.038	1.974	2.080
June	2.722	2.717	2.660	2.439	2.356	2.464	2.376	2.374	2.494	2.094	2.030	2.121
July	2.756	2.751	2.873	2.422	2.452	2.480	2.340	2.338	2.691	2.023	2.025	2.072
August	2.627	2.621	2.560	2.214	2.035	2.247	2.221	2.218	2.400	1.796	1.731	1.838
September	2.343	2.337	2.229	1.969	1.746	1.991	1.922	1.920	2.063	1.581	1.475	1.609
October	2.228	2.222	2.093	1.889	1.680	1.904	1.851	1.849	1.907	1.536	1.437	1.558
November	2.113	2.109	1.982	1.741	1.505	1.756	1.713	1.711	1.805	1.398	1.359	1.426
December	2.039	2.034	1.979	1.667	1.459	1.695	1.605	1.604	1.784	1.325	1.281	1.356
2015	2.392	2.386	2.312	2.035	1.845	2.061	2.006	2.003	2.148	1.696	1.627	1.726
2016												
January	1.963	1.958	1.873	1.473	1.309	1.519	1.506	1.505	1.696	1.143	1.164	1.187
February	1.760	1.757	1.578	1.322	1.140	1.346	1.333	1.332	1.402	1.016	1.005	1.046
March	1.938	1.935	1.892	1.633	1.421	1.656	1.554	1.552	1.694	1.314	1.218	1.335
April	2.121	2.119	1.999	1.779	1.526	1.788	1.727	1.725	1.809	1.454	1.366	1.476
May	2.242	2.240	2.043	1.928	1.658	1.925	1.871	1.869	1.857	1.602	1.479	1.613
June	2.319	2.316	2.109	1.956	1.753	1.962	1.962	1.961	1.919	1.628	1.540	1.643
July	2.225	2.223	2.005	1.788	1.576	1.801	1.804	1.804	1.831	1.467	1.428	1.490
August	2.143	2.141	1.878	1.813	1.575	1.810	1.755	1.754	1.696	1.501	1.404	1.508
September	2.192	2.189	1.999	1.827	1.592	1.836	1.789	1.788	1.813	1.493	1.454	1.514
October	2.237	2.234	2.036	1.884	1.669	1.892	1.819	1.819	1.846	1.548	1.501	1.568

NA = Not available.

- = No data reported.

R = Revised data.

[a] Includes sales through retail outlets as well as all direct sales to end users that were not made through company-operated retail outlets, e.g., sales to agricultural customers, commercial sales, and industrial sales.

Notes: - Motor gasoline averages and totals prior to October 1993 include leaded gasoline. Includes sales through retail outlets as well as all direct sales to end users that were not made through company-operated retail outlets, e.g., sales to agricultural customers, commercial sales, and industrial sales. - Data for the 4th quarter of 1993 were derived from two separate survey systems. The DTW, Rack, and Bulk components were derived from the revised EIA-782 survey system, while the End-Use and Average Resale categories were derived from the predecessor EIA-782 survey system. Therefore, the DTW, Rack, and Bulk components are not consistent with the Average Resale category. Beginning January 1994, all data are from the revised EIA-782 survey system and are consistent. - Values shown for the current month are preliminary. Values shown for previous months may be revised. Data through 2015 are final.

Sources: U.S. Energy Information Administration Form EIA-782A, "Refiners'/Gas Plant Operators' Monthly Petroleum Product Sales Report."

Table 7. U.S. refiner motor gasoline volumes by grade and sales type
million gallons per day

Year month	Regular						Midgrade					
	Sales to end users		Sales for resale				Sales to end users		Sales for resale			
	Through retail outlets	Total[a]	DTW	Rack	Bulk	Total	Through retail outlets	Total[a]	DTW	Rack	Bulk	Total
1985	26.2	29.9	-	-	-	119.7	-	-	-	-	-	-
1986	30.9	34.7	-	-	-	127.0	-	-	-	-	-	-
1987	32.7	36.1	-	-	-	141.9	-	-	-	-	-	-
1988	34.2	37.3	-	-	-	153.6	-	-	-	-	-	-
1989	34.3	36.8	-	-	-	155.7	4.9	5.1	-	-	-	16.4
1990	36.7	38.8	-	-	-	174.5	7.4	7.6	-	-	-	23.1
1991	38.4	40.4	-	-	-	180.9	7.9	8.2	-	-	-	23.7
1992	36.5	38.4	-	-	-	182.2	8.9	9.2	-	-	-	27.5
1993	35.6	37.2	-	-	-	184.0	8.7	8.9	-	-	-	27.7
1994	34.3	35.9	47.7	120.3	24.3	192.3	8.5	8.7	12.8	15.7	0.2	28.7
1995	34.3	35.9	43.8	126.2	31.8	201.8	9.6	9.8	13.3	17.2	0.1	30.6
1996	37.2	38.9	46.5	131.9	35.2	213.6	9.5	9.8	12.9	16.6	NA	29.5
1997	40.5	42.4	46.2	135.7	33.9	215.8	9.7	10.0	12.1	16.3	NA	28.4
1998	41.7	43.2	44.4	138.9	37.1	220.3	10.1	10.3	11.1	16.3	NA	27.4
1999	41.6	43.0	45.6	147.5	34.5	227.6	9.9	10.1	10.5	16.1	NA	26.6
2000	43.6	45.0	47.5	159.3	32.4	239.3	8.6	8.7	8.8	14.2	-	23.0
2001	45.0	46.3	47.2	163.2	33.0	243.5	8.3	8.4	7.8	13.3	-	21.1
2002	46.2	47.4	46.9	163.0	39.2	249.2	8.3	8.5	7.4	13.4	-	20.8
2003	47.3	48.6	43.5	171.4	40.1	255.0	7.8	7.9	5.5	13.1	-	18.6
2004	44.5	45.8	41.1	182.1	42.2	265.4	6.4	6.5	4.4	12.7	-	17.0
2005	46.4	47.5	37.5	189.8	45.8	273.2	5.9	6.0	3.2	13.5	-	16.7
2006	48.2	49.4	34.8	196.0	40.8	271.7	5.5	5.5	2.4	11.7	-	14.1
2007	47.0	47.8	34.0	195.7	46.8	276.6	5.0	5.0	2.0	11.7	-	13.7
2008	45.6	46.6	32.5	192.7	43.7	268.8	4.1	4.2	1.5	11.0	-	12.5
2009	40.5	42.2	32.4	196.8	39.3	268.5	3.5	3.5	1.3	10.2	-	11.5
2010	36.6	38.1	29.0	202.2	41.4	272.5	3.0	3.1	0.9	9.9	-	10.8
2011	32.1	33.5	24.9	204.9	30.5	260.2	2.5	2.5	0.7	8.5	-	9.2
2012	23.6	25.2	22.4	209.3	25.8	257.5	1.9	1.9	0.6	8.3	-	8.9
2013	19.3	20.9	22.7	209.2	22.3	254.2	1.6	1.6	0.6	6.7	-	7.2
2014	16.7	18.2	18.9	216.9	18.9	254.8	1.4	1.4	0.4	3.1	-	3.5
2015												
January	19.8	20.1	17.2	210.9	19.4	247.5	1.6	1.6	0.3	2.5	-	2.9
February	20.2	20.5	18.1	218.4	21.2	257.7	1.7	1.7	0.4	2.6	-	3.0
March	20.3	20.6	18.3	219.1	20.4	257.9	1.7	1.7	0.4	2.7	-	3.1
April	20.7	21.1	18.2	226.1	20.7	265.0	1.7	1.7	0.4	2.8	-	3.2
May	21.2	21.5	18.0	225.5	19.3	262.8	1.8	1.8	0.4	3.0	-	3.3
June	21.3	21.6	18.3	230.9	18.0	267.2	1.8	1.8	0.4	3.0	-	3.3
July	21.5	21.8	18.0	232.1	16.9	267.0	1.8	1.8	0.3	3.0	-	3.3
August	21.2	21.5	18.3	228.4	18.5	265.2	1.8	1.8	0.3	2.9	-	3.2
September	21.0	21.3	18.0	225.2	22.4	265.5	1.8	1.8	0.3	2.7	-	3.1
October	21.2	21.5	18.0	227.1	16.8	262.0	1.8	1.8	0.3	2.6	-	3.0
November	20.5	20.8	17.7	222.8	20.1	260.6	1.7	1.7	0.3	2.5	-	2.9
December	20.6	20.9	17.9	222.9	21.9	262.6	1.7	1.8	0.3	2.5	-	2.8
2015	20.8	21.1	18.0	224.2	19.6	261.8	1.7	1.8	0.3	2.7	-	3.1
2016												
January	19.9	20.2	17.2	214.4	18.2	249.8	1.7	1.7	0.3	2.4	-	2.8
February	20.4	20.7	18.0	222.4	16.7	257.0	1.8	1.8	0.3	2.4	-	2.7
March	20.5	20.7	18.1	224.8	23.1	266.0	1.8	1.8	0.3	2.4	-	2.8
April	21.0	21.3	18.4	228.7	16.0	263.1	1.8	1.8	0.3	2.5	-	2.9
May	21.1	21.3	18.3	228.6	19.1	266.0	1.8	1.8	0.3	2.6	-	3.0
June	21.7	21.9	18.2	235.5	20.4	274.1	1.9	1.9	0.3	2.7	-	3.1
July	21.4	21.6	18.0	232.3	22.7	273.0	1.9	1.9	0.3	2.7	-	3.0
August	21.5	21.7	18.4	233.9	21.8	274.1	1.9	1.9	0.3	2.7	-	3.0
September	21.4	21.6	18.0	229.9	20.6	268.5	1.9	1.9	0.3	2.5	-	2.8
October	21.1	21.4	17.8	229.7	16.2	263.6	1.8	1.8	0.3	2.4	-	2.7

See footnotes at end of table.

Table 7. U.S. refiner motor gasoline volumes by grade and sales type (cont.)

million gallons per day

Year month	Premium						All grades					
	Sales to end users		Sales for resale				Sales to end users		Sales for resale			
	Through retail outlets	Total[a]	DTW	Rack	Bulk	Total	Through retail outlets	Total[a]	DTW	Rack	Bulk	Total
1985	9.2	10.0	-	-	-	38.0	50.5	57.5	-	-	-	256.9
1986	9.0	9.8	-	-	-	45.1	54.2	61.2	-	-	-	257.2
1987	11.2	11.6	-	-	-	53.0	55.7	61.0	-	-	-	257.2
1988	13.8	14.5	-	-	-	62.4	56.7	61.0	-	-	-	263.7
1989	13.5	14.2	-	-	-	60.8	57.5	61.2	-	-	-	260.7
1990	11.2	11.7	-	-	-	53.7	57.4	60.3	-	-	-	264.8
1991	10.5	10.9	-	-	-	48.3	58.4	61.2	-	-	-	261.3
1992	10.3	10.7	-	-	-	51.7	56.4	59.0	-	-	-	265.4
1993	10.3	10.6	-	-	-	52.8	54.9	57.2	-	-	-	266.9
1994	10.0	10.3	22.6	29.9	3.2	55.7	52.8	55.0	83.1	165.9	27.7	276.7
1995	9.8	10.2	20.8	31.5	4.2	56.4	53.7	55.9	77.9	174.8	36.0	288.8
1996	8.4	8.8	18.2	28.3	4.1	50.5	55.1	57.5	77.5	176.8	39.3	293.6
1997	8.4	8.8	16.9	27.6	4.0	48.5	58.7	61.1	75.1	179.6	38.0	292.7
1998	9.6	9.9	17.4	30.9	4.3	52.7	61.4	63.3	73.0	186.1	41.4	300.4
1999	8.7	8.9	16.1	31.0	5.7	52.7	60.2	62.0	72.2	194.6	40.2	306.9
2000	6.9	7.1	13.0	24.4	4.7	42.1	59.1	60.9	69.4	197.9	37.1	304.4
2001	7.1	7.3	12.3	24.6	3.7	40.6	60.4	62.0	67.4	201.1	36.7	305.2
2002	7.5	7.8	12.5	25.2	4.1	41.8	62.1	63.6	66.9	201.7	43.3	311.8
2003	7.1	7.3	10.8	23.9	3.3	38.1	62.2	63.8	59.8	208.4	43.4	311.6
2004	5.9	6.1	9.4	22.3	2.3	34.0	56.9	58.4	54.8	217.1	44.5	316.4
2005	5.2	5.4	8.0	20.9	3.0	31.9	57.5	59.0	48.7	224.2	48.9	321.8
2006	4.9	5.1	7.1	20.3	2.4	29.7	58.6	60.0	44.3	228.0	43.2	315.6
2007	4.7	4.8	6.9	20.2	2.4	29.5	56.7	57.7	43.0	227.6	49.2	319.8
2008	4.2	4.3	5.9	17.1	1.9	25.0	53.9	55.1	39.9	220.8	45.7	306.4
2009	4.0	4.1	6.3	19.1	2.1	27.4	48.0	49.8	39.9	226.1	41.4	307.4
2010	3.4	3.5	5.7	20.9	2.1	28.7	43.1	44.7	35.7	232.9	43.5	312.0
2011	2.9	3.0	4.6	20.3	2.0	26.9	37.5	39.0	30.1	233.7	32.5	296.3
2012	2.5	2.6	4.2	21.6	2.6	28.4	28.0	29.7	27.2	239.2	28.4	294.7
2013	2.2	2.3	4.3	22.7	2.6	29.6	23.0	24.7	27.6	238.6	24.8	291.0
2014	1.9	2.0	4.2	24.4	2.3	30.9	19.9	21.6	23.5	244.5	21.2	289.2
2015												
January	2.5	2.5	4.4	24.7	1.8	30.9	23.9	24.2	21.9	238.2	21.1	281.3
February	2.5	2.5	4.5	25.1	1.8	31.4	24.3	24.6	22.9	246.1	23.0	292.0
March	2.5	2.5	4.5	25.5	1.8	31.8	24.4	24.8	23.1	247.3	22.3	292.8
April	2.6	2.6	4.6	27.2	2.3	34.0	25.0	25.4	23.1	256.1	23.0	302.2
May	2.6	2.6	4.4	27.5	2.0	33.9	25.5	25.9	22.7	256.0	21.3	300.0
June	2.6	2.6	4.5	28.3	1.6	34.4	25.7	26.0	23.2	262.2	19.5	305.0
July	2.6	2.7	4.4	28.7	1.7	34.8	26.0	26.3	22.7	263.9	18.5	305.1
August	2.7	2.7	4.6	28.9	2.2	35.7	25.7	26.0	23.2	260.2	20.7	304.1
September	2.7	2.7	4.7	28.4	2.0	35.1	25.4	25.7	23.0	256.3	24.4	303.7
October	2.6	2.7	4.7	28.0	2.1	34.9	25.6	25.9	23.1	257.8	19.0	299.8
November	2.6	2.7	4.7	27.5	2.5	34.7	24.8	25.2	22.7	252.9	22.6	298.2
December	2.6	2.7	4.7	27.2	2.6	34.5	25.0	25.3	22.9	252.5	24.5	299.9
2015	2.6	2.6	4.5	27.3	2.0	33.8	25.1	25.5	22.9	254.2	21.6	298.7
2016												
January	2.5	2.6	4.6	26.1	2.1	32.8	24.1	24.4	22.1	243.0	20.2	285.3
February	2.7	2.7	5.0	27.8	2.5	35.3	24.9	25.2	23.3	252.6	19.1	295.0
March	2.7	2.7	4.9	27.7	2.3	35.0	25.0	25.2	23.4	255.0	25.4	303.8
April	2.7	2.8	5.0	28.6	3.0	36.5	25.6	25.9	23.7	259.8	19.0	302.5
May	2.8	2.8	5.0	29.2	2.5	36.8	25.7	26.0	23.7	260.4	21.7	305.8
June	2.8	2.9	5.0	30.1	2.6	37.7	26.4	26.7	23.6	268.3	23.0	314.9
July	2.8	2.9	5.0	32.3	2.7	40.0	26.1	26.3	23.3	267.3	25.3	315.9
August	2.9	2.9	5.2	30.6	1.9	37.6	26.2	26.5	23.9	267.2	23.7	314.8
September	2.9	2.9	5.0	29.1	2.4	36.5	26.2	26.4	23.4	261.5	23.0	307.8
October	2.7	2.7	4.9	28.4	2.2	35.5	25.6	25.9	23.0	260.5	18.4	301.9

NA = Not available.

- = No data reported.

R = Revised data.

[a] Includes sales through retail outlets as well as all direct sales to end users that were not made through company-operated retail outlets, e.g., sales to agricultural customers, commercial sales, and industrial sales.

Notes: - Motor gasoline averages and totals prior to October 1993 include leaded gasoline. - Data for the 4th quarter of 1993 were derived from two separate survey systems. The DTW, Rack, and Bulk components were derived from the revised EIA-782 survey system, while the End-Use and Average Resale categories were derived from the predecessor EIA-782 survey system. Therefore, the DTW, Rack, and Bulk components are not consistent with the Average Resale category. Beginning January 1994, all data are from the revised EIA-782 survey system and are consistent. - Values shown for the current month are preliminary. Values shown for previous months are revised. Data through 2015 are final. Totals may not equal the sum of the components due to rounding.

Sources: U.S. Energy Information Administration Form EIA-782A, "Refiners'/Gas Plant Operators' Monthly Petroleum Product Sales Report."

Table 8. U.S. refiner conventional motor gasoline prices by grade and sales type
dollars per gallon excluding taxes

Year month	Regular						Midgrade					
	Sales to end users		Sales for resale				Sales to end users		Sales for resale			
	Through retail outlets	Average[a]	DTW	Rack	Bulk	Average	Through retail outlets	Average[a]	DTW	Rack	Bulk	Average
1994	0.687	0.681	0.636	0.545	0.500	0.558	0.784	0.778	0.694	NA	NA	0.627
1995	0.710	0.704	0.651	0.570	0.525	0.573	0.800	0.794	0.711	0.610	NA	0.637
1996	0.797	0.791	0.743	0.665	0.607	0.664	0.884	0.878	0.801	0.700	NA	0.726
1997	0.781	0.775	0.719	0.649	0.600	0.648	0.874	0.869	0.783	0.685	W	0.708
1998	0.611	0.606	0.551	0.473	0.439	0.473	0.704	0.700	0.613	0.511	W	0.533
1999	0.710	0.706	0.676	0.595	0.520	0.590	0.802	0.799	0.734	0.628	-	0.650
2000	1.045	1.040	0.994	0.913	0.844	0.909	1.136	1.133	1.052	0.945	-	0.964
2001	0.961	0.958	0.914	0.835	0.761	0.830	1.058	1.055	0.984	0.872	-	0.889
2002	0.893	0.891	0.836	0.791	0.723	0.782	0.985	0.981	0.906	0.829	-	0.839
2003	1.081	1.078	1.040	0.952	0.871	0.942	1.173	1.168	1.108	0.994	-	1.006
2004	1.368	1.364	1.325	1.244	1.170	1.234	1.454	1.450	1.391	1.287	-	1.296
2005	1.780	1.776	1.709	1.643	1.555	1.629	1.861	1.857	1.781	1.675	-	1.682
2006	2.062	2.060	2.054	1.925	1.864	1.918	2.166	2.164	2.134	1.972	-	1.980
2007	2.292	2.289	2.242	2.153	2.065	2.138	2.392	2.390	2.298	2.222	-	2.225
2008	2.717	2.714	2.698	2.560	2.513	2.555	2.829	2.829	2.734	2.581	-	2.586
2009	1.825	1.821	1.817	1.735	1.657	1.723	1.936	1.936	1.877	1.751	-	1.755
2010	2.244	2.239	2.244	2.139	2.065	2.128	2.361	2.361	2.336	2.160	-	2.164
2011	2.998	2.989	2.916	2.834	2.751	2.825	3.105	3.104	3.033	2.869	-	2.872
2012	3.076	3.060	2.999	2.867	2.816	2.864	3.202	3.202	3.117	2.886	-	2.890
2013	2.975	2.954	2.797	2.745	2.724	2.745	3.110	3.110	2.947	2.850	-	2.852
2014	2.775	2.753	2.706	2.558	2.502	2.556	2.932	2.931	2.858	2.703	-	2.711
2015												
January	1.554	1.554	1.439	1.305	1.286	1.306	1.748	1.750	1.639	1.431	-	1.442
February	1.737	1.735	1.671	1.564	W	1.562	1.893	1.891	1.882	1.677	-	1.687
March	1.852	1.851	1.949	1.662	1.683	1.670	2.034	2.031	2.121	1.793	-	1.810
April	1.882	1.883	1.942	1.731	1.710	1.734	2.067	2.065	2.124	1.856	-	1.870
May	2.096	2.097	2.244	1.950	1.906	1.953	2.285	2.283	2.451	2.081	-	2.099
June	2.221	2.220	2.271	2.023	W	2.025	2.396	2.393	2.462	2.178	-	2.192
July	2.123	2.124	2.279	1.919	W	1.929	2.327	2.325	2.466	2.105	-	2.122
August	2.020	2.018	2.066	1.708	1.666	1.712	2.230	2.229	2.316	1.919	-	1.939
September	1.744	1.743	1.768	1.512	W	1.508	1.984	1.985	2.078	1.706	-	1.725
October	1.722	1.721	1.590	1.478	W	1.473	1.922	1.923	1.933	1.665	-	1.679
November	1.562	1.562	1.549	1.333	W	1.336	1.768	1.768	1.811	1.500	-	1.518
December	1.430	1.431	1.489	1.251	1.235	1.255	1.648	1.648	1.750	1.399	-	1.419
2015	1.833	1.833	1.858	1.625	1.575	1.625	2.033	2.032	2.090	1.794	-	1.809
2016												
January	1.304	1.305	1.296	1.073	W	1.083	1.524	1.524	1.578	1.221	-	1.241
February	1.167	1.167	1.103	0.960	W	0.964	1.377	1.376	1.349	1.098	-	1.112
March	1.413	1.412	1.329	1.248	1.175	1.242	1.602	1.601	1.558	1.408	-	1.416
April	1.577	1.576	1.459	1.383	1.310	1.379	1.782	1.781	1.653	1.548	-	1.554
May	1.749	1.749	1.604	1.543	1.425	1.535	1.951	1.950	1.743	1.707	-	1.709
June	1.855	1.854	1.658	1.562	1.493	1.558	2.043	2.041	1.802	1.735	-	1.738
July	1.648	1.649	1.604	1.408	1.392	1.411	1.891	1.890	1.765	1.589	-	1.599
August	1.636	1.636	1.529	1.455	W	1.449	1.865	1.866	1.681	1.633	-	1.635
September	1.659	1.660	1.620	1.439	W	1.441	1.905	R1.905	1.770	1.620	-	1.629
October	1.691	1.692	1.648	1.493	1.456	1.493	1.933	1.933	1.796	1.674	-	1.681

See footnotes at end of table.

Table 8. U.S. refiner conventional motor gasoline prices by grade and sales type (cont.)

dollars per gallon excluding taxes

Year month	Premium						All grades					
	Sales to end users		Sales for resale				Sales to end users		Sales for resale			
	Through retail outlets	Average[a]	DTW	Rack	Bulk	Average	Through retail outlets	Average[a]	DTW	Rack	Bulk	Average
1994	0.863	0.855	0.778	0.638	0.555	0.682	0.736	0.729	0.683	0.565	0.507	0.589
1995	0.877	0.868	0.790	0.665	0.568	0.684	0.753	0.746	0.693	0.590	0.530	0.598
1996	0.960	0.951	0.869	0.755	0.645	0.767	0.834	0.827	0.778	0.682	0.610	0.685
1997	0.954	0.946	0.856	0.742	0.641	0.753	0.819	0.813	0.756	0.666	0.604	0.668
1998	0.783	0.776	0.684	W	0.474	0.576	0.652	0.647	0.589	0.491	0.442	0.494
1999	0.872	0.865	0.801	0.679	0.558	0.681	0.748	0.743	0.711	0.611	0.525	0.609
2000	1.211	1.201	1.120	1.002	0.897	1.005	1.076	1.071	1.023	0.926	0.849	0.925
2001	1.129	1.123	1.042	0.922	0.806	0.923	0.992	0.989	0.943	0.848	0.765	0.845
2002	1.064	1.058	0.978	0.889	0.788	0.886	0.924	0.921	0.867	0.806	0.729	0.798
2003	1.253	1.245	1.178	1.051	0.925	1.050	1.109	1.105	1.067	0.965	0.874	0.957
2004	1.544	1.534	1.466	1.347	1.248	1.348	1.391	1.387	1.348	1.257	1.174	1.247
2005	1.966	1.954	1.857	1.747	1.652	1.746	1.801	1.797	1.732	1.654	1.560	1.641
2006	2.274	2.265	2.215	2.070	1.981	2.071	2.084	2.082	2.077	1.940	1.869	1.933
2007	2.502	2.494	2.415	2.328	2.181	2.317	2.313	2.309	2.267	2.172	2.070	2.156
2008	2.928	2.921	2.851	2.726	2.650	2.726	2.736	2.733	2.716	2.573	2.518	2.568
2009	2.062	2.054	2.014	1.927	1.802	1.918	1.845	1.841	1.843	1.750	1.664	1.738
2010	2.489	2.478	2.443	2.329	2.172	2.318	2.264	2.259	2.270	2.155	2.069	2.143
2011	3.230	3.219	3.105	3.035	2.864	3.018	3.016	3.008	2.939	2.851	2.758	2.841
2012	3.316	3.299	3.194	3.116	3.094	3.116	3.098	3.083	3.024	2.887	2.843	2.886
2013	3.231	3.213	3.011	3.059	3.004	3.049	2.997	2.977	2.825	2.775	2.755	2.774
2014	3.063	3.043	2.901	2.885	2.794	2.875	2.800	2.778	2.736	2.589	2.535	2.587
2015												
January	1.908	1.901	1.648	1.615	1.480	1.604	1.587	1.586	1.475	1.335	1.302	1.335
February	2.062	2.054	W	1.854	1.702	1.842	1.765	1.763	1.709	1.591	1.538	1.588
March	2.214	2.207	2.157	1.986	1.880	1.983	1.885	1.884	1.984	1.692	1.700	1.700
April	2.244	2.239	2.156	2.071	1.895	2.055	1.916	1.917	1.979	1.764	1.730	1.766
May	2.459	2.454	2.473	2.308	2.128	2.298	2.131	2.131	2.285	1.985	1.928	1.987
June	2.577	2.570	W	2.432	2.349	2.428	2.254	2.253	2.311	2.064	2.008	2.065
July	2.508	2.504	W	2.375	2.415	2.382	2.160	2.161	2.319	1.965	1.991	1.975
August	2.407	2.401	2.302	2.203	2.016	2.189	2.058	2.057	2.109	1.759	1.707	1.763
September	2.166	2.158	W	1.968	1.713	1.946	1.786	1.785	1.812	1.559	1.449	1.553
October	2.124	2.114	W	1.885	1.648	1.860	1.760	1.759	1.637	1.519	1.413	1.513
November	1.977	1.970	W	1.725	1.471	1.697	1.602	1.601	1.591	1.372	1.326	1.373
December	1.866	1.860	1.726	1.630	1.410	1.609	1.471	1.472	1.532	1.288	1.254	1.290
2015	2.216	2.210	2.085	2.016	1.812	1.999	1.869	1.869	1.899	1.663	1.599	1.663
2016												
January	1.737	1.733	W	1.441	1.272	1.428	1.345	1.346	1.337	1.109	1.137	1.117
February	1.593	1.590	W	1.315	1.132	1.297	1.209	1.209	1.143	0.995	0.991	0.998
March	1.812	1.808	1.548	1.612	1.381	1.586	1.451	1.450	1.369	1.283	1.194	1.276
April	1.995	1.992	1.674	1.763	1.489	1.726	1.617	1.617	1.498	1.421	1.339	1.416
May	2.174	2.170	1.809	1.935	1.630	1.898	1.791	1.790	1.641	1.583	1.451	1.573
June	2.275	2.270	1.862	1.955	1.723	1.926	1.895	1.894	1.696	1.602	1.522	1.597
July	2.122	2.119	1.812	1.787	1.549	1.764	1.696	1.697	1.643	1.451	1.410	1.452
August	2.103	2.099	W	1.837	1.559	1.812	1.682	1.682	1.566	1.495	1.393	1.487
September	2.142	2.137	W	1.846	1.566	1.817	1.707	1.708	1.658	1.480	1.440	1.480
October	2.182	2.178	1.860	1.901	1.642	1.874	1.738	1.738	1.685	1.533	1.479	1.533

NA = Not available.

- = No data reported.

W = Withheld to avoid disclosure of individual company data.

R = Revised data.

[a] Includes sales through retail outlets as well as all direct sales to end users that were not made through company-operated retail outlets, e.g., sales to agricultural customers, commercial sales, and industrial sales.

Notes: - Beginning January 2007, oxygenated gasoline is included in conventional gasoline. - The 4th quarter of 1993 was a transitional period between the predecessor EIA-782 survey system and the revised EIA-782 survey system. The revised survey system contains additional product and sales categories, which may not be consistent with categories derived from the predecessor survey system. Beginning January 1994 all data are from the revised survey system and are consistent. Sales to end users - Values shown for the current month are preliminary. Values shown for previous months may be revised. Data through 2015 are final.

Sources: U.S. Energy Information Administration Form EIA-782A, "Refiners'/Gas Plant Operators' Monthly Petroleum Product Sales Report."

Table 9. U.S. refiner conventional motor gasoline volumes by grade and sales type
million gallons per day

Year month	Regular						Midgrade					
	Sales to end users		Sales for resale				Sales to end users		Sales for resale			
	Through retail outlets	Total[a]	DTW	Rack	Bulk	Total	Through retail outlets	Total[a]	DTW	Rack	Bulk	Total
1994	29.7	31.2	36.1	113.5	22.8	172.4	7.6	7.8	10.1	14.6	0.1	24.8
1995	24.0	25.3	19.4	105.1	26.0	150.5	6.0	6.3	5.1	13.6	0.1	18.7
1996	24.1	25.4	17.8	108.5	27.1	153.4	5.7	5.9	4.4	12.9	NA	17.3
1997	25.0	26.4	16.4	110.9	26.4	153.7	5.7	5.9	3.9	12.7	W	16.6
1998	25.4	26.6	13.7	112.0	28.8	154.5	6.0	6.1	3.4	12.5	W	15.8
1999	25.0	26.0	13.4	117.4	24.9	155.8	5.9	6.0	3.1	12.2	-	15.3
2000	26.0	27.1	12.8	125.7	23.9	162.4	4.9	5.0	2.3	10.8	-	13.1
2001	26.6	27.4	12.0	128.5	24.0	164.5	4.6	4.7	1.9	10.2	-	12.0
2002	27.2	28.0	11.3	127.9	31.0	170.2	4.7	4.8	1.6	10.4	-	11.9
2003	27.5	28.3	10.3	131.1	32.4	173.8	4.3	4.4	1.2	10.0	-	11.2
2004	26.5	27.3	9.7	136.7	36.1	182.5	3.5	3.6	0.9	9.8	-	10.8
2005	27.4	28.3	9.0	140.1	36.4	185.5	3.1	3.2	0.7	10.8	-	11.5
2006	28.9	29.8	7.3	143.7	37.4	188.4	2.9	2.9	0.5	9.3	-	9.7
2007	29.6	30.2	7.4	150.3	43.0	200.7	2.6	2.6	0.5	10.3	-	10.8
2008	28.9	29.8	7.1	144.5	39.5	191.1	2.1	2.2	0.4	9.9	-	10.3
2009	26.5	27.8	6.6	147.0	35.9	189.5	1.9	1.9	0.3	9.1	-	9.4
2010	24.9	26.2	5.9	147.6	37.1	190.7	1.7	1.7	0.2	8.7	-	8.9
2011	21.3	22.4	5.4	147.3	26.3	179.0	1.3	1.3	0.1	7.4	-	7.5
2012	14.4	15.7	5.0	149.0	21.7	175.8	0.9	0.9	0.1	7.2	-	7.4
2013	11.6	13.0	6.2	149.9	18.8	174.9	0.7	0.7	0.1	5.7	-	5.8
2014	11.1	12.5	4.3	154.9	16.8	176.0	0.6	0.6	0.1	2.1	-	2.3
2015												
January	13.4	13.6	3.7	150.4	17.2	171.2	0.8	0.8	0.1	1.8	-	1.9
February	13.5	13.8	W	156.1	W	179.1	0.8	0.8	0.1	1.8	-	1.9
March	13.6	13.8	3.9	156.9	17.6	178.4	0.8	0.8	0.1	1.9	-	2.0
April	14.0	14.3	3.9	162.8	17.5	184.2	0.8	0.8	0.1	2.0	-	2.1
May	14.3	14.6	3.9	162.0	16.4	182.3	0.9	0.9	0.1	2.1	-	2.2
June	14.3	14.6	W	165.5	W	184.6	0.9	0.9	0.1	2.1	-	2.2
July	14.6	14.9	W	167.9	W	186.1	0.9	0.9	0.1	2.1	-	2.2
August	14.2	14.5	4.0	163.8	15.5	183.3	0.9	0.9	0.1	2.0	-	2.1
September	14.1	14.4	W	161.3	W	184.5	0.9	0.9	0.1	1.9	-	2.0
October	14.2	14.5	W	162.3	W	180.4	0.9	0.9	0.1	1.8	-	1.9
November	13.9	14.1	W	159.6	W	180.2	0.8	0.8	0.1	1.8	-	1.9
December	14.0	14.2	4.1	159.7	18.9	182.7	0.8	0.8	0.1	1.7	-	1.8
2015	14.0	14.3	3.9	160.7	16.8	181.4	0.8	0.8	0.1	1.9	-	2.0
2016												
January	13.5	13.8	W	153.0	W	172.2	0.8	0.8	0.1	1.7	-	1.8
February	14.0	14.2	W	158.9	W	176.8	0.8	0.9	0.1	1.7	-	1.8
March	14.0	14.2	4.1	161.9	20.0	186.0	0.9	0.9	0.1	1.7	-	1.8
April	14.4	14.6	4.2	164.0	13.5	181.7	0.9	0.9	0.1	1.7	-	1.8
May	14.4	14.6	4.2	163.6	15.4	183.3	0.9	0.9	0.1	1.8	-	1.9
June	14.7	14.9	4.2	168.5	16.4	189.1	0.9	0.9	0.1	1.9	-	2.0
July	14.6	14.8	4.2	167.0	18.9	190.2	0.9	0.9	0.1	1.9	-	2.0
August	14.7	14.9	W	167.8	W	191.0	0.9	0.9	0.1	1.8	-	1.9
September	14.5	14.8	W	164.5	W	186.1	0.9	0.9	0.1	1.7	-	1.8
October	14.4	14.6	4.0	164.4	13.5	181.9	0.9	0.9	0.1	1.7	-	1.8

See footnotes at end of table.

Table 9. U.S. refiner conventional motor gasoline volumes by grade and sales type (cont.)

million gallons per day

Year month	Premium						All grades					
	Sales to end users		Sales for resale				Sales to end users		Sales for resale			
	Through retail outlets	Total[a]	DTW	Rack	Bulk	Total	Through retail outlets	Total[a]	DTW	Rack	Bulk	Total
1994	8.5	8.9	16.5	28.0	2.8	47.2	45.8	47.9	62.7	156.0	25.8	244.5
1995	6.2	6.4	7.7	25.1	2.9	35.6	36.2	38.0	32.1	143.8	28.9	204.8
1996	4.9	5.1	5.8	22.5	2.5	30.8	34.7	36.5	28.1	143.8	29.6	201.5
1997	4.8	5.0	5.1	21.9	2.5	29.5	35.4	37.2	25.4	145.6	28.9	199.8
1998	5.5	5.7	4.7	W	2.7	31.9	36.9	38.5	21.8	148.9	31.5	202.2
1999	5.0	5.2	4.3	24.1	3.8	32.2	35.9	37.2	20.8	153.7	28.7	203.3
2000	3.7	3.9	3.1	18.6	2.8	24.5	34.7	35.9	18.2	155.1	26.7	200.0
2001	3.7	3.8	2.8	18.7	2.7	24.1	35.0	36.0	16.7	157.4	26.7	200.7
2002	3.8	4.0	2.6	19.1	3.0	24.7	35.8	36.8	15.5	157.4	34.0	206.9
2003	3.4	3.5	2.1	17.5	2.4	21.9	35.1	36.3	13.6	158.6	34.8	207.0
2004	2.6	2.8	1.6	15.8	1.7	19.2	32.6	33.7	12.3	162.3	37.8	212.4
2005	2.3	2.4	1.4	14.4	1.9	17.7	32.8	33.8	11.0	165.4	38.2	214.6
2006	2.1	2.2	1.1	13.9	1.7	16.6	33.9	35.0	8.8	166.8	39.1	214.7
2007	2.1	2.2	1.1	14.4	2.0	17.4	34.3	35.0	9.0	175.0	44.9	228.9
2008	1.8	1.9	0.9	11.7	1.5	14.2	32.9	33.9	8.4	166.2	41.0	215.6
2009	1.7	1.8	0.9	12.9	1.8	15.6	30.0	31.5	7.8	169.0	37.7	214.5
2010	1.5	1.6	0.8	13.5	1.7	15.9	28.2	29.5	6.9	169.8	38.8	215.5
2011	1.2	1.3	0.7	12.6	1.8	15.1	23.8	25.1	6.2	167.3	28.1	201.6
2012	1.0	1.1	0.7	13.2	2.4	16.2	16.3	17.7	5.8	169.5	24.1	199.4
2013	0.8	0.9	0.8	14.0	2.4	17.2	13.1	14.5	7.1	169.6	21.2	197.9
2014	0.7	0.8	0.7	15.1	2.1	17.9	12.5	14.0	5.1	172.1	18.9	196.2
2015												
January	1.0	1.0	0.7	15.1	1.6	17.4	15.1	15.4	4.5	167.2	18.8	190.5
February	1.0	1.0	W	15.2	W	17.6	15.3	15.6	4.7	173.2	20.7	198.6
March	1.0	1.0	0.7	15.7	1.6	18.0	15.4	15.7	4.7	174.5	19.2	198.4
April	1.1	1.1	0.7	16.8	2.1	19.6	15.9	16.2	4.7	181.6	19.6	205.9
May	1.1	1.1	0.7	17.0	1.8	19.6	16.3	16.6	4.7	181.1	18.3	204.0
June	1.1	1.1	W	17.7	W	19.9	16.3	16.6	4.9	185.2	16.5	206.6
July	1.1	1.2	W	18.3	W	20.5	16.7	17.0	5.0	188.2	15.6	208.8
August	1.1	1.2	0.8	18.1	2.0	20.9	16.2	16.6	4.9	183.9	17.5	206.2
September	1.1	1.2	W	17.6	W	20.2	16.1	16.4	4.7	180.8	21.1	206.7
October	1.1	1.1	W	17.1	W	19.9	16.2	16.5	4.8	181.3	16.1	202.2
November	1.1	1.1	W	16.8	W	19.9	15.8	16.1	4.9	178.2	18.9	202.0
December	1.1	1.1	0.8	16.6	2.3	19.7	15.9	16.2	5.0	178.0	21.2	204.2
2015	1.1	1.1	0.7	16.8	1.8	19.4	15.9	16.2	4.8	179.4	18.6	202.8
2016												
January	1.1	1.1	W	16.0	W	18.6	15.4	15.7	4.8	170.7	17.0	192.5
February	1.1	1.1	W	16.9	W	19.6	15.9	16.2	4.9	177.4	15.8	198.2
March	1.1	1.2	0.8	17.0	2.0	19.9	16.0	16.2	5.0	180.6	22.0	207.7
April	1.2	1.2	0.8	17.6	2.6	21.0	16.4	16.7	5.1	183.3	16.1	204.5
May	1.2	1.2	0.9	18.0	2.2	21.1	16.4	16.7	5.2	183.5	17.7	206.3
June	1.2	1.2	0.9	18.6	2.3	21.8	16.8	17.0	5.2	189.0	18.7	212.9
July	1.2	1.3	0.9	20.9	2.4	24.2	16.8	17.0	5.1	189.8	21.4	216.3
August	1.2	1.2	W	18.9	W	21.4	16.8	17.1	5.2	188.5	20.6	214.4
September	1.2	1.2	W	17.8	W	20.8	16.7	16.9	5.1	184.0	19.6	208.6
October	1.1	1.1	0.8	17.3	2.0	20.0	16.3	16.6	4.9	183.4	15.4	203.7

NA = Not available.

- = No data reported.

W = Withheld to avoid disclosure of individual company data.

R = Revised data.

[a] Includes sales through retail outlets as well as all direct sales to end users that were not made through company-operated retail outlets, e.g., sales to agricultural customers, commercial sales, and industrial sales.

Notes: - Beginning January 2007, oxygenated gasoline is included in conventional gasoline. Sales to end users Year month Sales for resale - Values shown for the current month are preliminary. Values shown for previous months are revised. Data through 2015 are final. Totals may not equal the sum of the components due to rounding. - The 4th quarter of 1993 was a transitional period between the predecessor EIA-782 survey system and the revised EIA-782 survey system. The revised survey system contains additional product and sales categories, which may not be consistent with categories derived from the predecessor survey system. Beginning January 1994 all data are from the revised survey system and are consistent.

Sources: U.S. Energy Information Administration Form EIA-782A, "Refiners'/Gas Plant Operators' Monthly Petroleum Product Sales Report."

Table 10. U.S. refiner reformulated motor gasoline prices by grade and sales type
dollars per gallon excluding taxes

Year month	Regular						Midgrade					
	Sales to end users		Sales for resale				Sales to end users		Sales for resale			
	Through retail outlets	Average[a]	DTW	Rack	Bulk	Average	Through retail outlets	Average[a]	DTW	Rack	Bulk	Average
1994	0.764	0.758	0.720	0.569	0.543	0.638	0.879	0.873	0.770	0.628	W	0.728
1995	0.749	0.744	0.707	0.605	0.573	0.650	0.836	0.833	0.753	0.651	-	0.723
1996	0.834	0.830	0.788	0.698	0.677	0.738	0.924	0.921	0.837	0.741	W	0.809
1997	0.830	0.828	0.787	0.682	0.668	0.731	0.928	0.925	0.840	0.725	W	0.807
1998	0.668	0.665	0.616	0.509	0.484	0.557	0.769	0.767	0.673	0.553	W	0.638
1999	0.804	0.800	0.752	0.642	0.601	0.686	0.895	0.892	0.807	0.676	NA	0.767
2000	1.126	1.123	1.058	0.978	0.953	1.012	1.219	1.217	1.114	1.014	-	1.085
2001	1.059	1.056	1.001	0.893	0.856	0.938	1.166	1.163	1.061	0.942	-	1.027
2002	0.946	0.944	0.906	0.834	0.779	0.861	1.052	1.050	0.988	0.875	-	0.958
2003	1.196	1.192	1.168	1.006	0.962	1.069	1.293	1.290	1.224	1.047	-	1.165
2004	1.472	1.470	1.447	1.299	1.248	1.353	1.572	1.570	1.494	1.340	-	1.436
2005	1.850	1.848	1.787	1.682	1.619	1.711	1.945	1.944	1.834	1.726	-	1.789
2006	2.166	2.164	2.097	2.002	1.885	2.030	2.275	2.274	2.170	2.078	-	2.129
2007	2.362	2.360	2.288	2.186	2.175	2.221	2.490	2.489	2.368	2.256	-	2.316
2008	2.812	2.810	2.703	2.553	2.642	2.607	2.934	2.934	2.788	2.652	-	2.721
2009	1.927	1.925	1.878	1.770	1.782	1.806	2.066	2.066	1.981	1.855	-	1.914
2010	2.342	2.339	2.265	2.159	2.141	2.188	2.485	2.485	2.362	2.229	-	2.280
2011	3.089	3.085	2.973	2.874	2.831	2.895	3.233	3.233	3.062	2.954	-	2.990
2012	3.219	3.212	3.111	2.956	2.947	2.988	3.372	3.372	3.213	3.047	-	3.098
2013	3.110	3.101	2.948	2.830	2.869	2.856	3.268	3.268	3.066	2.939	-	2.979
2014	2.946	2.938	2.784	2.614	2.663	2.647	3.111	3.111	2.920	2.746	-	2.788
2015												
January	1.748	1.747	1.577	1.348	1.431	1.391	1.958	1.958	1.684	1.461	-	1.515
February	1.955	1.954	1.913	1.650	W	1.697	2.143	2.142	2.081	1.784	-	1.857
March	2.268	2.266	2.266	1.781	1.792	1.869	2.503	2.503	2.377	1.932	-	2.040
April	2.233	2.231	2.224	1.873	1.946	1.938	2.450	2.450	2.386	2.013	-	2.101
May	2.579	2.578	2.703	2.122	2.223	2.227	2.826	2.826	2.865	2.263	-	2.396
June	2.515	2.513	2.502	2.121	W	2.187	2.736	2.736	2.650	2.260	-	2.346
July	2.574	2.572	2.751	2.108	W	2.221	2.862	2.862	2.956	2.279	-	2.418
August	2.414	2.412	2.440	1.826	1.841	1.934	2.701	2.701	2.550	1.990	-	2.106
September	2.059	2.058	2.086	1.576	W	1.666	2.358	2.358	2.211	1.745	-	1.847
October	1.920	1.919	1.931	1.522	W	1.593	2.181	2.181	2.101	1.694	-	1.786
November	1.815	1.814	1.817	1.406	W	1.480	2.057	2.057	1.971	1.572	-	1.663
December	1.744	1.743	1.801	1.358	1.418	1.437	2.011	2.011	2.000	1.544	-	1.652
2015	2.159	2.158	2.174	1.728	1.775	1.807	2.404	2.404	2.321	1.892	-	1.989
2016												
January	1.688	1.687	1.752	1.170	W	1.274	1.981	1.981	1.893	1.341	-	1.468
February	1.450	1.449	1.422	1.019	W	1.090	1.721	1.721	1.564	1.164	-	1.260
March	1.646	1.644	1.728	1.339	1.347	1.407	1.881	1.881	1.918	1.519	-	1.615
April	1.832	1.831	1.845	1.485	1.475	1.548	2.064	2.064	1.985	1.635	-	1.719
May	1.928	1.927	1.864	1.598	1.581	1.642	2.135	2.135	2.011	1.736	-	1.799
June	1.998	1.997	1.929	1.643	1.591	1.688	2.195	2.195	2.090	1.781	-	1.848
July	1.905	1.904	1.834	1.453	1.503	1.519	2.152	2.152	1.955	1.600	-	1.678
August	1.797	1.796	1.677	1.466	W	1.502	2.018	2.018	1.830	1.590	-	1.641
September	1.839	1.838	1.800	1.475	W	1.531	2.076	2.076	1.957	1.611	-	1.687
October	1.869	1.868	1.834	1.536	1.587	1.588	2.112	2.112	2.002	1.682	-	1.754

See footnotes at end of table.

Table 10. U.S. refiner reformulated motor gasoline prices by grade and sales type (cont.)

dollars per gallon excluding taxes

Year month	Premium						All grades					
	Sales to end users		Sales for resale				Sales to end users		Sales for resale			
	Through retail outlets	Average[a]	DTW	Rack	Bulk	Average	Through retail outlets	Average[a]	DTW	Rack	Bulk	Average
1994	0.966	0.958	0.861	0.677	0.558	0.777	0.831	0.824	0.771	0.599	0.547	0.687
1995	0.929	0.924	0.841	0.704	0.616	0.785	0.808	0.803	0.756	0.632	0.582	0.696
1996	1.002	0.998	0.910	0.791	0.709	0.859	0.882	0.878	0.828	0.720	0.682	0.774
1997	1.005	1.003	0.910	0.775	0.686	0.853	0.876	0.874	0.825	0.703	0.671	0.767
1998	0.847	0.845	0.741	W	0.516	0.680	0.717	0.714	0.657	0.529	0.489	0.593
1999	0.966	0.963	0.870	0.717	0.639	0.798	0.845	0.841	0.788	0.658	0.608	0.718
2000	1.297	1.291	1.189	1.064	0.972	1.125	1.164	1.160	1.092	0.993	0.957	1.039
2001	1.239	1.234	1.133	0.983	0.890	1.065	1.100	1.096	1.034	0.909	0.859	0.966
2002	1.124	1.119	1.046	0.930	0.832	0.991	0.987	0.985	0.944	0.851	0.785	0.891
2003	1.366	1.362	1.292	1.099	1.028	1.201	1.233	1.229	1.197	1.021	0.969	1.097
2004	1.655	1.652	1.574	1.399	1.348	1.489	1.510	1.507	1.474	1.313	1.257	1.378
2005	2.031	2.029	1.912	1.791	1.766	1.847	1.883	1.881	1.812	1.697	1.635	1.733
2006	2.369	2.367	2.239	2.149	2.004	2.183	2.202	2.200	2.125	2.020	1.906	2.055
2007	2.601	2.599	2.468	2.367	2.346	2.415	2.404	2.402	2.322	2.208	2.192	2.250
2008	3.003	3.001	2.845	2.700	2.826	2.772	2.845	2.843	2.728	2.569	2.659	2.629
2009	2.177	2.174	2.067	1.968	1.899	2.011	1.971	1.969	1.913	1.793	1.791	1.834
2010	2.587	2.584	2.446	2.343	2.247	2.380	2.386	2.383	2.299	2.182	2.150	2.215
2011	3.334	3.331	3.145	3.067	2.940	3.090	3.132	3.128	3.003	2.898	2.837	2.921
2012	3.478	3.473	3.288	3.201	3.175	3.225	3.265	3.259	3.143	2.986	2.961	3.020
2013	3.371	3.365	3.132	3.103	3.071	3.110	3.160	3.152	2.982	2.866	2.882	2.892
2014	3.206	3.202	2.949	2.867	2.642	2.886	3.005	2.996	2.818	2.648	2.661	2.682
2015												
January	2.080	2.080	1.758	1.615	1.486	1.652	1.825	1.824	1.617	1.385	1.435	1.431
February	2.254	2.254	W	1.922	W	1.976	2.023	2.022	1.957	1.688	1.662	1.740
March	2.616	2.615	2.429	2.076	2.124	2.173	2.348	2.346	2.301	1.822	1.817	1.916
April	2.567	2.566	2.420	2.162	2.228	2.231	2.309	2.308	2.267	1.915	1.967	1.984
May	2.954	2.953	2.877	2.429	2.592	2.545	2.664	2.662	2.740	2.166	2.248	2.276
June	2.825	2.825	W	2.450	W	2.513	2.587	2.585	2.544	2.168	2.150	2.237
July	2.947	2.946	W	2.505	W	2.622	2.661	2.660	2.795	2.165	2.208	2.283
August	2.792	2.792	2.612	2.232	2.200	2.329	2.503	2.501	2.477	1.886	1.866	1.996
September	2.472	2.472	W	1.972	W	2.052	2.157	2.155	2.128	1.634	1.645	1.728
October	2.302	2.302	W	1.895	W	1.962	2.008	2.007	1.979	1.577	1.566	1.651
November	2.209	2.209	W	1.765	W	1.836	1.907	1.905	1.864	1.459	1.524	1.537
December	2.162	2.161	2.029	1.725	1.868	1.809	1.841	1.840	1.854	1.412	1.456	1.497
2015	2.516	2.516	2.357	2.066	2.145	2.144	2.242	2.240	2.214	1.777	1.799	1.860
2016												
January	2.126	2.125	W	1.524	W	1.638	1.792	1.790	1.796	1.221	1.307	1.331
February	1.878	1.878	W	1.333	W	1.408	1.554	1.553	1.471	1.066	1.074	1.143
March	2.029	2.028	1.960	1.668	1.712	1.749	1.737	1.736	1.783	1.388	1.377	1.463
April	2.215	2.215	2.064	1.804	1.779	1.873	1.921	1.921	1.895	1.533	1.514	1.601
May	2.293	2.293	2.091	1.915	1.855	1.960	2.012	2.011	1.917	1.645	1.602	1.694
June	2.351	2.351	2.160	1.957	1.992	2.011	2.079	2.078	1.983	1.690	1.619	1.740
July	2.304	2.304	2.045	1.788	1.824	1.856	1.999	1.998	1.884	1.504	1.524	1.574
August	2.172	2.172	W	1.772	W	1.807	1.885	1.885	1.732	1.513	1.479	1.553
September	2.228	2.228	W	1.797	W	1.860	1.931	1.931	1.855	1.523	1.537	1.585
October	2.275	2.275	2.070	1.857	1.892	1.914	1.963	1.962	1.890	1.584	1.612	1.641

NA = Not available.

- = No data reported.

W = Withheld to avoid disclosure of individual company data.

[a] Includes sales through retail outlets as well as all direct sales to end users that were not made through company-operated retail outlets, e.g., sales to agricultural customers, commercial sales, and industrial sales.

Notes: - Values shown for the current month are preliminary. Values shown for previous months may be revised. Data through 2015 are final.

Sources: U.S. Energy Information Administration Form EIA-782A, "Refiners'/Gas Plant Operators' Monthly Petroleum Product Sales Report."

Table 11. U.S. refiner reformulated motor gasoline volumes by grade and sales type
million gallons per day

Year month	Regular						Midgrade					
	Sales to end users		Sales for resale				Sales to end users		Sales for resale			
	Through retail outlets	Total[a]	DTW	Rack	Bulk	Total	Through retail outlets	Total[a]	DTW	Rack	Bulk	Total
1994	0.6	0.6	2.1	1.6	0.6	4.3	0.2	0.2	0.7	0.3	W	1.0
1995	7.8	8.1	20.7	W	W	43.3	3.0	3.1	7.4	3.1	-	10.5
1996	10.7	11.1	26.1	20.5	8.0	54.6	3.3	3.4	7.9	3.3	W	11.3
1997	13.4	13.8	28.0	21.7	7.6	57.3	3.6	3.7	7.9	3.1	W	11.0
1998	14.3	14.5	28.6	23.0	8.3	59.9	3.7	3.8	7.4	3.1	W	10.5
1999	14.5	14.8	29.8	26.1	9.6	65.5	3.6	3.7	7.0	3.1	NA	10.2
2000	15.5	15.9	32.1	29.1	8.5	69.6	3.3	3.4	6.2	2.6	-	8.8
2001	16.3	16.7	32.7	30.0	9.0	71.7	3.3	3.3	5.7	2.2	-	7.9
2002	16.9	17.2	33.1	30.4	8.2	71.7	3.3	3.3	5.6	2.1	-	7.6
2003	17.7	18.0	30.9	35.1	7.6	73.6	3.1	3.1	4.1	2.0	-	6.1
2004	16.2	16.5	29.5	39.7	6.1	75.3	2.6	2.6	3.3	2.0	-	5.2
2005	17.1	17.4	27.5	43.5	9.5	80.4	2.6	2.6	2.5	1.8	-	4.2
2006	17.7	18.0	26.8	45.7	3.4	75.9	2.5	2.5	1.9	1.5	-	3.4
2007	17.4	17.6	26.7	45.4	3.8	75.9	2.4	2.4	1.6	1.3	-	2.9
2008	16.6	16.9	25.4	48.1	4.2	77.7	2.0	2.0	1.1	1.1	-	2.2
2009	14.0	14.3	25.8	49.8	3.4	79.0	1.7	1.7	1.0	1.1	-	2.1
2010	11.7	11.9	23.1	54.5	4.2	81.9	1.3	1.3	0.7	1.2	-	1.9
2011	10.8	11.1	19.5	57.6	4.2	81.3	1.2	1.2	0.5	1.1	-	1.6
2012	9.2	9.5	17.4	60.3	4.0	81.7	1.0	1.0	0.5	1.0	-	1.5
2013	7.6	7.9	16.5	59.3	3.5	79.3	0.9	0.9	0.4	1.0	-	1.4
2014	5.5	5.7	14.6	62.0	2.1	78.8	0.7	0.7	0.3	0.9	-	1.2
2015												
January	6.5	6.5	13.5	60.6	2.2	76.3	0.9	0.9	0.2	0.8	-	1.0
February	6.7	6.7	W	62.3	W	78.6	0.9	0.9	0.3	0.8	-	1.1
March	6.7	6.7	14.4	62.2	2.8	79.5	0.9	0.9	0.3	0.8	-	1.1
April	6.7	6.8	14.3	63.3	3.2	80.8	0.9	0.9	0.3	0.8	-	1.1
May	6.9	6.9	14.1	63.6	2.8	80.6	0.9	0.9	0.2	0.9	-	1.1
June	7.0	7.0	W	65.5	W	82.6	0.9	0.9	0.2	0.9	-	1.1
July	6.9	6.9	W	64.3	W	80.9	0.9	0.9	0.2	0.9	-	1.1
August	7.0	7.0	14.3	64.7	3.0	81.9	0.9	0.9	0.2	0.9	-	1.2
September	6.9	6.9	W	63.8	W	81.0	0.9	0.9	0.2	0.8	-	1.1
October	6.9	7.0	W	64.8	W	81.6	0.9	0.9	0.2	0.8	-	1.0
November	6.6	6.6	W	63.2	W	80.4	0.9	0.9	0.2	0.8	-	1.0
December	6.6	6.6	13.8	63.2	3.0	79.9	0.9	0.9	0.2	0.8	-	1.0
2015	6.8	6.8	14.1	63.5	2.8	80.3	0.9	0.9	0.2	0.8	-	1.1
2016												
January	6.4	6.4	W	61.4	W	77.6	0.9	0.9	0.2	0.7	-	1.0
February	6.5	6.5	W	63.5	W	80.2	0.9	0.9	0.2	0.7	-	1.0
March	6.5	6.5	14.0	62.9	3.1	80.1	0.9	0.9	0.2	0.7	-	1.0
April	6.7	6.7	14.2	64.7	2.5	81.4	0.9	0.9	0.2	0.8	-	1.0
May	6.7	6.8	14.1	64.9	3.7	82.7	1.0	1.0	0.2	0.8	-	1.0
June	7.0	7.0	14.0	67.0	4.0	85.0	1.0	1.0	0.2	0.8	-	1.1
July	6.8	6.8	13.8	65.2	3.7	82.8	1.0	1.0	0.2	0.8	-	1.1
August	6.8	6.8	W	66.1	W	83.2	1.0	1.0	0.2	0.8	-	1.1
September	6.9	6.9	W	65.4	W	82.5	1.0	1.0	0.2	0.8	-	1.0
October	6.8	6.8	13.7	65.2	2.7	81.7	1.0	1.0	0.2	0.7	-	0.9

See footnotes at end of table.

Table 11. U.S. refiner reformulated motor gasoline volumes by grade and sales type (cont.)

million gallons per day

Year month	Premium						All grades					
	Sales to end users		Sales for resale				Sales to end users		Sales for resale			
	Through retail outlets	Total[a]	DTW	Rack	Bulk	Total	Through retail outlets	Total[a]	DTW	Rack	Bulk	Total
1994	0.2	0.2	1.2	0.5	0.2	1.9	1.0	1.0	4.0	2.4	0.8	7.2
1995	3.1	3.2	12.0	W	W	18.9	14.0	14.4	40.1	25.9	6.6	72.6
1996	3.1	3.2	11.7	5.3	1.5	18.6	17.0	17.6	45.7	29.2	9.6	84.5
1997	3.4	3.5	11.5	5.3	1.5	18.2	20.3	21.0	47.4	30.1	9.1	86.6
1998	3.8	3.9	12.2	W	1.6	19.8	21.8	22.2	48.2	32.0	9.9	90.1
1999	3.4	3.5	11.4	6.3	1.9	19.6	21.5	22.0	48.2	35.6	11.5	95.2
2000	3.0	3.1	9.6	5.4	1.9	16.8	21.9	22.4	47.9	37.0	10.4	95.2
2001	3.2	3.2	9.2	5.4	1.1	15.7	22.7	23.3	47.7	37.6	10.0	95.3
2002	3.4	3.5	9.5	5.6	1.1	16.3	23.6	24.1	48.2	38.0	9.3	95.6
2003	3.5	3.6	8.5	5.9	1.0	15.3	24.2	24.7	43.5	43.0	8.6	95.1
2004	3.1	3.1	7.4	6.0	0.6	14.1	21.9	22.3	40.2	47.7	6.7	94.6
2005	2.8	2.8	6.5	6.0	1.2	13.6	22.6	22.9	36.4	51.2	10.6	98.3
2006	2.7	2.7	5.9	5.9	0.7	12.5	22.9	23.2	34.6	53.1	4.1	91.8
2007	2.6	2.7	5.8	5.9	0.4	12.1	22.4	22.7	34.0	52.6	4.3	90.9
2008	2.4	2.4	5.0	5.4	0.4	10.8	21.0	21.3	31.5	54.6	4.6	90.8
2009	2.3	2.3	5.3	6.1	0.3	11.8	17.9	18.3	32.1	57.1	3.7	92.9
2010	1.9	1.9	4.9	7.4	0.4	12.7	14.9	15.2	28.8	63.1	4.7	96.5
2011	1.7	1.7	3.9	7.7	0.2	11.8	13.7	13.9	23.9	66.4	4.4	94.7
2012	1.5	1.5	3.5	8.4	0.3	12.1	11.7	12.0	21.4	69.7	4.3	95.4
2013	1.4	1.4	3.5	8.7	0.2	12.4	9.9	10.2	20.5	69.0	3.7	93.1
2014	1.2	1.2	3.5	9.4	0.2	13.0	7.5	7.7	18.4	72.3	2.3	93.0
2015												
January	1.5	1.5	3.7	9.7	0.2	13.5	8.8	8.8	17.5	71.0	2.4	90.8
February	1.5	1.5	W	9.8	W	13.7	9.0	9.1	18.2	73.0	2.3	93.4
March	1.5	1.5	3.7	9.8	0.2	13.8	9.1	9.1	18.4	72.9	3.1	94.3
April	1.5	1.5	3.8	10.4	0.3	14.4	9.1	9.2	18.4	74.5	3.4	96.4
May	1.5	1.5	3.6	10.5	0.2	14.3	9.3	9.3	18.0	74.9	3.1	96.0
June	1.5	1.5	W	10.6	W	14.6	9.4	9.5	18.3	76.9	3.1	98.3
July	1.5	1.5	W	10.5	W	14.2	9.3	9.3	17.8	75.6	2.9	96.3
August	1.5	1.5	3.8	10.7	0.2	14.8	9.4	9.4	18.3	76.3	3.2	97.9
September	1.5	1.5	W	10.8	W	14.9	9.3	9.4	18.2	75.5	3.3	97.0
October	1.5	1.5	W	10.9	W	15.0	9.4	9.4	18.2	76.5	2.9	97.6
November	1.5	1.5	W	10.7	W	14.8	9.0	9.1	17.8	74.7	3.7	96.2
December	1.5	1.5	4.0	10.6	0.3	14.8	9.0	9.1	18.0	74.6	3.2	95.8
2015	1.5	1.5	3.8	10.4	0.2	14.4	9.2	9.2	18.1	74.7	3.0	95.8
2016												
January	1.5	1.5	W	10.1	W	14.2	8.7	8.7	17.3	72.2	3.2	92.8
February	1.6	1.6	W	10.9	W	15.6	9.0	9.0	18.4	75.1	3.3	96.8
March	1.6	1.6	4.1	10.7	0.3	15.1	9.0	9.0	18.4	74.3	3.4	96.2
April	1.6	1.6	4.1	11.0	0.4	15.5	9.2	9.2	18.6	76.5	2.9	98.0
May	1.6	1.6	4.2	11.2	0.3	15.7	9.3	9.3	18.5	77.0	4.0	99.5
June	1.6	1.6	4.1	11.5	0.3	15.9	9.6	9.7	18.4	79.3	4.3	102.0
July	1.6	1.6	4.1	11.4	0.3	15.8	9.3	9.4	18.2	77.5	4.0	99.7
August	1.6	1.6	W	11.6	W	16.2	9.4	9.5	18.7	78.6	3.1	100.4
September	1.7	1.7	W	11.3	W	15.7	9.5	9.5	18.3	77.5	3.3	99.2
October	1.6	1.6	4.1	11.1	0.2	15.5	9.3	9.3	18.0	77.1	3.0	98.1

NA = Not available.

- = No data reported.

W = Withheld to avoid disclosure of individual company data.

[a] Includes sales through retail outlets as well as all direct sales to end users that were not made through company-operated retail outlets, e.g., sales to agricultural customers, commercial sales, and industrial sales.

Notes: - Values shown for the current month are preliminary. Values shown for previous months are revised. Data through 2015 are final. Totals may not equal the sum of the components due to rounding.

Sources: U.S. Energy Information Administration Form EIA-782A, "Refiners'/Gas Plant Operators' Monthly Petroleum Product Sales Report."

Table 16. U.S. refiner residual fuel oil prices
dollars per gallon excluding taxes

Year month	Sulfur less than or equal to 1%		Sulfur greater than 1%		Average	
	Sales to end users	Sales for resale	Sales to end users	Sales for resale	Sales to end users	Sales for resale
1985	0.644	0.610	0.582	0.560	0.610	0.577
1986	0.372	0.328	0.317	0.289	0.343	0.305
1987	0.447	0.412	0.396	0.362	0.423	0.385
1988	0.372	0.333	0.300	0.271	0.334	0.300
1989	0.436	0.407	0.344	0.331	0.385	0.360
1990	0.505	0.472	0.400	0.372	0.444	0.413
1991	0.402	0.364	0.306	0.292	0.340	0.314
1992	0.389	0.351	0.312	0.286	0.336	0.308
1993	0.397	0.337	0.303	0.256	0.337	0.293
1994	0.401	0.345	0.330	0.287	0.352	0.317
1995	0.436	0.383	0.377	0.338	0.392	0.363
1996	0.526	0.456	0.433	0.389	0.455	0.420
1997	0.488	0.415	0.403	0.366	0.423	0.387
1998	0.354	0.299	0.287	0.269	0.305	0.280
1999	0.405	0.382	0.362	0.329	0.374	0.354
2000	0.708	0.627	0.566	0.512	0.602	0.566
2001	0.642	0.523	0.492	0.428	0.531	0.476
2002	0.640	0.546	0.544	0.508	0.569	0.530
2003	0.804	0.728	0.651	0.588	0.698	0.661
2004	0.835	0.764	0.692	0.601	0.739	0.681
2005	1.168	1.115	0.974	0.842	1.048	0.971
2006	1.342	1.202	1.173	1.085	1.218	1.136
2007	1.436	1.406	1.350	1.314	1.374	1.350
2008	2.144	1.918	1.889	1.843	1.964	1.866
2009	1.413	1.337	1.306	1.344	1.341	1.342
2010	1.920	1.756	1.619	1.679	1.713	1.697
2011	2.736	2.389	2.257	2.316	2.401	2.336
2012	3.025	2.548	2.433	2.429	2.592	2.457
2013	2.883	2.363	2.353	2.249	2.482	2.278
2014	2.694	2.153	2.221	1.996	2.325	2.044
2015						
January	NA	0.936	1.192	1.038	1.264	1.023
February	NA	1.150	1.342	1.124	1.376	1.126
March	NA	1.093	1.436	1.131	1.465	1.126
April	1.704	1.124	1.465	1.114	1.516	1.114
May	NA	1.198	1.443	1.242	1.543	1.234
June	W	1.175	1.474	1.239	1.549	1.233
July	W	1.080	1.245	1.130	1.363	1.122
August	W	0.797	1.150	0.928	1.207	0.918
September	W	0.819	1.063	0.856	1.107	0.852
October	NA	0.812	1.041	0.840	1.094	0.836
November	W	0.766	1.001	0.791	1.043	0.787
December	W	0.552	0.861	0.639	0.919	0.633
2015	1.529	0.971	1.227	0.999	1.285	0.996
2016						
January	W	0.477	0.641	0.502	0.710	0.499
February	NA	0.475	0.606	0.508	0.632	0.504
March	NA	0.582	0.672	0.555	0.693	0.558
April	W	0.633	0.734	0.614	0.782	0.616
May	W	0.729	0.868	0.722	0.922	0.723
June	W	0.850	0.911	0.823	0.983	0.825
July	W	0.876	0.948	0.834	1.030	0.835
August	W	0.842	0.924	0.811	0.990	0.815
September	W	R0.846	R1.059	R0.855	R1.076	R0.854
October	W	0.961	1.091	0.935	1.115	0.938

NA = Not available.

R = Revised data.

Notes: - Values shown for the current month are preliminary. Values shown for previous months may be revised. Data through 2015 are final.

Sources: U.S. Energy Information Administration Form EIA-782A, "Refiners'/Gas Plant Operators' Monthly Petroleum Product Sales Report."

Table 17. U.S. refiner residual fuel oil volumes
million gallons per day

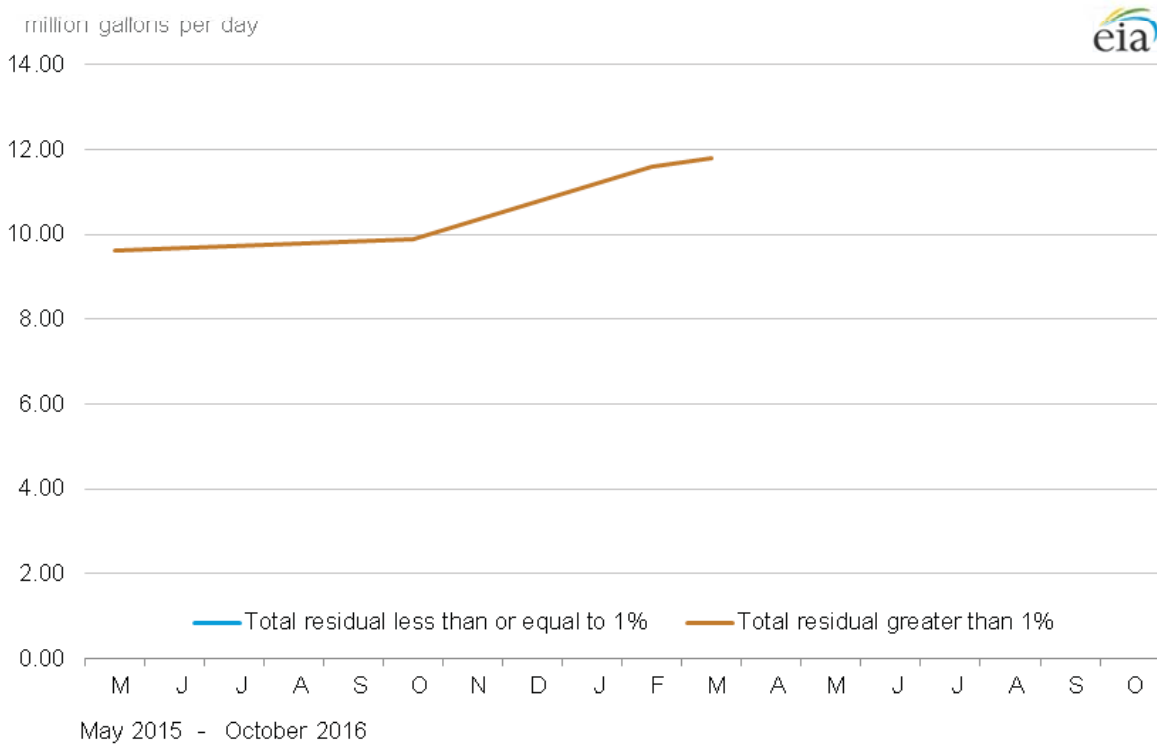
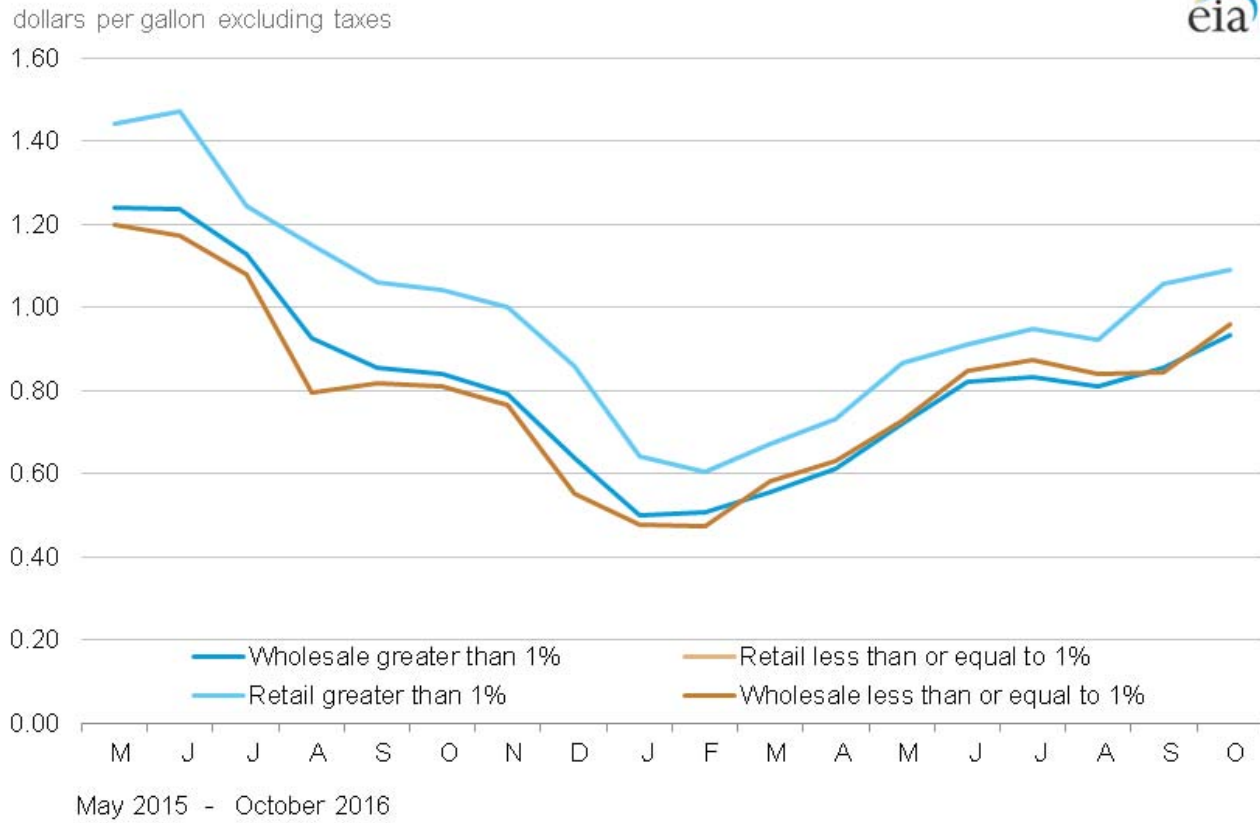
Year month	Sulfur less than or equal to 1%		Sulfur greater than 1%		Total	
	Sales to end users	Sales for resale	Sales to end users	Sales for resale	Sales to end users	Sales for resale
1985	11.4	7.0	13.8	12.9	25.2	19.9
1986	15.2	7.9	16.4	10.7	31.6	18.6
1987	15.1	7.8	13.9	9.1	29.0	16.9
1988	14.2	8.7	15.9	10.3	30.2	18.9
1989	13.4	7.9	17.0	13.1	30.4	21.0
1990	11.1	7.4	14.9	10.5	25.9	17.9
1991	8.6	5.6	15.5	12.2	24.0	17.8
1992	7.1	5.2	15.3	10.0	22.4	15.2
1993	6.2	5.7	11.1	6.9	17.2	12.6
1994	4.2	6.6	9.3	6.2	13.5	12.8
1995	2.9	7.7	8.7	5.9	11.6	13.6
1996	3.1	6.3	9.8	7.4	12.9	13.8
1997	3.2	4.8	10.3	6.7	13.4	11.5
1998	3.9	5.7	10.5	9.6	14.4	15.4
1999	3.9	5.3	10.0	6.2	13.9	11.5
2000	3.3	4.9	9.8	5.6	13.1	10.5
2001	3.8	5.2	11.0	5.1	14.8	10.3
2002	2.7	5.1	7.8	3.7	10.4	8.8
2003	3.3	3.5	7.4	3.2	10.7	6.7
2004	3.4	2.9	6.8	3.0	10.2	5.9
2005	4.0	2.2	6.4	2.5	10.4	4.7
2006	2.8	2.8	7.6	3.6	10.4	6.5
2007	3.1	3.2	7.8	5.0	10.9	8.2
2008	2.5	2.9	5.9	6.6	8.4	9.5
2009	2.8	2.9	5.7	6.9	8.5	9.8
2010	2.4	2.6	5.2	8.1	7.6	10.7
2011	1.9	3.4	4.5	8.8	6.4	12.2
2012	1.5	2.1	4.0	6.8	5.5	8.8
2013	1.3	2.3	3.9	6.7	5.2	9.0
2014	1.0	2.4	3.6	5.6	4.6	8.0
2015						
January	NA	1.0	3.1	5.5	3.6	6.5
February	NA	0.7	3.1	7.0	3.7	7.7
March	NA	1.0	3.2	6.8	3.5	7.8
April	1.0	0.6	3.6	7.0	4.6	7.6
May	NA	1.4	3.0	6.6	3.9	8.0
June	W	0.9	W	8.0	4.6	8.9
July	W	1.2	W	7.1	3.6	8.3
August	W	0.7	W	8.4	4.3	9.1
September	W	0.9	W	7.2	4.5	8.1
October	NA	1.2	2.9	7.0	3.7	8.2
November	W	1.2	W	6.8	4.4	8.0
December	W	0.6	W	8.3	4.0	8.9
2015	0.8	0.9	3.3	7.1	4.0	8.1
2016						
January	W	1.0	W	8.3	4.1	9.3
February	NA	1.2	3.4	8.2	3.9	9.3
March	NA	0.7	3.3	8.5	4.1	9.2
April	W	1.2	W	7.8	4.2	9.0
May	W	1.3	W	8.6	3.9	9.9
June	W	0.6	W	8.3	3.8	8.9
July	W	0.3	W	7.4	4.3	7.6
August	W	0.9	W	7.2	4.4	8.1
September	W	0.5	W	R7.4	R4.7	R7.9
October	W	1.0	W	6.1	4.4	7.1

NA = Not available.

R = Revised data.

Notes: - Values shown for the current month are preliminary. Values shown for previous months are revised. Data through 2015 are final. Totals may not equal the sum of the components due to rounding.
Sources: U.S. Energy Information Administration Form EIA-782A, "Refiners'/Gas Plant Operators' Monthly Petroleum Product Sales Report."

Figure 7. U.S. Refiner residual fuel oil prices and volumes



Source: U.S. Energy Information Administration, Form EIA-782A, "Refiners'/Gas Plant Operators' Monthly Petroleum Product Sales Report."