

Prices

The Exvessel Price table is an index of changes in the relative dockside value of fish and shellfish sold by fishing vessels. The table indexes the average annual exvessel value (price per pound) received for each species or group to the average price per pound received for the same species or group in the base year 1982.

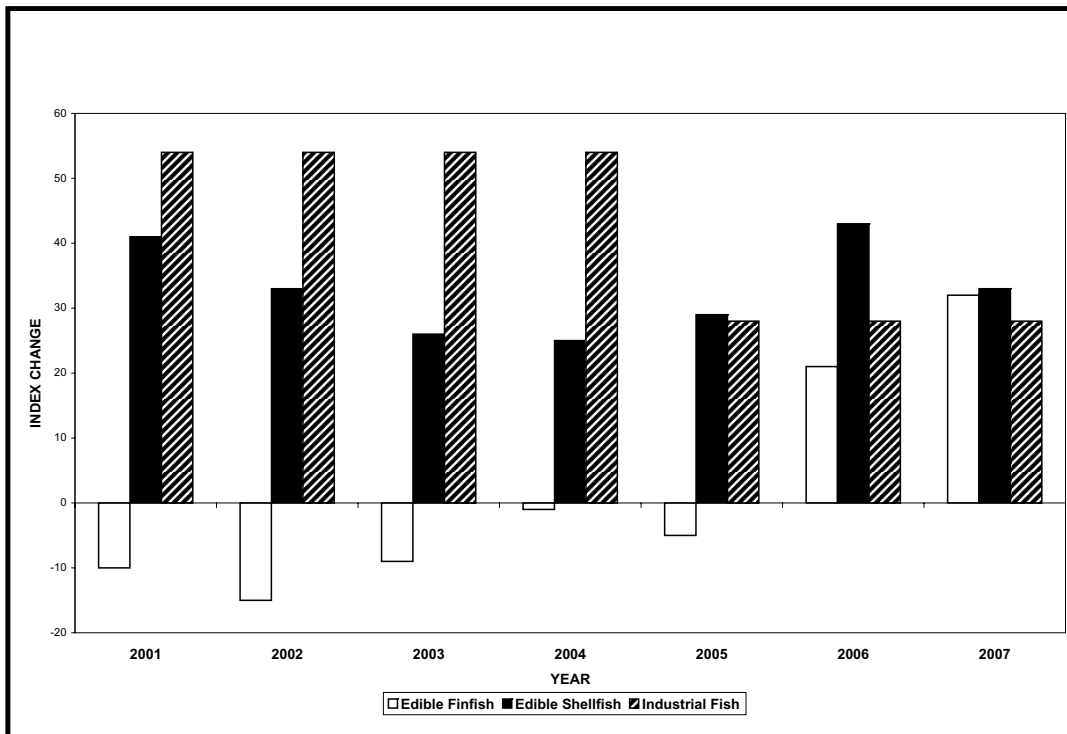
The exvessel price for each year was obtained by dividing total value for each species or group by its total quantity as reported in the U. S. commercial landings tables on pages 8 thru 13. The index for each species or group was obtained by multiplying the current annual price by the total quantity caught in 1982 (the base year). That

number was then divided by the 1982 value to obtain the final index:

$$\frac{(100 \times \text{Current price} \times \text{1982 quantity})}{\text{1982 Annual value}} = \text{Index}$$

Each index number measures price changes from the 1982 reference period when the index equaled 100. A species of fish that sold for \$0.75 a pound in 1986 and a \$1.00 a pound in 1982 would have an index of 75 in 1986. In 2006, if the price of the same species increased to \$1.07, the index in 2007 would be 107.

Percent Changes in the Exvessel Price Index, 2001-2007
(Change Relative to Base Year = 1982)



INDEXES OF EXVESSEL PRICES FOR FISH AND SHELLFISH, BY YEARS, 2001-2007
(1982=100)

Species	2001	2002	2003	2004	2005	2006	2007
Groundfish, et al:							
Cod	103	81	110	98	106	142	173
Haddock	227	230	228	205	230	319	308
Pollock:							
Atlantic	306	351	228	224	245	262	206
Alaska	128	108	107	143	159	171	171
Flounders	81	74	70	93	87	92	101
Total groundfish, et al.	114	105	106	114	118	142	152
Halibut	172	192	253	260	268	325	376
Sea herring	51	57	51	63	63	51	86
Salmon:							
Chinook	74	62	65	101	112	142	163
Chum	67	37	42	45	55	67	75
Pink	48	30	209	33	44	55	68
Sockeye	62	64	8	64	79	75	83
Coho	41	35	60	64	72	100	94
Total salmon	60	52	54	64	76	86	95
Swordfish	77	72	70	84	90	87	90
Tuna:							
Albacore	132	98	99	126	154	125	125
Bluefin	706	731	586	701	453	827	637
Skipjack	74	189	67	82	80	79	80
Yellowfin	120	396	156	146	80	180	199
Total tuna	116	309	128	132	91	152	159
Total edible finfish	90	134	91	99	95	121	132
Clams:							
Hard	148	128	139	120	175	178	164
Ocean Quahog	201	204	199	193	196	195	190
Soft	295	291	315	346	359	331	337
Surf	110	106	109	108	107	115	117
Total clams	167	156	165	160	187	186	181
Crabs:							
Blue	346	298	314	301	316	290	357
Dungeness	213	173	168	176	164	178	247
King	137	170	155	142	128	104	127
Snow	150	132	175	195	163	82	140
Total crabs	188	184	191	190	176	141	187
American lobster	150	155	172	182	205	185	201
Oysters	176	184	197	205	232	316	256
Scallops:							
Bay	288	153	143	287	325	342	220
Sea	102	105	112	118	209	178	180
Total scallops	103	96	101	116	193	169	162
Shrimp:							
Gulf and South Atlantic	95	82	66	70	81	73	85
Other	103	88	99	128	138	138	132
Total shrimp	95	83	67	73	84	76	87
Total edible shellfish	133	126	125	129	143	133	145
Total edible fish and shellfish	114	130	107	136	122	128	139
Industrial fish, Menhaden	154	154	154	128	128	128	205
All fish and shellfish	116	131	112	116	122	128	143

Plants and Employment

PROCESSORS AND WHOLESALERS: PLANTS, AND EMPLOYMENT, 2006

Area and State	Processing (1)		Wholesale (2)		Total	
	Plants	Employment	Plants	Employment	Plants	Employment
-----Number-----						
New England:						
Maine	34	737	167	867	201	1,604
New Hampshire	10	296	16	145	26	441
Massachusetts	56	2,466	172	2,214	228	4,680
Rhode Island	10	(3)	35	(3)	45	(3)
Connecticut	4	(3)	18	178	22	178
Total	114	3,499	408	3,404	522	6,903
Mid-Atlantic:						
New York	19	436	255	1,861	274	2,297
New Jersey	21	667	85	952	106	1,619
Pennsylvania	7	117	31	498	38	615
Delaware	1	(3)	4	23	5	23
District of Columbia	-	-	5	123	5	123
Maryland	23	1,142	47	511	70	1,653
Virginia	56	1,776	59	535	115	2,311
Total	127	4,138	486	4,503	613	8,641
South Atlantic:						
North Carolina	31	713	69	631	100	1,344
South Carolina	1	(3)	18	121	19	121
Georgia	6	636	29	443	35	1,079
Florida	33	1,865	290	2,554	323	4,419
Total	71	3,214	406	3,749	477	6,963
Gulf:						
Alabama	37	1,837	18	197	55	2,034
Mississippi	29	3,221	24	79	53	3,300
Louisiana	75	1,912	120	531	195	2,443
Texas	27	1,583	75	853	102	2,436
Total	168	8,553	237	1,660	405	10,213
Pacific:						
Alaska	158	9,377	118	226	276	9,603
Washington	108	6,591	140	1,151	248	7,742
Oregon	29	1,031	13	422	42	1,453
California	56	2,328	294	4,243	350	6,571
Hawaii	3	(3)	28	421	31	421
Total	351	19,327	565	6,042	916	25,369
Inland States or Other						
Areas: (4), Total	61	2,092	234	3,018	295	5,110
Grand total	892	40,823	2,336	22,376	3,228	63,199

(1) Data are based on North American Industry Classification System (NAICS) 3117 as reported to the Bureau of Labor Statistics.

(2) Data are based on North American Industry Classification System (NAICS) 42446 as reported to the Bureau of Labor Statistics.

(3) Included with Inland States.

(4) Includes Puerto Rico and Virgin Islands

Fishery Products Inspection

FISHERY PRODUCTS AND ESTABLISHMENTS INSPECTED IN CALENDAR YEAR, 2007

Region	Edible fishery products					
	Establishment (1)	Amount inspected (7)				
	In-plant (3)	Grade A (4)	PUFI (4)	No mark (5)	Lot (6)	Total
	-Average number-	----- Thousand pounds -----				
Northeast	66	20,419	93,584	26,012	298,071	438,086
Southeast	76	5,946	32,413	150,995	21,235	210,589
West	132	14,254	13,096	1,116,526	15,416	1,159,292
Total	274	40,619	139,093	1,293,533	334,722	1,807,967

(1) These establishments are inspected under contract and certified as meeting U.S. Department of Commerce (USDC) regulations for construction and maintenance of facilities and equipment processing techniques, and employment practices.

(3) Sanitarily inspected fish establishments processing fishery products under USDC inspection. As of December 2007, 138 of these were in the Hazard Analysis Critical Control Point (HACCP) Quality Management Program.

(4) Products processed under USDC inspection in inspected establishments and labeled with USDC inspection mark as "Processed Under Federal Inspection" (PUFI) and/or "U.S. Grade A."

(5) Products processed under inspection in inspected establishments but bearing no USDC inspection mark.

(6) Lot inspected and marked products checked for quality and condition at the time of examination and located in processing plants, warehouses, cold storage facilities, or terminal markets anywhere in the United States.

(7) Data include product inspected for export. Based on 2006 per capita consumption data, approximately 33 percent of seafood consumed in the U.S. is certified under the auspices of the Seafood Inspection Program.

Note:--Table may not add due to rounding.

Source:--NMFS, Seafood Inspection Program, F/SI.