

Prices

The Exvessel Price table is an index of changes in the relative dockside value of fish and shellfish sold by fishing vessels. The table indexes the average annual exvessel value (price per pound) received for each species or group to the average price per pound received for the same species or group in the base year 1982.

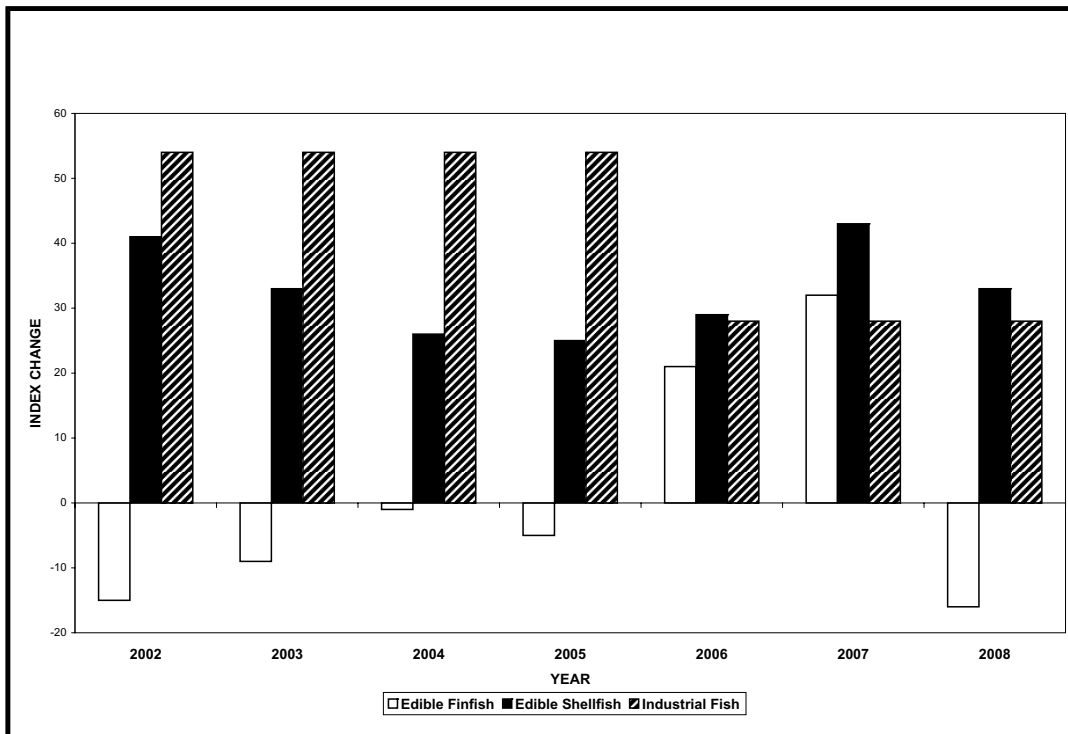
The exvessel price for each year was obtained by dividing total value for each species or group by its total quantity as reported in the U. S. commercial landings tables on pages 8 thru 13. The index for each species or group was obtained by multiplying the current annual price by the total quantity caught in 1982 (the base year). That

number was then divided by the 1982 value to obtain the final index:

$$\frac{(100 \times \text{Current price} \times \text{1982 quantity})}{\text{1982 Annual value}} = \text{Index}$$

Each index number measures price changes from the 1982 reference period when the index equaled 100. A species of fish that sold for \$0.75 a pound in 1986 and a \$1.00 a pound in 1982 would have an index of 75 in 1986. In 2007, if the price of the same species increased to \$1.07, the index in 2008 would be 107.

Percent Changes in the Exvessel Price Index, 200-2008
(Change Relative to Base Year = 1982)



INDEXES OF EXVESSEL PRICES FOR FISH AND SHELLFISH, BY YEARS, 2002-2008

(1982=100)

Species	2002	2003	2004	2005	2006	2007	2008
Groundfish, et al:							
Cod	81	110	98	106	142	173	207
Haddock	230	228	205	230	319	308	235
Pollock:							
Atlantic	351	228	224	245	262	206	229
Alaska	108	107	143	159	171	171	251
Flounders	74	70	93	87	92	101	110
Total groundfish, et al.	105	106	114	118	142	152	165
Halibut	192	253	260	268	325	376	378
Sea herring	57	51	63	63	51	86	97
Salmon:							
Chinook	62	65	101	112	142	163	179
Chum	37	42	45	55	67	75	119
Pink	30	209	33	44	55	68	126
Sockeye	64	8	64	79	75	83	88
Coho	35	60	64	72	100	94	122
Total salmon	52	54	64	76	86	95	116
Swordfish	72	70	84	90	87	90	84
Tuna:							
Albacore	98	99	126	154	125	125	133
Bluefin	731	586	701	453	827	637	832
Skipjack	189	67	82	80	79	80	271
Yellowfin	396	156	146	80	180	199	513
Total tuna	309	128	132	91	152	159	409
Total edible finfish	134	91	99	95	121	132	207
Clams:							
Hard	128	139	120	175	178	164	203
Ocean Quahog	204	199	193	196	195	190	190
Soft	291	315	346	359	331	337	310
Surf	106	109	108	107	115	117	122
Total clams	156	165	160	187	186	181	196
Crabs:							
Blue	298	314	301	316	290	357	410
Dungeness	173	168	176	164	178	247	252
King	170	155	142	128	104	127	148
Snow	132	175	195	163	82	140	153
Total crabs	184	191	190	176	141	187	210
American lobster	155	172	182	205	185	201	170
Oysters	184	197	205	232	316	256	310
Scallops:							
Bay	153	143	287	325	342	220	351
Sea	105	112	118	209	178	180	189
Total scallops	96	101	116	193	169	162	178
Shrimp:							
Gulf and South Atlantic	82	66	70	81	73	85	94
Other	88	99	128	138	138	132	142
Total shrimp	83	67	73	84	76	87	96
Total edible shellfish	126	125	129	143	133	145	159
Total edible fish and shellfish	130	107	136	122	128	139	181
Industrial fish, Menhaden	154	154	128	128	128	205	180
All fish and shellfish	131	112	116	122	128	143	180

Plants and Employment

PROCESSORS AND WHOLESALERS: PLANTS, AND EMPLOYMENT, 2007

Area and State	Processing (1)		Wholesale (2)		Total	
	Plants	Employment	Plants	Employment	Plants	Employment
-----Number-----						
New England:						
Maine	33	714	173	866	206	1,580
New Hampshire	9	287	17	132	26	419
Massachusetts	56	2,543	174	2,184	230	4,727
Rhode Island	10	265	36	(3)	46	(3)
Connecticut	4	68	16	163	20	231
Total	112	3,877	416	3,345	528	6,957
Mid-Atlantic:						
New York	21	464	262	1,927	283	2,391
New Jersey	17	538	87	1,023	104	1,561
Pennsylvania	8	104	32	547	40	651
Delaware	1	(3)	5	25	6	25
District of Columbia	-	-	5	(3)	5	0
Maryland	21	804	47	506	68	1,310
Virginia	49	1,824	60	578	109	2,402
Total	117	3,734	498	4,606	615	8,340
South Atlantic:						
North Carolina	29	639	68	651	97	1,290
South Carolina	2	(3)	18	132	20	132
Georgia	5	657	30	455	35	1,112
Florida	30	1,608	287	2,848	317	4,456
Total	66	2,904	403	4,086	469	6,990
Gulf:						
Alabama	36	1,695	18	214	54	1,909
Mississippi	26	3,072	26	90	52	3,162
Louisiana	72	1,925	105	547	177	2,472
Texas	31	1,598	83	900	114	2,498
Total	165	8,290	232	1,751	397	10,041
Pacific:						
Alaska	164	9,156	102	211	266	9,367
Washington	108	6,490	129	1,192	237	7,682
Oregon	29	1,074	12	434	41	1,508
California	54	2,062	284	4,233	338	6,295
Hawaii	3	(3)	31	518	34	518
Total	355	18,782	527	6,070	882	24,852
Inland States or Other						
Areas: (4), Total	62	1,774	262	3,289	324	5,063
Grand total	877	39,361	2,338	23,147	3,215	62,508

(1) Data are based on North American Industry Classification System (NAICS) 3117 as reported to the Bureau of Labor Statistics.

(2) Data are based on North American Industry Classification System (NAICS) 42446 as reported to the Bureau of Labor Statistics.

(3) Included with Inland States.

(4) Includes Puerto Rico and Virgin Islands

Fishery Products Inspection

FISHERY PRODUCTS AND ESTABLISHMENTS INSPECTED IN CALENDAR YEAR, 2008

Region	Edible fishery products					
	Establishment (1)	Amount inspected (7)				
	In-plant (3)	Grade A (4)	PUFI (4)	No mark (5)	Lot (6)	Total
	-Average number-	----- Thousand pounds -----				
Northeast	62	19,041	80,828	299,308	18,443	417,620
Southeast	75	5,975	27,868	157,063	18,164	209,070
West	143	13,185	11,241	1,452,252	14,707	1,491,385
Total	280	38,201	119,937	1,908,623	51,314	2,118,075

(1) These establishments are inspected under contract and certified as meeting U.S. Department of Commerce (USDC) regulations for construction and maintenance of facilities and equipment processing techniques, and employment practices.

(3) Sanitarily inspected fish establishments processing fishery products under USDC inspection. As of December 2008, 149 of these were in the Hazard Analysis Critical Control Point (HACCP) Quality Management Program.

(4) Products processed under USDC inspection in inspected establishments and labeled with USDC inspection mark as "Processed Under Federal Inspection" (PUFI) and/or "U.S. Grade A."

(5) Products processed under inspection in inspected establishments but bearing no USDC inspection mark.

(6) Lot inspected and marked products checked for quality and condition at the time of examination and located in processing plants, warehouses, cold storage facilities, or terminal markets anywhere in the United States.

(7) Data include product inspected for export. Based on 2007 per capita consumption data, approximately 43 percent of seafood consumed in the U.S. is certified under the auspices of the Seafood Inspection Program.

Note:--Table may not add due to rounding.

Source:--NMFS, Seafood Inspection Program, F/SI.