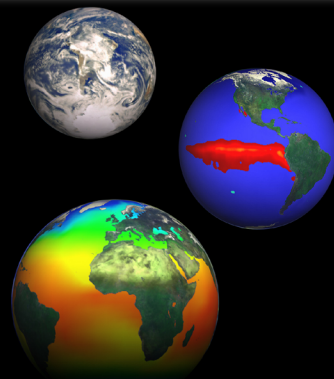
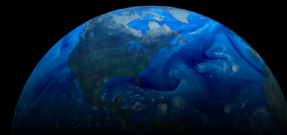
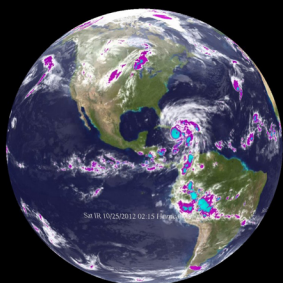


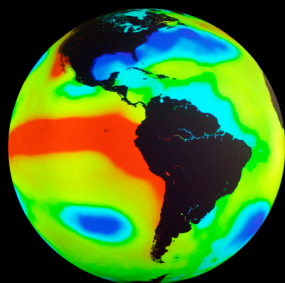
# Science On a Sphere®



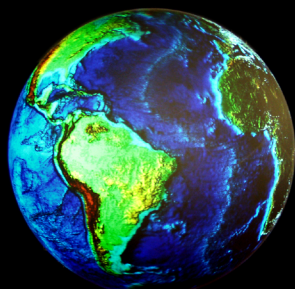
NOAA's *Science On a Sphere*® uses high-speed computers, projectors, and advanced imaging techniques to create the illusion of a planet, the Sun, a moon, or any other celestial body rotating in space. Weather and other geophysical data can also be shown moving across the surface of the Earth and other planets.



**Infrared data from 5 geostationary satellites** is combined and set into motion over the surface of the Earth. Massive storms are easily seen forming, rotating and moving over land and oceans.



**20 years of sea surface temperature anomalies** are shown forming constantly varying patterns on the world's oceans. Dramatic "El Niño" events stand out in 1982 and 1997.



**Topography and bathymetry** of the Earth's surface are rendered in 3-dimensional colors as the planet rotates from daylight into night, where the lights of the Earth at night come into view.

