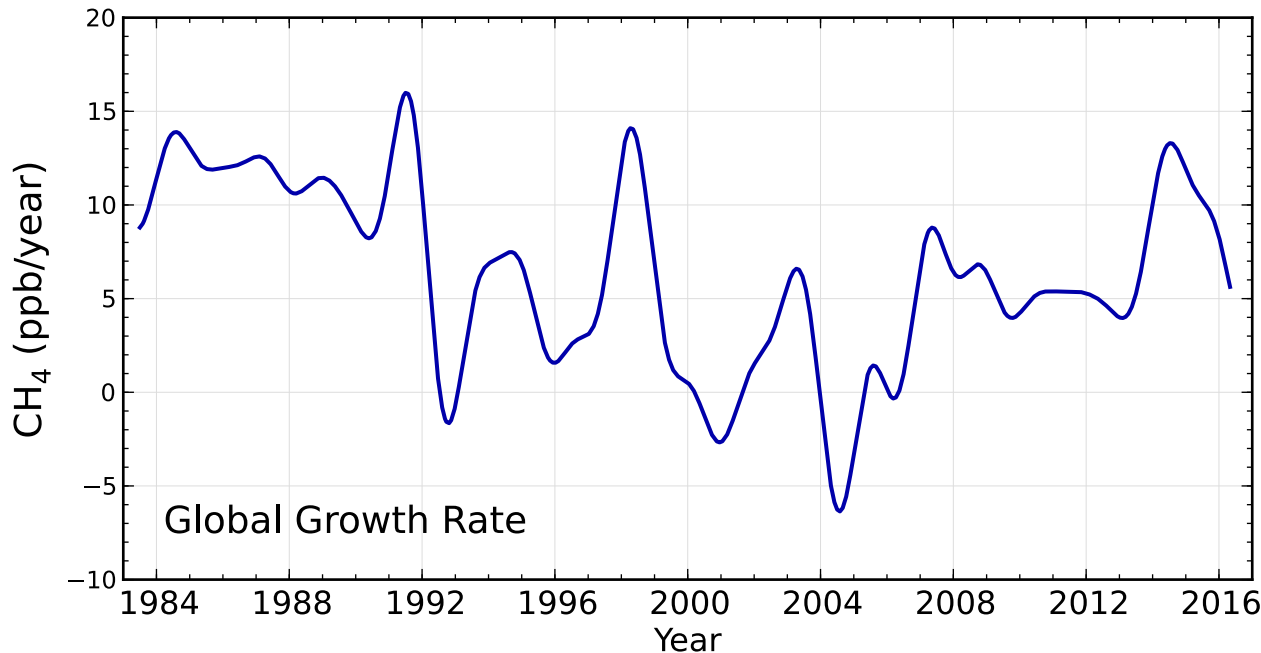
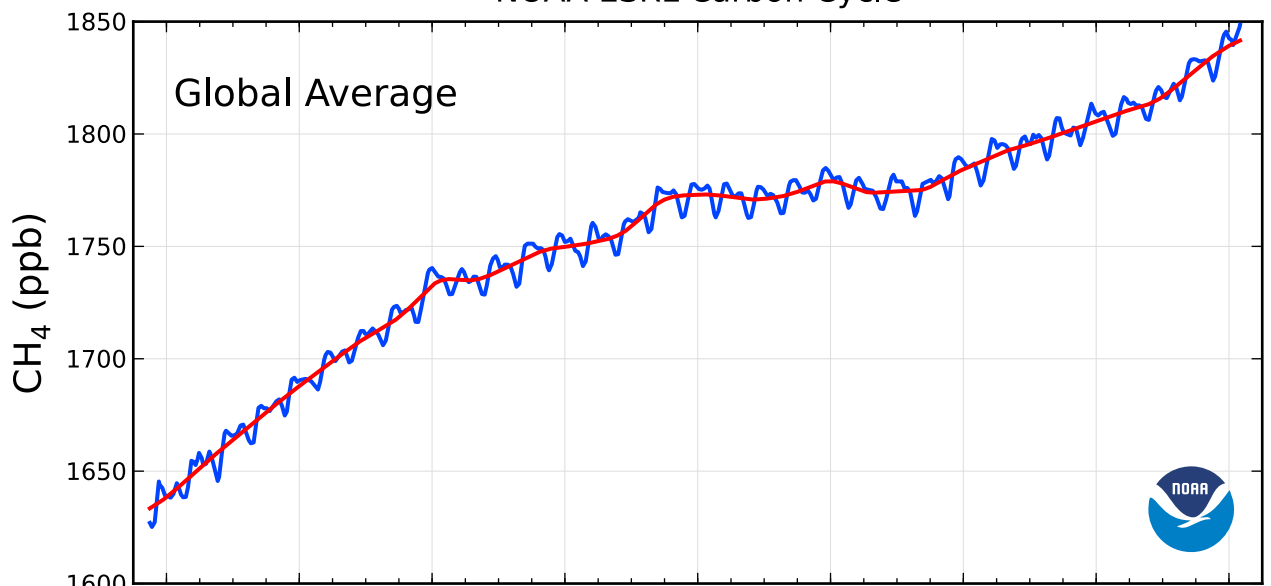


Methane Measurements NOAA ESRL Carbon Cycle



ESRL/GMD - 2016-August-29 15:25 pm

Top: Global average atmospheric methane mixing ratios (blue line) determined using measurements from the Carbon Cycle cooperative air sampling network. The red line represents the long-term trend. Bottom: Global average growth rate for methane. Contact: Dr. Ed Dlugokencky, NOAA ESRL Carbon Cycle, Boulder, Colorado, (303) 497-6228, ed.dlugokencky@noaa.gov, <http://www.esrl.noaa.gov/gmd/ccgg/>.