

Suomi National Polar-Orbiting Partnership (SNPP) Visible Infrared Imaging Radiometer Suite (VIIRS) Aerosol Products User's Guide

Version 3, June 2014

Table of Contents

| | |
|--|----|
| 1. Purpose of this Guide..... | 4 |
| 2. Points of Contact..... | 4 |
| 3. Acronym List..... | 4 |
| 4. Document Definitions | 5 |
| 5. VIIRS | 5 |
| 5.1 Overview | 5 |
| 5.2 Data Processing Chain..... | 6 |
| 5.3 Data Records Overview..... | 6 |
| 5.3.1 Raw Data Records (RDRs)..... | 6 |
| 5.3.2 Sensor Data Records (SDRs)/Level 1B..... | 6 |
| 5.3.3 Environmental Data Records (EDRs)/Level 2 | 7 |
| 5.3.4 Intermediate Products (IPs) | 7 |
| 5.3.5 Geolocation..... | 7 |
| 5.4 Data Availability | 7 |
| 5.4.1 CLASS..... | 7 |
| 5.5 Filenames | 8 |
| 6. VIIRS Aerosol Algorithm | 9 |
| 6.1 VIIRS Bands Relevant to the Aerosol Products | 9 |
| 6.2 Summary of the Aerosol Algorithm | 9 |
| 6.3 Aggregation of the Aerosol EDR from the Aerosol IP | 11 |
| 7. VIIRS Aerosol Products..... | 12 |
| 7.1 Aerosol IP | 12 |
| 7.2 Aerosol EDR..... | 14 |
| 7.3 Aerosol EDR Geolocation | 15 |

| | |
|--|----|
| 7.4 Suspended Matter EDR..... | 16 |
| 7.5 M-Band Terrain-Corrected Geolocation | 17 |
| 8. Known Issues to Date..... | 18 |
| 9. Additional Documentation..... | 19 |
| 9.1 Common Data Format Control Book (CDFCB) | 19 |
| 9.2 Algorithm Theoretical Basis Document (ATBD) | 19 |
| 9.3 Operational Algorithm Description (OAD) | 20 |
| 10. References | 20 |
| Appendix A: VIIRS Aerosol Products Quality Flags..... | 21 |
| A.1. IP Quality Flags..... | 21 |
| A.2. EDR Quality Flags | 27 |
| A.3. Suspended Matter Quality Flags..... | 30 |
| Appendix B: Helpful Tools for Working with VIIRS Files | 33 |
| B.1 HDF5 Tools | 33 |
| B.2 IDL Tools..... | 33 |

Figures

| | |
|--|----|
| Figure 1. SNPP Filename Fields with AOT EDR Filename Example..... | 8 |
| Figure 2. IP to EDR Aggregation..... | 12 |
| Figure 3. IP AOT file opened in HDFView to examine details of data structures and metadata. | 13 |
| Figure 4. Aerosol EDR File opened in HDFView to examine details of data structures and metadata. | 15 |
| Figure 5. Aerosol Geolocation File opened in HDFView to examine details of data structures and metadata. | 16 |
| Figure 6. Suspended Matter EDR File opened in HDFView to examine details of data structures and metadata. | 17 |
| Figure 7. M-Band Terrain-Corrected Geolocation File opened in HDFView to examine details of data structures and metadata. | 18 |

Tables

| | |
|------------------------------------|---|
| Table 1. Acronyms..... | 4 |
| Table 2. VIIRS Aerosol Bands | 9 |

Table 3. Suspended Matter types and conditions under which each type is chosen. 10

Table 4. Pixel-level quality flag conditions for AOT and APSP 11

Table 5. Summary of CDFCB contents. 19

1. Purpose of this Guide

This VIIRS Aerosol Products Users Guide is intended for users of the Aerosol Products generated from the Visible Infrared Imaging Radiometer Suite (VIIRS) on board the Suomi National Polar-Orbiting Partnership (S-NPP) satellite. It provides a general introduction to the VIIRS instrument, aerosol data products, format, content, and their applications. It serves as an introduction and reference to more detailed technical documents about the VIIRS aerosol algorithms and products such as the Algorithm Theoretical Basis Document (ATBD) and Operational Algorithm Document (OAD) (see Section 9).

2. Points of Contact

For questions or comments regarding this document, please contact Istvan Laszlo (Istvan.Laszlo@noaa.gov) and Shobha Kondragunta (Shobha.Kondragunta@noaa.gov), co-leads of the VIIRS Aerosol Calibration/Validation Group at NOAA NESDIS STAR.

3. Acronym List

Table 1. Acronyms

| | |
|--------|---|
| AOD | Aerosol Optical Depth |
| AOT | Aerosol Optical Thickness |
| APSP | Aerosol Particle Size Parameter (Ångström Exponent) |
| AE | Ångström Exponent |
| ATBD | Algorithm Theoretical Basis Document |
| AVHRR | Advanced Very High Resolution Radiometer |
| C3S | Command, Control, and Communications Segment |
| CDFCB | Common Data Format Control Book |
| CDR | Climate Data Record |
| CLASS | Comprehensive Large Array-Data Stewardship System |
| DNB | Day Night Band |
| EDR | Environmental Data Record |
| HDF5 | Hierarchical Data Format 5 |
| IDPS | Interface Data Processing System |
| IP | Intermediate Product |
| JPSS | Joint Polar Satellite System |
| LUT | Look Up Table |
| MODIS | Moderate Resolution Imaging Spectroradiometer |
| NASA | National Aeronautics and Space Administration |
| NCEP | National Center for Environmental Prediction |
| NESDIS | National Environmental Satellite, Data, and Information Service |
| NOAA | National Oceanic and Atmospheric Administration |
| NPP | National Polar-orbiting Partnership |
| OAD | Operational Algorithm Description |

| | |
|-------|--|
| QF | Quality Flag |
| RDR | Raw Data Records |
| SDR | Sensor Data Record |
| STAR | Center for Satellite Applications and Research |
| SM | Suspended Matter |
| TOA | Top of Atmosphere |
| VCM | VIIRS Cloud Mask |
| VIIRS | Visible Infrared Imaging Radiometer Suite |

4. Document Definitions

This document will refer to aerosol optical thickness (AOT) instead of aerosol optical depth (AOD) for consistency with other VIIRS Aerosol Product documentation.

Aerosol particle size parameter (APSP) is defined as the Ångström Exponent (α) (see ATBD for more details).

Suspended matter (SM) refers to the aerosol types, such as dust, smoke, sea salt etc. (see ATBD for more details).

5. VIIRS

5.1 Overview

VIIRS is one of the five instruments on board the Suomi NPP satellite. It is a scanning radiometer with capabilities to extend and improve upon or continue the heritage of AVHRR and MODIS for meeting the needs of short term weather forecasting with near real time satellite observations and long term climate change monitoring with multi-sensor climate data records (CDRs). VIIRS data is used to measure cloud and aerosol properties, ocean color, sea and land surface temperature, ice motion and temperature, fires, and Earth's albedo. The S-NPP satellite, and therefore VIIRS, has an 824 km sun-synchronous orbit (inclination=98.7°) with a 1:30 pm ascending node. It achieves global coverage every day and has a repeat cycle of approximately 16 days. VIIRS has a swath width of 3040 km with a spatial resolution of ~375 m at nadir in the Imagery (I) Bands and ~750 m at nadir in the Moderate (M) Bands. Through a system of pixel aggregation techniques, VIIRS controls pixel growth towards the edge of scan such that the pixel sizes are comparable to nadir. For More information about this “bow-tie removal” aggregation scheme can be found in the SDR User's Guide (<https://cs.star.nesdis.noaa.gov/NCC/UsersGuideVIIRS>) and the Imagery Products ATBD (http://npp.gsfc.nasa.gov/science/sciencedocuments/ATBD_122011/474-00031_Rev-Baseline.pdf). Additional information and specifications for S-NPP and VIIRS can be found at http://npp.gsfc.nasa.gov/spacecraft_inst.html.

5.2 Data Processing Chain

The S-NPP satellite transmits raw instrument data to the Command, Control, and Communications Segment (C3S) which is then routed to the Interface Data Processing Segment (IDPS) for operational data processing. The IDPS processes the Raw Data Records (RDRs) to create Sensor Data Records (SDRs), which are subsequently processed into Intermediate Products (IPs) and then Environmental Data Records (EDRs). The IDPS then transmits RDRs, SDRs, EDRs, and some IPs to NOAA's Comprehensive Large Array-data Stewardship System (CLASS) for distribution and archiving.

5.3 Data Records Overview

VIIRS data products are stored and distributed in HDF5 format, and were designed using the native HDF5 library. VIIRS files from IDPS contain a single granule of a single data type. Granules are associated with an integer number of sensor scans, so the definition varies between sensors and data products. VIIRS aerosol product granules are 48 scan lines, or approximately 86 seconds in length. The pixel-level M-band resolution data is contained in 768 x 3200 arrays, and the aerosol EDR data is contained in 96 x 400 arrays. The CDFCBs provide information on other products and their granule lengths (see Section 9). Due to the relatively short granule length and the relatively high data resolution, for each day including both daytime and nighttime, users should expect approximately 1000 files (sizes are ~1.3 MB each for aggregated aerosol AOT and ASPS EDR and geolocation, ~15 MB each for pixel level AOT Intermediate Product (IP), 1.5 MB for pixel level Suspended Matter EDR, and ~78 MB each for M-band pixel-level geolocation). Some data sources downstream of IDPS may post-process data, including aggregating multiple granules or packaging different data types into a single file which will alter these approximations (see Section 5.4).

5.3.1 Raw Data Records (RDRs)

S-NPP RDRs are binary data generated by the sensors on board the S-NPP spacecraft. They contain engineering and house-keeping data for spacecraft and sensor monitoring as well as science data for the production for SDRs. The required inputs for generating SDR products are verified RDRs, which contain the information that is converted into calibrated TOA radiance, reflectance, and brightness temperature, along with other sensor calibration information. A comprehensive discussion of the contents and structure of RDR products is available in Volume II of the CDFCB (see Section 9).

5.3.2 Sensor Data Records (SDRs)/Level 1B

S-NPP SDRs contain calibrated and geolocated TOA radiance and reflectance data produced from processing the RDRs along with quality flags and metadata. An overview of the SDR products is available in the SDR User's Guide at <https://cs.star.nesdis.noaa.gov/NCC/UsersGuideVIIRS> and a complete description is available in Volume III of the CDFCB (see Section 9).

5.3.3 Environmental Data Records (EDRs)/Level 2

S-NPP VIIRS EDRs contain derived bio-geophysical parameters that are broadly categorized into five sections: atmosphere (clouds and aerosols), land, ocean, imagery, and cryosphere. Only the aerosol product EDRs are discussed in this document (see Section 7). A full list of all available VIIRS EDRs is located at <http://npp.gsfc.nasa.gov/science/DataProducts.html> and described in more detail in Volume IV, Parts II-IV of the CDFCB (see Section 9).

5.3.4 Intermediate Products (IPs)

Intermediate products are the retrieval byproducts or data subsets that are created through processing that are required for a later primary data product's generation or used as input for secondary processing. Some IPs such as the VIIRS cloud mask (VCM), aerosol optical thickness (AOT) and aerosol particle size parameter (APSP) are delivered and available to the users through CLASS. The contents of AOT and ASPSP IP files are discussed in more detail in Section 7.1 of this document.

5.3.5 Geolocation

Unless packaged through post processing, the VIIRS Geolocation data is stored in separate geolocation files that must be used in conjunction with SDRs, EDRs, and IPs. The contents of the geolocation files related to the aerosol products are discussed in more detail in Section 7 of this document and a full description of all geolocation files can be found in Volume IV, Part I of the CDFCB (see Section 9).

5.4 Data Availability

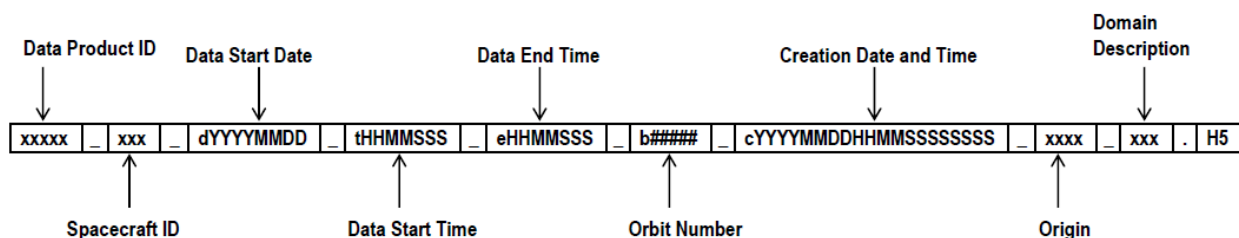
5.4.1 CLASS

The primary data source for SNPP products is through NOAA's CLASS web interface (<http://www.class.ncdc.noaa.gov>). All aerosol products described in this document are available from this source. The VIIRS aerosol EDRs can be found under the title "S-NPP Visible Infrared Imaging Radiometer Suite (VIIRS)" and the aerosol IPs are under the title "S-NPP Retained Intermediate Products - Non-Gridded (RIP_NOGRD)". Data delivered to CLASS from the IDPS has a latency specification of 6 hours from observation, but can increase due to data issues along the processing chain described in Section 5.2. On CLASS, users will have options with respect to the format in which they prefer data. Data searches on CLASS can be defined by data type, date and time range, geolocation, node, granule ID, and beginning orbit number. When ordering data, it is possible to request a certain level of packaging and aggregation of the NPP data files. By default, CLASS will package and aggregate data orders, meaning they will package corresponding geolocation files together with the requested data files and aggregate four 86-second granules into a single file. This can be changed on a case-by-case basis on the order form or can be re-set in the user preferences to apply to all orders. There are two basic ways to order data from CLASS: ad hoc orders and subscriptions. Within the ad hoc category, there are three

options. If the user elects to search using the normal “Search” button, file orders will be restricted to 100 files. This option is useful if you would like to view and inventory listing of the data available within your search parameters and select a small number of specific files. If the user is confident about their search parameters, they may also use the “Quick Search and Order” button that will skip the inventory list and allow users to order up to 1000 files each time. For larger order sizes, users can request Block Orders through the CLASS helpdesk (class.help@noaa.gov). This access will allow orders of up to 3000 files. Finally, subscriptions are also available to users who require regular data access in the form of an automatic push or pull distribution. Requests for subscriptions must be sent to the CLASS helpdesk. Ad hoc data orders are delivered using FTP, where data will remain for 48 hours (requests can be made for longer holding times). An excellent visual walk through of the NPP data order procedure is available at:

http://www.class.ngdc.noaa.gov/notification/pdfs/CLASS_Tutorial_NPPDataAccess_20110909.pdf.

5.5 Filenames



`VA000_npp_d20120626_t1446422_e1448064_b03437_c20120626210813252085_noaa_ops.h5`

Figure 1. SNPP Filename Fields with AOT EDR Filename Example.

Figure 1 describes the file naming convention of the S-NPP data products. A full description of each of the file name data field along with applicable values is available in the CDFCB, Volume 1. The relevant Data Product IDs for the aerosol products are IVAOT (Aerosol IP), VA000 (Aerosol EDR), VSUMO (Suspended Matter EDR), IVAMI (Aerosol Model Information IP), GAERO (Aerosol EDR Geolocation), and GMTCO (Pixel-Level Terrain Corrected Geolocation). It is worth noting that the S-NPP granule ID does not appear in the file name. The granule ID is available within each data file as the metadata item “N_Granule_ID”. It is written as a 15 character string, where the first three characters are the satellite identifier of S-NPP and the next 12 numeric characters specify the number of tenths of a second since the first ascending node after launch.

6. VIIRS Aerosol Algorithm

6.1 VIIRS Bands Relevant to the Aerosol Products

VIIRS has 22 spectral bands, of which 16 are M-bands (~750 m resolution at nadir), 5 are I-bands (~375 m resolution at nadir), and one is so-called Day Night Band (DNB). Table 2 is a chart of the bands used when creating the aerosol products. A comprehensive chart of the VIIRS bands can be found at

http://www.star.nesdis.noaa.gov/jpss/documents/meetings/2011/NPP_Users_Workshop/02.0%20NPP%20SDR%20Overview-July%2023%202011%20Weng.pdf on slide 17.

Table 2. VIIRS Aerosol Bands

| Band Name | Wavelength(μm) | Bandwidth | Aerosol Algorithm Use |
|-----------|-----------------------------|-----------|---|
| M1 | 0.412 | 0.0200 | Land Retrieval |
| M2 | 0.445 | 0.0180 | Land Retrieval, Land Ångström Exponent |
| M3 | 0.488 | 0.0200 | Land Retrieval, Internal Tests |
| M4 | 0.555 | 0.0200 | Internal Tests |
| M5 | 0.672 | 0.0200 | Land Retrieval (Reference), Ocean Retrieval, Internal Tests, Land Ångström Exponent |
| M6 | 0.746 | 0.0150 | Ocean Retrieval |
| M7 | 0.865 | 0.0390 | Ocean Retrieval (Reference), Internal Tests, Ocean Ångström Exponent |
| M8 | 1.240 | 0.0200 | Ocean Retrieval, Internal Tests |
| M9 | 1.378 | 0.0150 | Internal Tests |
| M10 | 1.610 | 0.0600 | Ocean Retrieval, Internal Tests, Ocean Ångström Exponent |
| M11 | 2.250 | 0.0500 | Land Retrieval, Ocean Retrieval, Internal Tests |
| M12 | 3.700 | 0.1800 | Internal Tests |
| M15 | 10.7625 | 1.0000 | Internal Tests |
| M16 | 12.0125 | 0.9500 | Internal Tests |

6.2 Summary of the Aerosol Algorithm

The VIIRS Aerosol Algorithm retrieves AOT at a pixel level for a range of 11 wavelengths (0.412, 0.445, 0.488, 0.550, 0.555, 0.672, 0.746, 0.865, 1.240, 1.610, and 2.250 microns). The current version of the algorithm does not retrieve aerosol properties over bright surfaces (highly reflective desert surfaces, snow and ice cover, and fire spots), in cloud-affected pixels, over inland water such as the Great Lakes, or at night. The AOT is calculated separately for land and

ocean using a LUT of pre-computed values for several atmospheric parameters to simplify radiative transfer calculations. Pixel level AE is then calculated from AOT at two different wavelengths (0.455 and 0.672 microns over land and 0.865 and 1.610 microns over ocean). The pixel level AOT and AE products are aggregated to create the EDR (see Section 6.3). The suspended matter type for each pixel is derived for pixels with an AOT greater than a specified threshold. Possible suspended matter types and the conditions under which they are chosen are shown in Table 3. In depth descriptions of the algorithms are available in the Aerosol Optical Thickness and Particle Size Parameter ATBD (Baker, 2014) and the Suspended Matter ATBD (Baker, 2011). The algorithm flow and logic charts are provided in Figures 1, 2, 3, 4, and 5 of the Aerosol Products OAD (see Section 9). The aerosol retrieval algorithm is also described in Jackson et al. (2013), while preliminary validation results are presented in Liu et al. (2014).

Table 3. Suspended Matter types and conditions under which each type is chosen.

| SM Type | Conditions over Land | Conditions over Ocean |
|---------------------------------------|--|--|
| Ash | VIIRS Cloud Mask identifies the presence of volcanic ash (tuned out in IDPS build as of November 2, 2012 due to false positives) | |
| Dust | AOT at 550 nm > 0.15 and dust Land Aerosol Model selected (See EDR Quality Flags in Appendix A) | AOT at 550 nm > 0.15 and fine mode fraction < 0.2 |
| Smoke | AOT at 550 nm > 0.15 and non-dust Land Aerosol Model selected (high/low absorbing smoke; clean/polluted urban aerosol) (See EDR Quality Flags in Appendix A) | AOT at 550 nm > 0.15, fine mode fraction ≥ 0.5 (See EDR Quality Flags in Appendix A) |
| Sea Salt | N/A | $0.15 < \text{AOT at 550 nm} < 0.3$ and $0.2 \leq \text{fine mode fraction} < 0.5$ |
| Unknown (Undetermined SM Type) | N/A | AOT at 550nm ≥ 0.3 and $0.2 \leq \text{fine mode fraction} < 0.5$ (See EDR Quality Flags in Appendix A) |
| None (No SM) | AOT at 550 nm ≤ 0.15 | |

6.3 Aggregation of the Aerosol EDR from the Aerosol IP

The aerosol EDR is created from the aerosol IP product through a system of quality checks, filtering, and spatial aggregation of 8x8 pixel IP values (Jackson et al., 2013). The logic flow for creating each 8x8 pixel horizontal cell within the aerosol EDR is shown in Figure 2 below. The top two pixel-level quality flags referenced in Figure 2 are “high” and “degraded”. The conditions for each of these quality flags are described in Table 4, along with the conditions for “excluded” quality pixels (have a retrieval but are excluded from the aggregation process), and “not produced” quality pixels (no retrieval). The EDR quality flags referenced in Figure 2 are discussed in more detail in Appendix A. The corresponding aerosol EDR geolocation is determined by simply taking the central geolocation point for each horizontal cell.

Table 4. Pixel-level quality flag conditions for AOT and APSP

| | Not Produced | Excluded | Degraded | High |
|-------------|--|---|---|-------------|
| AOT | Solar zenith angle > 80°; Missing or saturated channel reflectance (L: M1, M2, M3, M5, M8, M11; O: M5, M6, M7, M8, M10, M11); Missing ancillary data (wind speed, wind direction, precipitable water, surface air temperature, column ozone, surface pressure); Probably or confidently cloudy; Snow/ice present; Fire present; Inland or coastal water; Sun glint present; Turbid water present; Bright surface present. | Retrieved AOT at 550nm is out of spec range (0.0-2.0); Missing channel reflectance/brightness temperature (L: M7, M9, M10, M12, M15, M16; O: M3, M4, M15, M16) | 65° ≤ Solar Zenith Angle < 80° Cloud shadow present; Cirrus present; Adjacent pixel probably or confidently cloudy; Volcanic ash present; Soil dominant pixel; Retrieval residual beyond threshold. | Otherwise |
| APSP | Non-positive AOT at the channels used for AE Calculation (L: M2/M5; O: M7/M10) | Out of spec range (-1.0-3.0) | AOT at 550 nm < 0.15 | Otherwise |

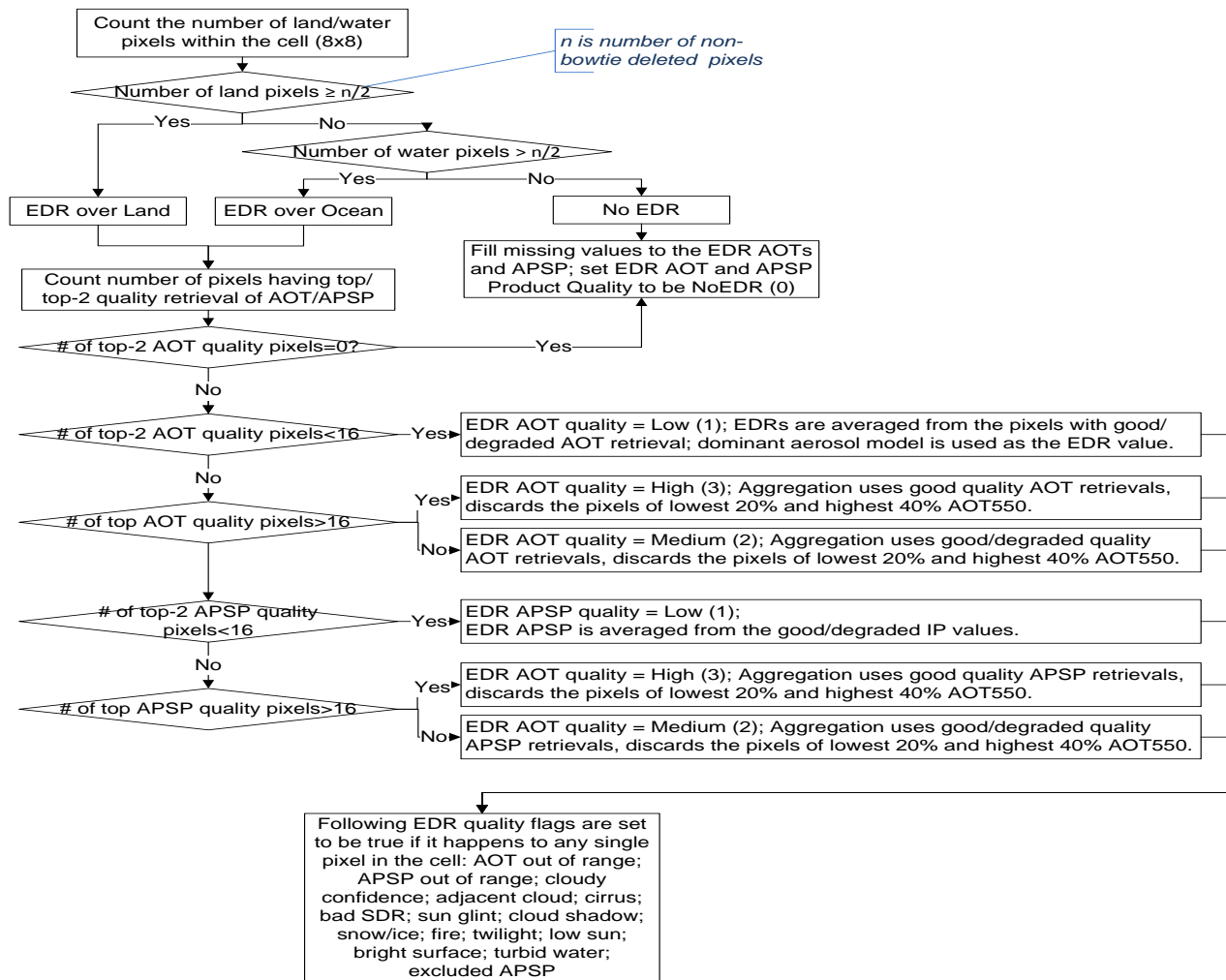


Figure 2. IP to EDR Aggregation

7. VIIRS Aerosol Products

The VIIRS aerosol algorithm produces several data products that are available to users via CLASS. The following sections describe the data that appears in unaggregated, unpackaged granules of the aerosol data products. Helpful tools for working with these data products are described in Appendix B.

7.1 Aerosol IP

The VIIRS aerosol IP contains AOT at 550 nm (see Section 6.2), slant column AOT at 550 nm, and Ångström Exponent. This is a pixel level (~750 m) retrieval that is stored in 768 X 3200 floating point array. There are numerous quality flags (described in detail in Appendix A) which are in 8-bit integer format. The HDF5 file contains all the metadata for the granule. To match an

Aerosol IP to its corresponding Aerosol Geolocation file (GMTCO), ensure that the date, start time, end time, and orbit number in each filename are identical. For example,

GMTCO_npp_d20120104_t0001202_e0002443_b00959_c201204022745955416_noaa_ops.h5

is the corresponding geolocation file for the Aerosol IP

IVAOT_npp_d20120104_t0001202_e0002443_b00959_c201204022745955416_noaa_ops.h5

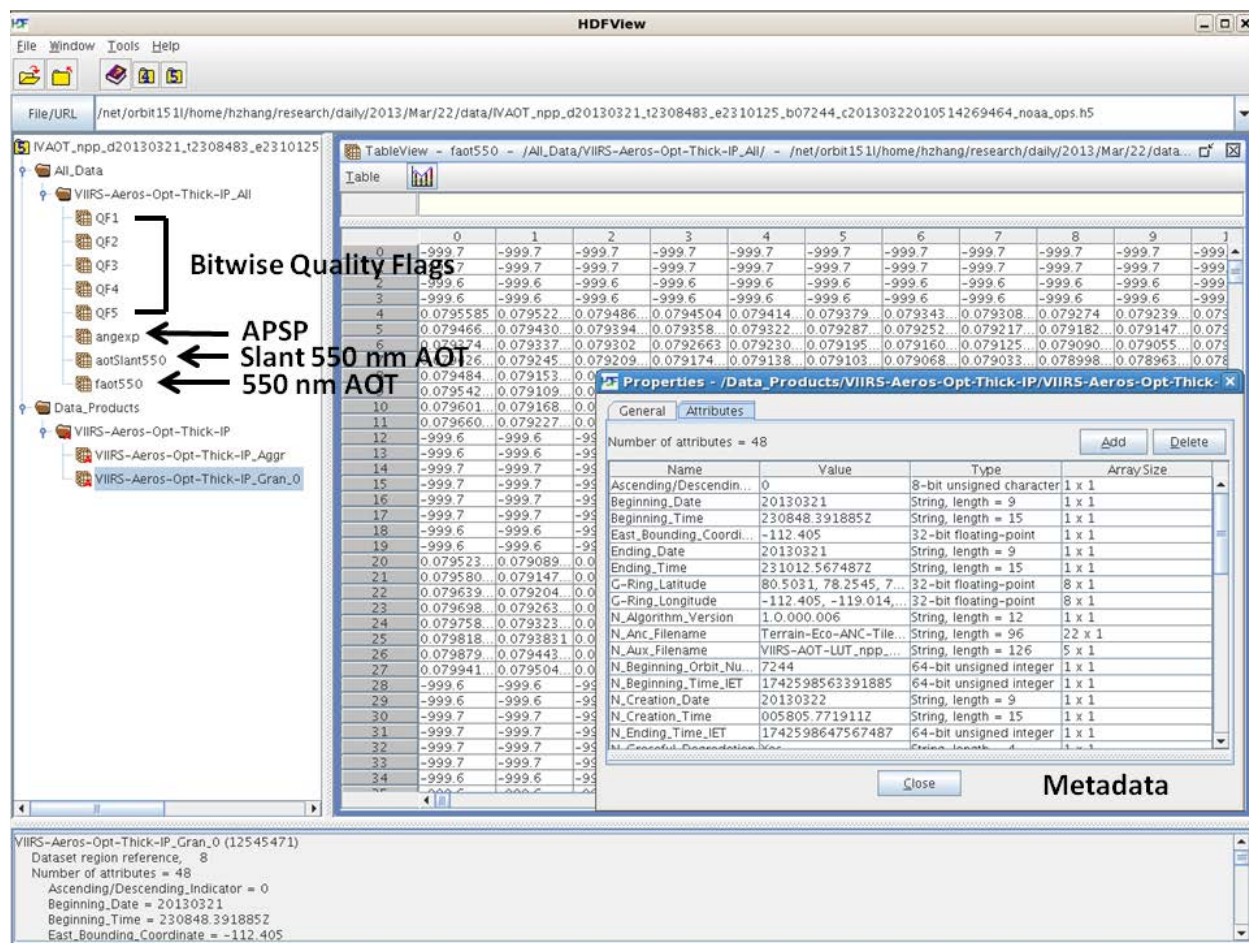


Figure 3. IP AOT file opened in HDFView to examine details of data structures and metadata.

One notable difference between Aerosol IP and Aerosol EDR (Section 7.2) is that the IP AOT file may contain information from model prediction from Navy Aerosol Analysis and Prediction System (NAAPS), data interpolation from surrounding pixels, or AOT climatology. When there are pixels with no retrievals due to clouds or bright surface or night time, NAAPS predicted AOT interpolated to VIIRS observation time are used to fill in. If NAAPS predictions are not available, a climatology based on Global Aerosol Climatology Project (GACP) is used. This information is for downstream use by the land surface albedo retrievals and not used by the

[Back to Table of Contents](#)

Aerosol EDR. The NAAPS values in the Aerosol IP file are explicitly flagged and should not be used when VIIRS Aerosol IP data are analyzed. The quality flags for Aerosol IP are 0 for high, 1 for degraded, 2 for excluded, and 3 for not produced. It is recommended that only data with quality flag 0 be used.

7.2 Aerosol EDR

The VIIRS aerosol EDR contains the AOT for 11 wavelengths ranging from 0.412-2.25 microns (see Section 6.2) and the Ångström Exponent. These values are stored as a 96 x 400 array of 16-bit integers with the corresponding scale and offset stored separately in the granule. To convert the 16-bit integers to floating point numbers, users need to multiply by the scale first, and then add the offset. There are numerous quality flags (described in detail in Appendix B) which are in 8-bit integer format. The small mode fraction is provided in 8 bit integer format. Finally, the HDF5 file will contain all the metadata for the granule. All the data in this file is at the horizontal cell resolution (8x8 pixels, approximately 6km at nadir). The Aerosol EDR requires a corresponding Aerosol EDR geolocation (GAERO) for analysis. To match an Aerosol EDR to its corresponding Aerosol Geolocation file, ensure that the date, start time, end time, and orbit number in each filename are identical. For example,

GAERO_npp_d20120626_t1958134_e1959376_b03440_c20120627021509002956_noaa_ops.h5
is the corresponding geolocation file for the Aerosol EDR

VAOOO_npp_d20120626_t1958134_e1959376_b03440_c20120627024612139725_noaa_ops.h5

The quality flags for the aerosol EDR are 0 for not produced, 1 for low quality, 2 for medium quality, and 3 for high quality. It is recommended that only EDR data with quality flag 3 be used. “Medium” quality retrievals may also be adequate for some applications.

Users should be aware that currently the numeric values of quality flags denoting “high” quality and “not produced” pixels in the IP and EDR are reversed! A QF value of 0 means “not produced” in the EDR, while it indicates “high” quality in the IP. Similarly, a QF value of 3 indicates “high” quality EDR, while it means “not produced” in the IP.

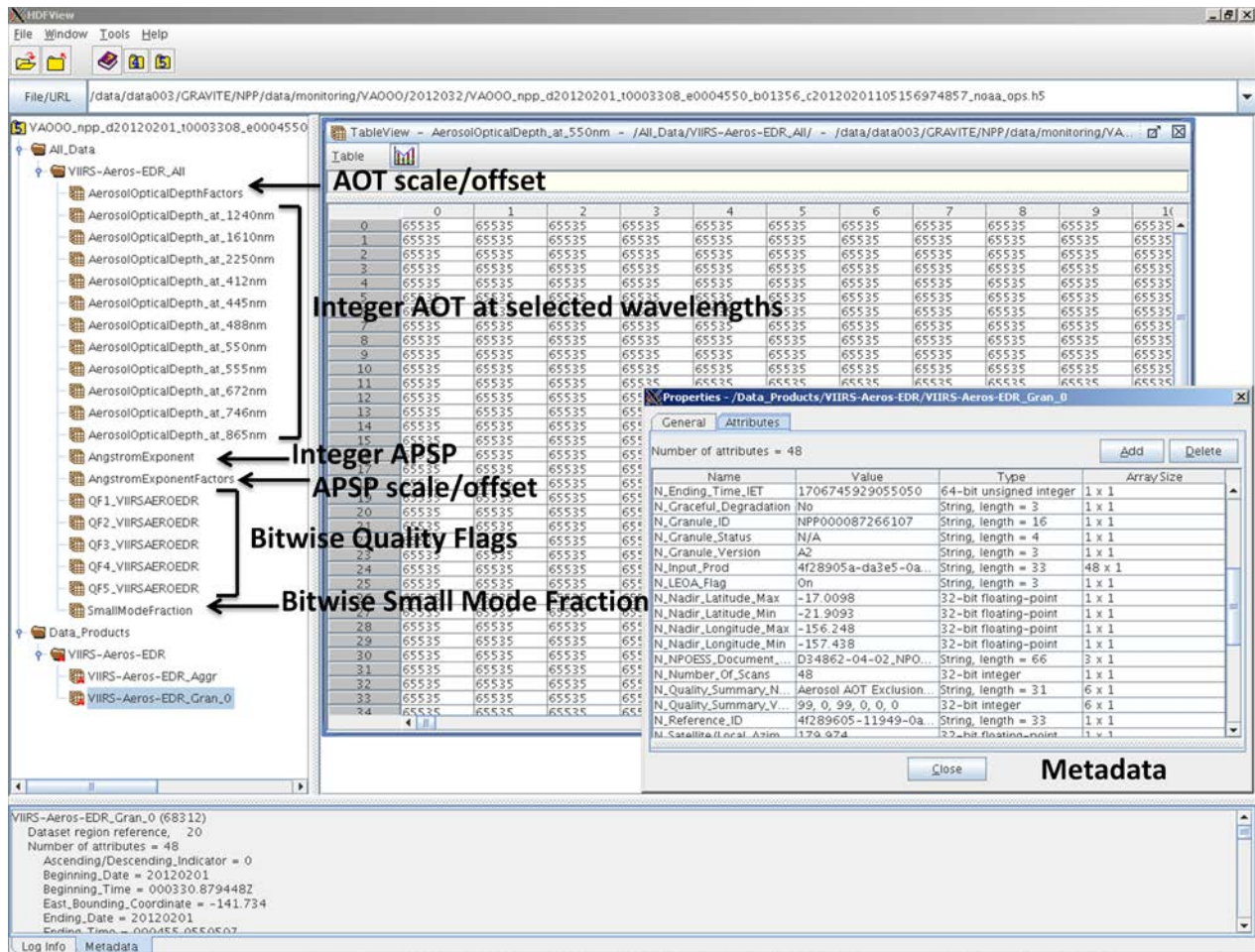


Figure 4. Aerosol EDR File opened in HDFView to examine details of data structures and metadata.

7.3 Aerosol EDR Geolocation

The aerosol EDR geolocation file (GAERO) contains the geolocation information, overpass time and satellite geometry at the horizontal cell resolution to be used in conjunction with the AOT and APSP data in the Aerosol EDR files. Note that the start and mid times are expressed in milliseconds after the launch basetime (1698019234000000).

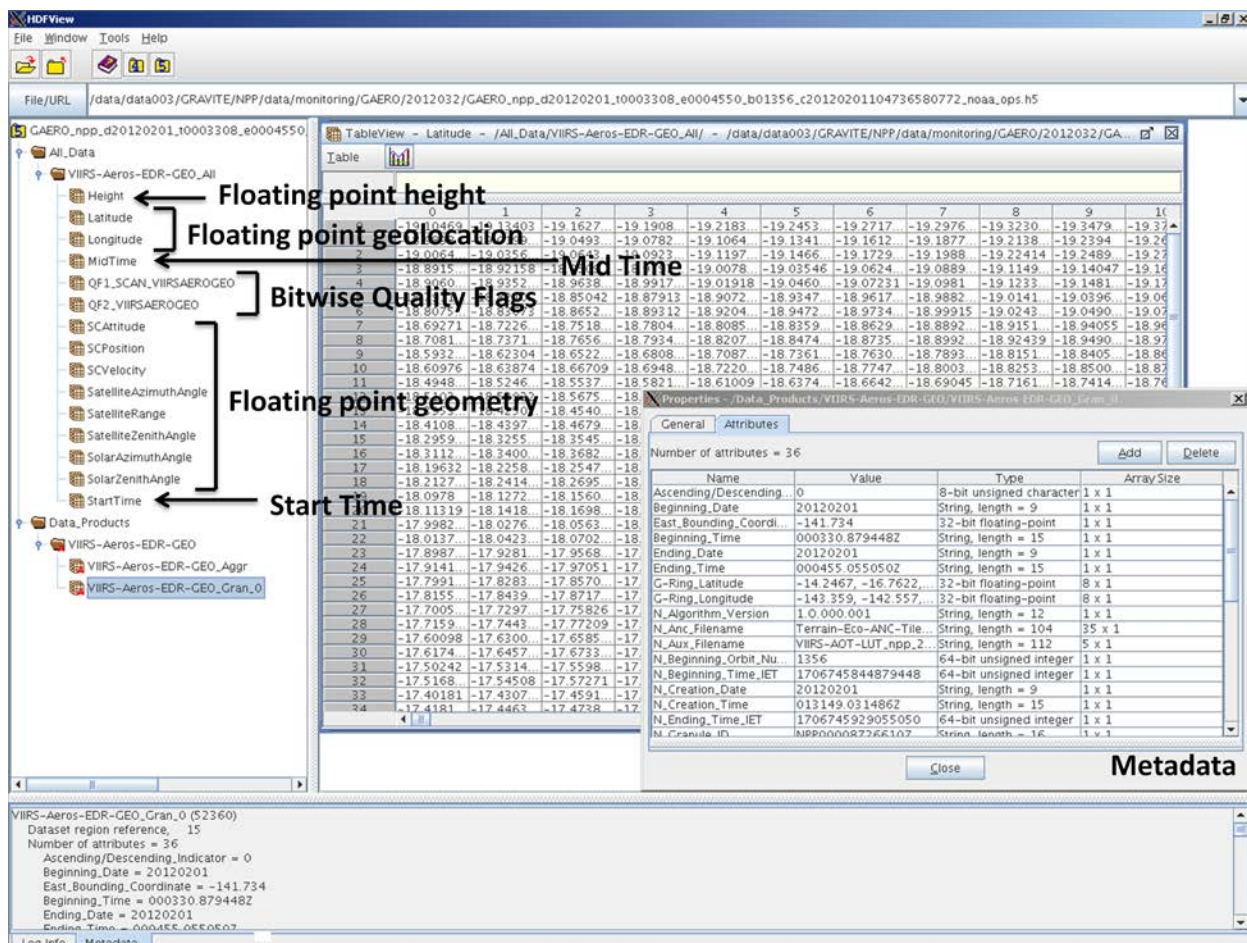


Figure 5. Aerosol Geolocation File opened in HDFView to examine details of data structures and metadata.

7.4 Suspended Matter EDR

The Suspended Matter EDR contains the suspended matter type (see Table 3) in 8-bit integer format and the smoke concentration in 16-bit integer format with the corresponding scale and offset for floating point conversion. All data in this file is at the pixel resolution (~750 m at nadir). There are also numerous 8-bit integer quality flags (described in more detail in Appendix A and also in the Aerosol Product OAD). The Suspended Matter EDR requires a corresponding terrain-corrected M-Band pixel-level geolocation for analysis. To match a Suspended Matter EDR to its corresponding geolocation file, ensure that the date, start time, end time, and orbit number in each filename are identical. For example,

GMTCO_npp_d20120626_t0804087_e0805328_b03433_c20120626103033053917_noaa_ops.h5
is the corresponding geolocation file to the Suspended Matter EDR file

VSUMO_npp_d20120626_t0804087_e0805328_b03433_c20120626143251807592_noaa_ops.h5

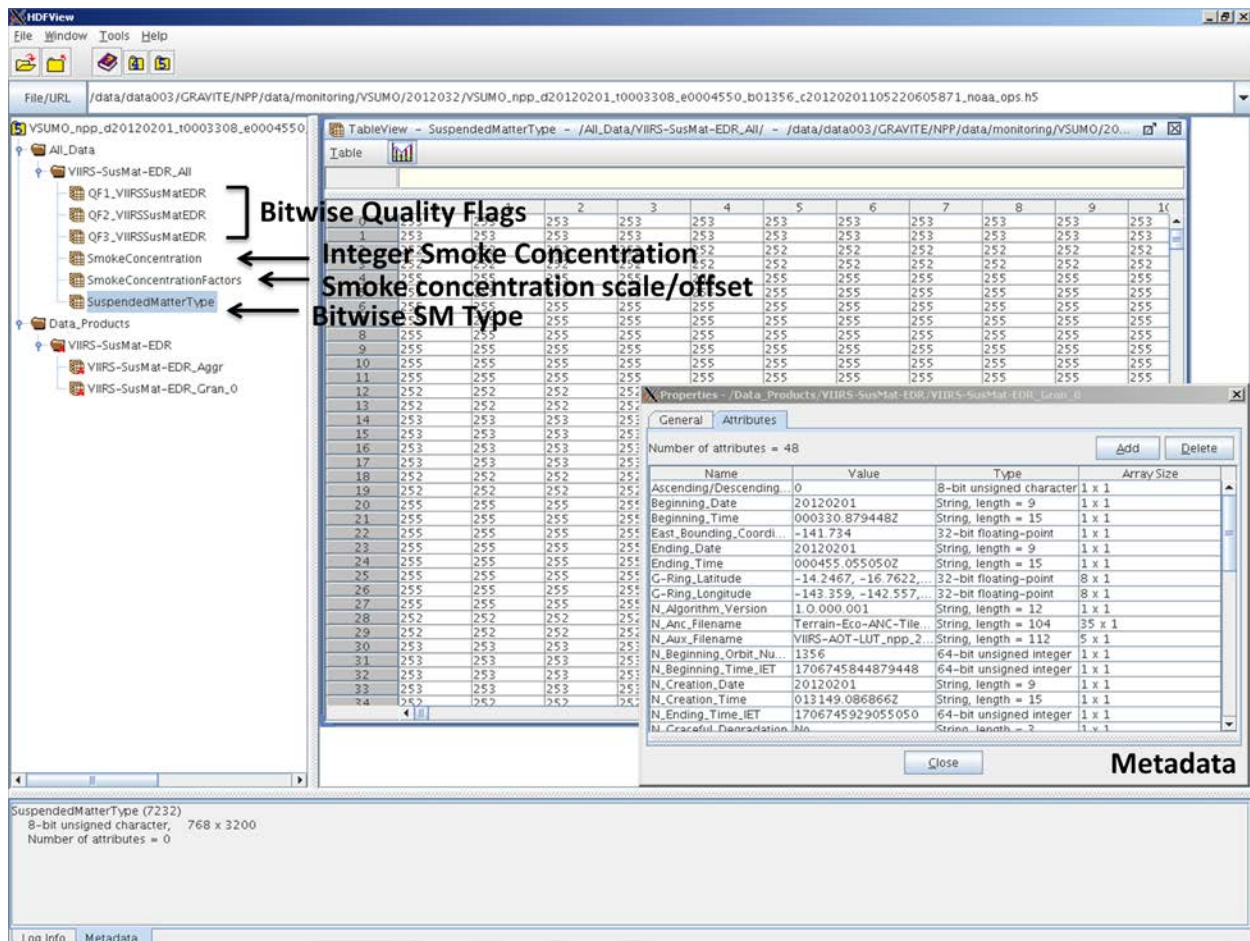


Figure 6. Suspended Matter EDR File opened in HDFView to examine details of data structures and metadata.

7.5 M-Band Terrain-Corrected Geolocation

Although it is not an output product of the aerosol algorithm, the M-Band pixel-level terrain-corrected geolocation product (GMTCO) is required for use with the Aerosol IP and the Suspended Matter EDR products. The file contains geolocation information, overpass time and satellite geometry at the M-Band pixel resolution (~750 m at nadir). Note that the start and mid times are expressed in milliseconds after the launch basetime (1698019234000000).

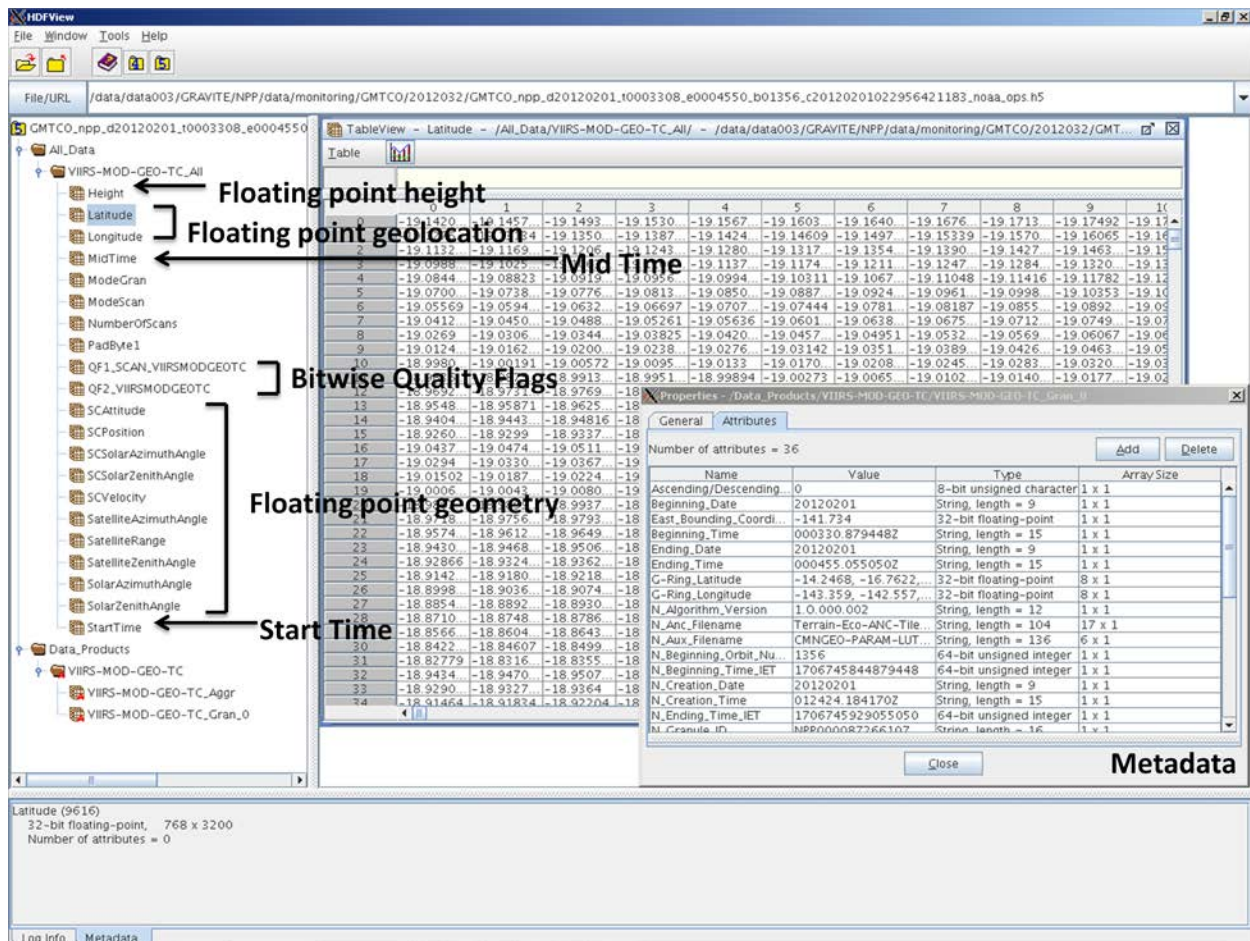


Figure 7. M-Band Terrain-Corrected Geolocation File opened in HDFView to examine details of data structures and metadata.

8. Known Issues to Date

The VIIRS Aerosol team has identified the following data quality problems that the user should be aware of:

- Artificially high AOT and APSP in the snow melt region of the Northern Hemisphere during the Spring thaw.
- Low AOT bias over ocean in dust outflow regions.
- Proportion of AOT attributed to small particles is too high over ocean.
- There is no skill in retrieving APSP information over land.
- Overabundance of smoke, and not enough dust in Suspended Matter product.
- Overabundance of ephemeral water over bright surfaces (though no retrieval in either case).

- There are no retrievals over inland water bodies.
- AOT is reported in the range [0.0-2.0]. In heavy aerosol regions (dust and smoke plumes), the pixel-level AOT is often out of range and is therefore excluded from aggregation and the EDR product.
- An inadvertent error introduced in the operational aerosol code resulted in significantly degraded aerosol EDRs for the following timeframe, invalidating the aerosol beta maturity results for the period: 10/15/2012 to 11/27/2012. Users should be aware that within this timeframe, AOT values were retrieved for confidently cloudy areas (as determined by the VIIRS cloud mask) where there should not have been retrievals, leading to increased AOT values and significantly degraded products.

The VIIRS Aerosol team strongly recommends that the following quality flags be applied:

- Use only products that are flagged as High (QF = 3) or Medium (QF = 2) quality for Aerosol EDR, and High (QF=0) for Aerosol IP.

9. Additional Documentation

9.1 Common Data Format Control Book (CDFCB)

The CDFCB documents provide in depth technical information about the NPP data products. They are available publically at <http://npp.gsfc.nasa.gov/documents.html>. A summary of the contents are below.

Table 5. Summary of CDFCB contents.

| | |
|--------------------|--|
| Volume I | Overview |
| Volume II | RDR Formats |
| Volume III | SDR/TDR Formats |
| Volume IV | EDR/IP/ARP and Geolocation Formats |
| Volume V | Metadata |
| Volume VI | Ancillary Data, Auxiliary Data, Messages and Reports |
| Volume VII | Downlink Formats (Application Packets) |
| Volume VIII | LUT Formats |

The CDFCB sections relevant to the Aerosol Products are Volume I and Volume IV, Parts I and II.

9.2 Algorithm Theoretical Basis Document (ATBD)

The AOT/APSP and Suspended Matter ATBDs provide a description of the physical theory and mathematical background of the aerosol algorithm as well as implementation details and describes the assumptions and limitations of the scientific approach. It also identifies the VIIRS

and non-VIIRS sources for required input data. The ATBD is available publically at <http://npp.gsfc.nasa.gov/documents.html>.

9.3 Operational Algorithm Description (OAD)

The Aerosol Products OAD provides a description of the aerosol algorithm and end-user data products in computer science terms. It is available publically at <http://npp.gsfc.nasa.gov/documents.html>.

10. References

- Baker, N. (2014), VIIRS Aerosol ATBD Revision A, VIIRS aerosol optical thickness and particle size parameter algorithm theoretical basis document: 474-00049. Released January, 2014. http://npp.gsfc.nasa.gov/sciencedocuments/2014-02/474-00049_ATBD-VIIRS-AOT-APSP_A.pdf.
- Baker, N. (2011), Suspended matter ATBD: VIIRS suspended matter algorithm theoretical basis document: 474-00046. Released December, 2011. http://npp.gsfc.nasa.gov/sciencedocuments/ATBD_122011/474-00046_VIIRS_Suspended_Matter_ATBD_Rev-20110422.pdf
- Jackson, J., H. Liu, I. Laszlo, S. Kondragunta, L.A. Remer, J. Huang, H. Huang, (2013), Suomi-NPP VIIRS aerosol algorithms and data products, *J. Geophys. Res. Atmos.*, **118**, 12,673–12,689, doi:10.1002/2013JD020449.
- Liu, H., L. A. Remer, J. Huang, H.-C. Huang, S. Kondragunta, I. Laszlo, M. Oo, and J. M. Jackson (2014), Preliminary evaluation of S-NPP VIIRS aerosol optical thickness, *J. Geophys. Res. Atmos.*, **119**, 3942–3962, doi:10.1002/2013JD020360.

Appendix A: VIIRS Aerosol Products Quality Flags

A.1. IP Quality Flags

A.1.1. QF1

| Flag | Values | Bits | Conditions |
|-------------|--|------|--|
| AOT Quality | 00 = 0 = High 01 = 1 = Degraded 10 = 2 = Excluded 11 = 3 = Not Produced | 0,1 | <p>NOT PRODUCED(3):</p> <ul style="list-style-type: none"> Trimmed pixels Missing geometry inputs Solar zenith angle > 80° Missing or saturated channel reflectance <ul style="list-style-type: none"> Over land: M1, M2, M3, M5, M8, M11 Over ocean: M5, M7, M8, M10, M11 Missing ancillary model data <ul style="list-style-type: none"> Over land: precipitable water, surface air temperature, column ozone, surface pressure Over ocean: wind speed, wind direction, precipitable water, column ozone, surface pressure Probably or confident cloudy Snow/ice present Fire present Unfavorable surface: inland water or coastal Internal test <ul style="list-style-type: none"> Over land: sun glint; fire; snow/ice; ephemeral water Over ocean: sun glint; turbid water; sea ice Bright surface over land (bright pixel index $\frac{M8-M11}{M8+M11} < 0.05$ and TOA reflectance at M11 > 0.3) <p>EXCLUDED(2):</p> <ul style="list-style-type: none"> Retrieved AOT550 out of spec range [0,2] Internal test <ul style="list-style-type: none"> Missing channel reflectance or brightness temperature (M7,M9,M10,M12, M15, M16 over land; M3,M4,M15,M16 over ocean) <p>DEGRADED(1):</p> <ul style="list-style-type: none"> 65° < Solar zenith angle ≤ 80° Presence of cloud shadow ; cirrus ; adjacent pixel cloud confidence level being probably or confidently cloudy ; volcanic ash Soil dominant over land (bright pixel index ≤ 0.2) |

| | | | |
|-------------------------------|--|-----|--|
| | | | <ul style="list-style-type: none"> Retrieval residual beyond the threshold <ul style="list-style-type: none"> Minimum residual > 0.05 when AOT550 > 0.5 over land Minimum residual > 0.5 when AOT550 > 0.5 over ocean <p>HIGH(0): otherwise</p> |
| Ångström exponent Quality | 00 = 0 = High 01 = 1 = Degraded 10 = 2 = Excluded 11 = 3 = Not Produced | 2,3 | Copy from the AOT quality flag, with additional criteria: NOT PRODUCED(3): <ul style="list-style-type: none"> Non-positive AOT at channels used for AE calculation (M2 / M5 over land; M7 / M10 over ocean) EXCLUDED(2): <ul style="list-style-type: none"> Out of spec range [-1.0, 3.0] DEGRADED(1): <ul style="list-style-type: none"> Low AOT 550 (< 0.15) HIGH(0): otherwise |
| Suspended Matter Type Quality | 00 = 0 = High 01 = 1 = Degraded 10 = 2 = Excluded 11 = 3 = Not Produced | 4,5 | Copy from the AOT quality flag, with additional criteria: NOT PRODUCED(3) EXCLUDED(2): <ul style="list-style-type: none"> 0.15 < AOT550 < 0.5 DEGRADED(1) HIGH(0): <ul style="list-style-type: none"> Volcanic ash is detected. |
| Cloud Mask Quality | 00 = 0 = Poor 01 = 1 = Low 10 = 2 = Medium 11 = 3 = High | 6,7 | Copy from VIIRS cloud mask (VCM) |

A1.2. QF2

| Flag | Values | Bits | Conditions |
|---|---|------|--|
| Cloud Detection Result & Confidence Indicator | 00 = 0 = Confident Clear 01 = 1 = Probably Clear 10 = 2 = Probably Cloudy 11 = 3 = Confident Cloudy | 0,1 | Copy from VCM, with one modification on confident clear case CONF CLOUDY (3) PROB CLOUDY(2) PROB CLEAR(1) CONF CLEAR(0): <ul style="list-style-type: none"> • if the heavy aerosol flag is turned on in VCM |
| Adjacent Pixel Cloud Confidence Value | 00 = 0 = Confident Clear 01 = 1 = Probably Clear 10 = 2 = Probably Cloudy 11 = 3 = Confident Cloudy | 2,3 | Set to be the most cloudy category available from the adjacent 3x3 pixel cloud confidence flags CONF CLOUDY (3) PROB CLOUDY(2) PROB CLEAR(1) CONF CLEAR(0) |
| Land/Water Background | 000 = 0 = Desert 001 = 1 = Land (No Desert) 010 = 2 = Inland Water 011 = 3 = Sea Water 101 = 5 = Coastal 110 = 6 = Ephemeral Water | 4-6 | Copy from VCM, add a new surface type if ephemeral water is detected in the internal test over land. DESERT (0) LAND (1) INLAND WATER(2) SEA WATER (3) COASTAL (5) EPH WATER (6): <ul style="list-style-type: none"> • New type added through internal test over land |

| | | | |
|---------|-------------------|---|---|
| Bad SDR | 1 = Yes 0 = No | 7 | <p>YES(1) if channel reflectance or brightness temperature are missing :</p> <ul style="list-style-type: none"> Over land: M1,M2,M3,M5,M7,M8,M9,M11,M12, M15, M16 Over ocean: M3,M4,M5,M7,M8, M10, M11, M15, M16 <p>or one of the following bands SDR quality is poor:</p> <ul style="list-style-type: none"> Over land: M1, M2, M3, M5, M8, M11 Over ocean: M5, M7, M8, M10, M11 |
|---------|-------------------|---|---|

A.1.3. QF3

| Flag | Values | Bits | Conditions |
|---|---|------|---|
| Day/Night Flag | 00 = 0 = Day 01 = 1 = Low Sun 10 = 2 = Twilight 11 = 3 = Night | 0,1 | <p>NIGHT (3):</p> <ul style="list-style-type: none"> Solar zenith angle > 85° <p>LOW SUN (2):</p> <ul style="list-style-type: none"> 80° < Solar zenith angle ≤ 85° <p>TWILIGHT (1):</p> <ul style="list-style-type: none"> 65° < Solar zenith angle ≤ 80° <p>DAY (0):</p> <ul style="list-style-type: none"> Solar zenith angle ≤ 65° |
| Interpolation / NAAPS / Climatology Processing Used | 000 = 0 = None 001 = 1 = Interpolation only 010 = 2 = Interpolation & Climatology/NAAPS 011 = 3 = Climatology /NAAPS | 2-4 | <p>CLIMO (3):</p> <ul style="list-style-type: none"> If there is no high or degraded quality retrieval available within the searching window (41x41 pixels) Use NAAPS (if available) or climatology AOT550 only; aerosol model information is from climatology <p>INTCLIMO (2):</p> <ul style="list-style-type: none"> Ratio of the total weight of pixels with available retrievals to the total weight of all pixels within the searching window < 0.25 Combine interpolated (weighted average of high/degraded retrievals) and NAAPS/climatology AOT550; aerosol model information is from the retrieval with highest weight (if available) or climatology. <p>INT (1):</p> <ul style="list-style-type: none"> Available retrieval weight ratio ≥ 0.25 |

| | | | |
|-----------|--|-----|---|
| | | | <ul style="list-style-type: none"> Use interpolated (weighted average of high/degraded retrievals) AOT550 only; aerosol model information is from the retrieval with highest weight (if available) or climatology. <p>NOINTCLIMO (0):</p> <ul style="list-style-type: none"> High/degraded aerosol retrieval is available |
| Sun Glint | <p>000 = 0 = None</p> <p>001 = 1 = Geometry Based</p> <p>010 = 2 = Wind Speed Based</p> <p>011 = 3 = Geometry & Wind</p> <p>100 = 4 = Internal</p> <p>101 = 5 = Internal & Geometry</p> <p>110 = 6 = Internal & Wind</p> <p>111 = 7 = Internal& Geometry& Wind</p> | 5-7 | <p>First two bits are copied from VCM sunglint flag; additional internal test sets the first bit over land and third bit over ocean</p> <p>NONE (0):</p> <ul style="list-style-type: none"> No glint detected by VCM and internal test <p>GEO (1):</p> <ul style="list-style-type: none"> Detected by VCM based on geometry over ocean (glint angle < 36°) or detected by internal test over land <p>WIND (2):</p> <ul style="list-style-type: none"> Detected by VCM based on wind speed <p>GEO & WIND (3):</p> <ul style="list-style-type: none"> Detected by VCM based on geometry and wind speed <p>INT (4):</p> <ul style="list-style-type: none"> Detected by internal test over ocean <p>INT&GEO (5):</p> <ul style="list-style-type: none"> Detected by internal test over ocean Detected by VCM based on geometry <p>INT&WIND (6):</p> <ul style="list-style-type: none"> Detected by internal test over ocean Detected by VCM based on wind speed <p>INT&GEO&WIND (7):</p> <ul style="list-style-type: none"> Detected by internal test over ocean Detected by CVM based on geometry Detected by VCM based on wind speed |

A.1.4. QF4

| Flag | Values | Bits | Conditions |
|----------------------|--|------|--|
| Snow/Ice | 1 = Yes 0 = No | 0 | Set by VCM and internal test |
| Cirrus | 1 = Yes 0 = No | 1 | Set by VCM and internal test over land |
| Cloud Shadow | 1 = Yes 0 = No | 2 | Copied from VCM |
| Fire | 1 = Yes 0 = No | 3 | Set by VCM and internal test over land |
| Bright Land Pixel | 00 = 0 = Dark 01 = 1 = Soil Dominated 10 = 2 = Bright | 4,5 | BRIGHT (2): <ul style="list-style-type: none"> Bright pixel index $(\frac{M8-M11}{M8+M11}) < 0.05$ and TOA Reflectance at M11 > 0.3 SOIL (1): <ul style="list-style-type: none"> Bright pixel index ≤ 0.2 DARK (0): otherwise |
| Turbid/Shallow Water | 1 = Yes 0 = No | 6 | Set by internal test over ocean |
| Ash | 1 = Yes 0 = No | 7 | Copied from VCM |

A.1.5. QF5

| Flag | Values | Bits | Conditions |
|---------------------------------|-------------------|------|---|
| Low AOT – SM Typing Excluded | 1 = Yes 0 = No | 0 | YES (1) if $0.15 < AOT550 < 1.0$ |
| Low AOT – SM Detection Excluded | 1 = Yes 0 = No | 1 | YES (1) if $0.15 < AOT550 < 0.5$ |
| AOT Out of Spec Range | 1 = Yes 0 = No | 2 | YES (1) if retrieved $AOT550 < 0.0$ or $AOT550 > 2.0$, filled with interpolation, NAAPS, or climatology value |
| APSP Out of Spec Range | 1 = Yes 0 = No | 3 | YES (1) if $AE < -1.0$ or $AE > 3.0$ |
| Low AOT, APSP Excluded | 1 = Yes 0 = No | 4 | YES (1) if $AOT550 < 0.15$ |
| Residual Threshold Exceeded | 1 = Yes 0 = No | 5 | YES (1) if <ul style="list-style-type: none"> Minimum residual > 0.05 when $AOT550 > 0.5$ over land Minimum residual > 0.5 when $AOT550 > 0.5$ over ocean |

A.2. EDR Quality Flags

A.2.1. QF1

| Flag | Values | Bits | Conditions |
|--------------|---|------|--|
| AOT Quality | 00 = 0 = Not Produced 01 = 1 = Low 10 = 2 = Medium 11 = 3 = High | 0,1 | <p>HIGH (3):</p> <ul style="list-style-type: none"> Number of high quality pixel AOT retrievals > 16 (1/4 the total number of pixels in an aggregated horizontal cell) <p>MEDIUM (2):</p> <ul style="list-style-type: none"> Number of high quality retrievals ≤ 16 and the number of high/degraded quality retrievals ≥ 16 <p>LOW (1):</p> <ul style="list-style-type: none"> Number of high/degraded quality retrievals < 16 <p>NOT PRODUCED (0):</p> <ul style="list-style-type: none"> No high/degraded quality pixel retrievals Neither land or sea water dominant Ellipsoid fill in the geolocation Night scan Solar zenith angle > 80° |
| APSP Quality | 00 = 0 = Not Produced 01 = 1 = Low 10 = 2 = Medium 11 = 3 = High | 2,3 | <p>HIGH(3):</p> <ul style="list-style-type: none"> Number of high quality pixel APSP retrievals > 16 (1/4 the total number of pixels in an aggregated horizontal cell) <p>MEDIUM (2):</p> <ul style="list-style-type: none"> Number of high quality retrievals ≤ 16 and the number of high/degraded quality retrievals ≥ 16 <p>LOW (1):</p> <ul style="list-style-type: none"> Number of high/degraded quality retrievals < 16 <p>NOT PRODUCED (0):</p> <ul style="list-style-type: none"> No high/degraded quality pixel retrievals Neither land or sea water dominant Ellipsoid fill in the geolocation Night scan Solar zenith angle > 80° |

| | | | |
|------------------------------|--|-----|---|
| Land, Ocean, or Not Produced | 00 = 0 = Land 01 = 1 = Ocean 11 = 3 = Not Produced | 4,5 | <p>LAND (0):</p> <ul style="list-style-type: none"> Number of land/desert pixels \geq half of the number of total non-trimmed pixels within the 8x8 horizontal cell <p>OCEAN (1):</p> <ul style="list-style-type: none"> Number of sea water pixels $>$ half of the number of total non-trimmed pixels within the 8x8 horizontal cell <p>NOT PRODUCED (3): otherwise</p> |
| AOT out of Spec Range | 1 = Yes 0 = No | 6 | YES (1) if any pixel AOT550 in the 8x8 horizontal cell is out of spec range (0.0-2.0) and EDR AOT quality is not high |
| APSP out of Spec Range | 1 = Yes 0 = No | 7 | YES (1) if any pixel AE in the 8x8 horizontal cell is out of spec range (-1.0-3.0) and EDR AOT quality is not high |

A.2.2. QF2

| Flag | Values | Bits | Conditions |
|------------------------|-------------------|------|---|
| Cloud Contamination | 1 = Yes 0 = No | 0 | YES (1) if any valid pixel* in the 8x8 horizontal cell is not confidently clear (A.1.2) and EDR AOT quality is not high |
| Cloud adjacent to cell | 1 = Yes 0 = No | 1 | YES (1) if any valid pixel in the cell is flagged for probably or confidently adjacently cloudy (A.1.2) and EDR AOT quality is not high |
| Cirrus Contamination | 1 = Yes 0 = No | 2 | YES (1) if any valid pixel in the cell is flagged for cirrus (A.1.4) and EDR AOT quality is not high |
| Bad SDR | 1 = Yes 0 = No | 3 | YES (1) if any non-trimmed pixel in the cell is flagged for bad SDR (A.1.2) and EDR AOT quality is not high |
| Sunglint | 1 = Yes 0 = No | 4 | YES (1) if any pixel in the cell is flagged for sunglint (A.1.3) and EDR AOT quality is not high |
| Cloud Shadow | 1 = Yes 0 = No | 5 | YES (1) if any valid pixel in the cell is flagged for cloud shadow (A.1.4) and EDR AOT quality is not high |
| Snow/Ice | 1 = Yes 0 = No | 6 | YES (1) if any valid pixel in the cell is flagged for snow/ice (A.1.4) and EDR AOT quality is not high |
| Fire | 1 = Yes 0 = No | 7 | YES (1) if any valid pixel in the cell is flagged for fire (A.1.4) and EDR AOT quality is not high |

*valid pixel refers to a non-trimmed pixel with the right surface type (i.e., land/desert pixel for land EDR; sea water pixel for ocean EDR)

A.2.3. QF3

| Flag | Values | Bits | Conditions |
|---|-------------------|------|--|
| Low sun, degraded | 1 = Yes 0 = No | 0 | YES (1) if any non-trimmed pixel in the cell is flagged for “Low sun, Degraded” (IP Day/Night Flag in A.1.3) and EDR AOT quality is not high |
| Low sun, excluded | 1 = Yes 0 = No | 1 | YES (1) if any non-trimmed pixel in the cell is flagged for “Twilight, Excluded” or “Night” (IP Day/Night Flag in A.1.3) and EDR AOT quality is not high |
| Bright surface (land)/Shallow or Turbid Water (ocean) | 1 = Yes 0 = No | 2 | YES (1) if any valid pixel in the cell is flagged for bright pixel (land) or turbid/shallow water (ocean) (A.1.4) and EDR AOT quality is not high |
| Low AOT, APSP Excluded | 1 = Yes 0 = No | 3 | YES (1) if any valid pixel in the cell is flagged for “low AOT - APSP Excluded” (A.1.5) and EDR AOT quality is not high |

A.2.4. QF4

| Flag | Values | Bits | Notes |
|---------------------------------|---|------|---|
| Land Model Aerosol Index (land) | 000 = 0 = Dust 001 = 1 = Smoke, High Absorption 010 = 2 = Smoke, Low Absorption 011 = 3 = Urban, Clean 100 = 4 = Urban, Polluted 111=7=NA (not land) | 0-2 | Selects the dominant aerosol model (largest number of pixels involved in the EDR aggregation) over land; See AOT ATBD for all model details |

A.2.5. QF5

| Flag | Values | Bits | Notes |
|----------------------------------|---|------|---|
| Small Mode Aerosol Model (ocean) | 000 = 0 = Fine mode 1 001 = 1 = Fine mode 2 010 = 2 = Fine mode 3 011 = 3 = Fine mode 4 111 = 7 = NA (not ocean) | 0-2 | Selects the dominant small mode aerosol model (largest number of pixels involved in the EDR aggregation) over ocean; See AOT ATBD for all model details |
| Large Mode Aerosol Model (ocean) | 000 = 0 = Coarse mode 1 001 = 1 = Coarse mode 2 010 = 2 = Coarse mode 3 011 = 3 = Coarse mode 4 100 = 4 = Coarse mode 5 111 = 7 = NA (not ocean) | 3-5 | Selects the dominant large mode aerosol model (largest number of pixels involved in the EDR aggregation) over ocean; See AOT ATBD for all model details |

A.3. Suspended Matter Quality Flags

A.3.1. QF1

| Flag | Values | Bits | Conditions |
|--|---|------|--|
| Suspended Matter Detection Product Quality | 00 = 0 = Not Produced 01 = 1 = Low 10 = 2 = Medium 11 = 3 = High | 0,1 | <p>HIGH (3):</p> <ul style="list-style-type: none"> IP SM type quality is high <p>MEDIUM (2):</p> <ul style="list-style-type: none"> IP SM type quality is degraded <p>LOW (1):</p> <ul style="list-style-type: none"> IP SM type quality is excluded <p>NOT PRODUCED (0):</p> <ul style="list-style-type: none"> IP SM type quality is not produced |

| | | | |
|---------------------------------------|---|-----|---|
| Suspended Matter Type Product Quality | 00 = 0 = Not Produced 01 = 1 = Low 10 = 2 = Medium 11 = 3 = High | 2,3 | <p>HIGH (3):</p> <ul style="list-style-type: none"> IP SM type quality is high and "Low AOT-SM Typing Excluded" flag is not set <p>MEDIUM (2):</p> <ul style="list-style-type: none"> IP SM type quality is degraded and "Low AOT- SM Typing Excluded" is not set <p>LOW (1):</p> <ul style="list-style-type: none"> IP SM type quality is high or degraded and "Low AOT - SM Typing Excluded" is set or IP SM type quality is excluded <p>NOT PRODUCED (0):</p> <ul style="list-style-type: none"> IP SM type quality is not produced |
| Smoke Concentration Product Quality | 00 = 0 = Not Produced 01 = 1 = Low 10 = 2 = Medium 11 = 3 = High | 4,5 | <p>HIGH (3):</p> <ul style="list-style-type: none"> IP SM type quality is high and smoke concentration is not larger than the maximum threshold (1000 µg/m³) <p>MEDIUM (2):</p> <ul style="list-style-type: none"> IP SM type quality is degraded and smoke concentration is not larger than the maximum threshold (1000 µg/m³) <p>LOW (1):</p> <ul style="list-style-type: none"> IP SM type quality is high or degraded and smoke concentration is larger than the maximum threshold (1000 µg/m³) or IP SM type quality is excluded <p>NOT PRODUCED (0):</p> <ul style="list-style-type: none"> IP SM type quality is not produced |
| Land, Ocean, or Not Produced | 00 = 0 = Land 01 = 1 = Ocean 11 = 3 = Not Produced | 6,7 | <p>LAND (0):</p> <ul style="list-style-type: none"> Pixel surface type is land or desert (Land/Water Background flag in A.1.2) <p>OCEAN (1):</p> <ul style="list-style-type: none"> Pixel surface type is sea water <p>NOT PRODUCED (3):</p> <ul style="list-style-type: none"> Other surface types |

A.3.2. QF2

| Flag | Values | Bits | Conditions |
|------------------------|-------------------|------|---|
| Cloud Contamination | 1 = Yes 0 = No | 0 | YES (1) if IP "Cloud Detection Result & Confidence Indicator" flag is not confident clear or probably clear (A.1.2) |
| Cloud adjacent to cell | 1 = Yes 0 = No | 1 | YES (1) if IP "Adjacent pixel Cloud Confidence Value" flag is confident or probably cloudy (A.1.2) |
| Cirrus Contamination | 1 = Yes 0 = No | 2 | Copied from IP "Cirrus" flag (A.1.4) |
| Bad SDR | 1 = Yes 0 = No | 3 | Copied from IP "Bad SDR" flag (A.1.2) |
| Sunglint | 1 = Yes 0 = No | 4 | YES (1) if IP "Sun Glint" flag is not zero (A.1.3) |
| Cloud Shadow | 1 = Yes 0 = No | 5 | Copied from IP "Cloud Shadow" flag (A.1.4) |
| Snow/Ice | 1 = Yes 0 = No | 6 | Copied from IP "Snow/Ice" flag (A.1.4) |
| Fire | 1 = Yes 0 = No | 7 | Copied from IP "Fire" flag (A.1.4) |

A.3.3. QF3

| Flag | Values | Bits | Conditions |
|---|-------------------|------|---|
| Smoke Concentration out of Expected Range | 1 = Yes 0 = No | 0 | YES (1) if pixel smoke concentration is beyond the expected range (0-1000 $\mu\text{g}/\text{m}^3$) |
| Excluded SM typing | 1 = Yes 0 = No | 1 | Copied from the IP "Low AOT - SM Typing Excluded" Quality Flag (A.1.5) |
| Excluded SM Detection | 1 = Yes 0 = No | 2 | Copied from the IP "Low AOT - SM Detection Excluded" Quality Flag (A.1.5) |
| Low Sun | 1 = Yes 0 = No | 3 | YES (1) if IP "Day/Night Flag" is set to "Low Sun, Degraded" ($65^\circ < \text{Solar zenith angle} \leq 80^\circ$) |
| Bright Surface/Shallow or Turbid Water | 1 = Yes 0 = No | 4 | YES (1) if IP "Bright Pixel" flag is not zero or "Turbid/Shallow Water" flag is set (A.1.4) |

Appendix B: Helpful Tools for Working with VIIRS Files

B.1 HDF5 Tools

For users unaccustomed to working with HDF5 formatted files, the HDF Group has a tutorial with example programs and available tools (including HDFView) on their website at <http://www.hdfgroup.org/HDF5/>.

B.2 IDL Tools

IDL has a built-in library of commands for HDF5 files. Documentation can be found online at http://idlastro.gsfc.nasa.gov/idl_html_help/Hierarchical_Data_Format_-_HDF5.html or using IDL Help.

Also, Michael Galloy has written a particularly helpful IDL program to read HDF5 arrays into IDL. It is available at http://michaelgalloy.com/lib/hdf5/mg_h5_getdata.html. Example usages for reading in fields from the VIIRS Aerosol EDR and Aerosol Geolocation is below.

Extracts Latitude and Longitude from Aerosol Geolocation:

```
IDL> Latitude = mg_h5_getdata(GAERO_File, $
                               '/All_Data/VIIRS-Aeros-EDR-GEO_All/Latitude')
IDL> Longitude = mg_h5_getdata(GAERO_File, $
                               '/All_Data/VIIRS-Aeros-EDR-GEO_All/Longitude')
```

Extracts Day/Night Metadata from Aerosol Geolocation:

```
IDL> DayNight = mg_h5_getdata(GAERO_File, $
                               '/Data_Products/VIIRS-Aeros-EDR-GEO/VIIRS-Aeros-EDR-
                               GEO_Gran_0.N_Day_Night_Flag')
```

The Day/Night Metadata is copied from SDR metadata. The definition of day/night here is different from the definition of the pixel level day/night flag in IP AOT product.

Extracts AOT and AOT Scale and Offset from Aerosol EDR and converts to floating point numbers:

```
IDL> AOT = mg_h5_getdata(VA0000_File, $
                               '/All_Data/VIIRS-Aeros-EDR_All/AerosolOpticalDepth_at_550nm')
IDL> AOT_Factors = mg_h5_getdata(VA0000_File, $
                               '/All_Data/VIIRS-Aeros-EDR_All/AerosolOpticalDepthFactors')
IDL> AOT_float = (AOT * AOT_Factors[0]) + AOT_Factors[1]
```

B.3 Extract Individual Quality Flag Value

[Back to Table of Contents](#)

Each individual quality flag is described in a single row in the tables in Appendix A. Flag values need to be extracted from the output 8-bit QFs (QF1, QF2, etc.) based on the corresponding bit positions, which are listed in the table column “Bits” and numbered from right (least significant bit) to the left (most significant bit), i.e., the rightmost bit position is numbered 0.

Example 1:

The EDR AOT quality is saved in the bit 0 and 1 of the output QF1 (A.2.1). To get the AOT quality (0: Not Produced; 1: Low; 2: Medium; 3: High) of the EDR cell [x,y], following IDL command can be used:

```
IDL> flag = QF1[x,y] AND 3
```

Example 2:

The IP “Interpolation/NAAPS/Climatology Processing Used” flag is saved in the bit 2, 3 and 4 of the output QF3 (A.1.3). To check whether the IP AOT is from retrieval (flag value of 0 indicating no filling with interpolation/NAPPS/climatology) of the pixel [x,y], following IDL command can be used:

```
IDL> flag = ISHFT(QF3[x,y], -2) AND 7
```

```
IDL> IF (flag EQ 0) THEN PRINT, ‘Not filled value’
```

The corresponding C code used to extract this flag value is:

```
flag = (QF[x][y] >> 2) & 0x07;
```