

# QWI Explorer

qwiexplorer.ces.census.gov

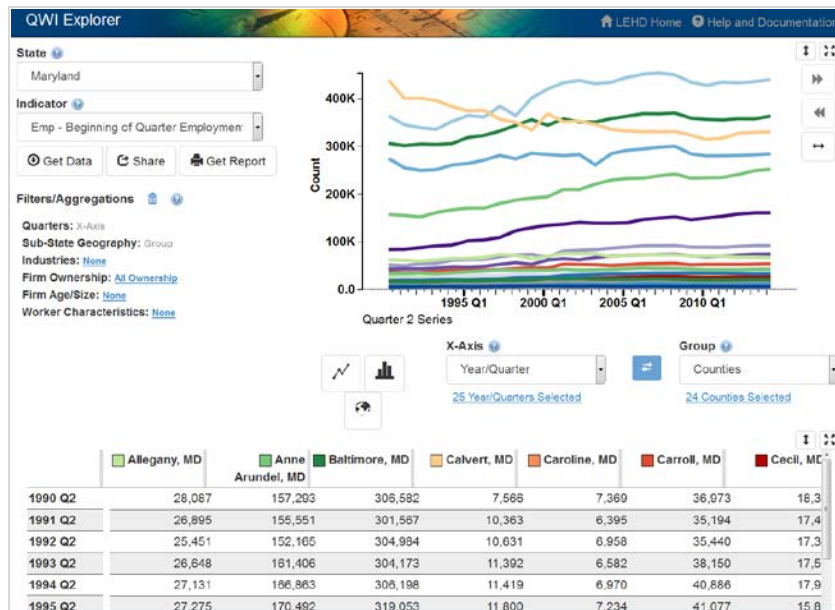
## Local Employment Dynamics

[QWI Explorer](#) is a new, web-based analysis tool that enables comprehensive access to the full depth and breadth of the Quarterly Workforce Indicators (QWI) dataset. Through charts, maps and interactive tables, users can compare, rank and aggregate QWIs across time, geography, and/or firm and worker characteristics on the fly.

QWI Explorer reveals the QWI dataset through a simple table and chart/map interface. The application's intuitive dashboard allows for the construction of pivot tables to compare and rank laborforce indicators such as employment, job creation/destruction, wages, and hires across a wide range of firm and worker characteristics.

Potential analyses include a longitudinal look at wages by worker sex and age across counties, ranking job creation

rates of young firms across NAICS industry groups, and comparing hiring levels by worker race and education levels across a selection of Metropolitan Areas. Visualize your analyses through line charts, bar charts, or thematic maps. The data exploration possibilities are endless!



## QWI Explorer Highlights

- **Comprehensive Data Coverage** – Access all 32 workforce indicators, all available years/quarters, all firm and worker characteristics, and all geographic tabulation areas (national, state, county, metro/micro areas, and workforce investment areas).
- **Flexible Table and Chart/Map Interface** – Explore the many detailed interactions between firms and workers by building the exact table, line chart, bar chart, or thematic map required to analyze – and inspire subsequent – laborforce questions.
- **Interactive Visualizations and Comprehensive Outputs** – The synchronized table and chart/map interact to provide multiple visual perspectives on the data. Visualizations, data tables, and reports are simple to download and share.
- **Easy-To-Use Documentation** – [Online documentation](#), including FAQs and walkthroughs, is available through the LEHD website at [lehd.ces.census.gov](http://lehd.ces.census.gov).

Contact: [CES.QWI.Feedback@census.gov](mailto:CES.QWI.Feedback@census.gov)