

# Nevada: 2010

---

*Population and Housing Unit Counts*

## **2010 Census of Population and Housing**

Issued August 2012

CPH-2-30



U.S. Department of Commerce  
Economics and Statistics Administration  
U.S. CENSUS BUREAU  
[census.gov](http://census.gov)

United States<sup>®</sup>  
**Census**  
**2010**



# Nevada: 2010

Issued August 2012

## *Population and Housing Unit Counts*

CPH-2-30



**U.S. Department of Commerce**

**Rebecca M. Blank,**  
Acting Secretary

**Rebecca M. Blank,**  
Deputy Secretary

**Economics and Statistics Administration**

**Vacant,**  
Under Secretary  
for Economic Affairs

**U.S. CENSUS BUREAU**  
**Thomas L. Mesenbourg,**  
Acting Director

SUGGESTED CITATION

U.S. Census Bureau,  
2010 Census of  
Population and Housing,  
*Population and  
Housing Unit Counts*,  
CPH-2-30, Nevada  
U.S. Government Printing Office,  
Washington, DC,  
2012



**Economics  
and Statistics  
Administration**

**Vacant,**  
Under Secretary for  
Economic Affairs



**U.S. CENSUS BUREAU**

**Thomas L. Mesenbourg,**  
Acting Director

**Nancy A. Potok,**  
Deputy Director and  
Chief Operating Officer

**Vacant,**  
Associate Director  
for Demographic Programs

**Enrique J. Lamas,**  
Chief, Population Division

# CONTENTS

List of Statistical Tables . . . . .	v
How to Use This Census Report . . . . .	I-1
Table Finding Guide . . . . .	II-1
User Notes . . . . .	III-1
Crosswalk of Urban Areas and Places: 2010 . . . . .	IV-1
Statistical Tables . . . . .	1
Appendixes	
A Geographic Terms and Concepts . . . . .	*
B Definitions of Subject Characteristics . . . . .	*
C Data Collection and Processing Procedures . . . . .	*
D Questionnaire . . . . .	*
E Maps . . . . .	E-1
F Operational Overview and Accuracy of the Data . . . . .	*
G Residence Rule and Residence Situations for the 2010 Census of the United States . . . . .	*
H Acknowledgments . . . . .	*

\*Appendix may be found in the separate volume, CPH-2-A, *Population and Housing Unit Counts, Selected Appendixes*, in print and on the Internet at <[www.census.gov/prod/cen2010/cph-2-a.pdf](http://www.census.gov/prod/cen2010/cph-2-a.pdf)>.



LIST OF  
STATISTICAL  
TABLES

Table no.	Title	Page
<b>1.</b>	<b>Population: Earliest Census to 2010; and Housing Units: 1950 to 2010</b> . . . . . State, Urban and Rural	1
<b>2.</b>	<b>Population, Housing Units, and Land Area by Urban and Rural and Size of Urban Area: 2010</b> . . . . . State, Urban and Rural, Size of Urban Area [Population]	2
<b>3.</b>	<b>Population by Urban and Rural and Size of Place: 2010</b> . . . State, Size of Place [Population]	4
<b>4.</b>	<b>Population and Housing Units: 1970 to 2010</b> . . . . . State, County/County Equivalent	6
<b>5.</b>	<b>Population, Housing Units, Land Area, and Density: 2010; and Percent Change: 1980 to 2010</b> . . . . . State, County/County Equivalent	7
<b>6.</b>	<b>Rank of Counties by Percent Change in Population: 2000 to 2010</b> . . . . . County/County Equivalent	8
<b>7.</b>	<b>Population by Urban and Rural: 2010</b> . . . . . State, County/County Equivalent	9
<b>8.</b>	<b>Population and Housing Units: 1990 to 2010; and Area Measurements and Density: 2010</b> . . . . . State, County/County Equivalent, County Subdivision, Place	10
<b>9.</b>	<b>Population and Housing Units: 1990 to 2010; and Area Measurements and Density: 2010</b> . . . . . State, Place and [in Selected States] County Subdivision	14
<b>10.</b>	<b>Rank by 2010 Population and Housing Units: 2000 and 2010</b> . . . . . Place [2,500 or More Population]	18
<b>11.</b>	<b>Rank of Places by Percent Change in Population: 2000 to 2010</b> . . . . . Place [2,500 or More Population]	19
<b>12.</b>	<b>Population and Housing Units for Urban Areas: 2010</b> . . . . . State, Urbanized Area, Urban Cluster	20





# How to Use This Census Report

---

## CONTENTS

	Page
Introduction .....	I-1
How to Find Geographic Areas and Subject Matter Data .....	I-2
How to Use the Statistical Tables .....	I-2
Graphics .....	I-5
User Notes .....	I-5
Appendixes .....	I-5

## INTRODUCTION

Data from the 2010 Census for the United States and Puerto Rico are presented in two printed report series and a single report for American Indians and Alaska Natives by tribe:

1. CPH-1, *Summary Population and Housing Characteristics*
2. CPH-2, *Population and Housing Unit Counts*
3. CPH-3, *Characteristics of American Indians and Alaska Natives by Tribe*

The data from the 2010 Census were derived from a limited number of basic questions asked of the entire population and about every housing unit. Appendix D (see *Selected Appendixes* report at <[www.census.gov/prod/cen2010/cph-2-a.pdf](http://www.census.gov/prod/cen2010/cph-2-a.pdf)>) presents a facsimile of the questionnaire pages used to collect the data included in this report. Note that the "long form" data included in previous censuses are not included in the 2010 Census.

The CPH-1, *Summary Population and Housing Characteristics*, report series provides data based on age, Hispanic or Latino origin, household relationship, race, sex, tenure (owner- or renter-occupied), and vacancy characteristics. Land area measurements and population density also are provided. This series is similar to the Census 2000 PHC-1 series.

The CPH-2, *Population and Housing Unit Counts*, report series provides 2010 Census and historical comparisons of the population and housing unit counts. It also provides area measurements and density. The user notes section documents geographic changes over the past decade. This series is similar to the Census 2000 PHC-3 series.

In each series, there is one report for each state, the District of Columbia, and Puerto Rico, plus a United States summary report. Many tables in the United States summary reports include data for Puerto Rico.

The CPH-3, *Characteristics of American Indians and Alaska Natives by Tribe*, report provides population and housing information for selected American Indian and Alaska Native tribes. This report is similar to the Census 2000 PHC-5 report. This is a single report covering the entire United States.

## HOW TO FIND GEOGRAPHIC AREAS AND SUBJECT MATTER DATA

This report includes a table finding guide to assist the user in locating those statistical tables that contain the desired data. The table finding guide lists alphabetically, by geographic area, the subjects shown in this report. To determine which tables in this report show data for a particular topic, find the subject in the left-hand column of the table finding guide and then look across the columns using the headings at the top for the desired type of geographic area. Figure I-1 is an example of a table finding guide.

The table finding guide does not include cross-classification of subject-matter items. Additional information to locate data within specific reports is provided in the headnote at the top of the table finding guide and in the footnotes at the bottom of the guide.

Figure I-1.

### Table Finding Guide

#### SUBJECTS BY TYPE OF GEOGRAPHIC AREA AND TABLE NUMBER

The types of geographic areas covered in this report are shown on the side, and subjects are shown at the top. See CPH-2-A, *Population and Housing Unit Counts, Selected Appendixes* (<[www.census.gov/prod/cen2010/cph-2-a.pdf](http://www.census.gov/prod/cen2010/cph-2-a.pdf)>), for a description of area classifications (Appendix A) and for definitions and explanations of subject characteristics (Appendix B).

Geographic area	Population			Housing units			Area measurement		Average per square mile of land (density)		Number of places
	2010 Census	Previous censuses	Change from previous census	2010 Census	Previous censuses	Change from previous census	Total area	Land area	Population	Housing units	
<b>THE STATE<sup>1</sup></b>											
Total . . . . .	1,2,3,4,5,7,8,9,12	1,4,8,9	1,5,9	1,2,4,5,8,9,12	1,4,8,9	1,5,9	8,9	2,5,8,9	5,8,9	5,8,9	1,3
Urban and rural . . . . .	1,2,3,7,12	1	1	1,2,12	1	1	—	2	—	—	3
Current urban definition . . . . .	1,2,7,12	1	1	1,2,12	1	1	—	2	—	—	—
1950–90 urban definition . . . . .	1	1	1	1	1	1	—	—	—	—	—
Urban and rural by size of place . . . . .	3	—	—	—	—	—	—	—	—	—	3
In urbanized area and in urban cluster . . . . .	2,7,12	—	—	2,12	—	—	—	2	—	—	—
Size of urban area . . . . .	2	—	—	2	—	—	—	2	—	—	—
In place and not in place . . . . .	3,7	—	—	—	—	—	—	—	—	—	3
<b>COUNTY<sup>2</sup></b>											
Total . . . . .	4,5,6,8	4,6,8	5,6	4,8	4,8	5	8	5,8	5,8	5,8	—
Urban and rural . . . . .	7	—	—	—	—	—	—	—	—	—	—
By percent change rank . . . . .	6	6	6	—	—	—	—	—	—	—	—
<b>COUNTY SUBDIVISION<sup>3</sup></b>											
By county . . . . .	8	8	—	8	8	—	8	8	8	8	—
Alphabetically . . . . .	9	9	9	9	9	9	9	9	9	9	—
By 2010 rank . . . . .	10a	10a	—	10a	10a	—	—	—	—	—	—
By percent change rank . . . . .	11a	11a	11a	—	—	—	—	—	—	—	—
<b>PLACE</b>											
By county and county subdivision . . . . .	8	8	—	8	8	—	8	8	8	8	—
Alphabetically . . . . .	9	9	9	9	9	9	9	9	9	9	—
By 2010 rank . . . . .	10	10	—	10	10	—	—	—	—	—	—
By percent change rank . . . . .	11	11	11	—	—	—	—	—	—	—	—
<b>URBAN AREA</b>											
Urbanized area and urban cluster . . . . .	12	—	12	—	—	—	—	—	—	—	—

<sup>1</sup> State, District of Columbia, or Puerto Rico.

<sup>2</sup> Parish in Louisiana; city and borough, municipality, borough, or census area in Alaska; and municipio in Puerto Rico; in Maryland, Missouri, Nevada, and Virginia, one or more cities are independent of counties and are treated as statistical equivalents of counties; the entire District of Columbia, which has no counties, is treated as a county equivalent.

<sup>3</sup> County subdivisions within the state are shown alphabetically with places for the following 12 states: Connecticut, Maine, Massachusetts, Michigan, Minnesota, New Hampshire, New Jersey, New York, Pennsylvania, Rhode Island, Vermont, and Wisconsin.

## HOW TO USE THE STATISTICAL TABLES

### Parts of a Statistical Table

The census data included in printed reports are arranged in tables. Each table includes four major parts: (1) heading, (2) boxhead, (3) stub, and (4) data field. A typical census report table is illustrated in Figure I-2.

The heading consists of the table number, title, and headnote. The table number indicates the position of the table within the report, while the title is a brief statement indicating the subjects and time reference of the data presented in the table. The headnote is enclosed in brackets and is located under the title. It contains statements that qualify, explain, or provide information pertaining to the entire table.

Figure I-2.  
PARTS OF A STATISTICAL TABLE

Table number and title		Headnote										Column head				
Heading		Spanner										Boxhead				
Stubhead		Race in combination with one or more other races										Race alone or in combination with one or more other races				
Sidehead		White	Black or African American	American Indian and Alaska Native	Asian	Native Hawaiian and Other Pacific Islander	Some Other Race	White	Black or African American	American Indian and Alaska Native	Asian	Native Hawaiian and Other Pacific Islander	Some Other Race			
20 Delaware		18,775	14,109	5,718	5,152	816	5,026	637,392	205,923	9,899	33,701	1,216	35,545			
COUNTY																
Kent County.....		4,523	3,595	1,558	1,215	215	838	114,522	42,508	2,601	4,521	306	4,073			
New Castle County.....		10,502	7,949	2,895	3,333	409	3,171	363,457	135,735	4,469	25,633	568	22,286			
Sussex County.....		3,750	2,565	1,265	604	192	1,017	159,413	27,680	2,829	2,547	342	9,186			
PLACE																
Arden village, New Castle County.....		3	1	1	2	0	1	428	6	3	3	0	3			
Ardenzroff village, New Castle County.....		1	0	0	1	0	0	199	21	0	12	0	0			
Ardenzroff village, New Castle County.....		8	2	0	5	0	2	256	4	0	11	0	2			
Bear CDP, New Castle County.....		522	447	149	132	11	201	10,298	7,129	211	944	16	1,527			
Belkfonte town, New Castle County.....		13	5	2	5	2	7	1,096	80	4	19	3	9			
Bethany Beach town, Sussex County.....		5	3	1	1	0	0	1,054	5	1	5	0	0			
Bethel town, Sussex County.....		2	2	0	0	0	0	164	8	0	1	0	0			
Blades town, Sussex County.....		45	46	6	0	3	7	802	391	15	10	3	74			
Bowen town, Kent County.....		2	1	1	1	0	1	218	7	4	5	0	5			
Bridgeville town, Sussex County.....		62	51	16	8	5	12	1,391	545	19	14	7	152			
Bridleside CDP, New Castle County.....		445	325	118	80	35	135	10,218	3,070	172	529	37	912			
Camden town, Kent County.....		124	104	49	52	0	13	2,413	920	60	180	1	63			
Cheswold town, Kent County.....		50	32	32	12	10	13	793	497	68	46	10	47			
Claymont CDP, New Castle County.....		149	112	34	32	5	25	5,435	2,344	62	347	14	240			
Clayton town.....		73	73	21	16	1	13	2,105	791	27	33	1	63			
Kent County (part).....		73	73	21	16	1	13	2,105	791	27	33	1	63			
New Castle County (part).....		0	0	0	0	0	0	0	0	0	0	0	0			
Dagsboro town, Sussex County.....		17	16	4	3	0	2	706	69	12	3	0	36			
Delaware city, New Castle County.....		64	46	16	5	0	5	1,473	231	17	22	0	20			
Delmar town, Sussex County.....		75	67	21	7	1	4	1,281	344	27	18	1	19			
Dewey Beach town, Sussex County.....		4	3	0	0	1	0	318	12	1	1	0	0			
Dover city, Kent County.....		1,053	1,097	375	328	52	195	18,446	16,312	571	1,310	75	960			
Dover Base Housing CDP, Kent County.....		216	122	47	85	23	37	2,699	580	55	163	32	200			
Edgemood CDP, New Castle County.....		99	115	29	9	1	16	3,499	2,089	58	72	1	99			
Ellendale town, Sussex County.....		8	13	6	3	2	0	242	125	6	5	4	15			
Elsmore town, New Castle County.....		165	123	44	33	0	116	4,435	925	92	139	0	786			
Farmington town, Kent County.....		0	0	0	0	0	0	110	0	0	0	0	0			
Felton town, Kent County.....		48	38	12	3	0	12	998	290	20	25	1	23			
Fernwick Island town, Sussex County.....		1	0	1	0	0	0	371	2	1	3	0	3			
Frankford town, Sussex County.....		10	11	4	0	2	5	407	249	4	11	2	190			
Frederica town, Kent County.....		32	33	14	2	0	7	558	183	14	9	1	57			
Georgetown town, Sussex County.....		200	85	53	8	2	133	3,191	1,018	328	78	11	2,018			
Glasgow CDP, New Castle County.....		312	276	71	121	6	67	9,505	3,862	119	937	10	309			
Greenville CDP, New Castle County.....		24	10	3	22	0	6	2,018	121	3	190	0	28			
Greenwood town, Sussex County.....		28	12	12	5	0	0	718	211	17	11	0	48			
Harrington city, Kent County.....		120	102	55	15	10	15	2,568	931	76	43	14	94			
Hartly town, Kent County.....		0	0	0	0	0	0	72	0	1	0	1	0			
Henrieville Acres town, Sussex County.....		0	0	0	0	0	0	118	3	0	1	0	0			
Highland Acres CDP, Kent County.....		96	71	24	44	7	14	2,725	579	45	189	10	45			
Hockessin CDP, New Castle County.....		188	38	38	132	8	31	11,712	434	59	1,429	17	102			
Houston town, Kent County.....		2	2	0	1	0	1	346	22	2	4	0	3			
Kent Acres CDP, Kent County.....		51	38	17	17	1	8	1,302	505	29	65	1	55			
Kenton town, Kent County.....		6	6	2	0	0	0	242	12	2	0	0	13			
Laurel town, Sussex County.....		135	155	33	38	15	37	1,889	1,668	75	72	33	188			
Leipsic town, Kent County.....		6	6	0	0	0	0	170	9	4	0	0	6			
Lewis city, Sussex County.....		34	26	12	4	1	1	2,802	237	27	14	3	10			
Little Creek town, Kent County.....		5	1	4	0	0	0	214	6	7	1	0	1			
Long Neck CDP, Sussex County.....		6	3	5	0	0	1	1,896	44	10	7	0	31			
Magnolia town, Kent County.....		2	2	4	2	0	1	182	28	14	3	0	6			
Middletown town, New Castle County.....		457	405	107	132	19	131	12,145	5,772	143	841	27	597			
Milford.....		189	176	65	27	23	60	4,404	2,304	115	137	45	838			
Kent County (part).....		93	91	24	8	8	41	1,906	1,526	53	46	13	374			
Sussex County (part).....		96	85	41	19	15	19	4,498	778	62	91	32	464			
Milkbono town, Sussex County.....		90	97	29	20	7	23	2,863	792	49	149	7	154			
Millville town, Sussex County.....		9	1	1	7	0	0	515	14	1	11	0	12			
Milton town, Sussex County.....		75	76	20	3	0	12	2,027	497	38	18	1	92			
Newark city, New Castle County.....		626	318	141	325	31	112	26,532	2,412	194	2,570	41	519			
New Castle city, New Castle County.....		101	95	39	19	2	31	3,660	1,530	57	80	2	105			
Newport town, New Castle County.....		29	26	5	5	2	9	744	220	9	21	2	100			
North Star CDP, New Castle County.....		83	20	8	61	0	27	7,066	270	11	687	0	48			
Ocean View town, Sussex County.....		17	8	6	5	1	3	1,835	24	7	29	1	8			
Odessa town, New Castle County.....		12	10	4	5	0	2	334	35	4	9	0	2			

20 Delaware

State name and page number

Summary Population and Housing Characteristics  
U.S. Census Bureau, 2010 Census

Report title

The boxhead is under the heading. This portion of the table, which contains the individual column heads or captions, describes the data in each vertical column. In the boxhead of many tables, a spanner appears across and above two or more column heads or across two or more lower spanners. The purpose of a spanner is to classify or qualify items below it or separate the table into identifiable blocks in terms of major aspects of the data.

The stub is located at the left edge of the table. It includes a listing of line or row captions or descriptions. At the top of the stub is the stubhead. The stubhead is considered to be an extension of the table title and usually shows generic geographic area designations and restrictions.

---

In the stub, several features are used to help the user better understand the contents of the table. Usually, a block of data lines is preceded by a sidehead. The sidehead, similar to a spanner, describes and classifies the stub entries following it. The use of indentation in a stub indicates the relationship of one data line to another. Indented data lines represent subcategories that, in most instances, sum to a total. Occasionally in tables, it is desirable to show one or more single-line subcategories that do not sum to the total.

The data field is that part of the statistical table that contains the data. It extends from the bottom of the boxhead to the bottom of the table and from the right of the stub to the right edge of the page.

Both geographic and subject-matter terms appear in tables. It is important to read the definitions of the terms used in the tables because census terms often are defined in special ways that reflect the manner in which the questions were asked and the data were tabulated. Definitions of geographic terms are provided in Appendix A of CPH-2-A, *Population and Housing Unit Counts, Selected Appendixes* (<[www.census.gov/prod/cen2010/cph-2-a.pdf](http://www.census.gov/prod/cen2010/cph-2-a.pdf)>). Census tables often include derived measures such as medians, means, percentages, and ratios. These and other subject-matter terms are defined in Appendix B of the same report.

### **Symbols and Geographic Abbreviations**

The following symbols are used in the tables and explanations of subjects covered in 2010 Census reports:

- A dash “–” represents zero or a derived measure that rounds to less than 0.1.
- (X) means not applicable. In the 1990 and earlier decennial census reports, three dots “. . .” meant not applicable.
- (NA) means not available.
- The superscript prefix “r” indicates that a Census 2000 count has been revised since the publication of the Census 2000 reports as a result of certified Count Question Resolution (CQR) changes (see also <[www.census.gov/prod/cen2000/notes/errata.pdf](http://www.census.gov/prod/cen2000/notes/errata.pdf)>). This symbol appears only in the 2010 Census CPH-2, *Population and Housing Unit Counts*, report series.
- A minus sign “–” preceding a figure denotes decrease. The minus sign appears only in the 2010 Census CPH-2, *Population and Housing Unit Counts*, report series.

The following are examples of geographic abbreviations and terms that may be used in the tables in this report:

- A “(part)” next to the name of a geographic area in a hierarchical presentation indicates that the geographic entity is located only partially in the superior geographic entity. For example, a “(part)” next to a place name in a county subdivision-place hierarchy indicates that the place is located in more than one county subdivision. (Places also may be “split” by county, congressional district, urban/rural, metropolitan area, voting district, and other geographic boundaries, depending on the presentation.) Other geographic entities also can be “split” by a higher-level entity. The exception is a tabulation block, which is unique within all geographic entities in census products.
- ANVSA is Alaska Native village statistical area.
- ANRC is Alaska Native Regional Corporation.
- CCD is census county division.
- CDP is census designated place.
- CSA is combined statistical area.
- NECTA is New England city and town area.
- Metro Area is metropolitan statistical area.

- 
- Micro Area is micropolitan statistical area.
  - OTSA is Oklahoma tribal statistical area.
  - SDTSA is state designated tribal statistical area.
  - TDSA is tribal designated statistical area.
  - UT is unorganized territory.

## GRAPHICS

Charts, statistical maps, and other graphic summaries are included in some 2010 Census reports.

## USER NOTES

User notes include general explanatory information, historical notes, and geographic notes. They also provide information about unique characteristics of the report and sometimes changes or corrections made too late to be reflected in the text or tables themselves. However, sometimes this information becomes available too late to be reflected even in the user notes. Therefore, updates are available in the *Notes and Errata* document at <[www.census.gov/prod/cen2010/notes/errata.pdf](http://www.census.gov/prod/cen2010/notes/errata.pdf)>.

## APPENDIXES

Appendixes A through D, and F through H, described below, are in the separate printed volume, CPH-2-A, *Population and Housing Unit Counts, Selected Appendixes*, or on the Internet at <[www.census.gov/prod/cen2010/cph-2-a.pdf](http://www.census.gov/prod/cen2010/cph-2-a.pdf)>. Appendix E is included in this report.

**Appendix A, Geographic Terms and Concepts.** Provides definitions of the types of geographic areas and related information used in census products.

**Appendix B, Definitions of Subject Characteristics.** Contains definitions for the subject-matter terms used in census products, including explanations of derived measures, limitations of the data, and comparability with previous censuses. The subjects are listed alphabetically. Population characteristics are defined first, followed by the definitions of the housing subjects.

**Appendix C, Data Collection and Processing Procedures.** Explains the 2010 Census mission and scope and provides thumbnail descriptions of 2010 Census operations.

**Appendix D, Questionnaire.** Presents a facsimile of the 2010 Census questionnaire used to collect the data in this report.

**Appendix E, Maps.** Contains maps depicting the geographic areas shown in this report.

**Appendix F, Operational Overview and Accuracy of the Data.** Provides information on 2010 Census operations, including group quarters enumeration, confidentiality of the data, imputation of housing unit status and population counts, sources of errors in the data, and data editing.

**Appendix G, Residence Rule and Residence Situations for the 2010 Census of the United States.** Contains a description of the residence rule and residence situations used by Census Bureau staff to guide decisions on where people should be counted in the 2010 Census. This document is the basis for residence-related sections of questionnaires, collection instruments, field materials, and training materials.

**Appendix H, Acknowledgments.** Lists many of the U.S. Census Bureau staff who participated in report preparation.



# Table Finding Guide

## SUBJECTS BY TYPE OF GEOGRAPHIC AREA AND TABLE NUMBER

The types of geographic areas covered in this report are shown on the side, and subjects are shown at the top. See CPH-2-A, *Population and Housing Unit Counts, Selected Appendixes* (<[www.census.gov/prod/cen2010/cph-2-a.pdf](http://www.census.gov/prod/cen2010/cph-2-a.pdf)>), for a description of area classifications (Appendix A) and for definitions and explanations of subject characteristics (Appendix B).

Geographic area	Population			Housing units			Area measurement		Average per square mile of land (density)		Number of places
	2010 Census	Previous censuses	Change from previous census	2010 Census	Previous censuses	Change from previous census	Total area	Land area	Population	Housing units	
<b>THE STATE<sup>1</sup></b>											
Total . . . . .	1,2,3,4,5,7,8,9,12	1,4,8,9	1,5,9	1,2,4,5,8,9,12	1,4,8,9	1,5,9	8,9	2,5,8,9	5,8,9	5,8,9	1,3
Urban and rural . . . . .	1,2,3,7,12	1	1	1,2,12	1	1	—	2	—	—	3
Current urban definition . . . . .	1,2,7,12	1	1	1,2,12	1	1	—	2	—	—	—
1950–90 urban definition . . . . .	1	1	1	1	1	1	—	—	—	—	—
Urban and rural by size of place . . . . .	3	—	—	—	—	—	—	—	—	—	3
In urbanized area and in urban cluster . . . . .	2,7,12	—	—	2,12	—	—	—	2	—	—	—
Size of urban area . . . . .	2	—	—	2	—	—	—	2	—	—	—
In place and not in place . . . . .	3,7	—	—	—	—	—	—	—	—	—	3
<b>COUNTY<sup>2</sup></b>											
Total . . . . .	4,5,6,8	4,6,8	5,6	4,8	4,8	5	8	5,8	5,8	5,8	—
Urban and rural . . . . .	7	—	—	—	—	—	—	—	—	—	—
By percent change rank . . . . .	6	6	6	—	—	—	—	—	—	—	—
<b>COUNTY SUBDIVISION<sup>3</sup></b>											
By county . . . . .	8	8	—	8	8	—	8	8	8	8	—
Alphabetically . . . . .	9	9	9	9	9	9	9	9	9	9	—
By 2010 rank . . . . .	10a	10a	—	10a	10a	—	—	—	—	—	—
By percent change rank . . . . .	11a	11a	11a	—	—	—	—	—	—	—	—
<b>PLACE</b>											
By county and county subdivision . . . . .	8	8	—	8	8	—	8	8	8	8	—
Alphabetically . . . . .	9	9	9	9	9	9	9	9	9	9	—
By 2010 rank . . . . .	10	10	—	10	10	—	—	—	—	—	—
By percent change rank . . . . .	11	11	11	—	—	—	—	—	—	—	—
<b>URBAN AREA</b>											
Urbanized area and urban cluster . . . . .	12	—	12	—	—	—	—	—	—	—	—

<sup>1</sup> State, District of Columbia, or Puerto Rico.

<sup>2</sup> Parish in Louisiana; city and borough, municipality, borough, or census area in Alaska; and municipio in Puerto Rico; in Maryland, Missouri, Nevada, and Virginia, one or more cities are independent of counties and are treated as statistical equivalents of counties; the entire District of Columbia, which has no counties, is treated as a county equivalent.

<sup>3</sup> County subdivisions within the state are shown alphabetically with places for the following 12 states: Connecticut, Maine, Massachusetts, Michigan, Minnesota, New Hampshire, New Jersey, New York, Pennsylvania, Rhode Island, Vermont, and Wisconsin.





# User Notes

---

Additional information concerning this 2010 Census product may become available after this report is published. This information, called *Notes and Errata*, is available in portable document format (PDF) on the U.S. Census Bureau's Internet site at <[www.census.gov/prod/cen2010/notes/errata.pdf](http://www.census.gov/prod/cen2010/notes/errata.pdf)>.

## GENERAL NOTES

### User Note 1

The user should be aware that there are limitations to many of these data. Please refer to the text provided with this report for further explanation of the limitations of the data. The population and other data shown for the 2010 Census in this report are as of April 1, 2010; the boundaries used for all geographic entities are as of January 1, 2010. All boundaries are intended for Census Bureau statistical data collection and presentation only; their depiction and designation for statistical purposes do not constitute a determination of jurisdictional authority or entitlement. Corrections to the 2010 Census data as a result of certified Count Question Resolution (CQR) changes are available from the Census Bureau's Internet site at <[www.census.gov/prod/cen2010/notes/errata.pdf](http://www.census.gov/prod/cen2010/notes/errata.pdf)>.

### User Note 2

Data comparability for county subdivisions is shown only when the county subdivision contains substantially the same territory as reported for Census 2000 (generally defined as at least 60 percent of the previous territory). There is no comparability provided for county subdivisions that have been extensively revised. Revised entities are noted by and within county. Changes to a geographic entity can be the result of legal change actions, statistical redefinition, correction of previous boundary or drafting errors, or new erroneous information.

Incorporated place and census designated place (CDP) comparability is provided for all places that retained their name or general area without regard to the amount of territorial change between censuses. Place comparability is not shown if the entity is new for the 2010 Census or is the result of a merger that created an entirely new entity, or if a 2010 Census geographic area shares no area with a Census 2000 area of the same name. American Indian area (including tribal subdivisions), Alaska Native area, and Hawaiian home land comparability follows the same rules as for place comparability.

### User Note 3

When applicable, tables show the revised Census 2000 population and/or housing unit counts that resulted from the Count Question Resolution (CQR) program. These revised counts are accompanied by a prefix "r" symbol in the data tables.

Derived values (e.g., percent distribution, density, or change) that are calculated from Census 2000 population or housing unit counts only account for the aforementioned CQR revisions in certain cases.

- Calculations include the corrected Census 2000 counts when a table:
  - Shows population or housing unit change (or percent change) from 2000 to 2010.
  - Shows population or housing unit change (or percent change) from 1990 to 2000, and also shows the 2000 population or housing unit count that it is derived from.
  - Shows population or housing unit density or percent distribution in 2000, and also shows the 2000 population or housing unit count that it is derived from.

- 
- Calculations do not include the corrected Census 2000 counts when a table:
    - Shows population or housing unit change (or percent change) from 1990 to 2000, but does not show the 2000 population or housing unit count that it is derived from.
    - Shows population or housing unit density or percent distribution in 2000, but does not show the 2000 population or housing unit count that it is derived from.
  - When a table shows component parts of a revised 2000 population or housing unit count (e.g., classified by urban/rural or by size of place), the component parts may not sum to the total population or housing unit count, because the component parts were not revised during the 2000 CQR program. Therefore, any derived values (e.g., percent distribution or number of places by population size) for the component parts cannot account for the revised Census 2000 counts either.

## **HISTORICAL NOTES**

The United States acquired the area of Nevada from Mexico in 1848 and primarily included in Utah Territory with a small part in New Mexico Territory when each was organized in 1850. Nevada Territory was organized from the western part of Utah Territory on March 2, 1861. The territory added area along the eastern boundary from Utah Territory in 1862. Nevada was admitted to the Union on October 31, 1864, as the 36th state. In 1866, additional territory on the east and southeast was added from Utah and Arizona territories, and the state assumed generally the same boundary as the present state.

Although the territory had not yet been legally established, census data for Nevada are available beginning with the 1860 census. The 1860 census population is for the area of present-day Nevada formed from Utah Territory. The portion of present-day Nevada then in New Mexico Territory was not enumerated in 1860. The population of the entire legally established Utah Territory (of which the area of Nevada was a part) in 1860 was 47,130. For an explanation of the revision to the 1870 population of Nevada, see Richard L. Forstall, *Population of States and Counties of the United States: 1790-1990*, Washington, DC: U.S. Government Printing Office, 1996, page 104.

## **GEOGRAPHIC NOTES**

Nevada is divided into 16 counties and one county equivalent. Carson City is an independent city not within any county, and the Census Bureau treats it as equivalent to a county for data presentation purposes. The 71 county subdivisions in the state are census county divisions (CCDs), which are statistical subdivisions delineated for presentation of decennial census data.

There are 19 incorporated places and 110 CDPs in Nevada. Incorporated places in the state are legally described as cities, except for Carson City, which has no legal description. The Census Bureau treats all incorporated places and CDPs as dependent within CCDs.

## **GEOGRAPHIC CHANGE NOTES**

The Geographic Change Notes listed below document high-level geographic entities—American Indian areas, Alaska Native areas, and Hawaiian home lands; counties and their equivalents; county subdivisions; and places—that are different from the information reported in Census 2000. The notes identify geographic entities whose name, legal description, and/or boundary have changed, entities that no longer exist, newly established entities (both legal and statistical), and changes in geographic relationships, such as places that exist in one county and have expanded into or withdrawn from another county (the notes do not identify the other county(ies) in which the entity exists; this can be determined from Table 9 of this publication), places that have been removed from comparable 2000 county subdivisions, and places that have become independent of or dependent within one or more county subdivisions. The changes are reported by and within county; counties without changes are not shown in the listing. Changes to American Indian areas, Alaska Native areas, and Hawaiian home lands appear after the list of counties; areas with no changes are not shown. A few of the reported changes in name, legal status, or legal relationship may be incorrect; if so, the correct version is shown in any Correction Notes section above. Some

---

changes are the result of legal actions that took place prior to Census 2000 but were not reported in that census.

For the 2010 Census, the notes reflect any boundary change that affects a geographic entity, regardless of whether it is the result of legal action, redefinition of a statistical entity, correction of a previous drafting error, or new erroneous information. Between Census 2000 and the 2010 Census, the Census Bureau invested in improving the coordinate accuracy of its geographic database. As a result, the geographic positions of boundaries may be different between the two censuses even though little or no change actually occurred to the boundaries. In compiling the Geographic Change Notes, the Census Bureau inspected the many corrections to determine if a change actually affected significant land area or population. For example, the county-level text “all MCDs [minor civil divisions] revised” may reflect a legal redistricting of all county subdivisions in the county, a major or minor relocation of county subdivision boundaries due to more accurate mapping or more accurate boundary information, or a combination of these that, in one way or another, affect every county subdivision in a county. Boundary corrections that resulted in incorporated places gaining or losing territory are shown as annexations or detachments even if no legal action occurred between 2000 and 2010. Most places shown with a detachment resulted from such corrections. In states whose legal entities rarely undergo a legal boundary change, such as the New England states, most of the entities reported to have annexed, detached, exchanged, gained, or lost territory did so as the result of mapping changes, not legal actions. The extent and location of the boundary changes affecting any particular entity can be determined by comparing the TIGER/Line® Shapefiles, Cartographic Boundary Files, or a comparable set of maps for the 2000 and 2010 censuses.

### **Counties, County Subdivisions, and Places**

Churchill County—*Annexations*: Fallon city.

Clark County—*County Changes*: Clark CCD, Clark County, lost area to Pahrump CCD, Nye County; *CCD Changes*: Clark CCD exchanged area with Las Vegas CCD; *Annexations*: Boulder City, Henderson, Las Vegas, Mesquite, and North Las Vegas cities; *Detachments*: Henderson (to Paradise CDP), Las Vegas, and Mesquite cities; *New CDPs*: Nelson; *CDP Changes*: Bunkerville CDP part annexed to Mesquite city; Enterprise CDP part annexed to Henderson city and lost additional area; Indian Springs CDP lost area; Nellis AFB CDP part annexed to North Las Vegas city and lost area to Sunrise Manor CDP; Paradise CDP gained area detached from Henderson city, gained additional area, and part annexed to Henderson city; Spring Valley CDP gained area, lost area to Summerlin South CDP, and lost additional area; Summerlin South CDP gained area from Spring Valley CDP, gained additional area, and lost area; Sunrise Manor CDP gained area from Nellis AFB CDP, gained additional area, part annexed to North Las Vegas city, lost area to Whitney CDP, and lost additional area; Whitney CDP gained area from Sunrise Manor CDP, gained additional area, part annexed to Henderson city, and lost additional area; *Deleted Relationships*: Spring Valley CDP removed from Clark CCD.

Douglas County—*CCD Changes*: Gardnerville-Minden CCD gained area from Pine Nut CCD; *New CDPs*: Carter Springs, Double Spring, East Valley, Fish Springs, Genoa, Glenbrook, Lakeridge, Logan Creek, Round Hill Village (formed from part of deleted Zephyr Cove-Round Hill Village CDP); Ruhestroth, Skyland, Topaz Lake, Topaz Ranch Estates, and Zephyr Cove (formed from part of deleted Zephyr Cove-Round Hill Village CDP); *Deleted CDPs*: Zephyr Cove-Round Hill Village (split to form Round Hill Village and Zephyr Hill CDPs); *CDP Changes*: Gardnerville Ranchos, Indian Hills, and Johnson Lane CDPs gained area; *Deleted Relationships*: Indian Hills CDP removed from Gardnerville-Minden CCD.

Elko County—*Annexations*: Carlin, Elko, and Wells cities; *New CDPs*: Jackpot, Lamoille, Montello, Oasis, and Osino.

Esmeralda County—*Name Changes*: Silver Peak CCD name corrected from Silverpeak; *New CDPs*: Dyer, Goldfield, and Silver Peak.

Eureka County—*New CDPs*: Crescent Valley and Eureka.

---

Humboldt County—*Name Changes*: Fort McDermitt CDP name changed from McDermitt; *CCD Changes*: Winnemucca CCD gained area from Golconda CCD; *Annexations*: Winnemucca city; *Detachments*: Winnemucca city; *New CDPs*: Denio, Golconda, McDermitt [Note: New McDermitt CDP contains no area in the 2000 McDermitt CDP], Orovada, Paradise Valley, and Valmy; *CDP Changes*: Fort McDermitt CDP gained area; *Deleted Relationships*: Winnemucca city removed from Golconda CCD due to CCD boundary change.

Lander County—*New CDPs*: Austin and Kingston; *CDP Changes*: Battle Mountain CDP gained area.

Lincoln County—*CCD Changes*: Alamo CCD gained area from Caliente CCD; *New CDPs*: Alamo, Beaverdam, Bennett Springs, Dry Valley, Hiko, Mount Wilson, Panaca, Pioche, Rachel, and Ursine.

Lyon County—*County Changes*: Fernley CCD, Lyon County, gained area from Pyramid Lake CCD, Washoe County; *Incorporations*: Fernley city in 2001 (formed from parts of Fernley and Silver Springs CDPs and additional area); *CCD Changes*: Fernley CCD gained area from Silver Springs CCD; Yerington CCD gained area from Smith Valley CCD; *Annexations*: Fernley and Yerington cities; *New CDPs*: Stagecoach; *Deleted CDPs*: Fernley (incorporated); *CDP Changes*: Silver Springs CDP part incorporated into Fernley city.

Mineral County—*CCD Changes*: Hawthorne CCD gained area from Walker River CCD; *New CDPs*: Mina and Walker Lake; *CDP Changes*: Hawthorne CDP gained area; Schurz CDP lost area; *Deleted Relationships*: Schurz CDP removed from Hawthorne CCD.

Nye County—*Name Changes*: Ralston Valley CCD name changed from Ralston; *County Changes*: Pahrump CCD gained area from Clark CCD, Clark County; *CCD Changes*: Beatty CCD exchanged area with Yucca Flat CCD; Crystal CCD merged into Pahrump CCD; *Disincorporations*: Gabbs city in 2001 (defined as a CDP in substantively smaller boundaries for 2010); *New CDPs*: Gabbs (formed from part of disincorporated Gabbs city and additional area).

Pershing County—*CCD Changes*: Lovelock CCD gained area from Imlay CCD; *Annexations*: Lovelock city; *New CDPs*: Grass Valley, Humboldt River Ranch, and Imlay.

Storey County—*New CDPs*: Virginia City.

Washoe County—*County Changes*: Pyramid Lake CCD, Washoe County, lost area to Fernley CCD, Lyon County; *CCD Changes*: Incline Village CCD exchanged area with Reno Southwest CCD; North Valleys CCD exchanged area with Verdi CCD and lost area to Reno North CCD; Pyramid Lake CCD gained area from Warm Springs-Truckee Canyon CCD; Reno North CCD gained area from North Valleys CCD; Reno Southwest exchanged area with Incline Village CCD and lost area to Verdi and Washoe Valley CCDs; Sparks CCD exchanged area with Warm Springs-Truckee Canyon CCD; Sun Valley CCD exchanged area with Warm Springs-Truckee Canyon CCD; Verdi CCD gained area from Reno Southwest CCD and exchanged area with North Valleys CCD; Warm Springs-Truckee Canyon CCD exchanged area with Sparks and Sun Valley CCDs and lost area to Pyramid Lake CCD; Washoe Valley CCD gained area from Reno Southwest CCD; *Annexations*: Reno and Sparks cities; *Detachments*: Reno and Sparks (including part to Reno city) cities; *New CDPs*: Crystal Bay (formed from part of deleted Incline Village-Crystal Bay CDP), Empire (formed from part of deleted Gerlach-Empire CDP), Gerlach (formed from part of deleted Gerlach-Empire CDP), Golden Valley (formed from part of deleted Lemmon Valley-Golden Valley CDP), Incline Village (formed from part of deleted Incline Village-Crystal Bay CDP), Lemmon Valley (formed from part of deleted Lemmon Valley-Golden Valley CDP), Mogul (formed from part of deleted Verdi-Mogul CDP and additional area), Verdi (formed from part of deleted Verdi-Mogul CDP), and Washoe Valley; *Deleted CDPs*: Gerlach-Empire (split to form Empire and Gerlach CDPs), Incline Village-Crystal Bay (split to form Crystal Bay and Incline Village CDPs), Lemmon Valley-Golden Valley (part annexed to Reno city and remainder taken to form Golden Valley and Lemmon Valley CDPs), and Verdi-Mogul (part annexed to Reno city and remainder taken to form Verdi CDP and part of Mogul CDP); *CDP Changes*: Cold Springs CDP part annexed to Reno city and lost additional area; Spanish Springs CDP part annexed to Sparks city; Sun Valley CDP part annexed to Reno city.

White Pine County—*Annexations*: Ely city; *New CDPs*: Baker, Lund, Preston, and Ruth.

---

### **American Indian Areas**

Ely Reservation—Gained area in White Pine County.

Fallon Paiute-Shoshone Colony and Off-Reservation Trust Land—Reservation portion part converted to off-reservation trust land in Churchill County; Added additional off-reservation trust land in Churchill and Lyon Counties.

Fort McDermitt Indian Reservation (part)—Name corrected from Fort McDermitt Reservation.

Las Vegas Indian Colony—Name corrected from Las Vegas Colony.

Lovelock Indian Colony—Name corrected from Lovelock Colony.

Moapa River Indian Reservation—Name corrected from Moapa River Reservation.

Pyramid Lake Paiute Reservation—Name changed from Pyramid Lake Reservation; Gained area in Lyon, Storey, and Washoe Counties.

Reno-Sparks Indian Colony—Name corrected from Reno-Sparks Colony; Gained and lost area in Washoe County.

Stewart Community—Lost area in Douglas County.

Summit Lake Reservation and Off-Reservation Trust Land—Added off-reservation trust land in Humboldt County.

Timbi-Sha Shoshone Reservation and Off-Reservation Trust Land (part)—New area for 2010 in Esmeralda and Nye Counties.

Washoe Ranches Trust Land (part)—New area for 2010 in Carson City and Douglas and Lyon Counties.

Winnemucca Indian Colony—Name corrected from Winnemucca Colony.



## Crosswalk of Urban Areas and Places: 2010

Urban Area	Place Within Urban Area
<b>URBANIZED AREA</b>	
Carson City, NV Urbanized Area	Carson City (part) Indian Hills CDP (part)
Las Vegas--Henderson, NV Urbanized Area	Enterprise CDP (part) Henderson city (part) Las Vegas city (part) Nellis AFB CDP (part) North Las Vegas city (part) Paradise CDP Spring Valley CDP Summerlin South CDP (part) Sunrise Manor CDP (part) Whitney CDP Winchester CDP
Reno, NV--CA Urbanized Area (part)	Cold Springs CDP (part) Golden Valley CDP (part) Lemmon Valley CDP (part) Mogul CDP (part) Reno city (part) Spanish Springs CDP (part) Sparks city (part) Sun Valley CDP (part) Verdi CDP (part)
<b>URBAN CLUSTER</b>	
Battle Mountain, NV Urban Cluster	Battle Mountain CDP (part)
Boulder City, NV Urban Cluster	Boulder City city (part)
Bullhead City, AZ--NV Urban Cluster (part)	Laughlin CDP (part)
Dayton, NV Urban Cluster	Dayton CDP (part)
Elko, NV Urban Cluster	Elko city (part)
Ely, NV Urban Cluster	Ely city (part)
Fallon, NV Urban Cluster	Fallon city (part)
Fernley, NV Urban Cluster	Fernley city (part) Wadsworth CDP (part)
Gardnerville Ranchos, NV Urban Cluster	Gardnerville CDP (part) Gardnerville Ranchos CDP (part) Minden CDP (part) Ruhensroth CDP (part)
Hawthorne, NV Urban Cluster	Hawthorne CDP (part)
Incline Village, NV--CA Urban Cluster (part)	Crystal Bay CDP (part) Incline Village CDP (part)
Johnson Lane, NV Urban Cluster	Johnson Lane CDP (part)
Laughlin, NV Urban Cluster	Laughlin CDP (part)
Mesquite, NV--AZ Urban Cluster (part)	Mesquite city (part)
Moapa Valley, NV Urban Cluster	Moapa Valley CDP (part)
Pahrump, NV Urban Cluster	Pahrump CDP (part)
South Lake Tahoe, CA--NV Urban Cluster (part)	Kingsbury CDP (part) Round Hill Village CDP (part) Stateline CDP (part)
Spring Creek North, NV Urban Cluster	Spring Creek CDP (part)
Spring Creek South, NV Urban Cluster	Spring Creek CDP (part)
Washoe Valley, NV Urban Cluster	Washoe Valley CDP (part)
West Wendover, NV--UT Urban Cluster (part)	West Wendover city (part)
Winnemucca, NV Urban Cluster	Winnemucca city (part)
Yerington, NV Urban Cluster	Yerington city (part)





Table 1.

**Population: Earliest Census to 2010; and Housing Units: 1950 to 2010**

[For information concerning historical counts and geographic change, see "User Notes." For information on confidentiality, nonsampling error, and definitions, see Appendixes]

State Urban and Rural	State total				Urban			Rural			Percent of total	
	Number	Change from preceding census		Number of places of 2,500 or more	Number	Change from preceding census		Number	Change from preceding census		Urban	Rural
		Number	Percent			Number	Percent		Number	Percent		
<b>POPULATION</b>												
<b>Current urban definition:</b>												
2010 (Apr. 1) .....	2,700,551	702,294	35.1	42	2,543,797	715,151	39.1	156,754	-12,857	-7.6	94.2	5.8
2000 (Apr. 1) .....	1,998,257	796,582	66.3	44	1,828,646	778,675	74.2	169,611	17,749	11.7	91.5	8.5
1990 (Apr. 1) .....	1,201,675	(X)	(X)	32	1,049,971	(X)	(X)	151,862	(X)	(X)	87.4	12.6
<b>1950-90 urban definition:</b>												
1990 (Apr. 1) .....	1,201,675	401,167	50.1	32	1,061,444	378,497	55.4	140,389	22,843	19.4	88.3	11.7
1980 (Apr. 1) .....	800,508	311,770	63.8	24	682,947	287,611	72.8	117,546	24,144	25.8	85.3	14.7
1970 (Apr. 1) .....	488,738	203,460	71.3	18	395,336	194,632	97.0	93,402	8,828	10.4	80.9	19.1
1960 (Apr. 1) .....	285,278	125,195	78.2	12	200,704	109,079	119.0	84,574	16,116	23.5	70.4	29.6
1950 (Apr. 1) .....	160,083	(X)	(X)	10	91,625	(X)	(X)	68,458	(X)	(X)	57.2	42.8
<b>Pre-1950 urban definition:</b>												
1960 (Apr. 1) .....	285,278	125,195	78.2	11	189,165	105,086	125.0	96,113	20,109	26.5	66.3	33.7
1950 (Apr. 1) .....	160,083	49,836	45.2	8	84,079	40,788	94.2	76,004	9,048	13.5	52.5	47.5
1940 (Apr. 1) .....	110,247	19,189	21.1	5	43,291	8,827	25.6	66,956	10,362	18.3	39.3	60.7
1930 (Apr. 1) .....	91,058	13,651	17.6	5	34,464	19,210	125.9	56,594	-5,559	-8.9	37.8	62.2
1920 (Jan. 1) .....	77,407	-4,468	-5.5	2	15,254	1,887	14.1	62,153	-6,355	-9.3	19.7	80.3
1910 (Apr. 15) .....	81,875	39,540	93.4	2	13,367	6,172	85.8	68,508	33,368	95.0	16.3	83.7
1900 (June 1) .....	42,335	-5,020	-10.6	2	7,195	-8,829	-55.1	35,140	3,809	12.2	17.0	83.0
1890 (June 1) .....	47,355	-14,911	-23.9	3	16,024	-3,329	-17.2	31,331	-11,582	-27.0	33.8	66.2
1880 (June 1) .....	62,266	19,325	45.0	3	19,353	12,305	174.6	42,913	7,020	19.6	31.1	68.9
1870 (June 1) .....	42,941	36,084	526.2	1	7,048	7,048	(X)	35,893	29,036	423.5	16.4	83.6
1860 (June 1) .....	6,857	(X)	(X)	-	-	(X)	(X)	6,857	(X)	(X)	-	100.0
<b>HOUSING UNITS</b>												
<b>Current urban definition:</b>												
2010 (Apr. 1) .....	1,173,814	346,357	41.9	(X)	1,097,550	347,620	46.4	76,264	-1,263	-1.6	93.5	6.5
2000 (Apr. 1) .....	827,457	308,680	59.5	(X)	749,930	298,568	66.1	77,527	10,031	14.9	90.6	9.4
1990 (Apr. 1) .....	518,777	(X)	(X)	(X)	451,362	(X)	(X)	67,496	(X)	(X)	87.0	13.0
<b>1950-90 urban definition:</b>												
1990 (Apr. 1) .....	518,777	178,821	52.6	(X)	456,793	167,397	57.8	62,065	11,512	22.8	88.0	12.0
1980 (Apr. 1) .....	339,956	167,398	97.0	(X)	289,396	151,960	110.6	50,553	15,431	43.9	85.1	14.9
1970 (Apr. 1) .....	172,558	70,935	69.8	(X)	137,436	67,057	95.3	35,122	3,878	12.4	79.6	20.4
1960 (Apr. 1) .....	101,623	45,108	79.8	(X)	70,379	38,830	123.1	31,244	6,278	25.1	69.3	30.7
1950 (Apr. 1) .....	56,515	(X)	(X)	(X)	31,549	(X)	(X)	24,966	(X)	(X)	55.8	44.2

Table 2.

**Population, Housing Units, and Land Area by Urban and Rural and Size of Urban Area: 2010**

[Areas classified by population size. For information on confidentiality, nonsampling error, and definitions, see Appendixes]

State Urban and Rural Size of Urban Area [Population]	Population		Housing units		Land area		Number of urban areas		
	Total	Percent distribution	Total	Percent distribution	In square miles	Percent distribution	Total	Entirely in state	Partly in state
<b>Nevada</b> .....	<b>2,700,551</b>	<b>100.0</b>	<b>1,173,814</b>	<b>100.0</b>	<b>109,781</b>	<b>100.0</b>	<b>26</b>	<b>20</b>	<b>6</b>
<b>Urban</b> .....	<b>2,543,797</b>	<b>94.2</b>	<b>1,097,550</b>	<b>93.5</b>	<b>767</b>	<b>0.7</b>	<b>26</b>	<b>20</b>	<b>6</b>
In urbanized area .....	2,336,222	86.5	999,698	85.2	604	0.6	3	2	1
1,000,000 or more .....	1,886,011	69.8	806,755	68.7	417	0.4	1	1	—
500,000 to 999,999 .....	—	—	—	—	—	—	—	—	—
250,000 to 499,999 .....	392,132	14.5	168,321	14.3	164	0.2	1	—	1
100,000 to 249,999 .....	—	—	—	—	—	—	—	—	—
50,000 to 99,999 .....	58,079	2.2	24,622	2.1	23	—	1	1	—
In urban cluster .....	207,575	7.7	97,852	8.3	163	0.2	23	18	5
25,000 to 49,999 .....	30,624	1.1	15,261	1.3	46	—	3	1	2
10,000 to 24,999 .....	131,360	4.9	61,900	5.3	83	0.1	9	7	2
5,000 to 9,999 .....	21,437	0.8	9,934	0.9	14	—	4	3	1
2,500 to 4,999 .....	24,154	0.9	10,757	0.9	19	—	7	7	—
<b>Cumulative summary:</b>									
Urban area of—									
1,000,000 or more .....	1,886,011	69.8	806,755	68.7	417	0.4	1	1	—
500,000 or more .....	1,886,011	69.8	806,755	68.7	417	0.4	1	1	—
250,000 or more .....	2,278,143	84.4	975,076	83.1	581	0.5	2	1	1
100,000 or more .....	2,278,143	84.4	975,076	83.1	581	0.5	2	1	1
50,000 or more .....	2,336,222	86.5	999,698	85.2	604	0.6	3	2	1
25,000 or more .....	2,366,846	87.6	1,014,959	86.5	651	0.6	6	3	3
10,000 or more .....	2,498,206	92.5	1,076,859	91.7	734	0.7	15	10	5
5,000 or more .....	2,519,643	93.3	1,086,793	92.6	748	0.7	19	13	6
2,500 or more .....	2,543,797	94.2	1,097,550	93.5	767	0.7	26	20	6
<b>Rural</b> .....	<b>156,754</b>	<b>5.8</b>	<b>76,264</b>	<b>6.5</b>	<b>109,014</b>	<b>99.3</b>	<b>(X)</b>	<b>(X)</b>	<b>(X)</b>

This page is intentionally blank.

Table 3.

**Population by Urban and Rural and Size of Place: 2010**

[Places classified by population size. For information on confidentiality, nonsampling error, and definitions, see Appendixes]

State Size of Place [Population]	Total			Urban								Not in place
	Population	Number of places	Percent of total population	Total	In place							
					All urban places (entirely or partly urban)		Entirely urban places		Partly urban places			
					Population	Number of places	Population	Number of places	Population	Number of places		
<b>Nevada</b> .....	<b>2,700,551</b>	<b>129</b>	<b>100.0</b>	<b>2,543,797</b>	<b>2,456,407</b>	<b>50</b>	<b>468,125</b>	<b>4</b>	<b>1,988,282</b>	<b>46</b>	<b>87,390</b>	
<b>In place</b> .....	<b>2,549,441</b>	<b>129</b>	<b>94.4</b>	<b>2,456,407</b>	<b>2,456,407</b>	<b>50</b>	<b>468,125</b>	<b>4</b>	<b>1,988,282</b>	<b>46</b>	<b>(X)</b>	
<b>Not in place</b> .....	<b>151,110</b>	<b>(X)</b>	<b>5.6</b>	<b>87,390</b>	<b>(X)</b>	<b>(X)</b>	<b>(X)</b>	<b>(X)</b>	<b>(X)</b>	<b>(X)</b>	<b>87,390</b>	
In place of—												
1,000,000 or more .....	—	—	—	—	—	—	—	—	—	—	(X)	
500,000 to 999,999 .....	583,756	1	21.6	583,505	583,505	1	—	—	583,505	1	(X)	
250,000 to 499,999 .....	257,729	1	9.5	255,330	255,330	1	—	—	255,330	1	(X)	
100,000 to 249,999 .....	1,141,597	6	42.3	1,138,869	1,138,869	6	401,562	2	737,307	4	(X)	
50,000 to 99,999 .....	145,538	2	5.4	142,455	142,455	2	—	—	142,455	2	(X)	
25,000 to 49,999 .....	103,004	3	3.8	95,009	95,009	3	66,563	2	28,446	1	(X)	
10,000 to 24,999 .....	150,085	9	5.6	137,281	137,281	9	—	—	137,281	9	(X)	
5,000 to 9,999 .....	84,643	12	3.1	69,519	69,519	11	—	—	69,519	11	(X)	
2,500 to 4,999 .....	27,824	8	1.0	26,596	26,596	8	—	—	26,596	8	(X)	
2,000 to 2,499 .....	9,049	4	0.3	1,087	1,087	1	—	—	1,087	1	(X)	
1,500 to 1,999 .....	8,428	5	0.3	1,417	1,417	1	—	—	1,417	1	(X)	
1,000 to 1,499 .....	16,818	14	0.6	3,427	3,427	3	—	—	3,427	3	(X)	
500 to 999 .....	12,123	16	0.5	1,607	1,607	3	—	—	1,607	3	(X)	
200 to 499 .....	6,177	21	0.2	305	305	1	—	—	305	1	(X)	
Less than 200 .....	2,670	27	0.1	—	—	—	—	—	—	—	(X)	
<b>Cumulative summary:</b>												
In place of—												
1,000,000 or more .....	—	—	—	—	—	—	—	—	—	—	(X)	
500,000 or more .....	583,756	1	21.6	583,505	583,505	1	—	—	583,505	1	(X)	
250,000 or more .....	841,485	2	31.2	838,835	838,835	2	—	—	838,835	2	(X)	
100,000 or more .....	1,983,082	8	73.4	1,977,704	1,977,704	8	401,562	2	1,576,142	6	(X)	
50,000 or more .....	2,128,620	10	78.8	2,120,159	2,120,159	10	401,562	2	1,718,597	8	(X)	
25,000 or more .....	2,231,624	13	82.6	2,215,168	2,215,168	13	468,125	4	1,747,043	9	(X)	
10,000 or more .....	2,381,709	22	88.2	2,352,449	2,352,449	22	468,125	4	1,884,324	18	(X)	
5,000 or more .....	2,466,352	34	91.3	2,421,968	2,421,968	33	468,125	4	1,953,843	29	(X)	
2,500 or more .....	2,494,176	42	92.4	2,448,564	2,448,564	41	468,125	4	1,980,439	37	(X)	
2,000 or more .....	2,503,225	46	92.7	2,449,651	2,449,651	42	468,125	4	1,981,526	38	(X)	
1,500 or more .....	2,511,653	51	93.0	2,451,068	2,451,068	43	468,125	4	1,982,943	39	(X)	
1,000 or more .....	2,528,471	65	93.6	2,454,495	2,454,495	46	468,125	4	1,986,370	42	(X)	
500 or more .....	2,540,594	81	94.1	2,456,102	2,456,102	49	468,125	4	1,987,977	45	(X)	
200 or more .....	2,546,771	102	94.3	2,456,407	2,456,407	50	468,125	4	1,988,282	46	(X)	

Table 3.

**Population by Urban and Rural and Size of Place: 2010—Con.**

[Places classified by population size. For information on confidentiality, nonsampling error, and definitions, see Appendixes]

Total	Rural						Not in place	State Size of Place [Population]
	In place							
	All rural places (entirely or partly rural)		Entirely rural places		Partly rural places			
Population	Number of places	Population	Number of places	Population	Number of places			
<b>156,754</b>	<b>93,034</b>	<b>125</b>	<b>50,115</b>	<b>79</b>	<b>42,919</b>	<b>46</b>	<b>63,720</b>	<b>Nevada</b>
<b>93,034</b>	<b>93,034</b>	<b>125</b>	<b>50,115</b>	<b>79</b>	<b>42,919</b>	<b>46</b>	<b>(X)</b>	<b>In place</b>
<b>63,720</b>	<b>(X)</b>	<b>(X)</b>	<b>(X)</b>	<b>(X)</b>	<b>(X)</b>	<b>(X)</b>	<b>63,720</b>	<b>Not in place</b>
—	—	—	—	—	—	—	(X)	In place of—
251	251	1	—	—	251	1	(X)	1,000,000 or more
2,399	2,399	1	—	—	2,399	1	(X)	500,000 to 999,999
2,728	2,728	4	—	—	2,728	4	(X)	250,000 to 499,999
3,083	3,083	2	—	—	3,083	2	(X)	100,000 to 249,999
7,995	7,995	1	—	—	7,995	1	(X)	50,000 to 99,999
12,804	12,804	9	—	—	12,804	9	(X)	25,000 to 49,999
—	—	—	—	—	—	—	(X)	10,000 to 24,999
15,124	15,124	12	5,296	1	9,828	11	(X)	5,000 to 9,999
1,228	1,228	8	—	—	1,228	8	(X)	2,500 to 4,999
7,962	7,962	4	6,897	3	1,065	1	(X)	2,000 to 2,499
7,011	7,011	5	6,872	4	139	1	(X)	1,500 to 1,999
13,391	13,391	14	12,820	11	571	3	(X)	1,000 to 1,499
10,516	10,516	16	9,688	13	828	3	(X)	500 to 999
5,872	5,872	21	5,872	20	—	1	(X)	200 to 499
2,670	2,670	27	2,670	27	—	—	(X)	Less than 200
—	—	—	—	—	—	—	(X)	<b>Cumulative summary:</b>
251	251	1	—	—	251	1	(X)	In place of—
2,650	2,650	2	—	—	2,650	2	(X)	1,000,000 or more
5,378	5,378	6	—	—	5,378	6	(X)	500,000 or more
8,461	8,461	8	—	—	8,461	8	(X)	250,000 or more
16,456	16,456	9	—	—	16,456	9	(X)	100,000 or more
29,260	29,260	18	—	—	29,260	18	(X)	50,000 or more
—	—	—	—	—	—	—	(X)	25,000 or more
44,384	44,384	30	5,296	1	39,088	29	(X)	10,000 or more
45,612	45,612	38	5,296	1	40,316	37	(X)	5,000 or more
53,574	53,574	42	12,193	4	41,381	38	(X)	2,500 or more
60,585	60,585	47	19,065	8	41,520	39	(X)	2,000 or more
73,976	73,976	61	31,885	19	42,091	42	(X)	1,500 or more
84,492	84,492	77	41,573	32	42,919	45	(X)	1,000 or more
90,364	90,364	98	47,445	52	42,919	46	(X)	500 or more
—	—	—	—	—	—	—	(X)	200 or more

Table 4.

**Population and Housing Units: 1970 to 2010**

[For information concerning historical counts and geographic change, see "User Notes." For information on confidentiality, nonsampling error, and definitions, see Appendixes]

State County/County Equivalent	Population					Housing units				
	2010	2000	1990	1980	1970	2010	2000	1990	1980	1970
<b>Nevada</b> .....	<b>2,700,551</b>	<b>1,998,257</b>	<b>1,201,675</b>	<b>800,508</b>	<b>488,738</b>	<b>1,173,814</b>	<b>827,457</b>	<b>518,777</b>	<b>339,956</b>	<b>172,558</b>
Churchill County .....	24,877	23,982	17,938	13,917	10,513	10,826	9,732	7,290	5,774	3,724
Clark County .....	1,951,269	1,375,765	741,368	463,087	273,288	840,343	559,799	317,134	190,607	93,047
Douglas County .....	46,997	41,259	27,637	19,421	6,882	23,671	19,006	14,121	9,399	3,205
Elko County .....	48,818	45,291	33,463	17,269	13,958	19,566	18,456	13,434	7,667	5,313
Esmeralda County .....	783	971	1,344	777	629	850	833	966	368	422
Eureka County .....	1,987	1,651	1,547	1,198	948	1,076	1,025	817	605	370
Humboldt County .....	16,528	16,106	12,844	9,449	6,375	7,123	6,954	5,044	3,835	2,388
Lander County .....	5,775	5,794	6,266	4,076	2,666	2,575	2,780	2,586	1,664	907
Lincoln County .....	5,345	4,165	3,775	3,732	2,557	2,730	2,178	1,800	1,685	1,043
Lyon County .....	51,980	34,501	20,001	13,594	8,221	22,547	14,279	8,722	5,815	2,922
Mineral County .....	4,772	5,071	6,475	6,217	7,051	2,830	2,866	2,994	3,019	2,478
Nye County .....	43,946	32,485	17,781	9,048	5,599	22,350	15,934	8,073	4,292	2,098
Pershing County .....	6,753	6,693	4,336	3,408	2,670	2,464	2,389	1,908	1,414	1,121
Storey County .....	4,010	3,399	2,526	1,503	695	1,990	1,596	1,085	726	361
Washoe County .....	421,407	339,486	254,667	193,623	121,068	184,841	143,908	112,193	86,051	44,722
White Pine County .....	10,030	9,181	9,264	8,167	10,150	4,498	4,439	3,982	3,664	3,339
Carson City .....	55,274	52,457	40,443	32,022	15,468	23,534	21,283	16,628	13,371	5,098

Table 5.

**Population, Housing Units, Land Area, and Density: 2010; and Percent Change: 1980 to 2010**

[For information concerning historical counts and geographic change, see "User Notes." For information on confidentiality, nonsampling error, and definitions, see Appendixes]

State County/County Equivalent	Population	Housing units	Land area in square miles	Average per square mile of land		Percent change					
				Population density	Housing unit density	Population			Housing units		
						2000 to 2010	1990 to 2000	1980 to 1990	2000 to 2010	1990 to 2000	1980 to 1990
<b>Nevada . . . . .</b>	<b>2,700,551</b>	<b>1,173,814</b>	<b>109,781.18</b>	<b>24.6</b>	<b>10.7</b>	<b>35.1</b>	<b>66.3</b>	<b>50.1</b>	<b>41.9</b>	<b>59.5</b>	<b>52.6</b>
Churchill County . . . . .	24,877	10,826	4,930.46	5.0	2.2	3.7	33.7	28.9	11.2	33.5	26.3
Clark County . . . . .	1,951,269	840,343	7,891.43	247.3	106.5	41.8	85.6	60.1	50.1	76.5	66.4
Douglas County . . . . .	46,997	23,671	709.72	66.2	33.4	13.9	49.3	42.3	24.5	34.6	50.2
Elko County . . . . .	48,818	19,566	17,169.83	2.8	1.1	7.8	35.3	93.8	6.0	37.4	75.2
Esmeralda County . . . . .	783	850	3,581.88	0.2	0.2	-19.4	-27.8	73.0	2.0	-13.8	162.5
Eureka County . . . . .	1,987	1,076	4,175.68	0.5	0.3	20.4	6.7	29.1	5.0	25.5	35.0
Humboldt County . . . . .	16,528	7,123	9,640.76	1.7	0.7	2.6	25.4	35.9	2.4	37.9	31.5
Lander County . . . . .	5,775	2,575	5,490.10	1.1	0.5	-0.3	-7.5	53.7	-7.4	7.5	55.4
Lincoln County . . . . .	5,345	2,730	10,633.20	0.5	0.3	28.3	10.3	1.2	25.3	21.0	6.8
Lyon County . . . . .	51,980	22,547	2,001.19	26.0	11.3	50.7	72.5	47.1	57.9	63.7	50.0
Mineral County . . . . .	4,772	2,830	3,752.84	1.3	0.8	-5.9	-21.7	4.1	-1.3	-4.3	-0.8
Nye County . . . . .	43,946	22,350	18,181.92	2.4	1.2	35.3	82.7	96.5	40.3	97.4	88.1
Pershing County . . . . .	6,753	2,464	6,036.56	1.1	0.4	0.9	54.4	27.2	3.1	25.2	34.9
Storey County . . . . .	4,010	1,990	262.92	15.3	7.6	18.0	34.6	68.1	24.7	47.1	49.4
Washoe County . . . . .	421,407	184,841	6,302.37	66.9	29.3	24.1	33.3	31.5	28.4	28.3	30.4
White Pine County . . . . .	10,030	4,498	8,875.65	1.1	0.5	9.2	-0.9	13.4	1.3	11.5	8.7
Carson City . . . . .	55,274	23,534	144.66	382.1	162.7	5.4	29.7	26.3	10.6	28.0	24.4

Table 6.

### Rank of Counties by Percent Change in Population: 2000 to 2010

[For information concerning historical counts and geographic change, see "User Notes." For information on confidentiality, nonsampling error, and definitions, see Appendixes]

County/County Equivalent	Population		Percent change	
	2010	2000	Rank	Percent
Lyon County . . . . .	51,980	34,501	1	50.7
Clark County . . . . .	1,951,269	1,375,765	2	41.8
Nye County . . . . .	43,946	32,485	3	35.3
Lincoln County . . . . .	5,345	4,165	4	28.3
Washoe County . . . . .	421,407	339,486	5	24.1
Eureka County . . . . .	1,987	1,651	6	20.4
Storey County . . . . .	4,010	3,399	7	18.0
Douglas County . . . . .	46,997	41,259	8	13.9
White Pine County . . . . .	10,030	9,181	9	9.2
Elko County . . . . .	48,818	45,291	10	7.8
Carson City . . . . .	55,274	52,457	11	5.4
Churchill County . . . . .	24,877	23,982	12	3.7
Humboldt County . . . . .	16,528	16,106	13	2.6
Pershing County . . . . .	6,753	6,693	14	0.9
Lander County . . . . .	5,775	5,794	15	-0.3
Mineral County . . . . .	4,772	5,071	16	-5.9
Esmeralda County . . . . .	783	971	17	-19.4



Table 7.

**Population by Urban and Rural: 2010**

[For information on confidentiality, nonsampling error, and definitions, see Appendixes]

State County/County Equivalent	Total population	Urban			Rural			Percent of total population	
		Total	In urbanized area	In urban cluster	Total	In place	Not in place	Urban	Rural
<b>Nevada . . . . .</b>	<b>2,700,551</b>	<b>2,543,797</b>	<b>2,336,222</b>	<b>207,575</b>	<b>156,754</b>	<b>93,034</b>	<b>63,720</b>	<b>94.2</b>	<b>5.8</b>
Churchill County . . . . .	24,877	16,241	–	16,241	8,636	725	7,911	65.3	34.7
Clark County . . . . .	1,951,269	1,925,784	1,886,011	39,773	25,485	16,637	8,848	98.7	1.3
Douglas County . . . . .	46,997	32,168	4,726	27,442	14,829	12,149	2,680	68.4	31.6
Elko County . . . . .	48,818	30,340	–	30,340	18,478	12,841	5,637	62.1	37.9
Esmeralda County . . . . .	783	–	–	–	783	634	149	–	100.0
Eureka County . . . . .	1,987	–	–	–	1,987	1,002	985	–	100.0
Humboldt County . . . . .	16,528	10,268	–	10,268	6,260	1,302	4,958	62.1	37.9
Lander County . . . . .	5,775	3,520	–	3,520	2,255	420	1,835	61.0	39.0
Lincoln County . . . . .	5,345	–	–	–	5,345	4,726	619	–	100.0
Lyon County . . . . .	51,980	32,780	754	32,026	19,200	12,273	6,927	63.1	36.9
Mineral County . . . . .	4,772	3,249	–	3,249	1,523	1,108	415	68.1	31.9
Nye County . . . . .	43,946	28,446	–	28,446	15,500	11,752	3,748	64.7	35.3
Pershing County . . . . .	6,753	–	–	–	6,753	3,345	3,408	–	100.0
Storey County . . . . .	4,010	295	–	295	3,715	855	2,860	7.4	92.6
Washoe County . . . . .	421,407	403,426	392,132	11,294	17,981	8,477	9,504	95.7	4.3
White Pine County . . . . .	10,030	4,681	–	4,681	5,349	2,113	3,236	46.7	53.3
Carson City . . . . .	55,274	52,599	52,599	–	2,675	2,675	–	95.2	4.8

Table 8.

**Population and Housing Units: 1990 to 2010; and Area Measurements and Density: 2010**

[For information concerning historical counts and geographic change, see "User Notes." For information on confidentiality, nonsampling error, and definitions, see Appendixes]

State County/County Equivalent County Subdivision Place	Population			Housing units			Area measurements in square miles		Average per square mile of land	
	2010	2000	1990	2010	2000	1990	Total area	Land area	Population density	Housing unit density
<b>Nevada</b> .....	<b>2,700,551</b>	<b>1,998,257</b>	<b>1,201,675</b>	<b>1,173,814</b>	<b>827,457</b>	<b>518,777</b>	<b>110,571.82</b>	<b>109,781.18</b>	<b>24.6</b>	<b>10.7</b>
Churchill County .....	24,877	23,982	17,938	10,826	9,732	7,290	5,024.06	4,930.46	5.0	2.2
Carson Sink CCD .....	29	35	11	13	14	6	1,196.23	1,175.69	-	-
Dixie Valley CCD .....	170	135	167	94	114	196	2,849.30	2,800.93	0.1	-
Fallon CCD .....	24,678	23,812	17,760	10,719	9,604	7,088	978.52	953.83	25.9	11.2
Fallon city .....	8,606	7,536	6,430	3,979	3,336	2,760	3.65	3.63	2,370.8	1,096.1
Fallon Station CDP .....	705	1,265	1,092	229	360	300	2.47	2.47	285.4	92.7
Clark County .....	1,951,269	1,375,765	741,368	840,343	559,799	317,134	8,060.81	7,891.43	247.3	106.5
Clark CCD .....	179,324	49,281	25,872	82,530	22,241	10,960	7,584.25	7,414.99	24.2	11.1
Blue Diamond CDP .....	290	282	(X)	135	125	(X)	7.22	7.22	40.2	18.7
Boulder City city (part) .....	2	-	-	2	-	-	169.94	169.94	-	-
Bunkerville CDP .....	1,303	1,014	(X)	381	277	(X)	43.27	42.78	30.5	8.9
Cal-Nev-Ari CDP .....	244	278	(X)	168	199	(X)	2.27	2.27	107.5	74.0
Enterprise CDP (part) .....	44,120	1,000	827	18,204	387	334	18.35	18.35	2,404.4	992.0
Goodsprings CDP .....	229	232	(X)	124	122	(X)	1.43	1.43	160.1	86.7
Henderson city (part) .....	32,688	2,583	-	16,755	1,290	-	27.69	27.69	1,180.5	605.1
Indian Springs CDP .....	991	1,302	1,164	548	657	510	18.01	18.01	55.0	30.4
Las Vegas city (part) .....	12,202	-	-	4,957	-	-	29.18	29.18	418.2	169.9
Laughlin CDP .....	7,323	7,076	4,791	4,966	4,127	2,637	89.39	88.04	83.2	56.4
Mesquite city .....	15,276	9,389	1,871	8,911	4,442	684	32.35	31.89	479.0	279.4
Moapa Town CDP .....	1,025	928	(X)	379	310	(X)	150.82	150.82	6.8	2.5
Moapa Valley CDP .....	6,924	5,784	3,444	2,793	2,213	1,415	43.70	43.67	158.6	64.0
Mount Charleston CDP .....	357	285	(X)	504	362	(X)	29.29	29.29	12.2	17.2
Nelson CDP .....	37	(X)	(X)	43	(X)	(X)	4.80	4.80	7.7	9.0
North Las Vegas city (part) .....	128	-	-	-	-	-	40.46	40.46	3.2	-
Sandy Valley CDP .....	2,051	1,804	(X)	1,024	811	(X)	56.00	56.00	36.6	18.3
Searchlight CDP .....	539	576	(X)	461	444	(X)	13.13	13.13	41.1	35.1
Summerlin South CDP (part) .....	16,800	505	(X)	8,090	283	(X)	8.59	8.59	1,955.8	941.8
Sunrise Manor CDP (part) .....	9,468	7,952	4,451	4,092	3,138	1,599	7.91	7.91	1,197.0	517.3
Las Vegas CCD .....	1,771,945	1,326,484	715,587	757,813	537,558	306,228	476.57	476.44	3,719.1	1,590.6
Boulder City city (part) .....	15,021	14,966	12,567	7,410	6,979	5,390	38.61	38.58	389.3	192.1
Enterprise CDP (part) .....	64,361	13,676	5,585	31,359	6,222	2,172	28.16	28.16	2,285.5	1,113.6
Henderson city (part) .....	225,041	172,798	64,942	96,831	69,859	25,400	80.04	80.04	2,811.6	1,209.8
Las Vegas city (part) .....	571,554	479,137	258,295	238,744	190,724	109,670	106.69	106.64	5,359.7	2,238.8
Nellis AFB CDP .....	3,187	8,896	8,377	1,068	3,040	2,065	2.71	2.71	1,176.0	394.1
North Las Vegas city (part) .....	216,833	115,488	47,707	76,073	36,600	15,837	60.93	60.89	3,561.1	1,249.4
Paradise CDP .....	223,167	186,070	124,682	114,296	85,398	63,924	46.72	46.72	4,776.7	2,446.4
Spring Valley CDP .....	178,395	117,390	51,726	83,678	52,870	22,236	33.23	33.23	5,368.5	2,518.1
Summerlin South CDP (part) .....	7,285	3,230	(X)	3,452	1,472	(X)	1.06	1.06	6,872.6	3,256.6
Sunrise Manor CDP (part) .....	179,904	148,168	90,911	66,163	55,272	35,665	25.44	25.44	7,071.7	2,600.7
Whitney CDP .....	38,585	18,273	(X)	16,420	7,849	(X)	6.74	6.74	5,724.8	2,436.2
Winchester CDP .....	27,978	26,958	23,365	14,969	13,535	12,485	4.34	4.34	6,446.5	3,449.1
Douglas County .....	46,997	41,259	27,637	23,671	19,006	14,121	737.64	709.72	66.2	33.4
Gardnerville-Minden CCD .....	30,220	24,974	15,639	13,203	9,887	6,322	171.52	170.74	177.0	77.3
Carter Springs CDP .....	553	(X)	(X)	241	(X)	(X)	2.80	2.80	197.5	86.1
East Valley CDP (part) .....	955	(X)	(X)	444	(X)	(X)	5.79	5.67	168.4	78.3
Fish Springs CDP (part) .....	231	(X)	(X)	101	(X)	(X)	1.13	1.13	204.4	89.4
Gardnerville CDP .....	5,656	3,357	2,177	2,687	1,556	1,051	4.80	4.80	1,178.3	559.8
Gardnerville Ranchos CDP .....	11,312	11,054	7,455	4,745	4,123	2,810	15.02	15.02	753.1	315.9
Johnson Lane CDP .....	6,490	4,837	2,551	2,643	1,829	943	21.88	21.87	296.8	120.9
Minden CDP .....	3,001	2,836	1,441	1,479	1,231	688	4.25	4.23	709.5	349.6
Ruhenstroth CDP .....	1,293	(X)	(X)	556	(X)	(X)	2.81	2.81	460.1	197.9
Genoa-Jacks Valley CCD .....	8,232	6,631	4,158	3,927	2,752	1,671	66.71	66.65	123.5	58.9
Genoa CDP .....	939	(X)	(X)	581	(X)	(X)	9.19	9.19	102.2	63.2
Indian Hills CDP .....	5,627	4,407	2,544	2,394	1,737	963	14.61	14.61	385.1	163.9
Pine Nut CCD .....	958	787	296	413	313	122	226.81	226.80	4.2	1.8
East Valley CDP (part) .....	519	(X)	(X)	222	(X)	(X)	3.74	3.74	138.8	59.4
Fish Springs CDP (part) .....	417	(X)	(X)	174	(X)	(X)	8.06	8.06	51.7	21.6
Topaz Lake CCD .....	2,185	2,128	1,429	1,276	1,092	796	179.83	178.25	12.3	7.2
Double Spring CDP .....	158	(X)	(X)	71	(X)	(X)	8.77	8.77	18.0	8.1
Topaz Lake CDP .....	157	(X)	(X)	142	(X)	(X)	1.69	1.19	131.9	119.3
Topaz Ranch Estates CDP .....	1,501	(X)	(X)	829	(X)	(X)	14.39	14.39	104.3	57.6
Zephyr Cove CCD .....	5,402	6,739	6,115	4,852	4,962	5,210	92.76	67.28	80.3	72.1
Glenbrook CDP .....	215	(X)	(X)	373	(X)	(X)	4.01	3.79	56.7	98.4
Kingsbury CDP .....	2,152	2,624	2,238	1,868	1,925	2,154	21.81	21.81	98.7	85.6
Lakeridge CDP .....	371	(X)	(X)	355	(X)	(X)	1.53	1.46	254.1	243.2
Logan Creek CDP .....	26	(X)	(X)	31	(X)	(X)	1.81	1.75	14.9	17.7
Round Hill Village CDP .....	759	(X)	(X)	773	(X)	(X)	5.92	5.79	131.1	133.5
Skyland CDP .....	376	(X)	(X)	265	(X)	(X)	4.46	4.36	86.2	60.8
Stateline CDP .....	842	1,215	1,379	463	562	637	0.82	0.72	1,169.4	643.1
Zephyr Cove CDP .....	565	(X)	(X)	663	(X)	(X)	2.24	2.12	266.5	312.7

Table 8.

**Population and Housing Units: 1990 to 2010; and Area Measurements and Density: 2010—Con.**

[For information concerning historical counts and geographic change, see "User Notes." For information on confidentiality, nonsampling error, and definitions, see Appendixes]

State County/County Equivalent County Subdivision Place	Population			Housing units			Area measurements in square miles		Average per square mile of land	
	2010	2000	1990	2010	2000	1990	Total area	Land area	Population density	Housing unit density
<b>Nevada—Con.</b>										
Elko County . . . . .	48,818	45,291	33,463	19,566	18,456	13,434	17,202.95	17,169.83	2.8	1.1
Carlin CCD . . . . .	2,396	2,347	2,300	1,057	1,040	936	443.47	443.37	5.4	2.4
Carlin city . . . . .	2,368	2,161	2,220	1,043	1,014	888	10.44	10.44	226.8	99.9
Elko CCD . . . . .	36,944	32,823	24,246	14,149	12,934	9,115	2,865.64	2,863.13	12.9	4.9
Elko city . . . . .	18,297	16,708	14,836	7,221	6,948	5,887	17.64	17.64	1,037.2	409.4
Lamoille CDP . . . . .	105	(X)	(X)	75	(X)	(X)	1.84	1.84	57.1	40.8
Osino CDP . . . . .	709	(X)	(X)	239	(X)	(X)	2.48	2.48	285.9	96.4
Spring Creek CDP . . . . .	12,361	10,548	5,866	4,394	3,660	1,914	58.84	58.77	210.3	74.8
Jackpot CCD . . . . .	1,285	1,214	1,159	701	532	580	1,405.30	1,404.97	0.9	0.5
Jackpot CDP . . . . .	1,195	(X)	(X)	622	(X)	(X)	3.93	3.88	308.0	160.3
Jarbridge CCD . . . . .	107	112	113	157	191	143	1,816.16	1,815.34	0.1	0.1
Montello CCD . . . . .	349	487	213	271	347	166	1,682.41	1,681.14	0.2	0.2
Montello CDP . . . . .	84	(X)	(X)	89	(X)	(X)	0.40	0.40	210.0	222.5
Oasis CDP . . . . .	29	(X)	(X)	20	(X)	(X)	0.89	0.89	32.6	22.5
Mountain City CCD . . . . .	1,245	1,442	1,333	683	717	691	3,863.96	3,851.08	0.3	0.2
Owyhee CDP . . . . .	953	1,017	908	393	371	353	225.91	225.30	4.2	1.7
Wells CCD . . . . .	2,059	2,117	1,992	1,029	1,046	932	3,455.37	3,442.40	0.6	0.3
Wells city . . . . .	1,292	1,346	1,256	641	633	562	6.90	6.90	187.2	92.9
West Wendover CCD . . . . .	4,433	4,749	2,174	1,519	1,649	898	1,670.64	1,668.39	2.7	0.9
West Wendover city . . . . .	4,410	4,721	(X)	1,504	1,626	(X)	7.48	7.48	589.6	201.1
Esmeralda County . . . . .	783	971	1,344	850	833	966	3,589.04	3,581.88	0.2	0.2
Goldfield CCD . . . . .	307	440	659	458	434	572	1,524.24	1,524.18	0.2	0.3
Goldfield CDP . . . . .	268	(X)	(X)	321	(X)	(X)	1.48	1.48	181.1	216.9
Silver Peak CCD . . . . .	476	531	685	392	399	394	2,064.80	2,057.70	0.2	0.2
Dyer CDP . . . . .	259	(X)	(X)	183	(X)	(X)	32.58	32.49	8.0	5.6
Silver Peak CDP . . . . .	107	(X)	(X)	133	(X)	(X)	0.99	0.99	108.1	134.3
Eureka County . . . . .	1,987	1,651	1,547	1,076	1,025	817	4,179.96	4,175.68	0.5	0.3
Beowawe CCD . . . . .	636	548	440	377	404	275	1,860.30	1,857.72	0.3	0.2
Crescent Valley CDP . . . . .	392	(X)	(X)	237	(X)	(X)	2.23	2.23	175.8	106.3
Eureka CCD . . . . .	1,351	1,103	1,107	699	621	542	2,319.66	2,317.97	0.6	0.3
Eureka CDP . . . . .	610	(X)	(X)	346	(X)	(X)	1.40	1.40	435.7	247.1
Humboldt County . . . . .	16,528	16,106	12,844	7,123	6,954	5,044	9,657.82	9,640.76	1.7	0.7
Golconda CCD . . . . .	1,579	9,952	429	750	4,269	227	1,671.21	1,664.28	0.9	0.5
Golconda CDP . . . . .	214	(X)	(X)	129	(X)	(X)	9.04	9.04	23.7	14.3
Valmy CDP . . . . .	37	(X)	(X)	35	(X)	(X)	3.66	3.66	10.1	9.6
McDermitt CCD . . . . .	1,099	1,240	1,192	609	604	534	2,192.13	2,188.17	0.5	0.3
Fort McDermitt CDP . . . . .	341	269	373	125	107	133	17.93	17.93	19.0	7.0
McDermitt CDP . . . . .	172	(X)	(X)	101	(X)	(X)	3.28	3.28	52.4	30.8
Orovada CDP . . . . .	155	(X)	(X)	96	(X)	(X)	45.30	45.30	3.4	2.1
Paradise Valley CDP . . . . .	109	(X)	(X)	92	(X)	(X)	15.95	15.94	6.8	5.8
Summit Lake CCD . . . . .	318	292	281	232	193	178	3,516.13	3,510.07	0.1	0.1
Denio CDP . . . . .	47	(X)	(X)	44	(X)	(X)	16.12	16.12	2.9	2.7
Winnemucca CCD . . . . .	13,532	4,622	10,942	5,532	1,888	4,105	2,278.35	2,278.24	5.9	2.4
Winnemucca city . . . . .	7,396	1,266	6,102	3,214	646	2,429	9.39	9.39	787.6	342.3
Lander County . . . . .	5,775	5,794	6,266	2,575	2,780	2,586	5,519.49	5,490.10	1.1	0.5
Austin CCD . . . . .	528	468	990	423	372	537	3,782.83	3,753.51	0.1	0.1
Austin CDP . . . . .	192	(X)	(X)	162	(X)	(X)	1.12	1.12	171.4	144.6
Kingston CDP . . . . .	113	(X)	(X)	124	(X)	(X)	4.07	4.07	27.8	30.5
Battle Mountain CCD . . . . .	5,247	5,326	5,276	2,152	2,408	2,049	1,736.66	1,736.59	3.0	1.2
Battle Mountain CDP . . . . .	3,635	2,871	3,542	1,518	1,455	1,431	3.57	3.57	1,018.2	425.2
Lincoln County . . . . .	5,345	4,165	3,775	2,730	2,178	1,800	10,636.99	10,633.20	0.5	0.3
Alamo CCD . . . . .	1,398	1,096	1,023	634	542	440	4,369.22	4,366.66	0.3	0.1
Alamo CDP . . . . .	1,080	(X)	(X)	457	(X)	(X)	30.28	30.28	35.7	15.1
Hiko CDP . . . . .	119	(X)	(X)	50	(X)	(X)	23.74	23.41	5.1	2.1
Rachel CDP . . . . .	54	(X)	(X)	45	(X)	(X)	7.63	7.63	7.1	5.9
Caliente CCD . . . . .	1,263	1,204	1,148	585	546	490	2,591.60	2,591.05	0.5	0.2
Caliente city (part) . . . . .	1,130	1,123	1,111	530	479	449	1.86	1.86	607.5	284.9
Pioche CCD . . . . .	2,684	1,865	1,604	1,511	1,090	870	3,676.17	3,675.49	0.7	0.4
Beaverdam CDP . . . . .	44	(X)	(X)	26	(X)	(X)	3.85	3.85	11.4	6.8
Bennett Springs CDP . . . . .	132	(X)	(X)	69	(X)	(X)	11.86	11.86	11.1	5.8
Caliente city (part) . . . . .	—	—	—	—	—	—	—	—	—	—
Dry Valley CDP . . . . .	78	(X)	(X)	33	(X)	(X)	3.79	3.79	20.6	8.7
Mount Wilson CDP . . . . .	33	(X)	(X)	75	(X)	(X)	4.61	4.61	7.2	16.3
Panaca CDP . . . . .	963	(X)	(X)	426	(X)	(X)	3.26	3.26	295.4	130.7
Pioche CDP . . . . .	1,002	(X)	(X)	564	(X)	(X)	6.15	6.15	162.9	91.7
Ursine CDP . . . . .	91	(X)	(X)	87	(X)	(X)	4.34	4.34	21.0	20.0

Table 8.

**Population and Housing Units: 1990 to 2010; and Area Measurements and Density: 2010—Con.**

[For information concerning historical counts and geographic change, see "User Notes." For information on confidentiality, nonsampling error, and definitions, see Appendixes]

State County/County Equivalent County Subdivision Place	Population			Housing units			Area measurements in square miles		Average per square mile of land	
	2010	2000	1990	2010	2000	1990	Total area	Land area	Population density	Housing unit density
<b>Nevada—Con.</b>										
Lyon County . . . . .	51,980	34,501	20,001	22,547	14,279	8,722	2,024.20	2,001.19	26.0	11.3
Dayton CCD . . . . .	15,276	9,682	4,321	6,412	3,794	1,804	213.54	213.42	71.6	30.0
Dayton CDP . . . . .	8,964	5,907	2,217	3,766	2,322	920	31.82	31.81	281.8	118.4
Fernley CCD . . . . .	19,519	8,596	5,188	8,033	3,452	2,049	184.61	177.75	109.8	45.2
Fernley city . . . . .	19,368	8,543	5,164	7,975	3,432	2,030	128.86	122.12	158.6	65.3
Silver Springs CCD . . . . .	7,629	6,691	3,261	3,508	2,776	1,482	510.96	499.42	15.3	7.0
Silver Springs CDP . . . . .	5,296	4,708	2,253	2,456	1,935	1,081	77.11	71.60	74.0	34.3
Stagecoach CDP . . . . .	1,874	(X)	(X)	840	(X)	(X)	8.35	8.35	224.4	100.6
Smith Valley CCD . . . . .	1,670	1,564	1,139	840	697	503	572.74	569.21	2.9	1.5
Smith Valley CDP . . . . .	1,603	1,425	1,033	800	609	438	122.55	120.62	13.3	6.6
Yerington CCD . . . . .	7,886	7,968	6,092	3,754	3,560	2,884	542.36	541.38	14.6	6.9
Yerington city . . . . .	3,048	2,883	2,367	1,507	1,359	1,123	8.60	8.60	354.4	175.2
Mineral County . . . . .	4,772	5,071	6,475	2,830	2,866	2,994	3,812.98	3,752.84	1.3	0.8
Hawthorne CCD . . . . .	3,789	3,928	5,169	2,225	2,239	2,364	993.05	941.01	4.0	2.4
Hawthorne CDP . . . . .	3,269	3,311	4,162	1,864	1,883	1,858	1.62	1.62	2,017.9	1,150.6
Walker Lake CDP . . . . .	275	(X)	(X)	226	(X)	(X)	1.36	1.36	202.2	166.2
Mina CCD . . . . .	233	284	484	240	279	331	1,650.29	1,648.95	0.1	0.1
Mina CDP . . . . .	155	(X)	(X)	158	(X)	(X)	2.41	2.41	64.3	65.6
Walker River CCD . . . . .	750	859	822	365	348	299	1,169.63	1,162.88	0.6	0.3
Schurz CDP . . . . .	658	721	617	322	312	249	58.54	57.74	11.4	5.6
Nye County . . . . .	43,946	32,485	17,781	22,350	15,934	8,073	18,198.61	18,181.92	2.4	1.2
Amargosa Valley CCD . . . . .	1,456	1,176	786	711	541	334	527.63	527.57	2.8	1.3
Beatty CCD . . . . .	1,032	1,173	1,652	714	752	902	1,077.14	1,074.92	1.0	0.7
Beatty CDP . . . . .	1,010	1,154	1,623	700	740	869	174.14	174.11	5.8	4.0
Duckwater CCD . . . . .	228	250	298	163	154	215	4,348.61	4,346.18	0.1	—
Gabbs CCD . . . . .	525	503	812	298	281	359	1,780.31	1,779.47	0.3	0.2
Gabbs CDP . . . . .	269	318	667	183	183	290	2.25	2.25	119.6	81.3
Pahrump CCD . . . . .	36,583	17,601	7,425	17,918	8,351	3,508	716.91	716.74	51.0	25.0
Pahrump CDP . . . . .	36,441	17,601	7,409	17,824	8,351	3,501	301.88	301.73	120.8	59.1
Ralston Valley CCD . . . . .	48	39	122	40	24	62	2,880.70	2,879.01	—	—
Round Mountain CCD . . . . .	1,577	1,825	1,923	910	872	891	2,560.13	2,557.28	0.6	0.4
Tonopah CCD . . . . .	2,497	2,783	3,680	1,596	1,589	1,753	120.67	120.67	20.7	13.2
Tonopah CDP . . . . .	2,478	2,627	3,616	1,576	1,561	1,713	16.24	16.24	152.6	97.0
Yucca Flat CCD . . . . .	—	—	1,016	—	—	—	4,186.51	4,180.10	—	—
Pershing County . . . . .	6,753	6,693	4,336	2,464	2,389	1,908	6,067.43	6,036.56	1.1	0.4
Imlay CCD . . . . .	1,914	1,912	1,104	926	885	546	4,242.60	4,217.93	0.5	0.2
Grass Valley CDP . . . . .	1,161	(X)	(X)	466	(X)	(X)	34.51	34.51	33.6	13.5
Humboldt River Ranch CDP . . . . .	119	(X)	(X)	70	(X)	(X)	12.87	12.87	9.2	5.4
Imlay CDP . . . . .	171	(X)	(X)	113	(X)	(X)	1.18	1.18	144.9	95.8
Lovelock CCD . . . . .	4,839	4,781	3,232	1,538	1,504	1,362	1,824.82	1,818.63	2.7	0.8
Lovelock city . . . . .	1,894	2,003	2,069	945	951	892	0.85	0.85	2,228.2	1,111.8
Storey County . . . . .	4,010	3,399	2,526	1,990	1,596	1,085	263.64	262.92	15.3	7.6
Clark CCD . . . . .	1,123	882	700	558	461	292	133.68	133.23	8.4	4.2
Virginia City CCD . . . . .	2,887	2,517	1,826	1,432	1,135	793	129.97	129.69	22.3	11.0
Virginia City CDP . . . . .	855	(X)	(X)	488	(X)	(X)	0.87	0.87	982.8	560.9
Washoe County . . . . .	421,407	339,486	254,667	184,841	143,908	112,193	6,542.21	6,302.37	66.9	29.3
High Desert CCD . . . . .	567	912	(X)	418	487	(X)	4,405.78	4,389.64	0.1	0.1
Empire CDP . . . . .	217	(X)	(X)	126	(X)	(X)	5.13	5.13	42.3	24.6
Gerlach CDP . . . . .	206	(X)	(X)	151	(X)	(X)	3.13	3.13	65.8	48.2
Incline Village CCD . . . . .	9,087	9,952	7,567	7,954	7,664	6,774	46.96	25.43	357.3	312.8
Crystal Bay CDP . . . . .	305	(X)	(X)	285	(X)	(X)	0.78	0.45	677.8	633.3
Incline Village CDP (part) . . . . .	8,777	(X)	(X)	7,667	(X)	(X)	18.43	18.22	481.7	420.8
North Valleys CCD . . . . .	51,813	34,002	(X)	19,127	12,155	(X)	266.72	262.78	197.2	72.8
Cold Springs CDP . . . . .	8,544	3,834	(X)	3,210	1,382	(X)	8.75	8.75	976.5	366.9
Golden Valley CDP . . . . .	1,556	(X)	(X)	619	(X)	(X)	3.61	3.61	431.0	171.5
Lemmon Valley CDP . . . . .	5,040	(X)	(X)	1,897	(X)	(X)	18.40	17.19	293.2	110.4
Reno city (part) . . . . .	31,710	18,379	(X)	11,299	6,365	(X)	38.00	35.49	893.5	318.4
Pyramid Lake CCD . . . . .	1,654	1,714	1,438	694	668	620	901.91	713.81	2.3	1.0
Nixon CDP . . . . .	374	418	(X)	142	144	(X)	6.32	6.32	59.2	22.5
Sutcliffe CDP . . . . .	253	281	(X)	120	113	(X)	10.00	10.00	25.3	12.0
Wadsworth CDP . . . . .	834	881	640	350	360	292	3.72	3.72	224.2	94.1
Reno North CCD . . . . .	81,633	71,163	(X)	38,187	30,938	(X)	21.75	21.66	3,768.8	1,763.0
Mogul CDP (part) . . . . .	116	(X)	(X)	40	(X)	(X)	0.40	0.40	290.0	100.0
Reno city (part) . . . . .	79,336	67,667	(X)	37,329	29,621	(X)	18.49	18.40	4,311.7	2,028.8
Sparks city (part) . . . . .	2,099	2,153	(X)	785	828	(X)	0.29	0.29	7,237.9	2,706.9

Table 8.

**Population and Housing Units: 1990 to 2010; and Area Measurements and Density: 2010—Con.**

[For information concerning historical counts and geographic change, see "User Notes." For information on confidentiality, nonsampling error, and definitions, see Appendixes]

State County/County Equivalent County Subdivision Place	Population			Housing units			Area measurements in square miles		Average per square mile of land	
	2010	2000	1990	2010	2000	1990	Total area	Land area	Population density	Housing unit density
<b>Nevada—Con.</b>										
Washoe County—Con.										
Reno Southeast CCD	69,660	54,622	(X)	31,368	24,178	(X)	46.89	46.76	1,489.7	670.8
Reno city (part)	64,473	49,489	(X)	29,159	22,146	(X)	22.88	22.76	2,832.7	1,281.2
Reno Southwest CCD	57,544	53,634	(X)	27,610	24,483	(X)	145.26	145.13	396.5	190.2
Incline Village CDP (part)	—	(X)	(X)	—	(X)	(X)	3.30	3.30	—	—
Reno city (part)	43,089	43,073	(X)	21,800	20,427	(X)	15.10	15.00	2,872.6	1,453.3
Sparks CCD	57,101	55,794	(X)	23,697	21,901	(X)	16.26	16.25	3,513.9	1,458.3
Reno city (part)	—	(X)	(X)	—	(X)	(X)	—	—	—	—
Sparks city (part)	56,480	55,186	(X)	23,432	21,668	(X)	15.08	15.08	3,745.4	1,553.8
Sun Valley CCD	20,337	21,002	(X)	7,182	7,464	(X)	15.13	15.13	1,344.2	474.7
Reno city (part)	2,330	1,631	(X)	991	802	(X)	1.02	1.02	2,284.3	971.6
Sparks city (part)	18	42	(X)	5	10	(X)	0.30	0.30	60.0	16.7
Sun Valley CDP (part)	17,989	19,329	(X)	6,186	6,652	(X)	13.79	13.79	1,304.5	448.6
Verdi CCD	6,892	3,193	(X)	3,182	1,306	(X)	27.06	26.82	257.0	118.6
Mogul CDP (part)	1,174	(X)	(X)	483	(X)	(X)	1.08	1.07	1,097.2	451.4
Reno city (part)	4,283	241	(X)	2,004	92	(X)	10.21	10.17	421.1	197.1
Verdi CDP	1,415	(X)	(X)	686	(X)	(X)	3.49	3.37	419.9	203.6
Warm Springs-Truckee Canyon CCD	52,378	22,054	(X)	19,983	8,151	(X)	515.44	514.85	101.7	38.8
Spanish Springs CDP	15,064	9,018	(X)	5,619	3,078	(X)	55.99	55.66	270.6	101.0
Sparks city (part)	31,667	8,965	(X)	12,233	3,519	(X)	20.25	20.08	1,577.0	609.2
Sun Valley CDP (part)	1,310	132	(X)	462	51	(X)	1.11	1.11	1,180.2	416.2
Washoe Valley CCD	12,741	11,444	(X)	5,439	4,513	(X)	133.06	124.10	102.7	43.8
Reno city (part)	—	(X)	(X)	—	(X)	(X)	0.18	0.18	—	—
Washoe Valley CDP	3,019	(X)	(X)	1,311	(X)	(X)	5.04	5.04	599.0	260.1
White Pine County	10,030	9,181	9,264	4,498	4,439	3,982	8,896.76	8,875.65	1.1	0.5
Baker CCD	363	382	337	222	237	265	3,319.36	3,305.26	0.1	0.1
Baker CDP	68	(X)	(X)	38	(X)	(X)	0.91	0.90	75.6	42.2
Cherry Creek CCD	72	93	153	101	136	144	2,440.44	2,434.12	—	—
Ely CCD	5,941	5,535	5,846	2,909	2,847	2,437	539.94	539.73	11.0	5.4
Ely city	4,255	4,041	4,756	2,185	2,205	2,098	7.64	7.64	556.9	286.0
Lund CCD	538	372	476	230	202	207	1,625.88	1,625.80	0.3	0.1
Lund CDP	282	(X)	(X)	115	(X)	(X)	1.70	1.70	165.9	67.6
Preston CDP	78	(X)	(X)	39	(X)	(X)	1.18	1.18	66.1	33.1
McGill CCD	1,447	2,293	1,900	742	727	689	721.31	720.89	2.0	1.0
McGill CDP	1,148	1,054	1,258	582	599	576	1.09	1.09	1,053.2	533.9
Ruth CCD	1,669	506	552	294	290	240	249.83	249.83	6.7	1.2
Ruth CDP	440	(X)	(X)	247	(X)	(X)	0.35	0.35	1,257.1	705.7
Carson City	55,274	52,457	40,443	23,534	21,283	16,628	157.24	144.66	382.1	162.7
Carson City CCD	55,274	52,457	40,443	23,534	21,283	16,628	157.24	144.66	382.1	162.7
Carson City	55,274	52,457	40,443	23,534	21,283	16,628	157.24	144.66	382.1	162.7



Table 9.

**Population and Housing Units: 1990 to 2010; and Area Measurements and Density: 2010**

[For information concerning historical counts and geographic change, see "User Notes." For information on confidentiality, nonsampling error, and definitions, see Appendixes]

State Place and [in Selected States] County Subdivision	Population				Housing units			
	2010	2000	1990	Percent change 2000 to 2010	2010	2000	1990	Percent change 2000 to 2010
<b>Nevada</b> .....	<b>2,700,551</b>	<b>1,998,257</b>	<b>1,201,675</b>	<b>35.1</b>	<b>1,173,814</b>	<b>827,457</b>	<b>518,777</b>	<b>41.9</b>
Alamo CDP, Lincoln County .....	1,080	(X)	(X)	(X)	457	(X)	(X)	(X)
Austin CDP, Lander County .....	192	(X)	(X)	(X)	162	(X)	(X)	(X)
Baker CDP, White Pine County .....	68	(X)	(X)	(X)	38	(X)	(X)	(X)
Battle Mountain CDP, Lander County .....	3,635	2,871	3,542	26.6	1,518	1,455	1,431	4.3
Beatty CDP, Nye County .....	1,010	1,154	1,623	-12.5	700	740	869	-5.4
Beaverdam CDP, Lincoln County .....	44	(X)	(X)	(X)	26	(X)	(X)	(X)
Bennett Springs CDP, Lincoln County .....	132	(X)	(X)	(X)	69	(X)	(X)	(X)
Blue Diamond CDP, Clark County .....	290	282	(X)	2.8	135	125	(X)	8.0
Boulder City city, Clark County .....	15,023	14,966	12,567	0.4	7,412	6,979	5,390	6.2
Bunkerville CDP, Clark County .....	1,303	1,014	(X)	28.5	381	277	(X)	37.5
Caliente city, Lincoln County .....	1,130	1,123	1,111	0.6	530	479	449	10.6
Cal-Nev-Ari CDP, Clark County .....	244	278	(X)	-12.2	168	199	(X)	-15.6
Carlin city, Elko County .....	2,368	2,161	2,220	9.6	1,043	1,014	888	2.9
Carson City, Carson City .....	55,274	52,457	40,443	5.4	23,534	21,283	16,628	10.6
Carter Springs CDP, Douglas County .....	553	(X)	(X)	(X)	241	(X)	(X)	(X)
Cold Springs CDP, Washoe County .....	8,544	3,834	(X)	122.8	3,210	1,382	(X)	132.3
Crescent Valley CDP, Eureka County .....	392	(X)	(X)	(X)	237	(X)	(X)	(X)
Crystal Bay CDP, Washoe County .....	305	(X)	(X)	(X)	285	(X)	(X)	(X)
Dayton CDP, Lyon County .....	8,964	5,907	2,217	51.8	3,766	2,322	920	62.2
Denio CDP, Humboldt County .....	47	(X)	(X)	(X)	44	(X)	(X)	(X)
Double Spring CDP, Douglas County .....	158	(X)	(X)	(X)	71	(X)	(X)	(X)
Dry Valley CDP, Lincoln County .....	78	(X)	(X)	(X)	33	(X)	(X)	(X)
Dyer CDP, Esmeralda County .....	259	(X)	(X)	(X)	183	(X)	(X)	(X)
East Valley CDP, Douglas County .....	1,474	(X)	(X)	(X)	666	(X)	(X)	(X)
Elko city, Elko County .....	18,297	16,708	14,836	9.5	7,221	6,948	5,887	3.9
Ely city, White Pine County .....	4,255	4,041	4,756	5.3	2,185	2,205	2,098	-0.9
Empire CDP, Washoe County .....	217	(X)	(X)	(X)	126	(X)	(X)	(X)
Enterprise CDP, Clark County .....	108,481	14,676	6,412	639.2	49,563	6,609	2,506	649.9
Eureka CDP, Eureka County .....	610	(X)	(X)	(X)	346	(X)	(X)	(X)
Fallon city, Churchill County .....	8,606	7,536	6,430	14.2	3,979	3,336	2,760	19.3
Fallon Station CDP, Churchill County .....	705	1,265	1,092	-44.3	229	360	300	-36.4
Fernley city, Lyon County .....	19,368	8,543	5,164	126.7	7,975	3,432	2,030	132.4
Fish Springs CDP, Douglas County .....	648	(X)	(X)	(X)	275	(X)	(X)	(X)
Fort McDermitt CDP, Humboldt County .....	341	269	373	26.8	125	107	133	16.8
Gabbs CDP, Nye County .....	269	318	667	-15.4	183	183	290	-
Gardnerville CDP, Douglas County .....	5,656	3,357	2,177	68.5	2,687	1,556	1,051	72.7
Gardnerville Ranchos CDP, Douglas County .....	11,312	11,054	7,455	2.3	4,745	4,123	2,810	15.1
Genoa CDP, Douglas County .....	939	(X)	(X)	(X)	581	(X)	(X)	(X)
Gerlach CDP, Washoe County .....	206	(X)	(X)	(X)	151	(X)	(X)	(X)
Glenbrook CDP, Douglas County .....	215	(X)	(X)	(X)	373	(X)	(X)	(X)
Golconda CDP, Humboldt County .....	214	(X)	(X)	(X)	129	(X)	(X)	(X)
Golden Valley CDP, Washoe County .....	1,556	(X)	(X)	(X)	619	(X)	(X)	(X)
Goldfield CDP, Esmeralda County .....	268	(X)	(X)	(X)	321	(X)	(X)	(X)
Goodsprings CDP, Clark County .....	229	232	(X)	-1.3	124	122	(X)	1.6
Grass Valley CDP, Pershing County .....	1,161	(X)	(X)	(X)	466	(X)	(X)	(X)
Hawthorne CDP, Mineral County .....	3,269	3,311	4,162	-1.3	1,864	1,883	1,858	-1.0
Henderson city, Clark County .....	257,729	175,381	64,948	47.0	113,586	71,149	25,404	59.6
Hiko CDP, Lincoln County .....	119	(X)	(X)	(X)	50	(X)	(X)	(X)
Humboldt River Ranch CDP, Pershing County .....	119	(X)	(X)	(X)	70	(X)	(X)	(X)
Imlay CDP, Pershing County .....	171	(X)	(X)	(X)	113	(X)	(X)	(X)
Incline Village CDP, Washoe County .....	8,777	(X)	(X)	(X)	7,667	(X)	(X)	(X)
Indian Hills CDP, Douglas County .....	5,627	4,407	2,544	27.7	2,394	1,737	963	37.8
Indian Springs CDP, Clark County .....	991	1,302	1,164	-23.9	548	657	510	-16.6
Jackpot CDP, Elko County .....	1,195	(X)	(X)	(X)	622	(X)	(X)	(X)
Johnson Lane CDP, Douglas County .....	6,490	4,837	2,551	34.2	2,643	1,829	943	44.5
Kingsbury CDP, Douglas County .....	2,152	2,624	2,238	-18.0	1,868	1,925	2,154	-3.0
Kingston CDP, Lander County .....	113	(X)	(X)	(X)	124	(X)	(X)	(X)
Lakeridge CDP, Douglas County .....	371	(X)	(X)	(X)	355	(X)	(X)	(X)
Lamoille CDP, Elko County .....	105	(X)	(X)	(X)	75	(X)	(X)	(X)
Las Vegas city, Clark County .....	583,756	479,137	258,204	21.8	243,701	190,724	109,616	27.8
Laughlin CDP, Clark County .....	7,323	7,076	4,791	3.5	4,966	4,127	2,637	20.3
Lemmon Valley CDP, Washoe County .....	5,040	(X)	(X)	(X)	1,897	(X)	(X)	(X)
Logan Creek CDP, Douglas County .....	26	(X)	(X)	(X)	31	(X)	(X)	(X)
Lovelock city, Pershing County .....	1,894	2,003	2,069	-5.4	945	951	892	-0.6
Lund CDP, White Pine County .....	282	(X)	(X)	(X)	115	(X)	(X)	(X)
McDermitt CDP, Humboldt County .....	172	(X)	(X)	(X)	101	(X)	(X)	(X)
McGill CDP, White Pine County .....	1,148	1,054	1,258	8.9	582	599	576	-2.8
Mesquite city, Clark County .....	15,276	9,389	1,871	62.7	8,911	4,442	684	100.6
Mina CDP, Mineral County .....	155	(X)	(X)	(X)	158	(X)	(X)	(X)
Minden CDP, Douglas County .....	3,001	2,836	1,441	5.8	1,479	1,231	688	20.1

Table 9.

**Population and Housing Units: 1990 to 2010; and Area Measurements and Density: 2010—Con.**

[For information concerning historical counts and geographic change, see "User Notes." For information on confidentiality, nonsampling error, and definitions, see Appendixes]

Area measurements in square miles		Average per square mile of land		State Place and [in Selected States] County Subdivision
Total area	Land area	Population density	Housing unit density	
<b>110,571.82</b>	<b>109,781.18</b>	<b>24.6</b>	<b>10.7</b>	<b>Nevada</b>
30.28	30.28	35.7	15.1	Alamo CDP, Lincoln County
1.12	1.12	171.4	144.6	Austin CDP, Lander County
0.91	0.90	75.6	42.2	Baker CDP, White Pine County
3.57	3.57	1,018.2	425.2	Battle Mountain CDP, Lander County
174.14	174.11	5.8	4.0	Beatty CDP, Nye County
3.85	3.85	11.4	6.8	Beaverdam CDP, Lincoln County
11.86	11.86	11.1	5.8	Bennett Springs CDP, Lincoln County
7.22	7.22	40.2	18.7	Blue Diamond CDP, Clark County
208.56	208.52	72.0	35.5	Boulder City city, Clark County
43.27	42.78	30.5	8.9	Bunkerville CDP, Clark County
1.87	1.87	604.3	283.4	Caliente city, Lincoln County
2.27	2.27	107.5	74.0	Cal-Nev-Ari CDP, Clark County
10.44	10.44	226.8	99.9	Carlin city, Elko County
157.24	144.66	382.1	162.7	Carson City, Carson City
2.80	2.80	197.5	86.1	Carter Springs CDP, Douglas County
8.75	8.75	976.5	366.9	Cold Springs CDP, Washoe County
2.23	2.23	175.8	106.3	Crescent Valley CDP, Eureka County
0.78	0.45	677.8	633.3	Crystal Bay CDP, Washoe County
31.82	31.81	281.8	118.4	Dayton CDP, Lyon County
16.12	16.12	2.9	2.7	Denio CDP, Humboldt County
8.77	8.77	18.0	8.1	Double Spring CDP, Douglas County
3.79	3.79	20.6	8.7	Dry Valley CDP, Lincoln County
32.58	32.49	8.0	5.6	Dyer CDP, Esmeralda County
9.53	9.40	156.8	70.9	East Valley CDP, Douglas County
17.64	17.64	1,037.2	409.4	Elko city, Elko County
7.64	7.64	556.9	286.0	Ely city, White Pine County
5.13	5.13	42.3	24.6	Empire CDP, Washoe County
46.51	46.51	2,332.4	1,065.6	Enterprise CDP, Clark County
1.40	1.40	435.7	247.1	Eureka CDP, Eureka County
3.65	3.63	2,370.8	1,096.1	Fallon city, Churchill County
2.47	2.47	285.4	92.7	Fallon Station CDP, Churchill County
128.86	122.12	158.6	65.3	Fernley city, Lyon County
9.19	9.19	70.5	29.9	Fish Springs CDP, Douglas County
17.93	17.93	19.0	7.0	Fort McDermitt CDP, Humboldt County
2.25	2.25	119.6	81.3	Gabbs CDP, Nye County
4.80	4.80	1,178.3	559.8	Gardnerville CDP, Douglas County
15.02	15.02	753.1	315.9	Gardnerville Ranchos CDP, Douglas County
9.19	9.19	102.2	63.2	Genoa CDP, Douglas County
3.13	3.13	65.8	48.2	Gerlach CDP, Washoe County
4.01	3.79	56.7	98.4	Glenbrook CDP, Douglas County
9.04	9.04	23.7	14.3	Golconda CDP, Humboldt County
3.61	3.61	431.0	171.5	Golden Valley CDP, Washoe County
1.48	1.48	181.1	216.9	Goldfield CDP, Esmeralda County
1.43	1.43	160.1	86.7	Goodsprings CDP, Clark County
34.51	34.51	33.6	13.5	Grass Valley CDP, Pershing County
1.62	1.62	2,017.9	1,150.6	Hawthorne CDP, Mineral County
107.73	107.73	2,392.4	1,054.4	Henderson city, Clark County
23.74	23.41	5.1	2.1	Hiko CDP, Lincoln County
12.87	12.87	9.2	5.4	Humboldt River Ranch CDP, Pershing County
1.18	1.18	144.9	95.8	Imlay CDP, Pershing County
21.74	21.53	407.7	356.1	Incline Village CDP, Washoe County
14.61	14.61	385.1	163.9	Indian Hills CDP, Douglas County
18.01	18.01	55.0	30.4	Indian Springs CDP, Clark County
3.93	3.88	308.0	160.3	Jackpot CDP, Elko County
21.88	21.87	296.8	120.9	Johnson Lane CDP, Douglas County
21.81	21.81	98.7	85.6	Kingsbury CDP, Douglas County
4.07	4.07	27.8	30.5	Kingston CDP, Lander County
1.53	1.46	254.1	243.2	Lakeridge CDP, Douglas County
1.84	1.84	57.1	40.8	Lamoille CDP, Elko County
135.87	135.81	4,298.3	1,794.4	Las Vegas city, Clark County
89.39	88.04	83.2	56.4	Laughlin CDP, Clark County
18.40	17.19	293.2	110.4	Lemmon Valley CDP, Washoe County
1.81	1.75	14.9	17.7	Logan Creek CDP, Douglas County
0.85	0.85	2,228.2	1,111.8	Lovelock city, Pershing County
1.70	1.70	165.9	67.6	Lund CDP, White Pine County
3.28	3.28	52.4	30.8	McDermitt CDP, Humboldt County
1.09	1.09	1,053.2	533.9	McGill CDP, White Pine County
32.35	31.89	479.0	279.4	Mesquite city, Clark County
2.41	2.41	64.3	65.6	Mina CDP, Mineral County
4.25	4.23	709.5	349.6	Minden CDP, Douglas County

Table 9.

**Population and Housing Units: 1990 to 2010; and Area Measurements and Density: 2010—Con.**

[For information concerning historical counts and geographic change, see "User Notes." For information on confidentiality, nonsampling error, and definitions, see Appendixes]

State Place and [in Selected States] County Subdivision	Population				Housing units			
	2010	2000	1990	Percent change 2000 to 2010	2010	2000	1990	Percent change 2000 to 2010
Moapa Town CDP, Clark County . . . . .	1,025	928	(X)	10.5	379	310	(X)	22.3
Moapa Valley CDP, Clark County . . . . .	6,924	5,784	3,444	19.7	2,793	2,213	1,415	26.2
Mogul CDP, Washoe County . . . . .	1,290	(X)	(X)	(X)	523	(X)	(X)	(X)
Montello CDP, Elko County . . . . .	84	(X)	(X)	(X)	89	(X)	(X)	(X)
Mount Charleston CDP, Clark County . . . . .	357	285	(X)	25.3	504	362	(X)	39.2
Mount Wilson CDP, Lincoln County . . . . .	33	(X)	(X)	(X)	75	(X)	(X)	(X)
Nellis AFB CDP, Clark County . . . . .	3,187	8,896	8,377	-64.2	1,068	3,040	2,065	-64.9
Nelson CDP, Clark County . . . . .	37	(X)	(X)	(X)	43	(X)	(X)	(X)
Nixon CDP, Washoe County . . . . .	374	418	(X)	-10.5	142	144	(X)	-1.4
North Las Vegas city, Clark County . . . . .	216,961	115,488	47,849	87.9	76,073	36,600	15,881	107.8
Oasis CDP, Elko County . . . . .	29	(X)	(X)	(X)	20	(X)	(X)	(X)
Orovada CDP, Humboldt County . . . . .	155	(X)	(X)	(X)	96	(X)	(X)	(X)
Osino CDP, Elko County . . . . .	709	(X)	(X)	(X)	239	(X)	(X)	(X)
Owyhee CDP, Elko County . . . . .	953	1,017	908	-6.3	393	371	353	5.9
Pahrump CDP, Nye County . . . . .	36,441	24,631	7,424	47.9	17,824	11,651	3,509	53.0
Panaca CDP, Lincoln County . . . . .	963	(X)	(X)	(X)	426	(X)	(X)	(X)
Paradise CDP, Clark County . . . . .	223,167	186,070	124,682	19.9	114,296	85,398	63,924	33.8
Paradise Valley CDP, Humboldt County . . . . .	109	(X)	(X)	(X)	92	(X)	(X)	(X)
Pioche CDP, Lincoln County . . . . .	1,002	(X)	(X)	(X)	564	(X)	(X)	(X)
Preston CDP, White Pine County . . . . .	78	(X)	(X)	(X)	39	(X)	(X)	(X)
Rachel CDP, Lincoln County . . . . .	54	(X)	(X)	(X)	45	(X)	(X)	(X)
Reno city, Washoe County . . . . .	225,221	180,480	133,850	24.8	102,582	79,453	61,384	29.1
Round Hill Village CDP, Douglas County . . . . .	759	(X)	(X)	(X)	773	(X)	(X)	(X)
Ruhenstroth CDP, Douglas County . . . . .	1,293	(X)	(X)	(X)	556	(X)	(X)	(X)
Ruth CDP, White Pine County . . . . .	440	(X)	(X)	(X)	247	(X)	(X)	(X)
Sandy Valley CDP, Clark County . . . . .	2,051	1,804	(X)	13.7	1,024	811	(X)	26.3
Schurz CDP, Mineral County . . . . .	658	721	617	-8.7	322	312	249	3.2
Searchlight CDP, Clark County . . . . .	539	576	(X)	-6.4	461	444	(X)	3.8
Silver Peak CDP, Esmeralda County . . . . .	107	(X)	(X)	(X)	133	(X)	(X)	(X)
Silver Springs CDP, Lyon County . . . . .	5,296	4,708	2,253	12.5	2,456	1,935	1,061	26.9
Skyland CDP, Douglas County . . . . .	376	(X)	(X)	(X)	265	(X)	(X)	(X)
Smith Valley CDP, Lyon County . . . . .	1,603	1,425	1,033	12.5	800	609	438	31.4
Spanish Springs CDP, Washoe County . . . . .	15,064	9,018	(X)	67.0	5,619	3,078	(X)	82.6
Sparks city, Washoe County . . . . .	90,264	66,346	53,367	36.1	36,455	26,025	21,660	40.1
Spring Creek CDP, Elko County . . . . .	12,361	10,548	5,866	17.2	4,394	3,660	1,914	20.1
Spring Valley CDP, Clark County . . . . .	178,395	117,390	51,726	52.0	83,678	52,870	22,236	58.3
Stagecoach CDP, Lyon County . . . . .	1,874	(X)	(X)	(X)	840	(X)	(X)	(X)
Stateline CDP, Douglas County . . . . .	842	1,215	1,379	-30.7	463	562	637	-17.6
Summerlin South CDP, Clark County . . . . .	24,085	3,735	(X)	544.8	11,542	1,755	(X)	557.7
Sunrise Manor CDP, Clark County . . . . .	189,372	156,120	95,362	21.3	70,255	58,410	37,264	20.3
Sun Valley CDP, Washoe County . . . . .	19,299	19,461	11,391	-0.8	6,648	6,703	4,257	-0.8
Sutcliffe CDP, Washoe County . . . . .	253	281	(X)	-10.0	120	113	(X)	6.2
Tonopah CDP, Nye County . . . . .	2,478	2,627	3,616	-5.7	1,576	1,561	1,713	1.0
Topaz Lake CDP, Douglas County . . . . .	157	(X)	(X)	(X)	142	(X)	(X)	(X)
Topaz Ranch Estates CDP, Douglas County . . . . .	1,501	(X)	(X)	(X)	829	(X)	(X)	(X)
Ursine CDP, Lincoln County . . . . .	91	(X)	(X)	(X)	87	(X)	(X)	(X)
Valmy CDP, Humboldt County . . . . .	37	(X)	(X)	(X)	35	(X)	(X)	(X)
Verdi CDP, Washoe County . . . . .	1,415	(X)	(X)	(X)	686	(X)	(X)	(X)
Virginia City CDP, Storey County . . . . .	855	(X)	(X)	(X)	488	(X)	(X)	(X)
Wadsworth CDP, Washoe County . . . . .	834	881	640	-5.3	350	360	292	-2.8
Walker Lake CDP, Mineral County . . . . .	275	(X)	(X)	(X)	226	(X)	(X)	(X)
Washoe Valley CDP, Washoe County . . . . .	3,019	(X)	(X)	(X)	1,311	(X)	(X)	(X)
Wells city, Elko County . . . . .	1,292	1,346	1,256	-4.0	641	633	562	1.3
West Wendover city, Elko County . . . . .	4,410	4,721	(X)	-6.6	1,504	1,626	(X)	-7.5
Whitney CDP, Clark County . . . . .	38,585	18,273	(X)	111.2	16,420	7,849	(X)	109.2
Winchester CDP, Clark County . . . . .	27,978	26,958	23,365	3.8	14,969	13,535	12,485	10.6
Winnemucca city, Humboldt County . . . . .	7,396	7,174	6,102	3.1	3,214	3,280	2,429	-2.0
Yerington city, Lyon County . . . . .	3,048	2,883	2,367	5.7	1,507	1,359	1,123	10.9
Zephyr Cove CDP, Douglas County . . . . .	565	(X)	(X)	(X)	663	(X)	(X)	(X)



Table 9.

**Population and Housing Units: 1990 to 2010; and Area Measurements and Density: 2010—Con.**

[For information concerning historical counts and geographic change, see "User Notes." For information on confidentiality, nonsampling error, and definitions, see Appendixes]

Area measurements in square miles		Average per square mile of land		State Place and [in Selected States] County Subdivision
Total area	Land area	Population density	Housing unit density	
150.82	150.82	6.8	2.5	Moapa Town CDP, Clark County
43.70	43.67	158.6	64.0	Moapa Valley CDP, Clark County
1.48	1.47	877.6	355.8	Mogul CDP, Washoe County
0.40	0.40	210.0	222.5	Montello CDP, Elko County
29.29	29.29	12.2	17.2	Mount Charleston CDP, Clark County
4.61	4.61	7.2	16.3	Mount Wilson CDP, Lincoln County
2.71	2.71	1,176.0	394.1	Nellis AFB CDP, Clark County
4.80	4.80	7.7	9.0	Nelson CDP, Clark County
6.32	6.32	59.2	22.5	Nixon CDP, Washoe County
101.39	101.35	2,140.7	750.6	North Las Vegas city, Clark County
0.89	0.89	32.6	22.5	Oasis CDP, Elko County
45.30	45.30	3.4	2.1	Orovada CDP, Humboldt County
2.48	2.48	285.9	96.4	Osino CDP, Elko County
225.91	225.30	4.2	1.7	Owyhee CDP, Elko County
301.88	301.73	120.8	59.1	Pahrump CDP, Nye County
3.26	3.26	295.4	130.7	Panaca CDP, Lincoln County
46.72	46.72	4,776.7	2,446.4	Paradise CDP, Clark County
15.95	15.94	6.8	5.8	Paradise Valley CDP, Humboldt County
6.15	6.15	162.9	91.7	Pioche CDP, Lincoln County
1.18	1.18	66.1	33.1	Preston CDP, White Pine County
7.63	7.63	7.1	5.9	Rachel CDP, Lincoln County
105.88	103.01	2,186.4	995.8	Reno city, Washoe County
5.92	5.79	131.1	133.5	Round Hill Village CDP, Douglas County
2.81	2.81	460.1	197.9	Ruhenstroth CDP, Douglas County
0.35	0.35	1,257.1	705.7	Ruth CDP, White Pine County
56.00	56.00	36.6	18.3	Sandy Valley CDP, Clark County
58.54	57.74	11.4	5.6	Schurz CDP, Mineral County
13.13	13.13	41.1	35.1	Searchlight CDP, Clark County
0.99	0.99	108.1	134.3	Silver Peak CDP, Esmeralda County
77.11	71.60	74.0	34.3	Silver Springs CDP, Lyon County
4.46	4.36	86.2	60.8	Skyland CDP, Douglas County
122.55	120.62	13.3	6.6	Smith Valley CDP, Lyon County
55.99	55.66	270.6	101.0	Spanish Springs CDP, Washoe County
35.93	35.76	2,524.2	1,019.4	Sparks city, Washoe County
58.84	58.77	210.3	74.8	Spring Creek CDP, Elko County
33.23	33.23	5,368.5	2,518.1	Spring Valley CDP, Clark County
8.35	8.35	224.4	100.6	Stagecoach CDP, Lyon County
0.82	0.72	1,169.4	643.1	Stateline CDP, Douglas County
9.64	9.64	2,498.4	1,197.3	Summerlin South CDP, Clark County
33.35	33.35	5,678.3	2,106.6	Sunrise Manor CDP, Clark County
14.90	14.90	1,295.2	446.2	Sun Valley CDP, Washoe County
10.00	10.00	25.3	12.0	Sutcliffe CDP, Washoe County
16.24	16.24	152.6	97.0	Tonopah CDP, Nye County
1.69	1.19	131.9	119.3	Topaz Lake CDP, Douglas County
14.39	14.39	104.3	57.6	Topaz Ranch Estates CDP, Douglas County
4.34	4.34	21.0	20.0	Ursine CDP, Lincoln County
3.66	3.66	10.1	9.6	Valmy CDP, Humboldt County
3.49	3.37	419.9	203.6	Verdi CDP, Washoe County
0.87	0.87	982.8	560.9	Virginia City CDP, Storey County
3.72	3.72	224.2	94.1	Wadsworth CDP, Washoe County
1.36	1.36	202.2	166.2	Walker Lake CDP, Mineral County
5.04	5.04	599.0	260.1	Washoe Valley CDP, Washoe County
6.90	6.90	187.2	92.9	Wells city, Elko County
7.48	7.48	589.6	201.1	West Wendover city, Elko County
6.74	6.74	5,724.8	2,436.2	Whitney CDP, Clark County
4.34	4.34	6,446.5	3,449.1	Winchester CDP, Clark County
9.39	9.39	787.6	342.3	Winnemucca city, Humboldt County
8.60	8.60	354.4	175.2	Yerington city, Lyon County
2.24	2.12	266.5	312.7	Zephyr Cove CDP, Douglas County

Table 10.

**Rank by 2010 Population and Housing Units: 2000 and 2010**

[For information concerning historical counts and geographic change, see "User Notes." For information on confidentiality, nonsampling error, and definitions, see Appendixes]

Place [2,500 or More Population]	Population			Housing units		
	2010 rank	2010	2000	2010 rank	2010	2000
Las Vegas city . . . . .	1	583,756	479,137	1	243,701	190,724
Henderson city . . . . .	2	257,729	175,381	3	113,586	71,149
Reno city . . . . .	3	225,221	180,480	4	102,582	79,453
Paradise CDP . . . . .	4	223,167	186,070	2	114,296	85,398
North Las Vegas city . . . . .	5	216,961	115,488	6	76,073	36,600
Sunrise Manor CDP . . . . .	6	189,372	156,120	7	70,255	58,410
Spring Valley CDP . . . . .	7	178,395	117,390	5	83,678	52,870
Enterprise CDP . . . . .	8	108,481	14,676	8	49,563	6,609
Sparks city . . . . .	9	90,264	66,346	9	36,455	26,025
Carson City . . . . .	10	55,274	52,457	10	23,534	21,283
Whitney CDP . . . . .	11	38,585	18,273	12	16,420	7,849
Pahrump CDP . . . . .	12	36,441	24,631	11	17,824	11,651
Winchester CDP . . . . .	13	27,978	26,958	13	14,969	13,535
Summerlin South CDP . . . . .	14	24,085	3,735	14	11,542	1,755
Fernley city . . . . .	15	19,368	8,543	16	7,975	3,432
Sun Valley CDP . . . . .	16	19,299	19,461	20	6,648	6,703
Elko city . . . . .	17	18,297	16,708	19	7,221	6,948
Mesquite city . . . . .	18	15,276	9,389	15	8,911	4,442
Spanish Springs CDP . . . . .	19	15,064	9,018	21	5,619	3,078
Boulder City city . . . . .	20	15,023	14,966	18	7,412	6,979
Spring Creek CDP . . . . .	21	12,361	10,548	24	4,394	3,660
Gardnerville Ranchos CDP . . . . .	22	11,312	11,054	23	4,745	4,123
Dayton CDP . . . . .	23	8,964	5,907	26	3,766	2,322
Incline Village CDP . . . . .	24	8,777	(X)	17	7,667	(X)
Fallon city . . . . .	25	8,606	7,536	25	3,979	3,336
Cold Springs CDP . . . . .	26	8,544	3,834	28	3,210	1,382
Winnemucca city . . . . .	27	7,396	7,174	27	3,214	3,280
Laughlin CDP . . . . .	28	7,323	7,076	22	4,966	4,127
Moapa Valley CDP . . . . .	29	6,924	5,784	29	2,793	2,213
Johnson Lane CDP . . . . .	30	6,490	4,837	31	2,643	1,829
Gardnerville CDP . . . . .	31	5,656	3,357	30	2,687	1,556
Indian Hills CDP . . . . .	32	5,627	4,407	33	2,394	1,737
Silver Springs CDP . . . . .	33	5,296	4,708	32	2,456	1,935
Lemmon Valley CDP . . . . .	34	5,040	(X)	35	1,897	(X)
West Wendover city . . . . .	35	4,410	4,721	39	1,504	1,626
Ely city . . . . .	36	4,255	4,041	34	2,185	2,205
Battle Mountain CDP . . . . .	37	3,635	2,871	37	1,518	1,455
Hawthorne CDP . . . . .	38	3,269	3,311	36	1,864	1,883
Nellis AFB CDP . . . . .	39	3,187	8,896	42	1,068	3,040
Yerington city . . . . .	40	3,048	2,883	38	1,507	1,359
Washoe Valley CDP . . . . .	41	3,019	(X)	41	1,311	(X)
Minden CDP . . . . .	42	3,001	2,836	40	1,479	1,231

Table 11.

### Rank of Places by Percent Change in Population: 2000 to 2010

[For information concerning historical counts and geographic change, see "User Notes." For information on confidentiality, nonsampling error, and definitions, see Appendixes]

Place [2,500 or More Population]	Population		Percent change	
	2010	2000	Rank	Percent
Enterprise CDP . . . . .	108,481	14,676	1	639.17
Summerlin South CDP . . . . .	24,085	3,735	2	544.85
Fernley city . . . . .	19,368	8,543	3	126.71
Cold Springs CDP . . . . .	8,544	3,834	4	122.85
Whitney CDP . . . . .	38,585	18,273	5	111.16
North Las Vegas city . . . . .	216,961	115,488	6	87.86
Gardnerville CDP . . . . .	5,656	3,357	7	68.48
Spanish Springs CDP . . . . .	15,064	9,018	8	67.04
Mesquite city . . . . .	15,276	9,389	9	62.70
Spring Valley CDP . . . . .	178,395	117,390	10	51.97
Dayton CDP . . . . .	8,964	5,907	11	51.75
Pahrump CDP . . . . .	36,441	24,631	12	47.95
Henderson city . . . . .	257,729	175,381	13	46.95
Sparks city . . . . .	90,264	66,346	14	36.05
Johnson Lane CDP . . . . .	6,490	4,837	15	34.17
Indian Hills CDP . . . . .	5,627	4,407	16	27.68
Battle Mountain CDP . . . . .	3,635	2,871	17	26.61
Reno city . . . . .	225,221	180,480	18	24.79
Las Vegas city . . . . .	583,756	479,137	19	21.83
Sunrise Manor CDP . . . . .	189,372	156,120	20	21.30
Paradise CDP . . . . .	223,167	186,070	21	19.94
Moapa Valley CDP . . . . .	6,924	5,784	22	19.71
Spring Creek CDP . . . . .	12,361	10,548	23	17.19
Fallon city . . . . .	8,606	7,536	24	14.20
Silver Springs CDP . . . . .	5,296	4,708	25	12.49
Elko city . . . . .	18,297	16,708	26	9.51
Minden CDP . . . . .	3,001	2,836	27	5.82
Yerington city . . . . .	3,048	2,883	28	5.72
Carson City . . . . .	55,274	52,457	29	5.37
Ely city . . . . .	4,255	4,041	30	5.30
Winchester CDP . . . . .	27,978	26,958	31	3.78
Laughlin CDP . . . . .	7,323	7,076	32	3.49
Winnemucca city . . . . .	7,396	7,174	33	3.09
Gardnerville Ranchos CDP . . . . .	11,312	11,054	34	2.33
Boulder City city . . . . .	15,023	14,966	35	0.38
Sun Valley CDP . . . . .	19,299	19,461	36	-0.83
Hawthorne CDP . . . . .	3,269	3,311	37	-1.27
West Wendover city . . . . .	4,410	4,721	38	-6.59
Nellis AFB CDP . . . . .	3,187	8,896	39	-64.17
Incline Village CDP . . . . .	8,777	(X)	(X)	(X)
Lemmon Valley CDP . . . . .	5,040	(X)	(X)	(X)
Washoe Valley CDP . . . . .	3,019	(X)	(X)	(X)

Table 12.

**Population and Housing Units for Urban Areas: 2010**

[For information on confidentiality, nonsampling error, and definitions, see Appendixes]

State Urbanized Area Urban Cluster	State total		Total for urban areas crossing state lines	
	Population	Housing units	Population	Housing units
<b>Nevada</b> .....	<b>2,700,551</b>	<b>1,173,814</b>	<b>(X)</b>	<b>(X)</b>
<b>Urban</b> .....	<b>2,543,797</b>	<b>1,097,550</b>	<b>(X)</b>	<b>(X)</b>
In urbanized area .....	2,336,222	999,698	(X)	(X)
In urban cluster .....	207,575	97,852	(X)	(X)
<b>Rural</b> .....	<b>156,754</b>	<b>76,264</b>	<b>(X)</b>	<b>(X)</b>
<b>URBANIZED AREA</b>				
Carson City, NV .....	58,079	24,622	(X)	(X)
Las Vegas--Henderson, NV .....	1,886,011	806,755	(X)	(X)
Reno, NV--CA .....	392,132	168,321	392,141	168,328
<b>URBAN CLUSTER</b>				
Battle Mountain, NV .....	3,520	1,466	(X)	(X)
Boulder City, NV .....	13,866	6,981	(X)	(X)
Bullhead City, AZ--NV .....	180	146	48,656	27,288
Dayton, NV .....	11,127	4,569	(X)	(X)
Elko, NV .....	18,948	7,420	(X)	(X)
Ely, NV .....	4,681	2,331	(X)	(X)
Fallon, NV .....	16,241	7,098	(X)	(X)
Fernley, NV .....	18,979	7,829	(X)	(X)
Gardnerville Ranchos, NV .....	20,107	8,897	(X)	(X)
Hawthorne, NV .....	3,249	1,863	(X)	(X)
Incline Village, NV--CA .....	7,953	7,071	13,022	11,077
Johnson Lane, NV .....	5,337	2,164	(X)	(X)
Laughlin, NV .....	5,949	3,949	(X)	(X)
Mesquite, NV--AZ .....	13,871	7,810	14,284	8,051
Moapa Valley, NV .....	5,907	2,382	(X)	(X)
Pahrump, NV .....	28,446	13,834	(X)	(X)
South Lake Tahoe, CA--NV .....	1,998	1,281	29,107	20,291
Spring Creek North, NV .....	3,286	1,205	(X)	(X)
Spring Creek South, NV .....	3,862	1,295	(X)	(X)
Washoe Valley, NV .....	2,645	1,160	(X)	(X)
West Wendover, NV--UT .....	4,244	1,439	5,365	1,894
Winnemucca, NV .....	10,268	4,225	(X)	(X)
Yerington, NV .....	2,911	1,437	(X)	(X)

# Appendixes

---

Several appendixes traditionally found in printed reports are now available in a separate volume. For the following, see CPH-2-A, *Population and Housing Unit Counts, Selected Appendixes*, in print or on the Internet at <[www.census.gov/prod/cen2010/cph-2-a.pdf](http://www.census.gov/prod/cen2010/cph-2-a.pdf)> :

Appendix A. Geographic Terms and Concepts

Appendix B. Definitions of Subject Characteristics

Appendix C. Data Collection and Processing Procedures

Appendix D. Questionnaire

Appendix F. Operational Overview and Accuracy of the Data

Appendix G. Residence Rule and Residence Situations for the 2010 Census of the United States

Appendix H. Acknowledgments

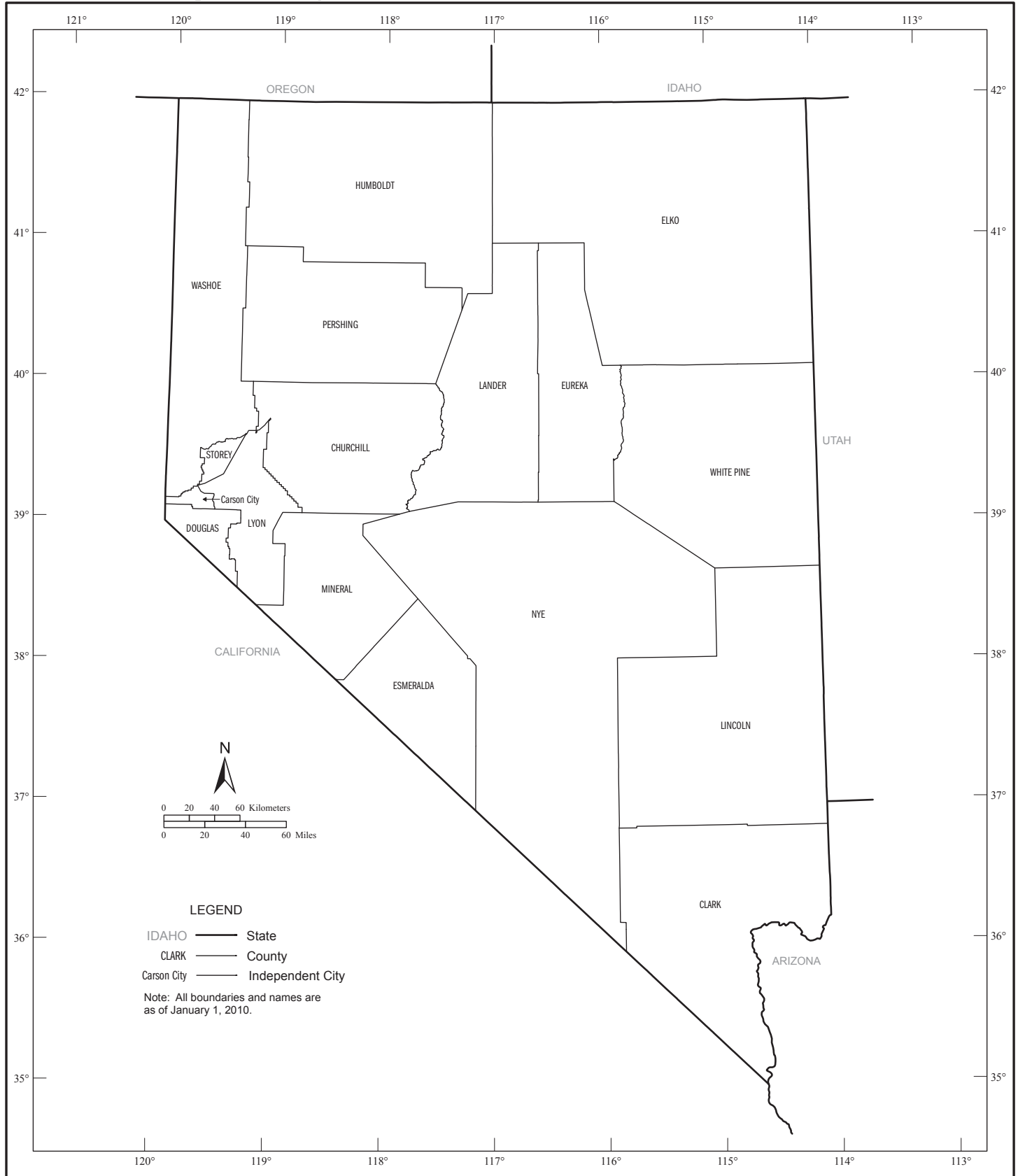
This Appendix section contains:

Appendix E. Maps



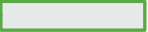









# Appendix E. Maps

## Counties and Independent City



# Geographic Areas Reference Map Legend, Section Locator, and Location Index

## Geographic Areas Reference Map Legend

	<b>CAMPO</b>	American Indian Reservation (Federal)		ROME	Incorporated Place <sup>1</sup>
	<b>ZIA</b>	Off-Reservation Trust Land		Zena	Census Designated Place
		State		<i>Lake Erie</i>	Large River, Lake, Water Body, or Shoreline
	<b>ERIE</b>	County or Independent City		A fishhook joins contiguous and/or discontinuous parts of the same geographic entity.	
	<b>YORK</b>	County Subdivision <sup>1</sup>		<b>SEE INSET A</b>	Inset

<sup>1</sup> A '\*' following a place name indicates that the place is an independent city and coextensive with a separate county subdivision. The county subdivision name is shown only if different than the name of the place.

Note: All legal and statistical area boundaries and names are as of January 1, 2010. Where international, state, county, independent city, and/or county subdivision boundaries coincide, the map shows the boundary symbol for the highest level of these geographic entities. The county and independent city boundaries are always shown. Where a county subdivision boundary symbol coincides with a place boundary, the map does not show the place boundary symbol. Where American Indian Reservation (Federal), American Indian Reservation (State), State Designated Tribal Statistical Area, and/or Tribal Designated Statistical Area boundaries coincide with a county subdivision boundary, the map does not show the county subdivision boundary symbol. Any geographic entity name may include '(pt)' if some portion of the entity extends beyond the limits of the map area displayed on the page, or if multiple discontinuous pieces of the entity have been discretely labeled on the page. A geographic entity name may include '(pts)' if many discontinuous pieces exist for that entity that cannot be discretely labeled. The boundaries shown on this map are for Census Bureau statistical data collection and tabulation purposes only; their depiction and designation for statistical purposes does not constitute a determination of jurisdictional authority or rights of ownership or entitlement.

## Section Locator





## Geographic Areas Reference Map Legend, Section Locator, and Location Index

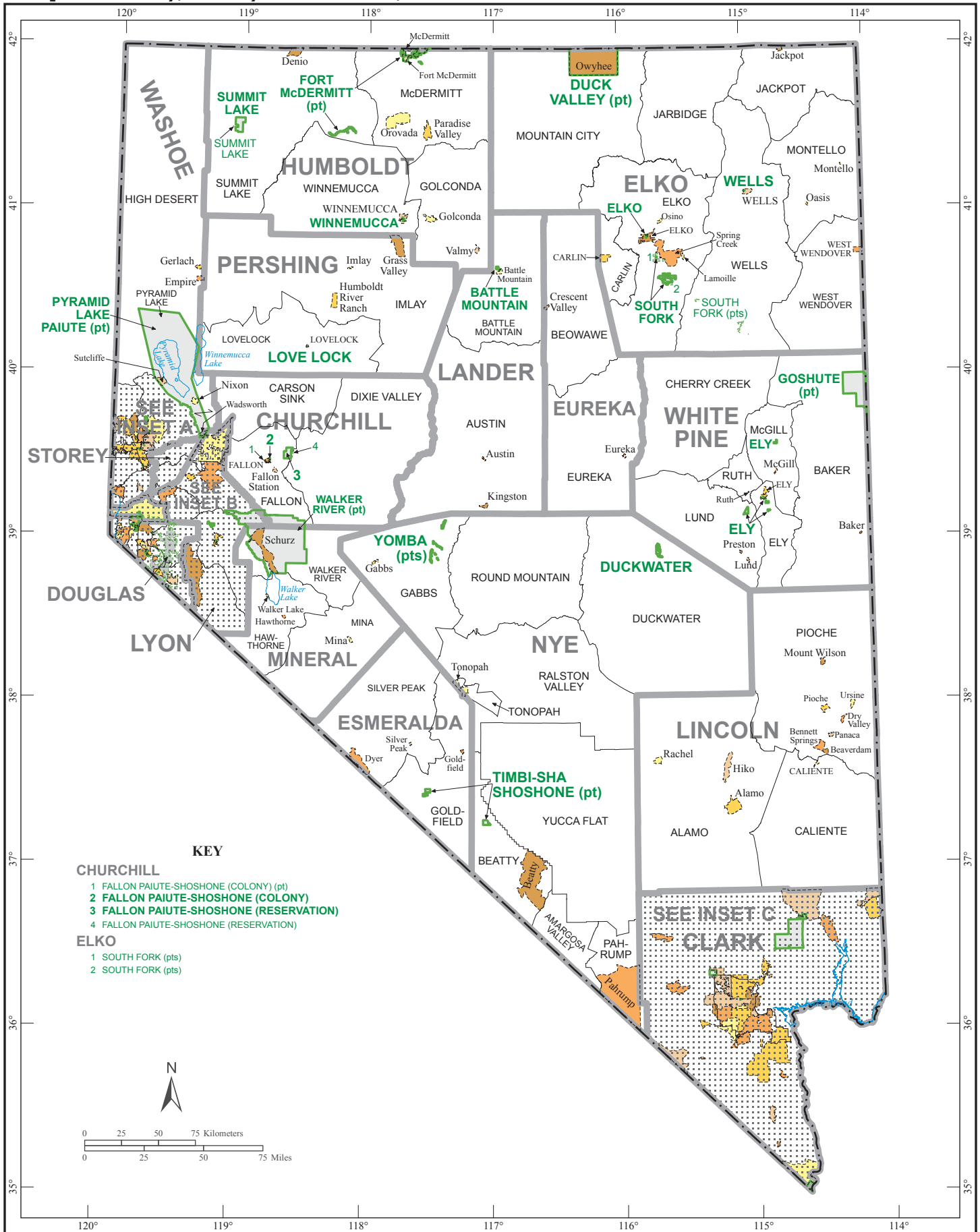
---

### County and Independent City Location Index

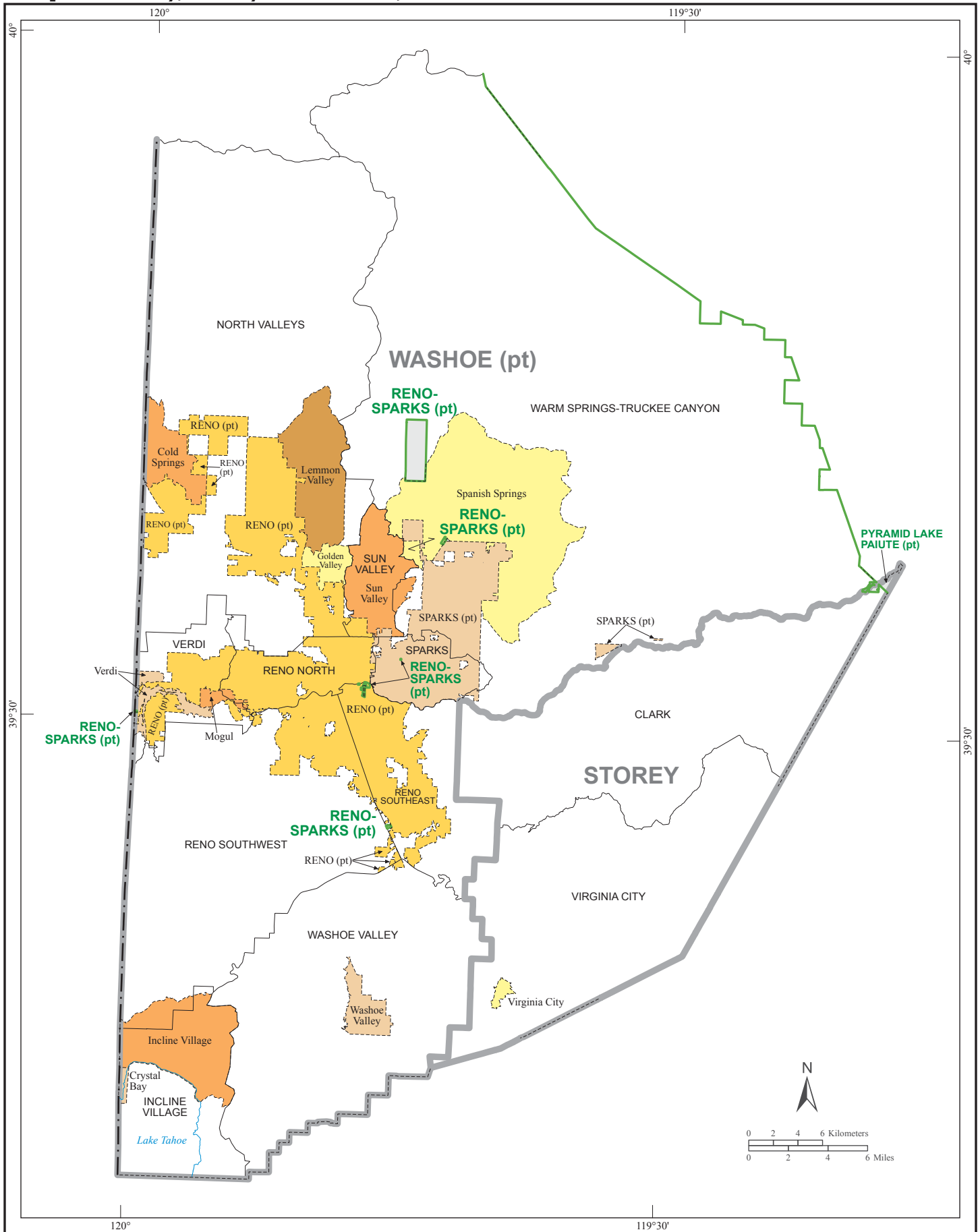
This list presents the map section numbers for each county and independent city in the state.  
Map section numbers refer to the geographic areas reference maps only.

COUNTY/ <i>INDEPENDENT CITY</i>	MAP SEC
<i>Carson City</i>	1
Churchill	1
Clark	1
Douglas	1
Elko	1
Esmeralda	1
Eureka	1
Humboldt	1
Lander	1
Lincoln	1
Lyon	1
Mineral	1
Nye	1
Pershing	1
Storey	1
Washoe	1
White Pine	1

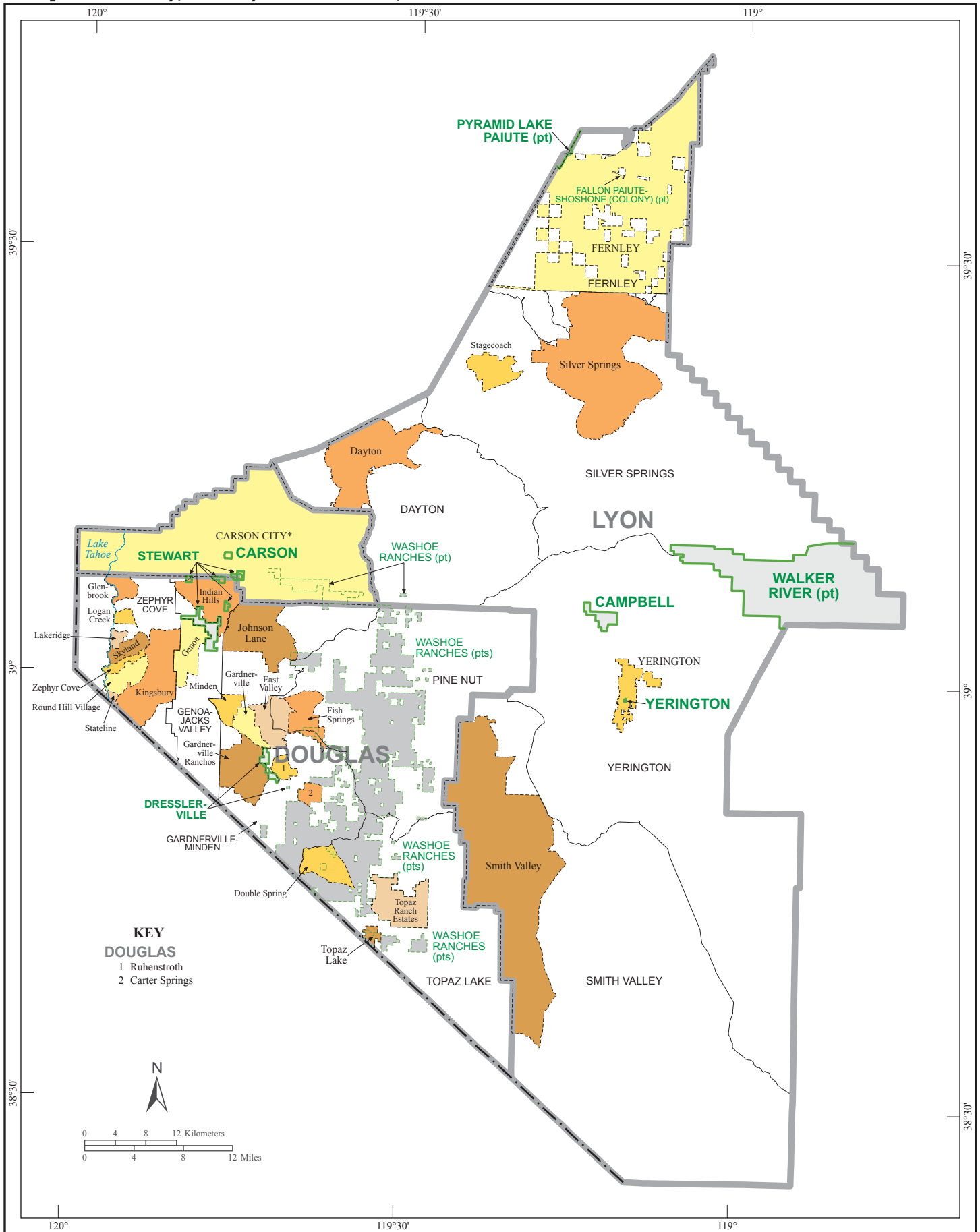
# American Indian Areas, Counties, Independent City, County Subdivisions, and Other Places - Section 1



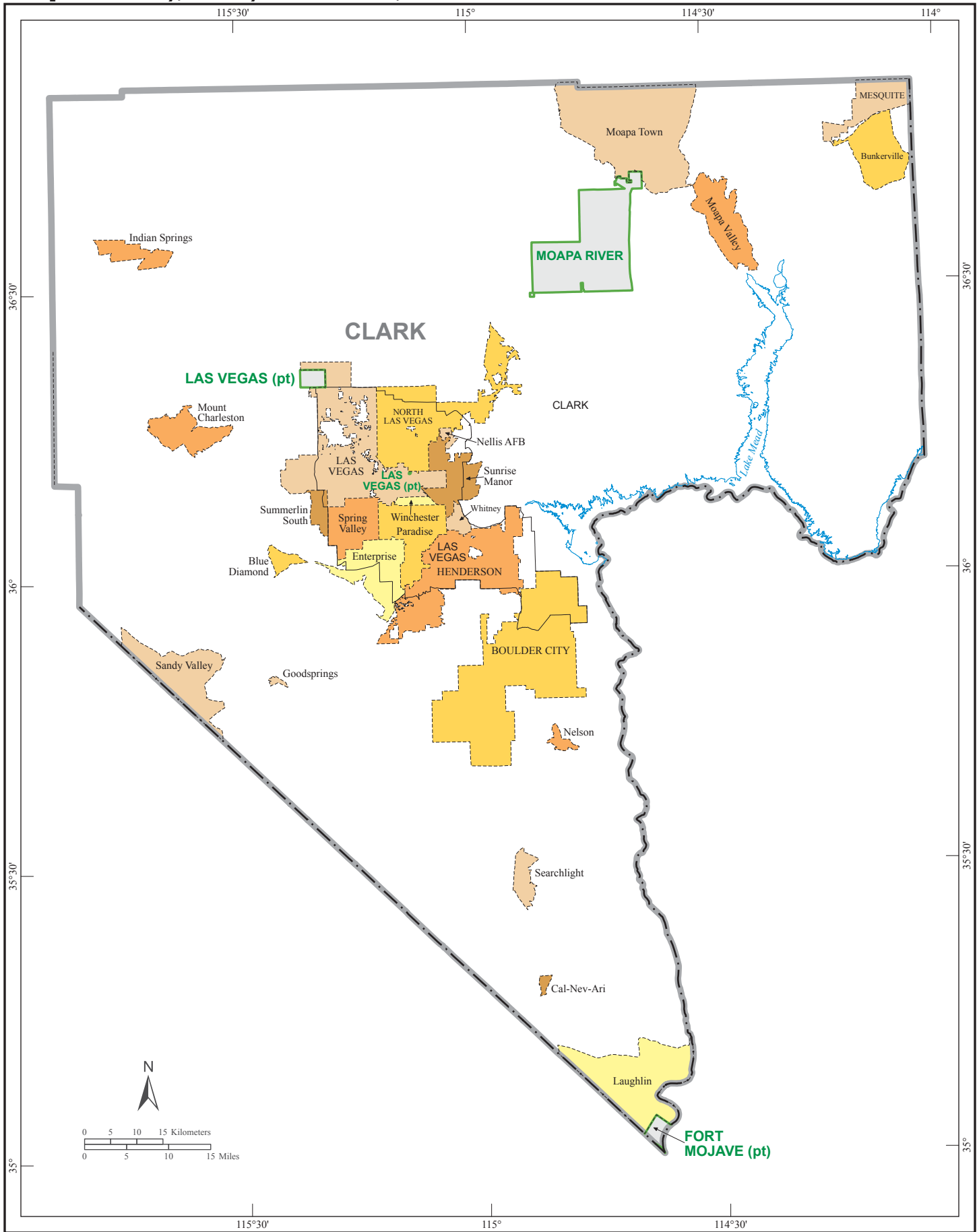
**American Indian Areas, Counties, Counties, Independent City, County Subdivisions, and Other Places - Inset A**



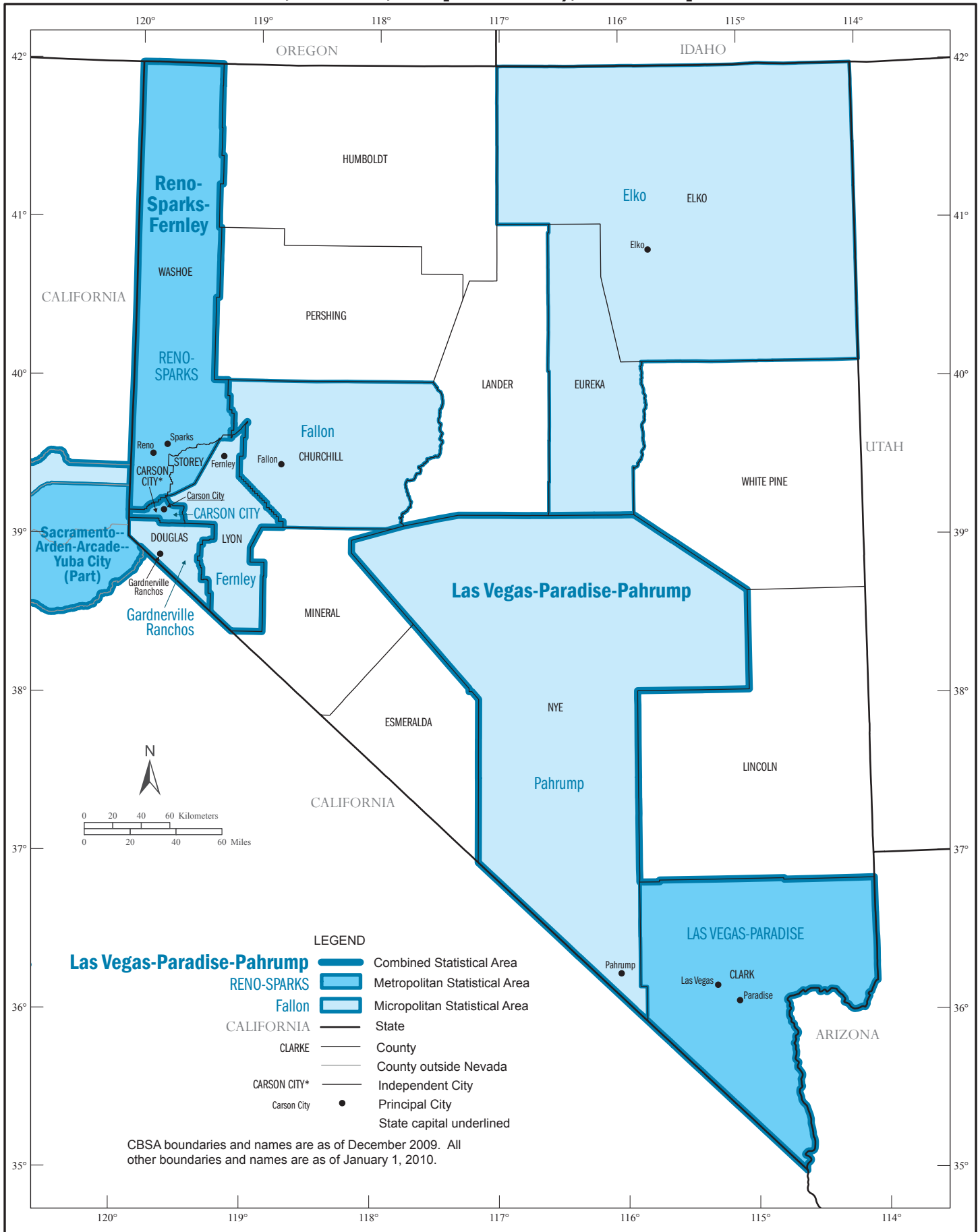
**American Indian Areas, Counties, Independent City, County Subdivisions, and Other Places - Inset B**



**American Indian Areas, Counties, Independent City, County Subdivisions, and Other Places - Inset C**



# Core Based Statistical Areas, Counties, Independent City, and Principal Cities



# Urban Areas

