

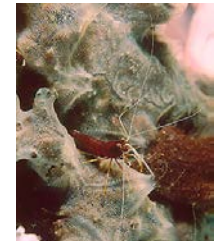
# **Adaptations for Living on a Reef**

# Adaptations for Living Spaces of the Reef :

ABOVE the reef:



ON the reef:

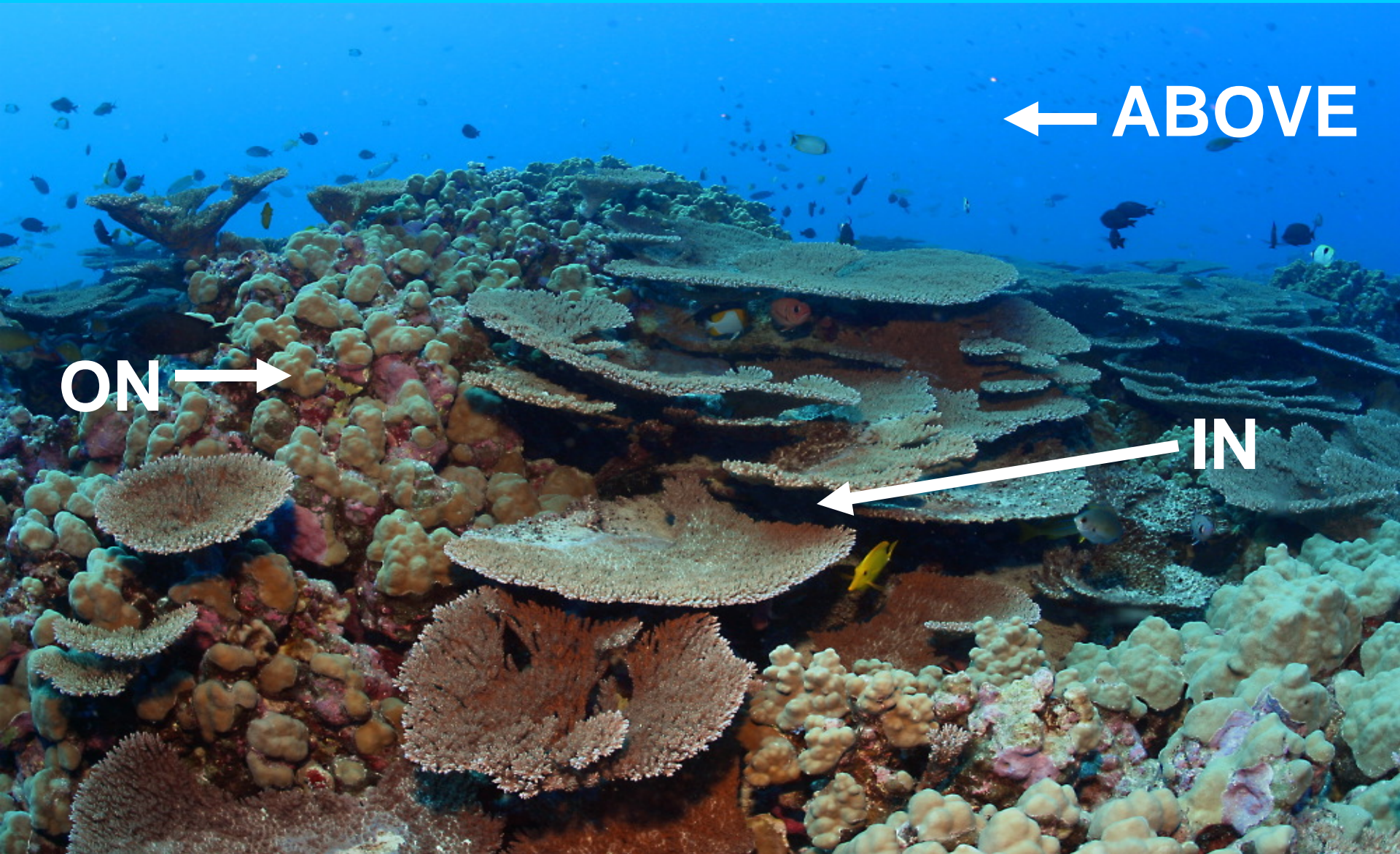


IN the reef:





**Coral reefs are called “Rainforests of the Sea”:**  
They provide many *living spaces* for plants & animals.



← ABOVE

ON →

← IN



Fish live **ABOVE** the reef



# Fish *swim fast* ABOVE the reef

## Fast Swimmers:

- Predators
- Streamlined Body Shape
- Forked tail fin



White-tip Reef Shark  
(manō-lālā-kea)



Trevally (ulua)



Barracuda (kākū)



# Fish *hover* ABOVE the reef



- Body shape is flat from side to side
- Fins flutter & are shaped to help fish hover above reef, or quickly move to safety.



Angelfish



Triggerfish (humuhumu)



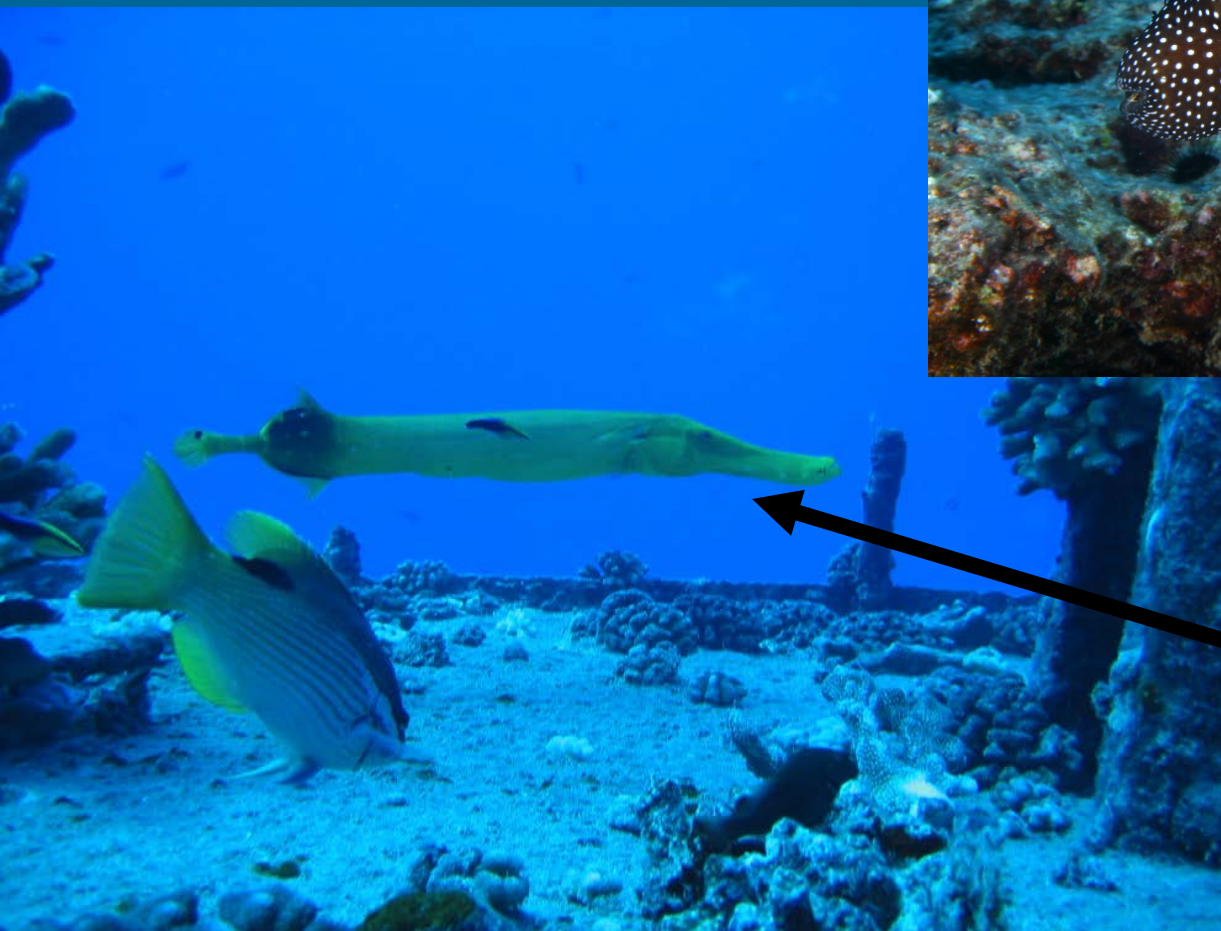
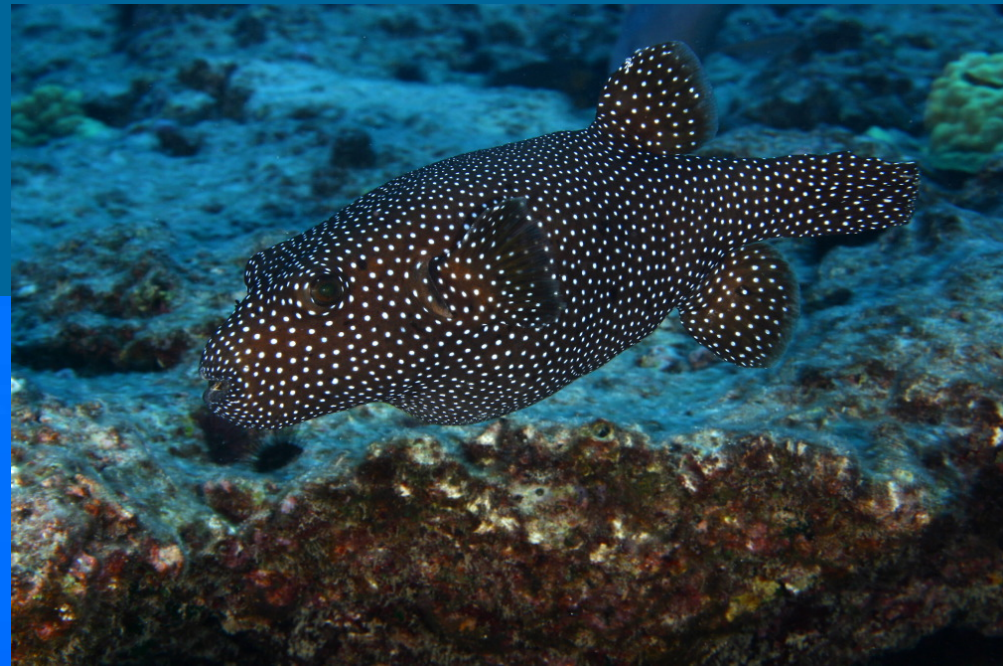
Yellow tang (lau-ī-pala)



# Some other fish that *hover* **ABOVE** the reef:

## Pufferfish ('o'pu-hue):

- Round body shape
- Fins for hovering



## Trumpetfish (nūnū):

- Long body shape
- Fins for hovering



# Fish live **ON** the reef

- Body shape = flat on the bottom
- Large pelvic fins to cling onto coral



**Goatfish  
(kūmū)**



HINT: Here is the fin.



**Hawkfish  
(po'o-pa'a)**



**Scorpionfish (nohu)**



# Fish live **IN** the reef



## **MORAY EEL (puhi)**

- Long snake-like body
- No pectoral or pelvic fins



Some organisms are **MOBILE**:  
They **MOVE ON** the Reef



Hawaiian Pom Pom Crab



HERMIT CRAB



CLEANER SHRIMP

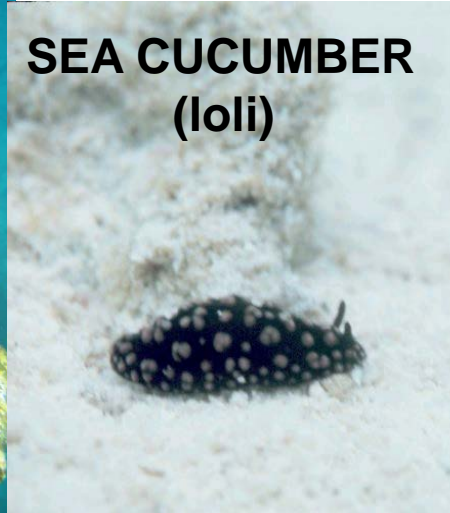
LOBSTER  
(ula)



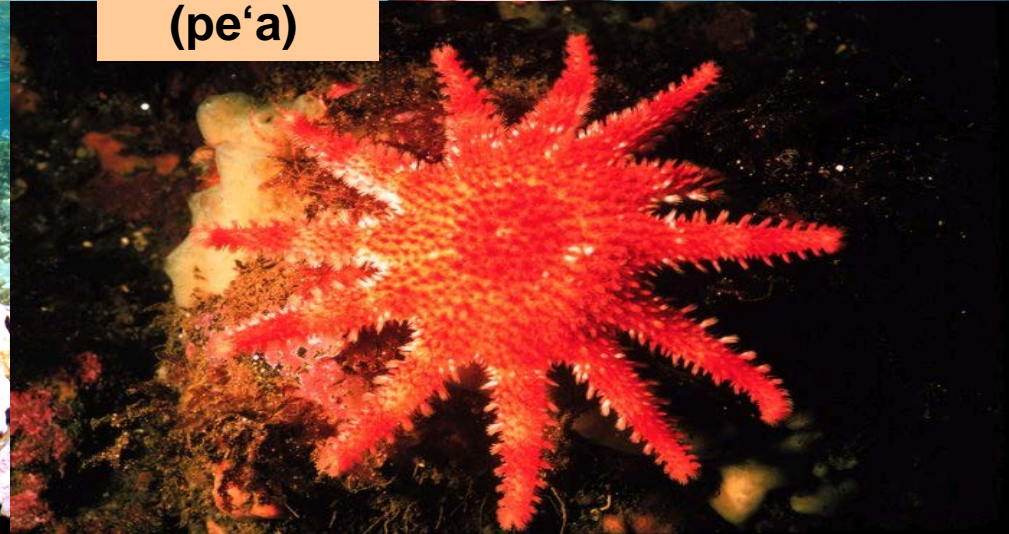
...using LEGS



Some other organisms are *MOBILE*, but:  
They *MOVE ON* the Reef ...using tube feet



**SEA STAR (pe'a)**





Another group of **MOBILE**  
organisms :  
which **MOVE ON** the Reef



LIMPET ('opihi)



COWRY (leho)



TRITON'S TRUMPET (pū'ole)

...use a big **FOOT MUSCLE**



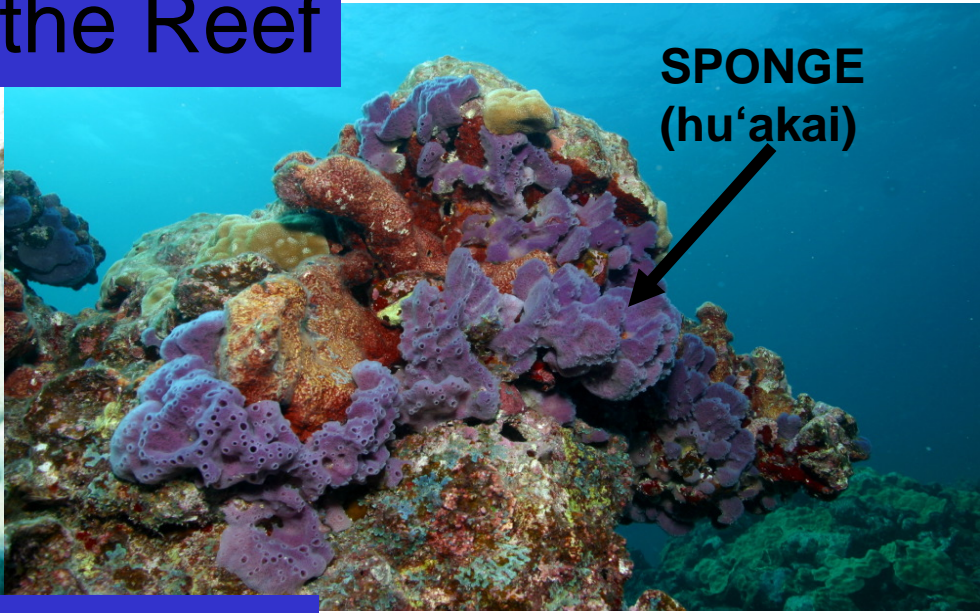
Some organisms are:

*STUCK DOWN*

**ON** the Reef



OYSTER (pā)

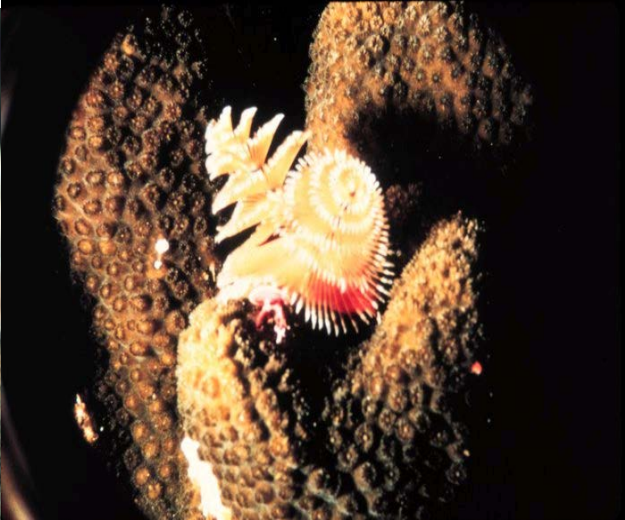


SPONGE (hu'akai)

**TUBE WORMS**



**IN** the Reef





**The End**