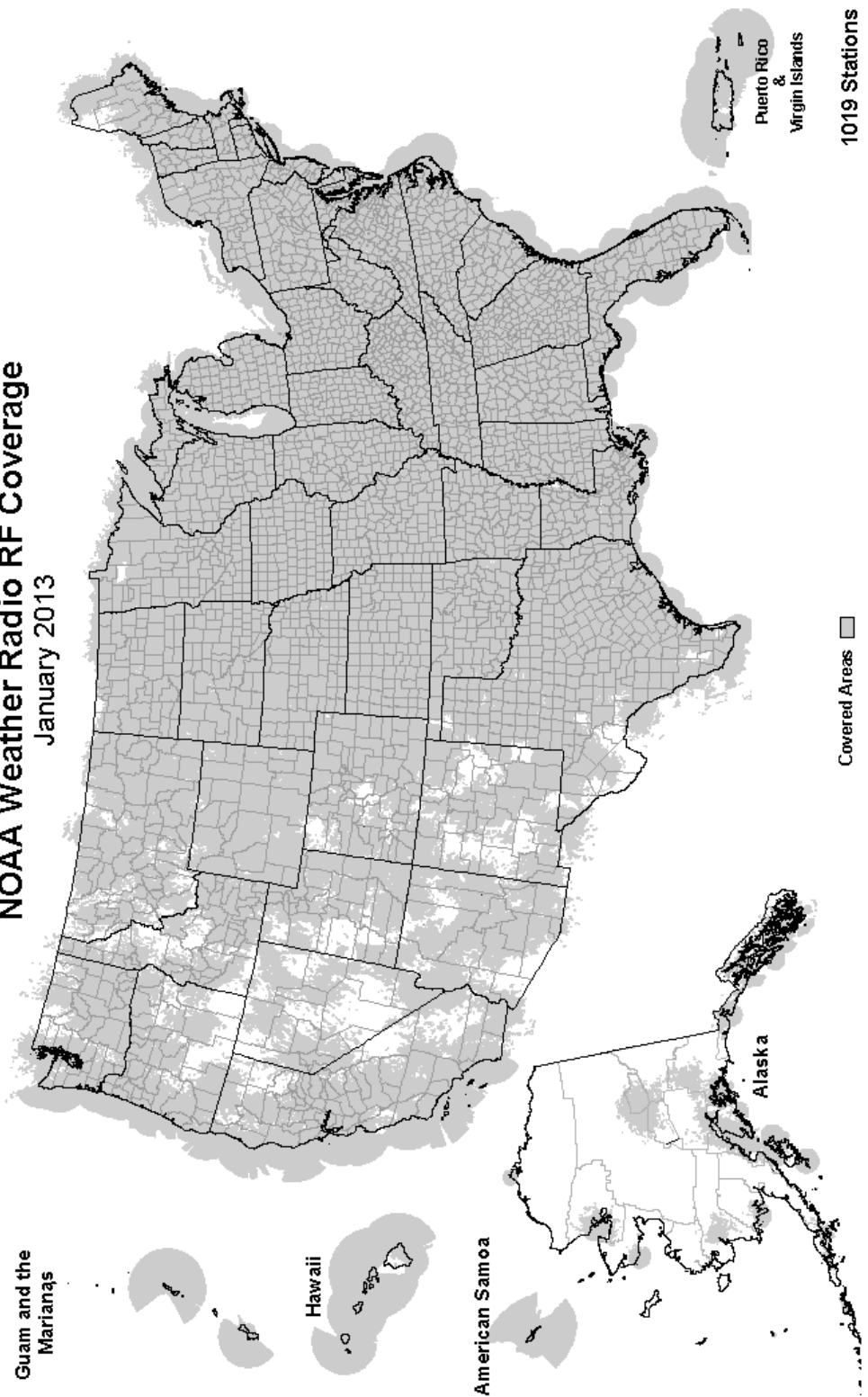


NOAA Weather Radio RF Coverage

January 2013



NOAA/PA 94062
Rev January 2013



The Voice of NOAA's National Weather Service

< Over 1000 Transmitters >

Broadcasting Continuous
Weather Information on the
Following Frequencies:

- 162.400 MHz
- 162.425 MHz
- 162.450 MHz
- 162.475 MHz
- 162.500 MHz
- 162.525 MHz
- 162.550 MHz

U.S. Department of Commerce
National Oceanic and Atmospheric Administration
National Weather Service

<http://www.weather.gov/nwr/>

NOAA WEATHER RADIO

The Voice of NOAA's National Weather Service

<http://www.weather.gov/nwr>

NOAA Weather Radio is a service of the National Oceanic and Atmospheric Administration (NOAA) of the U.S. Department of Commerce. As the "voice of the National Weather Service," it provides continuous broadcasts (24 hours a day) of the latest weather information from local National Weather Service offices. Weather messages are repeated every 4 to 6 minutes and are routinely updated every 1 to 6 hours or more frequently in rapidly changing local weather or if a nearby natural hazardous or manmade condition exists.



The regular broadcasts are specifically tailored to weather information needs of the people within the service area of the transmitter. For example, in addition to general weather information, stations in coastal areas provide information of interest to mariners. Other specialized information, such as hydrological forecasts and other climate data may be broadcast.

During severe weather, National Weather Service

forecasters can interrupt the routine weather broadcasts and insert special warning messages concerning imminent threats to life and property. The forecaster can also add special signals to warnings that trigger "alerting" features of specially equipped receivers. In the simplest case, this signal activates audible or visual alarms, indicating that an emergency condition exists within the broadcast areas of the station being monitored, and alerts the listener to turn up the volume and stay tuned for more information. More sophisticated receivers are automatically turned on and set to an audible volume when an alert is received.

In the most sophisticated alerting system, NOAA Weather Radio Specific Area Message Encoding (SAME), digital coding is employed to activate only those special receivers programmed for specific emergency conditions in specific area, typically a county. SAME can activate specially equipped radio and cable television receivers and provide a short text message that identifies the location and type of emergency. SAME is the primary activator for the FCC Emergency Alert System (EAS).

To program NWR SAME receivers with the proper county(s) and marine area(s) of choice, you need to know the 6-digit SAME code number(s) for that county(s). Once you have your code number(s), follow the manufacturer's directions for programming your NWR SAME receiver. You can obtain your SAME code numbers by dialing:

888-NWR-SAME (888-697-7263) – Voice & TTY/TTD Accessible

Under a January 1975 White House policy statement, NOAA Weather Radio was designated the sole Government-operated radio system to provide direct warning into private homes for both

Williamsport.....	162.400
PUERTO RICO	
Culebra.....	162.450
Maricao.....	162.550
San Juan.....	162.400
RHODE ISLAND	
Providence.....	162.400
SOUTH CAROLINA	
Aiken.....	162.450
Aynor.....	162.400
Barnwell.....	162.500
Beaufort.....	162.450
Charleston.....	162.550
Cheraw.....	162.450
Columbia.....	162.400
Cross.....	162.475
Florence.....	162.550
Georgetown.....	162.500
Greenville.....	162.550
Jasper County.....	162.400
Kirksey.....	162.425
Orangeburg.....	162.525
Rock Hill.....	162.425
Sumter.....	162.425
SOUTH DAKOTA	
Aberdeen.....	162.475
Arlington.....	162.525
Faith.....	162.475
Firesteel.....	162.425
Hot Springs.....	162.425
Lead.....	162.525
Lowry.....	162.500
Mitchell.....	162.450
Philip.....	162.450
Pickstown.....	162.425
Pierre.....	162.400
Porcupine.....	162.500
Rapid City.....	162.550
Reliance.....	162.525
Sioux Falls.....	162.400
South Shore.....	162.425
Wessington.....	162.550
White River.....	162.550
TENNESSEE	
Bristol.....	162.550
Centerville.....	162.450
Chattanooga.....	162.550
Clarksville.....	162.500
Clifton.....	162.500
Cookeville.....	162.400
Dyersburg.....	162.500
Hickman.....	162.500
Jackson.....	162.550
Knoxville.....	162.475
La Follette.....	162.450
Lafayette.....	162.525
Lawrenceburg.....	162.425
Lobelville.....	162.525
Memphis.....	162.475
Nashville.....	162.550
Shelbyville.....	162.475
Spencer.....	162.450
Vale.....	162.450
Waverly.....	162.400
Winchester.....	162.525

TEXAS	
Abilene.....	162.400
Alpine.....	162.550
Amarillo.....	162.550
Austin.....	162.400
Bay City.....	162.425
Beaumont.....	162.475
Big Spring.....	162.475
Borger.....	162.400
Brownsville.....	162.550
Bryan.....	162.550
Burkeville.....	162.425
Carrizo Springs.....	162.550
Center.....	162.525
Childress.....	162.525
Cisco.....	162.500
Coleman.....	162.475
Corpus Christi.....	162.550
Corsicana.....	162.525
Crowley/Fort Worth.....	162.550
Cumby.....	162.500
Dallas.....	162.400
Del Rio.....	162.400
D'Hanis.....	162.525
Dickens.....	162.500
Dilley.....	162.500
El Paso.....	162.475
El Paso Spanish.....	162.550
Galveston.....	162.550
Gilmer.....	162.425
Gonzales.....	162.525
Guadalupe Mt Nat'l. Park.....	162.525
Junction.....	162.475
Kerrville.....	162.450
La Grange.....	162.500
Laredo.....	162.550
Llano.....	162.425
Lubbock.....	162.400
Lufkin.....	162.550
Marietta.....	162.525
Miami.....	162.450
Midland/Odessa.....	162.400
Milano.....	162.525
Mineral Wells.....	162.525
Muenster.....	162.425
New Taiton.....	162.450
Onalaska.....	162.500
Ozona.....	162.500
Palestine.....	162.450
Paris.....	162.550
Pecos.....	162.450
Perryton.....	162.475
Pharr.....	162.400
Plainview.....	162.450
Port O'Connor.....	162.475
Richland Springs.....	162.525
Richmond.....	162.475
Rio Grande City.....	162.425
Riviera.....	162.525
San Angelo.....	162.550
San Antonio.....	162.550
Seguin.....	162.475
Seminole.....	162.425
Sherman.....	162.475
Stephenville.....	162.450
Summerfield.....	162.500
Sweetwater.....	162.425
Texarkana.....	162.550
Three Rivers.....	162.450
Throckmorton.....	162.425
Tomball.....	162.400
Tyler.....	162.475

Uvalde.....	162.425
Victoria.....	162.400
Waco.....	162.475
Wichita Falls.....	162.475
UTAH	
Bear Lake.....	162.500
Castle Dale.....	162.500
Coalville/ Park City.....	162.475
Escalante.....	162.425
Lake Powell.....	162.550
Logan.....	162.400
Manti.....	162.425
Milford/Cedar City.....	162.400
Moab.....	162.475
Monticello.....	162.450
Salt Lake City.....	162.550
St. George.....	162.475
Tabiona.....	162.550
Tooele (South Mountain).....	162.450
Tooele (Vernon Hills).....	162.525
Vernal.....	162.400
Wendover.....	162.475
VERMONT	
Burlington.....	162.400
Castleton.....	162.500
Marlboro.....	162.425
St. Johnsbury.....	162.425
Windsor.....	162.475
VIRGIN ISLANDS	
St. Croix.....	162.500
VIRGINIA	
Accomack.....	162.525
Covesville.....	162.450
Fredericksburg.....	162.425
Heathsville.....	162.400
Lynchburg.....	162.550
Manassas.....	162.550
Norfolk.....	162.550
Richmond.....	162.475
Roanoke.....	162.475
Sand Mtn.....	162.450
South Boston.....	162.525
WASHINGTON	
Astoria.....	162.400
Capitol Peak.....	162.475
Cle Elum.....	162.400
Davis Peak.....	162.525
Dayton.....	162.525
Forks.....	162.425
H Street - Blaine Area.....	162.525
Neah Bay.....	162.550
Okanogan.....	162.525
Plymouth.....	162.425
Puget Sound Marine.....	162.425
Randle.....	162.425
Richland.....	162.450
Seattle.....	162.550
Spokane.....	162.400
Wenatchee.....	162.475
Yakima.....	162.550

WEST VIRGINIA	
Backbone Mountain.....	162.450
Beckley.....	162.550
Charleston.....	162.400
Clarksburg.....	162.550
Garfield.....	162.500
Gilbert.....	162.475
Greggs Knob.....	162.500
Hinton.....	162.425
Monterville.....	162.525
Moorefield.....	162.400
Morgantown.....	162.475
Sutton.....	162.450

WISCONSIN	
Ashland.....	162.525
Baraboo.....	162.450
Black River Falls.....	162.500
Coloma.....	162.400
Crandon.....	162.450
Dubuque.....	162.400
Fond Du Lac.....	162.500
Green Bay.....	162.550
Gresham.....	162.500
Janesville.....	162.425
Ladysmith.....	162.550
Madison.....	162.550
Menomonie.....	162.400
Milwaukee.....	162.400
New London.....	162.525
Park Falls.....	162.500
Prairie Du Chien.....	162.500
Racine.....	162.450
Rhineland.....	162.400
Richland Center.....	162.475
Sheboygan.....	162.525
Sister Bay.....	162.425
Spooner.....	162.475
Tomah.....	162.525
Wausau.....	162.475
Wausaukee.....	162.400
Winona.....	162.425
Withee.....	162.425

WYOMING	
Afton.....	162.425
Casper.....	162.400
Cheyenne.....	162.550
Cody.....	162.400
Dubois.....	162.450
Elk Plaza.....	162.425

As of January, 2013 NOAA is operating 1019 stations across the United States and its territories.

The National Weather Service requests your assistance in reporting any outages of NOAA Weather Broadcast Stations.

Please use our Toll Free Number (888) 697-7263 or send an Email to nwroutage@noaa.gov to report the outage.

Clinton.....	162.500	North Platte.....	162.550
Columbia.....	162.400	Omaha.....	162.400
Dixon.....	162.500	Ord.....	162.525
Doniphan.....	162.450	Oshkosh.....	162.525
El Dorado Springs.....	162.475	Scottsbluff.....	162.475
Fredericktown.....	162.500	Shubert.....	162.500
Gainesville.....	162.425	Sidney.....	162.500
Hannibal.....	162.475	Superior.....	162.525
Hermitage.....	162.450	Trenton.....	162.500
Jamestown.....	162.425	Valentine.....	162.450
Joplin.....	162.425	Yankton.....	162.500
Kahoka.....	162.450		
Kansas City.....	162.550		

NEVADA

La Plata.....	162.525	Battle Mtn.....	162.425
Lancaster.....	162.550	Bullhead City.....	162.500
Maryville.....	162.425	Elko.....	162.550
Neosho.....	162.450	Ely.....	162.400
Piedmont.....	162.425	Eureka.....	162.550
Springfield.....	162.400	Fernley.....	162.450
St. Louis.....	162.550	Hawthorne.....	162.475
Summersville.....	162.475	Jackpot.....	162.500
Trenton.....	162.500	Las Vegas.....	162.550
Wardell.....	162.525	Owyhee.....	162.450
West Plains.....	162.525	Pahrump.....	162.400
		Reno.....	162.550
		Tonopah.....	162.400
		Winnemucca.....	162.400

NEW HAMPSHIRE

Baker.....	162.550	Clarksville.....	162.400
Belgian Hill.....	162.500	Concord.....	162.400
Billings.....	162.550	Deerfield.....	162.450
Bozeman.....	162.500	Hanover.....	162.525
Broadus.....	162.425	Holderness.....	162.550
Browning.....	162.525	Mt. Washington.....	162.500
Butte.....	162.550	Pack Monadnock.....	162.525
Circle.....	162.550		
Dillon.....	162.475		
Ekalaka.....	162.475		
Forsyth.....	162.525		
Glasgow.....	162.400		
Glendive.....	162.475		
Glentana.....	162.525		
Great Falls.....	162.550		
Hardin.....	162.450		
Havre.....	162.400		
Helena.....	162.400		
Jordan.....	162.500		
Kalispell.....	162.550		
Lewistown.....	162.500		
Livingston.....	162.525		
Malta.....	162.475		
Miles City.....	162.400		
Missoula.....	162.400		
Plentywood.....	162.475		
Poplar.....	162.425		
Ryegate.....	162.450		
Scobey.....	162.450		
Winnett.....	162.400		

NEW JERSEY

Atlantic City.....	162.400
Hardyston.....	162.500
Southard.....	162.450

NEW MEXICO

Albuquerque.....	162.400
Artesia.....	162.425
Carlsbad.....	162.475
Des Moines.....	162.550
Farmington.....	162.475
Hobbs.....	162.400
Las Cruces.....	162.400
Portales.....	162.475
Roswell.....	162.450
Ruidoso.....	162.550
Santa Fe.....	162.550
Silver City.....	162.425

NEW YORK

Albany.....	162.550
Binghamton.....	162.475
Buffalo.....	162.550
Beatrice.....	162.450
Cambridge.....	162.525
Chadron.....	162.525
Columbus.....	162.450
Grand Island.....	162.400
Holdrege.....	162.475
Lexington.....	162.425
Lincoln.....	162.475
Merna.....	162.500
Merriman.....	162.400
Mullen.....	162.425
Norfolk.....	162.550

Riverhead.....	162.475
Rochester.....	162.400
Spencerport.....	162.525
Stamford.....	162.400
Syracuse.....	162.550
Walton.....	162.425
Watertown.....	162.475
White Hill.....	162.525

NORTH CAROLINA

Asheville.....	162.400
Buck Mountain.....	162.500
Cape Hatteras.....	162.475
Chapel Hill.....	162.550
Charlotte.....	162.475
Ellerbe.....	162.400
Garner.....	162.450
Henderson.....	162.500
Linville.....	162.450
Mamie.....	162.425
Margarettsville.....	162.450
Moorestville.....	162.525
Mount Jefferson.....	162.500
New Bern.....	162.400
Robbinsville.....	162.525
Rocky Mount.....	162.475
Saint Pauls.....	162.475
Warsaw.....	162.425
Windsor.....	162.525
Winnabow.....	162.550
Winston-Salem.....	162.400

NORTH DAKOTA

Bismarck.....	162.475
Cavalier.....	162.450
Dickinson.....	162.400
Fargo.....	162.475
Fort Ransom.....	162.525
Grand Forks.....	162.475
Jamestown.....	162.550
Langdon.....	162.500
Minot.....	162.400
New Town.....	162.525
Petersburg.....	162.400
Rolla.....	162.475
Scranton.....	162.525
Sheyenne.....	162.525
Steele.....	162.400
Webster.....	162.425
Williston.....	162.550
Willow City.....	162.450

NORTHERN MARIANA ISLANDS

Saipan.....	162.550
-------------	---------

OHIO

Akron.....	162.400
Athens.....	162.425
Bridgeport.....	162.525
Carey.....	162.525
Chillicothe.....	162.500
Cleveland.....	162.550
Columbus.....	162.550
Dayton.....	162.475
Grafton.....	162.500
High Hill.....	162.475
Lima.....	162.400
Mansfield.....	162.450
Marietta.....	162.400
New Philadelphia.....	162.425
Otway.....	162.525
Sandusky.....	162.400

Toledo.....	162.500
Youngstown.....	162.500

OKLAHOMA

Altus.....	162.425
Antlers.....	162.400
Ardmore.....	162.525
Atoka.....	162.500
Bartlesville.....	162.425
Broken Bow.....	162.450
Chickasha.....	162.450
Clinton.....	162.525
Enid.....	162.475
Grove.....	162.525
Guymon.....	162.500
Lawton.....	162.550
McAlester.....	162.475
Oklahoma City.....	162.400
Oktaha.....	162.525
Ponca City.....	162.450
Stillwater.....	162.500
Tulsa.....	162.550
Wewoka.....	162.550
Woodward.....	162.500

OREGON

Bend/Redmond.....	162.500
Brookings.....	162.550
Burns Butte.....	162.475
Cape Blanco.....	162.425
Carney Butte.....	162.475
Coos Bay.....	162.400
Eugene.....	162.400
Florence.....	162.500
Fossil.....	162.550
Heppner.....	162.425
John Day.....	162.500
Klamath Falls.....	162.550
Medford.....	162.400
Mt Hebo.....	162.525
Mt. Ashland.....	162.475
Neahkahnie.....	162.425
Newport.....	162.550
Portland.....	162.550
Reedsport.....	162.525
Roseburg.....	162.550
Salem.....	162.475
Spout Springs.....	162.400
The Dalles.....	162.400
Tillamook.....	162.475

PENNSYLVANIA

Allentown.....	162.400
Altoona.....	162.425
Clearfield.....	162.550
Coudersport.....	162.500
Erie.....	162.400
Harrisburg.....	162.550
Hibernia Park.....	162.425
Honesdale.....	162.450
Huntingdon.....	162.525
Johnstown.....	162.400
Meadville.....	162.475
Parker.....	162.425
Philadelphia.....	162.475
Pittsburgh.....	162.550
Punxsutawney.....	162.500
State College.....	162.475
Towanda.....	162.525
Warren.....	162.450
Wellsboro.....	162.475
Wilkes-Barre.....	162.550

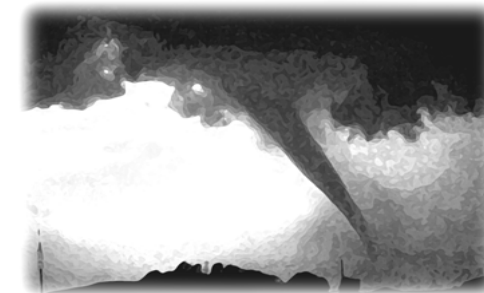
natural disasters and nuclear attack. This concept has been expanded to include warnings for all hazardous conditions that pose a threat to life and safety, both at a local and national level. As a result, NOAA Weather Radio is being better integrated with other National Weather Service systems to provide state and local emergency managers and other warning providers better access to local weather forecast offices, allowing hazard warnings of all types to be broadcast on NOAA Weather Radio within seconds

NOAA Weather Radio currently broadcasts from 1019 stations in fifty states, Puerto Rico, the U.S. Virgin Islands, American Samoa, Guam, and Saipan on seven frequencies in the VHF band, ranging from 162.400 to 162.550 megahertz (MHz). These frequencies are outside the normal AM or FM broadcast bands.

Special radios that receive only NOAA Weather Radio, both with and without special alerting features, are available from numerous manufacturers. In addition, other manufacturers are including NWR capability in a variety of receivers. NOAA Weather Radio capability is currently available on automobile, aircraft, marine, citizens band, and standard AM/FM radios as well as communications receivers, transceivers, scanners, and cable TV.

By nature and design, NOAA Weather Radio coverage is limited to an area within 40 miles of the transmitter. The quality of reception is dictated by transmitter distance, local terrain, and the quality and location of the receiver. In general, those using a high quality receiver on flat terrain or at sea can expect reliable reception beyond 40 miles. Those with standard receivers, surrounded by large buildings in cities and those in mountain valleys may experience little or no reception at considerably less than 40 miles. If possible, a receiver should be tested in the location where it will be used prior to purchase.

NOAA Weather Radio is directly available to a large portion of the U.S. population. The National Weather Service is currently engaged in a program to increase coverage to at least 95 percent of the population.



If you have a question regarding the technical aspects of NOAA Weather Radio such as transmitter location, reception, and characteristics or if you are interested in becoming a partner with the National Weather Service to identify or provide local funding and/or facilities for the installation of a NOAA Weather Radio transmitter, please contact your local National Weather Service Office or send a letter to:

National Weather Service
 Attn: Dissemination Systems Branch, W/OPS17
 1325 East-West Highway
 Silver Spring, MD 20910

The following is a listing of operational stations by state. For specific coverage information for your local area please visit our website at:

<http://www.weather.gov/nwr/>

ALABAMA

Anniston.....	162.475
Arab.....	162.525
Auburn.....	162.525
Birmingham.....	162.550
Brewton.....	162.475
Columbus.....	162.400
Cullman.....	162.450
Demopolis.....	162.475
Dozier.....	162.550
Florence.....	162.475
Greenville.....	162.425
Henagar.....	162.500
Huntsville.....	162.400
Jackson.....	162.500
Louisville.....	162.475
Mobile.....	162.550
Montgomery.....	162.400
Oneonta.....	162.425
Selma.....	162.450
Tuscaloosa.....	162.400
Winfield.....	162.525

ALASKA

Althorp Peak.....	162.425
Anchorage.....	162.550
Barrow.....	162.550
Bede Mountain.....	162.450
Bethel.....	162.550
Cape Fanshaw.....	162.425
Cape Gull.....	162.500
Cape Hinchinbrook.....	162.525
Cold Bay.....	162.425
Cordova.....	162.400
Craig.....	162.475
Dillingham.....	162.500
Duke Island.....	162.450
East Point.....	162.500
Fairbanks.....	162.550
Glennallen.....	162.550
Gravina Island.....	162.525
Haines.....	162.400
Homer.....	162.400
Juneau.....	162.550
Ketchikan.....	162.550
Kodiak.....	162.550
Kotzebue.....	162.550
Manleyville.....	162.500
Marmot Island.....	162.500
Mt. McArthur.....	162.525
Mt. Robert Barron.....	162.450
Nenana.....	162.400
Ninilchik.....	162.550
Nome.....	162.550
Pillar Mtn.....	162.525
Point Pigot.....	162.450
Potato Point.....	162.425
Rasperry Island.....	162.425
Rugged Island.....	162.425
Saint Paul Island.....	162.525
Sand Point.....	162.550
Seward.....	162.550
Sitka.....	162.550

Sitkinak Dome.....	162.450
Soldotna.....	162.475
Sukkwang Island.....	162.425
Tuklung Mtn.....	162.425
Unalaska.....	162.550
Valdez.....	162.550
Wasilla.....	162.400
Whittier.....	162.475
Wrangell.....	162.400
Yakutat.....	162.400
Zarembo Island.....	162.450

AMERICAN SAMOA

Mt. Ololete.....	162.550
Pago Pago.....	162.400

ARIZONA

Flagstaff.....	162.400
Globe Gila County S.....	162.500
Grand Canyon.....	162.475
Greer.....	162.525
Kingman.....	162.425
Lake Havasu.....	162.400
Nogales.....	162.500
Payson Gila County N.....	162.425
Phoenix.....	162.550
Prescott.....	162.525
Safford.....	162.550
Show Low.....	162.400
Tucson.....	162.400
Window Rock.....	162.550

ARKANSAS

Cherokee Village.....	162.475
El Dorado.....	162.525
Fayetteville.....	162.475
Fort Smith.....	162.550
Fountain Hill.....	162.475
Gurdon.....	162.475
Harrison.....	162.525
High Peak.....	162.425
Jonesboro.....	162.550
Little Rock.....	162.550
Marvell.....	162.525
Mena.....	162.400
Morrilton.....	162.475
Mountain View.....	162.450
Russell.....	162.400
Russellville.....	162.525
Springdale.....	162.400
Star City.....	162.400
Yellville.....	162.500

CALIFORNIA

Avalon.....	162.525
Bakersfield.....	162.550
Big Rock Ridge.....	162.500
Bishop.....	162.425
Coachella.....	162.400
Coachella / Spanish.....	162.525
Contra Costa County.....	162.425
Conway Summit.....	162.525
El Paso Mtns.....	162.425
Eureka.....	162.400
Fresno.....	162.400
Grass Valley.....	162.400
Los Angeles.....	162.550
Monterey.....	162.550
Monterey Marine.....	162.450
Point Arena.....	162.550
Redding.....	162.550
Sacramento.....	162.550

San Diego.....	162.400
San Diego Marine.....	162.425
San Francisco.....	162.400
San Luis Obispo.....	162.550
San Simeon.....	162.525
Sandberg.....	162.400
Santa Ana.....	162.450
Santa Barbara.....	162.400
Santa Barbara Marine.....	162.475
Sonoma County.....	162.475
Ukiah.....	162.525
Victorville.....	162.500
Yosemite.....	162.450
Yuma.....	162.550

COLORADO

Alamosa.....	162.475
Anton.....	162.450
Bethune.....	162.525
Boyero.....	162.450
Canon City.....	162.500
Colorado Springs.....	162.475
Deer Trail.....	162.500
Denver.....	162.550
Dillon.....	162.400
Durango.....	162.425
Eagle.....	162.450
Fort Collins/Ault.....	162.450
Fort Morgan.....	162.525
Fowler.....	162.425
Franktown.....	162.450
Glenwood Springs.....	162.500
Grand Junction.....	162.550
Greeley.....	162.400
La Junta.....	162.500
Lamar.....	162.525
Mead/Longmont.....	162.475
Montrose.....	162.450
Pueblo.....	162.400
Springfield.....	162.400
Steamboat Springs.....	162.525
Sterling.....	162.400
Walsenburg.....	162.450
Wray.....	162.475

CONNECTICUT

Cornwall.....	162.500
Hartford.....	162.475
Meriden.....	162.400
New London.....	162.550

DELAWARE

Lewes.....	162.550
Salisbury.....	162.475

DISTRICT OF COLUMBIA

Washington DC.....	162.450
--------------------	---------

FLORIDA

Belle Glade.....	162.400
Daytona Beach.....	162.400
East Point.....	162.500
Fort Myers.....	162.475
Fort Pierce.....	162.425
Gainesville.....	162.475
Hialeah Spanish.....	162.500
Inverness.....	162.400
Jacksonville.....	162.550
Key West.....	162.400
Lake City.....	162.400
Largo.....	162.450
Melbourne.....	162.550

Miami.....	162.550
Morrison.....	162.550
Naples.....	162.525
Ocala.....	162.525
Orlando.....	162.475
Palatka.....	162.425
Panama City.....	162.550
Pensacola.....	162.400
Princeton.....	162.425
Salem.....	162.425
Sebring.....	162.500
Sneads.....	162.425
Sumterville.....	162.500
Tallahassee.....	162.400
Tampa Bay.....	162.550
Tea Table Key.....	162.450
Venice.....	162.400
West Palm Beach.....	162.475
Westville.....	162.450

GEORGIA

Americus.....	162.425
Ashburn.....	162.450
Athens.....	162.400
Atlanta.....	162.550
Augusta.....	162.550
Baxley.....	162.525
Blakely.....	162.525
Blue Ridge.....	162.475
Brasstown Bald.....	162.500
Brunswick.....	162.425
Buchanan.....	162.425
Chatsworth.....	162.400
Clayton.....	162.450
Cleveland.....	162.525
Eastman.....	162.400
Eatonton.....	162.525
Jesup.....	162.450
La Grange.....	162.450
Macon.....	162.475
Metter.....	162.425
Pelham.....	162.550
Sandersville.....	162.450
Summerville.....	162.450
Thomaston.....	162.500
Toccoa.....	162.425
Valdosta.....	162.500
Washington.....	162.500
Waycross.....	162.475
Waynesboro.....	162.425

GUAM

Guam.....	162.400
-----------	---------

HAWAII

Hawaii Kai.....	162.400
Kauai.....	162.400
Kulani Cone.....	162.550
Maui.....	162.400
Oahu.....	162.550
South Point.....	162.550

IDAHO

Boise.....	162.550
Bonnors Ferry.....	162.500
Burley.....	162.475
Driggs.....	162.450
Grangeville.....	162.450
Lewiston.....	162.550
McCall.....	162.475
Orofino.....	162.500
Payette.....	162.400

Pocatello.....	162.550
Salmon.....	162.500
Sedgwick Peak.....	162.425
Sun Valley.....	162.450
Twin Falls.....	162.400

ILLINOIS

Bloomington.....	162.525
Champaign.....	162.550
Chester.....	162.450
Sioux City.....	162.475
St. Ansgar.....	162.450
Storm Lake.....	162.450
Van Wert.....	162.475
Waterloo.....	162.550
Dixon.....	162.525
Freeport.....	162.450
Galesburg.....	162.400
Hillsboro.....	162.425
Jacksonville.....	162.525
Jerseyville.....	162.450
Kankakee.....	162.525
Lockport.....	162.425
Macomb.....	162.500
Marion.....	162.425
McLeansboro.....	162.400
Newton.....	162.450
Odell.....	162.450
Paris.....	162.525
Peoria.....	162.475
Plano.....	162.400
Princeton.....	162.425
Quad Cities.....	162.550
Rockford.....	162.475
Salem.....	162.475
Shelbyville.....	162.500
Springfield.....	162.400

INDIANA

Angola.....	162.425
Bloomington.....	162.450
Edwardsville.....	162.425
Evansville.....	162.550
Fort Wayne.....	162.550
Georgia.....	162.500
Hebron.....	162.450
Indianapolis.....	162.550
Marion.....	162.450
Michigan City.....	162.500
Monticello/Lafayette.....	162.475
Muncie.....	162.425
New Albany.....	162.475
Newport.....	162.425
North Webster.....	162.500
Putnamville.....	162.400
Richmond.....	162.500
Seymour.....	162.525
South Bend.....	162.400

IOWA

Burlington.....	162.525
Carroll.....	162.425
Cedar Rapids.....	162.475
Decorah.....	162.525
Denison.....	162.550
Des Moines.....	162.550
Essex.....	162.550
Fairfield.....	162.400
Forest City.....	162.500
Fort Dodge.....	162.400
Hancock/Pottawattam.....	162.525
Iowa Falls.....	162.525
Lake Rathbun.....	162.425

Lenox.....	162.450
Manchester.....	162.450
Maquoketa.....	162.425
Marshalltown.....	162.500
Milford.....	162.550
Montezuma.....	162.450
Ottumwa.....	162.500
Ringsted.....	162.475
Sanborn.....	162.525
Sioux City.....	162.475
St. Ansgar.....	162.450
Storm Lake.....	162.450
Van Wert.....	162.475
Waterloo.....	162.550

KANSAS

Abilene.....	162.525
Beaumont.....	162.500
Belvidere.....	162.525
Blue Rapids.....	162.425
Chanute.....	162.400
Concordia.....	162.550
Dighton.....	162.525
Dodge City.....	162.475
Ellsworth.....	162.400
Gem.....	162.400
Great Bend.....	162.500
Halls Summit.....	162.425
Hays.....	162.450
Kirwin.....	162.500
Lenora.....	162.425
Meade.....	162.425
Parker.....	162.525
Saint Joseph.....	162.400
Sharon.....	162.400
Topeka.....	162.475
Tribune.....	162.550
Ulysses.....	162.450
Wichita.....	162.550

KENTUCKY

Ashland.....	162.550
Beattyville.....	162.500
Bowling Green.....	162.400
Burkesville.....	162.475
Campbellsville.....	162.525
Covington.....	162.550
East Madison County.....	162.525
Ekron.....	162.450
Elizabethtown.....	162.550
Frankfort.....	162.500
Frenchburg.....	162.475
Harlan.....	162.450
Hazard.....	162.475
Hopkinsville.....	162.450
Horse Cave.....	162.500
Irvine.....	162.475
Jackson.....	162.425
Lexington.....	162.400
London.....	162.475
Madison County.....	162.525
Madisonville.....	162.525
Manchester.....	162.400
Mayfield.....	162.475
Maysville.....	162.425
McKee.....	162.450
Moberly.....	162.525
Monticello.....	162.425
Morehead.....	162.425
Mount Vernon.....	162.425
Owenton.....	162.450
Paintsville.....	162.525

Phelps.....	162.500
Pikeville.....	162.400
Pineville.....	162.525
Somerset.....	162.550
Stanton.....	162.550
West Liberty.....	162.450
West Madison County.....	162.525
Whitesville.....	162.475
Williamsburg.....	162.500

LOUISIANA

Alexandria.....	162.475
Baton Rouge.....	162.400
Bogalusa.....	162.525
Colerain.....	162.475
Detroit Lakes.....	162.400
Lafayette.....	162.550
Lake Charles.....	162.400
Monroe.....	162.550
Morgan City.....	162.475
Natchitoches.....	162.500